



HAL
open science

Horseshoe bats from Southeast Asia host a high diversity of Sarbecoviruses, including close ancestors of SARS-CoV-2

Sarah Temmam, Khamsing Vongphayloth, Tran Cong Tu, Béatrice Regnault, Massimiliano Bonomi, Eduard Baquero, Cécile Hérate, Sandie Munier, Delphine Chrétien, Flora Donati, et al.

► To cite this version:

Sarah Temmam, Khamsing Vongphayloth, Tran Cong Tu, Béatrice Regnault, Massimiliano Bonomi, et al.. Horseshoe bats from Southeast Asia host a high diversity of Sarbecoviruses, including close ancestors of SARS-CoV-2. 8th World One Health Congress, Sep 2024, Cape Town / Le Cap, South Africa. pasteur-04727508

HAL Id: pasteur-04727508

<https://pasteur.hal.science/pasteur-04727508v1>

Submitted on 9 Oct 2024

HAL is a multi-disciplinary open access archive for the deposit and dissemination of scientific research documents, whether they are published or not. The documents may come from teaching and research institutions in France or abroad, or from public or private research centers.

L'archive ouverte pluridisciplinaire **HAL**, est destinée au dépôt et à la diffusion de documents scientifiques de niveau recherche, publiés ou non, émanant des établissements d'enseignement et de recherche français ou étrangers, des laboratoires publics ou privés.

Copyright

Horseshoe bats from Southeast Asia host a high diversity of Sarbecoviruses, including close ancestors of SARS-CoV-2.

Sarah Temmam¹, Khamsing Vongphayloth², Tran Cong Tu³, Béatrice Regnault¹, Massimiliano Bonomi⁴, Eduard Baquero⁵, Cécile Hérat⁶, Sandie Munier⁷, Flora Donati⁸, Delphine Chrétien¹, Thomas Bigot⁹, Léa Vendramini¹, Philippe Pérot¹, Yasaman Karami⁴, Océane Dehan⁸, Faustine Amara⁷, Bounsavane Douangboubpha¹⁰, Daosavanh Sanamxay¹⁰, Vilakhan Xayaphet¹⁰, Phetphoumin Paphaphanh¹⁰, Somphavanh Somlor², Khaithong Lakeomany², Nothasin Phommavanh², Mikael Attia⁷, Laurine Conquet¹¹, Grégory Jouvion¹², Juliana Pipoli Da Fonseca¹³, Thomas Cokelaer¹³, Tran Nhu Duong³, Tran Vu Phong³, Nguyen Thi Yen³, Hoang Ngoc Anh³, Tran Hai Son³, Pham Tuan Anh³, Vu Dinh Thong¹⁴, Francis Relouzat⁶, Thibaut Naninck⁶, Julien Lemaître⁶, Nathalie Derreudre-Bosquet⁶, Quentin Pascal⁶, Michael Nilges⁴, Vincent Lacoste², Xavier Montagutelli¹¹, Vu Sinh Nam³, Roger Le Grand⁶, Félix A. Rey⁵, Sylvie van der Werf⁷, Paul T. Brey², Marc Eloit¹.

contact: sarah.temmam@pasteur.fr / marc.eloit@pasteur.fr

- Institut Pasteur, Université de Paris, Pathogen Discovery Laboratory, Paris, France.
- Institut Pasteur du Laos, Vientiane, Lao People's Democratic Republic.
- National Institute of Hygiene and Epidemiology, Hanoi 100000, Vietnam.
- Institut Pasteur, Université de Paris, CNRS UMR 3528, Structural Bioinformatics Unit, Paris, France.
- Institut Pasteur, Université de Paris, CNRS UMR 3569, Structural Virology Unit, Paris, France.
- Center for Immunology of Viral, Auto-immune, Hematological and Bacterial Diseases (IMVA-HB/IDMIT), Université Paris-Saclay, Inserm, CEA, Fontenay-aux-Roses, France.
- Institut Pasteur, Université de Paris, CNRS UMR 3569, Molecular Genetics of RNA Viruses Unit, Paris, France.
- Institut Pasteur, Université Paris Cité, National Reference Center for Respiratory Viruses, Paris, France.
- Bioinformatic and Biostatistic Hub - Computational Biology Department, Institut Pasteur, Université Paris Cité, Paris, France.
- Faculty of Environmental Sciences, National University of Laos, Vientiane, Lao People's Democratic Republic.
- Institut Pasteur, Université Paris Cité, Mouse Genetics Laboratory, Paris, France.
- Ecole Nationale Vétérinaire d'Alfort, Unité d'Histologie et d'Anatomie Pathologique, Maisons-Alfort, France.
- Biomics Platform, C2RT, Institut Pasteur, Université Paris Cité, Paris, France.
- Institute of Ecology and Biological Resources, Vietnam Academy of Science and Technology (VAST), Hanoi 70072, Vietnam.

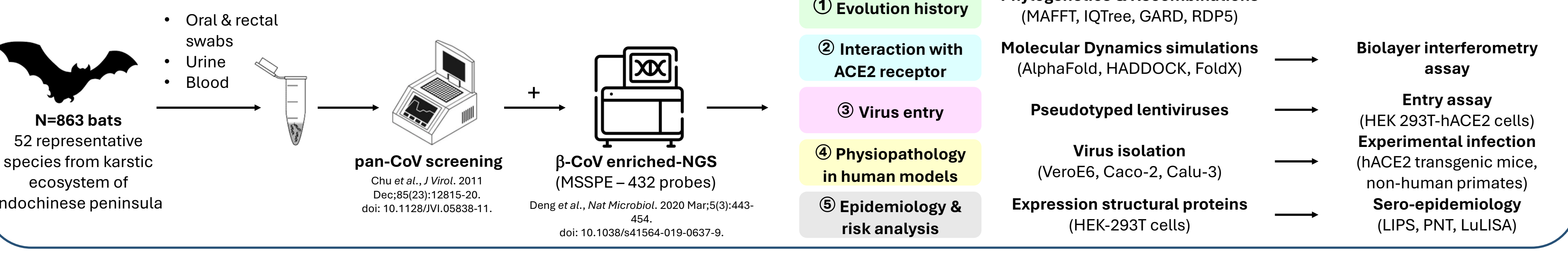
Background

- Bats are **reservoirs** of many alpha- & beta-CoVs
- > **4000 CoVs** identified in **14 bat species** Ruiz-Aravena et al., 2022 Nat. Rev. Microbiol. DOI: 10.1038/s41579-021-00652-2
- SE Asia: huge richness of horseshoe bat species
- Many **outbreaks** due to CoVs, *Sarbecovirus* at the origin of the last human pandemic Keusch et al., 2022 PNAS. DOI: 10.1073/pnas.2202871119; Zhou et al., 2021 Cell. DOI: 10.1016/j.cell.2021.06.008; Sanchez et al., 2022 Nat. Comm. DOI: 10.1038/s41467-022-31860-w

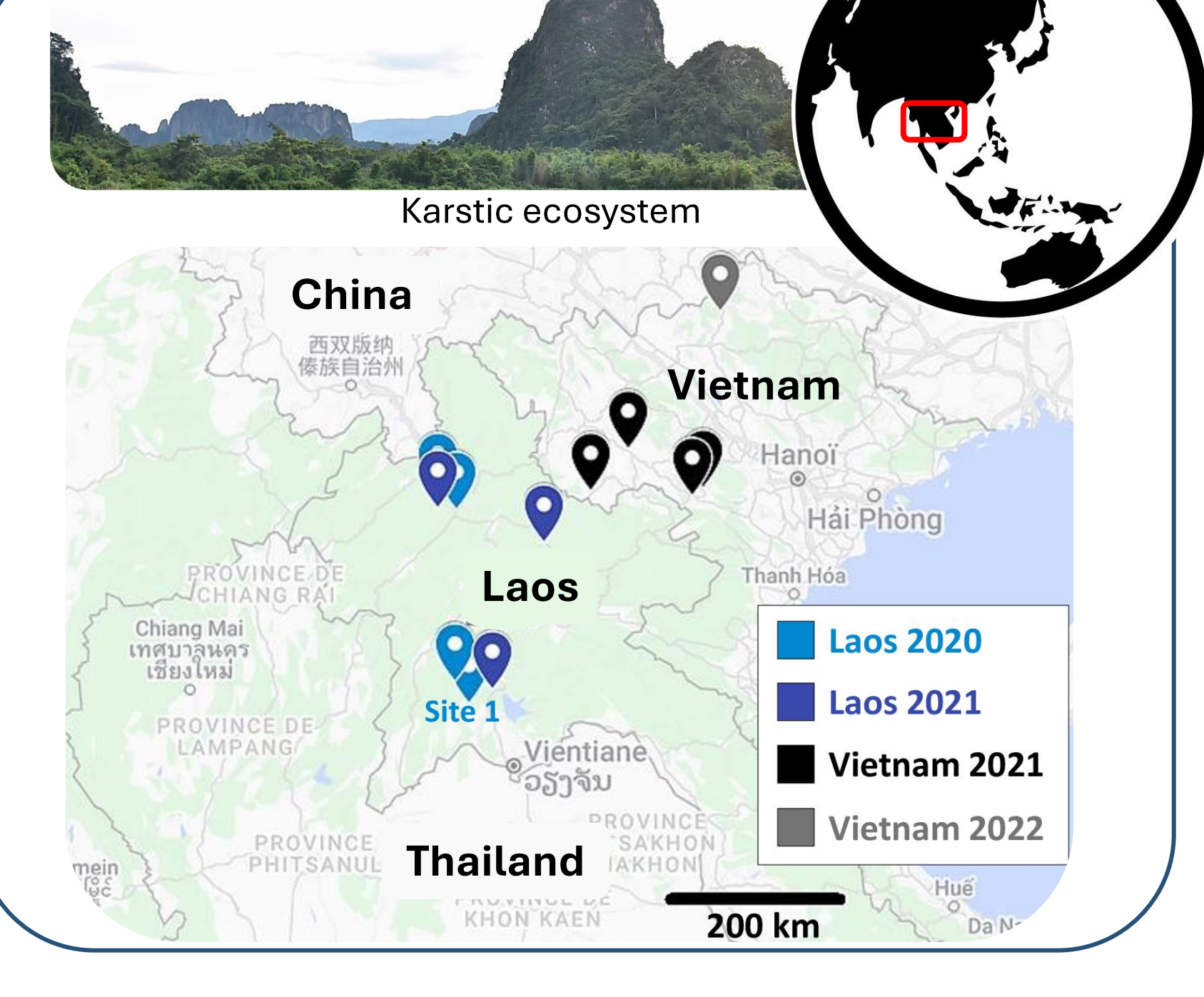
Objectives

- Understanding of the origins, natural history & dissemination of *Sarbecovirus*
 - Identify **natural reservoirs** of *Sarbecovirus*
 - Decipher **interspecies transmission** (bat-to-bat, bat-to-mammals, bat-to-humans)
- Study the **pathogenicity** of bat *Sarbecovirus* in human-relevant models
- Detect past CoV infections in humans
 - Identify **early circulation** of *Sarbecovirus* before global spread

Methods

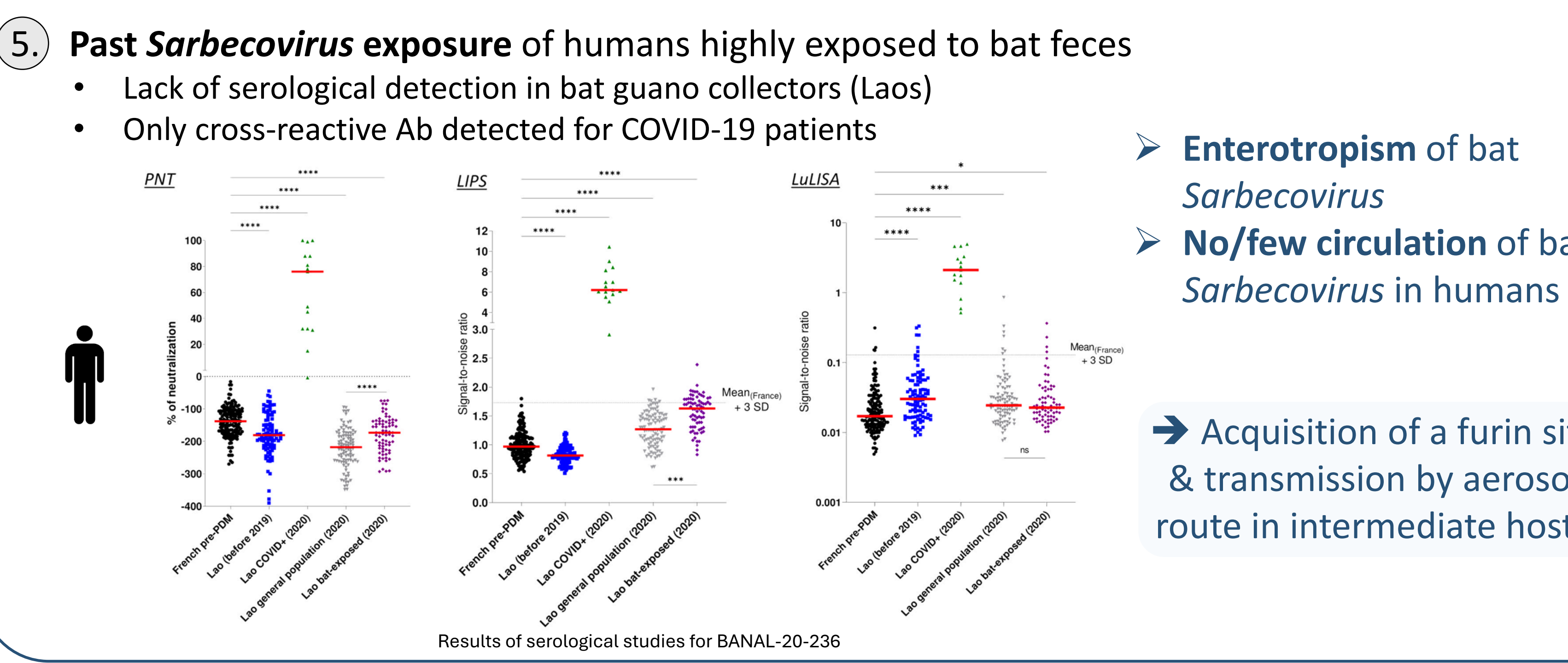
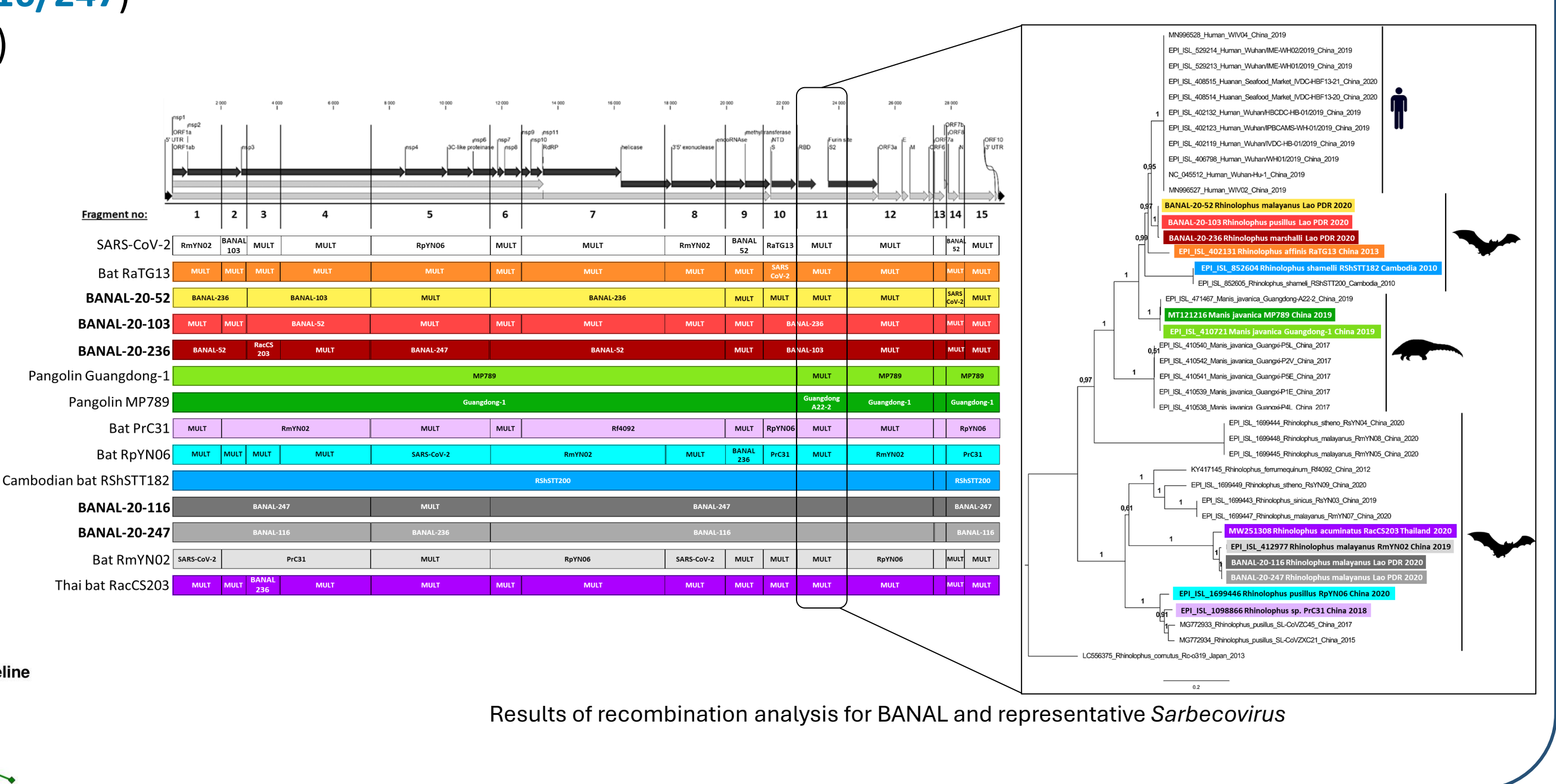
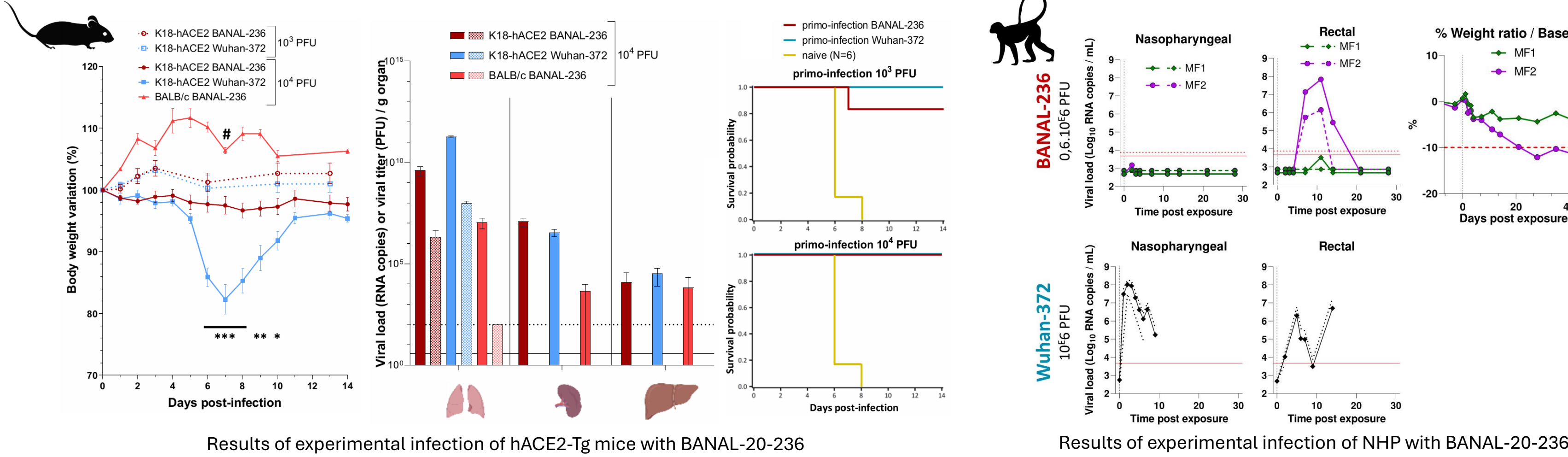
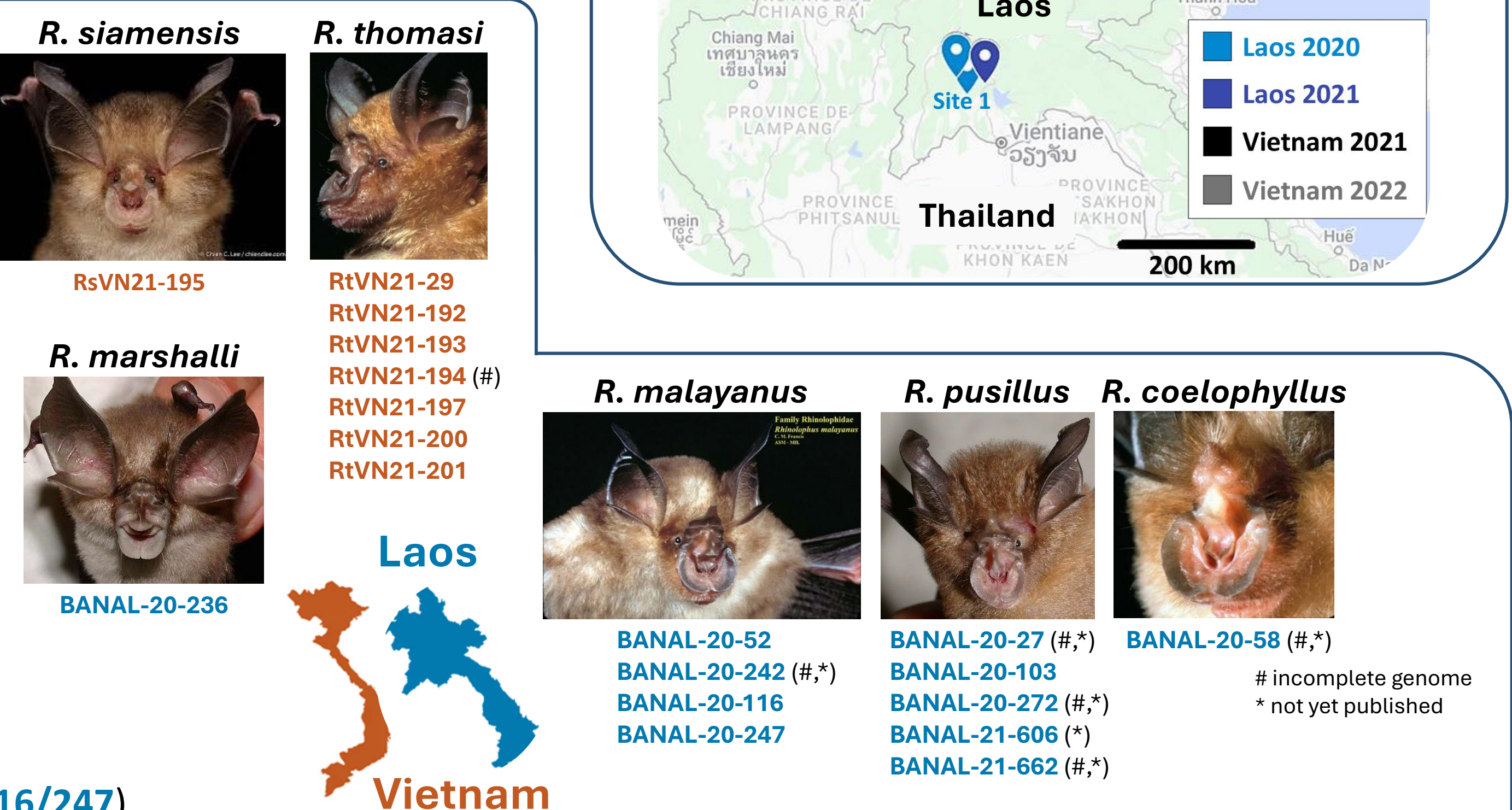


Study sites



Results

- Identification of **19 novel Sarbecovirus** in 6 *Rhinolophus* sp. bat species:
 - R. siamensis* & *R. thomasi* in Vietnam
 - R. marshalli*, *R. malayanus*, *R. pusillus* & *R. coelophyllus* in Laos
 - Rhinolophus* sp. are the **natural reservoirs** of *Sarbecovirus*
 - No *Sarbecovirus* identified in other bat species
 - No furin site in Spike protein of bat *Sarbecovirus*
- Recombination and cross-species transmission are major drivers of virus evolution:
 - Concomitant circulation of ≠ lineages in same cave → risk of recombination
 - Same *Sarbecovirus* strain identified in ≠ bat species → **cross-species transmission** between bats that live in **sympatry**
- Host range of bat *Sarbecovirus* partly driven by ability to interact with ACE2 receptor:
 - Genomic signature of Receptor-Binding Domain in Spike protein
 - Deletion** in RBD = **inability** to interact with ACE2 (**RsVN21-195, RtVN21-29 to -201 + BANAL-20-116/247**)
 - Conservation** of contact residues = **ability** to interact with ACE2 (**BANAL-20-52/103/236, -21-606**)
 - Interaction with hACE2 receptor
 - No interaction & no entry in human cells (**RsVN21-195, RtVN21-29 to -201 + BANAL-20-116/247**) → involvement of another receptor?
 - High affinity & ACE2-dependant entry in human cells (**BANAL-20-52/103/236, -21-606**) → **risk of spillover?**
- Pathogenicity of bat *Sarbecovirus* in human-relevant models (e.g. BANAL-20-236):
 - Tg mice**: no significant body weight loss & virus load in lungs << SARS-CoV-2 (Wuhan strain) **cross-protection** against SARS-CoV-2 ⁶¹⁴ challenge
 - NHP**: no clinical signs & transient virus load in the **enteric route** compared to SARS-CoV-2



Conclusion & perspectives

- Ecological factors** contributing to a possible emergence of *Sarbecovirus*:
 - Bat species richness → horseshoe bats are natural reservoirs
 - Bat lifestyle → colonies with mixed species more prone to exchange viruses through feco-oral route
 - Co-circulation of different virus strains in same ecosystem → risk of recombination
 - Human exposure → ↑ risk of contact with bat feces for guano collectors, religious communities, tourists visiting caves
- Emergence of SARS-CoV-2**: questions to be solved
 - Origin of furin cleavage site → likely acquired through recombination
 - Origin of donor sequence (virus genome, host transcript, etc.)?
 - Host for recombination (bat, intermediate host, etc.)?
 - Route of transmission to human populations
 - Furin acquisition = unique event to explain shift from enteric to respiratory tropism?
- Proof-of-concept** to study the emergence of CoVs in Indochinese peninsula
- Perspectives**: New collections from Vietnam, at the border with China

References

Temmam S. et al., Bat coronaviruses related to SARS-CoV-2 and infectious for human cells. *Nature*. 2022 Apr;604(7905):330-336. doi: 10.1038/s41586-022-04532-4
 Temmam S. et al., SARS-CoV-2-related bat virus behavior in human-relevant models sheds light on the origin of COVID-19. *EMBO Rep.* 2023 Apr 5;24(4):e56055. doi: 10.15252/embr.202256055
 Temmam S. et al., Genotype and Phenotype Characterization of *Rhinolophus* sp. Sarbecovirus from Vietnam: Implications for Coronavirus Emergence. *Viruses*. 2023 Sep 8;15(9):1897. doi: 10.3390/v15091897