



**HAL**  
open science

## Exploring the multidimensional nature of repetitive and restricted behaviors and interests (RRBI) in autism: neuroanatomical correlates and clinical implications

Aline Lefebvre, Nicolas Traut, Amandine Pedoux, Anna Maruani, Anita Beggiato, Monique Elmaleh, David Germanaud, Anouck Amestoy, Myriam Ly-Le Moal, Christopher Chatham, et al.

### ► To cite this version:

Aline Lefebvre, Nicolas Traut, Amandine Pedoux, Anna Maruani, Anita Beggiato, et al.. Exploring the multidimensional nature of repetitive and restricted behaviors and interests (RRBI) in autism: neuroanatomical correlates and clinical implications. *Molecular Autism*, 2023, 14 (1), pp.45. 10.1186/s13229-023-00576-z . pasteur-04624884

**HAL Id: pasteur-04624884**

**<https://pasteur.hal.science/pasteur-04624884v1>**

Submitted on 25 Jun 2024

**HAL** is a multi-disciplinary open access archive for the deposit and dissemination of scientific research documents, whether they are published or not. The documents may come from teaching and research institutions in France or abroad, or from public or private research centers.

L'archive ouverte pluridisciplinaire **HAL**, est destinée au dépôt et à la diffusion de documents scientifiques de niveau recherche, publiés ou non, émanant des établissements d'enseignement et de recherche français ou étrangers, des laboratoires publics ou privés.



Distributed under a Creative Commons Attribution 4.0 International License

RESEARCH

Open Access



# Exploring the multidimensional nature of repetitive and restricted behaviors and interests (RRBI) in autism: neuroanatomical correlates and clinical implications

Aline Lefebvre<sup>1,2,6,14,18\*</sup>, Nicolas Traut<sup>3</sup>, Amandine Pedoux<sup>4</sup>, Anna Maruani<sup>2,4</sup>, Anita Beggiato<sup>2,4</sup>, Monique Elmaleh<sup>5</sup>, David Germanaud<sup>6,7,8</sup>, Anouck Amestoy<sup>9,10</sup>, Myriam Ly-Le Moal<sup>11</sup>, Christopher Chatham<sup>12</sup>, Lorraine Murtagh<sup>12</sup>, Manuel Bouvard<sup>9,10</sup>, Marianne Alisson<sup>5</sup>, Marion Leboyer<sup>10,13</sup>, Thomas Bourgeron<sup>2,15</sup>, Roberto Toro<sup>3</sup>, Guillaume Dumas<sup>16</sup>, Clara Moreau<sup>2,17</sup> and Richard Delorme<sup>1,2,10,15</sup>

## Abstract

**Background** Repetitive and restricted behaviors and interests (RRBI) are core symptoms of autism with a complex entity and are commonly categorized into ‘motor-driven’ and ‘cognitively driven’. RRBI symptomatology depends on the individual’s clinical environment limiting the understanding of RRBI physiology, particularly their associated neuroanatomical structures. The complex RRBI heterogeneity needs to explore the whole RRBI spectrum by integrating the clinical context [autistic individuals, their relatives and typical developing (TD) individuals]. We hypothesized that different RRBI dimensions would emerge by exploring the whole spectrum of RRBI and that these dimensions are associated with neuroanatomical signatures—involving cortical and subcortical areas.

**Method** A sample of 792 individuals composed of 267 autistic subjects, their 370 first-degree relatives and 155 TD individuals was enrolled in the study. We assessed the whole patterns of RRBI in each individual by using the Repetitive Behavior Scale-Revised and the Yale-Brown Obsessive Compulsive Scale. We estimated brain volumes using MRI scanner for a subsample of the subjects ( $n = 152$ , 42 ASD, 89 relatives and 13 TD). We first investigated the dimensionality of RRBI by performing a principal component analysis on all items of these scales and included all the sampling population. We then explored the relationship between RRBI-derived factors with brain volumes using linear regression models.

**Results** We identified 3 main factors (with 30.3% of the RRBI cumulative variance): Factor 1 (FA1, 12.7%) reflected mainly the ‘motor-driven’ RRBI symptoms; Factor 2 and 3 (respectively, 8.8% and 7.9%) gathered mainly Y-BOCS related items and represented the ‘cognitively driven’ RRBI symptoms. These three factors were significantly associated with the right/left putamen volumes but with opposite effects: FA1 was negatively associated with an increased volume of the right/left putamen conversely to FA2 and FA3 (all uncorrected  $p < 0.05$ ). FA1 was negatively associated with the left amygdala (uncorrected  $p < 0.05$ ), and FA2 was positively associated with the left parietal structure (uncorrected  $p = 0.001$ ).

\*Correspondence:

Aline Lefebvre

aline.lefebvre@universite-paris-saclay.fr

Full list of author information is available at the end of the article



© The Author(s) 2023. **Open Access** This article is licensed under a Creative Commons Attribution 4.0 International License, which permits use, sharing, adaptation, distribution and reproduction in any medium or format, as long as you give appropriate credit to the original author(s) and the source, provide a link to the Creative Commons licence, and indicate if changes were made. The images or other third party material in this article are included in the article’s Creative Commons licence, unless indicated otherwise in a credit line to the material. If material is not included in the article’s Creative Commons licence and your intended use is not permitted by statutory regulation or exceeds the permitted use, you will need to obtain permission directly from the copyright holder. To view a copy of this licence, visit <http://creativecommons.org/licenses/by/4.0/>. The Creative Commons Public Domain Dedication waiver (<http://creativecommons.org/publicdomain/zero/1.0/>) applies to the data made available in this article, unless otherwise stated in a credit line to the data.

**Conclusion** Our results suggested 3 coherent RRBI dimensions involving the putamen commonly and other structures according to the RRBI dimension. The exploration of the putamen's integrative role in RSBI needs to be strengthened in further studies.

**Keywords** RRB, Phenotype, Cortico-striatal-thalamo-cortical loop

## Introduction

Autism Spectrum Disorders (ASD) are complex conditions characterized by atypical social communication, as well as restricted or stereotyped behaviors and interests (RRBI) (DSM-5, APA), affecting 1–2% of individuals from the general population [69]. One source of this complexity relies on the heterogeneity of symptoms depicted by autistic individuals, specifically when considering the RRBI. These symptoms could be dichotomized in 'motor-driven' symptoms gathering the stereotyped movements (e.g. head banging) and the repetitive behaviors, and in 'cognitively driven' symptoms, including obsessive–compulsive like symptoms and cognitive inflexibility [39, 56]. The determinants of this differential expression remain largely unknown, although the individual's cognitive skills seem to be a major modulator of RRBI. Autistic individuals with a comorbid intellectual deficiency predominantly display motor-related symptoms, cognitively driven symptoms, if they exist, are probably underestimated due to a reporting bias. In contrast, autistic individuals without such deficiency express more those which are cognitively driven [15]. Other modulators affect the expressiveness of these symptoms, such as the individual's age [18] or the associated social communication skills themselves. Studies exploring the familial aggregation of RRBI in autism report that the repetitive/stereotyped behaviors are mainly observed in probands and the obsessive-like symptoms in their non-affected relatives, independently of their cognitive abilities [29, 67]. The apparent dichotomy of the RRBI is also reinforced by the use of distinct screening tools, opposing those dedicated to the exploration of RRBI in the context of autism, such as the Repetitive Behaviors Scale-Revised (RBS-R, [35]) and those measuring them in individuals with obsessive–compulsive disorders with the Y-BOCS as a gold standard [23]. However, contrary to an approach divided into repetitive behaviors for some individuals and obsessive symptoms for others, some authors have developed new tools to consider the wide diversity of RRBI better and offer a unifying approach to these symptoms. Although preliminary and performed in the general population, one study showed a high intra-familial correlation of RRBI, whether the index case has associated autistic symptoms [18]. These findings encourage researchers to reconsider the nosology of RRBI and to adopt a more dimensional approach than a categorical to these symptoms.

It also seems consistent with what the literature reports about the involvement of a similar pattern of brain structures in RRBI. Animal models suggest a critical role of the cortico-basal-ganglia-thalamo-cortical loop in the emergence and maintenance of RRBI [12]. Induced deletion of Shank3 (*SHANK3* being a major gene associated with autism) in inhibitory neurons of the striatum results in repetitive/stereotyped-like behaviors, and conversely, deletion of Shank3 in excitatory neurons of the prefrontal cortex results in excessive self-grooming behaviors considered as an equivalent of obsessive–compulsive symptoms [4]. In humans, studies exploring RRBI in autistic individuals also report abnormalities in subcortical structures, specifically the striatum. For example, using T1-weighted anatomical images from the Autism Brain Imaging Data Exchange, Schuetze et al. [58] reported that stereotyped behaviors were positively associated with increased bilateral globus pallidus surface area. Paralleling these findings, the ENIGMA-OCD working group observed larger thalamic volume affecting the lateral, pulvinar, and ventral regions in children with OCD [66]. However, another mega-analysis by the OCD Brain Imaging Consortium (OBIC) pointed more toward the ventrolateral and dorsomedial prefrontal in obsessive–compulsive behaviors in humans [20]. Moreover, multiple strands of evidence indicate deviations in brain growth and maturation trajectories rather than static alterations in autism and OCD [25, 41, 49].

Altogether the literature presents a certain coherence between the results of clinical, genetic and brain imaging studies suggesting a commonality of the RRBI with a differential expression according to the individual phenotypic characteristics. To better understand the heterogeneity and familial patterns of RRBI in autism, as well as the structural brain abnormalities that underlie them, we performed this study exploring RRBI in a sample of 792 individuals gathering autistic patients ( $n=267$ ), their non-affected first-degree relatives ( $n=370$ ) and typically developing individuals from the general population (TD) ( $n=155$ ). To embrace the diversity of the whole pattern of RRBI, we explored each enrolled individual with the Repetitive Behavior Scale-Revised (RBS-R) [35] and the Yale-Brown Obsessive Compulsive Scale (Y-BOCS) [23], both considered as gold standard questionnaires to explore repetitive/stereotyped behaviors and obsessive–compulsive symptoms in clinical populations. We then

ran a factor analysis on all RRBI to apprehend further the distribution of these symptoms independently of the subject’s status (affected, non-affected relatives, or typically developing participants). We finally performed a multiple linear regression model on a subsample of 152 subjects to explore the relationship between these RRBI-related factors, and the cortical/subcortical brain volumes based on MRI. We hypothesized that two main factors would emerge from the factor analysis, mirroring the dichotomized model of RRBI (repetitive/stereotyped vs obsessive/compulsive symptoms), but displaying common and specific associations with brain structures of the cortico-striatal-thalamo-cortical loop.

**Methods**

**Ethics**

The study was granted approval by the local Ethics Committee (ref: 2008-A00019-46) and registered in a public trial registry (NCT02628808). The study was carried out in accordance with Good Clinical Practice (ICH GCP) standards. Written informed consent was obtained from all participants. For patients who were unable to consent for themselves, a parent or legal guardian consented to the study on their behalf.

**Participants**

A sample of 792 individuals composed of 267 autistic subjects; their 370 first-degree relatives and 155 individuals from the general population with typical development (TD) were enrolled in the study at the Child

and Adolescent Psychiatry Department, Robert Debre Hospital, Paris (France). Their demographic and clinical characteristics are reported in Table 1. Participants’ clinical assessment procedures followed previously described methods [39]. ASD diagnosis was based on DSM-IV-TR/5 criteria and made by summing the information from the Autism Diagnosis Interview-Revised (ADI-R), the Autism Diagnostic Observation Scale—second edition (ADOS-2), and clinical reports from experts in the field, who made the final diagnostic decision. The non-verbal cognitive abilities were assessed using the Wechsler Intelligence Scales adapted to age or the Raven’s Progressive Matrices (RPM) for those with poor (or lack) verbal abilities [52]. Those with low, mild, or below intellectual disabilities were excluded (IQ < 70).

Concerning first-degree relatives and TD, the presence of autistic symptoms was assessed by using the Social Responsiveness Scale-II (SRS-II) [14]. We also explored their Axis I psychiatric conditions (in accordance with DSM-IV-TR/5 criteria) using semi-standardized direct interviews, the Schedule for Affective Disorders and Schizophrenia for School-Age Children, Present and Lifetime version (K-SADS-PL) [33] for subjects below 18-year-old or the Diagnostic Interview for Genetic Studies (DIGS) [50] for adults. The non-verbal cognitive abilities of first-degree relatives and TD were estimated with Raven’s Progressive Matrices (RPM) [52]. Those with low, mild or below intellectual disabilities were excluded (IQ < 70).

**Table 1** Clinical and demographic characteristics of the individuals enrolled in the study

	ASD (N= 267)	Relatives (N= 370)	Controls (N= 155)	R <sup>2</sup>	F	p value
Age	17.7 (12.9)	38.0 (17.2)	38.0 (14.9)	0.3	139.4	< 0.001
Sex—male ratio (% , n)	86%, 230	57%, 174	55%, 86	113.4*	–	< 0.001
OCD (% , n)	11.61%, 31	3.24%, 12	0.65%, 1	0.09	–	< 0.001
AD (% , n)	14.23%, 38	10%, 37	1.94%, 3	0.06	–	< 0.001
TD (% , n)	10.49%, 28	5.95%, 22	4.52%, 7	0.06	–	< 0.001
TS (% , n)	1.49%, 4	0.27%, 1	–	0.08	–	0.15
NVIQ	95.6 (23.2)	113.3 (14.7)	100.2 (19.8)	0.1	32.0	< 0.001
SRS T-score	72.2 (12.6)	46.0 (8.5)	44.4 (7.8)	0.6	556.6	< 0.001
ADI—A	16.4 (9.5)	–	–	–	–	–
ADI—B	11.5 (7.8)	–	–	–	–	–
ADI—C	4.9 (3.5)	–	–	–	–	–
ADI—D	2.6 (1.7)	–	–	–	–	–
ADOS-CSS	4.6 (2.1)	–	–	–	–	–

ASD Autistic individuals, OCD Obsessive–Compulsive Disorder, AD Anxiety Disorders, TD Tic Disorders, TS Tourette Syndrome, NVIQ Non-verbal IQ, ADI-A ADI-Social interaction domain score, ADI-B ADI-Communication domain score, ADI-C Stereotypes and restricted interests domain score, ADI-D ADI-before 36 months symptoms score, ADOS-CSS ADOS-Calibrated severity score

\*Chi-squared value

### Exploration of RRBI

To explore the diversity of RRBI in all subjects in the study, we used the Repetitive Behavior Scale-Revised (RBS-R) [35] and the Yale-Brown Obsessive Compulsive Scale (Y-BOCS) [23], both considered as gold standard questionnaires to explore repetitive/stereotyped behaviors and obsessive-compulsive symptoms, respectively. The use of these 2 scales simultaneously and whatever the clinical profile of individuals we investigated allowed the exploration of the wide span of RRBI. For the purpose of the study, we used a self-report version of the Y-BOCS designed by the Tourette Syndrome Association Genetic Consortium (January 1995) [23]. This instrument, based on the symptom checklist and ordinal scales of the Y-BOCS, was used as parental hetero-questionnaires for children and as self-questionnaires for adults. The concordance for expert clinicians' assessment of obsessive-compulsive symptom severity was excellent [61].

### Brain volume estimations based on magnetic resonance imaging

MRI data were collected for a subsample of the subjects included in the study ( $n=152$ ), gathering 42 individuals with ASD, 89 first-degree relatives and 13 subjects from the general population (Additional file 1: Table S1). Acquisitions were performed using the following parameters: spoiled gradient recalled echo (SPGR), 1 mm isotropic, repetition time (TR)=25 ms, echo time (TE)=6 ms, flip angle=30°. For all participants, MRI data were collected using previously described parameters, with a 1.5 Tesla scanner using a T1-Weighted acquisition [44]. Raw DICOM images were converted to NIFTI format with `dcm2niix` (<https://github.com/rordenlab/dcm2niix>) and defaced with `MRIdface` [5]. Cortical reconstruction and volumetric segmentation were performed with `FreeSurfer` software version 6.0.0 (<http://surfer.nmr.mgh.harvard.edu/>), and visual control of the segmentation quality was done using the `QCAPP` (<https://github.com/neuroanatomy/QCApp>).

### Statistical Analysis

The demographic and clinical characteristics of the three groups of participants (autistic individuals, their first-degree relatives and TD) were compared using the Student's  $t$  test and the  $X^2$  test for continuous and discrete variables, respectively. To investigate the dimensions underlying RRBI variability, we performed a principal component analysis (PCA). We first standardized item-related scores from the RBS-R and the Y-BOCS. We then ran general linear models adjusted for age, sex, and age\*sex interactions to generate residuals (Additional file 1: Tables S2 and S3). PCA with

varimax rotation was then performed on the residual standardized RRBI values, including all the participants enrolled in the study regardless of their status. The number of factors was defined after visual exploration of the screen plot. To identify the items belonging to a specific factor, we observed which items had high loadings ( $>|0.20|$ ) for a specific factor but low loadings ( $<|0.10|$ ) for the others. PCA was performed using `JMP Pro 16.0` (SAS Inc., Cary, NC).

To explore the interactions between RRBI-derived factors and brain volumes, we ran a similar analysis on brain volumes extracted from automatic segmentation of the gray and white matter structures. Each brain volume was standardized. We also used general linear models adjusted for age, sex, and age\*sex interactions to generate structural brain volume residuals. The relationship between the RRBI-derived factors and standardized structural brain volume residuals was explored using linear regression methods. All tests were two-tailed. Type I error rate was controlled using the false discovery rate (FDR) method. Statistical analysis was performed using Python packages (Python Software Foundation. Python Language Reference, version 2.7). Brain map figures were generated using the `ENIGMA` toolbox [38].

## Results

### Dimensionality of the RRBI symptoms

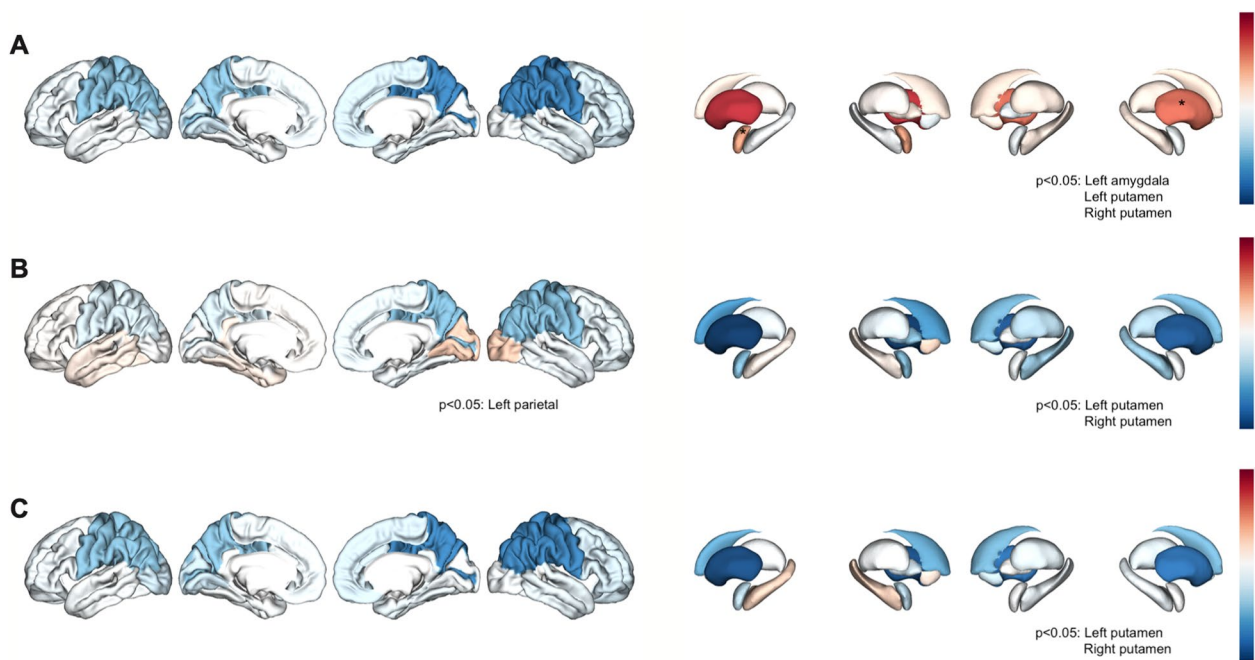
To explore the main dimensions underlying the diversity of RRBI reported in subjects enrolled in the study, we ran a principal component analysis. After visual inspection, we identified 3 main factors which accounted for 30.3% of the cumulative variance (Additional file 1: Table S4). Factor 1 (FA1, 12.7% of the variance) reflecting the 'motor-driven' RRBI or 'sensory motor behaviors / compulsions', with 43 items belonging to the RBS-R scale except one from the Y-BOCS. This item reflected the need to repeat routine activities—a frequent symptom reported in autistic patients, often associated with emotional dysregulation. In contrast, Factors 2 and 3 gathered mainly Y-BOCS-related items, reflecting the 'cognitively driven' RRBI. Factor 2 encompassed 22 items, all from the Y-BOCS (FA2, 8.8% of the variance). FA2 gathered symmetry and ordering symptoms that may represent a 'rigidity/insistence on sameness' dimension. Factor 3 aggregated items associated with washing, checking, contamination and aggressive obsessive-compulsive symptoms (FA3, 7.9% of the variance). The subjects' scores showed a similar repartition depending on their conditions (autistic, related or TD) among the 3 factors (Additional file 3: Fig. S2).

**Correlates between structural brain volumes and RRBI-related dimensions**

We then explored the relationships between the RRBI-related dimensions and structural brain volume residuals using simple linear regressions (Fig. 1, Table 2, Additional file 2: Fig. S1). FA1 was associated with increased left and right putamen volumes ( $R^2=0.06$ ,  $F=8.84$ , regression coefficient=0.75, uncorrected  $p < 10^{-3}$ ,  $r=0.24$ ;  $R^2=0.04$ ,  $F=5.48$ , regression coefficient=0.58, uncorrected  $p < 10^{-3}$ ,  $r=0.20$ ). An interaction between FA1 and the left amygdala volume was also observed ( $R^2=0.03$ ,  $F=4.18$ , regression coefficient=0.03, uncorrected  $p=0.04$ ,  $r=0.17$ ). Our results were coherent with a recurrently reported brain volume increase in the amygdala in individuals with autism or anxiety disorders. However, the associations we reported did not survive adjustment for multiple comparisons (FA1 and left amygdala volume: corrected  $p=0.41$ ; FA1 and left putamen volume: corrected  $p=0.10$ , FA1 and right putamen volume: corrected  $p=0.30$ ) (Fig. 1A, Table 2).

FA2 was also associated with decreased left and right putamen volumes (respectively,  $R^2=0.06$ ,

$F=8.06$ , regression coefficient = -1.12, uncorrected  $p < 10^{-3}$ ,  $r = -0.24$ ;  $R^2=0.04$ ,  $F=5.31$ , regression coefficient = -0.89, uncorrected  $p=0.02$ ,  $r = -0.19$ ) and decreased left parietal volume ( $R^2=0.001$ ,  $F=0.16$ , regression coefficient = -0.18, uncorrected  $p < 10^{-3}$ ,  $r = -0.05$ ). Interestingly, decreased volume in the parietal lobe was associated in the literature with impairment in high-order cognitive processes, mainly executive dysfunctions. Despite the relevance of our findings, their significance did not survive after multiple comparisons correction (FA2 and left putamen volume: corrected  $p=0.15$ ; FA2 and right putamen volume: corrected  $p=0.33$ ; FA2 and left parietal volume: corrected  $p=0.10$ ) (Fig. 1B and Table 2). Similarly, FA3 was linked to decreased left and right putamen volumes ( $R^2=0.04$ ,  $F=6.20$ , coefficient = -0.92, uncorrected  $p=0.01$ ,  $r = -0.21$ ;  $R^2=0.32$ ,  $F=4.60$ , coefficient = -0.78, uncorrected  $p=0.03$ ,  $r = -0.18$ ). This association did not persist after correction for multiple comparisons (FA3 and left putamen volume: corrected  $p=0.41$ ; FA3 and right putamen volume: corrected  $p=0.44$ ) (Fig. 1C and Table 2).



**Fig. 1** Brain map of linear regression-derived coefficients regarding the relationship between repetitive and restricted behaviors and interests-related factors and neuroanatomic structures. **A** Representation of the linear regression-derived coefficient obtained for each cortical volume (at left) and subcortical volume (at right) considering Factor 1. Extreme values of the linear regression-derived coefficients are represented in blue (< -1) and in red (> +1). *P* values < 0.05 before FDR correction were obtained for the left amygdala, left putamen and right putamen volumes; **B** Representation of the linear regression-derived coefficient obtained for each cortical volume (at left) and subcortical volume (at right) considering Factor 2. Extreme values of the linear regression-derived coefficients are represented in blue (< -1) and in red (> +1). *P* values < 0.05 before FDR correction were obtained for the left parietal, left putamen and right putamen volumes; **C** Representation of the linear regression-derived coefficient obtained for each cortical volume (at left) and each subcortical volume (at right) considering Factor 3. Extreme values of the linear regression-derived coefficients are represented in blue (< -1) and in red (> +1). *P* values < 0.05 before FDR correction were obtained for the left amygdala, left putamen and right putamen volumes

**Table 2** Linear regressions between the factors and each cortical, subcortical, cerebellar and callous structures

	Factor 1					Factor 2					Factor 3				
	F	R <sup>2</sup>	Coef	p	FDR	F	R <sup>2</sup>	Coef	p	FDR	F	R <sup>2</sup>	Coef	p	FDR
<i>Cortical structures</i>															
Left frontal	0.09	0.001	0.12	0.75	0.91	0.003	0.0001	0.03	0.99	0.99	0.04	0.0001	-0.10	0.85	0.97
Right frontal	0.23	0.002	0.17	0.63	0.90	0.05	0.0001	-0.12	0.82	0.99	0.17	0.001	-0.21	0.68	0.97
Left occipital	0.52	0.004	0.16	0.47	0.90	0.0003	0.0001	-0.01	0.99	0.99	0.49	0.003	-0.23	0.49	0.97
Right occipital	0.94	0.007	0.22	0.33	0.90	0.51	0.004	0.26	0.48	0.87	0.03	0.0001	-0.05	0.87	0.97
Left parietal	0.29	0.002	0.16	0.59	0.90	0.16	0.001	-0.18	<b>0.001</b>	0.10	0.95	0.007	-0.43	0.33	0.97
Right parietal	1.37	0.01	0.34	0.24	0.90	0.98	0.007	-0.45	0.32	0.86	2.66	0.02	-0.69	0.11	0.44
Left temporal	1.02	0.007	0.28	0.31	0.90	0.08	0.001	0.12	0.78	0.99	0.01	0.0001	-0.04	0.93	0.97
Right tempora	0.64	0.005	0.21	0.42	0.90	0.06	0.0001	-0.09	0.83	0.99	0.09	0.001	-0.12	0.76	0.97
<i>Subcortical structures</i>															
Left accumbens	0.25	0.002	-0.09	0.62	0.90	0.54	0.004	0.21	0.46	0.87	0.23	0.002	0.13	0.64	0.97
Right accumbens	0.32	0.002	0.11	0.57	0.90	0.58	0.004	-0.22	0.45	0.87	0.63	0.005	-0.22	0.43	0.97
Left amygdala	<b>4.18</b>	0.030	0.41	<b>0.04</b>	0.41	1.89	0.01	-0.44	0.17	0.75	0.80	0.006	-0.27	0.37	0.97
Right amygdala	0.10	0.001	-0.06	0.76	0.91	0.02	0.0001	-0.04	0.89	0.75	0.002	0.0001	-0.01	0.97	0.97
Left caudate	0.38	0.003	0.13	0.54	0.90	3.39	0.02	-0.61	0.07	0.66	2.94	0.02	-0.53	0.89	0.97
Right caudate	0.64	0.43	0.16	0.43	0.90	2.25	0.02	-0.48	0.14	0.75	2.65	0.02	-0.48	0.11	0.44
Left hippocampus	0.02	0.0001	-0.03	0.89	0.92	0.08	0.001	0.09	0.78	0.98	0.51	0.004	0.23	0.47	0.97
Right hippocampus	0.35	0.002	0.12	0.55	0.90	1.48	0.01	-0.39	0.23	0.78	0.07	0.001	-0.08	0.79	0.97
Left pallidum	0.21	0.002	0.13	0.64	0.90	1.04	0.008	-0.43	0.31	0.86	0.25	0.002	-0.19	0.62	0.97
Right pallidum	0.17	0.001	-0.10	0.68	0.90	0.003	0.0001	-0.02	0.96	0.99	0.004	0.0001	0.02	0.95	0.97
Left putamen	<b>8.84</b>	0.06	<b>0.75</b>	<b>0.003</b>	0.10	<b>8.06</b>	0.06	<b>-1.12</b>	<b>0.005</b>	0.15	<b>6.20</b>	0.04	<b>-0.92</b>	<b>0.01</b>	0.41
Right putamen	<b>5.48</b>	0.04	<b>0.58</b>	<b>0.02</b>	0.30	<b>5.31</b>	0.04	<b>-0.89</b>	<b>0.02</b>	0.33	<b>4.60</b>	0.32	<b>-0.78</b>	<b>0.03</b>	0.44
Left thalamus	0.04	0.0001	0.05	0.84	0.92	0.08	0.001	-0.11	0.78	0.99	0.005	0.0001	-0.03	0.94	0.97
Right thalamus	0.20	0.001	0.11	0.65	0.90	0.58	0.004	-0.29	0.45	0.86	0.12	0.001	-0.12	0.73	0.97
<i>Cerebellum</i>															
Left Cerebellum	0.01	0.01	0.27	0.19	0.90	1.38	0.01	-0.37	0.24	0.78	1.03	0.007	-0.29	0.31	0.97
Right Cerebellum	1.33	0.01	0.24	0.25	0.90	0.83	0.006	-0.30	0.36	0.87	0.66	0.005	-0.24	0.42	0.97
<i>Corpus Callosum</i>															
Anterior corpus callosum	1.57	0.001	-0.004	0.19	0.98	0.01	0.0001	0.02	0.93	0.99	0.13	0.001	-0.09	0.72	0.97
Mid anterior corpus callosum	0.02	0.001	-0.02	0.89	0.92	0.04	0.0001	0.05	0.84	0.99	0.09	0.001	-0.07	0.77	0.97
Central corpus callosum	0.33	0.001	0.56	0.56	0.90	0.30	0.002	0.14	0.59	0.99	0.12	0.001	0.08	0.73	0.97
Midposterior corpus callosum	0.57	0.004	0.14	0.45	0.90	2.39	0.02	-0.43	0.13	0.75	2.98	0.02	-0.44	0.08	0.44
Posterior corpus callosum	0.02	0.001	0.03	0.89	0.92	1.81	0.01	-0.46	0.18	0.75	2.89	0.02	-0.54	0.09	0.44

F value, R-squared, linear regression-derived coefficients (Coef), standard errors (SE) and p value from the linear regressions were reported; FDR: False Discovery Rate was calculated to correct for multiple testing. In bold, non-corrected p value < 0.05

**Discussion**

The challenges in identifying biomarkers in neurodevelopmental disorders, particularly in autism, stem from the difficulties researchers have in considering the inter-individual phenotypic variability. It ranges from those with a developmental trajectory in the normal range (although carrying environmental and/or genetic vulnerability risk factors) to individuals with mild to severe impairment. The purpose of our study was, therefore, to account for this inter-individual variability by exploring the spectrum of RRBI assessed in a large population of individuals with autism, their unaffected first-degree relatives, and

controls from the general population. Interestingly, our results underlined the potential implication of the putamen in the RRBI: an increase in the volume of the putamen was associated with 'low-order' symptoms (mainly stereotyped behaviors) and on the opposite, a decrease in the putamen volume with cognitively driven symptoms (mainly obsessive-compulsive symptoms).

**Dimensionality of the RRBI symptoms**

The factor analysis revealed the multidimensionality of RRBI by identifying three dimensions: FA1 gathered the RBS-R-related items typically observed in autism [13,

32]; FA2 put together the items related to rigidity/insistence on sameness from the Y-BOCS, symptoms which were trait features of the individuals with autism but also those with obsessive–compulsive symptoms [65, 68]; and FA3 that included only Y-BOCS related items usually displayed by individuals with OCD [17]. Interestingly, FA2 put together the symmetry and ordering of obsessions/compulsions and the need to repeat things. These symptoms were described in the literature as settled clinical characteristics of autistic children with comorbid OCD [55]. Symmetry and ordering symptoms are frequently reported in the developmental subtype of OCD, which—beyond its juvenile onset—is characterized by an increased proportion of neurodevelopmental comorbidities, including Tourette's syndrome, ADHD, and autism, but also by significant impairment in executive functions [11, 16, 24]. A few studies have highlighted the link between the intensity of symmetry/ordering symptoms and poor verbal working memory, visuospatial planning, inhibitory control, and cognitive flexibility abilities [11]. Thus, among the characteristics shared by children with autism and OCD, executive dysfunction may play a critical role in these disorders [10, 30]. Interestingly, unaffected first-degree parents of children with OCD or autism also showed executive impairments [17, 47, 59]. Overall, FA2 dimension we identified may be a testimony of the cumulative impact of executive impairment and the presence of RRBI. Finally, the FA3 dimension was driven by OCD-related symptoms since gathering the washing, checking, contamination, and aggressive symptoms [36, 55]. This dimension was probably less related to autism but more a proxy of obsessive–compulsive symptoms [40, 45].

#### **Correlation between structural brain volumes and RRBI-related dimensions**

Our results were in line with publications stressing the critical role of the cortico-thalamic-striatal-cortical loop in RRBI. Our study revealed a central implication of the putamen across the 3 distinct dimensions we reported, as well as specific roles of subcortical and cortical structures per FA, which may shape the diversity of symptoms, agglomerated on the dimensions. The positive association of the putamen and the left amygdala with FA1 was consistent with the role of the putamen in autonomic movements, described in complex motor stereotypies [43] and in autism [19, 37, 46, 53]. Including the putamen, the basal ganglia play important roles in regulating repetitive behaviors (notably in autism) in association with the hippocampus, the hypothalamus, but also other neuroanatomical structures of the limbic system (including the amygdala) [22]. Obviously, amygdala volume

abnormalities were more usually related to anxiety, and more specifically to social anxiety in autism [3, 22, 31].

In contrast to the positive association of the putamen volume with FA1, we observed a negative relationship with FA2 and FA3. Interestingly, our results replicated those of the ENIGMA-OCD consortium, which also reported a reduced putamen volume in OCD [62, 63]. This reduced putamen volume may relate more to the compulsive component than the obsessive one in OCD [9]. FA2 was associated in addition to the decreased volume of the parietal cortex. Similar parietal abnormalities in cortical thickness, volume or surface area, may reflect the cortical dysmaturations in this area, frequently reported in children with OCD and autism [6, 53, 54]. Interestingly, the parietal cortex is involved in social interactions, motor learning and repetitive behaviors in autism [64] but also participates in cognitive inflexibility, which is coherent with the sameness nature of RRBI-related symptoms encompassed by FA2 [26]. Bidirectional associations between RRBI and putamen volume highlighted its pivotal role, implying the presence of modulators beyond the putamen. Although FA1, FA2 and FA3 were distinct factors, shared neural underpinnings might contribute to their clinical similarity.

#### **Limitations**

Our study was conducted retrospectively in relation to the initial research project using a 1.5 T MRI and FreeSurfer, which reduced the data acquisition and segmentation precision of the brain structure, especially the subcortical ones such as the putamen. Nevertheless, we maintained the quality of FreeSurfer segmentations through a visual quality check in our study. Furthermore, the use of FreeSurfer segmentation facilitated comparisons with large cohorts such as ENIGMA, enhancing the relevance of our results. The lack of power of the brain imaging part of our study did not allow us to explore the brain asymmetry structures associated with the dimensions we reported. We, however, observed a trend for a leftward asymmetry (based on  $p$  value and coefficients  $L > R$ ). A similar leftward brain asymmetry involving the putamen was previously reported in autism and OCD [7, 28, 34, 51, 54]. The role and impact of this brain asymmetry on the symptomatology of ASD and OCD remained unclear but may result from aberrant brain development trajectories.

When exploring the dimensions gathering the RRBI phenotypic variability, we did not investigate the gender's impact on RRBI due to the limited sample size of females, which was a significant limitation [1, 2, 21, 60]. Nevertheless, we conducted sub-analyses exclusively on male subjects, maintaining the consistent item composition of the three FAs. (Additional file 1: Table S5). We also did



not include the effect of potential covariates, such as the whole pattern of comorbidities or the effect of executive dysfunctions, as mentioned above. For example, planning strategy impairments consistently reported in probands, and their first-degree relatives may specifically participate in FA2 [8]. Based on scales (RBS-R and Y-BOCS), respectively, dedicated to repetitive behaviors in autism and obsessive–compulsive symptoms, our study was limited by their own constructions, which impacted on the dimensional approach. Future research would explore whether similar dimensions emerge when using a single integrated scale [48].

Finally, one additional limitation may result from the wide range of ages of individuals enrolled in our study. This might have biased the volume estimates of the small brain structures, specifically subcortical structures such as the putamen or the amygdala, since it relied on a limited number of voxels [27, 42, 57]. This effect may result from the opposite coefficient direction of the regression analysis, we reported between FA1 and the neuro-anatomical structures (positive regression) and between FA2 or FA3 (negative regression) and these. FA1 more reflected the autistic-related symptoms and thus was mainly based on symptoms displayed by probands with autism, younger than relatives and controls enrolled in our study. Moreover, our study was based on cross-sectional, not longitudinal, which limited the exploration of changes in trajectories reported in autism and OCD [25, 41, 49].

## Conclusion

Our results stressed the pivotal role of the putamen in the determinism of RRBI. Variations in the putamen volume, in association with variations in cortical structures, influence the phenomenology of repetitive behaviors in individuals with autism, their relatives, and individuals from the control population. Exploration of the integrative role of the putamen needs to be strengthened in this specific context.

## Abbreviations

ADI-R	Autism diagnosis interview-revised
ADHD	Attention deficit hyperactivity disorder
ADOS-2	Autism diagnostic observation scale second edition
ADOS-2 CSS	Autism diagnostic observation schedule -second edition calibrated severity score
ASD	Autism spectrum disorder
DSM	Diagnostic and statistical manual of mental disorders
K-SADS-PL	Kiddie-schedule for affective disorders and schizophrenia for school age children, present and lifetime version
FA	Factor analysis
IQ	Intellectual quotient
OCD	Obsessive–compulsive disorder
MRI	Magnetic resonance imaging
PARIS	Paris autism research international sib-pair
RRBI	Repetitive and restricted behaviors and interests

RPM Raven's progressive matrices  
TD Typically developing

## Supplementary Information

The online version contains supplementary material available at <https://doi.org/10.1186/s13229-023-00576-z>.

**Additional file 1: Table S1.** Clinical and demographic characteristics of the individuals enrolled in the study with MRI data. **Table S2.** Yale-Brown Obsessive Compulsive Scale Symptom Checklist Category Residuals Normalized Scores (Data are mean  $\pm$  SD). **Table S3.** Repetitive Behaviors Scale - Revised Residuals Normalized Scores (Data are mean  $\pm$  SD). **Table S4.** Item loading for the three factors yielded an analysis factor for the items of the Y-BOCS and the RBS-R, and domains related to each item among all participants. **Table S5.** Item loading for the three factors yielded an analysis factor for the items of the Y-BOCS and the RBS-R, and domains related to each item among male participants.

**Additional file 2: Fig. S1.** Linear regressions between repetitive and restricted behaviors and interests-related factors and the neuroanatomical volumes with a high absolute coefficient and a non-corrected  $p$  value  $< 0.05$ . At the top, the figures represent the regressions between Factor 1 and the left putamen volume (at the left), the right putamen volume (in the middle) and the left amygdala volume (at the right). At the middle, the figures represent the regressions between Factor 2 and the left putamen volume (at the left), the right putamen volume (in the middle) and the left parietal volume (at the right). At the bottom, the figures represent the regressions between Factor 3 and the left putamen volume and the right putamen volume. The figures show an outlier to FA values. Excluding this outlier, the linear regressions between the three FA and the left and right putamen structures maintain a non-corrected  $p$  value  $< 0.05$ , not between Factor 1 and the left amygdala volume, nor between Factor 2 and the left parietal volume.

**Additional file 3: Fig. S2.** Boxplots representing the distribution of individual scores by group [autistic (in blue), relatives (in orange) and controls (in red) groups] for FA1 (at the left), FA2 (in the middle), FA3 (at the right).

## Acknowledgements

We gratefully acknowledge all individuals who participated in the study and the Clinical Investigation Center of the Robert Debre Hospital (Paris, France).

## Author contributions

AL, NT, AM, AB, DG, AA, ML, DU, CC, LM, MB, MA, ML, TB, RT, GD, CM, RD designed the study. AL, AP, AM, AB, ME, DG, AA, MA, RD collected the data. AL conducted the analyses. AL, NT, RT, CM and RD made substantial contributions to the interpretation of the data. AL, CM, and RD wrote the first and final draft of the manuscript. All author(s) read and approved the final manuscript.

## Funding

This study was part of a large genetic study sponsored by INSERM and funded by the Institut Pasteur, INSERM, Fondation FondaMental, APHP, Fondation de France, Fondation à la Recherche Médicale, Roche Institute for Research and Translational Medicine, and Investissements d'Avenir program (ANR-11-IDEX-0004-02, ANR-10-COHO-10-01, ANR-12-SAMA-0014).

## Availability of data and materials

The datasets generated and/or analyzed during the current study are not publicly available due to an embargo period but are available from the corresponding author on reasonable request.

## Declarations

### Ethics approval and consent to participate.

All participants (where appropriate) and their parent/legal guardian provided written informed consent. The Paris Autism Research International Sib-pair (PARIS) study sample was granted approval by the local Ethics Committee or "Comité de Protection des Personnes" on 2008 November 14th, authorized

by the French authorities (ANSM B80738-70 on 2008, August 11th), and registered in a public trial registry (NCT02628808).

#### Consent for publication

Consent for publication was obtained from all participants prior to the study.

#### Competing interests

The authors have no competing interests to declare.

#### Author details

<sup>1</sup>Fondation Vallée, GHT Paris Sud, Hospital of Child and Adolescent Psychiatry, Gentilly, France. <sup>2</sup>UMR 3571 CNRS, Human Genetics and Cognitive Functions, Institut Pasteur, Paris, France. <sup>3</sup>Unité de Neuroanatomie Appliquée et Théorique, Institut Pasteur, Paris, France. <sup>4</sup>Department of Child and Adolescent Psychiatry, Robert Debré Hospital, APHP, Paris, France. <sup>5</sup>Department of Pediatric Radiology, Robert-Debré Hospital, APHP, Paris, France. <sup>6</sup>UNIACT Neurospin – INSERM UMR 1129, CEA, Saclay, France. <sup>7</sup>Department of Clinical Genetics, Robert Debré Hospital, APHP, Paris, France. <sup>8</sup>Center for Research and Interdisciplinarity (CRI), Université Paris Cité, Paris, France. <sup>9</sup>Autism Expert Center, Charles Perrens Hospital, Bordeaux, France. <sup>10</sup>Fondation FondaMental, French National Science Foundation, Créteil, France. <sup>11</sup>Institut Roche, Boulogne-Billancourt, France. <sup>12</sup>Roche Pharma Research and Early Development, Neuroscience and Rare Diseases, Roche Innovation Center Basel, F. Hoffmann–La Roche Ltd., Basel, Switzerland. <sup>13</sup>Institut National de la Santé et de la Recherche Médicale (INSERM), U955, Institut Mondor de Recherche Biomedicale, Psychiatrie Translacionnelle, Créteil, France. <sup>14</sup>Department of Adult Psychiatry, Henri Mondor and Albert Chenevier Hospital, Créteil, France. <sup>15</sup>Université Paris Cité, Paris, France. <sup>16</sup>Department of Psychiatry, Université de Montreal, CHU Ste Justine Hospital, Montreal, QC, Canada. <sup>17</sup>Imaging Genetics Center, Stevens Neuroimaging and Informatics Institute, Keck School of Medicine of USC, Los Angeles, CA, USA. <sup>18</sup>Faculty of Medicine, Université Paris-Saclay, Le Kremlin-Bicêtre, France.

Received: 10 April 2023 Accepted: 6 November 2023

Published online: 27 November 2023

#### References

- Antezana L, Factor RS, Condy EE, Stregre MV, Scarpa A, Richey JA. Gender differences in restricted and repetitive behaviors and interests in youth with autism. *Autism Res Off J Int Soc Autism Res*. 2019;12(2):274–83. <https://doi.org/10.1002/aur.2049>.
- Beggiato A, Peyre H, Maruani A, Scheid I, Rastam M, Amsellem F, Gillberg CI, Leboyer M, Bourgeron T, Gillberg C, Delorme R. Gender differences in autism spectrum disorders: divergence among specific core symptoms. *Autism Res Off J Int Soc Autism Res*. 2017;10(4):680–9. <https://doi.org/10.1002/aur.1715>.
- Bellani M, Calderoni S, Muratori F, Brambilla P. Brain anatomy of autism spectrum disorders I. Focus on corpus callosum. *Epidemiol Psychiatr Sci*. 2013. <https://doi.org/10.1017/S2045796013000139>.
- Bey AL, Wang X, Yan H, Kim N, Passman RL, Yang Y, Cao X, Towers AJ, Hulbert SW, Duffney LJ, Gaidis E, Rodriguez RM, Wetsel WC, Yin HH, Jiang Y. Brain region-specific disruption of Shank3 in mice reveals a dissociation for cortical and striatal circuits in autism-related behaviors. *Transl Psychiatry*. 2018. <https://doi.org/10.1038/s41398-018-0142-6>.
- Bischoff-Grethe A, Ozyurt IB, Busa E, Quinn BT, Fennema-Notestine C, Clark CP, Morris S, Bondi MW, Jernigan TL, Dale AM, Brown GG, Fischl B. A technique for the deidentification of structural brain MR images. *Hum Brain Mapp*. 2007;28(9):892–903. <https://doi.org/10.1002/hbm.20312>.
- Boedhoe PSW, Schmaal L, Abe Y, Alonso P, Ameis SH, Anticevic A, Arnold PD, Batistuzzo MC, Benedetti F, Beucke JC, Bollettini I, Bose A, Brem S, Calvo A, Calvo R, Cheng Y, Cho KIK, Ciullo V, Dallaspezia S, ENIGMA OCD Working Group. Cortical abnormalities associated with pediatric and adult obsessive-compulsive disorder: findings from the ENIGMA obsessive-compulsive disorder working group. *Am J Psychiatry*. 2018;175(5):453–62. <https://doi.org/10.1176/appi.ajp.2017.17050485>.
- Boedhoe PSW, Schmaal L, Abe Y, Ameis SH, Arnold PD, Batistuzzo MC, Benedetti F, Beucke JC, Bollettini I, Bose A, Brem S, Calvo A, Cheng Y, Cho KIK, Dallaspezia S, Denys D, Fitzgerald KD, Fouché J-P, Giménez M, van den Heuvel OA. Distinct subcortical volume alterations in pediatric and adult OCD: a worldwide meta- and mega-analysis. *Am J Psychiatry*. 2017;174(1):60–9. <https://doi.org/10.1176/appi.ajp.2016.16020201>.
- Bora E. Meta-analysis of neurocognitive deficits in unaffected relatives of obsessive-compulsive disorder (OCD): comparison with healthy controls and patients with OCD. *Psychol Med*. 2020;50(8):1257–66. <https://doi.org/10.1017/S0033291720001634>.
- Bowen Z, Changlian T, Qian L, Wanrong P, Huihui Y, Zhaoxia L, Feng L, Jinyu L, Xiongzhao Z, Mingtian Z. Gray matter abnormalities of orbito-frontal cortex and striatum in drug-naïve adult patients with obsessive-compulsive disorder. *Front Psych*. 2021;12:674568. <https://doi.org/10.3389/fpsy.2021.674568>.
- Boyd BA, McBee M, Holtzclaw T, Baranek GT, Bodfish JW. Relationships among repetitive behaviors, sensory features, and executive functions in high functioning autism. *Res Autism Spectr Disord*. 2009;3(4):959–66. <https://doi.org/10.1016/j.rasd.2009.05.003>.
- Bragdon LB, Gibb BE, Coles ME. Does neuropsychological performance in OCD relate to different symptoms? A meta-analysis comparing the symmetry and obsessing dimensions. *Depress Anxiety*. 2018;35(8):761–74. <https://doi.org/10.1002/da.22785>.
- Casado-Sainz A, Gudmundsen F, Baerentzen SL, Lange D, Ringsted A, Martinez-Tejada I, Medina S, Lee H, Svarer C, Keller SH, Schain M, Kjaerby C, Fisher PM, Cumming P, Palmer M. Dorsal striatal dopamine induces fronto-cortical hypoactivity and attenuates anxiety and compulsive behaviors in rats. *Neuropsychopharmacology*. 2022. <https://doi.org/10.1038/s41386-021-01207-y>.
- Chaxiong P, Dimian AF, Wolff JJ. Restricted and repetitive behavior in children with autism during the first three years of life: a systematic review. *Front Psychol*. 2022;13:986876. <https://doi.org/10.3389/fpsyg.2022.986876>.
- Constantino JN. Social responsiveness scale. In: Volkmar FR, editor. *Encyclopedia of autism spectrum disorders*. Springer; 2013. p. 2919–29.
- Dajani DR, Uddin LQ. Demystifying cognitive flexibility: Implications for clinical and developmental neuroscience. *Trends Neurosci*. 2015;38(9):571–8. <https://doi.org/10.1016/j.tins.2015.07.003>.
- Darrow SM, Hirschtritt ME, Davis LK, Illmann C, Osiecki L, Grados M, Sandor P, Dion Y, King R, Pauls D, Budman CL, Cath DC, Greenberg E, Lyon GJ, Yu D, McGrath LM, McMahon WM, Lee PC, Delucchi KL, Tourette Syndrome Association International Consortium for Genetics. Identification of two heritable cross-disorder endophenotypes for tourette syndrome. *Am J Psychiatry*. 2017;174(4):387–96. <https://doi.org/10.1176/appi.ajp.2016.16020240>.
- Delorme R, Goussé V, Roy I, Trandafir A, Mathieu F, Mouren-Siméoni M-C, Betancur C, Leboyer M. Shared executive dysfunctions in unaffected relatives of patients with autism and obsessive-compulsive disorder. *Eur Psychiatry*. 2007;22(1):32–8. <https://doi.org/10.1016/j.eurpsy.2006.05.002>.
- Evans DW, Ujarević M, Lusk LG, Loth E, Frazier T. Development of two dimensional measures of restricted and repetitive behavior in parents and children. *J Am Acad Child Adolescent Psychiatry*. 2017. <https://doi.org/10.1016/j.jaac.2016.10.014>.
- Ferhat A-T, Verpy E, Biton A, Forget B, De Chaumont F, Mueller F, Le Sourd A-M, Coqueran S, Schmitt J, Rochefort C, Rondi-Reig L, Lebourcier A, Boland A, Fin B, Deleuze J-F, Boeckers TM, Ey E, Bourgeron T. Excessive self-grooming, gene dysregulation and imbalance between the striosome and matrix compartments in the striatum of Shank3 mutant mice. *Front Mol Neurosci*. 2023. <https://doi.org/10.3389/fnmol.2023.1139118>.
- Fouché J-P, et al. Cortical thickness in obsessive-compulsive disorder: multisite mega-analysis of 780 brain scans from six centres. *Br J Psychiatry* *J Mental Sci*. 2017;210(1):67–74. <https://doi.org/10.1192/bjp.bp.115.164020>.
- Frazier TW, Georgiades S, Bishop SL, Hardan AY. Behavioral and cognitive characteristics of females and males with autism in the simons simplex collection. *J Am Acad Child Adolesc Psychiatry*. 2014;53(3):329–40. <https://doi.org/10.1016/j.jaac.2013.12.004>.
- Gandhi T, Lee CC. Neural mechanisms underlying repetitive behaviors in rodent models of autism spectrum disorders. *Front Cell Neurosci*. 2021;14:463. <https://doi.org/10.3389/fncel.2020.592710>.
- Goodman WK, Price LH, Rasmussen SA, Mazure C, Fleischmann RL, Hill CL, Heninger GR, Charney DS. The yale-brown obsessive compulsive scale: I. Development, use, and reliability. *Archiv General Psychiatry*.

- 1989;46(11):1006–11. <https://doi.org/10.1001/archpsyc.1989.01810110048007>.
24. Grassi G, Cecchelli C, Mazzocato G, Vignozzi L. Early onset obsessive-compulsive disorder: the biological and clinical phenotype. *CNS Spectr*. 2022;27(4):421–7. <https://doi.org/10.1017/S1092852921000122>.
  25. Greimel E, Nehrkorn B, Schulte-Rüther M, Fink GR, Nickl-Jockschat T, Herpertz-Dahlmann B, Konrad K, Eickhoff SB. Changes in grey matter development in autism spectrum disorder. *Brain Struct Funct*. 2013;218(4):929–42. <https://doi.org/10.1007/s00429-012-0439-9>.
  26. Gruner P, Pittenger C. Cognitive inflexibility in obsessive-compulsive disorder. *Neuroscience*. 2017;345:243–55. <https://doi.org/10.1016/j.neuroscience.2016.07.030>.
  27. Herten A, Konrad K, Krinzing H, Seitz J, von Polier GG. Accuracy and bias of automatic hippocampal segmentation in children and adolescents. *Brain Struct Funct*. 2019;224(2):795–810. <https://doi.org/10.1007/s00429-018-1802-2>.
  28. van den Heuvel OA, et al. An overview of the first 5 years of the ENIGMA obsessive-compulsive disorder working group: The power of worldwide collaboration. *Hum Brain Mapp*. 2022;43(1):23–36. <https://doi.org/10.1002/hbm.24972>.
  29. Hollander E, King A, Delaney K, Smith CJ, Silverman JM. Obsessive-compulsive behaviors in parents of multiplex autism families. *Psychiatry Res*. 2003;117(1):11–6. [https://doi.org/10.1016/S0165-1781\(02\)00304-9](https://doi.org/10.1016/S0165-1781(02)00304-9).
  30. Iversen RK, Lewis C. Executive function skills are linked to restricted and repetitive behaviors: three correlational meta analyses. *Autism Res Off J Int Soc Autism Res*. 2021;14(6):1163–85. <https://doi.org/10.1002/aur.2468>.
  31. Jayakar R, Tone EB, Crosson B, Turner JA, Anderson PL, Phan KL, Klumpp H. Amygdala volume and social anxiety symptom severity: does segmentation technique matter? *Psychiatry Res Neuroimag*. 2020;295:111006. <https://doi.org/10.1016/j.psychresns.2019.111006>.
  32. Juijias M, Kelley E, Hall L. Restricted, repetitive behaviors in autism spectrum disorder and obsessive-compulsive disorder: a comparative review. *Child Psychiatry Hum Dev*. 2017;48(6):944–59. <https://doi.org/10.1007/s10578-017-0717-0>.
  33. Kaufman J, et al. K-SADS-PL. *J Am Acad Child Adolesc Psychiatry*. 2000;39(10):1208.
  34. Kong X-Z, Boedhoe PSW, Abe Y, Alonso P, Ameis SH, Arnold PD, Assogna F, Baker JT, Batistuzzo MC, Benedetti F, Beucke JC, Bollettini I, Bose A, Brem S, Brennan BP, Buitelaar J, Calvo R, Cheng Y, Cho KIK, Francks C. Mapping cortical and subcortical asymmetry in obsessive-compulsive disorder: findings from the ENIGMA consortium. *Biol Psychiatry*. 2020;87(12):1022–34. <https://doi.org/10.1016/j.biopsych.2019.04.022>.
  35. Lam KSL, Aman MG. The repetitive behavior scale-revised: independent validation in individuals with autism spectrum disorders. *J Autism Dev Disord*. 2007;37(5):855–66. <https://doi.org/10.1007/s10803-006-0213-z>.
  36. Lamothe H, Godin O, Stengel C, Benmansour S, Burckard S, Brouillet Z, et al. Clinical characteristics of adults suffering from high-functioning autism and comorbid obsessive-compulsive disorder. *Psychiatry Res*. 2022;311:114498. <https://doi.org/10.1016/j.psychres.2022.114498>.
  37. Langen M, Bos D, Noordermeer SDS, Nederveen H, van Engeland H, Durston S. Changes in the development of striatum are involved in repetitive behavior in autism. *Biol Psychiatry*. 2014;76(5):405–11. <https://doi.org/10.1016/j.biopsych.2013.08.013>.
  38. Larivière S, Paquola C, Park B-Y, Royer J, Wang Y, Benkarim O, Vos de Wael R, Valk SL, Thomopoulos SI, Kirschner M, Lewis LB, Evans AC, Sisodiya SM, McDonald CR, Thompson PM, Bernhardt BC. The ENIGMA toolbox: multiscale neural contextualization of multisite neuroimaging datasets. *Nat Methods*. 2021;18(7):698–700. <https://doi.org/10.1038/s41592-021-01186-4>.
  39. Lefebvre A, Cohen A, Maruani A, Amsellem F, Beggato A, Amestoy A, Moal ML-L, Umbrecht D, Chatham C, Murtagh L, Bouvard M, Leboyer M, Bourgeron T, Delorme R. Discriminant value of repetitive behaviors in families with autism spectrum disorder and obsessional compulsive disorder probands. *Autism Res Off J Int Soc Autism Res*. 2021;14(11):2373–82. <https://doi.org/10.1002/aur.2570>.
  40. Lewin AB, Wood JJ, Gunderson S, Murphy TK, Storch EA. Phenomenology of comorbid autism spectrum and obsessive-compulsive disorders among children. *J Dev Phys Disabil*. 2011;23(6):543–53. <https://doi.org/10.1007/s10882-011-9247-z>.
  41. Li Q, Zhao Y, Huang Z, Guo Y, Long J, Luo L, You W, Sweeney JA, Li F, Gong Q. Microstructural white matter abnormalities in pediatric and adult obsessive-compulsive disorder: a systematic review and meta-analysis. *Brain Behav*. 2021;11(2):e01975. <https://doi.org/10.1002/brb3.1975>.
  42. Lidauer K, Pulli EP, Copeland A, Silver E, Kumpulainen V, Hashempour N, Merisaari H, Saunavaara J, Parkkola R, Lähdesmäki T, Saukko E, Nolvi S, Kataja E-L, Karlsson L, Karlsson H, Tuulari JJ. Subcortical and hippocampal brain segmentation in 5-year-old children: validation of FSL-FIRST and FreeSurfer against manual segmentation. *Eur J Neurosci*. 2022;56(5):4619–41. <https://doi.org/10.1111/ejn.15761>.
  43. Mahone EM, Crocetti D, Tochen L, Kline T, Mostofsky SH, Singer HS. Anomalous putamen volume in children with complex motor stereotypies. *Pediatr Neurol*. 2016;65:59–63. <https://doi.org/10.1016/j.pediatrneurol.2016.08.023>.
  44. Maruani A, Huguet G, Beggato A, ElMaleh M, Toro R, Leblond CS, Mathieu A, Amsellem F, Lemièrre N, Verloes A, Leboyer M, Gillberg C, Bourgeron T, Delorme R. 11q24.2–25 micro-rearrangements in autism spectrum disorders: relation to brain structures. *Am J Med Genet Part A*. 2015;167A(12):3019–30. <https://doi.org/10.1002/ajmg.a.37345>.
  45. McDougle CJ, Kresch LE, Goodman WK, Naylor ST, Volkmar FR, Cohen DJ, Price LH. A case-controlled study of repetitive thoughts and behavior in adults with autistic disorder and obsessive-compulsive disorder. *Am J Psychiatry*. 1995;152(5):772–7. <https://doi.org/10.1176/ajp.152.5.772>.
  46. McKinnon CJ, et al. Restricted and repetitive behavior and brain functional connectivity in infants at risk for developing autism spectrum disorder. *Biol Psychiatry Cognitive Neurosci Neuroimaging*. 2019. <https://doi.org/10.1016/j.bpsc.2018.09.008>.
  47. McLean RL, Johnson Harrison A, Zimak E, Joseph RM, Morrow EM. Executive function in probands with autism with average IQ and their unaffected first-degree relatives. *J Am Acad Child Adolesc Psychiatry*. 2014;53(9):1001–9. <https://doi.org/10.1016/j.jaac.2014.05.019>.
  48. Moreno-Amador B, Piqueras JA, Rodríguez-Jiménez T, Martínez-González AE, Cervin M. Measuring symptoms of obsessive-compulsive and related disorders using a single dimensional self-report scale. *Front Psych*. 2023;14:958015. <https://doi.org/10.3389/fpsyg.2023.958015>.
  49. Nickl-Jockschat T, Habel U, Michel TM, Manning J, Laird AR, Fox PT, Schneider F, Eickhoff SB. Brain structure anomalies in autism spectrum disorder—a meta-analysis of VBM studies using anatomic likelihood estimation. *Hum Brain Mapp*. 2012;33(6):1470–89. <https://doi.org/10.1002/hbm.21299>.
  50. Nurnberger JI, Blehar MC, Kaufmann CA, York-Cooler C, Simpson SG, Harkavy-Friedman J, Severe JB, Malaspina D, Reich T. Diagnostic interview for genetic studies. Rationale, unique features, and training. NIMH Genetics Initiative. *Archiv Genet Psychiatry*. 1994;51(11):849–59.
  51. Postema MC, van Rooij D, Anagnostou E, Arango C, Auzias G, Behrmann M, Filho GB, Calderoni S, Calvo R, Daly E, Deruelle C, Di Martino A, Dinstein I, Duran FLS, Durston S, Ecker C, Ehrlich S, Fair D, Fedor J, Francks C. Altered structural brain asymmetry in autism spectrum disorder in a study of 54 datasets. *Nat Commun*. 2019. <https://doi.org/10.1038/s41467-019-13005-8>.
  52. Raven J, Raven J (2003). Raven progressive matrices. In: Handbook of nonverbal assessment, pp 223–237. Kluwer Academic/Plenum Publishers. [https://doi.org/10.1007/978-1-4615-0153-4\\_11](https://doi.org/10.1007/978-1-4615-0153-4_11)
  53. van Rooij D, Anagnostou E, Arango C, Auzias G, Behrmann M, Busatto GF, Calderoni S, Daly E, Deruelle C, Di Martino A, Dinstein I, Duran FLS, Durston S, Ecker C, Fair D, Fedor J, Fitzgerald J, Freitag CM, Gallagher L, Buitelaar JK. Cortical and subcortical brain morphometry differences between patients with autism spectrum disorder and healthy individuals across the lifespan: results from the ENIGMA ASD working group. *Am J Psychiatry*. 2018;175(4):359–69. <https://doi.org/10.1176/appi.ajp.2017.17010100>.
  54. Rus OG, Reess TJ, Wagner G, Zaudig M, Zimmer C, Koch K. Structural alterations in patients with obsessive-compulsive disorder: a surface-based analysis of cortical volume, surface area and thickness. *J Psychiatry Neurosci JPN*. 2017;42(6):395–403. <https://doi.org/10.1503/jpn.170030>.
  55. Ruzzano L, Borsboom D, Geurts HM. Repetitive behaviors in autism and obsessive-compulsive disorder: New perspectives from a network analysis. *J Autism Dev Disord*. 2015;45(1):192–202. <https://doi.org/10.1007/s10803-014-2204-9>.
  56. Scahill L, Aman MG, Lecavalier L, Halladay AK, Bishop SL, Bodfish JW, Grondhuis S, Jones N, Horrigan JP, Cook EH, Handen BL, King BH, Pearson DA, McCracken JT, Sullivan KA, Dawson G. Measuring repetitive behaviors as a treatment endpoint in youth with autism spectrum disorder. *Autism*

- Int J Res Pract. 2015;19(1):38–52. <https://doi.org/10.1177/1362361313510069>.
57. Schoemaker D, Buss C, Head K, Sandman CA, Davis EP, Chakravarty MM, Gauthier S, Pruessner JC. Hippocampus and amygdala volumes from magnetic resonance images in children: assessing accuracy of FreeSurfer and FSL against manual segmentation. *Neuroimage*. 2016;129:1–14. <https://doi.org/10.1016/j.neuroimage.2016.01.038>.
  58. Schuetze M, Park MTM, Cho IY, MacMaster FP, Chakravarty MM, Bray SL. Morphological alterations in the thalamus, striatum, and pallidum in autism spectrum disorder. *Neuropsychopharmacol Off Publ Am Coll Neuropsychopharmacol*. 2016;41(11):2627–37. <https://doi.org/10.1038/npp.2016.64>.
  59. Seng G-J, Tseng W-L, Chiu Y-N, Tsai W-C, Wu Y-Y, Gau SS-F. Executive functions in youths with autism spectrum disorder and their unaffected siblings. *Psychol Med*. 2021;51(15):2571–80. <https://doi.org/10.1017/S0033291720001075>.
  60. Supekar K, Menon V. Sex differences in structural organization of motor systems and their dissociable links with repetitive/restricted behaviors in children with autism. *Mol Aut*. 2015;6:50. <https://doi.org/10.1186/s13229-015-0042-z>.
  61. Swerdlow NR, Hartston HJ, Hartman PL. Enhanced visual latent inhibition in obsessive-compulsive disorder. *Biol Psychiat*. 1999;45(4):482–8. [https://doi.org/10.1016/s0006-3223\(98\)00050-x](https://doi.org/10.1016/s0006-3223(98)00050-x).
  62. Szeszko PR, Christian C, Macmaster F, Lencz T, Mirza Y, Taormina SP, Easter P, Rose M, Michalopoulos GA, Rosenberg DR. Gray matter structural alterations in psychotropic drug-naïve pediatric obsessive-compulsive disorder: an optimized voxel-based morphometry study. *Am J Psychiatry*. 2008;165(10):1299–307. <https://doi.org/10.1176/appi.ajp.2008.08010033>.
  63. Tang W, Zhu Q, Gong X, Zhu C, Wang Y, Chen S. Cortico-striato-thalamo-cortical circuit abnormalities in obsessive-compulsive disorder: a voxel-based morphometric and fMRI study of the whole brain. *Behav Brain Res*. 2016;313:17–22. <https://doi.org/10.1016/j.bbr.2016.07.004>.
  64. Travers BG, Kana RK, Klinger LG, Klein CL, Klinger MR. Motor learning in individuals with autism spectrum disorder: activation in superior parietal lobule related to learning and repetitive behaviors. *Autism Res: Off J Int Soc Autism Res*. 2015;8(1):38–51. <https://doi.org/10.1002/aur.1403>.
  65. Uljarević M, Baranek G, Vivanti G, Hedley D, Hudry K, Lane A. Heterogeneity of sensory features in autism spectrum disorder: challenges and perspectives for future research. *Autism Res Off J Int Soc Autism Res*. 2017. <https://doi.org/10.1002/aur.1747>.
  66. Weeland CJ, Kasprzak S, de Joode NT, Abe Y, Alonso P, Ameis SH, Anticevic A, Arnold PD, Balachander S, Banaj N, Bargallo N, Batistuzzo MC, Benedetti F, Beucke JC, Bollettini I, Brecke V, Brem S, Cappi C, Cheng Y, Vriend C. The thalamus and its subnuclei—a gateway to obsessive-compulsive disorder. *Transl Psychiatry*. 2022;12(1):70. <https://doi.org/10.1038/s41398-022-01823-2>.
  67. Wilcox JA, Tsuang MT, Schnurr T, Baida-Fragoso N. Case-control family study of lesser variant traits in autism. *Neuropsychobiology*. 2003;47(4):171–7. <https://doi.org/10.1159/000071210>.
  68. Zandt F, Prior M, Kyrios M. Repetitive behaviour in children with high functioning autism and obsessive compulsive disorder. *J Autism Dev Disord*. 2007;37(2):251–9. <https://doi.org/10.1007/s10803-006-0158-2>.
  69. Zeidan J, Fombonne E, Scora J, Ibrahim A, Durkin MS, Saxena S, Yusuf A, Shih A, Elabbagh M. Global prevalence of autism: a systematic review update. *Autism Res*. 2022;15(5):778–90. <https://doi.org/10.1002/aur.2696>.

## Publisher's Note

Springer Nature remains neutral with regard to jurisdictional claims in published maps and institutional affiliations.

Ready to submit your research? Choose BMC and benefit from:

- fast, convenient online submission
- thorough peer review by experienced researchers in your field
- rapid publication on acceptance
- support for research data, including large and complex data types
- gold Open Access which fosters wider collaboration and increased citations
- maximum visibility for your research: over 100M website views per year

At BMC, research is always in progress.

Learn more [biomedcentral.com/submissions](https://biomedcentral.com/submissions)

