



# The impact of adult neurogenesis on affective functions: of mice and men

Mariana Alonso, Anne-Cécile Petit, Pierre-Marie Lledo

## ► To cite this version:

Mariana Alonso, Anne-Cécile Petit, Pierre-Marie Lledo. The impact of adult neurogenesis on affective functions: of mice and men. *Molecular Psychiatry*, In press, 10.1038/s41380-024-02504-w . pasteur-04548523

**HAL Id: pasteur-04548523**

**<https://pasteur.hal.science/pasteur-04548523>**

Submitted on 16 Apr 2024

**HAL** is a multi-disciplinary open access archive for the deposit and dissemination of scientific research documents, whether they are published or not. The documents may come from teaching and research institutions in France or abroad, or from public or private research centers.

L'archive ouverte pluridisciplinaire **HAL**, est destinée au dépôt et à la diffusion de documents scientifiques de niveau recherche, publiés ou non, émanant des établissements d'enseignement et de recherche français ou étrangers, des laboratoires publics ou privés.



Distributed under a Creative Commons Attribution 4.0 International License

## EXPERT REVIEW

## OPEN



# The impact of adult neurogenesis on affective functions: of mice and men

Mariana Alonso<sup>1</sup>, Anne-Cécile Petit<sup>1,2</sup> and Pierre-Marie Lledo<sup>1</sup>✉

© The Author(s) 2024

In most mammals, new neurons are not only produced during embryogenesis but also after birth. Soon after adult neurogenesis was discovered, the influence of recruiting new neurons on cognitive functions, especially on memory, was documented. Likewise, the late process of neuronal production also contributes to affective functions, but this outcome was recognized with more difficulty. This review covers hopes and hopes of discovering the influence of newly-generated neurons on brain circuits devoted to affective functions. If the possibility of integrating new neurons into the adult brain is a commonly accepted faculty in the realm of mammals, the reluctance is strong when it comes to translating this concept to humans. Compiling data suggest now that new neurons are derived not only from stem cells, but also from a population of neuroblasts displaying a protracted maturation and ready to be engaged in adult brain circuits, under specific signals. Here, we discuss the significance of recruiting new neurons in the adult brain circuits, specifically in the context of affective outcomes. We also discuss the fact that adult neurogenesis could be the ultimate cellular process that integrates elements from both the internal and external environment to adjust brain functions. While we must be critical and beware of the unreal promises that Science could generate sometimes, it is important to continue exploring the potential of neural recruitment in adult primates. Reporting adult neurogenesis in humankind contributes to a new vision of humans as mammals whose brain continues to develop throughout life. This peculiar faculty could one day become the target of treatment for mental health, cognitive disorders, and elderly-associated diseases. The vision of an adult brain which never stops integrating new neurons is a real game changer for designing new therapeutic interventions to treat mental disorders associated with substantial morbidity, mortality, and social costs.

*Molecular Psychiatry*; <https://doi.org/10.1038/s41380-024-02504-w>

## INTRODUCTION

The discovery that new neurons could be continually generated in the adult mammalian brain has broken a central dogma in Neuroscience and has generated enormous debates among theoreticians, evolutionists, neurobiologists, and clinicians, to name just a few of them [1]. Even though the functional impact of this postnatal neuronal production might vary consistently with species, the ability to continue producing neurons after birth seems to be conserved across evolutionary boundaries, from crustaceans to primates, including humans [2, 3]. However, the degree of this enduring neurogenesis varies according to animal species, a feature that might result from a trade-off between the benefits accrued from recruiting more neurons in a given brain circuit and the disadvantage they generate when integrating an already functioning circuit.

The first observation supporting the existence of adult mammalian neurogenesis came in 1962 when J. Altman discovered it in the cerebral cortex before he made a similar observation in the hippocampus [4]. However, the field of adult neurogenesis has been tugged throughout history by a conceptual resistance (i.e., how long-lasting memory traces could be maintained if the lifespan of neurons is short?) and the lack of appropriate tools to support this provocative concept (i.e.,

observations of cell divisions in the adult brain was seen initially as proof of gliogenesis rather than neurogenesis). Consequently, it was only in the 1980's that adult neurogenesis was validated in adult rats by Bayer and colleagues [5, 6]. Together with the studies of Goldman and Nottebohm [7] that extended the same observations in adult brain birds, the scientific community started to renew interest in a phenomenon already known twenty years earlier. Since then, these initial observations have been expanded over time to most mammals including humans when Eriksson and colleagues, in ref. [8], were able to obtain postmortem brain tissue from patients who had been treated with BrdU (5-bromo-3'-deoxyuridine, a thymidine analogue that labels DNA) as a diagnostic biomarker. For the first time, they reported compelling evidence of BrdU labeling in neurons (i.e. NeuN+ cells) in the human dentate gyrus [8]. We know now that two brain regions—the olfactory bulb and the hippocampus—incorporate new neurons throughout life in most mammalian species [9]. In these regions, the cell-level renovation is not static or merely restorative, but it constitutes an adaptive response to challenges imposed by an animal's environment and/or internal states. A huge amount of work has been performed to understand the cellular and molecular mechanisms controlling adult neurogenesis particularly in the rodent brain (for reviews see refs. [10, 11]). More recent

<sup>1</sup>Institut Pasteur, Université Paris Cité, CNRS UMR 3571, Perception and Action Unit, F-75015 Paris, France. <sup>2</sup>Pôle Hospitalo-Universitaire Psychiatrie Paris 15, GHU Paris Psychiatrie and Neurosciences, Hôpital Sainte-Anne, Paris, France. ✉email: [pmllledo@pasteur.fr](mailto:pmllledo@pasteur.fr)

Received: 7 August 2023 Revised: 22 February 2024 Accepted: 27 February 2024

Published online: 18 March 2024

studies have reported the presence of a constitutive adult neurogenesis in other brain regions including the striatum, amygdala, olfactory cortex [12], and the hypothalamus [13] (see Box 1). We focus the present review on the numerous evidence supporting adult-neurogenic potential of the mammalian brain and the links associating this process with psychiatric disorders.

### ADULT NEUROGENESIS IN MAMMALS

Although systematic studies of hippocampal adult neurogenesis across the whole mammalian phylogenetic scale have not been conducted so far, it is noteworthy that several studies described variations in the degree of adult neurogenesis between species. It is clear today that the maturation rate of new neurons differs across species (Fig. 1). For instance, Kohler and colleagues demonstrate important variations in the maturation rate between the monkeys and rodents [14]. The authors report a slower neural maturation rate in nonhuman primates than in rodents. This property has far-reaching consequences since only the maturing neurons carry unique features by displaying higher excitability and stronger synaptic plasticity [15]. In other words, because the

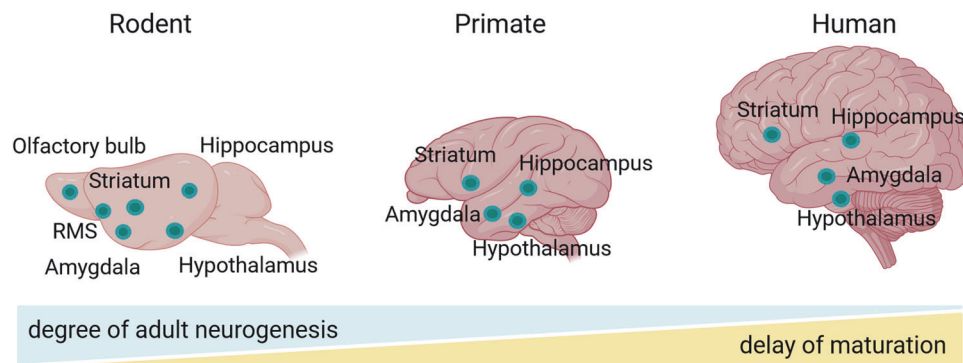
temporal window, in which new neurons are particularly functional, is longer in nonhuman primates than in other species, the functional impact of hippocampal neurogenesis in primates has been so far undervalued. Kohler and colleagues concluded that this protracted period of neuronal maturation confers an important evolutionary advantage by permitting increased cognitive flexibility and discrimination in primates. Below, we review evidence supporting the existence of adult hippocampal neurogenesis in primates.

In the 1980's, mounting evidence from rodents have quickly convinced the community that the adult brain could integrate new neurons. However, to which extent these findings apply to primates remains controversial. As a consequence, the transfer of results obtained from animal studies to the primates was slowed down. In 1985, using the  $^3\text{H}$ -thymidine labeling approach, Rakic initially reported a lack of adult neurogenesis in non-human primate brains [16] and so the general interest of such studies vanished. However, the possibility of using a non-radioactive cell division marker, BrdU, has provided a new momentum to the field. Combining BrdU with immunohistochemistry became so easy to be used that a new enthusiasm was reborn revealing persistent neurogenesis in adult marmosets [17] and macaques [18–21], though the degree of neurogenesis was found to be 10 times lower than in rodents. More recently, this striking difference in the degree of adult neurogenesis was interpreted as a consequence of a key developmental process. Sorrells and colleagues [22] demonstrated that in monkey, the proliferation of hippocampal neurons sharply decreases during juvenile development while postnatal neurogenesis in rodents remains stable. Thus, adult neurogenesis in the primate hippocampus is considered less robust after the juvenile stage compared to that in rodents and other mammals, because neuronal progenitors exhibit both longer cycles of turnover and slower maturation rates (Fig. 1). This particular kinetic led the authors to conclude that recruitment of young neurons to the primate hippocampus is reminiscent of a long-lasting developmental process that starts during embryogenesis and ends at early stages after birth.

The lack of consensus on adult neurogenesis in non-human primates has had tremendous consequences for neuroscientists since it was considered as a prerequisite to validate its presence in humans. In other words, absence of proof of adult neurogenesis in primates was considered from an evolutive point of view, to be inconsistent with the formation of new neurons in humans. The advent of new technologies, such as single-cell RNA sequencing (RNA-seq), has provided new insights to counteract this objection. Using RNA-seq analysis to reveal molecular diversity and cellular heterogeneity in hippocampus, across the lifespan of macaques, adult neurogenesis was unambiguously characterized [23], making estimable again its study.

#### Box 1. Adult neurogenesis comes in the plural

In rodents, adult neurogenesis has been extensively studied using the subventricular zone (SVZ) -olfactory bulb system. There, astrocytes located in the adult SVZ act as slow-dividing neural stem cells capable of generating a progeny of neuroblast precursors. These neuroblasts proceed towards the olfactory bulb along the rostral migratory stream. Once in the bulb, new cells mature principally into local inhibitory neurons, but few of them give rise to excitatory neurons [180]. The subgranular zone (SGZ) of the hippocampus is another neurogenic niche in the adult brain. It lines the hilar side of the granule cell layer of the dentate gyrus. There, astrocytes give rise to intermediate progenitors, producing about 9,000 new neurons per day in young adult rats [181]. These progenitors mature locally into granule neurons in the dentate gyrus, sending axonal projections into the CA3 and CA2 regions and dendritic arbors into the molecular layer [9]. Some evidence also suggests the presence of constitutive neurogenesis in other brain regions, including the hypothalamus where neurogenesis has the potential to affect metabolism, fat storage and sexual functions [182]. In contrast, the function of adult neurogenesis reported in the striatum, amygdala, substantia nigra, and cortex remain still unclear [183]. Searching for the source of new neurons in the adult brain, some evidence indicates that newly-generated neurons in the striatum or amygdala are derived from the SVZ, while in the hypothalamus, the proliferation of progenitor cells occurs in the ependymal cells lining the third ventricle. The degree of adult neurogenesis depends particularly on environmental exposures, as reported in the hippocampus, the olfactory bulb circuit [184], and in other brain regions [183]. The poor breeding and housing conditions commonly used in laboratories could be responsible for the low level of adult neurogenesis usually seen in captive animals. Raising animals in more natural environments in combination with next-generation sequencing technologies, are required to fully appreciate the precise level of adult neurogenesis and its functional impact.



**Fig. 1 Schematic illustration of the degree of adult neurogenesis and the delay of maturation of new neurons from rodents to humans' brains.** The circles refer to the presence of immature neurons (or de novo production) in the adult brain. The two gradients displayed at the bottom represent the mean strength of each parameter. RMS rostral migratory stream. Created with BioRender.com.

## ADULT NEUROGENESIS IN HUMANS: NEW EVIDENCE ON AN OLD DEBATE

The first observations of new neurons generated in the adult human brain were reported in the late 1990s [8] when it became possible to apply a panel of cell division markers on postmortem brain tissue and visualize the results using confocal microscopy (Table 1; see also [3]).

Since then, the idea of a neuronal formation was extended to the presence of proliferative stem cells in the SVZ [24, 25] even though various techniques failed detecting the presence of new neurons in the olfactory bulb [24, 26, 27]. Consistent with these results the existence of an actual rostral migratory stream in the adult human brain has not been established, or only a few rare dividing cells were found ([27] but see also [28, 29]). The age of the subject seems to matter since the presence of a migratory stream containing dynamic neuroblasts has been observed in children where they integrate the olfactory bulb and the prefrontal cortex, but not during adulthood [30].

Similar controversy occurred on human hippocampal neurogenesis. Although previous studies rule out the presence of new neurons in the hippocampus, using the  $^{14}\text{C}$  birth dating approach it was reported that humans exhibit similar degree of adult neurogenesis as compared to rodents [31, 32], with a poor decline during aging. Remarkably, this technique has also created a new interest to link neurological diseases with changes in the degree of adult neurogenesis in the case of Alzheimer disease [33], epilepsy [34] and Lewy bodies/Parkinson disease dementia patients [35] (see Table 1; and [3]). Likewise, hippocampal neurogenesis concerns mental health as describe in Table 1. Adult neurogenesis was reported in the striatum but tremendously altered in patients with Huntington's disease [36, 37]. Importantly, adult-neurogenesis in non-canonical regions (see Box 1), including amygdala [38–40], hypothalamus [41] and temporal cortex [40] was also reported in the human brain.

Despite this new evidence, further inconsistencies still remain in the field. By analyzing proliferation markers typical of young neurons, some studies have ascertained that the degree of postnatal neurogenesis in the dentate gyrus drops sharply in childhood to become absent in adults ([22, 42] but see also [43]). Contrary, Boldrini et al. conclude that human hippocampal neurogenesis persists through life [44]. All these studies were conducted mostly using similar tools based on the detection of the two markers of neuroblasts and immatures neurons, respectively DCX and PSA-NCAM proteins. However, identifying the degree of adult neurogenesis using immunostaining presents numerous technical caveats when performed on postmortem material of human, which might have contributed to the discrepancies [45–47]. Furthermore, the time elapsed between the expression of DCX and PSA-NCAM may vary between species according to the neuronal maturation rate. For instance, Terreros-Roncal et al. [48] demonstrated that PSA-NCAM expression slightly precedes that of DCX in humans. So, the mere expression of cell markers associated with maturing new neurons may be temporally decoupled, explaining why some investigations failed to report co-staining. Finally, the health history of the patients as well as the cause of death, extremely variable between studies (see Table 1), alter the degree of adult neurogenesis.

To clarify some of these issues, Moreno-Jimenez and colleagues have performed a new series of experiments and identified thousands of immature neurons in the hippocampus of healthy subjects, with various ages up to 90 years [49]. The same group then used a combination of antibodies to characterize the development of new neurons to report disrupted hippocampal neurogenesis in patients with Huntington's disease, fronto-temporal dementia, Parkinson's disease and amyotrophic lateral sclerosis [48]. These recent studies [44, 48, 50] included the analysis of numerous markers (DCX, PSA-NCAM, Calretinin, Calbindin, Tau, NeuN, Sox2, MAP2, Nestin, Vimentin, S100Beta,

HuC, Prox1, etc). This array of proteins and transcription factors include not only markers of immature neurons but also of neural stem cells, progenitors and proliferative cells. Precisely, the same markers that have been used to demonstrate the occurrence of adult neurogenesis in the remaining mammalian species. Although the use of these markers presents several drawbacks, including the fact that commonly used antibodies do not always work on human tissue. Moreover, the group of Llorens-Martin reveals that post-mortem delay, fixation process and antigen retrieval protocols strongly affect the detectability of adult-neurogenesis markers which require a strictly controlled methodology to reconstruct the entire process [3, 51]. The analysis of multiple markers, or of the whole genome, taking consideration of species differences are required to solve the ongoing debate. Whilst this controversy is not yet over [45, 52–54], it is more than likely that the human adult brain remains capable of producing new neurons throughout life.

Given the aforementioned limitations of working with post-mortem human samples, the next-generation sequencing technologies emerge with promising potential for alternative evaluation of adult neurogenesis. Single-cell/single-nucleus RNA sequencing (sc/sn-RNA-seq) can be applied for evaluation of the expression profile, cellular diversity, and heterogeneity of tissues at single-cell resolution. Thus, it is useful to characterize various cell types, from stem cells to fully mature neurons [55]. For instance, Zhou and colleagues [56] used sn-RNA-seq in combination with machine learning-based analytic approach to identify immature neurons and quantify their abundance in the human hippocampus. They report the presence of a substantial number of immature neurons in the adult human hippocampus via low frequency de novo generation and prolonged maturation, indicating a major difference compared to other mammalian species (Fig. 1). In the same line, a recent study provides better understanding of hippocampal adult neurogenesis in monkeys and humans by revealing novel markers for distinct cell types [23]. Finally, Franjic and colleagues performed sn-RNA-seq on cells from five subregions of the entorhinal-hippocampal complex from six human donors, as well as on samples from rhesus macaques and pigs [57]. They compared their data with published single-cell sequencing data from mice and observed a homologous trajectory from progenitors to granule cells in pigs and macaques, but not in humans. They found DCX expressed in both mature and immature granule cells, thus demonstrating this marker might not be used as a proxy for adult neurogenesis. In fact, most controversies in the field came from the validation of neurogenesis by means of immunostaining using rodent-derived marker genes. Since immunostaining studies present a significant challenge given the substantial differences between species, next-generation sequencing technologies have offered to the field a revival.

In sum, mounting anatomical, biochemical, and genomic evidence supports the presence of immature neurons in the hippocampus of healthy subjects throughout life. This observation is in sharp contrast with the olfactory bulb where adult neurogenesis seems to be absent, although a new examination taking advantage of more sensitive tools is still missing. How to understand the divergent patterns of adult neurogenesis, different maturation rates, in distinct regions of the mammalian brain from an evolutionary point of view? The well-documented decrease in olfactory abilities that has taken place during the course of evolution, associated with a decrease in the olfactory bulb volume across phylogenetic groups could have been important factors contributing to the extinction of the adult neurogenesis in the primate olfactory bulb [58]. In contrast, the striatum has enlarged in parallel with the cerebral cortex throughout evolution and it is particularly well-developed in higher mammals, including humans. The enlargement of the striatum implies a heavier reliance on movement coordination, cognition, and emotions, possibly requiring a new form of plasticity provided by adult neurogenesis. Raising this possibility is relevant to the "Baldwin

**Table 1.** Principal studies on postnatal neurogenesis in humans.

	Study	Technique	Region	Health status & treatments	Cause of death	Proliferation in adult brain	Immature progenitors in adult brain
No neurological or psychiatric diseases	Eriksson et al. [8]	IHC (BrdU)	HIP	carcinomas tongue, larynx or pharynx No anti-cancer therapy	ns	<sup>a</sup> evidence of proliferation (BrdU+ cells)	
	Sanai et al. [24]	IHC (TuJ1, PSA-NCAM) Neurosphere assay EM	SVZ	tumor, CV, epilepsy Non neurological disease	non-neurological	<sup>a</sup> evidence of SVZ astrocytes proliferation in vivo & in vitro no evidence of RMS	<sup>a</sup> presence of immature progenitors
	Quinones-Hinojosa et al. [25]	IHC (PCNA, Ki67, GFAP)/EM	SVZ-RMS	IO, epilepsy, trauma, glioma, arteriovenous malformation PM no brain pathology	ns	no evidence of RMS	
	Curtis et al. [28]	IHC (PCNA, PSA-NCAM, BrdU), Tunnel+ cells /WB/ EM	RMS-OB	carcinomas tongue, larynx, or pharynx	ns		<sup>a</sup> presence of immature progenitors in RMS reaching the OB
	Kam et al. [29]	IHC (PCNA, PSA-NCAM, GFAP, CDT33)/EM	SVZ-RMS	non neurological disease	CV, asphyxiation, pulmonal ruptured aneurysm		<sup>a</sup> presence of immature progenitors in RMS reaching the OB
	Sanai et al. [30]	IHC (DCX, PSA-NCAM, GFAP)/EM	SVZ-RMS	non neurological disease but several pathologies vascular malformation, epilepsy, brain tumor, CV, stroke	ns	decline in neurogenesis in early childhood	
	Wang et al. [27]	IHC (DCX, PSA-NCAM, GFAP, $\beta$ -III tubulin, Ki67, MCM2)	SVZ-RMS-OB	no neuropathology	ns	<sup>a</sup> evidence of proliferation in SVZ	<sup>a</sup> immature progenitors in SVZ and RMS no neuroblast in the OB
	Bregmann et al. [26]	<sup>14</sup> C in genomic DNA/ IHC (Sox2, HuD)	OB	ns	ns	No evidence of proliferation	
	Marti-Mengual et al. [38]	IHC (DCX, PSA-NCAM, Ki67)	AMY	ctrol, MDD, BD and schizophrenic patients	suicide or ns		<sup>a</sup> presence of immature progenitors
	Spalding et al. [32]	<sup>14</sup> C in genomic DNA	HIP	ns	ns	<sup>a</sup> evidence of proliferation in adults at constant rate	
	Batailler et al. [41]	IHC (DCX, PSA-NCAM, HuC/D)	Hypothalamus	ns	ns		<sup>a</sup> presence of immature progenitors
	Dennis et al. [42]	IHC (Ki67, DCX, PCNA)	LV - HIP- CN	no neurological disease	drowning, Trauma, RF, CV	decline in neurogenesis in early childhood	
	Mathews et al. [43]	mRNA levels (DCX, GFAP, Ki67)/IHC	HIP	no neurological disease	RF, CV	<sup>a</sup> progressive decreases in proliferation with age (mRNA Ki67)	<sup>a</sup> progressive decreases of immature progenitors with age (mRNA DCX)
	Sorrells et al. [39]	IHC (DCX, PSA-NCAM, Sox2)	AMY	ctrl & ASD	cancer, CV, infection lung disease	no evidence of proliferation in adults	<sup>a</sup> Immature progenitors in PL nuclei persist into old ages

Table 1. continued

Study	Technique	Region	Health status & treatments	Cause of death	Proliferation in adult brain	Immature progenitors in adult brain
Boldrini et al. [44]	IHC (Sox2, nestin, DCX, PSA-NCAM, Ki67)	HIP	no neurological or psychiatric diagnoses	ns		<sup>a</sup> presence of immature progenitors
Franjic et al. [57]	snRNA-seq /IHC	HIP	no neurological disease	atherosclerotic CV, RNF	no immature progenitors detected in adult	
Wang et al. [23]	snRNA-seq/IHC	HIP	cancer, coma, arteriosclerosis patients	cancer, FR, OF, cancer, infection	<sup>a</sup> evidence of proliferation in adults	<sup>a</sup> presence of immature progenitors
Li et al. [40]	IHC (DCX) /WB	TCx -AMY	ctrl	cancers, malformation, CV, infection, MSF, accident		<sup>a</sup> presence of immature progenitors
Curtis et al. [37]	IHC (PCNA)/WB	SEL-CN	ctrl & HD patients	ns	<sup>a</sup> evidence of increased progenitor cell proliferation in the SEL of the HD	<sup>a</sup> presence of immature progenitors
Boekhoorn et al. [33]	IHC (Ki-67, GFAP, DCX)	HIP	AD patients	cancer, CV, cachexia, RF, VD		<sup>a</sup> presence of immature progenitors No alteration in AD patients
Liu et al. [34]	IHC (DCX, PSA-NCAM-TuJ1, reelin)/WB	HIP - TCx	ctrl & epileptic patients	ctrl: CV, asphyxia,	<sup>a</sup> evidence of proliferation in the normal and epileptic Hipp	<sup>a</sup> presence of immature progenitors in the temporal Cx
Ernst et al. [36]	<sup>14</sup> C in genomic DNA/ IHC (DCX, PSA-NCAM, idU)/WB	Str	cancer patients (IHC) HD patients	ns	<sup>a</sup> evidence of proliferation Decrease in HD patients	<sup>a</sup> presence of immature progenitors
Sorrells et al. [22]	IHC (DCX, PSA-NCAM, Sox2) /EM	HIP	ctrl & epileptic patients	trauma, cancer, CV, RF, intraventricular hemorrhage	decline in neurogenesis in early childhood	
Gatt et al. [35]	IHC (DCX)	HIP	ctrl & Lewy bodies/ Parkinson disease dementia patients untreated, SSRI & AChEI-treated	ns		<sup>a</sup> increase immature progenitors in SSRI-treated patients vs Ctrl & untreated patients
Moreno-Jimenez et al. [49]	IHC (DCX, PSA-NCAM, NeuN, Tuj1)	HIP	ctrl & AD patients	Ctrl: cancer, stroke, sepsis, CV, Leukemia, peritonitis		<sup>a</sup> persistent adult neurogenesis drops sharply in AD patients
Terreros-Roncal et al. [48]	IHC (DCX, HuC/ HuD, PH3 +, Vimentin, PSA-NCAM, Sox2, S100B, Iba1, Nestin)	HIP	ctrl & ALS, HD, $\alpha$ -synucleinopathies, frontal dementia, AD patients	cancer, leukemia, respiratory infection, stroke, RF, peritonitis, CV	<sup>a</sup> changes in proliferation ratio in neurodegenerative diseases	<sup>a</sup> Abnormal adult-born neurons morphological development in neurodegenerative diseases



Table 1. continued

Study	Technique	Region	Health status & treatments	Cause of death	Proliferation in adult brain	Immature progenitors in adult brain
Zhou a et al [56]	snRNA-seq/ machine learning- based analysis	HIP	ctrl & AD patients	ns	rare proliferating neural progenitors	<sup>a</sup> Presence of immature progenitors with altered gene expression in AD patients
Mood disorders						
Boldirini et al. [130]	IHC (Nestin, Ki67, NeuN, GFAP)	HIP	MDD patients, MDD-treated with antidepressant, Ctrl	MDD = suicide & OD ctrl = vehicle accident/CV/ peritonitis	<sup>a</sup> evidence of proliferation (increased by antidepressants)	<sup>a</sup> antidepressants increase immature progenitors
Reif et al. [190]	IHC (Ki67)	HIP	MDD, BD, schizophrenic patients Ctrl (antidepressant, neuroleptic, psychotropic drug)	ns	<sup>a</sup> evidence of proliferation (reduce in schizophrenic patients but not in depression)	
Lucassen et al. [191]	IHC (MCM2, PH3)	HIP	MDD and bipolar depression patients, treated with antidepressant Ctrl/ non neuropathological alterations	suicide (MDD), CV, cachexia, RF, etc	<sup>a</sup> reduced number of MCM2 + /PH3+ cells in MDD patients	
Boldirini et al. [131]	IHC (Nestin, Ki67)	HIP	MDD untreated, MMD*SSRI & MMD*TCA treated Ctrl: no psychotropic drugs prescription and negative toxicology and psychiatric history	ctrl: CV, peritonitis, MVA MDD: Suicide, OD, RF		<sup>a</sup> increase immature progenitors in MDD*SSRI treated patients
Epp et al. [132]	IHC (DCX, p21, NeuN)	HIP	MDD w or w/o psychosis	ns		<sup>a</sup> increase immature progenitors in MDD patients (depends on antipsychotics or psychotic symptoms)
Other psychiatric conditions						
Bayer et al. [192]	IHC (Musashi, Nestin, Ki67, CR, GFAP, NeuN, TuJ1, DCX)	HIP	heroin addicts no obvious pathologic or traumatic brain disorder	ctrl: CV, Polytrauma, pulmonary Addict: Heroin intoxication		<sup>a</sup> decrease of immature progenitors in drug addicts
Allen et al. [193]	IHC (Ki67, NeuN)	HIP	schizophrenic patients	ns	<sup>a</sup> reduced proliferation in schizophrenic patients	
Le Maitre et al. [194]	IHC (Ki67, Sox2, DCX)	HIP	ctrl and alcohol abusers	ctrl : CV, Suicide, accident alcohol abuser, suicide, CV, intoxication	<sup>a</sup> reduce proliferation in alcohol abusers	<sup>a</sup> reduce immature progenitors in alcohol abusers

PM post-mortem, IO intra-operation, HIP Hippocampus, SVZ subventricular zone, RMS rostral migratory stream, OB olfactory bulb, Str Striatum, AMY amygdala, SEL subependymal layer, CN caudate nucleus, LV lateral ventricle, TCx temporal cortex, IHC immunohistochemistry, WB western blot, EM electronic microscopy, CV cardiovascular, MSF multi-system failure, RF respiratory failure, RNF renal failure, VD vascular disease, OD overdose, MVA motor vehicle accident, ns none specified, ctrl control, HD Huntington disease, AD Alzheimer disease, MDD Major depressive disorder, BD Bipolar disorder, ASD autistic spectrum disorder, ALS Amyotrophic lateral sclerosis, SSRI selective serotonin reuptake inhibitors, AChE acetyl-cholinesterase inhibitors, TCA tricyclic antidepressants.

<sup>a</sup>Indicates the studies showing positive evidence for the presence of persistent adult-neurogenesis (including both immature cells and progenitor proliferation).

effect" in which a culturally invented trait is transformed into an instinctive trait by the means of natural selection repeated throughout generations to increase individual fitness [59]. Debating on the functional relevance of adult neurogenesis seems to be far from over since some studies dismiss it as an evolutionary remnant, given its too low rates, especially in highly cognitively developed species [53].

### FUNCTIONAL IMPACTS OF ADULT NEUROGENESIS ON HIPPOCAMPAL CIRCUITS

Like many brain regions of the limbic system, the hippocampus is involved in memory, learning, and emotion, in both animals models and humans [60, 61]. It therefore comes as no surprise that increasing the production of new neurons in the hippocampus enhances various cognitive functions, including learning and memory [62], object recognition [63], cognitive representations [64] and forgetting [65] (for review see ref. [66]). Moreover, hippocampal neurogenesis has also been implicated in mood regulation (reviewed in ref. [67]). For instance, studies have shown that reduced neurogenesis in the hippocampus is associated with depression-like behaviors [68], while increasing neurogenesis produces an antidepressant effect. Due to space constraint, this review focuses only on the relationship between adult-neurogenesis and affective disorders (see Box 2).

Overall, adult neurogenesis appears to be related both with cognitive and affective functions by plugging new neurons with unique functions into host mature circuits. Therefore, hippocampal circuitry is constantly remodeled by integrating maturing neurons, thereby altering the function of existing networks. Number of studies have revealed the functional uniqueness of this extreme form of cellular plasticity. Maturing adult-born granule cells receive first inhibitory inputs from local GABAergic interneurons and then form transient synapses onto pre-existing neighbor granule cells [69]. Once mature, the adult-formed granule cells enter into synaptic competition with the pre-existing ones, a competition that concerns both synaptic inputs from the entorhinal cortex and synaptic outputs to the CA3 and CA1 targeted regions [70, 71]. Because the newly-formed neurons are hyperexcitable, adult neurogenesis can lead to the formation of new and plastic synaptic connections, a feature that boosts cognitive functions such as pattern separation (the process by which overlapping or similar inputs are transformed into less similar outputs) and pattern completion (the reconstruction of complete stored representations from partial inputs) [72]. Adult-generated granule cells form connections with hippocampal interneurons that strongly inhibit neighboring pre-existing granule cells through a process called lateral inhibition. When new granule cells impinge onto interneurons located distantly in CA3 or CA1 regions, they provide feedforward inhibition [73]. Therefore, adding granule cells by the means of adult neurogenesis does not imply an overall excitation, on the contrary. Because new neurons provide both lateral and feedforward inhibition, adult neurogenesis contributes to the overall sparsification of population firing across the hippocampus [74]. Finally, in addition to the

local action within the hippocampus, new neurons could be preferentially targeted by afferents originating from many brain regions. In that case, adult-born neurons appear as powerful hub capable of relaying the action of afferent pathways into the hippocampus [75].

### BODY-BRAIN INTERACTIONS, ADULT NEUROGENESIS, AND AFFECTIVE STATES

As it is often the case in living organisms, important functions are subjected to multiple controls exerted by numerous regulators. Adult neurogenesis is no exception to that rule since it is regulated by a panel of endogenous brain-derived factors such as neurotransmitters and trophic factors. Moreover, several exogenous factors to the brain also influence adult neurogenesis (Fig. 2). The first factor to be studied extensively was the effect of stress and glucocorticoids on hippocampal neurogenesis and affective states [76]. Number of studies reported that repeated stress situations (social defeat, exposure to predator odor, restraint, pain conditioning, unpredictable chronic moderate stress), sleep deprivation and viral infection reduces hippocampal neurogenesis in rodents while caloric restriction, antidepressants or physical exercise increase it [77, 78].

More recently, the trillions of microorganisms which reside in our gastrointestinal tract have been also reported to profoundly influence adult neurogenesis. This has shed new light on the processes linking environmental factors, stress, adult neurogenesis, and affective states. Because the composition of the gut microbiome is influenced by several lifestyle factors such as birth mode (vaginal vs. cesarean section), diet composition, physical exercise, stress or aging [79], it is not clear whether lifestyle factors act directly on the process of hippocampal neurogenesis, or indirectly by changing the microbiome-derived neurogenic factors (Fig. 3), or both. In any case, mounting evidence through germ-free (GF) rodents [80], microbiota transplant studies [81, 82], and microbiota-targeted interventions such as those mediated by dietary supplementation or antibiotics treatment [83, 84] highlight the importance of the gut microbiota composition for adult hippocampal neurogenesis (reviewed in [85]). For instance, the mere transfer of the microbiota from stressed mice to naive mice is sufficient to transfer the hallmarks of depression, including decreased hippocampal neurogenesis, altered serum metabolite levels, and expression of despair-like behaviors [86, 87].

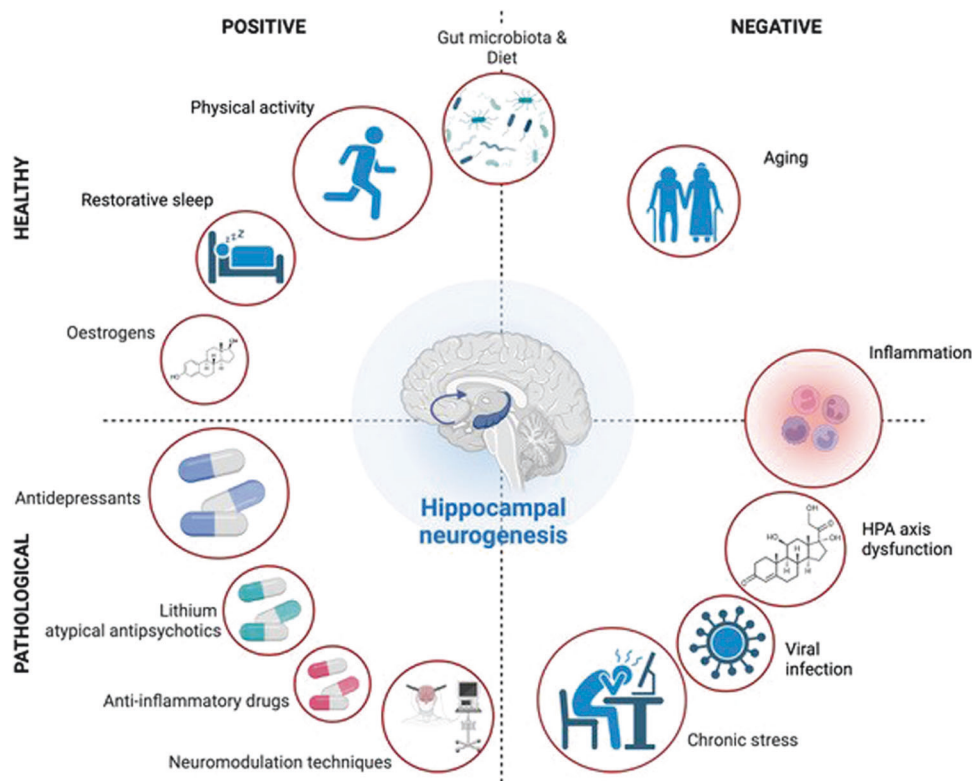
Patients suffering from MDD have been found to harbor unique signatures in their gut microbiomes. Both microbial diversity and microbial richness are significantly decreased (a process called dysbiosis) in depressed patients, and when this atypical microbiota signature is transferred to healthy, naive rats, the recipient rodents showed anxiety-like and anhedonia behaviors [88]. To achieve these effects, the gut microbiota requires either the bloodstream [86, 87] or a neural route through the vagus nerve [89] (Fig. 3). Remarkably, even the efficacy of an antidepressant such as fluoxetine, is sensitive to changes in gut microbiota composition. For instance, stress-induced changes in gut microbiota dampen fluoxetine efficacy via depletion of brain serotonin [87]. Hence, the anti-neurogenic microbiome exerts its inhibitory effect by switching tryptophan catabolism from serotonin synthesis to the kynurenine production.

Despite all the recently acquired knowledge, further investigations are needed to better understand how the gut microbiome could mechanistically impact the hippocampal neurogenesis before considering a potential microbiota-based treatment for affective disorders. Today, the clinical outcomes about the ability of the gut microbiota to boost human adult hippocampal neurogenesis are rather limited. The identification of clinical biomarkers of microbiota dysfunction associated with affective disorders is a key step to consider novel therapeutic options to treat mental disorders.

#### Box 2. What do we mean by affective disorders?

First coined by the French philosopher René Descartes (1596-1650), the term "affect" refers to the subjective experience of emotion or feeling. Its derivative "affective disorders" became rather ambiguous in the psychiatric field when it refers to disturbances of the emotional state seen across several pathologies. In its most common definition, affective disorders are superimposed on mood disorders (including major depressive disorder (MDD) and bipolar disorder (BD)). On the other hand, in a broader acceptance not retained here, affective disorders include mood disorders and anxiety disorders (generalized anxiety disorder, panic disorder, phobias), trauma and stress-related disorders (post-traumatic stress disorder, acute stress disorder) and obsessive-compulsive disorders.





**Fig. 2 Factors potentially influencing hippocampal neurogenesis in healthy and pathological conditions.** Numerous internal and external factors have been identified as potential regulators of hippocampal neurogenesis, either positively by stimulating neurogenesis (left side) or negatively by inhibiting it (right side). These factors may be present either in healthy conditions (upper part) or in pathological conditions (lower part). Created with BioRender.com.

### INFLAMMATION: THE MISSING LINK BETWEEN ENVIRONMENT AND ADULT NEUROGENESIS?

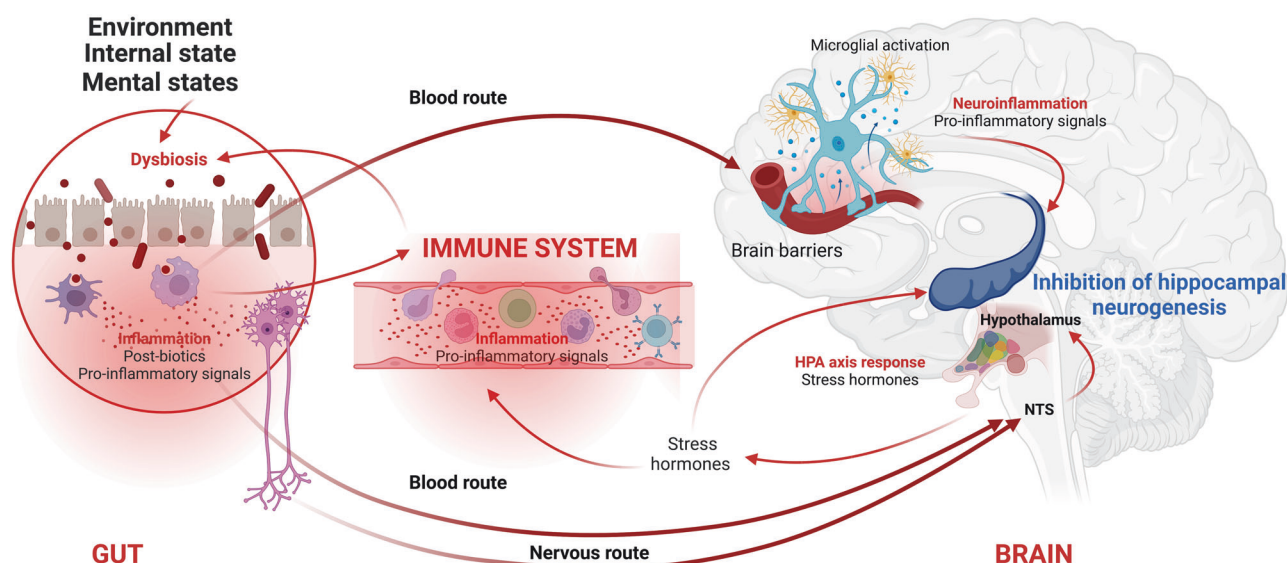
One of the main candidates that strongly connects microbiota dysbiosis to the degree of adult neurogenesis are immune factors driving neuroinflammation (Fig. 3). We define here neuroinflammation as a set of cerebral nonspecific immune responses triggered by various disturbances to the homeostatic state of the organism. These responses are mainly coordinated by innate or adaptive immune factors that particularly target the nervous system. Under physiological conditions, brain immunocompetent cells such as microglia, or their derivate molecular signaling, can boost hippocampal neurogenesis [90]. In contrast, other immune challenges can reduce adult neurogenesis and induce depressive-like “sickness behavior” in both animals and humans [91]. For instance, mounting evidence shows that LPS (lipopolysaccharides), which elicits depressive-like behaviors as well as neuroinflammation, attenuates adult hippocampal neurogenesis in rodents [92] together with a decrease in (Brain-derived neurotrophic factor) expression [93]. Chronic LPS reduces the dendritic length and postsynaptic cluster density of immature newborn granule cells in the hippocampus in mice [94]. These changes are also observed after IFN- $\alpha$  injection, which alters hippocampal cell proliferation, survival, and neuronal differentiation in both rats and mice (reviewed in ref. [95]).

In line with this, previous reports have described the existence of a strong association between depression and peripheral markers of inflammation, in both blood and cerebrospinal fluid [96]. These results were confirmed by more recent cumulative meta-analysis showing interleukin-6 and C-reactive protein (CRP) to be most strongly associated factors with depression [97]. These analyses also show that a significant number of cytokines (including IL1 $\alpha$ , IL1 $\beta$ , TNF $\alpha$ , IL2, IL12, IL18) and receptors (sIL-1RA, sIL-6R) are abnormally high in patients suffering from

depression [98] and that these disturbances are present in the acute and stability phases, in MDD and BD [99].

Pro-inflammatory cytokines are known to influence serotonin metabolism by promoting the functioning of the indoleamine 2,3-dioxygenase (IDO), thus diverting tryptophan metabolism towards the kynurenine pathway instead of the serotonin synthesis pathway. Activation of kynurenine pathway leads to the production of quinolinic acid which is an agonist of glutamatergic NMDA receptor. Thus the switch to kynurenine pathway may lead to excitotoxicity and HPA axis dysregulation, two conditions that alter hippocampal neurogenesis (reviewed in ref. [95]). Not surprisingly, the kynurenine/tryptophan ratio (an indicator of the activation of the first step of the kynurenine pathway) is increased in the plasma and CSF of patients having received IFN- $\alpha$  and correlated with depressive symptoms [100, 101]. An imbalance in favor of the kynurenine pathway associated with a decrease in serotonin, is also correlated with depression scores in patients with mastocytosis [102]. Thus, the initial serotonergic hypothesis of depression (reviewed in ref. [103]) is consistent with an involvement of serotonin-kynurenine-inflammatory pathway, and supports the more general concept of “inflammatory hypothesis” in the pathophysiology of depression [104]. Indeed, adult hippocampal neurogenesis might be one of the most important processes that bridges neuroinflammation to affective disorders, although it remains to be established whether neuroinflammation is a consequence or a key etiological factor causing depression.

Further support to the neuroinflammation theory of affective disorders involving changes in the adult neurogenesis, originate from studies of neuroglial cells. Microglial cells migrate and become activated during cytokine-induced neuroinflammation (see for instance [105]) and their activity has been associated with impaired hippocampal neurogenesis and depressive states [106]. Impairment of neurogenesis by microglial activation might be



**Fig. 3 Gut, brain and immune system interactions.** The environment, which encompasses all the external factors to which the individual is exposed (stress, diet, infection,...), can lead to a change in the intestinal microbiota. Stimulation of the immune system by post-biotics and cytokines produced by the intestinal immune system will send signals to the brain, by at least two routes: the bloodstream and the nervous route. The blood signals arriving at the brain's barriers will cause activation of the barriers' immune system that pass to the brain tissue, resulting in a neuroinflammatory state. The inflammatory signals are then relayed within the brain tissue by microglial cells (yellow). In hippocampus, inflammatory signals have an inhibitory effect on neurogenesis. In areas where the barriers are absent (e.g., in the circumventricular organs), the signals can be received directly in the brain and activate specific neuronal circuits. For example, an activation loop involves the nucleus tractus solitarius (NTS) and the hypothalamus, resulting in the secretion of stress hormones such as corticosterone [179] by hypothalamic–pituitary–adrenal (HPA) axis. Stress hormones have a deleterious effect on hippocampal neurogenesis. The direct nervous route involves the vagus nerve activity that transmits signals directly to the NTS. Created with BioRender.com.

responsible for triggering, or potentiating, inflammatory-associated depressive symptoms, as found in animal models of depression (reviewed in ref. [107]). Manipulating the microglial phenotype is a potential strategy to treat affective disorders. Some translational data have shown that the action of antidepressant molecules such as ketamine may involve direct modulation of the activation state of microglial cells [108].

### IT TAKES TWO TO TANGO: AFFECTIVE DISORDER TREATMENTS AND ADULT NEUROGENESIS

Data obtained in rodents have shown that conventional antidepressants classes, such as selective serotonin reuptake inhibitors, noradrenaline reuptake inhibitors, tricyclics or monoamine oxidase inhibitors, all increase hippocampal neurogenesis [109, 110], or prevent their reduction by chronic stress exposure [111–113]. The two to four weeks delay in action observed for these treatments agree with a neurogenesis-dependent mechanism. However, it is important to note that these conventional antidepressant drugs also exhibit other effects such as dendritic spine density regulation in animal models [114, 115]. Interestingly, it has recently been shown that fluoxetine can stimulate progenitor renewal in peripheral organs such as bone marrow [116], adding more complexity to the action of antidepressants on the brain and peripheral organs.

The latest treatments developed, or under development, in the field of depression, (i.e., ketamine, esketamine or psilocybin), have a clear effect on neuroplasticity, with a rapid effect on BDNF production and dendritic spine regrowth. This mode of action explains their rapid effectiveness although repeated administrations are required to produce long-lasting antidepressant effect (for ketamine see [117–119]; for psilocybin [120, 121]). Importantly, it has been shown that both ketamine and psilocybin also have effect on hippocampal neurogenesis [122, 123]. Finally, it has been shown that neuromodulation treatments (i.e., therapeutic methods that modulate neural circuitries activity by electromagnetic

stimuli, electric current or ultrasound) have a clear effect in stimulating neurogenesis in rodents (see for review [124]). Robust data pointed out the effect of electroconvulsive therapy (ECT) on hippocampal neurogenesis [125, 126]. Other stimulation modalities such as repetitive transcranial magnetic stimulation [127], deep brain stimulation [128] and vagus nerve stimulation [129] also alter adult neurogenesis [124].

The link between treatments and neurogenesis is supported by post-mortem studies showing that patients exposed to antidepressant treatments exhibit increased hippocampal neurogenesis compared to untreated depressed patients [130–132] (see Table 1). Clinical studies have also shown that hippocampal volume decrease reported in MDD patients was counteracted by antidepressant drugs [133, 134]. In the same line, it was shown that hippocampal volume loss is a predictor of antidepressant response in patients [135, 136] or in patients treated with ECT [137].

Although low-grade inflammation has been evidenced in the depressed patient population and anti-inflammatory drugs showed encouraging results in pilot studies, anti-inflammatory drugs are not indicated as monotherapy or add-on treatment for depression yet (see for review [138]). However, in mice subjected to chronic stress, minocycline can counteract anxiety-depressive-like phenotype and stress-induced microglial activation associated with decrease in hippocampal neurogenesis [139].

Concerning BD, the mood stabilizer lithium (Li) is the gold standard treatment, but other molecules such as antipsychotics (e.g., clozapine or haloperidol) and anticonvulsants (e.g., lamotrigine or valproic acid), could be used. In mice, several studies suggest that Li could be acting through regulation of neurogenesis, although clear direct evidence is still missing [140, 141]. Recent in vitro experiments showed that high doses of Li treatment in human hippocampal progenitors increase the generation of neuroblasts [142]. In humans, MRI data demonstrated that Li accumulates in the hippocampus of BD patients [143] and numerous studies have shown an increase in hippocampal

volume after Li treatment (see for review [144]). Changes in hippocampal volume correlate with response to Li treatment and cognitive functioning improvement [145, 146].

Anticonvulsant mood stabilizers in particular valproic acid—which was widely used as a mood stabilizer before teratogenic effects and increased risk of neurodevelopmental disorders when prescribed to pregnant women were discovered—are common mood stabilizers [147, 148]. Valproic acid stimulates hippocampal neurogenesis and neuronal growth in rodent cortex [149]. In BD patients, valproic acid was not associated with modification in hippocampus volume contrary to Li treatment [145, 150]. Data are much more limited for lamotrigine, a treatment especially used for bipolar depression prophylaxis. Inconsistent results exist showing both increase [151] or reduction in neurogenesis rat hippocampus [152].

Finally, antipsychotic treatments can also be used as mood stabilizers. Antipsychotic drugs are divided into typical or first-generation antipsychotics (such as haloperidol and risperidone), characterized by dopamine D2 receptor antagonism and atypical (such as aripiprazole, olanzapine and clozapine) that share D2 receptor antagonism and additional pharmacological properties, including actions on serotonergic transmission. Chronic administration of atypical antipsychotics including olanzapine [153, 154], aripiprazole, and clozapine [154] were reported to increase hippocampal neurogenesis, whereas haloperidol has no effect [155–157] or a negative one [154]. Interestingly, some studies found a correlation between antipsychotics treatment and increase in neurogenesis in other brain areas including striatum, prefrontal cortex, and SVZ [155, 157]. The positive effect of atypical antipsychotics on neurogenesis may result from partial 5HT<sub>2A</sub> receptor antagonism and/or 5HT<sub>1A</sub> receptor agonism affecting the GSK3 $\beta$ /catenin pathway and BDNF production [158]. Therefore, the classification between typical and atypical antipsychotics could be based on their effect on neurogenesis rather than their pharmacological properties regarding neurotransmitter receptors affinity. Interestingly, these molecules are also used in the treatment of schizophrenia spectrum disorder patients, in which a decrease in hippocampal volume has also been demonstrated [159] and reversed by aripiprazole treatment [160].

Finally, other non-pharmacological interventions with a link to neurogenesis are discussed in the management of mood disorders, such as physical activity (see for review [161]). In mice, voluntary physical exercise is associated with an increase in hippocampal neurogenesis [162–164] and with enhancement of cognitive functions [165–167]. Physical exercise's effect on adult neurogenesis relies on circulating blood factors. Thus, transfer of plasma from aged exercised mice to aged sedentary mice has a positive effect on neurogenesis and cognitive functioning [168].

To conclude, the mechanism of action of mood disorder therapeutic drugs, mostly defined by their receptor affinities, raises important issues. Bearing in mind the ensemble of studies, molecules and treatments used to handle affective disorders might be considered through the prism of adult neurogenesis.

## MODELING AFFECTIVE DISORDERS OR MODELING AFFECTIVE FUNCTIONS?

The current limitation of translational approach in affective disorders lies in the heterogeneity of these diseases based on the Diagnostic and Statistical Manual of mental disorders (DSM, Diagnostic and statistical manual of mental disorders (5th ed., text rev.), American Psychiatric Association, 2022). The syndromic definition of diseases by a combination of symptoms that may vary from one patient to another, without associated pathophysiology or biomarkers, groups under the same entity diseases that are most likely different. This is a major obstacle to modeling. To solve this conundrum, these diagnoses should be dismantled into

simpler, or even unsupervised entities, where specific symptoms will be associated with a known pathophysiology.

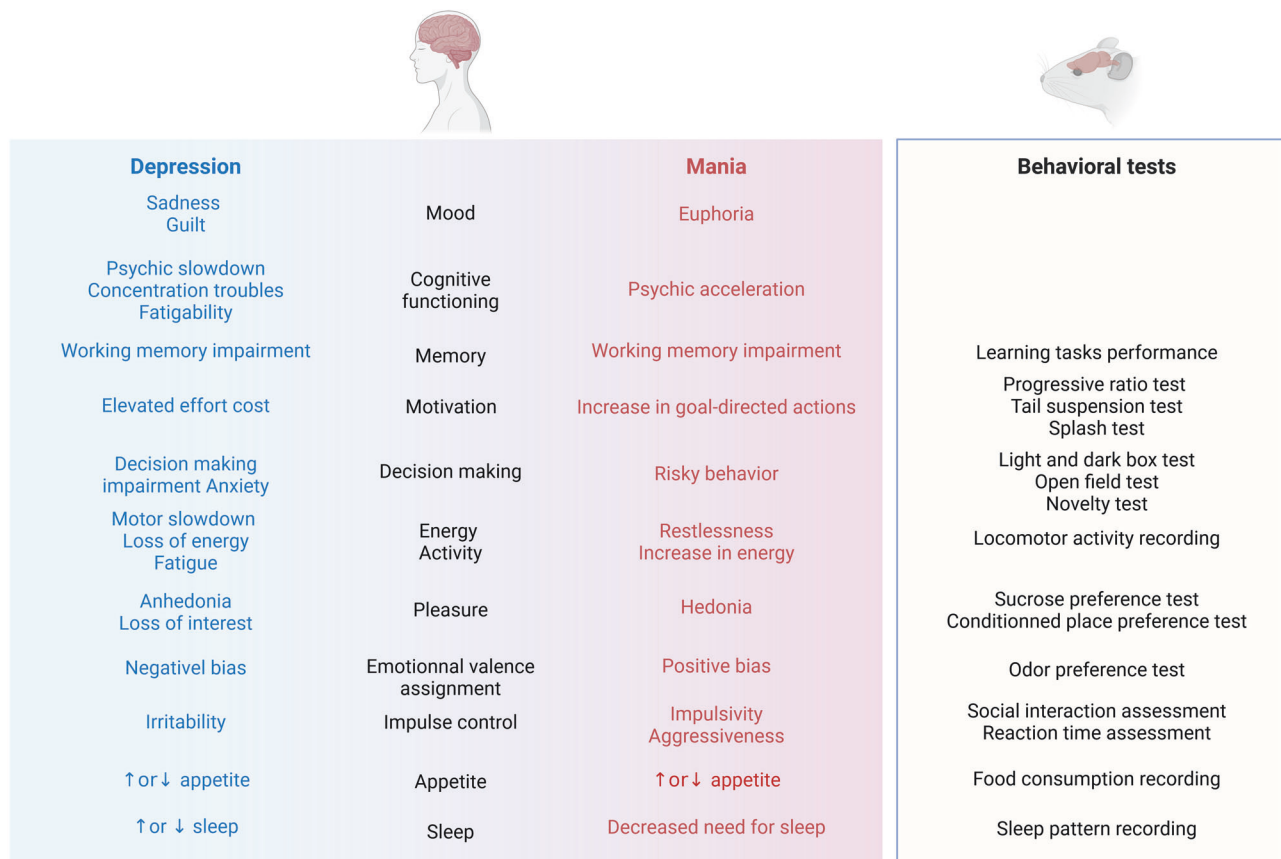
To enable this paradigm shift, it is essential to accurately describe the dimensions or functions affected in depression or mania. From this perspective, the approach based on the Research Domain Criteria framework was proposed to group clinical symptoms in six domains and facilitate research on mood disorders [169]. However, the major limitation in defining these domains is the absence of a link with a pathophysiological mechanism or biomarker. Thus, to define clusters of symptoms related to a given pathophysiology, it is necessary to return to specific symptoms or functions.

In patients, disturbances of several functions have been described: mood itself, cognitive functioning, memory, motivation, decision making, energy and activity, pleasure, emotional valence assignment, impulse control, appetite, and sleep. Most of these dimensions can be tested in animals with the batteries of behavioral tests available [170] (Fig. 4). Some dimensions, such as assessment of emotional valence shift by odor preference test, are newly proposed in the field [171]. It is important to note that some dimensions described by patients remain impossible to translate into animal models: mood itself with feelings of sadness, guilt, pessimism, or on the contrary euphoria or irritability; complex cognitive functions such as planning capabilities or suicidal ideation. Moreover, accessible behavioral tests should be considered with caution and need substantial refinements, because the readouts were obtained from short, highly controlled tests in impoverished environments and social contexts, quite distinct from the complexity of human behaviors [172].

Currently, animal models of mood disorders are mainly based on environmental, pharmacological and genetic manipulations (for review see [170, 173]) and seek to reproduce the symptoms seen in humans. For BD, the cyclicity of the symptoms is not reproducible in rodents and separate models are used for depressive phases and manic phases. Some of these models are based on well-known risk factors for mood disorders, such as repeated stress situations or HPA axis dysfunction for depression [170]. However, caution must be taken regarding the possible extension of specific models. For example, a depressive state can be induced by early maternal separation in rodents, which is rather related to early childhood trauma and is a risk factor for BD or other psychiatric disorders. Some models are only developed in male mice while the depressed patient population is predominantly women (Box 3). Another source of confusion consists in mixing models of acute stress with models of chronic manipulations leading to long-lasting anxiodepressive-like phenotypes. For instance, acute immunological stress such as unique LPS administration induces behavioral disturbances—called sickness behavior—that are similar to those seen in depression, yet they are only transient [174]. Thus, caution must be taken regarding the possible extension of this model to the inflammatory disturbances seen in depression, which correspond to chronic low-grade inflammation. For instance, induction of sepsis, which corresponds to an extreme form of acute inflammatory stress with severe sickness behavior, induces long-term anxiety symptoms suggestive of post-traumatic stress disorder rather than depressive disorders [175].

After checking the translational validity of the selected model, the specific functions affected could be described. Hence, some models reproduce only one dimension of the pathology concerned and others could copy negative emotional bias or anhedonia, as a landmark of depressive states. This approach could be more of a strength than a limitation, allowing to link these functions, or clusters of functions, with pathophysiological mechanisms. It is also likely that animals subjected to different models of depression (chronic stress, chronic exposure to corticosterone, chronic exposure to an inflammatory stimulus...)





**Fig. 4** Assessment of affective functions linked to clinical symptoms of mania or depression. Mood disorders, characterized by depressive state (blue) and manic state (red), can be described by impairment of affective functions (center). These functions should be tested with specific behavioral analysis in animal models (yellow box). Created with BioRender.com.

### Box 3. Does sex matter?

The systematic use of mice of both sexes to model mood disorders has been poorly addressed, although sex differences get more attention than in the past (for review see [185]). For instance, a large proportion of experiments have been carried out on male mice when two-thirds of patients are women [186]. The vulnerability of women to depression could be linked to a particular mechanism of regulation of neurogenesis. For instance, estrogen stimulates hippocampal neurogenesis (reviewed in [187]), by increasing the rate of proliferation [188] while male hormones increase the survival of new neurons but not cell proliferation [189].

present different anxiety-depressive patterns when assessed by the same battery of behavioral tests. Thus, the question to be addressed could no longer be whether an animal or a human is depressed, but rather in what way is this animal or human depressed?

### CONCLUDING REMARKS

This review aims to synthesized current evidence of the production of new neurons in the adult brain, including humans, its regulation from both external and internal stimuli, and its relationship with affective disorders. While there are several studies showing that reduced hippocampal neurogenesis is associated with depression and anxiety, the causal link between the two is still a topic of intense research. Animal studies provide strong support for a causal link between decreased hippocampal neurogenesis and depression-like behaviors. For instance, disrupting hippocampal neurogenesis induces depression-like behaviors in rodents, while increasing neurogenesis has an antidepressant-

like effect. Similarly, antidepressant drugs stimulate neurogenesis and alleviate depression-like behaviors. However, these findings have not been consistently replicated, and as described above some studies have failed to find a direct causal link between adult neurogenesis and affective disorders. Furthermore, it is not clear whether changes in adult neurogenesis are a cause or a consequence of affective disorders, or whether other factors such as chronic stress or inflammation may be involved. Therefore, while the evidence suggests that adult neurogenesis may play a role in affective disorders, more research is needed to fully understand the causal relationship between the two. Demonstrating the role of adult neurogenesis in human affective disorders is a challenging task because it is not possible to manipulate neurogenesis in the same way as in animal models. The study of adult neurogenesis is also puzzling and tedious because brain imaging techniques have limitations when it comes to resolving this process, although some tentative have been tried in the past [176]. There are several approaches we foresee to characterize the relationship between adult neurogenesis and affective disorders, in humans:

1. Neuroimaging studies: We believe that in vivo imaging approaches such as functional magnetic resonance imaging (fMRI) and positron emission tomography (PET) can be used to measure changes in brain cells activity (neurons but also microglial cells with specific tracers) and neurochemistry associated with depression. These techniques provide information about the functional connectivity and activity of the hippocampus and may indirectly suggest changes in adult neurogenesis. When applied to patients, SPECT (single photon emission computed tomography) and PET should be

helpful in linking changes occurring in behavior with brain structural/functional changes.

2. Post-mortem studies: Analysis of brain tissue from individuals who have died with a history of depression could help to establish whether there are structural differences in the hippocampus, as well as in other brain regions, compared to individuals without a history of mood disorders. The recent new markers and molecular signatures of adult human neurogenesis should help in this quest.
3. Pharmacological treatments: New drugs such as psychedelics should reveal new actions of antidepressant treatments on adult neurogenesis in humans.
4. Longitudinal studies: Studies that measure changes in adult neurogenesis over time in individuals with mood disorders should strengthen the field. By comparing changes in adult neurogenesis in individuals who respond to treatment *versus* those who do not, clinicians could gain insights into the role of adult neurogenesis in the development and treatment of affective disorders.
5. Understanding the mechanisms that regulate adult neurogenesis. In addition to these promising new methodological strategies, it may be useful to investigate the underlying molecular and cellular mechanisms that link neurogenesis to affective disorders. In this line, studying the role of gut microbiota, stress, inflammation, and neurotrophic signaling pathways, should be enlightening.
6. Use of human in vitro models: In vitro models of adult neurogenesis can be used to investigate how neurogenesis is affected in brain disorders [177, 178]. One common approach is to culture primary neural cells. Treating them with a serum of patients, the proliferation, differentiation, and maturation of neural stem cells and progenitor cells can be studied. Also, human/patient induced Pluripotent Stem Cells (iPSCs) can be used to generate human neurons, providing a platform to study the entire process of adult neurogenesis. Finally, 3D brain organoids are three-dimensional cultures of human brain cells that mimic certain aspects of brain development. They can be used to model aspects of adult neurogenesis within a more complex tissue structure.

Overall, a multi-disciplinary approach that combines clinical, neuroimaging, molecular, and pharmacological methods will be necessary to fully elucidate the complex relationship between adult neurogenesis and affective disorders, and to develop effective treatments for these conditions. In the meantime, it is interesting to realize how much the existence of adult neurogenesis in humans is becoming a dogma after several decades of heated debate.

## REFERENCES

1. Gross CG. Neurogenesis in the adult brain: death of a dogma. *Nat Rev Neurosci*. 2000;1:67–73.
2. Kempermann G. Adult neurogenesis: an evolutionary perspective. *Cold Spring Harb Perspect Biol*. 2015;8:a018986.
3. Terreros-Roncal J, Flor-García M, Moreno-Jiménez EP, Rodríguez-Moreno CB, Márquez-Valadez B, Gallardo-Caballero M, et al. Methods to study adult hippocampal neurogenesis in humans and across the phylogeny. *Hippocampus*. 2023;33:271–306.
4. Altman J. Are new neurons formed in the brains of adult mammals? *Science*. 1962;135:1127–8.
5. Bayer SA. Changes in the total number of dentate granule cells in juvenile and adult rats: a correlated volumetric and 3H-thymidine autoradiographic study. *Exp Brain Res*. 1982;46:315–23.
6. Bayer SA, Yackel JW, Puri PS. Neurons in the rat dentate gyrus granular layer substantially increase during juvenile and adult life. *Science*. 1982;216:890–2.
7. Goldman SA, Nottebohm F. Neuronal production, migration, and differentiation in a vocal control nucleus of the adult female canary brain. *Proc Natl Acad Sci USA*. 1983;80:2390–4.
8. Eriksson PS, Perfilieva E, Björk-Eriksson T, Alborn AM, Nordborg C, Peterson DA, et al. Neurogenesis in the adult human hippocampus. *Nat Med*. 1998;4:1313–7.
9. Ming G, Song H. Adult neurogenesis in the mammalian brain: significant answers and significant questions. *Neuron*. 2011;70:687–702.
10. Bonafina A, Paratcha G, Ledda F. Deciphering new players in the neurogenic adult hippocampal niche. *Front Cell Dev Biol*. 2020;8. Retrieved October 4, 2023, from <https://www.frontiersin.org/articles/10.3389/fcell.2020.00548>.
11. Obner K, Alvarez-Buylla A. Neural stem cells: origin, heterogeneity and regulation in the adult mammalian brain. *Development*. 2019;146:dev156059.
12. Gould E. How widespread is adult neurogenesis in mammals? *Nat Rev Neurosci*. 2007;8:481–8.
13. Feliciano DM, Bordey A, Bonfanti L. Noncanonical sites of adult neurogenesis in the mammalian brain. *Cold Spring Harb Perspect Biol*. 2015;7:a018846.
14. Kohler SJ, Williams NI, Stanton GB, Cameron JL, Greenough WT. Maturation time of new granule cells in the dentate gyrus of adult macaque monkeys exceeds six months. *Proc Natl Acad Sci USA*. 2011;108:10326–31.
15. Schmidt-Hieber C, Jonas P, Bischofberger J. Enhanced synaptic plasticity in newly generated granule cells of the adult hippocampus. *Nature*. 2004;429:184–7.
16. Rakic P. Limits of neurogenesis in primates. *Science*. 1985;227:1054–6.
17. Gould E, Tanapat P, McEwen BS, Flugge G, Fuchs E. Proliferation of granule cell precursors in the dentate gyrus of adult monkeys is diminished by stress. *Proc Natl Acad Sci USA*. 1998;95:3168–71.
18. Kornack DR, Rakic P. Continuation of neurogenesis in the hippocampus of the adult macaque monkey. *Proc Natl Acad Sci USA*. 1999;96:5768–73.
19. Kornack DR, Rakic P. The generation, migration, and differentiation of olfactory neurons in the adult primate brain. *Proc Natl Acad Sci USA*. 2001;98:4752–7.
20. Gould E, Reeves AJ, Fallah M, Tanapat P, Gross CG, Fuchs E. Hippocampal neurogenesis in adult Old World primates. *Proc Natl Acad Sci USA*. 1999;96:5263–7.
21. Gould E, Vail N, Wagers M, Gross CG. Adult-generated hippocampal and neocortical neurons in macaques have a transient existence. *Proc Natl Acad Sci USA*. 2001;98:10910–7.
22. Sorrells SF, Paredes MF, Cebrian-Silla A, Sandoval K, Qi D, Kelley KW, et al. Human hippocampal neurogenesis drops sharply in children to undetectable levels in adults. *Nature*. 2018;555:377–81.
23. Wang W, Wang M, Yang M, Zeng B, Qiu W, Ma Q, et al. Transcriptome dynamics of hippocampal neurogenesis in macaques across the lifespan and aged humans. *Cell Res*. 2022;32:729–43.
24. Sanai N, Tramontin AD, Quiñones-Hinojosa A, Barbaro NM, Gupta N, Kunwar S, et al. Unique astrocyte ribbon in adult human brain contains neural stem cells but lacks chain migration. *Nature*. 2004;427:740–4.
25. Quiñones-Hinojosa A, Sanai N, Soriano-Navarro M, Gonzalez-Perez O, Mirzadeh Z, Gil-Perotin S, et al. Cellular composition and cytoarchitecture of the adult human subventricular zone: a niche of neural stem cells. *J Comp Neurol*. 2006;494:415–34.
26. Bergmann O, Liebl J, Bernard S, Alkass K, Yeung MSY, Steier P, et al. The age of olfactory bulb neurons in humans. *Neuron*. 2012;74:634–9.
27. Wang C, Liu F, Liu Y-Y, Zhao C-H, You Y, Wang L, et al. Identification and characterization of neuroblasts in the subventricular zone and rostral migratory stream of the adult human brain. *Cell Res*. 2011;21:1534–50.
28. Curtis MA, Kam M, Nannmark U, Anderson MF, Axell MZ, Wikkelsjö C, et al. Human neuroblasts migrate to the olfactory bulb via a lateral ventricular extension. *Science*. 2007;315:1243–9.
29. Kam M, Curtis MA, McGlashan SR, Connor B, Nannmark U, Faull RLM. The cellular composition and morphological organization of the rostral migratory stream in the adult human brain. *J Chem Neuroanat*. 2009;37:196–205.
30. Sanai N, Nguyen T, Ihrie RA, Mirzadeh Z, Tsai H-H, Wong M, et al. Corridors of migrating neurons in the human brain and their decline during infancy. *Nature*. 2011;478:382–6.
31. Spalding KL, Bhardwaj RD, Buchholz BA, Druid H, Frisén J. Retrospective birth dating of cells in humans. *Cell*. 2005;122:133–43.
32. Spalding KL, Bergmann O, Alkass K, Bernard S, Salehpour M, Huttner HB, et al. Dynamics of hippocampal neurogenesis in adult humans. *Cell*. 2013;153:1219–27.
33. Boekhoorn K, Joels M, Lucassen PJ. Increased proliferation reflects glial and vascular-associated changes, but not neurogenesis in the presenile Alzheimer hippocampus. *Neurobiol Dis*. 2006;24:1–14.
34. Liu YWJ, Curtis MA, Gibbons HM, Mee EW, Bergin PS, Teoh HH, et al. Doublecortin expression in the normal and epileptic adult human brain. *Eur J Neurosci*. 2008;28:2254–65.
35. Gatt A, Ekonomou A, Somani A, Thuret S, Howlett D, Corbett A, et al. Importance of proactive treatment of depression in lewy body dementias: the impact on hippocampal neurogenesis and cognition in a post-mortem study. *Dement Geriatr Cogn Disord*. 2017;44:283–93.



36. Ernst A, Alkass K, Bernard S, Salehpour M, Perl S, Tisdale J, et al. Neurogenesis in the striatum of the adult human brain. *Cell*. 2014;156:1072–83.
37. Curtis MA, Penney EB, Pearson AG, van Roon-Mom WMC, Butterworth NJ, Dragunow M, et al. Increased cell proliferation and neurogenesis in the adult human Huntington's disease brain. *Proc Natl Acad Sci USA*. 2003;100:9023–7.
38. Martí-Mengual U, Varea E, Crespo C, Blasco-Ibáñez JM, Nacher J. Cells expressing markers of immature neurons in the amygdala of adult humans. *Eur J Neurosci*. 2013;37:10–22.
39. Sorrells SF, Paredes MF, Velmeshev D, Herranz-Pérez V, Sandoval K, Mayer S, et al. Immature excitatory neurons develop during adolescence in the human amygdala. *Nat Commun*. 2019;10:2748.
40. Li Y-N, Hu D-D, Cai X-L, Wang Y, Yang C, Jiang J, et al. Doublecortin-expressing neurons in human cerebral cortex layer II and Amygdala from infancy to 100 years old. *Mol Neurobiol*. 2023;60:3464–85.
41. Batailler M, Drogue M, Baroncini M, Fontaine C, Prevot V, Migaud M. DCX-expressing cells in the vicinity of the hypothalamic neurogenic niche: a comparative study between mouse, sheep, and human tissues. *J Comp Neurol*. 2014;522:1966–85.
42. Dennis CV, Suh LS, Rodriguez ML, Kril JJ, Sutherland GT. Human adult neurogenesis across the ages: an immunohistochemical study. *Neuropathol Appl Neurobiol*. 2016;42:621–38.
43. Mathews KJ, Allen KM, Boerrigter D, Ball H, Shannon Weickert C, Double KL. Evidence for reduced neurogenesis in the aging human hippocampus despite stable stem cell markers. *Aging Cell*. 2017;16:1195–9.
44. Boldrini M, Fulmore CA, Tartt AN, Simeon LR, Pavlova I, Poposka V, et al. Human hippocampal neurogenesis persists throughout aging. *Cell Stem Cell*. 2018;22:589–99.e5.
45. Kempermann G, Gage FH, Aigner L, Song H, Curtis MA, Thuret S, et al. Human adult neurogenesis: evidence and remaining questions. *Cell Stem Cell*. 2018. <https://doi.org/10.1016/j.stem.2018.04.004>.
46. Paredes MF, Sorrells SF, Cebrian-Silla A, Sandoval K, Qi D, Kelley KW, et al. Does adult neurogenesis persist in the human hippocampus? *Cell Stem Cell*. 2018;23:780–1.
47. Tartt AN, Fulmore CA, Liu Y, Rosoklija GB, Dwork AJ, Arango V, et al. Considerations for assessing the extent of hippocampal neurogenesis in the adult and aging human brain. *Cell Stem Cell*. 2018;23:782–3.
48. Terreros-Roncal J, Moreno-Jiménez EP, Flor-García M, Rodríguez-Moreno CB, Trinchero MF, Cafini F, et al. Impact of neurodegenerative diseases on human adult hippocampal neurogenesis. *Science*. 2021;374:1106–13.
49. Moreno-Jiménez EP, Flor-García M, Terreros-Roncal J, Rábano A, Cafini F, Pallas-Bazarrá N, et al. Adult hippocampal neurogenesis is abundant in neurologically healthy subjects and drops sharply in patients with Alzheimer's disease. *Nat Med*. 2019. <https://doi.org/10.1038/s41591-019-0375-9>.
50. Tobin MK, Musaraca K, Disouky A, Shetti A, Bheri A, Honer WG, et al. Human hippocampal neurogenesis persists in aged adults and Alzheimer's disease patients. *Cell Stem Cell*. 2019;24:974–82.e3.
51. Gallardo-Caballero M, Rodríguez-Moreno CB, Álvarez-Méndez L, Terreros-Roncal J, Flor-García M, Moreno-Jiménez EP, et al. Prolonged fixation and post-mortem delay impede the study of adult neurogenesis in mice. *Commun Biol*. 2023;6:978.
52. Lucassen PJ, Toni N, Kempermann G, Frisen J, Gage FH, Swaab DF. Limits to human neurogenesis—really? *Mol Psychiatry*. 2020;25:2207–09.
53. Duque A, Arellano JI, Rakic P. An assessment of the existence of adult neurogenesis in humans and value of its rodent models for neuropsychiatric diseases. *Mol Psychiatry*. 2022;27:377–82.
54. La Rosa C, Parolisi R, Bonfanti L. Brain structural plasticity: from adult neurogenesis to immature neurons. *Front Neurosci*. 2020;14:75.
55. Kalinina A, Lagace D. Single-cell and single-nucleus RNAseq analysis of adult neurogenesis. *Cells*. 2022;11:1633.
56. Zhou Y, Su Y, Li S, Kennedy BC, Zhang DY, Bond AM, et al. Molecular landscapes of human hippocampal immature neurons across lifespan. *Nature*. 2022;607:527–33.
57. Franjic D, Skarica M, Ma S, Arellano JI, Tebbenkamp ATN, Choi J, et al. Transcriptomic taxonomy and neurogenic trajectories of adult human, macaque, and pig hippocampal and entorhinal cells. *Neuron*. 2022;110:452–69.e14.
58. Ernst A, Frisén J. Adult neurogenesis in humans—common and unique traits in mammals. *PLOS Biol*. 2015;13:e1002045.
59. Abrous DN, Koehl M, Lemoine M. A Baldwin interpretation of adult hippocampal neurogenesis: from functional relevance to physiopathology. *Mol Psychiatry*. 2022;27:383–402.
60. Tyng CM, Amin HU, Saad MNM, Malik AS. The influences of emotion on learning and memory. *Front Psychol*. 2017;8. Retrieved June 15, 2023, from <https://www.frontiersin.org/articles/10.3389/fpsyg.2017.01454>.
61. Sun D, Mei L, Xiong W-C. Dorsal Dentate Gyrus, a key regulator for mood and psychiatric disorders. *Biol Psychiatry*. 2023;93:1071–80.
62. Shors TJ, Miesegaes G, Beylin A, Zhao M, Rydel T, Gould E. Neurogenesis in the adult is involved in the formation of trace memories. *Nature*. 2001;410:372–6.
63. Jessberger S, Clark RE, Broadbent NJ, Clemenson GD, Consiglio A, Lie DC, et al. Dentate gyrus-specific knockdown of adult neurogenesis impairs spatial and object recognition memory in adult rats. *Learn Mem Cold Spring Harb N*. 2009;16:147–54.
64. Miller SM, Sahay A. Functions of adult-born neurons in hippocampal memory interference and indexing. *Nat Neurosci*. 2019;22:1565–75.
65. Ishikawa R, Fukushima H, Frankland PW, Kida S. Hippocampal neurogenesis enhancers promote forgetting of remote fear memory after hippocampal reactivation by retrieval. *eLife*. 2016;5:e17464.
66. Kempermann G. What is adult hippocampal neurogenesis good for? *Front Neurosci*. 2022;16. Retrieved July 25, 2023, from <https://www.frontiersin.org/articles/10.3389/fnins.2022.852680>.
67. Gomes-Leal W. Adult hippocampal neurogenesis and affective disorders: new neurons for psychic well-being. *Front Neurosci*. 2021;15. Retrieved July 25, 2023, from <https://www.frontiersin.org/articles/10.3389/fnins.2021.594448>.
68. Revest J-M, Dupret D, Koehl M, Funk-Reiter C, Grosjean N, Piazza P-V, et al. Adult hippocampal neurogenesis is involved in anxiety-related behaviors. *Mol Psychiatry*. 2009;14:959–67.
69. Gozel O, Gerstner W. A functional model of adult dentate gyrus neurogenesis. *eLife*. 2021;10:e66463.
70. Toni N, Teng EM, Bushong EA, Aimone JB, Zhao C, Consiglio A, et al. Synapse formation on neurons born in the adult hippocampus. *Nat Neurosci*. 2007;10:727–34.
71. Toni N, Laplagne DA, Zhao C, Lombardi G, Ribak CE, Gage FH, et al. Neurons born in the adult dentate gyrus form functional synapses with target cells. *Nat Neurosci*. 2008;11:901–7.
72. Finnegan R, Becker S. Neurogenesis paradoxically decreases both pattern separation and memory interference. *Front Syst Neurosci*. 2015;9:136.
73. Berdugo-Vega G, Arias-Gil G, López-Fernández A, Artegiani B, Wasielewska JM, Lee C-C, et al. Increasing neurogenesis refines hippocampal activity rejuvenating navigational learning strategies and contextual memory throughout life. *Nat Commun*. 2020;11:135.
74. McHugh SB, Lopes-Dos-Santos V, Gava GP, Hartwich K, Tam SKE, Bannerman DM, et al. Adult-born dentate granule cells promote hippocampal population sparsity. *Nat Neurosci*. 2022;25:1481–91.
75. Vivar C, Potter MC, Choi J, Lee J, Stringer TP, Callaway EM, et al. Monosynaptic inputs to new neurons in the dentate gyrus. *Nat Commun*. 2012;3:1107.
76. Snyder JS, Soumier A, Brewer M, Pickel J, Cameron HA. Adult hippocampal neurogenesis buffers stress responses and depressive behaviour. *Nature*. 2011;476:458–61.
77. Dranovsky A, Hen R. Hippocampal neurogenesis: regulation by stress and antidepressants. *Biol Psychiatry*. 2006;59:1136–43.
78. Micheli L, Ceccarelli M, D'Andrea G, Tirone F. Depression and adult neurogenesis: positive effects of the antidepressant fluoxetine and of physical exercise. *Brain Res Bull*. 2018;143:181–93.
79. de Vos WM, Tilg H, Van Hul M, Cani PD. Gut microbiome and health: mechanistic insights. *Gut*. 2022;71:1020–32.
80. Ogbonnaya ES, Clarke G, Shanahan F, Dinan TG, Cryan JF, O'Leary OF. Adult hippocampal neurogenesis is regulated by the microbiome. *Biol Psychiatry*. 2015;78:e7–9.
81. Kundu P, Lee HU, Garcia-Perez I, Tay EXY, Kim H, Faylon LE, et al. Neurogenesis and longevity signaling in young germ-free mice transplanted with the gut microbiota of old mice. *Sci Transl Med*. 2019;11:eaau4760.
82. Rei D, Saha S, Haddad M, Rubio AH, Perlaza BL, Berard M, et al. Age-associated gut microbiota impair hippocampus-dependent memory in a vagus-dependent manner. *JCI Insight*. 2022;7:e147700.
83. Ribeiro MF, Santos AA, Afonso MB, Rodrigues PM, Sá Santos S, Castro RE, et al. Diet-dependent gut microbiota impacts on adult neurogenesis through mitochondrial stress modulation. *Brain Commun*. 2020;2:fcaa165.
84. Möhle L, Mattei D, Heimesaat MM, Bereswill S, Fischer A, Alutis M, et al. Ly6C(hi) monocytes provide a link between antibiotic-induced changes in gut microbiota and adult hippocampal neurogenesis. *Cell Rep*. 2016;15:1945–56.
85. Guzzetta KE, Cryan JF, O'Leary OF. Microbiota-gut-brain axis regulation of adult hippocampal neurogenesis. *Brain Plast Amst Neth*. 2022;8:97–119.
86. Chevalier G, Siopi E, Guenin-Macé L, Pascal M, Laval T, Rifflet A, et al. Effect of gut microbiota on depressive-like behaviors in mice is mediated by the endocannabinoid system. *Nat Commun*. 2020;11:6363.
87. Siopi E, Chevalier G, Katsimpardi L, Saha S, Bigot M, Moigneu C, et al. Changes in gut microbiota by chronic stress impair the efficacy of fluoxetine. *Cell Rep*. 2020;30:3682–90.e6.
88. Kelly JR, Borre Y, O'Brien C, Patterson E, El Aidy S, et al. Transferring the blues: depression-associated gut microbiota induces neurobehavioural changes in the rat. *J Psychiatr Res*. 2016;82:109–18.

89. Siopi E, Galerne M, Rivagorda M, Saha S, Moigneu C, Moriceau S, et al. Gut microbiota changes require vagus nerve integrity to promote depressive-like behaviors in mice. *Mol Psychiatry*. 2023;28:3002–12.
90. Diaz-Aparicio I, Paris I, Sierra-Torre V, Plaza-Zabala A, Rodríguez-Iglesias N, Márquez-Ropero M, et al. Microglia actively remodel adult hippocampal neurogenesis through the phagocytosis secretome. *J Neurosci J Soc Neurosci*. 2020;40:1453–82.
91. Raison CL, Capuron L, Miller AH. Cytokines sing the blues: inflammation and the pathogenesis of depression. *Trends Immunol*. 2006;27:24–31.
92. Ekdahl CT, Claassen J-H, Bonde S, Kokaia Z, Lindvall O. Inflammation is detrimental for neurogenesis in adult brain. *Proc Natl Acad Sci USA*. 2003;100:13632–7.
93. Guan Z, Fang J. Peripheral immune activation by lipopolysaccharide decreases neurotrophins in the cortex and hippocampus in rats. *Brain Behav Immun*. 2006;20:64–71.
94. Llorens-Martin M, Jurado-Arjona J, Fuster-Matanzo A, Hernández F, Rábano A, Ávila J. Peripherally triggered and GSK-3 $\beta$ -driven brain inflammation differentially skew adult hippocampal neurogenesis, behavioral pattern separation and microglial activation in response to ibuprofen. *Transl Psychiatry*. 2014;4:e463.
95. Troubat R, Barone P, Leman S, Desmidt T, Cressant A, Atanasova B, et al. Neuroinflammation and depression: a review. *Eur J Neurosci*. 2021;53:151–71.
96. Maes M, Meltzer HY, Bosmans E, Bergmans R, Vandoolaeghe E, Ranjan R, et al. Increased plasma concentrations of interleukin-6, soluble interleukin-6, soluble interleukin-2 and transferrin receptor in major depression. *J Affect Disord*. 1995;34:301–9.
97. Haapakoski R, Mathieu J, Ebmeier KP, Alenius H, Kivimäki M. Cumulative meta-analysis of interleukins 6 and 1 $\beta$ , tumour necrosis factor  $\alpha$  and C-reactive protein in patients with major depressive disorder. *Brain Behav Immun*. 2015;49:206–15.
98. Osimo EF, Pillinger T, Rodríguez IM, Khandaker GM, Pariante CM, Howes OD. Inflammatory markers in depression: a meta-analysis of mean differences and variability in 5166 patients and 5,083 controls. *Brain Behav Immun*. 2020;87:901–9.
99. Goldsmith DR, Rapaport MH, Miller BJ. A meta-analysis of blood cytokine network alterations in psychiatric patients: comparisons between schizophrenia, bipolar disorder and depression. *Mol Psychiatry*. 2016;21:1696–709.
100. Raison CL, Dantzer R, Kelley KW, Lawson MA, Woolwine BJ, Vogt G, et al. CSF concentrations of brain tryptophan and kynurenines during immune stimulation with IFN- $\alpha$ : relationship to CNS immune responses and depression. *Mol Psychiatry*. 2010;15:393–403.
101. Capuron L, Gumnick JF, Musselman DL, Lawson DH, Reemsnyder A, Nemeroff CB, et al. Neurobehavioral effects of interferon- $\alpha$  in cancer patients: phenomenology and paroxetine responsiveness of symptom dimensions. *Neuropsychopharmacol Publ Am Coll Neuropsychopharmacol*. 2002;26:643–52.
102. Georgin-Lavialle S, Moura DS, Salvador A, Chauvet-Gelinier J-C, Launay J-M, Damaj G, et al. Mast cells' involvement in inflammation pathways linked to depression: evidence in mastocytosis. *Mol Psychiatry*. 2016;21:1511–6.
103. Moncrieff J, Cooper RE, Stockmann T, Amendola S, Hengartner MP, Horowitz MA. The serotonin theory of depression: a systematic umbrella review of the evidence. *Mol Psychiatry*. 2022. <https://doi.org/10.1038/s41380-022-01661-0>.
104. Savitz J. The kynurenine pathway: a finger in every pie. *Mol Psychiatry*. 2020;25:131–47.
105. Streit WJ, Mrak RE, Griffin WST. Microglia and neuroinflammation: a pathological perspective. *J Neuroinflammation*. 2004;1:14.
106. DeCarolis NA, Eisch AJ. Hippocampal neurogenesis as a target for the treatment of mental illness: a critical evaluation. *Neuropharmacology*. 2010;58:884–93.
107. Rahimian R, Belliveau C, Chen R, Mechawar N. Microglial inflammatory-metabolic pathways and their potential therapeutic implication in major depressive disorder. *Front Psychiatry*. 2022;13:871997.
108. Verdonk F, Petit A-C, Abdel-Ahad P, Vincikier F, Jouvion G, de Maricourt P, et al. Microglial production of quinolinic acid as a target and a biomarker of the antidepressant effect of ketamine. *Brain Behav Immun*. 2019;81:361–73.
109. Malberg JE, Eisch AJ, Nestler EJ, Duman RS. Chronic antidepressant treatment increases neurogenesis in adult rat hippocampus. *J Neurosci J Soc Neurosci*. 2000;20:9104–10.
110. Santarelli L, Saxe M, Gross C, Surget A, Battaglia F, Dulawa S, et al. Requirement of hippocampal neurogenesis for the behavioral effects of antidepressants. *Science*. 2003;301:805–9.
111. Malberg JE, Duman RS. Cell proliferation in adult hippocampus is decreased by inescapable stress: reversal by fluoxetine treatment. *Neuropsychopharmacol Publ Am Coll Neuropsychopharmacol*. 2003;28:1562–71.
112. Alonso R, Griebel G, Pavone G, Stemmelin J, Le Fur G, Soubrié P. Blockade of CRF(1) or V(1b) receptors reverses stress-induced suppression of neurogenesis in a mouse model of depression. *Mol Psychiatry*. 2004;9:224.
113. van der Hart MGC, Czéh B, de Biurrun G, Michaelis T, Watanabe T, Natt O, et al. Substance P receptor antagonist and clomipramine prevent stress-induced alterations in cerebral metabolites, cytochrome in the dentate gyrus and hippocampal volume. *Mol Psychiatry*. 2002;7:933–41.
114. Stewart CA, Reid IC. Repeated ECS and fluoxetine administration have equivalent effects on hippocampal synaptic plasticity. *Psychopharmacology (Berl)*. 2000;148:217–23.
115. Huang G-J, Ben-David E, Tort Piella A, Edwards A, Flint J, Shifman S. Neuroendocrine evidence for a shared mechanism of the antidepressant effects of exercise and chronic fluoxetine in mice. *PLoS One*. 2012;7:e35901.
116. Sibon D, Coman T, Rossignol J, Lamarque M, Kosmider O, Bayard E, et al. Enhanced renewal of erythroid progenitors in myelodysplastic anemia by peripheral serotonin. *Cell Rep*. 2019;26:3246–56.e4.
117. Li N, Lee B, Liu R-J, Banasr M, Dwyer JM, Iwata M, et al. mTOR-dependent synapse formation underlies the rapid antidepressant effects of NMDA antagonists. *Science*. 2010;329:959–64.
118. Li N, Liu R-J, Dwyer JM, Banasr M, Lee B, Son H, et al. Glutamate N-methyl-D-aspartate receptor antagonists rapidly reverse behavioral and synaptic deficits caused by chronic stress exposure. *Biol Psychiatry*. 2011;69:754–61.
119. Moda-Sava RN, Murdock MH, Parekh PK, Fetcho RN, Huang BS, Huynh TN, et al. Sustained rescue of prefrontal circuit dysfunction by antidepressant-induced spine formation. *Science*. 2019;364:eaat8078.
120. Ly C, Greb AC, Cameron LP, Wong JM, Barragan EV, Wilson PC, et al. Psychedelics promote structural and functional neural plasticity. *Cell Rep*. 2018;23:3170–82.
121. Shao L-X, Liao C, Gregg I, Davoudian PA, Savalia NK, Delagarza K, et al. Psilocybin induces rapid and persistent growth of dendritic spines in frontal cortex in vivo. *Neuron*. 2021;109:2535–2544.e4.
122. Yamada J, Jinno S. Potential link between antidepressant-like effects of ketamine and promotion of adult neurogenesis in the ventral hippocampus of mice. *Neuropharmacology*. 2019;158:107710.
123. Rawat R, Tunc-Ozcan E, McGuire TL, Peng C-Y, Kessler JA. Ketamine activates adult-born immature granule neurons to rapidly alleviate depression-like behaviors in mice. *Nat Commun*. 2022;13:2650.
124. Flores AD, Yu WS, Fung M-L, Lim LW. Neuromodulation and hippocampal neurogenesis in depression: a scoping review. *Brain Res Bull*. 2022;188:92–107.
125. Schloesser RJ, Orvoen S, Jimenez DV, Hardy NF, Maynard KR, Sukumar M, et al. Antidepressant-like effects of electroconvulsive seizures require adult neurogenesis in a neuroendocrine model of depression. *Brain Stimul*. 2015;8:862–7.
126. Olesen MV, Wörtwein G, Folke J, Pakkenberg B. Electroconvulsive stimulation results in long-term survival of newly generated hippocampal neurons in rats. *Hippocampus*. 2017;27:52–60.
127. Feng S, Shi T, Fan Y, Wang W, Chen Y, Tan Q. Long-lasting effects of chronic rTMS to treat chronic rodent model of depression. *Behav Brain Res*. 2012;232:245–51.
128. Schmuckermair C, Gaburro S, Sah A, Landgraf R, Sartori SB, Singewald N. Behavioral and neurobiological effects of deep brain stimulation in a mouse model of high anxiety- and depression-like behavior. *Neuropsychopharmacol Publ Am Coll Neuropsychopharmacol*. 2013;38:1234–44.
129. Gebhardt N, Bär K-J, Boettger MK, Grecksch G, Keilhoff G, Reichart R, et al. Vagus nerve stimulation ameliorated deficits in one-way active avoidance learning and stimulated hippocampal neurogenesis in bulbectomized rats. *Brain Stimul*. 2013;6:78–83.
130. Boldrini M, Underwood MD, Hen R, Rosoklija GB, Dwork AJ, John Mann J, et al. Antidepressants increase neural progenitor cells in the human hippocampus. *Neuropsychopharmacol Publ Am Coll Neuropsychopharmacol*. 2009;34:2376–89.
131. Boldrini M, Hen R, Underwood MD, Rosoklija GB, Dwork AJ, Mann JJ, et al. Hippocampal angiogenesis and progenitor cell proliferation are increased with antidepressant use in major depression. *Biol Psychiatry*. 2012;72:562–71.
132. Epp JR, Beasley CL, Galea LA. Increased hippocampal neurogenesis and p21 expression in depression: dependent on antidepressants, sex, age, and antipsychotic exposure. *Neuropsychopharmacol Publ Am Coll Neuropsychopharmacol*. 2013;38:2297–306.
133. Sheline YI, Gado MH, Kraemer HC. Untreated depression and hippocampal volume loss. *Am J Psychiatry*. 2003;160:1516–8.
134. Tai H-H, Cha J, Vedaei F, Dunlop BW, Craighead WE, Mayberg HS, et al. Treatment-specific hippocampal subfield volume changes with antidepressant medication or cognitive-behavior therapy in treatment-naïve depression. *Front Psychiatry*. 2021;12:718539.
135. Nogovitsyn N, Muller M, Souza R, Hassel S, Arnott SR, Davis AD, et al. Hippocampal tail volume as a predictive biomarker of antidepressant treatment outcomes in patients with major depressive disorder: a CAN-BIND report. *Neuropsychopharmacol Publ Am Coll Neuropsychopharmacol*. 2020;45:283–91.
136. Zarate-Garza PP, Ortega-Balderas JA, Ontiveros-Sanchez de la Barquera JA, Lugo-Guillen RA, Marfil-Rivera A, Quiroga-Garza A, et al. Hippocampal volume as treatment predictor in antidepressant naïve patients with major depressive disorder. *J Psychiatr Res*. 2021;140:323–8.

137. Gblyl K, Rostrup E, Raghava JM, Andersen C, Rosenberg R, Larsson HBW, et al. Volume of hippocampal subregions and clinical improvement following electroconvulsive therapy in patients with depression. *Prog Neuropsychopharmacol Biol Psychiatry*. 2021;104:110048.
138. Kohler O, Krogh J, Mors O, Benros ME. Inflammation in depression and the potential for anti-inflammatory treatment. *Curr Neuropsychopharmacol*. 2016;14:732–42.
139. Bassett B, Subramaniam S, Fan Y, Varney S, Pan H, Carneiro AMD, et al. Minocycline alleviates depression-like symptoms by rescuing decrease in neurogenesis in dorsal hippocampus via blocking microglia activation/phagocytosis. *Brain Behav Immun*. 2021;91:519–30.
140. Zanni G, Michno W, Di Martino E, Tjærnlund-Wolf A, Pettersson J, Mason CE, et al. Lithium accumulates in neurogenic brain regions as revealed by high resolution ion imaging. *Sci Rep*. 2017;7:40726.
141. Huo K, Sun Y, Li H, Du X, Wang X, Karlsson N, et al. Lithium reduced neural progenitor apoptosis in the hippocampus and ameliorated functional deficits after irradiation to the immature mouse brain. *Mol Cell Neurosci*. 2012;51:32–42.
142. Palmos AB, Duarte RRR, Smeeth DM, Hedges EC, Nixon DF, Thuret S, et al. Lithium treatment and human hippocampal neurogenesis. *Transl Psychiatry*. 2021;11:555.
143. Stout J, Hozer F, Coste A, Mauconduit F, Djebani-Oussedik N, Sarrazin S, et al. Accumulation of lithium in the hippocampus of patients with bipolar disorder: a lithium-7 magnetic resonance imaging study at 7 Tesla. *Biol Psychiatry*. 2020;88:426–33.
144. Lucini-Paioni S, Squarcina L, Cousins DA, Brambilla P. Lithium effects on Hippocampus volumes in patients with bipolar disorder. *J Affect Disord*. 2021;294:521–6.
145. Lyoo IK, Dager SR, Kim JE, Yoon SJ, Friedman SD, Dunner DL, et al. Lithium-induced gray matter volume increase as a neural correlate of treatment response in bipolar disorder: a longitudinal brain imaging study. *Neuropsychopharmacol Publ Am Coll Neuropsychopharmacol*. 2010;35:1743–50.
146. Yucel K, McKinnon MC, Taylor VH, Macdonald K, Alda M, Young LT, et al. Bilateral hippocampal volume increases after long-term lithium treatment in patients with bipolar disorder: a longitudinal MRI study. *Psychopharmacology (Berl)*. 2007;195:357–67.
147. Jentink J, Loane MA, Dolk H, Barisic I, Garne E, Morris JK, et al. Valproic acid monotherapy in pregnancy and major congenital malformations. *N Engl J Med*. 2010;362:2185–93.
148. Bjørk M-H, Zoega H, Leinonen MK, Cohen JM, Dreier JW, Furu K, et al. Association of prenatal exposure to antiepileptic medication with risk of autism and intellectual disability. *JAMA Neurol*. 2022;79:672–81.
149. Hao Y, Creson T, Zhang L, Li P, Du F, Yuan P, et al. Mood stabilizer valproate promotes ERK pathway-dependent cortical neuronal growth and neurogenesis. *J Neurosci J Soc Neurosci*. 2004;24:6590–9.
150. Beyer JL, Kuchibhatla M, Payne ME, Moo-Young M, Cassidy F, Macfall J, et al. Hippocampal volume measurement in older adults with bipolar disorder. *Am J Geriatr Psychiatry J Am Assoc Geriatr Psychiatry*. 2004;12:613–20.
151. Kondziella D, Strandberg J, Lindqvist C, Asztely F. Lamotrigine increases the number of BrdU-labeled cells in the rat hippocampus. *Neuroreport*. 2011;22:97–100.
152. Chen J, Quan Q-Y, Yang F, Wang Y, Wang J-C, Zhao G, et al. Effects of lamotrigine and topiramate on hippocampal neurogenesis in experimental temporal-lobe epilepsy. *Brain Res*. 2010;1313:270–82.
153. Kodama M, Fujioka T, Duman RS. Chronic olanzapine or fluoxetine administration increases cell proliferation in hippocampus and prefrontal cortex of adult rat. *Biol Psychiatry*. 2004;56:570–80.
154. Chikama K, Yamada H, Tsukamoto T, Kajitani K, Nakabeppu Y, Uchimura N. Chronic atypical antipsychotics, but not haloperidol, increase neurogenesis in the hippocampus of adult mouse. *Brain Res*. 2017;1676:77–82.
155. Wakade CG, Mahadik SP, Waller JL, Chiu F-C. Atypical neuroleptics stimulate neurogenesis in adult rat brain. *J Neurosci Res*. 2002;69:72–79.
156. Halim ND, Weickert CS, McClintock BW, Weinberger DR, Lipska BK. Effects of chronic haloperidol and clozapine treatment on neurogenesis in the adult rat hippocampus. *Neuropsychopharmacol Publ Am Coll Neuropsychopharmacol*. 2004;29:1063–9.
157. Wang H-D, Dunnivant FD, Jarman T, Deutch AY. Effects of antipsychotic drugs on neurogenesis in the forebrain of the adult rat. *Neuropsychopharmacol Publ Am Coll Neuropsychopharmacol*. 2004;29:1230–8.
158. Kusumi I, Boku S, Takahashi Y. Psychopharmacology of atypical antipsychotic drugs: from the receptor binding profile to neuroprotection and neurogenesis. *Psychiatry Clin Neurosci*. 2015;69:243–58.
159. Chakos MH, Schobel SA, Gu H, Gerig G, Bradford D, Charles C, et al. Duration of illness and treatment effects on hippocampal volume in male patients with schizophrenia. *Br J Psychiatry J Ment Sci*. 2005;186:26–31.
160. Bodnar M, Malla AK, Makowski C, Chakravarty MM, Joober R, Lepage M. The effect of second-generation antipsychotics on hippocampal volume in first episode of psychosis: longitudinal study. *BJPsych Open*. 2016;2:139–46.
161. Ma C-L, Ma X-T, Wang J-J, Liu H, Chen Y-F, Yang Y. Physical exercise induces hippocampal neurogenesis and prevents cognitive decline. *Behav Brain Res*. 2017;317:332–9.
162. van Praag H, Kempermann G, Gage FH. Running increases cell proliferation and neurogenesis in the adult mouse dentate gyrus. *Nat Neurosci*. 1999;2:266–70.
163. Vivar C, Potter MC, van Praag H. All about running: synaptic plasticity, growth factors and adult hippocampal neurogenesis. *Curr Top Behav Neurosci*. 2013;15:189–210.
164. Patten AR, Yau SY, Fontaine CJ, Meconi A, Wortman RC, Christie BR. The benefits of exercise on structural and functional plasticity in the rodent hippocampus of different disease models. *Brain Plast Amst Neth*. 2015;1:97–127.
165. Voss MW, Vivar C, Kramer AF, van Praag H. Bridging animal and human models of exercise-induced brain plasticity. *Trends Cogn Sci*. 2013;17:525–44.
166. Creer DJ, Romberg C, Saksida LM, van Praag H, Bussey TJ. Running enhances spatial pattern separation in mice. *Proc Natl Acad Sci USA*. 2010;107:2367–72.
167. Bolz L, Heigle S, Bischofberger J. Running improves pattern separation during novel object recognition. *Brain Plast Amst Neth*. 2015;1:129–41.
168. Horowitz AM, Fan X, Bieri G, Smith LK, Sanchez-Diaz CI, Schroer AB, et al. Blood factors transfer beneficial effects of exercise on neurogenesis and cognition to the aged brain. *Science*. 2020;369:167–73.
169. Insel TR. The NIMH Research Domain Criteria (RDoC) Project: precision medicine for psychiatry. *Am J Psychiatry*. 2014;171:395–7.
170. Planchez B, Surget A, Belzung C. Animal models of major depression: drawbacks and challenges. *J Neural Transm Vienna Austria*. 1996. 2019;126:1383–408.
171. Bigot M, Vicq E, Lledo P-M, Alonso M, Henry C. Assessing positive and negative valence systems to refine animal models of bipolar disorders: the example of GBR 12909-induced manic phenotype. *Sci Rep*. 2022;12:7364.
172. Shemesh Y, Chen A. A paradigm shift in translational psychiatry through rodent neuroethology. *Mol Psychiatry*. 2023. <https://doi.org/10.1038/s41380-022-01913-z>.
173. Willner P, Belzung C. Treatment-resistant depression: are animal models of depression fit for purpose? *Psychopharmacology (Berl)*. 2015;232:3473–95.
174. Yin R, Zhang K, Li Y, Tang Z, Zheng R, Ma Y, et al. Lipopolysaccharide-induced depression-like model in mice: meta-analysis and systematic evaluation. *Front Immunol*. 2023;14:1181973.
175. Bourhy L, Mazeraud A, Costa LHA, Levy J, Rei D, Hecquet E, et al. Silencing of amygdala circuits during sepsis prevents the development of anxiety-related behaviours. *Brain*. 2022;145:1391–409.
176. Manganas LN, Zhang X, Li Y, Hazel RD, Smith SD, Wagshul ME, et al. Magnetic resonance spectroscopy identifies neural progenitor cells in the live human brain. *Science*. 2007;318:980–5.
177. Borsini A, Pariante CM, Zunszain PA, Heggul N, Russell A, Zajkowska Z, et al. The role of circulatory systemic environment in predicting interferon-alpha-induced depression: The neurogenic process as a potential mechanism. *Brain Behav Immun*. 2019;81:220–7.
178. Mertens J, Wang Q-W, Kim Y, Yu DX, Pham S, Yang B, et al. Differential responses to lithium in hyperexcitable neurons from patients with bipolar disorder. *Nature*. 2015;527:95–99.
179. Jagot F, Gaston-Breton R, Choi AJ, Pascal M, Bourhy L, Dorado-Doncel R, et al. The parabrachial nucleus elicits a vigorous corticosterone feedback response to the pro-inflammatory cytokine IL-1 $\beta$ . *Neuron*. 2023;111:2367–82.e6.
180. Brill MS, Ninkovic J, Winkpeny E, Hodge RD, Ozen I, Yang R, et al. Adult generation of glutamatergic olfactory bulb interneurons. *Nat Neurosci*. 2009;12:1524–33.
181. Cameron HA, McKay RD. Adult neurogenesis produces a large pool of new granule cells in the dentate gyrus. *J Comp Neurol*. 2001;435:406–17.
182. Bartkowska K, Turlejski K, Koguc-Sobolewska P, Djavadian R. Adult neurogenesis in the mammalian hypothalamus: impact of newly generated neurons on hypothalamic function. *Neuroscience*. 2023;515:83–92.
183. Jurkowski MP, Bettio L, K Woo E, Patten A, Yau S-Y, Gil-Mohapel J. Beyond the hippocampus and the SVZ: adult neurogenesis throughout the brain. *Front Cell Neurosci*. 2020;14:576444.
184. Lledo P, Alonso M, Grubb M. Adult neurogenesis and functional plasticity in neuronal circuits. *Nat Rev Neurosci*. 2006;7:179–93.
185. Touchant M, Labonté B. Sex-specific brain transcriptional signatures in human MDD and their correlates in mouse models of depression. *Front Behav Neurosci*. 2022;16. Retrieved July 5, 2023, from <https://www.frontiersin.org/articles/10.3389/fnbeh.2022.845491>.
186. Gutiérrez-Lobos K, Scherer M, Anderer P, Katschnig H. The influence of age on the female/male ratio of treated incidence rates in depression. *BMC Psychiatry*. 2002;2:3.
187. Mahmoud R, Wainwright SR, Galea LAM. Sex hormones and adult hippocampal neurogenesis: Regulation, implications, and potential mechanisms. *Front Neuroendocrinol*. 2016;41:129–52.
188. Tanapat P, Hastings NB, Reeves AJ, Gould E. Estrogen stimulates a transient increase in the number of new neurons in the dentate gyrus of the adult female rat. *J Neurosci J Soc Neurosci*. 1999;19:5792–801.

189. Spritzer MD, Galea LAM. Testosterone and dihydrotestosterone, but not estradiol, enhance survival of new hippocampal neurons in adult male rats. *Dev Neurobiol.* 2007;67:1321–33.
190. Reif A, Fritzen S, Finger M, Strobel A, Lauer M, Schmitt A, et al. Neural stem cell proliferation is decreased in schizophrenia, but not in depression. *Mol Psychiatry.* 2006;11:514522.
191. Lucassen PJ, Stumpel MW, Wang Q, Aronica, E. Decreased numbers of progenitor cells but no response to antidepressant drugs in the hippocampus of elderly depressed patients. *Neuropharmacol.* 2010;58:940–9.
192. Bayer R, Franke H, Ficker C, Richter M, Lessig R, Buttner A, et al. Alterations of neuronal precursor cells in stages of human adult neurogenesis in heroin addicts. *Drug and Alcohol Dependence.* 2015;156:139–49.
193. Allen KM, Fung SJ, Weickert CS. Cell proliferation is reduced in the hippocampus in schizophrenia. *The Australian and New Zealand Journal of Psychiatry.* 2016;50:473–80.
194. Le Maitre TW, Dhanabalan G, Bogdanovic N, Alkass K, Druid H. Effects of alcohol abuse on proliferating cells, stem/progenitor cells, and immature neurons in the adult human hippocampus. *Neuropharmacol.* 2018;43:690–99.

## ACKNOWLEDGEMENTS

Our work was supported by the life insurance company “AG2R-La-Mondiale”, the Agence Nationale de la Recherche (ANR 21 CE15-003-02 “BRAINITY”, ANR 21 CE37 0030 02 “EMOKET”) and the Laboratoire d’Excellence Revive (Investissement d’Avenir, ANR-10-LABX-73). A.-C.P. is a recipient of interface contract fellowship from the Pasteur Institute.

## AUTHOR CONTRIBUTIONS

All authors have written and proofread the review.

## COMPETING INTERESTS

The authors declare no competing interests.

## ADDITIONAL INFORMATION

**Correspondence** and requests for materials should be addressed to Pierre-Marie Lledo.

**Reprints and permission information** is available at <http://www.nature.com/reprints>

**Publisher’s note** Springer Nature remains neutral with regard to jurisdictional claims in published maps and institutional affiliations.



**Open Access** This article is licensed under a Creative Commons Attribution 4.0 International License, which permits use, sharing, adaptation, distribution and reproduction in any medium or format, as long as you give appropriate credit to the original author(s) and the source, provide a link to the Creative Commons licence, and indicate if changes were made. The images or other third party material in this article are included in the article’s Creative Commons licence, unless indicated otherwise in a credit line to the material. If material is not included in the article’s Creative Commons licence and your intended use is not permitted by statutory regulation or exceeds the permitted use, you will need to obtain permission directly from the copyright holder. To view a copy of this licence, visit <http://creativecommons.org/licenses/by/4.0/>.

© The Author(s) 2024