



HAL
open science

Changing Contact Patterns Over Disease Progression: Nipah Virus as a Case Study

Kyu Han Lee, Birgit Nikolay, Hossain Sazzad, M Jahangir Hossain, A Khan,
Mahmudur Rahman, Syed Moinuddin Satter, Stuart Nichol, John Klena,
Juliet Pulliam, et al.

► **To cite this version:**

Kyu Han Lee, Birgit Nikolay, Hossain Sazzad, M Jahangir Hossain, A Khan, et al.. Changing Contact Patterns Over Disease Progression: Nipah Virus as a Case Study. *Journal of Infectious Diseases*, 2020, 222 (3), pp.438-442. 10.1093/infdis/jiaa091 . pasteur-04095367

HAL Id: pasteur-04095367

<https://pasteur.hal.science/pasteur-04095367v1>

Submitted on 6 Sep 2024

HAL is a multi-disciplinary open access archive for the deposit and dissemination of scientific research documents, whether they are published or not. The documents may come from teaching and research institutions in France or abroad, or from public or private research centers.

L'archive ouverte pluridisciplinaire **HAL**, est destinée au dépôt et à la diffusion de documents scientifiques de niveau recherche, publiés ou non, émanant des établissements d'enseignement et de recherche français ou étrangers, des laboratoires publics ou privés.



Distributed under a Creative Commons Attribution - NonCommercial 4.0 International License

Changing contact patterns over disease progression: Nipah virus as a case study

Kyu Han Lee¹, Birgit Nikolay², Hossain M.S. Sazzad^{3,4}, M. Jahangir Hossain^{3,5}, A. K. M Dawlat Khan³, Mahmudur Rahman^{3,6}, Syed Moinuddin Satter³, Stuart T. Nichol⁷, John D. Klena⁷, Juliet R. C. Pulliam⁸, A. Marm Kilpatrick⁹, Sharmin Sultana⁶, Sayma Afroj³, Peter Daszak¹⁰, Stephen Luby¹¹, Simon Cauchemez², Henrik Salje², Emily Gurley¹

¹Department of Epidemiology, Johns Hopkins Bloomberg School of Public Health, Baltimore, MD, USA

²Mathematical Modelling Infectious Diseases, Institut Pasteur, Paris, France

³Infectious Disease Division, icddr,b, Dhaka, Bangladesh

⁴Kirby Institute, University of New South Wales, Sydney, Australia

⁵Medical Research Council Unit The Gambia at the London School of Hygiene and Tropical Medicine, Banjul, The Gambia

⁶Institute of Epidemiology Disease Control and Research, Dhaka, Bangladesh

⁷Viral Special Pathogens Branch, Division of High Consequence Pathogens and Pathology, Centers for Disease Control and Prevention, Atlanta, GA, USA

⁸Stellenbosch University, Stellenbosch, South Africa

⁹Department of Ecology and Evolutionary Biology, University of California, Santa Cruz, CA, USA

¹⁰EcoHealth Alliance, New York, NY, USA

¹¹Division of Infectious Diseases and Geographic Medicine, Stanford University, Stanford, CA, USA

Summary: We examined whether contact patterns change as disease progresses. For Nipah virus case-patients identified between 2010-2014 in Bangladesh, the number of contacts increased with disease severity and, for case-patients who died, peaked on the day of death.

Accepted Manuscript

ABSTRACT

Contact patterns play a key role in disease transmission, and variation in contacts during the course of illness can influence transmission, particularly when accompanied by changes in host infectiousness. We used surveys among 1,642 contacts of 94 Nipah case-patients in Bangladesh to determine how contact patterns (physical and with bodily fluids) changed as disease progressed in severity. The number of contacts increased with severity and, for case-patients who died, peaked on the day of death. Given transmission has only been observed among fatal Nipah cases, our findings suggest changes in contact patterns during illness contribute to risk of infection.

Keywords: Nipah virus, infectious disease transmission, social behavior

Accepted Manuscript

BACKGROUND

Contact patterns play a key role in disease transmission. Understanding the determinants of contact patterns can be important in identifying targets for interventions. For example, during the 2009 H1N1 influenza pandemic, residents of Hong Kong with greater anxiety of infection were more likely to practice social distancing [1], a strategy associated with reduced risk [2]. Cultural and social norms can also affect contact patterns. In Bangladesh, female relatives are often responsible for providing hands-on care during illness [3], and this may contribute to the higher risk of Nipah virus infection observed among female spouses, compared to other family members [4].

Few studies have explored whether contact patterns change during the illness period. In a study conducted among university students in the US, onset of influenza symptoms was associated with reduced contact durations, but not with contact frequency [5]. For more lethal diseases, the changing needs of the patient or social norms towards the end of life may alter the type and frequency of contacts as disease becomes more severe [3]. For certain pathogens such as Nipah virus, influenza virus and Ebola virus, more severe symptoms are also accompanied by changes in host infectiousness, as indicated by greater secretion of body fluids or higher viral loads [3,6,7].

Outbreaks of Nipah virus occur almost every year in Bangladesh and person-to-person transmission has been reported in Bangladesh, India and the Philippines [4,8,9]. Person-to-person transmission can occur through exposure to bodily fluids [4], even after death [10]. Infection control practices in Bangladeshi healthcare facilities are generally poor [11] and most hands-on care is provided by family members rather than healthcare staff [3]. Cases are rarely diagnosed before death or recovery, limiting opportunities to prevent transmission. Clinical symptoms begin with fever, headache, and/or cough, progressing to altered mental status, respiratory difficulty, convulsions and/or coma [12]. Approximately

70% of cases result in death [13]. In this study, we used previously collected data to examine how contact patterns changed as disease progressed in severity for Nipah virus case-patients.

METHODS

Subjects

Full details regarding case and contact investigations were previously published [4]. In short, systematic investigations of Nipah cases in Bangladesh between December 2010 and April 2014 identified 96 Nipah case-patients, including 19 secondary cases; these cases and their contacts or proxies were interviewed to quantify daily exposures (38 types) between the illness onset and up to 15 days thereafter, including exposures during burial. A physical contact was defined as an individual who had at least one exposure type involving a physical interaction with a case-patient. A fluid contact was defined as an individual who had at least one exposure type involving bodily fluids. Two case-patients were excluded from this analysis due to missing dates of illness.

Measures of Disease Severity

We approached disease severity using two separate strategies; the first was by illness stage. We defined illness onset as the day on which case-patients developed a fever. The febrile stage began on the day of illness onset and lasted until the case-patient developed one or more signs of severe illness including difficulty breathing, altered mental status and/or convulsions; 9 patients did not develop a sign of severe illness and only contributed to febrile illness. The severe stage was defined as the onset of one or more severe signs and ended on the day of death, hospital discharge, or when signs were resolved. Seventy-seven case-patients (82%) had contact data covering their entire illness period, including 697 of 747 total

person-days of illness (93%): 365 during febrile illness, 261 during severe illness and 71 on the day of death (Supplementary Figure 1).

Our second approach involved describing contacts on the day of death and by each day preceding death for the 80 case-patients who died. Time was considered a proxy of severity, where days closer to death represented more severe illness.

Statistical Analysis

In our first approach, we explored the relationship between illness stage and contacts using generalized linear mixed effects models with Poisson distributions and log link functions. We included stage as a fixed effect, and included case-patient sex, continuous case-patient age, daily hospitalization status and continuous year as fixed effects and case-patient as a random effect. Further, we estimated the mean number of contacts by day of febrile illness to explore whether contact patterns might vary for pathogens that cause milder forms of disease.

In our second approach, we examined the relationship between time to death and contacts using generalized additive models with a thin plate regression spline to fit a nonlinear function to days until death and included the same additional fixed and random effects as the illness stage model. We also estimated the number of daily contacts, stratified by sex of case-patients and contacts, to explore whether the sex of case-patients was related to the sex of contacts.

To examine the relative contributions of healthcare staff, we estimated the proportion of contacts contributed by healthcare staff by illness stage. We reran our models after excluding all healthcare staff to explore whether associations with disease severity were influenced by healthcare services. We excluded data from the first year for these analyses since questions about profession were not included until December 2011.

Ethical Considerations

Written informed consent was obtained from Nipah virus case-patients, contacts, or proxy respondents and/or guardians. Protocols were approved by the Government of Bangladesh and the icddr,b human subjects review committee.

RESULTS

Among 94 case-patients included in this analysis, 85 (90%) developed severe illness and 87 (93%) were hospitalized, including 84 of 85 (99%) case-patients who developed severe illness (Table 1). Eighty case-patients (85%) died. Median durations of febrile and severe illness were 3 days (interquartile range (IQR): 2-5) and 2 days (IQR: 1-4), respectively. A total of 1,642 individuals reported one or more physical or fluid interactions with case-patients.

Contact Rates by Illness Stage

There were no significant changes in physical nor fluid contacts during the first seven days of febrile illness (Supplementary Figure 2). Compared to febrile illness, the adjusted number of daily physical contacts was significantly higher during severe illness (rate ratio (RR): 1.25, 95% CI: 1.14-1.38) and on the day of death (RR: 1.38, 95% CI: 1.21-1.57) (Figure 1A, Supplementary Table 1). Differences were more pronounced for fluid contacts during severe illness (RR: 2.23, 95% CI: 1.84-2.70) and the day of death (RR: 2.31, 95% CI: 1.80-2.96). Hospitalization was associated with significantly higher physical (RR: 1.26, 95% CI: 1.14-1.39) and fluid contacts (RR: 1.36, 95% CI: 1.13-1.63). Female case-patients had fewer physical (RR: 0.73, 95% CI: 0.58-0.93) and fluid contacts (RR: 0.70, 95% CI: 0.53-0.94) compared to males.

Contact Rates by Day Relative to Death

Among case-patients who died, the number of daily physical and fluid contacts increased during the week before death (Figure 1B). We estimated that, on average, a male case-patient in 2010-2011 of mean age (23 years), who was not hospitalized, had 6.8 physical contacts (95% CI: 6.4-7.3) 6 days before death, 7.8 contacts (95% CI: 7.5-8.1) 3 days before death and 9.6 contacts (95% CI: 8.7-10.5) on the day of death.

We estimated an average of 1.5 fluid contacts (95% CI: 1.3-1.7) 6 days before death, 2.3 contacts (95% CI: 2.1-2.5) 3 days before death and 3.3 contacts (95% CI: 2.8-3.9) on the day of death. Similar to results from our illness stage models, the number of daily contacts was significantly higher on days when case-patients were hospitalized for both physical (RR: 1.27, 95% CI: 1.14-1.41) and fluid contacts (RR: 1.53, 95% CI: 1.26-1.86) (Supplementary Table 2).

Female case-patients had more female than male contacts at the end of life and male case-patients had more male than female contacts on the day of death (Supplementary Figure 3).

Contacts with Healthcare Staff

Healthcare staff accounted for 24% of all physical and 21% of all fluid contacts. During severe illness, healthcare staff accounted for 39% of all physical contacts, compared to 5% during febrile illness and 18% on the day of death (χ^2 , $p < 0.01$). We also observed significant differences between fluid contacts with healthcare staff by stages (febrile: 2%, severe: 29%, death: 8%; χ^2 , $p < 0.01$).

Contacts remained positively associated with severe illness and days before death even after excluding healthcare staff (Supplementary Table 3, Supplementary Table 4, Supplementary Figure 4).

DISCUSSION

Both physical and fluid contacts with Nipah virus case-patients increased during severe illness, peaking on the day of death. This pattern was likely mediated by social practices. Family members and close friends of Nipah patients often visited them when they were severely ill to make direct contact to signify the patient's importance [3]; sex selectivity among contacts provides further evidence of these patterns being driven by the social context. Further, individuals involved in cleaning the body of the deceased in preparation for burial also increased the number of contacts on the day of death [3]; the sex of these contacts also matched the sex of the case-patient, per common Muslim burial practices [14]. Given transmission has only been observed among fatal Nipah virus cases [13], our findings suggest this variation in contact patterns during illness may contribute to transmission risk, with synergistic effects from increased secretion of body fluids during severe illness [3]. Previously published analyses from this data set showed increased risk of infection following exposure to bodily fluids and found exposure windows were often 4-6 days after illness onset [4], when severe signs of disease manifested.

The increase in contacts with disease severity has important implications for controlling onward spread of infection. Although we used Nipah in Bangladesh as a case study, it is likely that this relationship would hold true for other diseases where increasing severity necessitates increasing contact for caregiving or desire to provide emotional support. Healthcare seeking behavior played a smaller role in Nipah contact patterns compared to disease severity in this study; however, due to differences in healthcare seeking and hospital contact, healthcare seeking could be a more important factor in other contexts. A considerable portion of contacts during severe illness are due to healthcare staff (39%). Historically, healthcare staff have rarely been infected during Nipah outbreaks [4]; however,

risk of infection may increase as healthcare systems in Bangladesh develop away from family-oriented caregiving and towards healthcare staff providing more direct patient care [4]. Healthcare facilities remain a key target for public health interventions, to prevent infections for staff and family caregivers.

The high number of contacts observed on the day of death is particularly worrisome for pathogens with the potential for post-mortem transmission, such as Nipah virus [10] and Ebola virus [15]. During the 2013 Ebola outbreak, traditional burial practices, which involved touching and washing of the deceased played a major role in transmission [15]. We did not find any significant changes in contact frequency over time during the febrile illness stage, before the development of severe signs.

Our study had several limitations. First, contact surveys were conducted weeks after illness (median: 87 days, IQR: 59-117 days), since contacts were also screened for seroconversion at the same time. This could contribute to recall bias if contacts are more likely to remember events towards the end of the illness period, which could explain more contacts reported at the end of illness. However, given that contacts changed even within just the last 72 hours of illness, it seems unlikely that these small differences in recall periods would be responsible for the patterns we observed. Second, 7% of all illness days had missing contact data and, as contacts were collected only for the first 15 days of illness, most missing data were from case-patients with longer illness periods. Surveys that place emphasis towards the end of illness may be valuable for diseases that cause severe illness, especially if host infectiousness is greatest during this period.

In conclusion, our findings show that contact patterns can vary as disease progresses in severity and should be taken into account in transmission models for diseases where severe presentations are common. Given the increasing contacts occurring during severe illness,

effective interventions to prevent Nipah transmission should be targeted at this illness stage, particularly in hospital settings.

Accepted Manuscript

ACKNOWLEDGEMENTS

We are grateful for the study participants and the Nipah virus surveillance team that collected the original contact data. We thank Stephen Lauer for providing support on generalized additive models.

NOTES

Presented in part: Epidemics⁷ – International Conference on Infectious Disease Dynamics, Charleston, South Carolina, 3-6 December 2019.

Financial support. Funding for the original data collection was provided by grant 2R01-TW005869 from the National Institutes of Health, the US Centers for Disease Control and Prevention, and core or unrestricted support from the governments of Bangladesh, Canada, Sweden, and the United Kingdom.

Potential conflicts of interest. All authors: No reported conflicts of interest. All authors have submitted the ICMJE Form for Disclosure of Potential Conflicts of Interest. Conflicts that the editors consider relevant to the content of the manuscript have been disclosed.

Corresponding author. Dr. Emily Gurley, 615 N. Wolfe Street, Department of Epidemiology, Johns Hopkins Bloomberg School of Public Health, Baltimore, MD 21205; Tel. (+1) 410-502-8916; Email: egurley1@jhu.edu.

REFERENCES

1. Cowling BJ, Ng DMW, Ip DKM, et al. Community psychological and behavioral responses through the first wave of the 2009 influenza A(H1N1) pandemic in Hong Kong. *J Infect Dis.* **2010**; 202(6):867–876.
2. Ahmed F, Zviedrite N, Uzicanin A. Effectiveness of workplace social distancing measures in reducing influenza transmission: a systematic review. *BMC Public Health.* **2018**; 18(518).
3. Blum LS, Khan R, Nahar N, Breiman RF. In-Depth Assessment of an Outbreak of Nipah Encephalitis with Person-to-Person Transmission in Bangladesh: Implications for Prevention and Control Strategies. *The American Journal of Tropical Medicine and Hygiene.* **2009**; 80(1):96–102.
4. Nikolay B, Salje H, Hossain MJ, et al. Transmission of Nipah Virus — 14 Years of Investigations in Bangladesh. *New England Journal of Medicine.* **2019**; 380(19):1804–1814.
5. Poletti P, Visintainer R, Lepri B, Merler S. The interplay between individual social behavior and clinical symptoms in small clustered groups. *BMC Infectious Diseases.* **2017**; 17(1):521.
6. Lau LLH, Cowling BJ, Fang VJ, et al. Viral Shedding and Clinical Illness in Naturally Acquired Influenza Virus Infections. *J Infect Dis.* **2010**; 201(10):1509–1516.
7. Malvy D, McElroy AK, Clerck H de, Günther S, Griensven J van. Ebola virus disease. *The Lancet.* **2019**; 393(10174):936–948.
8. Arunkumar G, Chandni R, Mourya DT, et al. Outbreak Investigation of Nipah Virus Disease in Kerala, India, 2018. *J Infect Dis.* **2019**; 219(12):1867–1878.
9. Ching PKG, Reyes VC de los, Sucaldito MN, et al. Outbreak of Henipavirus Infection, Philippines, 2014. *Emerging Infectious Diseases.* 21(2):328–331.
10. Sazzad HMS, Hossain MJ, Gurley ES, et al. Nipah virus infection outbreak with nosocomial and corpse-to-human transmission, Bangladesh. *Emerging Infect Dis.* **2013**; 19(2):210–217.
11. Horng LM, Unicomb L, Alam M-U, et al. Healthcare worker and family caregiver hand hygiene in Bangladeshi healthcare facilities: results from the Bangladesh National Hygiene Baseline Survey. *J Hosp Infect.* **2016**; 94(3):286–294.
12. Hossain MJ, Gurley ES, Montgomery JM, et al. Clinical presentation of nipah virus infection in Bangladesh. *Clin Infect Dis.* **2008**; 46(7):977–984.
13. Luby SP, Hossain MJ, Gurley ES, et al. Recurrent Zoonotic Transmission of Nipah Virus into Humans, Bangladesh, 2001–2007. *Emerg Infect Dis.* **2009**; 15(8):1229–1235.
14. Sarhill N, LeGrand S, Islambouli R, Davis MP, Walsh D. The terminally ill Muslim: death and dying from the Muslim perspective. *Am J Hosp Palliat Care.* **2001**; 18(4):251–255.

15. Nielsen CF, Kidd S, Sillah ARM, Davis E, Mermin J, Kilmarx PH. Improving Burial Practices and Cemetery Management During an Ebola Virus Disease Epidemic — Sierra Leone, 2014. *MMWR Morb Mortal Wkly Rep.* **2015**; 64(1):20–27.

Accepted Manuscript

FIGURE LEGEND

Figure 1. Relationship between contacts and disease severity among Nipah case-patients identified in Bangladesh, 2010-2014. A) Rate ratios and 95% confidence intervals by illness stage, relative to febrile illness, among all 94 Nipah case-patients regardless of outcome, after adjusting for age, sex, year and daily hospitalization status. B) Mean number of daily contacts by days before death among all 80 Nipah case-patients that died. Points and error bars represent unadjusted values and 95% confidence intervals. Shaded areas represent adjusted values with 95% confidence intervals for a male case-patient in 2010-2011 of mean age, who was not hospitalized.

TABLE LEGEND

Table 1. Characteristics of Nipah Virus Case-Patients and Person-Days of Illness, Bangladesh, 2010-2014.

Accepted Manuscript

Table 1. Characteristics of Nipah Virus Case-Patients and Person-Days of Illness, Bangladesh, 2010-2014.

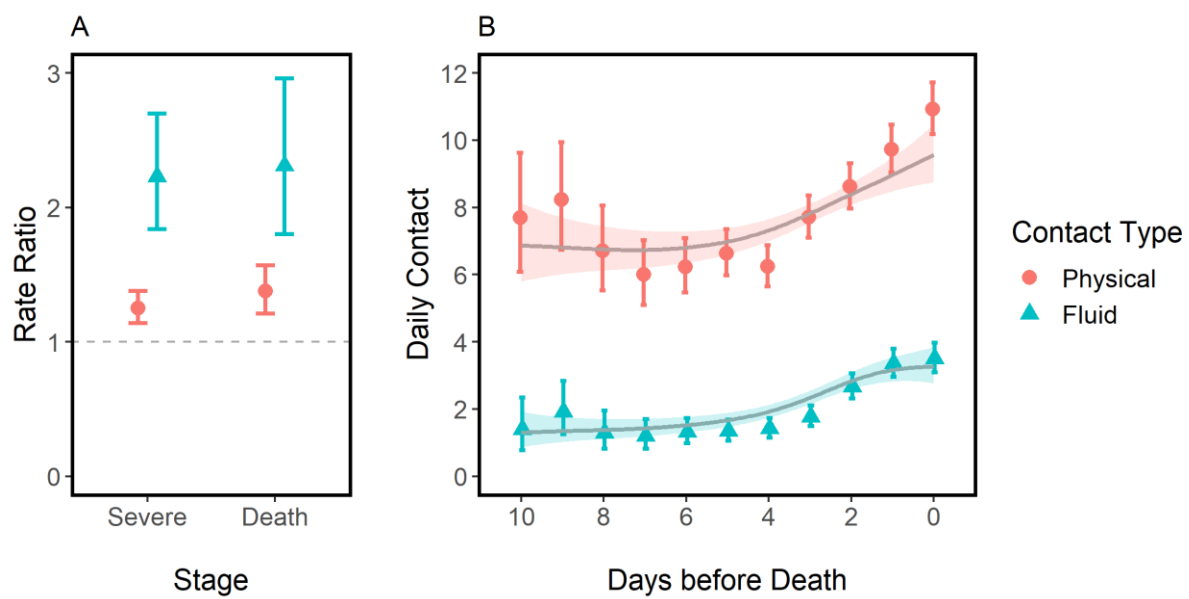
Case Characteristic	Case-patients (N=94)	Daily Physical Contacts (95% CI)	Daily Fluid Contacts (95% CI)
All		7.2 (7.0, 7.4)	2.0 (1.9, 2.1)
Age (years)			
≤14	38 (40%)	7.2 (6.9, 7.5)	2.3 (2.1, 2.5)
15 to 29	21 (22%)	6.8 (6.4, 7.2)	1.4 (1.3, 1.6)
30 to 44	23 (24%)	7.9 (7.5, 8.4)	2.2 (1.9, 2.4)
≥45	12 (13%)	7.1 (6.5, 7.7)	1.9 (1.6, 2.2)
Sex			
Male	65 (69%)	8.0 (7.7, 8.2)	2.2 (2.1, 2.4)
Female	29 (31%)	5.8 (5.4, 6.1)	1.6 (1.4, 1.8)
Year (December to April)			
2010-2011	38 (40%)	7.8 (7.5, 8.2)	2.4 (2.2, 2.6)
2011-2012	15 (16%)	7.3 (6.8, 7.8)	1.4 (1.2, 1.7)
2012-2013	25 (27%)	7.0 (6.6, 7.4)	2.3 (2.1, 2.5)
2013-2014	16 (17%)	6.4 (6.0, 6.9)	1.3 (1.1, 1.5)
Person-day Characteristic	Person-days of illness (N=697)	Daily Physical Contacts (95% CI)	Daily Fluid Contact (95 CI%)
Stage			
Febrile	365 (52%)	5.6 (5.3, 5.8)	0.9 (0.8, 1.0)

Severe	261 (37%)	8.5 (8.2, 8.9)	3.1 (2.9, 3.3)
Day of death	71 (10%)	10.9 (10.2, 11.7)	3.5 (3.0, 4.0)
Hospitalized			
Yes	260 (37%)	9.2 (8.8, 9.6)	3.4 (3.2, 3.6)
No	437 (63%)	6.1 (5.8, 6.3)	1.2 (1.1, 1.3)

Abbreviations: CI, exact Poisson 95% confidence interval

Accepted Manuscript

Figure 1



Accepted Manuscript