



HAL
open science

Pollen/Fruit Syndrome: Clinical Relevance of the Cypress Pollen Allergenic Gibberellin-Regulated Protein

Hélène Sénéchal, Sanaz Keykhosravi, Rémy Couderc, Marie-Ange Selva, Youcef Shahali, Tomoyasu Aizawa, Jean-Marc Busnel, Rihane Arif, Inna Mercier, Nhan Pham-Thi, et al.

► To cite this version:

Hélène Sénéchal, Sanaz Keykhosravi, Rémy Couderc, Marie-Ange Selva, Youcef Shahali, et al.. Pollen/Fruit Syndrome: Clinical Relevance of the Cypress Pollen Allergenic Gibberellin-Regulated Protein. *Allergy, Asthma & Immunology Research*, 2019, 11 (1), pp.143-151. 10.4168/aair.2019.11.1.143 . pasteur-03718423

HAL Id: pasteur-03718423

<https://pasteur.hal.science/pasteur-03718423>

Submitted on 8 Jul 2022

HAL is a multi-disciplinary open access archive for the deposit and dissemination of scientific research documents, whether they are published or not. The documents may come from teaching and research institutions in France or abroad, or from public or private research centers.

L'archive ouverte pluridisciplinaire **HAL**, est destinée au dépôt et à la diffusion de documents scientifiques de niveau recherche, publiés ou non, émanant des établissements d'enseignement et de recherche français ou étrangers, des laboratoires publics ou privés.



Distributed under a Creative Commons Attribution - NonCommercial 4.0 International License

Brief Communication



Pollen/Fruit Syndrome: Clinical Relevance of the Cypress Pollen Allergenic Gibberellin-Regulated Protein

Hélène Sénéchal,¹ Sanaz Keykhosravi,^{1,2} Rémy Couderc,³ Marie-Ange Selva,³ Youcef Shahali ,⁴ Tomoyasu Aizawa ,⁵ Jean-Marc Busnel,⁶ Rihane Arif,⁶ Inna Mercier,⁷ Nhan Pham-Thi,⁷ Denis-André Charpin,⁸ Pascal Poncet ^{1,9*}

OPEN ACCESS

Received: Jul 12, 2018
Revised: Sep 4, 2018
Accepted: Sep 5, 2018

Correspondence to Pascal Poncet, PhD

C2RT Department, Pasteur Institute, Center of Resources and Technological Research, 25-28 rue du Dr Roux, Paris 75015, France.
Tel: +33-140-613-028
E-mail: pascal.poncet@pasteur.fr

Copyright © 2019 The Korean Academy of Asthma, Allergy and Clinical Immunology · The Korean Academy of Pediatric Allergy and Respiratory Disease
This is an Open Access article distributed under the terms of the Creative Commons Attribution Non-Commercial License (<https://creativecommons.org/licenses/by-nc/4.0/>) which permits unrestricted non-commercial use, distribution, and reproduction in any medium, provided the original work is properly cited.

ORCID iDs

Youcef Shahali
<https://orcid.org/0000-0003-3188-4374>
Tomoyasu Aizawa
<https://orcid.org/0000-0001-9134-7576>
Pascal Poncet
<https://orcid.org/0000-0003-0757-5424>

Disclosure

There are no financial or other issues that might lead to conflict of interest.

¹Department of Biochemistry, Armand Trousseau Children Hospital, APHP, A&E Research Team, Paris, France
²Paris-Sud Analytical Chemistry Group, Paris-Sud University, Orsay, France
³Department of Biochemistry, Armand Trousseau Children Hospital, APHP, Paris, France
⁴Razi Vaccine and Serum Research Institute, Agricultural Research, Education and Extension Organization, Karaj, Iran
⁵Global Institution for Collaborative Research and Education, Protein Science Laboratory, Hokkaido University, Sapporo, Japan
⁶Beckman Coulter, Life Sciences Research, Marseille, France
⁷Department of Allergology, Pasteur Institute Medical Center, Paris, France
⁸Department of Pneumonology and Allergy, La Timone Hospital, APHM, Aix-Marseille University, Marseille, France
⁹Pasteur Institute, Center of Resources and Technological Research, Paris, France

ABSTRACT

A pollen/food-associated syndrome (PFAS) has been described between peach and cypress pollen. Cross-reactive allergens were characterized which belong to the Gibberellin-regulated protein (GRP) family, BP14 in cypress pollen and Pru p 7 in peach. GRP are small cationic protein with anti-microbial properties. A patient suffering from a peach/cypress syndrome was explored clinically and biologically using 2 types of immunoglobulin E (IgE) multiarray microchip, immunoblots and a basophil activation test to assess the clinical relevance of various extracts and purified allergens from fruits or cypress pollen. In addition to PR10 sensitization, the patient showed specific IgE to Pru p 7, BP14 and allergen from pomegranate. These last 3 allergens and allergenic sources are able to induce *ex vivo* basophil activation characterized by the monitoring of the expression of CD63 and CD203c, both cell surface markers correlated with a basophil mediator release. Up to 100% of cells expressed CD203c at 50 ng/mL of BP14 protein. In contrast, snakin-1, a GRP from potato sharing 82% sequence identity with Pru p 7 did not activate patient's basophils. These results strongly suggest that, like Pru p 7, BP14 is a clinically relevant allergenic GRP from pollen. Allergen members of this newly described protein family are good candidates for PFAS where no cross-reactive allergens have been characterized.

Keywords: Cypress; pollen; peach; pomegranate; allergen; basophil

INTRODUCTION

With no exception in the field of allergy, cases of pollen/food-associated syndromes (PFAS) are increasing. Between 20% to 40% of pollen-sensitized patients are also sensitized to fruits worldwide, with peach, apple and kiwi in the top 3 fruits.¹ Many efforts have been put on the study of the birch/apple syndrome,² but few data are reported on the cypress/peach syndrome.³ Recently, we have shown that immunoglobulin E (IgE) cross reactivity between peach and Italian cypress (*Cupressus sempervirens*, Cups) pollen is borne by members of the Gibberellin-regulated protein (GRP) family present in both allergenic sources, BP14 in cypress pollen and Pru p 7 in peach.⁴ GRPs are small cationic proteins, expressed in plant in response to a biotic or abiotic stress.⁵ They exhibit anti-microbial properties,⁶ and 4 allergens from this protein family are characterized in fruit (peach, orange, pomegranate and Japanese apricot) and 1 in pollen (Cups pollen).

To assess the clinical relevance of cross-sensitization to BP14 and Pru p 7, the case of a patient suffering since childhood from cypress pollen allergy and also food allergy to fruits including peach and pomegranate was thoroughly explored clinically (anamnesis and skin prick test [SPT]) and biologically using not only conventional diagnostic techniques to study the serum IgE specificities (single and multi-arrays) but also immunoprints and a basophil activation test (BAT) with total allergenic sources extracts and purified allergens.

MATERIALS AND METHODS

Cypress pollen and fruit protein extractions

Cups pollen grains (10%, w:v) (Allergon AB, Ängelholm, Sweden) were incubated overnight in phosphate buffer saline (PBS) pH 7.4 at 4°C by rotation. After centrifugation (18,000 g, 4°C, 20 minutes), the supernatant was dialyzed against distilled water and lyophilized. The lyophilized extract was dissolved in distilled water and stored as aliquots at -20°C until use.

Peach, grapefruit, orange and pomegranate were purchased in market. The peach was prepared by crushing the fruit peel. The grapefruit and orange pulps were deprived of juice by pressing and the remaining insoluble part used for protein extraction. The pulp pomegranate was prepared after removal of the seed. These 4 preparations were then submitted to protein extraction using a multidimensional grinder FastPrep-24 (MP-Biomedicals, Illkirch-Graffenstaden, France), for 40 seconds at 4°C at 6 m/sec using matrix C (1 mm diameter silica beads) in presence of PBS. After centrifugation (18,000 g at 4°C, 20 minutes) supernatants were collected and stored as aliquots at -20°C until use.

Native and recombinant proteins

Recombinant snakin-1 and peamaclein

Recombinant snakin-1 and peamaclein were prepared in *Pichia pastoris* and purified essentially as described in Kuddus *et al.*⁶ Briefly, after induction phase, yeast pellet and supernatant were separated by centrifugation (14,000 g, 4°C, 30 minutes). The protein containing supernatant was purified on a cation exchange column followed by a RP-HPLC, lyophilized and stored at -30°C.

BP14 from cypress pollen

Pieces of gel containing BP14 were excised from a sodium dodecyl sulfate polyacrylamide gel electrophoresis (SDS-PAGE) 8%–18% where only cypress pollen basic proteins were

run.⁷ The in-gel BP14 was then eluted from the gel with distilled water in a multidimensional grinder MP-Biomedicals FastPrep-24 for 40 seconds at 6 m/sec with 1 mm diameter silica beads. The beads, acrylamide residues and the BP14-protein were then filtered on an ultrafree-MC filter (5 µm; Millipore, Billerica, MA, USA). The filtrate containing BP14 was stored at -20°C. MS/MS experiments were performed on the purified protein which confirms that it is a GRP (data not shown).

Patients and their sera

The cypress pollen and food allergic patient was selected based on clinical symptoms (rhinitis, conjunctivitis and asthma) and SPT using cypress and birch pollen extracts. Sensitization was determined with either individual classical fluorescence enzyme immunoassay (FEIA) (Thermo Fischer Scientific, Villebon, France; Phadia, Uppsala, Sweden) on the ImmunoCAP 2500 apparatus, according to the manufacturer's recommendations with a detection limit set at 0.10 kU/L or using 2 types of IgE multiarray microchips: ISAC (Thermo Fischer Scientific) and FABER (CRDiagnostics SAS, Bullion, France; a partner of P-Friendly Allergen Nano-Bead Array) with a detection limit set at 0.30 ISU-E and 0.10 FIU/mL, respectively. Written informed consent was obtained from the patients.

The serum from a healthy individual (non allergic, non atopic) and sera from atopic patients with other types of allergy were used as negative controls and corresponded to residues from biological analysis laboratories for the diagnosis of allergy. The sera were stored at -20°C until use.

Gel electrophoresis analysis

Proteins were separated in unreduced conditions in 1-dimensional gel electrophoresis (1-DE) SDS-PAGE in a 8%–18% gradient polyacrylamide gel (ExcelGel; GE Healthcare, Uppsala, Sweden) on a flat-bed electrophoretic chamber (Multiphor II; GE Healthcare) at 12°C. Molecular mass (Mr) markers (GE Healthcare, Little Chalfont, UK) ranging from 14.4 to 94 kDa were used as comparative references. Separated proteins were then either electrotransferred onto a 0.2 µm cyanogen bromide activated nitrocellulose (NcA) membrane (Optitran[®]BA-S 83; Schleicher and Schuell, Dassel, Germany) for immunoblotting assays or stained with Coomassie blue or silver nitrate for protein detection.

Cups protein extract was submitted to double one-dimensional gel electrophoresis (D1-DE) with basic proteins (pI 8.5–9.5) previously separated in isoelectric focusing (pH 2–11) and to classical two-dimensional gel electrophoresis (2-DE) according to Shahali *et al.*⁷ Isoelectric point markers (Serva, Heidelberg, Germany) ranging from 4.45 to 9.6 were used as comparative references in first dimension.

Immunoblotting

Immunoblotting was performed as described in Shahali *et al.*⁷ Briefly, NcA membranes, either intact for 2-DE or cut in 2.5-mm wide strips for 1-DE and D1-DE screening, were first incubated with serum (1:10 dilution) followed by alkaline phosphatase-conjugated goat anti-human IgE Fcε-specific antibodies (Sigma-Aldrich, St. Louis, MO, USA) and then substrate. For each immunoblot analysis, no serum and the serum from a healthy individual (non atopic, non allergic) were used as negative controls.

BAT

Ethylenediaminetetraacetic acid anti-coagulated whole blood was mixed with a Research-Use-Only (RUO) dried down antibody panel (Duraclone) specific to CD45, CD3, CRTH2,

CD203c and CD63 in addition to activation buffer (Beckman Coulter, Marseille, France) and considered allergenic sources, further incubated at 37°C for 15 minutes. Extracts and purified proteins were the same as those used for immunoblots. After incubation, red blood cells were lysed using CE-IVD OptiLyse C lysis solution and associated protocol (Beckman Coulter) and further analyzed on a RUO 13-color Cytoflex flow cytometer (Beckman Coulter, Miami, FL, USA). Basophils were gated as CD45+, CD3-, low SS and CRTH2+ cells. Activation level was characterized by monitoring the expression of CD203c and CD63. Positive control tubes correspond to anti-IgE stimulation and are used to verify the presence of *ex vivo* reactivity of the considered whole blood sample. The Duraclone based approach for BAT that has been used herein is for RUO and not for diagnostic procedures.

RESULTS

Clinical evaluation

The studied patient is a 40 year-old-man currently living in Paris (northern France) and born in South-west France. He experienced an anaphylactic shock after ingestion of pomegranate (*Punica granatum*, Lythraceae family) and strong oral syndrome after ingestion of Rosaceae fruits (apple and peach). He has seasonal rhinoconjunctivitis during the cypress and birch pollen seasons which overlap in the north of France, relieved by antihistaminic treatment. SPT are positive with birch and cypress pollen extracts.

Biological evaluation: serum IgE binding

Specific IgE antibodies to cypress and birch pollen, peach, citrus, apple, strawberry, kiwi and cherry were found using either an individual classical FEIA or 2 types of IgE multiarray microchips (**Table**). Despite some inconsistencies, the 3 assays were coherent for IgE reactivities to PR10 allergenic proteins from various sources and also for the major allergens from Cupressaceae pollen Cup a 1 and Cry j 1. No IgE binding was found against LTPs or profilins.

Table. Specific IgEs of studied specimens (case and control) against various extracts or allergens using either an individual classical fluorescence enzyme immunoassay (CAP, kUA/L) or two types of IgE multiarray microchips: ISAC (ISU-E) and FABER (FIU/mL)

Allergenic source	Allergen	Protein family	Case patient			Control patient	
			FABER (FIU/mL)	ISAC (ISU-E)	CAP (kUA/L)	ISAC (ISU-E)	CAP (kUA/L)
Pollen							
Birch	E		1.18		27.2		3.7
Birch	Bet v 1	PR10	19.13	22	31	20	43.4
Birch	Bet v 2	Profilin	0	0	0	0	
Birch	Bet v 4	Polcalcine		0		0	
Hazelnut tree	E		1.35				
Hazelnut tree	Cor a 1	PR10	1.02	2.9		5.4	
Japanese cedar	E		0.85				
Japanese cedar	Cry j 1	Pectate lyase		0.5		0	
Arizona cypress	E				1.42		
Arizona cypress	Cup a 1	Pectate lyase	0.51	3.6		0	
Alder	Aln g 1	PR10		2.2		3.4	
Plane	E		0				0
Plane	Pla a 1	Invertase inhibitor	0	0		0	
Plane	Pla a 2	Polygalacturonase		0.25		0.1	
Olive	E		0				
Olive	Ole e 1		0	0.16		0	
Common timothy	E		0				0
Common timothy	Phl p 1	Expansin	0	0		21	0
Common timothy	Phl p 4	Berberine bridge enzyme		0.1		0	

(continued to the next page)

Allergenic Gibberellin-Regulated Protein in Pollen and Food

Table. (Continued) Specific IgEs of studied specimens (case and control) against various extracts or allergens using either an individual classical fluorescence enzyme immunoassay (CAP, kUA/L) or two types of IgE multiarray microchips: ISAC (ISU-E) and FABER (FIU/mL)

Allergenic source	Allergen	Protein family	Case patient			Control patient	
			FABER (FIU/mL)	ISAC (ISU-E)	CAP (kUA/L)	ISAC (ISU-E)	CAP (kUA/L)
Common timothy	Phl p 5	Ribonuclease	0	0.07		1.8	
Bermuda grass	Cyn d 1	Expansin		0.08		7.6	0
Weeds	(All tested)		0	0		0	
Vegetables							
Onion	E		0.94				
Garlic	E		0.85				
Fennel	E		1.85				
Leek	E		0.85				
Celery	Api g 1	PR10	0.51	0.4	1.13	2.7	
Lettuce	E		0.85				
Carrot	E		2.34				
Seed							
Chickpea	E		0.77				
Buckwheat	E		0.85				
Buckwheat	Fag e 2	2S albumin		0		0	
Red amaranth	E		0.94				
Flax	E		1.18				
Peanut	E		0				0.9
Peanut	Ara h 1	7S vicilin	0	0		0.4	0.7
Peanut	Ara h 8	PR10	0.51	1.4		7.4	
Soya	Gly m 4	PR10		0		2.6	0.7
Soya	Gly m 5	b-conglycinin		0		0.2	
Soya	Gly m 6	Glycinin		0		0.2	
Carob	E		0.94				
Nuts							
Chestnuts	E		1.01				
Walnut	E		2.19				0
Walnut	Jug r 1	2S albumin		0		0	
Walnut	Jug r 2	7S globulin	0	0		0.1	
Walnut	Jug r 3	LTP	0	0		0	
Almond	E		1.01				
Brazil nut	E		0				
Brazil nut	Ber e 1	2S albumin		0		0	
Hazelnut	E		0				2.9
Hazelnut	Cor a 1	PR10		1.9		6.7	42.8
Hazelnut	Cor a 8	LTP	0	0		0	0
Cashew nut	E						0.9
Cashew nut	Ana o 3	2S albumin	0	0		1.0	
Pistachio	E		0				1.9
Sesame	E		0				0.6
Sesame	Ses i 1	2S albumin		0		4.4	
Mustard	E						0
Fruits							
Mandarin	E		3.91				
Orange	E				1.38		
Strawberry	E		0.51		0.49		
Apple	E		0		2.62		
Apple	Mal d 1	PR10	1.85	3.2	4.37	11	
Apple	Mal d 3	LTP			0		
Apricot	E		1.01				
Peach	E				1.78		
Peach	E (peel)		0				
Peach	E (pulp)		1.02				
Peach	Pru p 1	PR10		2.5	7.42	9.8	
Peach	Pru p 3	LTP	0	0	0	0.1	
Peach	Pru p 4	Profilin			0		
Peach	Pru p 7	Snakin/GRP	0				

(continued to the next page)

Table. (Continued) Specific IgEs of studied specimens (case and control) against various extracts or allergens using either an individual classical fluorescence enzyme immunoassay (CAP, kUA/L) or two types of IgE multiarray microchips: ISAC (ISU-E) and FABER (FIU/mL)

Allergenic source	Allergen	Protein family	Case patient			Control patient	
			FABER (FIU/mL)	ISAC (ISU-E)	CAP (kUA/L)	ISAC (ISU-E)	CAP (kUA/L)
Pomegranate	E		0				
Pomegranate	Pun g 1	LTP	0				
Pomegranate	Pun g 5	Hevein-like	0				
Pomegranate	Pun g 7	Snakin/GRP	0				
Pomegranate	Pun g 14	Chitinase	0				
Kiwi	E		0		0.43		6.4
Kiwi	Act d 8	PR10		0.09		3.5	
Cherry	E				1.99		
Fish, crustaceans (All tested)			0	0			
Fish (Cod)	E		0				4.3
Fish (Cod)	Gad c 1	Parvalbumin		0		10	4.7
Fish (Carp)	Cyp c 1	Parvalbumin					8.6
Shrimp	E		0				0
Animals (All tested)			0	0			
Hen's egg white	E		0				7.1
Hen's egg	Gal d 1	Ovomucoid	0	0		0	0
Hen's egg	Gal d 2	Ovalbumin	0	0		0.2	8.1
Cat (Squame)	E		0				0
Cat (Squame)	rFel d 1	Uteroglobin	0	0		3.7	
Horse	rEqu c 1	Lipocalin		0		0.2	
Dust mites (All tested)			0	0	0	0	
Parasites, insects (All tested)			0	0		0	
Venom (Hymenoptera)			0	0		0	
Moulds (All tested)			0	0		0	

Colors are standardized according to the proposed ISAC scale: red, very high; orange, moderate/high; yellow, weak; grey, very weak; and 0, undetectable. IgE, immunoglobulin E.

After separation of proteins by 1-DE or D1-DE, IgE immunoblots were performed on proteins extracted from Cups pollen, potato and fruits reported to contain allergenic GRP: peach, citrus (orange and grapefruit) and pomegranate. Purified native or recombinant proteins from cypress pollen (BP14), peach (peamaclein, Pru p 7) and potato (snakin-1) were also used (**Fig. 1A**). Specific IgE antibodies against BP14, a 14 kDa cationic protein were evidenced in the total Cups extract (lane 1) and the basic protein fraction (lane 2), and was confirmed on the native purified BP14 (lane 3). The additional IgE reactivity at 43 kDa corresponds to the binding to the major allergen Cup s 1 and Cup s 2^s (**Fig. 1A**, lanes 1 and 2; **Fig. 1B**). In peach, IgE reactivities are found against a protein of 20 kDa (lane 4), likely to be Pru p 1 and another of 14 kDa, probably Pru p 7, since Pru p 7 is recognized in purified recombinant form by the patient's serum IgE (lane 5). Moreover, an IgE binding was observed against a single 14-kDa protein in the pomegranate extract (lane 6) in agreement with the severe symptoms reported by the patient upon ingestion of pomegranate. Concerning citrus, only a very weak (non cationic, data not shown) IgE reactivity towards a 15-17 kDa protein was detected in orange and grapefruit pulp extracts (lanes 9 and 10). The recombinant snakin-1 (lane 8) reported to cross-react with BP14 and to share 82% sequence identity with Pru p 7^a was recognized by the patient's IgE, and a similar reactivity was also found in total crude potato extract (lane 7). Immunoblot performed with 2-DE separated proteins from Cups pollen extract confirmed the IgE binding pattern to Cup s 1, Cup s 2 (cationic 43 and 55 kDa) and BP14 allergen (**Fig. 1B**).

Biological evaluation: BAT

Finally, the use of BAT allowed us to demonstrate that the basophils of this patient could be activated *ex vivo* with total protein extracts from cypress pollen, peach, pomegranate or orange and also with purified proteins such as BP14 and Pru p 7. Both activation markers, CD63 and

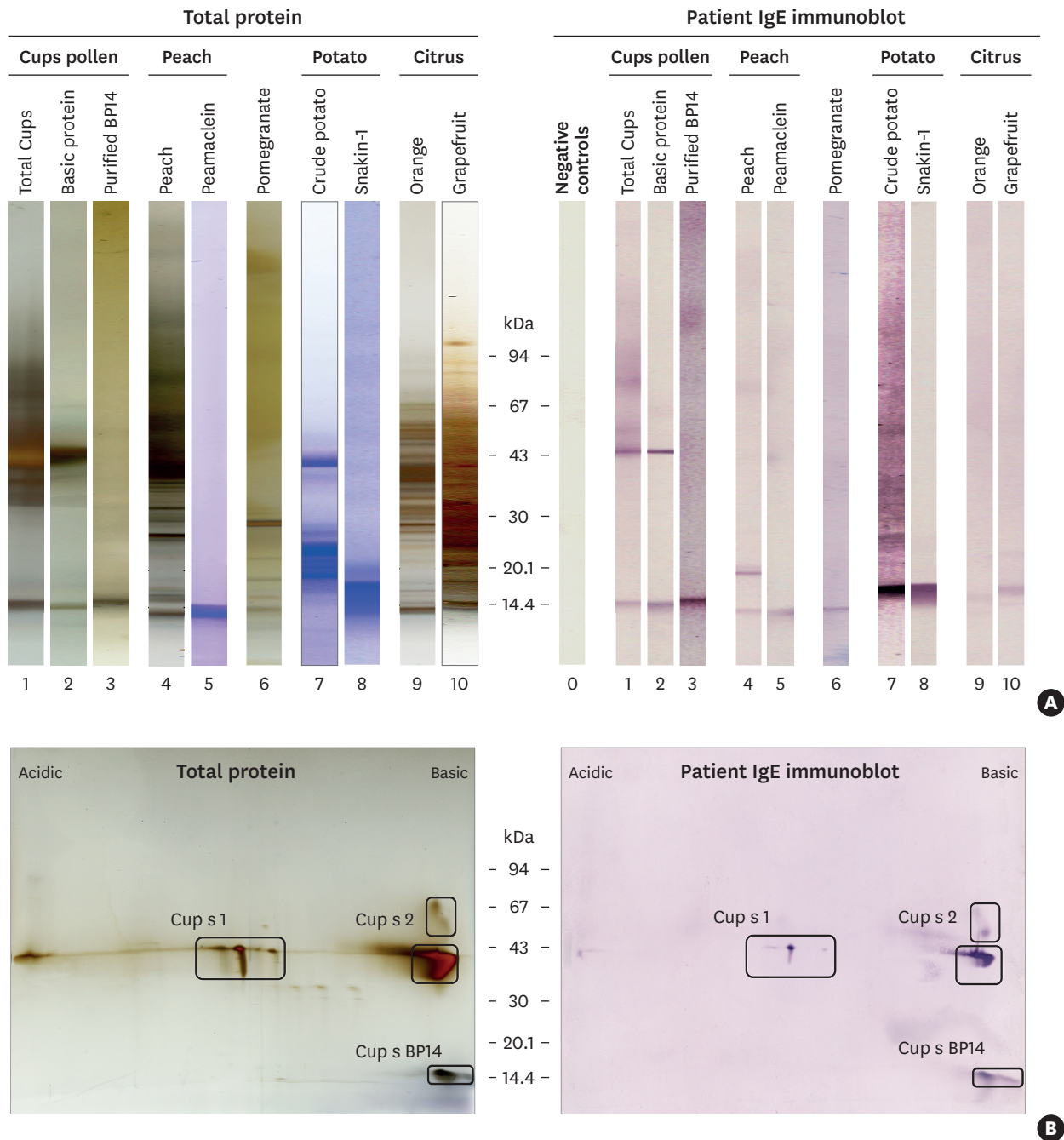


Fig. 1. IgE immunoreactivity to extracts and proteins. (A) SDS-PAGE coomassie blue (lanes 5, 7, 8) or silver nitrate (lanes 1, 2, 3, 4, 6, 9, 10) stained proteins. IgE immunoblots with patient serum (lanes 0 to 10). Negative controls (B) 2-DE. Left panel: silver-stained total proteins. Right panel: IgE immunoblot with patient serum. Relative molecular masses in kDa.

SDS-PAGE, sodium dodecyl sulfate polyacrylamide gel electrophoresis; 2-DE, two-dimensional gel electrophoresis.

CD203c, were overexpressed in a dose-dependent manner following addition of allergenic sources to basophils (Fig. 2). Interestingly, while IgE binding of patient's IgE to snakin-1 was observed (Fig. 1A), no basophil activation was shown, in keeping with the tolerance to potatoes mentioned by the patient. Considering the observed *ex vivo* activation of basophils from a control atopic patient, not allergic to cypress pollen but to birch and alder pollen and some foods (Fig. 2 and Table), the used BAT assay might be considered specific in the studied

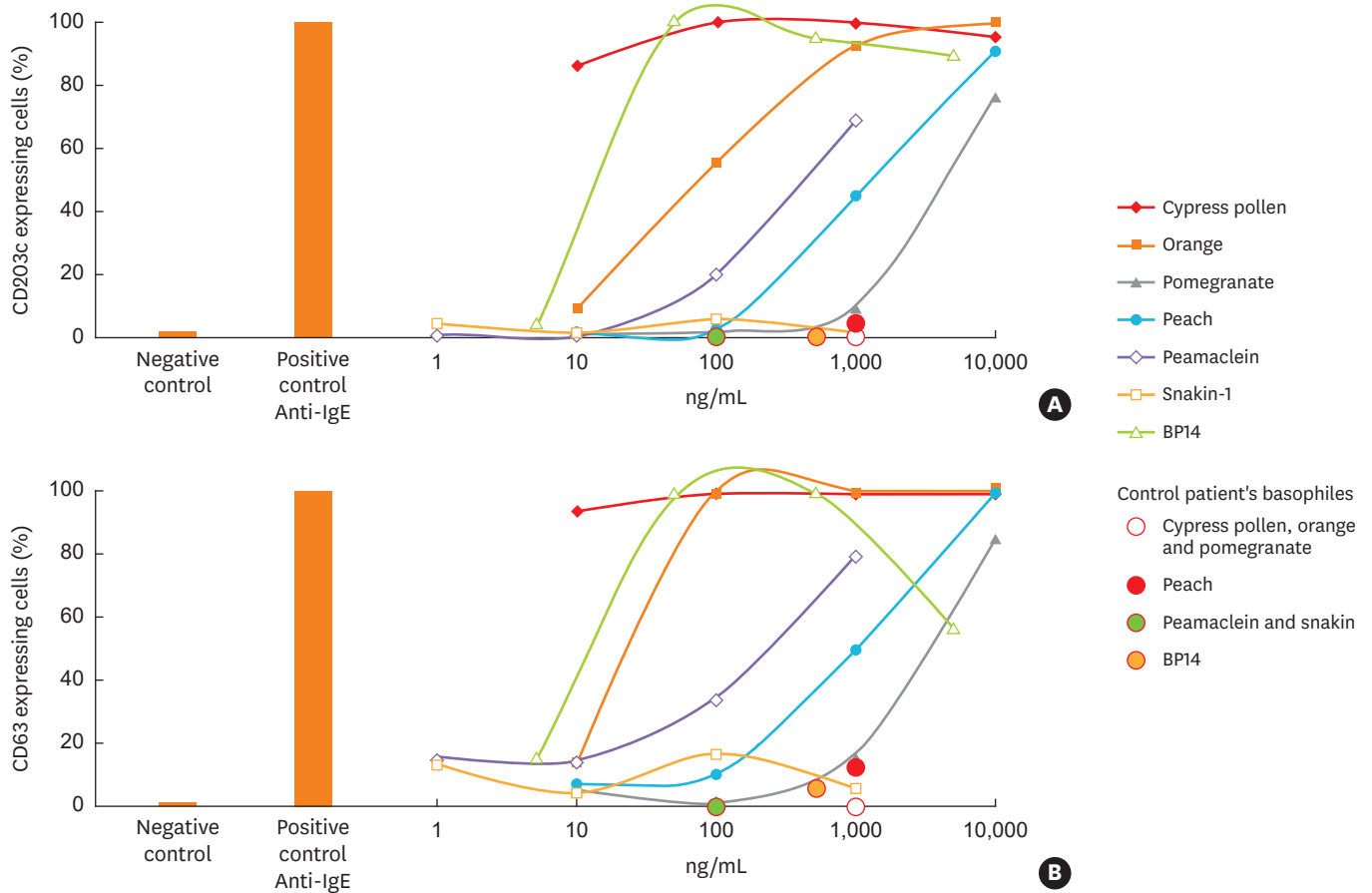


Fig. 2. Basophil activation test: *ex vivo* activation of patient's basophils expressing CD203c (A) or CD63 (B) standardized activation markers (anti-IgE, 100% activation), (no allergen, 0% activation). Four serial concentrations were used: 10 to 10^4 ng/mL of each extract, 1 to 10^3 ng/mL for recombinant proteins and 5 to 5×10^3 ng/mL for native BP14. One concentration of each allergenic source was used for the control patient's basophils.

case. Indeed, the basophils from this control atopic patient were not activated *ex vivo* by cypress pollen, orange, pomegranate or snakin-1 and only weakly activated by BP14 and peach extracts, in agreement with the results of the presence of specific IgEs to peach (Table).

DISCUSSION

The results show that BP14, the only pollen allergen member of the GRP protein family reported so far, is able to induce *ex vivo* mediator release from basophils of a cypress allergic patient. It is therefore strongly suggested that this allergen is clinically relevant like the cross-reactive allergen Pru p 7 in peach and we can therefore propose that these *ex vivo* reactivities, associated with previously published cross-inhibitions,⁹ are on the basis of the reported PFAS cypress/peach described by Hugues *et al.*³ in 2006.

IgE reactivity was found against a 14 kDa protein in pomegranate extract otherwise able to activate patient's basophils. Despite the negative results obtained with pomegranate allergens tested on the microarray chip, it is tempting to speculate that the IgE binding protein in pomegranate is Pun g 7,¹⁰ because Pun g 7 shares structural (Mr, charge, member of GRP family) and functional properties (allergenicity) with BP14 and Pru p 7.¹¹

GRPs are diversified in structure comprising a variable domain in size and amino acid sequence with a conserved C-terminal domain.⁵ Snakin-1 belongs to this protein family. It shares 82% sequence identity with Pru p 7 and was shown to cross-react with BP14,^{4,9} although to our knowledge, the snakin-1 from potato has not yet been described as an allergen. Moreover, in contrast to Pru p 7, snakin-1 was unable to inhibit the binding of specific IgE to BP14 and to activate patient's basophils which may be related to a lower affinity of cross-reactive BP14 specific IgE antibodies for snakin-1 than for Pru p 7.

Taken together, the results further gain insights into the properties of allergen members of this newly described GRP family. Whether other GRPs in pollen and/or food are specific markers for PFAS remain to be studied.

REFERENCES

1. Kim MA, Kim DK, Yang HJ, Yoo YY, Park HS, et al. Pollen-Food allergy syndrome in Korean pollinosis patients: a nationwide survey. *Allergy Asthma Immunol Res.* Forthcoming 2018.
[CROSSREF](#)
2. Werfel T, Asero R, Ballmer-Weber BK, Beyer K, Enrique E, Knulst AC, et al. Position paper of the EAACI: food allergy due to immunological cross-reactions with common inhalant allergens. *Allergy* 2015;70:1079-90.
[PUBMED](#) | [CROSSREF](#)
3. Hugues B, Didierlaurent A, Charpin D. Cross-reactivity between cypress pollen and peach: a report of seven cases. *Allergy* 2006;61:1241-3.
[PUBMED](#) | [CROSSREF](#)
4. Sénéchal H, Šantrůček J, Melčová M, Svoboda P, Zídková J, Charpin D, et al. A new allergen family involved in pollen food-associated syndrome: Snakin/gibberellin-regulated proteins. *J Allergy Clin Immunol* 2018;141:411-414.e4.
[PUBMED](#) | [CROSSREF](#)
5. Nahirňak V, Almasia NI, Hopp HE, Vazquez-Rovere C. Snakin/GASA proteins: involvement in hormone crosstalk and redox homeostasis. *Plant Signal Behav* 2012;7:1004-8.
[PUBMED](#) | [CROSSREF](#)
6. Kuddus MR, Rumi F, Tsutsumi M, Takahashi R, Yamano M, Kamiya M, et al. Expression, purification and characterization of the recombinant cysteine-rich antimicrobial peptide snakin-1 in *Pichia pastoris*. *Protein Expr Purif* 2016;122:15-22.
[PUBMED](#) | [CROSSREF](#)
7. Shahali Y, Sutra JP, Haddad I, Vinh J, Guilloux L, Peltre G, et al. Proteomics of cypress pollen allergens using double and triple one-dimensional electrophoresis. *Electrophoresis* 2012;33:462-9.
[PUBMED](#) | [CROSSREF](#)
8. Shahali Y, Sutra JP, Hilger C, Swiontek K, Haddad I, Vinh J, et al. Identification of a polygalacturonase (Cup s 2) as the major CCD-bearing allergen in *Cupressus sempervirens* pollen. *Allergy* 2017;72:1806-10.
[PUBMED](#) | [CROSSREF](#)
9. Senechal H, Charpin D, Couderc R, Poncet P. Gibberellin-regulated proteins and the enigma of the "missing link". *Rev Fr Allergol* 2018;58:63-7.
10. Tuppo L, Alessandri C, Pasquariello MS, Petriccione M, Giangrieco I, Tamburrini M, et al. Pomegranate cultivars: identification of the new IgE-binding protein pommaclein and analysis of antioxidant variability. *J Agric Food Chem* 2017;65:2702-10.
[PUBMED](#) | [CROSSREF](#)
11. Tuppo L, Alessandri C, Pomponi D, Picone D, Tamburrini M, Ferrara R, et al. Peamaclein--a new peach allergenic protein: similarities, differences and misleading features compared to Pru p 3. *Clin Exp Allergy* 2013;43:128-40.
[PUBMED](#) | [CROSSREF](#)