



12 Novel clonal groups of *Leptospira* infecting humans in multiple contrasting epidemiological contexts in Sri Lanka

Dinesha Jayasundara, Indika Senavirathna, Janith Warnasekara, Chandika Gamage, Sisira Siribaddana, Senanayake Abeysinghe Mudiyanse, Kularatne, Michael Matthias, Jean-François Mariet, Mathieu Picardeau, Suneth Agampodi, et al.

► To cite this version:

Dinesha Jayasundara, Indika Senavirathna, Janith Warnasekara, Chandika Gamage, Sisira Siribaddana, et al.. 12 Novel clonal groups of *Leptospira* infecting humans in multiple contrasting epidemiological contexts in Sri Lanka. PLoS Neglected Tropical Diseases, 2021, 15 (3), pp.e0009272. 10.1371/journal.pntd.0009272 . pasteur-03697653

HAL Id: pasteur-03697653

<https://pasteur.hal.science/pasteur-03697653>

Submitted on 17 Jun 2022

HAL is a multi-disciplinary open access archive for the deposit and dissemination of scientific research documents, whether they are published or not. The documents may come from teaching and research institutions in France or abroad, or from public or private research centers.

L'archive ouverte pluridisciplinaire **HAL**, est destinée au dépôt et à la diffusion de documents scientifiques de niveau recherche, publiés ou non, émanant des établissements d'enseignement et de recherche français ou étrangers, des laboratoires publics ou privés.



Distributed under a Creative Commons Attribution 4.0 International License

RESEARCH ARTICLE

12 Novel clonal groups of *Leptospira* infecting humans in multiple contrasting epidemiological contexts in Sri Lanka

Dinesha Jayasundara^{1,2}, Indika Senavirathna^{1,3}, Janith Warnasekara¹, Chandika Gamage⁴, Sisira Siribaddana⁵, Senanayake Abeysinghe Mudiyanse⁶, Michael Matthias⁷, Jean-François Mariet⁸, Mathieu Picardeau⁸, Suneth Agampodi^{1,7*}, Joseph M. Vinetz⁷

1 Leptospirosis Research Laboratory, Department of Community Medicine, Faculty of Medicine and Allied Sciences, Rajarata University of Sri Lanka, Saliyapura, Sri Lanka, **2** Department of Microbiology, Faculty of Medicine and Allied Sciences, Rajarata University of Sri Lanka, Saliyapura, Sri Lanka, **3** Department of Biochemistry, Faculty of Medicine and Allied Sciences, Rajarata University of Sri Lanka, Saliyapura, Sri Lanka, **4** Department of Microbiology, Faculty of Medicine, University of Peradeniya, Peradeniya, Sri Lanka, **5** Department of Medicine, Faculty of Medicine and Allied Sciences, Rajarata University of Sri Lanka, Saliyapura, Sri Lanka, **6** Department of Medicine, Faculty of Medicine, University of Peradeniya, Peradeniya, Sri Lanka, **7** Section of Infectious Diseases, Department of Internal Medicine, Yale University School of Medicine, New Haven, Connecticut, United States of America, **8** Institut Pasteur, Biology of Spirochetes unit, Paris, France

* suneth.agampodi@yale.edu



OPEN ACCESS

Citation: Jayasundara D, Senavirathna I, Warnasekara J, Gamage C, Siribaddana S, Kularatne SAM, et al. (2021) 12 Novel clonal groups of *Leptospira* infecting humans in multiple contrasting epidemiological contexts in Sri Lanka. PLoS Negl Trop Dis 15(3): e0009272. <https://doi.org/10.1371/journal.pntd.0009272>

Editor: Colleen L. Lau, Australian National University, AUSTRALIA

Received: August 10, 2020

Accepted: February 25, 2021

Published: March 18, 2021

Copyright: © 2021 Jayasundara et al. This is an open access article distributed under the terms of the [Creative Commons Attribution License](https://creativecommons.org/licenses/by/4.0/), which permits unrestricted use, distribution, and reproduction in any medium, provided the original author and source are credited.

Data Availability Statement: All genomic data are available at BIGSdb-Pasteur: the genomic-based strain taxonomy and nomenclature platform, under the *Leptospira* sequence typing at <http://bigsdb.pasteur.fr/leptospira> Hyperlink to each cgMLST is given in the Table 1. All sequences are available through the direct link.

Funding: This work was supported by the United States Public Health Service by grant U19AI115658 (JV, MM, SA) from the National Institute of Allergy

Abstract

Leptospirosis is a ubiquitous zoonotic disease and a major clinical challenge owing to the multitude of clinical presentations and manifestations that are possibly attributable to the diversity of *Leptospira*, the understanding of which is key to study the epidemiology of this emerging global disease threat. Sri Lanka is a hotspot for leptospirosis with high levels of endemicity as well as annual epidemics. We carried out a prospective study of *Leptospira* diversity in Sri Lanka, covering the full range of climatic zones, geography, and clinical severity. Samples were collected for leptospiral culture from 1,192 patients from 15 of 25 districts in Sri Lanka over two and half years. Twenty-five isolates belonging to four pathogenic *Leptospira* species were identified: *L. interrogans*, *L. borgpetersenii*, *L. weilii*, and *L. kirschneri*. At least six serogroups were identified among the isolates: Autumnalis (6), Pyrogenes (4), Icterohaemorrhagiae (2), Celledoni (1), Grippotyphosa (2) and Bataviae (1). Seven isolates did not agglutinate using available antisera panels, suggesting new serogroups. Isolates were sequenced using an Illumina platform. These data add 25 new core genome sequence types and were clustered in 15 clonal groups, including 12 new clonal groups. *L. borgpetersenii* was found only in the dry zone and *L. weilii* only in the wet zone. Acute kidney injury and cardiovascular involvement were seen only with *L. interrogans* infections. Thrombocytopenia and liver impairment were seen in both *L. interrogans* and *L. borgpetersenii* infections. The inadequate sensitivity of culture isolation to identify infecting *Leptospira* species underscores the need for culture-independent typing methods for *Leptospira*.

and Infectious Diseases, National Institutes of Health. The funders had no role in study design, data collection and analysis, decision to publish, or preparation of the manuscript.

Competing interests: The authors have declared that no competing interests exist.

Author summary

There is a huge diversity in pathogenic *Leptospira* species worldwide, and our knowledge of the currently circulating species is deficient owing to limited isolation and identification of *Leptospira* species from endemic countries. This prospective study reveals the wide pathogen diversity that causes human leptospirosis in Sri Lanka, representing four species, more than six serogroups, and fifteen clonal groups. Further, the different geographic and climatic zone distributions and clinical manifestations observed underscores the need for prospective studies to expand the molecular epidemiological approaches to combat leptospirosis.

Introduction

Leptospirosis is caused by a group of pathogenic *Leptospira* species of the phylum Spirochetes and is considered one of the commonest zoonotic diseases worldwide [1,2]. *Leptospira* spp. colonize proximal convoluted tubules of kidney tissue of various mammals particularly rodents, dogs and various domesticated livestock, and such reservoir hosts excrete the bacteria to the environment via urine [3,4]. Humans are incidental hosts who acquire the disease by direct contact with urine or tissues of reservoir animals or, more frequently by indirect contact with contaminated water sources [5,6]. The number of cases due to leptospirosis has been estimated to be 1.03 million annually worldwide, with 58,900 deaths [1]. The majority of tropical countries in Oceania, southeast Asia, the Caribbean region, South America, central and eastern sub-Saharan Africa, and south Asia are estimated to have substantial morbidity and mortality that is attributable to leptospirosis [7].

Understanding the diversity of infecting *Leptospira* has been a major global focus, especially in recent years. Substantial changes in the classification of *Leptospira* based on whole-genome sequencing have led to the identification of 43 new *Leptospira* species during the period 2018 to 2020 [8–11]. In addition, the more robust classification of *Leptospira* strains beyond the species level using core-genome multi-locus sequence typing (cgMLST) [9,12] and single nucleotide polymorphism typing methods have rapidly expanded our knowledge of the molecular epidemiology of *Leptospira*. However, the goal of reducing the global burden of this deadly disease will require enhanced understanding of pathogen types and applications and linkage to disease distribution, transmission, virulence, clinical presentations, and outcome.

The global leptospirosis disease burden study [1] highlighted Sri Lanka as leptospirosis hyperendemic with an estimated morbidity of 300.6 and mortality of 17.98 per 100,000 population per year. Disease incidence tends to be higher during the rainy seasons, i.e., the southwest and northeast monsoons. Cases, however, are not confined exclusively to the wet zone and have been reported in the dry zone as well where most residents are engaged in farming activities. Outbreaks have also occurred in the dry zone following extreme weather events like flooding [13].

As in many other endemic countries, understanding *Leptospira* diversity in Sri Lanka is limited because of a lack of knowledge of the circulating pathogenic species and serovars. Studies that utilized culture-based isolation of *Leptospira* species were carried out in Sri Lanka during the period from 1950 to 1970 in the wet zone only. Several pathogenic strains of the species *L. interrogans* [14–16], *L. borgpetersenii* [17], *L. kirschneri* [18], and *L. santarosai* were detected during that time [19,20]. Since the 1970s, no culture based isolation studies were reported until 2018, when two human isolates belonging to *L. interrogans* were recovered from the wet

zone [21]. Despite the availability of next-generation sequencing methods for many years, whole-genome sequencing data for Sri Lankan isolates were not available until recently [22].

A systematic review published in 2016 revealed the large diversity of *Leptospira* strains in Sri Lanka based on historical data [23]. Being an island with a high leptospirosis disease burden makes Sri Lanka an ideal location to study pathogen diversity linked with epidemiological and clinical patterns of the disease. Low-passage isolates from human sources with high-resolution genetic typing in a place with high pathogen diversity would enhance our global knowledge of leptospirosis. This study was designed to provide a comprehensive understanding of the circulating pathogenic *Leptospira* species and serotypes responsible for human leptospirosis in Sri Lanka, covering different clinical presentations and geographical locations as well as epidemic and endemic disease over a period of two and half years.

Methods

Ethics statement

Written informed consent was obtained from all patients prior to sample collection. This study is approved by the Ethics Review Committee of the Faculty of Medicine and Allied Sciences, Rajarata University of Sri Lanka. Protocol No. ERC/2015/18

The present study was embedded in a larger clinical-epidemiological study on leptospirosis, in Sri Lanka and the study protocol has been published [24]. Specific details related to *Leptospira* diversity and methods in brief are given here.

Study setting

This study was carried out from June 2016 through January 2019 at several locations in Sri Lanka that differed with respect to mean temperature, rainfall, elevation, ecology, human activities, and leptospirosis endemicity. The main data collection sites were the Teaching Hospital Anuradhapura (THA) and Teaching Hospital Peradeniya (THP). THA is in the dry zone located at low elevation with low humidity, high temperature, large rice paddy fields, water reservoir-based irrigation systems, and low endemicity for the disease. THP is in the wet zone located at high elevation, low temperature, rainfall-based farming activities, and high endemicity. Samples for *Leptospira* diversity assessment were collected through two approaches. First, as a part of the main study described in Agampodi et al. 2019, prospective data and sample collection was done in THA and THP. In addition, during an outbreak of leptospirosis in 2017, we set up the same procedure at Base Hospital Avissawella and Provincial General Hospital Rathnapura from June to September. These two wet-zone areas have high endemicity, representing low and intermediate elevations. As a part of the service component of this study, we offered diagnostic services to all requesting physicians and collected additional culture samples. This resulted in sample collection from District General Hospital Kegalle, Base Hospital Karawanella, Sri Jayewardenepura General Hospital, and General Hospital Polonnaruwa (GHP) again representing different geographical locations. These study sites (Fig 1) represent seven districts belonging to four provinces of the country, and the patients who visited these hospitals came from all nine provinces.

Study samples

Culture collection was done from three types of patients. Acute undifferentiated febrile (temperature $>38^{\circ}\text{C}$) patients who presented to adult wards (age >13 years) of THA, THP, Provincial General Hospital Rathnapura (PGHR) and Base Hospital Avissawella (BHA) (both outpatient department and hospitalized patients) were included as possible cases of

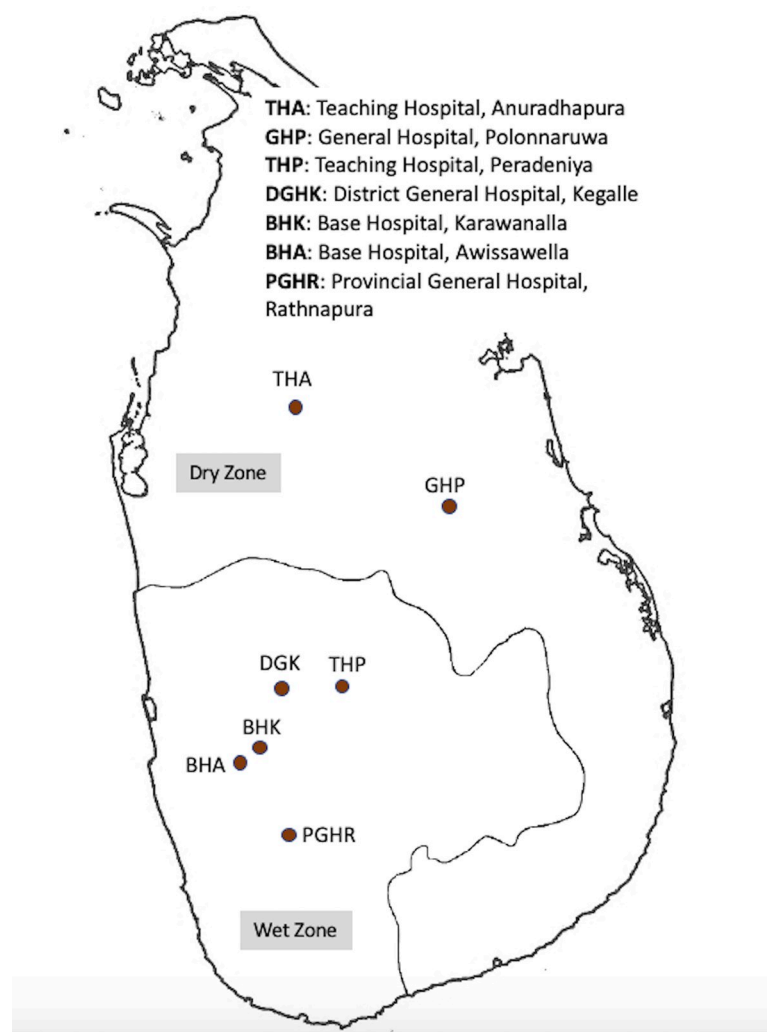


Fig 1. Geographical distribution of the seven hospitals from which the culture collection was done to identify 25 new strains of pathogenic *Leptospira* from Sri Lanka. The base map used in the figure is freely available from The United Nations Office for the Coordination of Humanitarian Affairs <https://data.humdata.org/dataset/sri-lanka-administrative-levels-0-4-boundaries>.

<https://doi.org/10.1371/journal.pntd.0009272.g001>

leptospirosis. A possible case was defined as any acute undifferentiated febrile patient with headache, myalgia and prostration. Probable cases of clinical leptospirosis which were defined as those who were having the classical clinical features of leptospirosis with an exposure history, were included from GHP. Culture samples from Sri Jayewardenepura General Hospital and Base Hospital Karawanella were included only if they came from clinically confirmed cases of leptospirosis. These cases were defined according to the surveillance case definition for leptospirosis set by epidemiology unit of Sri Lanka[25]. Physician-diagnosed probable or definite acute bacterial meningitis or lower respiratory tract infections (e.g., consolidated lobar pneumonia), traumatic or post-operative fever per physician discretion, fever owing to nosocomial infections, and any patient with confirmed diagnosis as a cause for the fever were excluded. Epidemiological data were collected from each patient using a fully structured, interviewer administered questionnaire which was described in detail in the study protocol paper published elsewhere[24]

Once the isolation is done, all culture-positive patients were later contacted and/or visited to collect additional data. The additional data were collected mainly to identify exact type of exposure if possible and residing places of patients preceding the illness. In addition, diagnosis cards of these patients were also traced to extract any missing data during hospital stay. Each patient's clinical records were also retrieved from the corresponding hospital.

Sample collection and isolation of *Leptospira*

Blood (7 ml) was collected into EDTA tubes from all eligible patients. Bedside inoculation of 2 and 4 drops (100–400 µl) was done into two tubes with 9 ml Ellinghausen-McCullough-Johnson-Harris (EMJH) semisolid medium with added antibiotics (5-fluorouracil and neomycin). These cultures were kept at room temperature (usually 28–32°C) until transfer to the *Leptospira* Research Laboratory of the Faculty of Medicine and Allied Sciences, Rajarata University, Sri Lanka, and then incubated at 30°C until the cultures become positive or for 6 months. Samples from THA were transferred on the same day to the research laboratory whereas other samples collected from distant places were transferred within 2 days of collection.

In brief, EMJH semisolid media were prepared by adding 2.3 g of EMJH base (Difco), 1.5 g bacteriological agar, and 100 mg sodium pyruvate into 785 ml distilled water and adjusting the pH to 7.4. The media were autoclaved, and once cooled to ~50°C, 100 ml *Leptospira* enrichment media and 100 ml fetal bovine serum were added. To suppress the growth of possible contaminating bacteria, 5-fluorouracil (100 µg/ml, final) and neomycin (25 µg/ml) were added. Each inoculated medium was inspected by taking approximately 50 µl of volume into a clean glass slide after mixing the culture tubes well by inverting several times. Prepared slides were examined under 40X objective of a dark-field microscope to check for the presence of motile spirochetes; this was done initially after 3 weeks and then on a monthly basis. However, samples were inspected before 3 weeks if quantitative PCR of the corresponding whole-blood sample indicated a positive reaction. The procedure for qPCR on clinical samples is described elsewhere in the published protocol paper [24]. Culture tubes were inspected for consecutive six months before reporting as negative. When growth was detected, subcultures were made into liquid and semisolid media, and an aliquot was fixed with 5% dimethyl sulfoxide and stored at –80°C. Isolates were sub-cultured every two weeks on liquid media and on semisolid media every three months. Certain isolates required weekly subculture into liquid media to maintain viability. None of the isolates became contaminated during the subculture process, although two positive original clinical samples were contaminated with bacilli. For those two samples, subcultures were made into liquid media and subsequently filtered through a 0.2 µm pore-size microfilter to overcome the problem of contamination.

Next-generation sequencing, cgMLST and phylogenetic tree

DNA was extracted from culture using the PureLink Genomic DNA Mini kit (Invitrogen, Dublin, Ireland) and Wizard Genomic DNA Purification Kit (Promega, Southampton, UK) according to manufacturer instructions. NGS was performed using Nextera XT DNA Library Preparation kit and the NextSeq 500 sequencing systems (Illumina, San Diego, CA, USA) at the Mutualized Platform for Microbiology (P2M) at Institut Pasteur. The data were analyzed using CLC Genomics Workbench 9 software (Qiagen, Hilden, Germany). cgMLST typing was performed for strain taxonomy using a scheme based on 545 highly conserved genes with BIGSdb (<http://bigsdb.pasteur.fr/leptospira>), and a phylogenetic tree was generated using cgMLST with Interactive Tree of Life v3, and GrapeTree [26] was used to visualize the core genomic relationships among the isolates and the previously reported Sri Lankan isolates [9,27,28]. A Clonal Group (CG) is defined as a group of cgMLST allelic profiles differing by no

more than 40 allelic mismatches, out of 545 gene loci, from at least one other member of the group.

Serotyping of new isolates

Serotyping of newly isolated *Leptospira* strains was done at the Pasteur Institute, France. Microscopic agglutination test using a standard battery of rabbit antisera raised against 24 reference serovars representing the main serogroups was used for this study [29,30].

Results

From June 2016 through January 2019, we acquired blood cultures from 1192 patients. Patients were from 14 districts of Sri Lanka, representing all 9 provinces (Fig 2).

The majority of patients were male ($n = 985$, 82.6%). The mean age of the sample was 43.4 years (SD 14.7). Most of the cultures (96%) were obtained from hospital inpatients, and the remaining 4% (48 cultures) were from outpatients. Of the 1192 cultures, 80 (6.7%) were received from hospitals where only typical clinical cases of leptospirosis were sampled (from Sri Jayewardenepura General Hospital, Base Hospital Karawanaella and Provincial General Hospital Rathnapura). Another 107 (9.0%) were from GHP, where patients represented only probable cases of leptospirosis. The remaining 1005 patients (84.3%) were from THA, THP, Base Hospital Avissawella and Provincial General Hospital Rathnapura, representing patients who presented with acute undifferentiated fever.

Of the 1192 patients, 25 isolates had been identified by January 2019. Among the acute undifferentiated febrile patients, 1.5% (16/1047) had culture-positive leptospirosis; among the probable and clinically confirmed cases of leptospirosis, culture positivity was 4.7% (5/107) and 5.0% (4/80), respectively. The incubation period required to detect growth (assessed with dark-field microscopy) varied between 1 and 17 weeks. For each patient, both 2 drops and 4 drops of blood-inoculated media gave positive results. The median incubation period was 15 weeks for the first 9 isolates and was 6 weeks for the remaining 16 isolates (S1 Fig).

Leptospira was isolated from one female and 24 male patients who presented with fever. Only three patients were from outpatient departments, and the rest were inpatients. Of the three outpatients, two were later admitted to a hospital owing to increased disease severity.

cgMLST analysis revealed that the 25 isolates represented four species: *L. interrogans* (15 isolates, 60%), *L. borgpetersenii* (7 isolates, 28%), *L. weilii* (2 isolates, 8%), and *L. kirschneri* (1 isolate, 4%). The predominant clonal groups (CG) were *L. borgpetersenii* CG267 (7/25), followed by *L. interrogans* CG266 (3/25), CG10 (2/25), and CG263 (2/25).

The two *L. weilii* isolates clustered in different clonal groups (CG262, CG264). Interpretable data for serogroup assay was available for only 19 isolates. Seven samples resulted in no agglutination, probably owing to new, previously unreported serogroups/serovars. The assay revealed that the 19 seropositive isolates represented at least six serogroups, namely Autumnalis, Pyrogenes, Icterohaemorrhagiae, Grippotyphosa, Celledoni, and Bataviae. Table 1 shows the species identity, serogroup status and distribution of clonal groups among the 25 isolates.

A phylogenetic tree was constructed from the cgMLST data for our 25 isolates (labeled as FMAS) together with previously reported local isolates ($n = 9$) and worldwide pathogenic *Leptospira* isolates. Fig 3 shows the phylogenetic tree constructed using the cgMLST data.

Most of the clonal groups found in the local isolates were unique and not found in other countries. The three isolates of *L. borgpetersenii* (FMAS_AP2, FMAS_AP3 and FMAS_AP8) were from patients in the same district of dry zone. Autumnalis from dry zone shows significant core genome relatedness and clustered together (Fig 4). Genomic relatedness between

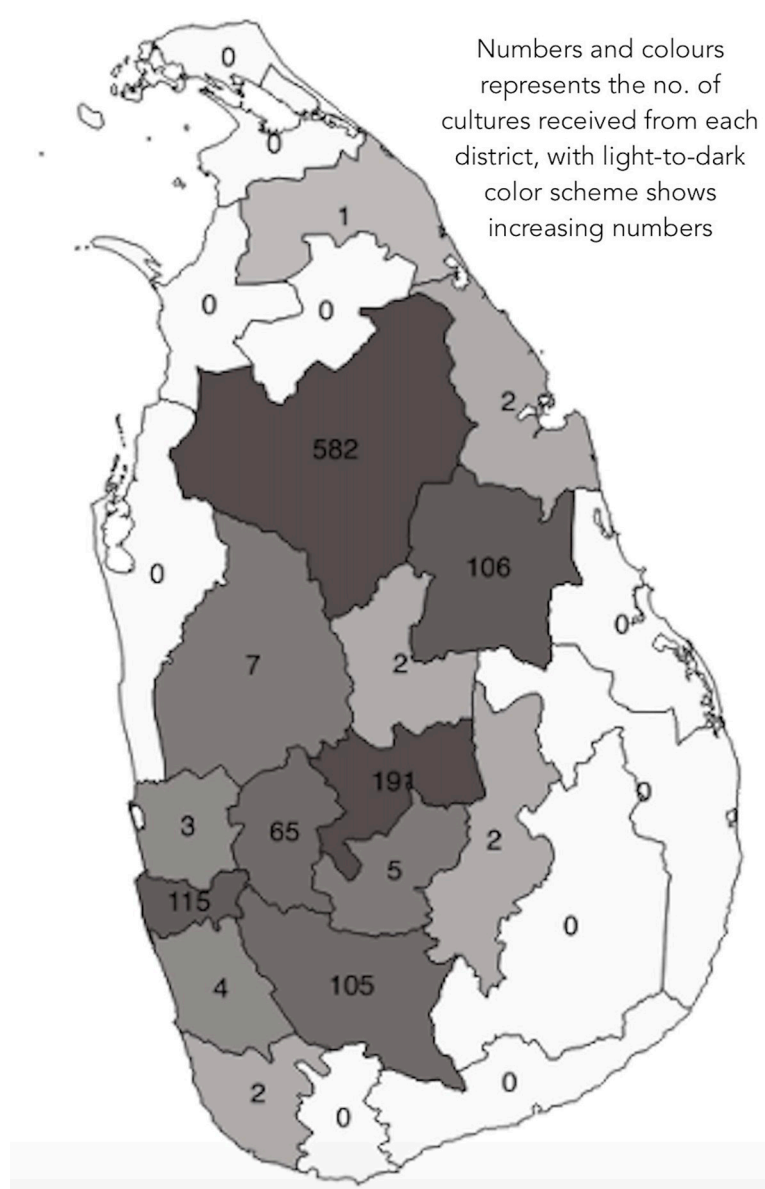


Fig 2. Distribution of probable exposure sites/residence of the 1192 febrile patients from whom the cultures were collected for the isolation of 25 new strains of pathogenic *Leptospira* in Sri Lanka. The base map used in the figure is freely available from The United Nations Office for the Coordination of Humanitarian Affairs <https://data.humdata.org/dataset/sri-lanka-administrative-levels-0-4-boundaries>.

<https://doi.org/10.1371/journal.pntd.0009272.g002>

FMAS_AP5 of dry zone and Sri Lanka 39 was observed; the latter isolate is an old isolate recovered from wet zone. (metadata for the GrapeTree is included in [S1 Table](#))

Culture-positive leptospirosis patients were distributed widely in the study areas ([Fig 5](#)). *L. borgpetersenii* was exclusively isolated from patients in areas of the dry zone at low elevation, with hot and dry conditions. The single isolate of *L. kirschneri* was from the same setting. In contrast, *L. weilii* was isolated from patients in the wet zone, whereas *L. interrogans* was isolated from patients in all geographical areas ([Fig 5](#)). The serogroup distribution also revealed a specific pattern for all nonagglutinating isolates, which mainly were from the dry zone at low

Table 1. Putative species, serogroups, cgMLST and clonal groups for the 25 newly isolated pathogenic *Leptospira* from Sri Lanka.

Strain ID	Species	Serogroup	cgMLST*	CG*
FMAS_KW1	<i>L. interrogans</i>	Pyrogenes	784	10
FMAS_KW2	<i>L. interrogans</i>	Autumnalis	631	291
FMAS_AW1	<i>L. interrogans</i>	Autumnalis	555	74
FMAS_RT1	<i>L. weilii</i>	No agglutination	556	262
FMAS_AW2	<i>L. interrogans</i>	Autumnalis	567	269
FMAS_AW3	<i>L. interrogans</i>	Pyrogenes	557	9
FMAS_RT2	<i>L. interrogans</i>	Autumnalis	569	271
FMAS_PD1	<i>L. interrogans</i>	Pyrogenes	558	263
FMAS_PD2	<i>L. weilii</i>	Celledoni	559	264
FMAS_KG1	<i>L. interrogans</i>	Bataviae	560	265
FMAS_KG2	<i>L. interrogans</i>	Pyrogenes	561	263
FMAS_AP1	<i>L. interrogans</i>	Autumnalis	562	266
FMAS_AP2	<i>L. borgpetersenii</i>	No agglutination	563	267
FMAS_AP3	<i>L. borgpetersenii</i>	No agglutination	575	267
FMAS_AP4	<i>L. borgpetersenii</i>	No agglutination	564	267
FMAS_AP5	<i>L. interrogans</i>	Pyrogenes	565	10
FMAS_AP6	<i>L. interrogans</i>	Pyrogenes	785	321
FMAS_AP7	<i>L. interrogans</i>	Autumnalis	786	266
FMAS_PN1	<i>L. borgpetersenii</i>	No agglutination	787	267
FMAS_PN2	<i>L. interrogans</i>	Icterohaemorrhagiae	788	322
FMAS_PN3	<i>L. interrogans</i>	Autumnalis	789	266
FMAS_PN4	<i>L. borgpetersenii</i>	No agglutination	790	267
FMAS_AP8	<i>L. borgpetersenii</i>	No agglutination	791	267
FMAS_AP9	<i>L. borgpetersenii</i>	No agglutination	792	267
FMAS_PN5	<i>L. kirschneri</i>	Grippityphosa	793	323

cgMLST- core genome Multi Locus Sequence Typing, **CG**: clonal group defined as a group of cgMLST allelic profiles differing by no more than 40 allelic mismatches, out of 545 gene loci, from at least one other member of the group.

* cgMLST and CG strain types reported in the table were identified through the database BIGSdb at <http://bigsdb.pasteur.fr/leptospira>

<https://doi.org/10.1371/journal.pntd.0009272.t001>

elevation. The most frequent serogroup, Autumnalis, was observed in all geographical settings. All *L. borgpetersenii* isolates were in CG267, the majority of which failed to agglutinate with reference antisera (slight agglutination was seen with antisera against serovars Grippityphosa and Louisiana).

Clinical profile of culture-positive patients

Complete demographic and clinical profiles for the culture-positive patients are included as additional data (S1 Table). No fatalities were reported for patients with culture-positive leptospirosis. Among hospitalized patients, the median duration of hospital stay was 4 days (inter-quartile range, 3–5 days), and the longest stay was 12 days followed by 9 days (both patients had acute kidney injury requiring hemodialysis). Another two had renal involvement with elevated serum creatinine but not severe acute kidney failure. Twelve patients had elevated serum glutamic-oxaloacetic transaminase and serum glutamic-pyruvic transaminase, and three other patients had elevated serum bilirubin. Thrombocytopenia was common in those 12 patients, with a platelet count <100,000 per microliter. Two patients who underwent hemodialysis also had cardiac involvement with hypotension. Notably, all patients who had one or more severe

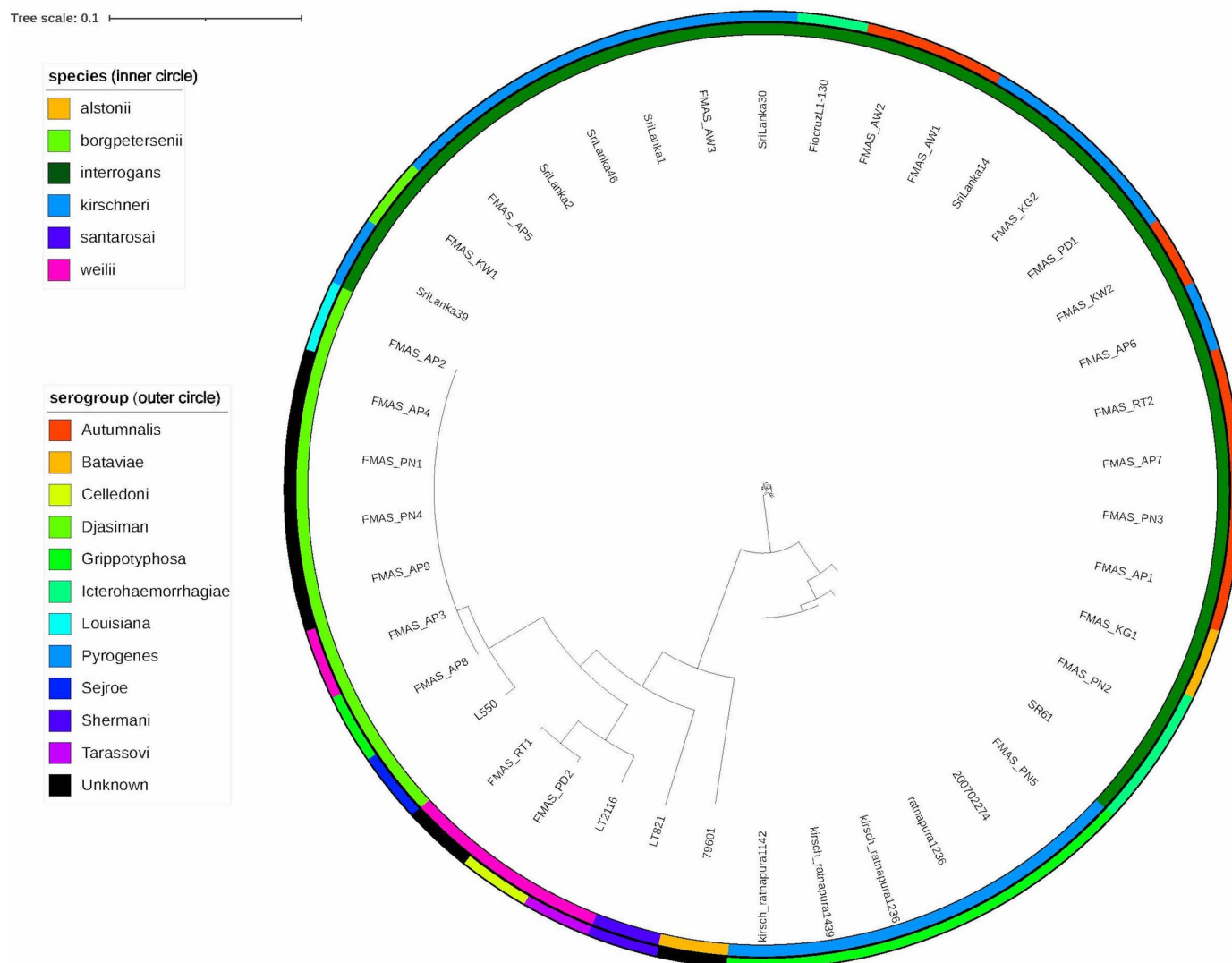


Fig 3. Phylogenetic tree showing the distribution of species and serogroups of the 25 new pathogenic *Leptospira* isolates from the present study (labeled as FMS) along with the previously reported Sri Lankan isolates and other species. The phylogenetic tree was generated using cgMLST with Interactive Tree of Life v3, and GrapeTree.

<https://doi.org/10.1371/journal.pntd.0009272.g003>

complications were infected with *L. interrogans*. Infection with *L. interrogans* or *L. borgpetersenii* was associated with thrombocytopenia and liver involvement.

Discussion

This study is the first to report information on the diversity of pathogenic *Leptospira* species in Sri Lanka and probably one of the few prospective studies on *Leptospira* disease diversity in the literature representing all geographical regions of an entire country. The study also reports the first isolation of *Leptospira* from dry zones in Sri Lanka. In addition, we report here the first isolation of *L. weilii* from humans in Sri Lanka, the existence of which was suggested based on molecular studies of clinical samples [31]. This study also provides the first evidence of serogroups Celledoni and Bataviae circulating in Sri Lanka. Moreover, with the exception of *L. santarosai*, our study identified all pathogenic *Leptospira* species that were reported to have

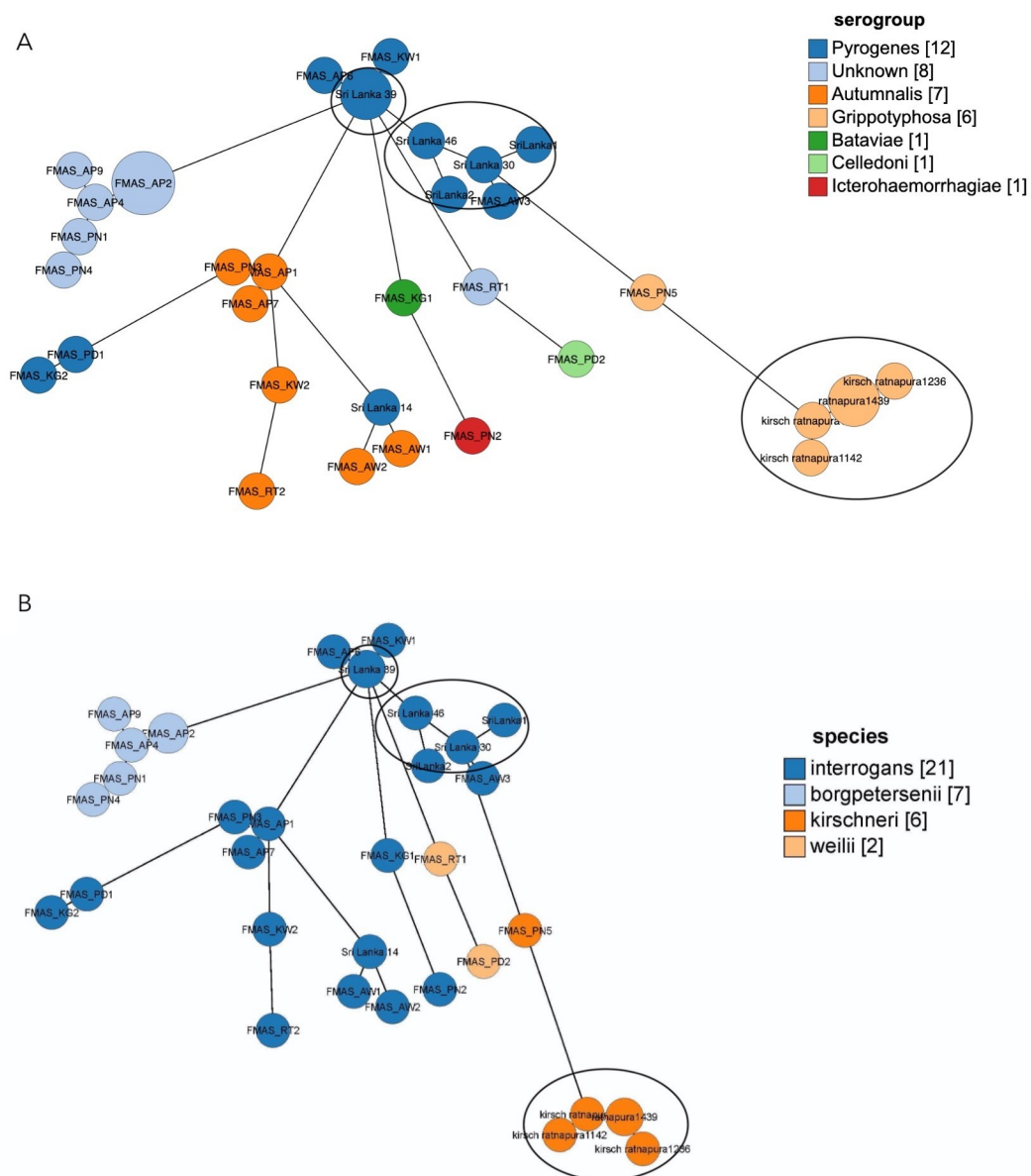


Fig 4. Genome GrapeTree showing the core-genome relationship among 25 new and 11 previously isolated *Leptospira* strains from Sri Lanka. 4A: species, 4B:serogroups. New isolates are having the prefix Faculty of Medicine and Allied Sciences. Old isolates are flagged with a circle.

<https://doi.org/10.1371/journal.pntd.0009272.g004>

existed in Sri Lanka during the 1960s and 70s (as reviewed by Naotunna et al. in 2015), confirming the breadth of *Leptospira* diversity in Sri Lanka [23]. Recent reports indicated that *L. interrogans*, *L. borgpetersenii* and *L. kirschneri* are widespread species in other tropical regions of the world [32–37]. However, the geographical distribution of certain *Leptospira* species is limited, such as *L. santarosai*, which has been mainly reported in South America [38–41], and *L. weilii* in Asia [37,42,43]. Only limited reports have described the existence of *L. weilii* outside Asia, for which cattle and rodents are the dominant reservoir hosts [37,44–46].

We identified 15 distinct clonal groups of *Leptospira*, underscoring the diversity of pathogenic *Leptospira* circulating in Sri Lanka. Genomic relatedness was not observed between most

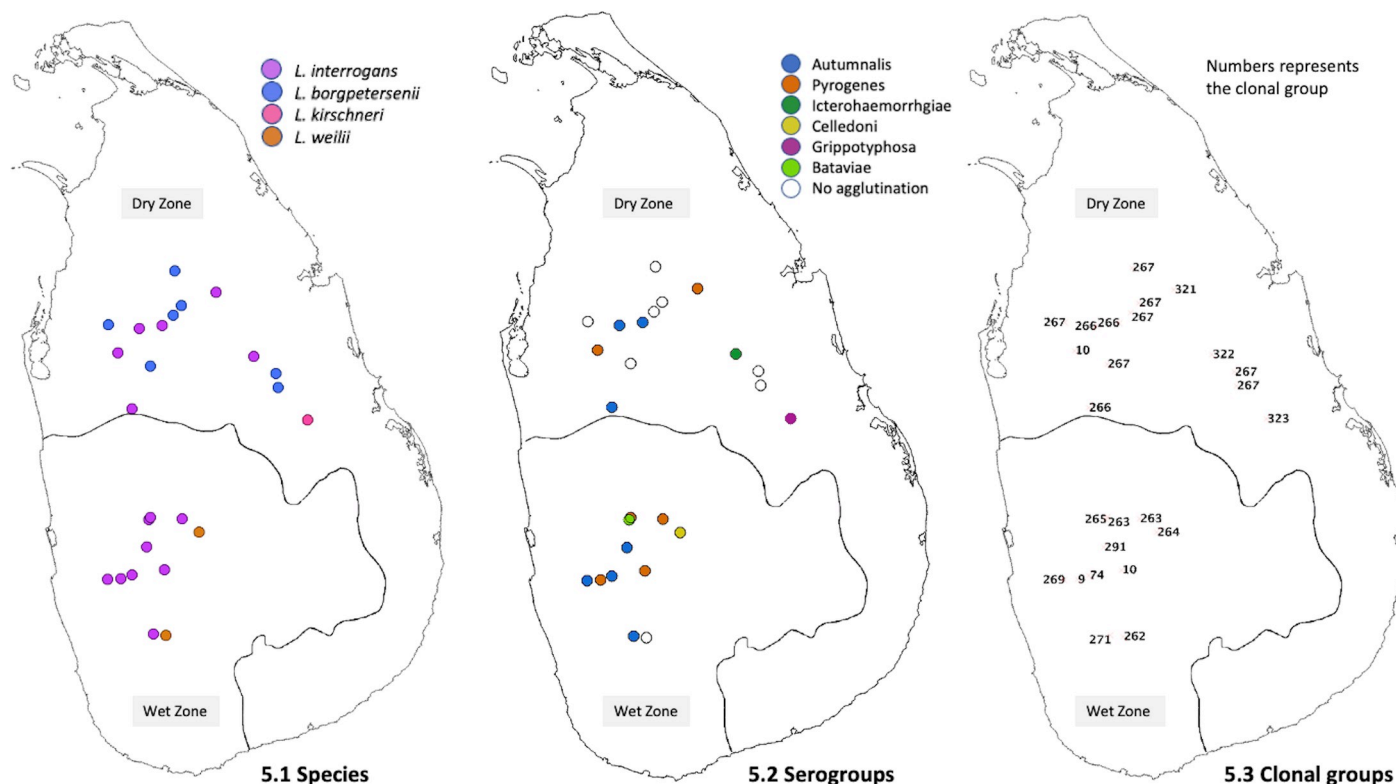


Fig 5. Geographic distribution of 25 newly isolated pathogenic *Leptospira* species, serogroups and clonal groups from Sri Lanka. The base map used in the figure is freely available from The United Nations Office for the Coordination of Humanitarian Affairs <https://data.humdata.org/dataset/sri-lanka-administrative-levels-0-4-boundaries>.

<https://doi.org/10.1371/journal.pntd.0009272.g005>

of old Sri Lankan isolates with these new isolates probably due to emergence or introduction of new strains rather than genetic drift. The distribution of certain clonal groups suggests geographical demarcation of *Leptospira* spp. found in humans between dry and wet zones. Interestingly, all three *L. borgpetersenii* isolates belonged to a same cluster and originated from patients from the same district in the dry zone. These observations might reflect similarities in climate, reservoir hosts and environmental conditions in a particular geographical area. Clustering of *L. interrogans* into several clonal groups and shared genomic relatedness across different geographical areas could possibly be due to diversity of reservoir hosts and adaptability of the species to different environmental conditions. These observations suggest that different environmental drivers of leptospirosis operate in distinct ways for different pathogenic species and their serovars in these climatic zones. Notably, areas where *L. borgpetersenii* was found in our study were all in the dry zone where cattle and buffalo are commonly used in rice paddy farming activities.

Majority of the total study population and culture positive patients were males and this is likely to be due to exposure to contaminated sources as males engage in outdoor activities more frequently than women and this pattern of involvement is seen across most of the published studies worldwide [1,7,47,48]. According to available clinical data, renal, hepatic, haematological and cardiovascular complications are observed in infections with *L. interrogans*, which is consistent with worldwide-published data [49–51]. Though the severe pulmonary infections are reported as common in some parts of Sri Lanka [52], pulmonary complications were not observed among the 25 culture positive patients.

The diversity of circulating serogroups in Sri Lanka that has been known since the 1960s has been replicated in this study, and 19 isolates belonging to 6 different serogroups, and the non-agglutinated cultures might reflect other unidentified serovars. Serological and molecular assays done on veterinary field has already identified the role of rodents, cattle and dogs as reservoir hosts in Sri Lanka [53–55]. Nityananda and Harvey carried out extensive investigations of reservoir hosts and isolated *Leptospira* from dog (serogroups Icterohaemorrhagiae, Hebdomadis, Javanica, Pomona), brown rat (Icterohaemorrhagiae), rice field rat (serogroups Icterohaemorrhagiae, Grippotyphosa, Javanica), bandicoot rat (serogroups Icterohaemorrhagiae, Javanica) and shrew (serogroups Icterohaemorrhagiae, Javanica) [53]. The observed diversity in serogroups suggests a wider range of reservoir hosts even though Sri Lanka is a small island.

Although culture isolation remains essential for in-depth molecular epidemiological studies, the present study highlights the constraints faced for culture isolation of *Leptospira*, for which both a high level of skill and procedural optimization are required. *Leptospira* spp. are fastidious organisms, and their growth requirements differ from those of many other bacterial genera. *Leptospira* tend to have a relatively long incubation period, as the lag period during *in vitro* culture range from days to many weeks [56]. Other culture-isolation studies have reported an incubation period of ~3 weeks, but with a wide range [57–59]. We attribute the relatively lengthy incubation period of 15 weeks required for the first nine cultures in our study partly to lack of experience to detect scanty growth of *Leptospira* during the first phase of the study. However, it is also possible that those isolates were fastidious and required lengthy incubation periods. Isolation is essential for genomic and vaccine studies pertaining to *Leptospira*, and for that purpose specific skills are needed. Although culture isolation has 100% positive predictive value for diagnosing leptospirosis, its sensitivity is low, consistently <10% in most studies [34,60,61]. Similarly, our study yielded low sensitivity, which can be attributed to a few possible causes: Because the study population consisted of patients with acute febrile illness, their fever may have been caused by another unrelated illness; Use of antibiotics prior to culture; also, performing blood cultures during the late phase of illness and infection with fastidious *Leptospira* spp. may account for the low sensitivity during culture isolation.

One limitation of this study is the lack of isolates from Southern part of the country where high level of mortality is reported [62]. Extremely low sensitivity of culture procedures resulted in 25 isolates, a number inadequate for statistically significant analysis of patient outcomes. Further, while *L. santarosii* has been previously reported in Sri Lanka, isolates of this species were not obtained in this study.

This large collection of pathogenic *Leptospira* isolates from clinical samples will be a great addition to the global knowledgebase for leptospirosis. Whole-genome sequencing and genomic analysis of this set of isolates will reveal the pathogenic diversity and evolution of *Leptospira* species, in comparison to archived *Leptospira* isolated from Sri Lanka more than 50 years ago. The first three isolates from this study are already published [22] and available in NCBI genome database (accession numbers: GCA_005222565.1, GCA_005222585.1, GCA_005222625.1).

Whole genome sequencing and comparative genomic analysis of this collection will facilitate ongoing studies on identifying the putative virulence genes, pathogenic mechanisms with specific host adaptations, horizontal gene transfer mechanisms, and microbial resistance as shown in studies on the diversity and epidemiology of other microorganisms [63–68].

Supporting information

S1 Fig. Distribution of incubation period for culture isolation among 25 newly isolated pathogenic *Leptospira* from Sri Lanka.

(JPG)

S1 Table. Clinical and demographic profile of the 25 culture positive leptospirosis patients. (XLSX)

Acknowledgments

We would like to thank Ms. Thilakanjali Gamage, Mr. K.M.R. Premathilaka, Mr. S.K. Senevirathna, and Mr. Milinda Perera for technical assistance, Mr. Shalka Srimantha and Ms. Chamila Kappagoda for culture maintenance and laboratory support, and Dr. Muditha Abeykoon, Dr. Chamida Wickramasinghe, and Dr. Shanika Gamage for additional culture collections. We also thank all the physicians and healthcare staff in the various participating hospitals, team of core facility P2M (Institut Pasteur, Mutualized Platform for Microbiology) for genomic sequencing and members of the National Reference Center for Leptospirosis (Institut Pasteur) for technical assistance with the cultures of *Leptospira*.

Author Contributions

Conceptualization: Dinesha Jayasundara, Suneth Agampodi, Joseph M. Vinetz.

Data curation: Dinesha Jayasundara, Janith Warnasekara, Suneth Agampodi.

Formal analysis: Dinesha Jayasundara, Indika Senavirathna.

Funding acquisition: Suneth Agampodi, Joseph M. Vinetz.

Investigation: Dinesha Jayasundara, Indika Senavirathna, Janith Warnasekara, Jean-François Mariet.

Methodology: Dinesha Jayasundara, Chandika Gamage, Michael Matthias, Suneth Agampodi, Joseph M. Vinetz.

Project administration: Suneth Agampodi.

Resources: Sisira Siribaddana, Senanayake Abeysinghe Mudiyansele Kularatne, Mathieu Picardeau.

Software: Indika Senavirathna, Jean-François Mariet, Mathieu Picardeau.

Supervision: Chandika Gamage, Senanayake Abeysinghe Mudiyansele Kularatne, Michael Matthias, Suneth Agampodi, Joseph M. Vinetz.

Validation: Michael Matthias.

Visualization: Dinesha Jayasundara, Indika Senavirathna.

Writing – original draft: Dinesha Jayasundara, Indika Senavirathna.

Writing – review & editing: Sisira Siribaddana, Michael Matthias, Mathieu Picardeau, Suneth Agampodi, Joseph M. Vinetz.

References

1. Costa F, Hagan JE, Calcagno J, Kane M, Torgerson P, Martinez-Silveira MS, et al. Global Morbidity and Mortality of Leptospirosis: A Systematic Review. *PLoS Negl Trop Dis*. 2015; 9. <https://doi.org/10.1371/journal.pntd.0003898> PMID: 26379143
2. Pappas G, Papadimitriou P, Siozopoulou V, Christou L, Akritidis N. The globalization of leptospirosis: worldwide incidence trends. *Int J Infect Dis*. 2008; 12: 351–357. <https://doi.org/10.1016/j.ijid.2007.09.011> PMID: 18055245
3. Adler B, editor. *Leptospira and Leptospirosis* | Springer. Berlin, Heidelberg: Springer Berlin Heidelberg; 2015. <https://doi.org/10.1007/978-3-662-45059-8>

4. Human leptospirosis: guidance for diagnosis, surveillance and control. Rev Inst Med Trop Sao Paulo. 2005; 45: 292–292. <https://doi.org/10.1590/s0036-46652003000500015>
5. Levett PN. Systematics of leptospiroaceae. Curr Top Microbiol Immunol. 2015; 387: 11–20. https://doi.org/10.1007/978-3-662-45059-8_2 PMID: 25388130
6. Haake DA, Levett PN. Leptospirosis in humans. Curr Top Microbiol Immunol. 2015; 387: 65–97. https://doi.org/10.1007/978-3-662-45059-8_5 PMID: 25388133
7. Torgerson PR, Hagan JE, Costa F, Calcagno J, Kane M, Martinez-Silveira MS, et al. Global Burden of Leptospirosis: Estimated in Terms of Disability Adjusted Life Years. PLoS Negl Trop Dis. 2015; 9: e0004122. <https://doi.org/10.1371/journal.pntd.0004122> PMID: 26431366
8. Thibeaux R, Iraola G, Ferrés I, Bierque E, Girault D, Soupé-Gilbert ME, et al. Deciphering the unexplored *Leptospira* diversity from soils uncovers genomic evolution to virulence. Microb genomics. 2018. <https://doi.org/10.1099/mgen.0.000144> PMID: 29310748
9. Guglielmini J, Bourhy P, Schiettekatte O, Zinini F, Brisse S, Picardeau M. Genus-wide *Leptospira* core genome multilocus sequence typing for strain taxonomy and global surveillance. PLoS Negl Trop Dis. 2019. <https://doi.org/10.1371/journal.pntd.0007374> PMID: 31026256
10. Vincent AT, Schiettekatte O, Goarant C, Neela VK, Bernet E, Thibeaux R, et al. Revisiting the taxonomy and evolution of pathogenicity of the genus *Leptospira* through the prism of genomics. PLoS Negl Trop Dis. 2019. <https://doi.org/10.1371/journal.pntd.0007270> PMID: 31120895
11. Casanovas-Massana A, Hamond C, Santos LA, de Oliveira D, Hacker KP, Balassiano I, et al. *Leptospira yasudae* sp. nov. and *Leptospira stimsonii* sp. nov., two new species of the pathogenic group isolated from environmental sources. Int J Syst Evol Microbiol. 2020. <https://doi.org/10.1099/ijsem.0.003480> PMID: 31184568
12. Fouts DE, Matthias MA, Adhikarla H, Adler B, Amorim-Santos L, Berg DE, et al. What Makes a Bacterial Species Pathogenic?: Comparative Genomic Analysis of the Genus *Leptospira*. Small PLC, editor. PLoS Negl Trop Dis. 2016; 10: e0004403. <https://doi.org/10.1371/journal.pntd.0004403> PMID: 26890609
13. Agampodi SB, Dahanayaka NJ, Bandaranayaka AK, Perera M, Priyankara S, Weerawansa P, et al. Regional Differences of Leptospirosis in Sri Lanka: Observations from a Flood-Associated Outbreak in 2011. Lukehart S, editor. PLoS Negl Trop Dis. 2014; 8: e2626. <https://doi.org/10.1371/journal.pntd.0002626> PMID: 24454971
14. Nityananda K. Isolation of *Leptospira* in Ceylon. Ceylon Med J. 1962; 7: 95–6.
15. Nityananda K SC. A New Leptospiral Serotype in the Icterohaemorrhagiae Serogroup from Ceylon. Ceylon J Med Sci. 1972; 21: 9–13.
16. Nityananda K, Sulzer CR. A new serotype of *Leptospira* belonging to the autumnalis serogroup. J Trop Med Hyg. 1971; 74: 184–186. PMID: 5570126
17. Nityananda K, Sulzer CR. A new leptospiral serotype in the Javanica serogroup from Ceylon. Trop Geogr Med. 1969/06/01. 1969; 21: 207–209. Available: http://www.ncbi.nlm.nih.gov/entrez/query.fcgi?cmd=Retrieve&db=PubMed&dopt=Citation&list_uids=5799577 PMID: 5799577
18. Kokovin IL, Chernukha IG. [Serological classification of leptospires of the grippityphosa serogroup—new serological type ratnapura]. Zh Mikrobiol Epidemiol Immunobiol. 1970; 47: 102–5. PMID: 4251597
19. Nityananda K, Harvey T. Leptospirosis_in_Ceylon-Epidemiological and Laboratory Studies. Ceylon J Med Sci. 1971; 20: 5–14.
20. Kmety E, Dikken H. Classification of the species *Leptospira interrogans* and history of its serovars. University Press Groningen; 1993. p. 104.
21. Nisansala GGT, Muthusinghe D, Gunasekara TDCP, Weerasekera MM, Fernando SSN, Ranasinghe KNP, et al. Isolation and characterization of *Leptospira interrogans* from two patients with leptospirosis in Western Province, Sri Lanka. J Med Microbiol. 2018. <https://doi.org/10.1099/jmm.0.000800> PMID: 30024367
22. Senevirathna I, Jayasundara D, Lefler JP, Chaiboonm KL, Warnasekara J, Agampodi S, et al. Complete Genome Sequence of *Leptospira interrogans* Strains FMAS_KW1, FMAS_KW2 and FMAS_AW1 Isolated from Leptospirosis Patients from Karawanalla and Awissawella, Sri Lanka. J Genomics. 2020. <https://doi.org/10.7150/jgen.43953> PMID: 32494307
23. Naotunna C, Agampodi SB, Agampodi TC. Etiological agents causing leptospirosis in Sri Lanka: A review. Asian Pac J Trop Med. 2016; 9: 390–394. <https://doi.org/10.1016/j.apjtm.2016.03.009> PMID: 27086159
24. Agampodi S, Warnasekara J, Jayasundara D, Senawirathna I, Gamage C, Kularatne S, et al. Study protocol: characterising the clinical, epidemiological and aetiological aspects of leptospirosis in Sri Lanka: a hospital based clinico- epidemiological study. 2019; 1–8. <https://doi.org/10.1136/bmjopen-2018-027850> PMID: 31511281

25. Epidemiology Unit M of health-2011. G:\Surveillance book.pdf—Surveillance_book.pdf. 2nd Edition. Epidemiology Unit, Ministry of Health, Sri Lanka; 2011 pp. 17–18.
26. Zhou Z, Alikhan NF, Sergeant MJ, Luhmann N, Vaz C, Francisco AP, et al. Grapetree: Visualization of core genomic relationships among 100,000 bacterial pathogens. *Genome Res.* 2018; 28: 1395–1404. <https://doi.org/10.1101/gr.232397.117> PMID: 30049790
27. Jolley KA, Cj Maiden M. BIGSdb: Scalable analysis of bacterial genome variation at the population level. 2010. <https://doi.org/10.1186/1471-2105-11-595> PMID: 21143983
28. Letunic I, Bork P. Interactive tree of life (iTOL) v3: an online tool for the display and annotation of phylogenetic and other trees. *Nucleic Acids Res.* 2016; 44. <https://doi.org/10.1093/nar/gkw290> PMID: 27095192
29. Kmety E, Dikken H. Classification of the species *Leptospira interrogans* and history of its serovars. 1993. p. 104.
30. Bourhy P, Collet L, Clé Ment S, Huerre M, Ave P, Giry C, et al. Isolation and Characterization of New *Leptospira* Genotypes from Patients in Mayotte (Indian Ocean). <https://doi.org/10.1371/journal.pntd.0000724> PMID: 20582311
31. Agampodi SB, Matthias M a., Moreno AC, Vinetz JM. Utility of quantitative polymerase chain reaction in leptospirosis diagnosis: Association of level of leptospiremia and clinical manifestations in Sri Lanka. *Clin Infect Dis.* 2012; 54: 1249–1255. <https://doi.org/10.1093/cid/cis035> PMID: 22354922
32. Nalam K, Ahmed A, Devi SM, Francalacci P, Baig M, Sechi LA, et al. Genetic affinities within a large global collection of pathogenic *Leptospira*: implications for strain identification and molecular epidemiology. *PLoS One.* 2010/09/02. 2010; 5: e12637. <https://doi.org/10.1371/journal.pone.0012637> PMID: 20805987
33. Bourhy P, Collet L, Lernout T, Zinini F, Hartskeerl RA, van der Linden H, et al. Human leptospira isolates circulating in Mayotte (Indian Ocean) have unique serological and molecular features. *J Clin Microbiol.* 2011/12/14. 2012; 50: 307–311. JCM.05931-11 [pii] <https://doi.org/10.1128/JCM.05931-11> PMID: 22162544
34. Thaipadungpanit J, Wuthiekanun V, Chierakul W, Smythe LD, Petkanchanapong W, Limpaboon R, et al. A Dominant Clone of *Leptospira interrogans* Associated with an Outbreak of Human Leptospirosis in Thailand. Picardeau M, editor. *PLoS Negl Trop Dis.* 2007; 1: e56. <https://doi.org/10.1371/journal.pntd.0000056> PMID: 17989782
35. Zarantonelli L, Suanes A, Meny P, Buroni F, Nieves C, Salaberry X, et al. Isolation of pathogenic *Leptospira* strains from naturally infected cattle in Uruguay reveals high serovar diversity, and uncovers a relevant risk for human leptospirosis. *PLoS Negl Trop Dis.* 2018; 12. <https://doi.org/10.1371/journal.pntd.0006694> PMID: 30212451
36. Wuthiekanun V, Sirisukkarn N, Daengsupa P, Sakaraserane P, Sangkakam A, Chierakul W, et al. Clinical diagnosis and geographic distribution of leptospirosis, Thailand. *Emerg Infect Dis.* 2007; 13: 124–126. <https://doi.org/10.3201/eid1301.060718> PMID: 17370525
37. Kurilung A, Chanchaithong P, Lugsomya K, Niyomtham W, Wuthiekanun V, Prapasarakul N. Molecular detection and isolation of pathogenic *Leptospira* from asymptomatic humans, domestic animals and water sources in Nan province, a rural area of Thailand. *Res Vet Sci.* 2017; 115: 146–154. <https://doi.org/10.1016/j.rvsc.2017.03.017> PMID: 28384550
38. Storck CH, Lamaury I. Changes in epidemiology of leptospirosis in 2003–2004, a two El Nino Southern Oscillation period, Guadeloupe archipelago, French West Indies. 2003. <https://doi.org/10.1017/S0950268807000052> PMID: 18096102
39. Peláez Sanchez RG, Lopez JÁ, Pereira MM, Naranjo MA, Agudelo-F Lórez P. Genetic diversity of leptospira in northwestern Colombia: First report of leptospira santarosai as a recognised leptospirosis agent. *Mem Inst Oswaldo Cruz.* 2016; 111: 737–744. <https://doi.org/10.1590/0074-02760160245> PMID: 27982303
40. Moreno LZ, Miraglia F, Marvulo MFV, Silva JCR, Paula CD, Costa BLP, et al. Characterization of *Leptospira santarosai* serogroup Grippotyphosa serovar Bananal isolated from Capybara (*Hydrochaeris hydrochaeris*) in Brazil. *J Wildl Dis.* 2016; 52: 688–693. <https://doi.org/10.7589/2015-09-245> PMID: 27258408
41. Valverde M de los A, Goris MGA, González V, Anchia ME, Díaz P, Ahmed A, et al. New serovars of *Leptospira* isolated from patients in Costa Rica: Implications for public health. *J Med Microbiol.* 2013; 62: 1263–1271. <https://doi.org/10.1099/jmm.0.058545-0> PMID: 23788592
42. Xu Y, Zheng H, Zhang Y, Wang Y, Zhang J, Li Z, et al. Genomic Analysis of a New Serovar of *Leptospira weilii* Serogroup Manhao. *Front Microbiol.* 2017; 8. <https://doi.org/10.3389/fmicb.2017.00149> PMID: 28210253

43. Haake DA, Dundoo M, Cader R, Kubak BM, Hartskeerl RA, Sejvar JJ, et al. Leptospirosis, Water Sports, and Chemoprophylaxis. *Clin Infect Dis*. 2002; 34: e40–e43. <https://doi.org/10.1086/339942> PMID: [11941571](#)
44. Roberts MW, Smythe L, Dohnt M, Symonds M, Slack A. Serologic-based investigation of leptospirosis in a population of free-ranging eastern grey kangaroos (*Macropus giganteus*) indicating the presence of *Leptospira weilii* serovar Topaz. *J Wildl Dis*. 2010; 46: 564–569. <https://doi.org/10.7589/0090-3558-46.2.564> PMID: [20688651](#)
45. Slack AT, Symonds ML, Dohnt MF, Corney BG, Smythe LD. Epidemiology of *Leptospira weilii* serovar Topaz infections in Australia. *Commun Dis Intell*. 2007; 31: 216–222. PMID: [17724998](#)
46. Corney BG, Slack AT, Symonds ML, Dohnt MF, McClintock CS, McGowan MR, et al. *Leptospira weilii* serovar Topaz, a new member of the Tarassovi serogroup isolated from a bovine source in Queensland, Australia. *Int J Syst Evol Microbiol*. 2008/10/10. 2008; 58: 2249–2252. <https://doi.org/10.1099/ijs.0.64884-0> [pii] PMID: [18842835](#)
47. Lau CL, Watson CH, Lowry JH, David MC, Craig SB, Wynwood SJ, et al. Human Leptospirosis Infection in Fiji: An Eco-epidemiological Approach to Identifying Risk Factors and Environmental Drivers for Transmission. Picardeau M, editor. *PLoS Negl Trop Dis*. 2016; 10: e0004405. <https://doi.org/10.1371/journal.pntd.0004405> PMID: [26820752](#)
48. Blanco RM, Romero EC. Fifteen years of human leptospirosis in São Paulo, Brazil. *J Epidemiol Res*. 2015; 2: 56. <https://doi.org/10.5430/je.v2n1p56>
49. Tubiana S, Mikulski M, Becam J, Lacassin F, Lefèvre P, Gourinat AC, et al. Risk Factors and Predictors of Severe Leptospirosis in New Caledonia. *PLoS Negl Trop Dis*. 2013; 7. <https://doi.org/10.1371/journal.pntd.0001991> PMID: [23326614](#)
50. Gouveia EL, Metcalfe J, De Carvalho ALF, Aires TSF, Villasboas-Bisneto JC, Queiroz A, et al. Leptospirosis-associated severe pulmonary hemorrhagic syndrome, Salvador, Brazil. *Emerg Infect Dis*. 2008; 14: 505–508. <https://doi.org/10.3201/eid1403.071064> PMID: [18325275](#)
51. Herrmann-Storck C, Saint Louis M, Foucand T, Lamaury I, Deloumeaux J, Baranton G, et al. Severe leptospirosis in hospitalized patients, Guadeloupe. *Emerg Infect Dis*. 2010. <https://doi.org/10.3201/eid1602.090139> PMID: [20113574](#)
52. Warnasekara J, Koralegedara I, Agampodi S. Estimating the burden of leptospirosis in Sri Lanka; A systematic review. *BMC Infect Dis*. 2019; 19. <https://doi.org/10.1186/s12879-018-3655-y> PMID: [30727968](#)
53. Nityananda K, Harvey T. Leptospirosis in Ceylon epidemiological and laboratory studies. *Ceylon J Med Sci*. 1971; 20: 5–14. Available: <http://www.dtic.mil/docs/citations/AD0724157>
54. Gamage CD, Koizumi N, Muto M, Nwafor-Okoli C, Kurukurusuriya S, Rajapakse JRPV, et al. Prevalence and Carrier Status of Leptospirosis in Smallholder Dairy Cattle and Peridomestic Rodents in Kandy, Sri Lanka. *Vector Borne Zoonotic Dis*. 2011/02/03. 2011; 11: 1041–1047. <https://doi.org/10.1089/vbz.2010.0153> PMID: [21284522](#)
55. Gamage CD, Koizumi N, Perera AKC, Muto M, Nwafor-Okoli C, Ranasinghe S, et al. Carrier status of leptospirosis among cattle in Sri Lanka: a zoonotic threat to public health. *Transbound Emerg Dis*. 2012/09/25. 2014; 61: 91–96. <https://doi.org/10.1111/tbed.12014> PMID: [22998409](#)
56. Cameron CE. Leptospiral structure, physiology, and metabolism. *Curr Top Microbiol Immunol*. 2015; 387: 21–41. https://doi.org/10.1007/978-3-662-45059-8_3 PMID: [25388131](#)
57. Bourhy P, Collet L, Clément S, Huerre M, Ave P, Giry C, et al. Isolation and characterization of new *Leptospira* genotypes from patients in Mayotte (Indian Ocean). *PLoS Negl Trop Dis*. 2010; 4. <https://doi.org/10.1371/journal.pntd.0000724> PMID: [20582311](#)
58. Wuthiekanun V, Chierakul W, Limmathurotsakul D, Smythe LD, Symonds ML, Dohnt MF, et al. Optimization of Culture of *Leptospira* from Humans with Leptospirosis. *J Clin Microbiol*. 2007; 45: 1363–1365. <https://doi.org/10.1128/JCM.02430-06> PMID: [17301285](#)
59. Girault D, Soupé-Gilbert ME, Geroult S, Colot J, Goarant C. Isolation of *Leptospira* from blood culture bottles. *Diagn Microbiol Infect Dis*. 2017; 88: 17–19. <https://doi.org/10.1016/j.diagmicrobio.2017.01.014> PMID: [28189283](#)
60. Meny P, Menéndez C, Quintero J, Hernández E, Ríos C, Balassiano IT, et al. Characterization of *Leptospira* isolates from humans and the environment in Uruguay. *Rev Inst Med Trop Sao Paulo*. 2017;59. <https://doi.org/10.1590/S1678-9946201759079> PMID: [29267587](#)
61. Matthias MA, Ricaldi JN, Cespedes M, Diaz MM, Galloway RL, Saito M, et al. Human leptospirosis caused by a new, antigenically unique *Leptospira* associated with a *Rattus* species reservoir in the Peruvian Amazon. *PLoS Negl Trop Dis*. 2008; 2. <https://doi.org/10.1371/journal.pntd.0000213> PMID: [18382606](#)
62. Herath N, Uluwattage W, Weliwitiya T, Karunanayake L, Lekamwasam S, Ratnatunga N, et al. Sequel and therapeutic modalities of leptospirosis associated severe pulmonary haemorrhagic syndrome

- (SPHS); A Sri Lankan experience. BMC Infect Dis. 2019; 19. <https://doi.org/10.1186/s12879-019-4094-0> PMID: 31113404
63. Jorge S, Kremer FS, De Oliveira NR, Navarro GDOSV, Guimarães AM, Sanchez CD, et al. Whole-genome sequencing of leptospira interrogans from southern Brazil: Genetic features of a highly virulent strain. Mem Inst Oswaldo Cruz. 2018; 113: 80–86. <https://doi.org/10.1590/0074-02760170130> PMID: 29236923
 64. Beriwal S, Padhiyar N, Bhatt D, Pandit PD, Ansari A, Lata KS, et al. LeptoDB: an integrated database of genomics and proteomics resource of Leptospira. Database. 2018; 2018. <https://doi.org/10.1093/database/bay057> PMID: 29905762
 65. Llanes A, Restrepo CM, Rajeev S. Whole genome sequencing allows better understanding of the evolutionary history of leptospira interrogans serovar hardjo. PLoS One. 2016; 11. <https://doi.org/10.1371/journal.pone.0159387> PMID: 27442015
 66. Xu Y, Zhu Y, Wang Y, Chang Y-F, Zhang Y, Jiang X, et al. Whole genome sequencing revealed host adaptation-focused genomic plasticity of pathogenic Leptospira. Sci Rep. 2016; 6: 20020. <https://doi.org/10.1038/srep20020> PMID: 26833181
 67. Kurilung A, Keeratipusana C, Suriyaphol P, Hampson DJ, Prapasarakul N. Genomic analysis of Leptospira interrogans serovar Paidjan and Dadas isolates from carrier dogs and comparative genomic analysis to detect genes under positive selection. BMC Genomics. 2019; 20: 168. <https://doi.org/10.1186/s12864-019-5562-z> PMID: 30832578
 68. Llanes A, Restrepo CM, Riesgo-Ferreiro P, Rajeev S. Genomic Variability among Field Isolates and Laboratory-Adapted Strains of Leptospira borgpetersenii Serovar Hardjo. Int J Microbiol. 2018; 2018. <https://doi.org/10.1155/2018/2137036> PMID: 29951097