



**HAL**  
open science

## High-affinity autoreactive plasma cells disseminate through multiple organs in patients with immune thrombocytopenic purpura

Pablo Canales-Herrerias, Etienne Crickx, Matteo Broketa, Aurélien Sokal, Guilhem Chenon, Imane Azzaoui, Alexis Vandenberghe, Angga Perima, Bruno Iannascoli, Odile Richard Le Goff, et al.

### ► To cite this version:

Pablo Canales-Herrerias, Etienne Crickx, Matteo Broketa, Aurélien Sokal, Guilhem Chenon, et al.. High-affinity autoreactive plasma cells disseminate through multiple organs in patients with immune thrombocytopenic purpura. *The Journal of clinical investigation*, 2022, 10.1172/JCI153580 . pasteur-03669881

**HAL Id: pasteur-03669881**

**<https://pasteur.hal.science/pasteur-03669881v1>**

Submitted on 17 May 2022

**HAL** is a multi-disciplinary open access archive for the deposit and dissemination of scientific research documents, whether they are published or not. The documents may come from teaching and research institutions in France or abroad, or from public or private research centers.

L'archive ouverte pluridisciplinaire **HAL**, est destinée au dépôt et à la diffusion de documents scientifiques de niveau recherche, publiés ou non, émanant des établissements d'enseignement et de recherche français ou étrangers, des laboratoires publics ou privés.



Distributed under a Creative Commons Attribution 4.0 International License

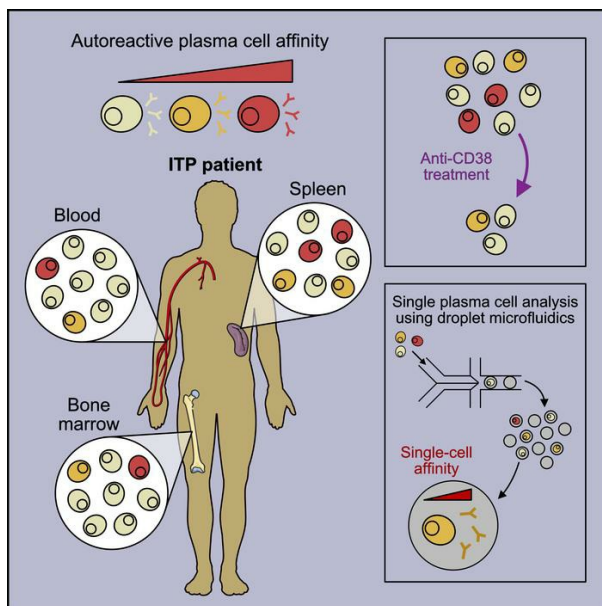
# High-affinity autoreactive plasma cells disseminate through multiple organs in patients with immune thrombocytopenic purpura

Pablo Canales-Herrerias, ... , Matthieu Mahevas, Pierre Bruhns

*J Clin Invest.* 2022. <https://doi.org/10.1172/JCI153580>.

Research In-Press Preview Autoimmunity Therapeutics

## Graphical abstract



Find the latest version:

<https://jci.me/153580/pdf>



**High-affinity autoreactive plasma cells disseminate through multiple organs in patients  
with immune thrombocytopenic purpura**

Pablo Canales-Herrerias<sup>1,2,3</sup>, Etienne Crickx<sup>4,5</sup>, Matteo Broketa<sup>1,6,7</sup>, Aurélien Sokal<sup>4</sup>, Guilhem Chenon<sup>2</sup>, Imane Azzaoui<sup>5,8</sup>, Alexis Vandenberghe<sup>5,8</sup>, Angga Perima<sup>1</sup>, Bruno Iannascoli<sup>1</sup>, Odile Richard-Le Goff<sup>1</sup>, Carlos Castrillon<sup>1</sup>, Guillaume Mottet<sup>1</sup>, Delphine Sterlin<sup>1</sup>, Ailsa Robbins<sup>9</sup>, Marc Michel<sup>10,11</sup>, Patrick England<sup>12</sup>, Gael A. Millot<sup>13</sup>, Klaus Eyer<sup>14</sup>, Jean Baudry<sup>2,§</sup>, Matthieu Mahevas<sup>4,5,11,§</sup> and Pierre Bruhns<sup>1,11,§,\*</sup>

<sup>1</sup>Institut Pasteur, Université Paris Cité, INSERM UMR1222, Unit of Antibodies in Therapy and Pathology, F-75015 Paris, France.

<sup>2</sup>Laboratoire Colloïdes et Matériaux Divisés (LCMD), ESPCI Paris, PSL Research University, CNRS UMR8231 Chimie Biologie Innovation, Paris, France.

<sup>3</sup>École Doctorale Frontières du Vivant (FdV), Centre de Recherches Interdisciplinaires, Paris, France.

<sup>4</sup>Institut Necker-Enfants Malades, INSERM U1151/CNRS UMS8253, Université Paris Descartes, Sorbonne Paris Cité, Paris, France.

<sup>5</sup>Service de Médecine Interne, Centre national de référence des cytopénies auto-immunes de l'adulte, Hôpital Henri Mondor, Assistance Publique Hôpitaux de Paris (AP-HP), Université Paris Est Créteil, Créteil, France.

<sup>6</sup>Diaccurate SA, 104 Bd de Sébastopol, 75003 Paris

<sup>7</sup>Sorbonne University, ED394, Paris, France.

<sup>8</sup>INSERM U955, Université Paris Est Créteil (UPEC), Créteil, France.

<sup>9</sup>Department of Internal Medicine, Infectious Diseases, and Clinical Immunology, Robert Debré Hospital, Reims University Hospitals, Reims, France.

<sup>10</sup>Centre Hospitalier Universitaire Henri-Mondor, Université Paris Est Créteil, Créteil, France.

<sup>11</sup>Paris Est Créteil University UPEC, Assistance Publique-Hôpitaux de Paris (AP-HP), Henri Mondor Hospital, Fédération Hospitalo-Universitaire TRUE Innovative theRapy for immune disorders, Créteil F-94010, France

<sup>12</sup>Plateforme de Biophysique Moléculaire, Institut Pasteur, CNRS UMR3528, Paris, France.

<sup>13</sup>Hub Bioinformatique et Biostatistique – DBC, Institut Pasteur, Paris, France.

<sup>14</sup>Laboratory for Functional Immune Repertoire Analysis, Institute of Pharmaceutical Sciences, ETH Zurich, Zurich, Switzerland.

§: senior authorship.

\*: corresponding author: Pierre Bruhns, Institut Pasteur, 25 rue du Dr Roux, 75015 Paris, France. Phone : +33145688629 ([pierre.bruhns@pasteur.fr](mailto:pierre.bruhns@pasteur.fr))

## ABSTRACT

The major therapeutic goal for immune thrombocytopenia (ITP) is to restore normal platelet counts using drugs to promote platelet production or by interfering with mechanisms responsible for platelet destruction. 80% of patients possess anti-integrin  $\alpha$ IIb $\beta$ 3 IgG autoantibodies causing platelet opsonization and phagocytosis. The spleen is considered the primary site of autoantibody production by autoreactive B cells and platelet destruction. The immediate failure in ~50% of patients to recover a normal platelet count after anti-CD20 Rituximab-mediated B cell depletion and splenectomy suggest that autoreactive, rituximab-resistant, IgG-secreting B cells (IgG-SC) reside in other anatomical compartments. We analyzed >3,300 single IgG-SC from spleen, bone marrow and/or blood of 27 patients with ITP revealing high inter-individual variability in affinity for  $\alpha$ IIb $\beta$ 3 with variations over 3 logs. IgG-SC dissemination and range of affinities were however similar per patient. Longitudinal analysis of autoreactive IgG-SC upon treatment with anti-CD38 mAb daratumumab demonstrated variable outcomes, from complete remission to failure with persistence of high-affinity anti- $\alpha$ IIb $\beta$ 3 IgG-SC in the bone marrow. This study demonstrates the existence and dissemination of high-affinity autoreactive plasma cells in multiple anatomical compartments of patients with ITP that may cause the failure of current therapies.

## INTRODUCTION

Immune Thrombocytopenia (ITP) is an immune disorder characterized by a strong autoimmune response against platelet autoantigens that causes platelet destruction (1). Clinical manifestations often present as mild bleeding on the skin or mucosal surfaces, but can also include life-threatening internal bleeding episodes in more severe cases (2, 3). The hallmark of ITP is the presence of anti-platelet antibodies, which contributes to the accelerated destruction of platelets by mechanisms including FcR-mediated phagocytosis by macrophages, and inhibition of new platelet generation by megakaryocytes. Autoantibodies against platelets are predominantly of the IgG isotype (4), with IgG1 being the most prevalent subclass (5). Although several platelet surface proteins are known to be targeted by autoantibodies, namely the CD42 complex (GPIb/IX/V), integrin  $\alpha 2\beta 1$  (GPIa/Iia) and GPVI (6), the integrin  $\alpha \text{IIb}\beta 3$  (GPIIb/IIIa) has long been known as the dominant autoantigen in ITP, with anti- $\alpha \text{IIb}\beta 3$  antibodies found in 60-90 % of patients (6-8).

The spleen plays a major role in the pathophysiology of ITP (9) and splenectomy remains the most effective and curative therapy (10). Indeed, autoreactive anti- $\alpha \text{IIb}\beta 3$ -secreting cells arise from germinal center reactions located in the spleen of patients with ITP. Germinal center expansion results from T follicular helper cell activation (11) and reduced T regulatory cell numbers (12). Pathogenic anti- $\alpha \text{IIb}\beta 3$  antibody-secreting cells can be detected by ELISPOT in the spleen and blood of patients with ITP (9, 13, 14). In this prototypic antibody-mediated autoimmune disease, B cell depletion using rituximab (anti-CD20 mAb) is widely used with up to 60% of patients having a short-term complete response (15), 40% achieving durable responses (6 – 12 months) and only 20 to 30% achieving a long-term response (5 years) (16, 17). Paradoxically, B cell-depletion therapy stimulates an adaptation of splenic short-lived plasma cells leading to their reprogramming into long-lived spleen cells in patients with ITP, explaining in part primary failure of rituximab (13). Furthermore, relapse of ITP after B cell depletion therapy by rituximab usually occurs during B cell lymphopoiesis (more than 6 months after treatment), corresponding to the re-initiation of an

autoimmune B cell response. We recently demonstrated that rituximab-resistant memory B cells directly contributed to ITP relapses by enabling autoreactive germinal centers along with the recruitment of naïve B cells and leading to anti- $\alpha$ IIB $\beta$ 3 secretion by newly formed antibody-secreting cells (ASC) (18).

In a T-dependent response such as ITP, ASC arise from germinal centers or memory B-cells and egress out of spleen as short-lived ASC to circulate in the blood, with some maturing into long-lived plasma cells (LLPCs) in the bone marrow. The longevity of ASC is not primarily cell-intrinsic but largely depends on signals provided by their microenvironment (19-21). Despite their fundamental role, a major impediment to studying heterogeneity of the autoimmune ASC is the difficulty to assess the specificity of such cells that express no or relatively few immunoglobulins at their surface. In order to decipher the exact contribution of different subsets of anti- $\alpha$ IIB $\beta$ 3 ASC to the pathogeny in different organs and in different clinical situations, we performed herein a high-throughput phenotypic analysis of these autoreactive human IgG-secreting cells (IgG-SC) at single-cell level, comparing patients with ITP and healthy donors. We describe a 3-log repertoire of affinities of anti- $\alpha$ IIB $\beta$ 3 IgG autoantibodies secreted from freshly isolated spleen, bone marrow and blood. The proportion of autoreactive cells among IgG-SC highly correlated between the spleen and the two other compartments, and very high-affinity anti- $\alpha$ IIB $\beta$ 3 IgG-SC were detected in all three compartments. A longitudinal analysis of autoreactive IgG-SC in 3 patients refractory to approved treatments who were administered anti-CD38 daratumumab demonstrated inter-individual variability in the targeting of high-affinity anti- $\alpha$ IIB $\beta$ 3 IgG-SC. These studies identify the large repertoire of anti- $\alpha$ IIB $\beta$ 3 affinities in patients with ITP and demonstrate the existence and dissemination of high-affinity autoreactive ASC to the bone marrow of patients with ITP that may be the underlying cause of failure of current therapies.

## RESULTS

### Single-cell bioassay allows phenotypic characterization of autoreactive ASC

In order to characterize directly the secretion rate, specificity, and affinity for  $\alpha$ IIB $\beta$ 3 of IgG secreted by autoreactive plasma cells and plasmablasts, collectively termed ASC hereunder, without the need to sort, clone, or re-express antibodies, we adapted a single-cell bioassay in microfluidic droplets (termed “DropMap”) that we have described previously (22, 23). Mononuclear cells from the spleen, bone marrow, or blood of patients and fluorescent bioassay reagents are co-encapsulated in droplets, immobilized within an observation chamber and imaged over 1 hour by time-lapse fluorescence imaging. Magnetic beads in each droplet align into a line (beadline) under a magnetic field to serve as a physical surface for a double-fluorescent sandwich ELISA revealing IgG secretion from the cell and specificity of that IgG for  $\alpha$ IIB $\beta$ 3 (Figure 1a). The time-resolved fluorescence signals allow for estimation of IgG secretion rates and affinity for  $\alpha$ IIB $\beta$ 3 of the secreted IgG by using calibration curves generated with monoclonal anti- $\alpha$ IIB $\beta$ 3 IgG of known affinity ( $K_D$ ). The anti- $\alpha$ IIB $\beta$ 3 reference curve, generated using nine anti- $\alpha$ IIB $\beta$ 3 IgG mAbs of various affinities, allows for measurements over 2 logs of affinities i.e.,  $2.5 \times 10^{-10} \leq K_D \leq 5 \times 10^{-8}$  M (Figure 1b). Therefore herein, IgG interacting with  $\alpha$ IIB $\beta$ 3 at a calculated  $K_D$  below  $5 \times 10^{-8}$  M will be considered binding i.e., anti- $\alpha$ IIB $\beta$ 3 IgG antibodies, and the cell secreting such IgG will be termed  $\alpha$ IIB $\beta$ 3-reactive ASC.

As an example, samples from the spleen, bone marrow, and blood were obtained at the time of splenectomy from one patient (patient “F”; 73 y/o, male) who was splenectomized 8 months after last rituximab infusion due to treatment failure (Fig.1c-e). All data from these samples were acquired in duplicates on the same day with high reproducibility in total and autoreactive IgG-SC detection per replicate (Supplementary Figure S1). For each organ we analyzed 5,000-9,000 single cells in total, and found IgG-SC represented 0.55%, 0.41%, and 1.26% of the mononuclear cell pool in the spleen, bone marrow, and blood, respectively. IgG-SC from the three organs displayed a similar range (5-500) and median values

(~50) of IgG secretion in molecules per second (IgG/s) (Figure 1c). Within the IgG-SC pool of all three organs, a fraction secreted anti- $\alpha$ IIB $\beta$ 3 IgG antibodies with  $K_D$  values in the  $5 \times 10^{-8}$  M –  $1 \times 10^{-10}$  M range that we categorized into low- ( $50 \text{ nM} \leq K_D \leq 10 \text{ nM}$ ), medium- ( $10 \text{ nM} < K_D \leq 1 \text{ nM}$ ) and high-affinity ( $K_D < 1 \text{ nM}$ )  $\alpha$ IIB $\beta$ 3-reactive IgG-SC to facilitate subsequent analyses (Figure 1d). In this patient, the spleen contained IgG-SC with significantly higher affinities for  $\alpha$ IIB $\beta$ 3 as compared to the blood, and the proportion of  $\alpha$ IIB $\beta$ 3-reactive cells among IgG secreting cells was 25% in the spleen, 20% in the bone marrow and 12% in the blood, with high-affinity antibodies detected only in the spleen (Fig 1e).

### **High inter-individual variability of autoreactive ASC presence and affinity in spleen, bone marrow and blood of patients with ITP.**

Our cohort included 25 patients diagnosed with chronic or acute ITP, with a median age of 51 years (ranging 21 to 79 years), to investigate the anatomical distribution, affinity and secretion rate of anti- $\alpha$ IIB $\beta$ 3 IgG-SC. Clinical characteristics are presented in Table 1. Eight patients (8/18) achieved complete response after splenectomy, with a follow-up of 14-24 months, while 10 patients (10/18) had no significant increase in platelet counts after splenectomy. A bone marrow aspirate was also performed in 7/18 patients in addition to the programmed splenectomy. We also analyzed bone marrow and blood from 9 patients with ITP that were not splenectomized (Table 1), and twenty-one healthy donors (no immune disease) as controls for spleen, bone marrow or blood samples. For every sample, we analyzed an average of 50,000-100,000 droplets in total, representing an average of 10,000-27,000 single mononuclear cells containing 0.01-5% IgG-SC (Supplementary Figure S2). Compared to the detection of anti- $\alpha$ IIB $\beta$ 3 IgG-SC by ELISPOT, DropMap was far more sensitive (Supplementary Figure S3a).

We first analyzed the global IgG-SC response per organ for all patients and healthy donors and found that among mononuclear cells 0.01% - 5% had detectable levels of IgG secretion, with a wide range of IgG secretion rates (1 - 713 IgG/s) (Figure 2a, Supplementary Figure S2c). In healthy donors IgG secretion rates were not significantly different between the spleen, blood and bone marrow. However, in



patients with ITP the IgG secretion rates in the bone marrow were significantly higher than in spleen and blood. Unexpectedly, splenic IgG-SC showed significantly (2.5-fold) lower secretion rates in patients with ITP compared to healthy donors, with median values of 46 IgG/s and 116 IgG/s, respectively. Similar findings were observed for IgG-SC from peripheral blood, with a 2-fold lower secretion rate in patients with ITP (median: 37 IgG/s) compared to healthy donors (74 IgG/s). However, IgG-SC in the BM had similar secretion rates between patients with ITP and healthy donors (median: 60 and 59 IgG/s, respectively) (Figure 2a). In all three compartments, the top ~20% highest IgG producers were responsible for ~50% of the total amount of secreted IgG (Supplementary Figure S3b-c).

Similar to the first patient we analyzed as a proof-of-concept (Figure 1c-e), we identified IgG-SC with affinity in the  $5 \times 10^{-8}$  M –  $5 \times 10^{-11}$  M range for  $\alpha$ IIb $\beta$ 3 in pooled data from all three anatomical sites of patients with ITP, but also in significantly fewer numbers in pooled data from healthy donors in the  $5 \times 10^{-8}$  M –  $5 \times 10^{-9}$  M range (Figure 2b). Only patients with ITP had IgG-SC with very-high estimated affinity ( $K_D$  below  $10^{-10}$  M), mathematically extrapolated from values outside the boundaries of the reference curve presented in Fig.1b. A weak (low R value) but significant positive correlation was found between  $K_D$  and secretion rate using the pooled data, suggesting that high affinity autoreactive ASC tend to secrete less than low-affinity autoreactive ASC (Supplementary Figure S3d-f). No correlation however was found between time elapsed since the end of rituximab treatment and either secretion rate or affinity in any compartment analyzed (Supplemental Figure S4). Only a fraction (8-13%) of IgG-SC showed crossbinding to  $\alpha$ IIb $\beta$ 3 and antigens used for polyreactivity testing (keyhole limpet hemocyanin and insulin (24)) with poor affinity (10-50nM), as expected from IgG-secreting plasma cells (25), and increased affinity for  $\alpha$ IIb $\beta$ 3 did not increase affinity for these other antigens (Supplementary Figure S5). These results demonstrate that ~90% of the IgG-SC with reactivity for  $\alpha$ IIb $\beta$ 3 analyzed herein are not polyreactive. The overall median affinity of anti- $\alpha$ IIb $\beta$ 3 IgG-SC from pooled patients with ITP was identical (~8 nM) between the three anatomical compartments (Figure 2b). The same result was found for anti- $\alpha$ IIb $\beta$ 3 IgG-SC of pooled healthy donors, with a significantly lower median affinity (~23 nM) (Figure 2b). The proportion of autoreactive IgG-SC

among mononuclear cells was 10-fold, 5-fold and 3-fold higher in patients with ITP than healthy donors in the spleen, bone marrow and blood respectively (Figure 2c). Healthy donors harbored 65-75% low-affinity and relatively few high-affinity IgG-SC, whereas patients with ITP harbored 37-46% medium affinity and 11-16% high-affinity IgG-SC in the three anatomical compartments analyzed. Compared to healthy donors, patients with ITP secrete IgG at lower rate but with a higher proportion of medium- and high-affinity anti- $\alpha$ IIB $\beta$ 3 specificities in spleen, bone marrow and blood. These results suggest a role for high-affinity autoantibodies secreted from different anatomical locations in the pathogenesis of ITP.

The majority of the patients in our cohort being refractory to various therapies, including B-cell depletion and splenectomy, we wondered if patients achieving complete response to rituximab therapy would demonstrate a reduction/disappearance of high-affinity anti- $\alpha$ IIB $\beta$ 3 IgG-SC population after treatment. We retrospectively analyzed frozen PBMC samples of four responder ITP patients collected one week before the first and three months after the last rituximab infusion. 75% (3/4) patients displayed  $\geq 3$  times less total IgG-SC after rituximab treatment, with nevertheless a non-significant trend for the group (Supplementary Figure S6a). IgG secretion rates were, however, significantly higher post-treatment (Supplementary Figure S6b), reminiscent of the higher secretion rate of blood IgG-SC in HD compared to ITP patients (Figure 2a). All four responder patients had very low initial frequencies of  $\alpha$ IIB $\beta$ 3-specific IgG-SC in circulation (mean 0.016% among PBMCs), with  $\sim 10$ -fold reduction in two patients and no major variation in the two other patients (Supplementary Figure S6c). Nevertheless, high-affinity autoreactive IgG-SC disappeared post-treatment in these patients in remission (Supplementary Figure S6d), supporting our hypothesis on the role for high-affinity autoantibody-secreting cells in the pathogenesis of ITP. We then grouped the patients from our main cohort by Rituximab responsiveness and compared them in terms of  $\alpha$ IIB $\beta$ 3 reactivity. Even though the number of responding patients in our cohort was very limited, we observed a tendency towards lesser affinity for  $\alpha$ IIB $\beta$ 3 in RTX-responding patients as compared to RTX-failure (Supplementary Figure S6e), whereas no difference was observed in the frequency of autoreactive ASCs (Supplementary Figure S6f).

We found varying proportions of autoreactive IgG-SC among mononuclear cells between patients with ITP, and within anatomical compartments of a given patient (Figure 2d-f). This finding may rely on the heterogeneity of therapeutic regimens and intrinsic cell heterogeneity of each anatomical compartment. Nevertheless, 71% (10/14) of spleen samples, but only 41% (7/17) of bone marrow and 36% (5/14) of blood samples harbored more autoreactive IgG-SC in patients with ITP compared to the highest value found in healthy control samples. 50% (7/14) of the patients with ITP harbored high-affinity anti- $\alpha$ IIb $\beta$ 3 IgG-SC in the spleen, compared to 29% (5/17) and 36% (5/14) in the bone marrow and blood, respectively. No such cell could be detected in spleens from healthy donors, and only once in blood and twice in bone marrow at very low numbers. Thus, most patients with ITP displayed a robust anti- $\alpha$ IIb $\beta$ 3 response in the spleen underlying the central role of this organ in ITP.

### **Comparable autoantibody responses in paired organs**

In order to compare the autoantibody response in different immune sites from the same patient with ITP, we obtained paired samples, either taken at the time of splenectomy (spleen + bone marrow and/or blood) or at the time of bone marrow collection (bone marrow + blood). On average 20-25% of IgG-SC were  $\alpha$ IIb $\beta$ 3-specific in the three compartments, with some patients presenting with a robust autoreactive response up to 75% of autoreactive IgG-SC among all IgG-SC (Figure 3a). Distribution of affinities towards  $\alpha$ IIb $\beta$ 3 was similar within compartments of individual patients, as exemplified in Figure 3b (refer to Supplementary Figure S7 for all paired samples). For example, patient K displayed a robust anti- $\alpha$ IIb $\beta$ 3 response with >50% autoreactive IgG-SC distributed among high-, medium- and low-affinity IgG-SC in both spleen and blood; patient T displayed large numbers of IgG-SC, with ~25% autoreactive IgG-SC largely predominated by low- and medium-affinity IgG-SC in all three compartments; patient N displayed low numbers of IgG-SC, with ~5% autoreactive IgG-SC (Figure 3b). Generally, in the cohort of paired samples, patients harboring a large proportion of  $\alpha$ IIb $\beta$ 3-reactive IgG-SC among all IgG-SC in one compartment, also did so in the other one or two compartments (Figure 3c). For the 7 patients for whom

splenectomy failed to induce clinical remission and a bone marrow sample was available (patients M, T, F, B, S, N, R), anti- $\alpha$ IIB $\beta$ 3 IgG-SC were present in the bone marrow the day of splenectomy, except for patient S. This suggests that the autoreactive bone marrow ASC population is responsible for the sustained disease observed after splenectomy in these patients.

Proportions of  $\alpha$ IIB $\beta$ 3-reactive IgG-SC correlated well between spleen and blood ( $R>0.9$ ;  $P=0.02$ ) and spleen and bone marrow ( $R>0.9$ ;  $P=0.03$ ), but did not correlate between bone marrow and blood ( $R=0.25$ ;  $P=0.58$ ) (Figure 3d). Despite the heterogeneity of clinical situations and treatment history among patients in this cohort, the spleen appears to determine the extent of the autoreactive response, likely by providing the other compartments with autoreactive IgG-SC. Our results suggest that the autoreactive IgG response in patients with ITP disseminates through multiple organs, resulting in IgG-SC populations with similar ranges of anti- $\alpha$ IIB $\beta$ 3 affinity and proportion among IgG-SC.

### **Kinetic follow-up of anti-CD38 therapy by daratumumab in patients with ITP**

The autoreactive IgG-SC in patients with chronic ITP that are refractory to conventional therapies (rituximab and/or splenectomy) can be theoretically eliminated using the anti-CD38 monoclonal antibody daratumumab that was developed to target malignant plasma cells (26). We therefore analyzed 3 patients who received daratumumab “off label” (compassionate use) for severe chronic refractory ITP. After three infusions, daratumumab led to an 89% reduction in circulating CD27<sup>+</sup> P63<sup>+</sup> plasmablasts and plasma cells (27), identified by flow cytometry (Fig.4a; Supplementary Figure S8).

Patient #D1 (34 y/o male) had been splenectomized 9 years prior to daratumumab therapy, but continued to experience skin and/or mucosal bleedings because of low platelet counts ( $< 30 \times 10^9/L$ ) despite several immunosuppressant drugs (including rituximab, mycophenolate mofetil and ciclosporin) and thrombopoietin receptor agonist (TPO-RA). He received 7 daratumumab infusions at 16 mg/kg per week without other treatment except oral Dexamethasone 20 mg before each infusion and achieved a complete response lasting now over 1 year (defined by platelet count  $>100 \times 10^9/L$ ) (Figure 4b). After a short increase

in total IgG-SC (Figure 4b) and anti- $\alpha$ IIB $\beta$ 3 IgG-SC (Figure 4c) numbers in blood, these proportions dropped 2-3-fold and remained low for at least 10 weeks after the last daratumumab infusion. Remarkably, whereas low-affinity IgG-SC remained at a third of their initial level, high-affinity IgG-SC became undetectable a few weeks after the end of the treatment (Figure 4c-d).

Patient #D2 (35 y/o female) had not been splenectomized and received her last rituximab infusion 8 years before receiving weekly daratumumab (without other treatment except oral Dexamethasone 20 mg before each infusion) for 6 weeks. This resulted in a transient complete response lasting 17 weeks before relapse. Total IgG-SC (Figure 4e) and anti- $\alpha$ IIB $\beta$ 3 IgG-SC numbers in blood nevertheless dropped  $\sim$ 10-fold following daratumumab infusions, again with the disappearance of high-affinity IgG-SC (Figure 4f-g). Overall, both patients responded similarly to daratumumab therapy in terms of depletion of IgG-SC, both total and  $\alpha$ IIB $\beta$ 3-specific, and elimination of high-affinity anti- $\alpha$ IIB $\beta$ 3 IgG-SC from circulation.

These results emphasize that daratumumab therapy targets ASC in patients with ITP and suggest that the depletion of these cells, which include the autoreactive population, could be related to clinical improvement.

### **Spleen-independent reappearance of high-affinity anti- $\alpha$ IIB $\beta$ 3 ASC after daratumumab**

Patient T (20 y/o, female) had ITP requiring splenectomy 10 months after rituximab, then daratumumab therapy for refractory disease, allowing a sequential follow-up after these interventions. After splenectomy, IgG-SC and anti- $\alpha$ IIB $\beta$ 3 IgG-SC numbers in blood dropped 7- and 4-fold, respectively (Figure 5a,d), supporting the spleen as an important source of IgG-SC in circulation (21, 28). On the day of splenectomy, high numbers of IgG-SC were found among mononuclear cells in the blood (1.4%), bone marrow (1.6%) and spleen (5%) (Figure 5a-c) i.e., 7-fold higher than the ITP spleen with the highest numbers we had analyzed before (Supplementary Figure S2). Among IgG-SC, 27, 32 and 24 % were  $\alpha$ IIB $\beta$ 3-specific, including high-affinity IgG-SC, in the spleen, bone marrow and blood, respectively, demonstrating a relatively homogenous distribution of autoreactive IgG-SC across all three compartments (Figure 5d-i). Daratumumab treatment started 3-weeks after splenectomy and induced a transient increase in platelet

counts (Figure 5a), associated with a decrease in total IgG-SC and anti- $\alpha$ IIB $\beta$ 3 IgG-SC numbers (Figure 5d) and leading to a disappearance of high-affinity IgG-SC (Figure 5g). Daratumumab was discontinued after 4 infusions for relapse and an increase of total IgG-SC, anti- $\alpha$ IIB $\beta$ 3 IgG-SC and high-affinity IgG-SC in the blood was observed after 5 weeks (Figure 5a,d,g). This reappearance of autoreactive, high-affinity IgG-SC in circulation occurred after splenectomy, suggesting autoreactive B cell reservoirs were present in other anatomical compartments or re-emergence of autoreactivity from naive B cells in secondary lymphoid organs (e.g., lymph nodes) (18). Remarkably, whereas bone marrow IgG-SC (Figure 5c) and anti- $\alpha$ IIB $\beta$ 3 IgG-SC (Figure 5f) were reduced 2.5-3-fold compared to their content before splenectomy and daratumumab treatment, high-affinity IgG-SC could be readily detected in the bone marrow 5 weeks later with a similar distribution (Figure 5i). These bone-marrow resistant autoreactive high-affinity IgG-SC identified after multiple therapies could correspond to daratumumab-resistant ASC, and/or to newly immigrating ASC generated in another compartment that remains to be identified.

## DISCUSSION

This study represents the first characterization of autoantibody-secreting cells in humans in terms of their anatomical distribution, antibody secretion and affinity for their target autoantigen, including both patients with autoimmune disease and healthy donors. It demonstrates the dissemination of autoreactive IgG-secreting cells, among the spleen, blood and bone marrow from patients with ITP. Rates of IgG secretion per cell were very diverse, with a tendency for secretion to decrease with affinity for  $\alpha$ IIB $\beta$ 3, but globally similar between IgG-SC from the spleen and blood, but dissimilar from IgG-SC from the bone marrow. Whereas affinities for the platelet autoantigen  $\alpha$ IIB $\beta$ 3 varied over 3 logs, the median affinity and range of affinities were strikingly similar between the three compartments, suggesting a common origin. In addition, the proportion of autoreactive IgG-SC closely correlated between spleen and blood, and spleen and bone marrow, supportive of the spleen being the source of autoreactive IgG-Sc and the dominant tissue in this disease (9). The persistence of autoreactive ASC in the bone marrow after failure of anti-CD20 B cell depletion, splenectomy, and anti-CD38 therapy represents a new layer of complexity and target for ITP therapy.

Chronic ITP is the most common hematologic indication for splenectomy (29), making this major secondary lymphoid organ accessible for research.  $\alpha$ IIB $\beta$ 3-reactive memory B cells (13, 18) and IgG-SC (plasma cells) were identified in the spleen of patients with ITP, as well as increased  $\alpha$ IIB $\beta$ 3-reactive effector T cells (9) and reduced Tregs (12) numbers compared to healthy controls. The stage of B cell development at which tolerance against platelet antigens breaks down remains to be determined. The identification in small numbers of anti- $\alpha$ IIB $\beta$ 3 IgG-SC in all healthy donors in this work supports the hypothesis of a low-level autoreactivity against platelets in healthy individuals. This is in agreement with the low frequency (~13%) of self-reactive IgG-secreting plasma cells found in healthy donors after sorting of CD138<sup>+</sup>CD27<sup>+</sup>CD38<sup>+</sup> cells and *in vitro* expression of their IgG (25). As the abundance of anti- $\alpha$ IIB $\beta$ 3 IgG-SC is low, with poor affinity and IgG secretion rates, the amount and overall affinity of circulating

platelet autoantibodies may be insufficient in these healthy donors to have a meaningful impact on platelet numbers, but may represent a biomarker for future evolution into ITP.

In ITP, tolerance breakdown against platelets lead to the generation of anti- $\alpha$ IIb $\beta$ 3 ASC clones that are a hallmark of germinal center autoreactive B cell generation (11, 13, 18). We provided here a comprehensive view of affinity-matured autoreactive ASCs in different compartments that possess a broad range of affinities, including high-affinity binders. Autoantibodies with affinities for cytokines as high as  $3 \times 10^{-14}$  M have been reported to develop in APS1/APECED patients (30). Whether antibody affinities for the extremely abundant antigen  $\alpha$ IIb $\beta$ 3 could reach such values remains speculative and may certainly require an extreme defect in tolerance. Remarkably, anti- $\alpha$ IIb $\beta$ 3 subnanomolar affinities could be identified from IgG-SC in spleen, blood and bone marrow in similar distributions in some individuals. The magnitude of the response in the spleen correlated with that of the blood and bone marrow, with a strong decrease in circulating IgG-SC after splenectomy, highlighting the role of this organ in the generation of IgG-SC that are released to the bloodstream. Supportive of this notion, a correlation in the number of  $\alpha$ IIb $\beta$ 3-reactive IgG-secreting cells between spleen and blood from patients with ITP that responded to splenectomy was reported earlier using ELISpot (9).

Only one case report identified previously anti- $\alpha$ IIb $\beta$ 3 in the bone marrow of one ITP patient using ELISpot (31). Our study identified anti- $\alpha$ IIb $\beta$ 3 IgG-SC in the bone marrow in 40% of patients with ITP in similar or higher proportions among mononuclear cells than in the spleen. In a direct comparison, the sensitivity of DropMap was largely higher than ELISpot. In this study, we found the frequency of autoreactive IgG-SC among mononuclear cells to be around 0.1%, which is ten times higher than what was previously described using ELISpot (9). This may be due to the inherent higher sensitivity of fluorescent bioassays compared to chromogenic assays, or to the necessity of IgG-SC to secrete over longer periods of time for ELISpot (hours) than for DropMap (45 min). The bone marrow is thought to be the main niche for survival of long-lived ASC, so the presence of autoreactive IgG-SC in this compartment could be correlated to long-term autoantibody production and, in turn, with the maintenance of chronic disease (reviewed in



(32)). Our results constitute one of the first direct findings of autoreactive plasma cell populations in human autoimmunity (33), supported also by similar findings in mouse autoimmunity models of vasculitis (34), lupus (35-38) and encephalomyelitis (39). The establishment of long-lived ASC in the bone marrow could also have important implications for treatment of ITP and other B cell-dependent autoimmune disorders: first, this population could sustain autoantibody levels following splenectomy, which may be sufficient to affect clinical manifestations; second, long-lived ASC in the bone marrow have been observed to be resistant to immunosuppressive agents (36) and to B-cell targeted therapies, such as anti-CD20 or anti-BAFF antibodies (32, 39), which may partly explain therapeutic failures.

In this context, targeting ASC with anti-CD38 appeared to be a very promising option. This work reports anti-CD38 daratumumab off-label use in three refractory chronic ITP patients, a treatment that has been proposed for autoimmune cytopenia following bone marrow transplantation (40, 41). Similar to our results, daratumumab therapy gave drastically different clinical outcomes, from complete remission to failure of therapy (41). The bone marrow is probably responsible for immediate failures of splenectomy by harboring sufficient autoreactive ASC for effective platelet destruction. However, targeting autoreactive ASC may prove difficult as bone marrow cells have been reported in mouse models to be rather resistant to therapeutic antibody depletion (42, 43). Similarly, we showed that autoreactive ASC persisted in the bone marrow of a patient with no response to daratumumab, providing a possible explanation for treatment resistance. Another patient achieved complete remission after daratumumab but relapsed several weeks after, suggesting that a lymphoid organ was perhaps able to generate new autoreactive ASC. The lymphoid organ responsible may have been lymph nodes in the splenectomized patient T (Figure 5) and the spleen (and perhaps also lymph nodes) in patient D2 who received daratumumab but had not been splenectomized (Figure 4e-g). Understanding the reasons for such variability in clinical responses to B cell depletion therapy will require more investigation, particularly as we describe herein a relatively homogenous dissemination of IgG-SC among spleen, blood and bone marrow of patients with ITP.

Our work also has several limitations, mostly inherent to human studies. Patients had varying clinical histories and received treatments that probably impacted the ASC pool. However, long-term

corticosteroids and/or immunosuppressant drugs are not commonly given for ITP in France, and we took advantage of the various therapeutic sequences including splenectomy and daratumumab to study ASC dissemination in human. Our assay focused on IgG and  $\alpha$ IIb $\beta$ 3 as previous studies showed that anti- $\alpha$ IIb $\beta$ 3 IgG were predominant autoantibodies in ITP (4, 5). We cannot, however, exclude that some patients had a response of another isotype or directed against other, less common, platelet antigens (e.g., CD42 complex (GPIb-IX-V) and integrin  $\alpha$ 2 $\beta$ 1 aka GPIa-IIa) (44). ASC are also rare cells among mononuclear cells, and in some patients described here only few anti- $\alpha$ IIb $\beta$ 3 reactive cells could be identified that limit broad extrapolations on autoreactive ASC. Our novel method of analysis proved nevertheless more sensitive than conventional assays (i.e., ELISpot), which allowed us to investigate secretion rate and affinity for  $\alpha$ IIb $\beta$ 3 for >3,300 freshly isolated *ex vivo* IgG-SC.

This work extends (45-48) our knowledge of autoreactive IgG-SC in human ITP. We demonstrate the homogenous dissemination of platelet autoreactive ASC into multiple anatomical compartments that could explain splenectomy failure in some patients. A wide range of affinities for the major ITP autoantigen  $\alpha$ IIb $\beta$ 3 were identified, with very high affinities reminiscent of affinities found in other systemic autoimmune diseases. Anti-CD38 daratumumab therapy allowed us to demonstrate the crucial contribution of ASC in ITP, and to point towards another compartment than the spleen that may serve in some patients as a source to reconstitute autoreactive ASC pools in circulation and in the bone marrow.

## MATERIAL & METHODS

### **ITP patients and controls**

All patients included in this study were adults (>18 y/o) and were diagnosed with ITP according to the international guidelines (10). Patients with underlying immunodeficiencies, hepatitis C virus or human immunodeficiency virus infection, lymphoproliferative disorders, and defined systemic lupus erythematosus ( $\geq 4$  American Rheumatism Association criteria) were excluded. Patients had acute (<3 months), persistent (3-12 months) or chronic (>12 months) ITP. According to these guidelines, a bone marrow smear biopsy was performed in patients > 60 years old, to exclude Myelodysplastic syndromes (MDS). Complete response to splenectomy was defined by a platelet count over  $100 \times 10^9$ /liter and the absence of bleeding, partial response was defined by a platelet count over  $30 \times 10^9$ /liter and below  $100 \times 10^9$ /liter and at least doubling values from baseline, and failure by a platelet count under  $30 \times 10^9$ /liter or use of salvage therapy after one month. Relapsing patients were defined as those that initially had a complete response, but then had a drop in the platelet count, below  $30 \times 10^9$ /liter, as well as a medical intervention by the treating physician. Healthy controls (HDs) were healthy individuals with no autoimmune disease or lymphoma. Control spleen samples were obtained from organ donors that died from stroke or head trauma. Control bone marrow aspirate samples were taken from healthy organ transplantation donors and were obtained from the Pitié-Salpêtrière Hospital (AP-HP). Control blood samples were obtained from the French Blood Establishment (EFS).

### **Sample processing**

Splenic tissue was obtained from splenectomy and maintained at 4°C for transportation to the laboratory. Splenic tissue fragments were homogenized using a dissociator (gentleMACS, Miltenyi), and cell suspensions were subsequently filtered and diluted in RPMI-1640 (Invitrogen). Ficoll density gradient (Ficoll Paque Plus, GE Healthcare) centrifugation at 1300 rpm for 20 min with no breaks was used to obtain

Mononuclear cells (MCs). Bone marrow cells were obtained from bone marrow aspiration and immediately placed in sodium heparin tubes (BD) for transportation to the lab at room temperature. Bone marrow cells were then dissociated by flushing thoroughly through a syringe needle and diluted in RPMI-1640 (Invitrogen), before processing by Ficoll density gradient to obtain MCs. Blood was obtained in sodium heparin tubes and transported at room temperature. After dilution in RPMI, blood was processed by Ficoll density gradient. After isolation, MCs from all organs were resuspended in RPMI supplemented with 10% HyClone FBS (Thermo Scientific) and 1% Pen/Strep (Thermo Fisher). From this point on, cell suspensions were maintained on ice. All experiments were performed within 12 hours from sample collection, except for PBMCs from four non-refractory ITP patients that were analyzed from frozen samples. Although these four samples had been frozen for storage, their frequencies of IgG-SC (mean 0.27% among PBMCs) were comparable to those found on average in fresh PBMCs from the rest of the cohort.

#### **Aqueous phase I: preparation of cells for droplet compartmentalization**

Cell suspensions were centrifuged (300g, 5min) and resuspended twice using MACS buffer consisting of PBS pH 7.2, 0.2% bovine serum albumin and 2 mM EDTA. After each resuspension, cells were filtered through a 40- $\mu$ m cell strainer to eliminate aggregates. Cells were then spun (300g, 5 min) and resuspended in DropMap buffer, consisting of RPMI (without phenol red) supplemented with 0.1% Pluronic F68, 25mM HEPES pH 7.4, 5% KnockOut™ serum replacement (All Thermo Fisher), 0.5% human serum albumin (Sigma Aldrich). Cell number in the suspension was adjusted to achieve a  $\lambda$  (mean number of cells per droplet) of  $\sim$ 0.3. For calibration curves, monoclonal IgG antibodies were diluted in DropMap buffer.

#### **Aqueous phase II: preparation of beads and bioassay reagents**

Paramagnetic nanoparticles (Strep Plus 300nM, Ademtech) were washed with Dulbecco's phosphate-buffered saline with calcium and magnesium (DPBS++, ThermoFisher). The nanoparticles were resuspended in DPBS++ containing 1 $\mu$ M biotin-labeled anti-human kappa light chain (Ig $\kappa$ ) (CaptureSelect; Thermo Fisher), and incubated 20min at room temperature. After another wash with DPBS++,

nanoparticles were resuspended in 5% pluronic F127 (ThermoFisher) and incubated 20min at room temperature. The nanoparticles were washed again and resuspended in DropMap buffer containing fluorescent reporter proteins in a final concentration of 1.25 mg/ml beads. Reporter proteins were: Alexa647-labeled F(ab')<sub>2</sub> fragment of rabbit anti-human IgG Fc-specific (Jackson ImmunoResearch) used at 75nM final in-droplet concentration; Alexa488-labeled (ThermoFisher)  $\alpha$ Iib $\beta$ 3 (purified protein, Enzyme Research) used at 30 nM final in-droplet concentration.

### **Droplet production and collection**

Droplets were generated using hydrodynamic flow-focusing on a microfluidic chip as described (22). The wafer master of SU-8 photoresist layer (MicroChem) with ~40  $\mu$ m of thickness were manufactured using soft-lithography (49) and microfluidic chips were fabricated using poly-dimethylsiloxane (PDMS; Sylgard) (22). Microfluidic chips were manufactured using soft-lithography in poly-dimethylsiloxane (PDMS). The continuous phase comprised 2% (wt/wt) “008 Fluorosurfactant” (RAN Biotechnologies) in Novec HFE7500 fluorinated oil (3M). Aqueous phases I and II were co-flowed and partitioned into droplets. The flow rate of aqueous phases I and II was 70  $\mu$ L/h, whereas that of oil was 600  $\mu$ L/h in order to achieve monodisperse droplets of ~40 pL volume. Newly generated droplets were directly injected into the DropMap 2D chamber system (22), mounted on a fluorescence microscope (Ti Eclipse, Nikon). The emulsion was exposed to a magnetic field, forcing the nanoparticles inside each droplet to form an elongated aggregate termed “beadline”.

### **Data acquisition**

Images were acquired using a Nikon inverted microscope with a motorized stage (Ti-Eclipse). Excitation light was provided by a light-emitting diode (LED) source (SOLA light source, Lumencor Inc.). Fluorescence for the specific channels were recorded using appropriate band-pass filters and camera settings (Orca Flash 4.0, Hamamatsu) at room temperature and ambient oxygen concentration. Images were acquired using a 10x objective (NA 0.45). An array of 10x10 images was acquired for each replicate, every

7.5 min in all channels over 37.5 min (6 measurements total). Duplicates or triplicates were systematically acquired for every sample, with each replicate being the filling of the DropMap 2D chamber with a novel droplet population acquired over time on a 10x10 image array.

### **Image analysis and calculations**

Images were analyzed using a custom-made Matlab script (Mathworks) that identifies each droplet and the beadline within each droplet. Fluorescence values associated to the beadline is extracted as well as the mean fluorescence of the entire droplet except the beadline (background fluorescence). A value of fluorescent relocation for each droplet at each timepoint was calculated i.e., fluorescence value of the beadline divided by the fluorescent value of the background. Data was exported to Excel (Microsoft) and sorted for droplets showing an increase in relocation of the anti-IgG reporter fluorescence (Alexa647) over time and above a threshold of Alexa647-relocation  $> 1.5$ . The sorted droplets were visually controlled for the presence of a single cell within the droplet, for droplet movement between image acquisitions, absence of fluorescent particles other than the beadline (e.g., Alexa647-anti-IgG or Alexa488- $\alpha$ IIb $\beta$ 3 protein aggregates, cell debris) and undesired aggregation of fluorescent reporters on the cell surface inside the droplet. IgG secretion rate and dissociation constant ( $K_D$ ) were estimated as described (22).

*Estimation of IgG concentration within each droplet:* a calibration curve for the estimation of IgG concentration was obtained by preparing droplet populations containing all bioassay reagents except cells that were replaced by a range of concentrations of monoclonal IgG1 (one concentration per droplet population). Images were acquired exactly 3min the droplets were immobilized in the DropMap chamber for each IgG concentration, and fluorescent relocation calculated. The calibration curve was subsequently used to estimate the IgG concentration and secretion rate (IgG molecules per second) for each time interval, and the mean secretion rate was calculated by averaging the values of all intervals.

*Estimation of dissociation constant ( $K_D$ ) for  $\alpha$ IIb $\beta$ 3 within each droplet:* a calibration curve was obtained by defining relocation values for both anti-IgG (AF647) and  $\alpha$ IIb $\beta$ 3 (AF488) for a collection of 10 anti-

$\alpha$ IIB $\beta$ 3 mAbs (listed in Table S3) with a range of  $K_D$  over 1 log as defined using Bio-layer interferometry (ForteBio). Droplet populations were generated for different concentrations of each mAb to be analyzed by the DropMap bioassay. A curve was defined by plotting the relocation from the anti-IgG (AF647) against relocation of  $\alpha$ IIB $\beta$ 3 (AF488), and the slope of the resulting line was calculated and termed “DropMap slope”. The calibration curve was defined by the linear relation between  $K_D$  for  $\alpha$ IIB $\beta$ 3 and the DropMap slope of each mAb, and allowed to extract a  $K_D$  value for each DropMap slope value calculated from a droplet containing an IgG-SC of unknown affinity for  $\alpha$ IIB $\beta$ 3.

### **Affinity determination of monoclonal antibodies**

Bio-layer interferometry measurements were performed using anti-human IgG sensors in an Octet system (ForteBio). Anti- $\alpha$ IIB $\beta$ 3 mAbs (10 $\mu$ g/mL) were captured on the sensors for 10 min. Equilibrium dissociation constants ( $K_D$ ) were determined by monitoring over 85 min the association between the immobilized antibodies and  $\alpha$ IIB $\beta$ 3 in solution in duplicate for seven concentrations of antigen (200, 100, 50, 25, 12.5, 6.25 and 3.13 nM). An irrelevant IgG monoclonal antibody was used as negative control to subtract the background signal. Data analysis was performed using the Octet Analysis software (ForteBio), and the  $K_D$  were calculated by steady state analysis.

### **Flow cytometry**

Fresh PBMCs were isolated from venous blood samples via standard density gradient centrifugation. For the surface stain, cells were washed and resuspended at  $2 \times 10^6$  in 100 $\mu$ l PBS with 2% FBS and incubated with Zombie violet fixable viability dye (Biolegend) and an antibody cocktail for 25min at 4°C in the dark. Following surface staining, cells were fixed/permeabilized for 30min at 4°C in the dark with eBioscience FoxP3 transcription factor buffer kit and incubated with antibodies recognizing intracellular targets for 30min at 4°C in the dark. Samples were acquired on a LSR Fortessa (BD Biosciences). Data were analyzed

with Kaluza software (Beckman Coulter). A list of antibodies used in this panel can be found in Table S1 and detailed gating strategy is depicted in Supplementary Figure S8.

## **ELISPOT**

Anti- $\alpha$ IIB $\beta$ 3 ELISPOTS were performed as previously described (13). Briefly, keyhole limpet hemocyanin (KLH, 2.5  $\mu$ g/ml), goat anti-human Ig polyvalent antibody (10  $\mu$ g/ml; Invitrogen), or purified  $\alpha$ IIB $\beta$ 3 (15  $\mu$ g/ml; Stago) were coated in phosphate-buffered saline (PBS) and 0.05% CaCl<sub>2</sub> in multiscreen 96-well filter plates (MSIPS4510, Millipore) with overnight incubation at 4°C.

Then, 10<sup>6</sup> splenocytes were serially diluted in culture medium (RPMI-1640 (Invitrogen) supplemented with 10% HyClone FBS (Thermo Scientific) and 1% Pen/Strep (Thermo Fisher)) in triplicate before transferring to ELISPOT plates and incubated overnight at 37°C with 5% CO<sub>2</sub>. Cells were removed, and the ELISPOT plate was incubated for 4 hours at 4°C with biotinylated goat anti-human IgG Fc (Invitrogen), followed by incubation for 1 hour at room temperature with horseradish peroxidase (HRP)–conjugated avidin (Vector Laboratories). HRP activity was further revealed using 3-amino-9-ethylcarbazole (BD Biosciences) for 8 min at room temperature in the dark. Spots were enumerated in each well with an ELISPOT reader using the AID software (version 3.5; AutoImmun Diagnostika).

## **Statistics**

The R environment v4.0.5 was used for all the analyses (50). Data were neither averaged nor normalized prior analyses. Response variables were log<sub>2</sub> converted for better adjustment to linear models. Data were fitted to a linear (quantitative response) or logistic (qualitative response) model that includes the variables of interest, i.e., Group (HD or ITP classes) and Sample Type (SP, BL or BM classes), plus the Patient variable nested into the Group variable. Group and Sample Type interaction was added in the model related to Figure 2a because of the post-hoc inter-variable contrast comparisons. Otherwise, it was removed from the models when the effect was not significant. Age and Sex covariates were not incorporated as their



effects were already represented by the Patient variable. Mixed models were used using the lmer() function of the lme4 package in order to consider the effect of Patient and patient:Group interaction as random. Anova analyses were performed with the Anova() function of the car package. Type 3 Sum of Squares was applied because of unbalanced designs. Two by two effect comparisons (contrast comparisons) were performed with the emmeans() function of the emmeans package. Unequal variance t test (Welch test) was used in bivariate designs, i.e., when data were analysed on a single patient (Figure 1) or in the presence of a single value per patient (Figure 3a). In figure 3d-f, a Pearson correlation test was performed after removal of zero values, log2 transformation, and residuals checking of the linear regression carried out in both ways. Statistical significance was set to  $P \leq 0.05$ . In each figure, type I error was controlled by correcting the p values according to the Benjamini & Hochberg method (“BH” option in the p.adjust() function of R). Results are detailed in Table S2.

### **Study approval**

This study was conducted in compliance with the Declaration of Helsinki principles and was approved by the Agence de la Biomédecine and the Institutional Review Boards Comité de Protection des Personnes (CPP) Ile-de-France IX (patients with ITP) and Ile-de-France II (HD spleen). All patients with ITP provided written informed consent before the collection of samples.

### **Supplemental material**

Figure S1. Bioassay calibration and reproducibility

Figure S2. DropMap system throughput and IgG production by single cells

Figure S3. Sensitivity of the bioassay, cumulative IgG secretion and absence of correlation between IgG secretion and affinity for  $\alpha$ IIB $\beta$ 3

Figure S4. Absence of correlation between last rituximab infusion and secretion rate or anti- $\alpha$ IIB $\beta$ 3 affinity

Figure S5. Polyreactivity measurements

Figure S6. IgG-SC and anti- $\alpha$ IIB $\beta$ 3 IgG-SC in responder patients after rituximab therapy.

Figure S7. Affinity distribution among paired organs

Figure S8. Identification of circulating plasma cells following daratumumab therapy

Table S1. Reagents and software used for flow cytometry

Table S2. Statistical analyses

Table S3. Antibodies used for calibration

## ACKNOWLEDGEMENTS

The authors acknowledge Ms Laetitia Languille for the coordination of patient recruitment at Hôpital Henri Mondor, Créteil, France, Dr Maxime Moulard (BioCytex, Marseille, France) and Dr Habib Boukerche (Faculté de Médecine René Laënnec, Lyon, France) for their kind gifts of anti- $\alpha$ IIb $\beta$ 3 (GPIIb/IIIa) mAb clones. P.C-H. was supported partly by a stipend from the Pasteur - Paris University (PPU) International PhD program, and by a fellowship from the French *Fondation pour la Recherche Médicale* (FRM). M.B. is the recipient of a CIFRE PhD fellowship. C.C. was supported by CONCYTEC, Peru. P.B. acknowledges funding from the French National Research Agency grants ANR-18-CE15-0001 project Autoimmuni-B and ANR-14-CE16-0011 project DROPmAbs, funding by the Institut Carnot Pasteur Microbes et Santé, the Institut Pasteur and the Institut National de la Santé et de la Recherche Médicale (INSERM). E.K. acknowledges funding from the Branco Weiss Fellowship (Society in Science) and the European Research Council (ERC) (grant agreement #80336). J.B. acknowledges funding from the French government through BPIFrance under the frame “Programme d’Investissements d’Avenir” (CELLIGO Project), the “Institut Pierre-Gilles de Gennes” through the laboratoire d’excellence, “Investissements d’avenir” programs ANR-10-IDEX-0001-02 PSL, ANR-10- EQPX-34 and ANR-10-LABX-3.

## AUTHOR CONTRIBUTIONS

Experimental design, P.C-H, K.E, J.B, M.M and P.B; Investigation, P.C-H, E.C, M.B, A.S, G.C, I.A, A.V, A.P, B.I, O.R-L, C.C, G.M and D.S; Formal analysis, P.C-H, M.B, P.E, G.M, E.K, J.B, M.M and P.B; Writing (original draft), P.C-H and P.B; Writing (review and editing), all authors.

## COMPETING INTERESTS STATEMENT

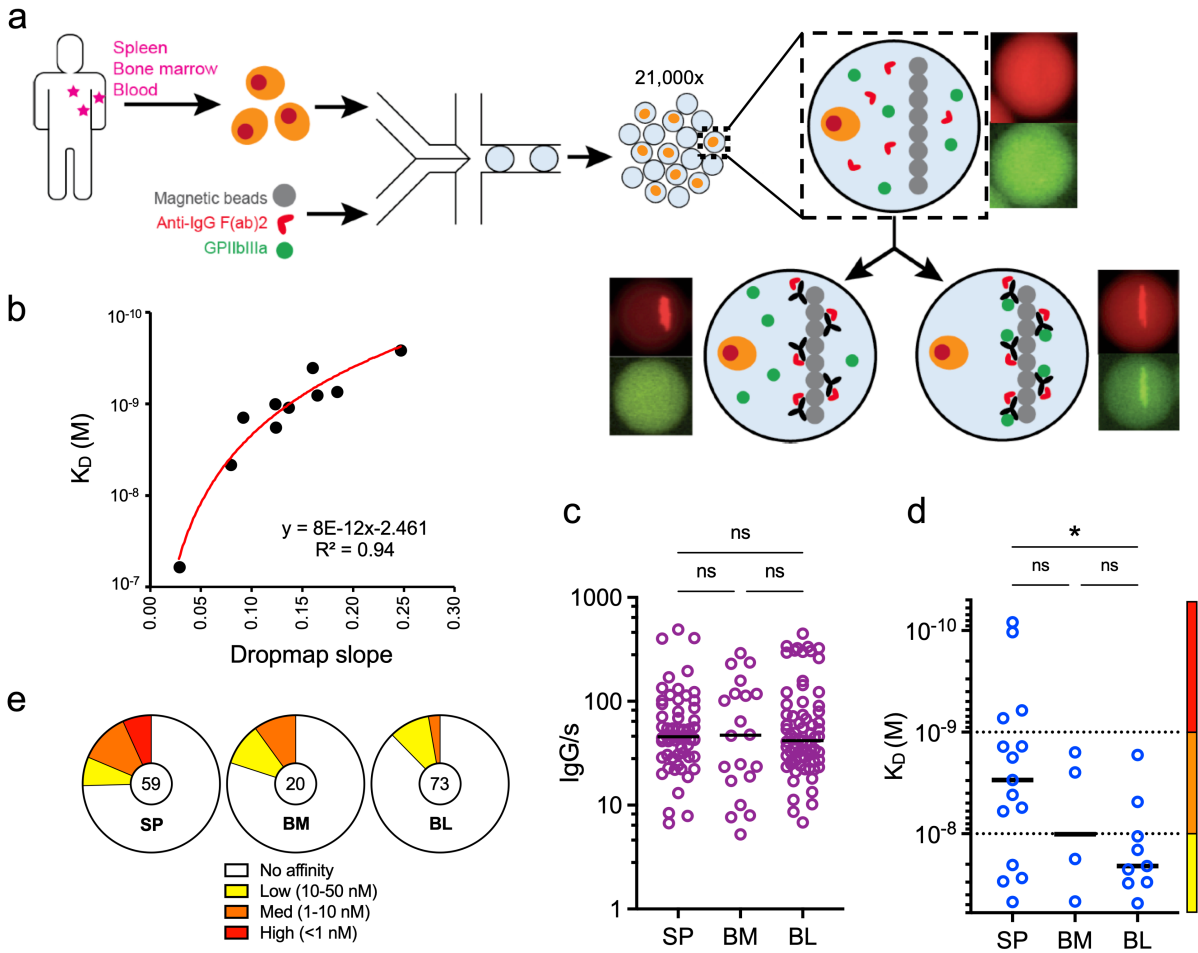
K.E. and J.B. have filed patents on the DropMap technology, and the inventors may receive payments related to exploitation of these under their employer's rewards-to-inventors scheme. M.M. received research funds from GSK, outside of the submitted work and personal fees from LFB and Amgen, outside of the submitted work. P.B. received consulting fees from Regeneron Pharmaceuticals, outside of the submitted work. All other authors declare no competing interests.

## REFERENCES

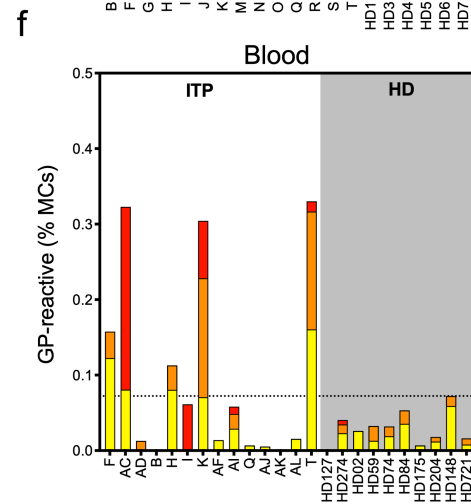
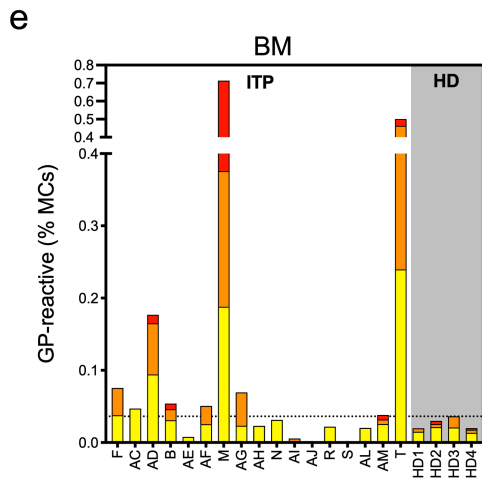
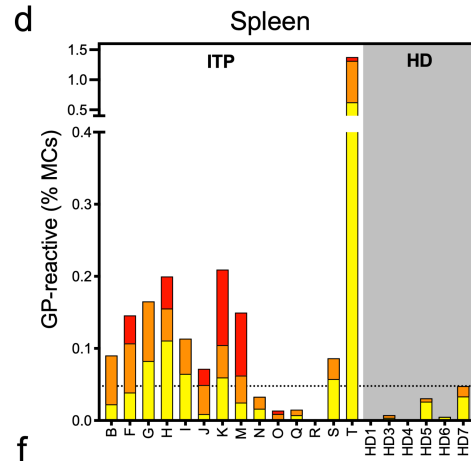
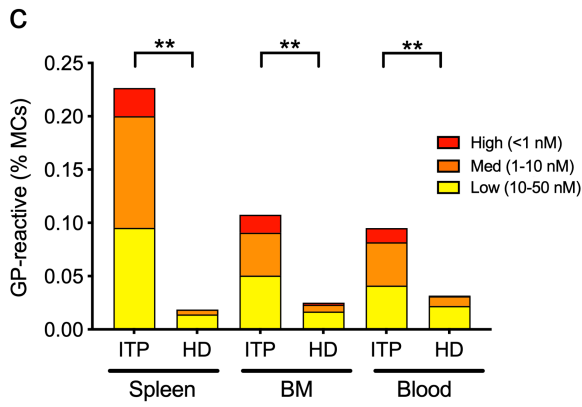
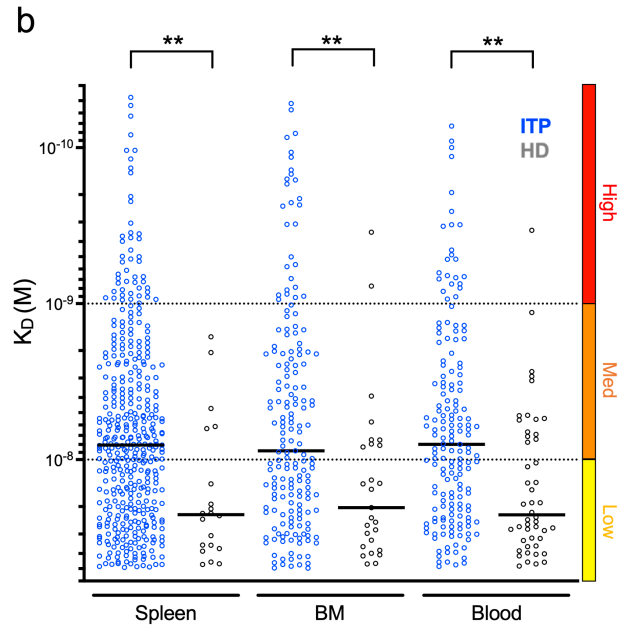
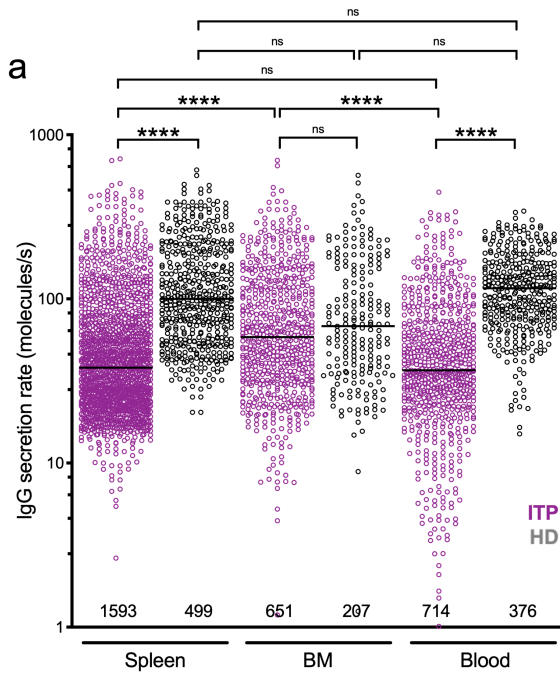
1. Audia S, Mahevas M, Samson M, Godeau B, and Bonnotte B. Pathogenesis of immune thrombocytopenia. *Autoimmun Rev.* 2017;16(6):620-32.
2. Arnold DM. Bleeding complications in immune thrombocytopenia. *Hematology Am Soc Hematol Educ Program.* 2015;2015:237-42.
3. Neunert C, Noroozi N, Norman G, Buchanan GR, Goy J, Nazi I, et al. Severe bleeding events in adults and children with primary immune thrombocytopenia: a systematic review. *J Thromb Haemost.* 2015;13(3):457-64.
4. He R, Reid DM, Jones CE, and Shulman NR. Spectrum of Ig classes, specificities, and titers of serum antiglycoproteins in chronic idiopathic thrombocytopenic purpura. *Blood.* 1994;83(4):1024-32.
5. Chan H, Moore JC, Finch CN, Warkentin TE, and Kelton JG. The IgG subclasses of platelet-associated autoantibodies directed against platelet glycoproteins IIb/IIIa in patients with idiopathic thrombocytopenic purpura. *Br J Haematol.* 2003;122(5):818-24.
6. Swinkels M, Rijkers M, Voorberg J, Vidarsson G, Leebeek FWG, and Jansen AJG. Emerging Concepts in Immune Thrombocytopenia. *Front Immunol.* 2018;9:880.
7. McMillan R, Tani P, Millard F, Berchtold P, Renshaw L, and Woods VL, Jr. Platelet-associated and plasma anti-glycoprotein autoantibodies in chronic ITP. *Blood.* 1987;70(4):1040-5.
8. Al-Samkari H, Rosovsky RP, Karp Leaf RS, Smith DB, Goodarzi K, Fogerty AE, et al. A modern reassessment of glycoprotein-specific direct platelet autoantibody testing in immune thrombocytopenia. *Blood Adv.* 2020;4(1):9-18.
9. Kuwana M, Okazaki Y, Kaburaki J, Kawakami Y, and Ikeda Y. Spleen is a primary site for activation of platelet-reactive T and B cells in patients with immune thrombocytopenic purpura. *J Immunol.* 2002;168(7):3675-82.
10. Neunert C, Terrell DR, Arnold DM, Buchanan G, Cines DB, Cooper N, et al. American Society of Hematology 2019 guidelines for immune thrombocytopenia. *Blood Adv.* 2019;3(23):3829-66.
11. Audia S, Rossato M, Santegoets K, Spijkers S, Wichers C, Bekker C, et al. Splenic TFH expansion participates in B-cell differentiation and antiplatelet-antibody production during immune thrombocytopenia. *Blood.* 2014;124(18):2858-66.
12. Audia S, Samson M, Guy J, Janikashvili N, Fraszczak J, Trad M, et al. Immunologic effects of rituximab on the human spleen in immune thrombocytopenia. *Blood.* 2011;118(16):4394-400.
13. Mahevas M, Patin P, Huetz F, Descatoire M, Cagnard N, Bole-Feysot C, et al. B cell depletion in immune thrombocytopenia reveals splenic long-lived plasma cells. *J Clin Invest.* 2013;123(1):432-42.
14. Kuwana M, Okazaki Y, and Ikeda Y. Detection of circulating B cells producing anti-GPIIb autoantibodies in patients with immune thrombocytopenia. *PLoS One.* 2014;9(1):e86943.
15. Arnold DM, Dentali F, Crowther MA, Meyer RM, Cook RJ, Sigouin C, et al. Systematic review: efficacy and safety of rituximab for adults with idiopathic thrombocytopenic purpura. *Ann Intern Med.* 2007;146(1):25-33.
16. Deshayes S, Khellaf M, Zarour A, Layese R, Fain O, Terriou L, et al. Long-term safety and efficacy of rituximab in 248 adults with immune thrombocytopenia: Results at 5 years from the French prospective registry ITP-ritux. *Am J Hematol.* 2019;94(12):1314-24.
17. Tjonnfjord E, Holme PA, Darne B, Khelif A, Waage A, Michel M, et al. Long-term outcomes of patients treated with rituximab as second-line treatment for adult immune thrombocytopenia - Follow-up of the RITP study. *Br J Haematol.* 2020;191(3):460-5.

18. Crickx E, Chappert P, Sokal A, Weller S, Azzaoui I, Vandenberghe A, et al. Rituximab-resistant splenic memory B cells and newly engaged naive B cells fuel relapses in patients with immune thrombocytopenia. *Sci Transl Med.* 2021;13(589).
19. Nutt SL, Hodgkin PD, Tarlinton DM, and Corcoran LM. The generation of antibody-secreting plasma cells. *Nat Rev Immunol.* 2015;15(3):160-71.
20. Lindquist RL, Niesner RA, and Hauser AE. In the Right Place, at the Right Time: Spatiotemporal Conditions Determining Plasma Cell Survival and Function. *Front Immunol.* 2019;10:788.
21. Chang HD, Tokoyoda K, Hoyer B, Alexander T, Khodadadi L, Mei H, et al. Pathogenic memory plasma cells in autoimmunity. *Curr Opin Immunol.* 2019;61:86-91.
22. Eyer K, Doineau RCL, Castrillon CE, Briseno-Roa L, Menrath V, Mottet G, et al. Single-cell deep phenotyping of IgG-secreting cells for high-resolution immune monitoring. *Nat Biotechnol.* 2017;35(10):977-82.
23. Bounab Y, Eyer K, Dixneuf S, Rybczynska M, Chauvel C, Mistretta M, et al. Dynamic single-cell phenotyping of immune cells using the microfluidic platform DropMap. *Nat Protoc.* 2020;15(9):2920-55.
24. Tiller T, Tsuiji M, Yurasov S, Velinzon K, Nussenzweig MC, and Wardemann H. Autoreactivity in human IgG+ memory B cells. *Immunity.* 2007;26(2):205-13.
25. Scheid JF, Mouquet H, Kofer J, Yurasov S, Nussenzweig MC, and Wardemann H. Differential regulation of self-reactivity discriminates between IgG+ human circulating memory B cells and bone marrow plasma cells. *Proc Natl Acad Sci U S A.* 2011;108(44):18044-8.
26. Costello C. An update on the role of daratumumab in the treatment of multiple myeloma. *Ther Adv Hematol.* 2017;8(1):28-37.
27. Mizuta S, Kawata T, Kawabata H, Yamane N, Mononobe S, Komai T, et al. VS38 as a promising CD38 substitute antibody for flow cytometric detection of plasma cells in the daratumumab era. *Int J Hematol.* 2019;110(3):322-30.
28. Fink K. Origin and Function of Circulating Plasmablasts during Acute Viral Infections. *Front Immunol.* 2012;3:78.
29. Schwartz SI. Role of splenectomy in hematologic disorders. *World J Surg.* 1996;20(9):1156-9.
30. Meyer S, Woodward M, Hertel C, Vlaicu P, Haque Y, Karner J, et al. AIRE-Deficient Patients Harbor Unique High-Affinity Disease-Ameliorating Autoantibodies. *Cell.* 2016;166(3):582-95.
31. Kuwana M, Iki S, and Urabe A. The role of autoantibody-producing plasma cells in immune thrombocytopenic purpura refractory to rituximab. *Am J Hematol.* 2007;82(9):846-8.
32. Hiepe F, and Radbruch A. Plasma cells as an innovative target in autoimmune disease with renal manifestations. *Nat Rev Nephrol.* 2016.
33. Alexander T, Sarfert R, Klotsche J, Kuhl AA, Rubbert-Roth A, Lorenz HM, et al. The proteasome inhibitor bortezomib depletes plasma cells and ameliorates clinical manifestations of refractory systemic lupus erythematosus. *Ann Rheum Dis.* 2015;74(7):1474-8.
34. Bontscho J, Schreiber A, Manz RA, Schneider W, Luft FC, and Kettritz R. Myeloperoxidase-specific plasma cell depletion by bortezomib protects from anti-neutrophil cytoplasmic autoantibodies-induced glomerulonephritis. *J Am Soc Nephrol.* 2011;22(2):336-48.
35. Espeli M, Bokers S, Giannico G, Dickinson HA, Bardsley V, Fogo AB, et al. Local renal autoantibody production in lupus nephritis. *J Am Soc Nephrol.* 2011;22(2):296-305.
36. Mumtaz IM, Hoyer BF, Panne D, Moser K, Winter O, Cheng QY, et al. Bone marrow of NZB/W mice is the major site for plasma cells resistant to dexamethasone and

- cyclophosphamide: implications for the treatment of autoimmunity. *J Autoimmun.* 2012;39(3):180-8.
37. Taddeo A, Khodadadi L, Voigt C, Mumtaz IM, Cheng Q, Moser K, et al. Long-lived plasma cells are early and constantly generated in New Zealand Black/New Zealand White F1 mice and their therapeutic depletion requires a combined targeting of autoreactive plasma cells and their precursors. *Arthritis Res Ther.* 2015;17:39.
  38. Suurmond J, Atisha-Fregoso Y, Marasco E, Barlev AN, Ahmed N, Calderon SA, et al. Loss of an IgG plasma cell checkpoint in patients with lupus. *J Allergy Clin Immunol.* 2019;143(4):1586-97.
  39. Chen D, Ireland SJ, Davis LS, Kong X, Stowe AM, Wang Y, et al. Autoreactive CD19+CD20- Plasma Cells Contribute to Disease Severity of Experimental Autoimmune Encephalomyelitis. *J Immunol.* 2016;196(4):1541-9.
  40. Even-Or E, Naser Eddin A, Shadur B, Dinur Schejter Y, Najajreh M, Zelig O, et al. Successful treatment with daratumumab for post-HSCT refractory hemolytic anemia. *Pediatr Blood Cancer.* 2020;67(1):e28010.
  41. Driouk L, Schmitt R, Peters A, Heine S, Girschick HJ, Strahm B, et al. Daratumumab therapy for post-HSCT immune-mediated cytopenia: experiences from two pediatric cases and review of literature. *Mol Cell Pediatr.* 2021;8(1):5.
  42. Lux A, Seeling M, Baerenwaldt A, Lehmann B, Schwab I, Repp R, et al. A humanized mouse identifies the bone marrow as a niche with low therapeutic IgG activity. *Cell Rep.* 2014;7(1):236-48.
  43. Grandjean CL, Garcia Z, Lemaitre F, Breart B, and Bousso P. Imaging the mechanisms of anti-CD20 therapy in vivo uncovers spatiotemporal bottlenecks in antibody-dependent phagocytosis. *Sci Adv.* 2021;7(8).
  44. Cines DB, and McMillan R. Pathogenesis of chronic immune thrombocytopenic purpura. *Curr Opin Hematol.* 2007;14(5):511-4.
  45. Chaturvedi S, Arnold DM, and McCrae KR. Splenectomy for immune thrombocytopenia: down but not out. *Blood.* 2018;131(11):1172-82.
  46. Cooper N, and Ghanima W. Immune Thrombocytopenia. *N Engl J Med.* 2019;381(10):945-55.
  47. Crickx E, Weill JC, Reynaud CA, and Mahevas M. Anti-CD20-mediated B-cell depletion in autoimmune diseases: successes, failures and future perspectives. *Kidney Int.* 2020;97(5):885-93.
  48. Audia S, and Bonnotte B. Emerging Therapies in Immune Thrombocytopenia. *J Clin Med.* 2021;10(5).
  49. Mazutis L, Gilbert J, Ung WL, Weitz DA, Griffiths AD, and Heyman JA. Single-cell analysis and sorting using droplet-based microfluidics. *Nat Protoc.* 2013;8(5):870-91.
  50. R Core Team. Vienna, Austria: R Foundation for Statistical Computing; 2017.

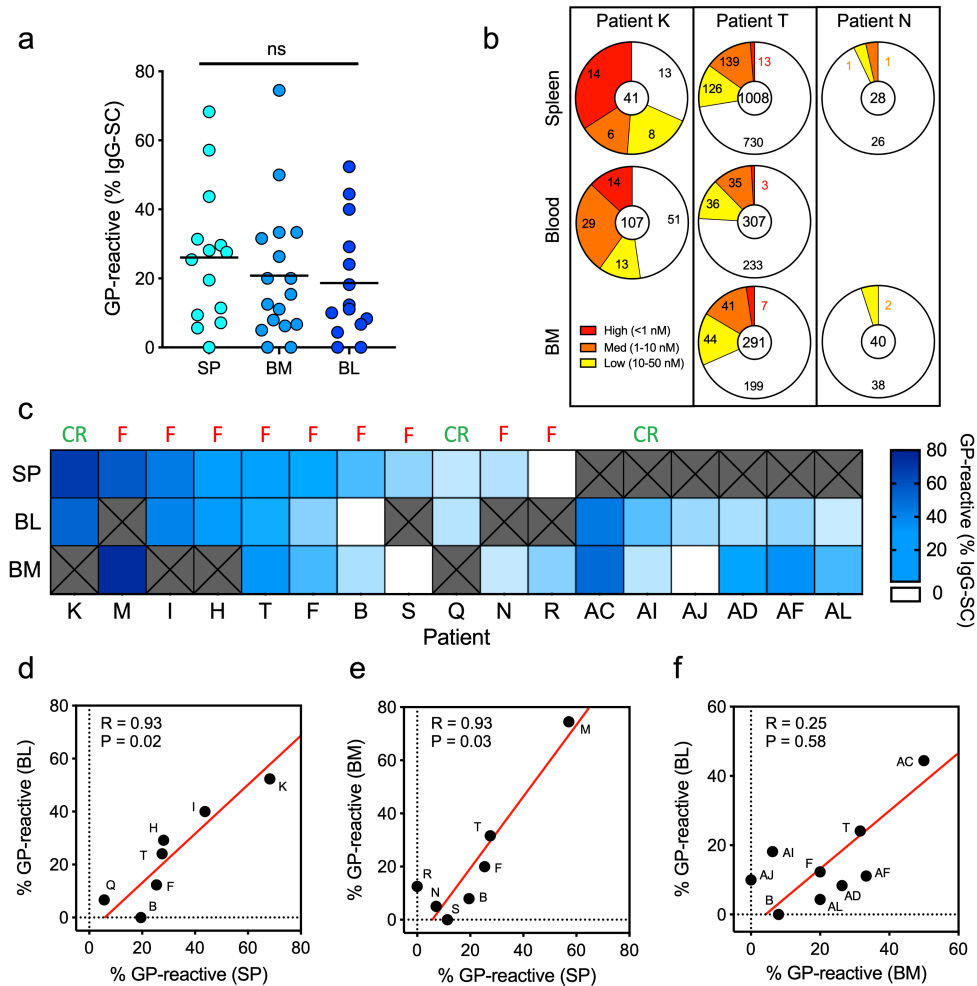


**Figure 1. Single cell analyses reveal secretion rate and  $\alpha$ IIb $\beta$ 3 affinity from IgG-SC.** (a) Schematic of the DropMap pipeline. Single mononuclear cells are encapsulated in droplets, together with magnetic beads coated with anti-kappa light chain nanobody (VHH), fluorescently-labeled anti-IgG F(ab')<sub>2</sub>-Alexa647 (red) and  $\alpha$ IIb $\beta$ 3-Alexa488 (green). Droplets are immobilized in the chip, exposed to a magnetic field to induce beads to form a beadline, and imaged over time. (b)  $\alpha$ IIb $\beta$ 3 affinity reference curve generated using anti- $\alpha$ IIb $\beta$ 3 mAbs with known  $K_D$  and values obtained from DropMap experiments using these mAbs. (c-e) DropMap analysis of spleen, blood and bone marrow samples from patient F at the time of splenectomy: (c) IgG secretion rate; (d) affinity for  $\alpha$ IIb $\beta$ 3 ( $K_D$ ) classified into “high” (red), “medium” (orange) and “low” (yellow) affinity with dotted lines separating these categories; (e) distribution of IgG-SC into low (yellow), medium (orange) and high (red) affinity binders to  $\alpha$ IIb $\beta$ 3 or non-binders (white), with total IgG-SC numbers indicated. (c-d) Single cell values and medians are plotted. NS (not significant); \* $P < 0.05$ ; \*\* $P < 0.01$ ; \*\*\* $P < 0.001$  using a Welch test and multiple testing P value adjustment. See Supplemental Table 2 for further details.

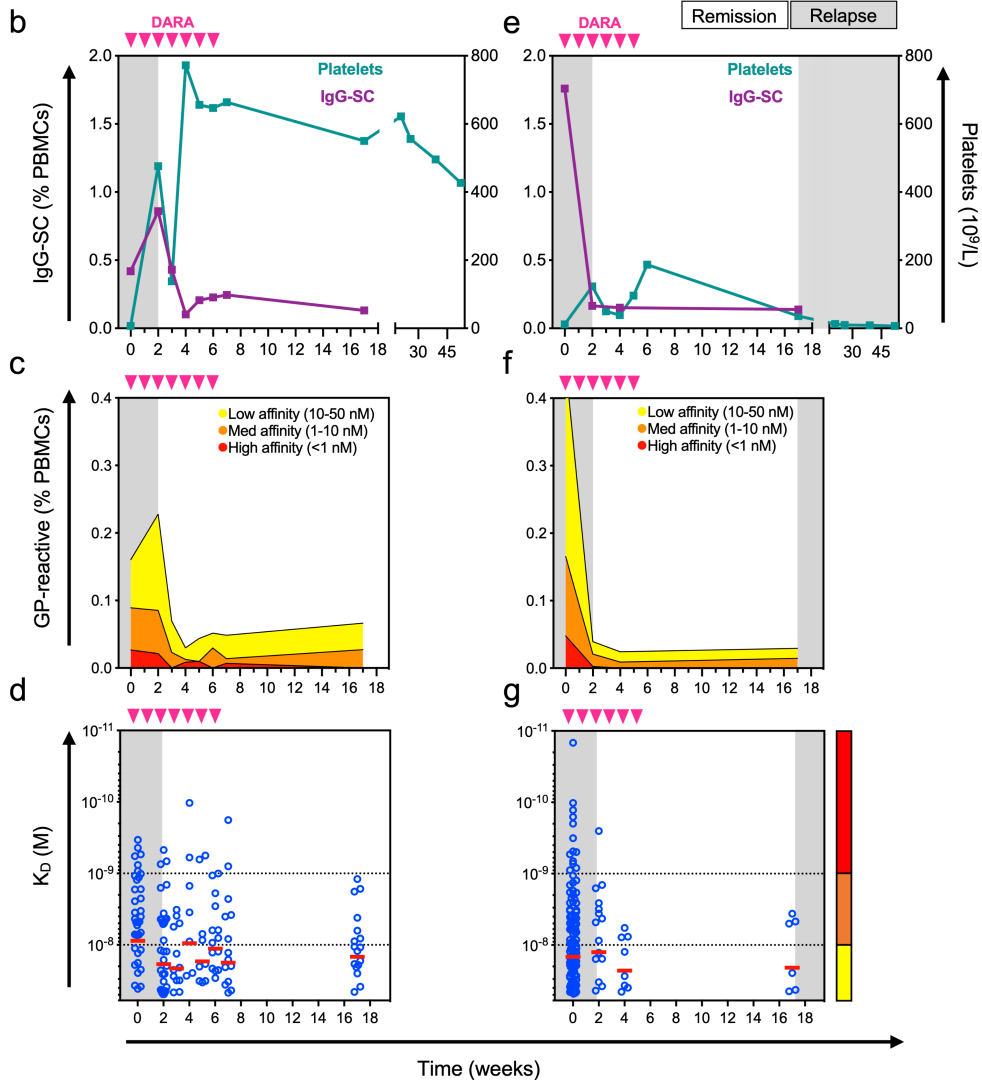
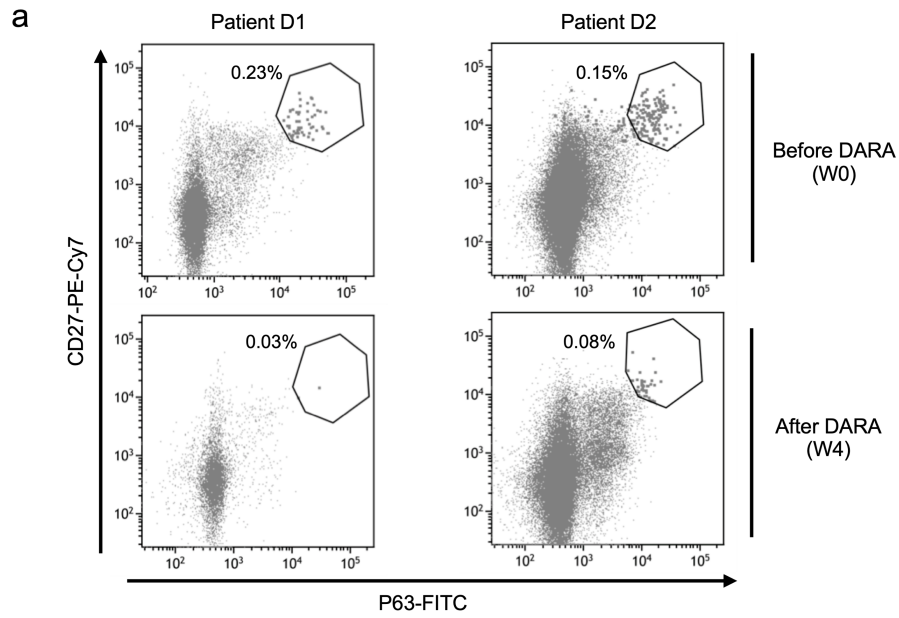




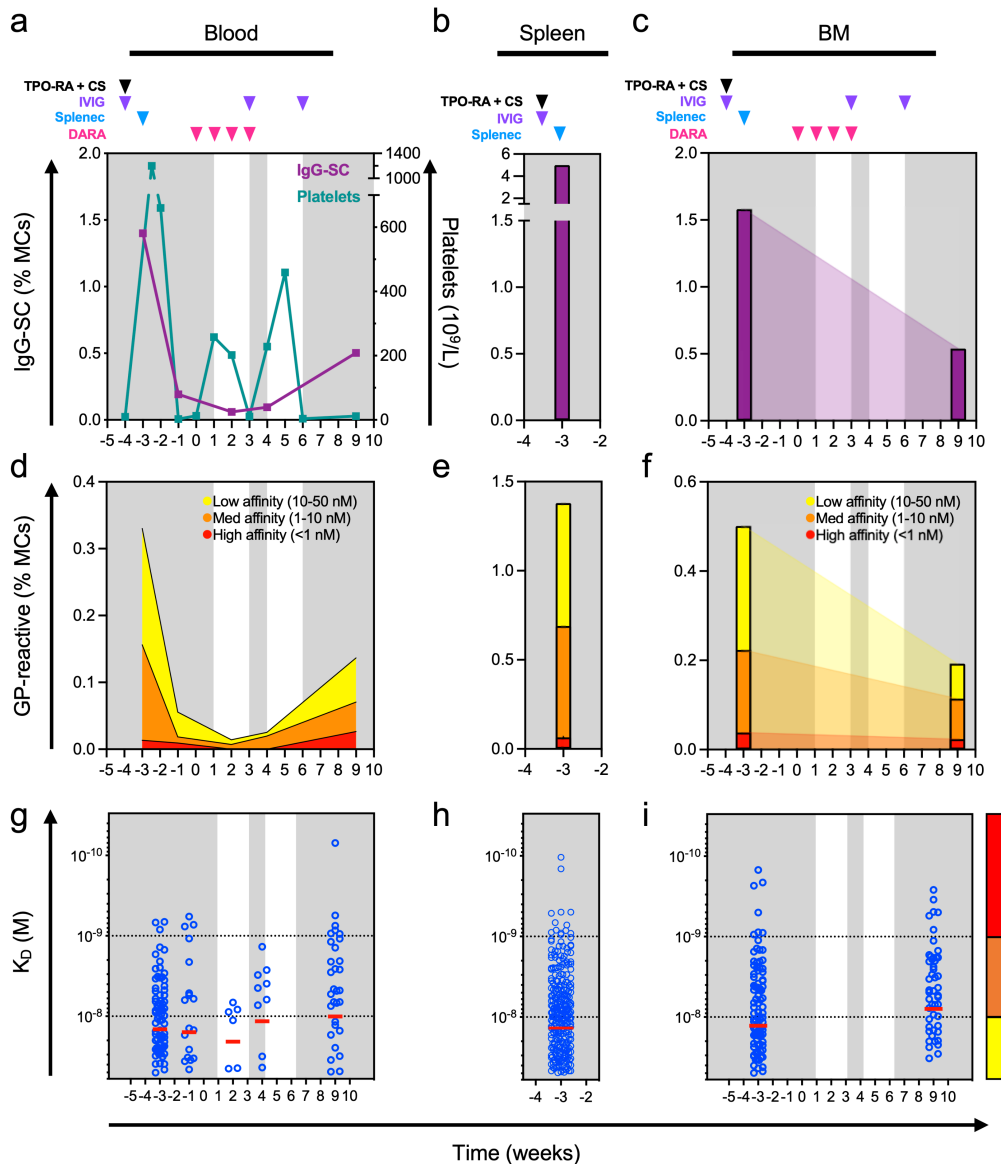
**Figure 2. Autoreactive ASCs with high and low affinity are present in the spleen, blood and BM of patients with ITP.** (a) IgG secretion rate and (b) affinity for  $\alpha$ IIB $\beta$ 3 of single ASCs from pooled data of patients with ITP and healthy donors (HD) for spleen (ITP, n=14; HD, n=6), bone marrow (ITP, n=17; HD, n=4) and blood (ITP, n=14; HD, n=10). Single cell values and medians are plotted. Total number of IgG-SC cells analyzed per compartment are indicated in (a). In (b), affinities are classified into “high” (red), “medium” (orange) and “low” (yellow) affinity with dotted lines separating these categories. (c) Frequency of  $\alpha$ IIB $\beta$ 3-reactive IgG-SC among mononuclear cells (MCs) classified into “high”, “medium” and “low” affinity from patients (ITP) and healthy donors (HD) according to (b). (d-f) Frequency of  $\alpha$ IIB $\beta$ 3-reactive IgG-SC among mononuclear cells (MCs) classified into “high”, “medium” and “low” affinity represented for individual patients (ITP) and healthy donors (HD) for (d) spleen, (e) bone marrow (BM) and (f) blood. (d-f) The dotted line marks the highest frequency found in a healthy donor. NS (not significant); \*P < 0.05; \*\*P < 0.01; \*\*\*P < 0.001 using post-hoc contrast analysis after linear (a-b) or logistic (c) modelisation and multiple testing P value adjustment. See Supplemental Table 2 for further details.



**Figure 3. Paired organs demonstrate a comparable autoantibody response.** (a) Frequency of  $\alpha$ IIB $\beta$ 3-reactive IgG-SC among total IgG-SC from individual patients with ITP. Each dot represents an individual. Values are pooled data from two replicates. NS (not significant); \* $P < 0.05$ ; \*\* $P < 0.01$ ; \*\*\* $P < 0.001$  using a Welch test and multiple testing P value adjustment. See Supplemental Table 2 for further details. (b) Distribution of IgG-SC into low (yellow), medium (orange) and high (red) affinity binders to  $\alpha$ IIB $\beta$ 3 or non-binders (white), with total IgG-SC numbers indicated, for paired samples of patients K, T and N. (c) Heatmap of the frequency of  $\alpha$ IIB $\beta$ 3-reactive cells among IgG-SC per patient, ordered from most frequent to less frequent in spleen for patients with a spleen sample, and ordered from most frequent to less frequent in blood for patients without a spleen sample. White boxes indicate undetectable reactivity for  $\alpha$ IIB $\beta$ 3, and “x” indicate absence of samples. Result of splenectomy is indicated: complete remission (CR) or failure (F). (d-f) Pearson correlation analysis of data from (c); scatterplots compare the frequency of  $\alpha$ IIB $\beta$ 3-reactive cells among paired organs. R and adjusted P values are indicated. Red line indicates the Reduced Major Axis.



**Figure 4. Anti-CD38 therapy deplete pathogenic ASC in patients with ITP. (a)** Flow cytometric identification of circulating CD27<sup>+</sup>P63<sup>+</sup> plasmablast/plasma cells from patients D1 and D2 before (top panel) and 4 weeks after (bottom panel) the start of daratumumab (DARA) treatment. **(b-g)** Kinetic follow-up of patient D1 (b-d) or patient D2 (e-g) blood samples for **(b,e)** frequency of IgG-SC among PBMCs and platelet levels, **(c,f)** frequency of  $\alpha$ IIB $\beta$ 3-reactive IgG-SC among PBMCs classified into “high” (red), “medium” (orange) and “low” (yellow) affinity, **(d,g)** affinity for  $\alpha$ IIB $\beta$ 3 of single IgG-SC. Displayed on the background is time spent in clinical remission (white) or relapse (grey). Daratumumab infusions are indicated by pink arrows. Single-cell affinity values and medians are plotted in (d) and (g).



**Figure 5. Failure of anti-CD38 treatment is associated with persistence of pathogenic ASC.** Kinetic follow-up of patient T. Displayed on the background is time spent in clinical remission (white) or relapse (grey). Drug infusions are indicated by arrows: thrombopoietin receptor agonist and cyclosporin (TPO-RA + CS; black), intravenous immunoglobulin (IVIG; purple), daratumumab (DARA; pink). The time of splenectomy is indicated by a blue arrow. **(a-c)** Frequency over time of IgG-SC among mononuclear cells in **(a)** blood with platelet levels indicated, **(b)** spleen and **(c)** bone marrow. **(d-f)** Frequency over time of  $\alpha$ IIb $\beta$ 3-reactive IgG-SC among mononuclear cells in **(d)** blood, **(e)** spleen and **(f)** bone marrow classified into “high”, “medium” and “low” affinity. **(g-i)** Affinity over time for  $\alpha$ IIb $\beta$ 3 of single IgG-SC in **(g)** blood, **(h)** spleen and **(i)** bone marrow. Single-cell affinity values (blue dots) and medians (red lines) are plotted.

## TABLES

**Table 1. Characteristics of patients with ITP.**

Patient ID	Sex	Age	ITP duration (months)	Clinical pattern	RTX (months from last infusion)	RTX efficacy	Current therapy	Past treatment history	SPL Outcome
G	F	22	240	chronic	41	CR <sup>§</sup>	TPOra CS IVIG	CS, IVIG, RTX, TPOra	CR
J	M	24	45	chronic	1*	Failure*	Vinblastine, tacrolimus	CS, IVIG, OFA, TPOra, MMF, Tacrolimus	CR
K	F	50	37	chronic	-	-	TPOra	CS, IVIG, TPOra	CR
O	M	36	43	chronic	32	Failure	CS, IGIV	CS, IVIG, RTX, TPOra, dapsone, danatrol	CR
Q	M	37	6	persistent	2	Failure	TPOra CS IVIG azathioprine	CS, IVIG, RTX, TPOra, AZA	CR
AI	F	79	396	chronic	2	Failure	CS, IGIV, TPOra	CS, IGIV, TPOra	CR
AM	M	75	192	chronic	108	Failure	CS (3 days) <sup>#</sup> and TPOra	CS, IGIV, TPOra	CR
AG	F	55	>24	chronic	12	Response, relapse	. <sup>‡</sup>	CS, IGIV, TPOra	CR
B	F	60	36	chronic	8	Failure	TPOra CS lviG	CS, IVIG, RTX, TPOra, dapsone	Failure
F	M	73	12	chronic	8	Failure	TPOra MMF IVIG	CS, IVIG, RTX, TPOra, AZA	Failure
H	F	21	30	chronic	7	Failure	TPOra IVIG	CS, IVIG, RTX, TPOra	Failure
I	M	22	36	chronic	-	-	-	CS, TPOra	Failure
M	M	70	17	chronic	4	Failure	CS	CS, IVIG, RTX, TPOra	Failure
N	M	33	192	chronic	12	Partial response	CS, IGIV, vincristine	CS, IGIV, TPOra, RTX, vincristine, dapsone, MMF	Failure
R	M	31	7	persistent	5	Failure	IGIV MMF TPOra	CS, IVIG, RTX, TPOra, MMF	Failure
S	M	26	7	persistent	4	Failure	CS, IGIV	CS, IVIG, RTX, TPOra, MMF	Failure
T (D3)	F	20	174	chronic	10	Failure	Daratumumab	CS, IVIG, RTX, TPOra, MMF, dapsone, splenectomy	Failure
D1	M	34	95	chronic	3	Failure	Daratumumab	CS, IVIG, RTX, TPOra, MMF, CSA, HCQ, splenectomy	Failure
AC	F	68	24	chronic	-	-	TPOra	CS, TPOra	-
AD	M	65	0	Acute	-	-	No	-	-
AE	F	30	156	chronic	1	Failure	RTX (M1)	CS, IGIV, vincristine, RTX, TPOra Hodgkin disease (chemotherapy and autologous stem cell transplantation 14 years before current sample)	-
AF	F	77	0	Acute	-	-	No	-	-
AH	F	72	0	Acute	-	-	CS (1 day)	CS (1 day) <sup>#</sup>	-
AJ	F	77	12	chronic	9	Failure	Mycophenolate mofetil	CS, IGIV, TPOra, RTX, CSA, MMF	-
AK	F	66	1	Acute	-	-	CS (3 days)	CS (3 days) <sup>#</sup>	-
AL	M	51	>24	chronic	12	Response, relapse	TPOra	CS, IGIV, TPOra	-
D2	F	35	128	chronic	98	Failure	Daratumumab	CS, IVIG, RTX, TPOra, MMF, CSA, AZA, EDX	-
R-406	F	77	7	persistent	-	CR	CS	CS, TPOra, dapsone	-
R-429	M	74	3	persistent	-	CR	CS, IGIV	CS, IGIV	-
R-367	M	75	4	persistent	-	CR	CS, IGIV	CS, IGIV	-
R-387	F	78	2	newly diagnosed	-	CR	TPOra, CSA	CS, IGIV, TPOra, CSA	-

<sup>§</sup>duration unknown. \*Patient J received anti-CD20 mAb ofatumumab (ofa) instead of rituximab. <sup>#</sup>Duration of some drug treatments for some patients are indicated in parenthesis. <sup>‡</sup>Splenectomy performed 1 month

after rituximab arrest. *Abbreviations:* RTX, rituximab; ofa, ofatumumab; CR, complete response; -, none or not administered; TPO-RA, thrombopoietin receptor agonist; CS, corticosteroids; IVIG, intravenous immunoglobulins; AZA, azathioprine; MMF, mycophenolate mofetil.