



HAL
open science

Mosquito-bacteria interactions during larval development trigger metabolic changes with carry-over effects on adult fitness

Émilie Giraud, Hugo Varet, Rachel Legendre, Odile Sismeiro, Fabien Aubry, Stéphanie Dabo, Laura B Dickson, Claire Valiente Moro, Louis A Lambrechts

► To cite this version:

Émilie Giraud, Hugo Varet, Rachel Legendre, Odile Sismeiro, Fabien Aubry, et al.. Mosquito-bacteria interactions during larval development trigger metabolic changes with carry-over effects on adult fitness. *Molecular Ecology*, 2022, 31 (5), pp.1444-1460. 10.1111/mec.16327 . pasteur-03507539

HAL Id: pasteur-03507539

<https://pasteur.hal.science/pasteur-03507539>

Submitted on 3 Jan 2022

HAL is a multi-disciplinary open access archive for the deposit and dissemination of scientific research documents, whether they are published or not. The documents may come from teaching and research institutions in France or abroad, or from public or private research centers.

L'archive ouverte pluridisciplinaire **HAL**, est destinée au dépôt et à la diffusion de documents scientifiques de niveau recherche, publiés ou non, émanant des établissements d'enseignement et de recherche français ou étrangers, des laboratoires publics ou privés.



Distributed under a Creative Commons Attribution - NonCommercial 4.0 International License

DR. LOUIS LAMBRECHTS (Orcid ID : 0000-0001-5958-2138)

Article type : Original Article

Mosquito-bacteria interactions during larval development trigger metabolic changes with carry-over effects on adult fitness

Émilie Giraud¹, Hugo Varet^{2,3}, Rachel Legendre^{2,3}, Odile Sismeiro^{3,4}, Fabien Aubry¹, Stéphanie Dabo¹, Laura B. Dickson^{1,5}, Claire Valiente Moro⁶, Louis Lambrechts^{1*}

¹Insect-Virus Interactions Unit, Institut Pasteur, UMR2000, CNRS, 75015 Paris, France

²Hub de Bioinformatique et Biostatistique – Département Biologie Computationnelle, Institut Pasteur, 75015 Paris, France

³Plate-forme Technologique Biomix – Centre de Ressources et Recherches Technologiques (C2RT), Institut Pasteur, 75015 Paris, France

⁴Unité Biologie des Bactéries Pathogènes à Gram-positif, CNRS UMR2001 Microbiologie Intégrative et Moléculaire, Institut Pasteur, 75015 Paris, France

⁵Department of Microbiology and Immunology, University of Texas Medical Branch, Galveston, TX 77555, USA

⁶Univ Lyon, Université Claude Bernard Lyon 1, CNRS, INRAE, VetAgro Sup, UMR Écologie Microbienne, F-69622 Villeurbanne, France

*Corresponding author: Louis Lambrechts (louis.lambrechts@pasteur.fr)

Running head: Bacterial carry-over effects in mosquitoes

Keywords: Microbiota; *Aedes aegypti*; transcriptome; gnotobiotic; vector competence; triglyceride.

This article has been accepted for publication and undergone full peer review but has not been through the copyediting, typesetting, pagination and proofreading process, which may lead to differences between this version and the [Version of Record](#). Please cite this article as [doi: 10.1111/MEC.16327](https://doi.org/10.1111/MEC.16327)

This article is protected by copyright. All rights reserved

Abstract

In animals with distinct life stages such as holometabolous insects, adult phenotypic variation is often shaped by the environment of immature stages, including their interactions with microbes colonizing larval habitats. Such carry-over effects were previously observed for several adult traits of the mosquito *Aedes aegypti* after larval exposure to different bacteria, but the mechanistic underpinnings are unknown. Here, we investigated the molecular changes triggered by gnotobiotic larval exposure to different bacteria in *Ae. aegypti*. We initially screened a panel of 16 bacterial isolates from natural mosquito breeding sites to determine their ability to influence adult life-history traits. We subsequently focused on four bacterial isolates (belonging to *Flavobacterium*, *Lysobacter*, *Paenibacillus*, and *Enterobacteriaceae*) with significant carry-over effects on adult survival and found that they were associated with distinct transcriptomic profiles throughout mosquito development. Moreover, we detected carry-over effects at the level of gene expression for the *Flavobacterium* and *Paenibacillus* isolates. The most prominent transcriptomic changes in gnotobiotic larvae reflected a profound remodeling of lipid metabolism, which translated into phenotypic differences in lipid storage and starvation resistance at the adult stage. Together, our findings indicate that larval exposure to environmental bacteria trigger substantial physiological changes that impact adult fitness, uncovering a possible mechanism underlying carry-over effects of mosquito-bacteria interactions during larval development.

Introduction

The life cycle of holometabolous insects is characterized by complete metamorphosis of the final immature stage into a markedly distinct mature stage. The holometabolous life cycle may have evolved to prevent larvae from competing with adults because they generally inhabit different ecological niches (Moran, 1994). The environment of immature stages, however, has a profound influence on adult life history through various 'carry-over effects' (Crean, Monro, & Marshall, 2011; De Block, 2005). Both abiotic factors (e.g., temperature, nutrient availability) and biotic interactions (e.g., predation, competition, mutualism) of the larval environment contribute to determine adult traits (Ezeakacha & Yee, 2019; Johnson, 2008; Marshall & Morgan, 2011; Vonesh, 2005).

Mosquitoes are holometabolous insects of particular importance for public health because they serve as vectors for several human pathogens. For instance, *Aedes aegypti* is a widely distributed mosquito species (Kraemer et al., 2019) whose recent evolution fueled the emergence of dengue virus (DENV), Zika virus (ZIKV) and other medically important arthropod-borne viruses (Aubry et al., 2020; Brady & Hay, 2020). Studies in *Ae. aegypti* and other mosquitoes have shown that the larval environment can significantly influence adult life history and physiology. For example, larval rearing temperature, diet and crowding determine body size, longevity, energy reserves and immune function at the adult stage (Dittmer & Gabrieli, 2020; Joy, Arik, Corby-Harris, Johnson, & Riehle, 2010; Price, Schilkey, Ulanov, & Hansen, 2015; Sasmita, Tu, Bong, & Neoh, 2019; Telang, Qayum, Parker, Sacchetta, & Byrnes, 2012). In addition, the larval environment can affect the ability of adult mosquitoes to acquire and transmit arboviruses (i.e., vector competence) (Alto & Lounibos, 2013). For instance, larval competition (Alto, Lounibos, Higgs, & Juliano, 2005; Alto, Lounibos, Mores, & Reiskind, 2008), food availability (Buckner, Alto, & Lounibos, 2016), rearing temperature (Muturi, Blackshear, & Montgomery, 2012; Westbrook, Reiskind, Pesko, Greene, & Lounibos, 2010), and exposure to insecticides (Moltini-Conclois, Stalinski, Tetreau, Despres, & Lambrechts, 2018) can modulate vector competence at the adult stage, although these effects are often complex and interdependent.

In recent years, it has become clear that environmental microbes colonizing mosquito larval habitats play a major role in both larval nutrition and development (Guegan et al., 2018; Ranasinghe & Amarasinghe, 2020). Successful adult emergence critically depends on larval exposure to live bacteria (Coon, Brown, & Strand, 2016; Coon, Vogel, Brown, & Strand, 2014; Vogel, Valzania, Coon, Brown, & Strand, 2017), although supplementing axenic (i.e., germ-free) mosquito larvae with a specific diet can partially restore development (Correa, Matusovsky, Brackney, & Steven, 2018). The mechanisms underlying the effects of mosquito-microbiota interactions on immature development remain to be fully elucidated. It has been proposed that bacteria in the larval gut provide the essential micronutrient riboflavin (vitamin B₂), the lack of which results in gut hypoxia and developmental arrest (Coon et al., 2017; Valzania, Coon, Vogel, Brown, & Strand, 2018; Wang

et al., 2021). Other studies suggested that the role of bacteria during larval development is primarily nutritional (Correa et al., 2018), possibly by contributing to folate biosynthesis and/or by enhancing energy storage (Romoli, Schonbeck, Hapfelmeier, & Gendrin, 2021). This is consistent with work in *Drosophila* showing that larval gut bacteria cooperate to establish an integrated nutritional network supporting host growth (Consuegra, Grenier, Akherraz, et al., 2020; Consuegra, Grenier, Baa-Puyoulet, et al., 2020).

Mosquito-bacteria interactions at the larval stage can also impact adult traits via carry-over effects. In a previous study, we found that *Ae. aegypti* exposure to different natural bacterial isolates during larval development resulted in differences in adult body size, antibacterial activity and DENV vector competence (Dickson et al., 2017). Given that the bacterial microbiota of wild larvae varies substantially between natural microhabitats (Coon et al., 2016; Dada et al., 2014; Dickson et al., 2017; Hery et al., 2021), mosquitoes developing in different breeding sites are thus expected to contribute differentially to pathogen transmission. To date, the mechanism(s) underlying such carry-over effects of mosquito-bacteria interactions at the larval stage are unknown. Of note, we previously observed that larval exposure to bacteria mediated carry-over effects in the absence of trans-stadial transfer of the bacteria through metamorphosis (Dickson et al., 2017). This is consistent with another study in which larval exposure to bacteria modulated infection by DENV and ZIKV in adult *Ae. aegypti* in the absence of bacterial transfer between the life stages (Carlson, Short, Anglero-Rodriguez, & Dimopoulos, 2020). These observations support the hypothesis that carry-over effects result from indirect consequences of mosquito-bacteria interactions at the larval stage through physiological changes of the host that persist in later developmental stages.

Here, we investigated the physiological changes associated with carry-over effects of larval exposure to bacteria in *Ae. aegypti*. We screened a collection of bacteria isolated during our previous study (Dickson et al., 2017) for carry-over effects on adult phenotypes. Larvae were reared under gnotobiotic conditions in mono-association (i.e., in presence of a single bacterial isolate) until the pupal stage, after which adult mosquitoes were maintained and tested under standard (non-sterile) insectary conditions. We focused on four bacterial isolates that mediated significant carry-over effects on adult life-history traits and compared the transcriptomic profiles of larvae, pupae and adults between the four gnotobiotic treatments. Our results indicate that exposure to different bacteria during larval development is associated with major transcriptomic changes, some of which reflect a profound remodeling of lipid metabolism with functional repercussions on adult fitness.

Materials and Methods

Ethics

This study used human blood samples to prepare mosquito artificial infectious blood meals. For that purpose, healthy blood donor recruitment was organized by the local investigator assessment using medical history, laboratory results and clinical examinations. Biological samples were supplied through the participation of healthy adult volunteers at the ICAReB biobanking platform (BB-0033-00062/ICAReB platform/Institut Pasteur, Paris/BBMRI AO203/[BIORESOURCE]) of the Institut Pasteur in the CoSIImmGen and Diagmicoll protocols, which had been approved by the French Ethical Committee Ile-de-France I. The Diagmicoll protocol was declared to the French Research Ministry under reference 343 DC 2008-68 COL 1. All adult subjects provided written informed consent.

Bacterial isolates

All the bacterial isolates used in this study were previously derived from the water of natural *Ae. aegypti* breeding sites in both sylvatic and domestic habitats in Lopé, Gabon in 2014 (Dickson et al., 2017). A subset of 16 bacterial isolates was initially selected to represent the taxonomical diversity found in both habitats with a balanced proportion of Gram-negative and Gram-positive cultivable bacteria. Based on their 16S ribosomal RNA gene sequence, the eight selected bacterial isolates from sylvatic breeding sites were taxonomically identified as *Bosea*, *Cellulomonas*, *Enterobacteriaceae*, *Flavobacterium*, *Leifsonia*, *Paenibacillus*, *Pseudoxanthomonas* and *Rahnella*. The eight selected bacterial isolates from domestic breeding sites were identified as *Ancylobacter*, *Cloacibacterium*, *Flavobacterium*, *Leifsonia*, *Lysobacter*, *Paenibacillus*, *Rummeliibacillus* and *Stenotrophomonas*. These bacterial isolates were used to generate the gnotobiotic mosquitoes.

Gnotobiotic mosquitoes

All mosquitoes used in this study were from the 16th and 17th laboratory generations of an *Ae. aegypti* colony derived from a natural population originally sampled in Thép Na Korn, Kamphaeng Phet Province, Thailand, in 2013. The colony was maintained under controlled insectary conditions ($28 \pm 1^\circ\text{C}$; relative humidity, $70 \pm 5\%$; 12h:12h light:dark cycle). Gnotobiotic mosquitoes were generated as previously described (Dickson et al., 2017). Briefly, eggs were scraped off the blotting paper on which they were laid into a 50-ml conical tube. Eggs were surface sterilized inside a microbiological safety cabinet by sequential incubations in 70% ethanol for 5 min, 3% bleach for 3 min, and 70% ethanol for 5 min, followed by three washes in sterile water. Non-axenic controls were generated by omitting the surface sterilization step. Eggs were allowed to hatch for 1 hour in sterile water in a vacuum chamber and transferred to sterile 25-ml tissue-culture flasks with filter-top lids and maintained in 15 ml of sterile water. Axenic and non-axenic larvae were seeded to a density of 16 ± 4 per flask. The larvae were fed every other day with 60 μl of sterile (autoclaved) fish food, consisting of ground Tetramin (Tetra) in sterile water at a concentration of 100 $\mu\text{g}/\text{ml}$. Axenic L₁ larvae were made gnotobiotic by adding 5×10^5 CFU/ml of a single bacterial isolate to the flask. Flasks of axenic larvae were maintained for the duration of

the experiment and manipulated in the same way to serve as negative controls. Axenic larvae can develop if they are provided a specific diet (Correa et al., 2018) or maintained in darkness (Wang et al., 2021), however they do not develop otherwise (Coon et al., 2014; Dickson et al., 2017). Therefore, presence of larvae beyond the first instar in the axenic treatment is indicative of bacterial contamination. Unlike other studies in which the main comparison is between gnotobiotic and axenic treatments, the present study relied primarily on the comparison between different gnotobiotic treatments. During growth, flasks of axenic, non-axenic and gnotobiotic larvae were kept in a cell-culture incubator at $28 \pm 1^\circ\text{C}$ under a 12h:12h light:dark cycle. Upon pupation, gnotobiotic and non-axenic mosquitoes were transferred to non-sterile insectary conditions ($28^\circ\text{C} \pm 1^\circ\text{C}$, $70 \pm 5\%$ relative humidity, 12h:12h light:dark cycle). Adults were kept in 1-pint cardboard cups with permanent access to 10% sucrose solution. Adult *Ae. aegypti* females maintained in these insectary conditions were previously shown to share the same gut bacterial microbiota (Dickson et al., 2018).

Life-history traits

Pupation rate was assessed by counting the number of new pupae daily. Adult survival was monitored by counting dead mosquitoes daily for 75 days. The adult body size of females was estimated by measuring their wing length (Koella & Lyimo, 1996). Wings were removed and taped onto a sheet of paper. After scanning the paper, wing lengths were measured from the tip (excluding the fringe) to the distal end of the allula (Linenberg, Christophides, & Gendrin, 2016) using the Fiji software (Schindelin et al., 2012).

Bacterial load

To quantify the bacterial load of gnotobiotic and non-axenic mosquitoes, individual L₄ larvae, pupae and newly emerged adults (N=5-23 per condition) were surface sterilized in 70% ethanol for 10 min and rinsed three times in sterile phosphate-buffered saline (PBS). The samples were homogenized in 180 μl of ATL Buffer (Qiagen) with ~20 1-mm glass beads (BioSpec) in a Precellys 24 grinder (Bertin Technologies) for 30 sec at 6,000 rpm. DNA was extracted with the Blood & Tissue kit (Qiagen) following the manufacturer's instructions. The amount of bacterial DNA was measured by quantitative PCR using the QuantiTect SYBR Green kit (Qiagen) on a LightCycler 96 real-time thermocycler (Roche) following a published method (de La Llave et al., 2011; Giraud, Martin, Yakob, & Rogers, 2019). The *Ae. aegypti* ribosomal protein-coding gene *RP49* (*AAEL003396*) was used for normalization (Gentile, Lima, & Peixoto, 2005). The relative DNA quantity was calculated as $(E_{16S})^{\Delta\text{Cq}(16S)} / (E_{RP49})^{\Delta\text{Cq}(RP49)}$, with E being the PCR efficiency of each primer pair and ΔCq being the Cq difference between control and sample for each gene (Pfaffl, 2001). The sequences of all primers used in this study are provided in Table S3.

Bacterial identification

To determine if the bacterial isolates used for the gnotobiotic rearing persisted after the transfer of pupae to non-sterile insectary conditions, live cultivable bacteria were identified in adults 2-3 days after their emergence. Individual mosquitoes were surface sterilized in 70% ethanol for 10 min and rinsed three times in sterile PBS. The samples were homogenized in 200 μ l of sterile PBS with ~20 1-mm glass beads (BioSpec) in a Precellys 24 grinder (Bertin Technologies) for 30 sec at 6,000 rpm. For each mosquito, 30 μ l of homogenate were plated onto an agar plate made with LB medium + NaCl (5 mg/ml) and incubated for 2 days at 30°C. Individual bacterial colonies (N=6-10) were picked from the plates and grown in 3 ml of liquid LB medium at 30°C. The bacterial suspension was centrifuged for 10 min at 7,500 rpm and the pellet was homogenized in 180 μ l of ATL buffer (Qiagen). Bacterial DNA was extracted and purified with the Blood & Tissue kit (Qiagen) following the manufacturer's instructions. The entire 16S region was amplified by PCR and sequenced by Sanger sequencing as previously described (Dickson et al., 2017). Sequencing chromatograms were manually examined and assigned taxonomically at the genus level by BLAST alignment to the GenBank database (<http://www.ncbi.nlm.nih.gov/BLAST>).

Vector competence

Vector competence assays were conducted as previously described (Fontaine, Jiolle, Moltini-Conclois, Lequime, & Lambrechts, 2016) using DENV type 1 (DENV-1) isolate KDH0026A (Fansiri et al., 2013). Briefly, virus stock was prepared from the supernatant of an infected culture of C6/36 (*Aedes albopictus*) cells. Gnotobiotic larvae were reared as described above, except that egg hatching was staggered to synchronize adult emergence between gnotobiotic treatments with different developmental times. The day before the infectious blood meal, 5- to 7-day-old females were deprived of sucrose solution and transferred to a biosafety level-3 facility. They were offered an artificial infectious blood meal for 15 min using a membrane-feeding system (Hemotek) with pig intestine as the membrane. The artificial infectious blood meal consisted of a 2:1 mixture of washed human erythrocytes and viral suspension at a final concentration of 7.5×10^5 and 6.0×10^5 focus-forming units (FFU)/ml in two separate experiments, respectively. The blood meal was supplemented with 10 mM adenosine triphosphate to stimulate blood uptake by mosquitoes. Fully engorged females were sorted into 1-pint carton boxes, and kept under controlled conditions (28°C \pm 1°C, 70 \pm 5% relative humidity, 12h:12h light:dark cycle) in a climatic chamber with permanent access to a 10% sucrose solution. After 14 days of incubation, the head and body of DENV-exposed mosquitoes were separated from each other to determine infection rate (the proportion of blood-fed mosquitoes with a DENV-positive body), dissemination rate (the proportion of infected mosquitoes with a DENV-positive head) and dissemination titer (the amount of infectious virus in the head tissues of DENV-infected mosquitoes). Bodies were homogenized individually in 400 μ l of RAV1 RNA extraction buffer (Macherey-Nagel) during two rounds of 30 sec at 5,000 rpm in a TissueLyser II grinder (Qiagen). Total RNA was extracted using the NucleoSpin 96 kit (Macherey-Nagel) following the manufacturer's instructions. Total RNA was converted to complementary DNA (cDNA) using M-MLV reverse

transcriptase (Invitrogen) and random hexamers. The cDNAs were amplified by PCR as described below, using a primer pair targeting the DENV-1 NS5 gene (Table S3). The heads from DENV-infected bodies were titrated by focus-forming assay in C6/36 cells as previously described (Fontaine et al., 2016). Briefly, heads were homogenized individually in 300 μ l of Leibovitz's L-15 medium supplemented with 2 \times Antibiotic-Antimycotic (Life Technologies) and clarified by centrifugation. C6/36 cells were seeded into 96-well plates and incubated 24h to reach sub-confluence. Each well was inoculated with 40 μ l of head homogenate in 10-fold dilutions and incubated for 1 hour at 28°C. Cells were overlaid with a 1:1 mix of carboxymethyl cellulose and Leibovitz's L-15 medium supplemented with 0.1% penicillin (10,000 U/ml)/streptomycin (10,000 μ g/ml), 1 \times non-essential amino acids, 2 \times Antibiotic-Antimycotic (Life Technologies), and 10% fetal bovine serum (FBS). After three days of incubation at 28°C, cells were fixed with 3.7% formaldehyde, washed three times in PBS, and incubated with 0.5% Triton X-100 in PBS. Cells were incubated with a mouse anti-DENV complex monoclonal antibody (MAB8705, Merck Millipore), washed three times with PBS, and incubated with an Alexa Fluor 488-conjugated goat anti-mouse antibody (Life Technologies). FFU were counted under a fluorescence microscope.

Transcriptome sequencing

Triplicate pools of 12 L₁ axenic larvae, 12 L₄ gnotobiotic larvae, 12 pupae and 12 freshly emerged adult mosquitoes (6 males + 6 females) were surface sterilized with 70% ethanol and washed three times in PBS. They were transferred to a tube containing 800 μ l of Trizol (Life Technologies) and ~20 1-mm glass beads (BioSpec). Samples were homogenized for 30 sec at 6,000 rpm in a Precellys 24 grinder (Bertin Technologies). RNA was extracted and purified as previously described (Raquin et al., 2017). Total RNA was resuspended into 20 μ l of RNase-free water, the quality and the quantity of RNA were checked by Nanodrop and Bioanalyzer (Agilent) and stored at -80°C until further use. Sequencing libraries were prepared from pools of 12 individuals using the TruSeq Stranded mRNA library preparation kit (Illumina) following the manufacturer's instructions. Library quality was checked on a DNA1000 Bioanalyzer chip (Agilent) and quantification made by QuBit DNA HS kit (ThermoFisher). Single-end reads of 65 nucleotides (nt) in length were generated on a HiSeq2500 sequencing platform (Illumina). Reads were cleaned of adapter sequences, and low-quality sequences were removed using Cutadapt version 1.11 (Martin, 2011). Only sequences \geq 25 nt in length were considered for further analysis. STAR version 2.5.0a (Dobin et al., 2013), with default parameters, was used for alignment to the *Ae. aegypti* reference genome (AaegL5.2, <https://vectorbase.org>). Genes were counted using featureCounts version 1.4.6-p3 (Liao, Smyth, & Shi, 2014) in the Subreads package (parameters: -t exon, -g gene_id and -s 1). The number of uniquely mapped reads ranged from 11.3 to 65.6 million per sample. The raw sequences were deposited into the NCBI Gene Expression Omnibus repository under accession number GSE173472.

Differential gene expression

All analyses of transcript abundance were performed using R version 3.6.1 (R Core Team, 2014) and the Bioconductor package DESeq2 version 1.24.0 (Love, Huber, & Anders, 2014). Normalization and dispersion estimation were performed with DESeq2 using the default parameters and statistical tests for differential expression were performed applying the independent filtering algorithm. Differential expression between treatments for larval, pupal and adult stages was tested with a generalized linear model. For each pairwise comparison, raw p values were adjusted for multiple testing according to the Benjamini and Hochberg procedure (Benjamini & Hochberg, 1995). Genes with both an absolute \log_2 -transformed fold-change (\log_2FC) >1 and an adjusted p value <0.05 were considered significantly differentially expressed. Both up- and down-regulated transcripts (relative to the non-axenic controls) were imported into the gene ontology (GO) enrichment analysis tool based on protein analysis through the evolutionary relationships classification system. The molecular functions, cellular component, and biological process GO categories were considered significantly enriched and represented in the pie charts when their adjusted p values were <0.05 . Up-regulated transcripts were also imported into the pathway enrichment analysis tool of the Kyoto Encyclopedia of Genes and Genomes (KEGG) pathway database.

Lipid content

Lipid content was evaluated in 3-day-old adult *Ae. aegypti* females following a published method (Kim, Huang, McMullen, Newell, & Douglas, 2018). Females (N=8-10) were individually homogenized in 125 μ l of TET buffer (10 mM Tris pH 8, 1 mM EDTA, 0.1% Triton X-100) and ~20 1-mm glass beads (BioSpec) in a Precellys 24 grinder (Bertin Technologies) for 30 sec at 6,000 rpm. The samples were centrifuged for 3 min at 14,000 rpm and 50 μ l of the supernatant was incubated at 72°C for 30 min. The triacylglyceride content was assessed enzymatically using the Free Glycerol Reagent (F6428 kit, Sigma) and quantified using a glycerol standard (G7793, Sigma), following manufacturer's instructions, and normalized to mosquito fresh weight.

Starvation resistance

Starvation resistance was evaluated in 3- to 5-day-old adult females following a published method (Judd et al., 2018). Triplicate groups of 10 females from each condition (gnotobiotic and non-axenic treatments) were maintained in pint-cardboard cups. The sucrose solution was removed, and the number of dead mosquitoes was monitored at 4- to 8-hour intervals for 100 hours.

Statistics

Statistical analyses were performed with JMP version 14.0 (www.jmpdiscovery.com) and GraphPad Prism version 9.0 (www.graphpad.com). To analyze pupation rate, the 50% pupation day (PD_{50}) was estimated using the Kaplan-Meier estimator for each replicate flask of each experiment. PD_{50} values were compared between

treatments by analysis of variance (ANOVA) weighted by the sample size. To account for uncontrolled variation between experiments, wing lengths were normalized to the non-axenic controls of the same experiment and compared between treatments by ANOVA. Survival curves were analyzed as a function of the treatment, the experiment (if >1) and their interaction using a Cox model and a Wald test. The interaction was removed from the final model when non-significant. Bacterial loads and individual gene expression levels were compared with Mann–Whitney *U* test. DENV infection and dissemination rates were analyzed by logistic regression as a function of the treatment, the experiment and their interaction, followed by likelihood-ratio χ^2 tests. Dissemination titer was \log_{10} -transformed and analyzed by ANOVA as a function of the treatment, the experiment and their interaction.

Results

Larval exposure to different bacteria influences life-history traits

We previously isolated a panel of bacteria from the water of natural *Ae. aegypti* breeding sites in both domestic (D) and sylvatic (S) habitats in Gabon (Dickson et al., 2017). Comparing domestic and sylvatic isolates was not a primary goal of the present study and we denote isolates with D or S thereafter mainly for identification purposes. We first screened 16 of these bacterial isolates (representing the taxonomic diversity of bacterial genera across sites and habitats) for their ability to influence mosquito life-history traits through exposure during larval development. We compared the developmental time, adult female body size and adult female survival of mosquitoes after mono-association of gnotobiotic larvae with each one of the 16 bacterial isolates. We generated gnotobiotic larvae by exposing axenic larvae to a standardized concentration of a single bacterial isolate in the absence of other bacteria, and used non-axenic larvae (i.e., from non-sterilized eggs) as controls. Developmental time was evaluated by monitoring the proportion of pupating individuals over time. On average, 95.7% of larvae survived and successfully pupated across gnotobiotic treatments, experiments and replicates (range 70-100%; median 100%). The median developmental time (50% pupation day; PD_{50}) varied significantly ($p < 0.0001$) between gnotobiotic treatments (Fig. 1A), ranging from 8.03 days (*Lysobacter* D) to 11.62 days (*Rahnella* S). The PD_{50} was 8.69 days for non-axenic controls. The body size of adult females also varied significantly ($p < 0.0001$) between gnotobiotic treatments (Fig. 1B). The mean female wing length (normalized to account for experimental variation) ranged from -0.041 mm (*Leifsonia* S) to $+0.254$ mm (*Rahnella* S) relative to the non-axenic controls. Adult female survival was monitored in 1-3 replicate experiments for each of the 16 isolates with the non-axenic controls used as a reference. Accounting for differences between experiments (when >1), the gnotobiotic treatment influenced adult female survival relative to the non-axenic controls for seven of the 16 bacterial isolates (Fig. 1C; Table S1). Together, these experiments showed that exposure to different bacteria during larval development resulted in variation in

several life-history traits, including adult female survival, a critical determinant of vectorial capacity (Shaw & Catteruccia, 2019). We selected the three isolates with the strongest effect on adult female survival (*Flavobacterium* S, *Lysobacter* D and *Paenibacillus* D) and included a fourth isolate (*Enterobacteriaceae* S) as a reference from our earlier work (Dickson et al., 2017), for further study.

Larval exposure to different bacteria influences DENV vector competence

We first examined whether the bacterial load differed between the four gnotobiotic treatments. We estimated the relative amount of bacterial DNA by quantifying the universal 16S bacterial ribosomal RNA gene normalized to the mosquito housekeeping gene *RP49*. We found that the bacterial load was similar in larvae across gnotobiotic treatments although it was significantly lower than in the non-axenic controls (Fig. 2A). The bacterial load did not significantly vary in pupae (Fig. 2B) or in adults shortly after emergence under sterile conditions (Fig. 2C). We also monitored the concentration of live cultivable bacteria in the larval rearing water and found that it was similar between gnotobiotic treatments at early time points (before day 4) and significantly lower at late time points (after day 4) for *Lysobacter* D, *Paenibacillus* D, and *Enterobacteriaceae* S isolates (Fig. S1). To determine if the bacterial isolates present at the larval stage persisted at the adult stage after transfer to a non-sterile environment, we sequenced bacterial colonies (N=6-10) obtained from individual females 2-3 days after their emergence. As previously observed (Dickson et al., 2017), none of the bacterial isolates present during gnotobiotic rearing was recovered at the adult stage (Fig. S2).

After gnotobiotic rearing followed by 5-7 days spent under conventional insectary conditions, we offered adult *Ae. aegypti* females a DENV infectious blood meal. We found that infection prevalence was significantly lower in females originating from larvae mono-associated with *Flavobacterium* S than in females originating from larvae mono-associated with *Paenibacillus* D and in non-axenic control females (Fig. 2D). The proportion of DENV-infected females that developed a disseminated infection did not differ between treatments (Fig. 2E), however the titer of disseminated virus, a proxy for transmission potential (Lambrechts et al., 2012), was significantly lower (about 5-fold) in mosquitoes whose larvae were exposed to *Flavobacterium* S and *Paenibacillus* D (Fig. 2F). Thus, these experiments showed that despite harboring a similar bacterial load, mosquitoes exposed to different bacteria during larval development had a different ability to transmit DENV at the adult stage.

Larval exposure to different bacteria results in substantial transcriptional changes

We next investigated whether exposure to different bacteria at the larval stage was accompanied by differences in transcriptional profiles throughout development. We sequenced the whole-body transcriptomes of triplicate pools (N=12 per pool) of L₄ larvae, pupae and newly emerged adults from gnotobiotic and non-axenic treatments. Because the sex of immature stages cannot be readily determined, we combined 6 males

and 6 females at the adult stage for consistency across life stages. We also included pools of 12 L₁ axenic larvae as a reference but our primary aim was to compare gnotobiotic treatments between them rather than with the axenic or non-axenic controls. Across samples and life stages, we detected a total of 19,763 *Ae. aegypti* transcripts. Principal component analysis (PCA) of read counts identified three main clusters representing the three life stages (Fig. S3). Of note, the larval cluster included a few pools of pupae, the pupal cluster contained a few pools of larvae and adults, and the adult cluster included a few pools of pupae. However, pools of larvae and pools of adults did not overlap. This observation indicates that life stages tend to blend into each other at the transcriptional level during transitioning periods. When life stages were analyzed separately by PCA, replicates from the same treatments did not necessarily cluster together, with the exception of L₁ axenic larvae and pupae from the *Paenibacillus* D treatment (Fig. 3A). Pairwise comparisons found a total of 2,359, 10,796 and 6,026 transcripts that were significantly differentially expressed between at least two gnotobiotic treatments in larvae, pupae and newly emerged adults, respectively. As mentioned above, our primary goal was to compare gnotobiotic treatments with one another and we used the non-axenic controls as a shared reference level to facilitate pairwise comparisons. A total of 4,029, 7,240 and 2,844 transcripts were significantly enriched or depleted relative to the non-axenic controls in gnotobiotic larvae, pupae and newly emerged adults, respectively. Only a small minority of differentially expressed genes was shared among the four gnotobiotic treatments, for each life stage (Fig. 3C). Functional clustering revealed that the most represented gene ontology (GO) category in differentially expressed genes was that of metabolic processes, irrespective of the life stage (Fig. 3D). Pathway enrichment analysis of differentially expressed transcripts confirmed that metabolic pathway was the most represented Kyoto Encyclopedia of Genes and Genomes (KEGG) category in all of the comparisons (Fig. S4). Together, the transcriptomic analyses showed that exposure to different bacteria at the larval stage resulted in massive transcriptional changes, most of which were related to metabolic processes.

Carry-over effects occur at the level of transcriptional regulation

We next asked whether we could detect transcripts whose differential expression was correlated between life stages. For each gnotobiotic treatment, we defined 'carry-over transcripts' as transcripts that were (i) differentially regulated in larvae, (ii) differentially regulated in adults, and (iii) differentially regulated in the same direction and with a similar magnitude in both larvae and adults (i.e., a lack of statistical interaction). We identified 1, 180 and 128 such 'carry-over transcripts' in the *Lysobacter* D, *Flavobacterium* S and *Paenibacillus* D treatments, respectively (Table S4; Fig. 4A; Fig. S5). Functional clustering revealed that the most represented GO category in 'carry-over transcripts' of the *Flavobacterium* S and *Paenibacillus* D treatments was that of metabolic processes (Fig. 4B). This analysis showed that carry-over effects observed at the phenotypic level can also be detected at the level of gene expression.

Larval exposure to bacteria has physiological consequences at the adult stage

To investigate the functional consequences of transcriptional changes associated with gnotobiotic rearing, we examined the metabolic pathways that were differentially regulated at each life stage. We found that almost all the transcripts involved in metabolic pathways that were enriched in larvae were related to lipid metabolism (Fig. 5A; Fig. S6). It was also the case in adults for the two bacterial isolates for which we detected a large number of 'carry-over transcripts' (*Flavobacterium S* and *Paenibacillus D*). In larvae exposed to one of these two isolates, we found that most enzymes in the glycerophospholipid metabolism pathways were differentially expressed, the majority being up regulated (Fig. 5B). To determine whether such transcriptional changes could have functional consequences at the adult stage, we measured the gene expression level of seven triglyceride enzymes in individual adult *Ae. aegypti* females. We found that five and four of these enzymes were indeed enriched in the *Flavobacterium S* and *Paenibacillus D* treatments, respectively, relative to the non-axenic controls (Fig. 6A). Moreover, we measured elevated levels of triacylglycerol in adult females from the *Flavobacterium S* and *Paenibacillus D* treatments (Fig. 6B), which translated into higher starvation resistance in these two treatments (Fig. 6C). Thus, these experiments showed that the transcriptional changes detected between mosquitoes exposed to different bacteria at the larval stage were reflected at the functional level in adults.

Discussion

This study builds on our previous work (Dickson et al., 2017) to show that carry-over effects detected at the phenotypic level are associated with massive changes at the molecular level in gnotobiotic *Ae. aegypti* mosquitoes. Specifically, we found that larval exposure to different bacteria results in transcriptomic and metabolic changes that have consequences on adult physiology and fitness. For two of the four gnotobiotic treatments that we examined in more detail (larval exposure to *Flavobacterium S* and *Paenibacillus D*), we noticed that several transcripts related to lipid metabolism were enriched in both larvae and adults. We found elevated lipid content in the adult females emerging from these gnotobiotic treatments, which translated into higher starvation resistance. Together, our results provide evidence that carry-over effects in gnotobiotic *Ae. aegypti* are associated with trans-stadial metabolic remodeling. This is an important leap forward to understanding the mechanisms driving the effects of mosquito-bacteria interactions at the larval stage on adult fitness.

We first confirmed and expanded the results of our previous study (Dickson et al., 2017) by detecting significant carry-over effects in adult *Ae. aegypti* females after gnotobiotic rearing. We found that exposure to different bacteria at the larval stage influences several traits underlying vectorial capacity, including

developmental time, adult survival, body size and vector competence for DENV. These carry-over effects are indirect because the single bacteria present during larval development is no longer detected from the emerging adults subsequently maintained in a non-sterile environment (Fig. S2). We previously detected similar carry-over effects for developmental time, adult body size and DENV vector competence but not adult survival (Dickson et al., 2017). This discrepancy could reflect the more rigorous control of inoculum size that we implemented in the present study by adjusting the bacterial concentration to 5×10^5 CFU/ml instead of simply using a colony of similar size. It could also be due to the larger number of bacterial isolates that were tested (16 vs. three in the previous study) since only seven out of 16 bacterial isolates resulted in a consistent effect on adult survival. The influence of larval exposure to bacteria on adult female survival is epidemiologically meaningful because it is one of the most critical determinants of vectorial capacity (Shaw & Catteruccia, 2019).

We used an untargeted approach of transcriptome sequencing to examine the gene expression profiles of gnotobiotic larvae, pupae and freshly emerged adults. We detected substantial variation in transcript abundance between the gnotobiotic treatments both in pairwise comparisons and using non-axenic controls as the reference level. In addition to the expected differences between life stages, we found that most of the transcriptional changes were related to metabolic processes. This is consistent with other studies suggesting that bacteria play a nutritional role during larval development in mosquitoes (Correa et al., 2018; Romoli et al., 2021) and fruit flies (Consuegra, Grenier, Akherraz, et al., 2020; Consuegra, Grenier, Baa-Puyoulet, et al., 2020). This is also in line with the results from a transcriptional comparison of axenic and gnotobiotic *Ae. aegypti* larvae (Vogel et al., 2017), which found that the lack of mosquito-bacteria interactions at the larval stage results in defects in acquisition and assimilation of nutrients. Finally, a recent study found that axenic and conventionally reared *Ae. aegypti* only displayed minimal differences in gene expression at the adult stage (Hyde, Correa, Hughes, Steven, & Brackney, 2020). However, a main methodological difference (a significantly more conservative differential expression analysis) prevents a direct comparison with our results.

A key result of the present study was to identify 'carry-over transcripts', that is, transcripts that are differentially regulated in the same direction and with the same magnitude in both larvae and adults. The effect of the larval environment on mosquito adult traits is well established (Dittmer & Gabrieli, 2020; Joy et al., 2010; Price et al., 2015; Sasmita et al., 2019; Telang et al., 2012), but to our knowledge, this is the first report of transcriptional regulation carrying over from larvae to adults. Larval exposure to an *Enterobacter* isolate was shown to modulate immune gene expression in *Ae. aegypti* adults (Carlson et al., 2020), but this did not necessarily imply correlated changes in larval gene expression. Indeed, larval condition can influence the expression of adult immune genes in the absence of changes in larval immunity (Fellous & Lazzaro, 2010). We only detected 'carry-over transcripts' in two of the four gnotobiotic treatments we focused on (larval exposure to *Flavobacterium* S and *Paenibacillus* D), indicating that carry-over effects observed at the phenotypic level do

not necessarily reflect correlated transcript regulation. The molecular mechanisms allowing the trans-stadial persistence of differential gene expression also remain to be elucidated.

Importantly, our study points to a functional link between mosquito-bacteria interactions during larval development, metabolic pathways and the fitness of adults. We found that larval exposure to *Flavobacterium* S and *Paenibacillus* D was associated with remodeling of lipid metabolism, higher levels of lipid storage, higher starvation resistance, and lower DENV titers in adult female *Ae. aegypti*. Flaviviruses are intimately dependent on host lipids and typically reconfigure lipid metabolism in the host cell to create a favorable environment for viral multiplication (Martin-Acebes, Vazquez-Calvo, & Saiz, 2016). The link between lipid metabolism and DENV infection in *Ae. aegypti* was highlighted in several recent studies (Raquin et al., 2017; Vial et al., 2020; Vial et al., 2019) and supports the hypothesis that the observed carry-over effects on DENV vector competence also derive from remodeling of lipid metabolism. However, we caution that our study does not conclusively identify a molecular mechanism responsible for the observed carry-over effects. Differences in the bacterial microbiome of adults emerging after gnotobiotic development (Fig. S2) and/or other physiological differences than alterations in lipid metabolism (Table S4) could also contribute to the phenotypic differences between gnotobiotic treatments.

Although gnotobiotic rearing of *Ae. aegypti* larvae with a single bacterial isolate is an oversimplification of the biotic environment of wild mosquito larvae, this study provides the proof of principle that the diversity of bacterial communities found in larval breeding sites shapes the physiology and fitness of adult mosquitoes. This means that some larval habitats may produce adult mosquitoes with a higher vectorial capacity than others owing to their bacterial composition. However, it is unknown to which extent gnotobiotic conditions based on mono-associations are representative of larval exposure to more complex bacterial communities in natural habitats. Additional work is necessary to assess the implications of carry-over effects in a more realistic biotic environment. Bacterial taxa found in natural *Ae. aegypti* breeding sites are highly diverse and the majority are not shared across microhabitats (Coon et al., 2016; Dada et al., 2014; Dickson et al., 2017; Hery et al., 2021). We expect that variable biotic conditions experienced by immature stages likely contribute to create substantial phenotypic variation in adult traits. Because some of these adult traits determine fitness, this phenotypic variation is predicted to translate into significant fitness differences. In turn, these fitness differences are expected to drive the adaptive evolution of female preference for breeding sites that produce the fittest individuals. Surprisingly, few bacterial taxa have been consistently associated with the presence of *Ae. aegypti* larvae in natural breeding sites (Dada et al., 2014; Nilsson, Sharma, Bhatnagar, Bertilsson, & Terenius, 2018), probably reflecting the functional redundancy between bacterial communities. Thus, advancing our understanding of the molecular and physiological changes that are associated with exposure to different

bacterial communities and other microorganisms will improve our understanding of how mosquito-microbiota interactions at the larval stage contribute to shape mosquito fitness.

Acknowledgments

We thank Catherine Lallemand for the maintenance of mosquito colonies and the Lambrechts lab members for their insights. We are grateful to Alongkot Ponlawat for the initial collection of *Ae. aegypti* in Thailand. We thank Christophe Paupy, Davy Jiolle, Diego Ayala, Amine Ghoulane, Marc Monot, Karima Zouache, Edwige Martin, Vincent Raquin and Guillaume Minard for their input and assistance at earlier stages of the study. This work was primarily funded by the Agence Nationale de la Recherche (grant ANR-16-CE35-0004-01). It was also supported by the French Government's Investissement d'Avenir program Laboratoire d'Excellence Integrative Biology of Emerging Infectious Diseases (grant ANR-10-LABX-62-IBEID to LL), and the City of Paris Emergence(s) program in Biomedical Research (to LL). The Biomix platform was supported by France Génomique (ANR-10-INBS-09-09) and IBISA. The funders had no role in study design, data collection and interpretation, or the decision to submit the work for publication.

References

- Alto, B. W., & Lounibos, L. P. (2013). Vector competence for arboviruses in relation to the larval environment of mosquitoes. In W. Takken & C. J. M. Koenraadt (Eds.), *Ecology of parasite-vector interactions* (Vol. 1, pp. 81-101): Wageningen Academic Publishers.
- Alto, B. W., Lounibos, L. P., Higgs, S., & Juliano, S. A. (2005). Larval Competition Differentially Affects Arbovirus Infection in *Aedes* Mosquitoes. *Ecology*, *86*(12), 3279-3288.
- Alto, B. W., Lounibos, L. P., Mores, C. N., & Reiskind, M. H. (2008). Larval competition alters susceptibility of adult *Aedes* mosquitoes to dengue infection. *Proceedings of the Royal Society B: Biological Sciences*, *275*(1633), 463-471. doi:10.1098/rspb.2007.1497
- Aubry, F., Dabo, S., Manet, C., Filipovic, I., Rose, N. H., Miot, E. F., . . . Lambrechts, L. (2020). Enhanced Zika virus susceptibility of globally invasive *Aedes aegypti* populations. *Science*, *370*(6519), 991-996. doi:10.1126/science.abd3663
- Benjamini, Y., & Hochberg, Y. (1995). Controlling the false discovery rate: a practical and powerful approach to multiple testing. *Journal of the Royal Statistical Society B*, *57*(1), 289-300.

- Brady, O. J., & Hay, S. I. (2020). The Global Expansion of Dengue: How *Aedes aegypti* Mosquitoes Enabled the First Pandemic Arbovirus. *Annual Review of Entomology* (65), 191-208. doi:10.1146/annurev-ento-011019-024918
- Buckner, E. A., Alto, B. W., & Lounibos, L. P. (2016). Larval Temperature-Food Effects on Adult Mosquito Infection and Vertical Transmission of Dengue-1 Virus. *Journal of Medical Entomology*, 53(1), 91-98. doi:10.1093/jme/tjv145
- Carlson, J. S., Short, S. M., Anglero-Rodriguez, Y. I., & Dimopoulos, G. (2020). Larval exposure to bacteria modulates arbovirus infection and immune gene expression in adult *Aedes aegypti*. *Developmental and Comparative Immunology*, 104, 103540. doi:10.1016/j.dci.2019.103540
- Consuegra, J., Grenier, T., Akherraz, H., Rahioui, I., Gervais, H., da Silva, P., & Leulier, F. (2020). Metabolic Cooperation among Commensal Bacteria Supports *Drosophila* Juvenile Growth under Nutritional Stress. *iScience*, 23(6), 101232. doi:10.1016/j.isci.2020.101232
- Consuegra, J., Grenier, T., Baa-Puyoulet, P., Rahioui, I., Akherraz, H., Gervais, H., . . . Leulier, F. (2020). *Drosophila*-associated bacteria differentially shape the nutritional requirements of their host during juvenile growth. *PLoS Biology*, 18(3), e3000681. doi:10.1371/journal.pbio.3000681
- Coon, K. L., Brown, M. R., & Strand, M. R. (2016). Mosquitoes host communities of bacteria that are essential for development but vary greatly between local habitats. *Molecular Ecology*, 25(22), 5806-5826. doi:10.1111/mec.13877
- Coon, K. L., Valzania, L., McKinney, D. A., Vogel, K. J., Brown, M. R., & Strand, M. R. (2017). Bacteria-mediated hypoxia functions as a signal for mosquito development. *Proceedings of the National Academy of Sciences of the United States of America*, 114(27), E5362-E5369. doi:10.1073/pnas.1702983114
- Coon, K. L., Vogel, K. J., Brown, M. R., & Strand, M. R. (2014). Mosquitoes rely on their gut microbiota for development. *Molecular Ecology*, 23(11), 2727-2739. doi:10.1111/mec.12771
- Correa, M. A., Matusovsky, B., Brackney, D. E., & Steven, B. (2018). Generation of axenic *Aedes aegypti* demonstrate live bacteria are not required for mosquito development. *Nature Communications*, 9(1), 4464. doi:10.1038/s41467-018-07014-2
- Crean, A. J., Monro, K., & Marshall, D. J. (2011). Fitness consequences of larval traits persist across the metamorphic boundary. *Evolution*, 65(11), 3079-3089. doi:10.1111/j.1558-5646.2011.01372.x
- Dada, N., Jumas-Bilak, E., Manguin, S., Seidu, R., Stenstrom, T. A., & Overgaard, H. J. (2014). Comparative assessment of the bacterial communities associated with *Aedes aegypti* larvae and water from domestic water storage containers. *Parasites and Vectors*, 7, 391. doi:10.1186/1756-3305-7-391
- De Block, M. S., R. (2005). Fitness effects from egg to reproduction: bridging the life history transition. *Ecology*, 86(1), 185-197. doi:10.1890/04-0116

- de La Llave, E., Lecoeur, H., Besse, A., Milon, G., Prina, E., & Lang, T. (2011). A combined luciferase imaging and reverse transcription polymerase chain reaction assay for the study of *Leishmania* amastigote burden and correlated mouse tissue transcript fluctuations. *Cellular Microbiology*, *13*(1), 81-91. doi:10.1111/j.1462-5822.2010.01521.x
- Dickson, L. B., Ghoulane, A., Volant, S., Bouchier, C., Ma, L., Vega-Rua, A., . . . Lambrechts, L. (2018). Diverse laboratory colonies of *Aedes aegypti* harbor the same adult midgut bacterial microbiome. *Parasites and Vectors*, *11*(1), 207. doi:10.1186/s13071-018-2780-1
- Dickson, L. B., Jiolle, D., Minard, G., Moltini-Conclois, I., Volant, S., Ghoulane, A., . . . Lambrechts, L. (2017). Carryover effects of larval exposure to different environmental bacteria drive adult trait variation in a mosquito vector. *Science Advances*, *3*(8), e1700585. doi:10.1126/sciadv.1700585
- Dittmer, J., & Gabrieli, P. (2020). Transstadial metabolic priming mediated by larval nutrition in female *Aedes albopictus* mosquitoes. *Journal of Insect Physiology*, *123*, 104053. doi:10.1016/j.jinsphys.2020.104053
- Dobin, A., Davis, C. A., Schlesinger, F., Drenkow, J., Zaleski, C., Jha, S., . . . Gingeras, T. R. (2013). STAR: ultrafast universal RNA-seq aligner. *Bioinformatics*, *29*(1), 15-21. doi:10.1093/bioinformatics/bts635
- Ezeakacha, N. F., & Yee, D. A. (2019). The role of temperature in affecting carry-over effects and larval competition in the globally invasive mosquito *Aedes albopictus*. *Parasites and Vectors*, *12*(1), 123. doi:10.1186/s13071-019-3391-1
- Fansiri, T., Fontaine, A., Diancourt, L., Caro, V., Thaisomboonsuk, B., Richardson, J. H., . . . Lambrechts, L. (2013). Genetic Mapping of Specific Interactions between *Aedes aegypti* Mosquitoes and Dengue Viruses. *PLoS Genetics*, *9*(8), e1003621. doi:10.1371/journal.pgen.1003621
- Fellous, S., & Lazzaro, B. P. (2010). Larval food quality affects adult (but not larval) immune gene expression independent of effects on general condition. *Molecular Ecology*, *19*(7), 1462-1468. doi:10.1111/j.1365-294X.2010.04567.x
- Fontaine, A., Jiolle, D., Moltini-Conclois, I., Lequime, S., & Lambrechts, L. (2016). Excretion of dengue virus RNA by *Aedes aegypti* allows non-destructive monitoring of viral dissemination in individual mosquitoes. *Scientific Reports*, *6*, 24885. doi:10.1038/srep24885
- Gentile, C., Lima, J. B., & Peixoto, A. A. (2005). Isolation of a fragment homologous to the rp49 constitutive gene of *Drosophila* in the Neotropical malaria vector *Anopheles aquasalis* (Diptera: Culicidae). *Memorias do Instituto Oswaldo Cruz*, *100*(6), 545-547. doi:10.1590/s0074-02762005000600008
- Giraud, E., Martin, O., Yakob, L., & Rogers, M. (2019). Quantifying *Leishmania* Metacyclic Promastigotes from Individual Sandfly Bites Reveals the Efficiency of Vector Transmission. *Communications Biology*, *2*, 84. doi:10.1038/s42003-019-0323-8
- Guegan, M., Zouache, K., Demichel, C., Minard, G., Tran Van, V., Potier, P., . . . Valiente Moro, C. (2018). The mosquito holobiont: fresh insight into mosquito-microbiota interactions. *Microbiome*, *6*(1), 49. doi:10.1186/s40168-018-0435-2

- Hery, L., Guidez, A., Durand, A. A., Delannay, C., Normandeau-Guimond, J., Reynaud, Y., . . . Vega-Rua, A. (2021). Natural Variation in Physicochemical Profiles and Bacterial Communities Associated with *Aedes aegypti* Breeding Sites and Larvae on Guadeloupe and French Guiana. *Microbial Ecology*, *81*(1), 93-109. doi:10.1007/s00248-020-01544-3
- Hyde, J., Correa, M. A., Hughes, G. L., Steven, B., & Brackney, D. E. (2020). Limited influence of the microbiome on the transcriptional profile of female *Aedes aegypti* mosquitoes. *Scientific Reports*, *10*(1), 10880. doi:10.1038/s41598-020-67811-y
- Johnson, D. W. (2008). Combined effects of condition and density on post-settlement survival and growth of a marine fish. *Oecologia*, *155*(1), 43-52. doi:10.1007/s00442-007-0882-0
- Joy, T. K., Arik, A. J., Corby-Harris, V., Johnson, A. A., & Riehle, M. A. (2010). The impact of larval and adult dietary restriction on lifespan, reproduction and growth in the mosquito *Aedes aegypti*. *Experimental Gerontology*, *45*(9), 685-690. doi:10.1016/j.exger.2010.04.009
- Judd, A. M., Matthews, M. K., Hughes, R., Veloz, M., Sexton, C. E., & Chaston, J. M. (2018). Bacterial Methionine Metabolism Genes Influence *Drosophila melanogaster* Starvation Resistance. *Applied and Environmental Microbiology*, *84*(17). doi:10.1128/AEM.00662-18
- Kim, G., Huang, J. H., McMullen, J. G., 2nd, Newell, P. D., & Douglas, A. E. (2018). Physiological responses of insects to microbial fermentation products: Insights from the interactions between *Drosophila* and acetic acid. *Journal of Insect Physiology*, *106*(Pt 1), 13-19. doi:10.1016/j.jinsphys.2017.05.005
- Koella, J. C., & Lyimo, E. O. (1996). Variability in the relationship between weight and wing length of *Anopheles gambiae* (Diptera: Culicidae). *Journal of Medical Entomology*, *33*(2), 261-264. doi:10.1093/jmedent/33.2.261
- Kraemer, M. U. G., Reiner, R. C., Jr., Brady, O. J., Messina, J. P., Gilbert, M., Pigott, D. M., . . . Golding, N. (2019). Past and future spread of the arbovirus vectors *Aedes aegypti* and *Aedes albopictus*. *Nature Microbiology*, *4*(5), 854-863. doi:10.1038/s41564-019-0376-y
- Lambrechts, L., Fansiri, T., Pongsiri, A., Thaisomboonsuk, B., Klungthong, C., Richardson, J. H., . . . Scott, T. W. (2012). Dengue-1 virus clade replacement in Thailand associated with enhanced mosquito transmission. *Journal of Virology*, *86*(3), 1853-1861. doi:10.1128/JVI.06458-11
- Liao, Y., Smyth, G. K., & Shi, W. (2014). featureCounts: an efficient general purpose program for assigning sequence reads to genomic features. *Bioinformatics*, *30*(7), 923-930. doi:10.1093/bioinformatics/btt656
- Linenberg, I., Christophides, G. K., & Gendrin, M. (2016). Larval diet affects mosquito development and permissiveness to *Plasmodium* infection. *Scientific Reports*, *6*, 38230. doi:10.1038/srep38230
- Love, M. I., Huber, W., & Anders, S. (2014). Moderated estimation of fold change and dispersion for RNA-seq data with DESeq2. *Genome Biology*, *15*(12), 550. doi:10.1186/s13059-014-0550-8
- Marshall, D. J., & Morgan, S. G. (2011). Ecological and evolutionary consequences of linked life-history stages in the sea. *Current Biology*, *21*(18), R718-725. doi:10.1016/j.cub.2011.08.022

- Martin, M. (2011). Cutadapt removes adapter sequences from high-throughput sequencing reads. *EMBnet journal*, 17(1), 10-12. doi:10.14806/ej.17.1.200
- Martin-Acebes, M. A., Vazquez-Calvo, A., & Saiz, J. C. (2016). Lipids and flaviviruses, present and future perspectives for the control of dengue, Zika, and West Nile viruses. *Progress in Lipid Research*, 64, 123-137. doi:10.1016/j.plipres.2016.09.005
- Moltini-Conclois, I., Stalinski, R., Tetreau, G., Despres, L., & Lambrechts, L. (2018). Larval Exposure to the Bacterial Insecticide Bti Enhances Dengue Virus Susceptibility of Adult *Aedes aegypti* Mosquitoes. *Insects*, 9(4). doi:10.3390/insects9040193
- Moran, N. A. (1994). Adaptation and constraint in the complex life-cycles of animals. *Annual Review of Ecology and Systematics*, 25, 573-600. doi:10.1146/annurev.es.25.110194.003041
- Muturi, E. J., Blackshear, M., Jr., & Montgomery, A. (2012). Temperature and density-dependent effects of larval environment on *Aedes aegypti* competence for an alphavirus. *Journal of Vector Ecology*, 37(1), 154-161. doi:10.1111/j.1948-7134.2012.00212.x
- Nilsson, L. K. J., Sharma, A., Bhatnagar, R. K., Bertilsson, S., & Terenius, O. (2018). Presence of *Aedes* and *Anopheles* mosquito larvae is correlated to bacteria found in domestic water-storage containers. *FEMS Microbiology and Ecology*, 94(6). doi:10.1093/femsec/fiy058
- Pfaffl, M. W. (2001). A new mathematical model for relative quantification in real-time RT-PCR. *Nucleic Acids Research*, 29(9), e45. doi:10.1093/nar/29.9.e45
- Price, D. P., Schilkey, F. D., Ulanov, A., & Hansen, I. A. (2015). Small mosquitoes, large implications: crowding and starvation affects gene expression and nutrient accumulation in *Aedes aegypti*. *Parasites and Vectors*, 8, 252. doi:10.1186/s13071-015-0863-9
- R Core Team. (2014). R: A language and environment for statistical computing. Vienna, Austria: R Foundation for Statistical Computing. Retrieved from <http://www.R-project.org/>
- Ranasinghe, H. A. K., & Amarasinghe, L. D. (2020). Naturally Occurring Microbiota Associated with Mosquito Breeding Habitats and Their Effects on Mosquito Larvae. *Biomed Research International*, 2020, 4065315. doi:10.1155/2020/4065315
- Raquin, V., Merklings, S. H., Gausson, V., Moltini-Conclois, I., Frangeul, L., Varet, H., . . . Lambrechts, L. (2017). Individual co-variation between viral RNA load and gene expression reveals novel host factors during early dengue virus infection of the *Aedes aegypti* midgut. *PLoS Neglected Tropical Diseases*, 11(12), e0006152. doi:10.1371/journal.pntd.0006152
- Romoli, O., Schonbeck, J. C., Hapfelmeier, S., & Gendrin, M. (2021). Production of germ-free mosquitoes via transient colonisation allows stage-specific investigation of host-microbiota interactions. *Nature Communications*, 12(1), 942. doi:10.1038/s41467-021-21195-3
- Sasmita, H. I., Tu, W. C., Bong, L. J., & Neoh, K. B. (2019). Effects of larval diets and temperature regimes on life history traits, energy reserves and temperature tolerance of male *Aedes aegypti* (Diptera:

- Culicidae): optimizing rearing techniques for the sterile insect programmes. *Parasites and Vectors*, 12(1), 578. doi:10.1186/s13071-019-3830-z
- Schindelin, J., Arganda-Carreras, I., Frise, E., Kaynig, V., Longair, M., Pietzsch, T., . . . Cardona, A. (2012). Fiji: an open-source platform for biological-image analysis. *Nature Methods*, 9(7), 676-682. doi:10.1038/nmeth.2019
- Shaw, W. R., & Catteruccia, F. (2019). Vector biology meets disease control: using basic research to fight vector-borne diseases. *Nature Microbiology*, 4(1), 20-34. doi:10.1038/s41564-018-0214-7
- Telang, A., Qayum, A. A., Parker, A., Sacchetta, B. R., & Byrnes, G. R. (2012). Larval nutritional stress affects vector immune traits in adult yellow fever mosquito *Aedes aegypti* (*Stegomyia aegypti*). *Medical and Veterinary Entomology*, 26(3), 271-281. doi:10.1111/j.1365-2915.2011.00993.x
- Valzania, L., Coon, K. L., Vogel, K. J., Brown, M. R., & Strand, M. R. (2018). Hypoxia-induced transcription factor signaling is essential for larval growth of the mosquito *Aedes aegypti*. *Proceedings of the National Academy of Sciences of the United States of America*, 115(3), 457-465. doi:10.1073/pnas.1719063115
- Vial, T., Tan, W. L., Deharo, E., Misse, D., Marti, G., & Pompon, J. (2020). Mosquito metabolomics reveal that dengue virus replication requires phospholipid reconfiguration via the remodeling cycle. *Proceedings of the National Academy of Sciences of the United States of America*, 117(44), 27627-27636. doi:10.1073/pnas.2015095117
- Vial, T., Tan, W. L., Wong Wei Xiang, B., Misse, D., Deharo, E., Marti, G., & Pompon, J. (2019). Dengue virus reduces AGPAT1 expression to alter phospholipids and enhance infection in *Aedes aegypti*. *PLoS Pathogens*, 15(12), e1008199. doi:10.1371/journal.ppat.1008199
- Vogel, K. J., Valzania, L., Coon, K. L., Brown, M. R., & Strand, M. R. (2017). Transcriptome Sequencing Reveals Large-Scale Changes in Axenic *Aedes aegypti* Larvae. *PLoS Neglected Tropical Diseases*, 11(1), e0005273. doi:10.1371/journal.pntd.0005273
- Vonesh, J. R. (2005). Sequential predator effects across three life stages of the African tree frog, *Hyperolius spinigularis*. *Oecologia*, 143(2), 280-290. doi:10.1007/s00442-004-1806-x
- Wang, Y., Eum, J. H., Harrison, R. E., Valzania, L., Yang, X., Johnson, J. A., . . . Strand, M. R. (2021). Riboflavin instability is a key factor underlying the requirement of a gut microbiota for mosquito development. *Proceedings of the National Academy of Sciences of the United States of America*, 118(15). doi:10.1073/pnas.2101080118
- Westbrook, C. J., Reiskind, M. H., Pesko, K. N., Greene, K. E., & Lounibos, L. P. (2010). Larval environmental temperature and the susceptibility of *Aedes albopictus* Skuse (Diptera: Culicidae) to Chikungunya virus. *Vector Borne and Zoonotic Diseases*, 10(3), 241-247. doi:10.1089/vbz.2009.0035

Data Accessibility

Sequencing data: GEO accession number GSE173472.

Raw phenotypic data: <https://doi.org/10.5061/dryad.15dv41nzs>.

Author Contributions

EG, LBD, CVM and LL conceived of the study. LBD collected and isolated the bacteria. EG, FA and SD carried out the mosquito experiments. OS prepared and sequenced the libraries. RL processed the sequencing reads. HV performed the differential gene expression analysis. EG and LL analyzed the experimental data and wrote the manuscript. All authors approved the final version of the manuscript.

Figure Legends

Figure 1. Larval exposure to different bacterial isolates results in variation in several life-history traits.

The figure shows *Ae. aegypti* variation in developmental time (A), female wing length (B) and female adult survival (C) following larval exposure to one of 16 bacterial isolates. A. The forest plot shows the 50% pupation day (PD₅₀) estimate (number of days elapsed until 50% of larvae have become pupae) for each of the 16 bacterial isolates, weighted by the sample size (number of pupating individuals per replicate). Separate PD₅₀ estimates were obtained for each replicate flask with a Kaplan-Meier analysis of all pupating individuals. The PD₅₀ estimates were compared between treatments by weighted ANOVA. B. The forest plot shows the normalized wing length of adult females for each of the 16 bacterial isolates. The wing length was normalized relative to the average wing length of the non-axenic controls from the same experiment. The normalized wing length was compared between treatments by one-way ANOVA. The experiment effect was removed from the model because it was non-significant ($p=0.1022$). In panels A-B, data represent the mean \pm SEM from three independent experiments in triplicate. Bacterial isolates are ordered according to their PD₅₀ estimate. The vertical dotted line represents the mean value of the non-axenic controls. Statistical significance of the pairwise differences was determined by Tukey's post-hoc test and is indicated by letters next to the graphs. Treatments not connected by the same letter are significantly different. C. Kaplan-Meier plots showing adult female survival over time in four separate experiments for each of the 16 bacterial isolates. The dotted lines represent the non-axenic controls and the solid lines represent the gnotobiotic treatment. Asterisks indicate the statistical significance of the main treatment effect ($*p<0.05$, $**p<0.01$). The full statistical analyses of survival curves are provided in Table S1. In all panels the bacterial isolate is identified by the genus name followed by the letter D or S to denote isolation from a domestic or sylvatic larval habitat, respectively.

Figure 2. Larval exposure to four selected bacterial isolates results in variation in DENV vector competence.

The figure shows relative bacterial loads in individual L₄ larvae (A), pupae (B) and freshly emerged adults (C) and dengue virus (DENV) infection rate (D), dissemination rate (E) and dissemination titer (F) after larval exposure to *Enterobacteriaceae* S, *Flavobacterium* S, *Lysobacter* D or *Paenibacillus* D isolates. In panels A-C, the relative bacterial load was measured by quantitative PCR using primers targeting a conserved sequence in the 16S bacterial rRNA gene and normalized to the mosquito housekeeping gene *RP49*. The horizontal bar indicates the mean, and the error bar represents the SEM. Asterisks indicate statistically significant differences between non-axenic and gnotobiotic treatments ($*p<0.05$, $**p<0.01$) by Mann-Whitney *U* test. In panels D-E, error bars represent the 95% confidence intervals of the proportions. The infection rate is the proportion of blood-fed females with a DENV-positive body 14 days post infectious blood

meal. The dissemination rate is the proportion of infected females with a DENV-positive head 14 days post infectious blood meal. In panel **F**, the dissemination titer is the concentration of infectious DENV particles expressed as the \log_{10} -transformed number of focus-forming units (FFU) detected in the head 14 days post infectious blood meal. The horizontal bar indicates the mean, and the error bar represents the SEM. Panels **D-F** represent data from two separate experiments that were analyzed by nominal logistic regression (**D-E**) or by ANOVA (**F**) as a function of experiment, treatment and their interaction. In panel **D**, the treatment effect was statistically significant ($p=0.0399$) whereas the experiment effect ($p=0.0597$) and the interaction effect ($p=0.9559$) were not. In panel **E**, there was no statistically significant effect of the treatment ($p=0.8984$), the experiment ($p=0.0849$) or the interaction ($p=0.9772$). In panel **F**, the treatment effect ($p<0.0001$) and the experiment effect ($p=0.0203$) were statistically significant whereas the interaction effect ($p=0.1798$) was not. In panels **D-F**, the statistical significance of pairwise differences between treatments are indicated by letters above the graphs (based on the 95% confidence intervals in panels **D-E** and on Tukey's post-hoc test in panel **F**). Treatments not connected by the same letter are significantly different.

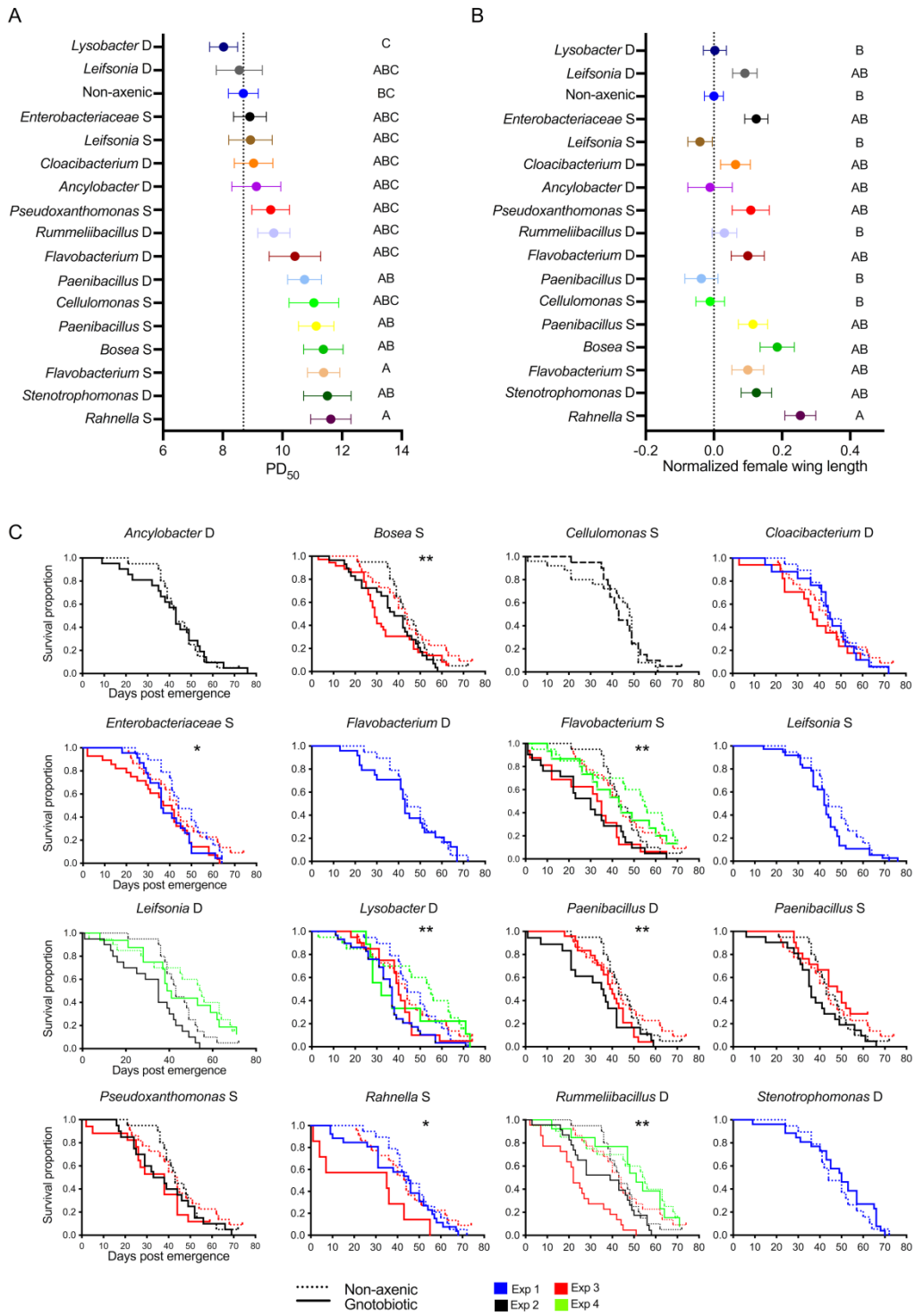
Figure 3. Larval gnotobiotic treatments trigger profound transcriptomic changes throughout mosquito development. The figure summarizes the transcriptional profiles of L₄ larvae, pupae and newly emerged adults (triplicate pools of 12 individuals for each life stage, with 6 males + 6 females at the adult stage) after larval exposure to four selected bacterial isolates, or non-axenic control treatment. Triplicate pools of axenic L₁ larvae are also included. **A.** Principal component analysis (PCA) of read counts for the three life stages. The PCA is based on the variance-stabilized transformed count matrix and only the first two components are shown. The percentage of variability explained by each component is displayed in brackets. The data points are identified by the combination of the isolate (ent=*Enterobacteriaceae* S; fla=*Flavobacterium* S; lys=*Lysobacter* D; pa=*Paenibacillus* D; ax=axenic; na=non-axenic) followed by the life stage (lar=larvae; pup=pupae and ad=adults) and the replicate number. Combined PCA of all life stages together is provided in Fig. S3. **B.** Venn diagrams showing the overlap in the number of differentially expressed transcripts (relative to the non-axenic controls) between the four gnotobiotic treatments in larvae, pupae and newly emerged adults. **C.** Functional clustering of transcripts differentially expressed relative to non-axenic controls, for each combination of life stage (in columns) and gnotobiotic treatment (in rows). Pie charts show the proportion of gene ontology (GO) categories for enriched and depleted transcripts. GO categories with <1% of differentially expressed transcripts in all comparisons are grouped together in the category designated as 'others'. N indicates the total number of transcripts assigned to functional categories.

Figure 4. Carry-over effects occur at the level of gene expression for two bacterial isolates. **A.** For each gnotobiotic treatment, the Venn diagrams show the overlap of transcripts that are enriched or depleted in larvae (green), in adults (red), and that are not associated with a statistical interaction between the two stages (blue). The interaction analysis is provided in Fig. S5. The triple intersection of the Venn diagrams represents the 'carry-over transcripts' that were differentially expressed (relative to the non-axenic controls) in the same direction and with a similar magnitude in both larvae and adults from the same gnotobiotic treatment. **B.** The pie charts show the GO categories of 'carry-over transcripts' in the *Flavobacterium* S and *Paenibacillus* D gnotobiotic treatments. N indicates the total number of transcripts assigned to functional categories.

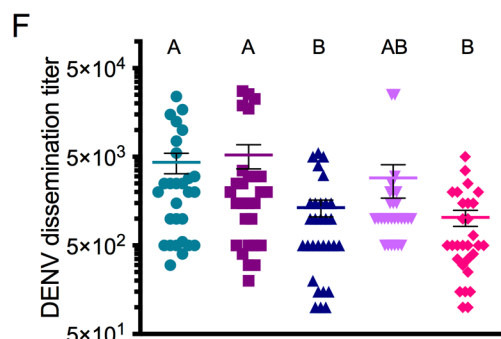
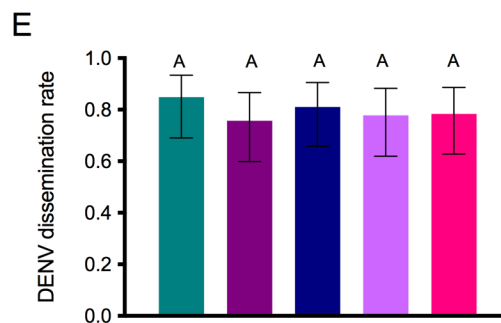
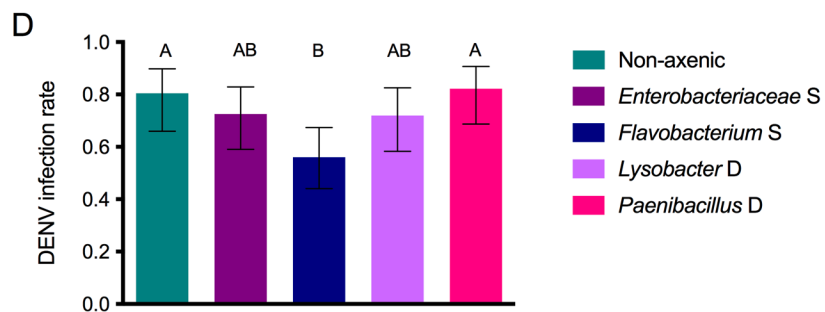
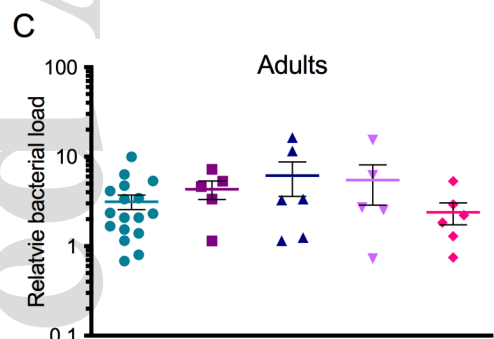
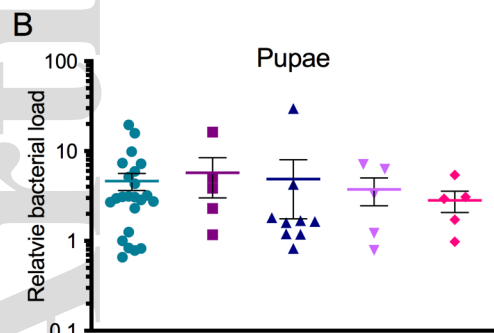
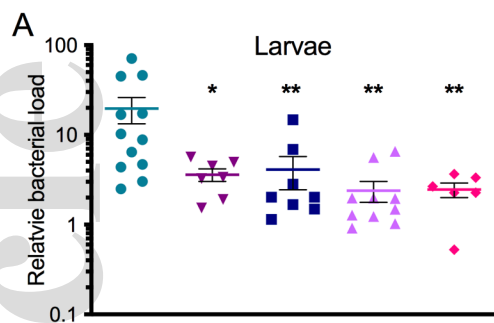
Figure 5. Gene expression changes in gnotobiotic larvae reflect remodeling of lipid metabolism. **A.** The pie charts show the proportion of transcripts involved in the metabolism of different substrates that were enriched or depleted (relative to the non-axenic controls) in each of the gnotobiotic treatments (in rows) at each life stage (in columns). N indicates the total number of transcripts assigned to each metabolic substrate (ND=not detected). **B.** The flowchart shows significantly enriched (red) and depleted (blue) enzymes in the glycerophospholipid metabolism pathways after *Flavobacterium* S and *Paenibacillus* D exposure at the larval

stage (relative to non-axenic controls). Values in brackets are the transcript \log_2 -transformed fold-change of each enzyme in L₄ larvae for *Flavobacterium* S and *Paenibacillus* D, respectively (ns=non-significant). CDIPT: CDP-diacylglycerol--inositol 3-phosphatidyltransferase; LPIAT: lysophospholipid acyltransferase 7; LPGAT: lysophosphatidylglycerol acyltransferase 1; CDS: phosphatidate cytidyltransferase; GPDH: glycerol-3-phosphate dehydrogenase; LPAT: lysophosphatidate acyltransferase; PLD3: phospholipase D3; PTDSS1: phosphatidylserine synthase 1; PISD: phosphatidylserine decarboxylase; LPCAT: lysophospholipid acyltransferase 5; sPLA2: secretory phospholipase A2; EPT1: ethanolamine phosphotransferase; GPAT3: glycerol-3-phosphate O-acyltransferase 3; CRLS1: cardiolipin synthase ; PGS1: CDP-diacylglycerol--glycerol-3-phosphate 3-phosphatidyltransferase; LPIN1: phosphatidate phosphatase LPIN; PAP: diacylglycerol diphosphate phosphatase / phosphatidate phosphatase; ETNPPL: ethanolamine-phosphate phospho-lyase; PCYT2: ethanolamine-phosphate cytidyltransferase.

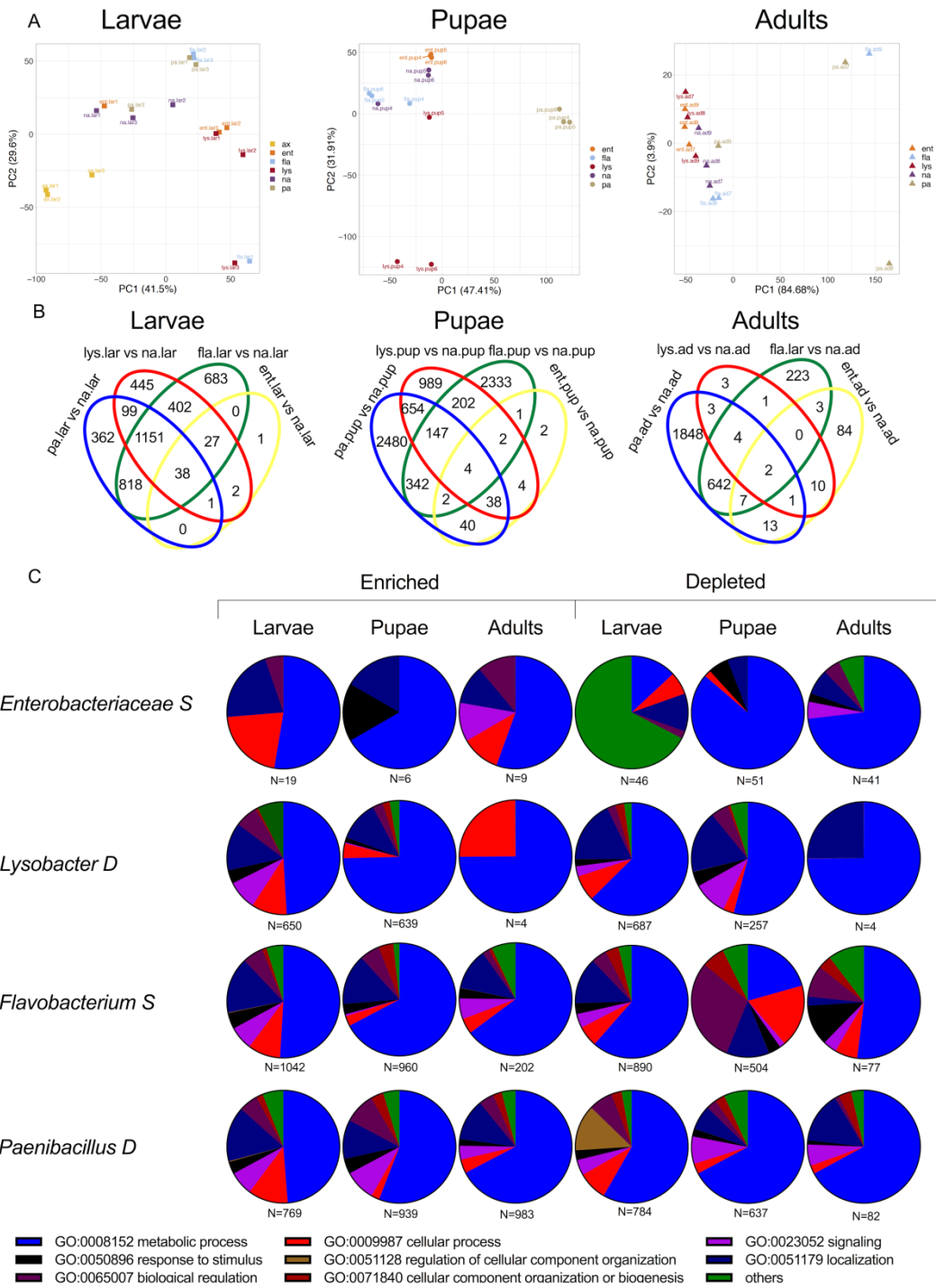
Figure 6. Larval gnotobiotic treatments impact lipid metabolism and resistance to starvation in adult *Ae. aegypti* females. **A.** Bar plots showing the expression levels of triglyceride enzymes in individual adult female mosquitoes (N=9-10 per condition) after larval exposure to *Enterobacteriaceae* S, *Flavobacterium* S, *Lysobacter* D, *Paenibacillus* D or non-axenic control treatment. Expression level was measured by quantitative RT-PCR and normalized to the housekeeping gene *RP49*. EPT1: ethanolamine phosphotransferase; PISD: phosphatidylserine decarboxylase; PLD3: phospholipase D3; LPGAT: lysophosphatidylglycerol acyltransferase 1; sPLA2: secretory phospholipase A2; LPAT: lysophosphatidate acyltransferase and LPCAT: lysophospholipid acyltransferase 5. Asterisks indicate statistically significant differences (* $p < 0.05$, ** $p < 0.005$ and *** $p < 0.001$) between the gnotobiotic treatment and the non-axenic controls according to a Mann–Whitney *U* test. **B.** Bar plot showing total triacylglycerol (TAG) levels in adult female mosquitoes (N=8-10 pools of 3 individuals per condition) after larval exposure to *Enterobacteriaceae* S, *Flavobacterium* S, *Lysobacter* D, *Paenibacillus* D or non-axenic control treatment. TAG levels were assessed enzymatically and normalized to weight. Asterisks indicate statistically significant differences (* $p < 0.05$) between the gnotobiotic treatment and the non-axenic controls according to a Mann–Whitney *U* test. **C.** Kaplan-Meier plots showing adult female survival over time under starvation. Resistance to starvation was measured by monitoring mosquito mortality in triplicate boxes of 10 females at 4- to 8-hour intervals, in two separate experiments. The test statistics of panel **C** are provided in Table S2.



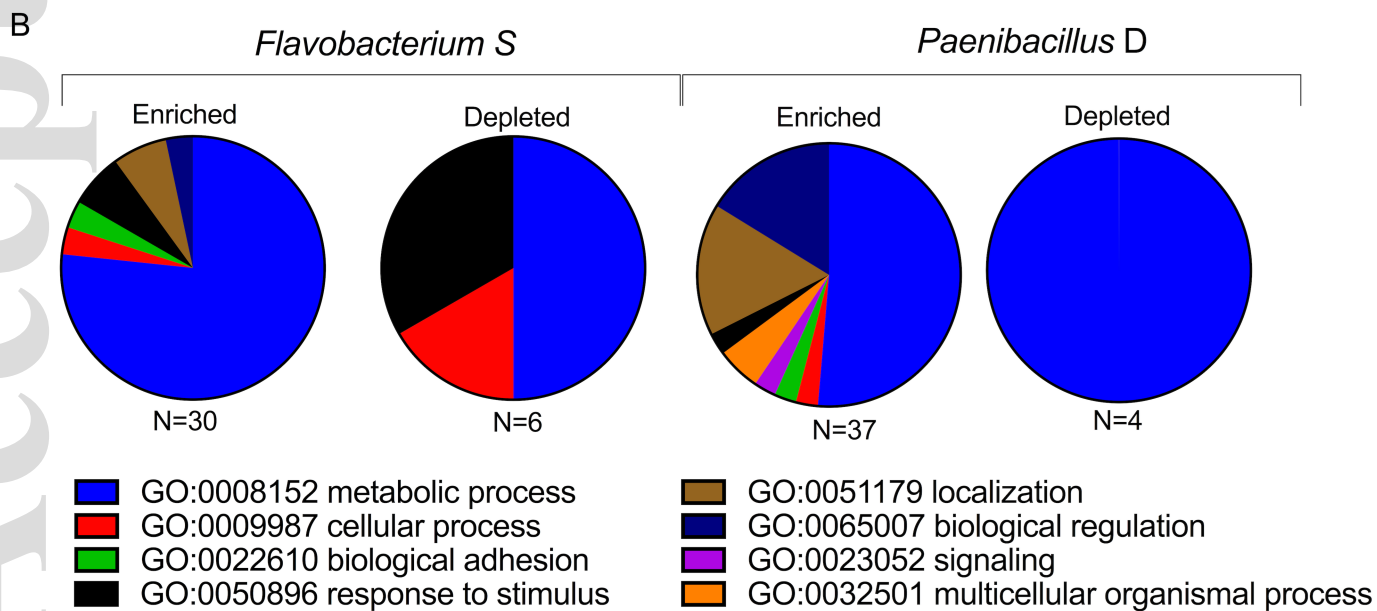
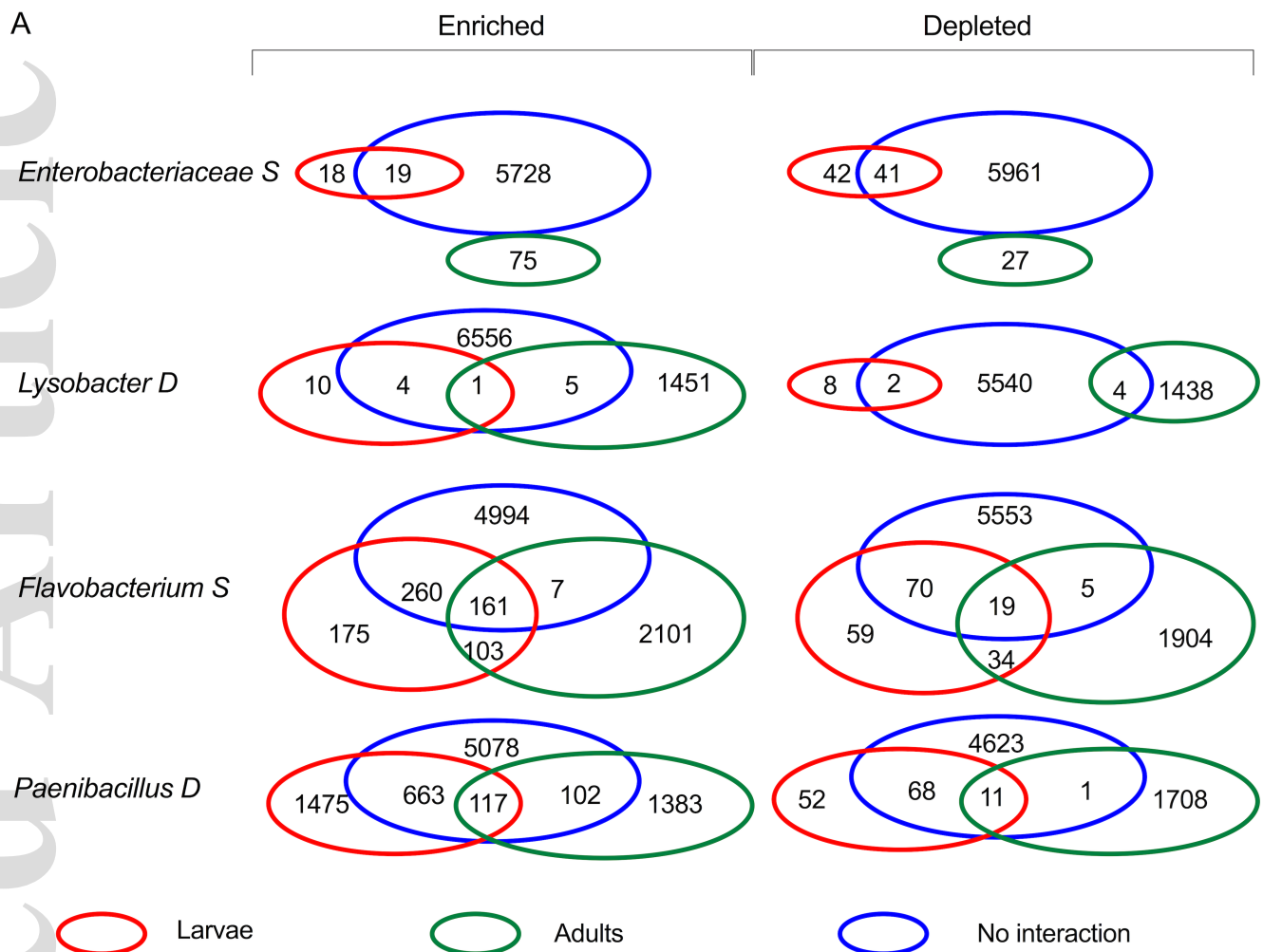
mec_16327_f1.tiff



mec_16327_f2.tiff

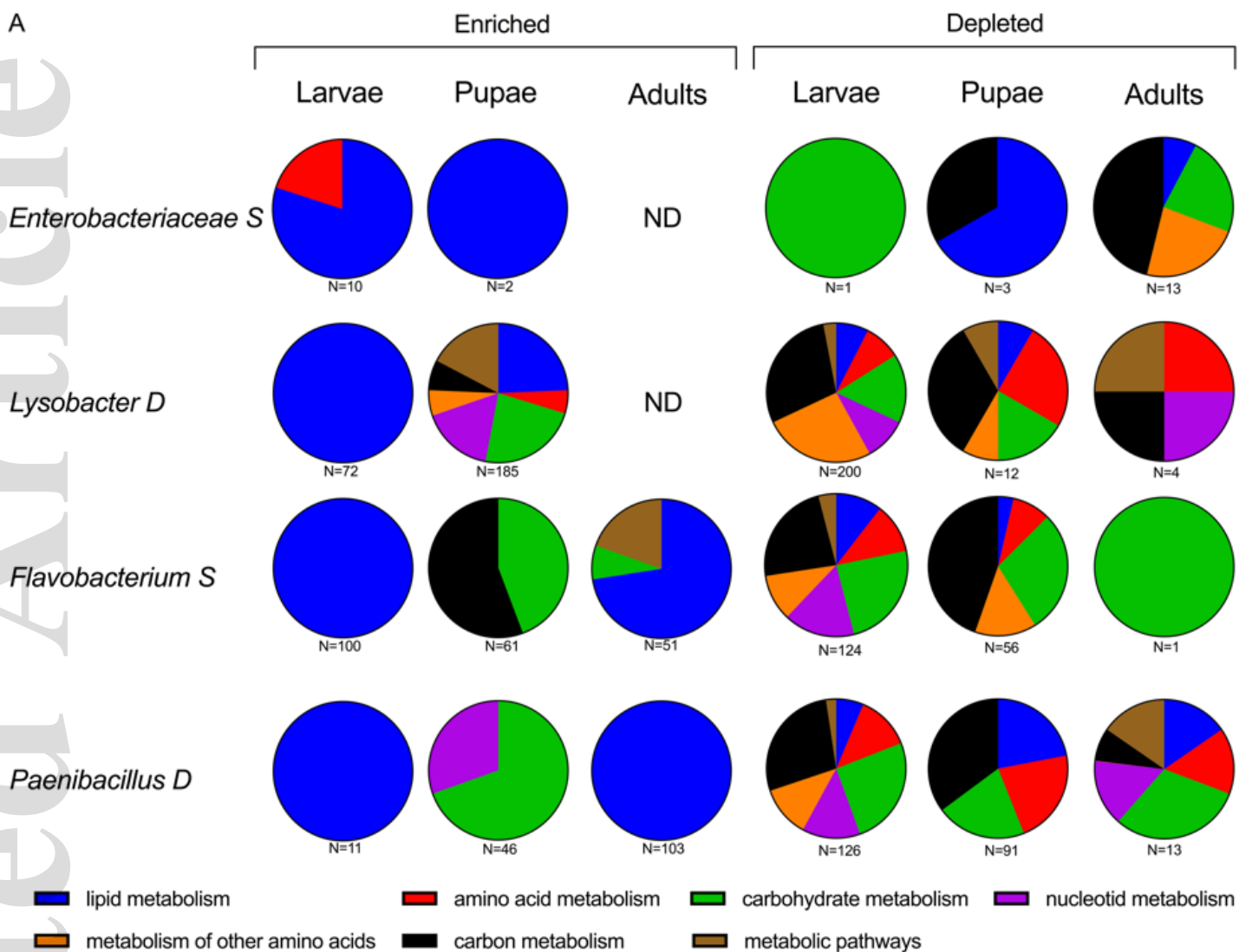


mec_16327_f3.tiff

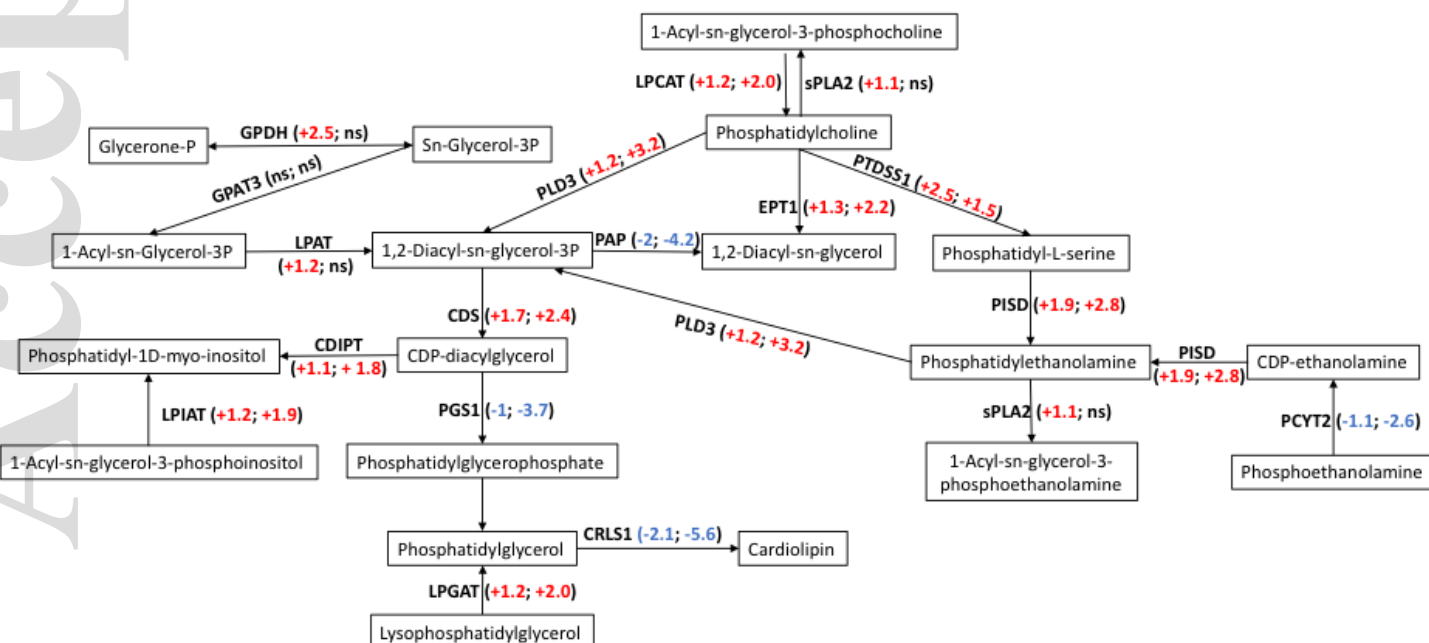


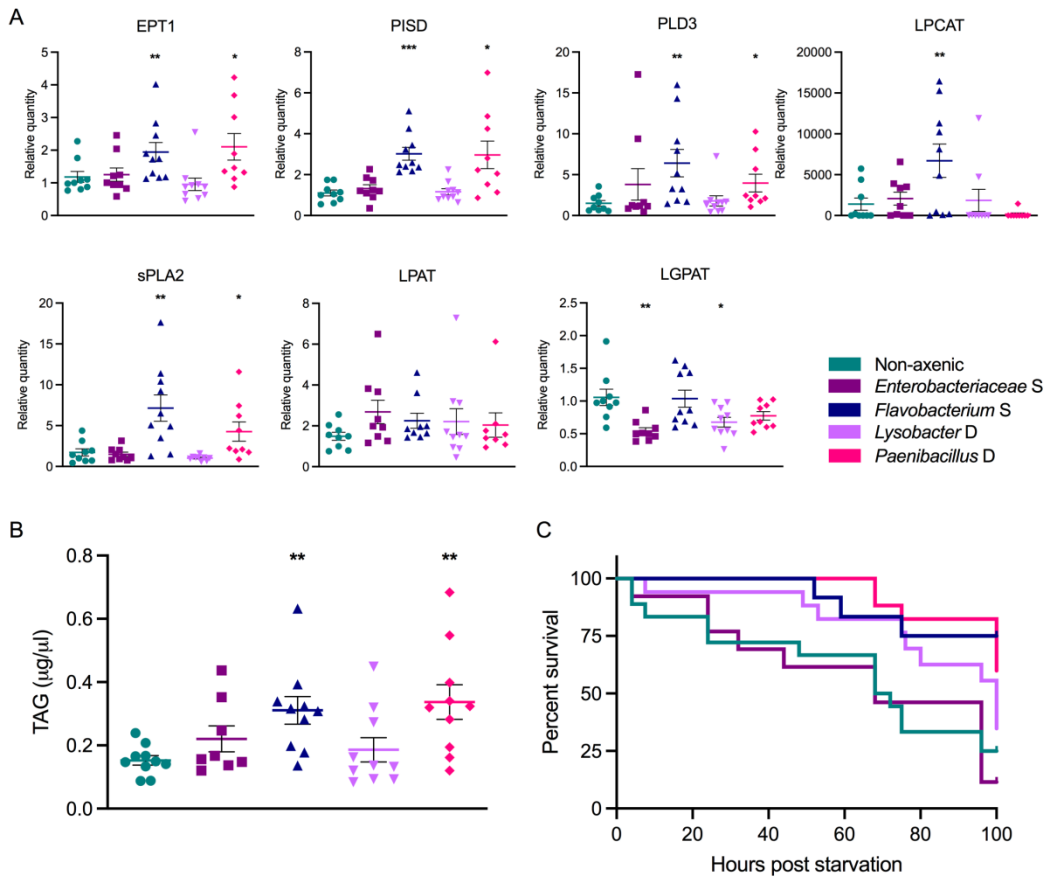
mec_16327_f4.tiff

A



B





mec_16327_f6.tiff