



**HAL**  
open science

## Fractionating autism based on neuroanatomical normative modeling

Mariam Zabihi, Dorothea L. Floris, Seyed Mostafa Kia, Thomas Wolfers, Julian Tillmann, Alberto Llera Arenas, Carolin Moessnang, Tobias Banaschewski, Rosemary Holt, Simon Baron-Cohen, et al.

► **To cite this version:**

Mariam Zabihi, Dorothea L. Floris, Seyed Mostafa Kia, Thomas Wolfers, Julian Tillmann, et al.. Fractionating autism based on neuroanatomical normative modeling. *Translational Psychiatry*, 2020, 10 (1), pp.384. 10.1038/s41398-020-01057-0 . pasteur-03325386

**HAL Id: pasteur-03325386**

**<https://pasteur.hal.science/pasteur-03325386>**

Submitted on 24 Aug 2021

**HAL** is a multi-disciplinary open access archive for the deposit and dissemination of scientific research documents, whether they are published or not. The documents may come from teaching and research institutions in France or abroad, or from public or private research centers.

L'archive ouverte pluridisciplinaire **HAL**, est destinée au dépôt et à la diffusion de documents scientifiques de niveau recherche, publiés ou non, émanant des établissements d'enseignement et de recherche français ou étrangers, des laboratoires publics ou privés.



Distributed under a Creative Commons Attribution 4.0 International License

ARTICLE

Open Access

# Fractionating autism based on neuroanatomical normative modeling

Mariam Zabihi<sup>1,2</sup>, Dorothea L. Floris<sup>1,2</sup>, Seyed Mostafa Kia<sup>1,2</sup>, Thomas Wolfers<sup>1,3,4</sup>, Julian Tillmann<sup>5,6</sup>, Alberto Llera Arenas<sup>1,2</sup>, Carolin Moessnang<sup>7</sup>, Tobias Banaschewski<sup>8</sup>, Rosemary Holt<sup>9</sup>, Simon Baron-Cohen<sup>9</sup>, Eva Loth<sup>10,11</sup>, Tony Charman<sup>12</sup>, Thomas Bourgeron<sup>12</sup>, Declan Murphy<sup>10,11</sup>, Christine Ecker<sup>10,13</sup>, Jan K. Buitelaar<sup>1,2,14</sup>, Christian F. Beckmann<sup>1,2,15</sup> and Andre Marquand<sup>1,2,16</sup>, The EU-AIMS LEAP Group

## Abstract

Autism is a complex neurodevelopmental condition with substantial phenotypic, biological, and etiologic heterogeneity. It remains a challenge to identify biomarkers to stratify autism into replicable cognitive or biological subtypes. Here, we aim to introduce a novel methodological framework for parsing neuroanatomical subtypes within a large cohort of individuals with autism. We used cortical thickness (CT) in a large and well-characterized sample of 316 participants with autism (88 female, age mean:  $17.2 \pm 5.7$ ) and 206 with neurotypical development (79 female, age mean:  $17.5 \pm 6.1$ ) aged 6–31 years across six sites from the EU-AIMS multi-center Longitudinal European Autism Project. Five biologically based putative subtypes were derived using normative modeling of CT and spectral clustering. Three of these clusters showed relatively widespread decreased CT and two showed relatively increased CT. These subtypes showed morphometric differences from one another, providing a potential explanation for inconsistent case–control findings in autism, and loaded differentially and more strongly onto symptoms and polygenic risk, indicating a dilution of clinical effects across heterogeneous cohorts. Our results provide an important step towards parsing the heterogeneous neurobiology of autism.

## Introduction

Autism is a neurodevelopmental condition marked by impairments in social communication and interaction, alongside restricted and repetitive behaviors and sensory atypicalities<sup>1</sup>. It is still diagnosed based on behavioral observations and no validated biomarkers are available which could support diagnosis, stratification, or clinical management<sup>2</sup>. Efforts to identify replicable cognitive and biological substrates of the condition have been hampered by the pronounced biological, developmental, and clinical heterogeneity of individuals with autism<sup>3–7</sup>. Standard case–control analytical approaches ignore such

heterogeneity and assume homogeneous diagnostic entities<sup>8</sup>. Therefore, case–control findings have been highly inconsistent for most neuroimaging derived measures<sup>9–13</sup>, for instance, with some studies reporting increases in cortical thickness (CT)<sup>14,15</sup>, others decreases<sup>16</sup> and others no significant findings, even within the same brain regions. Moreover, the size of reported case–control effects has decreased over time as diagnostic procedures have become more inclusive thereby sampling a broader range of the clinical phenotype<sup>17,18</sup>, causing some to question the notion of biological heterogeneity in autism<sup>18</sup>. Case–control approaches are useful when there are consistent and well-defined alterations in the clinical population. However, the case–control paradigm cannot by definition unravel autism-related heterogeneity in the absence of such consistent alterations. In other words, inconclusive neuroimaging findings are likely the result of such case–control comparisons diluting consistent

Correspondence: Mariam Zabihi (m.zabihi@donders.ru.nl)

<sup>1</sup>Donders Institute for Brain, Cognition and Behavior, Radboud University Nijmegen, Nijmegen, The Netherlands

<sup>2</sup>Department for Cognitive Neuroscience, Radboud University Medical Center Nijmegen, Nijmegen, The Netherlands

Full list of author information is available at the end of the article

© The Author(s) 2020



**Open Access** This article is licensed under a Creative Commons Attribution 4.0 International License, which permits use, sharing, adaptation, distribution and reproduction in any medium or format, as long as you give appropriate credit to the original author(s) and the source, provide a link to the Creative Commons license, and indicate if changes were made. The images or other third party material in this article are included in the article's Creative Commons license, unless indicated otherwise in a credit line to the material. If material is not included in the article's Creative Commons license and your intended use is not permitted by statutory regulation or exceeds the permitted use, you will need to obtain permission directly from the copyright holder. To view a copy of this license, visit <http://creativecommons.org/licenses/by/4.0/>.

alterations within more biologically homogenous subgroups of individuals with autism. Thus, the identification of meaningful subtypes within autism is of utmost importance to facilitate biomarker discovery.

Despite considerable efforts in identifying biologically significant subtypes in autism<sup>19–28</sup>, no consensus has been reached, again due to the high phenotypic and neurobiological variation in autism. Most approaches to stratifying autism have employed clustering algorithms for symptomatology<sup>29–38</sup>. However, there is no guarantee that such behaviorally-defined clusters will map cleanly onto distinct biological mechanisms or outcomes. Moreover, the biologically-defined clustering approaches mostly follow the description of the condition on the group level and recapitulate the case–control paradigm, which often fails to fully capture the complexity of inter-individual alterations<sup>5,27,39</sup>. Thus, the first step towards subtyping autism is to chart the heterogeneity by moving away from the “average patient”, permitting inferences at the individual level. Normative modeling is one data-driven approach that provides a means to achieve this. We have previously applied normative modeling to autism to map neuroanatomical variability at the level of the individual<sup>40</sup>. This analysis showed highly individualized patterns of atypicality across nearly the entire cortex in different individuals. However, in order to better understand the nature of the underlying alterations and to move toward clinically useful stratifications of individuals with autism, it is necessary to go further. Specifically, it is necessary to summarize these complex and highly individualized patterns of deviation into a small number of interpretable neurobiological subtypes. To do so, we build on our previous work that used normative modeling<sup>40</sup> further to find subtypes within the cohort. Here, we achieve this objective by combining normative modeling with clustering, which is appealing for three reasons: first, since the normative range is defined with respect to a supervised mapping between biology and covariates relevant to the disorder (while also accounting for nuisance variation), this allows the clustering algorithm to focus on clinically relevant variation. In contrast, clustering algorithms that operate in a purely unsupervised manner will likely just detect nuisance variation, which is usually of a larger magnitude than clinically relevant effects. Second, the normative model rescales different variables to a common (normative) reference range, yielding clusters that are more interpretable since they are defined with respect to a neurotypical reference group. Third, since the normative model can be learned on very large samples, this allows us to capitalize on big data cohorts to better capture the heterogeneity within clinical cohorts.

We apply this approach to a large and comprehensively characterized autism cohort recruited as part of the

EU-AIMS Longitudinal European Autism Project (LEAP)<sup>41</sup>, which captures a broad range of the autism phenotype, along with extensive clinical phenotyping, multiple neurobiological assessments, and genetics. While normative modeling can predict various brain measures, here we focused on cortical thickness (CT) because firstly, alterations in CT have been extensively reported in different autism studies and secondly, it is a reliable measure of cortical morphology in autism<sup>14,16,42–47</sup>. Similar to other applications in neuroimaging<sup>48–50</sup>, we extensively validate the derived clusters. Specifically, we evaluate their stability, out-of-sample prediction capability, and test for associations with clinical, demographic, and genetic measures. We show that with the right analytical approaches, biological heterogeneity is quantifiable and can be used to derive a stratification of individuals where heterogeneity in the clinical presentation is reduced.

## Methods

We included 206 neurotypical (NT) (79 female, aged  $17.5 \pm 6.1$  years) and 316 participants with autism (88 female, aged  $17.2 \pm 5.7$ ) including mild intellectual disability participants across 6 sites from the EU-AIMS LEAP sample<sup>41</sup>. All participants were scanned with a T1-weighted imaging protocol, and FreeSurfer (v5.3)<sup>51</sup> was used to estimate measures of regional CT. This sample has been described in detail previously<sup>41</sup> as have the normative models that form the basis for this work<sup>40</sup>. However, we briefly summarize the clinical recruitment procedures, sample characteristics, processing steps, and procedures for normative modeling in the Supplementary Methods and Supplementary Table S1.

A methodological overview of our approach is shown in Supplementary Fig. S1 and full details are provided in the Supplementary Methods. Briefly, for each participant, we estimated normative models to predict vertex-wise cortical thickness as a function of age and sex plus nuisance covariates including full-scale IQ, plus dummy coded site variables and the FreeSurfer Euler number (a proxy for scan quality) using Gaussian process regression. Then, we estimated normative probability maps (NPMs), which quantify the deviation from normative CT, by subtracting the predicted from true CT, divided by the estimated variance at each vertex to construct a subject- and vertex-specific Z-score.

In order to partition the autism cohort into sub-clusters on the basis of the normative model estimated on the NT participants, we first applied spectral clustering with a cosine similarity affinity matrix<sup>52,53</sup> to the un-thresholded NPMs from the participants with autism.

Next, we applied a multi-class (one-vs-all) linear support vector machine (SVM) to quantify cluster separability within the autism cohort on the basis of the NPMs and perform model order selection (see Supplementary

Methods for full details). The number of clusters was determined using the pairwise Area Under the Receiver Operating Characteristic Curve (AUROC) for model orders  $K = 2$  to 10. Moreover, we tested the stability of the model using a leave-one-out procedure we have proposed previously<sup>54</sup>.

Next, to evaluate the clinical separability of the clusters, we trained an identical linear SVM to discriminate the clusters using 10 demographic and clinical measures: sex, IQ (verbal, performance and full-scale IQ (VIQ/PIQ/FIQ)), Autism Diagnostic Interview-Revised (ADI-R)<sup>55</sup> and Autism Diagnostic Observation Schedule (ADOS)-2 calibrated severity scores<sup>56</sup>. Due to the differential availability of measures, we only included participants with data for all clinical measures. This resulted in a decreased sample size of 243 individuals with autism. However, we repeated the analysis with imputed measures, which led to identical conclusions (see Supplementary Methods and Supplementary Table S2). To highlight the important regions for discriminating each cluster we calculated structure coefficients for each class separately<sup>57,58</sup>.

We then assessed associations of each cluster with behavioral measures on the basis of the deviations from the normative model. We first summarized each NPM into a single global measure of deviation—an “atypicality index” for each participant by taking a trimmed mean of 1% of the top absolute deviations across all vertices (Supplementary Methods)<sup>40,59</sup> and calculated Spearman’s correlation between the atypicality index with ADOS-2 and ADI-R scores, Social Responsiveness Scale-2 (SRS-2)<sup>60</sup>, Repetitive Behavioral Scale-Revised (RBS-R)<sup>61</sup> and Short Sensory Profile (SSP)<sup>62</sup>, along with the DSM-5 parent-rated scale for attention deficit hyperactivity disorder (ADHD) symptoms (inattention and hyper-impulsivity), both across the whole cohort and within each cluster. To assess the spatial distribution of relevant effects, we also computed atypicality indices for each region after parcellating the cortex using the Desikan–Killiany atlas<sup>63</sup> and computed correlations with the same measures. See the Supplementary Information for details.

Last, to evaluate the correspondence of the clusters with underlying genetic profiles, we computed the association of the overall atypicality index with polygenic scores (PS) for seven traits (autism, ADHD, epilepsy, FIQ, neuroticism, schizophrenia, and cross disorder risk for psychiatric disorders) using Spearman’s correlation. See the Supplementary Methods for details.

## Results

The average AUROC per model order is shown in Supplementary Fig. S2A indicating that  $K = 5$  yielded the highest cluster separability and also was highly stable (Supplementary Fig. S2B).

Table 1 provides the distribution of the clusters in terms of age, sex, and clinical measures. The clusters are evenly distributed across sites, with no obvious evidence for site-related bias (Supplementary Figs. S3 and S4A, B). Cluster 1 contained slightly more females and were slightly younger than the other classes (Table 1). Cluster 2 contained subjects with higher impairment relative to the other clusters, having lower IQ and—relative to some of the other clusters—more severe core autism symptoms across diagnostic instruments (early childhood social symptoms based on ADI-R and current RRB symptoms based on ADOS-2) and ADHD symptoms. None of the other clusters differed in terms of any considered measures.

In terms of anatomical separability, the average pairwise AUROC scores across clusters were above 90% for all clusters ( $P < 0.0001$ , permutation test). See Supplementary results and Supplementary Fig. S5A, B for more details of anatomical separability performance. Figure 1a shows the structure coefficients indicating the regional differences, which correspond with the mean CT in each cluster shown in Fig. 1b. See Supplementary Fig. S6 for more details. Figure 1a shows striking differences between subtypes: clusters 1, 2, and 3 have reduced CT relative to the expected neurotypical pattern whereas clusters 4 and 5 have increased CT relative to the expected pattern. Clusters also varied in terms of spatial distribution. For instance, clusters 5 and 4 had increased CT in the prefrontal and posterior parietal cortex, respectively, while cluster 3 had reduced CT in temporal gyrus and cluster 1 shows decreasing CT in the anterior premotor cortex.

Figure 2 shows the correlation of behavioral measures with the atypicality index across the cohort and per cluster, corrected within symptom domains and across clusters. While the top panel indicates only moderate correlations of several behavioral measures with the atypicality index across the cohort, the magnitude of correlations increased for nearly all measures when considering them by cluster and additional associations reached significance for some measures (e.g., ADI-RRB). This provides evidence that clinical associations are diluted across the cohort. The only exception to this pattern was the association with ADI-social, which reached nominal significance across the entire sample but not in any subtypes.

Moreover, the classifier trained on the clinical and behavioral scores also discriminated the clusters above chance level under cross-validation (accuracy = 0.32 chance = 0.20, AUROC scores = 0.58,  $P < 0.05$ , permutation test). See Supplementary Results and Supplementary Fig. S7A, B.

The regional associations with symptoms are shown in Fig. 3. These show a similar pattern in that the different clusters are associated with similar symptoms and in nearly all cases associations become stronger for each

**Table 1 Age, sex, and clinical and behavioral scores distribution across clusters.**

Measure	Total	Cluster 1	Cluster 2	Cluster 3	Cluster 4	Cluster 5	P-value	Post-hoc test
Number of participants [F%]	316 [28%]	60 [43%]	55 [24%]	65 [26%]	55 [25%]	81 [22%]	0.06 (ns)	
Age: mean $\pm$ std	17.2 $\pm$ 5.7	14.1 $\pm$ 5.5	17.3 $\pm$ 5.7	17.1 $\pm$ 5.7	18.9 $\pm$ 5.7	18.2 $\pm$ 5.1	<0.001*	1 > 2,3,4,5
IQ								
Verbal IQ	99.6 $\pm$ 18.5	106.6 $\pm$ 14.7	83.7 $\pm$ 16.7	107.4 $\pm$ 13.6	96.1 $\pm$ 15.9	101.6 $\pm$ 19.9	<0.001*	1 > 2,4; 2 < 3,4,5; 3 > 4
Performance IQ	101.7 $\pm$ 20.1	104.8 $\pm$ 17.7	84.9 $\pm$ 19.2	112.3 $\pm$ 15.5	100.5 $\pm$ 20.4	103.4 $\pm$ 18.0	<0.001*	2 < 1,3,4,5; 3 > 4,5
Full-Scale IQ	100.9 $\pm$ 18.5	105.9 $\pm$ 15.7	83.4 $\pm$ 17.1	110.1 $\pm$ 13.4	98.2 $\pm$ 15.7	103.5 $\pm$ 18.3	<0.001*	2 < 1,3,4,5; 3 > 4
ADI-R								
Social	16.2 $\pm$ 6.7	15.3 $\pm$ 6.4	18.9 $\pm$ 6.6	15.4 $\pm$ 6.9	15.6 $\pm$ 6.4	16.3 $\pm$ 6.6	0.03*	2 > 3,1
Communication	13.2 $\pm$ 5.7	13.0 $\pm$ 4.9	15.3 $\pm$ 5.5	12.6 $\pm$ 5.8	12.9 $\pm$ 6.1	12.6 $\pm$ 5.6	0.06 (ns)	
Repetitive behavior	4.3 $\pm$ 2.7	4.0 $\pm$ 2.8	5.1 $\pm$ 2.6	4.5 $\pm$ 2.6	3.8 $\pm$ 2.1	4.2 $\pm$ 2.8	0.09 (ns)	
ADOS-2								
Total	5.2 $\pm$ 2.8	4.9 $\pm$ 2.8	5.9 $\pm$ 3.0	4.7 $\pm$ 2.8	4.7 $\pm$ 2.3	5.6 $\pm$ 2.7	0.08 (ns)	
Social affect	5.8 $\pm$ 2.6	5.5 $\pm$ 2.7	6.2 $\pm$ 2.7	5.6 $\pm$ 2.6	5.7 $\pm$ 2.4	6.2 $\pm$ 2.6	0.52 (ns)	
Repetitive behavior	4.7 $\pm$ 2.7	4.7 $\pm$ 2.6	5.7 $\pm$ 3.1	4.1 $\pm$ 2.5	4.0 $\pm$ 2.4	5.0 $\pm$ 2.6	0.01*	2 > 3,4
SRS-2I								
Score	70.9 $\pm$ 11.9	71.8 $\pm$ 12.4	72.5 $\pm$ 11.1	69.9 $\pm$ 11.8	70.1 $\pm$ 11.8	70.6 $\pm$ 12.0	0.81 (ns)	
SRS-2 self-report								
Score	63.1 $\pm$ 10.0	65.8 $\pm$ 8.2	68.0 $\pm$ 12.0	61.4 $\pm$ 9.9	60.2 $\pm$ 8.9	62.4 $\pm$ 9.3	0.02*	2 > 4
RBS-R								
Score	15.4 $\pm$ 13.0	15.5 $\pm$ 14.9	20.4 $\pm$ 15.7	14.5 $\pm$ 10.4	13.1 $\pm$ 10.7	14.8 $\pm$ 12.1	0.12 (ns)	–
SSP								
Score	140.0 $\pm$ 26.2	142.2 $\pm$ 25.7	134.2 $\pm$ 28.9	144.4 $\pm$ 24.7	136.9 $\pm$ 25.6	140.1 $\pm$ 25.7	0.59 (ns)	–
ADHD								
Hyperactivity/impulsivity	2.5 $\pm$ 2.7	3.1 $\pm$ 2.8	3.6 $\pm$ 3.0	2.1 $\pm$ 2.7	2.3 $\pm$ 2.4	2.0 $\pm$ 2.4	0.01*	2 > 5
Inattention	4.2 $\pm$ 3.1	4.3 $\pm$ 3.2	5.2 $\pm$ 3.1	3.6 $\pm$ 2.9	4.4 $\pm$ 3.2	4.0 $\pm$ 3.0	0.15 (ns)	–

Cluster differences were assessed via one-way ANOVAs, followed by post-hoc tests to quantify main effects (Tukey Honest Significant Differences). Only for sex distribution across clusters, we used Chi-square statistic. See text for a description of the measures.

ADI-R Autism Diagnostic Interview—Revised, ADOS Autism Diagnostic Observation Schedule, RBS-R Repetitive Behavioral Scale-Revised, SRS Social Responsiveness Scale, SSP Short Sensory Profile.

\* $P < 0.05$ .

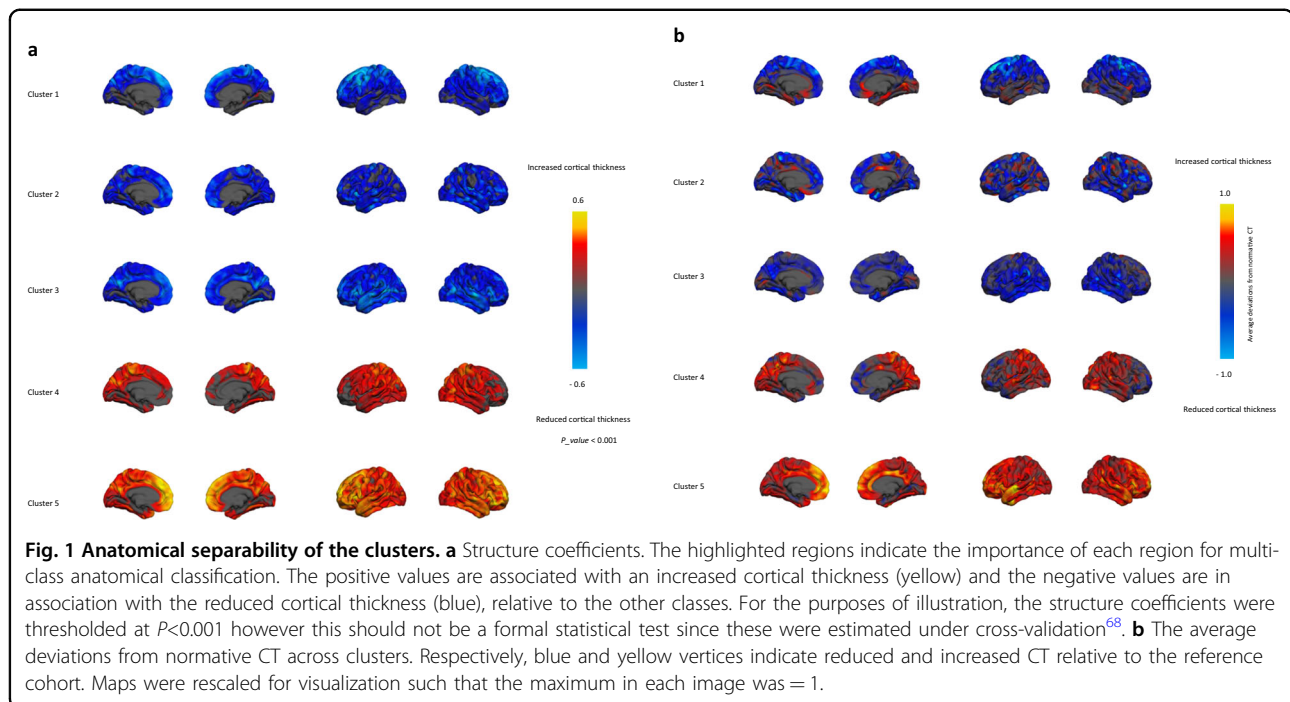
cluster relative to across the cohort. This again indicates that clinical effects are diluted across the whole cohort relative to within clusters: for parent-reported measures of ADHD, social-communicative symptoms (SRS-2) and restricted and repetitive behaviors (RBS-R), the correlation becomes stronger within the cluster and the association with early childhood repetitive behaviors and social symptoms (ADI-R RRB and social) exclusively appears within the clusters. Finally, cluster 1 also shows focal associations with sensory atypicalities and early childhood repetitive behaviors, which were not evident at the whole-brain level.

Finally, the association of the atypicality index with polygenic scores (Supplementary Fig. S8) shows a similar pattern, namely that associations become stronger

within the clusters, but in this case, the only cluster 3 was associated with polygenic risk for autism and schizophrenia.

## Discussion

In this study, we aimed to understand the biological heterogeneity of autism by identifying potential neuroanatomical subtypes within a large and well-phenotyped cohort. To do so, we employed spectral clustering on the individual-level deviations from a normative model of CT development. Normative modeling learns supervised mappings that describe cortical development, also accounting for sex and nuisance variation. This allows the clustering algorithm to focus upon clinically relevant variation better than by clustering the data directly and

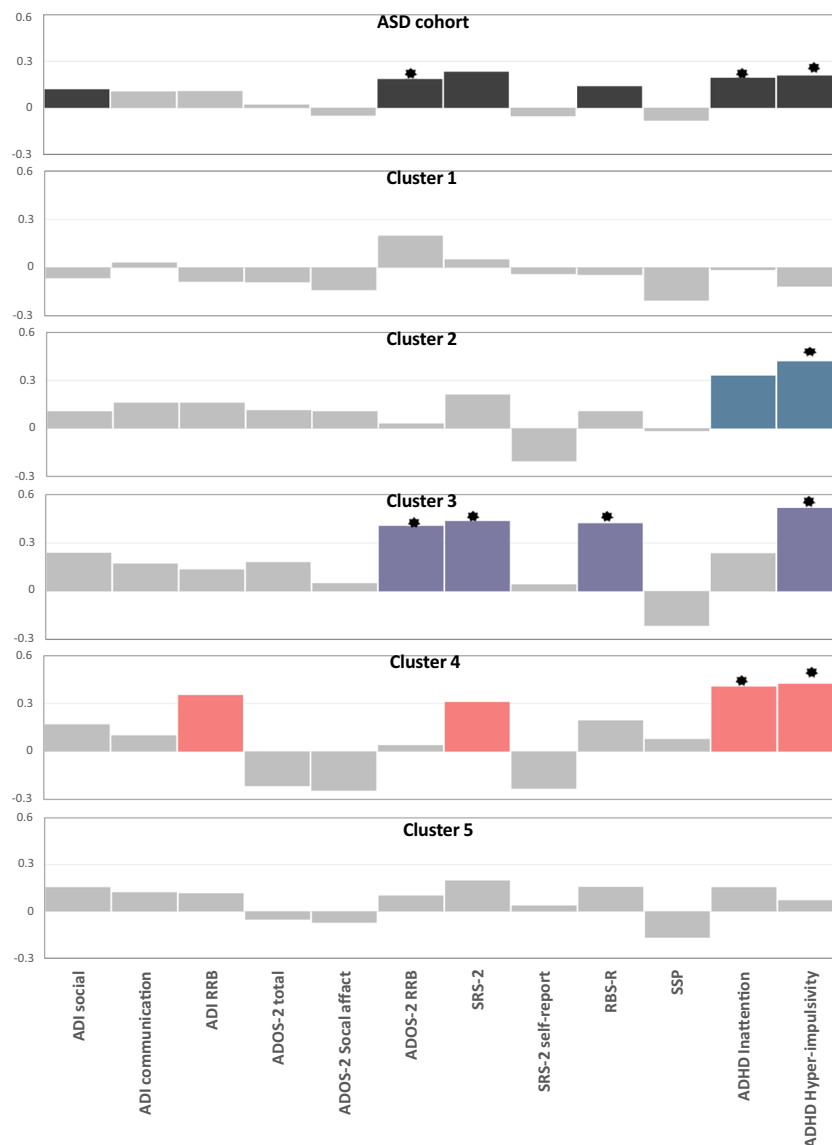


therefore more precisely dissect biological heterogeneity<sup>40,64</sup>. Through this, we identify five putative neuroanatomical subtypes within the cohort that: (i) show striking differences in that some subtypes have reduced cortical thickness relative to the neurotypical pattern and others have increased thickness; (ii) could be accurately classified from one another out of sample; (iii) predict differential symptom profiles; (iv) load differentially onto underlying genetic risk and most importantly, (v) are more strongly associated with symptoms than associations across the whole cohort. Taken together, our results show that aggregating effects across individuals dilutes the strength of clinically relevant associations and by stratifying individuals according to their underlying biological signature it is possible to reduce the heterogeneity in clinical presentation.

Among the five subtypes, three showed widespread decreased CT, and two showing increased cortical thickness reflecting ~57% and 43% of the cohort, respectively. These distinct and opposing expressions of CT atypicalities across different individuals with autism provide an explanation of why classical case–control analyses provide inconsistent findings and why they often reveal no or only modest group differences<sup>42,46</sup>.

Sub-dividing individuals with autism into more homogenous subtypes has important clinical implications. Specifically, even though clusters of different CT profiles are solely based on imaging phenotypes, they can still be discriminated based on clinical profiles. Only cluster (1) was weakly associated with age and there were moderate

differences in IQ between clusters but no strong association with symptoms. Together this suggests that subtypes reflect distinct cortical fingerprints rather than different neurodevelopment stages or simply different symptom groups. It is increasingly well recognized that there is no reason to believe that distinct biological subtypes will map cleanly onto different symptom groups because distinct pathophysiological pathways likely converge on the same symptoms<sup>5,21</sup>. Therefore, we consider that comparing the strength of associations between biological readouts and clinically relevant variables within clusters rather than across the cohort provides a better evaluation of whether the clusters explain clinically relevant mechanisms than testing for mean differences in clinical variables between clusters. More specifically, because there is no one-to-one mapping between biology and symptoms, the increased homogeneity within a cluster does not necessarily translate into increased homogeneity of the clinical profile. Also, it should be remembered that the patterns of deviation are complex and for the purposes of computing clinical associations, we summarize these patterns in an atypicality index, which is a single number describing maximum overall deviation. Other indices are also possible, which may reflect different features of the underlying patterns of deviation. In addition, and in contrast with recent suggestions that the heterogeneity underlying autism is not a biological fact of nature<sup>18,65</sup>, our results suggest that with the right analytical approach, biological heterogeneity is not only quantifiable but also leads to a stratification of

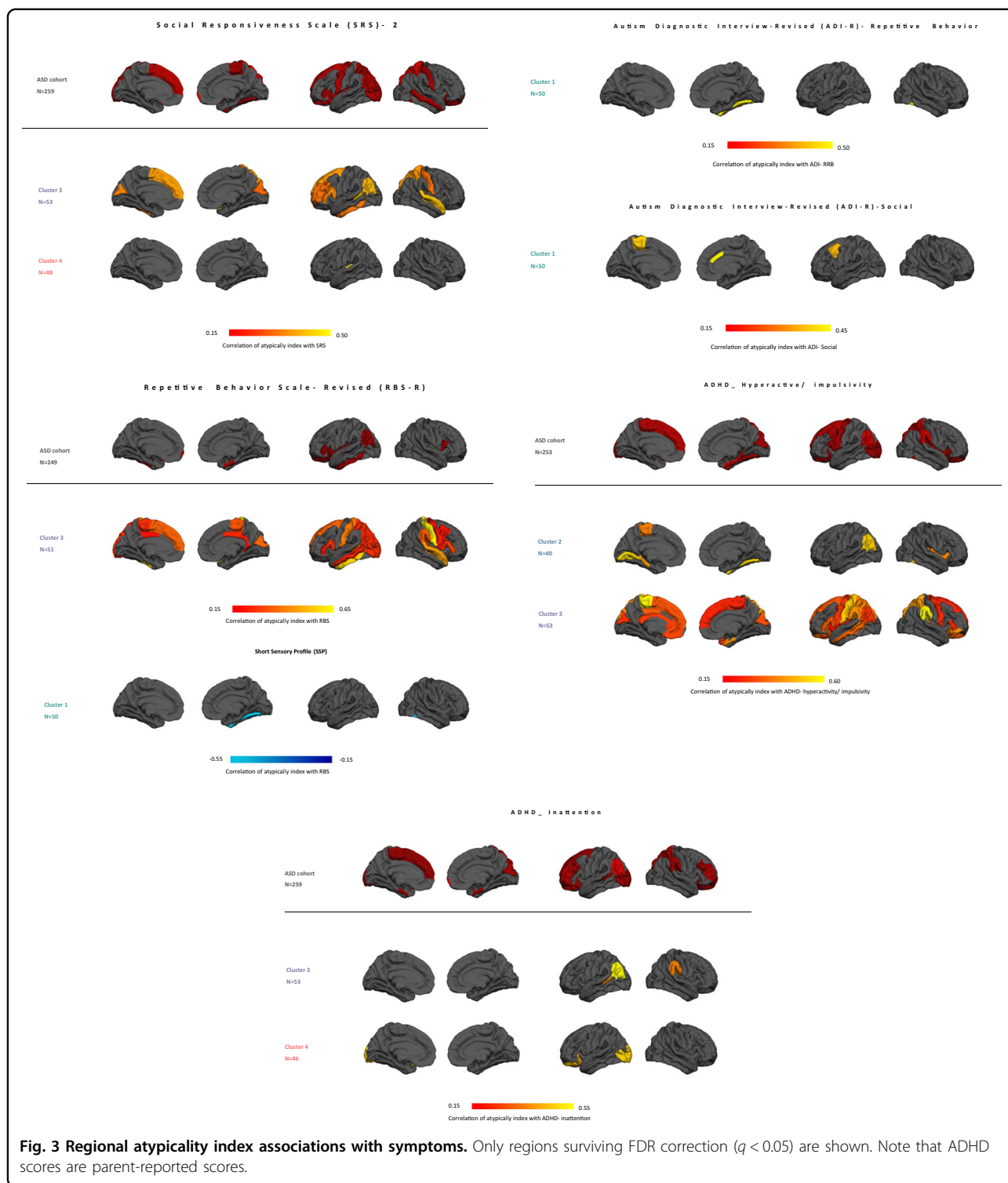


**Fig. 2 Correlation of atypicality index with symptoms.** Colored bars show a correlation with  $P < 0.05$ . \* indicates significant correlations after FDR correction across clusters and blocks. Note that the y axis is fixed across all panels. Autism Diagnostic Interview-Revised (ADI-R), Autism Diagnostic Observation Schedule (ADOS)-2 calibrated severity scores, Social Responsiveness Scale-2 (SRS-2), Repetitive Behavioral Scale-Revised (RBS-R), Short Sensory Profile(SSP), DSM-5 ADHD rating scale for attention deficit hyperactivity disorder (ADHD) symptoms (inattention and hyper-impulsivity). The ADHD scores are parent-report scores.

individuals having more consistent biological profiles than can be detected by case-control comparisons. Our results indicate those inconclusive findings in the autism literature may be the result of the approaches that assume the autism cohort is well-defined and homogeneous.

Among the clusters we have reported, three (clusters 2, 3, and 4) demonstrated specific patterns of alterations relevant to symptoms at the whole-brain level and cluster 1 additionally showed regionally specific associations. Among core autism symptoms, the associations were most prominent with repetitive behaviors.

Cluster 3 (~21% of individuals with autism), was the only cluster that showed associations with core autism symptoms (i.e., RBS, SRS, and ADOS-2-RRB) plus hyperactivity-impulsivity and was also the only cluster to show associations with polygenic risk. Neuroanatomically, cluster 3 involves dorsal frontal eye fields plus anterior cingulate, premotor, auditory, and temporal cortices (Fig. 1). Taken together, this suggests this cluster represents patients with a broad clinical phenotype who were impaired across multiple domains combined with prominent alterations in patterns of CT.



Cluster 2 (17% of individuals with autism), was associated with comorbid ADHD symptoms and neuroanatomically widespread cortical thinning prominently in the dorso-lateral and anterior prefrontal cortex, orbitofrontal area, dorsal anterior cingulate cortices, primary somatosensory

cortex, superior parietal lobule, primary motor cortex, temporal gyrus, and Broca’s area (Fig. 1). Alterations in similar brain regions have previously been reported in individuals with ADHD<sup>66,67</sup>. This points to overlap of the pathophysiological pathways underlying autism and ADHD.



Cluster 4 (17% of participants with autism), was also most strongly associated with inattention and hyper-impulsivity but also showed nominally significant associations with SRS and ADI-R-RRB, although these did not survive multiple comparison correction. The anatomical profile of cluster 4 exhibits cortical thickening mainly in the primary somatosensory and motor cortex, superior parietal lobule, associative visual cortex and, frontal eye fields. Associations with ADI-social scores (even though weak) only emerged across the entire sample (i.e., that was not also significant for some of the subtypes), potentially implying that social deficits are a unifying feature across all individuals with autism.

Many studies have focused on finding subtypes based on behavioral and clinical measures<sup>22,29–31</sup>. As an example, Fountain et al.<sup>32</sup> reported six subtypes on the basis of social, communication, and repetitive behavior functioning scores. While this is intuitively appealing, there is no guarantee that such subtypes map onto neurobiologically distinct phenotypes. Indeed, our results show that highly different patterns of atypicality are associated with symptoms across the cohort, which illustrates why clustering on the basis of symptoms may not yield biologically relevant stratifications. In contrast, Hong et al.<sup>24</sup> developed an approach to multidimensional neuroimaging data. Other approaches<sup>23–26,32,33</sup>, similarly aimed to biologically stratify autism using raw data features (i.e., without considering individualized alterations from a normative pattern). We consider that the approach we have employed (i.e., finding consistent patterns of individualized variation from a normative pattern) leads to more interpretable clusters than clustering the data directly since it accounts for multiple sources of variation. Another feature of our approach is that it capitalizes upon both dimensional and categorical aspects of the neurobiology of autism. Specifically, the normative model captures dimensional variation to provide an optimal representation for finding categorical differences (i.e., clusters). This is complimentary to a recent study<sup>27</sup>, which also adopted a dimensional approach by estimating potentially overlapping autism-related latent factors learned from functional connectivity data. While a direct comparison of these different analytical approaches is beyond the scope of the present work, in our data, it is salient that in our data the clusters had very low overlap with one another. More generally, finding latent factors is well suited to finding latent profiles that overlap across subjects, whereas clustering is suited for finding subjects that share a common profile. Despite strong anatomical separability and behavioral associations within the clusters we report, we are cautious about claiming that there are definitively five subtypes of autism because we consider that requires further validation than was undertaken here. For example, it will be important to validate these

findings across additional cohorts and in terms of the ability to predict the clinical outcomes or additional biological or phenotypic measures. Rather, we are using clustering as a tool to fractionate the clinical phenotype of autism on the basis of the underlying biology and to understand variation across clinically realistic cohorts. An additional important consideration that we have identified previously is to test against the ‘null’ distribution of no clusters in the data<sup>54</sup>. This was not feasible in this study because of the high dimensionality of the clustering problem (i.e., making it difficult to sample realistic ‘null’ biological patterns). However, the fact that we have stronger associations with behavior in many distinct clinical measures, as well as polygenic scores relative to across the whole cohort strongly suggests that the clustering is more meaningful than a simple continuum. Assessment of other LEAP data modalities (e.g., EEG, eye-tracking, diffusion-weighted imaging) will be the subject of future studies.

There is a number of limitations associated with the current study. Firstly, there was a large number of missing clinical and behavioral data, which complicated analyses and led to a reduction of power in follow-up analyses. Most importantly, for the genetic analysis, the interpretation of the results should be made in the context of relatively low statistical power for each class and should be considered illustrative until our findings can be validated in larger cohorts. It is also possible that data were not missing at random. Secondly, regarding the anatomical data, we did not perform any manual edits on the cortical surface reconstructions. While this eliminates one potential source of operator bias, the quality of the surface reconstructions could be improved in some cases by performing manual edits.

In conclusion, we identified several putative autism subtypes across a highly heterogeneous cohort. These were highly anatomically distinct and showed stronger clinical, behavioral, and genetic associations than across the whole cohort. This is a promising step towards stratification tools and a better understanding of the heterogeneous neurobiology of autism.

#### Acknowledgements

We gratefully acknowledge the support of the EU-AIMS (European Autism Interventions) Longitudinal European Autism Project study team for data acquisition, quality control, and preprocessing. The work is supported by the Netherlands Organization for Scientific Research VIDI Grant Nos. 016.156.415 (to A.F.M.) and 864.12.003 (to C.F.B.); European Union Seventh Framework Program Grant Nos. 602805 (AGGRESSOTYPE) (to J.K.B.), 603016 (MATRICS) (to J.K.B.), and 278948 (TACTICS) (to J.K.B.); European Community's Horizon 2020 Program (H2020/2014–2020) Grant Nos. 643051 (MiND) (to J.K.B.) and 642996 (BRAINVIEW) (to J.K.B.); Wellcome Trust UK Strategic Award Grant No. 098369/Z/12/Z (to C.F.B.); and EU-AIMS (European Autism Interventions), which receives support from Innovative Medicines Initiative Joint Undertaking Grant No. 115300, the resources of which are composed of financial contributions from the European Union's Seventh Framework Program (Grant No. FP7/2007–2013), from the European Federation of Pharmaceutical Industries and Associations companies' in-kind contributions and Innovative Medicines

Initiative 2 Joint Undertaking Grant No. 777394 for the project AIMS-2-TRIALS. This Joint Undertaking receives support from the European Union's Horizon 2020 research and innovation program and EFPIA and AUTISM SPEAKS, Autistica, SFARI. D.M. was also supported by the NIHR Maudsley Biomedical Research Centre. S.B.-C. was funded by the Wellcome Trust and the Autism Research Trust during the period of this work.

#### Author details

<sup>1</sup>Donders Institute for Brain, Cognition and Behavior, Radboud University Nijmegen, Nijmegen, The Netherlands. <sup>2</sup>Department for Cognitive Neuroscience, Radboud University Medical Center Nijmegen, Nijmegen, The Netherlands. <sup>3</sup>Division of Mental Health and Addiction, Norwegian Centre for Mental Disorders Research (NORMENT), University of Oslo & Oslo University Hospital, Oslo, Norway. <sup>4</sup>Department of Psychology, University of Oslo, Oslo, Norway. <sup>5</sup>Department of Psychology, Institute of Psychiatry, Psychology, & Neuroscience, King's College London, London, UK. <sup>6</sup>Department of Applied Psychology: Health, Development, Enhancement, and Intervention, University of Vienna, Vienna, Austria. <sup>7</sup>Department of Psychiatry and Psychotherapy, Central Institute of Mental Health, University of Heidelberg, Mannheim, Germany. <sup>8</sup>Department of Child and Adolescent Psychiatry and Psychotherapy, Central Institute of Mental Health, Medical Faculty Mannheim/Heidelberg University, Mannheim, Germany. <sup>9</sup>Autism Research Centre, Department of Psychiatry, University of Cambridge, Cambridge, UK. <sup>10</sup>Sackler Institute for Translational Neurodevelopment, Institute of Psychiatry, Psychology & Neuroscience, King's College London, London, UK. <sup>11</sup>Department of Forensic and Neurodevelopmental Sciences, Institute of Psychiatry, Psychology & Neuroscience, King's College London, London, UK. <sup>12</sup>Human Genetics and Cognitive Functions, Institut Pasteur, UMR3571 CNRS, Université de Paris, Paris, France. <sup>13</sup>Department of Child and Adolescent Psychiatry, Psychosomatics and Psychotherapy, University Hospital Frankfurt am Main, Goethe University, Frankfurt, Germany. <sup>14</sup>Karakter Child and Adolescent Psychiatry University Centre, Nijmegen, The Netherlands. <sup>15</sup>Centre for Functional MRI of the Brain, University of Oxford, Oxford, UK. <sup>16</sup>Department of Neuroimaging, Institute of Psychiatry, Psychology, & Neuroscience, King's College London, London, UK

#### Conflict of interest

J.K.B. has been a consultant to, advisory board member of, and a speaker for Janssen Cilag BV, Eli Lilly, Shire, Lundbeck, Roche, and Servier. He is not an employee of any of these companies and not a stock shareholder of any of these companies. He has no other financial or material support, including expert testimony, patents, or royalties. CFB is director and shareholder in SBGNeuro Ltd. T.B. served in an advisory or consultancy role for Actelion, Hexal Pharma, Lilly, Lundbeck, Medice, Novartis, and Shire. He received conference support or speaker's fee from Lilly, Medice, Novartis, and Shire. He has been involved in clinical trials conducted by the Shire and Vifor Pharma. He received royalties from Hogrefe, Kohlhammer, CIP Medien, and Oxford University Press. The present work is unrelated to the above grants and relationships. COIs. DM has served on advisory boards for Roche and Servier. The other authors report no biomedical financial interests or potential conflicts of interest.

#### Publisher's note

Springer Nature remains neutral with regard to jurisdictional claims in published maps and institutional affiliations.

**Supplementary Information** accompanies this paper at (<https://doi.org/10.1038/s41398-020-01057-0>).

Received: 8 June 2020 Revised: 29 September 2020 Accepted: 19 October 2020

Published online: 06 November 2020

#### References

- American Psychiatric Association & American Psychiatric Association. *DSM-5 Task Force. Diagnostic and Statistical Manual of Mental Disorders: DSM-5* (APA, 2013).
- Frye, R. E. et al. Emerging biomarkers in autism spectrum disorder: a systematic review. *Ann. Transl. Med.* **7**, 792–792 (2019).
- Damiano, C. R., Mazefsky, C. A., White, S. W. & Dichter, G. S. Future directions for research in autism spectrum disorders. *J. Clin. Child Adolesc. Psychol.* **43**, 828–843 (2014).
- Hyde, K. L., Samson, F., Evans, A. C. & Mottron, L. Neuroanatomical differences in brain areas implicated in perceptual and other core features of autism revealed by cortical thickness analysis and voxel-based morphometry. *Hum. Brain Mapp.* **31**, 556–566 (2010).
- Wolters, T. et al. From pattern classification to stratification: towards conceptualizing the heterogeneity of autism spectrum disorder. *Neurosci. Biobehav. Rev.* **104**, 240–254 (2019).
- Betancur, C. Etiological heterogeneity in autism spectrum disorders: More than 100 genetic and genomic disorders and still counting. *Brain Res.* **1380**, 42–77 (2011).
- Abrahams, B. S. & Geschwind, D. H. Advances in autism genetics: on the threshold of a new neurobiology. *Nat. Rev. Genet.* **9**, 341–355 (2008).
- Marquand, A. F., Wolters, T., Mennes, M., Buitelaar, J. & Beckmann, C. F. Beyond lumping and splitting: a review of computational approaches for stratifying psychiatric disorders. *Biol. Psychiatry Cogn. Neurosci. Neuroimaging* **1**, 433–447 (2016).
- Ecker, C. & Murphy, D. Neuroimaging in autism—from basic science to translational research. *Nat. Rev. Neurol.* **10**, 82–91 (2014).
- Geschwind, D. H. & Levitt, P. Autism spectrum disorders: developmental disconnection syndromes. *Curr. Opin. Neurobiol.* **17**, 103–111 (2007).
- Marshall, C. R. et al. Structural variation of chromosomes in autism spectrum disorder. *J. Hum. Genet.* **82**, 477–488 (2008).
- Croen, L. A., Grether, J. K. & Selvin, S. Descriptive epidemiology of autism in a California population: who is at risk? *J. Autism Dev. Disord.* **32**, 217–224 (2002).
- Ronald, A. et al. Genetic heterogeneity between the three components of the autism spectrum: a twin study. *J. Am. Acad. Child Adolesc. Psychiatry* **45**, 691–699 (2006).
- Mak-Fan, K. M., Taylor, M. J., Roberts, W. & Lerch, J. P. Measures of cortical grey matter structure and development in children with autism spectrum disorder. *J. Autism Dev. Disord.* **42**, 419–427 (2012).
- Hardan, A. Y., Muddasani, S., Vemulapalli, M., Keshavan, M. S. & Minshew, N. J. An MRI study of increased cortical thickness in autism. *Am. J. Psychiatry* **163**, 1290–1292 (2006).
- Hadjikhani, N., Joseph, R. M., Snyder, J. & Tager-Flusberg, H. Anatomical differences in the mirror neuron system and social cognition network in autism. *Cereb. Cortex* **16**, 1276–1282 (2006).
- Rødgaard, E. M., Jensen, K., Vergnes, J. N., Soulières, I. & Mottron, L. Temporal changes in effect sizes of studies comparing individuals with and without autism: a meta-analysis. *JAMA Psychiatry* **76**, 1124–1132 (2019).
- Mottron, L. & Bzdok, D. Autism spectrum heterogeneity: fact or artifact? *Mol. Psychiatry*. <https://doi.org/10.1038/s41380-020-0748-y> (2020).
- Lombardo, M. V., Lai, M. C. & Baron-Cohen, S. Big data approaches to decomposing heterogeneity across the autism spectrum. *Mol. Psychiatry*. <https://doi.org/10.1038/s41380-018-0321-0> (2019).
- Amaral, D. G., Schumann, C. M. & Nordahl, C. W. Neuroanatomy of autism. *Trends Neurosci.* **31**, 137–145 (2008).
- Hong, S.-J. et al. Towards neurosubtypes in autism. *Biol. Psychiatry*. <https://doi.org/10.1016/j.biopsych.2020.03.022> (2020).
- Munson, J. et al. Evidence for latent classes of IQ in young children with autism spectrum disorder. *Am. J. Ment. Retard.* **113**, 439–452 (2008).
- Hrdlicka, M. et al. Subtypes of autism by cluster analysis based on structural MRI data. *Eur. Child Adolesc. Psychiatry* **14**, 138–144 (2005).
- Hong, S.-J. et al. Multidimensional neuroanatomical subtyping of autism spectrum disorder. *Cereb. Cortex* **28**, 3578–3588 (2018).
- Kernbach, J. M. et al. Shared endo-phenotypes of default mode dysfunction in attention deficit/hyperactivity disorder and autism spectrum disorder. *Transl. Psychiatry* **8**, 133 (2018).
- Easson, A. K., Fatima, Z. & McIntosh, A. R. Functional connectivity-based subtypes of individuals with and without autism spectrum disorder. *Netw. Neurosci.* **3**, 344–362 (2018).
- Tang, S. et al. Reconciling dimensional and categorical models of autism heterogeneity: a brain connectomics & behavioral study. *Biol. Psychiatry*. <https://doi.org/10.1016/j.biopsych.2019.11.009> (2019).
- Lord, C., Bishop, S. & Anderson, D. Developmental trajectories as autism phenotypes. *Am. J. Med. Genet. Part C Semin. Med. Genet.* **169**, 198–208 (2015).
- Munson, J., Faja, S., Meltzoff, A., Abbott, R. & Dawson, G. Neurocognitive predictors of social and communicative developmental trajectories in

- preschoolers with autism spectrum disorders. *J. Int. Neuropsychol. Soc.* **14**, 956–966 (2008).
30. Bitsika, V., Sharpley, C. F. & Orapeleng, S. An exploratory analysis of the use of cognitive, adaptive and behavioural indices for cluster analysis of ASD subgroups. *J. Intellect. Disabil. Res.* **52**, 973–985 (2008).
  31. Hu, V. W. & Steinberg, M. E. Novel clustering of items from the autism diagnostic interview-revised to define phenotypes within autism spectrum disorders. *Autism Res.* **2**, 67–77 (2009).
  32. Fountain, C., Winter, A. S. & Bearman, P. S. Six developmental trajectories characterize children with autism. *Pediatrics* **129**, e1112–e1120 (2012).
  33. Georgiades, S. et al. Investigating phenotypic heterogeneity in children with autism spectrum disorder: a factor mixture modeling approach. *J. Child Psychol. Psychiatry* **54**, 206–215 (2013).
  34. Rapin, I., Dunn, M. A., Allen, D. A., Stevens, M. C. & Fein, D. Subtypes of language disorders in school-age children with autism. *Dev. Neuropsychol.* **34**, 66–84 (2009).
  35. Sacco, R. et al. Cluster analysis of autistic patients based on principal pathogenetic components. *Autism Res.* **5**, 137–147 (2012).
  36. Lane, A. E., Young, R. L., Baker, A. E. Z. & Angley, M. T. Sensory processing subtypes in autism: association with adaptive behavior. *J. Autism Dev. Disord.* **40**, 112–122 (2010).
  37. Cholemkery, H., Medda, J., Lempp, T. & Freitag, C. M. Classifying autism spectrum disorders by ADI-R: subtypes or severity gradient? *J. Autism Dev. Disord.* **46**, 2327–2339 (2016).
  38. Lombardo, M. V. et al. Unsupervised data-driven stratification of mentalizing heterogeneity in autism. *Sci. Rep.* **6**, 1–15 (2016).
  39. Bethlehem, R. A. I., Seidlitz, J., Romero-Garcia, R. & Lombardo, M. V. A normative modelling approach reveals age-atypical cortical thickness in a subgroup of males with autism spectrum disorder. *Commun. Biol.* **3**, 486 (2020).
  40. Zabihi, M. et al. Dissecting the heterogeneous cortical anatomy of autism spectrum disorder using normative models. *Biol. Psychiatry Cogn. Neurosci. Neuroimaging* **4**, 567–578 (2019).
  41. Charman, T. et al. The EU-AIMS Longitudinal European Autism Project (LEAP): clinical characterisation. *Mol. Autism* **8**, 27 (2017).
  42. van Rooij, D. et al. Cortical and subcortical brain morphometry differences between patients with autism spectrum disorder and healthy individuals across the lifespan: results from the ENIGMA ASD Working Group. *Am. J. Psychiatry* **175**, 359–369 (2017).
  43. Hazlett, H. C. et al. Early brain overgrowth in autism associated with an increase in cortical surface area before age 2 years. *Arch. Gen. Psychiatry* **68**, 467–476 (2011).
  44. Wallace, G. L., Dankner, N., Kenworthy, L., Giedd, J. N. & Martin, A. Age-related temporal and parietal cortical thinning in autism spectrum disorders. *Brain* **133**, 3745–3754 (2010).
  45. Scheel, C. et al. Imaging derived cortical thickness reduction in high-functioning autism: key regions and temporal slope. *Neuroimage* **58**, 391–400 (2011).
  46. Haar, S., Berman, S., Behrmann, M. & Dinstein, I. Anatomical abnormalities in autism? *Cereb. Cortex* **26**, 1440–1452 (2016).
  47. Khundrakpam, B. S., Lewis, J. D., Kostopoulos, P., Carbonell, F. & Evans, A. C. Cortical thickness abnormalities in autism spectrum disorders through late childhood, adolescence, and adulthood: a large-scale MRI study. *Cereb. Cortex* **27**, 1721–1731 (2017).
  48. Eickhoff, S. B., Thirion, B., Varoquaux, G. & Bzdok, D. Connectivity-based parcellation: critique and implications. *Hum. Brain Mapp.* **36**, 4771–4792 (2015).
  49. Bzdok, D. et al. Formal models of the network co-occurrence underlying mental operations. *PLoS Comput. Biol.* **12**, e1004994 (2016).
  50. Thirion, B., Varoquaux, G., Dohmatob, E. & Poline, J.-B. Which fMRI clustering gives good brain parcellations? *Front. Neurosci.* **8**, 167 (2014).
  51. Fischl, B. FreeSurfer. *Neuroimage* **62**, 774–781 (2012).
  52. Ng, A. Y., Jordan, M. I. & Weiss, Y. On spectral clustering: analysis and an algorithm. In *Advances in neural information processing systems* (2002).
  53. Von Luxburg, U. A tutorial on spectral clustering. *Stat. Comput.* **17**, 395–416 (2007).
  54. Dinga, R. et al. Evaluating the evidence for biotypes of depression: methodological replication and extension of Drysdale et al. *Neuroimage Clin.* **22**, 101796 (2017).
  55. Rutter, M., LeCouteur, A. & Lord, C. *Autism Diagnostic Interview - Revised (ADI-R)* (Western Psychological Services, 2015).
  56. Lord, C. et al. The Autism Diagnostic Observation Schedule-Generic: a standard measure of social and communication deficits associated with the spectrum of autism. *J. Autism Dev. Disord.* **30**, 205–223 (2000).
  57. Kraha, A., Turner, H., Nimon, K., Zientek, L. R. & Henson, R. K. Tools to support interpreting multiple regression in the face of multicollinearity. *Front. Psychol.* **3**, 44 (2012).
  58. Haufe, S. et al. On the interpretation of weight vectors of linear models in multivariate neuroimaging. *Neuroimage* **87**, 96–110 (2014).
  59. Marquand, A. F., Rezek, I., Buitelaar, J. & Beckmann, C. F. Understanding heterogeneity in clinical cohorts using normative models: beyond case-control studies. *Biol. Psychiatry* **80**, 552–561 (2016).
  60. Constantino, J. N. & Gruber, C. P. *Social Responsiveness Scale: SRS-2* (Western Psychological Services Torrance, CA, 2012).
  61. Bodfish, J. W., Symons, F. J., Parker, D. E. & Lewis, M. H. Varieties of repetitive behavior in autism: comparisons to mental retardation. *J. Autism Dev. Disord.* **30**, 237–243 (2000).
  62. Dunn, W. *Sensory Profile* (Psychological Corporation, 1999).
  63. Desikan, R. S. et al. An automated labeling system for subdividing the human cerebral cortex on MRI scans into gyral based regions of interest. *Neuroimage* **31**, 968–980 (2006).
  64. Wolfers, T. et al. Mapping the heterogeneous phenotype of schizophrenia and bipolar disorder using normative models. *JAMA Psychiatry* **75**, 1146–1155 (2018).
  65. Myers, S. M. et al. Insufficient evidence for “autism-specific” genes. *Am. J. Hum. Genet.* **106**, 587–595 (2020).
  66. Narr, K. L. et al. Widespread cortical thinning is a robust anatomical marker for attention-deficit/hyperactivity disorder. *J. Am. Acad. Child Adolesc. Psychiatry* **48**, 1014–1022 (2009).
  67. Makris, N. et al. Cortical thinning of the attention and executive function networks in adults with attention-deficit/hyperactivity disorder. *Cereb. Cortex* **17**, 1364–1375 (2007).
  68. Noirhomme, Q. et al. Biased binomial assessment of cross-validated estimation of classification accuracies illustrated in diagnosis predictions. *Neuroimage Clin.* **4**, 687–694 (2014).