



HAL
open science

New methods to decrypt emerging macropinosome functions during the host–pathogen crosstalk

Yuen-Yan Chang, Jost Enninga, Virginie Stévenin

► **To cite this version:**

Yuen-Yan Chang, Jost Enninga, Virginie Stévenin. New methods to decrypt emerging macropinosome functions during the host–pathogen crosstalk. *Cellular Microbiology*, 2021, 10.1111/cmi.13342 .
pasteur-03263215

HAL Id: pasteur-03263215

<https://pasteur.hal.science/pasteur-03263215>

Submitted on 17 Jun 2021

HAL is a multi-disciplinary open access archive for the deposit and dissemination of scientific research documents, whether they are published or not. The documents may come from teaching and research institutions in France or abroad, or from public or private research centers.

L'archive ouverte pluridisciplinaire **HAL**, est destinée au dépôt et à la diffusion de documents scientifiques de niveau recherche, publiés ou non, émanant des établissements d'enseignement et de recherche français ou étrangers, des laboratoires publics ou privés.



Distributed under a Creative Commons Attribution 4.0 International License

MICROREVIEW

WILEY

New methods to decrypt emerging macropinosome functions during the host–pathogen crosstalk

Yuen-Yan Chang^{1,2}  | Jost Enninga¹  | Virginie Stévenin^{1,3,4} 

¹Institut Pasteur, Dynamics of Host-Pathogen Interactions Unit and CNRS UMR 3691, Paris, France

²Division of Molecular and Cellular Biology, National Institute of Child Health and Human Development, NIH, Bethesda, Maryland

³Department of Cell and Chemical Biology, Leiden University Medical Center, Leiden, Netherlands

⁴Université Paris Diderot, Ecole doctorale BioSPC, Paris, France

Correspondence

Yuen-Yan Chang and Virginie Stévenin, Institut Pasteur, Dynamics of Host-Pathogen Interactions Unit and CNRS UMR 3691, 25 rue du Dr. Roux, 75724 Paris, France.
Email: cchangyy@connect.hku.hk (Y.-Y. C.) and virginie.stevenin@ens-cachan.fr (V. S.)

Funding information

Agence Nationale de la Recherche, Grant/Award Numbers: AutoHostPath, HBPSensing, StopBugEntry; H2020: European Research Council, Grant/Award Number: CoG EndoSubvert; Fondation pour la Recherche Médicale, Grant/Award Numbers: FDT20170436843, SPF20160936275

Abstract

Large volumes of liquid and other materials from the extracellular environment are internalised by eukaryotic cells via an endocytic process called macropinocytosis. It is now recognised that this fundamental and evolutionarily conserved pathway is hijacked by numerous intracellular pathogens as an entry portal to the host cell interior. Yet, an increasing number of additional cellular functions of macropinosomes in pathologic processes have been reported beyond this role for fluid internalisation. It emerges that the identity of macropinosomes can vary hugely and change rapidly during their lifetime. A deeper understanding of this important multi-faceted compartment is based on novel methods for their investigation. These methods are either imaging-based for the tracking of macropinosome dynamics, or they provide the means to extract macropinosomes at high purity for comprehensive proteomic analyses. Here, we portray these new approaches for the investigation of macropinosomes. We document how these method developments have provided insights for a new understanding of the intracellular lifestyle of the bacterial pathogens *Shigella* and *Salmonella*. We suggest that a systematic complete characterisation of macropinosome subversion with these approaches during other infection processes and pathologies will be highly beneficial for our understanding of the underlying cellular and molecular processes.

1 | INTRODUCTION

1.1 | Macropinocytosis – evolutionarily conserved and functionally multi-faceted

In eukaryotic cells, elements of the extracellular environment are constantly internalised through a variety of endocytic processes. Among them, macropinocytosis, named from Greek 'pino' meaning 'to drink', allows the cells to take up a big amount of extracellular fluids and soluble macromolecules. First described by Warren Lewis in 1931 (Lewis, 1931), this pathway is initiated through the formation of dynamic protrusions of actin-rich plasma membrane folds called

ruffles. When the ruffles close at their distal margins, they enclose the extracellular content within membrane-bound organelles called macropinosomes (Swanson & Watts, 1995). These compartments present a heterogeneous size range and are on average significantly larger (>200 nm) than other endocytic compartments such as clathrin-coated vesicles, caveolae and other clathrin-independent carriers (Doherty & McMahon, 2009). The nascent macropinosomes mature and follow different paths for their recycling or degradation. These processes are tightly controlled by a plethora of molecular regulators, including growth factor receptors, kinases, small GTPases and phospholipids (Kerr & Teasdale, 2009). Substantially different and often partly redundant pathways govern the formation and maturation of

This is an open access article under the terms of the Creative Commons Attribution-NonCommercial License, which permits use, distribution and reproduction in any medium, provided the original work is properly cited and is not used for commercial purposes.

© 2021 The Authors. *Cellular Microbiology* published by John Wiley & Sons Ltd.

macropinosomes depending on the cell type, stimulation and macropinosome function (reviewed in Lin et al., 2020; Buckley & King, 2017; Bloomfield & Kay, 2016; Amyere et al., 2001).

From an evolutionary point of view, macropinocytosis is thought to have first fulfilled a nutritive function, as it takes place in amoeba. Later in time, macropinocytosis is related to specialised roles in vertebrates. For example, it is crucial in immune cells for the sampling of environmental material processed for antigen presentation (Lanzavecchia, 1996; Norbury, 2006) and clearance of apoptotic cells (Henson et al., 2001; Krysko et al., 2006), and it eases dendritic cell migration (Moreau et al., 2019; Stow et al., 2020). In neurons, macropinocytosis allows bulk endocytosis during intense synaptic activity and enables modulation of synapse signalling by regulating the amounts of cell surface receptors (Clayton & Cousin, 2009). In addition to their physiological roles, macropinosomes have been associated with many pathologic processes, ranging from neurodegenerative disease and tumour growth to infections. Our knowledge on the overarching paradigms of this puzzling diversity has remained limited, underpinning the need for tools to scrutinise this diversity at the molecular level.

1.2 | Naisance, maturation and recycling of a macropinosome

Macropinocytosis starts with actin-driven membrane ruffles (Quinn et al., 2020). These membrane protrusions can take the cup-shaped form of circular dorsal ruffles in a large number of cell types such as fibroblasts, epithelial cells, macrophages or glial cells (Bernitt et al., 2015). Otherwise, flat sheet-like projections called lamellipodia can be formed at protrusive regions of motile cells (Swanson, 2008). These processes either occur constitutively – as observed in dendritic cells – or they are induced by extracellular signals such as the binding of growth factors (e.g. epidermal growth factor [EGF]) to their specific receptor tyrosine kinases (RTK) (as detailed in Box 1). Alternatively, macropinocytosis is triggered by signals generated inside the cell that activate the signalling cascade downstream of RTK activation. This is the case for the oncogenic v-Src and K-Ras (Hobbs & Der, 2020; Veithen et al., 1996). Similarly, a variety of particles including apoptotic bodies, necrotic cells, bacteria and viruses bypass RTK activation and induce ruffle formations independent of growth factors to trigger their internalisation (Hoffmann et al., 2001; Mercer & Helenius, 2009). Following the induction signal, actin polymerisation is initiated by the activated small GTPases acting in concert with the phosphatidylinositol phosphates (PIPs) on the plasma membrane (reviewed by Buckley & King, 2017). Together, they activate actin nucleation-promoting factors allowing the formation and growth of new actin branches. As the actin microfilaments grow, the plasma membrane locally extends up to dozen micrometre-long protruding ruffles. The need of additional membrane for the expanding ruffles is fuelled to varying degrees by different intracellular organelles (Huynh et al., 2007). The membrane protrusions usually recede spontaneously. However, they sometimes curve at their

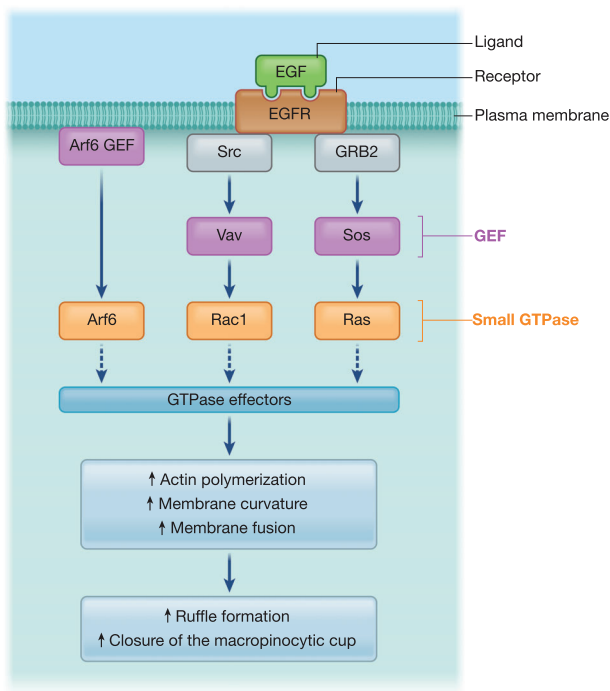
Take Away

- Macropinocytosis serves as an entry door to numerous intracellular pathogens
- Infection-Associated Macropinosomes are formed besides the pathogen entry vacuole
- Novel method developments allow in-depth analysis of IAMs molecular identity
- IAMs are subverted to establish pathogenic replicative niches
- In-depth investigations of the IAM-pathogen interplay are promising research tracks

base into open crater-like cups, while the protrusions apex can either fuse together (circular dorsal ruffle) or fold back and fuse with the flat cell-surface membrane (lamellipodia). Following these fusion events, the crater-like cups (called macropinocytic cups) turn into intracellular organelles called macropinosomes and encapsulate a large volume of extracellular fluid into their lumen. Some molecular players such as the actin-associated motor myosin (Buss et al., 1998; Jiang et al., 2010), and the CtBP1/BARS-dependent fission machinery (Liberali et al., 2008) have been reported to be involved in macropinosome fission.

After closure of the macropinocytic cup and fission from the plasma membrane, the newly formed macropinosomes obtain a specific identity. The small GTPase Rab5 is recruited to the closing macropinosomes and recruits the PI-3-kinase Vps34 that converts PI to PI(3)P (Bohdanowicz & Grinstein, 2013; Porat-Shliom et al., 2008). This shift in the macropinosome lipid composition allows the organelle maturation through the temporally dependent recruitment of a suite of membrane tethering and coat proteins (Feliciano et al., 2011; Schnatwinkel et al., 2004). In addition, these early macropinosomes strip off their dense actin coat and escape from the cortical actin meshwork (Schink et al., 2017). They are further partly deflated by the extrusion of ions and the osmotically coupled release of H₂O (Freeman et al., 2020). Concomitantly, BAR-domain containing sorting nexin (SNX) proteins are recruited to discrete subdomains of the membrane (Kerr et al., 2006). This leads to the formation of extensive tubules for membrane removal. After scission, these tubulations communicate via the retromer protein complex with the Golgi network allowing the recycling of key surface proteins (Seaman, 2012).

The remaining macropinosomes presenting early endosome markers mature and participate in homo- and heterotypic fusions (Kerr & Teasdale, 2009). While some macropinosomes undergo acidification, acquire late endosome markers such as Rab7 and Rab9, migrate to the centre of the cells and eventually fuse with the lysosome (Racoosin & Swanson, 1993), others recycle back to the plasma membrane via a fast-recycling process involving Rab4 and Rab35 or through a slow recycling process involving Rab8 and Rab11.



BOX 1 Canonical macropinocytosis induction: Epidermal growth factor. Binding of EGF to EGFR stimulates the auto-phosphorylation of receptor dimers. Phosphorylated EGFRs recruit the kinase Src and the adaptor proteins GRB2 that assemble as a complex of proteins near the plasma membrane. The organized movements of membranes and the actin cytoskeleton are subsequently coordinated by small GTPases of the Ras superfamily (reviewed by Swanson, 2008). While Src phosphorylates the GEF Vav that activates the Rho GTPases Rac1, GRB2 stimulates the activation of the GEF Sos which activates the GTPase Ras. Besides, the ARF GTPase Arf6 is activated by its GEF (Williamson & Donaldson, 2019). The GTP-bound GTPase activates various effector enzymes. In turn, by modifying membrane lipid composition and activating proteins regulating the actin cytoskeleton dynamic, these GTPase effectors increase actin-filament turnover, actin polymerization, membrane curvature and eventually membrane fusion and macropinocytic cup closure

2 | MACROPINOCYTOSIS AND INFECTION

2.1 | Viral induction of macropinocytosis

As viruses need to enter host cells for their replication and propagation, macropinocytosis has been known to be subverted by viruses for a long time. When infecting non-phagocytic cells, viruses must mimic a physiological extracellular stimulus to induce macropinocytosis. Extracellular viral particles interact with receptors on the cell surface for the triggering of membrane ruffling. Usually, this is followed by the formation of macropinosomes and virus internalisation. The virus or their capsids can subsequently penetrate into the cytosol breaching the macropinosome membrane. Even though many viruses hijack the macropinocytosis process, the subverted molecular mechanisms differ profoundly among them (reviewed by Mercer & Helenius, 2009, 2012).

Vaccinia virus, influenza A virus or reovirus induce macropinocytosis by activating RTK (Aravamudhan et al., 2020). This activation is triggered either through direct binding or via glycans acting as bridging molecules. Alternatively, some adenoviruses, echovirus and herpes virus bind to integrin receptors to induce macropinocytosis through a molecular mechanism similar to RTK-induced macropinocytosis. Finally, apoptotic mimicry is a typical strategy of enveloped viruses to be taken up into macrophages (reviewed by Amara & Mercer, 2015). Here, viruses such as vaccinia virus, dengue virus, Ebola virus and pseudotyped lentiviruses expose the apoptosis marker phosphatidylserine (PS) on their surface to mimic apoptotic bodies. As they bind to PS receptors on the surface of macrophages, they elicit a macropinocytic response similar to necroptosis.

2.2 | Bacterial induction of macropinocytosis

2.2.1 | Macropinocytosis in non-phagocytic cells

Intracellular bacteria have developed many mechanisms for their internalisation, one of the foremost being the hijacking of macropinocytosis. Before entering their host, many bacteria employ different secretion systems (SS) as molecular weapons to communicate from the extracellular environment with the host cytosol (Wagner et al., 2018). The injected effectors induce host cell ruffling and trigger macropinocytosis either within phagocytic or non-phagocytic cells (see Table 1).

The Gram-negative bacterium *Salmonella* is among the first reported bacterium to induce macropinosome formation during its internalisation within epithelial cells (Garcia-del-Portillo & Finlay, 1994). *Salmonella* injects a set of effectors within its host cytosol using a type 3 SS (T3SS) leading to membrane ruffling and bacterial entry (reviewed by LaRock et al., 2015). Briefly, the effectors SopE and SopE2 mimic Rho GEFs and activate the Rho GTPase Cdc42 and Rac1 triggering the recruitment of actin regulatory complexes to the plasma membrane. In addition, SipA and SipC bind directly to actin promoting microfilament nucleation, polymerisation and bundling. Additionally, SipC induces the exocytosis of vesicles to increase the source of membrane needed for the ruffle formation by interacting directly with the exocyst complex (Nichols & Casanova, 2010). SopB modulates the membrane PI composition and weakens the interactions between the plasma membrane and the actin cortex, promoting the ruffle extension (Piscatelli et al., 2016). In addition, the local change in membrane PI composition leads to the recruitment of proteins involved in actin-modulating pathways and membrane ruffling (Brooks et al., 2017). Following bacterial entry, SptP inactivates both Rac1 and Cdc42 via its GAP activity promoting the restoration of the cytoskeleton architecture (Fu & Galán, 1999).

The triggering of macropinocytosis in non-phagocytic cells by the Gram-negative bacterium *Shigella* is highly similar to *Salmonella*. Using its T3SS, *Shigella* injects about 25 effectors within the host cell (reviewed by Pizarro-Cerdá et al., 2016): IpaA and IpgB2 control the actin dynamics at the bacterial contact sites through direct

TABLE 1 Bacterial-induced macropinocytosis: effectors, enzymatic activity and mechanistic outcomes

Type of Induction	Bacteria	Effector	Enzymatic Activity	Functional Implication	References
<i>spi1</i> -encoded T3SS	<i>Salmonella</i>	SopE/E2	Mimic Rho GEFs and activate Cdc42 and Rac1	Activation of Rac1 and Cdc42 downstream cascades for macropinocytosis induction	Friebel et al. (2001)
		SipA/SipC	Bind directly to actin	Actin filament nucleation, polymerisation and bundling	Zhou et al. (1999) Hayward and Koronakis (1999)
		SipC	Interacts directly with Exo70, a component of the exocyst complex	Exocytosis of vesicles increases the available membrane for ruffle formation	Nichols and Casanova (2010)
		SopB	Dephosphorylates PI(3,4,5)P ₃ into PI(3,4)P ₂ , and PI(3,4)P ₂ into PI(3)P leading to local depletion of PI(4,5)P ₂ from the plasma membrane	Weakening of the interactions between the plasma membrane and the actin cortex promoting ruffle extension Recruitment of proteins involved in actin-modulation and membrane ruffling	Piscatelli et al. (2016) Mason et al. (2007) Terebiznik et al. (2002), Patel and Galán (2006)
		SptP	Inactivates Rac1 and Cdc42 via its GAP activity	Restoration of the cytoskeleton architecture	Fu and Galán (1999)
T3SS	<i>Shigella</i>	IpaA	Interacts with vinculin to promote capping of actin barbed ends Targets beta1-integrin- >loss of actin fiber	Altered actin polymerisation dynamics	Ramarao et al. (2007) DeMali et al. (2006)
		IpaC	Recruits and activates Src	Activation of the downstream Src cascade of macropinocytosis induction	Mounier et al. (2009)
		IpgB1	Activates Rac1 and Cdc42	Activation of the downstream Rac1 and Cdc42 cascades of macropinocytosis induction (<i>similar to SopE/E2</i>)	Ohya et al. (2005)
		IpgB2	Binds to mDia1 and ROCK	Actin nucleation and stress fibre formation	Alto et al. (2006)
		IpgD	Dephosphorylates PI(4,5)P ₂ into PI(5)P	Weakening of the interactions between the plasma membrane and the actin cortex promoting the ruffle extension (<i>similar to SopB</i>)	Niebuhr et al. (2002)
T3SS	<i>Chlamydia</i>	^a TARP	Binds to actin Activates Rac1	Actin nucleation and polymerisation No direct proof of role during macropinocytosis	Lane et al. (2008) Jewett et al. (2006)
		^a CT116	Induces Rac1 glycosylation	Actin reorganisation No direct proof of role during macropinocytosis	Thalmann et al. (2010)
		^a TepP	Activates PI3K	No direct proof of role during macropinocytosis	Carpenter et al. (2017)

TABLE 1 (Continued)

Type of Induction	Bacteria	Effector	Enzymatic Activity	Functional Implication	References
^a Potentially T3SS or T6SS-mediated	<i>Edwardsiella piscicida</i>	^a Potentially T3/6SS effectors-mediated	Unknown	Macropinocytosis-like internalisation in non-phagocytic cells	Hu et al. (2019)
^a Potentially receptor-mediated	<i>Escherichia coli</i> K1	N/A	Activates Cdc42, Rac1, RhoA	Internalisation via macropinocytosis in brain microvascular endothelial cells	Loh et al. (2017)
Unknown	<i>Mycobacterium</i>	Unknown	Unknown	Internalisation via macropinocytosis in pneumocytes and B cells	García-Pérez et al. (2003, 2012)
Unknown	<i>Neisseria gonorrhoeae</i>	Unknown	Unknown	Internalisation by macropinocytosis in primary human urethral epithelial cells	Zenni et al. (2000)
Unknown	<i>Haemophilus influenzae</i>	Unknown	Unknown	Internalisation by macropinocytosis in primary human bronchial epithelial cells	Ketterer et al. (1999)
<i>icm/dot</i> encoded T4SS	<i>Legionella</i>	Unknown	Unknown	Internalisation by bacteria-induced macropinocytosis in macrophages	Watarai et al. (2001)
<i>virB</i> encoded T4SS	<i>Brucella</i>	Unknown	Unknown	Generalised ruffling Internalisation within macropinosome	Watarai et al. (2002)

^aSuggested molecular players.

binding with actin-interacting proteins. IpgB1 and IpaC recruit and activate Src, Rac1 and Cdc42, stimulating the downstream macropinocytosis induction cascade. IpgD, similarly to SopB, modulates the PI membrane composition and weakens the connection between cortical actin and the plasma membrane to facilitate ruffling.

Looking at other bacterial pathogens, it was reported that the intracellular obligate bacterium *Chlamydia* uses macropinocytosis induction to facilitate its capture and internalisation within non-phagocytic cells (Ford et al., 2018). While it is known that *Chlamydia* injects T3SS effectors during its entry process, their contributions to *Chlamydia* induction of macropinocytosis are not precisely understood. Likewise, very recently, Hu and colleagues proposed that the fish pathogen *Edwardsiella piscicida* utilises the host macropinocytosis pathway to enter into non-phagocytic cells (Hu et al., 2019). As *E. piscicida* uses a T3SS and a type 6 SS (T6SS) to inject effectors into target cells, a future direction is to examine their roles in bacterial entry. In contrast, *Escherichia coli* K1 was proposed to enter endothelial cells through receptor-mediated induction of macropinocytosis (Loh et al., 2017). Finally, older studies have shown the capacity of *Mycobacterium* (García-Pérez et al., 2003, 2012), *Neisseria gonorrhoeae* (Zenni et al., 2000) and *Hemophilus influenzae* (Ketterer et al., 1999) to enter non-phagocytic cells through macropinocytosis, but the underlying mechanisms remain mostly unexplored. These older studies combined several microscopic techniques and inhibitor treatments to demonstrate

the entry of bacteria into macropinosomes. Yet, these investigations have not resulted in a detailed follow-up work, and the techniques used are now considered suboptimal in terms of temporal and spatial resolution. Opportunely, a mechanistic investigation of the relevance of these processes is now achievable taking advantage of the recent methodology developments.

2.2.2 | Macropinocytosis in phagocytic cells

Macropinocytosis induction in phagocytic cells has been less investigated, partially due to the technical difficulties distinguishing between bacteria- and host-driven macropinocytosis induction. *Legionella* is a Gram-negative bacterium that mainly invades phagocytic cells such as amoeba and macrophages. Using a Dot/Icm type 4 SS (T4SS, encoded by the dot/icm genes), *Legionella* translocates more than 330 bacterial effectors into host cells allowing the formation of a permissive macrophage vacuole. It was reported that the T4SS promotes *Legionella* entry into phagocytic cells via a macropinocytic uptake pathway (Watarai et al., 2001), but the molecular mechanism of *Legionella* macropinocytosis induction remains to be clarified. Less canonically, the Gram-negative bacterium *Brucella* displays an original mechanism of macropinocytosis induction mediated by its virB-encoded T4SS. After initial contact

with macrophages, *Brucella* swims on the cell surface for several minutes which results in generalised plasma membrane ruffling, after which the bacteria are enclosed within macropinosomes (Watarai et al., 2002). These observations relied on the use of fixed and time-lapse microscopic techniques that were challenging at the time of the study due to analytical limitations. Nowadays, such investigations could be performed at a larger scale with high-throughput time-lapse microscopy combined with automatic image analyses to consolidate the proposed model and decipher the overall contribution of macropinocytosis to *Brucella* entry.

3 | METHODS FOR MACROPINOCYTOSIS ANALYSIS

Classically, subversion of macropinocytosis by intracellular pathogens was perceived as purely entry-related. Yet, while methodological innovations for macropinosome studies untangled the physical and molecular changing identities of this compartment, it has emerged that macropinosomes also play non-entry-related roles at the centre of the host–pathogen crosstalk. This paradigm shift was only possible thanks to the use of an increasingly sophisticated toolbox combining candidate-based and comprehensive unbiased approach.

3.1 | Candidate-based approaches to trace macropinosomes

For candidate-based approaches, specific proteins known to be present on macropinosomes are labelled, for example, by genetically encoded fluorescent probes to monitor them by standard fluorescence microscopy (Buckley et al., 2016; Morishita et al., 2019). Commonly employed macropinosome markers include regulatory proteins, such as GTPases Rab5 and Rab11 or certain lipids, such as PI3P that is recognised by the FYVE domain (reviewed by Kühn et al., 2017). Besides, introduction of advanced microscopic techniques, such as lattice light sheet microscopy (LLSM), structured illumination microscopy (SIM) and correlative light electron microscopy (CLEM) have contributed to the broadening of knowledge on macropinosome dynamics and identity (Condon et al., 2018; Fredlund et al., 2018; Weiner et al., 2016). CLEM, coupled with fluorescent markers, such as labelled dextran or probes recognising PI3P, has been instrumental for investigating macropinosomes during *Salmonella* and *Shigella* invasion. Performing focused ion beam milling combined with scanning electron microscopy (FIB-SEM) revealed that the nascent bacteria-containing vacuoles (BCVs) and the surrounding macropinosomes are discrete compartments, which acquired strikingly different molecular identities (Fredlund et al., 2018; Weiner et al., 2016). For the sake of clarity, we named these latter compartments 'infection-associated macropinosomes' (IAMs). These studies also substantiated that *Salmonella* and *Shigella* engulfment within enterocytes is distinct from and does not rely on macropinocytosis. Consequently, this finding calls for revisiting the trigger entry paradigm and for

scrutinising the identities of the nascent compartments of other ruffle-inducing bacteria.

3.2 | Toward an unbiased understanding of macropinosomes

While candidate-based approaches illuminated IAMs as novel distinct pathogenic compartments, unbiased approaches such as proteomic analysis provides the means to address their whole molecular identity. Conventional cell fractionation of vesicular compartments is markedly dependent on the equilibrium states of the density separation, whereas IAMs, by nature, are very similar to other endosomal compartments (Walker et al., 2016). Due to the rapid maturation of macropinosomes and dynamics of host–pathogen interactions, methodologies were thus under-equipped to elucidate the molecular players on IAMs. These hurdles have been overcome by a novel method to purify IAMs inspired by a reported magnetic cell fractionation method (Chang et al., 2020; Steinhäuser et al., 2014; Stévenin et al., 2019). This magnetic purification utilises magnetic beads of moderate size (100 nm in diameter), which are readily engulfed within IAMs during *Salmonella* and *Shigella* invasion when administered to the extracellular medium (Figure 1). Infected cells are then lysed and the magnetic bead-containing IAMs are immobilised on a table-top magnet. The non-magnetic material is eluted, whereas the purified IAMs are recovered within the magnetic fraction. The isolated IAMs are of high purity and can be analysed by mass spectrometry without any additional purification procedure. This method thus minimises the contamination of other endosomal compartments and specifically isolates IAMs. The proteome of the magnetic and non-magnetic fractions extracted from both infected and non-infected samples can be comparatively analysed to determine protein candidates that are significantly enriched on the IAMs.

4 | EXPLOITING THE NEW METHODS – GOING BEYOND THE ENDOCYTOSIS–MACROPINOCYTOSIS LINK

The described method innovations have been crucial to discover the central role of IAMs on intracellular niche formation of two bacterial pathogens, *Salmonella* and *Shigella*. Combining CLEM and rapid time-lapse microscopy, *Shigella* was found to induce the clustering of IAM around its BCV at the moment of vacuolar rupture (Chang et al., 2020; Weiner et al., 2016) (Figure 2). By applying the above-mentioned magnetic purification, we mined the proteome of *Shigella* IAMs and uncovered the molecular players that mediate the BCV–IAM interaction. More specifically, statistical analysis of the large datasets identified enrichment of the components of the exocyst complex on the IAMs, a multi-subunit tethering complex that tethers opposing membranes for interaction (Chang et al., 2020). We further validated that the exocyst complex is manipulated by *Shigella* via the action of its T3SS effector IpgD to hijack Rab8 and Rab11 trafficking.

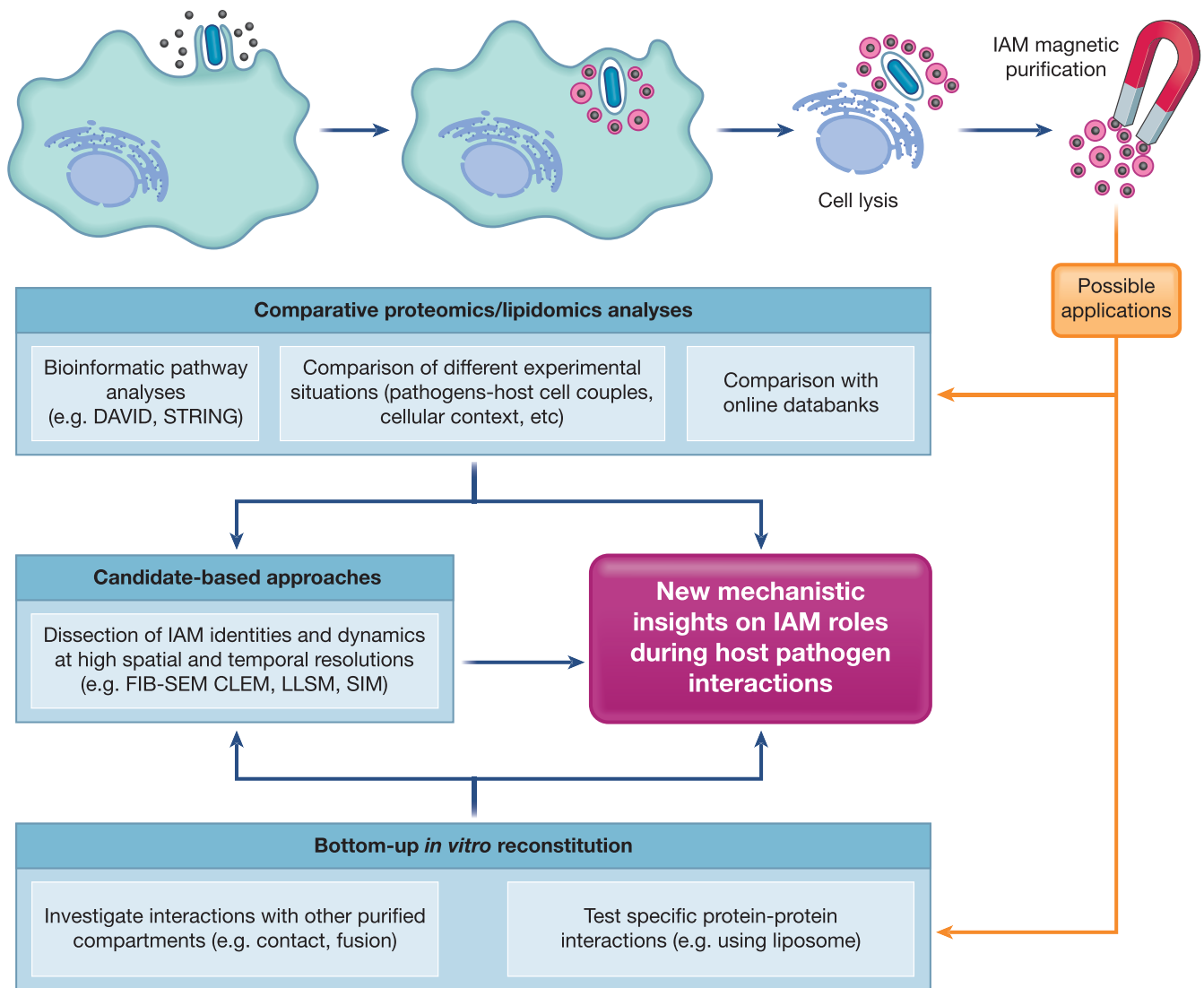


FIGURE 1 Schematic illustration of the purification of IAMs using a permanent magnet and some potential applications. Cells are incubated with the magnetic beads and the invasive bacterial pathogens. The infected cells are then lysed and IAMs enclosing the magnetic beads are isolated under a magnetic field. STRING: Search Tool for the Retrieval of Interacting Genes/Proteins, DAVID: Database for Annotation Visualization and Integrated Discovery, LLSM: Lattice Light Sheet Microscopy, SIM: Structured Illumination Microscopy, CLEM: Correlative Light Electron Microscopy, FIB-SEM Focused Ion Beam - Scanning Electron Microscopy

The exocyst-mediated IAM clustering thus enhances BCV-IAM contact that leads to translocation of vacuolar membrane remnants away from the bacteria and enables the naked bacteria to spread to neighbouring cells via actin-based motility (Figure 2). Although the host-pathogen interplay involved in membrane translocation is still under investigation, the *Shigella* IAM proteome implicates a sketch of the efficient vacuolar escape of this cytosolic-dwelling pathogen.

The nascent *Salmonella*-containing vacuole undergoes a dramatic resizing just after its formation. Rapid time-lapse microscopy indicated simultaneous *Salmonella* BCV expansion through IAM fusion and shrinkage through the formation of membrane tubules emanating from the vacuole. These antagonistic events are utilised by *Salmonella* to equilibrate its vacuolar niche settlement with BCV rupture leading to *Salmonella* cytosolic escape. Thus, fusions between nascent

Salmonella BCV and IAM at early *Salmonella* infection stage prevent vacuolar rupture and favour *Salmonella* vacuolar lifestyle (Stévenin et al., 2019). By exploring the *Salmonella* IAM proteomes, we found a substantial enrichment of the soluble *N*-ethylmaleimide-sensitive factor attachment receptor (SNARE) proteins, which are well-characterised proteins that are required for membrane fusion (Stévenin et al., 2019). More importantly, integrating the proteome of *Salmonella* BCV (Santos et al., 2015) in our analysis, the *Salmonella* IAMs proteome showed the cognate SNARE pair that is present on the *Salmonella* BCV (Stx4) and the surrounding IAMs (SNAP25). This confirmed SNAREs are subverted to mediate the fusion between the *Salmonella* BCV and the proximal IAMs for *Salmonella* BCV expansion and bacterial proliferation. This proteomic study of IAMs thus expands the list of functions of macropinosomes for vesicular compartment

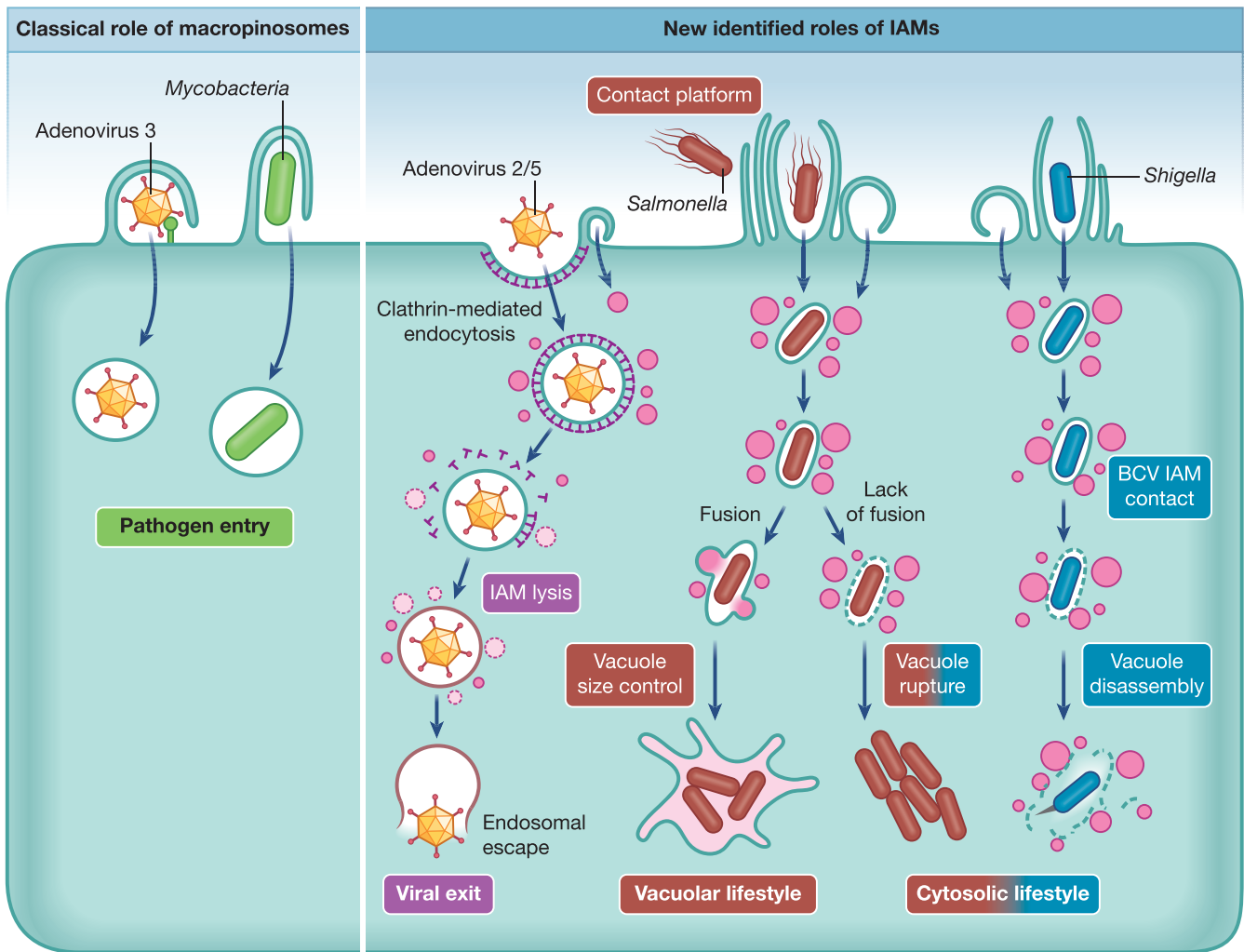


FIGURE 2 Schematic comparison of the classical and newly identified roles of macropinosomes during the host-pathogen crosstalk. While Adenovirus 3 and Mycobacteria (left panel) induce the formation and invade their host cells englobed within a macropinosome, Adenovirus 2/5, Salmonella and Shigella (right panel) trigger macropinocytosis but enter within a distinct endocytic compartment. Recently, the non-entry related, infection-associated-macropinosomes (IAMs, in magenta) have been found to contribute to the establishment of the pathogen replicative niches

size control during pathogen infection processes (Figure 2). Later on, Kehl et al. (2020) analysed the recruitment of trafficking-associated proteins on the *Salmonella* BCV-associated tubules at late time points of the infection (6–9 hr post infection). During this work, the authors showed also the enrichment of the SNAREs VAMP2, VAMP3 and VAMP8 that we found significantly enriched in the IAM proteome along these tubules. Besides, performing a trafficone-wide RNAi screen, they showed that siRNA depletion of many proteins significantly enriched on IAMs (e.g., SNAP23, Sec22b, Bet1, Rab35, among others) caused a defect in the establishment of the late *Salmonella* BCV tubular network. These results suggest a potential contribution of IAMs in the membrane composition of the late BCV and its associated tubules. Further integration of the results would thus be advantageous to understand the role of IAMs in the establishment of the late *Salmonella* tubular network.

Consistently, as pairwise comparative analysis of the proteomes of *Salmonella* and *Shigella* IAMs has the potential to reveal distinct

molecular factors that correlate with the different lifestyles of the two pathogens, it has opened new exciting tracks of currently ongoing research. The magnetic extraction of macropinosomes during pathogen infections, therefore, sheds light on the determining roles of IAMs in establishing the diverse intracellular niches of bacterial pathogens.

In addition to their intracellular roles, macropinosome formation may also be considered to be involved in extracellular processes. As bacteria-induced ruffles stand-out from the cellular surface, it is conceivable that they act as a trap favouring bacterial attachment instead of simply englobing the surrounding pathogens (Figure 2). This was observed during *Salmonella* near-surface swimming on the epithelial surface during which salmonellae bump into ruffles that were formed by previously internalised *Salmonella* (Misselwitz et al., 2012). Hence, macropinocytosis induction during *Salmonella* invasion facilitates the entry of additional bacteria in a cooperative manner. Similarly, cryo-electron tomography of *Chlamydia* infection revealed that bacterial

entry is facilitated by filopodial capture following a macropinocytosis-like pathway (Ford et al., 2018). These precocious steps of bacterial intracellular colonisation are particularly relevant for therapeutic targeting and should be further investigated at the molecular level.

Similar to bacterial pathogens, some viruses may require macropinocytosis for processes (e.g. efficient cell penetration) independent of host cell entry. For instance, despite its major internalisation route by clathrin-mediated endocytosis, binding of adenovirus 2/5 particles to cell-surface receptors concurrently induces macropinosome formation (Meier et al., 2002). Though the mechanism remains unclear, virus-dependent lysis of these macropinosomes contributes to the efficient viral exit to the cytosol and spreading of the infection (Figure 2). In addition, two coronaviruses, namely MHV and SARS, have been reported to induce continuous macropinocytosis at late infection stage, which implies a process not associated with viral entry. Inhibition of macropinocytosis resulted in lower extracellular but not intracellular viral titers, indicating that macropinocytosis possibly facilitates coronavirus infection through enhanced cell-to-cell spreading (Freeman et al., 2014). While viruses and bacteria profoundly differ by nature, these studies suggest that IAM hijacking could be another analogic feature reached via distinct evolution roads. The robust methodology to magnetically purify IAMs and extract their molecular compositions may thus encourage elucidation of IAM subversion by viruses.

5 | PERSPECTIVES

A lack of methodologies to identify the molecular factors involved in macropinocytic pathway has remained challenging until recently. Purification of macropinosomes during different infection processes in different cell types provides a powerful toolset for IAM investigations (Figure 1). Due to the biocompatibility of the magnetic beads, the magnetic purification method can not only be applied during pathogen invasion but is also readily adaptable to study the macropinocytic behaviours of different cellular contexts. Here, it is important to carefully examine the microenvironment (e.g. level of cell surface receptors, cell morphology, etc.) as it was reported to influence macropinocytic activity (Lee et al., 2019) and pathogen invasion (Snijder et al., 2009; Voznica et al., 2017). It will be interesting to mine and compare the proteomes or lipidomes of macropinosomes of various origins (e.g. cell types, physiologic or pathologic inductions, etc.) to expand our knowledge on the regulatory machinery of macropinosomes linked with their versatile biological functions. The purified macropinosomes may also be used for bottom-up *in vitro* studies on the interaction with other compartments.

Having obtained the molecular composition of macropinosomes, it is now possible to characterise the specific interactions of the identified factors to unravel the formation and maturation of macropinosomes that have been originally perceived as indistinguishable from other endosomal vesicles in high temporal and spatial resolution. One prominent progress is to combine super-resolution light microscopic techniques, such as stimulated emission depletion (STED)

microscopy and single-molecule localisation microscopy (SMLM) (Schermele et al., 2019) that may achieve sub-100 nm resolution, with electron microscopy in CLEM approaches. Besides, cryo-ET will continue to offer progress in improved sample preservation for investigating the IAM-compartment contact sites at near-atomic resolution. Apart from that, advancement in proximity-labelling techniques, particularly biotinylation conjugation, enables the study of the identified factors on IAMs with their interacting partners (Cho et al., 2020; Nguyen et al., 2020; Liu et al., 2020). In some cases, the protein of interest is conjugated to a biotin ligase, which enzymatically incorporates a biotin moiety to mine any proteins that are once in close proximity to the candidate protein during the course of incubation (Cho et al., 2020; Lam et al., 2015). This target-oriented proteomic technique may be applied to complement the unlabelled approach to investigate the specific protein-protein interaction in spatial manner.

The breakthrough in tool development to study macropinosomes during infection processes that we reviewed here will increasingly benefit research linking macropinocytosis and other pathologies. Future studies will foster our understanding of macropinocytosis-mediated nutrient uptake in cancerous cells (Commisso et al., 2013) and the implication of macropinosome in membrane recycling during metastasis-associated cancer cell migration (Li et al., 2020). Likewise, research interests have emerged aiming to understand how macropinocytosis is involved in the uptake and propagation of protein aggregates in neurodegenerative diseases (Zeineddine & Yerbury, 2015). Taken together, we are just at the beginning to decrypt the diverse roles of macropinosomes in pathogen infections and pathologies offering a perspective with many exciting discoveries in the near future.

ACKNOWLEDGMENTS

Y.-Y.C. and V.S. were supported by grants from the Fondation pour la Recherche Médicale (FRM; SPF20160936275 and FDT20170436843). J.E. is a member of the LabEx consortia IBEID and MilieuInterieur. J.E. also acknowledges support from the ANR (grant StopBugEntry, AutoHostPath and HBPSensing) and the ERC (CoG EndoSubvert).

CONFLICT OF INTEREST

The authors declare no conflicts of interest.

DATA AVAILABILITY STATEMENT

Data sharing is not applicable to this article as no new data were created or analysed in this study.

ORCID

Yuen-Yan Chang  <https://orcid.org/0000-0003-4952-8941>

Jost Enninga  <https://orcid.org/0000-0002-5218-349X>

Virginie Stévenin  <https://orcid.org/0000-0003-1303-4085>

REFERENCES

- Alto, N. M., Shao, F., Lazar, C. S., Brost, R. L., Chua, G., Mattoo, S., ... Dixon, J. E. (2006). Identification of a bacterial type III effector family with G protein mimicry functions. *Cell*, 124(1), 133–145.

- Amara, A., & Mercer, J. (2015). Viral apoptotic mimicry. *Nature Reviews Microbiology*, 13(8), 461–469.
- Amyere, M., Mettlen, M., Van Der Smissen, P., Platek, A., Payrastré, B., Veithen, A., & Courtroy, P. J. (2001). Origin, originality, functions, subversions and molecular signaling of macropinocytosis. *International Journal of Medical Microbiology*, 291(6–7), 487–494.
- Aravamudhan, P., Raghunathan, K., Konopka-Anstadt, J., Pathak, A., Sutherland, D. M., Carter, B. D., & Dermody, T. S. (2020). Reovirus uses macropinocytosis-mediated entry and fast axonal transport to infect neurons. *PLoS Pathogens*, 16(2), e1008380.
- Bernitt, E., Koh, C. G., Gov, N., & Döbereiner, H. G. (2015). Dynamics of actin waves on patterned substrates: A quantitative analysis of circular dorsal ruffles. *PLoS One*, 10(1), 1–19.
- Bloomfield, G., & Kay, R. R. (2016). Uses and abuses of macropinocytosis. *Journal of Cell Science*, 129(14), 2697–2705.
- Bohdanowicz, M., & Grinstein, S. (2013). Role of phospholipids in endocytosis, phagocytosis, and macropinocytosis. *Physiological Reviews*, 93(1), 69–106.
- Brooks, A. B. E., Humphreys, D., Singh, V., Davidson, A. C., Arden, S. D., Buss, F., & Koronakis, V. (2017). MYO6 is targeted by Salmonella virulence effectors to trigger PI3-kinase signaling and pathogen invasion into host cells. *Proceedings of the National Academy of Sciences of the United States of America*, 114(15), 3915–3920.
- Buckley, C. M., Gopaldass, N., Bosmani, C., Johnston, S. A., Soldati, T., Insall, R. H., & King, J. S. (2016). WASH drives early recycling from macropinosomes and phagosomes to maintain surface phagocytic receptors. *Proceedings of the National Academy of Sciences*, 113(40), E5906–E5915.
- Buckley, C. M., & King, J. S. (2017). Drinking problems: Mechanisms of macropinosome formation and maturation. *FEBS Journal*, 284(22), 3778–3790.
- Buss, F., Kendrick-Jones, J., Lionne, C., Knight, A. E., Côté, G. P., & Luzio, J. P. (1998). The localization of myosin VI at the Golgi complex and leading edge of fibroblasts and its phosphorylation and recruitment into membrane ruffles of A431 cells after growth factor stimulation. *Journal of Cell Biology*, 143(6), 1535–1545.
- Carpenter, V., Chen, Y. S., Dolat, L., & Valdivia, R. H. (2017). The effector TepP mediates the recruitment and activation of Phosphoinositide 3 kinase on early Chlamydia trachomatis vacuoles. *mSphere*, 2(4), 1–15.
- Chang, Y.-Y., Stévenin, V., Duchateau, M., Giai Gianetto, Q., Hourdel, V., Rodrigues, C. D., ... Enninga, J. (2020). Shigella hijacks the exocyst to cluster macropinosomes for efficient vacuolar escape. *PLoS Pathogens*, 16(8), e1008822.
- Cho, K. F., Branon, T. C., Rajeev, S., Svinkina, T., Udeshi, N. D., Thoudam, T., ... Ting, A. Y. (2020). Split-TurboID enables contact-dependent proximity labeling in cells. *Proceedings of the National Academy of Sciences*, 117(22), 12143–12154.
- Clayton, E. L., & Cousin, M. A. (2009). The molecular physiology of activity-dependent bulk endocytosis of synaptic vesicles. *Journal of Neurochemistry*, 111(4), 901–914.
- Commisso, C., Davidson, S. M., Soydaner-Azeloglu, R. G., Parker, S. J., Kamphorst, J. J., Hackett, S., ... Bar-Sagi, D. (2013). Macropinocytosis of protein is an amino acid supply route in Ras-transformed cells. *Nature*, 497(7451), 633–6377.
- Condon, N. D., Heddleston, J. M., Chew, T.-L., Luo, L., McPherson, P. S., Ioannou, M. S., ... Wall, A. A. (2018). Macropinosome formation by tent pole ruffling in macrophages. *Journal of Cell Biology*, 217(11), 3873–3885.
- DeMali, K. A., Jue, A. L., & Burridge, K. (2006). IpaA targets $\beta 1$ integrins and rho to promote actin cytoskeleton rearrangements necessary for Shigella entry. *Journal of Biological Chemistry*, 281(51), 39534–39541.
- Doherty, G. J., & McMahon, H. T. (2009). Mechanisms of endocytosis. *Annual Review of Biochemistry*, 78, 857–902.
- Feliciano, W. D., Yoshida, S., Straight, S. W., & Swanson, J. A. (2011). Coordination of the Rab5 cycle on macropinosomes. *Traffic*, 12, 1911–1922.
- Ford, C., Nans, A., Boucrot, E., & Hayward, R. D. (2018). Chlamydia exploits filopodial capture and a macropinocytosis-like pathway for host cell entry. *PLoS Pathogens*, 14(5), e1007051.
- Fredlund, J., Santos, J. C., Stévenin, V., Weiner, A., Latour-Lambert, P., Rechav, K., ... Enninga, J. (2018). The entry of Salmonella in a distinct tight compartment revealed at high temporal and ultrastructural resolution. *Cellular Microbiology*, 20(4), 1–13.
- Freeman, M. C., Peek, C. T., Becker, M. M., Smith, E. C., & Denison, M. R. (2014). Coronaviruses induce entry-independent, continuous macropinocytosis. *mBio*, 5(4), e01340-14.
- Freeman, S. A., Uderhardt, S., Saric, A., Collins, R. F., Buckley, C. M., Mylvaganam, S., ... Grinstein, S. (2020). Lipid-gated monovalent ion fluxes regulate endocytic traffic and support immune surveillance. *Science*, 367(6475), 301–305.
- Friebel, A., Ilchmann, H., Aepfelbacher, M., Ehrbar, K., Machleidt, W., & Hardt, W. D. (2001). SopE and SopE2 from Salmonella typhimurium activate different sets of RhoGTPases of the host cell. *Journal of Biological Chemistry*, 276(36), 34035–34040.
- Fu, Y., & Galán, J. E. (1999). A Salmonella protein antagonizes Rac-1 and Cdc42 to mediate host-cell recovery after bacterial invasion. *Nature*, 401(6750), 293–297.
- García-del-Portillo, F., & Finlay, B. B. (1994). Salmonella invasion of non-phagocytic cells induces formation of macropinosomes in the salmonella invasion of nonphagocytic cells induces formation of macropinosomes in the host cell. *Infection and Immunity*, 62(10), 4641–4645.
- García-Pérez, B. E., De la Cruz-López, J. J., Castañeda-Sánchez, J. I., Muñoz-Duarte, A. R., Hernández-Pérez, A. D., Villegas-Castrejón, H., ... Luna-Herrera, J. (2012). Macropinocytosis is responsible for the uptake of pathogenic and non-pathogenic mycobacteria by B lymphocytes (Raji cells). *BMC Microbiology*, 12, 246–259.
- García-Pérez, B. E., Mondragón-Flores, R., & Luna-Herrera, J. (2003). Internalization of Mycobacterium tuberculosis by macropinocytosis in non-phagocytic cells. *Microbial Pathogenesis*, 35(2), 49–55.
- Hayward, R. D., & Koronakis, V. (1999). Direct nucleation and bundling of actin by the SipC protein of invasive Salmonella. *EMBO Journal*, 18(18), 4926–4934.
- Henson, P. M., Bratton, D. L., & Fadok, V. A. (2001). Apoptotic cell removal. *Current Biology*, 11(19), 795–805.
- Hobbs, G. A., & Der, C. J. (2020). Binge drinking: Macropinocytosis promotes tumorigenic growth of RAS-mutant cancers. *Trends in Biochemical Sciences*, 45(6), 459–461.
- Hoffmann, P. R., DeCathelineau, A. M., Ogden, C. A., Leverrier, Y., Bratton, D. L., Daleke, D. L., ... Henson, P. M. (2001). Phosphatidylserine (PS) induces PS receptor-mediated macropinocytosis and promotes clearance of apoptotic cells. *Journal of Cell Biology*, 155(4), 649–659.
- Hu, T., Zhang, L., Wang, W., Yang, D., Xiao, J., Zhang, Y., ... Liu, Q. (2019). Edwardsiella piscicida enters nonphagocytic cells via a macropinocytosis-involved hybrid mechanism. *Journal of Bacteriology*, 201(5), 1–13.
- Huynh, K. K., Kay, J. G., Stow, J. L., & Grinstein, S. (2007). Fusion, fission, and secretion during phagocytosis. *Physiology*, 22(6), 366–372.
- Jewett, T. J., Fischer, E. R., Mead, D. J., & Hackstadt, T. (2006). Chlamydial TARP is a bacterial nucleator of actin. *Proceedings of the National Academy of Sciences of the United States of America*, 103(42), 15599–15604.
- Jiang, J., Kolpak, A. L., & Bao, Z. Z. (2010). Myosin IIB isoform plays an essential role in the formation of two distinct types of macropinosomes. *Cytoskeleton*, 67(1), 32–42.
- Kehl, A., Göser, V., Reuter, T., Liss, V., Franke, M., John, C., ... Hensel, M. (2020). A trafficome-wide RNAi screen reveals deployment of early

- and late secretory host proteins and the entire late endo-/lysosomal vesicle fusion machinery by intracellular *Salmonella*. *PLoS Pathogens*, 16(7), 1–30.
- Kerr, M. C., Lindsay, M. R., Luetterforst, R., Hamilton, N., Simpson, F., Parton, R. G., ... Teasdale, R. D. (2006). Visualisation of macropinosome maturation by the recruitment of sorting nexins. *Journal of Cell Science*, 119, 3967–3980.
- Kerr, M. C., & Teasdale, R. D. (2009). Defining macropinocytosis. *Traffic*, 10(4), 364–371.
- Ketterer, M. R., Shao, J. Q., Hornick, D. B., Buscher, B., Bandi, V. K., & Apicella, M. A. (1999). Infection of primary human bronchial epithelial cells by Haemophilus influenzae: Macropinocytosis as a mechanism of airway epithelial cell entry. *Infection and Immunity*, 67(8), 4161–4170.
- Krysko, D. V., Denecker, G., Festjens, N., Gabriels, S., Parthoens, E., D'Herde, K., & Vandenabeele, P. (2006). Macrophages use different internalization mechanisms to clear apoptotic and necrotic cells. *Cell Death and Differentiation*, 13(12), 2011–2022.
- Kühn, S., Lopez-Montero, N., Chang, Y.-Y., Sartori-Rupp, A., & Enninga, J. (2017). Imaging macropinosomes during *Shigella* infections. *Methods*, 127, 12–22.
- Lam, S. S., Martell, J. D., Kamer, K. J., Deerinck, T. J., Ellisman, M. H., Mootha, V. K., & Ting, A. Y. (2015). Directed evolution of APEX2 for electron microscopy and proximity labeling. *Nature Methods*, 12(1), 51–54.
- Lane, B. J., Mutchler, C., Al Khodor, S., Grieshaber, S. S., & Carabeo, R. A. (2008). Chlamydial entry involves TARP binding of guanine nucleotide exchange factors. *PLoS Pathogens*, 4(3), e1000014.
- Lanzavecchia, A. (1996). Mechanisms of antigen uptake for presentation. *Current Opinion in Immunology*, 8(3), 348–354.
- LaRock, D. L., Chaudhary, A., & Miller, S. I. (2015). *Salmonellae* interactions with host processes. *Nature Reviews Microbiology*, 13(4), 191–205.
- Lee, S. W., Zhang, Y., Jung, M., Cruz, N., Alas, B., & Commisso, C. (2019). EGFR-PAK signaling selectively regulates glutamine deprivation-induced macropinocytosis. *Developmental Cell*, 50, 381–392.
- Lewis, W. H. (1931). Pinocytosis. *Bulletin of the Johns Hopkins Hospital*, 49, 17–27.
- Li, Y., Gonzalez, W. G., Andreev, A., Tang, W., Gandhi, S., Cunha, A., ... Bronner, M. E. (2020). Macropinocytosis-mediated membrane recycling drives neural crest migration by delivering F-actin to the lamellipodium. *Proceedings of the National Academy of Sciences of the United States of America*, 117(44), 27400–27411.
- Liberali, P., Kakkonen, E., Turacchio, G., Valente, C., Spaar, A., Perinetti, G., ... Luini, A. (2008). The closure of Pak1-dependent macropinosomes requires the phosphorylation of CtBP1/BARS. *EMBO Journal*, 27(7), 970–981.
- Lin, X. P., Mintern, J. D., & Gleeson, P. A. (2020). Macropinocytosis in different cell types: Similarities and differences. *Membranes (Basel)*, 10(8), 177.
- Liu, X., Salokas, K., Weldatsadik, R. G., Gawryski, L., & Varjosalo, M. (2020). Combined proximity labeling and affinity purification-mass spectrometry workflow for mapping and visualizing protein interaction networks. *Nature Protocols*, 15(10), 3182–3211.
- Loh, L. N., McCarthy, E. M. C., Narang, P., Khan, N. A., & Ward, T. H. (2017). *Escherichia coli* K1 utilizes host macropinocytic pathways for invasion of brain microvascular endothelial cells. *Traffic*, 18(11), 733–746.
- Mason, D., Mallo, G. V., Terebiznik, M. R., Payrastra, B., Finlay, B. B., Brumell, J. H., ... Grinstein, S. (2007). Alteration of Epithelial Structure and Function Associated with PtdIns(4,5)P₂ Degradation by a Bacterial Phosphatase. *The Journal of General Physiology*, 129(4), 267–283. <https://doi.org/10.1085/jgp.200609656>.
- Meier, O., Boucke, K., Hammer, S. V., Keller, S., Stidwill, R. P., Hemmi, S., & Greber, U. F. (2002). Adenovirus triggers macropinocytosis and endosomal leakage together with its clathrin-mediated uptake. *Journal of Cell Biology*, 158(6), 1119–1131.
- Mercer, J., & Helenius, A. (2009). Virus entry by macropinocytosis. *Nature Cell Biology*, 11(5), 510–520.
- Mercer, J., & Helenius, A. (2012). Gulping rather than sipping: Macropinocytosis as a way of virus entry. *Current Opinion in Microbiology*, 15(4), 490–499.
- Misselwitz, B., Barrett, N., Kreibich, S., Vonaesch, P., Andritschke, D., Rout, S., ... Hardt, W. D. (2012). Near surface swimming of salmonella Typhimurium explains target-site selection and cooperative invasion. *PLoS Pathogens*, 8(7), 9.
- Moreau, H. D., Blanch-Mercader, C., Attia, R., Maurin, M., Alraies, Z., Sanséau, D., ... Lennon-Duménil, A. M. (2019). Macropinocytosis overcomes directional bias in dendritic cells due to hydraulic resistance and facilitates space exploration. *Developmental Cell*, 49(2), 171.e5–188.e5.
- Morishita, S., Wada, N., Fukuda, M., & Nakamura, T. (2019). Rab5 activation on macropinosomes requires ALS2, and subsequent Rab5 inactivation through ALS2 detachment requires active Rab7. *FEBS Letters*, 593, 230–241.
- Mounier, J., Popoff, M. R., Enninga, J., Frame, M. C., Sansonetti, P. J., & Van Nhieu, G. T. (2009). The IpaC carboxyterminal effector domain mediates Src-dependent actin polymerization during *Shigella* invasion of epithelial cells. *PLoS Pathogens*, 5(1), e1000271.
- Nguyen, T., Kim, J., Doan, T. T., Lee, M. W., & Lee, M. (2020). APEX proximity labeling as a versatile tool for biological research. *Biochemistry*, 59(3), 260–269.
- Nichols, C. D., & Casanova, J. E. (2010). *Salmonella*-directed recruitment of new membrane to invasion foci via the host exocyst complex. *Current Biology*, 20(14), 1316–1320.
- Niebuhr, K., Giuriato, S., Pedron, T., Philpott, D. J., Gaits, F., Sable, J., ... Payrastra, B. (2002). Conversion of PtdIns(4, 5)P₂ into PtdIns(5)P by the *S.flexneri* effector IpgD reorganizes host cell morphology. *EMBO Journal*, 21(19), 5069–5078.
- Norbury, C. C. (2006). Drinking a lot is good for dendritic cells. *Immunology*, 117(4), 443–451.
- Ohya, K., Handa, Y., Ogawa, M., Suzuki, M., & Sasakawa, C. (2005). IpgB1 is a novel *Shigella* effector protein involved in bacterial invasion of host cells: Its activity to promote membrane ruffling via Rac1 and Cdc42 activation. *Journal of Biological Chemistry*, 280(25), 24022–24034.
- Patel, J. C., & Galán, J. E. (2006). Differential activation and function of Rho GTPases during *Salmonella*- host cell interactions. *The Journal of Cell Biology*, 175(3), 453–463. <https://doi.org/10.1083/jcb.200605144>.
- Piscatelli, H. L., Li, M., & Zhou, D. (2016). Dual 4- and 5-phosphatase activities regulate SopB-dependent phosphoinositide dynamics to promote bacterial entry. *Cellular Microbiology*, 18(5), 705–719.
- Pizarro-Cerdá, J., Charbit, A., Enninga, J., Lafont, F., & Cossart, P. (2016). Manipulation of host membranes by the bacterial pathogens *Listeria*, *Francisella*, *Shigella* and *Yersinia*. *Seminars in Cell and Developmental Biology*, 60, 155–167.
- Porat-Shliom, N., Kloog, Y., & Donaldson, J. G. (2008). A unique platform for H-Ras signaling involving clathrin-independent endocytosis. *Molecular Biology of the Cell*, 19, 765–775.
- Quinn, S. E., Huang, L., Kerkvliet, J. G., Swanson, J. A., Smith, S., Hoppe, A. D., ... Scott, B. L. (2020). The structural dynamics of macropinosome formation and PI3-kinase-mediated sealing revealed by lattice lightsheet microscopy. *BioRxiv Preprint* <https://doi.org/10.1101/2020.12.01.390195>
- Racoosin, E. L., & Swanson, J. A. (1993). Macropinosome maturation and fusion with tubular lysosomes in macrophages. *Journal of Cell Biology*, 121(5), 1011–1020.
- Ramarao, N., Le Clairche, C., Izard, T., Bourdet-Sicard, R., Ageron, E., Sansonetti, P. J., ... Tran Van Nhieu, G. (2007). Capping of actin filaments by vinculin activated by the *Shigella* IpaA carboxyl-terminal domain. *FEBS Letters*, 581(5), 853–857.
- Santos, J. C., Duchateau, M., Fredlund, J., Weiner, A., Mallet, A., Schmitt, C., ... Enninga, J. (2015). The COPII complex and lysosomal

- VAMP7 determine intracellular *Salmonella* localization and growth. *Cellular Microbiology*, 17(12), 1699–1720.
- Schermelleh, L., Ferrand, A., Huser, T., Eggeling, C., Sauer, M., ... Drummen, G. P. C. (2019). Super-resolution microscopy demystified. *Nature Cell Biology*, 21, 72–84.
- Schink, K. O., Tan, K. W., Spangenberg, H., Martorana, D., Sneeggen, M., Campsteijn, C., ... Stenmark, H. (2017). The PtdIns3P-binding protein Phafin2 escorts macropinosomes through the cortical actin cytoskeleton. *BioRxiv Preprint*: <https://doi.org/10.1101/180760>
- Schnatwinkel, C., Christoforidis, S., Lindsay, M. R., Uttenweiler-Joseph, S., Wilm, M., Parton, R. G., & Zerial, M. (2004). The Rab5 effector Rabankyrin-5 regulates and coordinates different endocytic mechanisms. *PLoS Biology*, 2(9), E261.
- Seaman, M. N. (2012). The retromer complex - endosomal protein recycling and beyond. *Journal of Cell Science*, 125(Pt 20), 4693–4702.
- Snijder, B., Sacher, R., Rämö, P., Damm, E.-M., Liberali, P., & Pelkmans, L. (2009). Population context determines cell-to-cell variability in endocytosis and virus infection. *Nature*, 461(7263), 520–523.
- Steinhäuser, C., Dallenga, T., Tchikov, V., Schaible, U. E., Schütze, S., & Reiling, N. (2014). Immunomagnetic isolation of pathogen-containing phagosomes and apoptotic blebs from primary phagocytes. *Current Protocol in Immunology*, 105, 14.36.1–14.36.26.
- Stévenin, V., Chang, Y.-Y., Le Toquin, Y., Duchateau, M., Gai Gianetto, Q., Luk, C. H., ... Enninga, J. (2019). Dynamic growth and shrinkage of the *Salmonella*-containing vacuole determines the intracellular pathogen niche. *Cell Reports*, 29(12), 3958.e7–3973.e7.
- Stow, J. L., Hung, Y., & Wall, A. A. (2020). Macropinocytosis: Insights from immunology and cancer. *Current Opinion in Cell Biology*, 65, 131–140.
- Swanson, J. A. (2008). Shaping cups into phagosomes and macropinosomes. *Nature Reviews: Molecular Cell Biology*, 9(8), 639–649.
- Swanson, J. A., & Watts, C. (1995). Macropinocytosis. *Trends in Cell Biology*, 5(11), 424–428.
- Thalman, J., Janik, K., May, M., Sommer, K., Ebeling, J., Hofmann, F., ... Klos, A. (2010). Actin re-organization induced by *Chlamydia trachomatis* serovar D - evidence for a critical role of the effector protein CT166 targeting rac. *PLoS One*, 5(3), 1–14.
- Terebiznik, M. R., Vieira, O. V., Marcus, S. L., Slade, A., Yip, C. M., Trimble, W. S., ... Grinstein, S. (2002). Elimination of host cell PtdIns(4,5)P(2) by bacterial SigD promotes membrane fission during invasion by *Salmonella*. *Nature Cell Biology*, 4(10), 766–773. <https://doi.org/10.1038/ncb854>.
- Veithen, A., Cupers, P., Baudhuin, P., & Courtoy, P. J. (1996). v-Src induces constitutive macropinocytosis in rat fibroblasts. *Journal of Cell Science*, 109(8), 2005–2012.
- Voznica, J., Gardella, C., Belotserkovsky, I., Dufour, A., Enninga, J., & Stévenin, V. (2017). Identification of parameters of host cell vulnerability during *Salmonella* infection by quantitative image analysis and modeling. *Infection and Immunity*, 86(1), e00644–e00617.
- Wagner, S., Grin, I., Malmshemer, S., Singh, N., Torres-Vargas, C. E., & Westerhausen, S. (2018). Bacterial type III secretion systems: A complex device for the delivery of bacterial effector proteins into eukaryotic host cells. *FEMS Microbiology Letters*, 365(19), 1–13.
- Walker, L. R., Hussein, H. A., & Akula, S. M. (2016). Subcellular fractionation method to study endosomal trafficking of Kaposi's sarcoma-associated herpesvirus. *Cell & Bioscience*, 6, 1.
- Watarai, M., Derre, I., Kirby, J., Growney, J. D., Dietrich, W. F., & Isberg, R. R. (2001). *Legionella pneumophila* is internalized by a macropinocytotic uptake pathway controlled by the dot/icm system and the mouse Lgn1 locus. *Journal of Experimental Medicine*, 194(8), 1081–1095.
- Watarai, M., Makino, S. I., Fujii, Y., Okamoto, K., & Shirahata, T. (2002). Modulation of *Brucella*-induced macropinocytosis by lipid rafts mediates intracellular replication. *Cellular Microbiology*, 4(6), 341–355.
- Weiner, A., Mellouk, N., Lopez-Montero, N., Chang, Y. Y., Souque, C., Schmitt, C., & Enninga, J. (2016). Macropinosomes are key players in early *Shigella* invasion and vacuolar escape in epithelial cells. *PLoS Pathogens*, 5(12), e1005602.
- Williamson, C. D., & Donaldson, J. G. (2019). Arf6, JIP3, and dynein shape and mediate macropinocytosis. *Molecular Biology of the Cell*, 30(12), 1477–1489.
- Zeineddine, R., & Yerbury, J. J. (2015). The role of macropinocytosis in the propagation of protein aggregation associated with neurodegenerative diseases. *Frontiers in Physiology*, 6, 277.
- Zenni, M. K., Giardina, P. C., Harvey, H. A., Shao, J., Ketterer, M. R., Lubaroff, D. M., ... Apicella, M. A. (2000). Macropinocytosis as a mechanism of entry into primary human urethral epithelial cells by *Neisseria gonorrhoeae*. *Infection and Immunity*, 68(3), 1696–1699.
- Zhou, D., Mooseker, M. S., & Galán, J. E. (1999). Role of the *S. typhimurium* actin-binding protein SipA in bacterial internalization. *Science*, 283(5410), 2092–2095.

How to cite this article: Chang Y-Y, Enninga J, Stévenin V. New methods to decrypt emerging macropinosome functions during the host–pathogen crosstalk. *Cellular Microbiology*. 2021;1–12. <https://doi.org/10.1111/cmi.13342>