



**HAL**  
open science

## **SARS-CoV-2 infection damages airway motile cilia and impairs mucociliary clearance**

Rémy Robinot, Mathieu Hubert, Guilherme Dias de Melo, Françoise Lazarini, Timothée Bruel, Nikaïa Smith, Sylvain Levallois, Florence Larrous, Julien Fernandes, Stacy Gellenoncourt, et al.

► **To cite this version:**

Rémy Robinot, Mathieu Hubert, Guilherme Dias de Melo, Françoise Lazarini, Timothée Bruel, et al.. SARS-CoV-2 infection damages airway motile cilia and impairs mucociliary clearance. 2021. pasteur-03244406

**HAL Id: pasteur-03244406**

**<https://pasteur.hal.science/pasteur-03244406v1>**

Preprint submitted on 1 Jun 2021

**HAL** is a multi-disciplinary open access archive for the deposit and dissemination of scientific research documents, whether they are published or not. The documents may come from teaching and research institutions in France or abroad, or from public or private research centers.

L'archive ouverte pluridisciplinaire **HAL**, est destinée au dépôt et à la diffusion de documents scientifiques de niveau recherche, publiés ou non, émanant des établissements d'enseignement et de recherche français ou étrangers, des laboratoires publics ou privés.

Copyright

1  
2  
3  
4  
5  
6  
7  
8  
9  
10  
11  
12  
13  
14  
15  
16  
17  
18  
19  
20  
21  
22  
23  
24  
25  
26  
27

## **SARS-CoV-2 infection damages airway motile cilia and impairs mucociliary clearance**

Rémy Robinot<sup>1, 13</sup>, Mathieu Hubert<sup>1, 13</sup>, Guilherme Dias de Melo<sup>2</sup>, Françoise Lazarini<sup>3</sup>, Timothée Bruel<sup>1</sup>, Nikaïa Smith<sup>4</sup>, Sylvain Levallois<sup>5</sup>, Florence Larrous<sup>2</sup>, Julien Fernandes<sup>6</sup>, Stacy Gellenoncourt<sup>1</sup>, Stéphane Rigaud<sup>7</sup>, Olivier Gorgette<sup>8</sup>, Catherine Thouvenot<sup>8</sup>, Céline Trébeau<sup>9</sup>, Adeline Mallet<sup>8</sup>, Guillaume Duménil<sup>8</sup>, Samy Gobaa<sup>10</sup>, Raphaël Etournay<sup>9</sup>, Pierre-Marie Lledo<sup>3</sup>, Marc Lecuit<sup>5</sup>, Hervé Bourhy<sup>2</sup>, Darragh Duffy<sup>4</sup>, Vincent Michel<sup>11\*</sup>, Olivier Schwartz<sup>1, 12\*</sup>, and Lisa A. Chakrabarti<sup>1, 14\*</sup>.

1 Virus & Immunity Unit, Department of Virology, Institut Pasteur, Paris, France; CNRS UMR 3569, Paris, France

2 Lyssavirus Epidemiology and Neuropathology Unit, Institut Pasteur, Paris, France

3 Perception and Memory Unit, Institut Pasteur, France; CNRS UMR 3571, Paris, France

4 Translational Immunology Lab, Department of Immunology, Institut Pasteur, Paris, France

5 Biology of Infection Unit, Institut Pasteur, Paris, France; Inserm U1117, Paris, France

6 UtechS Photonics BioImaging, C2RT, Institut Pasteur, Paris, France

7 Image Analysis Hub, Institut Pasteur, Paris, France

8 UtechS Ultrastructural BioImaging UBI, C2RT, Institut Pasteur, Paris, France

9 Institut de l'Audition, Institut Pasteur, Paris, France

10 Biomaterials and Microfluidics Core Facility, Institut Pasteur, Paris, France

11 Institut de l'Audition, Institut Pasteur, INSERM, Paris, France

12 Vaccine Research Institute, Créteil, France

13 These authors contributed equally

14 Lead contact

\* correspondence: [vincent.michel@pasteur.fr](mailto:vincent.michel@pasteur.fr), [olivier.schwartz@pasteur.fr](mailto:olivier.schwartz@pasteur.fr), and [chakra@pasteur.fr](mailto:chakra@pasteur.fr)

1    **ABSTRACT**

2  
3  
4  
5  
6  
7  
8  
9  
10  
11  
12  
13  
14  
15  
16

Understanding how SARS-CoV-2 spreads within the respiratory tract is important to define the parameters controlling the severity of COVID-19. We examined the functional and structural consequences of SARS-CoV-2 infection in a reconstituted human bronchial epithelium model. SARS-CoV-2 replication caused a transient decrease in epithelial barrier function and disruption of tight junctions, though viral particle crossing remained limited. Rather, SARS-CoV-2 replication led to a rapid loss of the ciliary layer, characterized at the ultrastructural level by axoneme loss and misorientation of remaining basal bodies. The motile cilia function was compromised, as measured in a mucociliary clearance assay. Epithelial defense mechanisms, including basal cell mobilization and interferon-lambda induction, ramped up only after the initiation of cilia damage. Analysis of SARS-CoV-2 infection in Syrian hamsters further demonstrated the loss of motile cilia *in vivo*. This study identifies cilia damage as a pathogenic mechanism that could facilitate SARS-CoV-2 spread to the deeper lung parenchyma.

## 1 INTRODUCTION

2 The COVID-19 pandemic remains a worldwide public health emergency. The infection caused by the severe  
3 acute respiratory syndrome coronavirus 2 (SARS-CoV-2) emerged in Wuhan, China, in December 2019 (Lu  
4 et al., 2020; Zhou et al., 2020b; Zhu et al., 2020b) and spread to all continents except Antarctica, affecting  
5 over 31 million persons and causing over 970,000 deaths as of Sept. 24, 2020 (covid19.who.int).

6  
7 The respiratory syndrome COVID-19 ranges from mild upper respiratory tract infection to bilateral  
8 pneumonia with acute respiratory distress syndrome (ARDS) and multiple organ failure (Guan et al., 2020;  
9 Huang et al., 2020; Zhou et al., 2020a). Pathological examination indicates that SARS-CoV-2 targets  
10 primarily the airways and the lungs (Tian et al., 2020; Xu et al., 2020). Severe cases are characterized by  
11 diffuse alveolar damage and formation of hyaline membranes that limit gaseous exchanges. COVID-19  
12 pneumonia is associated with inflammatory infiltrates in the alveolar space and a systemic cytokine storm,  
13 suggesting that an exacerbated immune response contributes to damaged lung function (Huang et al.,  
14 2020; Liao et al., 2020). Induction of interferons appears limited in the more severe clinical cases, pointing  
15 to an imbalance between antiviral and inflammatory cytokine responses (Blanco-Melo et al., 2020; Hadjadj  
16 et al., 2020).

17  
18 SARS-CoV-2 is genetically closely related to the original SARS-CoV-1 coronavirus, which caused an outbreak  
19 of severe acute respiratory syndrome in 2002-2003, affecting about 8,000 patients and resulting in 774  
20 reported deaths (Peiris et al., 2003; Petersen et al., 2020). Both viruses use the angiotensin converting  
21 enzyme 2 (ACE2) as a receptor, and the transmembrane serine protease 2 (TMPRSS2) as a viral entry  
22 cofactor (Hoffmann et al., 2020; Zhou et al., 2020b). The pneumonia induced by the two coronaviruses  
23 show similar features in severe cases. SARS-CoV-2 induces a mortality rate approximately ten times lower  
24 than SARS-CoV-1, but shows much higher effective transmissibility, and thus represents a greater threat  
25 to global health (Petersen et al., 2020). Possible reasons for the high transmissibility of SARS-CoV-2 include  
26 an active viral replication in upper airway epithelia at an early stage of infection. The number of SARS-CoV-  
27 2 genomic copies in nasopharyngeal swabs is generally high at symptom onset ( $\geq 10^6$  viral RNA copies/mL)  
28 and persists for about 5 days before declining (Wolfel et al., 2020; Zou et al., 2020). This is in contrast to  
29 the pattern observed for SARS-CoV-1, with viral RNA peaking about 10 days after symptom onset and  
30 remaining of moderate magnitude (Peiris et al., 2003). Therefore, analyzing how SARS-CoV-2 spreads in  
31 the airways is relevant to understand its pandemic potential and potentially identify novel mitigation  
32 strategies.

1 The epithelium lining the airways plays a key role in the defense against infections (Tilley et al., 2015). It  
2 comprises goblet cells that secrete a protective mucus able to trap inhaled particles, including microbes.  
3 Ciliated cells, which constitute over half of epithelial cells, possess an apical layer of about 200 cilia that  
4 beat rhythmically in a coordinated fashion, resulting in a movement of the overlaying mucus layer towards  
5 the laryngopharynx, where it is ultimately swallowed (Spassky and Meunier, 2017). This mechanism of  
6 mucociliary clearance prevents the accumulation of particles and mucus within the lungs. The airways  
7 basal cells, located close to the epithelial basement membrane, respond to injury by proliferating and  
8 differentiating into other epithelial cell types. Studies of autopsy samples from COVID-19 patients and  
9 experimental infection of tissue explants have documented SARS-CoV-2 replication predominantly in the  
10 upper and lower airway epithelia and in the lung alveoli (Hou et al., 2020; Hui et al., 2020; Yao et al., 2020).  
11 Infection of reconstituted airway epithelia showed a preferential targeting of ciliated cells, with an  
12 infection of goblet cells in some (Mulay et al., 2020; Pizzorno et al., 2020; Ravindra et al., 2020; Zhu et al.,  
13 2020a) but not all studies (Hou et al., 2020; Zhu et al., 2020b). The functional consequences of SARS-CoV-  
14 2 infection on epithelial functions remain to be characterized.

15  
16 To better understand the mechanism of SARS-CoV-2 dissemination in the respiratory tract, we analyzed  
17 the ultrastructural and functional changes induced by infection in a reconstituted human bronchial  
18 epithelium model. This system enabled the study of SARS-CoV-2 interactions with its primary target cells  
19 in a well-differentiated pseudostratified epithelium. We also examined the impact of SARS-CoV-2 infection  
20 on the airway mucosa *in vivo*, using the physiologically relevant Syrian hamster model.

21

22

## 23 **RESULTS**

24

### 25 **SARS-CoV-2 actively replicates in a reconstituted human bronchial epithelium model**

26 SARS-CoV-2 infection was studied in the MucilAir™ model, consisting of primary human bronchial  
27 epithelial cells grown over a porous membrane and differentiated at the air/liquid interface (ALI) for over  
28 4 weeks (Fig. 1A). We first verified by scanning electron microscopy (SEM) that the bronchial epithelial  
29 cells were differentiated into a pseudostratified epithelium comprising three main cell types (Fig. 1B):  
30 ciliated cells harboring a dense layer of 5-10  $\mu\text{m}$  long motile cilia, goblet cells enriched in mucus-containing  
31 vesicles (arrowhead), and basal cells spread flat on the insert membrane.

32

1 The reconstituted epithelia were infected with a viral suspension of SARS-CoV-2 at  $10^6$  pfu/mL deposited  
2 on the apical side for 4h, restored to ALI conditions, and monitored for infection for 7 days. We observed  
3 a rapid increase of extracellular viral RNA in apical culture supernatants, with concentrations reaching up  
4 to  $10^6$  viral RNA copies/ $\mu$ L at 2 days post-infection (dpi), followed by stable or slowly decreasing viral RNA  
5 levels until 7 dpi (Fig. 1C). In contrast, minimal concentrations of viral RNA were detected in the basolateral  
6 compartment (Fig. 1D), indicating that SARS-CoV-2 particles were predominantly released from the apical  
7 side of the epithelium. Infectious viral particle production in apical supernatants initially tracked with viral  
8 RNA production, with a rapid increase at 2 dpi to reach a mean of  $1.8 \times 10^6$  TCID<sub>50</sub>/mL, followed by a  
9 plateau at 4 dpi (Fig. 1E). A decrease to  $6.1 \times 10^4$  TCID<sub>50</sub>/mL was then observed at 7 dpi, suggesting a  
10 partial containment of infectious virus production. Immunofluorescence analysis of the reconstituted  
11 epithelia revealed a patchy distribution of infected cells expressing the SARS-CoV-2 spike protein at 2 and  
12 4 dpi, and minimal persistence of productively infected cells at 7 dpi, consistent with partial viral  
13 containment after one week of infection (Fig. 1F).

14

#### 15 **SARS-CoV-2 infection transiently impairs epithelial barrier function**

16 SARS-CoV-2 productive infection locally altered the distribution of zonula occludens protein-1 (ZO-1),  
17 which associates to tight junctions. The characteristic ZO-1 staining pattern at cell boundaries remained  
18 intact in mock-infected epithelia (Fig. 1F, left), but appeared disrupted in areas with viral antigen  
19 expression (Fig. 1F, right), suggesting a possible impairment of epithelial barrier integrity. Image analysis  
20 confirmed that the average number of neighbors per cell at 4 dpi decreased from 5.93 to 5.72 ( $P < 0.001$ ),  
21 a value characteristic of actively remodeling epithelia (Aigouy et al., 2010; Farhadifar et al., 2007) (Fig. S1A-  
22 H, J). In addition, infection induced changes in the average area of ZO-1-delimited cells, which significantly  
23 increased at 2 and 4 dpi, but decreased at 7 dpi as compared to uninfected samples (Fig.S1A-I), supporting  
24 a dynamic remodeling of the epithelium. The epithelial packing geometry returned to a more regular  
25 pattern at 7 dpi, with a higher proportion of hexagonal cells than at 4 dpi, pointing to the restoration of  
26 the tight junction network.

27

28 To test barrier function, we measured the trans-epithelial electrical resistance (TEER) between electrodes  
29 placed in the apical and basal compartments of reconstituted bronchial epithelia (Fig. 1G). As expected,  
30 TEER proved relatively stable in mock-treated cultures, with values remaining above  $600 \Omega \cdot \text{cm}^2$ . In SARS-  
31 CoV-2 infected cultures, there was a transient but significant 3.3x TEER decrease at 4 dpi (Fig. 1H;  $P = 0.02$ ).  
32 Apical-to-basolateral transport of FITC-coupled dextran showed an inverse relation to TEER, with a

1 transient 2.5x increase in paracellular permeability at 4 dpi (Fig. 1I-J; P=0.015). Both TEER and permeability  
2 values returned to baseline levels at 7 dpi, demonstrating epithelial regeneration after SARS-CoV-2  
3 infection.

4  
5 Measurement of cell death by the release of lactate dehydrogenase (LDH) in apical supernatants showed  
6 an increase at 4 dpi in infected epithelia (Fig. S2A; P=0.01), confirming that SARS-CoV-2 exerted a transient  
7 cytopathic effect on epithelial cells. Dying cells extruded from the apical side were observed at the surface  
8 of infected epithelia, though their numbers remained limited (Fig. S2B). Extruded cells had a rounded  
9 shape and sometimes carried multiple viral particles at their surface (Fig. S2C), suggesting virally-induced  
10 cell death. Taken together, these findings showed that SARS-CoV-2 caused a transient loss of epithelial  
11 barrier function, due to cytopathic effect and a perturbation of the tight junction network. However, SARS-  
12 CoV-2 infection did not cause a general disruption of the epithelial layer and was compatible with rapid  
13 epithelial regeneration.

14

#### 15 **SARS-CoV-2 infection damages the cilia layer**

16 The nature of infected cells was characterized by immunofluorescence confocal imaging. At 2 dpi, the  
17 majority of cells expressing the SARS-CoV-2 spike antigen at their surface (spike+ cells) co-expressed the  
18 cilia marker  $\beta$ -tubulin IV, confirming that ciliated cells represented the main viral targets in this model (Fig.  
19 2A). At 4 dpi, the majority of spike+ cells still expressed  $\beta$ -tubulin IV, though we noted the presence of  
20 infected cells with weak or absent  $\beta$ -tubulin IV staining (Fig. 2B). Basal cells expressing the cytokeratin-5  
21 marker did not appear infected, with the exception of rare cells that had lost their basal localization (Fig.  
22 S3A). Of note, some spike-negative basal cells changed morphology and appeared raised through the  
23 pseudo-stratified epithelium in infected samples, suggesting an epithelial response to virally-induced  
24 damage (Fig. 2B). We did not detect infected cells expressing the goblet cell marker MUC5AC (Fig. S3B).  
25 However, further analyses by SEM documented viral budding from cells with multiple secretory pores that  
26 may represent rare infected goblet cells (Fig. S3C). Interestingly, viral production was also documented in  
27 cells with a transitional phenotype characterized by the presence of both motile cilia and abundant  
28 secretory vesicles (Fig. S3D). Taken together, these results showed a preferential tropism of SARS-CoV-2  
29 for ciliated epithelial cells, with occasional infection of transitional and secretory cells.

30

31 As we had observed infected cells with weak  $\beta$ -tubulin IV staining, we asked whether SARS-CoV-2 infection  
32 could perturb the layer of motile cilia present at the apical side of ciliated cells. To this goal, we quantified

1 the area occupied by  $\beta$ -tubulin IV staining (tubulin+ area) on projections of confocal images obtained  
2 sequentially in the course of infection (Fig. 2C-D). The tubulin+ area remained unchanged at 2 dpi, but  
3 decreased at 4 dpi (median values: 87.9% in mock, 61.7% in infected;  $P=0.0012$ ), and showed only limited  
4 recovery at 7 dpi (94.8 % in mock vs 67.9% in infected,  $P=0.0043$ ). SEM imaging confirmed a marked cilia  
5 loss at 4 dpi and showed that deciliated areas were not devoid of cells, but rather occupied by cells covered  
6 by flattened microvilli (Fig. 2E).

7

8 The formation of deciliated areas could occur via the loss of motile cilia at the surface of infected cells, or  
9 via the replacement of dead ciliated cells by cells involved in epithelial regeneration. To distinguish  
10 between these non-exclusive possibilities, we analyzed the distribution of cilia at the early stage of  
11 infection, prior to the occurrence of measurable cell death. A set of  $\geq 70$  cells was analyzed on confocal  
12 images obtained at 2 dpi in each of three categories: ciliated cells from mock-infected epithelia (mock),  
13 productively infected ciliated cells (spike+) and bystander uninfected ciliated cells (spike-) from SARS-CoV-  
14 2 exposed epithelia. For each cell, the averaged intensity profile of  $\beta$ -tubulin IV staining was measured  
15 along the depth axis (Fig. 3A). There was a bimodal distribution of  $\beta$ -tubulin in mock cells, with a distal  
16 peak corresponding to cilia and a proximal peak located just below the plasma membrane, corresponding  
17 to the area where basal bodies anchor cilia into the cytoplasm. Examination of average profiles for each  
18 category suggested a specific decrease of the distal  $\beta$ -tubulin peak in spike+ cells. This was confirmed by  
19 an analysis of the distal to proximal peak intensity ratio, which showed a significant decrease in spike+  
20 cells, as compared to spike- and mock cells (Fig. 3B). Thus, the density of cilia decreased at 2 dpi, supporting  
21 an early loss of cilia in infected cells. SEM imaging confirmed the presence of productively infected cells  
22 with only few remaining cilia on their apical surface (Fig. 3C), as opposed to the packed ciliary layer  
23 characteristic of intact ciliated cells (Fig. 1B). Some infected cells showed a lack of cilia and a massive  
24 accumulation of virions at the cell surface and on membrane ruffles (Fig. 3D), indicative of highly  
25 productive SARS-CoV-2 infection. Of note, viral particles were rarely observed along the length of ciliary  
26 sheaths. This observation was consistent with the distribution of spike staining, which formed a narrow  
27 band above the plasma membrane, but did not overlay the distal  $\beta$ -tubulin peak (Fig. 3A, spike+; Fig. S4A).  
28 In addition, spike and  $\beta$ -tubulin labeling showed minimal colocalization, as measured by Mander  
29 correlation coefficients (Fig. S4B-C). Thus, viral budding or accumulation did not take place in the cilium  
30 structure, suggesting that cilia destruction occurred through an indirect mechanism.

31

32 **SARS-CoV-2 infection induces ultrastructurally abnormal cilia**



1 SEM imaging performed at higher magnification revealed ultrastructural abnormalities in infected ciliated  
2 cells. Cilia were often shortened and misshapen (Fig. 4A-B) and sometimes showed crescent-shaped juxta-  
3 membrane regions (Fig. 4C). Viral particles present at the membrane were not symmetrical but rather  
4 pleiomorphic (Fig. 4D), consistent with studies suggesting that spike trimers adopt various orientations at  
5 the virion surface (Turonova et al., 2020). Transmission electron microscopy (TEM) was then used to  
6 examine the internal organization of cilia. Mock-infected epithelia revealed a typical "9+2" cilium  
7 structure, with peripheral microtubule doublets surrounding a central microtubule pair (Fig. S4D). These  
8 microtubules constituted elongated axonemes that emerged from basal bodies aligned perpendicular to  
9 the plasma membrane (Fig. 4E). The basal bodies were themselves anchored into the cytoplasm through  
10 striated rootlets (Fig. 4F). A striking disorganization of cilia structure was observed in SARS-CoV-2 infected  
11 cells, with fewer axonemes, and misoriented basal bodies that lined large vesicles, which themselves often  
12 contained viral-like particles (Fig. 4G and S4E). Isolated rootlets were also detected, suggesting a  
13 dissociation of ciliary components (Fig. S4G). The vesicles contained packed viral-like particles, but also  
14 larger particles that may have derived from engulfed basal bodies (Fig. 4H and S4E). Therefore, SARS-CoV-  
15 2 infection had a major impact on ciliary structure, by inducing axoneme loss and accumulation of  
16 mislocalized basal bodies.

17

### 18 **SARS-CoV-2 infection impairs mucociliary clearance**

19 We next examined the consequences of SARS-CoV-2 infection on ciliary function. To this goal, we  
20 deposited low density 30  $\mu\text{m}$ -sized polystyrene microbeads onto the apical surface of mock-treated or  
21 infected epithelia and tracked their movement in real time. These experiments were performed at 7 dpi,  
22 to allow sufficient reconstitution of the mucus layer after the infection step. We observed that beads  
23 deposited on mock-treated epithelia moved generally in the same direction, consistent with coordinated  
24 beating of the underlying cilia (Fig. 5A, 5C, and Supplemental Movie 1). In contrast, beads deposited on  
25 infected epithelia were mostly immobile or showed randomly-oriented limited movements, indicating an  
26 impairment of the mucociliary clearance function (Fig. 5B, 5D, and Supplemental Movie 2). Quantitation  
27 of velocities confirmed a highly significant decrease in bead clearance upon SARS-CoV-2 infection (mean:  
28 8.9  $\mu\text{m}/\text{s}$  in mock vs 1.5  $\mu\text{m}/\text{s}$  in infected epithelia;  $P < 0.0001$ ) (Fig. 5E). The straightness of tracks also  
29 decreased in infected epithelia (Fig. 5F;  $P < 0.0001$ ), suggesting a perturbation in the coordination of cilia  
30 movements. Thus, cilia alterations induced by SARS-CoV-2 infection were associated to a marked  
31 impairment in mucociliary transport.

32

## 1 **Epithelial defense mechanisms are triggered by SARS-CoV-2 infection**

2 Mucociliary transport was altered at 7 dpi, at a time when barrier integrity was already restored (Fig. 1).  
3 To better apprehend the process of epithelial regeneration, we analyzed the localization and morphology  
4 of basal cells at this time point. Confocal images showed that basal cells expressing cytokeratin-5 were  
5 typically flattened on the basement membrane of mock-treated epithelia, while they appeared raised  
6 through the thickness of the pseudo-stratified epithelium in infected samples (Fig. 6A). To quantify this  
7 phenomenon, we first generated elevation maps of the inserts that support the cultures, and used these  
8 to correct for local insert deformations (Fig. S5A). This approach enabled to precisely quantify the mean  
9 height of basal cells in the epithelia, which proved significantly higher in infected than non-infected  
10 samples (Fig. 6B-C). SEM imaging confirmed that basal cells adopted a more rounded morphology in  
11 infected epithelia (Fig. S5B). Thus, basal cells were mobilized at 7 dpi, which may contribute to the  
12 restoration of barrier integrity. However, they had not differentiated into ciliary cells at this stage, as  
13 attested by the persistence of deciliated areas (Fig. 2D) and the impairment in mucociliary clearance (Fig.  
14 5E).

15  
16 Epithelial interferon production provides another key defense mechanism, that can occur in the absence  
17 of immune cell infiltration, and thus represents one of the earliest antiviral response to respiratory viruses.  
18 We monitored the kinetics of type I (IFN- $\alpha$ , IFN- $\beta$ ) and type III (IFN- $\lambda$ ) interferon production in the  
19 supernatants of reconstituted epithelia. IFN- $\alpha$  remained undetectable (data not shown), using a high-  
20 sensitivity SIMOA assay with a limit of detection (LOD) of 2 fg/mL (Hadjadj et al., 2020). IFN- $\beta$  was  
21 minimally induced upon SARS-CoV-2 infection, with peak values of  $4.2 \pm 0.4$  pg/mL at 2 dpi in apical  
22 supernatants, and levels below the LOD ( $< 1.7$  pg/mL) in basal supernatants (Fig. 6D, left). In contrast, IFN-  
23  $\lambda$  induction showed a different kinetics, with limited induction in apical supernatants at 2 dpi, but  
24 persistent increase at 4 and 7 dpi, to reach relatively high concentrations in both the apical ( $501.3 \pm 81.8$   
25 pg/mL) and basal supernatants ( $343 \pm 106$  pg/mL) (Fig. 6D, right). Both IFN- $\beta$  and IFN- $\lambda$  production showed  
26 a degree of inter-sample variability, but were significantly induced as compared to mock-treated samples  
27 at 4 dpi (Fig. 6E). It remained striking, however, that viral replication already peaked at 2 dpi (Fig. 1E), while  
28 interferon production was minimal at this stage. Pretreatment of the reconstituted epithelia with  
29 exogenous IFN- $\beta$  or IFN- $\lambda$  prior to SARS-CoV-2 infection decreased viral RNA levels by 2 logs (Fig. 6F),  
30 pointing to the importance of the timing of IFN induction to achieve viral containment. Taken together,  
31 these findings documented the induction of epithelial defense mechanisms following SARS-CoV-2

1 infection, including basal cell mobilization and type III interferon induction. However, the kinetics of these  
2 responses appeared too slow in this model to prevent viral replication and functional impairment.

3

#### 4 **SARS-CoV-2 infection damages the ciliary layer in the respiratory tract of Syrian hamsters**

5 We next asked whether the ciliated airway epithelium is impacted by SARS-CoV-2 infection *in vivo*. We  
6 chose the golden Syrian hamster (*Mesocricetus auratus*) model, as this species is naturally susceptible to  
7 SARS-CoV-2 and shows lung lesions upon infection (Chan et al., 2020; Sia et al., 2020). Syrian hamsters  
8 were infected with  $6 \times 10^4$  pfu of SARS-CoV-2 via the intranasal route. The infected hamsters showed rapid  
9 body weight loss as compared to mock-infected controls (n=4 in each group; Fig. 7A). The animals were  
10 euthanized at 4 dpi, at a time when the infected group showed a high viral load in the trachea (Fig. 7B).  
11 SEM imaging showed that cilia occupied almost half of the epithelial surface in the trachea of control  
12 animals (Fig. 7C, left). A marked cilia loss occurred in the trachea of infected animals (Fig. 7C, right), as  
13 confirmed by image analysis (median of ciliated area: 2.5% in SARS-CoV-2+ vs 45.4% in Mock, P=0.0079)  
14 (Fig. 7D). Immunofluorescence labeling of trachea sections confirmed a partial to complete loss of the  
15 ciliated layer at 4 dpi, with a mobilization of basal cells towards the luminal side of the epithelium (Fig. 7E).  
16 The SARS-CoV-2 spike antigen could be detected in a few remaining ciliated cells (Fig. S6). Therefore, SARS-  
17 CoV-2 infected and damaged the epithelial ciliary layer in a physiologically relevant animal model.

18

19

#### 20 **DISCUSSION**

21 We report here that SARS-CoV-2 preferentially replicates in ciliated cells, damages the ciliary layer, and  
22 impairs mucociliary clearance in a reconstituted human bronchial epithelium model. We also  
23 demonstrate, in the SARS-CoV-2 susceptible hamster model, a loss of motile cilia in the trachea of infected  
24 animals. Thus, SARS-CoV-2 specifically damaged airway motile cilia, both *in vivo* and *in vitro*. Our findings  
25 suggest that cilia loss may also play a role in COVID-19 pathogenesis, as a localized clearance impairment  
26 at the site of SARS-CoV-2 replication could facilitate viral spread within the airways. Decreased cilia  
27 movement could slow the transport of released virions towards the pharynx and facilitate viral access to  
28 deeper regions of the bronchial tree. This process could self-perpetuate, with cycles of localized cilia  
29 destruction facilitating SARS-CoV-2 progression towards increasingly more distal regions, until the virus  
30 reaches the alveoli and triggers pneumocyte damage.

31

1 We did not observe major discontinuities in the tracheal epithelium of infected hamsters. Continuity of  
2 the epithelial layer was not disrupted in the *in vitro* model either, as confirmed by the minimal release of  
3 viral particles in the basal compartment. A degree of cytotoxicity was measured by LDH release, but the  
4 observation of extruded dead cells remained occasional. Epithelial barrier function was impaired at day 4,  
5 as documented by decreased transepithelial resistance, increased permeability, and altered distribution  
6 of the tight junction protein ZO-1. However, this functional impairment remained transient, with signs of  
7 epithelial regeneration such as basal cell mobilization observed at day 7. Our results indicate that SARS-  
8 CoV-2 replication has a drastic effect on the ciliary layer while exerting a moderate effect on epithelial  
9 barrier integrity. This is in contrast to other respiratory viruses such as influenza A virus (IAV), which  
10 induces widespread epithelial cell death and persistent loss of epithelial barrier function (Essaidi-Laziosi et  
11 al., 2018). Respiratory viruses use distinct strategies that all converge in limiting mucociliary clearance,  
12 including motile cilia loss (this study)(Look et al., 2001), epithelial disruption (Essaidi-Laziosi et al., 2018;  
13 Villenave et al., 2010), and altered ciliary movements (Essaidi-Laziosi et al., 2018; Smith et al., 2014).  
14 Experimental impairment of ciliary movements through chemical treatment also increased IAV infection  
15 *in vitro* (Fu et al., 2018), providing further evidence that decreasing mucociliary clearance can facilitate  
16 viral infection.

17  
18 The role of mucociliary clearance in limiting respiratory bacterial infections is also well documented (Gudis  
19 et al., 2012), and supported by the recurrence of severe pulmonary infections in patients with inborn  
20 errors in genes essential to motile cilia function (Shapiro et al., 2016). The percentage of COVID-19 patients  
21 presenting with a bacterial or fungal respiratory co-infection at hospital admission remains moderate  
22 (Garcia-Vidal et al., 2020; Rawson et al., 2020). However, the occurrence of secondary infections increases  
23 in critically-ill COVID-19 patients, in spite of common broad-spectrum antibiotic prophylaxis. One fourth  
24 to one third of severe COVID-19 patients experience secondary bacterial or fungal superinfections (Alanio  
25 et al., 2020; Manohar et al., 2020; White et al., 2020). Secondary infections are associated with worse  
26 outcomes (Garcia-Vidal et al., 2020; Manohar et al., 2020), emphasizing the possible effect of impaired  
27 mucociliary clearance on the risk of severe COVID.

28  
29 Ultrastructural analysis by SEM revealed a loss of motile cilia in productively infected human bronchial  
30 cells. Misshapen and shortened cilia were also detected, reminiscent of abnormalities observed in certain  
31 cases of primary ciliopathies (Shah et al., 2008; Tilley et al., 2015). We documented by  
32 immunofluorescence a thinning of the ciliary layer as early as 2 dpi, associated to a layer of viral spike

1 protein at the base of motile cilia. SARS-CoV-2 particles did not bud from cilia, but rather from deciliated  
2 areas, as indicated by the minimal colocalization between the spike and  $\beta$ -tubulin markers. Clusters of viral  
3 particles could be detected on microvilli, consistent with findings suggesting that SARS-CoV-2 could induce  
4 the formation of actin-based filaments in transformed cells (Bouhaddou et al., 2020). The absence of viral  
5 particles within cilia may result from the restricted protein access imposed by the transition zone at the  
6 base of motile cilia (Nachury and Mick, 2019). Access of cellular proteins into the ciliary axoneme is limited  
7 to those bound by the intraflagellar transport machinery, which likely prevents the import of viral proteins.  
8 Therefore, the destruction of motile cilia by SARS-CoV-2 seems mediated by an indirect mechanism, rather  
9 than by direct viral production within these structures. TEM imaging revealed the presence of misoriented  
10 basal bodies that had lost plasma membrane docking in productively infected cells. The ciliary axoneme is  
11 normally maintained through a dynamic equilibrium between microtubule  
12 polymerization/depolymerization, in turn regulated by the supply of ciliary components by intraflagellar  
13 transport (Lechtreck et al., 2017). Our observations in infected cells suggest a disequilibrium favoring  
14 depolymerization, leading to loss of ciliary axonemes. Rootlets, which normally anchor basal bodies into  
15 the cytoplasm, were sometimes found isolated, suggesting that basal bodies may themselves detach  
16 and/or depolymerize. It is relevant that RNAseq studies of SARS-CoV-2 infected epithelial cell cultures  
17 (Nunnari et al., 2020; Ravindra et al., 2020) and of mucosal samples from COVID-19 patients (He et al.,  
18 2020) reported a downregulation of transcripts involved in cilia function, such as dyneins, supporting the  
19 idea of a virally-induced dedifferentiation of ciliated cells. Future work will help decipher the step at which  
20 SARS-CoV-2 impairs the production, stability, or transport of ciliary components.

21  
22 SARS-CoV-2 infection also induced a significant IFN response, that was primarily driven by type III IFN. IFN-  
23  $\lambda$  was abundantly secreted at 4 dpi in the apical and basal compartments of infected reconstituted  
24 epithelia. In contrast, IFN- $\beta$  secretion was minimal in the apical compartment and undetectable in the  
25 basal compartment. IFN- $\alpha$  secretion remained undetectable in both compartments, even though we used  
26 a high-sensitivity Simoa digital ELISA for detection. These observations fit with the notion that type III IFN  
27 is the dominant antiviral cytokine in epithelia, enabling a localized response mediated directly by epithelial  
28 cells, prior to the infiltration of immune cells (Park and Iwasaki, 2020). It was noteworthy, however, that  
29 IFN was secreted mostly from day 4 post-infection onward, while viral RNA production had already shown  
30 a 2 log increase by day 2. This delay in the induction of the antiviral response suggests a "too little too late"  
31 scenario, where antiviral mechanisms are overwhelmed and subverted by active viral replication. Our  
32 findings are compatible with studies showing a limited and/or delayed IFN induction by SARS-CoV-2 as

1 compared to other respiratory viruses, in primary epithelial cells from the airways and the intestine  
2 (Blanco-Melo et al., 2020; Lamers et al., 2020; V'kovski et al., 2020; Vanderheiden et al., 2020).

3  
4 These results do not rule out the potential for IFN treatment, as IFN may still exert an antiviral effect if  
5 administered early. We observed that pretreatment with IFN- $\beta$  or IFN- $\lambda$  markedly decreased SARS-CoV-2  
6 replication in our reconstituted bronchial epithelium model. These findings are in agreement with studies  
7 in various culture systems documenting the inhibitory effect of both type I and type III IFN on SARS-CoV-2  
8 replication, when treatment occurs prior to the stage of massive viral replication (Felgenhauer et al., 2020;  
9 Mantlo et al., 2020; Stanifer et al., 2020; V'kovski et al., 2020; Vanderheiden et al., 2020). However, studies  
10 in animal models suggest that, at an advanced stage of infection, IFN may contribute to the decline of  
11 respiratory function, possibly by worsening inflammation (Boudewijns et al., 2020) and impairing epithelial  
12 cell regeneration (Broggi et al., 2020; Major et al., 2020). Therefore, the window of opportunity for IFN  
13 treatment may have to be carefully defined in randomized controlled trials.

14  
15 In conclusion, we demonstrate that SARS-CoV-2 induces a rapid loss of the ciliary layer in airway epithelial  
16 cells, resulting in impaired mucociliary clearance. Infected cells display ultrastructurally altered motile cilia,  
17 characterized by misshapen or absent axonemes. Intrinsic epithelial defense mechanisms likely occur too  
18 late to prevent cilia loss. These findings highlight a pathogenic mechanism that may promote viral spread  
19 in the respiratory tree and increase the risk of secondary infections in COVID-19 patients.

20

21

22

## 23 **ACKNOWLEDGEMENTS**

24 We thank Charlotte Calvet for help with sample preparation for scanning electron microscopy, Sylvie Van  
25 der Werf for the SARS-CoV-2 isolate used in this study, and Nicolas Escriou for the gift of a SARS-CoV-2  
26 spike antibody.

27

28 This work was supported by : Institut Pasteur TASK FORCE SARS COV2 (Tropicoro project), DIM ELICIT  
29 Region Ile-de-France, and ANRS (L.A.C.); the Vaccine Research Institute (ANR-10-LABX-77), ANRS, Labex  
30 IBEID (ANR-10-LABX-62-IBEID), "TIMTAMDEN" ANR-14-CE14-0029, "CHIKV-Viro-Immuno" ANR-14-CE14-  
31 0015-01, the Gilead HIV cure program, ANR/FRM Flash Covid PROTEO-SARS-CoV-2 and IDISCOVER (O.S.);  
32 Institut Pasteur TASK FORCE SARS COV2 and ANR Flash Covid CoVarImm (D.D.); Institut Pasteur TASK

1 FORCE SARS COV2 (Neuro-Covid project) (H.B.). The Lledo's lab is supported by the life insurance company  
2 "AG2R-La-Mondiale". The UtechS Photonic BioImaging (Imagopole) and the UtechS Ultrastructural  
3 BioImaging (UBI) are supported by the French National Research Agency (France BioImaging; ANR-10-  
4 INSB-04; Investments for the Future). R.R. is the recipient of a Sidaction fellowship, N.S. of a Pasteur-Roux-  
5 Cantarini fellowship, and St.G. of a MESR/Ecole Doctorale B3MI, Paris 7 University fellowship. S.L. is  
6 supported by FRM (fellowship ECO201906009119) and by "Ecole Doctorale FIRE – Programme  
7 Bettencourt".

8

## 9 **AUTHOR CONTRIBUTIONS**

10 R.R., M.H., Sa.G., P.M.L., M.L., H.B., D.D., V.M., O.S., and L.A.C. designed the project  
11 R.R., M.H., G.D.d.M., F.L.S., T.B., N.S., S.L., F.L., J.F., St.G., O.G., C.T., F.G.B., and V.M. performed  
12 experiments  
13 R.R., T.B., J.F., S.R., C.T., A.M., G.D., R.E., and L.A.C. contributed to image analysis  
14 R.R., M.H., V.M., O.S., and L.A.C. wrote the manuscript  
15 All authors reviewed and approved the manuscript.

16

## 17 **DECLARATION OF INTERESTS**

18 The authors declare that they have no competing interests.

19

20

21

## 22 **REFERENCES**

23

- 24 Aigouy, B., Farhadifar, R., Staple, D.B., Sagner, A., Röper, J.C., Jülicher, F., and Eaton, S. (2010). Cell flow  
25 reorients the axis of planar polarity in the wing epithelium of *Drosophila*. *Cell* *142*, 773-786.
- 26 Alanio, A., Dellière, S., Fodil, S., Bretagne, S., and Mégarbane, B. (2020). Prevalence of putative invasive  
27 pulmonary aspergillosis in critically ill patients with COVID-19. *The Lancet Respiratory medicine* *8*, e48-  
28 e49.
- 29 Blanco-Melo, D., Nilsson-Payant, B.E., Liu, W.-C., Uhl, S., Hoagland, D., Moller, R., Jordan, T.X., Oishi, K.,  
30 Panis, M., Sachs, D., *et al.* (2020). Imbalanced Host Response to SARS-CoV-2 Drives Development of COVID-  
31 19. *Cell*.
- 32 Boudewijns, R., Thibaut, H.J., Kaptein, S.J.F., Li, R., Vergote, V., Seldeslachts, L., De Keyzer, C., Bervoets, L.,  
33 Sharma, S., Van Weyenbergh, J., *et al.* (2020). STAT2 signaling as double-edged sword restricting viral  
34 dissemination but driving severe pneumonia in SARS-CoV-2 infected hamsters. *bioRxiv*,  
35 2020.2004.2023.056838.

- 1 Bouhaddou, M., Memon, D., Meyer, B., White, K.M., Rezelj, V.V., Correa Marrero, M., Polacco, B.J.,  
2 Melnyk, J.E., Ulferts, S., Kaake, R.M., *et al.* (2020). The Global Phosphorylation Landscape of SARS-CoV-2  
3 Infection. *Cell* *182*, 685-712 e619.
- 4 Broggi, A., Ghosh, S., Sposito, B., Spreafico, R., Balzarini, F., Lo Cascio, A., Clementi, N., De Santis, M.,  
5 Mancini, N., Granucci, F., *et al.* (2020). Type III interferons disrupt the lung epithelial barrier upon viral  
6 recognition. *Science*.
- 7 Chan, J.F., Zhang, A.J., Yuan, S., Poon, V.K., Chan, C.C., Lee, A.C., Chan, W.M., Fan, Z., Tsoi, H.W., Wen, L.,  
8 *et al.* (2020). Simulation of the clinical and pathological manifestations of Coronavirus Disease 2019  
9 (COVID-19) in golden Syrian hamster model: implications for disease pathogenesis and transmissibility.  
10 *Clin Infect Dis*.
- 11 Essaidi-Laziosi, M., Brito, F., Benaoudia, S., Royston, L., Cagno, V., Fernandes-Rocha, M., Piuze, I., Zdobnov,  
12 E., Huang, S., Constant, S., *et al.* (2018). Propagation of respiratory viruses in human airway epithelia  
13 reveals persistent virus-specific signatures. *J Allergy Clin Immunol* *141*, 2074-2084.
- 14 Farhadifar, R., Röper, J.C., Aigouy, B., Eaton, S., and Jülicher, F. (2007). The influence of cell mechanics,  
15 cell-cell interactions, and proliferation on epithelial packing. *Curr Biol* *17*, 2095-2104.
- 16 Felgenhauer, U., Schoen, A., Gad, H.H., Hartmann, R., Schaubmar, A.R., Failing, K., Drosten, C., and Weber,  
17 F. (2020). Inhibition of SARS-CoV-2 by type I and type III interferons. *J Biol Chem*.
- 18 Fu, Y., Tong, J., Meng, F., Hoeltig, D., Liu, G., Yin, X., and Herrler, G. (2018). Ciliostasis of airway epithelial  
19 cells facilitates influenza A virus infection. *Vet Res* *49*, 65.
- 20 Garcia-Vidal, C., Sanjuan, G., Moreno-García, E., Puerta-Alcalde, P., Garcia-Pouton, N., Chumbita, M.,  
21 Fernandez-Pittol, M., Pitart, C., Inciarte, A., Bodro, M., *et al.* (2020). Incidence of co-infections and  
22 superinfections in hospitalised patients with COVID-19: a retrospective cohort study. *Clin Microbiol Infect*.
- 23 Guan, W.J., Ni, Z.Y., Hu, Y., Liang, W.H., Ou, C.Q., He, J.X., Liu, L., Shan, H., Lei, C.L., Hui, D.S.C., *et al.* (2020).  
24 Clinical Characteristics of Coronavirus Disease 2019 in China. *N Engl J Med*.
- 25 Gudis, D., Zhao, K.Q., and Cohen, N.A. (2012). Acquired cilia dysfunction in chronic rhinosinusitis. *Am J*  
26 *Rhinol Allergy* *26*, 1-6.
- 27 Hadjadj, J., Yatim, N., Barnabei, L., Corneau, A., Boussier, J., Smith, N., Pere, H., Charbit, B., Bondet, V.,  
28 Chenevier-Gobeaux, C., *et al.* (2020). Impaired type I interferon activity and inflammatory responses in  
29 severe COVID-19 patients. *Science*.
- 30 He, J., Cai, S., Feng, H., Cai, B., Lin, L., Mai, Y., Fan, Y., Zhu, A., Huang, H., Shi, J., *et al.* (2020). Single-cell  
31 analysis reveals bronchoalveolar epithelial dysfunction in COVID-19 patients. *Protein Cell*.
- 32 Hoffmann, M., Kleine-Weber, H., Schroeder, S., Kruger, N., Herrler, T., Erichsen, S., Schiergens, T.S., Herrler,  
33 G., Wu, N.H., Nitsche, A., *et al.* (2020). SARS-CoV-2 Cell Entry Depends on ACE2 and TMPRSS2 and Is  
34 Blocked by a Clinically Proven Protease Inhibitor. *Cell*.
- 35 Hou, Y.J., Okuda, K., Edwards, C.E., Martinez, D.R., Asakura, T., Dinnon, K.H., 3rd, Kato, T., Lee, R.E., Yount,  
36 B.L., Mascenik, T.M., *et al.* (2020). SARS-CoV-2 Reverse Genetics Reveals a Variable Infection Gradient in  
37 the Respiratory Tract. *Cell*.
- 38 Huang, C., Wang, Y., Li, X., Ren, L., Zhao, J., Hu, Y., Zhang, L., Fan, G., Xu, J., Gu, X., *et al.* (2020). Clinical  
39 features of patients infected with 2019 novel coronavirus in Wuhan, China. *Lancet* *395*, 497-506.
- 40 Hui, K.P.Y., Cheung, M.-C., Perera, R.A.P.M., Ng, K.-C., Bui, C.H.T., Ho, J.C.W., Ng, M.M.T., Kuok, D.I.T., Shih,  
41 K.C., Tsao, S.-W., *et al.* (2020). Tropism, replication competence, and innate immune responses of the



- 1 coronavirus SARS-CoV-2 in human respiratory tract and conjunctiva: an analysis in ex-vivo and in-vitro  
2 cultures. *The Lancet Respiratory medicine*.
- 3 Lamers, M.M., Beumer, J., van der Vaart, J., Knoops, K., Puschhof, J., Breugem, T.I., Ravelli, R.B.G., Paul van  
4 Schayck, J., Mykytyn, A.Z., Duimel, H.Q., *et al.* (2020). SARS-CoV-2 productively infects human gut  
5 enterocytes. *Science*.
- 6 Lechtreck, K.F., Van De Weghe, J.C., Harris, J.A., and Liu, P. (2017). Protein transport in growing and steady-  
7 state cilia. *Traffic* *18*, 277-286.
- 8 Liao, M., Liu, Y., Yuan, J., Wen, Y., Xu, G., Zhao, J., Cheng, L., Li, J., Wang, X., Wang, F., *et al.* (2020). Single-  
9 cell landscape of bronchoalveolar immune cells in patients with COVID-19. *Nat Med*.
- 10 Look, D.C., Walter, M.J., Williamson, M.R., Pang, L., You, Y., Sreshta, J.N., Johnson, J.E., Zander, D.S., and  
11 Brody, S.L. (2001). Effects of paramyxoviral infection on airway epithelial cell Foxj1 expression, ciliogenesis,  
12 and mucociliary function. *Am J Pathol* *159*, 2055-2069.
- 13 Lu, R., Zhao, X., Li, J., Niu, P., Yang, B., Wu, H., Wang, W., Song, H., Huang, B., Zhu, N., *et al.* (2020). Genomic  
14 characterisation and epidemiology of 2019 novel coronavirus: implications for virus origins and receptor  
15 binding. *Lancet* *395*, 565-574.
- 16 Major, J., Crotta, S., Llorian, M., McCabe, T.M., Gad, H.H., Priestnall, S.L., Hartmann, R., and Wack, A.  
17 (2020). Type I and III interferons disrupt lung epithelial repair during recovery from viral infection. *Science*.
- 18 Manohar, P., Loh, B., Nachimuthu, R., Hua, X., Welburn, S.C., and Leptihn, S. (2020). Secondary Bacterial  
19 Infections in Patients With Viral Pneumonia. *Front Med (Lausanne)* *7*, 420.
- 20 Mantlo, E., Bukreyeva, N., Maruyama, J., Paessler, S., and Huang, C. (2020). Antiviral activities of type I  
21 interferons to SARS-CoV-2 infection. *Antiviral Res*.
- 22 Mulay, A., Konda, B., Garcia, G., Yao, C., Beil, S., Sen, C., Purkayastha, A., Kolls, J.K., Pociask, D.A., Pessina,  
23 P., *et al.* (2020). SARS-CoV-2 infection of primary human lung epithelium for COVID-19 modeling and drug  
24 discovery. *bioRxiv*.
- 25 Nachury, M.V., and Mick, D.U. (2019). Establishing and regulating the composition of cilia for signal  
26 transduction. *Nat Rev Mol Cell Biol* *20*, 389-405.
- 27 Nunnari, G., Sanfilippo, C., Castrogiovanni, P., Imbesi, R., Volti, G.L., Barbagallo, I., Musumeci, G., and Di  
28 Rosa, M. (2020). Network perturbation analysis in human bronchial epithelial cells following SARS-CoV2  
29 infection. *Exp Cell Res* *395*, 112204.
- 30 Park, A., and Iwasaki, A. (2020). Type I and Type III Interferons - Induction, Signaling, Evasion, and  
31 Application to Combat COVID-19. *Cell Host Microbe*.
- 32 Peiris, J.S., Chu, C.M., Cheng, V.C., Chan, K.S., Hung, I.F., Poon, L.L., Law, K.I., Tang, B.S., Hon, T.Y., Chan,  
33 C.S., *et al.* (2003). Clinical progression and viral load in a community outbreak of coronavirus-associated  
34 SARS pneumonia: a prospective study. *Lancet* *361*, 1767-1772.
- 35 Petersen, E., Koopmans, M., Go, U., Hamer, D.H., Petrosillo, N., Castelli, F., Storgaard, M., Al Khalili, S., and  
36 Simonsen, L. (2020). Comparing SARS-CoV-2 with SARS-CoV and influenza pandemics. *Lancet Infect Dis*.
- 37 Pizzorno, A., Padey, B., Dubois, J., Julien, T., Traversier, A., Dulière, V., Brun, P., Lina, B., Rosa-Calatrava,  
38 M., and Terrier, O. (2020). In vitro evaluation of antiviral activity of single and combined repurposable  
39 drugs against SARS-CoV-2. *Antiviral Res*, 104878.

- 1 Ravindra, N.G., Alfajaro, M.M., Gasque, V., Habet, V., Wei, J., Filler, R.B., Huston, N.C., Wan, H., Szigeti-  
2 Buck, K., Wang, B., *et al.* (2020). Single-cell longitudinal analysis of SARS-CoV-2 infection in human airway  
3 epithelium. *bioRxiv*, 2020.2005.2006.081695.
- 4 Rawson, T.M., Moore, L.S.P., Zhu, N., Ranganathan, N., Skolimowska, K., Gilchrist, M., Satta, G., Cooke, G.,  
5 and Holmes, A. (2020). Bacterial and fungal co-infection in individuals with coronavirus: A rapid review to  
6 support COVID-19 antimicrobial prescribing. *Clin Infect Dis*.
- 7 Shah, A.S., Farmen, S.L., Moninger, T.O., Businga, T.R., Andrews, M.P., Bugge, K., Searby, C.C., Nishimura,  
8 D., Brogden, K.A., Kline, J.N., *et al.* (2008). Loss of Bardet-Biedl syndrome proteins alters the morphology  
9 and function of motile cilia in airway epithelia. *Proc Natl Acad Sci U S A* *105*, 3380-3385.
- 10 Shapiro, A.J., Zariwala, M.A., Ferkol, T., Davis, S.D., Sagel, S.D., Dell, S.D., Rosenfeld, M., Olivier, K.N., Milla,  
11 C., Daniel, S.J., *et al.* (2016). Diagnosis, monitoring, and treatment of primary ciliary dyskinesia: PCD  
12 foundation consensus recommendations based on state of the art review. *Pediatr Pulmonol* *51*, 115-132.
- 13 Sia, S.F., Yan, L.-M., Chin, A.W.H., Fung, K., Choy, K.-T., Wong, A.Y.L., Kaewpreedee, P., Perera, R.A.P.M.,  
14 Poon, L.L.M., Nicholls, J.M., *et al.* (2020). Pathogenesis and transmission of SARS-CoV-2 in golden  
15 hamsters. *Nature*.
- 16 Smith, C.M., Kulkarni, H., Radhakrishnan, P., Rutman, A., Bankart, M.J., Williams, G., Hirst, R.A., Easton,  
17 A.J., Andrew, P.W., and O'Callaghan, C. (2014). Ciliary dyskinesia is an early feature of respiratory syncytial  
18 virus infection. *Eur Respir J* *43*, 485-496.
- 19 Spassky, N., and Meunier, A. (2017). The development and functions of multiciliated epithelia. *Nat Rev*  
20 *Mol Cell Biol* *18*, 423-436.
- 21 Stanifer, M.L., Kee, C., Cortese, M., Zumaran, C.M., Triana, S., Mukenhirn, M., Kraeusslich, H.-G.,  
22 Alexandrov, T., Bartenschlager, R., and Boulant, S. (2020). Critical Role of Type III Interferon in Controlling  
23 SARS-CoV-2 Infection in Human Intestinal Epithelial Cells. *Cell Rep*.
- 24 Tian, S., Xiong, Y., Liu, H., Niu, L., Guo, J., Liao, M., and Xiao, S.-Y. (2020). Pathological study of the 2019  
25 novel coronavirus disease (COVID-19) through postmortem core biopsies. *Mod Pathol*.
- 26 Tilley, A.E., Walters, M.S., Shaykhiev, R., and Crystal, R.G. (2015). Cilia dysfunction in lung disease. *Annu*  
27 *Rev Physiol* *77*, 379-406.
- 28 Turonova, B., Sikora, M., Schurmann, C., Hagen, W.J.H., Welsch, S., Blanc, F.E.C., von Bulow, S., Gecht, M.,  
29 Bagola, K., Horner, C., *et al.* (2020). In situ structural analysis of SARS-CoV-2 spike reveals flexibility  
30 mediated by three hinges. *Science*.
- 31 V'kovski, P., Gultom, M., Steiner, S., Kelly, J., Russeil, J., Mangeat, B., Cora, E., Pezoldt, J., Holwerda, M.,  
32 Kratzel, A., *et al.* (2020). Disparate temperature-dependent virus – host dynamics for SARS-CoV-2 and  
33 SARS-CoV in the human respiratory epithelium. *bioRxiv*, 2020.2004.2027.062315.
- 34 Vanderheiden, A., Ralfs, P., Chirkova, T., Upadhyay, A.A., Zimmerman, M.G., Bedoya, S., Aoued, H., Tharp,  
35 G.M., Pellegrini, K.L., Manfredi, C., *et al.* (2020). Type I and Type III IFN Restrict SARS-CoV-2 Infection of  
36 Human Airway Epithelial Cultures. *J Virol*.
- 37 Villenave, R., Touzelet, O., Thavagnanam, S., Sarlang, S., Parker, J., Skibinski, G., Heaney, L.G., McKaigue,  
38 J.P., Coyle, P.V., Shields, M.D., *et al.* (2010). Cytopathogenesis of Sendai virus in well-differentiated primary  
39 pediatric bronchial epithelial cells. *J Virol* *84*, 11718-11728.
- 40 White, P.L., Dhillon, R., Cordey, A., Hughes, H., Faggian, F., Soni, S., Pandey, M., Whitaker, H., May, A.,  
41 Morgan, M., *et al.* (2020). A national strategy to diagnose COVID-19 associated invasive fungal disease in  
42 the ICU. *Clin Infect Dis*.

- 1 Wolfel, R., Corman, V.M., Guggemos, W., Seilmaier, M., Zange, S., Muller, M.A., Niemeyer, D., Jones, T.C.,  
2 Vollmar, P., Rothe, C., *et al.* (2020). Virological assessment of hospitalized patients with COVID-2019.  
3 *Nature*.
- 4 Xu, Z., Shi, L., Wang, Y., Zhang, J., Huang, L., Zhang, C., Liu, S., Zhao, P., Liu, H., Zhu, L., *et al.* (2020).  
5 Pathological findings of COVID-19 associated with acute respiratory distress syndrome. *The Lancet*  
6 *Respiratory medicine*.
- 7 Yao, X.-H., He, Z.-C., Li, T.-Y., Zhang, H.-R., Wang, Y., Mou, H., Guo, Q., Yu, S.-C., Ding, Y., Liu, X., *et al.* (2020).  
8 Pathological evidence for residual SARS-CoV-2 in pulmonary tissues of a ready-for-discharge patient. *Cell*  
9 *Res*.
- 10 Zhou, F., Yu, T., Du, R., Fan, G., Liu, Y., Liu, Z., Xiang, J., Wang, Y., Song, B., Gu, X., *et al.* (2020a). Clinical  
11 course and risk factors for mortality of adult inpatients with COVID-19 in Wuhan, China: a retrospective  
12 cohort study. *Lancet* *395*, 1054-1062.
- 13 Zhou, P., Yang, X.L., Wang, X.G., Hu, B., Zhang, L., Zhang, W., Si, H.R., Zhu, Y., Li, B., Huang, C.L., *et al.*  
14 (2020b). A pneumonia outbreak associated with a new coronavirus of probable bat origin. *Nature* *579*,  
15 270-273.
- 16 Zhu, N., Wang, W., Liu, Z., Liang, C., Wang, W., Ye, F., Huang, B., Zhao, L., Wang, H., Zhou, W., *et al.* (2020a).  
17 Morphogenesis and cytopathic effect of SARS-CoV-2 infection in human airway epithelial cells. *Nat*  
18 *Commun* *11*, 3910.
- 19 Zhu, N., Zhang, D., Wang, W., Li, X., Yang, B., Song, J., Zhao, X., Huang, B., Shi, W., Lu, R., *et al.* (2020b). A  
20 Novel Coronavirus from Patients with Pneumonia in China, 2019. *N Engl J Med* *382*, 727-733.
- 21 Zou, L., Ruan, F., Huang, M., Liang, L., Huang, H., Hong, Z., Yu, J., Kang, M., Song, Y., Xia, J., *et al.* (2020).  
22 SARS-CoV-2 Viral Load in Upper Respiratory Specimens of Infected Patients. *N Engl J Med* *382*, 1177-1179.

23

24

25

26

1 **LEGENDS TO THE FIGURES**

2

3 **Figure 1: SARS-Cov-2 infection transiently impairs epithelial barrier function in a reconstituted human**  
4 **bronchial epithelium**

5 **(A)** Schematic view of an Air/Liquid Interface (ALI) culture of a reconstituted human bronchial epithelium  
6 comprising three cell types: ciliated, goblet, and basal cells.

7 **(B)** SEM imaging of the three cell types, with a ciliated and a goblet cell (left panel; arrowhead: mucus  
8 granule) and a basal cell (right panel).

9 **(C-D)** SARS-CoV-2 viral load quantification in apical (C) and basal (D) culture supernatants by RT-qPCR, for  
10  $n \geq 4$  independent experiments (mean $\pm$ SD).

11 **(E)** Infectious SARS-CoV-2 particles production quantified by TCID<sub>50</sub> on Vero cells ( $n \geq 5$  replicates from 2  
12 independent experiments; mean $\pm$ SD).

13 **(F)** Visualization of tight junctions (ZO-1) and infection (SARS-CoV-2 spike) by immunofluorescence at 2,  
14 4, and 7 dpi.

15 **(G-J)** Assessment of epithelium barrier function: Trans-Epithelial Electric Resistance (TEER) (G, H) and  
16 paracellular permeability for dextran-FITC (I, J). (G) and (I) show representative experiments, while (H)  
17 and (J) show pooled results at 4 dpi ( $n=4$  and  $n=3$  independent experiments, respectively). Median values  
18 were compared with Mann-Whitney tests.

19

20 **Figure 2: SARS-CoV-2 preferentially targets ciliated cells and damages the ciliary layer**

21 **(A-B)** Confocal imaging of a SARS-CoV-2 infected epithelium at 2 dpi (A, top view) and of control (Mock)  
22 and infected epithelia at 4 dpi (B, orthogonal views). Ciliated cells are labeled for  $\beta$ -tubulin IV, basal cells  
23 for cytokeratin-5, nuclei for DNA (Hoechst), and infected cells for the SARS-CoV-2 spike.

24 **(C-D)** Representative images of the  $\beta$ -tubulin layer at 4 dpi (C) and corresponding image analysis (D) ( $n=3$   
25 independent experiments; Mann-Whitney test).

26 **(E-F)** SEM imaging of mock infected (E) and SARS-CoV-2 infected (F) reconstituted epithelia at 4 dpi.

27

28 **Figure 3: SARS-CoV-2 infection causes an early loss of motile cilia**

29 **(A)** Distribution of  $\beta$ -tubulin IV and SARS-CoV-2 spike immunofluorescence (IF) labeling at 2 dpi.

30 Representative IF images projected on the Z (depth) axis are shown next to averaged profiles of  $\beta$ -tubulin  
31 intensities. Profiles were measured along the Z axis for  $n \geq 70$  cells (mean $\pm$ SD) from uninfected (mock)  
32 and infected (spike+, spike-) epithelia.

- 1 **(B)** Ratio of  $\beta$ -tubulin distal to proximal peak intensities for 3 cell categories.  
2 **(C)** SEM image of an infected cell at 2 dpi with few remaining cilia (left) and scattered viral particles (vp)  
3 at the plasma membrane (right).  
4 **(D)** SEM image of a massively infected cell at 2 dpi (left) with an accumulation of vp at the surface of  
5 membrane ruffles (right). (C, D) Framed regions in left panels are enlarged in right panels.

6  
7 **Figure 4: SARS-CoV-2 infection induces ultrastructurally abnormal cilia**

- 8 **(A-C)** SEM images of infected cells at 2 dpi showing cilia abnormalities, including cilia loss and shortened  
9 cilia (A; enlarged in B), and cilia with crescent-shaped proximal axonemes (C).  
10 **(D)** SEM image of SARS-CoV-2 viral particles.  
11 **(E-H)** TEM images of mock (E-F) and infected (G-H) ciliated cells at 4 dpi. bb: basal body; ax: axoneme; rt:  
12 rootlet; vp: viral particles; lp: large particle.

13  
14 **Figure 5: SARS-CoV-2 infection impairs mucociliary clearance**

- 15 **(A-B)** Representative examples of bead tracking on mock (A) and infected (B) epithelia at 7 dpi. Bead  
16 speed is color-coded in each track.  
17 **(C-D)** Vector representation of tracks from (A) and (B) showing bead speed and direction. A low bead  
18 speed is observed in infected epithelia (D, left), with an enlarged view showing non-uniform directions  
19 (D, right).  
20 **(E-F)** Bead mean speed (E) and track straightness (F) measured in mock and infected epithelia at 7 dpi  
21 (n=3 independent experiments; Mann Whitney tests).

22  
23 **Figure 6: SARS-CoV-2 infection triggers epithelial defense mechanisms: basal cell mobilization and**  
24 **interferon induction**

- 25 **(A)** Representative confocal images from mock and infected epithelia obtained at 7 dpi and used for  
26 quantification of basal cell (cytokeratin-5+) position along the Z axis.  
27 **(B-C)** Quantification of the cytokeratin-5 density profile along the Z axis. (B) The mean density +/- SD of  
28 n=9 images in each group is shown. (C) Comparison area under the curves shown in (B) with a Welch t-  
29 test.  
30 **(D)** Kinetics of IFN- $\beta$  (left) and IFN- $\lambda$  (right) production in apical and basal supernatants of mock and  
31 infected epithelia (n=2 independent experiments).

1 **(E)** Quantification of interferon production in apical supernatants at 4 dpi (n=4 independent  
2 experiments; Mann Whitney test).

3 **(F)** Effect of interferon pretreatment on SARS-CoV-2 replication in reconstituted epithelia. Viral RNA  
4 copies were quantified in apical supernatants by qRT-PCR (one representative experiment).

5

6 **Figure 7: SARS-CoV-2 damages the ciliary layer in the respiratory tract of Syrian hamsters**

7 **(A)** Effect of intranasal SARS-CoV-2 infection on hamster body weight (n=4 per group).

8 **(B)** SARS-CoV-2 viral load measured at 4 dpi in hamster trachea by RT-qPCR (n=4 per group).

9 **(C)** SEM images of tracheal epithelia from mock (left panels) and SARS-CoV-2 infected (right panels)  
10 hamsters at 4 dpi. Enlarged views of ciliated cell are shown in bottom panels.

11 **(D)** Quantification of ciliated area in hamster tracheas imaged by SEM (n=5 images per group).  
12 Differences between medians  $\pm$ IQR are measured by a Mann Whitney test.

13 **(E)** IF imaging of hamster tracheas at 4 dpi. Ciliated cells are labeled with  $\beta$ -tubulin IV, basal cells by  
14 cytokeratin-5, and nuclei by Hoechst. Representative images are shown for a mock infected animal (left),  
15 and SARS-CoV-2 infected animals who received a low dose (middle) or a high dose (right) of virus.

16

17

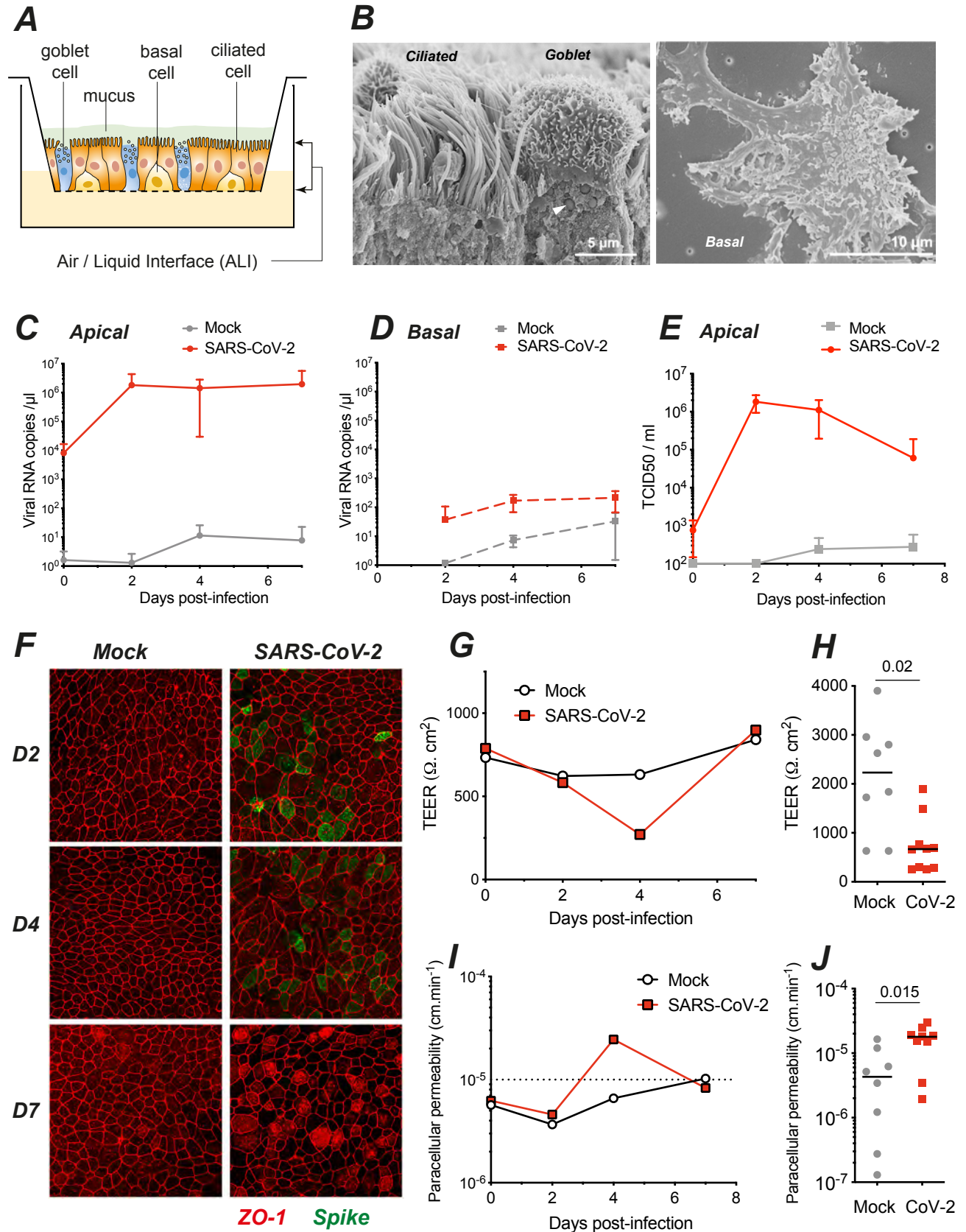


Figure 1

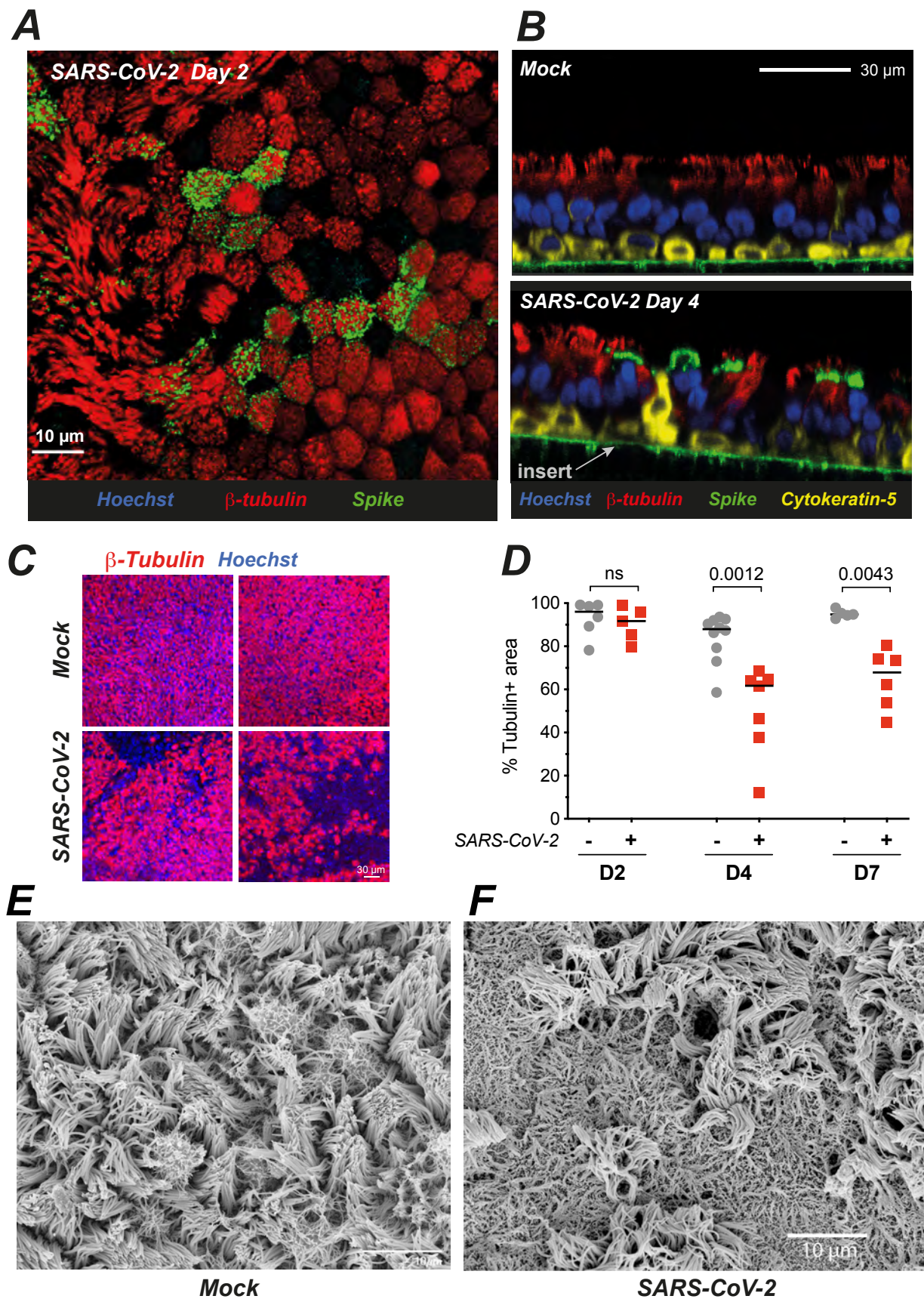


Figure 2



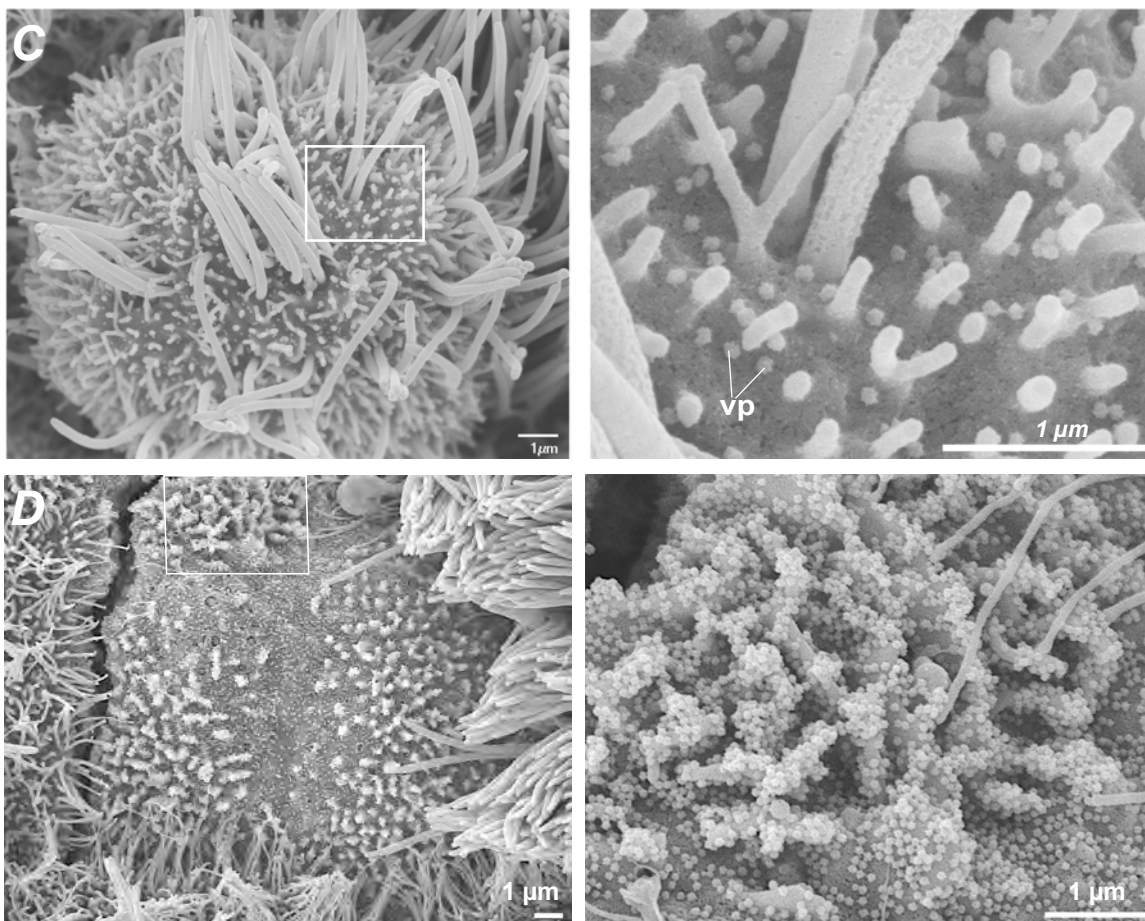
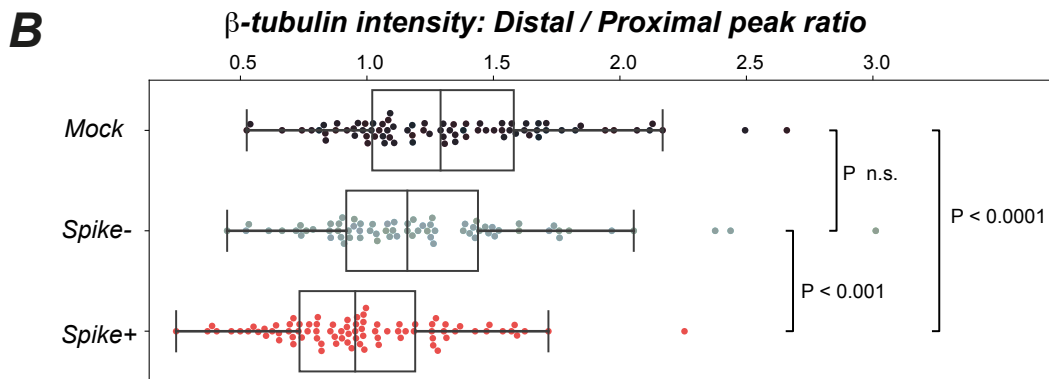
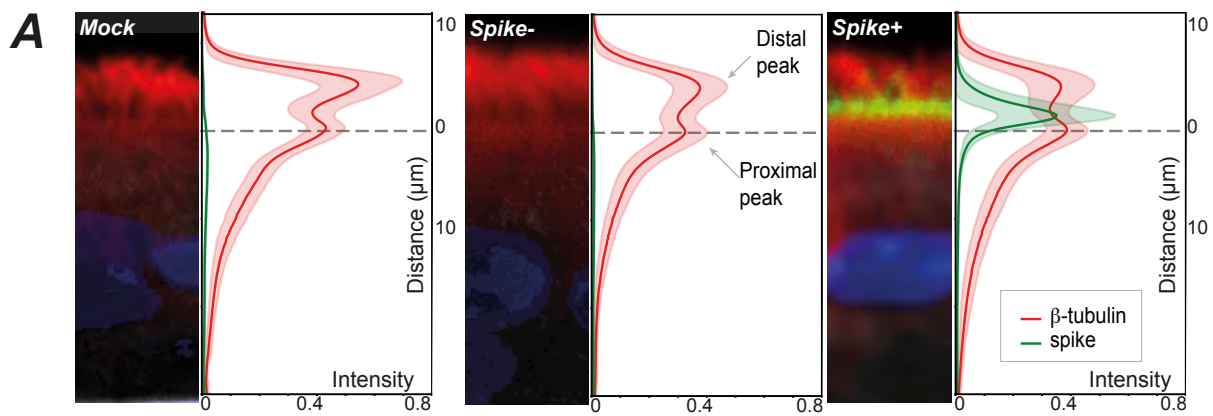


Figure 3

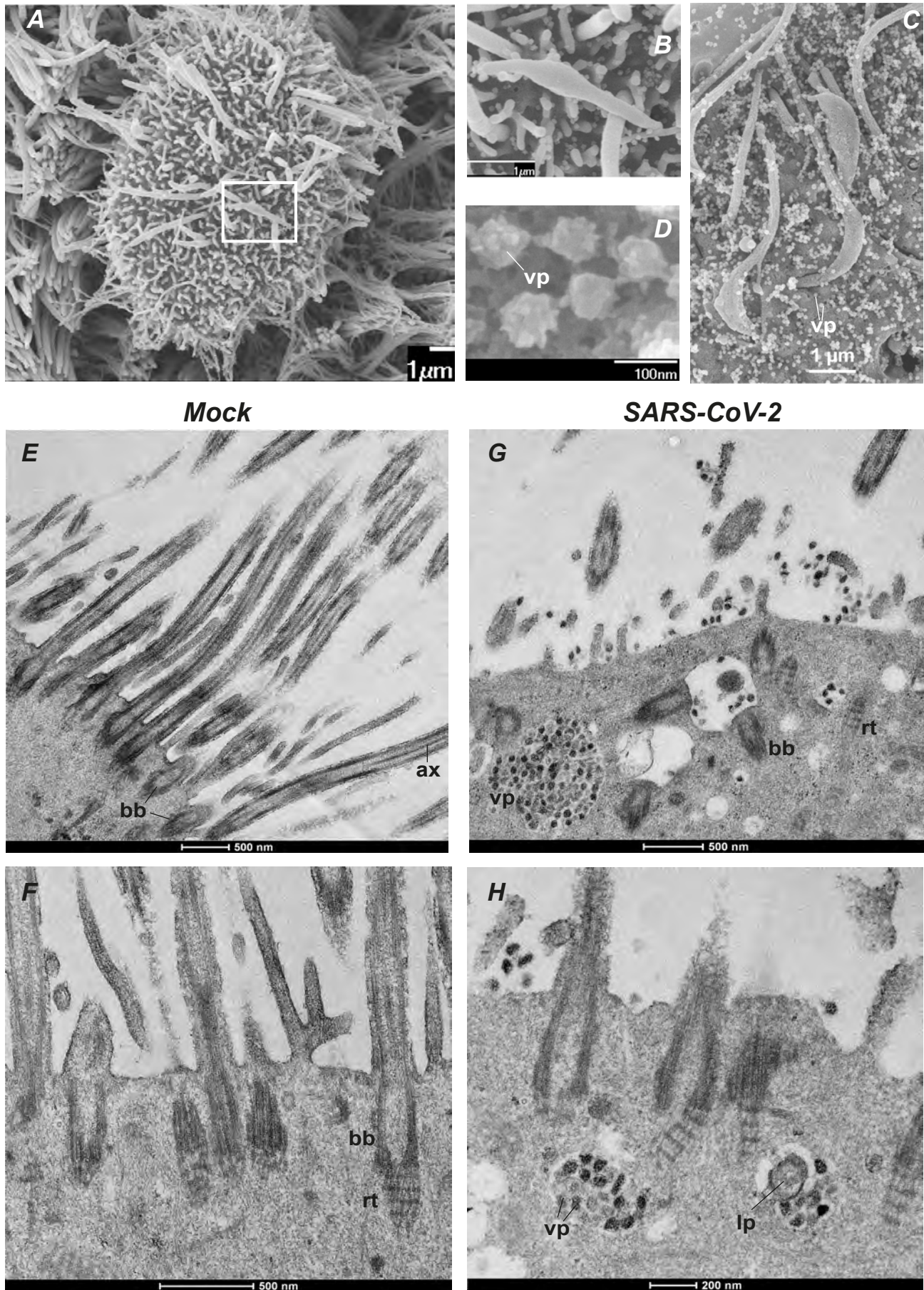


Figure 4

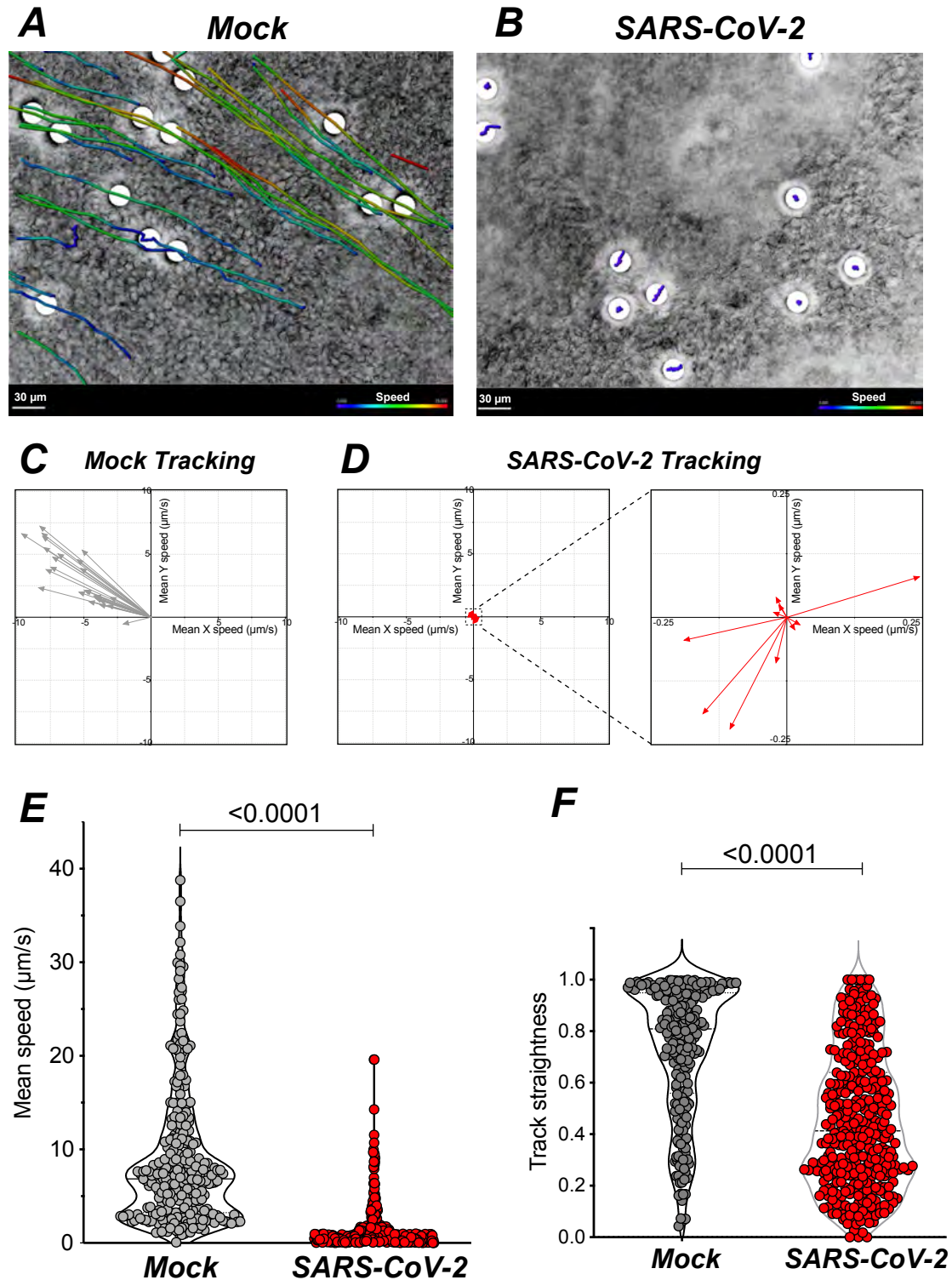


Figure 5

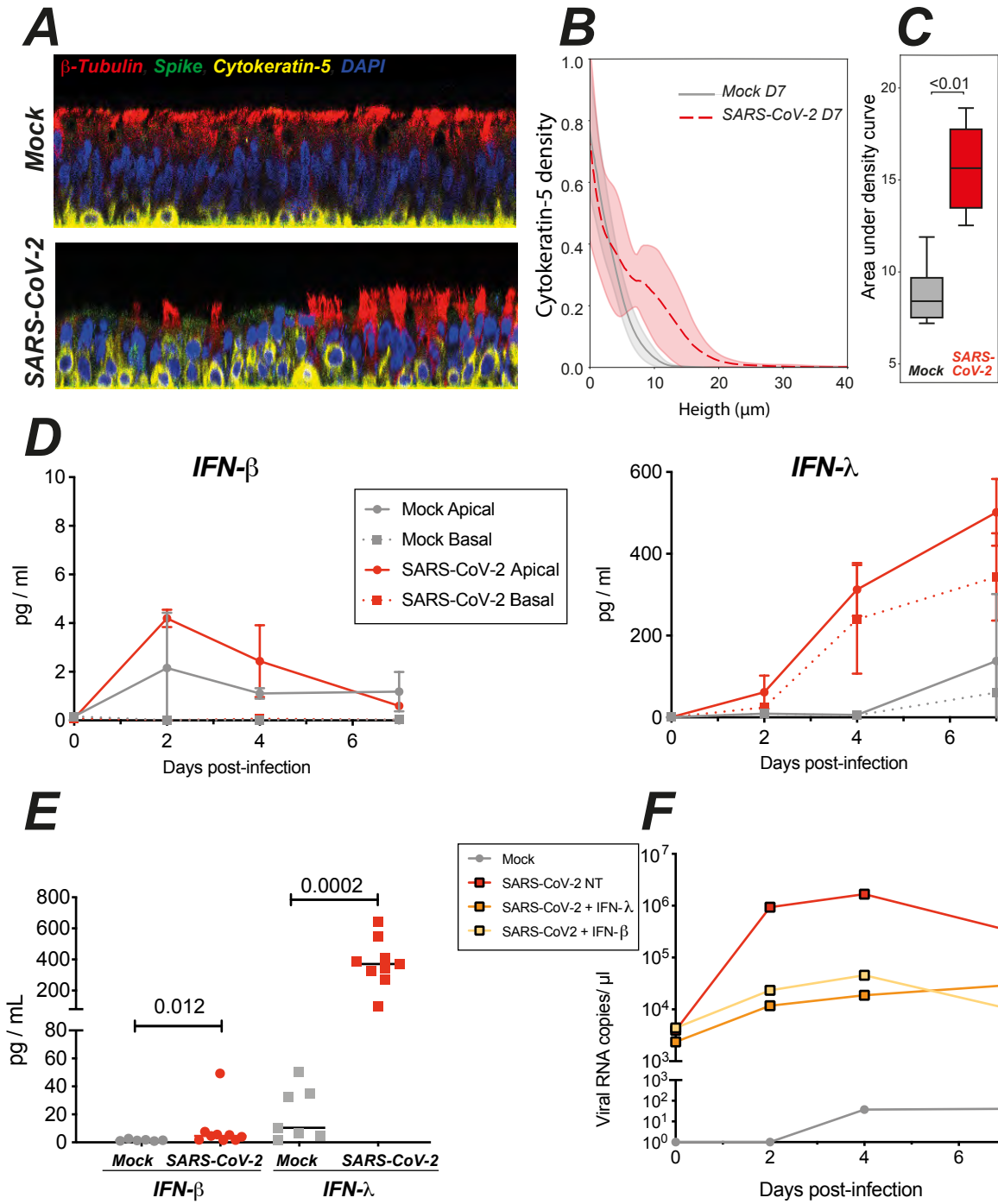


Figure 6

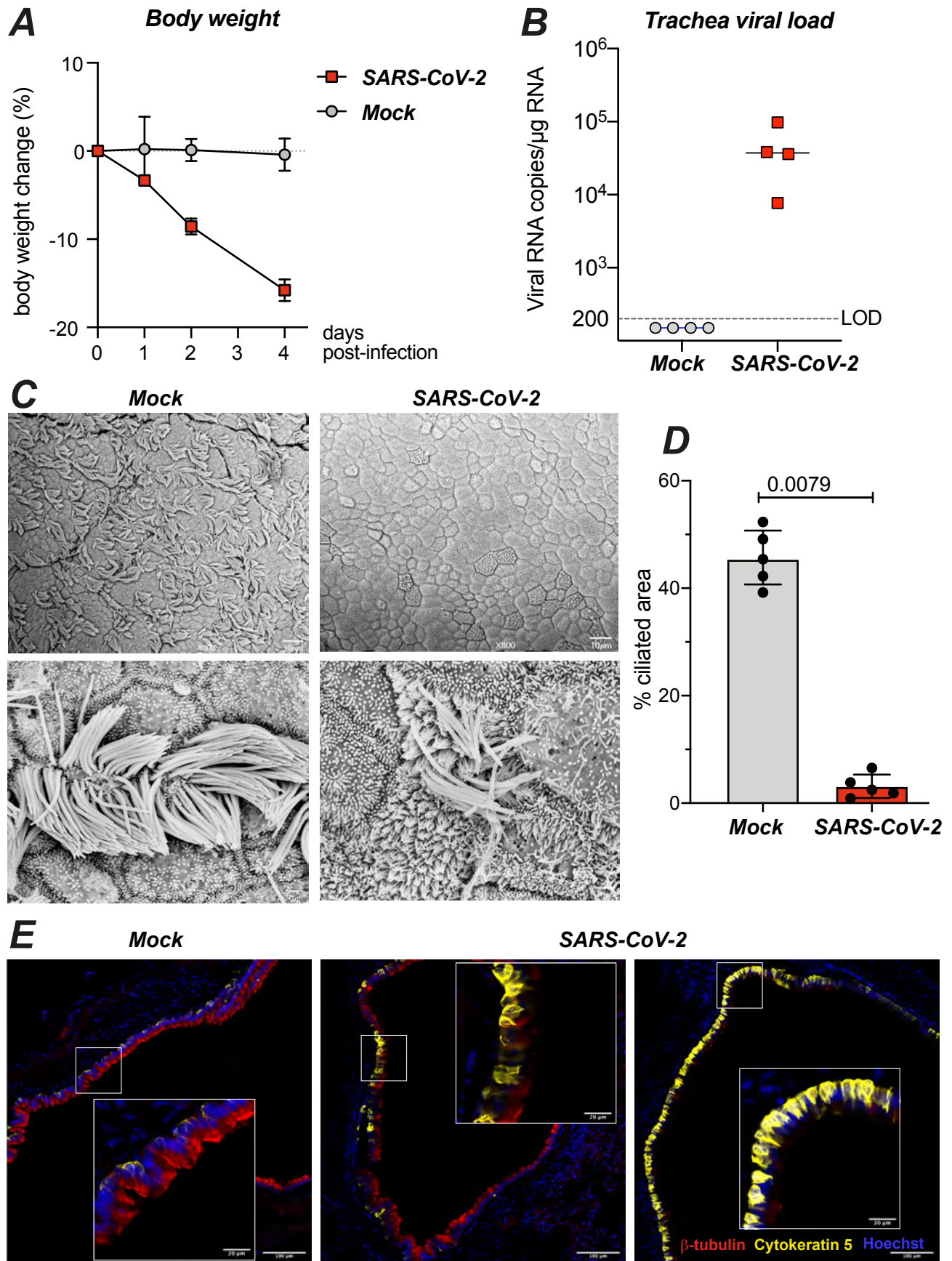


Figure 7