



HAL
open science

Ultrasensitive detection of p24 in plasma samples from people with primary and chronic HIV-1 infection

Caroline Passaes, Héloïse M. Delagreverie, Véronique Avettand-Fenoel, Annie David, Valérie Monceaux, Asma Essat, Michaela Müller-Trutwin, Darragh Duffy, Nathalie de Castro, Linda Wittkop, et al.

► To cite this version:

Caroline Passaes, Héloïse M. Delagreverie, Véronique Avettand-Fenoel, Annie David, Valérie Monceaux, et al.. Ultrasensitive detection of p24 in plasma samples from people with primary and chronic HIV-1 infection. *Journal of Virology*, 2021, 95 (14), pp.e0001621. 10.1128/JVI.00016-21 . pasteur-03236471

HAL Id: pasteur-03236471

<https://pasteur.hal.science/pasteur-03236471>

Submitted on 26 May 2021

HAL is a multi-disciplinary open access archive for the deposit and dissemination of scientific research documents, whether they are published or not. The documents may come from teaching and research institutions in France or abroad, or from public or private research centers.

L'archive ouverte pluridisciplinaire **HAL**, est destinée au dépôt et à la diffusion de documents scientifiques de niveau recherche, publiés ou non, émanant des établissements d'enseignement et de recherche français ou étrangers, des laboratoires publics ou privés.

Copyright

1 **Ultrasensitive detection of p24 in plasma samples from people with primary and**
2 **chronic HIV-1 infection**

3

4 **Short title: Ultrasensitive detection of HIV-1 p24 in plasma**

5

6 Caroline PASSAES^{1*}, Héloïse M. DELAGREVERIE², Véronique AVETTAND-FENOEL^{3, 4, 5},
7 Annie DAVID¹, Valérie MONCEAUX¹, Asma ESSAT⁶, Michaela MÜLLER-TRUTWIN¹,
8 Darragh DUFFY⁷, Nathalie DE CASTRO⁸, Linda WITTKOP⁹, Christine ROUZIYOUX³, Jean-
9 Michel MOLINA⁸, Laurence MEYER⁶, Constance DELAUGERRE², Asier SAEZ-CIRION^{1*}

10

11 ¹ Institut Pasteur, HIV Inflammation et Persistance, Paris, France.

12 ² INSERM U944, Université de Paris, Paris, France; Laboratoire de Virologie, Hôpital
13 Saint Louis, Assistance Publique-Hôpitaux de Paris, Paris, France.

14 ³ Assistance Publique-Hôpitaux de Paris, Service de Microbiologie Clinique, Hôpital
15 Necker-Enfants Malades, Paris, France.

16 ⁴ Université de Paris, Faculté de Médecine, Paris, France.

17 ⁵ INSERM, U1016, CNRS, UMR8104, Institut Cochin, Paris, France.

18 ⁶ Centre de Recherche en Epidémiologie et Santé des Populations (CESP), Université
19 Paris-Sud, Université Paris- Saclay, INSERM, Le Kremlin-Bicêtre, France.

20 ⁷ Institut Pasteur, Translational Immunology Lab, Paris, France.

21 ⁸ INSERM U941, Université de Paris, Paris, France; Département de Maladies
22 infectieuses, Hôpital Saint Louis, Assistance Publique-Hôpitaux de Paris, Paris, France.

- 23 ⁹ ISPED, Inserm, Bordeaux Population Health Research Center, Team MORPH3EUS,
24 UMR 1219, CIC-EC 1401, Bordeaux University; Pole de Santé Publique, Service
25 d'Information Medicale, Bordeaux, France.
26 *Correspondence: cpereira@pasteur.fr or asier.saez-cirion@pasteur.fr

27 **Abstract**

28 HIV-1 Gag p24 has long been identified as an informative biomarker of HIV replication,
29 disease progression and therapeutic efficacy, but the lower sensitivity of
30 immunoassays in comparison to molecular tests and the interference with antibodies
31 in chronic HIV infection limits its application for clinical monitoring. The development
32 of ultrasensitive protein detection technologies may help overcoming these
33 limitations. Here we evaluated whether immune-complex dissociation combined with
34 ultrasensitive digital ELISA Simoa technology could be used to quantify p24 in plasma
35 samples from people with HIV-1 infection. We found that, among different immune-
36 complex dissociation methods, only acid-mediated dissociation was compatible with
37 ultrasensitive p24 quantification by digital ELISA, strongly enhancing p24 detection at
38 different stages of HIV-1 infection. We show that ultrasensitive p24 levels correlated
39 positively with plasma HIV-RNA and HIV-DNA and negatively with CD4+ T cells in the
40 samples from people with primary and chronic HIV-1 infection. In addition, p24 levels
41 also correlated with plasma D-dimers and IFN α levels. P24 levels sharply decreased to
42 undetectable levels after initiation of combined antiretroviral treatment (cART).
43 However, we identified a group of people who, 48 weeks after cART initiation, had
44 detectable p24 levels despite most having undetectable viral loads. These people had
45 different virologic and immunologic baseline characteristics when compared with
46 people who had undetectable p24 after cART. These results demonstrate that
47 ultrasensitive p24 analysis provides an efficient and robust mean to monitor p24
48 antigen in plasma samples from people with HIV-1 infection, including during
49 antiretroviral treatment, and may provide complementary information to other
50 commonly used biomarkers.

51

52 **Importance**

53 The introduction of combined antiretroviral treatment has transformed HIV-1 infection
54 in a manageable condition. In this context, there is a need for additional biomarkers to
55 monitor HIV-1 residual disease or the outcome of new interventions, such as in the
56 case of HIV cure strategies. The p24 antigen has a long half-life outside viral particles
57 and it is therefore a very promising marker to monitor episodes of viral replication or
58 transient activation of the viral reservoir. However, the formation of immune-
59 complexes with anti-p24 antibodies makes its quantification difficult beyond acute
60 HIV-1 infection. We show here that, upon immune-complex dissociation, new
61 technologies allow the ultrasensitive p24 quantification in plasma samples throughout
62 HIV-1 infection, at levels close to that of viral RNA and DNA determinations. Our results
63 further indicate that ultrasensitive p24 quantification may have added value when
64 used in combination with other classic clinical biomarkers.

65

66 **Key Words:** HIV/AIDS; HIV p24 antigen; Gag p24; Simoa; ELISA; biomarker; plasma

67

68

69

70 **Introduction**

71 Human Immunodeficiency Virus (HIV) capsid p24 is a 24-25kDa protein encoded by the
72 *gag* gene and corresponds to the most abundant viral antigen. Detection of p24 is
73 considered essential for the diagnosis of HIV infection, especially in individuals under
74 pre-exposure prophylaxis and newly infected individuals (1). Fourth generation
75 antibody-antigen assays detecting p24 in addition to anti-HIV antibodies are currently
76 recommended for HIV testing (2), as they reduce the time between infection and HIV
77 diagnosis allowing people with HIV (PWH) to start antiretroviral treatment as early as
78 possible (3). Prior to the development of nucleic acid tests (NAT), p24 was used as a
79 surrogate marker of HIV replication, disease progression and therapeutic efficacy in
80 the clinical monitoring of PWH (4-10). At primary infection, p24 levels are increased
81 and were shown to correlate with HIV-RNA (4, 11-16). At chronic HIV infection, PWH
82 positive for p24 antigen showed a higher risk of developing AIDS than those who
83 remain antigen negative (12, 17, 18). The quantification of plasma p24 has shown
84 superiority to RNA viral determination in anticipating decline in CD4+ T cell counts in
85 some studies (5, 18) and has shown to better correlate with CD8+ T cell activation in
86 another (6). Moreover, p24 is sometimes detected dissociated from viral particles (i.e.
87 in the absence of viral RNA), which might provide a more extensive estimation of the
88 infection burden in the organism (6, 19).

89

90 However, although HIV-1 p24 is recognized as an informative biomarker, its detection
91 by classical enzyme-linked immunosorbent assays (ELISAs) is less sensitive than HIV
92 nucleic acid tests, in part due to the small sample volume that can be tested. In
93 addition, after seroconversion, the development of anti-HIV humoral responses make

94 the detection of p24 inaccurate by immunoassays due to the formation of antigen-
95 antibody immune-complexes (1). The development of Single-molecule array (Simoa)
96 technology represents an important recent advance in ultrasensitive protein
97 detection, reaching detection at femtomolar concentrations (20, 21). With this
98 technology, single molecule HIV-1 Gag p24 detection is 1,000-fold more sensitive than
99 current available ELISA tests. We have previously tested the sensitivity of this assay in
100 HIV-infected cells and in culture supernatants. We showed that viral proteins produced
101 by a single infected cell could be detected by an ultrasensitive p24 assay, which opens
102 new opportunities for the study of HIV pathogenesis (22). To date, the applicability of
103 an ultrasensitive HIV p24 assay in patients' samples was demonstrated only in serum
104 from HIV-infected individuals during acute infection positive for HIV-RNA, but non-
105 reactive for anti-HIV antibodies (23). More recently, the single molecule digital p24
106 assay showed enhanced sensitivity when compared to the currently approved fourth-
107 generation antigen/antibody combination and stand-alone p24 antigen assays in a
108 panel of serially diluted RNA-positive/antibody-negative plasma-derived culture
109 supernatants (24). The applicability and relevance of ultrasensitive HIV p24 detection
110 in serum/plasma samples from chronically infected individuals remains unknown.

111

112 We show here that, upon immune-complex dissociation (ICD) with an approach
113 compatible with the single molecule assay, p24 can be detected at ultrasensitive levels
114 in plasma from most individuals during primary and chronic HIV-1 infection. The levels
115 of p24 dropped sharply upon antiretroviral treatment initiation but remained
116 detectable in some individuals despite undetectable RNA viral load. The increased
117 sensitivity of this technique could bring new insights for the predictive value of p24 as

118 an informative biomarker of viral replication, inflammation and treatment efficacy in

119 people with primary and chronic HIV-1 infection.

120

121 **Results**

122 **Acid dissociation to disrupt antigen-antibody immune-complexes is compatible with**
123 **ultrasensitive p24 quantification**

124 Immune-complex dissociation is required to increase the sensitivity of p24 antigen
125 assays during chronic HIV-1 infection. We therefore assessed whether common
126 methods for ICD are compatible with the digital ELISA technology. We tested (i) heat,
127 (ii) heat with sodium dodecyl sulfate (SDS) and diethylenetriaminepentaacetic acid
128 (DTPA), and (iii) acid dissociation with Glycine-HCl pH 1.8 or 2.5. Heat treatment
129 denatures antibodies, but high and non-specific loss of antigen and protein coagulation
130 due to this procedure was reported (25). The treatment with a solution containing SDS
131 and DTPA for diluting samples prior to heat treatment aimed at reducing these
132 problems. SDS reduces protein coagulation by giving them a negative charge and DTPA
133 chelates iron and other ions, preventing further interference in the p24 assay (26).

134

135 We first evaluated the impact of these different methods on the ultrasensitive p24
136 standard curve. Based on the average enzyme per bead (AEB) and the shape of the
137 standard curves obtained after different treatments for ICD, we observed that heat
138 alone or in combination with SDS+DTPA importantly interfered with p24
139 determination, flattening the standard curves and increasing the background signal in
140 the absence of p24 (Figures 1A and 1B). Higher AEB values were also observed when
141 testing only the SDS+DTPA solution in the absence of p24 protein. The other reagents
142 used for sample dilutions and virus inactivation did not shown any impact (Figure 1C).

143 We next evaluated the effect of heat-mediated with SDS and DTPA and acid
144 dissociation methods in plasma from HIV-1 negative donors. We confirmed that heat-

145 mediated with SDS+DTPA treatment, but not acid dissociation, increases the
146 background signal for p24 detection in plasma samples (Figure 1D). These results
147 suggest that heat-mediated dissociation, with or without SDS+DTPA, is not compatible
148 with the Simoa technology and may overestimate p24 levels in clinical samples. It is
149 possible that heating itself alters the p24 conformation or that heating-mediated
150 protein coagulation promotes non-specific binding of assay antibodies. Treatment with
151 SDS/DTPA did not prevent these problems, conversely it contributed to an increase of
152 non-specific signal.

153

154 In contrast, the curves obtained after acid-mediated dissociation with Glycine-HCl
155 displayed the same profile than non-treated samples (Figures 1A, 1B and 1D). AEB
156 values were comparable and standard curves obtained with non-treated samples and
157 samples undergoing acid-mediated ICD presented equal distributions (Figures 1A and
158 1B). Therefore, the acid-mediated ICD methods described here can be used for p24
159 ultrasensitive quantification by digital ELISA, while other classical methods previously
160 validated for ICD in classical ELISA assays are not compatible with this new technology.
161 No differences were observed between Glycine pH 1.8 and pH 2.5, and we kept using
162 the Glycine pH 1.8 protocol for further analyses.

163

164 **Acid-mediated ICD combined with u_s p24 assay enhances p24 quantification in plasma** 165 **samples of people with HIV**

166 After defining the best experimental conditions to quantify the levels of p24 in the
167 plasma, we evaluated the sensitivity of Simoa p24 detection in plasma samples from
168 PWH. We first determined a cutoff to best discriminate between positive and negative

169 samples by analyzing plasma from HIV negative donors (n=15). Based on the results
170 obtained, we determined 24 fg/mL (calculated as 2.5 standard deviations from the
171 mean signal in plasma from HIV negative donors, see methods for further detail) as the
172 cutoff to consider an ICD-treated plasma sample as positive for p24 in our experimental
173 conditions (Figure 2A), and we used this cutoff in our analyses. This value is higher than
174 the lower limit of quantification (10 fg/mL) and the lower limit of detection (LoD, 3
175 fg/mL) proposed for the assay, likely due to interference by some blood components
176 in protein quantification.

177

178 We next evaluated the levels of p24 in plasma samples from 25 PWH displaying a wide
179 range of detectable viremia ranging from 1.7 to 7 HIV-1 RNA Log copies/mL. The
180 treatment of plasma samples with Glycine pH 1.8 for ICD increased the p24 levels
181 detected compared to non-treated samples ($p=0.0026$) (Figure 2B). After ICD, 19/25
182 samples had p24 levels above our experimental cutoff. While p24 was often detected
183 in samples with VL $>10^4$ copies/mL (18/19 positive samples), the sensitivity dropped
184 sharply for samples with lower VL (1/6 positive samples). Indeed, we found a strong
185 correlation between p24 values and the corresponding plasma viral loads (Figure 2C;
186 $r=0.86$, $p<0.0001$). The correlation was still statistically significant when we considered
187 only the samples with p24 values above the cutoff ($r=0.76$, $p<0.0001$). This correlation
188 with viral RNA was not observed when we used the p24 values obtained in samples
189 not treated by ICD ($r=0.41$, $p=0.12$). These analyses showed that immune-complex
190 dissociation enhanced the ultrasensitive quantification of p24 in the plasma of PWH.

191

192 **Ultrasensitive p24 detection in a cohort of PWH during primary HIV-1 infection**

193 To validate our approach, we analyzed the ultrasensitive p24 quantification in 92 plasma
194 samples from a subcohort of people with primary HIV-1 infection from the ANRS CO6
195 PRIMO cohort (27). Samples from 92 individuals displaying highly variable plasma RNA
196 viral loads were analyzed (Figure 3A, median: 48,263 copies/mL; range: 24 –
197 211,360,000). The median time since estimated HIV acquisition was 52 days (range:
198 20-183 days). We detected $_{us}p24$ values above the experimental cutoff in 72 of the 92
199 samples (Figure 3A). There was a wide range of p24 antigen concentrations (median
200 1.013 pg/mL; IQR [0.027 – 191.4]). As before, a strong correlation was observed
201 between viral RNA and $_{us}p24$ in the plasma samples analyzed (Figure 3B; $r=0.7791$,
202 $p<0.0001$). We also found a strong positive correlation between $_{us}p24$ levels and the
203 cell-associated HIV-DNA (Figure 3C, $r=0.64$, $p<0.0001$). These correlations were still
204 statistically significant when we considered only the samples with $_{us}p24$ values above
205 the cutoff ($r=0.69$, $p<0.0001$ and $r=0.61$, $p<0.0001$ for HIV-RNA levels and HIV-DNA
206 levels respectively). A weak negative correlation was observed between $_{us}p24$ levels
207 and the CD4+ T cell counts corresponding to these samples (Figure 3D; $r=-0.22$,
208 $p=0.03$), although only a trend was found with samples with above cutoff-p24 levels
209 ($r=-0.22$, $p=0.07$).

210

211 These data showed that $_{us}p24$ can be quantified after ICD in plasma samples from PWH
212 in different stages of primary infection. Moreover, the p24 levels were associated with
213 other classic biomarkers of HIV-1 infection.

214

215 **Ultrasensitive p24 quantification in PWH at chronic HIV-1 infection prior to and after**
216 **cART initiation**

217 ICD should enable the quantification of p24 during chronic infection despite the
218 presence of anti-p24 antibodies. We thus quantified $_{us}p24$ in plasma samples from 137
219 volunteers with chronic HIV-1 infection (viral loads are depicted in Figure 4A) who were
220 enrolled in the ANRS REFLATE TB trial and initiated cART treatment. Before cART (W0),
221 p24 values above cutoff were detected in 98 out of 137 samples (Figure 4A). There was
222 again a statistically significant correlation between $_{us}p24$ and the RNA viral load in the
223 plasmas analyzed (Figure 4B, $r=0.42$, $p<0.0001$). We also found a positive correlation
224 between $_{us}p24$ levels and CD4+ T cell associated HIV-DNA levels (Figure 4C, $r=0.32$,
225 $p=0.0004$) and a trend for a weak negative correlation with CD4+ T cell counts (Figure
226 4D, $r=-0.15$, $p=0.07$).

227

228 Next we aimed to analyze $_{us}p24$ values after cART treatment. The participants at the
229 ANRS REFLATE trial were co-infected with tuberculosis. They initiated antiretroviral
230 treatment (raltegravir (400mg), raltegravir (800mg) or efavirenz (600mg), with
231 tenofovir and lamivudine) 2-8 weeks after treatment for TB was initiated. We
232 compared the $_{us}p24$ values prior to cART initiation to those 24 and 48 weeks after cART
233 initiation in the 108 participants with samples available throughout the follow up (W0,
234 W24 and W48). There was a dramatic decrease of $_{us}p24$ levels at weeks 24 and 48 after
235 cART initiation, in line with the decrease in RNA viral load levels observed at the same
236 time points (Figure 5A and (28)). The $_{us}p24$ became undetectable for 89/108
237 participants after 48 weeks on cART (Figure 5A). Among the 19 individuals with $_{us}p24$
238 above the cutoff at W48, 10 also had detectable $_{us}p24$ at W24. Five had detectable viral
239 RNA loads at W48. Overall, 14/19 samples with detectable $_{us}p24$ levels at W48 were
240 characterized by persistent levels of antigen and/or transient viral RNA relapse on

241 cART. We observed several differences when we compared the characteristics before
242 cART initiation of these 19 participants with the characteristics of the other
243 participants whose p24 levels were detectable before cART and dropped to
244 undetectable levels with treatment (n=59). Although both subgroups of participants
245 had similar RNA viral loads and $_{us}p24$ levels before treatment, we found a trend for a
246 lower HIV-RNA/ $_{us}p24$ ratio in the participants who maintained detectable $_{us}p24$ after
247 48 weeks of treatment (Figure 5B). Moreover, these participants had, before
248 treatment, lower cell-associated HIV-DNA levels (Figure 5C) and higher CD4+ T cell
249 counts (Figure 5D) than the participants with undetectable $_{us}p24$ levels after cART. No
250 differences were observed for the same parameters at W48. The baseline
251 demographic and clinical characteristics of the participants with positive or negative
252 $_{us}p24$ at W48 after cART initiation are shown in Table 1.

253
254 We analyzed the association of $_{us}p24$ levels with some of the main plasma markers
255 associated with inflammation and coagulation in PWH measured in the same samples
256 (28). At W0, a weak significant correlation was observed between $_{us}p24$ levels with D-
257 dimers ($r=0.24$, $p=0.006$) and IFN α ($r=0.38$, $p<0.001$) (Figure 6A), and these correlations
258 were still statistically significant when we took into consideration only the $_{us}p24$ values
259 above the cutoff ($r=0.23$, $p=0.03$; and $r=0.25$ $p=0.02$, for D-dimers and IFN- α
260 respectively). We did not find correlations between $_{us}p24$ and CRP, IL-6 or sCD14. No
261 correlations were found between $_{us}p24$ and soluble plasma markers at W48. We then
262 studied the subgroup of participants who remained detectable for p24 at W48. They
263 also differed for the levels of some inflammatory markers before treatment initiation.
264 While the participants whose $_{us}p24$ levels became undetectable with cART had higher

265 IFN α levels at W0 (Figure 6B), the participants whose $_{us}p24$ levels remained detectable
266 were characterized by higher plasma levels of CRP (Figure 6C), and tended to have
267 higher levels of D-dimers (Figure 6D) and IL-6 (Figure 6E). These differences were lost
268 after 48 weeks of cART (not shown). Altogether, these results show that $_{us}p24$ can be
269 monitored throughout HIV-1 infection and may have a complementary value to other
270 biomarkers. Moreover, the detection of p24 in the plasma of PWH under cART may
271 reveal the presence of a subset of people with particular immunovirological
272 characteristics.

273 **Discussion**

274 Plasma HIV-RNA and CD4+ T cell counts are commonly used biomarkers to monitor
275 HIV-1 infection. However, these markers do not always reflect the evolution of
276 infection, in particular the occurrence of comorbidities or viral reactivation events
277 during antiretroviral treatment. Here, we developed a method that allowed
278 quantification of $_{us}p24$ despite the presence of anti-p24 antibodies. We show that
279 ultrasensitive p24 quantification is a robust virologic marker associated with HIV-1 RNA
280 and DNA during primary and chronic HIV-1 infection, which recapitulates viral
281 suppression observed upon cART, but may also provide added value regarding events
282 dissociated from viral replication.

283

284 In the present work we report a higher frequency of p24 detection in samples with
285 viral loads higher than 10^3 copies/mL, which correspond to an increment of at least 1
286 Log when compared to conventional ELISA methods (23, 24, 29). Overall, we estimate
287 that current standard immunoassays would allow p24 detection in a very small fraction
288 (15%) of the samples included in this study. Here, the quantification of p24 was
289 possible in > 70% of tested samples. As compared to nucleic acid quantification, the
290 sensitivity of the $_{us}p24$ assay is still limited, due in part to the amount of plasma that
291 can be tested. The inclusion of a prior ultracentrifugation step represents an increase
292 in the hands-on time, but efficiently increases the sensitivity of immunoassays for
293 quantification of p24 in plasma samples with RNA viral loads at the magnitude of 10^2
294 copies/mL (not shown).

295

296 Numerous studies have shown that chronic HIV-related immune activation and
297 inflammation are associated with increased risk of morbidity and mortality in PWH (30-
298 35). Moreover, some plasma markers better predict evolution of HIV-1 infection than
299 viral load or CD4+ T cell counts (36-38). We found that $_{us}p24$ was correlated with
300 plasma levels of the coagulation marker D-dimer during chronic infection. We also
301 found a correlation between $_{us}p24$ and $IFN\alpha$, which could also be quantified by the
302 ultrasensitive digital assay in the same samples. Some recent studies have shown that
303 markers of HIV-1 transcription may be better associated with systemic inflammation
304 than viremia or the levels of integrated proviruses (39-42). The relative association of
305 available biomarkers of infection with the levels of inflammation may depend on the
306 various factors that sustain chronic inflammation (33, 43).

307

308 Strong correlations were found between HIV-RNA and $_{us}p24$ in the samples obtained
309 during primary and chronic infection, and the overall $_{us}p24$ detection rate was similar
310 in the samples from the chronically infected cohort than in those from the PHI cohort
311 (72% vs 78%). However, while in the PHI cohort we could detect p24 in most samples
312 with $VL > 10^4$ RNA copies/mL (64/68 samples with detectable $_{us}p24$), the $_{us}p24$ detection
313 rate was lower in the chronic samples with equivalent VL (94/121 samples with
314 detectable $_{us}p24$, $p=0.008$). The relative half-lives of HIV-1 p24 and RNA diverge during
315 the course of infection (44) and the difference of antibodies abundance and avidity
316 between PHI and chronic infection could also impact the ICD efficacy (26). It was
317 indeed previously described that ICD can be incomplete in some individuals, depending
318 on the concentration and avidity of specific anti-HIV antibodies in the samples (45). It
319 is also important to notice that the samples corresponding to chronic infection came

320 from participants co-infected with HIV-1 and TB, which were characterized by higher
321 inflammation levels than PWH with no TB co-infection, even after 48 weeks of
322 suppressive antiretroviral treatment (28). Additional studies including PWH without
323 co-infections should be done in the future to elucidate whether $_{us}p24$ may in some
324 cases better reflect viral activity in blood and/or in lymphoid tissues than viral RNA.
325 Further studies might also analyze its potential contribution to chronic inflammation.
326 In any case, HIV-1 $_{us}p24$ and RNA levels may provide complementary readouts to
327 monitor infection. It is reasonable to imagine that p24 levels during chronic infection
328 can indicate the presence of viral particles, in particular without cART, but also antigen
329 production by cells carrying non-productive viruses, which frequency increases with
330 duration of infection (46-48). The latter might particularly be the case during
331 antiretroviral treatment. The half-life of p24 outside viral particles was shown to be
332 around 42 days, and thus longer than for viral RNA, which may allow the detection of
333 p24 even after viral replication is suppressed (13). It was indeed intriguing to observe
334 that in some samples p24 remained detectable under cART despite undetectable viral
335 RNA levels. These samples came from participants with marked immunological and
336 virological differences before treatment initiation. The observation that in these
337 individuals there was a trend towards lower RNA/p24 ratio before ART initiation and
338 that in most cases $_{us}p24$ could be detected both in the W24 and W48 samples, invites
339 to think that these individuals might carry infected cells with higher antigen
340 production. It is tempting to speculate that this may have led to enhanced stimulation
341 of immune responses before treatment initiation (and perhaps at a lesser extent also
342 under cART), which may explain higher levels of inflammatory markers at lower
343 frequency of infected cells at that point. Unfortunately, no analyses of T or B cell

344 activation, nor of HIV-specific responses were available for this study. The use of _{us}p24
345 as a biomarker in HIV infection and persistence will require validation in other cohorts
346 of PWH.

347

348 In conclusion, this study shows that digital ELISA combined with acid-ICD allows the
349 monitoring of _{us}p24 in individuals with primary and chronic HIV-1 infection. This novel
350 tool may provide helpful information to monitor the burden of infection during cART.

351 Moreover, this marker could be helpful to investigate the presence of HIV antigens in
352 samples from participants undergoing interventions aiming at HIV remission or
353 eradication, such as HIV reservoir reactivation in “shock and kill” strategies (49).

354 **Methods**

355 **Cohorts and ethics statement**

356 Blood samples from HIV-negative controls were obtained from the French Blood Bank
357 (Etablissement Français du Sang) in the context of a collaboration agreement with the
358 Institut Pasteur (C CPSL UNT, number 15/EFS/023). Plasma samples from people with
359 acute and chronic HIV-1 infection monitored for virologic markers at the Hospital
360 Necker-Enfants malades (France) were used to determine the efficacy of ICD and the
361 sensitivity of the Quanterix Simoa p24 assay in plasma samples. Plasma samples from
362 the French National Agency for Research on AIDS and Viral Hepatitis (ANRS) CO6
363 PRIMO cohort (50) and 12180 Reflate TB trial (51) were used to validate the protocol
364 for ultrasensitive p24 detection combined with ICD. People with primary HIV infection
365 (PHI) were enrolled in the ANRS CO6 PRIMO following the inclusion criteria as
366 described in (50). The cohort was approved by the Ile-de-France-3 Ethics Committee
367 and all patients give their written informed consent. The ANRS 12180 Reflate TB trial
368 was carried out in accordance with the ANRS Ethical Chart for Research in Developing
369 Countries, the Brazilian regulatory requirements for clinical trials and the Declaration
370 of Helsinki. The protocol was approved by national and local ethics committees in Brazil
371 (Comissão Nacional de Ética em Pesquisa [CONEP] and Comitê de Ética em Pesquisa
372 [CEP] at IPEC/FIOCRUZ) and France (Comité de Protection des Personnes de Paris Ile-
373 de-France-I). The experiments were conducted with the understanding and the written
374 informed consent of each participant.

375

376 **Samples**

377 EDTA blood samples were collected from each individual analyzed. Plasmas were
378 collected after centrifugation at 1800 rpm for 20 minutes and stored at -80°C.

379

380 **Immune-complex dissociation (ICD)**

381 Heat-mediated dissociation (52), with SDS and DTPA (26) and acid dissociation (53-55)
382 methods were tested for compatibility with ultrasensitive HIV-1 Gag p24 detection.

383 *Heat-mediated immune-complex dissociation:* Plasma samples (100 µL) were diluted
384 1/3 with distilled water and incubated for 5 minutes at 95°C in a water bath, then
385 cooled to room temperature prior to p24 quantification.

386 *Heat-mediated immune-complex dissociation with SDS and DTPA:* Plasma samples (100
387 µL) were diluted 1/3 with a solution of 7mM sodium dodecyl sulfate (SDS) and 1.5 mM
388 diethylenetriaminepentaacetic acid (DTPA), pH 7.2. Samples were incubated for 5
389 minutes at 95°C in a water bath, then cooled to room temperature prior to p24
390 quantification.

391 *Acid dissociation:* Plasma samples (100 µL) were diluted 1:1 with 1.5 M glycine-HCl pH
392 1.8, incubated 60 minutes at 37°C, and then neutralized with 1.5 M Tris-HCl pH 9.0. In
393 parallel we tested 1.5 M glycine-HCl pH 2.5 and neutralization with 1.5 M Tris-HCl pH
394 7.5.

395

396 **Ultrasensitive p24 (_{us}p24) digital immunoassay**

397 Plasma concentration of HIV-1 Gag p24 was determined on a Simoa HD-1 analyzer
398 using the Simoa HIV p24 kit (Quanterix, USA) following manufacturer's instructions.

399 Plasma samples were thawed at room temperature, centrifuged at 3000rpm for 5
400 minutes, and then inactivated with Triton X-100 (final concentration 2%) prior to p24

401 quantification. Four-parameter logistic (4PL) regression fitting was used to estimate
402 the concentration of p24. Samples below the limit of quantification were given an
403 arbitrary value of 0.024 pg/mL based on the established cutoff (cutoff was determined
404 based on the p24 AEB signal in plasma from HIV negative donors. It was calculated as
405 2.5 standard deviations from the mean of p24 AEB signal. Figure 2A represents the
406 range of background p24 signal in HIV negative samples, all below the established
407 cutoff of 0.024 pg/mL).

408

409 **IFN α ultrasensitive digital immunoassay**

410 Plasma samples from the ANRS CO6 PRIMO cohort and the ANRS Reflate TB trial were
411 assayed for IFN α . Plasma samples were thawed at room temperature, centrifuged at
412 3000rpm for 5 minutes, and then inactivated with Triton X-100 (final concentration
413 2%) prior to IFN α quantification. Plasma concentration of IFN α was determined on a
414 HD-1 analyzer using the Simoa human IFN α kit (Quanterix, USA) following
415 manufacturer's instructions. Four-parameter logistic (4PL) regression fitting was used
416 to estimate the concentration of IFN α .

417

418 **Clinical parameters and inflammation biomarkers**

419 ANRS PRIMO cohort viral RNA loads in plasma were determined with the COBAS
420 AmpliPrep/COBAS TaqMan HIV-1 Test, v2.0 (Roche Diagnostics, Germany). Total cell-
421 associated HIV-1 DNA was quantified with the Generic HIV-1 DNA Cell kit (Biocentric,
422 Bandol, France). CD4+ T-cell counts were determined by flow cytometry as previously
423 described (50, 56). The date of infection was estimated based on the date of symptom
424 onset minus 15 days, or, in asymptomatic patients, the date of the incomplete Western

425 blot finding minus 1 month or the midpoint between a negative and a positive ELISA
426 result (57).

427

428 The clinical parameters and inflammation biomarkers for the participants to the ANRS
429 Replate TB trial were determined as described in (51) and (28). Briefly, CD4+ T-cell
430 counts were determined by flow cytometry. Plasma HIV-RNA was determined either
431 with the COBAS AmpliPrep/COBAS TaqMan HIV-1 Test, v2.0 (Roche Diagnostics,
432 Germany) or the VERSANT HIV-RNA 3.0 assay (bDNA; Bayer, USA). Total cell-associated
433 HIV-1 DNA was quantified with the Generic HIV-1 DNA Cell kit (Biocentric, Bandol,
434 France). hsCRP and IL-6 levels were measured with the high-sensitivity Tina-quant C-
435 Reactive Protein Gen.3 and the Elecsys IL-6 Immunoassay kits, respectively. D-Dimers
436 were quantified using the STA -Liatest D-Di Plus. Human sCD14 was measured with the
437 hCD14 Quantikine ELISA Kit.

438

439 **Statistical analyses**

440 Statistical analyses were performed using GraphPad Prism, version 8.3.1. Comparisons
441 between groups were based on the nonparametric Mann-Whitney test. Correlations
442 were performed using the Spearman test. Differences were considered significant at a
443 *P* value <0.05.

444 **Acknowledgements**

445 This study was funded by the ANRS, the French National Agency of research on AIDS
446 and Viral Hepatitis and by MSDAvenir to A.S.-C. This study was developed in the
447 context of the ANRS RHIVIERA program.

448

449 **DECLARATION OF INTERESTS**

450 The authors declare no competing interests.

451 **References**

- 452 1. **Gray ER, Bain R, Varsaneux O, Peeling RW, Stevens MM, McKendry RA.** 2018. p24
453 revisited: a landscape review of antigen detection for early HIV diagnosis. *AIDS*
454 **32**:2089-2102.
- 455 2. **Alexander TS.** 2016. Human Immunodeficiency Virus Diagnostic Testing: 30 Years of
456 Evolution. *Clin Vaccine Immunol* **23**:249-253.
- 457 3. **Rutstein SE, Ananworanich J, Fidler S, Johnson C, Sanders EJ, Sued O, Saez-Cirion A,**
458 **Pilcher CD, Fraser C, Cohen MS, Vitoria M, Doherty M, Tucker JD.** 2017. Clinical and
459 public health implications of acute and early HIV detection and treatment: a scoping
460 review. *J Int AIDS Soc* **20**:21579.
- 461 4. **Erikstrup C, Kallestrup P, Zinyama-Gutsire RB, Gomo E, Luneborg-Nielsen M, Gerstoft**
462 **J, Schupbach J, Ullum H, Katzenstein TL.** 2008. p24 as a predictor of mortality in a
463 cohort of HIV-1-infected adults in rural Africa. *J Acquir Immune Defic Syndr* **48**:345-
464 349.
- 465 5. **Ledergerber B, Flepp M, Boni J, Tomasik Z, Cone RW, Luthy R, Schupbach J.** 2000.
466 Human immunodeficiency virus type 1 p24 concentration measured by boosted ELISA
467 of heat-denatured plasma correlates with decline in CD4 cells, progression to AIDS,
468 and survival: comparison with viral RNA measurement. *J Infect Dis* **181**:1280-1288.
- 469 6. **Schupbach J.** 2003. Viral RNA and p24 antigen as markers of HIV disease and
470 antiretroviral treatment success. *Int Arch Allergy Immunol* **132**:196-209.
- 471 7. **Schupbach J, Tomasik Z, Nadal D, Ledergerber B, Flepp M, Opravil M, Boni J.** 2000.
472 Use of HIV-1 p24 as a sensitive, precise and inexpensive marker for infection, disease
473 progression and treatment failure. *Int J Antimicrob Agents* **16**:441-445.
- 474 8. **Mellors JW, Rinaldo CR, Jr., Gupta P, White RM, Todd JA, Kingsley LA.** 1996. Prognosis
475 in HIV-1 infection predicted by the quantity of virus in plasma. *Science* **272**:1167-1170.
- 476 9. **Garcia MN, dos Ramos Farias MS, Avila MM, Rabinovich RD.** 2011. Presence of p24-
477 antigen associated to erythrocyte in HIV-positive individuals even in patients with
478 undetectable plasma viral load. *PLoS One* **6**:e14544.
- 479 10. **Schupbach J.** 2002. Measurement of HIV-1 p24 antigen by signal-amplification-
480 boosted ELISA of heat-denatured plasma is a simple and inexpensive alternative to
481 tests for viral RNA. *AIDS Rev* **4**:83-92.
- 482 11. **Fiebig EW, Wright DJ, Rawal BD, Garrett PE, Schumacher RT, Peddada L, Heldebrant**
483 **C, Smith R, Conrad A, Kleinman SH, Busch MP.** 2003. Dynamics of HIV viremia and
484 antibody seroconversion in plasma donors: implications for diagnosis and staging of
485 primary HIV infection. *AIDS* **17**:1871-1879.
- 486 12. **Read JS, Rich KC, Korelitz JJ, Mofenson LM, Harris R, Moye JH, Jr., Meyer WA, 3rd,**
487 **Pahwa SG, Bethel JW, Nugent RP.** 2000. Quantification of human immunodeficiency
488 virus type 1 p24 antigen and antibody rivals human immunodeficiency virus type 1
489 RNA and CD4+ enumeration for prognosis. National Institute of Child Health and
490 Human Development Intravenous Immunoglobulin Clinical Trial Study Group. *Pediatr*
491 *Infect Dis J* **19**:544-551.
- 492 13. **Ribas SG, Ondoa P, Schupbach J, van der Groen G, Fransen K.** 2003. Performance of a
493 quantitative human immunodeficiency virus type 1 p24 antigen assay on various HIV-
494 1 subtypes for the follow-up of human immunodeficiency type 1 seropositive
495 individuals. *J Virol Methods* **113**:29-34.
- 496 14. **Pascual A, Cachafeiro A, Funk ML, Fiscus SA.** 2002. Comparison of an assay using signal
497 amplification of the heat-dissociated p24 antigen with the Roche Monitor human
498 immunodeficiency virus RNA assay. *J Clin Microbiol* **40**:2472-2475.
- 499 15. **Stevens G, Rekhviashvili N, Scott LE, Gonin R, Stevens W.** 2005. Evaluation of two
500 commercially available, inexpensive alternative assays used for assessing viral load in

- 501 a cohort of human immunodeficiency virus type 1 subtype C-infected patients from
502 South Africa. *J Clin Microbiol* **43**:857-861.
- 503 16. **Brinkhof MW, Boni J, Steiner F, Tomasik Z, Nadal D, Schupbach J.** 2006. Evaluation of
504 p24-based antiretroviral treatment monitoring in pediatric HIV-1 infection: prediction
505 of the CD4+ T-cell changes between consecutive visits. *J Acquir Immune Defic Syndr*
506 **41**:557-562.
- 507 17. **Morand-Joubert L, Costagliola D, Bludau H, Petit JC, Lefrere JJ.** 1994. Predicting
508 progression of HIV disease: usefulness of acid-dissociated p24 antigen. *J Acquir*
509 *Immune Defic Syndr* (1988) **7**:676-680.
- 510 18. **Sterling TR, Hoover DR, Astemborski J, Vlahov D, Bartlett JG, Schupbach J.** 2002.
511 Heat-denatured human immunodeficiency virus type 1 protein 24 antigen: prognostic
512 value in adults with early-stage disease. *J Infect Dis* **186**:1181-1185.
- 513 19. **Brown AE, Vahey MT, Zhou SY, Chung RC, Ruiz NM, Hofheinz D, Lane JR, Mayers DL.**
514 1995. Quantitative relationship of circulating p24 antigen with human
515 immunodeficiency virus (HIV) RNA and specific antibody in HIV-infected subjects
516 receiving antiretroviral therapy. The RV43 Study Group. *J Infect Dis* **172**:1091-1095.
- 517 20. **Rissin DM, Kan CW, Campbell TG, Howes SC, Fournier DR, Song L, Piech T, Patel PP,**
518 **Chang L, Rivnak AJ, Ferrell EP, Randall JD, Provuncher GK, Walt DR, Duffy DC.** 2010.
519 Single-molecule enzyme-linked immunosorbent assay detects serum proteins at
520 subfemtomolar concentrations. *Nat Biotechnol* **28**:595-599.
- 521 21. **Wilson DH, Rissin DM, Kan CW, Fournier DR, Piech T, Campbell TG, Meyer RE,**
522 **Fishburn MW, Cabrera C, Patel PP, Frew E, Chen Y, Chang L, Ferrell EP, von Einem V,**
523 **McGuigan W, Reinhardt M, Sayer H, Vielsack C, Duffy DC.** 2016. The Simoa HD-1
524 Analyzer: A Novel Fully Automated Digital Immunoassay Analyzer with Single-
525 Molecule Sensitivity and Multiplexing. *J Lab Autom* **21**:533-547.
- 526 22. **Passaes CPB, Bruel T, Decalf J, David A, Angin M, Monceaux V, Muller-Trutwin M,**
527 **Noel N, Bourdic K, Lambotte O, Albert ML, Duffy D, Schwartz O, Saez-Cirion A.** 2017.
528 Ultrasensitive HIV-1 p24 Assay Detects Single Infected Cells and Differences in
529 Reservoir Induction by Latency Reversal Agents. *J Virol* **91**.
- 530 23. **Cabrera C, Chang L, Stone M, Busch M, Wilson DH.** 2015. Rapid, Fully Automated
531 Digital Immunoassay for p24 Protein with the Sensitivity of Nucleic Acid Amplification
532 for Detecting Acute HIV Infection. *Clin Chem* **61**:1372-1380.
- 533 24. **Stone M, Bainbridge J, Sanchez AM, Keating SM, Pappas A, Rountree W, Todd C,**
534 **Bakkour S, Manak M, Peel SA, Coombs RW, Ramos EM, Shriver MK, Contestable P,**
535 **Nair SV, Wilson DH, Stengelin M, Murphy G, Hewlett I, Denny TN, Busch MP.** 2018.
536 Comparison of Detection Limits of Fourth- and Fifth-Generation Combination HIV
537 Antigen-Antibody, p24 Antigen, and Viral Load Assays on Diverse HIV Isolates. *J Clin*
538 *Microbiol* **56**.
- 539 25. **Schupbach J, Flepp M, Pontelli D, Tomasik Z, Luthy R, Boni J.** 1996. Heat-mediated
540 immune complex dissociation and enzyme-linked immunosorbent assay signal
541 amplification render p24 antigen detection in plasma as sensitive as HIV-1 RNA
542 detection by polymerase chain reaction. *AIDS* **10**:1085-1090.
- 543 26. **Steindl F, Armbruster C, Pierer K, Purtscher M, Katinger HW.** 1998. A simple and
544 robust method for the complete dissociation of HIV-1 p24 and other antigens from
545 immune complexes in serum and plasma samples. *J Immunol Methods* **217**:143-151.
- 546 27. **Azar P, Mejia JE, Cenac C, Shaiykova A, Youness A, Laffont S, Essat A, Izopet J, Passaes**
547 **C, Muller-Trutwin M, Delobel P, Meyer L, Guery JC.** 2020. TLR7 dosage polymorphism
548 shapes interferogenesis and HIV-1 acute viremia in women. *Jci Insight* **5**.
- 549 28. **Delagreverie HM, Bauduin C, De Castro N, Grinsztejn B, Chevrier M, Jouenne F,**
550 **Mourah S, Kalidi I, Pilotto JH, Brites C, Tregnago Barcellos N, Amara A, Wittkop L,**
551 **Molina JM, Delaugerre C.** 2020. Impact of Raltegravir or Efavirenz on Cell-Associated
552 Human Immunodeficiency Virus-1 (HIV-1) Deoxyribonucleic Acid and Systemic

- 553 Inflammation in HIV-1/Tuberculosis Coinfected Adults Initiating Antiretroviral
554 Therapy. *Open Forum Infect Dis* **7**:ofz549.
- 555 29. **Chang L, Song LN, Fournier DR, Kan CW, Patel PP, Ferrell EP, Pink BA, Minnehan KA,**
556 **Hanlon DW, Duffy DC, Wilson DH.** 2013. Simple diffusion-constrained immunoassay
557 for p24 protein with the sensitivity of nucleic acid amplification for detecting acute HIV
558 infection. *Journal of Virological Methods* **188**:153-160.
- 559 30. **Kuller LH, Tracy R, Belloso W, De Wit S, Drummond F, Lane HC, Ledergerber B,**
560 **Lundgren J, Neuhaus J, Nixon D, Paton NI, Neaton JD, Grp ISS.** 2008. Inflammatory
561 and Coagulation Biomarkers and Mortality in Patients with HIV Infection. *Plos*
562 *Medicine* **5**:1496-1508.
- 563 31. **Ledwaba L, Tavel JA, Khabo P, Maja P, Qin J, Sangweni P, Liu X, Follmann D, Metcalf**
564 **JA, Orsega S, Baseler B, Neaton JD, Lane HC, Team PPB.** 2012. Pre-ART Levels of
565 Inflammation and Coagulation Markers Are Strong Predictors of Death in a South
566 African Cohort with Advanced HIV Disease. *Plos One* **7**.
- 567 32. **Wada NI, Bream JH, Martinez-Maza O, Macatangay B, Galvin SR, Margolick JB,**
568 **Jacobson LP.** 2016. Inflammatory Biomarkers and Mortality Risk Among HIV-
569 Suppressed Men: A Multisite Prospective Cohort Study. *Clinical Infectious Diseases*
570 **63**:984-990.
- 571 33. **Deeks SG, Tracy R, Douek DC.** 2013. Systemic Effects of Inflammation on Health during
572 Chronic HIV Infection. *Immunity* **39**:633-645.
- 573 34. **Kalayjian RC, Machekano RN, Rizk N, Robbins GK, Gandhi RT, Rodriguez BA, Pollard**
574 **RB, Lederman MM, Landay A.** 2010. Pretreatment Levels of Soluble Cellular Receptors
575 and Interleukin-6 Are Associated with HIV Disease Progression in Subjects Treated with
576 Highly Active Antiretroviral Therapy. *Journal of Infectious Diseases* **201**:1796-1805.
- 577 35. **Boulware DR, Hullsiek KH, Puroon CE, Rupert A, Baker JV, French MA, Bohjanen PR,**
578 **Novak RM, Neaton JD, Sereti I, Grp IS.** 2011. Higher Levels of CRP, D-dimer, IL-6, and
579 Hyaluronic Acid Before Initiation of Antiretroviral Therapy (ART) Are Associated With
580 Increased Risk of AIDS or Death. *Journal of Infectious Diseases* **203**:1637-1646.
- 581 36. **Roberts L, Passmore JAS, Williamson C, Little F, Bebell LM, Mlisana K, Burgers WA,**
582 **van Loggerenberg F, Walzl G, Siawaya JFD, Karim QA, Karim SSA.** 2010. Plasma
583 cytokine levels during acute HIV-1 infection predict HIV disease progression. *Aids*
584 **24**:819-831.
- 585 37. **Liovat AS, Rey-Cuille MA, Lecuroux C, Jacquelin B, Girault I, Petitjean G, Zitoun Y,**
586 **Venet A, Barre-Sinoussi F, Lebon P, Meyer L, Sinet M, Muller-Trutwin M.** 2012. Acute
587 Plasma Biomarkers of T Cell Activation Set-Point Levels and of Disease Progression in
588 HIV-1 Infection. *Plos One* **7**.
- 589 38. **Maina EK, Abana CZ, Bukusi EA, Sedegah M, Lartey M, Ampofo WK.** 2016. Plasma
590 concentrations of transforming growth factor beta 1 in non-progressive HIV-1
591 infection correlates with markers of disease progression. *Cytokine* **81**:109-116.
- 592 39. **Pasternak AO, DeMaster LK, Kootstra NA, Reiss P, O'Doherty U, Berkhout B.** 2016.
593 Minor Contribution of Chimeric Host-HIV Readthrough Transcripts to the Level of HIV
594 Cell-Associated gag RNA. *Journal of Virology* **90**:1148-1151.
- 595 40. **Akiyama H, Miller CM, Ettinger CR, Belkina AC, Snyder-Cappione JE, Gummuluru S.**
596 2018. HIV-1 intron-containing RNA expression induces innate immune activation and
597 T cell dysfunction. *Nature Communications* **9**.
- 598 41. **McCauley SM, Kim K, Nowosielska A, Dauphin A, Yurkovetskiy L, Diehl WE, Luban J.**
599 2018. Intron-containing RNA from the HIV-1 provirus activates type I interferon and
600 inflammatory cytokines. *Nature Communications* **9**.
- 601 42. **Olson A, Coote C, Snyder-Cappione JE, Lin N, Sagar M.** 2020. HIV-1 transcription but
602 not intact provirus levels are associated with systemic inflammation. *J Infect Dis*
603 doi:10.1093/infdis/jiaa657.

- 604 43. **Appay V, Sauce D.** 2008. Immune activation and inflammation in HIV-1 infection:
605 causes and consequences. *Journal of Pathology* **214**:231-241.
- 606 44. **Schupbach J, Boni J, Bisset LR, Tomasik Z, Fischer M, Gunthard HF, Ledergerber B,**
607 **Opravil M, Swiss HIVCS.** 2003. HIV-1 p24 antigen is a significant inverse correlate of
608 CD4 T-cell change in patients with suppressed viremia under long-term antiretroviral
609 therapy. *J Acquir Immune Defic Syndr* **33**:292-299.
- 610 45. **Schupbach J.** 2003. Viral RNA and p24 antigen as markers of HIV disease and
611 antiretroviral treatment success. *International Archives of Allergy and Immunology*
612 **132**:196-209.
- 613 46. **Pollack RA, Jones RB, Perteua M, Bruner KM, Martin AR, Thomas AS, Capoferri AA,**
614 **Beg SA, Huang SH, Karandish S, Hao HP, Halper-Stromberg E, Yong PC, Kovacs C,**
615 **Benko E, Siliciano RF, Ho YC.** 2017. Defective HIV-1 Proviruses Are Expressed and Can
616 Be Recognized by Cytotoxic T Lymphocytes, which Shape the Proviral Landscape. *Cell*
617 *Host & Microbe* **21**:494-+.
- 618 47. **Imamichi H, Dewar RL, Adelsberger JW, Rehm CAHloC, D-dimer, IL-6, and hyaluronic**
619 **acid before initiation of antiretroviral therapy (ART) are associated with increased**
620 **risk of AIDS or death, O'Doherty U, Paxinos EE, Fauci AS, Lane HC.** 2016. Defective
621 HIV-1 proviruses produce novel protein-coding RNA species in HIV-infected patients
622 on combination antiretroviral therapy. *Proceedings of the National Academy of*
623 *Sciences of the United States of America* **113**:8783-8788.
- 624 48. **Imamichi H, Smith M, Adelsberger JW, Izumi T, Scrimieri F, Sherman BT, Rehm CA,**
625 **Imamichi T, Pau A, Catalfamo M, Fauci AS, Lane HC.** 2020. Defective HIV-1 proviruses
626 produce viral proteins. *Proceedings of the National Academy of Sciences of the United*
627 *States of America* **117**:3704-3710.
- 628 49. **Deeks SG.** 2012. HIV: Shock and kill. *Nature* **487**:439-440.
- 629 50. **Novelli S, Lecuroux C, Avettand-Fenoel V, Seng R, Essat A, Morlat P, Viard JP,**
630 **Rouzioux C, Meyer L, Goujard C.** 2018. Long-term Therapeutic Impact of the Timing of
631 Antiretroviral Therapy in Patients Diagnosed With Primary Human Immunodeficiency
632 Virus Type 1 Infection. *Clin Infect Dis* **66**:1519-1527.
- 633 51. **Grinsztejn B, De Castro N, Arnold V, Veloso VG, Morgado M, Pilotto JH, Brites C,**
634 **Madruca JV, Barcellos NT, Santos BR, Vorsatz C, Fagard C, Santini-Oliveira M, Patey**
635 **O, Delaugerre C, Chene G, Molina JM, group ARTs.** 2014. Raltegravir for the treatment
636 of patients co-infected with HIV and tuberculosis (ANRS 12 180 Replate TB): a
637 multicentre, phase 2, non-comparative, open-label, randomised trial. *Lancet Infect Dis*
638 **14**:459-467.
- 639 52. **Schupbach J, Boni J.** 1993. Quantitative and sensitive detection of immune-complexed
640 and free HIV antigen after boiling of serum. *J Virol Methods* **43**:247-256.
- 641 53. **Lillo FB, Cao Y, Concedi DR, Varnier OE.** 1993. Improved detection of serum HIV p24
642 antigen after acid dissociation of immune complexes. *AIDS* **7**:1331-1336.
- 643 54. **Miles SA, Balden E, Magpantay L, Wei L, Leiblein A, Hofheinz D, Toedter G, Stiehm**
644 **ER, Bryson Y.** 1993. Rapid serologic testing with immune-complex-dissociated HIV p24
645 antigen for early detection of HIV infection in neonates. *Southern California Pediatric*
646 *AIDS Consortium. N Engl J Med* **328**:297-302.
- 647 55. **Fenouillet E, Blanes N, Coutellier A, Gluckman JC.** 1993. Relationship between anti-
648 p24 antibody levels and p24 antigenemia in HIV-infected patients. *AIDS Res Hum*
649 *Retroviruses* **9**:1251-1255.
- 650 56. **Avettand-Fenol V, Chaix ML, Blanche S, Burgard A, Floch C, Toure K, Allemon MC,**
651 **Warszawski J, Rouzioux C, ANRS FPCS.** 2009. LTR Real-Time PCR for HIV-1 DNA
652 Quantitation in Blood Cells for Early Diagnosis in Infants Born to Seropositive Mothers
653 Treated in HAART Area (ANRS CO 01). *Journal of Medical Virology* **81**:217-223.
- 654 57. **Goujard C, Bonarek M, Meyer L, Bonnet F, Chaix ML, Deveau C, Sinet M, Galimand J,**
655 **Delfraissy JF, Venet A, Rouzioux C, Morlat P, Agence Nationale de Recherche sur le**

656
657
658
659

Sida PSG. 2006. CD4 cell count and HIV DNA level are independent predictors of disease progression after primary HIV type 1 infection in untreated patients. Clin Infect Dis **42**:709-715.

660 **Figure legends**

661 **Figure 1. Acid dissociation to disrupt antigen-antibodies immune-complexes is**
662 **compatible with ultrasensitive p24 quantification. A)** Bars denote the average
663 enzymes per beads (AEB) for: 0; 0.01; 0.02; 0.07; 0.24; 0.67; 2.39 and 13.17 pg/mL of
664 p24 standards tested in different experimental conditions for immune-complex
665 dissociation, as follows: non-treated (black), heat-mediated (red), heat-mediated with
666 SDS and DTPA (orange) and acid dissociation with Glycine-HCl pH 1.8 (blue) or pH 2.5
667 (violet). **B)** Four-parameter logistic regression curves obtained from different
668 experimental conditions for immune-complex dissociation, as follows: non-treated
669 (black), heat-mediated (red), heat-mediated with SDS and DTPA (orange) and acid
670 dissociation with Glycine-HCl pH 1.8 (blue) or pH 2.5 (violet). **C)** AEB values obtained
671 for Standard A (p24 = 0 pg/mL, negative control) (dark gray), Standard A + Triton X-100
672 2% (light gray), Sample diluent manufactured by Quanterix (dark blue), PBS 1x (light
673 blue) and the solution of 7mM SDS + 1.5 mM DTPA pH 7.2 (orange). Dashed line
674 indicates the median value obtained for Standard A condition. **D)** AEB values obtained
675 from plasma samples from HIV-1 negative donors non-treated (gray), after heat-
676 mediated dissociation with SDS and DTPA (orange) and after acid dissociation with
677 Glycine-HCl pH 1.8 (green). Dashed line indicates the median value obtained for non-
678 treated condition.

679

680 **Figure 2. Sensitivity of ultrasensitive p24 quantification in plasma samples. A)** p24
681 signal in plasma samples of HIV-1 negative donors. Samples received acid dissociation
682 treatment with Glycine-HCl pH 1.8. Median is indicated by black line. Dashed line
683 denotes the cutoff value of 0.024 pg/mL calculated as 2.5 standard deviations from the

684 mean of p24 signal in the plasma from HIV negative donors. **B)** p24 levels detected in
685 plasma samples from HIV-1 infected individuals non-treated for immune-complex
686 dissociation (NT, open symbols) and after acid dissociation with Glycine-HCl pH 1.8
687 (ICD, green dots). **C)** Relationship between positive p24 and HIV-RNA in plasma
688 samples from HIV-1 infected individuals. Correlation was calculated using a
689 nonparametric Spearman test.

690

691 **Figure 3. Ultrasensitive p24 detection in a cohort of acutely HIV infected individuals.**

692 **A)**

693 *Left panel:* p24 levels in plasma samples from 92 individuals acutely infected with HIV-
694 1 (ANRS PRIMO Cohort). Acid dissociation with Glycine-HCl pH 1.8 was used to disrupt
695 immune-complexes. Samples below the limit of quantification were given an arbitrary
696 value of 0.024 pg/mL based on the established cutoff. *Right panel:* HIV-RNA levels in
697 plasma samples from the same 92 individuals acutely infected with HIV-1. Median is
698 indicated by black line. Relationship between **B)** p24 and HIV-RNA, **C)** p24 and HIV-DNA
699 and **D)** p24 and CD4+ T cell counts in plasma samples from individuals acutely infected
700 with HIV-1. Correlations were calculated using a nonparametric Spearman test.

701

702 **Figure 4. Ultrasensitive p24 detection in a cohort of chronically HIV infected**

703 **individuals.** *Left panel:* p24 levels in plasma samples from 137 individuals chronically
704 infected with HIV-1 (ANRS 12180 Replate TB trial). Acid dissociation with Glycine-HCl
705 pH 1.8 was used to disrupt immune-complexes. Samples below the limit of
706 quantification were given an arbitrary value of 0.024 pg/mL based on the established
707 cutoff. *Right panel:* HIV-RNA levels in plasma samples from the same 137 individuals

708 chronically infected with HIV-1. Median is indicated by black line. Relationship
709 between **B)** p24 and HIV-RNA, **C)** p24 and HIV-DNA and **D)** p24 and CD4+ T cell counts
710 in plasma samples from individuals chronically infected with HIV-1. Correlations were
711 calculated using a nonparametric Spearman test.

712

713 **Figure 5. p24 levels in patients chronically infected with HIV prior to and after cART**

714 **initiation. A)** p24 levels in plasma samples from 108 individuals chronically infected
715 with HIV-1 (ANRS 12180 Replate TB trial) prior to antiretroviral treatment initiation
716 (W0) and longitudinally monitored at weeks 24 and 48 after cART. Baseline (W0)
717 differences between patients who presented detectable or undetectable p24 levels 48
718 weeks after cART initiation: **B)** HIV-RNA levels (left panel), p24 (middle panel) and the
719 ratio HIV-RNA/p24 (right panel), **C)** HIV-DNA, **D)** CD4+ T cell counts. Median is indicated
720 by black lines. ** <0.01, **** < 0.0001.

721

722 **Figure 6. Association of p24 levels and inflammation markers in patients chronically**

723 **infected with HIV prior to and after cART initiation. A)** Relationship between p24 and
724 D-dimers (Left panel) and IFN α (Right panel) in plasma samples from 137 individuals
725 chronically infected with HIV-1 (ANRS 12180 Replate TB trial) prior to cART initiation
726 (W0). Correlations were calculated using a nonparametric Spearman test. Baseline
727 (W0) differences between 108 patients who presented detectable or undetectable p24
728 levels 48 weeks after cART initiation: **B)** IFN α , **C)** CRP, **D)** D-dimers, and **E)** IL-6. Median
729 is indicated by black lines. * <0.05, ** <0.01.

730 **Table 1.** Baseline demographic and clinical characteristics of the participants* enrolled in the ANRS 12180 Reflate TB trial with _{us}p24 positive or negative at W48 after cART
 731 initiation

Characteristics		Frequency		p-value
		p24+ at W48 (n=19)	p24- at W48 (n=89)	
Age (median and IQR)		32 [27-42]	38 [31-44]	0.1607
Gender	Male	13 (68.4%)	63 (70.8%)	0.8376
	Female	6 (31.6%)	26 (29.2%)	
cART arm	Efavirenz	8 (42.1%)	32 (36.0%)	0.5580
	Raltegravir 400mg	4 (21.1%)	30 (33.7%)	
	Raltegravir 800mg	7 (36.8%)	27 (30.3%)	
Response to TB treatment	Cure	3 (15.8%)	13 (14.6%)	0.8921
	Treatment completed	16 (84.2%)	75 (84.3%)	
	Treatment failure	0 (0%)	1 (1.1%)	
IRIS	Yes	1 (5.3%)	9 (10.1%)	0.5080
	No	18 (94.7%)	80 (89.9%)	
Resistance to ARV treatment (follow up)	Yes/Potential	3 (15.8%)	11 (12.4%)	0.6862
	No	16 (84.2%)	78 (87.6%)	
Resistance to ARV treatment (W48)	Yes/Potential	1 (5.3%)	2 (2.2%)	0.4677
	No	18 (94.7%)	87 (97.8%)	
AUC viral load (median and IQR)		255,302 [77,868-1,002,300]	180,736 [73,990-745,161]	0.6597
Frequency detectable viral load (>50 copies/mL)	W4	9 (47.4%)	50 (56.2%)	0.4837
	W12	4 (21.1%)	18 (20.2%)	0.9352
	W24	3 (16.7%)	12 (13.5%)	0.7227
	W48	6 (31.6%)	8 (9%)	0.0078

732 * Participants for whom samples prior to cART initiation and at 24 and 48 weeks after cART initiation were available (108 participants).

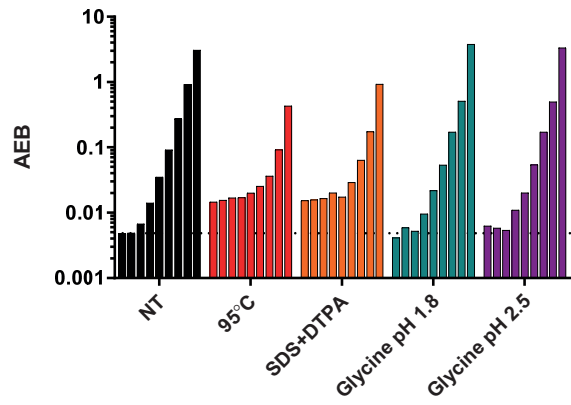
733 Response to TB treatment was defined as: Cure: Patient who is sputum smear-negative in the last month of treatment and on at least one previous occasion; Treatment completed:

734 Patient who has completed treatment but who does not meet the criteria to be classified as a cure or a failure; Treatment failure : patient who is sputum smear-positive at 5 months or

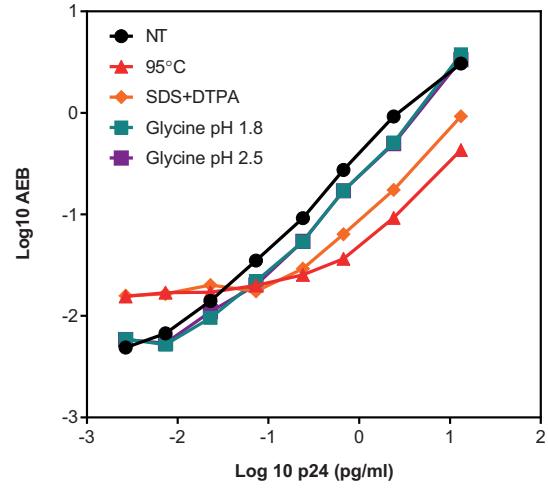
735 later during treatment and also a patient who was initially smear-negative before starting treatment and became smear-positive after completing the initial phase of treatment.

Figure 1

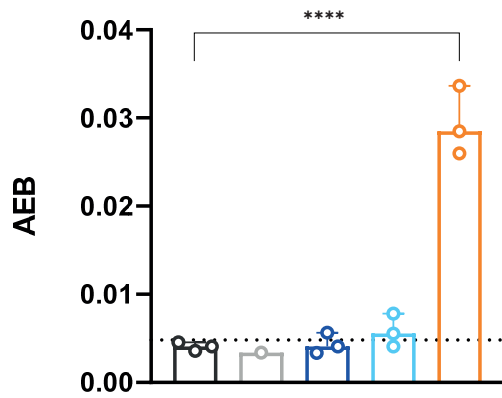
A



B

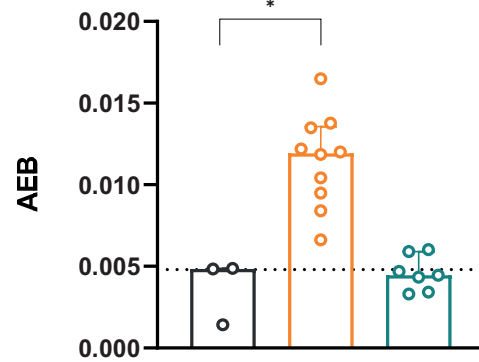


C



□ STD A
 □ STD A + Triton X-100 2%
 □ Sample diluent
 □ PBS
 □ SDS+DTPA

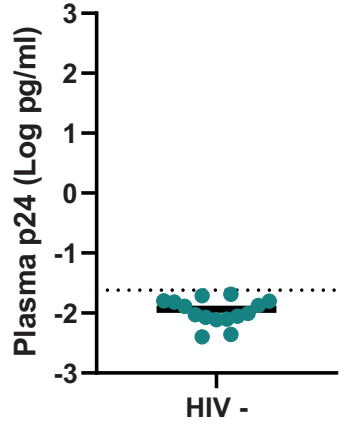
D



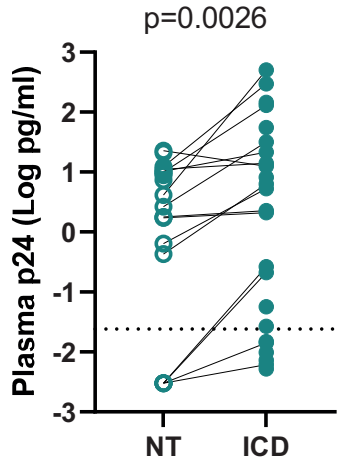
□ HIV- non-treated
 □ HIV- SDS+DTPA
 □ HIV- Glycine pH1.8

Figure 2

A



B



C

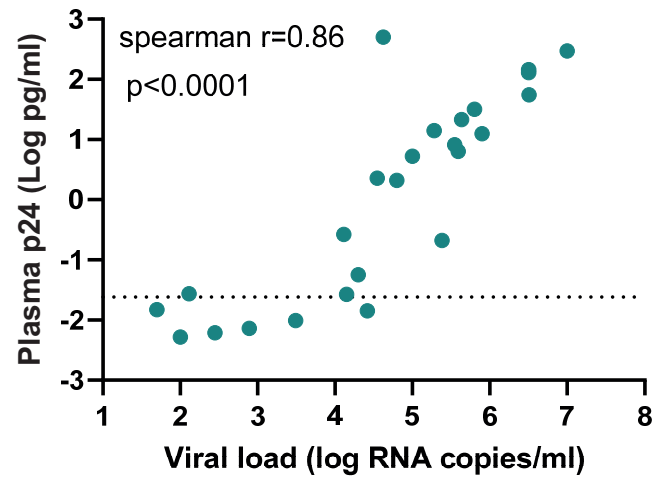


Figure 3

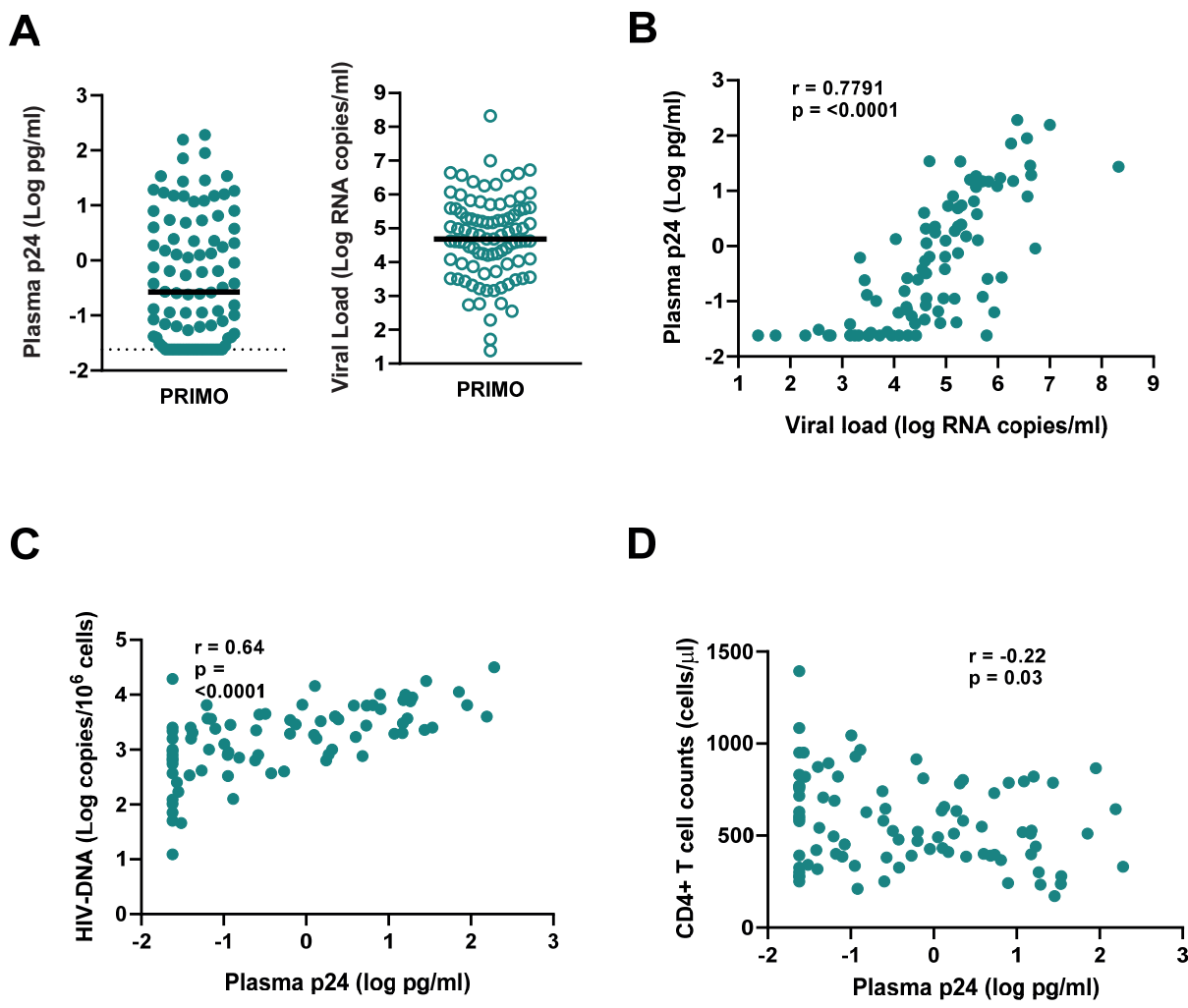
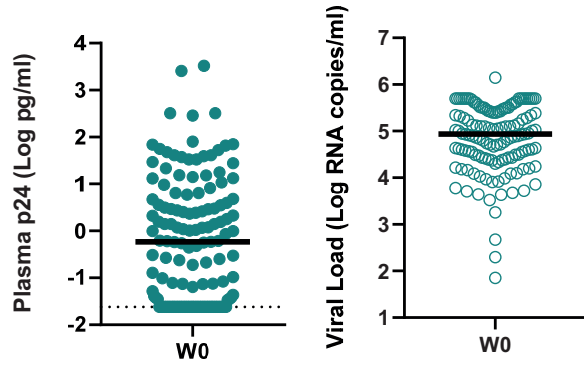
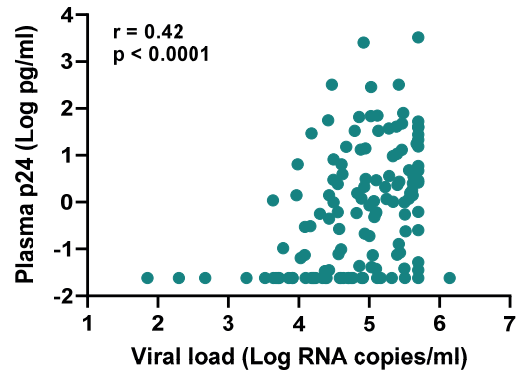


Figure 4

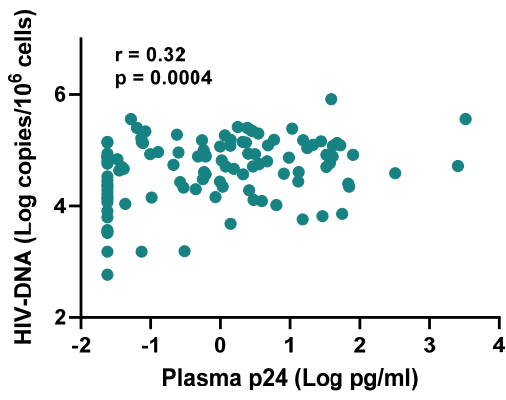
A



B



C



D

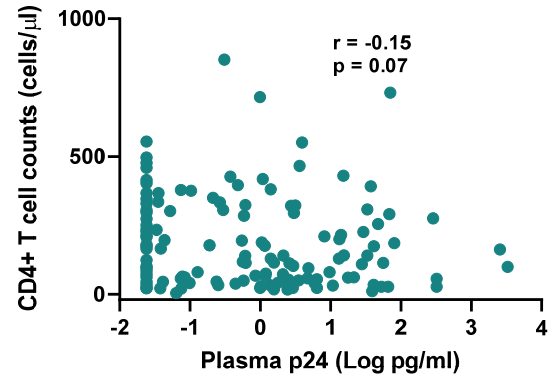
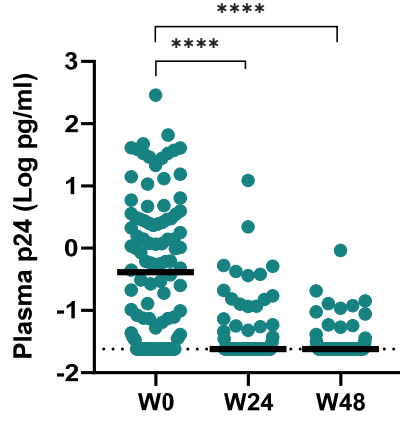
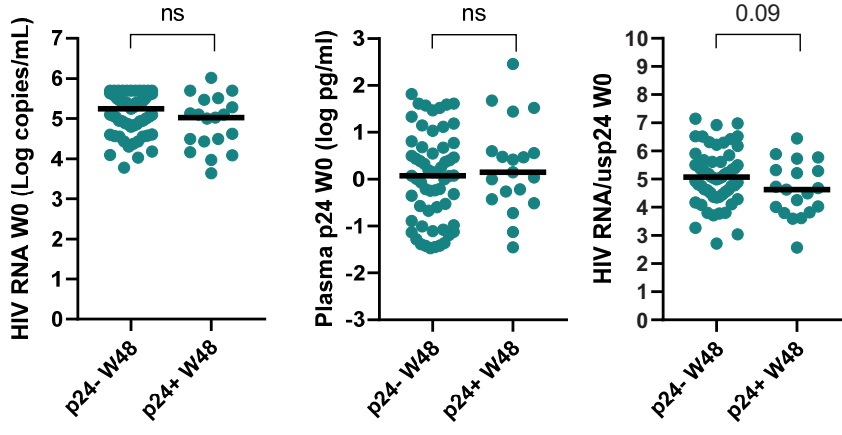


Figure 5

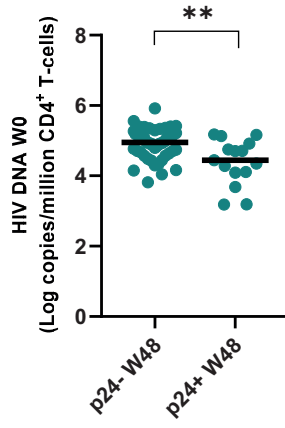
A



B



C



D

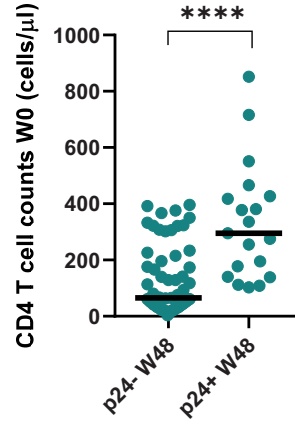
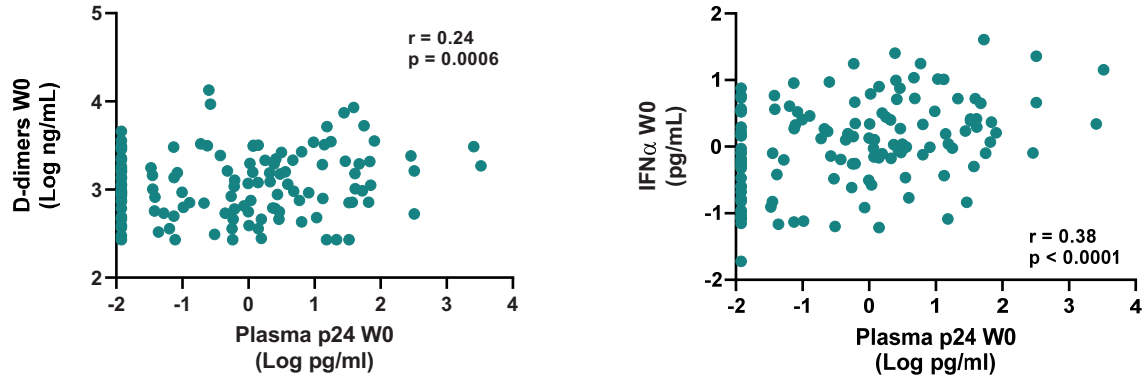
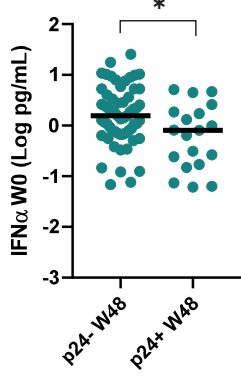


Figure 6

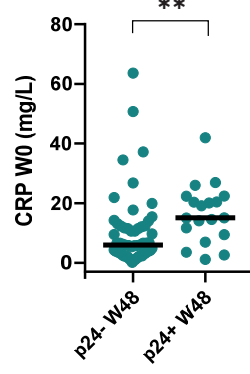
A



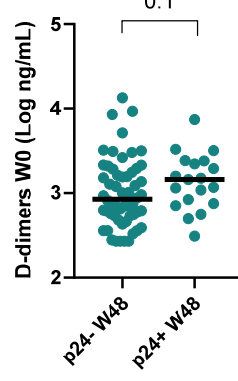
B



C



D



E

