

A Journal of the Gesellschaft Deutscher Chemiker

Angewandte Chemie

GDCh

International Edition

www.angewandte.org

Accepted Article

Title: Genome mining based discovery of the cyclic peptide tolypamide and TolF, a Ser/Thr forward O-prenyltransferase

Authors: Brandon I Morinaka, Eric W Schmidt, Mugilarasi Purushothaman, Snigdha Sarkar, Maho Morita, and Muriel Gugger

This manuscript has been accepted after peer review and appears as an Accepted Article online prior to editing, proofing, and formal publication of the final Version of Record (VoR). This work is currently citable by using the Digital Object Identifier (DOI) given below. The VoR will be published online in Early View as soon as possible and may be different to this Accepted Article as a result of editing. Readers should obtain the VoR from the journal website shown below when it is published to ensure accuracy of information. The authors are responsible for the content of this Accepted Article.

To be cited as: *Angew. Chem. Int. Ed.* 10.1002/anie.202015975

Link to VoR: <https://doi.org/10.1002/anie.202015975>

COMMUNICATION

Genome mining based discovery of the cyclic peptide tolypamide and TolF, a Ser/Thr forward O-prenyltransferaseMugilarasi Purushothaman^{†[a]}, Snigdha Sarkar^{†[b]}, Maho Morita^[c], Muriel Gugger^[d] and Eric W. Schmidt^{*[b]}, Brandon I. Morinaka^{*[a]}

[a] M. Purushothaman; Prof. Dr. B. I. Morinaka
Department of Pharmacy
National University of Singapore
18 Science Dr 4, Singapore 117543 (Singapore)
E-mail: phambi@nus.edu.sg

[b] S. Sarkar; Prof. Dr. E. W. Schmidt
Department of Medicinal Chemistry
University of Utah
Salt Lake City, Utah 84112 (USA)
E-mail: ews1@utah.edu

[c] M. Morita
Laboratory of Chemical Biology of Natural Products, Graduate School of Bioagricultural Sciences
Nagoya University
Furo-cho, Chikusa, Nagoya 464-8601 (Japan)

[d] M. Gugger
Institut Pasteur, Collection des Cyanobactéries
Département de Microbiologie, Paris 75015 (France)

[†]These authors contributed equally.

^{*}To whom correspondence should be addressed. ews1@utah.edu, phambi@nus.edu.sg

Supporting information for this article is given via a link at the end of the document.

Abstract: Cyanobactins comprise a widespread group of peptide metabolites produced by cyanobacteria that are often diversified by post-translational prenylation. Several enzymes have been identified in cyanobactin biosynthetic pathways that carry out chemically diverse prenylation reactions, representing a resource for the discovery of post-translational alkylating agents. Here, genome mining was used to identify orphan cyanobactin prenyltransferases, leading to isolation of tolypamide from the freshwater cyanobacterium, *Tolypothrix* sp. The structure of tolypamide was confirmed by spectroscopic methods, degradation, and enzymatic total synthesis. Tolypamide is forward prenylated on a threonine residue, representing an unprecedented post-translational modification. Biochemical characterization of cognate enzyme TolF revealed a prenyltransferase with strict selectivity for forward O-prenylation of serine or threonine, but with relaxed substrate selectivity for flanking peptide sequences. Since cyanobactin pathways often exhibit exceptionally broad substrate tolerance, these enzymes represent robust tools for synthetic biology.

Over the past decade, peptides have secured a stronghold in the pharmaceutical market due to numerous advantages over traditional small molecule drugs.^[1] Bioactive peptides are effective in targeting protein-protein interactions, have low incidences of off-target effects and cytotoxicity. However, these properties are sometimes compromised by their poor bioavailability caused by proteolytic degradation, rapid renal clearance and failure to cross cellular membranes. The bare peptides can be chemically modified in multiple ways to boost their therapeutic efficacy.^[2] One means to improve membrane permeability is lipidation or prenylation, but the current methods for selective enzymatic peptide alkylation are relatively limited.^[3]

Prenyltransferase enzymes catalyze the intermolecular transfer of prenyl groups from isoprene donors to a variety of acceptors.^[4] On peptides and proteins, these acceptors include electron-rich positions on aromatic rings and heteroatoms. The reaction is initiated by the generation of the allylic carbocation

from prenyl diphosphate precursor, followed by nucleophilic attack by an electron rich group to produce the final prenylated product. A prenylation reaction can have multiple outcomes depending on isomerization of the intermediate carbocation, regioselectivity, chemoselectivity, and rearrangement of the preliminary product. As a result, the prenyltransferase enzyme family is capable of generating structurally diverse products from a limited number of precursors.

Cyanobactins are a chemically diverse class of ribosomally synthesized and posttranslationally modified peptide natural products (RiPPs)^[5] isolated from cyanobacteria and have demonstrated anticancer and antimalarial activities.^[6] Characteristic posttranslational modifications of this class are macrocyclization, heterocyclization (to form thiazole, oxazole, thiazoline, and oxazoline), and prenylation. Cyanobactin pathways show promise in biotechnology because many of the tailoring enzymes exhibit exceptionally relaxed substrate selectivity.^[6, 7]

A significant subset of cyanobactins are tailored by the F-type prenyltransferases, which append an isoprene unit to Ser, Thr, Tyr and Trp residues or at the N- or C-terminus of linear peptides.^[6b, 6c, 8] These prenyltransferases have the same secondary structural motifs as ABBA type enzymes with a barrel of 10 anti-parallel β -sheets surrounded by a ring of 10 solvent exposed α -helices.^[9] The interior of the active site is similar to other prenyltransferases, exhibiting strict selectivity for the prenyl donor, amino acid acceptor, and the direction of prenylation at either C-1 (forward) or C-3 (reverse) position of the dimethylallyl cation.^[8b, 10] Although the prenyl donor is usually derived from dimethylallylpyrophosphate, one enzyme using geranyl pyrophosphate has been characterized.^[11] In comparison to other prenyltransferases with capped active sites that sequester small substrates, cyanobactin F enzymes have a large, open hydrophobic cavity adjacent to the active site, which allows them to accommodate larger peptide substrates.^[8b] This peculiarity also

COMMUNICATION

gives the cyanobactin F enzymes strict selectivity for the prenylation donor and acceptor amino acid, but often

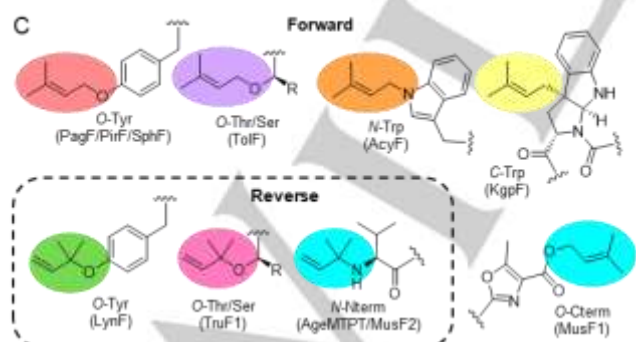
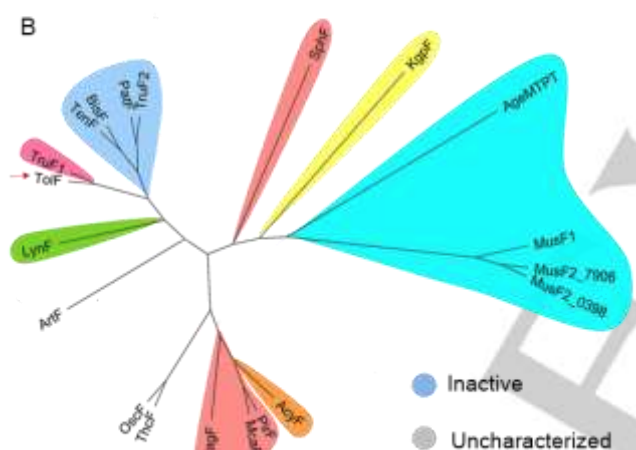
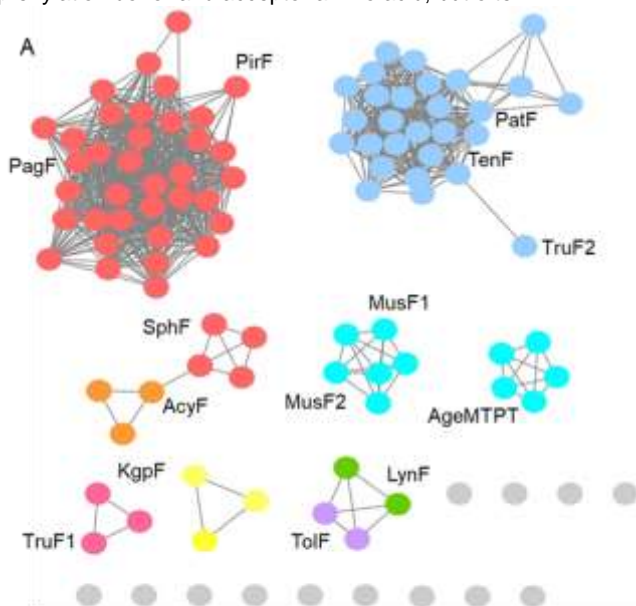


Figure 1. Sequence-function and chemical space of cyanobactin prenyltransferases. A) Sequence similarity network showing the clustering of cyanobactin prenyltransferases according to their regiospecificity using an alignment score threshold of 86. B) Bayesian phylogenetic tree of TolF with previously characterized prenyltransferases show TolF falls in the same clade as TruF1, showing similar substrate preference. C) Regioselective and chemoselective modes of prenylation carried out natively by characterized cyanobactin prenyltransferases. Reverse and forward prenylation patterns are represented within and outside the dashed box, respectively. The type of transformation is indicated by the atom (italicized) followed by the residue, Nterm or Cterm. The enzyme is shown in parenthesis. The R-group = Me and H for Thr and Ser, respectively.

extremely relaxed selectivity for the remainder of the peptide. This has proven to be useful in the biotechnological generation of diverse, alkylated peptides.^[6b, 6c] In addition to these enzymes, a major fraction of F enzyme family exemplified by PatF appear to be essential for biosynthesis, but are inactive and may serve a non-prenylating role in the pathways.^[12] Prenylation is usually the last step of the cyanobactin biosynthetic pathway and in presence of inactive prenyltransferase genes, non-prenylated cyclic peptides are observed as mature natural products.^[13]

TruF1 was the first cyanobactin prenyltransferase to be unambiguously characterized both *in vivo* and *in vitro*.^[8f, 13] However, the poor solubility and low *in vitro* activity of TruF1 prevented extensive structural characterization. TruF1 is the only identified prenyltransferase that modifies Ser and Thr hydroxyl groups, prenylating them with DMAPP in the reverse orientation. As such, there remains a significant gap in the cyanobactin chemical space, where there is no well-behaved, promiscuous catalyst for prenylation of Ser and Thr residues. Here, we analyzed the prenyltransferase sequence-function space to identify an orphan F enzyme bearing sequence similarity to TruF1. The pathway was de-orphanized through the identification of a novel cyanobactin natural product, tolypamide (**1**). The cyclic peptide was forward-prenylated on Thr, representing a previously unknown post-translational modification. The TolF prenyltransferase was characterized *in vitro*, demonstrating its selectivity for Ser or Thr prenylation in the context of several peptide sequences. TolF represents a robustly expressed and stable enzyme useful in the modification of Ser and Thr residues.

To investigate the sequence-function and chemical space of cyanobactin prenylation, a sequence similarity network (SSN) was generated for cyanobactin prenyltransferase InterPro family (IPR031037, TIGR04445) (Figure 1A).^[14] This resulted in two large clusters, one containing inactive enzymes (PatF, TruF2, and TenF) and the other with enzymes catalyzing forward O-prenylation on Tyr (PagF and PirF).^[6b, 11, 13, 15] The SSN also contained smaller clusters representing other regiospecific transformations such as N-prenylation on tryptophan (AcyF), prenylation on the terminal amino acid (AgeMTPT, MusF1, MusF2), C-prenylation on tryptophan (KgpF) and reverse O-prenylation on Tyr (LynF) (Figure 1C).^[5b, 8a, 8c-e] Often, clustering is diagnostic for the function of uncharacterized enzymes, and indeed all characterized enzymes fell into clusters predictive of their chemistry. However, prenyltransferase TolF from *Tolypothrix* sp. clustered with LynF but only shared ~53% amino acid sequence identity, suggesting a possibly divergent function. TolF was compared with other characterized cyanobactin prenyltransferases in a Bayesian phylogenetic tree (Figure 1B), revealing that TolF is evolutionarily more closely related to TruF1, despite the proteins sharing only ~48% identity. We therefore predicted that TolF might produce new chemistry. Because of this possibility, and because no cyanobactins or cyanobactin biosynthetic genes from *Tolypothrix* had previously been described, we chose to investigate this pathway further.

The gene *tolF* was identified in *Tolypothrix* sp. PCC 7601, a freshwater filamentous cyanobacterium isolated from a lake in the state of Connecticut, USA. We identified the 10.4 kb long *tol* gene cluster from a 9.96 Mbp draft genome (Figure 2A), containing the signature genes involved in cyanobactin biosynthesis.^[16] *tolE* encodes the precursor peptide, which is the substrate for enzymatic modification. TolE contains recognition sequences

COMMUNICATION

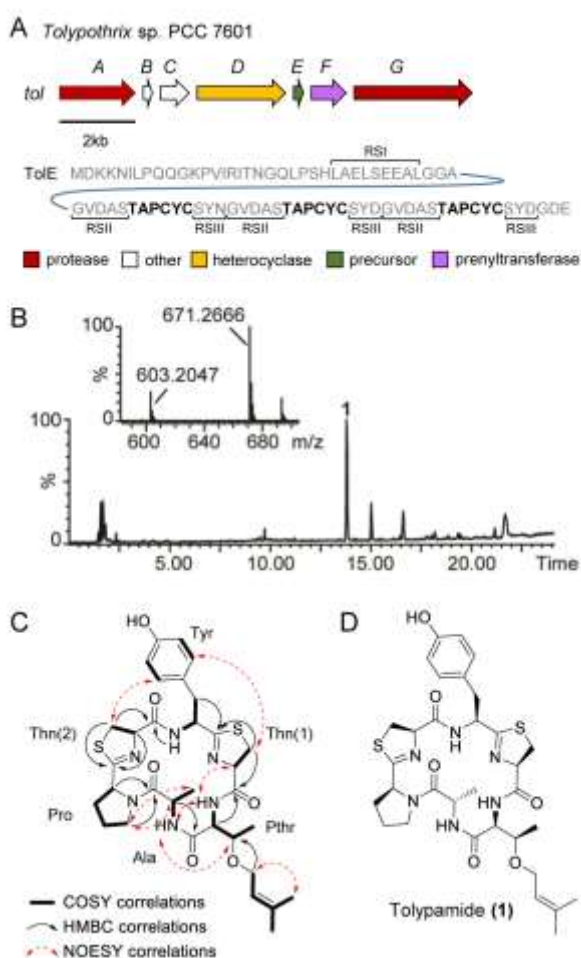


Figure 2. Isolation of the cyanobactin tolypamide (**1**) from *Tolypothrix* sp. A) The *tol* gene cluster and partial sequence of precursor peptide (TolE) with the core regions in bold. RSI, RSII and RSIII are annotated. B) Total ion chromatogram of the crude extract of *Tolypothrix* sp. PCC 7601. The compound of interest, tolypamide (**1**) eluted at $t_R = 13.80$ mins. Inlay is the extracted mass spectrum of the peak at $t_R = 13.80$ mins with $m/z = 671.26$ Da and $m/z = 603.20$ Da (loss of the prenyl group). The other peaks observed did not show m/z values which could be correlated to a *tol* pathway product. C) 2D NMR correlations establishing the planar structure of **1**. D) Structure of tolypamide (**1**)

(RSs) I, II, and III, which should be responsible for docking with TolD, TolA, and TolG, respectively.^[17]

Collectively, if similar to other cyanobactin pathways, the four proteins (TolE, TolD, TolA and TolG) would produce an N-C cyclic peptide in which all Cys/Thr residues would be heterocyclized to thiazoline/oxazoline residues.^[18] TolE contained three copies of the core peptide sequence, TAPCYC, encoding the final cyclic natural product. Each core peptide was flanked by RSII (GVDAS) and RSIII (SYD), so that one equivalent of TolE would produce three equivalents of the cyclic peptide product. The role of TolF was unknown, but its evolutionary relationship to TruF1 suggested that it might prenylate the non-heterocyclized Thr residue present in the core peptide sequence.

To test our predictions, we initiated efforts to detect the cyanobactin product from the *tol* cluster in *Tolypothrix* sp. PCC 7601. The LC/MS chromatogram of the extracted culture medium showed a peak with two major ions at m/z 671.2666 Da and m/z 603.2047 Da (Figure 2B). The neutral mass difference of m/z 68

Da between the two ions is typical of the loss of isoprene.^[5b, 19] Moreover, the mass of the parent ion precisely matches the structure predicted from the biosynthetic gene cluster. Large scale fermentation was carried out to isolate the compound, tolypamide (**1**), for spectroscopic studies.

Extensive 1D and 2D NMR analysis, including COSY, HSQC, HMBC and NOESY, was carried out to elucidate the structure of **1** (Table S1 and Figures S2-S6). The ¹H NMR spectrum showed characteristic features of a peptide, such as α -methine multiplets ($\delta_H \sim 5.5$ -3.5 ppm) and clear NH proton signals (δ_H 8.18-7.23 ppm). Examination of the 2D NMR spectra led to the assignment of seven spin systems consisting of Thr, Ala, Pro, Tyr, a prenyl group and two Cys, which collectively matched our initial predicted core sequence. The NH peak at δ_H 7.23 ppm in the Thr spin system indicated that it was not modified by heterocyclization. Each of the Cys spin systems showed a methylene carbon (δ_C 37.3 – 38.8 ppm) correlated to a methine carbon (δ_C 77.9 – 78.4 ppm) both resonating further downfield than usual. In addition, the absence of NH peaks in the Cys spin systems along with ¹³C chemical shifts that were consistent with literature data to thiazoline-containing peptides, supported heterocyclization of both Cys residues to thiazoline rings.^[20] The two methyl singlets (δ_H 1.47 and 1.26 ppm) in the ¹H NMR were assigned to a terminal *gem*-dimethyl of a prenyl spin system indicating forward prenylation in **1**. Further support for this assignment was obtained by the strong HMBC correlation between the β -proton (δ_H 3.95 ppm) of Thr and the methylene carbon (δ_C 65.3 ppm) of the prenyl group. Both these observations suggested that the prenyl group was attached to the Thr through an ether linkage, thus revealing the identification of the structure of forward-prenylated Thr (PrThr) unit, which to the best of our knowledge has not been previously observed.

The absolute configuration of (**1**) was assigned using a Marfey's type method, confirming the presence of L-Ala, L-Thr, and L-Cys.^[21] During the hydrolysis, both Pro and Tyr racemized because of the adjacent azoline double bond.^[22a] Subjecting **1** to ozonolysis prior to derivatization revealed the presence of L-Pro. The L-Pro in **1** was assigned as the *trans* rotamer based on the difference in ¹³C chemical shifts of β and γ carbons of Pro ($\Delta_{\beta\gamma} = 4.5$ ppm).^[22b] Hydrolysis in deuterium chloride led to a selective deuterium labelling of the D-isomers, demonstrating that D-Pro and D-Tyr were hydrolysis artefacts and revealing that all amino acids in **1** are in the L-configuration.^[22c]

Tolypamide is structurally unique among characterized cyanobactins in that the cyclic hexapeptide contains two thiazoline rings and a forward *O*-prenylated threonine. The latter is unprecedented among this class of natural products. Under the growth conditions tested, tolypamide (**1**) is the only detectable product by LC/MS which can be connected with the *tol* pathway. Although a number of cyanobactins have shown cytotoxic activity,^[19b] tolypamide (**1**) did not show significant cytotoxic or antimicrobial activity against a panel of six cancer cell lines (DU145, A549, HeLa CCL2, HepG2, and MDA-MB 231) or bacterial strains (*E. coli* ATCC 25922, *S. aureus* ATCC 29737 and *P. aeruginosa* ATCC 9027), respectively.

COMMUNICATION

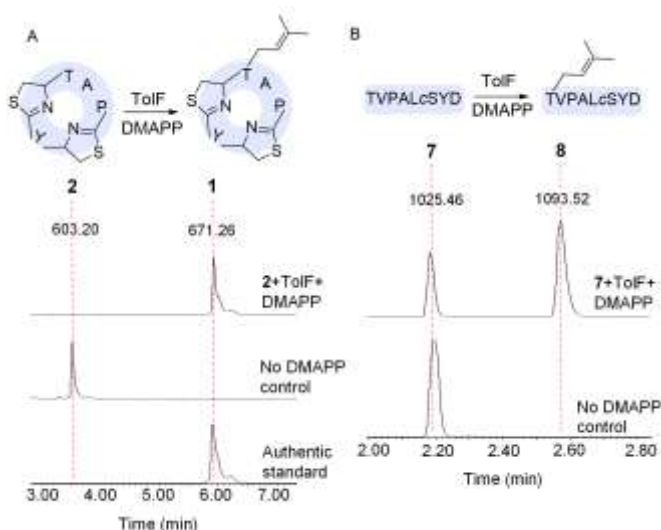


Figure 3. *In vitro* prenyltransferase activity of ToIF. A) Extracted ion chromatograms of overnight ToIF reaction with substrate **2** to generate tolypamide **1** (top), no DMAPP negative control (middle) and comparison with authentic tolypamide **1** standard (bottom). B) Extracted ion chromatograms (EICs) for overnight ToIF reaction with compound **7** to produce **8** (top) and no DMAPP negative control (bottom). The m/z values $[M+H]^+$ for the compounds are indicated above each peak in the EICs. The Cys (c) residue in **7** is alkylated with iodoacetamide.

For functional validation, ToIF was cloned, overexpressed, and used in biochemical assays (Figure S7). Short precursor peptides containing Thr were incubated with the recombinant ToIF and the putative prenyl donor, dimethylallyl pyrophosphate (DMAPP) (Table 1). After overnight incubation, the reaction mixtures were monitored using LC/MS for product ions with increased mass of m/z 68 Da relative to the substrate mass (Figure 3 and S14).

To access the putative native substrate **2**, synthetic peptide TAPCYCYD (core + RSIII) was treated sequentially with broad-substrate enzymes catalyzing heterocyclization, proteolytic cleavage and macrocyclization (Figure S13). When the substrate was treated with heterocyclase (RSI-TruD) the Cys residues were converted to thiazolines (C^{*}).^[8b] The resultant product TAPC^{*}YC^{*}SYD was incubated with macrocyclase, PatG to produce cyclic peptide **2** along with the linear cleaved recognition sequence, SYD.^[8b] After overnight incubation with ToIF and DMAPP, the native substrate **2** was quantitatively converted to tolypamide (**1**). The enzymatic reaction product **1** was compared to the natural product **1** obtained from *Tolypothrix* sp. PCC 7601, confirming its structural identity (Figure 3A). Interestingly, when TAPCYC (**3**; the linear TolE core sequence) was used, it was also modified on Thr, but with only 6% conversion after 16 h incubation. We further compared cyclic-[TSIAPFP] (**4**), an analog of the trunkamide natural product, finding that it was prenylated only on Thr with a conversion of 80%. Linear analog **5** (TSIAPFPSYD) was again prenylated only on Thr, with only a conversion of 5%. Thus, in two examples with quite different sequences, the cyclic variant was more efficiently prenylated than the linear variant.

Further linear *tru* pathway analogs **6**, **7** and *pag* pathway substrate **9** were also relatively efficiently modified on Thr, with overnight conversions from 15-70%. Shorter substrates containing Thr were only slightly modified (4% on substrate **10**) or were not modified at all (substrates **11** and **12**). Although Ser was present in substrates **4-7**, only Thr was modified. Since TruF1 reverse-prenylates both Ser and Thr, we sought to determine

whether ToIF also prenylates Ser. We designed substrates **13** and **14**, analogs of substrate **7** in which the reactive Thr is replaced with Ser. Tandem mass spectrometry provided unambiguous evidence that **7** was prenylated on the terminal Thr, while **13** and **14** were prenylated on the terminal Ser (Figure S15). However, only a very minor amount of prenylation was detected for substrates **13** and **14** (<10% conversion compared to **7**). Thus, ToIF appears to prefer Thr, unlike TruF1.

We further used this subset of related substrates to answer the major scientific question posed by this study: what governs the forward versus reverse prenylation of Ser and Thr residues? Extremely sequence-diverse natural and synthetic peptides are known to be reverse-prenylated on Ser/Thr residues by TruF1, which is unfortunately challenging to characterize biochemically.^[15] Therefore, ToIF offered us the opportunity to characterize the serine/threonine-prenylating class of enzymes for the first time and to obtain deeper insight into the regioselectivity of DMAPP addition. We hypothesized that ToIF would be intrinsically forward-prenylating, regardless of the sequence of peptide substrate. To test this hypothesis, we used the most synthetically accessible robust substrate, the disulfide dimer **6**. When **6** was treated with ToIF and DMAPP at scale, both mono-prenylated and di-prenylated products were identified (Figure S14F). To obtain sufficient compound for purification, peptide dimer **6** was reduced using tris (2-carboxyethyl)phosphine (TCEP) and treated with iodoacetamide (IAA) to produce **7**, which when treated with ToIF and DMAPP afforded mono-prenylated **8** in good yield (Figure 3B). The reduced form of **6** and compounds **7** and **8** were purified and used for NMR experiments (Figure S8).

The ¹H NMR and HSQC spectra were consistent with the proposed structures, and they were assigned using COSY and TOCSY experiments (Figure S9-S12 and Tables S3-S5). The peptide sequences were further supported by ROESY correlations and tandem mass spectrometry. Comparison of ¹H NMR spectra of **6** (reduced form), **7** and **8** shows the disappearance of the Thr hydroxyl group (δ_H 5.51 ppm) and emergence of ¹H chemical shifts from forward prenyl group in compound **8**, indicating that the prenyl group is installed on the Thr residue (Figure S9). The ¹H NMR spectrum of **8** showed the signature chemical shifts associated with a forward prenyl moiety, with diastereotopic α -methylene protons (δ_H 4.01, 3.87 ppm), α -methine proton (δ_H 5.24 ppm) and sharp gem-dimethyl singlets (δ_H 1.60, 1.69 ppm).^[23] The isoprene α -methylene protons (δ_H 4.01, 3.87 ppm) showed ROESY correlations with Thr via the Thr β -proton (δ_H 3.63 ppm) and γ -proton (δ_H 1.13 ppm) (Figure S10). Taken together with the Thr, Ser and Tyr chemical shifts in **6**, these data unambiguously demonstrate that ToIF is forward prenylating on Thr.

Previous studies indicated that TruF1 is likely strictly Ser/Thr reverse prenylating, while here we demonstrate that ToIF is rigorously forward prenylating, preferring Thr. Both TruF1 and ToIF are more broadly accommodating of other residues flanking the essential Ser/Thr. Previous crystal structures of prenyltransferases complexed with substrates and prenyl donors allow some general conclusions about this class to be drawn. In the PagF (forward Tyr prenylating) structure, phenolic oxygen of the substrate is 1 Å closer to the C-1 carbon atom of dimethylallyl group than the C-3 carbon, resulting in favourable O-prenylation of Tyr.^[8b] A recent structure of a non-cyanobactin enzyme, the Trp N-prenyltransferase, CymD showed that the C-3 carbon of the

COMMUNICATION

dimethylallyl group is 2.5 Å closer to the substrate than the C-1 carbon, leading to facile reverse prenylation.^[24] We expect similar structural nuances give rise to different regiospecificities of TolF and TruF1, although their relatively distant sequence similarity makes direct comparison challenging (Figure S16).

Table 1. Prenylation selectivity of TolF

Substrate ^[a]	% Conversion ^[d]	Significance
Cyclic- <u>I</u> APC*YC* (2) ^[b]	100% (1)	Native TolF substrate
<u>I</u> APCYC (3)	6%	TolE core
Cyclic- <u>I</u> SIAPFP (4)	82%	TruF substrate analog
<u>I</u> SIAPFPSYD (5)	5%	TruE core analog
<u>I</u> VPALCSYD dimer (6)	55%(mono-prenylated) 25% (di-prenylated)	TruE core analog
<u>I</u> VPALcSYD (7) ^[c]	72% (8)	TruE core analog
<u>I</u> TPYLPFAGDDAE (9)	15%	PagE core analog
<u>I</u> AGRY (10)	4%	Most distant
Fmoc-Thr-OH (11)	NR ^[e]	Single amino acid
H-Thr-Thr-Thr-OH (12)	NR ^[e]	Linear tripeptide
<u>S</u> VPALcTYD (13) ^[c]	6%	N-terminal Ser
<u>S</u> VPALcSYD (14) ^[c]	4%	N-terminal Ser

[a] The site of prenylation is underlined in the substrate on the basis of NMR or MS/MS data. In some cases, it cannot be determined by MS. [b] C* indicates thiazoline generated using RSI-TruD, [c] c indicates Cys treated with iodoacetamide, [d] % conversion were calculated from MS traces and do not represent isolated yield. % Conversions were calculated using the peak area (A) from extracted ion chromatograms from reactions incubated for 16 h. % Conversion = (A_{product}/A_{product} + A_{starting material}) × 100. [e] NR = No reaction

TolF was selective for DMAPP and could not accept isopentenyl pyrophosphate (IPP) or longer C₁₀-C₂₀ isoprenoids including geranyl pyrophosphate (GPP), farnesyl pyrophosphate (FPP) and geranylgeranyl pyrophosphate (GGPP). A closer examination of TolF sequence alignment with other prenyltransferases revealed that the residues involved in sequestering the pyrophosphate moiety of the isoprene donor are conserved in TolF, including Arg66, Lys135, His137, Tyr191 and Arg298 (Figure S16).^[8b] The carbocation intermediate generated from isoprene pyrophosphate donor is also shielded from solvent at the active site cavity by several hydrophobic residues. In 2018, Estrada et al. showed that a single Phe to Gly mutation at the hydrophobic active site of PagF, shifts the donor preference to GPP from DMAPP.^[11b] This is a direct consequence of active site expansion in presence of smaller glycine residue. In TolF, the equivalent residue is the larger Met232, which might result in a more constricted active site incapable of accommodating C₁₀-C₂₀ isoprenoid cofactors.

In conclusion, we show how focused genome mining leads to the discovery of a novel cyanobactin, tolypamide (1) and a new post-translational modification with applications in peptide and pharmaceutical chemistry. TolF catalyzes a new regio- and chemoselective isoprenylation reaction capable of modifying diverse peptides. To our knowledge, TolF is the first example of a cyanobactin prenyltransferase that catalyzes the forward

prenylation of Ser/Thr in peptides. With the discovery of TolF, nearly every chemically possible combination of peptide O-prenylation has now been observed, including hydroxyl forward and reverse prenylation, phenolic OH forward and reverse prenylation, and carboxylate prenylation. Coupled with the known C- and N-modifying F proteins, there is now a broad toolset for alkylating diverse peptide sequences. Cyanobactin pathways remain a rich source novel natural products and biosynthetic machinery that is useful in biotechnology. It is notable that there are many further orphan F proteins and other unknown proteins revealed in SNN diagrams, implying an even broader diversity awaiting discovery. Finally, the discovery TolF as a robust and stable Ser/Thr O-prenyltransferase creates opportunities to study the structural biology and evolution of this enzyme family.

Acknowledgements

This work was funded by NIH GM122521 (E.W.S), MOE Tier 1 R148000258114 and R148000271114 (B.I.M) and Carnot-Pasteur Microbe Santé (M.G). S.S is supported by the Skaggs Graduate Research Fellowship. M.P is supported by the MOE Research Scholarship. We thank Dr. Bailey Miller for assistance with NMR spectroscopy, Dr. Wenjia Gu for providing RSI-TruD, Prof. Lu Yixin and Dr. Wang Nengzhong for assistance with ozonolysis, and the Drug Discovery and Optimization Platform (NUS) for cytotoxicity assays.

Keywords: biosynthesis • genome mining • natural products • prenylation • ribosomally synthesized and post-translationally modified peptides • RiPPs

- [1] J. L. Lau, M. K. Dunn, *Bioorg. Med. Chem.* **2018**, *26*, 2700-2707.
- [2] M. Erak, K. Bellmann-Sickert, S. Els-Heindl, A. G. Beck-Sickinger, *Bioorg. Med. Chem.* **2018**, *26*, 2759-2765.
- [3] R. Kowalczyk, P. W. R. Harris, G. M. Williams, S.-H. Yang, M. A. Brimble, in *Peptides and Peptide-based Biomaterials and their Biomedical Applications* (Eds.: A. Sunna, A. Care, P. L. Bergquist), Springer International Publishing, Cham, **2017**, pp. 185-227;
- [4] J. Winkelblech, A. Fan, S.-M. Li, *Appl. Microbiol. Biotechnol.* **2015**, *99*, 7379-7397.
- [5] a) P. G. Arnison et al., *Nat. Prod. Rep.* **2013**, *30*, 108-160. b) M. Montalbán-López et al., *Nat. Prod. Rep.* **2021**, Online ahead of print.
- [6] a) W. Gu, S.-H. Dong, S. Sarkar, S. K. Nair, E. W. Schmidt, *Methods Enzymol.* **2018**, *604*, 113-163; b) J. A. McIntosh, M. S. Donia, S. K. Nair, E. W. Schmidt, *J. Am. Chem. Soc.* **2011**, *133*, 13698-13705. c) S. Sarkar, W. Gu, E. W. Schmidt, *ACS Catal.* **2020**, *10*, 7146-7153.
- [7] D. E. Ruffner, E. W. Schmidt, J. R. Heemstra, *ACS Synth. Biol.* **2015**, *4*, 482-492;
- [8] a) L. Dalponte, A. Parajuli, E. Younger, A. Mattila, J. Jokela, M. Wahlsten, N. Leikoski, K. Sivonen, S. A. Jarmusch, W. E. Houssen, D. P. Fewer, *Biochemistry* **2018**, *57*, 6860-6867; b) Y. Hao, E. Pierce, D. Roe, M. Morita, J. A. McIntosh, V. Agarwal, T. E. Cheatham, 3rd, E. W. Schmidt, S. K. Nair, *Proc. Natl. Acad. Sci. U S A.* **2016**, *113*, 14037-14042; c) A. Mattila, R.-M. Andsten, M. Jumppanen, M. Assante, J. Jokela, M. Wahlsten, K. M. Mikula, C. Sigindere, D. H. Kwak, M. Gugger, H. Koskela, K. Sivonen, X. Liu, J. Yli-Kauhaluoma, H. Iwai, D. P. Fewer, *ACS Chem. Biol.* **2019**, *14*, 2683-2690; d) A. Parajuli, D. H. Kwak, L. Dalponte, N. Leikoski, T. Galica, U. Umeobika, L. Trembleau, A. Bent, K. Sivonen, M. Wahlsten, H. Wang, E. Rizzi, G. De Bellis, J. Naismith, M. Jaspars, X. Liu, W. Houssen, D. P. Fewer, *Angew. Chem. Int. Ed. Engl.* **2016**, *55*, 3596-3599; e) D. Sardar, Y. Hao, Z. Lin, M. Morita, S. K. Nair, E. W. Schmidt, *J. Am. Chem. Soc.* **2017**, *139*, 2884-2887; f) D. Sardar, Z. Lin, E. W. Schmidt, *Chem. Biol.* **2015**, *22*, 907-916.
- [9] T. Kuzuyama, J. P. Noel, S. B. Richard, *Nature* **2005**, *435*, 983-987;

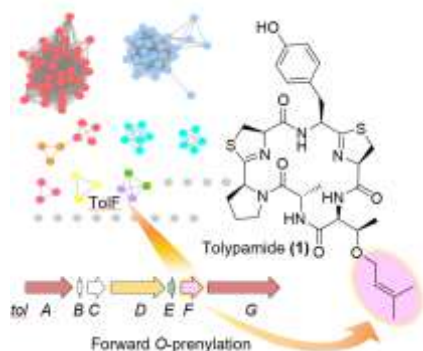
COMMUNICATION

- [10] A. F. Bent, J. Koehnke, W. E. Houssen, M. C. M. Smith, M. Jaspars, J. H. Naismith, *Acta Crystallogr. Sect. F Struct. Biol. Cryst. Commun.* **2013**, *69*, 618-623.
- [11] a) M. Morita, Y. Hao, J. K. Jokela, D. Sardar, Z. Lin, K. Sivonen, S. K. Nair, E. W. Schmidt, *J. Am. Chem. Soc.* **2018**, *140*, 6044-6048; b) P. Estrada, M. Morita, Y. Hao, E. W. Schmidt, S. K. Nair, *J. Am. Chem. Soc.* **2018**, *140*, 8124-8127.
- [12] E. W. Schmidt, J. T. Nelson, D. A. Rasko, S. Sudek, J. A. Eisen, M. G. Haygood, J. Ravel, *Proc. Natl. Acad. Sci. U S A.* **2005**, *102*, 7315-7320.
- [13] M. D. Tianero, E. Pierce, S. Raghuraman, D. Sardar, J. A. McIntosh, J. R. Heemstra, Z. Schonrock, B. C. Covington, J. A. Maschek, J. E. Cox, B. O. Bachmann, B. M. Olivera, D. E. Ruffner, E. W. Schmidt, *Proc. Natl. Acad. Sci. U S A.* **2016**, *113*, 1772-1777.
- [14] a) J. A. Gerlt, J. T. Bouvier, D. B. Davidson, H. J. Imker, B. Sadkhin, D. R. Slater, K. L. Whalen, *Biochim. Biophys. Acta Proteins Proteomics* **2015**, *1854*, 1019-1037; b) S. Hunter et al., *Nucleic Acids Res.* **2009**, *37*, D211-D215.
- [15] M. S. Donia, J. Ravel, E. W. Schmidt, *Nat. Chem. Biol.* **2008**, *4*, 341-343.
- [16] S. Yerrapragada, A. Shukla, K. Hallsworth-Pepin, K. Choi, A. Wollam, S. Clifton, X. Qin, D. Muzny, S. Raghuraman, H. Ashki, A. Uzman, S. K. Highlander, B. G. Fryszczyn, G. E. Fox, M. R. Tirumalai, Y. Liu, S. Kim, D. M. Kehoe, G. M. Weinstock, *Genome Announc.* **2015**, *3*, e00355-00315.
- [17] D. Sardar, E. Pierce, J. A. McIntosh, E. W. Schmidt, *ACS Synth. Biol.* **2015**, *4*, 167-176.
- [18] J. A. McIntosh, E. W. Schmidt, *Chembiochem* **2010**, *11*, 1413-1421.
- [19] a) M. S. Donia, E. W. Schmidt, *Chem. Biol.* **2011**, *18*, 508-519. b) M. S. Donia, E. W. Schmidt, in *Comprehensive Natural Products II* (Eds: H.-W. Liu, L. Mander), Elsevier, **2010**, pp. 539-558.
- [20] A. Rudi, M. Akin, E. M. Gaydou, Y. Kashman, *Tetrahedron* **1998**, *54*, 13203-13210.
- [21] X. Salvatella, J. M. Caba, F. Albericio, E. Giralt, *J. Org. Chem.* **2003**, *68*, 211-215.
- [22] a) P. Wipf, C. P. Miller, *Tetrahedron Lett.* **1992**, *33*, 907-910. b) O. W. Howarth, D. M. J. Lilley, *Prog Nucl Magn Reson Spectrosc.* **1978**, *12*, 1-40. c) T. Fukuda, Y. Sudoh, Y. Tsuchiya, T. Okuda, N. Matsuura, A. Motojima, T. Oikawa, Y. Igarashi, *J. Nat. Prod.* **2015**, *78*, 797-802.
- [23] J. Martins, N. Leikoski, M. Wahlsten, J. Azevedo, J. Antunes, J. Jokela, K. Sivonen, V. Vasconcelos, D. P. Fewer, P. N. Leão, *Sci Rep.* **2018**, *8*, 14537.
- [24] B. W. Roose, D. W. Christianson, *Biochemistry* **2019**, *58*, 3232-3242.

COMMUNICATION

Entry for the Table of Contents

Insert graphic for Table of Contents here.



TolF is a novel O-prenyltransferase which catalyzes forward O-prenylation on threonine and serine residues. A combination of genome mining, natural products chemistry, and biochemical assays were used to identify the biosynthetic gene cluster, natural product, and functionally validate this enzyme. This study fills a gap in the sequence-function space of prenyltransferases and introduces TolF as a promising tool in synthetic biology.

Institute and/or researcher Twitter usernames: @NUSingapore, @nuspharmacydept