



HAL
open science

Human plague: An old scourge that needs new answers

Xavier Vallès, Nils Chr. Stenseth, Christian Demeure, Peter Horby, Paul S. Mead,
Oswaldo Cabanillas, Mahery Ratsitorahina, Minoarisoa Rajerison, Voahangy
Andrianaivoarimanana, Beza Ramasindrazana, et al.

► **To cite this version:**

Xavier Vallès, Nils Chr. Stenseth, Christian Demeure, Peter Horby, Paul S. Mead, et al.. Human plague: An old scourge that needs new answers. PLoS Neglected Tropical Diseases, 2020, 14 (8), pp.e0008251. <10.1371/journal.pntd.0008251>. <pasteur-02928741>

HAL Id: pasteur-02928741

<https://pasteur.hal.science/pasteur-02928741v1>

Submitted on 2 Sep 2020

HAL is a multi-disciplinary open access archive for the deposit and dissemination of scientific research documents, whether they are published or not. The documents may come from teaching and research institutions in France or abroad, or from public or private research centers.

L'archive ouverte pluridisciplinaire **HAL**, est destinée au dépôt et à la diffusion de documents scientifiques de niveau recherche, publiés ou non, émanant des établissements d'enseignement et de recherche français ou étrangers, des laboratoires publics ou privés.

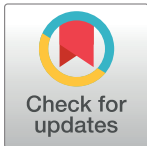


Distributed under a Creative Commons CC BY 4.0 - Attribution - International License

REVIEW

Human plague: An old scourge that needs new answers

Xavier Vallès¹✉*, Nils Chr. Stenseth^{2,3}✉, Christian Demeure⁴, Peter Horby⁵, Paul S. Mead⁶, Oswaldo Cabanillas⁷, Mahery Ratsitorahina¹, Minoarisoa Rajerison⁸, Voahangy Andrianaivoarimanana⁸✉, Beza Ramasindrazana⁸, Javier Pizarro-Cerda⁴✉, Holger C. Scholz⁹, Romain Girod¹⁰, B. Joseph Hinnebusch¹¹, Ines Vigan-Womas¹²✉, Arnaud Fontanet^{13,14}, David M. Wagner¹⁵, Sandra Telfer¹⁶, Yazdan Yazdanpanah^{17,18}, Pablo Tortosa¹⁹, Guia Carrara¹⁷, Jane Deuve²⁰✉, Steven R. Belmain²¹✉, Eric D'Ortenzio^{17,18}, Laurence Baril¹✉



1 Epidemiology and Clinical Research Unit, Institut Pasteur de Madagascar, Antananarivo, Madagascar, **2** Centre for Ecological and Evolutionary Synthesis (CEES), Department of Biosciences, University of Oslo, Oslo, Norway, **3** Key Laboratory for Earth System Modelling, Department of Earth System Science, Tsinghua University, Beijing, China, **4** Yersinia Research Unit, National Reference Centre "Plague & Other Yersinioses," WHO Collaborating Research and Reference Centre for Yersinia, Institut Pasteur, Paris, France, **5** Centre for Tropical Medicine and Global Health, Nuffield Department of Medicine, University of Oxford, Oxford, United Kingdom, **6** Bacterial Diseases Branch, Division of Vector Borne Diseases, Centers for Disease Control and Prevention, Fort Collins, Colorado, United States of America, **7** Control de Epidemia Desastres y Otras Emergencias Sanitarias, Oficina General de Epidemiología, Ministerio de Salud, Perú, **8** Plague Unit, Central Laboratory for Plague, Institut Pasteur de Madagascar, Antananarivo, Madagascar, **9** Reference Laboratory for Plague, Bundeswehr Institute of Microbiology, Munich, Germany, **10** Medical Entomology Unit, Institut Pasteur de Madagascar, Antananarivo, Madagascar, **11** Rocky Mountain Laboratories, National Institute of Health, National Institutes of Allergy and Infectious Diseases, Hamilton, Montana, United States of America, **12** Immunology of Infectious Diseases Unit, Institut Pasteur de Madagascar, Antananarivo, Madagascar, **13** Emerging Diseases Epidemiology Unit, Institut Pasteur, Paris, France, **14** PACRI unit, Conservatoire National des Arts et Métiers, Paris, France, **15** The Pathogen and Microbiome Institute, Northern Arizona University, Flagstaff, Arizona, United States of America, **16** School of Biological Sciences, University of Aberdeen, Aberdeen, United Kingdom, **17** REACTing, Inserm, Université Paris-Diderot, Sorbonne Paris Cité, Paris, France, **18** Service de Maladies Infectieuses et Tropicales, Hôpital Bichat-Claude Bernard, AP-HP, Paris, France, **19** Université de La Réunion, Unité Mixte de Recherche Processus Infectieux en Milieu Insulaire Tropical, La Réunion, France, **20** Department of International Affairs, Institut Pasteur, Paris, France, **21** Natural Resources Institute, University of Greenwich, Chatham Maritime, Kent, United Kingdom

✉ These authors contributed equally to this work.

✉a Current address: Surveillance and Epidemiology Directorate at the Ministry of Public Health, Antananarivo, Madagascar

✉b Current address: Immunology of Infectious Diseases Unit, Institut Pasteur de Dakar, Dakar, Sénégal
* xvalles@gmail.com

OPEN ACCESS

Citation: Vallès X, Stenseth NC., Demeure C, Horby P, Mead PS, Cabanillas O, et al. (2020) Human plague: An old scourge that needs new answers. PLoS Negl Trop Dis 14(8): e0008251. <https://doi.org/10.1371/journal.pntd.0008251>

Editor: Ruifu Yang, Beijing Institute of Microbiology and Epidemiology, CHINA

Published: August 27, 2020

Copyright: © 2020 Vallès et al. This is an open access article distributed under the terms of the [Creative Commons Attribution License](https://creativecommons.org/licenses/by/4.0/), which permits unrestricted use, distribution, and reproduction in any medium, provided the original author and source are credited.

Funding: The workshop meeting where the contents of this article were developed was hosted by the Institut Pasteur (Paris, France) with financial and organizational support from the Department of International Affairs, the Emerging Disease Epidemiology Unit, the Mathematical Modelling of Infectious Diseases Unit and REACTing-Inserm. Oswaldo Cabanillas's travel was financed by the Department of International Affairs at the Institut Pasteur (Paris, France). Travel costs for Laurence Baril and Mahery Ratsitorahina were financially supported by USAID (Grant n° AID-687-G-13-00003), and for Voahangy Andrianaivoarimanana and Minoarisoa Rajerison by Northern Arizona University (through HDTRA1-11-16-BRCWMD-BAA). Attendance of Steven Belmain was

Abstract

Yersinia pestis, the bacterial causative agent of plague, remains an important threat to human health. Plague is a rodent-borne disease that has historically shown an outstanding ability to colonize and persist across different species, habitats, and environments while provoking sporadic cases, outbreaks, and deadly global epidemics among humans. Between September and November 2017, an outbreak of urban pneumonic plague was declared in Madagascar, which refocused the attention of the scientific community on this ancient human scourge. Given recent trends and plague's resilience to control in the wild, its high fatality rate in humans without early treatment, and its capacity to disrupt social and

supported by the African Union (Grant AURGI/1/006/2016). Travel and accommodation for Feno Rakotoarimanana, and accommodation for Romain Girod, Beza Ramasindrazana, Voahangy Andrianaivoarimanana, and Minoarisoa Rajerison, were financially supported by the Wellcome Trust/UK Department for International Development (Grant 211309/Z/18/Z) and REACTing-Inserm. All other participants financially supported travel and accommodation through their own institutional funding. The preparation and editing of the manuscript was financially supported by Wellcome Trust/UK Department for International Development (Grant 211309/Z/18/Z).

Competing interests: The authors have declared that no competing interests exist.

healthcare systems, human plague should be considered as a neglected threat. A workshop was held in Paris in July 2018 to review current knowledge about plague and to identify the scientific research priorities to eradicate plague as a human threat. It was concluded that an urgent commitment is needed to develop and fund a strong research agenda aiming to fill the current knowledge gaps structured around 4 main axes: (i) an improved understanding of the ecological interactions among the reservoir, vector, pathogen, and environment; (ii) human and societal responses; (iii) improved diagnostic tools and case management; and (iv) vaccine development. These axes should be cross-cutting, translational, and focused on delivering context-specific strategies. Results of this research should feed a global control and prevention strategy within a “One Health” approach.

Author summary

The historical aspect of plague makes for fascinating reading, due to its capacity to disrupt human society and its socioeconomic and cultural impacts throughout human history. We argue that the Madagascar outbreak in 2017 is a tipping point in human plague epidemiology and a call to elevate research priorities on plague as a matter of some urgency. In contrast with what occurred with the Ebola virus disease crisis in West Africa between 2013 and 2015 and the new coronaviruses (the emergence of severe acute respiratory syndrome coronavirus [SARS-CoV] and Middle East respiratory syndrome coronavirus [MERS-CoV] as early warnings of the current severe acute respiratory syndrome coronavirus 2 [SARS-CoV-2] pandemic), we have an opportunity to act preventively and enable evidence-based measures to avoid major health crises due to plague outbreaks in the near future.

Introduction

Plague is a bacterial rodent-borne disease caused by *Yersinia pestis*, a gram-negative bacillus member of the Enterobacteriaceae family. As a zoonosis, it is first and foremost a rodent disease with complex zoonotic/epizootic cycles that may occasionally be transmitted to humans, whereby it can cause sporadic cases, outbreaks, or even large epidemics (Fig 1). Bubonic plague is the most common clinical presentation among humans. Bubonic forms may evolve to septicaemic disease, and 1% to 3% of cases develop a secondary pneumonic plague [1–3]. Secondary pneumonic plague forms may be transmitted from person to person through respiratory droplets, which can result in primary pneumonic plague. Without intensive treatment, the lethality of septicaemic and pneumonic plague is almost 100% between 1 and 4 days following the onset of symptoms [1–3].

Plague has marked human history in a unique way during at least 3 historical pandemics. The first described pandemic was the Justinian epidemic (6th–7th centuries), whereas the second spanned from the 14th century to the 19th century in Europe [4, 5], including the Black Death period (1,347–1,351 BC) that wiped out an estimated 30% to 40% of the European population, constituting its deadliest recorded epidemic. The third pandemic of plague emerged from its natural cradle in the Yunnan province (China) in the mid-19th century [6]. Because of the expansion of the shipping industry, this third wave established sustained *Y. pestis* epizootic cycles worldwide, including in the United States, South America, Madagascar, and other areas previously free of plague. Plague is currently endemic in restricted areas where it has

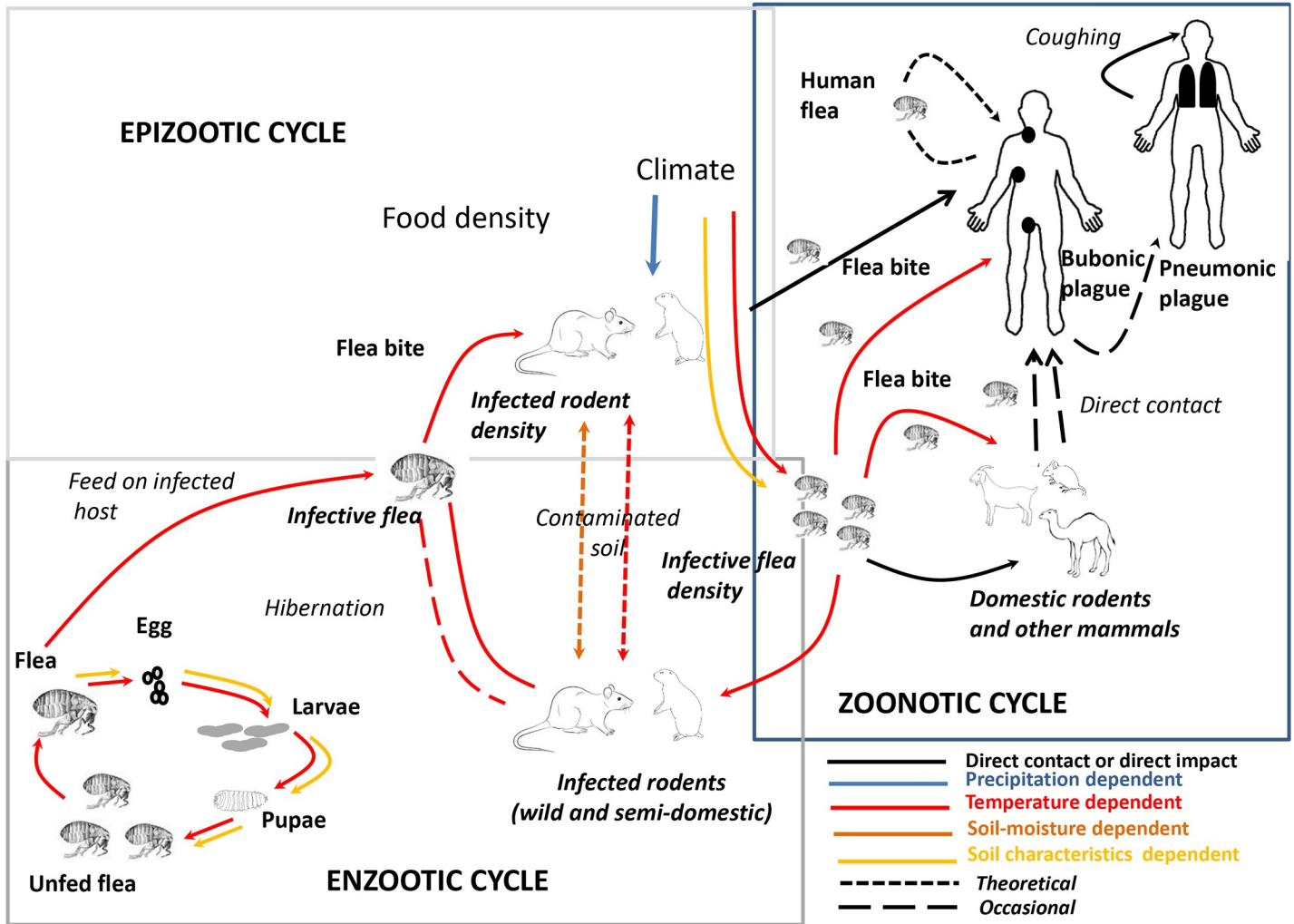


Fig 1. Epizootic/enzootic cycle of *Y. pestis*. Caption credit: Ben Ari MT, Neerinx S, Gage KL, Kreppel K, Laudisoit A, Leirs H, et al. Plague and Climate: Scales Matter. PLoS Pathog. 2011; 7:e1002160 [49].

<https://doi.org/10.1371/journal.pntd.0008251.g001>

been present for several hundred or even thousands of years (China, Kyrgyzstan, Kazakhstan, Russia, and Mongolia), or just a hundred years (Peru, the US, Madagascar, and some areas in Africa) [5, 7, 8]. Although in the mid-20th century human cases were mostly reported from Asia, with a steadily decreasing trend, a sharp increase of cases in Africa was observed during the 1980s to the 2000s, which now make up the majority of total cases [4]. Between 2013 and 2018, 2,886 cases and 504 deaths have been notified to WHO (with a reported case fatality of 17.5%), of which 95% derive from sub-Saharan Africa, mainly in Madagascar and the Ituri region of the Democratic Republic of Congo (DRC) [8]. Occasional scattered cases of human plague are regularly declared in China, Mongolia, the Russian Federation, Kyrgyzstan, Peru, Bolivia, Uganda, Tanzania, and the US [7–9]. Nowadays, *Y. pestis* remains present in at least 33 countries (where signs of activity have been detected in the last 30 years). More than 30 different flea vectors have been suspected to play a role in transmission, and over 200 mammals (mainly rodents and lagomorphs) have been reported to be infected by *Y. pestis*, including potential reservoir hosts, in different parts of the world. Table 1 exemplifies this diversity. However, the commensal rats (*Rattus rattus* and *R. norvegicus*) and their flea (*Xenopsylla*

Table 1. Main vectors and hosts identified in countries where human plague has been declared between 2013 and 2018*.

Country	Declared human plague cases 2013–2018**	Recognized main host(s)	Described vectors involved in zoonotic/epizootic cycles
DRC [7]	410	<i>Arvicanthis abyssinicus</i> <i>Mastomys natalensis</i> <i>Lemniscomys striatus</i> <i>Rattus rattus</i> <i>Mus minutoides</i>	<i>Dinopsyllus lypus</i> <i>Ctenophthalmus cabirus</i> <i>Ctenophthalmus phyris</i> <i>Xenopsylla brasiliensis</i>
Madagascar [7,100,108]	2,323	<i>R. rattus</i> <i>R. norvegicus</i> <i>Suncus murinus</i>	<i>X. cheopis</i> <i>X. brasiliensis</i> <i>Synopsyllus fonquerniei</i>
Uganda [7,56]	22	<i>Arvicanthis niloticus</i> <i>Mastomys</i> spp. <i>Crocidura</i> spp.	<i>X. cheopis</i> <i>X. brasiliensis</i> <i>C. cabirus</i> <i>D. lypus</i>
United Republic of Tanzania [7]	36	<i>R. rattus</i> <i>M. natalensis</i> <i>A. abyssinicus</i>	<i>X. cheopis</i> <i>X. brasiliensis</i> <i>D. lypus</i>
Bolivia [7,98]	3	<i>R. rattus</i> <i>Graomys griseoflavus</i> <i>Galea musteloides</i>	<i>X. cheopis</i>
Peru [98]	40	<i>R. rattus</i> <i>R. norvegicus</i> <i>Sciurus stramineus</i> <i>Akodon mollis</i> <i>Cavia porcellus</i> <i>Aegialomys xantheolus</i> <i>Oryzomys andinus</i>	<i>Polygenis litargus</i> <i>X. cheopis</i> <i>Hectopsylla</i> spp. <i>Tiamastus cavicola</i>
US [25, 109]	40	<i>Cynomys gunnisoni</i> <i>Cynomys ludovicianus</i> <i>Onychomys leucogaster</i> <i>Otospermophilus variegatus</i> <i>Otospermophilus beecheyi</i> <i>Callospermophilus lateralis</i> <i>Urocitellus beldingi</i> <i>Eutamias</i> spp. <i>Microtus californicus</i>	<i>Oropsylla hirsuta</i> <i>Oropsylla montana</i> <i>Opisocrostis</i> spp. <i>Diamanus montanus</i> <i>Hoplopsyllus anomalus</i>
China [6,7]	5	<i>Marmota himalayana</i> <i>Marmota caudata</i> <i>Rattus flavipectus</i> <i>Urocitellus undulatus</i> <i>Spermophilus dauricus</i> <i>Eothenomys miletus</i> <i>Apodemus chevrieri</i> <i>Meriones unguiculatus</i> <i>Microtus brandti</i> <i>Microtus fustus</i>	<i>Callopsylla dolabris</i> <i>Oropsylla silantiewi</i>
Kyrgyzstan [6,110]	1	<i>Marmota baibacina</i> <i>Microtus gregalis</i> <i>Microtus carruthersi</i> <i>M. caudata</i>	<i>Callopsylla caspia</i> <i>O. silantiewi</i> <i>Citellophyllus tesquorum</i>
Russia Federation [110]	1	<i>Spermophilus pygmaeus</i> <i>Meriones meridianus</i> <i>Ochotona pallasi pricei</i> <i>U. undulatus</i> <i>S. dauricus</i> <i>Spermophilus musicus</i> <i>Microtus arvalis</i>	<i>C. caspia</i> <i>Neopsylla setosa</i> <i>Neopsylla laeviceps</i> <i>X. conformis</i> <i>Paradoxopsyllus scorodumovi</i>

(Continued)

Table 1. (Continued)

Country	Declared human plague cases 2013–2018**	Recognized main host(s)	Described vectors involved in zoonotic/epizootic cycles
Mongolia [7,110–113]	5	<i>Marmota sibirica</i> <i>Rhombomys opimus</i> <i>M. unguiculatus</i> <i>Allactaga sibirica</i> <i>Cardiocranius paradoxus</i>	<i>O. silantiewi</i>

*A comprehensive review of hosts and vectors involved or suspected to be involved in plague transmission would need an entire article or chapter of a book. The aim of this table is to highlight the outstanding ability of *Y. pestis* to evolve in different hosts and vectors.

**From: Bertherat E. Plague around the world in 2019. Weekly Epidemiological Report. 2019;25:289–292 [8].

Abbreviation: DRC, Democratic Republic of Congo

<https://doi.org/10.1371/journal.pntd.0008251.t001>

cheopis) are currently considered the most important hosts and vector involved in human outbreaks. Other hosts and vectors are involved in human transmission in different regions. Overall, plague is largely a disease of wild mammals, killing susceptible rodent species, cats, camels, and other mammals when the disease spills over from rodent reservoir host species. The maintenance of *Y. pestis* in nature, and from where it spreads to cause human outbreaks, renders it almost impossible to eradicate.

Plague once again grasped the attention of the scientific community when an outbreak of pneumonic plague was declared in Madagascar in September 2017, primarily striking the capital Antananarivo and the main seaport of Toamasina. A total of 1,878 clinically suspected pneumonic plague cases were identified [10]. This episode should be considered an echo of the third pandemic, which first established plague in Madagascar [11].

Pneumonic plague outbreaks with human-to-human transmission are fortunately relatively rare, probably due to the estimated low basic reproduction number (R_0) between 1.2 and 1.4 [12, 13]. Besides the recent outbreak in Madagascar, minor episodes of pneumonic plague have been described in recent years in the US [13], Madagascar [14, 15], India [16], DRC [17,18], Uganda [19], Peru [20], and China [21]. However, large and deadly outbreaks of pneumonic plague have occurred, most notably in Manchuria, where more than 60,000 estimated deaths occurred between 1910 and 1911 [3, 22], highlighting that R_0 of pneumonic plague depends on the specific situation and interaction of vulnerable population as has been showed during the analysis of more recent outbreaks [15] and past outbreaks [3]. Therefore, given the high lethality, the capacity for social disruption, increasing connectivity between endemic and rural areas, and international transport, plague should be considered a neglected threat that needs renewed attention.

This article is based on the conclusions of a workshop held by international plague experts in Paris in July 2018 that had the main goal of drafting a roadmap on plague research priorities, expanding the scope and contents of a short report published elsewhere [23]. With this purpose, we summarize the current knowledge about plague and identify the priority gaps to be filled based on the exchange of knowledge and experiences during the meeting and a systematic review of published plague literature. Here, we report the main conclusions of the discussions at this meeting.

Which hosts and vectors should be targeted for human plague control?

It is important to point out that the true number of species implicated in plague transmission—the true composition of reservoirs and accidental hosts—is unknown [24]. Therefore, one major challenge in the management and prevention of plague is to identify the flea vector(s)

and small mammal reservoir(s) in different parts of the world where plague has long been established. In most plague foci, several vectors and reservoirs are implicated in plague transmission and persistence; however, in some plague foci, there is limited research and only partial knowledge of the vector and reservoir species involved. Different vectors and hosts (including intermediary hosts between wild and domestic animals) have been described in disparate settings and ecological conditions: from equatorial forests in the DRC to arid regions in central Asia. Since the management priority has normally been to control human plague by preventing transmission to humans, researchers have tended to focus on the interface between humans and flea vectors, while the interactions between sylvatic and commensal small mammals, vectors, and landscape ecology have received relatively little attention. Factors responsible for epizootic spread (episodic amplification within and between mammal species) vary in different settings, and reservoirs may be multiple or unique. Domestic mammals and some atypical vectors could play a bridge role between wild hosts and the human environment. In the US, the increase of intermediary hosts populations of the grasshopper mouse (*Onychomys leucogaster*) is thought to enhance the connectivity between primary hosts populations of prairie dogs (*Cynomys ludovicianus*), the risk of plague outbreaks in the wild [25], and in turn the chances of human transmission. Although fleas have been assumed to constitute the main drivers of host-to-human transmission, this may depend on different contexts. In Madagascar, *X. cheopis* is predominantly found on black rats living in houses, while *Synopsyllus fonquerniei* is found on the fur or within burrows of black rats living outside houses but also in open biotopes and forests, where it may parasitize endemic insectivores and rodents [26], with a synergistic role on plague persistence [27]. Similar situations may be found across other plague-endemic areas, thus highlighting the diversity of hosts and vectors as a key factor for plague persistence in the wild. In fact, *Y. pestis* has been detected in a large number of fleas (Table 1) and other ectoparasites; their roles throughout plague-endemic regions of the world remain unclear. A recent study suggests that inter-human transmission through ectoparasites (*Pulex irritans* and *Pediculus humanus*) may have played a predominant role during the historical Black Death Pandemic [28]. In fact, both of these ectoparasites are capable of carrying *Y. pestis* [29, 30]. Furthermore, it has been pointed out that specific so-called vectors are acting as true hosts, since they are able to carry *Y. pestis* for weeks.

Current data indicate that host and vector population structures and hotspots of plague have a crucial influence on plague epidemiology. It has been suggested that the balance between resistant hosts (those able to harbour *Y. pestis* with no apparent ill effect) and susceptible host (those able to tolerate *Y. pestis* for only short periods and eventually succumb to the effects of the bacteria) is important for plague persistence in the wild or resurgence among humans, and susceptible hosts [24]. For instance, modelling and empirical data from Madagascar indicate that rat genetic population structure (the balance between susceptible and resistant hosts) plays a crucial role [31–35] as modelled by topography (see below). This model may also be applied between different species, including multi-host and intra-host interactions. Finally, the implication of amoebae as biotic reservoirs has recently received some experimental and field-based support and therefore deserves consideration [36].

The persistence of plague in the wild or the onset of plague among humans may be related to the internal dynamics of enzootic (maintenance in the wild)/epizootic cycles. This has been well documented in Kazakhstan, where threshold densities of great gerbils (*Rhombomys opimus*) and fleas are correlated with persistence of plague in the wild or resurgence of plague in humans, respectively [37, 38]. Empirical observations elsewhere corroborate this complex dynamic, which should in turn help us to understand the ability of *Y. pestis* to regularly emerge in areas where plague has been silent for years. A further question to explore is the capacity of

Y. pestis to survive in soil or post-mortem tissues and contribute to further transmission, as a potential link to enzootic and even epizootic cycles [39, 40].

The understanding of the biology of host-vector-pathogen interaction and proximity to humans would aid development of specific control strategies, and to address apparently simple but not well-answered questions, such as the relative efficacy of using domestic flea control on its own or in combination with rodent control or reservoir host vaccination. Mechanisms of host and vector control more commonly involve the combined use of flea and rodent control, or community-based interventions such as encouraging behavioural changes or environmental interventions (e.g., improved hygiene and sanitation). The use of chemicals to eliminate fleas or rodents requires the surveillance of physiological resistance mechanisms in flea/rodent populations and the identification of biochemical or genetic markers of resistance as well as the characterization of mechanisms involved and their environmental and genetic determinants. Studies on *X. cheopis* insecticide resistance have already been carried out in different situations [41, 42]. However, information on other flea species is most often missing. Beyond insecticides, rodenticides, and the problem of resistance, innovative tools and methods for flea and rodent control must be proposed, tested, and validated in the field, including nontoxic solutions and strategies (i.e., physical methods like cellulose glue-based products for flea control).

The implementation of rodent or vector control measures should also be carefully evaluated, given the complexity of rodent/vector interactions in different settings. For instance, experience in Peru has suggested that reducing the population of particular rodent species may in turn act as a risk factor for increasing intra- and interspecific contact rates among rodent species and with the human population, leading to a resurgence in human plague cases. Similar observations have been made with other rodent/mammal-borne diseases, such as leptospirosis [43] and bovine tuberculosis [44], whereby host control (rats and badgers, respectively) can lead to increased movement by those animals remaining, facilitating disease spread and higher disease prevalence. This strongly suggests that applying universal measures may be counterproductive in different scenarios.

Besides the use of insecticides or rodenticides, there are specific human behaviours that could be modified to avoid proliferation of domestic hosts or the chances of contact with infected vectors. Some behavioural factors that favour the transmission of *Y. pestis* to humans are well known in on-going plague surveillance programmes. In Peru, plague cases have been correlated to human activities, e.g., domestic breeding of guinea pigs within people's homes, the storage of harvest in unsealed conditions, and the poor hygienic living conditions of temporary workers [45]. In Madagascar, a close link exists between seasonality of human plague and the movement of rats between houses and rice fields related to the harvesting season and the use of slash-and-burn cultivation [26, 46]. During the 2004 outbreak in DRC [47], inter-human pneumonic plague transmission could be favoured by the housing conditions of gold and diamond mine workers.

What are the drivers of human plague?

Drivers of human plague include contextual factors that influence host and vector population dynamics and human behaviours that may increase the chances of exposure and infection. Such factors mainly include altitude, temperature, rainfall, biome, geography, and anthropogenic environmental changes through deforestation, agricultural expansion, cropping systems, activities and patterns, climate change, urbanisation, and the introduction of non-native invasive species.

For instance, in the DRC an increase of plague was observed after the introduction of *Rattus* spp. into the wild combined with the introduction of new crops to replace cattle farming [47].

In Madagascar, *R. rattus* was introduced centuries before the arrival of *Y. pestis*, most probably through the Arabian trade network in the Indian Ocean, which was flourishing from the middle of the first millennium [48]. Climate is considered to have a major impact on plague incidence [49]. Rainfall and temperature have correlated with the increase or decrease of gerbils or vector populations in Kazakhstan [37], and rainfall was linked to human plague occurrence in Uganda [50], which, in turn, strongly influences the abundance of small mammals [51], thus increasing the probability of epizootic cycles. Studies in the US have shown relationships with *El Niño* episodes and the effects of rainfall on host populations and temperature on vector survival [52, 53]. Similarly, *El Niño* episodes have been considered an early warning in Peru [45] and Madagascar [54]. Temperature anomalies and altitude have been related to plague occurrence in Madagascar [55]. Temperature and humidity influence the differential development and survival of the 2 main flea vectors (*X. cheopis* and *S. fonquerniei*) involved in plague transmission in Madagascar (where plague shows a clear seasonal pattern) [27]. There is a clear interplay between plague occurrence, human behaviours, climate, and landscape in a number of contexts [56–59]. Data from Madagascar suggest that geography shaped the genetic diversity of hosts (rats) and *Y. pestis* as a result of the relative population isolation, which may play an important role for *Y. pestis* persistence, through the reintroduction of new strains of hosts and/or the pathogen between different areas [60–62]. Furthermore, geography and landscape may influence the risk and directionality of plague spread through their hosts [63]. The confirmation of the drivers of plague should help to better map the risk of plague, to improve surveillance, preparedness, and focused interventions.

The connection between rural and urban areas is a major concern to avoid urban outbreaks. The reduction or discontinuation of surveillance programmes and the exacerbation of poverty and poor sanitation are important factors in the emergence of human cases. The 2017 outbreak in Madagascar raises the question of whether specific determinants exist for bubonic or pneumonic outbreaks: climatic oscillations with earlier seasonal slash-and-burn farming practices, a lack of vigilance from the health authorities leading to the absence of efficient communication to the population and lower healthcare standards and surveillance systems. However, only human population density has been consistently related to the risks of human to human transmission of pneumonic plague. No specific strains of *Y. pestis* have been associated with particular virulence factors or tropism for pneumonic forms.

Which new diagnostic tools for plague are needed?

The WHO gold standard for plague diagnosis remains the bacterial culture. However, culture is not feasible in most of the settings in which plague occurs as proper handling of samples is sometimes difficult, and the results are not immediately available (minimum 4 days). In addition, isolation of *Y. pestis* is hampered by administration of antibiotics prior to sampling. Therefore, case management is essentially based upon symptomatic diagnosis, which is specific to endemic areas with bubonic forms. Pneumonic cases pose particular diagnostic challenges, since it is rarely suspected during the initial stages of an outbreak. Initial symptoms of pneumonic plague without an evident bubo (lymph node swelling) are nonspecific. Collection of high-quality sputum from suspected pneumonic plague patients is particularly difficult to obtain, more so than aspirates of bubo, and even if good quality sputum is obtained, the processing stage of this material, polymicrobial, and complex specimen is technically problematic. As a result, the yield from sputum examination and cultivation is very low.

The rapid diagnostic test (RDT) as point of care (POC) strategy was implemented in Madagascar in 2002 in primary care facilities based in the “endemic districts” together with information provided to community health workers. This RDT has been widely used and improved

the specificity of diagnosis, resulting in a drop in the number of suspected cases of bubonic plague [64]. The RDT is based on monoclonal antibodies against the F1 capsular antigen of *Y. pestis*. F1 detection in samples collected directly from bubonic aspirate are processed and interpreted by the healthcare workers. The combination of bacteriological methods and F1 ELISA have positive and negative predictive values of 90.6% and 86.7%, respectively [65]. However, this RDT was evaluated during the Madagascar pneumonic plague outbreak of 2017, and the sensitivity and specificity for sputum samples was limited; further analysis is on-going. Conventional PCR targeting *pla* [66, 67] and *caf1* genes [68, 69] has also been used for investigations in the past. In the context of the Madagascar outbreak, a new algorithm based on real time (targeting *pla*, *caf1* genes) and conventional PCR (targeting *inv*₁₁₀₀, *caf1* and *pla*) has been implemented to ensure a rapid and reliable diagnostic [10]. Serology based on anti-F1 capsular antigen-specific immunoglobulins (IgG/IgM) [70] is used for prevalence surveys among humans, mammals, and post-outbreak investigations, but it may have questionable value in pneumonic plague. Therefore, rapid and reliable diagnostic tests are necessary for both bubonic and pneumonic plague for an efficient outbreak response.

Different plague diagnostic options have been proposed, from improvement of culture methods to appropriate molecular methodologies. Proposed methods are summarized in [Box 1](#).

Box 1. Proposed improved plague diagnostic methods

1. Improve the yield of *Y. pestis* culture

- i. Better sample collection, transport, and processing (homogenization)
- ii. Developing more selective media for cultivation from sputum and bubo aspirates

2. To improve the sensitivity and specificity of RDT

- i. More adequate protocols for more efficient F1 antigen release
- ii. To develop a second generation of RDT through the inclusion of additional antigens

3. New nucleic acid-based tools

- i. Quantification of DNA in sputum samples
- ii. PCR-based detection in blood
- iii. PCR for saliva

4. Upgrade serological testing methods through the inclusion of more antigens and/or alternative to current ELISA methods

In addition, especially for pneumonic plague, capabilities for differential diagnostic should be improved, and the use of new techniques such as metagenomics in sputum could help to estimate the true magnitude of an outbreak. The use of these diagnostic tools among animals (domestic or wild) as sentinel surveillance mechanisms should also be considered.

How can plague surveillance and case management be improved?

Surveillance of plague is of utmost importance in endemic regions, first for early case detection and treatment (which is related to favourable outcome); second, for early warning of human plague occurrence or outbreaks; and, third, for more accurate quantification of the disease burden and geographical distribution. Most human plague cases are currently occurring in underpopulated and remote areas with particularly difficult access. True case numbers of human plague may be underestimated in some areas, especially in areas with weak health systems and unstable social and political situations, like in the DRC. Therefore, the accuracy of current surveillance systems for human plague cases is still uncertain, to which is added the existence of pauci-symptomatic or asymptomatic cases suggested by some sero-surveillance studies [71]. However, plague surveillance should be integrated into regular surveillance systems of common diseases in impoverished regions, and therefore general improvement of the Health Information System is needed, since plague is not usually the leading health issue.

Plague surveillance should integrate human, climate, and animal surveillances as well as a combination of passive or active case detection depending on the scenarios, the season, or the early warning signs. A central question regarding surveillance is identifying which reservoir hosts and vectors are the most appropriate for sentinel surveillance. Once again, the answer may be different in different settings. Classical pre-outbreak deaths among hosts (rats or other rodents), which typically indicates an explosive spread of an epizootic cycle, is not systematically observed and may even be an exception perpetuated by classical accounts [72]. Experiences in Peru pointed out the utility of some domestic animals, like dogs or cats, as sentinel indicators of an increased risk of infection. Some studies found a predictive plague occurrence value of seroprevalence among certain mammals [73, 74].

Cases may arise in a community with a high degree of stigma linked to plague and therefore be hidden from local authorities. Changing deeply rooted cultural behaviours may be difficult and increase the risk of outbreak by delaying health care-seeking behaviours and making access to healthcare centres difficult. Community-based surveillance systems by community health workers or networks of community-based key informants have been used to increase awareness and as early warning systems for different diseases, including plague in Madagascar. As with other infectious diseases, when cases arise in areas or countries where plague is not usually reported or with uncommon clinical forms (i.e., pneumonic plague), a lack of suspicion may lead to a critical delay in notification, as it was reported during the early stages of the 2017 outbreak in Madagascar.

Early detection, diagnosis, and treatment are crucial for a favourable outcome and depend on an efficient surveillance system. A number of treatment protocols have been used to treat plague (Table 2); however, only a small randomized trial including gentamycin and doxycycline has been conducted [75]. Different therapeutic choices have been based on empirical observations or animal models. The most widely recommended treatment is a high dose of streptomycin, resulting in effective clinical responses in both bubonic and pneumonic plague [1, 2]. However, streptomycin has side effects such as deafness and renal toxicity, and the administration to children and pregnant women is problematic. The administration protocol (intramuscular) remains a logistical and material challenge in resource-poor settings, as well as in the context of an outbreak. In addition, streptomycin is often not available as it is no longer used as a first-line treatment of tuberculosis. As shown during the recent plague outbreak in Madagascar, the lack of specific clinical and laboratory diagnostics for pneumonic plague was responsible for an important number of misdiagnoses leading to an overestimate of the magnitude of the outbreak [10] and, consequently, inadequate treatment of severe community-acquired respiratory infections with streptomycin. The situation was worsened by the lack of

Table 2. Current treatment protocol (WHO and CDC recommendations)*.

Antibiotic	Dose	Duration	Remarks	Way of administration
Streptomycin	15 mg/kg/dose	7 days	Maximum 1 g per day	IM
Gentamycin	5 mg/kg/d	7 days	Once daily	IM or IV
Doxycycline	100 mg/12 h	7 to 10 days	Initially a loading dose of 200 mg/12 h the first day	IV or PO
Tetracycline	2 g/d	7 to 10 days	Initially loading dose of 2 g	IV or PO
Levofloxacin	500 to 750 mg daily	7 to 10 days	Once-daily special indication for high tissue penetration	IV or PO
Ciprofloxacin	400 mg/12 h	7 to 10 days		PO
Chloramphenicol	50 to 100 mg/kg/d	10 days	Indicated in cases for high tissue penetration Dose may be reduced to 25 to 30 mg/kg/d depending on clinical response to reduce the risk of bone marrow suppression	IV or PO
Cotrimoxazole	1 g/4–6 h	10 days	Not indicated as first choice Initial loading dose of 2–4 g	PO
Approved combinations				
Gentamycin + doxycycline				<i>See above</i>
Gentamycin + levofloxacin				<i>See above</i>
Postexposure prophylaxis				
Doxycycline	100 mg/12 h			PO
Cotrimoxazole	ND			
Ciprofloxacin	500 mg/12 h			

Modified from: Mead PS. *Yersinia* Species (Including Plague). In: Mandell, Douglas, and Bennett's. Principles and practice of infectious diseases, 8th Edition; 2015. pp. 2607–2618 [2].

Abbreviations: CDC, Centers for Disease Control and Prevention; IM, intramuscular; IV, intravenous; ND, not defined; PO, by mouth

<https://doi.org/10.1371/journal.pntd.0008251.t002>

resources to carry out rapid and specific exclusion diagnostics for other pathogens. During an investigation of pneumonic plague in Ituri, DRC, it was found that leptospirosis cases were included as suspected plague cases [76]. On the other hand, healthcare providers should be trained to provide chemoprophylaxis to decrease secondary cases and should be equipped to avoid nosocomial infections.

These experiences indicate that validation of therapeutic alternatives are needed. A number of different alternatives to streptomycin have been empirically suggested (see Table 2). Clinical trials need to be set up during outbreaks to evaluate these therapeutic alternatives. New guidelines from the Ministry of Public Health of Madagascar are now recommending the combination of levofloxacin and gentamycin for hospitalized pulmonary cases. They also give the possibility to switch to other treatments after the acute phase (switch to ciprofloxacin after the early phase of streptomycin treated cases). Gentamycin, fluoroquinolones, chloramphenicol, doxycycline, and trimethoprim-sulfamethoxazole are different alternatives used in different settings, which generally result in good clinical outcomes [1, 7, 77]. A well-established first-line treatment for suspected pneumonic plague needs to be established that is affordable, is

orally administered, has few side effects, is continuously available, and has a wide spectrum of activity to target other community-acquired respiratory diseases.

The possibility of *Y. pestis* to exchange resistant coding plasmids with other members of the Enterobacteriaceae family, which can easily carry almost any sort of drug resistance, is a serious threat [78]. *Y. pestis* has been shown to be sensitive to antibiotics in strains isolated from humans; however, 3 unrelated strains have been isolated from hosts and vectors in Madagascar which carried plasmid transmitted resistance to streptomycin and other drugs [79, 80]. The extreme virulence of *Y. pestis* further stresses the need to set up reliable monitoring of susceptibility to treatment.

What are the gaps in knowledge about *Y. pestis* biology?

Although much is known about specific virulence factors of *Y. pestis* [81, 82], further technical development regarding specific prevention or therapeutic tools or drugs has not occurred, which would require a deeper understanding of the underlying biology of *Y. pestis*. For instance, current data indicate that the degree of blockage of the biofilm in the flea's gut is vector specific and is responsible for the biofilm-dependent transmission efficiency of infected vectors—or the ability to carry *Y. pestis* over days or weeks—and a key step in *Y. pestis* transmissibility [83, 84]. Drugs targeting the biofilm formation in the guts of flea vectors could be a promising strategy.

One interesting avenue of research is genetic expression studies of *Y. pestis*, which may help to understand pathogen-vector-host interactions and their persistence [85]. An example of this approach is the identification of 10 conserved genes that lead *Y. pestis* to survive in soil and post-mortem tissues. This suggests that this pathway plays a relevant role in *Y. pestis* persistence [86]. In fact, the study of the interplay of pathogenicity and evolution has given important insights about *Y. pestis* biology. The combination of gene acquisition (through horizontal exchange) and loss in natural populations of *Y. pestis* explains their outstanding adaptability to different hosts, vectors, and environments [6, 87]. The high virulence of *Y. pestis* could be a result of an adaptive response to generate particularly high levels of bacteraemia in order to ensure transmissibility between hosts and vectors [88]. With respect to hosts and vectors, an interesting area to explore is to ascertain the selective process that plague has exerted upon mammal populations [89], including humans [90]. The selection of resistant hosts or intermediate-susceptible hosts in a suitable region is a mechanism of establishment and long-term persistence of *Y. pestis*. In turn, this may provide insights on the pathophysiology of plague, through the determination of specific alleles or genotypes, selected by natural pressure of plague which may confer natural resistance. The natural cellular immune response to human pulmonary cases during acute, early, and convalescent phases of the infection in particular is not well understood. Mice models suggest a local immunosuppression effect that may explain the lack of immune response in early stages and the rapid progression of this clinical form [91].

The practical results of this research could be specific drugs that may prevent *Y. pestis* spread in the wild or humans, new antibiotics or better shaped control, and prevention measures based on the knowledge of their intimate biological cycle, e.g., the development of more adequate therapies or prophylaxis strategies through the development of vaccines. In this sense, vaccines against *Y. pestis* have been developed since the early identification of the pathogen. A live attenuated vaccine (EV76) was developed and used in Madagascar and introduced in Vietnam, Indonesia, and in the former USSR [92]. Due to the significant side effects and the need of revaccination, its use was abandoned once the number of cases fell. Its Russian EV-NIIEG derivative is still used in Asia and Russia [93]. A number of other candidates are

under investigation, including whole-cell-based or subunit-based DNA vaccines—attenuated or with live carriers—combining different recombinant antigens and with molecular adjuvants [94]. To date, no phase III clinical trial has been carried out. However, rF1V and SV1 vaccines successfully passed phase II trials; WHO recently provided guidance for phase III evaluation in the field [95]. Given the current extent of human plague, a human vaccine candidate should be effective for immediate distribution in an outbreak context and be effective against pulmonary forms. One promising strategy could be reservoir host vaccination campaigns particularly as vaccination of reservoir hosts is a tried and tested strategy for many zoonotic diseases such as wild foxes for rabies in Europe [96] and livestock for leptospirosis in New Zealand [97].

To sum up, for human plague control, 3 operational targets have been defined for *Y. pestis* biology research: (1) identify molecular targets susceptible for drug development in addition to the currently used antibiotics, (2) improve our understanding of the underlying molecular mechanisms of *Y. pestis* ability to spread and persist over centuries in different eco-epidemiological settings, and (3) improve our understanding of the immune response to plague that may pave the way for vaccine development and better diagnostic tools.

Discussion

The horrifying impact of plague during the 14th century is still hard to forget as it is reflected in European folklore, language, and literature. The 2017 Madagascar outbreak should be taken as a serious warning and confirms that plague remains a human threat. However, given this fatal past background and recognized virulence, it is striking to realize that plague is mostly seen as an historical curiosity. It is alarming, indeed, that the most basic tools for control and prevention of plague, such as curative and preventive treatments and vaccines, are still pending adequate validation. This is not related to the lack of robust candidates but to the fact that plague has been a neglected disease during recent decades. Peculiarly, recent plague vaccine development and its funding has long been motivated more by the desire to fight plague as a potential bioterrorism weapon rather than as a public health problem in endemic countries. This is in stark contrast with the accelerated development of Ebola and SARS-CoV-2 vaccines.

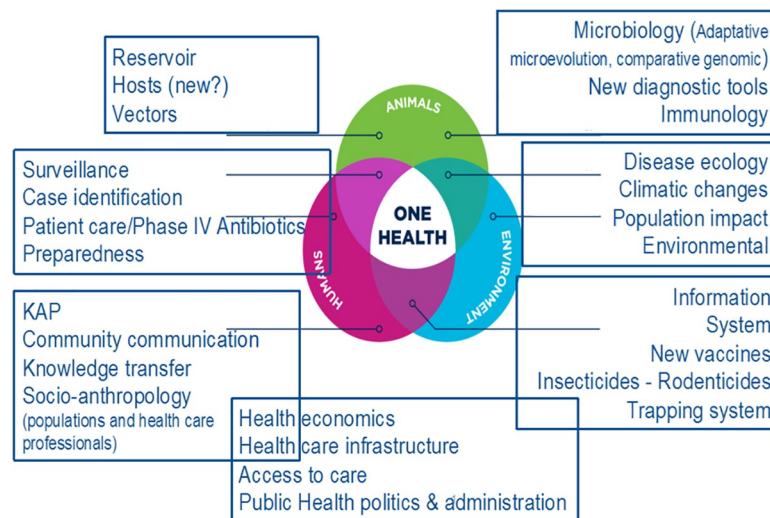
Nevertheless, given the diversity of hosts and vectors involved in different parts of the world where plague is endemic, context-specific research is still lacking, particularly in plague-affected low- and middle-income countries. The contrasts in ecological dynamics of vectors and reservoir hosts involved in different locations where plague circulates are remarkable. For instance, in Madagascar, *R. rattus* has been recognized as the only relevant host during regular and sustained zoonotic and epizootic cycles, whereas in South America, a surprisingly large range of small mammals has been described to carry *Y. pestis* [98]. It is clear that the knowledge of the dynamics of enzootic and epizootic cycles remains fragmented and poorly understood. Indeed, while animal–human transmission is usually investigated following emergence episodes, it is most important to understand the biological cycle of *Y. pestis* in the environment in between 2 successive outbreaks. The seasonality of plague in Madagascar makes this environmental setup well-adapted to conduct such research programs.

Plague foci contexts may be rather different between those where the disease occurs or has until recently occurred in a regular and rather predictable pattern (Madagascar, DRC, Peru, Kazakhstan, etc.) or where it is a mostly incidental phenomenon (US, China, Libya, Zambia, Algeria). Furthermore, there are scenarios in which sporadic cases emerge from a contact within a current epizootic focus, or those of a major outbreaks or epidemics. Indeed, plague has a natural tendency to progress, disperse, and eventually, to expand to other regions, as it was observed during the 1990s in Madagascar when plague was established in the city harbour of Mahajanga [99]. This urban focus was sustained by the Asian house shrew (*Suncus murinus*)

but transmitted to humans through the black rat (*R. rattus*), which exemplifies the surprising adaptability of *Y. pestis* [100]. In this sense, it is important to note the nature of *Y. pestis* as a “generalist” pathogen, demonstrated by its ability to evolve across different environments, vectors, and hosts, facilitating its capacity to move from one region, context, or scenario to another, or even the emergence or re-emergence in previously free areas or where human plague has not been observed for decades, as it has been already observed in North and East Africa [101–103]. The apparent unpredictability of plague re-occurrence and emergence highlights how much about the eco-epidemiology of plague remains poorly understood, and this should be a matter of great concern for public health officials. Studies during on-going outbreaks may provide important insights about the epidemic dynamics of human plague.

More context-specific research should be framed in a translational strategy in order to produce appropriate tools, devices, and policies. Translational research should be considered in their 2 widely used meanings: the “bench-to-bedside” process—which involves applying knowledge from basic sciences to produce new medicines, diagnostic tools, and treatment options for patients—and from a public health perspective whereby work focuses on health-care delivery systems to improve health services research and to have a primary outcome of new policies and practices. In the case of plague, new drugs, vaccines, and diagnostic devices are clearly needed.

Furthermore, more research on the surveillance, ecology, and human behavioural interventions is urgently required. Special efforts should be made to obtain community engagement towards the public health response. To this end, social scientists and anthropologists can provide invaluable insights that can mitigate distrust, increase cooperation, and improve community communication. This cross-cutting research should be linked to the paradigm of One Health (Fig 2), which is grounded in the recognition that human, animal, and environmental health are interdependent. Human plague is a good example of this interdependence where improving human living conditions in plague-endemic areas through environmental and behavioural interventions might be the most effective way to avoid human plague cases as well as reduce environmental degradation to improve ecosystem resilience. The Ebola crisis in West Africa in 2013–2015 shows the capacity of deadly diseases, like human plague, to disrupt



Adapted from UC Davis

Fig 2. “One Health” integrative approach. KAP, Knowledge, Attitudes and Practices.

<https://doi.org/10.1371/journal.pntd.0008251.g002>

societies and health systems [104, 105], as we are experiencing with the current COVID-19 pandemic. Growing urbanization, environmental/climate change, and population mobility increase the chances of such phenomena. In summary, we ascertained the main axes of research that should be prioritized for plague prevention and control: (i) an improved understanding of the ecological interactions among the reservoir, vector, pathogen, and environment; (ii) human and societal responses; (iii) improved diagnostic tools and case management; and (iv) vaccine development.

Accordingly, as a final point highlighted from the Paris workshop, plague research needs an inter- and transdisciplinary approach that involves molecular biologists, immunologists, clinicians, epidemiologists, public health specialists, veterinarians, zoologists, entomologists, mathematical modelling specialists, ecologists, anthropologists, and social scientists. Even in emergency situations, the involvement of anthropologists and social scientists has been considered increasingly relevant [106, 107]. An example of such a cross-cutting research could be the identification of reservoir hosts to be targeted for the development and implementation of wildlife vaccination programmes. As was suggested during the workshop, to make human plague history has 2 complementary meanings: a history with a happy end or to make plague a relic of the past.

Top five papers

1. Wu L. League of Nations. A treatise on pneumonic plague. Nancy: Berger-Levrault, 1925.
2. Pollitzer R. Plague studies. VIII. Clinical aspects. Bull World Health Organ. 1953; 9(1):59–129.
3. Denis DT, Gage KL, Gratz N, Poland JD, Tikhomirov E. Plague manual: Epidemiology, Distribution, Surveillance and Control. WHO. 1999. [cited 2020 June 22]. Available from: <http://www.who.int/csr/resources/publications/plague/whocdscsredc992a.pdf?ua=1>
4. Gage KI, Kosoy MY. Natural history of plague: perspectives from more than a century of research. Annu Rev Entomol. 2005; 50:505–28.
5. Hinnebusch BJ. The Evolution of flea-borne transmission in *Yersinia pestis*. Curr Issues Mol Biol. 2005; 7:197–212.

Key learning points

- The number of human plague cases by current surveillance systems may be underestimated.
- The actual knowledge of vectors and reservoirs implicated in plague transmission and accidental hosts is far from complete.
- The interplay between plague occurrence, human behaviours, climate, and landscape is undeniable.

- New reliable POC diagnostic tests are necessary for both bubonic and pneumonic plague for an efficient outbreak response, especially for pneumonic plague outbreaks.
- The validation of therapeutic alternatives to streptomycin is urgently needed.
- It is necessary to develop a better understanding of human immune responses to plague and to use that information for accelerating vaccine development and validation.

Acknowledgments

List of the other participants to the Plague Workshop (by alphabetical order): Fabrice Biot, Institut de Recherche Biomédicale des Armées, France; Carine Brouat, IRD, France; Simon Cauchemez, Infectious Diseases Mathematical Modelling Unit, Institut Pasteur, Paris, France; Rob Cohen, USAID, Washington, DC, USA; Koussay Dellagy, Department of International Affairs, Institut Pasteur, Paris, France; Nathalie Denoyes, Institut Pasteur, Paris, France; Hebert Echenique-Rivera, Yersinia Unit, Institut Pasteur, Paris, France; Florence Fouque, TDR, WHO, Lyon, France; Stephen Francesconi, Defence Threat Reduction Agency, Washington, DC, USA; Anna Funk, Emerging Diseases Epidemiology Unit, Institut Pasteur, Paris, France; Finnian Hanrahan, DG Research, European Commission, Brussels, Belgium; Mireille Harimalala, Medical Entomology Unit, Institut Pasteur de Madagascar, Antananarivo, Madagascar; Nadia Khellef, Institut Pasteur, Paris, France; Anne-Sophie Le Guern, Yersinia Unit, Institut Pasteur, Paris, France; Nadine Lemaitre, Bacteriology Department, CHU Lille, France; Jean-Claude Manuguerra, CIBU, Institut Pasteur, Paris, France; Jodie Mac Vernon, GLoPID-R, University of Melbourne, Australia; Serge Morand, CIRAD, Bangkok, Thailand; Birgit Nikolay, Infectious Diseases Mathematical Modelling Unit, Institut Pasteur, Paris, France; Juliette Paireau, Infectious Diseases Mathematical Modelling Unit, Institut Pasteur, Paris, France; Anna Paoletti, Ministry for Higher Education and Research, Paris, France; Feno MJ Rakotoarimanana, Epidemiology and Clinical Research Unit, Institut Pasteur de Madagascar, Antananarivo, Madagascar; Zely Randriamanatany, Ministry of Public Health, Antananarivo, Madagascar; Laurent Raskine, Fondation Mérieux; Stéphanie Simon, CEA de Saclay, France; Cathy Roth, Department for International Development, London, UK; Alex Salam, Epidemic Diseases Research Group Oxford (ERGO), Nuffield Department of Medicine, University of Oxford, Oxford, UK; Florent Sebbane, Institut Pasteur de Lille, France; Christophe Shako, Department of Disease Control, Ministry of Health, Democratic Republic of Congo; Quirine Ten Bosch, Epidemiology and Clinical Research Unit, Institut Pasteur de Madagascar, Antananarivo, Madagascar; Kathleen Victoir, Department of International Affairs, Institut Pasteur, Paris, France.

References

1. Pollitzer R. Plague studies. VIII. Clinical aspects. *Bull World Health Organ.* 1953; 9(1):59–129 PMID: [13082390](https://pubmed.ncbi.nlm.nih.gov/13082390/)
2. Mead PS. *Yersinia Species (Including Plague)*. In: Mandell, Douglas, And Bennett's. Principles and practice of infectious diseases, 8th Edition; 2015. pp. 2607–2618
3. Wu L., League of Nations. A treatise on pneumonic plague. Nancy: Berger-Levrault, 1925
4. Stenseth NC, Atshabar BB, Begon M, Belmain SR, Bertherat E, Carniel E et al. Plague: past, present, and future. *PLoS Med.* 2008; 15; 5(1):e3 <https://doi.org/10.1371/journal.pmed.0050003> PMID: [18198939](https://pubmed.ncbi.nlm.nih.gov/18198939/)

5. Bramanti B, Stenseth NC, Walløe L, Lei X. Plague: A Disease Which Changed the Path of Human Civilization. *Adv Exp Med Biol*. 2016; 918:1–26 https://doi.org/10.1007/978-94-024-0890-4_1 PMID: [27722858](https://pubmed.ncbi.nlm.nih.gov/27722858/)
6. Zhou D, Han Y, Song Y, Tong Z, Wang J, Guo Z et al. DNA microarray analysis of genome dynamics in *Yersinia pestis*: insights into bacterial genome microevolution and niche adaptation. *J Bacteriol*. 2004; 186:5138–46 <https://doi.org/10.1128/JB.186.15.5138-5146.2004> PMID: [15262950](https://pubmed.ncbi.nlm.nih.gov/15262950/)
7. Denis DT, Gage KL, Gratz N, Poland JD, Tikhomirov E. Plague manual, Epidemiology, Distribution, Surveillance and Control, WHO 1999. [cited 2020 June 22]. Available from: <http://www.who.int/csr/resources/publications/plague/whocdscsredc992a.pdf?ua=1>
8. Bertherat E. Plague around the world in 2019. *Weekly Epidemiological Report*. 2019; 25:289–292
9. Balakhonov SV, Popova AY, Mishchenko AI, Mikhailov EP, Ezhlova EB, Demina YV et al. A Case of Human Infection with Plague in the Kosh-Agach Region of the Republic of Altai in 2015. Communication 1. Clinical-Epidemiological and Epizootiological Aspects. *Problemy Osobo Opasnykh Infektsii*. 2016; 1:55–60
10. Randremanana R, Andrianaivoarimanana V, Nikolay B, Ramasindrazana B, Paireau J, Ten Bosch QA et al. Epidemiological characteristics of an urban plague epidemic in Madagascar, August–November, 2017: an outbreak report. *Lancet Infect Dis*. 2019; pii: S1473–3099(18)30730-8.
11. Morelli G, Song Y, Mazzoni CJ, Eppinger M, Roumagnac P, Wagner DM et al. *Yersinia pestis* genome sequencing identifies patterns of global phylogenetic diversity. *Nat Genet*. 2010; 42:1140–3. <https://doi.org/10.1038/ng.705> PMID: [21037571](https://pubmed.ncbi.nlm.nih.gov/21037571/)
12. Gani R, Leach S. Epidemiologic determinants for modeling pneumonic plague outbreaks. *Emerg Infect Dis*. 2004; 10:608–14. <https://doi.org/10.3201/eid1004.030509> PMID: [15200849](https://pubmed.ncbi.nlm.nih.gov/15200849/)
13. Hinckley AF, Biggerstaff BJ, Griffith KS, Mead PS. Transmission dynamics of primary pneumonic plague in the USA. *Epidemiol Infect*. 2012; 140:554–60. <https://doi.org/10.1017/S0950268811001245> PMID: [21733272](https://pubmed.ncbi.nlm.nih.gov/21733272/)
14. Ramasindrazana B, Andrianaivoarimanana V, Rakotondramanga JM, Birdsall DN, Ratsitorahina M, Rajerison M. Pneumonic Plague Transmission, Moramanga, Madagascar, 2015. *Emerg Infect Dis*. 2015; 23:521–524.
15. Richard V, Riehm JM, Herindrainy P, Soanandrasana R, Ratsitoharina M, Rakotomanana F et al. Pneumonic Plague Outbreak, Northern Madagascar, 2011. *Emerg Infect Dis*. 2015; 21(1):8–15. <https://doi.org/10.3201/eid2101.131828> PMID: [25530466](https://pubmed.ncbi.nlm.nih.gov/25530466/)
16. Gupta ML, Sharma A. Pneumonic plague, northern India, 2002. *Emerg Infect Dis*. 2007; 13:664–666. <https://doi.org/10.3201/eid1304.051105> PMID: [17561574](https://pubmed.ncbi.nlm.nih.gov/17561574/)
17. Bertherat E, Lamine KM, Formenty P, Thuier P, Mondonge V, Mitifu A, Rahalison L. Major pulmonary plague outbreak in a mining camp in the Democratic Republic of Congo: brutal awakening of an old scourge. *Médecine Trop Rev Corps Santé Colon*. 2005; 65:511–4.
18. Mondonge V, Shako-Lomami JC, Mossoko GM, Kabengele-Obel B, Lobho R, Kambale-Kapund L. Investigation report and support for epidemic of pneumonic plague in HZs of Linga and Rethy. Administrative district of Ituri, Orientale Province, Democratic Republic of the Congo. Democratic Republic of the Congo, 2006.
19. Begier EM, Asiki G, Anywaine Z, Yockey B, Schriefer ME, Aleti P et al. Pneumonic plague cluster, Uganda, 2004. *Emerg Infect Dis*. 2006; 12:460–7. <https://doi.org/10.3201/eid1203.051051> PMID: [16704785](https://pubmed.ncbi.nlm.nih.gov/16704785/)
20. Donaires LF, Céspedes M, Valencia P, Salas JC, Luna ME, Castañeda A et al. Primary pneumonic plague with nosocomial transmission in La Libertad, Peru 2010. *Rev Peru Med Exp Salud Publica*. 2010; 27:326–36. <https://doi.org/10.1590/s1726-46342010000300004> PMID: [21152724](https://pubmed.ncbi.nlm.nih.gov/21152724/)
21. Luo H, Dong X, Li F, Xie X, Song Z, Shao Z et al. Cluster of primary pneumonic plague transmitted in a truck cab in a new enzootic focus in China. *Am J Trop Med Hyg*. 2013; 88:923–8. <https://doi.org/10.4269/ajtmh.12-0163> PMID: [23509116](https://pubmed.ncbi.nlm.nih.gov/23509116/)
22. Gamsa M. The epidemic of pneumonic plague in Manchuria 1910–1911. *Past and Present*. 2006; 190:147–84.
23. Baril L, Vallès X, Stenseth NC, Rajerison M, Ratsitorahina M, Pizarro-Cerdá J et al. Can we make human plague history? A call to action. *BMJ Glob Health*. 2019; 4:e001984. <https://doi.org/10.1136/bmjgh-2019-001984> PMID: [31799005](https://pubmed.ncbi.nlm.nih.gov/31799005/)
24. KI Gage, Kosoy MY. Natural history of plague: perspectives from more than a century of research. *Annu Rev Entomol*. 2005; 50:505–28. <https://doi.org/10.1146/annurev.ento.50.071803.130337> PMID: [15471529](https://pubmed.ncbi.nlm.nih.gov/15471529/)
25. Salkeld DJ, Salathé M, Stapp P, Jones JH. Plague outbreaks in prairie dog populations explained by percolation thresholds of alternate host abundance. *Proc Natl Acad Sci U S A*. 2010; 107: 14247–14250. <https://doi.org/10.1073/pnas.1002826107> PMID: [20660742](https://pubmed.ncbi.nlm.nih.gov/20660742/)

26. Andrianaivoarimanana V, Kreppel K, Elissa N, Duplantier JM, Carniel E, Rajerison M et al. Understanding the persistence of plague foci in Madagascar. *PLoS Negl Trop Dis*. 2013; 7:e2382. <https://doi.org/10.1371/journal.pntd.0002382> PMID: 24244760
27. Kreppel KS, Telfer S, Rajerison M, Morse A, Baylis M. Effect of temperature and relative humidity on the development times and survival of *Synopsyllus fonquerniei* and *Xenopsylla cheopis*, the flea vectors of plague in Madagascar. *Parasites & Vectors*. 2016; 9:82.
28. Dean KR, F. Krauer F, Walløe L, Lingjærde OC, Bramanti B, Stenseth NC et al. Human ectoparasites and the spread of plague in Europe during the Second Pandemic. *Proc Natl Acad Sci U S A*. 2018; 115:1304–1309. <https://doi.org/10.1073/pnas.1715640115> PMID: 29339508
29. Piarroux R, Abedi AA, Shako JC, Kebela B, Karhemere S, Diatta G et al. Plague epidemics and lice, Democratic Republic of the Congo. *Emerg Infect Dis*. 2013; 19:505–506. <https://doi.org/10.3201/eid1903.121542> PMID: 23750356
30. Ratovonjato J, Rajerison M, Rahelinirina S, Boyer S. *Yersinia pestis* in *Pulex irritans* fleas during plague outbreak, Madagascar. *Emerg. Infect*. 2014; 20:1414–1415.
31. Rahalison L, Ranjalahy M, Duplantier JM, Duchemin JB, Ravelosaona J, Ratsifasoamanana L et al. Susceptibility to plague of the rodents in Antananarivo, Madagascar. *Adv Exp Med Biol*. 2003; 529:439–42. https://doi.org/10.1007/0-306-48416-1_87 PMID: 12756805
32. Tollenaere C, Rahalison L, Ranjalahy M, Duplantier JM, Rahelinirina S, Telfer S et al. Susceptibility to *Yersinia pestis* experimental infection in wild *Rattus rattus*, reservoir of plague in Madagascar. *Ecohealth*. 2010; 7:242–247. <https://doi.org/10.1007/s10393-010-0312-3> PMID: 20443044
33. Gilbert A, Loiseau A, Duplantier JM, Rahelinirina S, Rahalison L, Chanteau S et al. Genetic structure of black rat populations in a rural plague focus in Madagascar. *Can J Zool*. 2007; 85:965–972.
34. Gascuel F, Choisy M, Duplantier JM, Débarre F, Brouat C. Host resistance, population structure and the long-term persistence of bubonic plague: contributions of a modelling approach in the Malagasy focus. *PLoS Comput Biol*. 2013; 9:e1003039. <https://doi.org/10.1371/journal.pcbi.1003039> PMID: 23675291
35. Andrianaivoarimanana V, Telfer S, Rajerison M, Ranjalahy MA, Andriamiarimanana F, Rahaingosoa-mamitiana C et al. Immune responses to plague infection in wild *Rattus rattus*, in Madagascar: a role in foci persistence? *PLoS ONE*. 2012; 7:e38630. <https://doi.org/10.1371/journal.pone.0038630> PMID: 22719908
36. Markman DW, Antolin MF, Bowen RA, Wheat WH, Woods M, Gonzalez-Juarrero M et al. *Yersinia pestis* Survival and Replication in Potential Ameba Reservoir. *Emerg Infect Dis*. 2018; 24:294–302. <https://doi.org/10.3201/eid2402.171065> PMID: 29350155
37. Schmid BV, Jesse M, Wilschut LI, Viljugrein H, Heesterbeek JA. Local persistence and extinction of plague in a metapopulation of great gerbil burrows, Kazakhstan. *Epidemics*. 2012; 4:211–218. <https://doi.org/10.1016/j.epidem.2012.12.003> PMID: 23351373
38. Samia NI, Kausrud KL, Heesterbeek H, Ageyev V, Begon M, Chan KS et al. Dynamics of the plague-wildlife-human system in Central Asia are controlled by two epidemiological thresholds. *Proc Natl Acad Sci U S A*. 2011; 108:14527–14532. <https://doi.org/10.1073/pnas.1015946108> PMID: 21856946
39. Ayyadurai S, Houhamdi L, Lepidi H, Nappez C, Raoult D, Drancourt M. Long-term persistence of virulent *Yersinia pestis* in soil. *Microbiology*. 2008; 9:2865–2871.
40. Eisen RJ, Petersen JM, Higgins CL, Wong D, Levy CE, Mead PS et al. Persistence of *Yersinia pestis* in soil under natural conditions. *Emerg Infect Dis*. 2008; 14: 941–3. <https://doi.org/10.3201/eid1406.080029> PMID: 18507908
41. Miarinjara A, Boyer S. Current Perspectives on Plague Vector Control in Madagascar: Susceptibility Status of *Xenopsylla cheopis* to 12 Insecticides. *PLoS Negl Trop Dis*. 2016; 10:e0004414. <https://doi.org/10.1371/journal.pntd.0004414> PMID: 26844772
42. Miarinjara A, Vergain J, Kavaruganda JM, Rajerison M, Boyer S. Plague risk in vulnerable community: assessment of *Xenopsylla cheopis* susceptibility to insecticides in Malagasy prisons. *Infect Dis Poverty*. 2017; 6:141. <https://doi.org/10.1186/s40249-017-0356-5> PMID: 29110719
43. Lee MJ, Byers KA, Donovan CM, Bidulka JJ, Stephen C, Patrick DM et al. Effects of Culling on *Leptospira interrogans* Carriage by Rats. *Emerging Infect Dis*. 2018; 24: 356–360. <https://doi.org/10.3201/eid2402.171371> PMID: 29350160
44. Bielby J, Vial F, Woodroffe R, Donnelly CA. Localised Badger Culling Increases Risk of Herd Breakdown on Nearby, Not Focal, Land. *PLoS ONE*. 2016; 11:e0164618. <https://doi.org/10.1371/journal.pone.0164618> PMID: 27749934
45. Rivière-Cinnamond A, Santandreu A, Luján A, Mertens F, Espinoza JO, Carpio Y et al. Identifying the social and environmental determinants of plague endemicity in Peru: insights from a case study in

- Ascope, La Libertad. *BMC Public Health*. 2018; 18:220. <https://doi.org/10.1186/s12889-018-5062-0> PMID: 29409470
46. Rahelinirina S, Duplantier JM, Ratovonjato J, Ramilijaona O, Ratsimba M, Rahalison L. Study on the movement of *Rattus rattus* and evaluation of the plague dispersion in Madagascar. *Vector Borne Zoonotic Dis*. 2010; 10:77–84. <https://doi.org/10.1089/vbz.2009.0019> PMID: 20158335
 47. Abedi AA, Shako JC, Gaudart J, Sudre B, Ilunga BK, Shamamba SKB et al. Ecologic Features of Plague Outbreak Areas, Democratic Republic of the Congo. *Emerg Infect Dis*. 2018; 24:210–220. <https://doi.org/10.3201/eid2402.160122> PMID: 29350136
 48. Brouat C, Tollenaere C, Estoup A, Loiseau A, Sommer S, Soanandrasana R et al. Invasion genetics of a human commensal rodent: the black rat *Rattus rattus* in Madagascar. *Mol Ecol*. 2014; 23:4153–4167. <https://doi.org/10.1111/mec.12848> PMID: 24975563
 49. Ben Ari MT, Neerinx S, K. L. Gage KL, Kreppel K, Laudisoit A, Leirs H et al. Plague and Climate: Scales Matter. *PLoS Pathog*. 2011; 7:e1002160. <https://doi.org/10.1371/journal.ppat.1002160> PMID: 21949648
 50. MacMillan K, Monaghan AJK, Apangu T, Griffith KS, Mead PS, Acayo S et al. Climate predictors of the spatial distribution of human plague cases in the West Nile region of Uganda. *Am J Trop Med Hyg*. 2012; 86:514–23. <https://doi.org/10.4269/ajtmh.2012.11-0569> PMID: 22403328
 51. Moore SM, Monaghan A, Borchert JN, Mpanga JT, Atiku LA, Boegler KA et al. Seasonal fluctuations of small mammal and flea communities in a Ugandan plague focus: evidence to implicate *Arvicanthis niloticus* and *Crocidura* spp. as key hosts in *Yersinia pestis* transmission. *Parasit Vectors*. 2015; 8:11. <https://doi.org/10.1186/s13071-014-0616-1> PMID: 25573253
 52. Ari TB, Gershunov A, Tristan R, Cazelles B, Gage K, Stenseth NC. Interannual Variability of Human Plague Occurrence in the Western United States Explained by Tropical and North Pacific Ocean Climate Variability. *Am J Trop Med Hyg*. 2010; 83: 624–632. <https://doi.org/10.4269/ajtmh.2010.09-0775> PMID: 20810830
 53. Ensore RE, Biggerstaff BJ, Brown TL, Fulgham RE, Reynolds PJ, Engelthaler DM et al. Modelling relationships between climate and the frequency of human plague cases in the south-western United States, 1960–1997. *Am J Trop Med Hyg*. 2002; 66: 186–196. <https://doi.org/10.4269/ajtmh.2002.66.186> PMID: 12135292
 54. Kreppel KS, Caminade C, Telfer S, Rajerison M, Rahalison L, Morse A et al. A non-stationary relationship between global climate phenomena and human plague incidence in Madagascar. *PLoS Negl Trop Dis*. 2014; 8:e3155. <https://doi.org/10.1371/journal.pntd.0003155> PMID: 25299064
 55. Giorgi E, Kreppel K, Diggle PJ, Caminade C, Ratsitorahina M, Rajerison M et al. Modelling of spatio-temporal variation in plague incidence in Madagascar from 1980 to 2007. *Spat Spatiotemporal Epidemiol*. 2016; 19:125–135. <https://doi.org/10.1016/j.sste.2016.10.001> PMID: 27839576
 56. MacMillan K, Ensore RE, Ogen-Odoi A, Borchert JN, Babi N, Amatre G et al. Landscape and residential variables associated with plague-endemic villages in the West Nile region of Uganda. *Am J Trop Med Hyg*. 2011; 84: 435–442. <https://doi.org/10.4269/ajtmh.2011.10-0571> PMID: 21363983
 57. Eisen RJ, Griffith KS, Borchert JN, MacMillan K, Apangu T, Owor N et al. Assessing human risk of exposure to plague bacteria in north-western Uganda based on remotely sensed predictors. *Am J Trop Med Hyg*. 2010; 82: 904–911. <https://doi.org/10.4269/ajtmh.2010.09-0737> PMID: 20439974
 58. Goel S, Kaur H, Gupta AK, Chauhan U, Singh A. Socio-epidemiological determinants of 2002 plague outbreak in Himachal Pradesh, India: a qualitative study. *BMC Public Health*. 2002; 14:325.
 59. Hieronimo P, Kimaro DN, Kihupi NI, Gulinck H, Mulungu LS, Msanya BM et al. Land use determinants of small mammal abundance and distribution in a plague endemic area of Lushoto District, Tanzania. *Tanzan J Health Res*. 2014; 16: 219–28. <https://doi.org/10.4314/thrb.v16i3.8> PMID: 26867281
 60. Vogler AJ, Andrianaivoarimanana V, Telfer S, Hall CM, Sahl JW, Hepp CM et al. Temporal phylogeography of *Yersinia pestis* in Madagascar: Insights into the long-term maintenance of plague. *PLoS Negl Trop Dis*. 2017; 11:e0005887 <https://doi.org/10.1371/journal.pntd.0005887> PMID: 28873412
 61. Brouat C, Rahelinirina S, Loiseau A, Rahalison L, Rajerison M, Laffly D et al. Plague circulation and population genetics of the reservoir *Rattus rattus*: the influence of topographic relief on the distribution of the disease within the Madagascar focus. *PLoS Negl Trop Dis*. 2013; 7: e2266. <https://doi.org/10.1371/journal.pntd.0002266> PMID: 23755317
 62. Vogler AJ, Chan F, Wagner DM, Roumagnac P, Lee J, Nera R et al. Phylogeography and molecular epidemiology of *Yersinia pestis* in Madagascar. *PLoS Negl Trop Dis*. 2011; 5: e1319. <https://doi.org/10.1371/journal.pntd.0001319> PMID: 21931876
 63. Wilschut LI, Addink EA, Heesterbeek H, Heier L, Laudisoit A, Begon M et al. Potential corridors and barriers for plague spread in Central Asia. *Int J Health Geogr*. 2013; 12:49. <https://doi.org/10.1186/1476-072X-12-49> PMID: 24171709

64. Andrianaivoarimanana V, Piola P, Wagner DM, Rakotomanana F, Maheriniaina V, Andrianalimanana S et al. Trends of Human Plague, Madagascar, 1998–2016. *Emerg Infect Dis.* 2019; 25:220–228. <https://doi.org/10.3201/eid2502.171974> PMID: 30666930
65. Chanteau S, Rahalison L, Ralafiarisoa L, Foulon J, Ratsitorahina M, Ratsifasoamanana L et al. Development and testing of a rapid diagnostic test for bubonic and pneumonic plague. *Lancet.* 2003; 361:211–216. [https://doi.org/10.1016/S0140-6736\(03\)12270-2](https://doi.org/10.1016/S0140-6736(03)12270-2) PMID: 12547544
66. Hinnebusch J, Schwan TG. New method for plague surveillance using polymerase chain reaction to detect *Yersinia pestis* in fleas. *J Clin Microbiol.* 1993; 31: 1511–1514. <https://doi.org/10.1128/JCM.31.6.1511-1514.1993> PMID: 8314993
67. Higgins JA, Ezzell J, Hinnebusch BJ, Shipley M, Henchal EA, Ibrahim MS. 5' nuclease PCR assay to detect *Yersinia pestis*. *J Clin Microbiol.* 1998; 36:2284–2288. <https://doi.org/10.1128/JCM.36.8.2284-2288.1998> PMID: 9666006
68. Loiez C, Herwegh S, Wallet F, Armand S, Guinet F, Courcol RJ. Detection of *Yersinia pestis* in sputum by real-time PCR. *J Clin Microbiol.* 2003; 41: 4873–4875. <https://doi.org/10.1128/jcm.41.10.4873-4875.2003> PMID: 14532247
69. Rahalison L, Vololonirina E, Ratsitorahina M, Chanteau SJ. Diagnosis of bubonic plague by PCR in Madagascar under field conditions. *J Clin Microbiol.* 2000; 38:260–263. PMID: 10618097
70. Neubauer H, Rahalison L, Brooks TJ, Aleksic S, Chanteau S, Spletstösser WD. Serodiagnosis of human plague by an anti-F1 capsular antigen specific IgG/IgM ELISA and immunoblot. *Epidemiol Infect.* 2000; 125: 593–597. <https://doi.org/10.1017/s095026880004647> PMID: 11218210
71. Ratsitorahina M, Rabarijaona L, Chanteau S, Boisier P. Seroepidemiology of human plague in the Madagascar highlands. *Trop Med Int Health.* 2000; 5:94–8. <https://doi.org/10.1046/j.1365-3156.2000.00521.x> PMID: 10747268
72. Sodikoff GM. Zoonotic Semiotics: Plague Narratives and Vanishin Signs in Madagascar. *Med Anthropol Q.* 2019; 33:42–59. <https://doi.org/10.1111/maq.12487> PMID: 30811661
73. Li B, Guo Y, Guo Z, Liang Y, Zhu Z, Zhou Q et al. Serologic survey of the sentinel animals for plague surveillance and screening for complementary diagnostic markers to F1 antigen by protein microarray. *Am J Trop Med Hyg.* 2008; 79:799–802 (2008). PMID: 18981526
74. Brown HE, Levy CE, Ensore RE, Schriefer ME, DeLiberto TJ, Gage KL et al. Annual seroprevalence of *Yersinia pestis* in coyotes as predictors of interannual variation in reports of human plague cases in Arizona, United States. *Vector Borne Zoonotic Dis.* 2011; 11:1439–46. <https://doi.org/10.1089/vbz.2010.0196> PMID: 21756031
75. Mwengee W, Butler T, Mgema S, Mhina G, Almasi Y, Bradley C et al. Treatment of plague with gentamicin or doxycycline in a randomized clinical trial in Tanzania. *Clin Infect Dis.* 2006; 42:614–21. <https://doi.org/10.1086/500137> PMID: 16447105
76. Bertherat E, Mueller MJ, Shako JC, Picardeau M. Discovery of a leptospirosis cluster amidst a pneumonic plague outbreak in a miners' camp in the Democratic Republic of the Congo. *Int J Environ Res Public Health.* 2014; 11:1824–1833. <https://doi.org/10.3390/ijerph110201824> PMID: 24514425
77. Apangu T, Griffith K, Abaru J, Candini G, Apio H, Okoth F et al. Successful Treatment of Human Plague with Oral Ciprofloxacin. *Emerg Infect Dis.* 2017; 23: 553–555.
78. Welch TJ, Fricke WF, McDermott PF, White DG, Rosso ML, Rasko DA et al. Multiple antimicrobial resistance in plague: an emerging public health risk. *PLoS ONE.* 2007; 21:e309.
79. Galimand M, Carniel E, Courvalin P. Resistance of *Yersinia pestis* to antimicrobial agents. *Antimicrob Agents Chemother.* 2006; 50:3233–3236. <https://doi.org/10.1128/AAC.00306-06> PMID: 17005799
80. Cabanel N, Bouchier C, Rajerison M, Carniel E. Plasmid-mediated doxycycline resistance in a *Yersinia pestis* strain isolated from rat. *Int J Antimicrob Agents.* 2018; 51:249–254. <https://doi.org/10.1016/j.ijantimicag.2017.09.015> PMID: 29030266
81. Atkinson S, Williams PF. *Yersinia* virulence factors—a sophisticated arsenal for combating host defences. *F1000Res.* 2016; 14:5.
82. Zhou D, Yank R. Molecular Darwinian evolution of virulence in *Yersinia pestis*. *Infect Immun.* 2009; 77:2242–2250.
83. Hinnebusch BJ, D.L. Erickson DL. *Yersinia pestis* biofilm in the flea vector and its role in the transmission of plague. *Curr Top Microbiol Immunol.* 2008; 322:229–248. https://doi.org/10.1007/978-3-540-75418-3_11 PMID: 18453279
84. Chouikha I, Hinnebusch BJ. *Yersinia*—flea interactions and the evolution of the arthropod-borne transmission route of plague. *Curr Opin Microbiol.* 2012; 15:239–246. <https://doi.org/10.1016/j.mib.2012.02.003> PMID: 22406208
85. Han Y, Fang H, Liu L, Zhou D. Genetic Regulation of *Yersinia pestis*. *Adv Exp Med Biol.* 2016; 918:223–256. https://doi.org/10.1007/978-94-024-0890-4_8 PMID: 27722865

86. Easterday WR, Kausrud KL, Star B, Heier L, Haley BJ, Ageyev V et al. An additional step in the transmission of *Yersinia pestis*? *ISME J*. 2012; 6: 231–236. <https://doi.org/10.1038/ismej.2011.105> PMID: 21833036
87. Sun YC, Jarrett CO, Bosio CF, Hinnebusch BJ. Retracing the evolutionary path that led to flea-borne transmission of *Yersinia pestis*. *Cell Host Microbe*. 2014; 15:578–586. <https://doi.org/10.1016/j.chom.2014.04.003> PMID: 24832452
88. Hinnebusch BJ. The Evolution of Flea-borne transmission in *Yersinia pestis*. *Curr Issues Mol Biol*. 2005; 7:197–212. PMID: 16053250
89. Lewnard JA, Townsend JP. Climatic and evolutionary drivers of phase shifts in the plague epidemics of colonial India. *Proc Natl Acad Sci U S A*. 2016; 113:14601–14608. <https://doi.org/10.1073/pnas.1604985113> PMID: 27791071
90. Laayouni H, Oosting M, Luisi P, Ioana M, Alonso S, Ricaño-Ponce I et al. Convergent evolution in European and Roma populations reveals pressure exerted by plague on Toll-like receptors. *Proc Natl Acad Sci U S A*. 2014; 111:2668–73. <https://doi.org/10.1073/pnas.1317723111> PMID: 24550294
91. Price PA, Jin J, Goldman WE. Pulmonary infection by *Yersinia pestis* rapidly establishes a permissive environment for microbial proliferation. *Proc Natl Acad Sci U S A*. 2012; 109:3083–8. <https://doi.org/10.1073/pnas.1112729109> PMID: 22308352
92. Butler T. Plague history: Yersin's discovery of the causative bacterium in 1894 enabled, in the subsequent century, scientific progress in understanding the disease and the development of treatments and vaccines. *Clin Microbiol Infect*. 2014; 20:202–9. <https://doi.org/10.1111/1469-0691.12540> PMID: 24438235
93. Feodorova VA, Sayapina LV, Corbel MJ, Motin VL. Russian vaccines against especially dangerous bacterial pathogens. *Emerg Microbes Infect*. 2014; 3:e86. <https://doi.org/10.1038/emi.2014.82> PMID: 26038506
94. Verma SK, Tuteja U. Plague Vaccine Development: Current Research and Future Trends. *Front Immunol*. 2016; 7:602.
95. WHO (2018) Plague vaccines workshop, April 23, 2018. [cited 2020 Jan 1]. Available from: http://www.who.int/blueprint/what/norms-standards/Plague_vaccines_workshop-23-april-2018.
96. Pastoret PP, Brochier B. The development and use of a vaccinia-rabies recombinant oral vaccine for the control of wildlife rabies: a link between Jenner and Pasteur. *Epidemiol Infect*. 1996; 116:230–40.
97. Vallée E, Ridler AL, Heuer C, Collins-Emerson JM, Benschop J, Wilson PR. Effectiveness of a commercial leptospiral vaccine on urinary shedding in naturally exposed sheep in New Zealand. *Vaccine*. 2017; 35: 1362–1368. <https://doi.org/10.1016/j.vaccine.2016.04.037> PMID: 27109564
98. Bonvicino CR, Oliveira JA, Corderio-Estrela P, D'andrea PS, Almeida AM. A Taxonomic Update of Small Mammal Plague Reservoirs in South America. *Vector Borne Zoonotic Dis*. 2015; 15:571–9. <https://doi.org/10.1089/vbz.2015.1788> PMID: 26393822
99. Vogler AJ, Chan F, Nottingham R, Andersen G, Drees K, Beckstrom-Sternberg SM et al. A decade of plague in Mahajanga, Madagascar: insights into the global maritime spread of pandemic plague. *MBio*. 2013; 4:e00623–12. <https://doi.org/10.1128/mBio.00623-12> PMID: 23404402
100. Rahelinirina S, Rajerison M, Telfer S, Savin C, Carniel E, Duplantier JM. The Asian house shrew *Suncus murinus* as a reservoir and source of human outbreaks of plague in Madagascar. *PLoS Negl Trop Dis*. 2017; 11:e0006072. <https://doi.org/10.1371/journal.pntd.0006072> PMID: 29155827
101. Bertherat E, Bekhoucha S, Chougrani S, Razik F, Duchemin JB, Houti L. Plague reappearance in Algeria after 50 years. *Emerg Infect Dis* 2007; 13:1459–1462. <https://doi.org/10.3201/eid1310.070284> PMID: 18257987
102. Cabanel N, Leclercq A, Chenal-Francois V, Annajar B, Rajerison M, Bekhoucha S et al. Plague outbreak in Libya, 2009, unrelated to plague in Algeria. *Emerg Infect Dis*. 2013; 19:230–6. <https://doi.org/10.3201/eid1902.121031> PMID: 23347743
103. Neerinx S, Bertherat E, Leirs H. Human plague occurrences in Africa: an overview from 1877 to 2008. *Trans Royal Soc Trop Med Hyg*. 2010; 104: 97–103.
104. Nuriddin A, Jalloh MF, Meyer E, Bunnell R, Bio FA, Jalloh MB et al. Trust, fear, stigma and disruptions: community perceptions and experiences during periods of low but ongoing transmission of Ebola virus disease in Sierra Leone, 2015. *BMJ Glob Health*. 2018; 3:e000410. <https://doi.org/10.1136/bmjgh-2017-000410> PMID: 29629189
105. Wagenaar BH, Augusto O, Beste J, Toomay SJ, Wickett E, Dunbar N et al. The 2014–2015 Ebola virus disease outbreak and primary healthcare delivery in Liberia: Time-series analyses for 2010–2016. *PLoS Med*. 2018; 15:e1002508. <https://doi.org/10.1371/journal.pmed.1002508> PMID: 29462138

106. Sams K, Desclaux A, Anoko J, Akindès F, Egrot M, Sow K et al. Mobilising experience from Ebola to address plague in Madagascar and future epidemics. *Lancet*. 2017; 390:2624–2625. [https://doi.org/10.1016/S0140-6736\(17\)33088-X](https://doi.org/10.1016/S0140-6736(17)33088-X) PMID: 29195687
107. Stellmach D, Beshar I, Bedford J, du Cros P, Stringer B. Anthropology in public health emergencies: what is anthropology good for? *BMJ Glob. Health*. 2018; 3:e000534. <https://doi.org/10.1136/bmjgh-2017-000534> PMID: 29607097
108. Mirarinjara A, Rogier C, Harimalala M, Ramihangihajason TR, Boyer S. *Xenopsylla brasiliensis* Fleas in Plague Focus Areas, Madagascar. *Emerg Infect Dis*. 2016; 22:2207–8. <https://doi.org/10.3201/eid2212.160318> PMID: 27513742
109. Ruiz A. Plague in the Americas. *Emerg Infect Dis*. 2001; 7:539–40. <https://doi.org/10.3201/eid0707.017718> PMID: 11485656
110. Anisimov AP, Lindler LE, Pier GB. Intraspecific diversity of *Yersinia pestis*. *Clin Microbiol Rev*. 2004; 17:434–64. <https://doi.org/10.1128/cmr.17.2.434-464.2004> PMID: 15084509
111. Riehm JM, Tserennorov D, Kiefer D, Stuermer IW, Tomaso H, Zoller L et al. *Yersinia pestis* in small rodents, Mongolia. *Emerg Infect Dis*. 2011; 17:1320–2. <https://doi.org/10.3201/eid1707.100740> PMID: 21762605
112. Ebright JR, Altantsetseg T, Oyungerel R. Emerging Infectious Diseases in Mongolia. *Emerg Infect Dis*. 2003; 9: 1509–1515. <https://doi.org/10.3201/eid0912.020520> PMID: 14720388
113. Galdan B, Baatar U, Molotov B, Dashdavaa O. Plague in Mongolia. *Vector Borne Zoonotic Dis*. 2010; 10:69–75. <https://doi.org/10.1089/vbz.2009.0047> PMID: 20158334