



**HAL**  
open science

# Snapshots of the Signaling Complex DesK:DesR in Different Functional States Using Rational Mutagenesis and X-ray Crystallography

Juan A Imelio, Nicole Larrieux, Ariel E Mechaly, Felipe Trajtenberg,  
Alejandro Buschiazzo

► **To cite this version:**

Juan A Imelio, Nicole Larrieux, Ariel E Mechaly, Felipe Trajtenberg, Alejandro Buschiazzo. Snapshots of the Signaling Complex DesK:DesR in Different Functional States Using Rational Mutagenesis and X-ray Crystallography. Bio-protocol , 2017, 7 (16), 10.21769/BioProtoc.2510 . pasteur-02872312

**HAL Id: pasteur-02872312**

**<https://pasteur.hal.science/pasteur-02872312>**

Submitted on 17 Jun 2020

**HAL** is a multi-disciplinary open access archive for the deposit and dissemination of scientific research documents, whether they are published or not. The documents may come from teaching and research institutions in France or abroad, or from public or private research centers.

L'archive ouverte pluridisciplinaire **HAL**, est destinée au dépôt et à la diffusion de documents scientifiques de niveau recherche, publiés ou non, émanant des établissements d'enseignement et de recherche français ou étrangers, des laboratoires publics ou privés.



Distributed under a Creative Commons Attribution 4.0 International License

## Snapshots of the Signaling Complex DesK:DesR in Different Functional States Using Rational Mutagenesis and X-ray Crystallography

Juan Andres Imelio<sup>1</sup>, Nicole Larrieux<sup>1</sup>, Ariel Edgardo Mechaly<sup>1</sup>,  
Felipe Trajtenberg<sup>1</sup> and Alejandro Buschiazzi<sup>1,2,\*</sup>

<sup>1</sup>Laboratory of Molecular and Structural Microbiology, Institut Pasteur de Montevideo, Montevideo, Uruguay; <sup>2</sup>Department of Microbiology, Institut Pasteur, Paris, France

\*For correspondence: [alebus@pasteur.edu.uy](mailto:alebus@pasteur.edu.uy)

**[Abstract]** We have developed protocols to generate site-specific variants of the histidine-kinase DesK and its cognate response regulator DesR, conducive to trapping different signaling states of the proteins. Co-expression of both partners in *E. coli*, ensuring an excess of the regulator, was essential for soluble production of the DesK:DesR complexes and further purification. The 3D structures of the complex trapped in the phosphotransferase and in the phosphatase reaction steps, were solved by X-ray crystallography using molecular replacement. The solution was not trivial, and we found that *in silico*-generated models used as search probes, were instrumental to succeeding in placing a large portion of the complex in the asymmetric unit. Electron density maps were then clear enough to allow for manual model building attaining complete atomic models. These methods contribute to tackling a major challenge in the bacterial signaling field, namely obtaining stable kinase:regulator complexes, in distinct conformational states, amenable for high-resolution crystallographic studies.

**Keywords:** Signaling proteins, Protein phosphorylation, Trapping conformational rearrangements, Structure-based mutagenesis, X-ray crystallography, Protein engineering

**[Background]** Structural information about bacterial signaling complexes, especially of two-component systems (TCSs), is still scarce (Casino *et al.*, 2009; Gao and Stock, 2009). TCSs comprise a sensory histidine-kinase (HK) and a response regulator (RR) partner, present in almost all bacteria, they allow the cells to perceive the environment and to react accordingly through adaptive responses. Structural information is even more limited when it comes to TCS complexes adopting different functional states, despite the importance of such switching mechanism in signal transmission (Trajtenberg *et al.*, 2016). We have studied the DesK-DesR pathway (de Mendoza, 2014), a TCS from *Bacillus subtilis* involved in regulating the cell membrane composition in adaptation to cues that reduce the bilayer's fluidity, such as cold shock.

The protocols we have developed were aimed at overcoming major technical bottlenecks, encompassing complex purification, crystallization and X-ray structure determination. Most of these hurdles likely arise from the intrinsic flexibility and heterogeneity that characterize TCS proteins. With the purpose of trapping the DesK:DesR complex in defined signaling steps, it is useful to recall some details based on previous findings from our laboratory. The protocols have been developed to work with DesKC, a truncated DesK variant comprising the entire cytoplasmic region of DesK, without the trans-

membrane sensory domain, which is catalytically competent to phosphotransfer to DesR, as well as to dephosphorylate P~DesR (Albanesi *et al.*, 2004). As for the response regulator partner, DesR, we have chosen to use a truncated form, including the entire receiver domain (REC), competent for all DesK-mediated phosphotransfer reactions (Trajtenberg *et al.*, 2014), but lacking the C-terminal DNA-binding domain, and thus minimizing potential inter-domain flexibility issues.

In order to trap the DesKC:DesR complex in the phosphotransfer step of the signaling pathway, we chose to use the phosphomimetic point mutant DesKC-His<sub>188</sub>Glu. This variant, when not bound to DesR, adopts a structural conformation very similar to the phosphorylated form of wild-type DesKC (Albanesi *et al.*, 2009), hence an attractive template to mimic the phosphorylated HK just prior to the transfer reaction, also avoiding effective transfer to take place.

On the other hand, in order to trap the DesKC:DesR complex in the dephosphorylation step, previous work was instrumental by uncovering a switch mechanism of DesK, swapping between 'active' (kinase-on/phosphatase-off) and 'inactive' (phosphatase-on/kinase-off traits) states of the kinase (Albanesi *et al.*, 2009). Briefly, the conformational transition of DesK from its kinase-active to the inhibited form, implicates the assembly of a coiled-coil structure within the central Dimerization and His-phosphotransfer (DHP) domain, a coiled-coil that is otherwise 'broken' when the kinase is active. The DHP, an all-helical domain, connects the trans-membrane sensor with the Catalytic ATP-binding (CA) domains, hence the identified DHP's conformational switching plays a key role in signal transmission through long-range allosteric rearrangements. Such mechanistic insights later led to constructing a coiled-coil hyper-stabilized variant (DesK<sub>STA</sub>) (Saita *et al.*, 2015), harboring point-mutations at key positions (Ser<sub>150</sub>Ile, Ser<sub>153</sub>Leu and Arg<sub>157</sub>Ile) that stabilize a phosphatase-constitutive form (Saita *et al.*, 2015). The corresponding soluble construct, with the trans-membrane domain truncated (DesKC<sub>STAB</sub>), indeed displays a phosphatase-trapped 3D structure (Trajtenberg *et al.*, 2016). DesKC<sub>STAB</sub> was used to trap the DesKC:DesR complex in the dephosphorylation step, as described in this protocol.

## **Materials and Reagents**

1. P2, P200 and P1000 micropipette tips, autoclaved (Gilson, catalog numbers: F161630, F161930 and F161670)
2. 1.5 ml Eppendorf tubes (Eppendorf, catalog number: 022364111)
3. 15 and 50 ml Falcon tubes (Corning, catalog numbers: 352097 and 352098)
4. Minisart 0.45 µm syringe filter (Sartorius, catalog number: 16555-K)
5. 96-Well Clear V-Bottom 2 ml polypropylene deep well plate (Corning, catalog number: 3960)
6. Minisart 0.22 µm syringe filter (Sartorius, catalog number: 16532-K)
7. 1 L polypropylene bottles (Thermo Fisher Scientific, Thermo Scientific™, catalog number: 3140-1002)
8. SnakeSkin Dialysis Tubing 3.5K MWCO, 35 mm Dry I.D., 35 feet (Thermo Fisher Scientific, Thermo Scientific™, catalog number: 88244)
9. Vivaspin 6 ml 10,000 MWCO centrifugal concentrator devices (Sartorius, catalog number

- VS0601)
10. Vivaspin 20 ml 10,000 MWCO centrifugal concentrator devices (Sartorius, catalog number VS2001)
  11. Linbro 24-well plates (MP Biomedicals, catalog number: CPL-101)
  12. Cryo-loops (HAMPTON RESEARCH, catalog number: HR4-955)
  13. Cover slide
  14. *Escherichia coli* BL21 (DE3) and TOP10F' strains from stocks stored at -80 °C
  15. pACYCDuet-1 (Novagen) and pQE80L (QIAGEN) plasmids
  16. Tobacco etch virus (TEV) protease (3 mg/ml stock solution, in-house preparation)
  17. Ultra-pure water (> 18 MΩ) filtered with 0.22 μm Express Plus filters (EMD Millipore, catalog number: SCGPT05RE)
  18. Ethanol 95% (Industrial Uruguayan Drugstore)
  19. Chloramphenicol (Sigma-Aldrich, catalog number: C0378, 17 mg/ml stock solution, stored at -20 °C)
  20. Ampicillin (Sigma-Aldrich, catalog number: A9518, 100 mg/ml stock solution, stored at -20 °C)
  21. Magnesium sulfate (MgSO<sub>4</sub>) (Sigma-Aldrich, catalog number: M7506)
  22. Isopropyl β-D-1-thiogalactopyranoside (IPTG) (Euromedex, catalog number: EU0008-B, 1 M stock solution, stored at -20 °C)
  23. Lysozyme (Sigma-Aldrich, catalog number: L6876, 100 mg/ml stock solution)
  24. Triton X-100 (Sigma-Aldrich, catalog number: T9284)
  25. Zinc chloride (ZnCl<sub>2</sub>) (Sigma-Aldrich, catalog number: 229997)
  26. β-Mercaptoethanol (Sigma-Aldrich, catalog number: M6250)
  27. Acrylamide/Bis-acrylamide 30% solution (Sigma-Aldrich, catalog number: A3574)
  28. DNA Ladder GeneRuler 100 bp Plus (Thermo Fisher Scientific, Thermo Scientific™, catalog number: SM0321)
  29. Oligonucleotides for mutagenesis and PCR amplifications (IDT DNA Technologies)
  30. Phusion High Fidelity DNA polymerase (Thermo Fisher Scientific, Thermo Scientific™, catalog number: F530S)
  31. Sodium dodecyl sulfate (Sigma-Aldrich, catalog number: L5750)
  32. Ammonium persulfate (Sigma-Aldrich, catalog number: 248614)
  33. *N,N,N',N'*-Tetramethylethylenediamine (Sigma-Aldrich, catalog number: T9281)
  34. Color Protein Ladder Prestained Broad Range (New England Biolabs, catalog number: P7712S)
  35. Precision Plus Protein Standard All Blue (Bio-Rad Laboratories, catalog number: 1610373)
  36. Brilliant Blue R (Sigma-Aldrich, catalog number: B0149)
  37. Lithium potassium acetyl phosphate (Sigma-Aldrich, catalog number: A0262)
  38. Adenosine 5'-triphosphate (ATP) disodium salt hydrate (Sigma-Aldrich, catalog number: A1852)
  39. β,γ-Methyleneadenosine 5'-triphosphate (AMP-PCP) disodium salt (Sigma-Aldrich, catalog number: M7510)
  40. Trizma base (Sigma-Aldrich, catalog number: T1503)

41. Sodium chloride (NaCl) (Sigma-Aldrich, catalog number: 31434)
42. Magnesium chloride hexahydrate (MgCl<sub>2</sub>·6H<sub>2</sub>O) (Sigma-Aldrich, catalog number: 13152)
43. Polyethylene glycol (PEG) 600 (Sigma-Aldrich, catalog number: 87333)
44. MES (Sigma-Aldrich, catalog number: M8250)
45. Magnesium sulfate (MgSO<sub>4</sub>)
46. Glycerol (AppliChem, catalog number: 131339)
47. Polyethylene glycol (PEG) 4000 (Sigma-Aldrich, catalog number: 95904)
48. Lithium sulfate (Li<sub>2</sub>SO<sub>4</sub>) (Sigma-Aldrich, catalog number: 203653)
49. Beryllium chloride (BeCl<sub>2</sub>) (Sigma-Aldrich, catalog number: 201197)  
*Note: This product has been discontinued.*
50. Sodium fluoride (NaF) (Sigma-Aldrich, catalog number: 71519)
51. Liquid nitrogen
52. Polyethylene glycol (PEG) 3350 (Sigma-Aldrich, catalog number: 202444)
53. Tri-potassium citrate (Sigma-Aldrich, catalog number: P1722)
54. Yeast extract (Sigma-Aldrich, catalog number: Y1625)
55. Tryptone plus (Sigma-Aldrich, catalog number: 61044)
56. Agar (Sigma-Aldrich, catalog number: A9799)
57. EDTA-free protease inhibitor cocktail tablets (Roche Diagnostics, catalog number: 11873580001)
58. Imidazole (Merck, catalog number: 104716)
59. Dithiothreitol (Soltec Ventures, catalog number: M112)
60. Hydrochloric acid solution (Sigma-Aldrich, catalog number: 13-1683)
61. LB medium (see Recipes)
62. 2x YT culture medium (see Recipes)
63. LB agar plates (see Recipes)
64. Lysis buffer (see Recipes)
65. Immobilized Metal Affinity Chromatography (IMAC) binding and washing buffer (see Recipes)
66. IMAC elution buffer (see Recipes)
67. Dialysis buffer (see Recipes)
68. Size Exclusion Chromatography buffer for the phosphatase complex (SEC-P buffer)
69. Size Exclusion Chromatography buffer for the phosphotransferase complex (SEC-PT buffer)

## **Equipment**

1. Pipetman P2 single channel pipette (Gilson, catalog number: F144801)
2. Pipetman P20 single channel pipette (Gilson, catalog number: F123600)
3. Pipetman P200 single channel pipette (Gilson, catalog number: F123601)
4. Pipetman P1000 single channel pipette (Gilson, catalog number: F123602)
5. 250 ml Erlenmeyer flasks (Marienfeld-Superior, catalog number: 4110207)

6. 5 L Erlenmeyer flasks (Marienfeld-Superior, catalog number: 4110217)
7. HisTrap immobilized metal affinity chromatography (IMAC) 5 ml column with Zn-NTA resin (GE Healthcare, catalog number: 17-5248-01. In-house preparation)
8. Superdex S75 26/600 (GE Healthcare, catalog number: 28989334)
9. Stirring magnet (Sigma-Aldrich)
10. Thermomixer C (Eppendorf, model: ThermoMixer<sup>®</sup> C, catalog number: 4053-8223)
11. Digital Ultrasonics Sonifier S-450 cell disruptor/homogenizer (Emerson, Branson Ultrasonics, model: S-450)
12. Multitron Standard incubation shaker (Infors HT)
13. Minispin centrifuge (Eppendorf, model: MiniSpin<sup>®</sup>, catalog number: 5452000018)
14. Refrigerated 5424R Centrifuge (Eppendorf, model: 5424 R, catalog number: 36-102-3795)
15. Refrigerated 5810R Centrifuge (Eppendorf, model: 5810 R, catalog number: 5811000010)
16. Refrigerated Sorvall Lynx4000 centrifuge (Thermo Fisher Scientific, Thermo Scientific<sup>™</sup>, model: Sorvall Lynx4000, catalog number: 75006580)
17. Minipuls 3 peristaltic pump (Gilson, catalog number: F117604)
18. Chromatography instrument ÄKTA purifier (GE Healthcare, model: ÄKTAexpress, catalog number: 18664501)
19. EPS-301 power supply (GE Healthcare, model: EPS 301, catalog number: 18-1130-01)
20. Cary 50 Bio UV-visible spectrophotometer (Varian, model: Cary<sup>®</sup> 50)
21. Alchemist DT (Rigaku, model: Alchemist DT)
22. X-Ray generator MicroMax-007HF (Rigaku, model: MicroMax-007 HF)
23. Multilayer X-ray mirrors Varimax-HF (Rigaku, model: VariMax HF)
24. Image plate area detector MAR345<sup>®</sup> (marXperts, model: mar345)
25. SZX16 microscope (Olympus, model: SZX16)
26. EVOLT E-330 digital camera (Olympus, model: E-330)
27. LG-PS2 light source (Olympus, model: LG-PS2)
28. Linux Computer workstation with OS Centos 7.0

## **Software**

1. Produced diffraction datasets:
  - a. Complex DesKC:DesR-REC in phosphotransferase state, low Mg<sup>2+</sup>:  
<http://dx.doi.org/10.15785/SBGRID/399>
  - b. Complex DesKC:DesR-REC in phosphotransferase state, high Mg<sup>2+</sup>:  
<http://dx.doi.org/10.15785/SBGRID/401>
  - c. Complex DesKC:DesR-REC in phosphotransferase state, high Mg<sup>2+</sup> and BeF<sub>3</sub><sup>-</sup>:  
<http://dx.doi.org/10.15785/SBGRID/408>
  - d. Complex DesKC:DesR-REC in phosphatase state:  
<http://dx.doi.org/10.15785/SBGRID/400>

2. Produced atomic coordinate models:
  - a. Complex DesKC:DesR-REC in phosphotransferase state, low Mg<sup>2+</sup>:  
<http://www.rcsb.org/pdb/explore/explore.do?structureId=5IUJ>
  - b. Complex DesKC:DesR-REC in phosphotransferase state, high Mg<sup>2+</sup>:  
<http://www.rcsb.org/pdb/explore/explore.do?structureId=5IUK>
  - c. Complex DesKC:DesR-REC in phosphotransferase state, high Mg<sup>2+</sup> and BeF<sub>3</sub><sup>-</sup>:  
<http://www.rcsb.org/pdb/explore/explore.do?structureId=5IUL>
  - d. Complex DesKC:DesR-REC in phosphatase state:  
<http://www.rcsb.org/pdb/explore/explore.do?structureId=5IUN>
3. Computational crystallography software utilized:
  - a. autoPROC (<https://www.globalphasing.com/autoproc>)
  - b. BUSTER (<https://www.globalphasing.com/buster>)
  - c. CCP4 (<http://www.ccp4.ac.uk>)
  - d. Phaser (<http://www.phaser.cimr.cam.ac.uk>)
  - e. Coot (<https://www2.mrc-lmb.cam.ac.uk/personal/pemsley/cool>)
  - f. MolProbity (<http://molprobity.biochem.duke.edu>)
  - g. PyMol (<https://www.pymol.org>)

## Procedure

A. The use of DesKC mutants to stabilize the histidine-kinase either in its phosphatase or its phosphotransferase state

1. The plasmid pACYC-DesKC<sub>H188E</sub>:DesR<sub>REC</sub> encoding for the phosphomimetic DesKC variant and for the receiver domain of DesR (DesR<sub>REC</sub>), both fused to a His-tag and a TEV protease site to cleave the tag, was already available (Trajtenberg *et al.*, 2014). This plasmid pACYC-DesKC<sub>H188E</sub>:DesR<sub>REC</sub> is thus used to co-express the following two proteins:

- a. DesKC<sub>H188E</sub>:

MGSSHHHHHHGIHMENLYFQGRKERERLEEKLEDANERIAELVKLEERQRIARDLEDTL  
GQKLSLIGLKSDDLARKLIYKDPEQAARELKSQQTARTSLNEVRKIVSSMKGIRLKDDELINI  
KQILEAADIMFIYEEEEKWPENISLLNENILSMCLKEAVTNVVKHSQAKTCRVDIQQLWKEV  
VITVSDDGTFKGEENSFSKGGHLLGMRRERLEFANGSLHIDTENGTKLTMAIPNNSK

Theoretical MW = 27.3 kDa (24.9 after TEV-cleavage)

Theoretical absorbance (280 nm) of a 1 mg/ml solution after TEV-cleavage = 0.56

- b. DesR<sub>REC</sub>:

MRGSHHHHHHGGSGENLYFQGGSGSMISIFIAEDQQMLLGALGSLNLEDDMEVVGKGT  
GQDAVDFVKKRQPDVCIMDIEMPGKTGLEAAEELKDTGCKIIILTTFARPGYFQRAIKAGV  
KGYLLKDSPSEELANAIRSVMNGKRIYAPELMEDLYSEA

Theoretical MW = 17.4 kDa (15.2 after TEV-cleavage)

Theoretical absorbance (280 nm) of a 1 mg/ml solution after TEV-cleavage = 0.40

2. Within the sequences listed in the previous point, His-tags are highlighted with blue fonts, in green, the TEV-recognition sites (cleaved proteins start at the final Gly, including it). Underlined in red, the phosphorylation sites: DesR<sub>REC</sub> bears the wild-type Asp, while DesK<sub>H188E</sub> displays instead a Glu replacing the native His.
3. The phosphatase-stabilized variant of DesKC, DesK<sub>STAB</sub>, is insoluble when expressed by itself in *Escherichia coli*. This difficulty is solved by co-expressing DesK<sub>STAB</sub> with DesR<sub>REC</sub>, resulting in excellent yields of both proteins. A co-expression plasmid is generated (pACYC-DesK<sub>STAB</sub>:DesR<sub>REC</sub>), by sub-cloning DesK<sub>STAB</sub> from pHPKS/Pxyl-desK<sub>STA</sub> (Saita *et al.*, 2015) into pACYC-DesK<sub>H188E</sub>:DesR<sub>REC</sub> (Trajtenberg *et al.*, 2014) using restriction-free cloning (Unger *et al.*, 2010), using primers STAB\_F (5'-CCTGTATTTTCAGGGATCCGGTATTATAAACTTCGCAAG-3') and STAB\_R (5'-GTCAGACACTGTAATCACAACCTTCCTCCAG-3'). Both recombinant proteins encoded in pACYC-DesK<sub>STAB</sub>:DesR<sub>REC</sub> include a His-tag and a TEV protease cleavage site.

4. pACYC-DesK<sub>STAB</sub>:DesR<sub>REC</sub> co-expresses the following two proteins:

a. DesK<sub>STAB</sub>:

MGSSHHHHHGGSGENLYFQGSGLIKLRKEIERLEEKLEDANERIAELVKLEERQRIARDL  
HDTLGQKLSLIGLKSDLARKLIYKDPEQAARELKSVMQQTARTSLNEVRKIVSSMKGIRLKD  
ELINIKQILEAADIMFIYEEKWPENISLLNENILSMCLKEAVTNVVKHSQAKTCRVDIQQLW  
KEVVITVSDDGTFKGEENSFSKGHLLGMRRERLEFANGSLHIDTENGTKLTMAIPNNSK  
Theoretical MW = 27.8 kDa (25.6 after TEV-cleavage)

Theoretical absorbance (280 nm) of a 1 mg/ml solution after TEV-cleavage = 0.55

b. DesR<sub>REC</sub>:

MRGSHHHHHGGSGENLYFQGSGLSMISIFIAEDQQMLLGGALGSLNLEDDMEVVGKGT  
GQDAVDFVKKRQPDVCIMDIEMPGKTGLEAAEELKDTGCKIIILTFARPGYFQRAIKAGV  
KGYLLKDSPSEELANAIRSVMNGKRIYAPELMEDLYSEA

Theoretical MW = 17.4 kDa (15.2 after TEV-cleavage)

Theoretical absorbance (280 nm) of a 1 mg/ml solution after TEV-cleavage = 0.40

*Note: the theoretical absorbance (280 nm) of a 1 mg/ml solution of the DesKC:DesR protein complex is approximately 0.5, which corresponds to both protein sequences together.*

5. Within the sequences listed in the previous point, His-tags are highlighted with blue fonts, in green, the TEV-recognition sites (cleaved proteins start at the final Gly, including it). Underlined in orange, the three stabilizing substitutions within the coiled-coil motif of DesK's DHp domain. Underlined in red, the phosphorylation sites.

B. Over-expression of DesKC:DesR complexes

1. The co-expression plasmid pACYC-DesK<sub>STAB</sub>:DesR<sub>REC</sub> (and similarly for pACYC-DesK<sub>H188E</sub>:DesR<sub>REC</sub>), is transformed into 25 µl of competent *Escherichia coli* BL21 (DE3) cells (approximately 10<sup>8</sup> cells/ml) using heat shock for 2 min at 42 °C. A pQE80L plasmid including the DesR<sub>REC</sub> sequence (Trajtenberg *et al.*, 2014) is co-transformed to produce a stoichiometric

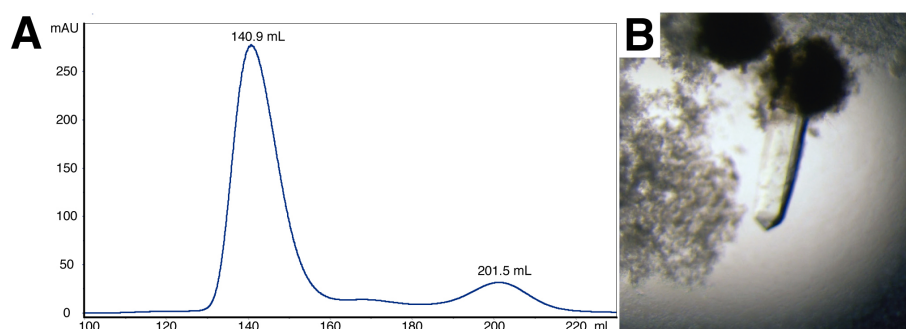


- excess of DesR<sub>REC</sub> in the cells. 100 µl of transformed cells are spread on LB agar plates containing 100 µg/ml ampicillin and 17 µg/ml chloramphenicol, and grown overnight at 37 °C.
2. Between 5 and 10 single colonies are picked and inoculated in 3 ml LB culture media (to be used as pre-cultures in the next step), 100 µg/ml ampicillin and 17 µg/ml chloramphenicol, and further grown at 37 °C for 16 h with agitation (220 rpm).
  3. Pre-cultures are inoculated 1/500 in 250 ml Erlenmeyer flasks containing 50 ml LB media, 100 µg/ml ampicillin and 17 µg/ml chloramphenicol, and further grown at 37 °C for 16 h with agitation (220 rpm).
  4. Larger-scale cultures are launched using three 5 L Erlenmeyer flasks, each containing 1 L 2x YT culture media, 2 mM magnesium sulfate, 100 µg/ml ampicillin, 17 µg/ml chloramphenicol and a 1/100 inoculum of pre-cultured bacteria. Cultures are grown at 37 °C with agitation (220 rpm) until absorbance at wavelength 660 nm (Abs<sub>660 nm</sub>) reaches 0.7-1 (approximately 3 h). Cultures are quickly shifted to a shaker that has been pre-equilibrated at 20 °C, and further growth is continued for 30 min with agitation (220 rpm).
  5. IPTG is added (0.5 mM final concentration) into the cultures. Induction of over-expression is achieved at 30 °C for 4 h (in the case of DesKC<sub>STAB</sub>:DesR<sub>REC</sub>) or at 20 °C for 16 h (for DesKC<sub>H188E</sub>:DesR<sub>REC</sub>), with agitation (220 rpm) in both cases.
  6. Cells are harvested by centrifugation at 4,600 x g for 20 min at 4 °C in 1 L polypropylene bottles.
  7. Pellets are thoroughly resuspended in lysis buffer (see Recipes) (5 ml per g wet weight pellet) in 50 ml Falcon tubes.
  8. Lysozyme (0.5 mg/ml final concentration) and Triton X-100 (1% vol/vol final concentration) are added to resuspended pellets, and incubated at room temperature for 30 min, until the extract is viscous due to DNA release. Extracts are then transferred to -80 °C and stored for at least 2 h.
  9. Frozen extracts are thawed in a water bath at 37 °C. Thawed extracts are sonicated with pulses of 1 sec (set to 30% amplitude) and resting intervals of 3 sec, completing a total timespan of 4 min. This operation is repeated 3-4 times, until complete reduction of viscosity. During sonication the Falcon tube is kept refrigerated with ice. This is considered the total extract, and 40 µl are stored in electrophoresis sample buffer with β-mercaptoethanol (SBβ) for later SDS-PAGE analyses.
  10. Total extracts are centrifuged at 12,000 x g and 4 °C for 45 min. This step separates soluble species (supernatant fraction) from insoluble ones (pellet) such as inclusion bodies, non-lysed cells, insoluble proteins, etc. The supernatants are filtered through a 0.45 µm syringe filter to a new Falcon tube, and imidazole added to 40 mM final concentration (to avoid nonspecific binding to the column during IMAC). 40 µl of supernatants are stored in SBβ for SDS-PAGE analysis. Supernatants are hereafter used as the source of soluble DesKC<sub>STAB</sub> (or DesKC<sub>H188E</sub>) and DesR<sub>REC</sub>, for structural studies.

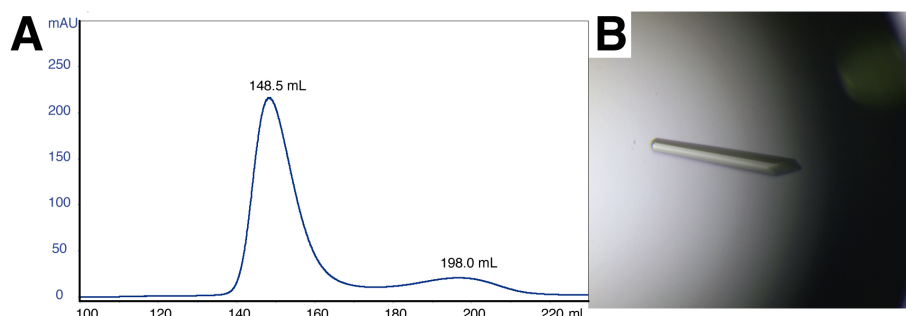
### C. Purification of DesKC:DesR complexes

1. Zinc is used as the immobilized metal, during the first purification step by IMAC. Nickel is avoided to preclude cysteine oxidation, which previously hampered crystallization due to resulting heterogeneity in DesR samples. The IMAC column is connected to the ÄKTA purifier and pre-equilibrated with binding buffer (see Recipes) (10 column volumes or CV). Samples are injected at a flow rate of 5 ml/min, and target proteins are bound to the column through their N-terminal His-tags.
2. IMAC washing is achieved with 15-20 CV binding buffer, until a stable Abs<sub>280</sub> baseline is obtained. Aliquots of the flow-through material are stored in SB $\beta$  for SDS-PAGE analysis, to monitor for potential column saturation.
3. IMAC elution is achieved with a linear 0-100% gradient of elution buffer (see Recipes) (30 CV), at 5 ml/min. Absorbance at wavelength 280 nm is used to monitor protein elution peaks. DesKC<sub>STAB</sub>, DesKC<sub>H188E</sub> and DesR<sub>REC</sub> typically elute at approximately 65 mM imidazole and are collected in 96-deep-well plates. 40  $\mu$ l of eluted peaks are stored in SB $\beta$  for SDS-PAGE analysis.
4. The elution peaks of selected proteins are pooled and incubated with TEV protease (1:40 w/w TEV/target ratio). Proteolysis is performed overnight, in dialysis bags. Dialyses are performed against 200-300 volumes of dialysis buffer (see Recipes) with gentle stirring.
5. Samples are recovered from the dialysis bag, and filtered with 0.45  $\mu$ m syringe filters. A second IMAC zinc column is used, attached to a peristaltic pump and pre-equilibrated with binding buffer (10 CV). Samples are injected into the column at a flow rate of 5 ml/min. The flow-through is now carefully collected. The TEV protease itself includes an N-terminal His-tag, hence typically excluded from the flow-through. 20 CV of elution buffer is applied to the column to elute TEV (and potentially non-digested target protein, normally absent if the procedure worked correctly) to be monitored by SDS-PAGE.
6. The second IMAC flow-through sample is concentrated by ultra-filtration in Vivaspin centrifuge devices at 6,300 x g and 15 °C for 20 min to a final volume of 10 ml. This is immediately filtered through a 0.22  $\mu$ m syringe filter, and injected into a size exclusion chromatography (SEC) column Superdex S75 26/600, at a flow rate of 1 ml/min. The SEC column is previously equilibrated with 2 CV SEC buffer (see Recipes).
7. The SEC is eluted isocratically at 1 ml/min with SEC-P buffer in the case of the DesKC<sub>STAB</sub>:DesR<sub>REC</sub> (phosphatase) complex, or with SEC-PT buffer in the case of the DesKC<sub>H188E</sub>:DesR<sub>REC</sub> (phosphotransferase) complex. Eluted fractions are collected in 96-deep-well plates. Protein elution is monitored with 280 nm wavelength absorbance (Figures 1A and 2A). 40  $\mu$ l of eluted peaks are stored in SB $\beta$  for SDS-PAGE analysis.  
The calculated molecular weight (MW) of the complex is approximately 65 kDa taking into account that DesKC is a homo-dimer, and that one monomer of DesR<sub>REC</sub> could be binding to DesKC. If instead the DesKC:DesR<sub>REC</sub> ratio is 2:2, the MW is anticipated to increase to ~80 kDa. According to the calibration curves, the SEC chromatograms reveal a MW of 53.5 kDa in the case of DesKC<sub>STAB</sub>:DesR<sub>REC</sub>, and 44.9 kDa for DesKC<sub>H188E</sub>:DesR<sub>REC</sub>. The difference with the

theoretical MW figures is likely due to tertiary and quaternary structure features deviating from the ideal assumptions for globular species and their hydrodynamic radii. That these SEC peaks correspond indeed to the targeted DesKC:DesR complexes is afterwards confirmed by mass spectrometry analyses and then 3D structure determination. The final yields approximated 12 mg protein per L of cell culture (or 1-2 mg protein per g of wet weight pellet), for both complexes.



**Figure 1. Size-exclusion chromatography and crystallization of the DesKC<sub>STAB</sub>:DesR<sub>REC</sub> complex.** A. Elution profile of the DesKC<sub>STAB</sub>:DesR<sub>REC</sub> protein complex in a Superdex S75 pg 26/600 size exclusion chromatography column. The peak at 140.9 ml corresponds to the complex, according to SDS-PAGE analysis. The peak at 201.5 ml corresponds to monomeric DesR<sub>REC</sub> in excess. B. Trigonal crystal of the DesKC<sub>STAB</sub>:DesR<sub>REC</sub> complex.



**Figure 2. Size-exclusion chromatography and crystallization of the DesKC<sub>H188E</sub>:DesR<sub>REC</sub> complex.** A. Elution profile of the DesKC<sub>H188E</sub>:DesR<sub>REC</sub> protein complex in a Superdex S75 pg 26/600 size exclusion chromatography column. The peak at 148.5 ml corresponds to the complex, according to SDS-PAGE analysis. The peak at 198.0 ml corresponds to monomeric DesR<sub>REC</sub> in excess. B. Monoclinic crystal of the DesKC<sub>H188E</sub>:DesR<sub>REC</sub> complex.

Selected elution peaks from SEC are pooled and concentrated with Vivaspin centrifuge devices at 6,300 x g and 15 °C for 20 min. Final concentrations of 16 mg/ml for the DesKC<sub>STAB</sub>:DesR<sub>REC</sub> complex, and 19 mg/ml for the DesKC<sub>H188E</sub>:DesR<sub>REC</sub> complex, are typically achieved. Protein concentration is determined by UV spectrophotometry at 280 nm and calculated extinction coefficients are derived from ProtParam (ExpASY, SIB Bioinformatics Resource Portal: <http://www.expasy.org/tools>). Proteins are stored in 25, 50 and 100 µl aliquots at -80 °C.

8. Prior to crystallization, the purity and integrity of samples are checked by SDS-PAGE. Samples in SB $\beta$  are heated at 100 °C for 5 min and separated by electrophoresis in 12% polyacrylamide gels ran at 200 V.

#### D. Crystallization of DesKC:DesR complexes

##### 1. DI: The DesKC<sub>STAB</sub>:DesR<sub>REC</sub> (phosphatase) complex

- a. The protein stock solution of pure DesKC<sub>STAB</sub>:DesR<sub>REC</sub> complex is prepared according to a recipe where the order in the addition of the reagents is critical. First MIX<sub>A</sub> is obtained by combining 7.6  $\mu$ l 100 mM AMP-PCP, 3.8  $\mu$ l 1 M Tris pH 8.5 and 44.6  $\mu$ l buffer SEC-P. Then 95  $\mu$ l of DesKC<sub>STAB</sub>:DesR<sub>REC</sub> complex (at ~16 mg/ml in buffer SEC-P) is added to the 56  $\mu$ l of MIX<sub>A</sub>. The tube is centrifuged at 16,000  $\times$  g and 4 °C for 10 min and the supernatant used for further manipulations. In this manner ~150  $\mu$ l of DesKC<sub>STAB</sub>:DesR<sub>REC</sub> complex stock solution (at ~10 mg/ml final concentration) is obtained, containing approximately 5 mM AMP-PCP, 43.7 mM Tris pH 8.5, 462.2 mM NaCl and 9.25 mM MgCl<sub>2</sub>.
- b. Microseeding is used to speed up the process of crystallogenesis: 2  $\mu$ l are drawn from drops containing previously grown crystals, and these are crushed by vigorous pipetting with P2 micropipette tips. This is used as the source of microseeds, adding 50  $\mu$ l of 30% (v/v) PEG 600, 0.1 M MES pH 6, 0.15 M MgSO<sub>4</sub> and 5% (v/v) glycerol. This seed stock solution is diluted 1/400 into an additive solution previously prepared containing 27% (v/v) PEG 600, 0.1 M MES pH 6, 0.15 M MgSO<sub>4</sub> and 5% (v/v) glycerol.
- c. Hanging drop crystallizations are done at 20 °C in Linbro plates. The crystallization drops contain 0.8  $\mu$ l of mother liquor (30% [w/v] PEG 4000, 0.1 M Tris-HCl pH 8.5, 0.2 M Li<sub>2</sub>SO<sub>4</sub>), 2  $\mu$ l of stock protein solution, and 1.2  $\mu$ l of additive solution with seeds. Three drops are set on a cover slide to seal each reservoir well. Crystals typically appear in 3-4 days, growing to suitable sizes (0.5  $\mu$ m) in 10 days (Figure 1B).
- d. Crystals are cryo-protected by slowly adding 4  $\mu$ l of cryo-protection solution: 32% (w/v) PEG 4000, 0.1 M Tris-HCl pH 8, 0.2 M Li<sub>2</sub>SO<sub>4</sub>, 20 mM MgCl<sub>2</sub>, 18 mM BeF<sub>3</sub><sup>-</sup>, 5 mM AMP-PCP and 15% glycerol. BeF<sub>3</sub><sup>-</sup> is prepared by mixing 50  $\mu$ l of a 0.9 M stock solution of NaF with 9  $\mu$ l of a 1 M stock solution of BeCl<sub>2</sub>, rendering a stock solution of 152 mM BeF<sub>3</sub><sup>-</sup>. Be is extremely toxic; all solutions containing it are handled with particular caution and wastes treated appropriately, according to safety rules. Finally, crystals are briefly soaked in 100% cryoprotection solution, fished out of the drops using cryo-loops of approximately the same size as the selected specimen, flash-frozen in liquid nitrogen and stored in cryo-vials under liquid nitrogen for further use.

##### 2. DII: The DesKC<sub>H188E</sub>:DesR<sub>REC</sub> (phosphotransferase) complex

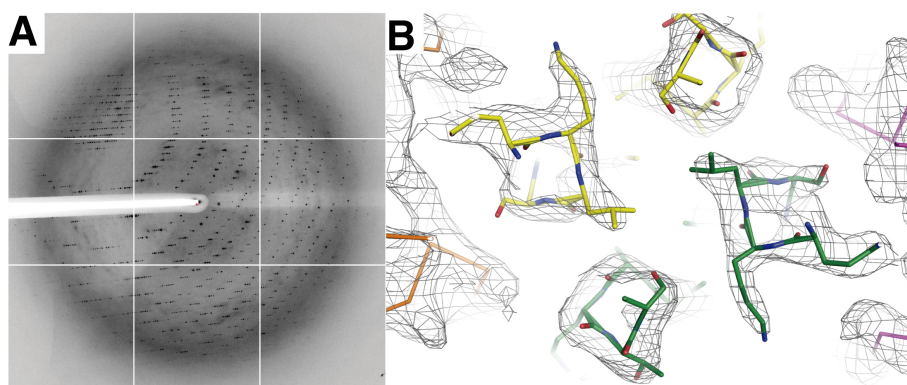
- a. The protein stock solution of pure DesKC<sub>H188E</sub>:DesR<sub>REC</sub> complex is prepared according to a recipe where the order in the addition of the reagents is critical. First MIX<sub>A</sub> is obtained by combining 5.5  $\mu$ l 100 mM AMP-PCP, 2.75  $\mu$ l 1 M Tris pH 8.5, 2.2  $\mu$ l 1 M MgCl<sub>2</sub> and 43.35  $\mu$ l buffer SEC-PT. Then 48  $\mu$ l of DesKC<sub>H188E</sub>:DesR<sub>REC</sub> complex (at ~19 mg/ml in buffer SEC-

PT) are added to 8.2  $\mu$ l DesR<sub>REC</sub> (at 30 mg/ml in buffer SEC-PT) and the 53.8  $\mu$ l of MIX<sub>A</sub>. The tube is centrifuged at 16,000  $\times$  g and 4 °C for 10 min and the supernatant used for further manipulations. In this manner ~110  $\mu$ l of DesK<sub>CH188E</sub>:DesR<sub>REC</sub> complex stock solution (at ~8.3 mg/ml final concentration) is obtained, containing approximately 5 mM AMP-PCP, 43.1 mM Tris pH 8-8.5, 271.5 mM NaCl and 20 mM MgCl<sub>2</sub>.

- b. Hanging drop crystallizations are done at 20 °C in Linbro plates. The crystallization drops contain 2  $\mu$ l of mother liquor (18% PEG 3350, 0.3 M tri-potassium citrate) and 2  $\mu$ l of stock protein solution. Two drops are set on a cover slide to seal each reservoir well. Crystals appear typically in 5-6 days, growing to suitable sizes (0.5  $\mu$ m) in 15 days (Figure 2B).
- c. Crystals are cryo-protected by quick soaking in 20% PEG 3350, 0.3 M tri-potassium citrate, 5 mM AMP-PCP, 25% glycerol, 20 or 150 mM MgCl<sub>2</sub>, and 0 or 5 mM BeF<sub>3</sub><sup>-</sup>. Crystals are fished out of the drops using cryo-loops of approximately the same size as the selected specimen, flash-frozen in liquid nitrogen, and stored in cryo-vials under liquid nitrogen for further use.

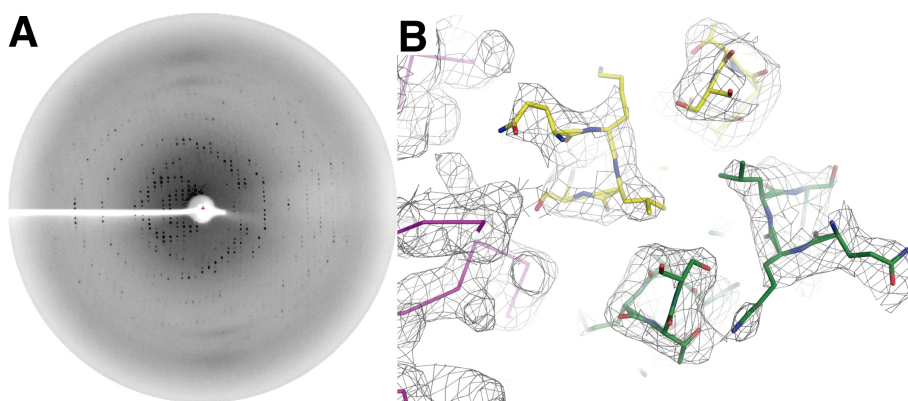
#### E. X-ray diffraction data collection.

1. Single crystal X-ray diffraction experiments are carried out with an in-house copper rotating-anode source (Protein Crystallography Facility, Institut Pasteur Montevideo), or with synchrotron radiation (Soleil, France).
  - a. DesK<sub>STAB</sub> in complex with DesR<sub>REC</sub> (PDB Id **5IUN**), crystallizes in the trigonal space group P3<sub>1</sub>21. Crystals are measured in the synchrotron (Beamline Proxima I, Soleil, France), collecting 180 images with 1° oscillation range and 30 sec exposure time per image (Figure 3A). The raw data is deposited in the SBCGrid Data Bank (DOI: [10.15785/SBGRID/400](https://doi.org/10.15785/SBGRID/400)).



**Figure 3. X-ray diffraction of DesK<sub>STAB</sub>:DesR<sub>REC</sub> crystals and resulting electron density map.** A. Representative frame showing the X-ray diffraction from a single DesK<sub>STAB</sub>:DesR<sub>REC</sub> crystal (space group P3<sub>1</sub>21). B. Zoom-in on the mid-sector of the DHp domain of the DesK<sub>STAB</sub>:DesR<sub>REC</sub> (phosphatase) complex, illustrated in stick representation (all atoms for the kinase, and only the C $\alpha$  trace for the regulator). Oxygen atoms are colored red, nitrogens in blue, and carbons distinguished according to protein and chain: green and yellow, for the two chains in the DesK<sub>STAB</sub> dimer, and orange and magenta for the two bound DesR<sub>REC</sub> moieties.

- b. DesK<sub>H188E</sub> in complex with DesR<sub>REC</sub> with high Mg<sup>2+</sup> and BeF<sub>3</sub><sup>-</sup> (PDB Id **5IUL**), is collected in a rotating anode X-ray generator (Protein Crystallography Facility, Institut Pasteur de Montevideo, Uruguay). 593 images are collected with 0.3° oscillation range and 10 min exposure per image (Figure 4A). The raw data is deposited in the SBGrid Data Bank (DOI: [10.15785/SBGRID/408](https://doi.org/10.15785/SBGRID/408)).



**Figure 4. X-ray diffraction of DesK<sub>H188E</sub>:DesR<sub>REC</sub> crystals and resulting electron density map.** A. Representative frame showing the X-ray diffraction from a single DesK<sub>H188E</sub>:DesR<sub>REC</sub> crystal (space group P2<sub>1</sub>). B. Zoom-in on the mid-sector of the DHp domain of the DesK<sub>H188E</sub>:DesR<sub>REC</sub> (phosphotransferase) complex, illustrated in stick representation (all atoms for the kinase, and only the Ca trace for the regulator). Oxygen atoms are colored red, nitrogens in blue, and carbons distinguished according to protein and chain: green and yellow, for the two chains in the DesK<sub>H188E</sub> dimer, and magenta for the single asymmetrically bound DesR<sub>REC</sub> molecule.

DesK<sub>H188E</sub> in complex with DesR<sub>REC</sub> with high Mg<sup>2+</sup> (PDB Id **5IUK**), crystallizes in the monoclinic space group P2<sub>1</sub>. Crystals are measured in the synchrotron (Beamline Proxima I, Soleil, France), collecting two different sets of 1000 frames each. The oscillation range is 0.2° and exposure time is 0.2 sec per image. The raw data is deposited in the SBGrid Data Bank (DOI: [10.15785/SBGRID/401](https://doi.org/10.15785/SBGRID/401)).

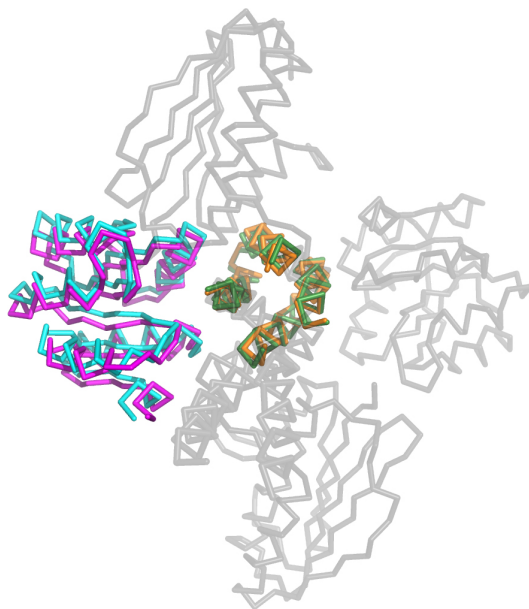
- c. DesK<sub>H188E</sub> in complex with DesR<sub>REC</sub> with low Mg<sup>2+</sup> (PDB Id **5IUJ**), crystallizes in the monoclinic space group P2<sub>1</sub>. Crystals are measured in the synchrotron (Beamline Proxima II, Soleil, France), collecting 110 images with 1° oscillation range and 30 sec exposure per image. The raw data is deposited in the SBGrid Data Bank (DOI: [10.15785/SBGRID/399](https://doi.org/10.15785/SBGRID/399)).

### Data analysis

- A. Data sets are processed using the automatic pipeline autoPROC (Vonrhein *et al.*, 2011), which uses XDS (Kabsch, 2010) for indexing/integration, and Pointless/Aimless (Evans, 2006; Evans, 2011) for data reduction and scaling, with the following comments for each case:

1. DesKC<sub>STAB</sub> in complex with DesR<sub>REC</sub> (PDB Id **5IUN**): the best processing statistics are achieved by integrating all images.
  2. DesKC<sub>H188E</sub> in complex with DesR<sub>REC</sub> with high Mg<sup>2+</sup> (PDB Id **5IUK**): the best processing strategy is to integrate and scale the first 800 frames from the first data set, merging it with frames 1-530 and 650-910 from the second set.
  3. DesKC<sub>H188E</sub> in complex with DesR<sub>REC</sub> with high Mg<sup>2+</sup> and BeF<sub>3</sub><sup>-</sup> (PDB Id **5IUL**): all images are eventually integrated, but successful indexing is achieved by selecting frames 10-40 and 200-240 and using the 1,000 strongest reflections.
  4. DesKC<sub>H188E</sub> in complex with DesR<sub>REC</sub> with low Mg<sup>2+</sup> (PDB Id **5IUJ**): the best processing statistics are achieved by integrating all images.
- B. To solve the structure of DesKC<sub>STAB</sub> in complex with DesR<sub>REC</sub> (Figure 3B), molecular replacement is used, as previously reported (Trajtenberg *et al.*, 2016). The search probe is a model of a DesKC:DesR<sub>REC</sub> complex generated *in silico* (Trajtenberg *et al.*, 2014) by superposition of a distantly related complex from *Thermothoga maritima* (PDB Id 3DGE) (Casino *et al.*, 2009), and partial truncation of DesKC's DHP domain, only keeping the invariant region (residues 190-230). It must be highlighted that the *in silico* modeling strategy produces hundreds of models (Trajtenberg *et al.*, 2014). Molecular replacement is performed using Phaser (McCoy *et al.*, 2007), searching for one copy of the *in silico*-generated DHP-DesR<sub>REC</sub> model of the complex, and repeating this automatically with hundreds of different initial candidates as search probes. Eventually only a handful of them are good to be placed in the asymmetric unit, giving clear signals in the rotation and the translation functions calculated with default settings. Starting with the first refinement cycles, the remaining domains and a second hemi-complex are clearly visible in the electron density maps, allowing for manual model building of the whole molecules using Coot (Emsley *et al.*, 2010). The strategy of using *in silico*-generated DHP-DesR<sub>REC</sub> models as search probes is critical for molecular replacement to succeed, and the final refined model proves indeed that the selected probes were similar enough to allow for molecular replacement to succeed, providing with solutions within the radius of convergence for refinement procedures (Figure 5). Using instead crystallographic models of individual partners or domains instead is ineffective, likely due to insufficient scattering mass of small search probes and/or conformational differences between isolated vs. complexed proteins. The structures corresponding to the phosphotransferase complex are also solved by molecular replacement with Phaser as before, using the DHP-DesR<sub>REC</sub> model as search probe, and then completing as described above, guided by the electron density maps. Once more, we refer the reader to our previous report for full details of crystallographic structure determination procedures (Trajtenberg *et al.*, 2016).
1. Structure refinement is performed with Buster-TNT (Bricogne *et al.*, 2009) using standard procedures, including non-crystallographic symmetry (NCS) restraints and Translation/Libration/Screw (TLS) descriptions in each model (documented in detail within the header of each atomic coordinates file available in the PDB).

- Structures are validated throughout the refinement and towards the end, using MolProbity tools (Chen *et al.*, 2010).



**Figure 5. Structural superposition of the initial model of DesK:DesR used as Molecular Replacement probe and the final refined structure.** Superposition of the Ca traces of the *in silico*-generated model of DesK<sub>DHP</sub>:DesR<sub>REC</sub> (orange:cyan) (Trajtenberg *et al.*, 2014), onto the final refined crystal structure of DesK<sub>STAB</sub>:DesR<sub>REC</sub> (green:magenta). The entire proteins for the latter are observed in the crystal structure and could thus be manually built (indicated in grey). Of note, among the hundreds of *in silico*-generated models to be used for molecular replacement procedures, the few that proved useful in solving the structure, are close enough to the final structure as readily seen in this illustration, explaining their utility. Nonetheless, the actual experimental structure displays substantial changes, readily detectable in this view mostly along the DesR<sub>REC</sub> domains.

## Recipes

- LB medium
  - 5 g/L NaCl
  - 5 g/L yeast extract
  - 15 g/L tryptone plus
- 2x YT culture medium
  - 5 g/L NaCl
  - 10 g/L yeast extract
  - 16 g/L tryptone plus



3. LB agar plates  
300 ml LB medium  
4.5 g agar
4. Lysis buffer  
50 mM Tris-HCl pH 8  
500 mM NaCl  
EDTA-free cocktail of protease inhibitors
5. Immobilized Metal Affinity Chromatography (IMAC) binding and washing buffer  
50 mM Tris-HCl pH 8  
500 mM NaCl  
40 mM imidazole  
10% glycerol
6. IMAC elution buffer  
50 mM Tris-HCl pH 8  
500 mM NaCl  
500 mM imidazole  
10% glycerol
7. Dialysis buffer  
50 mM Tris-HCl pH 8  
300 mM NaCl  
0.5 mM dithiothreitol
8. Size Exclusion Chromatography buffer for the phosphatase complex (SEC-P buffer)  
20 mM Tris-HCl pH 8  
500 mM NaCl  
10 mM MgCl<sub>2</sub>
9. Size Exclusion Chromatography buffer for the phosphotransferase complex (SEC-PT buffer)  
20 mM Tris-HCl pH 8  
300 mM NaCl

### **Acknowledgments**

These protocols are adapted from previous work reported by our group (Trajtenberg *et al.*, 2016). We are grateful to the staffs at synchrotron beamlines Proxima I and II, Soleil (France), especially William Shepard; and Daniela Albanesi for providing plasmid pHPKS/Pxyl-desK<sub>STA</sub>. This work was supported by grants from Agencia Nacional de Investigación e Innovación (ANII), Uruguay (FCE2009\_1\_2679;FCE2007\_219); Agence Nationale de la Recherche (ANR), France (PCV06\_138918); Centro de Biología Estructural del Mercosur ([www.cebem-lat.org](http://www.cebem-lat.org)) and Fondo para la Convergencia Estructural del MERCOSUR (COF 03/11). We are also grateful to the Institut Pasteur International Network for institutional support through the IMiZA International Joint Unit.

## References

1. Albanesi, D., Mansilla, M. C. and de Mendoza, D. (2004). [The membrane fluidity sensor DesK of \*Bacillus subtilis\* controls the signal decay of its cognate response regulator](#). *J Bacteriol* 186(9): 2655-2663.
2. Albanesi, D., Martin, M., Trajtenberg, F., Mansilla, M. C., Haouz, A., Alzari, P. M., de Mendoza, D. and Buschiazzi, A. (2009). [Structural plasticity and catalysis regulation of a thermosensor histidine kinase](#). *Proc Natl Acad Sci U S A* 106(38): 16185-16190.
3. Bricogne, G., Blanc, E., Brandl, M., Flensburg, C., Keller, P., Paciorek, W., Roversi, P., Sharff, A., Smart, O. S., Vonrhein, C. and Womack, T. O. (2009). [BUSTER version 2.8.0](#). *Global Phasing*.
4. Casino, P., Rubio, V. and Marina, A. (2009). [Structural insight into partner specificity and phosphoryl transfer in two-component signal transduction](#). *Cell* 139(2): 325-336.
5. Chen, V. B., Arendall, W. B., 3rd, Headd, J. J., Keedy, D. A., Immormino, R. M., Kapral, G. J., Murray, L. W., Richardson, J. S. and Richardson, D. C. (2010). [MolProbity: all-atom structure validation for macromolecular crystallography](#). *Acta Crystallogr D Biol Crystallogr* 66(Pt 1): 12-21.
6. de Mendoza, D. (2014). [Temperature sensing by membranes](#). *Annu Rev Microbiol* 68: 101-116.
7. Emsley, P., Lohkamp, B., Scott, W. G. and Cowtan, K. (2010). [Features and development of \*Coot\*](#). *Acta Crystallogr D Biol Crystallogr* 66(Pt 4): 486-501.
8. Evans, P. (2006). [Scaling and assessment of data quality](#). *Acta Crystallogr D Biol Crystallogr* 62(Pt 1): 72-82.
9. Evans, P. R. (2011). [An introduction to data reduction: space-group determination, scaling and intensity statistics](#). *Acta Crystallogr D Biol Crystallogr* 67(Pt 4): 282-292.
10. Gao, R. and Stock, A. M. (2009). [Biological insights from structures of two-component proteins](#). *Annu Rev Microbiol* 63: 133-154.
11. Kabsch, W. (2010). [Xds](#). *Acta Crystallogr D Biol Crystallogr* 66(Pt 2): 125-132.
12. McCoy, A. J., Grosse-Kunstleve, R. W., Adams, P. D., Winn, M. D., Storoni, L. C. and Read, R. J. (2007). [Phaser crystallographic software](#). *J Appl Crystallogr* 40(Pt 4): 658-674.
13. Saita, E., Abriata, L. A., Tsai, Y. T., Trajtenberg, F., Lemmin, T., Buschiazzi, A., Dal Peraro, M., de Mendoza, D. and Albanesi, D. (2015). [A coiled coil switch mediates cold sensing by the thermosensory protein DesK](#). *Mol Microbiol* 98(2): 258-271.
14. Trajtenberg, F., Albanesi, D., Ruetalo, N., Botti, H., Mechaly, A. E., Nieves, M., Aguilar, P. S., Cybulski, L., Larrieux, N., de Mendoza, D. and Buschiazzi, A. (2014). [Allosteric activation of bacterial response regulators: the role of the cognate histidine kinase beyond phosphorylation](#). *MBio* 5(6): e02105.
15. Trajtenberg, F., Imelio, J. A., Machado, M. R., Larrieux, N., Marti, M. A., Obal, G., Mechaly, A. E. and Buschiazzi, A. (2016). [Regulation of signaling directionality revealed by 3D snapshots of a kinase:regulator complex in action](#). *Elife* 5.

16. Unger, T., Jacobovitch, Y., Dantes, A., Bernheim, R. and Peleg, Y. (2010). [Applications of the Restriction Free \(RF\) cloning procedure for molecular manipulations and protein expression.](#) *J Struct Biol* 172(1): 34-44.
17. Vonrhein, C., Flensburg, C., Keller, P., Sharff, A., Smart, O., Paciorek, W., Womack, T. and Bricogne, G. (2011). [Data processing and analysis with the autoPROC toolbox.](#) *Acta Crystallogr D Biol Crystallogr* 67(Pt 4): 293-302.