



**HAL**  
open science

## Deficient LRRC8A-dependent volume-regulated anion channel activity is associated with male infertility in mice

Jianqiang Bao, Carlos Perez, Jeusun Kim, Huan Zhang, Caitlin Murphy, Tewfik Hamidi, Jean Jaubert, Craig Platt, Janet Chou, Meichun Deng, et al.

### ► To cite this version:

Jianqiang Bao, Carlos Perez, Jeusun Kim, Huan Zhang, Caitlin Murphy, et al.. Deficient LRRC8A-dependent volume-regulated anion channel activity is associated with male infertility in mice. *JCI Insight*, 2018, 3 (16), pp.e99767. 10.1172/jci.insight.99767 . pasteur-02868953

**HAL Id: pasteur-02868953**

**<https://pasteur.hal.science/pasteur-02868953>**

Submitted on 4 Sep 2020

**HAL** is a multi-disciplinary open access archive for the deposit and dissemination of scientific research documents, whether they are published or not. The documents may come from teaching and research institutions in France or abroad, or from public or private research centers.

L'archive ouverte pluridisciplinaire **HAL**, est destinée au dépôt et à la diffusion de documents scientifiques de niveau recherche, publiés ou non, émanant des établissements d'enseignement et de recherche français ou étrangers, des laboratoires publics ou privés.

**Deficient LRRC8A-dependent Volume-Regulated Anion Channel (VRAC) activity is associated with male infertility in mice**

Jianqiang Bao<sup>1</sup>, Carlos J. Perez<sup>1</sup>, Jeesun Kim<sup>1</sup>, Huan Zhang<sup>2</sup>, Caitlin J. Murphy<sup>3</sup>, Tewfik Hamidi<sup>1</sup>, Jean Jaubert<sup>4</sup>, Craig D. Platt<sup>5</sup>, Janet Chou<sup>5</sup>, Meichun Deng<sup>6</sup>, Meng-Hua Zhou<sup>6</sup>, Yuying Huang<sup>6</sup>, Héctor Gaitán-Peñas<sup>7,8</sup>, Jean-Louis Guénet<sup>4</sup>, Kevin Lin<sup>1</sup>, Yue Lu<sup>1</sup>, Taiping Chen<sup>1,9</sup>, Mark T. Bedford<sup>1,9</sup>, Sharon Y.R. Dent<sup>1,9</sup>, John H Richburg<sup>3</sup>, Raúl Estévez<sup>7,8</sup>, Hui-Lin Pan<sup>6</sup>, Raif S. Geha<sup>5</sup>, Qinghua Shi<sup>2</sup>, Fernando Benavides<sup>1,9</sup>

<sup>1</sup>Department of Epigenetics and Molecular Carcinogenesis, The University of Texas MD Anderson Cancer Center, Smithville, Texas, USA.

<sup>2</sup>School of Life Science, University of Science and Technology of China, Hefei, China.

<sup>3</sup>The University of Texas at Austin, College of Pharmacy, Austin, USA.

<sup>4</sup>Unité de Génétique de la Souris, Institut Pasteur, Paris, France.

<sup>5</sup>Division of Immunology, Boston Children's Hospital, Boston, Massachusetts, USA.

<sup>6</sup>Center for Neuroscience and Pain Research, Department of Anesthesiology and Perioperative Medicine, The University of Texas MD Anderson Cancer Center, Houston, TX 77030, USA.

<sup>7</sup>Unitat de Fisiologia, Departament de Ciències Fisiològiques, IDIBELL-Institute of Neurosciences, Universitat de Barcelona, L'Hospitalet de Llobregat, Spain.

<sup>8</sup>U-750, CIBERER, ISCIII, Barcelona, Spain.

<sup>9</sup>UT Health Graduate School of Biomedical Sciences, Houston, Texas, USA.

**Running Head:** LRRC8A is indispensable for male fertility

**Address correspondence to:** Fernando Benavides or Jianqiang Bao, The University of Texas, M. D. Anderson Cancer Center, Department of Epigenetics and Molecular Carcinogenesis, 1808 Park Road 1C, P.O. Box 389, Smithville, Texas 78957, USA. Phone: 512.237.9343 (FB) or 512.237.6613 (JB); E-Mail: fbenavid@mdanderson.org or JBao2@mdanderson.org.

## Abstract

Ion channel-controlled cell volume regulation is of fundamental significance to the physiological function of sperm. In addition to volume regulation, LRRC8A-dependent Volume-Regulated Anion Channel (VRAC) activity is involved in cell cycle progression, insulin signaling, and cisplatin resistance. Nevertheless, the contribution of LRRC8A and its dependent VRAC activity in the germ cell lineage remain unknown. By utilizing a spontaneous *Lrrc8a* mouse mutation (c.1325delTG, p.F443\*) and genetically-engineered mouse models, we demonstrate that LRRC8A-dependent VRAC activity is essential for male germ cell development and fertility. *Lrrc8a*-null male germ cells undergo progressive degeneration independent of the apoptotic pathway during postnatal testicular development. *Lrrc8a*-deficient mouse sperm exhibit Multiple Morphological Abnormalities of the Flagella (MMAF), a feature commonly observed in the sperm of infertile human patients. Importantly, we identified a human patient with a rare *LRRC8A* hypomorphic mutation (c.1634G>A, p.Arg545His) possibly linked to Sertoli-cell only syndrome (SCOS), a male sterility disorder characterized by the loss of germ cells. Thus, LRRC8A is a critical factor required for germ cell development and volume regulation in the mouse, and might serve as a novel diagnostic and therapeutic target for SCOS patients.

## Introduction

The cells of the body are frequently exposed to the stress of hyper- and hypo-tonic microenvironments. Thus, cell volume regulation is of fundamental importance for the physiological function and metabolic homeostasis for almost every vertebrate cell. Vertebrate cells have evolved multiple types of both tissue-specific and ubiquitous plasma membrane channels that counteract cell swelling by decreasing cell volume through regulatory volume decrease (RVD), and cope with shrinking by increasing volume through regulatory volume increase (RVI) (1). Among those volume regulating channels are the dedicated water channels of aquaporin family proteins (Aqp0~12), specific ion channels ( $K^+$ ,  $Na^+$ ,  $Cl^-$ ) and specialized organic solute transporters (1, 2). The transport of inorganic ions and small organic osmolytes, such as taurine and amino acids, out of the cells is accompanied by efflux of water either through passive diffusion across the cell membrane, or through the more efficient aquaporin channel proteins, leading to the recovery of the cell volume and size (1, 3). RVD is achieved primarily through chloride channels, i.e.,  $Cl^-$  current, which is often gated by the Volume-Regulated Anion Channel (VRAC) that can sense cell swelling or ionic strength (4-7).

Being able to regulate cell volume in changing osmotic conditions is critically important for the proper development of sperm. In mammals, spermatogenesis ensures continuous sperm production through a tightly orchestrated series of events in the testis. Upon completion of spermatogenesis, the condensed sperm exit the seminiferous tubules and transit through the rete testis to the efferent ductules, and to the epididymis, where they undergo further functional maturation. Specialized tight junctions between

adjacent Sertoli cells in the seminiferous epithelium delineate two cellular compartments: the basal compartment and the adluminal compartment, which are pivotal for the differentiation of germ cells inside the seminiferous tubules (8). Unlike blood plasma, which maintains a constant osmolality at ~290 mOsm/kg, the luminal fluids in different segments of the male reproductive tract possess distinct components and thus exhibit a highly dynamic range of osmolality. In the mouse, osmolality ranges from ~350 mOsm/kg in the seminiferous tubules to ~290 mOsm/kg in the rete testis, and to ~410 mOsm/kg in the cauda epididymis (9-11). While the tight junctions create a specialized adluminal milieu to protect spermatogenesis from the insults of the vascular blood contents, both the rete testis and the initial segment of the epididymis (caput) are entirely bathed in the blood vessels with an osmolality similar to that of blood plasma (8). In normal mouse sperm, alterations of the local osmotic microenvironment in the caput can elicit irreversible sperm swelling (12, 13). In addition, sperm naturally encounter a physiological osmotic decline when moving from the male cauda (~410 mOsm/kg) into the fluid of the female reproductive tract, which has an osmolality similar to the blood plasma (3, 11, 14). These dynamic osmotic alterations present a significant challenge to germ cell development and survival, and thereby necessitate volume regulation to counteract the osmotic fluctuations (3, 11, 12). When RVD fails, sperm become swollen with a “coiled” or “angulated” flagellar morphology, which helps them avoid excessive plasma membrane stretching. However, coiled sperm lose their forward motility and, as a consequence, are unable to penetrate the female utero-tubal mucus to fertilize oocytes (3, 11, 12). In fact, coiled/deformed sperm tails are commonly observed in samples from clinically infertile human patients, and this phenotype is closely

associated with male infertility. However, the molecular mechanisms or the causative mutations underlying this phenomenon are poorly understood.

The leucine-rich repeat-containing 8 (LRRC8) family comprises five paralogs (*LRRC8A*, *B*, *C*, *D* and *E*) in the mammalian genomes, which encode proteins with four transmembrane helices and 17 leucine-rich repeats (LRRs). They were initially speculated to be involved in cell-to-cell communication and signaling cascades (15) (16). Of the LRRC8 family, LRRC8A was the first member to be described, following the discovery of a human patient diagnosed with agammaglobulinemia as a result of a B-cell defect. This disease resulted from a heterozygous translocation causing the deletion of three LRRs at the C-terminus of LRRC8A (designated as LRRC8A<sup>Δ91/+35</sup>) (17). So far, this is the only causative mutation identified in *LRRC8A* associated with a human disease. Recently, two groups independently identified LRRC8 heteromers as the pore-forming subunits of the long-sought VRAC (18, 19). In particular, the LRRC8A protein (also known as SWELL1) was validated as the obligatory component of the VRAC (6) (18) (19) and functions in conjugation with at least one other LRRC8 family member in a tissue-specific manner (5, 20, 21). Subsequent studies, mostly performed in cultured cell lines, showed that LRRC8A-dependent VRAC activity is involved in a broad range of biological processes, including cell proliferation, migration, apoptosis, insulin secretion, and -uptake, in addition to volume regulation (5, 21-27). We previously reported that the *ébouriffé* (*ebo*) mutant mice show male infertility due to secondary structural defects in male germ cells (28). This spontaneous recessive mutation was subsequently identified as a 2-bp deletion in *Lrrc8a* that drastically diminishes VRAC

activity (29). In contrast to *Lrrc8a* KO mice, *ebo/ebo* mice have normal T-cell development and function suggesting LRRC8A-dependent VRAC activity is dispensable for T-cell development and function (29, 30). Nonetheless, the physiological roles and mechanistic insights of LRRC8A during postnatal development are largely unknown.

Here we report that LRRC8A-dependent VRAC function is essential for male germ cell survival and sperm motility. The LRRC8A protein is localized in the membrane of male germ cells at all stages and is most highly abundant in the midpiece of mature sperm tails. In mice, constitutive genetic ablation of *Lrrc8a* (KO) led to progressive loss of germ cells (including spermatogonia, spermatocytes and spermatids) and coiled/deformed sperm tails observed in the cauda epididymis, leading to complete infertility. Germline-specific conditional *Lrrc8a* KO (cKO) recapitulated the sperm defects observed in the KO mice, suggesting germ cell-autonomous roles of *Lrrc8a* in the testis. Importantly, we identified two spontaneous mutations that are directly linked to male infertility: the 2-bp deletion (*Lrrc8a*, c.1325delTG, p.F443\*) in the *Lrrc8a*<sup>*ebo/ebo*</sup> mice (29) and a missense mutation in a clinically sterile male patient (*LRRC8A*, c.1634G>A, p. Arg545His). These studies provide genetic evidence that LRRC8A-dependent VRAC activity is essential for spermatogenesis, and suggest that mutations in *LRRC8A* could be examined as a diagnostic target in human patients with coiled/deformed sperm tail morphology.



## Results

### **LRRC8A is ubiquitously expressed and localizes to the plasma membrane of germ cells in the testis**

By analyzing human Genotype-Tissue Expression (GTEx) database, a large collection of RNA-seq datasets from adult organs compiled by the Broad institute (31), we observed that *LRRC8A* mRNA is ubiquitously expressed in a wide spectrum of human tissues, with modest expression in the testis, comparable to that of spleen and intestine (**Figure 1A**). Because germline development is strictly time-dependent, we examined whether *Lrrc8a* expression changes during postnatal development in the mouse by analyzing previously published RNA-seq datasets (32). We found that although *Lrrc8e* transcripts were not readily detectable in postnatal testis, *Lrrc8a~d* were expressed, exhibiting declining expression patterns during postnatal development (**Figure 1B**). Since the seminiferous tubules of testis contain both *Sertoli cells* and germ cells at different developmental stages, we determined in which cell type *Lrrc8a* is predominantly expressed. By using the centrifugal elutriation approach, we successfully purified four types of germ cells as well as Sertoli cells from the mouse testis with purity >90% (data not shown) (33, 34). Quantitative reverse transcription-PCR (qRT-PCR) showed that *Lrrc8a* mRNA is expressed in both *Sertoli cells* and germ cells, with the highest expression levels in spermatogonia (**Figure 1C**). Western blot analysis using testis extracts demonstrated that LRRC8A protein expression declines throughout postnatal development, but with the lowest levels at postnatal day 0 (P0), consistent with the mRNA expression levels (**Figure 1D**), suggesting that the requirement for LRRC8A varies at different stages of germ cell development.

LRRC8A is a transmembrane protein ubiquitously expressed in a wide range of somatic cell lineages but has not been studied in germ cells. To explore the subcellular localization of LRRC8A, we mechanically separated the adjacent cells in the seminiferous tubules using a “squash preparation” in conjunction with immunofluorescence imaging (35), and found that LRRC8A localizes to the plasma membrane of germ cells, such as the spermatocytes and spermatids (**Figure 1E**). Intriguingly, immunolabeling on the mature sperm isolated from the cauda epididymis revealed that LRRC8A is predominantly localized in the midpiece segment of mature sperm tails (**Figure 1F**). This suggests that LRRC8A might be functionally important in both immature germ cells in the testis and mature sperm in the cauda.

**The 2-bp frameshift nonsense mutation in the *Lrrc8a* gene (*Lrrc8a*, c.1325delTG, p.F443\*) is associated with male infertility in the *ebo/ebo* mice**

We became interested in the role of LRRC8A in spermatogenesis when we found that *ebo* mutant mice, presenting with male infertility, harbored a mutation in the *Lrrc8a* gene (28, 29). At that time, we found that sperm from *ebo/ebo* males displayed severe structural defects (mostly secondary effects as a result of cell swelling), yet the causal relationship between the *ebo* mutation and aberrant sperm morphology, as well as the molecular mechanisms were completely unknown. We mapped the *ebo* locus to proximal mouse chromosome 2 and used targeted next-generation sequencing to discover that the *Lrrc8a* gene in *ebo/ebo* mice carries a 2-bp (TG) frameshift deletion in exon 3 (c.1325delTG, p.F443\*), introducing a premature stop codon (**Supplementary**

**Figure 1A**) (29). The predicted truncated LRRC8A protein (LRRC8A<sup>F443\*</sup>) is presumed to lack the leucine-rich repeat (LRR) domains from LRR3 to LRR17, but preserves the transmembrane domains (**Supplementary Figure 1B**). qRT-PCR analysis of testis tissue using a pair of PCR primers designed against the 5' end of *Lrrc8a* mRNA revealed that *Lrrc8a* mRNA levels in homozygous *ebo/ebo* (*Lrrc8a*<sup>F443\*/F443\*</sup>) mice were reduced to less than one third of the levels in WT or heterozygous (*Lrrc8a*<sup>+/F443\*</sup>) mice, suggesting that the mutant transcripts undergo nonsense-mediated mRNA decay (NMD) pathway in the *Lrrc8a*<sup>F443\*/F443\*</sup> testis (36) (**Supplementary Figure 1C**). Using an LRRC8A-specific monoclonal antibody generated against the C-terminus of LRRC8A (LRRC8A<sup>711~810</sup>) that is localized downstream of the premature stop codon, we verified the absence of full-length LRRC8A protein in the *Lrrc8a*<sup>F443\*/F443\*</sup> testis (**Supplementary Figure 1D**). However, it is formally possible that the truncated LRRC8A protein exists at low levels in *Lrrc8a*<sup>F443\*/F443\*</sup> testis.

### **Multiple Morphological Abnormalities of the Flagella (MMAF) in the sperm of *Lrrc8a*<sup>F443\*/F443\*</sup> mice are associated with male infertility**

Heterozygous *Lrrc8a*<sup>+/F443\*</sup> mice were phenotypically indistinguishable from their WT littermates in terms of gross morphology, whereas homozygous *Lrrc8a*<sup>F443\*/F443\*</sup> mice exhibited curly vibrissae and a characteristic wavy, sparse coat starting at around P7 (data not shown), and tended to die by ~3 months of age (29). When intercrossed with fertility-proven WT females, male *Lrrc8a*<sup>F443\*/F443\*</sup> mice never produced any pups over a 6-month breeding period for the survivors. The testis weight of *Lrrc8a*<sup>F443\*/F443\*</sup> mice was slightly lower than that of WT littermates at 6 weeks of age (**Figure 2, A-C**), but the

sizes of seminal vesicles were indistinguishable, suggesting that testosterone secretion by the *Leydig cells* was not impacted in *Lrrc8a*<sup>F443\*/F443\*</sup> males (**Figure 2C**). Notably, there were severe morphological defects in the flagella of mature sperm retrieved from the cauda epididymis in the *Lrrc8a*<sup>F443\*/F443\*</sup> males, such as headless/acephalic sperm, short tail, curly midpiece, intertwined tails around the neck, etc., part of which were described in our previous study (28). These features are reminiscent of the Multiple Morphological Abnormalities of the Flagella (MMAF) phenotype observed in clinically infertile human patients (37) (**Figure 2D**). Overall, these irregularly shaped sperm mostly displayed curly midpieces and tails, which contrasted sharply with the typical “hook type” sperm observed in WT controls (**Figure 2, D and E**). Both scanning electron microscopy (SEM) and transmission electron microscopy (TEM) further confirmed the MMAF anomalies that account for *Lrrc8a*<sup>F443\*/F443\*</sup> male infertility (**Figure 2, F and G**). Notably, the major defect causing the MMAF-like phenotype is likely due to the disruption of volume regulation in the *Lrrc8a*<sup>F443\*/F443\*</sup> mutants, causing a wide range of previously described secondary effects (28), which we investigated next.

Given that *Lrrc8a* is expressed in both *Sertoli cells* and all germ cell subtypes in testis, we investigated the functional consequences of the *Lrrc8a*<sup>F443\*</sup> mutant allele on germ cell development. Hematoxylin-Eosin (HE) staining revealed that, while the numbers of different types of germ cells, e.g., pachytene spermatocytes, round spermatids and elongating spermatids, etc., were comparable between the WT and *Lrrc8a*<sup>F443\*/F443\*</sup> testis at 6 weeks of age (**Figure 3A**), a large quantity of vacuoles was observed in *Lrrc8a*<sup>F443\*/F443\*</sup> testis presumably due to the sloughing of affected germ cells at 3

months of age (**Figure 3A**). A detailed histological examination demonstrated that the affected cells encompass spermatogonia, spermatocytes and spermatids (**Figure 3A**). These results suggest that *Lrrc8a* is required for the survival of different types of germ cells.

The deformed sperm tail morphology observed in *Lrrc8a*<sup>F443\*/F443\*</sup> cauda epididymis was largely attributed to the defective haploid spermatid development, when the sperm flagella forms in the seminiferous tubules. Thus, we carried out TEM imaging of spermatids from testis tissue to examine morphological alterations in *Lrrc8a*<sup>F443\*/F443\*</sup> males. Remarkably, and consistent with the role of LRRC8A in volume regulation, the cytoplasm of round spermatids from *Lrrc8a*<sup>F443\*/F443\*</sup> mutants is “swollen” compared to that of WT, as determined by the nuclear-to-cytoplasmic volume ratio (NC ratio) (**Figure 3, B and C**). Likewise, the shedding cytoplasmic volume in the elongating spermatids is greater in *Lrrc8a*<sup>F443\*/F443\*</sup> males than in WT. This is unlikely attributed to the compromised phagocytosis of *Sertoli cells* since this phenomenon was also observed in germ cell-specific *Lrrc8a* cKO testis (**Figure 3, B and C**). Moreover, a fraction of spermatids displayed curly midpieces and tails, and even disconnected tails as observed in cauda epididymis (**Figure 3, B and C**). Together, these data demonstrate that *Lrrc8a* is essential for germ cell development in the testis, at least in part, through its volume-regulating capability.

### **Diminished VRAC activity in the *Lrrc8a*<sup>F443\*/F443\*</sup> germline**

Dysfunctional volume regulation within germ cells inside the testis of *Lrrc8a*<sup>F443\*/F443\*</sup> mutants implies that VRAC activity is impaired in these germ cells. To test this hypothesis, we performed whole-cell recordings on acutely dissociated, primary germ cells isolated from testis. We chose spermatocytes as a representative cell type, since their large size distinguishes them from other cell types. When subjected to hypotonic stress (~220 mOsm/kg), we observed a time-dependent increase in VRAC current at +80 mV, and a decrease at -80 mV. In contrast, hypotonic stress-induced VRAC currents were diminished in spermatocytes from *Lrrc8a*<sup>F443\*/F443\*</sup> mice. (**Figure 4, A and B**).

Next, we measured VRAC currents in spermatocytes elicited by a set of depolarizing potentials ranging from -70 mV to +140 mV with 10 mV intervals starting from a holding potential of -70 mV. Voltage steps were recorded 5 min after bath application of hypotonic solution. The amplitude of whole-cell outward currents showed a voltage-dependent increase, and the current density at +140 mV was large in spermatocytes from WT mice (**Figure 4, C and D**). In contrast, the current density was markedly reduced in spermatocytes from *Lrrc8a*<sup>F443\*/F443\*</sup> mice (**Figure 4, C and D**).

To define the ionic nature of the current, we measured the reversal potential during the peak activation of the current by determining current-voltage (I-V) relationships. To eliminate the confounding contribution of voltage-gated cationic currents, we used NMDG to replace all permeable cations. When the cells were maintained in a permeable cation-free solution, the I-V curves during the peak response to low

osmolality had a reversal potential at 0 at equimolar intra- and extracellular  $\text{Cl}^-$  (100 mM) with a small degree of outward rectification (**Figure 4, E and F**). Reducing extracellular  $\text{Cl}^-$  from 100 mM to 50 mM and then to 4 mM shifted the reversal potential progressively to a more positive voltage in spermatocytes from WT mice (**Figure 4, E and F**). In contrast, lowering the extracellular  $\text{Cl}^-$  concentration did not shift the reversal potential of currents in spermatocytes from *Lrrc8a*<sup>F443\*/F443\*</sup> testis (**Figure 4, E and F**). Taken together, these results indicate that *Lrrc8a*<sup>F443\*/F443\*</sup> mutation diminishes LRRC8A-dependent VRAC activity of germ cells in the testis.

**The *Lrrc8a*<sup>F443\*</sup> mutation does not affect oogenesis, but embryos derived from *Lrrc8a*<sup>F443\*/F443\*</sup> females show early developmental failure**

In addition to causing male infertility, we observed that *Lrrc8a*<sup>F443\*/F443\*</sup> females also failed to produce pups when intercrossed with fertility-proven WT males. Therefore, we next probed whether the *Lrrc8a*<sup>F443\*</sup> mutation affected oogenesis. HE staining of paraffin-embedded ovary sections from 2-month-old *Lrrc8a*<sup>F443\*/F443\*</sup> and WT mice revealed comparable numbers of follicles at different stages with normal morphology (data not shown). Fully-grown germinal vesicle (GV) oocytes, isolated from the ovaries of pregnant mare's serum gonadotropin (PMSG)-primed mice, and mature metaphase II (MII) oocytes, retrieved from the oviducts of superovulated mice, also showed no differences in morphology or number between the *Lrrc8a*<sup>F443\*/F443\*</sup> and WT females (**Supplementary Figure 2A**). To investigate whether there is a defect in meiotic resumption and progression, we isolated GV oocytes from PMSG-primed ovaries and performed in vitro meiotic maturation assays. After 24 hr of culture, both genotypes had

comparable percentages of oocytes at the GV, MI and MII stages between the two genotypes, albeit with a slightly, but not significantly, larger number of fragmented oocytes from F443\*/F443\* females (**Supplementary Figure 2B**). These data strongly suggest that *Lrrc8a* deficiency has no major impact on oogenesis per se.

To study whether the infertility of *Lrrc8a*<sup>F443\*/F443\*</sup> females is due to defects in embryogenesis, we monitored preimplantation embryonic development in vitro. Superovulated *Lrrc8a*<sup>F443\*/F443\*</sup> and WT females were mated with WT males, and zygotes collected at E0.5 were cultured for 24~72 hr. While oocytes from *Lrrc8a*<sup>F443\*/F443\*</sup> females could be fertilized by WT sperm, the number of zygotes recovered was significantly reduced compared to WT controls (**Supplementary Figure 2, C and D**). Detailed examination at multiple time points demonstrated that, while the vast majority (>90%) of fertilized WT oocytes proceeded through the 2-, 4-, 8-cell and morula stages and ultimately reached the blastocyst stage, fertilized oocytes from *Lrrc8a*<sup>F443\*/F443\*</sup> females exhibited severe developmental delays and progressive fragmentation/degeneration, with none developing beyond the 8-cell stage (**Supplementary Figure 2E**). This resulted in the complete absence of embryo implantation sites in *Lrrc8a*<sup>F443\*/F443\*</sup> females after natural mating, in sharp contrast to the numerous sites observed in WT females, as determined by the blue dye staining in the uterus (**Supplementary Figure 2F**). Therefore, early developmental failure accounts for the infertility phenotype of *Lrrc8a*<sup>F443\*/F443\*</sup> female mice. Thus, we conclude that *Lrrc8a* is dispensable for oogenesis, but is required by the oocytes for embryonic development upon fertilization.



### **Constitutive and germline-specific *Lrrc8a* KO models recapitulate the phenotypic defect of the germ cells in *Lrrc8a*<sup>F443\*/F443\*</sup> males**

Despite the dramatically reduced *Lrrc8a* mRNA levels in *Lrrc8a*<sup>F443\*/F443\*</sup> testis, it is possible that a truncated LRRC8A protein is present in the mutant testis. Therefore, we generated two new genetically engineered mouse models (GEMMs), a constitutive *Lrrc8a* knock-out (KO) and a conditional, germline-specific *Lrrc8a* knock-out (cKO), to fully uncover the role of *Lrrc8a* in testicular development. The constitutive *Lrrc8a* KO has the exons 3 and 4 replaced by a Neo cassette bearing an upstream LacZ reporter (**Figure 5A**). Using LacZ reporter as a surrogate for *Lrrc8a* expression, we found that LRRC8A is expressed in all cell types in testis, consistent with our qRT-PCR and immunolabeling results (data not shown). Homozygous *Lrrc8a* KO pups exhibited a higher incidence of perinatal mortality (~22%), compared to *Lrrc8a*<sup>F443\*/F443\*</sup> pups (~6%), but both had similar defects in spermatogenesis in testis (data not shown) and MMAF-like sperm morphology in cauda epididymis (**Figure 5C**).

As aforementioned, *Lrrc8a* is ubiquitously expressed in all cell types in testis, and thus, the infertility phenotype might not be germline-specific but might result from a combination of defects in *Lrrc8a* function in multiple cell types. To exclude the somatic contribution of LRRC8A to the defective spermatogenesis in the *Lrrc8a* KO, we generated a germline-specific *Lrrc8a* cKO, in which *Stra8*-driven Cre excises a floxed exon 3 exclusively in germ cells of testis from P3 onward (**Figure 5B**). Indeed, we found that sperm retrieved from the cauda epididymis of all three mouse models:

F443\*/F443\*, KO and cKO, exhibited similar MMAF-like phenotypes (**Figure 5C**), and their spermatids had lower NC ratio in the testis (**Figure 3C**). These data validated a germ cell autonomous role for *Lrrc8a* that is essential for spermatogenesis and male fertility.

### **Identification of a hypomorphic *LRRC8A* mutation (c.1634G>A, p. Arg545His) in a sterile male patient**

Recent efforts with high-throughput whole-exome sequencing (WES) have identified genetic mutations (e.g., missense mutations, nonsense mutations, deletions or insertions) in dozens of genes that are closely linked to idiopathic human infertility (38). To interrogate a possible link between *LRRC8A* mutations and human infertility, we performed WES on a cohort of 102 patients diagnosed with Sertoli-cell-only syndrome (SCOS), a disease manifested by an absence of germ cells leaving only *Sertoli cells* in the testis. We chose SCOS patients because the *LRRC8A*-deficient germ cells in our mouse models degenerate during postnatal development, leading to a Sertoli-cell-only-like phenotype. Genomic DNA from the peripheral blood of SCOS patients was extracted and sequenced, and clean reads were aligned to the human reference genome (hg19). To identify putative causative mutations, variants meeting the following criteria were subjected to further analyses: *i*) nonsense, missense, frameshift or splicing variants; *ii*) absent or rare in dbSNP (<http://www.ncbi.nlm.nih.gov/snp/>), the 1000 Genomes (<http://browser.1000genomes.org/index.html>), and the ExAC databases (all with Minor Allele Frequency [MAF]<0.05); and *iii*) absent in our in-house WES database (254 healthy, fertile, Han Chinese men and 283 healthy, fertile, white men). As a result,

we identified only a single heterozygous *LRRC8A* missense variant (NM\_001127244.1, c.1634G>A, p. Arg545His) in a single patient (Patient #90) (**Figure 6A**), which was verified by Sanger sequencing (**Figure 6B**). No other variants meeting our criteria were detected in this patient. In sharp contrast to normal male controls, HE staining of a testicular biopsy from this patient showed an absence of germ cells and the presence of atypical *Sertoli cells* that aggregated inside the seminiferous tubules (**Figure 6C**).

The *LRRC8A* variant (c.1634G>A) (dbSNP: rs769167142) is a rare allelic mutation with no record in either the 1000 Genome project database or in our in-house WES database of healthy, fertile men, but is present with a frequency of 0.000008340 in the ExAC database. Its rarity suggests that it is highly likely a deleterious, causative mutation. Indeed, the incidence of this mutant allele in our SCOS cohort was 1/204 (0.0049), much higher than the MAF recorded in ExAC, likely reflecting the distinct human populations (Asian population vs. European population) in these datasets. The G to A substitution led to the conversion of a highly conserved Arginine (R) to Histidine (H) at amino acid 545 (*LRRC8A*<sup>R545H</sup>), located within the 7th LRR domain (**Figure 6A**). *In silico* analyses using multiple computational programs, such as PolyPhen, MutationTaster, SiPhy and LRT, predicted that the *LRRC8A*<sup>R545H</sup> mutation is deleterious (39). We further carried out three-dimensional (3D) homology modeling of *LRRC8A* protein structure based on the sequence homology with the closest LRR domain homologs in the Protein Data Bank (PDB) (40). As shown in **Figure 6D**, the *LRRC8A*<sup>R545H</sup> mutation substantially impacted both the topological structure of the

transmembrane domains and the distribution of the LRR domains, which could potentially abrogate chloride channel activity or downstream signaling.

To pinpoint the effect of this mutation on VRAC activity, we performed *in vitro* current recordings by utilizing our previously established *Xenopus* oocyte expression system (41). In this system, we have previously validated that simultaneous expression of fluorescently-tagged LRRC8A along with other LRRC8 subunits (except for LRRC8B) generates persistent currents under isosmotic conditions, which are further reinforced under hypotonic conditions (41). Since LRRC8E is not detectable in testis (**Figure 1**), we thus tested the combinations for LRRC8A/C and LRRC8A/D. Human LRRC8A containing a C-terminal VFP tag (8A-VFP) and either LRRC8C or LRRC8D fused at the C-terminus with mCherry (mCh) (abbreviated as 8C-mCh and 8D-mCh, respectively), were co-expressed in *Xenopus* oocytes through injection of their respective cRNAs. In comparison to WT 8A-VFP expression, mutant 8A(R545H)-VFP induced a significant decrease in the intensity of the current when co-injected with 8C-mCh or 8D-mCh, as evidenced by the typical current traces (**Figure 6E**). Remarkably, 8A(R545H)-VFP injection evoked a prominent reduction of the current intensity by ~25%~30% as compared to the WT 8A-VFP, when co-injected with either 8C-mCh or 8D-mCh, independently (**Figure 6F, left**). The current reduction in the LRRC8A (R545H) mutant was not due to changes in protein expression levels because western blot validated that the cRNAs for WT 8A-VFP and mutant 8A(R545H)-VFP produced comparable levels of proteins (**Figure 6F, right**). These data suggest that *LRRC8A*<sup>R545H</sup> is a hypomorphic mutation. To further substantiate these findings, we co-injected tandemly tagged 8A

(HA-VFP tag) with either 8C-mCh or 8D-mCh, and consistently found a reduction in current of ~30% in *LRRC8A*<sup>R545H</sup> compared to in WT *LRRC8A* (**Figure 6G**). This reduction was solely ascribed to change of VRAC activity in *LRRC8A*<sup>R545H</sup> since WT and mutant *LRRC8A* proteins were expressed at similar levels (**Figure 6G, right**). Next, to determine whether *LRRC8A*<sup>R545H</sup> acts as a dominant-negative mutation, we co-injected a 1:1 mixture of tagged WT (50%) and *LRRC8A*<sup>R545H</sup> (50%), along with either 8C-mCh or 8D-mCh. In this system, *LRRC8A*<sup>R545H</sup> had no detectable influence on channel conductance in the presence of WT *LRRC8A* (data not shown). Altogether, these led us to reason that *LRRC8A*<sup>R545H</sup> is a hypomorphic rather than a dominant-negative mutation.

As discussed, VRACs in germ cells comprise heteromers of *LRRC8A* and B/C/D subunits. Due to a lack of detectable current when using fluorescently tagged *LRRC8B*, we were unable to test the effect of the *LRRC8A*<sup>R545H</sup> mutation in the presence of *LRRC8B*. Thus, testing the complete combinatorial effect of *LRRC8A*<sup>R545H</sup>+B+C+D was not possible in our oocyte expression system. However, taking into account the evidence that *LRRC8A*<sup>R545H</sup> mutation reduced VRAC conductance for both *LRRC8A/C* and *LRRC8A/D* by ~30%, it is reasonable to speculate that the true reduction of VRAC currents due to *LRRC8A*<sup>R545H</sup> mutation in a single cell could exceed 60%. We therefore conclude that *LRRC8A*<sup>R545H</sup> is a hypomorphic mutation that contributes to the SCOS phenotype in the patient who harbors this mutation.

## Discussion

Volume regulation is a fundamental property of all living cells and is tightly controlled in response to osmotic imbalance. Anion channels are implicated in sperm volume regulation, of which the molecular identity remains poorly understood due to the lack of channel-specific blockers. The recent discovery of LRRC8A as an obligatory subunit of VRAC has invoked extensive follow-up studies, demonstrating multiple functions of LRRC8A-dependent VRAC pathway (5, 7, 18, 20, 23, 24). However, these studies have mostly been performed in immortalized cell lines, in which cells were stressed with large hypotonic imbalances. The physiological roles of LRRC8A and the importance of LRRC8A-dependent VRAC activity in vivo remain largely unknown. In this study, by utilizing a spontaneous mouse mutation (F443\*) and two GEMMs, we provided genetic evidence showing that VRAC function in male germline is dependent on LRRC8A, and VRAC activity is essential for volume regulation at different stages of germ cell development in a germ cell-autonomous manner. Germ cells deficient for *Lrrc8a* progressively degenerate during postnatal development, resulting in an SCOS-like phenotype, consistent with the notion that male germ cells are more vulnerable to volume disturbances than somatic cells (i.e., Sertoli cells) inside the seminiferous tubules.

Strikingly, we identified a putative hypomorphic mutation (*LRRC8A*<sup>R545H</sup>) that is linked to the SCOS phenotype in a sterile male patient. We provided in vitro evidence that *LRRC8A*<sup>R545H</sup> significantly reduced VRAC ion channel activity when reconstituted with LRRC8C or LRRC8D in a *Xenopus* oocyte expression system. Given that

heterozygous *Lrrc8a*<sup>+/-</sup> (KO) and *Lrrc8a*<sup>+/F443\*</sup> (*ebo*) mice are morphologically indistinguishable from their WT littermates, it is unlikely that the SCOS phenotype associated with the *LRRC8A*<sup>R545H</sup> heterozygous mutation is due to haploinsufficiency, although we cannot rule out the possibility that the functional significance of *LRRC8A* gene differs between mouse and human species. A more likely possibility is that the mutant *LRRC8A*<sup>R545H</sup> protein interrupted the functional integrity of the *LRRC8* heteromers (*LRRC8A~D*) that constitute the VRAC channel in germ cells of heterozygous *LRRC8A*<sup>R545H</sup> patient. In contrast, the absence of phenotypic defect in both heterozygous *Lrrc8a*<sup>+/-</sup> and *Lrrc8a*<sup>+/F443\*</sup> mice could be because the heterozygous KO mice still produce WT protein and the heterozygous *Lrrc8a*<sup>F443\*</sup> mutants produce the WT plus a truncated *LRRC8A* protein that, if present, lost the functional domain(s) that could interfere with WT *LRRC8A* protein and/or other VRAC-regulating *LRRC8* subunits. Although the *Xenopus* oocyte expression system is a robust, valid approach, which consistently recapitulates most of the biophysical and cell biological properties of VRAC (42), we realized that the evidence we provided here for the decreased VRAC activity impacted by R545H mutation are in vitro data and not thorough. Therefore, further studies (e.g., generation of a mouse knock-in (KI) model that mimics the *LRRC8A*<sup>R545H</sup> allele and crystal structural work) are required to fully elucidate how the mutant *LRRC8A*<sup>R545H</sup> protein impairs VRAC channel activity leading to the SCOS phenotype.

Previous studies, using electrophysiological patch-clamp recordings, have identified a handful of ion channels that are either ubiquitously expressed or sperm-specific, such

as SLO3 (pH-regulated K<sup>+</sup> channel) and CatSper (Ca<sup>2+</sup> permeable cation channel) (3, 10, 43-45), in the testis. Genetic evidence demonstrates that these channels, which are relatively well characterized in terms of their biophysical properties and functional importance, play versatile roles in sperm capacitation and motility, the acrosome reaction, and fertilization (3, 4, 43, 46). In contrast, the precise molecular make-up and the physiological function of VRAC in the germline are not understood. Several lines of evidence suggest that sperm volume regulation must be tightly controlled during sperm transition through the rete testis, efferent ductules, caput and cauda of the epididymis and into the female reproductive tract. First, three GEMMs, c-Ros (*Ros1*) KO, *Gpx5-Tag2* and *Esr1* KO (12, 47, 48), in which the manipulated genes compromised epithelial function causing reduced fluid osmolality in the initial segment of caput epididymis or in the efferent duct, were unexpectedly found to be infertile due to swollen sperm. Second, Bestrophin 1 (BEST1), a controversial Ca<sup>2+</sup>-activated Cl<sup>-</sup> channel linked to Ca<sup>2+</sup> homeostasis and neurotransmitter release, was recently discovered to specifically regulate sperm volume, not Ca<sup>2+</sup> homeostasis, to cope with hypotonicity (49, 50). BEST1 protein is specifically localized to the equatorial segment of the sperm head, and *Best1* KO mice showed severe subfertility owing to compromised RVD ability causing sperm swelling (49-51). Third, the dedicated water-permeable channel Aquaporin 3 (AQP3) has been validated as a *bona fide* sperm intrinsic volume-regulatory player during RVD upon sperm swelling. AQP3 is exclusively localized in the principal piece of the sperm tail, and *Aqp3*-null mouse sperm are characterized by “curly” or “angulated” tails (52). The GEMM evidence unambiguously proved that the volume-regulatory capacity is an important determinant of the fertilizing potential of sperm. However,



neither *Best1*- nor *Aqp3*-deficient male mice are completely infertile, suggesting the existence of other possible RVD-mediating machinery in germ cells. Moreover, previous studies focused primarily on “mature sperm”, i.e., after their exit from seminiferous tubules. The importance of RVD in germ cell development during spermatogenesis in seminiferous tubules is currently unclear. We showed that loss of LRRC8A-dependent VRAC activity leads to a disruption in the development of immature germ cells including spermatogonia, spermatocytes and spermatids, and these defective germ cells progressively degenerate over time, in the *Lrrc8a*<sup>F443\*/F443\*</sup>, *Lrrc8a* KO and *Lrrc8a* cKO testis. Indeed, we observed large vacuoles in male mice that reached 12 months of age due to a massive loss of germ cells in the *Stra8*-cre driven cKO testis which resembles the human SCOS phenotype. These mouse models provide genetic evidence that volume-regulatory activity is essential for spermatogenesis in the testis as well as sperm maturation in the epididymis.

Apoptotic cells initiate persistent cell shrinkage preceding caspase activation and DNA fragmentation in a process known as apoptotic volume decrease (AVD), which is thought to share the same Cl<sup>-</sup> channel activity as VRAC (53). Germ cells are highly susceptible to apoptotic stimuli linked to the inherent genome-wide chromatin remodeling. Surprisingly, we didn't see an increase in apoptosis in germ cells from *Lrrc8a*<sup>F443\*/F443\*</sup> or *Lrrc8a* KO testis by immunolabeling (data not shown). Consistently, genome-wide RNA-seq analyses identified overrepresented GO terms linked to disruptions in development and reproductive system metabolism, but not apoptosis (**Supplementary Figure 3, A and B**). Likewise, Gene Set Enrichment Analysis (GSEA)

identified only metabolic pathways unrelated to apoptosis (**Supplementary Figure 3, A-C**). Such evidence suggests that the mutant germ cells died through an apoptosis-independent pathway, e.g., in extreme cases, cell bursting. This is in agreement with the notion that LRRC8A-dependent VRAC is important for AVD and that loss of LRRC8A function impedes apoptosis (53). Given that all members of the LRRC8 family except LRRC8E are present in germ cells (**Figure 1**), and that the precise combination of LRRC8 heteromers determines the substrate selectivity of a particular VRAC (5, 21, 26), it is conceivable that VRACs in germ cells might have other functions in addition to volume regulation, such as the uptake of specific paracrine factors secreted by the neighboring *Sertoli cells*.

It is interesting to note that both male and female *Lrrc8a*<sup>F443\*/F443\*</sup> and *Lrrc8a* KO mice are completely infertile. However, in contrast to the defects in spermatogenesis we observed in males, oogenesis was normal in females, suggesting that LRRC8A and LRRC8A-dependent VRAC activity are dispensable for oogenesis. This supports the notion that cell volume regulation is not critical for oocyte growth in the follicles (54). Since every growing oocyte is encompassed by a specialized extracellular matrix shell-zona pellucida (ZP), oocyte volume is essentially determined by its adhesion to the ZP (54). Nonetheless, embryos derived from LRRC8A-deficient oocytes exhibit early developmental arrest and progressive degeneration, suggesting that functional integrity of VRAC in oocytes is critical for preimplantation embryonic development.

In summary, we showed that LRRC8A-mediated VRAC is a key volume regulator, essential for male germ cell development. Genetic mutations that diminish LRRC8A-dependent VRAC activity may lead to germ cell defects, causing infertility in both mice and humans. Hence, LRRC8A could potentially serve as a diagnostic or therapeutic target for human patients suffering from infertility.

## Methods

### Mice, targeted region sequencing and genotyping

The *Lrrc8a*<sup>ebo</sup> autosomal recessive mutation arose spontaneously in a substrain of BALB/c mice from the Institut Pasteur, Paris, France. Co-isogenic mice harboring the mutation were transferred to MD Anderson, where the mutant allele was introgressed into the FVB/N background by classical and marker-assisted backcrossing to produce the FVB/N.Cg-*Lrrc8a*<sup>ebo</sup> congenic strain (>N10). Microsatellite genotyping (genome scan using polymorphic markers) was carried out by Laboratory Animal Genetic Services located at MD Anderson. Specific pathogen-free (SPF) FVB/N.Cg-*Lrrc8a*<sup>ebo</sup> mice were obtained through re-derivation by embryo transfer and used for the phenotypic characterization. For the targeted region sequencing, targeted DNA for the candidate region on chromosome 2 was sequenced at the MD Anderson Sequencing and Microarray Facility using a mouse capture array from Ambry Genetics Corp. (Aliso Viejo, CA, USA) and according to the manufacturer's protocol. For genotyping, in order to distinguish the 2-bp deletion difference between the WT and *Lrrc8a*<sup>F443\*</sup> alleles, two specific forward primers tagged with the fluorescent dyes VIC and 6-FAM were designed against the WT and *Lrrc8a*<sup>F443\*</sup> alleles, respectively, along with a common reverse primer. A standard endpoint PCR assay was performed according to the Kompetitive Allele Specific PCR genotyping system (KASP) (LGC Genomics) protocol. Fluorescent intensity was recorded using the Fluostar Optima plate reader (BMG Labtech).

To generate the constitutive *Lrrc8a* KO mice (KO), sperm from C57BL/6N-*Lrrc8a*<sup>tm1(KOMP)Vlcg</sup> null/LacZreporter line were purchased from the Knockout Mouse Project (KOMP) repository (UC Davis, CA, USA), and live pups were recovered through in vitro fertilization (IVF). To generate the germline-specific conditional *Lrrc8a* KO (cKO) mouse model, sperm purchased from KOMP (C57BL/6N-*Lrrc8a*<sup>tm1.1(KOMP)Vlcg</sup>, in which two LoxP sites flank the exon3) were used to produce *Lrrc8a*<sup>flox</sup> mice through IVF. *Stra8*-cre deleter mice (C57BL/6J, The Jackson Laboratory, Stock No: 008208) were intercrossed with *Lrrc8a*<sup>flox</sup> mice to generate the *Stra8*-cre; *Lrrc8a*<sup>fl/fl</sup> (cKO) mice. Mouse protocols were approved by the Institutional Care and Use Committee (IACUC) at MD Anderson Cancer Center.

### **Human samples and Whole Exome Sequencing (WES)**

A total of 102 patients diagnosed with “Sertoli-cell only syndrome (SCOS)” were recruited by the reproductive center at the University of Science and Technology of China. The diagnostic criteria for SCOS are as follows: *i*) no sired children, no visible sperm discovered in the pellets of semen samples taken on three different occasions; *ii*) no obstruction, inflammation or injury in the reproductive system or pelvic cavity; *iii*) no karyotypic aberrations or Y chromosome microdeletions; *iv*) only Sertoli cells are present in the seminiferous tubules. Samples from an in-house cohort of healthy, fertile males (254 healthy Han Chinese males and 283 healthy white males) were used as controls.

Whole exome sequencing (WES) was performed using genomic DNA isolated from whole peripheral blood. The fragments of human whole exome were captured using the Agilent Human All Exon 50 Mb kit (Agilent Technology) and sequenced on a Illumina HiSeq2000. Clean reads were mapped to the human reference genome (hg19) using the Burrows-Wheeler Alignment tool (<http://bio-bwa.sourceforge.net/>). To identify detrimental genetic mutations, variants fulfilling the following criteria were called and annotated using the Genome Analysis Toolkit and ANNOVAR respectively: (1) nonsense, missense, frameshift or splicing variants; (2) absent or rare in dbSNP (<http://www.ncbi.nlm.nih.gov/snp/>), the 1000 Genomes (<http://browser.1000genomes.org/index.html>), and our in-house WES database of 254 healthy, fertile Han Chinese males and 283 healthy, fertile white males).

## Web Resources

**1000 Genomes**, <http://www.internationalgenome.org/>

**dbSNP**, <https://www.ncbi.nlm.nih.gov/projects/SNP/>

**ExAC Browser**, <http://exac.broadinstitute.org/>

**GenBank**, <https://www.ncbi.nlm.nih.gov/genbank/>

**OMIM**, <http://www.omim.org/>

**PolyPhen-2**, <http://genetics.bwh.harvard.edu/pph2/>

**RefSeq**, <http://www.ncbi.nlm.nih.gov/RefSeq>

**SIFT**, <http://sift.bii.a-star.edu.sg/>

## Histopathology

Freshly dissected testes samples were immediately fixed in Bouin's solution for 24 hr at room temperature. Other fresh tissues were fixed in the 10% formalin solution for 48 hr at room temperature, unless otherwise stated. Following fixation, tissues were washed in 70% ethyl alcohol-Li<sub>2</sub>CO<sub>3</sub>-saturated solution and embedded in paraffin for histological analysis. Testicular cross sections (5 µm thickness) were evaluated by using either periodic acid-Schiff (PAS) or HE staining.

To analyze the sperm parameters, mice were sacrificed through CO<sub>2</sub> inhalation followed by cervical dislocation. Fresh cauda epididymis was dissected and sperm were released into TYH medium at specific osmolalities (~290/330/360/410 mOsm/kg) through puncturing the cauda epididymis using two fine needles. Sperm morphology and motility were examined using phase-contrast microscopy, and a computer-assisted sperm analysis (CASA) station, respectively.

Ovary follicles in the cross-sections of paraffin-embedded slides were identified as primordial, primary, secondary, antral, or corpus luteum (CL) based on cellular composition and morphology. Atretic follicles, as characterized by pyknotic granulosa cells and/or a grossly misshapen oocyte were omitted from counts. Sections were then combined in the third dimension (stacked, 600 µm total thickness) to analyze average total number of each follicular subtype in each sample. Statistical comparisons were carried out using at least three females for each genotype. Samples in the slides were scanned and digitalized using an Aperio ScanScope CS slide scanner (Aperio Technologies, Vista, CA).

## **Immunohistochemistry**

Monoclonal LRRC8A antibody (clone 8H9) was purchased from Sigma, St. Louis, MO. For immunolabeling, testicular samples were fixed in 4% paraformaldehyde (PFA) at 4°C overnight, followed by washing in 10%~30% sucrose for 3 hr at room temperature. Cryo-preserved testes were cut into cross-sections (5 µm), mounted on Superfrost Plus glass slides and air-dried. Samples were subject to antigen retrieval processing by submerging the slides in boiling citrate buffer (pH=6.0) for 15 min. After three washes in 1XPBS, samples were incubated in blocking buffer (5%BSA+0.3% Triton X-100) at room temperature for 1 hr, followed by incubation with primary antibody at 4°C, overnight. The next day, slides were washed 3 times in 1XPBS, and incubated with secondary antibody conjugated with a specific fluorescent dye for 1 hr at room temperature. After a brief washing in 1XPBS, slides were mounted using ProLong™ Gold Antifade Mountant with DAPI medium (ThermoFisher). Samples were imaged using a Zeiss LSM880 Confocal system (Zeiss).

To determine the subcellular localization of LRRC8A protein in germ cells, squashed seminiferous tubules were generated following published procedures (55). For immunolabeling of paraffin-embedded samples, sections were cleared with xylenes and rehydrated in a gradient of alcohol, followed by incubation with 3% H<sub>2</sub>O<sub>2</sub> to block endogenous peroxidase activity. After incubation with blocking buffer (10% horse serum) for 1 hr at room temperature, sections were incubated with primary antibody for 1 hr at room temperature or at 4°C overnight. Immunodetection was performed using a VectaStain ABC kit (Vector labs, Burlingame, CA) and 3,3'-diaminobenzidine substrate (Vector Labs) following standard procedures.



## **Western Blot**

Total protein preparation from mice testes for western blot analysis has been described in detail (56). Protein lysates were prepared by homogenizing the snap-frozen tissues in the radioimmunoprecipitation assay (RIPA) buffer supplemented with the proteinase inhibitors (Roche). Protein concentrations were determined by the Bradford assay according to the manufacturer's protocol (Bio-Rad). A total of 40  $\mu$ g protein was separated on an 11% SDS-PAGE gel and was transferred to PVDF membrane for each sample. Blots were treated with ECL reagent (Amersham Bioscience) and exposed to X-ray film. Actin served as a loading control.

## **Electron Microscopy**

Freshly dissected testes were carefully cut into small pieces and fixed at 4°C for 2 days in buffer containing 3% paraformaldehyde, 3% glutaraldehyde and 0.2% picric acid. Sperm released from the cauda epididymis were fixed under the same conditions. Fixed samples were sent to the High Resolution Electron Microscopy Facility (HREMF) at MD Anderson Cancer Center for further processing following standard protocols as described previously. Electron micrographs were obtained using a JEM1010 transmission electron microscope (TEM) and a JSM 5900 scanning electron microscope (SEM). To calculate the nuclear-to-cytoplasmic volume ratio, the cross-section areas of the nucleus ( $A_n$ ) and the cell ( $A_c$ ) were measured from two-dimensional TEM images

using image J (NIH). The nuclear-to-cytoplasmic volume ratio (NC ratio) was estimated using the formula below (57):  $\frac{V_n}{V_c} = \left(\frac{A_n}{A_c}\right)^{\frac{3}{2}}$ .  $V_n$ , Volume of nucleus;  $V_c$ , Volume of cell.

The experiments were performed in biological triplicates and the statistics were calculated from 20 cells from each sample.

### **Electrophysiological recordings**

Testicular single cell suspensions were prepared as described previously with minor modifications (36). Briefly, the interstitial cells between the seminiferous tubules were removed by sedimentation following collagenase IV digestion. Single cell suspensions were achieved by trypsin digestion. Dissociated germ cells were allowed to attach to cover-glasses precoated with poly-D-lysine and laminin in 35-mm culture dishes containing 90% Dulbecco's modified Eagle's medium and 10% newborn calf serum. The cells were incubated in a CO<sub>2</sub> incubator (5% CO<sub>2</sub>) at 37°C for 1~4 hr before recording. Different types of germ cells (spermatogonia, spermatocytes and round spermatids) were identified by cell size and morphology using differential interference contrast microscopy. Whole-cell patch-clamp recordings were performed with an EPC-10 amplifier (HEKA Instruments, Lambrecht, Germany). Recording electrodes (resistance, 2~3 MΩ) were pulled from thick-walled borosilicate glasses and fire-polished. After a whole-cell configuration was established, the cell membrane capacitance and series resistance were electronically compensated. The signals were digitized at 10 kHz and low-pass filtered at 1 kHz. All recordings were performed at 25°C. External hypotonic solution (220 mOsm/kg) was comprised of 95 mM NaCl, 2 mM CaCl<sub>2</sub>, 1 mM MgCl<sub>2</sub>, 5

mM CsCl, 10 mM HEPES, and 10 mM glucose (pH 7.4 adjusted with NaOH). Sucrose was then added to make normotonic solution (320 mOsm/kg). The internal pipette solution consisted of 120 mM Cs-aspartate, 10 mM Cs<sub>4</sub>BAPTA, 4 mM MgATP, 2 mM MgCl<sub>2</sub>, 8 mM NaCl, and 10 mM HEPES (pH 7.2 adjusted with CsOH). To record VRAC currents in hypotonic solution, cells were held at -70 mV with voltage ramps from -100 mV to +100 mV over 400 ms every 5 s. Currents were recorded for 5 min after bath application of hypotonic solution, and those currents measured at -80 and +80 mV were plotted to show the time course of current changes. In addition, currents were recorded using voltage steps from -70 to +140 mV at 10-mV intervals (step duration, 40 ms) 5 min after bath application of hypotonic solution. VRAC current density was calculated by normalizing the current to capacitance to account for differences in cell sizes. To determine the reversal potential of currents, an equimolar concentration of NMDG-Cl was used to replace NaCl, KCl, or CaCl<sub>2</sub>; and Cl<sup>-</sup> was replaced with aspartate when needed. The permeable cation-free solutions contained (in mM) 100 NMDG-Cl, 10 HEPES, 10 glucose, and 2 Na<sub>2</sub>-ATP at pH 7.4. Data analysis was performed using the Pulse software (HEKA Instruments).

### ***Xenopus* oocytes injection and voltage-clamp recordings**

All procedures for plasmids construction, *Xenopus* oocyte preparation, injection, and voltage-clamp recordings were performed as described in detail previously (41, 58). Briefly, fluorescently tagged plasmids were linearized by NotI digestion prior to in vitro transcription using the mMessage mMachine SP6 kit (Ambion). Human *LRRC8A*<sup>R545H</sup> variant was generated by site-directed mutagenesis. Electrophysiology was performed

in the hypotonic solution containing (in mM) 48 NaCl, 2 KCl, 1.8 CaCl<sub>2</sub>, 1 MgCl<sub>2</sub>, and 10 Hepes with pH 7.3 (120 mOsm/kg). 50nl of cRNA containing 10ng of WT LRRC8A-VFP or LRRC8A(R545H)-VFP were co-expressed with 10ng of LRRC8C-mCh or LRRC8D-mCh. For the co-expression assays, 5ng of WT LRRC8A-VFP plus 5ng of LRRC8A<sup>R545H</sup>-VFP were co-expressed together with 10ng of LRRC8C-mCh or LRRC8D-mCh. To measure the protein expression levels in the membrane for surface analysis, HA tagged WT LRRC8A plasmid (LRRC8A HA-VFP) and mutant (LRRC8A(R545) HA-VFP) were generated by inserting an HA epitope into the first extracellular loop of LRRC8A. For each plasmid, three batches of cRNAs were prepared and each assay was carried out as described with the oocyte number indicated. To estimate the slope conductance, the Axon™ pClamp™ Clampfit ® software was used. Slope conductance was calculated by fitting “straight line, standard” in a +10 to +70mV voltage range from the I-V curves. In order to unify and clarify the experiments, results were normalized to the WT values in each of the combinations tested.

## **Statistics**

All experiments were performed using at least in three biological replicates, unless otherwise stated. Data were presented as mean±SD, unless indicated. Statistical values were calculated using Student's t test between groups or ANOVA as indicated. P values less than 0.05 were deemed as statistically significant.

## **Study approval**

All animal care and use procedures were approved by the Institutional Animal Care and Use Committee (IACUC) of the MD Anderson Cancer Center and were in accordance with the National Institute of Health regulations for the care and use of animals in research

### **Author contributions**

FB and JB conceived and designed the study, conducted, and analyzed the majority of experiments, and prepared the manuscript with input from TC, MTB, SYRD, JHR, RE, H-LP, RSG, and QS. CJP, JK, HZ, CJM, TH, JJ, CDP, JC, MD, M-HZ, YH, and HG-P performed some experiments and analyzed data. J-LG, RSG, RE, and H-LP provided scientific insight, supervised some analyses, and edited the manuscript. KL, and YL conducted the bioinformatics analyses.

## **Acknowledgments**

We thank the Research Animal Support Facility-Smithville for their assistance with the maintenance of the mouse strains, the Histology Core for processing the samples, the Molecular Biology Facility Core for RNA sequencing, the Bioinformatics and Biostatistics Services for data analysis, and Dr. Briana Dennehey for editing the manuscript. This study made use of the Research Animal Support Facility-Smithville (including Laboratory Animal Genetic Services and Research Histology Pathology and Imaging Core), the Sequencing and Microarray Facility and the High Resolution Electron Microscopy Facility (HREMF), all of which are supported by P30 CA016672 DHHS/NCI Cancer Center Support Grant to MD Anderson Cancer Center. This work was supported in part by Departmental Funds to FB, by National Basic Research Program of China (2014CB943101) and the National Natural Science Foundation of China (31371519 and 313111245) to QS, and R01 ES016591 to JHR.

**Conflict of interest:** The authors have declared that no conflict of interest exists.

## References

1. Hoffmann EK, Lambert IH, and Pedersen SF. Physiology of cell volume regulation in vertebrates. *Physiol Rev.* 2009;89(1):193-277.
2. Day RE, Kitchen P, Owen DS, Bland C, Marshall L, Conner AC, et al. Human aquaporins: regulators of transcellular water flow. *Biochim Biophys Acta.* 2014;1840(5):1492-506.
3. Yeung CH, Barfield JP, and Cooper TG. Chloride channels in physiological volume regulation of human spermatozoa. *Biol Reprod.* 2005;73(5):1057-63.
4. Cooper TG, and Yeung CH. Involvement of potassium and chloride channels and other transporters in volume regulation by spermatozoa. *Curr Pharm Des.* 2007;13(31):3222-30.
5. Jentsch TJ, Lutter D, Planells-Cases R, Ullrich F, and Voss FK. VRAC: molecular identification as LRRC8 heteromers with differential functions. *Pflugers Arch.* 2016;468(3):385-93.
6. Pedersen SF, Klausen TK, and Nilius B. The identification of a volume-regulated anion channel: an amazing Odyssey. *Acta Physiol (Oxf).* 2015;213(4):868-81.
7. Syeda R, Qiu Z, Dubin AE, Murthy SE, Florendo MN, Mason DE, et al. LRRC8 Proteins Form Volume-Regulated Anion Channels that Sense Ionic Strength. *Cell.* 2016;164(3):499-511.
8. Mruk DD, and Cheng CY. Tight junctions in the testis: new perspectives. *Philos Trans R Soc Lond B Biol Sci.* 2010;365(1546):1621-35.



9. Cooper TG, Yeung CH, Wagenfeld A, Nieschlag E, Poutanen M, Huhtaniemi I, et al. Mouse models of infertility due to swollen spermatozoa. *Mol Cell Endocrinol.* 2004;216(1-2):55-63.
10. Petrunkina AM, Harrison RA, Ekhlesi-Hundrieser M, and Topfer-Petersen E. Role of volume-stimulated osmolyte and anion channels in volume regulation by mammalian sperm. *Mol Hum Reprod.* 2004;10(11):815-23.
11. Yeung CH, Barfield JP, and Cooper TG. Physiological volume regulation by spermatozoa. *Mol Cell Endocrinol.* 2006;250(1-2):98-105.
12. Yeung CH, Anapolski M, Sipila P, Wagenfeld A, Poutanen M, Huhtaniemi I, et al. Sperm volume regulation: maturational changes in fertile and infertile transgenic mice and association with kinematics and tail angulation. *Biol Reprod.* 2002;67(1):269-75.
13. Domeniconi RF, Souza AC, Xu B, Washington AM, and Hinton BT. Is the Epididymis a Series of Organs Placed Side By Side? *Biol Reprod.* 2016;95(1):10.
14. Yeung CH, Callies C, Rojek A, Nielsen S, and Cooper TG. Aquaporin isoforms involved in physiological volume regulation of murine spermatozoa. *Biol Reprod.* 2009;80(2):350-7.
15. Smits G, and Kajava AV. LRRC8 extracellular domain is composed of 17 leucine-rich repeats. *Mol Immunol.* 2004;41(5):561-2.
16. Abascal F, and Zardoya R. LRRC8 proteins share a common ancestor with pannexins, and may form hexameric channels involved in cell-cell communication. *Bioessays.* 2012;34(7):551-60.

17. Sawada A, Takihara Y, Kim JY, Matsuda-Hashii Y, Tokimasa S, Fujisaki H, et al. A congenital mutation of the novel gene LRRC8 causes agammaglobulinemia in humans. *J Clin Invest.* 2003;112(11):1707-13.
18. Qiu Z, Dubin AE, Mathur J, Tu B, Reddy K, Miraglia LJ, et al. SWELL1, a plasma membrane protein, is an essential component of volume-regulated anion channel. *Cell.* 2014;157(2):447-58.
19. Voss FK, Ullrich F, Munch J, Lazarow K, Lutter D, Mah N, et al. Identification of LRRC8 heteromers as an essential component of the volume-regulated anion channel VRAC. *Science.* 2014;344(6184):634-8.
20. Gradogna A, Gavazzo P, Boccaccio A, and Pusch M. Subunit-dependent oxidative stress sensitivity of LRRC8 volume-regulated anion channels. *J Physiol.* 2017;595(21):6719-33.
21. Planells-Cases R, Lutter D, Guyader C, Gerhards NM, Ullrich F, Elger DA, et al. Subunit composition of VRAC channels determines substrate specificity and cellular resistance to Pt-based anti-cancer drugs. *EMBO J.* 2015;34(24):2993-3008.
22. Behe P, Foote JR, Levine AP, Platt CD, Chou J, Benavides F, et al. The LRRC8A Mediated "Swell Activated" Chloride Conductance Is Dispensable for Vacuolar Homeostasis in Neutrophils. *Front Pharmacol.* 2017;8:262.
23. Schober AL, Wilson CS, and Mongin AA. Molecular composition and heterogeneity of the LRRC8-containing swelling-activated osmolyte channels in primary rat astrocytes. *J Physiol.* 2017;595(22):6939-51.

24. Zhang Y, Xie L, Gunasekar SK, Tong D, Mishra A, Gibson WJ, et al. SWELL1 is a regulator of adipocyte size, insulin signalling and glucose homeostasis. *Nat Cell Biol.* 2017;19(5):504-17.
25. Lee CC, Freinkman E, Sabatini DM, and Ploegh HL. The protein synthesis inhibitor blasticidin s enters mammalian cells via leucine-rich repeat-containing protein 8D. *J Biol Chem.* 2014;289(24):17124-31.
26. Lutter D, Ullrich F, Lueck JC, Kempa S, and Jentsch TJ. Selective transport of neurotransmitters and modulators by distinct volume-regulated LRRC8 anion channels. *J Cell Sci.* 2017;130(6):1122-33.
27. Kang C, Xie L, Gunasekar SK, Mishra A, Zhang Y, Pai S, et al. SWELL1 is a glucose sensor regulating beta-cell excitability and systemic glycaemia. *Nat Commun.* 2018;9(1):367.
28. Lalouette A, Lablack A, Guenet JL, Montagutelli X, and Segretain D. Male sterility caused by sperm cell-specific structural abnormalities in ebouriffe, a new mutation of the house mouse. *Biol Reprod.* 1996;55(2):355-63.
29. Platt CD, Chou J, Houlihan P, Badran YR, Kumar L, Bainter W, et al. Leucine-rich repeat containing 8A (LRRC8A)-dependent volume-regulated anion channel activity is dispensable for T-cell development and function. *J Allergy Clin Immunol.* 2017;140(6):1651-9 e1.
30. Kumar L, Chou J, Yee CS, Borzutzky A, Vollmann EH, von Andrian UH, et al. Leucine-rich repeat containing 8A (LRRC8A) is essential for T lymphocyte development and function. *J Exp Med.* 2014;211(5):929-42.

31. Consortium GT. Human genomics. The Genotype-Tissue Expression (GTEx) pilot analysis: multitissue gene regulation in humans. *Science*. 2015;348(6235):648-60.
32. Margolin G, Khil PP, Kim J, Bellani MA, and Camerini-Otero RD. Integrated transcriptome analysis of mouse spermatogenesis. *BMC Genomics*. 2014;15:39.
33. Li W, Wu J, Kim SY, Zhao M, Hearn SA, Zhang MQ, et al. Chd5 orchestrates chromatin remodelling during sperm development. *Nat Commun*. 2014;5:3812.
34. Bao J, Rousseaux S, Shen J, Lin K, Lu Y, and Bedford MT. The arginine methyltransferase CARM1 represses p300\*ACT\*CREMtau activity and is required for spermiogenesis. *Nucleic Acids Res*. 2018.
35. Kotaja N, Kimmins S, Brancorsini S, Hentsch D, Vonesch JL, Davidson I, et al. Preparation, isolation and characterization of stage-specific spermatogenic cells for cellular and molecular analysis. *Nat Methods*. 2004;1(3):249-54.
36. Bao J, Vitting-Seerup K, Waage J, Tang C, Ge Y, Porse BT, et al. UPF2-Dependent Nonsense-Mediated mRNA Decay Pathway Is Essential for Spermatogenesis by Selectively Eliminating Longer 3'UTR Transcripts. *PLoS Genet*. 2016;12(5):e1005863.
37. Coutton C, Escoffier J, Martinez G, Arnoult C, and Ray PF. Teratozoospermia: spotlight on the main genetic actors in the human. *Hum Reprod Update*. 2015;21(4):455-85.
38. Krausz C, and Riera-Escamilla A. Genetics of male infertility. *Nat Rev Urol*. 2018.

39. Dong C, Wei P, Jian X, Gibbs R, Boerwinkle E, Wang K, et al. Comparison and integration of deleteriousness prediction methods for nonsynonymous SNVs in whole exome sequencing studies. *Hum Mol Genet.* 2015;24(8):2125-37.
40. Biasini M, Bienert S, Waterhouse A, Arnold K, Studer G, Schmidt T, et al. SWISS-MODEL: modelling protein tertiary and quaternary structure using evolutionary information. *Nucleic Acids Res.* 2014;42(Web Server issue):W252-8.
41. Gaitan-Penas H, Gradogna A, Laparra-Cuervo L, Solsona C, Fernandez-Duenas V, Barrallo-Gimeno A, et al. Investigation of LRRC8-Mediated Volume-Regulated Anion Currents in *Xenopus* Oocytes. *Biophys J.* 2016;111(7):1429-43.
42. Gaitan-Penas H, Pusch M, and Estevez R. Expression of LRRC8/VRAC Currents in *Xenopus* Oocytes: Advantages and Caveats. *Int J Mol Sci.* 2018;19(3).
43. Yeung CH, Barfield JP, and Cooper TG. The role of anion channels and Ca<sup>2+</sup> in addition to K<sup>+</sup> channels in the physiological volume regulation of murine spermatozoa. *Mol Reprod Dev.* 2005;71(3):368-79.
44. Qi H, Moran MM, Navarro B, Chong JA, Krapivinsky G, Krapivinsky L, et al. All four CatSper ion channel proteins are required for male fertility and sperm cell hyperactivated motility. *Proc Natl Acad Sci U S A.* 2007;104(4):1219-23.
45. Zeng XH, Yang C, Kim ST, Lingle CJ, and Xia XM. Deletion of the Slo3 gene abolishes alkalization-activated K<sup>+</sup> current in mouse spermatozoa. *Proc Natl Acad Sci U S A.* 2011;108(14):5879-84.

46. Chan HC, Chen H, Ruan Y, and Sun T. Physiology and pathophysiology of the epithelial barrier of the female reproductive tract: role of ion channels. *Adv Exp Med Biol.* 2012;763:193-217.
47. Yeung CH, Sonnenberg-Riethmacher E, and Cooper TG. Infertile spermatozoa of c-ros tyrosine kinase receptor knockout mice show flagellar angulation and maturational defects in cell volume regulatory mechanisms. *Biol Reprod.* 1999;61(4):1062-9.
48. Joseph A, Shur BD, Ko C, Chambon P, and Hess RA. Epididymal hypo-osmolality induces abnormal sperm morphology and function in the estrogen receptor alpha knockout mouse. *Biol Reprod.* 2010;82(5):958-67.
49. Fischmeister R, and Hartzell HC. Volume sensitivity of the bestrophin family of chloride channels. *J Physiol.* 2005;562(Pt 2):477-91.
50. Milenkovic A, Brandl C, Milenkovic VM, Jendryke T, Sirianant L, Wanitchakool P, et al. Bestrophin 1 is indispensable for volume regulation in human retinal pigment epithelium cells. *Proc Natl Acad Sci U S A.* 2015;112(20):E2630-9.
51. Strauss O, Muller C, Reichhart N, Tamm ER, and Gomez NM. The role of bestrophin-1 in intracellular Ca(2+) signaling. *Adv Exp Med Biol.* 2014;801:113-9.
52. Chen Q, Peng H, Lei L, Zhang Y, Kuang H, Cao Y, et al. Aquaporin3 is a sperm water channel essential for postcopulatory sperm osmoadaptation and migration. *Cell Res.* 2011;21(6):922-33.
53. Okada Y, Maeno E, Shimizu T, Dezaki K, Wang J, and Morishima S. Receptor-mediated control of regulatory volume decrease (RVD) and apoptotic volume decrease (AVD). *J Physiol.* 2001;532(Pt 1):3-16.

54. Tartia AP, Rudraraju N, Richards T, Hammer MA, Talbot P, and Baltz JM. Cell volume regulation is initiated in mouse oocytes after ovulation. *Development*. 2009;136(13):2247-54.
55. Bao J, Wu Q, Song R, Jie Z, Zheng H, Xu C, et al. RANBP17 is localized to the XY body of spermatocytes and interacts with SPEM1 on the manchette of elongating spermatids. *Mol Cell Endocrinol*. 2011;333(2):134-42.
56. Yao PL, Lin YC, Sawhney P, and Richburg JH. Transcriptional regulation of FasL expression and participation of sTNF-alpha in response to sertoli cell injury. *J Biol Chem*. 2007;282(8):5420-31.
57. Finan JD, Leddy HA, and Guilak F. Osmotic stress alters chromatin condensation and nucleocytoplasmic transport. *Biochem Biophys Res Commun*. 2011;408(2):230-5.
58. Gaitan-Penas H, Apaja PM, Arnedo T, Castellanos A, Elorza-Vidal X, Soto D, et al. Leukoencephalopathy-causing CLCN2 mutations are associated with impaired Cl(-) channel function and trafficking. *J Physiol*. 2017;595(22):6993-7008.

## Figure legends

**Figure 1. Expression and localization of LRRC8A.** (A) Relative median expression levels of *LRRC8A* mRNA in different human tissues as detected by RNA-seq according to the GTEx database. Tissues were collected from 570 adult post-mortem individual donors. RPKM, reads per kilobase of transcript per million; (B) Relative mRNA expression levels of *Lrrc8* paralogs (*Lrrc8a~e*) in the developing mouse testis during postnatal development (calculated from GEO accession number GSE44346)<sup>32</sup>. P, Postnatal day. (C) qPCR analysis of *Lrrc8a* mRNA levels among the purified Sertoli cells and different subtypes of germ cells inside the seminiferous tubules **from three biological replicates**. Spg, Spermatogonia; Spc, Spermatoocyte; RS, Round Spermatoid; ES, Elongating Spermatoid. Data were presented as mean±SD (n=3). (D) LRRC8A protein expression during postnatal testicular development in mice. Protein lysates from homozygous *Lrrc8a*<sup>F443\*/F443\*</sup> mice testes were used as negative controls. The arrow points to the LRRC8A-specific protein band of expected size, which is absent in the *Lrrc8a*<sup>F443\*/F443\*</sup> lanes. NS, non-specific band. ACTIN serves as an internal control. (E) Representative immunofluorescence (IF) images of LRRC8A in germ cell spreads of the seminiferous tubules by “squash preparation”. LRRC8A protein is present in the plasma membrane of spermatoocytes (Spc) and spermatoids (Spd). Testis from F443\*/F443\* mice were used as negative controls. Bar, 20 μm. (F) LRRC8A protein localization by immunofluorescence in mature sperm from WT and F443\*/F443\* cauda epididymis. LRRC8A is intensively labeled in the midpiece, with weak labeling in the head and



principal piece of mature sperm. Sperm from  $F443^*/F443^*$  cauda served as negative controls. Bar, 5  $\mu\text{m}$ .

**Figure 2. Phenotypic characterization of  $Lrrc8a^{F443^*/F443^*}$  male reproductive tract and sperm.** (A) Gross morphology of testis from WT and  $Lrrc8a^{F443^*/F443^*}$  mice at 6 weeks of age. (B) Comparison of the testis weight between WT and  $Lrrc8a^{F443^*/F443^*}$  mice at 6 weeks and 4 months of age. Data represent the mean $\pm$ SD (n=5 for each genotype, Student's t test). (C) Gross morphology of seminal vesicle, epididymis and testis from WT and  $Lrrc8a^{F443^*/F443^*}$  mice at 8 weeks of age. (D and E) Morphology of sperm retrieved from the cauda epididymis in WT and  $Lrrc8a^{F443^*/F443^*}$  mice. WT sperm typically harbor a "hook" head and straight tail. >95% of sperm from  $Lrrc8a^{F443^*/F443^*}$  cauda display an aberrant morphology, primarily curly midpieces and tails (E) (n=5 for each genotype, Student's t test). Bar, 3  $\mu\text{m}$ . (F) Representative SEM images showing morphology of mature sperm in the cauda epididymis. WT sperm exhibit the typical "hook" sperm head and long, straight tails. Mature sperm in the  $Lrrc8a^{F443^*/F443^*}$  cauda display mostly twisted, curly midpieces or curly tails. Bar, 1  $\mu\text{m}$ . (G) Representative TEM images showing the morphology of mature sperm in the cauda epididymis. Mature sperm in the  $Lrrc8a^{F443^*/F443^*}$  cauda display mostly retroflexed, curly midpieces or curly tails. Note that there is no cytoplasmic mass wrapped around the sperm neck in WT. Bar, 1  $\mu\text{m}$ .

**Figure 3. Histopathology of testis in the  $Lrrc8a^{F443^*/F443^*}$  mice.** (A) Hematoxylin-Eosin (HE) staining of the testicular cross-sections in WT,  $Lrrc8a^{F443^*/F443^*}$  and germ cell-specific

*Lrrc8a* KO (cKO) mice at different time points. Representative stages (indicated in Roman numerals) are shown. Images in the 5<sup>th</sup> column show the HE staining of the cauda epididymis from mice at 8 weeks of age. Arrows point to the vacuoles observed inside the tubules. . Bar, 5  $\mu$ m. (B) Representative TEM images showing the morphology of germ cells inside the testis. Enlarged cytoplasm, disconnected sperm heads and curly tails were observed in sperm from *Lrrc8a*<sup>F443\*/F443\*</sup> and *Lrrc8a* cKO testis. RS, Round Spermatids. ES, Elongating Spermatids. CS, Condensed Spermatids. Nu, Nucleus. Cy, Cytoplasm. The dashed line delineates the nuclear membrane. Bar, 10  $\mu$ m. (C) Statistical comparisons of the ratio of nuclear-to-cytoplasmic (NC) volume for round spermatids (left panel) and elongating spermatids (middle panel) from three male testes among different cohorts of genotypes as indicated (*Student's t test*, n=21 for total number of germ cells calculated in each genotype). The NC ratio represents the ratio of nuclear-to-cytoplasmic volume as estimated from two-dimensional cross-section TEM images using the formula described in methods. The percentages of deformed morphology of condensed spermatids (either curly midpiece or disconnected midpiece) were calculated from three biological testis samples as visualized by TEM among three genotypes (*Student's t test*, n=27 for total number of spermatids calculated in each genotype) (right panel); Data represent the mean $\pm$ SD.

**Figure 4. Diminished activity of VRAC in germ cells of *Lrrc8a*<sup>F443\*/F443\*</sup> males.**

(A and B) Changes in current densities over time recorded at +80 mV (A) or -80 mV (B) in spermatocytes obtained from WT controls and *Lrrc8a*<sup>F443\*/F443\*</sup> mice after switching to

a hypotonic solution (n = 9 in each group). Data represent mean  $\pm$  SEM. (C) Representative current traces in spermatocytes from WT (upper panel) and *Lrrc8a*<sup>F443\*/F443\*</sup> testis (lower panel). Inset, voltage step protocol. (D) Quantification of current densities elicited at +140 mV in spermatocytes from WT and *Lrrc8a*<sup>F443\*/F443\*</sup> mice (n = 13 in each group). Data are shown as mean  $\pm$  SEM. \*, p < 0.001 (Student's t test). (E) Original current traces recorded in different extracellular Cl<sup>-</sup> concentrations in spermatocytes from WT (left panel) and *Lrrc8a*<sup>F443\*/F443\*</sup> (right panel) testes. The voltage was changed from -80 mV to +80 mV with 10 mV increments, each lasting 200 ms with an interval of 1 second. The holding potential was -70 mV. Dashed lines indicate zero current. (F) Current-voltage (I-V) relationships of maximally activated currents. The I-V relationship shows a reversal potential near 0 at equimolar intra- and extracellular Cl<sup>-</sup> of 100 mM. There is a progressive shift to more positive potentials with reduced extracellular Cl<sup>-</sup> from 100 mM to 50 mM and then to 4 mM in spermatocytes from WT testes (n = 10). This shift is absent in spermatocytes from *Lrrc8a*<sup>F443\*/F443\*</sup> testis (MUT, n = 11). Data are presented as mean  $\pm$  SEM.

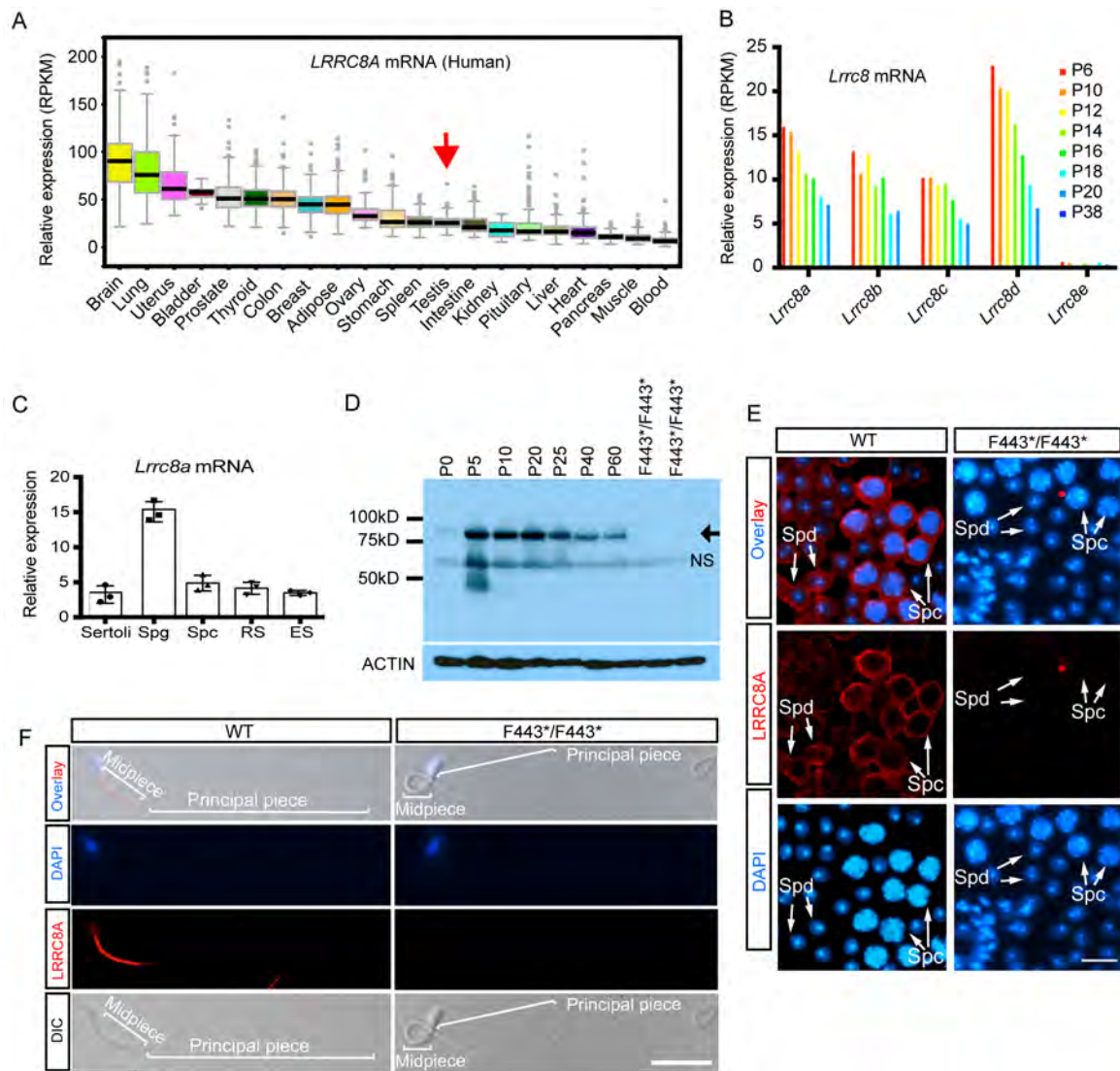
**Figure 5. Constitutive and germline-specific null mutations of *Lrrc8a* cause deformed sperm morphology (MMAF) similar to that of *Lrrc8a*<sup>F443\*/F443\*</sup> mice.** (A) Schematic diagram showing the construct design for making *Lrrc8a*-null alleles [*Lrrc8a*<sup>tm1(KOMP)Vlcr</sup>]. Exons 3 and 4 were fully replaced with a Neo cassette, which is tagged by an upstream LacZ reporter. Sperm carrying this targeted allele were used to fertilize WT oocytes *in vitro*. Fertilized eggs were transferred to pseudo-pregnant females to produce constitutive *Lrrc8a* KO mice (designated as KO). The insertion of the

LacZ/Neo cassette abolished *Lrrc8a* gene expression. (B) Sperm harboring the targeted conditional *Lrrc8a*<sup>flox</sup> allele [*Lrrc8a*<sup>tm1.1(KOMP)Vlcg</sup>], in which the exon 3 is floxed, were purchased from KOMP. *Lrrc8a*<sup>flox/flox</sup> females were used to generate the germline-specific *Lrrc8a* KO (cKO) mice, by breeding with a germline-specific cre line (Stra8-cre) (designated as Stra8-cre; *Lrrc8a*<sup>flox</sup>, cKO). (C) Representative morphology of sperm visualized by phase contrast (top, bar=3 μm) and SEM (bottom, bar=2 μm), retrieved from the cauda epididymis in the WT, *Lrrc8a*<sup>F443\*/F443\*</sup>, KO and cKO mice.

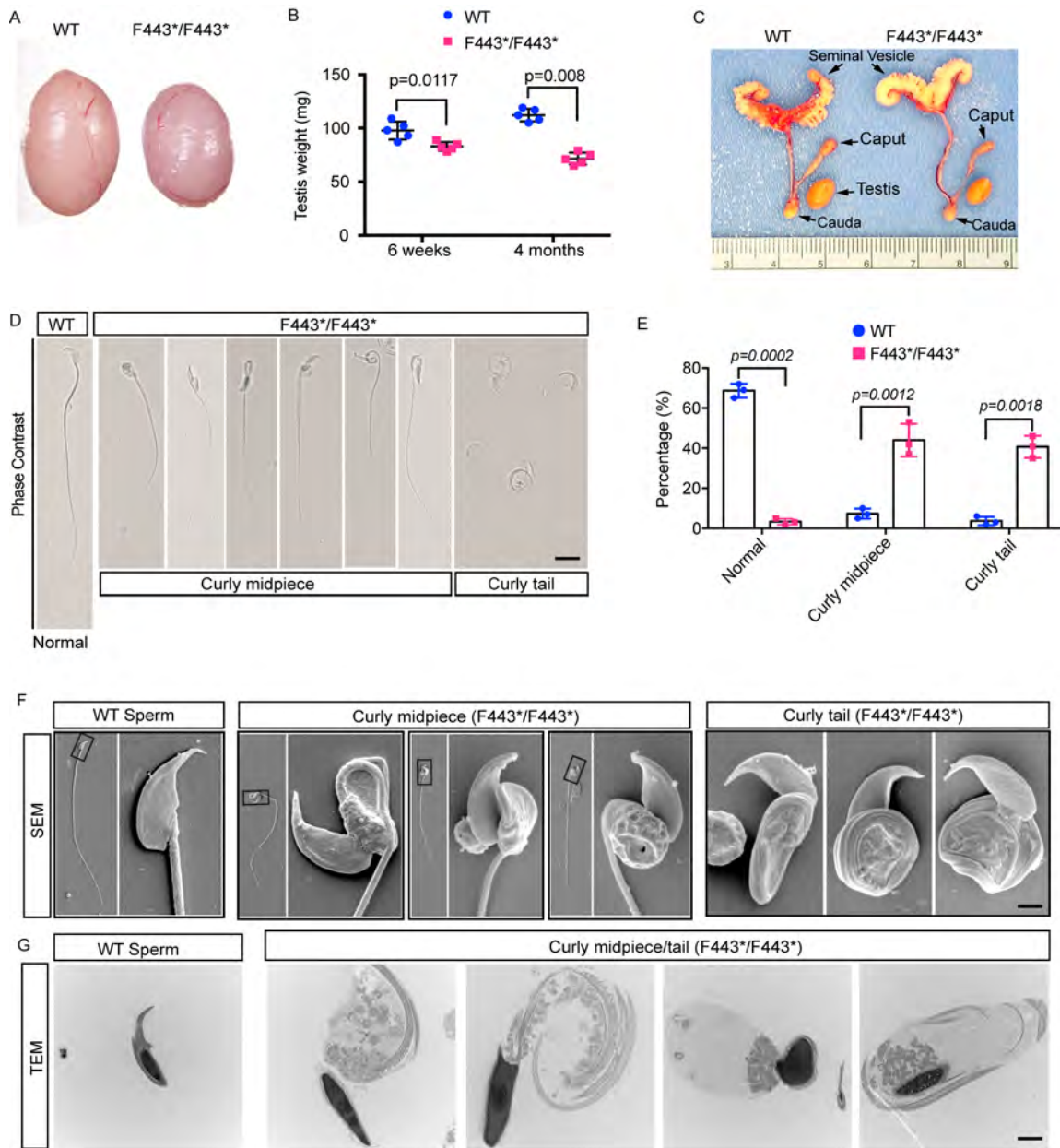
**Figure 6. A hypomorphic mutation (c.1634G>A, R545H) in the *LRRC8A* gene identified in a male sterile patient with Sertoli-cell-only syndrome (SCOS).**

(A) Whole Exome Sequencing (WES) identified a missense point mutation (c.1634G>A, p.Arg545His) in a highly conserved region of *LRRC8A* (top), resulting in the substitution of arginine (R) to histidine (H) (*LRRC8A*<sup>R545H</sup>) (bottom) in a male patient suffering from infertility. (B) Sanger re-sequencing validated the c.1634G>A mutation in this patient. A red rectangle highlights the mutation site. (C) HE staining of testis biopsies from the patient (#90) and a fertile control. Spg, Spermatogonia. Spc, Spermatoocyte. Spd, Spermatid. Bar=15 μm. (D) 3-Dimensional homology modeling of protein structure for WT (top) and mutant *LRRC8A*<sup>R545H</sup> protein (bottom). Note that the R545H mutation altered not only the distribution of LRR domains, but also the topology of the transmembrane structure. The structural prediction was first performed via the Swiss-model server (<https://swissmodel.expasy.org/>) based on homology modeling data deposited in the protein data bank (PDB). Data were compiled and visualized using PyMOL. TM, transmembrane domain. LRRs, Leucine-rich repeats. (E-G) In vitro current recordings in

the *Xenopus* oocyte injection system. In vitro transcribed cRNAs from fluorescently tagged LRRC8 family members as indicated were co-injected into *Xenopus* oocytes. Voltage-clamp traces of oocytes are shown for the co-injections of WT LRRC8A-VFP (8A-VFP) or LRRC8A<sup>R545H</sup>-VFP [8A(R545H)-VFP] with LRRC8C-mCherry (8C-mCh) or LRRC8D-mCherry (8D-mCh) as labeled (E) (n=30). Comparison of the normalized slope conductance induced by co-expressing 8A-VFP and 8A(R545H)-VFP with 8C-mCherry or 8D-mCherry as indicated (F, left panel). Three batches of cRNAs were injected into 15 oocytes for each group in each assay. Representative western blot performed using the same injected oocytes to demonstrate comparable expression levels of the injected cRNAs (F, right panel). Black dots indicate the expected size of fluorescently tagged WT or mutant LRRC8A. Comparison of the normalized slope conductance induced by co-expressing 8A HA-VFP and 8A(R545H) HA-VFP with 8C-mCherry or 8D-mCherry as indicated (G, left panel). ELISA-based luminescence assays utilizing the HA tag illustrated comparable expression of the injected, temdomly tagged cRNAs in the oocyte membranes (G, right panel). Three batches of cRNAs were injected into 15 oocytes for each group in each assay. PM, Plasma membrane expression. Data represent mean  $\pm$  SD of three independent experiments with 3 batches of cRNA preparations. NS, not significant. \*,  $p < 0.05$ . \*\*,  $p < 0.01$  (Student's t test).

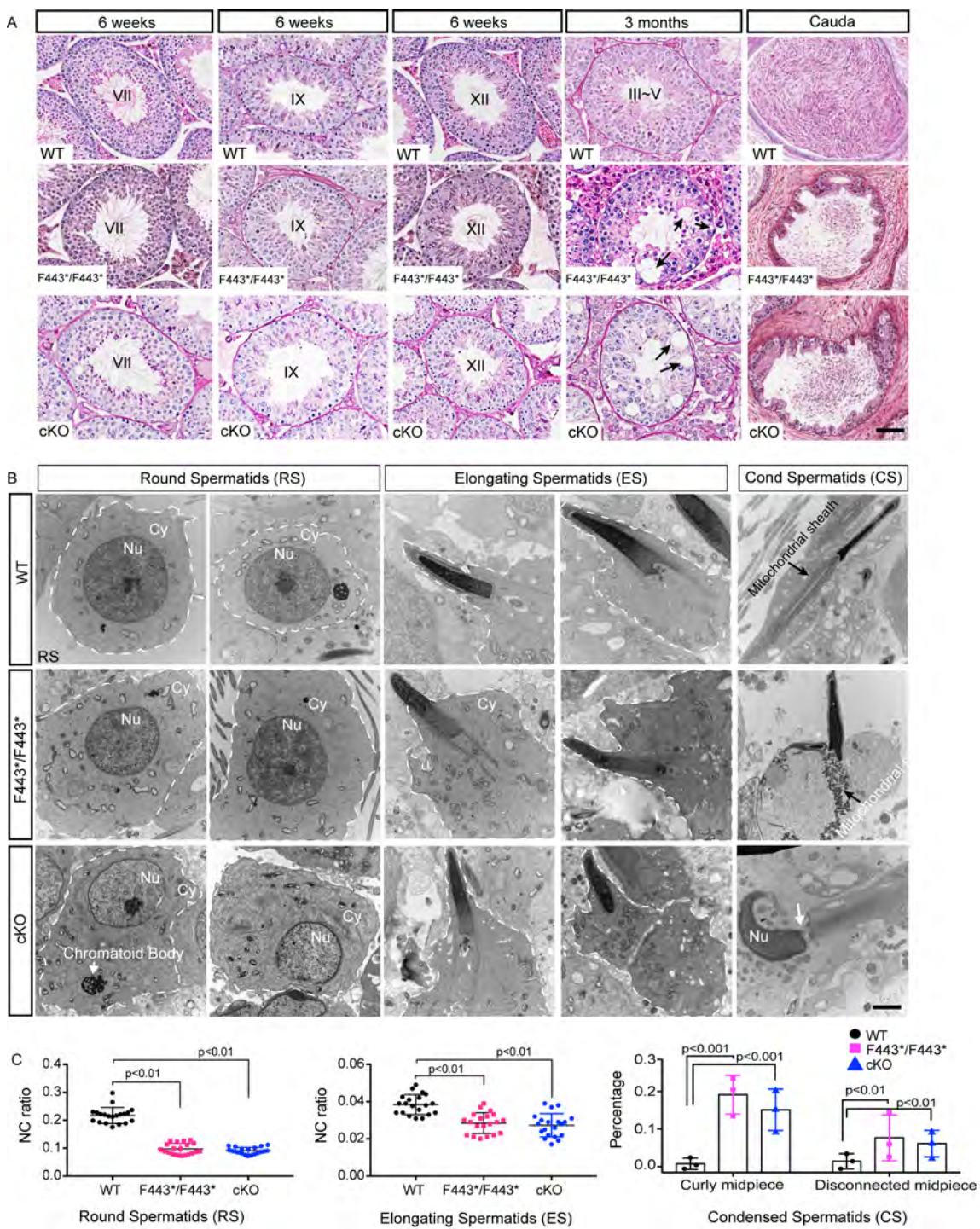


**Figure 1. Expression and localization of LRRC8A.** (A) Relative median expression levels of *LRRC8A* mRNA in different human tissues as detected by RNA-seq according to the GTEx database. Tissues were collected from 570 adult post-mortem individual donors. RPKM, reads per kilobase of transcript per million; (B) Relative mRNA expression levels of *Lrrc8* paralogs (*Lrrc8a-e*) in the developing mouse testis during postnatal development (calculated from GEO accession number GSE44346)<sup>32</sup>. P, Postnatal day. (C) qPCR analysis of *Lrrc8a* mRNA levels among the purified Sertoli cells and different subtypes of germ cells inside the seminiferous tubules **from three biological replicates**. Spg, Spermatogonia; Spc, Spermatoocyte; RS, Round Spermatoid; ES, Elongating Spermatoid. Data were presented as mean±SD (n=3). (D) LRRC8A protein expression during postnatal testicular development in mice. Protein lysates from homozygous *Lrrc8a*<sup>F443\*/F443\*</sup> mice testes were used as negative controls. The arrow points to the LRRC8A-specific protein band of expected size, which is absent in the *Lrrc8a*<sup>F443\*/F443\*</sup> lanes. NS, non-specific band. ACTIN serves as an internal control. (E) Representative immunofluorescence (IF) images of LRRC8A in germ cell spreads of the seminiferous tubules by “squash preparation”. LRRC8A protein is present in the plasma membrane of spermatoocytes (Spc) and spermatoids (Spd). Testis from *F443\*/F443\** mice were used as negative controls. Bar, 20 μm. (F) LRRC8A protein localization by immunofluorescence in mature sperm from WT and *F443\*/F443\** cauda epididymis. LRRC8A is intensively labeled in the midpiece, with weak labeling in the head and principal piece of mature sperm. Sperm from *F443\*/F443\** cauda served as negative controls. Bar, 5 μm.



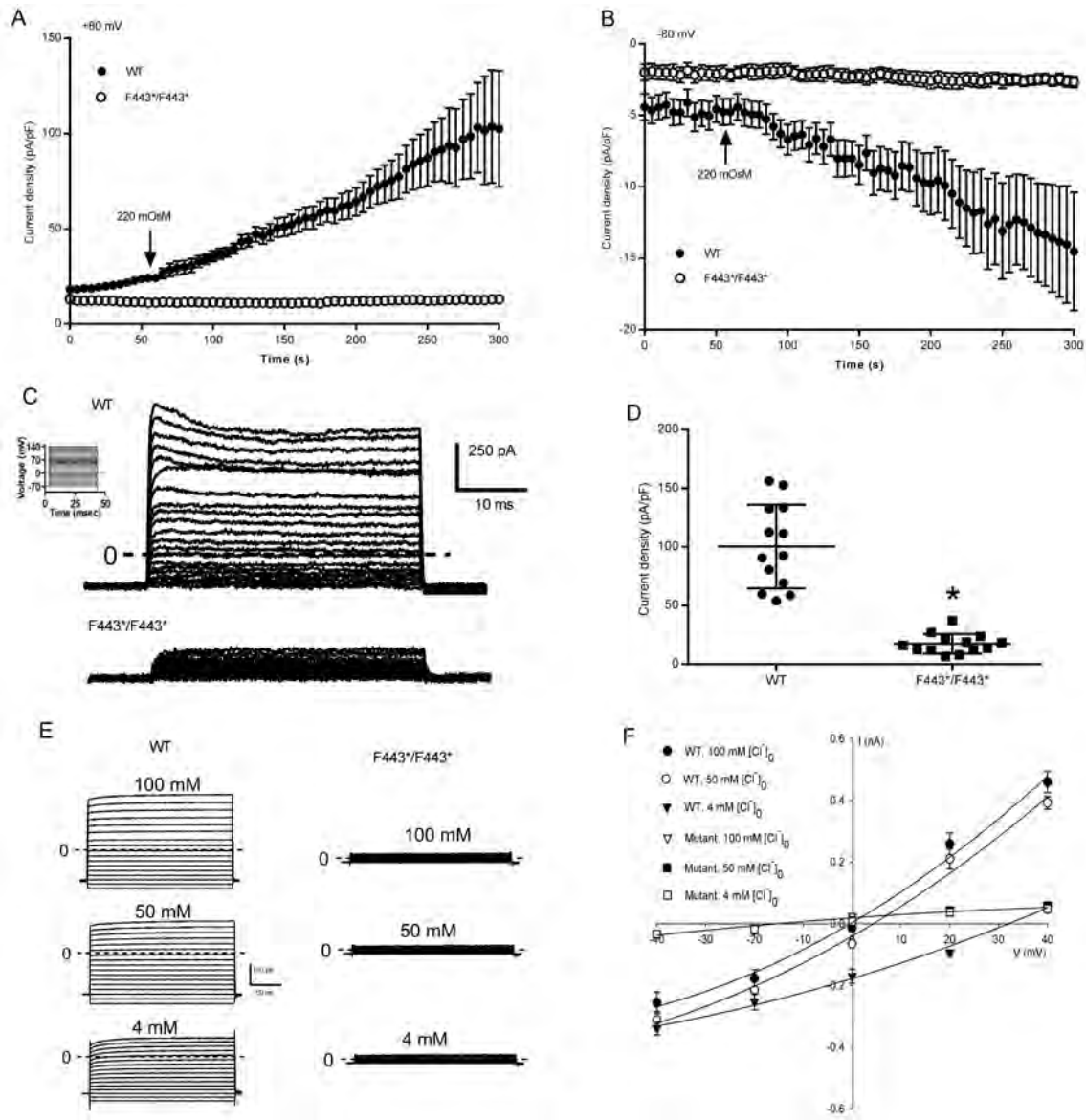
**Figure 2. Phenotypic characterization of *Lrrc8a*<sup>F443\*/F443\*</sup> male reproductive tract and sperm.** (A) Gross morphology of testis from WT and *Lrrc8a*<sup>F443\*/F443\*</sup> mice at 6 weeks of age. (B) Comparison of the testis weight between WT and *Lrrc8a*<sup>F443\*/F443\*</sup> mice at 6 weeks and 4 months of age. Data represent the mean±SD (n=5 for each genotype, Student's t test). (C) Gross morphology of seminal vesicle, epididymis and testis from WT and *Lrrc8a*<sup>F443\*/F443\*</sup> mice at 8 weeks of age. (D and E) Morphology of sperm retrieved from the cauda epididymis in WT and *Lrrc8a*<sup>F443\*/F443\*</sup> mice. WT sperm typically harbor a “hook” head and straight tail. >95% of sperm from *Lrrc8a*<sup>F443\*/F443\*</sup> cauda display an aberrant morphology, primarily curly midpieces and tails (E) (n=5 for each genotype, Student's t test). Bar, 3 μm. (F) Representative SEM images showing morphology of mature sperm in the cauda epididymis. WT sperm exhibit the typical “hook” sperm head and long, straight tails. Mature sperm in the *Lrrc8a*<sup>F443\*/F443\*</sup> cauda display mostly twisted, curly midpieces or curly tails. Bar, 1 μm. (G) Representative TEM images showing the morphology of mature sperm in the cauda epididymis. Mature sperm in the *Lrrc8a*<sup>F443\*/F443\*</sup> cauda display mostly retroflexed, curly midpieces or curly tails. Note that there is no cytoplasmic mass wrapped around the sperm neck in WT. Bar, 1 μm.



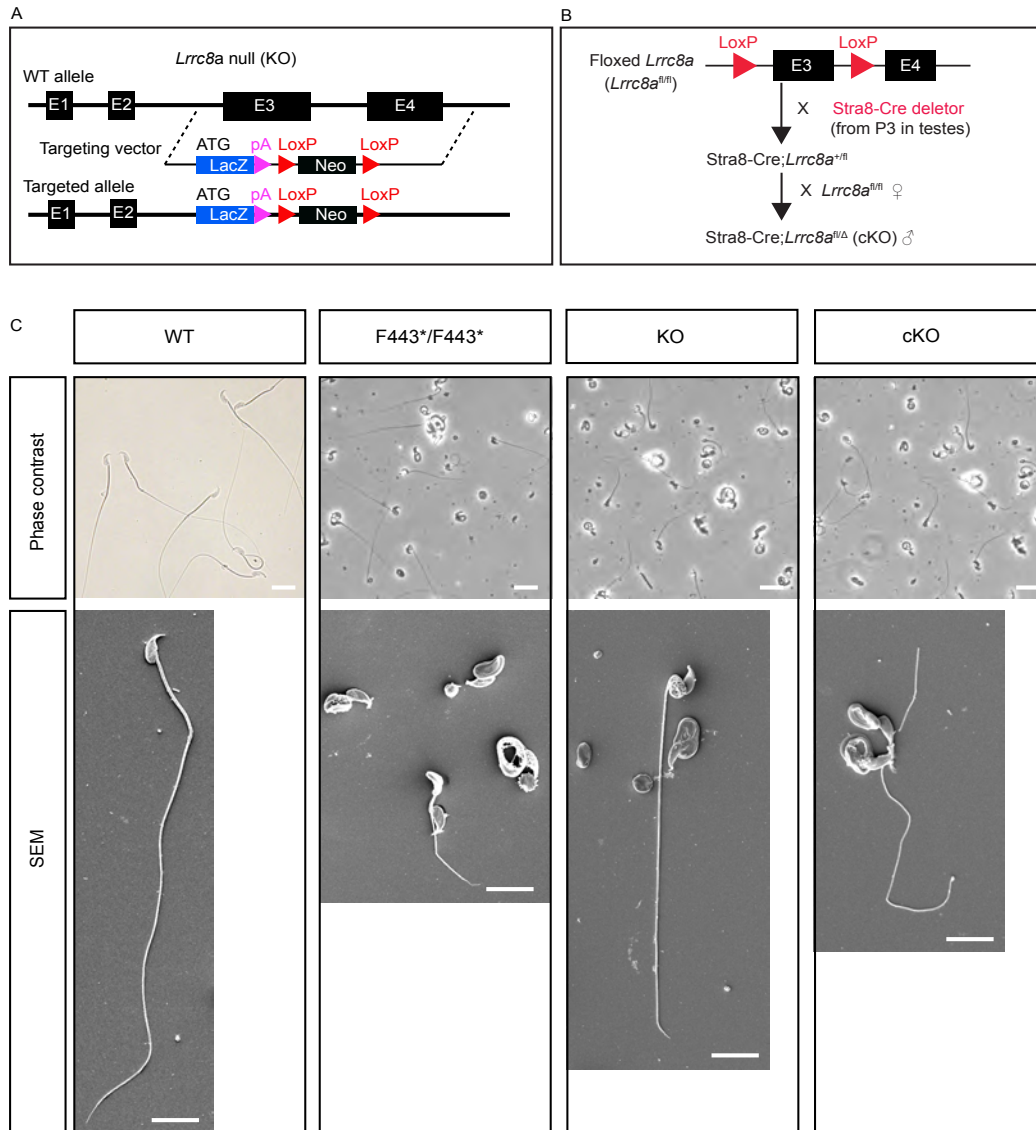


**Figure 3. Histopathology of testis in the *Lrrc8a*<sup>F443<sup>+</sup>/F443<sup>+</sup></sup> mice.** (A) Hematoxylin-Eosin (HE) staining of the testicular cross-sections in WT, *Lrrc8a*<sup>F443<sup>+</sup>/F443<sup>+</sup></sup> and germ cell-specific *Lrrc8a* KO (cKO) mice at different time points. Representative stages (indicated in Roman numerals) are shown. Images in the 5<sup>th</sup> column show the HE staining of the cauda epididymis from mice at 8 weeks of age. Arrows point to the vacuoles observed inside the tubules. Bar, 5  $\mu$ m. (B) Representative TEM images showing the morphology of germ cells inside the testis. Enlarged cytoplasm, disconnected sperm heads and curly tails were observed in sperm from *Lrrc8a*<sup>F443<sup>+</sup>/F443<sup>+</sup></sup> and *Lrrc8a* cKO testis. RS, Round Spermatis. ES, Elongating Spermatis. CS, Condensed Spermatis. Nu, Nucleus. Cy, Cytoplasm. The dashed line delineates the nuclear membrane. Bar, 10  $\mu$ m. (C) Statistical comparisons of the ratio of nuclear-to-cytoplasmic (NC) volume for round spermatis (left panel) and elongating spermatis (middle panel) from three male testes among different cohorts of genotypes as indicated (*Student's t test*, n=21 for total number of germ cells calculated in each genotype). The NC ratio represents the ratio of nuclear-to-cytoplasmic volume as estimated from two-dimensional cross-section TEM images using the formula described in methods. The percentages of deformed morphology of condensed spermatis (either curly midpiece or disconnected midpiece) were calculated from three biological testis samples as visualized by TEM among three genotypes (*Student's t test*, n=27 for total number of spermatis calculated in each genotype) (right panel); Data represent the mean $\pm$ SD.

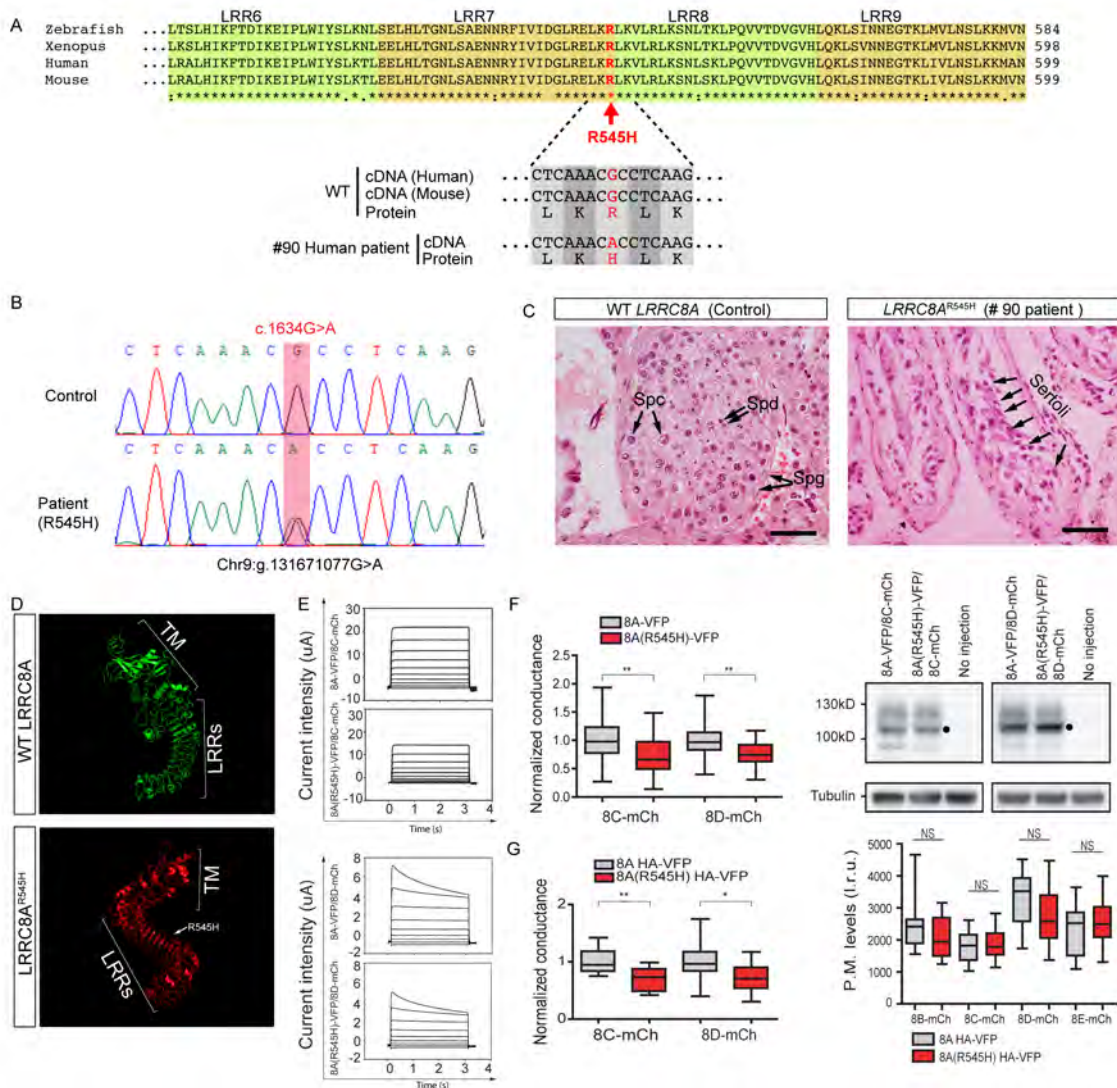




**Figure 4. Diminished activity of VRAC in germ cells of *Lrrc8a*<sup>F443\*/F443\*</sup> males.** (A and B) Changes in current densities over time recorded at +80 mV (A) or -80 mV (B) in spermatocytes obtained from WT controls and *Lrrc8a*<sup>F443\*/F443\*</sup> mice after switching to a hypotonic solution (n = 9 in each group). Data represent mean ± SEM. (C) Representative current traces in spermatocytes from WT (upper panel) and *Lrrc8a*<sup>F443\*/F443\*</sup> testis (lower panel). Inset, voltage step protocol. (D) Quantification of current densities elicited at +140 mV in spermatocytes from WT and *Lrrc8a*<sup>F443\*/F443\*</sup> mice (n = 13 in each group). Data are shown as mean ± SEM. \*, p < 0.001 (Student's t test). (E) Original current traces recorded in different extracellular Cl<sup>-</sup> concentrations in spermatocytes from WT (left panel) and *Lrrc8a*<sup>F443\*/F443\*</sup> (right panel) testes. The voltage was changed from -80 mV to +80 mV with 10 mV increments, each lasting 200 ms with an interval of 1 second. The holding potential was -70 mV. Dashed lines indicate zero current. (F) Current-voltage (I-V) relationships of maximally activated currents. The I-V relationship shows a reversal potential near 0 at equimolar intra- and extracellular Cl<sup>-</sup> of 100 mM. There is a progressive shift to more positive potentials with reduced extracellular Cl<sup>-</sup> from 100 mM to 50 mM and then to 4 mM in spermatocytes from WT testes (n = 10). This shift is absent in spermatocytes from *Lrrc8a*<sup>F443\*/F443\*</sup> testis (MUT, n = 11). Data are presented as mean ± SEM.



**Figure 5. Constitutive and germline-specific null mutations of *Lrrc8a* cause deformed sperm morphology (MMAF) similar to that of *Lrrc8a*<sup>F443\*/F443\*</sup> mice.** (A) Schematic diagram showing the construct design for making *Lrrc8a*-null alleles [*Lrrc8a*<sup>tm1(KOMP)/Vlcg</sup>]. Exons 3 and 4 were fully replaced with a Neo cassette, which is tagged by an upstream LacZ reporter. Sperm carrying this targeted allele were used to fertilize WT oocytes *in vitro*. Fertilized eggs were transferred to pseudo-pregnant females to produce constitutive *Lrrc8a* KO mice (designated as KO). The insertion of the LacZ/Neo cassette abolished *Lrrc8a* gene expression. (B) Sperm harboring the targeted conditional *Lrrc8a*<sup>fl/fl</sup> allele [*Lrrc8a*<sup>tm1.1(KOMP)/Vlcg</sup>], in which the exon 3 is floxed, were purchased from KOMP. *Lrrc8a*<sup>fl/fl/fl</sup> females were used to generate the germline-specific *Lrrc8a* KO (cKO) mice, by breeding with a germline-specific cre line (Stra8-cre) (designated as Stra8-cre; *Lrrc8a*<sup>fl/fl</sup>, cKO). (C) Representative morphology of sperm visualized by phase contrast (top, bar=3  $\mu$ m) and SEM (bottom, bar=2  $\mu$ m), retrieved from the cauda epididymis in the WT, *Lrrc8a*<sup>F443\*/F443\*</sup>, KO and cKO mice.



**Figure 6. A hypomorphic mutation (c.1634G>A, R545H) in the *LRRC8A* gene identified in a male sterile patient with Sertoli-cell-only syndrome (SCOS).** (A) Whole Exome Sequencing (WES) identified a missense point mutation (c.1634G>A, p.Arg545His) in a highly conserved region of *LRRC8A* (top), resulting in the substitution of arginine (R) to histidine (H) (*LRRC8A*<sup>R545H</sup>) (bottom) in a male patient suffering from infertility. (B) Sanger re-sequencing validated the c.1634G>A mutation in this patient. A red rectangle highlights the mutation site. (C) HE staining of testis biopsies from the patient (#90) and a fertile control. Spg, Spermatogonia. Spc, Spermatocyte. Spd, Spermatid. Bar=15  $\mu$ m. (D) 3-Dimensional homology modeling of protein structure for WT (top) and mutant *LRRC8A*<sup>R545H</sup> protein (bottom). Note that the R545H mutation altered not only the distribution of LRR domains, but also the topology of the transmembrane structure. The structural prediction was first performed via the Swiss-model server (<https://swissmodel.expasy.org/>) based on homology modeling data deposited in the protein data bank (PDB). Data were compiled and visualized using PyMOL. TM, transmembrane domain. LRRs, Leucine-rich repeats. (E-G) In vitro current recordings in the *Xenopus* oocyte injection system. In vitro transcribed cRNAs from fluorescently tagged *LRRC8* family members as indicated were co-injected into *Xenopus* oocytes. Voltage-clamp traces of oocytes are shown for the co-injections of WT *LRRC8A*-VFP (8A-VFP) or *LRRC8A*<sup>R545H</sup>-VFP [8A(R545H)-VFP] with *LRRC8C*-mCherry (8C-mCh) or *LRRC8D*-mCherry (8D-mCh) as labeled (E) (n=30). Comparison of the normalized slope conductance induced by co-expressing 8A-VFP and 8A(R545H)-VFP with 8C-mCherry or 8D-mCherry as indicated (F, left panel). Three batches of cRNAs were injected into 15 oocytes for each group in each assay. Representative western blot performed using the same injected oocytes to demonstrate comparable expression levels of the injected cRNAs (F, right panel). Black dots indicate the expected size of fluorescently tagged WT or mutant *LRRC8A*. Comparison of the normalized slope conductance induced by co-expressing 8A HA-VFP and 8A(R545H) HA-VFP with 8C-mCherry or 8D-mCherry as indicated (G, left panel). ELISA-based luminescence assays utilizing the HA tag illustrated comparable expression of the injected, randomly tagged cRNAs in the oocyte membranes (G, right panel). Three batches of cRNAs were injected into 15 oocytes for each group in each assay. PM, Plasma membrane expression. Data represent mean  $\pm$  SD of three independent experiments with 3 batches of cRNA preparations. NS, not significant. \*,  $p < 0.05$ . \*\*,  $p < 0.01$  (Student's t test).