



HAL
open science

LIM-Only Protein FHL2 Is a Negative Regulator of Transforming Growth Factor β 1 Expression

Jennifer Dahan, Florence Levillayer, Tian Xia, Yann Nouët, Catherine Werts, Martine Fanton d'Andon, Minou Adib-Conquy, Anne-Marie Cassard-Doulicier, Varun Khanna, Ju Chen, et al.

► **To cite this version:**

Jennifer Dahan, Florence Levillayer, Tian Xia, Yann Nouët, Catherine Werts, et al.. LIM-Only Protein FHL2 Is a Negative Regulator of Transforming Growth Factor β 1 Expression. *Molecular and Cellular Biology*, 2017, 37 (10), pp.e00636-16. 10.1128/MCB.00636-16 . pasteur-02572332

HAL Id: pasteur-02572332

<https://pasteur.hal.science/pasteur-02572332>

Submitted on 19 May 2020

HAL is a multi-disciplinary open access archive for the deposit and dissemination of scientific research documents, whether they are published or not. The documents may come from teaching and research institutions in France or abroad, or from public or private research centers.

L'archive ouverte pluridisciplinaire **HAL**, est destinée au dépôt et à la diffusion de documents scientifiques de niveau recherche, publiés ou non, émanant des établissements d'enseignement et de recherche français ou étrangers, des laboratoires publics ou privés.



Distributed under a Creative Commons Attribution - NonCommercial 4.0 International License

1 **The LIM-only protein FHL2 is a negative regulator of TGF- β 1 expression**

2 Running title: regulation of TGF- β 1 by FHL2

3 Jennifer Dahan^{1,2}, Florence Levillayer^{1,2}, Tian Xia², Yann Nouët^{1#}, Catherine Werts³, Martine
4 Fanton d'Andon³, Minou Adib-Conquy^{4§}, Anne-Marie Cassard-Doulcier⁵, Varun Khanna⁶, Ju
5 Chen⁷, Thierry Tordjmann⁸, Marie-Annick Buendia^{1#}, Grégory Jouvion⁹ and Yu Wei^{1,2*}

6 ¹ Unité d'Oncogénèse et Virologie Moléculaire, ² Laboratoire de Pathogénèse des Virus de
7 l'Hépatite B, ³ Unité de Biologie et Génétique de la Paroi Bactérienne, ⁴ Unité de recherche
8 cytokines et inflammation, ⁶ Hub Bioinformatique et Biostatistique-C3BI, USR 3756 IP
9 CNRS, ⁹ Unité d'Histopathologie Humaine et Modèles Animaux, Institut Pasteur, 28 rue du
10 Dr. Roux 75015 Paris, ⁵ INSERM U996 Inflammation, Université Paris-Sud, Université Paris-
11 Saclay, 92140 Clamart, ⁸ Inserm U757, Université Paris-Sud, Université Paris-Saclay, 91405
12 Orsay, France. ⁷ Department of Medicine, University of California, San Diego, La Jolla,
13 California 92093-0613, U.S.A.

14 * corresponding author: Institut Pasteur, 28 rue du Dr. Roux, 75015 Paris, France.

15 Phone: (33-1)45688866; fax: (33-1)40613841; email: yu.wei@pasteur.fr

16 # present addresses: Yann Nouët: Roche Pharmaceuticals Division, Building 682, 4070 Basel,
17 Switzerland. Marie-Annick Buendia: Inserm U785, Université Paris-Sud, 94800 Villejuif,
18 France.

19 § We dedicate this paper to Dr. Minou Adib-Conquy who passed away on November 3rd
20 2013.

21 Key words: FHL2, TGF- β 1, transcription regulation, fibrosis

22

23 **Abstract**

24 TGF- β 1 is a master cytokine in many biological processes including tissue
25 homeostasis, epithelial to mesenchymal transition and wound repair. Here we report that the
26 four and a half LIM-only protein 2 (FHL2) is a critical regulator of TGF- β 1 expression.
27 Devoid of DNA-binding domain, FHL2 is a transcriptional co-factor that plays the role of co-
28 activator or co-repressor depending on the cell and promoter contexts. We detected
29 association of FHL2 with the TGF- β 1 promoter, which showed higher activity in *Fhl2*^{-/-} cells
30 than WT cells in a reporter assay. Overexpression of FHL2 abrogates the activation of the
31 TGF- β 1 promoter, whereas the upregulation of TGF- β 1 transcription correlates with reduced
32 occupancy of FHL2 on the promoter. Moreover, ablation of FHL2 facilitates recruitment of
33 RNA polymerase II on the TGF- β 1 promoter, suggesting that FHL2 may be involved in
34 chromatin remodeling in the control of TGF- β 1 transcription. Enhanced expression of TGF-
35 β 1 mRNA and cytokine was evidenced in the liver of *Fhl2*^{-/-} mice. We tested the *in vivo*
36 impact of Fhl2 loss on hepatic fibrogenesis that involves TGF- β 1 activation. *Fhl2*^{-/-} mice
37 developed more severe fibrosis than WT counterparts. These results demonstrate the
38 repressive function of FHL2 on TGF- β 1 expression and contribute to the understanding of
39 TGF- β -mediated fibrogenic response.

40

41

42 INTRODUCTION

43 Transforming growth factor β (TGF- β) family is a multifunctional regulator of cell
44 differentiation, immunity, morphogenesis, tissue homeostasis and repair (1). TGF- β can be
45 released from immune cells, epithelial cells, endothelial cells and fibroblasts. Binding of
46 TGF- β to their receptors activates Smad transcription factors that mediate transcription of
47 TGF- β target genes. Among the three mammal TGF- β isoforms that have distinct biological
48 activities, TGF- β 1 is the strongest inducer of fibrosis. In response to injury, TGF- β 1 is critical
49 for the activation of fibrogenic myofibroblasts, which express α -smooth muscle actin (α -
50 SMA) and secrete extracellular matrix proteins, mostly fibronectin and collagen type I and III.
51 The TGF- β 1 promoter contains AP1 and Sp1 transcription factor regulatory elements and
52 responds positively to TGF- β 1 cytokine and Ras oncoprotein (2-4).

53 The four and a half LIM-only protein 2 (FHL2) is involved in the regulation of various
54 signaling pathways through protein-protein interaction. Thanks to its unique structure
55 composed exclusively of four and a half LIM domains (for lin 11, isl-1 and mec-3), FHL2 has
56 been identified in diverse protein complexes of multiple signaling pathways. In the cytoplasm,
57 FHL2 interacts with integrins and focal adhesion kinases and plays a role in transmission of
58 extracellular matrix (ECM)/integrin receptors-mediated signals (5-7). FHL2 binds to tumor
59 necrosis factor (TNF) receptor-associated factor 6 (TRAF6) and mediates NF- κ B signalling
60 pathway (8). In the nucleus, FHL2 interacts with a diverse group of DNA binding factors to
61 control a broad range of transcription programs including β -catenin/TCF, AP1 and androgen
62 receptor (9-12).

63 Accumulating evidence indicates that the effects of FHL2 in the cell are different,
64 even opposite, depending on the cell type and environment. In osteoclasts, FHL2 inhibits
65 TRAF6-induced NF- κ B activation (8), whereas FHL2 potently enhances NF- κ B activity in

66 epithelial cells (13). Similarly, interaction of FHL2 with β -catenin in myoblasts results in
67 inhibition of β -catenin-mediated activation of a TCF/LEF-dependent reporter gene (10),
68 whereas the same reporter was strongly activated by FHL2 in epithelial cancer cell lines (12).
69 *In vivo* experience showed that injection of FHL2 into *Xenopus* embryos suppressed β -
70 catenin-induced axis duplication (10), while enhanced expression of FHL2 in hepatocytes
71 promoted liver tumorigenesis by activation of the Wnt/ β -catenin signaling (14).

72 FHL2 is intimately linked to the TGF- β signaling pathway at different levels. FHL2
73 acts as a co-activator of Smad proteins including Smad2, Smad3, Smad4 and plays a role to
74 stabilize the E3 ligase Arkadia in enhancing TGF- β signaling (15, 16). Moreover, FHL2 is a
75 target of TGF- β , responding positively to TGF- β stimulation in a Smad4 independent manner
76 (17, 18). In human melanoma and colon cancer, enhanced expression of FHL2 is correlated
77 with an increase of TGF- β , which prognosticates invasion, metastasis and poor survival (18-
78 20).

79 Here we report a new aspect of relationship between FHL2 and TGF- β in which
80 deficiency of FHL2 up-regulates TGF- β 1 expression. In *Fhl2*^{-/-} mice, enhanced TGF- β 1
81 expression results in severe fibrosis in experimental models for liver fibrogenesis.

82 MATERIALS AND METHODS

83 Animals and fibrosis induction

84 *Fhl2*^{-/-} mice on Black Swiss-129-SV/J background (21) were backcrossed into
85 C57BL/6J mice over more than eight generations. All animals were hosted in a pathogen-free
86 environment at the Institut Pasteur animal facility and received human care according to the
87 criteria outlined in the “Guide for the Care and Use of Laboratory Animals”.

88 Animal experiments were carried out according to the European Commission
89 directives for animal experimentation (Decree 2001-131, ‘Journal Officiel’ February 06,
90 2001). Bile duct ligation (BDL) was performed on 6 WT and 7 *Fhl2*^{-/-} mice (8-12 weeks old)
91 by certificated researchers. Mice were sacrificed 15 days post-operation. Livers were removed
92 and either fixed in paraformaldehyde (PFA) 4% for staining or frozen for RNA extraction. 10⁷
93 bioluminescent *Leptospira interrogans* were used to infect five WT and five *Fhl2*^{-/-} 8-week-
94 old mice by intraperitoneal (i.p.) injection in 200 µl of PBS as described previously (22).
95 Mice were sacrificed 21 days postinfection. These experiments were repeated twice. Kidneys
96 from infected and naive mice were removed and fixed in PFA 4% for staining. The
97 experimental procedures have been approved by the Institut Pasteur ethic committee (#2013-
98 0034).

99 RNA analysis

100 Total RNA was extracted from 10 *Fhl2*^{-/-} and 10 WT mice using TRIZOL
101 (Invitrogen) from liver, lung, heart, spleen and kidney after tissue homogenization. 1 µg of
102 RNA was reverse-transcribed using random primers (Promega) and cDNA was generated
103 using RevertAid H Minus Reverse Transcriptase (Thermo Fisher Scientific). The relative
104 levels of mRNAs were determined by real-time PCR using Fast Start Universal SYBR Green
105 (Roche). The mean copy number of each gene from a triplicate determination was normalized

106 to the mean copy number of hypoxanthine-guanine phosphoribosyltransferase (HPRT). The
107 following primers were used for real-time PCR: human FHL2: 5'-
108 GGCTGAGAACTGTGTCTTCC-3', 5'-ACAAGTCCTTGCAAGTACAG-3', murine FHL2:
109 5'-GTCCTACAAGGATCGGCACT-3', 5'-ACAGGTGAAGCAGGTCTCGT-3', HPRT: 5'-
110 ATGCCGAGGATTTGGAAAAA-3', 5'-ACAATGTGATGGCCTCCCA-3', murine TGF-
111 β 1: 5'-GCGTATCAGTGGGGGTCA-3', 5'-GTCAGACATTCGGGAAGCAG-3', murine
112 TGF- β 2: 5'-GCAGATCCTGAGCAAGCTG-3', 5'-GTAGGGTCTGTAGAAAGTGG-3',
113 murine TGF- β 3: 5'-AGCGCAGACACAACCCATAG-3', 5'-
114 ACACGACTTCACCACCATGT-3', murine Colla1: 5'-GACCAGGAGGACCAGGAAGT-
115 3', 5'-GAAACCCGAGGTATGCTTGA-3', murine Timp1: 5'-
116 GTCACTCTCCAGTTTGCAAG-3', 5'-GACCACCTTATACCAGCGTT-3'.

117 **Cytokine assay**

118 Kupffer cells were isolated from WT and *Fhl2*^{-/-} animals as described previously (23).
119 10⁶ cells were plated in RPMI supplemented with 10% FCS and 1% penicillin/streptomycin
120 for 24 hours. Active form of TGF- β 1 was measured in supernatants by ELISA as specified by
121 the manufacturer (R&D Systems, Minneapolis, MN).

122 **Cell culture, reagents and reporter assay**

123 293T, HeLa cells, mouse embryonic fibroblasts (MEF), HepG2 and Huh7 cells were
124 cultured in Dulbecco's modified Eagle's medium (DMEM) with 10% fetal bovine serum
125 (FBS). *Fhl2*^{-/-} MEFs were reported previously (24). Human FHL2 gene was cloned in the
126 retroviral pBabe-puromycin vector. Phoenix ecotropic virus packaging cells were transfected
127 with either pBabe-empty or pBabe-hFHL2 and virus-containing supernatant was collected. To
128 restore FHL2 expression in *Fhl2*^{-/-} MEFs, *Fhl2*^{-/-} MEFs were transduced with virus-containing

129 supernatant supplemented with 8 µg/ml polybrene. Cells were selected with 4 µg/ml
130 puromycin.

131 The 1.6 kb fragment encompassing 800 bp upstream and 800 bp downstream of the
132 transcription initiation site of murine TGF-β1 gene was synthesized by Eurofins MWG
133 Operon. For reporter assays, 3X10⁵ *Fhl2*^{-/-}, WT MEFs, 293T cells were plated in six-well
134 plates and transfected using Lipofectamine 2000 (Invitrogen) with luciferase reporter
135 containing the murine TGF-β1 promoter (0.05 µg). Luciferase activity was determined 48 h
136 later using The Dual-Glo® Luciferase Assay System (Promega). A renilla plasmid under the
137 control of thymidine kinase was used as internal control and the total DNA amount in each
138 transfection was kept constant by adding empty vector plasmid. All experiments were
139 performed in duplicate and repeated at least three times.

140 To test the effects of FHL2 on the TGF-β1 promoter, MEFs and 293T cells were co-
141 transfected with 0.2 µg, 0.8 µg of plasmid expressing human FHL2 or empty vector and the
142 murine TGF-β1 promoter reporter -800/+510. 36 h later, cells were treated with 10 µM
143 SB431542 (Sigma) for 16 h to inhibit the effects of endogenous TGF-β (25) followed by
144 induction for 1 h with human TGF-β1 (2 ng/ml) (PeproTech) and then collected for luciferase
145 activity assay.

146 Putative transcription factor binding sites were searched in sequences 800 bp upstream
147 and 800 bp downstream of the TGF-β1 transcription start site, using PROMO (26) with
148 dissimilarity of 10%. Transcription factor recognition sites with a length shorter than five
149 nucleotides were not taken into account.

150 **Chromatin immunoprecipitation (ChIP) assay**

151 ChIP was performed as described previously (24). To investigate the association of
152 FHL2 on the murine or human TGF- β 1 promoter, MEFs, HeLa, HepG2 or Huh7 cells were
153 used for ChIP assays with anti-FHL2 (MBL, c-76204). HeLa, HepG2 or Huh7 cells were
154 treated with 10 μ M SB431542 for 16 h followed by induction for 1 h or 5 h with human TGF-
155 β 1 (2 ng/ml) and then were subjected to ChIP-qPCR assay. Because *Tgfb1* promoter region
156 contains highly GC-rich sequences, only two pairs of primers among ten pairs of primers
157 tested were able to amplify the murine TGF- β 1 promoter by quantitative PCR (Fig. 2A).
158 Their sequences are: (I) 5' - ATGGAGTGGAGTGTGAGGG - 3'; 5' -
159 CTTGCAGTCCATGGCATAGG - 3' and (II) 5'- CTATGCCATGGACTGCAAGG -3'; 5' -
160 GAGGCACCTTACCCATGAGA -3'. Two pairs of primers were used to amplify the human
161 TGF- β 1 promoter by quantitative PCR: 1) 5'-GGCAGTTGGCGAGAACAGT-3', 5'-
162 CTGGGGTCAGCTCTGACAGT-3'; 2) 5'-TGGGAGGTGCTCAGTAAAGG-3', 5'-
163 ACCCAGAACGGAAGGAGAGT-3'. To examine the effect of FHL2 on chromatin
164 accessibility, *Fhl2*^{-/-} and WT MEFs were used for ChIP assays with anti-RNA polymerase II
165 antibodies (Santa Cruz Biotechnology, sc-9001X). Immunoprecipitated chromatin was
166 amplified with the primers I and II by qPCR.

167 **Immunohistochemistry and Immunoblotting**

168 Immunohistochemistry (IHC) was performed on PFA-fixed paraffin-embedded
169 sections as previously described (14). Briefly, tissues were dewaxed in xylene and unmasked
170 in a citric acid solution. After blocking with normal horse serum, sections were incubated
171 with primary antibody against α -smooth muscle actin, (Sigma, A5228). Endogenous
172 peroxidase activity was blocked by incubating sections with 3% hydrogen peroxide. The
173 sections were then incubated with secondary antibodies (Vector Laboratories) for 30 min. The
174 peroxidase reaction was developed using DAB Substrate Kit (SK-4100, Vector Laboratories).

175 A combination of hematoxylin and eosin was used for counterstaining. For Sirius red staining,
176 after deparafination and rehydration, tissue sections were labeled for 30 min with a solution
177 of 0.1% (W/V) Sirius red in saturated picric acid. For fibrosis quantification, Sirius Red/Fast
178 Green Collagen Staining Kit (Amsbio, #9046) was used.

179 To test the effects of FHL2 on the downstream effectors of TGF- β signaling and FHL2
180 expression in cells, protein lysates were prepared from liver tissues and MEFs and 293T cells
181 as described previously (13). Protein extract was subjected to electrophoresis on NuPAGE 4-
182 12% Bis-Tris Gel (Invitrogen, NP0323BOX) in NuPAGE MOPS SDS Running Buffer
183 (Thermo Fisher Scientific, NP000102). The following antibodies were used for
184 immunoblotting analysis: Smad2/3 (Cell Signaling, 8685S), phosphorylated Smad2/3 (Cell
185 Signaling, 8828S), Ski (Santa Cruz, sc-33693), SnoN (Santa Cruz, sc-9141), FHL2, actin
186 (Sigma, MA1-744) and glyceraldehyde-3-phosphate dehydrogenase (GAPDH) (Cell
187 Signaling, 2118S).

188 **Statistic analysis**

189 Statistic analysis was performed by Mann-Whitney U test.

190

191 **RESULTS**

192 **Deficiency of FHL2 increases TGF- β expression**

193 Previous studies have pointed to an important role of FHL2 in cooperation with
194 several components of the TGF- β signaling pathway to enhance TGF- β signaling (15, 16). To
195 investigate the effects of FHL2 on the expression of TGF- β , we examined TGF- β 1 cytokine
196 production in liver resident macrophage Kupffer cells derived from *Fhl2*^{-/-} animals, because
197 Kupffer cells are the major source of TGF- β 1, which is the most important member of TGF- β
198 family in the liver (27). We previously reported that FHL2 is expressed in Kupffer cells (13).
199 We isolated Kupffer cells from WT and *Fhl2*^{-/-} animals and cultured them *in vitro* for 24 h.
200 The active form of TGF- β 1 cytokine in the supernatant was measured by ELISA.
201 Remarkably, *Fhl2*^{-/-} Kupffer cells expressed significantly higher levels of TGF- β 1 than WT
202 cells (Fig. 1A). To assess if the upregulation of TGF- β 1 expression is at the transcription level
203 and to have a broad view of *FHL2* deficiency on the expression of three TGF- β isoforms, we
204 extracted RNA from different tissues including liver, kidney, lung, spleen and heart derived
205 from *Fhl2*^{-/-} and WT mice and examined TGF- β 1, TGF- β 2 and TGF- β 3 mRNA by qPCR. As
206 shown in Fig. 1B, transcription of the TGF- β 1 gene was significantly upregulated in the liver
207 but not in the other organs from *Fhl2*^{-/-} mice. Expression of TGF- β 2 and TGF- β 3 showed no
208 difference in all the organs analyzed except the heart where the mRNA levels of TGF- β 2 and
209 TGF- β 3 were decreased in *Fhl2*^{-/-} mice. We then examined if FHL2 deficiency could have
210 impact on the expression of TGF- β targets in the liver where FHL2 is weakly expressed in
211 hepatocytes (14). TGF- β induces phosphorylation of Smad2/3 and degradation of the
212 transcription repressors Ski and SnoN (28). Protein lysates prepared from WT and *Fhl2*^{-/-}
213 livers were analyzed for expression of Smad2/3, SnoN and Ski and phosphorylation of

214 Smad2/3. Besides individual heterogeneity, no significant difference was observed for P-
215 Smad2/3, SnoN and Ski between WT and *Fhl2*^{-/-} mice (Fig. 1C).

216 **FHL2 is present in transcriptional complexes on the TGF- β 1 promoter**

217 We focused the study on the liver where FHL2 deletion appeared to create a condition
218 that promotes specifically TGF- β 1 expression at the transcription level. To explore how
219 FHL2 is involved in TGF- β 1 regulation, we first synthesized the genomic fragment
220 comprising 800 bp upstream and 800 bp downstream of the transcription start site of mouse
221 TGF- β 1 gene and constructed a series of deletion fragments into the firefly luciferase reporter
222 vector for fine mapping the region containing promoter activity (Fig. 2A). The fusion
223 fragments were transiently transfected in 293T cells and luciferase activities were determined
224 after normalization to the expression of a control reporter. As shown in Fig. 2B, the fragment
225 -190 to +340 displayed the highest level in luciferase activity, which is in agreement with a
226 previous report (2). Potential binding sites of numerous transcription factors were identified in
227 the sequence encompassing -800 to +800 of the TGF- β 1 gene using the program PROMO
228 (26) (Supplementary file 1). Notably, sequences recognized by the AP-1 complex components
229 c-Jun and c-Fos are localized in multiple regions of the promoter. AP1 binding sites were also
230 identified in the human TGF- β 1 promoter (29).

231 To determine whether the TGF- β 1 gene is a direct transcriptional target of FHL2, we
232 carried out quantitative chromatin immunoprecipitation (ChIP-qPCR) assays to examine the
233 potential association of FHL2 with the TGF- β 1 promoter. Absent of DNA-binding domain,
234 FHL2 could be part of transcription regulatory complexes linking to the promoter through
235 transcription factors. For ChIP assay, WT MEFs were cross-linked with formaldehyde and
236 protein-DNA complexes were immunoprecipitated with anti-FHL2 antibody or control IgG.
237 *Fhl2*^{-/-} MEFs were used as negative control cells. Analysis by qPCR of immunoprecipitated
238 chromatin with two pairs of primers (see Fig. 2A and Materials and Methods) revealed the

239 association of FHL2 with the TGF- β 1 promoter (Figs. 2C and 2D). To prove that FHL2 is
240 also linked to the human TGF- β 1 promoter which shares 66% nucleotide identify with murine
241 TGF- β 1 promoter (2), we performed ChIP-qPCR in HeLa cells and two hepatic cell lines
242 HepG2 and Huh7. Using chromatin immunoprecipitated by FHL2 antibody as template,
243 quantitative PCR analysis with two pairs of primers specific to human TGF- β 1 promoter
244 successfully amplified the promoter region (Figs. 2E and 2F). Interestingly, when cells were
245 treated with TGF- β 1 cytokine, which is known to induce TGF- β 1 transcription (4), FHL2
246 occupancy on the promoter of TGF- β 1 was significantly reduced (Figs. 2E and 2F),
247 suggesting that FHL2 exerts a repressive effect on the promoter of TGF- β 1. These results
248 indicate that the TGF- β 1 promoter is a direct target of FHL2.

249 **FHL2 negatively regulates the TGF- β 1 promoter**

250 The upregulated expression of TGF- β 1 in *Fhl2*-deficient cells boded for the repressor
251 effect of FHL2 on the TGF- β 1 promoter. To test it, we carried out TGF- β 1 luciferase reporter
252 assay in WT or *Fhl2*^{-/-} MEFs. Remarkably, the activity of all the reporters except -800/-150
253 was significantly increased in *Fhl2*^{-/-} MEFs compared to WT MEFs (Fig. 3A). To further link
254 the suppressive effect to FHL2, we restored FHL2 expression in *Fhl2*^{-/-} MEFs with human
255 FHL2 (*FHL2*-r) (Figs. 3B and 3C). We tested the activity of the reporter -800/+510 in *Fhl2*^{-/-},
256 *FHL2*-r and WT MEFs treated with TGF- β cytokine. As shown in Fig. 3D, the reporter
257 activity was inversely correlated with the levels of FHL2 expression *Fhl2*^{-/-}, *FHL2*-r and WT
258 cells in the presence and absence of TGF- β cytokine, indicating that the repressive effect of
259 FHL2 on the TGF- β 1 promoter is dose-dependent. But this dose-dependency of FHL2 was
260 not linear as transfection of 0.2 μ g and 0.8 μ g of plasmid expressing FHL2 in *FHL2*-r cells
261 (Figs. 3B and 3C) did not further repress the promoter activity (Fig. 3D). On the other hand,
262 the promoter activity in *FHL2*-r cells was not significantly augmented by TGF- β cytokine

263 treatment compared to untreated FHL2-r cells, while it was even higher in untreated WT
264 MEFs than treated WT MEFs (Fig. 3D). TGF- β cytokine acts on diverse regulatory elements
265 of the TGF- β 1 promoter of which FHL2 is a part. TGF- β cytokine can inhibit FHL2
266 association with the TGF- β 1 promoter, thus relieving the repressive function of FHL2 (see
267 Figs. 2E and 2F). The ultimate activity of the TGF- β 1 promoter under the stimulation of
268 TGF- β cytokine, however, depends on the sum of the actions of the diverse regulatory
269 elements to which FHL2 makes contribution.

270 Next, we examined the effects of FHL2 on TGF- β 1 promoter in 293T cell line. When
271 293T cells were subjected to the treatment with TGF- β cytokine, the activity of the reporter -
272 800/+510 was modestly but significantly activated (Fig. 3E). This activation was blunted by
273 overexpression of FHL2 (Figs. 3C and 3E). Overexpression of human FHL2 did not have
274 effect on the promoter activity without TGF- β 1 stimulation (Fig. 3E), suggesting that in the
275 steady-state condition, endogenous FHL2 may not be the limiting factor. Taken together,
276 these results indicate that FHL2 is a negative regulator of the TGF- β 1 promoter in both
277 murine and human cells.

278 To further decipher the mechanisms of the negative regulation of the TGF- β 1
279 promoter by FHL2, we used WT and *Fhl2*^{-/-} MEFs to carry out ChIP-qPCR assays with
280 antibody against RNA polymerase II (Pol II), which transcribes all the protein-coding genes.
281 The primers I and II were employed for qPCR to amplify the endogenous TGF- β 1 promoter
282 using chromatin immunoprecipitated with anti-Pol II antibody as template (see Fig. 2A). The
283 recruitment of Pol II to the TGF- β 1 promoter was significantly increased in *Fhl2*^{-/-} MEFs in
284 comparison to WT cells (Figs. 4A and 4B). These data suggest that loss of FHL2 may alter
285 chromatin architecture to allow Pol II to gain access to the TGF- β 1 promoter.

286 ***Fhl2*^{-/-} mice show increased susceptibility to fibrogenesis in the liver**

287 TGF- β 1 is considered the most powerful mediator of fibrogenesis. The high
288 expression level of TGF- β 1 in *Fhl2*^{-/-} liver suggested that *Fhl2*^{-/-} mice might be pro-
289 fibrogenic. We subjected *Fhl2*^{-/-} and WT mice to bile duct ligation (BDL) operation, which is
290 widely used model for liver fibrosis through cholestatic liver injury (30). We sacrificed mice
291 15 days after BDL. Livers derived from BDL-treated mice lacking FHL2 developed severe
292 fibrosis when compared to WT animals, showing wider fibrotic scars and substantially more
293 scar branching as assessed by staining with hematoxylin-eosin and Sirius red, which directly
294 marks the extracellular matrix deposited by activated hepatic stellate cells (HSC) (Figs. 5, A-
295 C, E-G, I-K, M-O and Q). Moreover, FHL2 KO livers harbored a large increase in activated
296 HSCs as determined by α -smooth muscle actin (α -SMA) staining (Figs. 5D, H, L and P). We
297 further confirmed our findings in a second well-established model of liver fibrosis induced by
298 thioacetamide (TAA) administration. *Fhl2*^{-/-} mice showed increased fibrosis after 20 weeks of
299 TAA treatment (data not shown). These results are in agreement with a previous report
300 showing enhanced fibrosis in *Fhl2*^{-/-} mice using carbon tetrachloride (CCl₄)-induced model of
301 liver fibrosis (31).

302 To investigate the molecular characteristics of fibrosis developed in *Fhl2*^{-/-} liver, we
303 examined expression by qRT-PCR of fibrogenesis markers including alpha-1 type I collagen,
304 tissue inhibitor of metalloproteinases-1 (TIMP1) and TGF- β 1 encoded respectively by
305 *Colla1*, *Timp1* and *Tgfb1* genes, in the liver of *Fhl2*^{-/-} and WT mice 15 days after BDL or
306 control mice. This analysis revealed that expression of *Colla1* and *Timp1* was activated after
307 BDL in both *Fhl2*^{-/-} and WT mice (Fig. 6). Moreover, the levels of *Colla1* and *Timp1*
308 activation following BDL were significantly higher in *Fhl2*^{-/-} liver than those in WT liver,
309 correlating with the aggravated fibrosis in *Fhl2*^{-/-} mice (Fig. 6).

310 In accordance with the results in Fig. 1B, the mRNA level of TGF- β 1 in the liver was
311 higher in *Fhl2*^{-/-} mice than WT mice at the steady-state condition (Fig. 6). Transcription of

312 TGF- β 1 was significantly enhanced in fibrotic liver compared to control liver in both *Fhl2*^{-/-}
313 and WT mice (Fig. 6). Moreover, livers from *Fhl2*^{-/-} animals displayed higher levels of TGF-
314 β 1 mRNA following BDL treatment compared to WT counterparts (Fig. 6), demonstrating
315 that fibrogenic signaling was enhanced in the livers from *Fhl2*^{-/-} animals. Of note, FHL2
316 expression was upregulated in fibrotic liver of WT mice (Fig. 6), which is correlated with
317 previous observations in human liver fibrosis (14, 31). Therefore, ablation of FHL2 leads to
318 increased level of TGF- β 1 and enhanced susceptibility to fibrogenesis.

319 **FHL2 deficiency has no effect on renal fibrosis**

320 A previous report showed that *Fhl2*^{-/-} mice developed stronger fibrotic alterations in
321 bleomycin-induced model for lung fibrosis following an unresolved inflammation (32). To
322 test if FHL2 deficiency had a broad effect on fibrogenesis, we chose to examine fibrogenesis
323 in the kidney, as FHL2 plays roles in the development of kidney disease (33). We used the
324 bacteria *Leptospira* infection model for renal fibrosis (22) and infected age- and sex-matched
325 WT and *Fhl2*^{-/-} mice with equal amounts of bacteria *Leptospira* expressing luciferase. All the
326 mice were successfully infected in the kidney, as attested by *in vivo* imaging (data not
327 shown). After 21 days, kidneys were examined for fibrosis using Sirius red staining and
328 expression of TGF- β 1. As shown in Figs. 7A-7P, bacteria *Leptospira* induced fibrosis in the
329 kidney in both WT and *Fhl2*^{-/-} mice. But no significant difference in the accumulation of
330 fibrotic tissue was observed between WT and *Fhl2*^{-/-} animals (Fig. 7Q). Analysis of TGF- β 1
331 expression by qPCR showed no change in mRNA after bacteria infection between WT and
332 *Fhl2*^{-/-} mice (Fig. 7R). These results attest the tissue-dependent feature in TGF- β 1 activation
333 and fibrogenesis associated with FHL2 deficiency.

334 **DISCUSSION**

335 Given the importance of TGF- β 1 in many biological processes, it is fundamental to
336 understand the mechanisms controlling its expression. In this report, we show that FHL2 acts
337 as an important negative regulator of TGF- β 1 transcription. The action of FHL2 in inhibiting
338 TGF- β 1 transcription is likely to involve both direct and indirect mechanisms.

339 Previous studies demonstrate that the effects of FHL2 on transcription can be positive
340 or negative depending on the gene target and the cellular context (10, 34). Associated with the
341 TGF- β 1 promoter, FHL2 plays the role of co-repressor in the transcription of the TGF- β 1
342 gene. We show that overexpression of FHL2 inhibits the activity of TGF- β 1 promoter,
343 whereas ablation of FHL2 increases its transcription. The inhibition of TGF- β 1 promoter by
344 FHL2 is dose-dependent, suggesting that the repressive activity could be intrinsic to FHL2 or
345 FHL2-associated factors with repressive functions. The transcription factors with which
346 FHL2 interacts on the TGF- β 1 promoter remain to be determined. Our search of transcription
347 factor binding sites on the TGF- β 1 promoter has identified multiple responsive elements
348 recognized by Fos and Jun, which are known FHL2-associated transcription factors (11).
349 FHL2 could act through Jun and Fos to inhibit the transcription of TGF- β 1. In the face of
350 TGF- β 1 cytokine treatment, which activates the TGF- β 1 promoter, transient overexpression
351 of FHL2 can successfully abrogate the activation, correlating with the repressive effects of
352 FHL2 on the TGF- β 1 transcription. Under the physiological condition, TGF- β 1-induced
353 activation of the TGF- β 1 promoter depends on a multitude of signaling pathways through the
354 binding of signal-responsive activators and repressors, including FHL2, which also positively
355 responds to the TGF- β 1 cytokine (17, 18). The feedback loop of FHL2 and TGF- β 1 may
356 constitute one of the complex transcriptional regulation networks that determine the level and
357 the outcome of TGF- β 1 in cells. It is not clear how TGF- β 1 induces hepatic fibrosis in *Fhl2*^{-/-}

358 mice. Our observation that expression of TGF- β targets Ski, SnoN and phosphorylation of
359 Smad2/3 were not altered in the liver deficient for FHL2 suggests that the canonical TGF- β
360 signaling may not be involved in this process. It remains to be determined if the profibrotic
361 action of TGF- β 1 in *Fhl2*^{-/-} liver is operated through noncanonical TGF- β signaling.

362 Our finding that loss of FHL2 resulted in increased recruitment of RNA polymerase II
363 on the TGF- β 1 promoter confers a novel role to FHL2 in regulation of gene transcription. The
364 question of how FHL2 is involved in the dynamic process of genome packaging to allow or
365 restrict transcriptional regulators access to the regulatory sequences remains to be addressed.
366 Composed of multiple LIM-domains for protein-protein interaction, FHL2 binds with several
367 chromatin modifiers including histone acetyltransferase CBP/p300 (35), histone ubiquitin
368 ligase Brca1 (36) and histone demethylase LSD1 (37) that actively participate to covalently
369 modifying nucleosomes. It is possible that FHL2 could collaborate with these enzymes to
370 maintain a repressed architecture by virtue of the restricted chromatin environment for
371 transcription regulators. Ablation of FHL2 may tailor the way in which the chromatin is
372 packaged to increase the access of RNA polymerase II to the TGF- β 1 promoter.

373 Correlating with enhanced expression of TGF- β 1, the fibrotic response in *Fhl2*^{-/-} mice
374 was dramatic in the liver. Previous report showed aggravated liver fibrosis after carbon
375 tetrachloride injection in *Fhl2*^{-/-} mice, but failed to detect increased expression of TGF- β 1
376 mRNA at the steady-state condition as reported here (31). The reason behind this difference is
377 unclear but may reflect different sensibility in the detection of TGF- β 1 transcription. Yet,
378 Huss et al revealed higher level of TGF- β 1 in fibrotic tissues from *Fhl2*^{-/-} mice than WT mice,
379 consistent with our findings that activation of TGF- β 1 gene transcription is stronger in the
380 absence of FHL2. Previous report pointed to higher fibrosis score in the lung of *Fhl2*^{-/-} mice
381 following bleomycin administration (32). It showed that loss of FHL2 resulted in increased
382 expression of the pro-inflammatory matrix protein tenascin C and downregulation of the

383 macrophage activating C-type lectin receptor DC-SIGN. This unresolved inflammation in
384 *Fhl2*^{-/-} mice was the major driver of increased pulmonary fibrosis (32). In all organ systems,
385 the wound repair process is initiated with inflammation, followed by proliferation and
386 remodeling. It is thus highly likely that FHL2 interferes in distinct processes in lung and liver
387 fibrosis. Our observations that loss of FHL2 had no drastic effect on renal fibrosis further
388 underscore the tissue specificity of FHL2 actions.

389 Effects of FHL2 loss on fibrosis stress the medical relevance of the repressive activity
390 of FHL2 on the TGF- β 1 promoter. However, we and others previously reported that FHL2
391 was upregulated in human liver fibrotic tissues and higher level of FHL2 was associated with
392 advanced fibrosis (14, 31). This is correlated with our finding of FHL2 activation in liver
393 fibrotic tissues of WT mice (see Fig. 6). In line with this observation, in human melanoma
394 and colon cancer, enhanced expression of FHL2 is correlated with an increase of TGF- β in
395 tumors with invasion, metastasis and poor survival prognostics (18-20). This multifaceted
396 nature of the relationship between FHL2 and TGF- β 1 further supports the notion that the
397 cellular context and the expression levels of each protein dictate the process and the outcome
398 of the complex signal transduction. Our data described here contribute to unveiling new facets
399 of TGF- β regulation and should facilitate additional investigations aimed at further exploring
400 TGF- β biology and dysfunctions.

401 **ACKNOWLEDGMENTS**

402

403

We thank Sophie Lotersztajn and Fatima Teixeira-Clerc for insightful discussion. We are grateful to Jean-Marc Panaud for technical help. This work was funded in part by the French Ligue contre le Cancer, Comité de Paris and Fondation ARC pour la Recherche sur le Cancer (ARC) and the Institut National du Cancer (INCA). J.D. was supported by the French Ministère de l'Enseignement Supérieur et de la Recherche, Y.N. by the Cancéropôle Ile-de-France, T.X. by Total Foundation.

409

410 **REFERENCES**

- 411 1. **Massague, J.** 2012. TGFbeta signalling in context. *Nat Rev Mol Cell Biol* **13**:616-630.
- 412 413 2. **Geiser, A. G., Kim, S. J., Roberts, A. B., and Sporn, M. B.** 1991. Characterization of the mouse transforming growth factor-beta 1 promoter and activation by the Ha-ras oncogene. *Mol Cell Biol* **11**:84-92.
- 414 415 3. **Kim, S. J., Glick, A., Sporn, M. B., and Roberts, A. B.** 1989. Characterization of the promoter region of the human transforming growth factor-beta 1 gene. *J Biol Chem* **264**:402-408.
- 416 417 4. **Van Obberghen-Schilling, E., Roche, N. S., Flanders, K. C., Sporn, M. B., and Roberts, A. B.** 1988. Transforming growth factor beta 1 positively regulates its own expression in normal and transformed cells. *J Biol Chem* **263**:7741-7746.
- 418 419 5. **Samson, T., Smyth, N., Janetzky, S., Wendler, O., Muller, J. M., Schule, R., von der Mark, H., von der Mark, K., and Wixler, V.** 2004. The LIM-only proteins FHL2 and FHL3 interact with alpha- and beta-subunits of the muscle alpha7beta1 integrin receptor. *J Biol Chem* **279**:28641-28652.
- 420 421 6. **Park, J., Will, C., Martin, B., Gullotti, L., Friedrichs, N., Buettner, R., Schneider, H., Ludwig, S., and Wixler, V.** 2008. Deficiency in the LIM-only protein FHL2 impairs assembly of extracellular matrix proteins. *Faseb J* **22**:2508-2020.
- 422 423 7. **Wixler, V., Geerts, D., Laplantine, E., Westhoff, D., Smyth, N., Aumailley, M., Sonnenberg, A., and Paulsson, M.** 2000. The LIM-only protein DRAL/FHL2 binds to the cytoplasmic domain of several alpha and beta integrin chains and is recruited to adhesion complexes. *J Biol Chem* **275**:33669-33678.
- 424 425 8. **Bai, S., Kitaura, H., Zhao, H., Chen, J., Muller, J. M., Schule, R., Darnay, B., Novack, D. V., Ross, F. P., and Teitelbaum, S. L.** 2005. FHL2 inhibits the activated osteoclast in a TRAF6-dependent manner. *J Clin Invest* **115**:2742-2751.
- 426 427 9. **Muller, J. M., Isele, U., Metzger, E., Rempel, A., Moser, M., Pscherer, A., Breyer, T., Holubarsch, C., Buettner, R., and Schule, R.** 2000. FHL2, a novel tissue-specific coactivator of the androgen receptor. *Embo J* **19**:359-369.
- 428 429 10. **Martin, B., Schneider, R., Janetzky, S., Waibler, Z., Pandur, P., Kuhl, M., Behrens, J., von der Mark, K., Starzinski-Powitz, A., and Wixler, V.** 2002. The LIM-only protein FHL2 interacts with beta-catenin and promotes differentiation of mouse myoblasts. *J Cell Biol* **159**:113-122.
- 430 431 432 433 434 435 436 437 438 439 440 441 442

- 443 11. **Morlon, A., and Sassone-Corsi, P.** 2003. The LIM-only protein FHL2 is a serum-
444 inducible transcriptional coactivator of AP-1. *Proc Natl Acad Sci U S A* **100**:3977-
445 3982.
- 446 12. **Wei, Y., Renard, C. A., Labalette, C., Wu, Y., Levy, L., Neuveut, C., Prieur, X.,
447 Flajolet, M., Prigent, S., and Buendia, M. A.** 2003. Identification of the LIM protein
448 FHL2 as a coactivator of beta-catenin. *J Biol Chem* **278**:5188-5194.
- 449 13. **Dahan, J., Nouet, Y., Jouvion, G., Levillayer, F., Adib-Conquy, M., Cassard-
450 Douclier, A. M., Tebbi, A., Blanc, F., Remy, L., Chen, J., Cairo, S., Werts, C., Si-
451 Tahar, M., Tordjmann, T., Buendia, M. A., and Wei, Y.** 2013. LIM-only protein
452 FHL2 activates NF-kappaB signaling in the control of liver regeneration and
453 hepatocarcinogenesis. *Mol Cell Biol* **33**:3299-3308.
- 454 14. **Nouet, Y., Dahan, J., Labalette, C., Levillayer, F., Julien, B., Jouvion, G., Cairo,
455 S., Vives, F. L., Ribeiro, A., Huerre, M., Colnot, S., Perret, C., Nhieu, J. T.,
456 Tordjmann, T., Buendia, M. A., and Wei, Y.** 2012. The four and a half LIM-only
457 protein 2 regulates liver homeostasis and contributes to carcinogenesis. *J Hepatol*
458 **57**:1029-1036.
- 459 15. **Ding, L., Wang, Z., Yan, J., Yang, X., Liu, A., Qiu, W., Zhu, J., Han, J., Zhang,
460 H., Lin, J., Cheng, L., Qin, X., Niu, C., Yuan, B., Wang, X., Zhu, C., Zhou, Y., Li,
461 J., Song, H., Huang, C., and Ye, Q.** 2009. Human four-and-a-half LIM family
462 members suppress tumor cell growth through a TGF-beta-like signaling pathway. *J*
463 *Clin Invest* **119**:349-361.
- 464 16. **Xia, T., Levy, L., Levillayer, F., Jia, B., Li, G., Neuveut, C., Buendia, M. A., Lan,
465 K., and Wei, Y.** 2013. The four and a half LIM-only protein 2 (FHL2) activates
466 transforming growth factor beta (TGF-beta) signaling by regulating ubiquitination of
467 the E3 ligase Arkadia. *J Biol Chem* **288**:1785-1794.
- 468 17. **Levy, L., and Hill, C. S.** 2005. Smad4 dependency defines two classes of
469 transforming growth factor {beta} (TGF-{beta}) target genes and distinguishes TGF-
470 {beta}-induced epithelial-mesenchymal transition from its antiproliferative and
471 migratory responses. *Mol Cell Biol* **25**:8108-8125.
- 472 18. **Zhang, W., Jiang, B., Guo, Z., Sardet, C., Zou, B., Lam, C. S., Li, J., He, M., Lan,
473 H. Y., Pang, R., Hung, I. F., Tan, V. P., Wang, J., and Wong, B. C.** 2010. Four-
474 and-a-half LIM protein 2 promotes invasive potential and epithelial-mesenchymal
475 transition in colon cancer. *Carcinogenesis* **31**:1220-1229.
- 476 19. **Gullotti, L., Czerwitzki, J., Kirfel, J., Propping, P., Rahner, N., Steinke, V., Kahl,
477 P., Engel, C., Schule, R., Buettner, R., and Friedrichs, N.** 2011. FHL2 expression
478 in peritumoural fibroblasts correlates with lymphatic metastasis in sporadic but not in
479 HNPCC-associated colon cancer. *Lab Invest* **91**:1695-1705.
- 480 20. **Westphal, P., Mauch, C., Florin, A., Czerwitzki, J., Olligschlager, N., Wodtke, C.,
481 Schule, R., Buttner, R., and Friedrichs, N.** 2015. Enhanced FHL2 and TGF-beta1
482 Expression Is Associated With Invasive Growth and Poor Survival in Malignant
483 Melanomas. *Am J Clin Pathol* **143**:248-256; quiz 307.
- 484 21. **Chan, K. K., Tsui, S. K., Lee, S. M., Luk, S. C., Liew, C. C., Fung, K. P., Waye,
485 M. M., and Lee, C. Y.** 1998. Molecular cloning and characterization of FHL2, a
486 novel LIM domain protein preferentially expressed in human heart. *Gene* **210**:345-
487 350.
- 488 22. **Fanton d'Andon, M., Quellard, N., Fernandez, B., Ratet, G., Lacroix-Lamande,
489 S., Vandewalle, A., Boneca, I. G., Goujon, J. M., and Werts, C.** 2014. Leptospira
490 Interrogans induces fibrosis in the mouse kidney through Inos-dependent, TLR- and
491 NLR-independent signaling pathways. *PLoS Negl Trop Dis* **8**:e2664.

- 492 23. **Leroux, A., Ferrere, G., Godie, V., Cailleux, F., Renoud, M. L., Gaudin, F.,**
493 **Naveau, S., Prevot, S., Makhzami, S., Perlemuter, G., and Cassard-Doulcier, A.**
494 **M.** 2012. Toxic lipids stored by Kupffer cells correlates with their pro-inflammatory
495 phenotype at an early stage of steatohepatitis. *J Hepatol* **57**:141-149.
- 496 24. **Labalette, C., Nouet, Y., Sobczak-Thepot, J., Armengol, C., Levillayer, F.,**
497 **Gendron, M. C., Renard, C. A., Regnault, B., Chen, J., Buendia, M. A., and Wei,**
498 **Y.** 2008. The LIM-only protein FHL2 regulates cyclin D1 expression and cell
499 proliferation. *J Biol Chem* **283**:15201-15208.
- 500 25. **Inman, G. J., Nicolas, F. J., Callahan, J. F., Harling, J. D., Gaster, L. M., Reith,**
501 **A. D., Laping, N. J., and Hill, C. S.** 2002. SB-431542 is a potent and specific
502 inhibitor of transforming growth factor-beta superfamily type I activin receptor-like
503 kinase (ALK) receptors ALK4, ALK5, and ALK7. *Mol Pharmacol* **62**:65-74.
- 504 26. **Messegueur, X., Escudero, R., Farre, D., Nunez, O., Martinez, J., and Alba, M. M.**
505 **2002.** PROMO: detection of known transcription regulatory elements using species-
506 tailored searches. *Bioinformatics* **18**:333-334.
- 507 27. **Seki, E., and Brenner, D. A.** 2015. Recent advancement of molecular mechanisms of
508 liver fibrosis. *J Hepatobiliary Pancreat Sci* **22**:512-518.
- 509 28. **Levy, L., Howell, M., Das, D., Harkin, S., Episkopou, V., and Hill, C. S.** 2007.
510 Arkadia activates Smad3/Smad4-dependent transcription by triggering signal-induced
511 SnoN degradation. *Mol Cell Biol* **27**:6068-6083.
- 512 29. **Birchenall-Roberts, M. C., Ruscetti, F. W., Kasper, J., Lee, H. D., Friedman, R.,**
513 **Geiser, A., Sporn, M. B., Roberts, A. B., and Kim, S. J.** 1990. Transcriptional
514 regulation of the transforming growth factor beta 1 promoter by v-src gene products is
515 mediated through the AP-1 complex. *Mol Cell Biol* **10**:4978-4983.
- 516 30. **Seki, E., De Minicis, S., Osterreicher, C. H., Kluwe, J., Osawa, Y., Brenner, D. A.,**
517 **and Schwabe, R. F.** 2007. TLR4 enhances TGF-beta signaling and hepatic fibrosis.
518 *Nat Med* **13**:1324-1332.
- 519 31. **Huss, S., Stellmacher, C., Goltz, D., Khlistunova, I., Adam, A. C., Trebicka, J.,**
520 **Kirfel, J., Buttner, R., and Weiskirchen, R.** 2013. Deficiency in four and one half
521 LIM domain protein 2 (FHL2) aggravates liver fibrosis in mice. *BMC Gastroenterol*
522 **13**:8.
- 523 32. **Alnajar, A., Nordhoff, C., Schied, T., Chiquet-Ehrismann, R., Loser, K., Vogl, T.,**
524 **Ludwig, S., and Wixler, V.** 2013. The LIM-only protein FHL2 attenuates lung
525 inflammation during bleomycin-induced fibrosis. *PLoS One* **8**:e81356.
- 526 33. **Li, S. Y., Huang, P. H., Tarng, C., Lin, T. P., Yang, W. C., Chang, Y. H., Yang, A.**
527 **H., Lin, C. C., Yang, M. H., Chen, J. W., Schmid-Schonbein, G. W., Chien, S.,**
528 **Chu, P. H., and Lin, S. J.** 2015. Four-and-a-Half LIM Domains Protein 2 Is a
529 Coactivator of Wnt Signaling in Diabetic Kidney Disease. *J Am Soc Nephrol*.
- 530 34. **Wei, Y., Fabre, M., Branchereau, S., Gauthier, F., Perilongo, G., and Buendia,**
531 **M. A.** 2000. Activation of beta-catenin in epithelial and mesenchymal
532 hepatoblastomas. *Oncogene* **19**:498-504.
- 533 35. **Labalette, C., Renard, C. A., Neuveut, C., Buendia, M. A., and Wei, Y.** 2004.
534 Interaction and functional cooperation between the LIM protein FHL2, CBP/p300, and
535 beta-catenin. *Mol Cell Biol* **24**:10689-10702.
- 536 36. **Yan, J., Zhu, J., Zhong, H., Lu, Q., Huang, C., and Ye, Q.** 2003. BRCA1 interacts
537 with FHL2 and enhances FHL2 transactivation function. *FEBS Lett* **553**:183-189.
- 538 37. **Kahl, P., Gullotti, L., Heukamp, L. C., Wolf, S., Friedrichs, N., Vorreuther, R.,**
539 **Solleder, G., Bastian, P. J., Ellinger, J., Metzger, E., Schule, R., and Buettner, R.**
540 **2006.** Androgen receptor coactivators lysine-specific histone demethylase 1 and four

541 and a half LIM domain protein 2 predict risk of prostate cancer recurrence. *Cancer*
542 *Res* **66**:11341-11347.
543
544

545 **Figure Legends**

546 **Figure 1.** Loss of FHL2 enhances TGF- β 1 expression in the liver. (A) TGF- β 1 cytokine in
547 Kupffer cells isolated from WT and *Fhl2*^{-/-} animals, as evaluated by ELISA. **, $p < 0.005$.
548 The data are the mean \pm S.D. obtained from five animals in each genotype. (B) Analysis of
549 TGF- β 1, TGF- β 2 and TGF- β 3 mRNA by real-time reverse transcription (RT)-PCR in
550 indicated tissues from WT and *Fhl2*^{-/-} mice. The values in the WT tissues were arbitrarily set
551 as 1. The average and S.D. values for three independent experiments are shown. *, $p < 0.05$.
552 (C) Analysis of expression of SnoN, Ski, Smad2/3 and phosphorylation of Smad2/3 in the
553 liver of four WT and four *Fhl2*^{-/-} animals by immunoblotting. Arrow head: FHL2, NS:
554 nonspecific.

555 **Figure 2.** FHL2 is associated with the TGF- β 1 promoter. (A) Schematic representation of
556 murine TGF- β 1 promoter constructs in luciferase reporter assay. (B) Reporter assay in 293T
557 cells. The activity of the -800/+800 reporter was arbitrarily set at 1. Data are presented as
558 mean induction in luciferase activity \pm S.D. from duplicate samples. The results shown are
559 representative of those from more than three independent assays. (C and D) Association of
560 FHL2 with murine TGF- β 1 promoter. WT and *Fhl2*^{-/-} MEFs were analyzed by ChIP-qPCR
561 using chromatin immunoprecipitated by anti-FHL2 antibody or IgG with the primers I (C)
562 and II (D), which are indicated in A. (E and F) Association of FHL2 with human TGF- β 1
563 promoter. HeLa, HepG2 and Huh7 cells were treated with SB431542 to inhibit the effects of
564 endogenous TGF- β followed by induction for 1 h and 5 h with human TGF- β 1 (2 ng/ml)
565 before subjected to ChIP-qPCR with two independent primers (primers 1 in E and primers 2
566 in F) specific to human TGF- β 1 promoter. *, $p < 0.05$. The data presented are the mean \pm S.D.
567 obtained from three independent experiments.

568 **Figure 3.** FHL2 is a negative regulator of the TGF- β 1 promoter. (A) Luciferase reporter assay
569 in WT and *Fhl2*^{-/-} MEFs. The activity of the -800/+800 reporter in WT MEFs was arbitrarily

570 set at 1. *, $p < 0.05$, **, $p < 0.005$, ***, $p < 0.0005$, n.s.: non significant. (B) Analysis of
571 FHL2 transcription by qPCR. Primers to detect murine *Fhl2* were used in WT and *Fhl2*^{-/-}
572 MEFs. To restore FHL2 expression in *Fhl2*^{-/-} MEFs, human FHL2 was stably expressed in
573 *Fhl2*^{-/-} MEFs (FHL2-r). Transient transfection of 0.2 µg, 0.8 µg of human FHL2 was carried
574 out in FHL2-r cells. Human FHL2 primers were used to analyze mRNA in FHL2-r related
575 cells. (C) Analysis of FHL2 protein in MEFs and 293T cells with anti-FHL2 antibody reactive
576 to both human and mouse FHL2 protein. (D) The TGF-β1 promoter is negatively regulated by
577 FHL2. The reporter -800/+510 was transfected in MEFs cells expressing different doses of
578 FHL2. Cells were treated with 10 µM SB431542 to inhibit the effects of endogenous TGF-β
579 followed by induction for 1 h with human TGF-β1 (2 ng/ml) before subjected to luciferase
580 assay. (E) Reporter assay in 293T cells. 293T cells were co-transfected with 0.2 µg, 0.8 µg of
581 plasmid expressing FHL2 and the murine TGF-β1 promoter reporter -800/+510. 36 h later,
582 cells were treated with 10 µM SB431542 followed by induction for 1 h with human TGF-β1
583 before subjected to luciferase assay. The data presented are the mean ± S.D. obtained from
584 three independent experiments.

585 **Figure 4.** Loss of FHL2 enhances the recruitment of RNA polymerase II (pol II). Chromatin
586 immunoprecipitated with anti-pol II antibody or IgG was amplified with either primer I (A) or
587 primer II (B), which are indicated in Fig. 2A. The value of amplification in chromatin
588 immunoprecipitated with IgG was arbitrarily set at 1. *, $p < 0.05$. The data presented are the
589 mean ± S.D. obtained from three independent experiments.

590 **Figure 5.** Enhanced hepatic fibrosis in *Fhl2*^{-/-} mice. *Fhl2*^{-/-} mice (n = 7) and WT mice (n = 6)
591 underwent bile duct ligation (BDL). H&E staining of liver parenchyma was performed with
592 control WT and *Fhl2*^{-/-} mice (A, B, E and F) or mice subjected to BDL (I, J, M and N).
593 Hepatic fibrosis was assessed by Sirius red staining (C, G, K and O). Quantification is shown

594 in Q. Expression of α -SMA was determined by immunohistochemistry (D, H, L and P). The
595 data presented are the mean \pm S.D. obtained from at least five mice in each group.

596 **Figure 6.** Expression of *Coll1a1*, *Tgfb1*, *TIMP1* and *Fhl2* mRNA in the liver of WT and *Fhl2*^{-/-}
597 mice after BDL. Hepatic levels of *Coll1a1*, *Tgfb1*, *TIMP1* and *Fhl2* mRNA were examined
598 by qPCR in control and operated WT and *Fhl2*^{-/-} mice. *, $p < 0.05$, **, $p < 0.005$, ***, $p <$
599 0.0005. The data presented are the mean \pm S.D. obtained from at least five mice in each
600 group.

601 **Figure 7.** No effect of FHL2 deficiency on renal fibrosis. Kidneys were derived from naive or
602 leptospira-infected WT and *Fhl2*^{-/-} mice. Light microscopy of kidney stained with H&E
603 staining (A, B, E, F, I, J, M, N) and collagen deposition stained with Sirius red (C, D, G, H,
604 K, L, O, P). Original magnifications : (A, C, E, G, I, K, M, O) 40 x, (B, D, F, H, J, L, N, P)
605 100 x. Sirius red quantification is shown in Q. TGF- β 1 mRNA was analyzed by qPCR in
606 kidney from naive or leptospira-infected WT and *Fhl2*^{-/-} mice (R). The data presented are the
607 mean \pm S.D. obtained from five mice in each group.

608

609

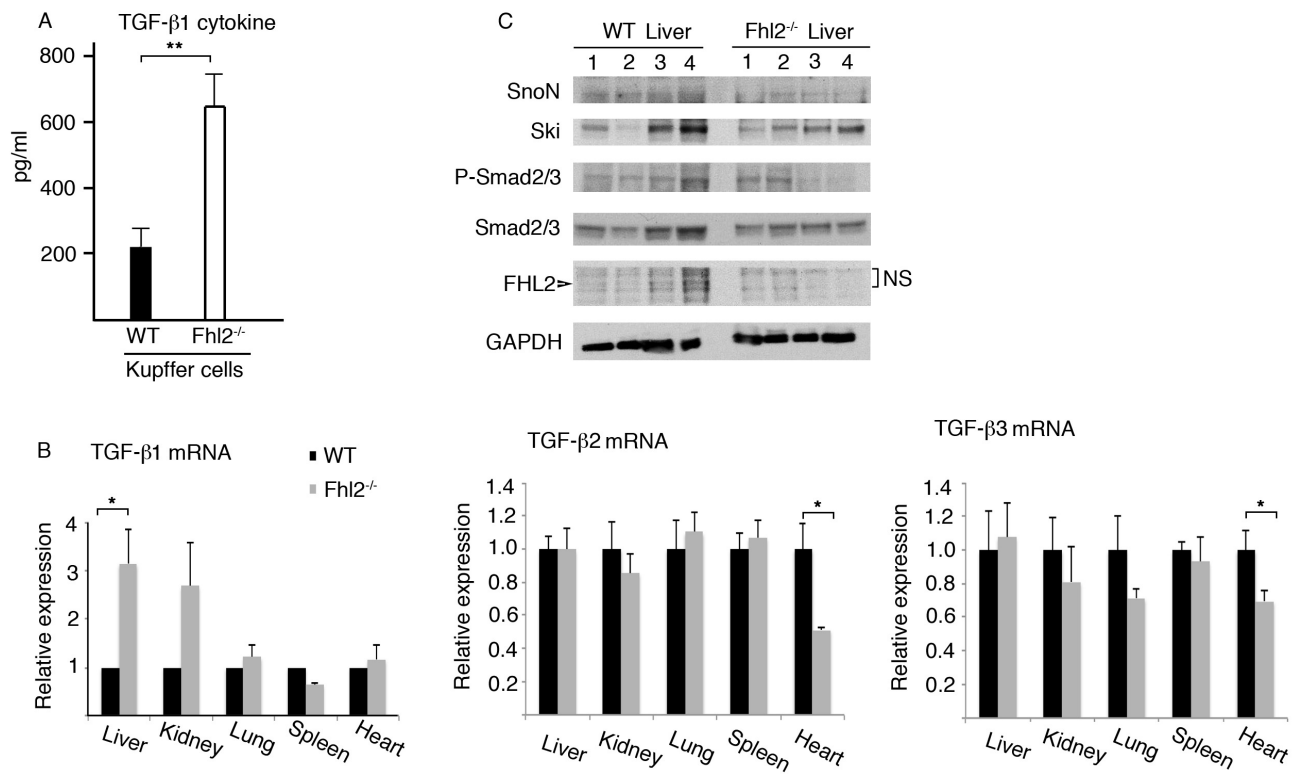


Fig. 1

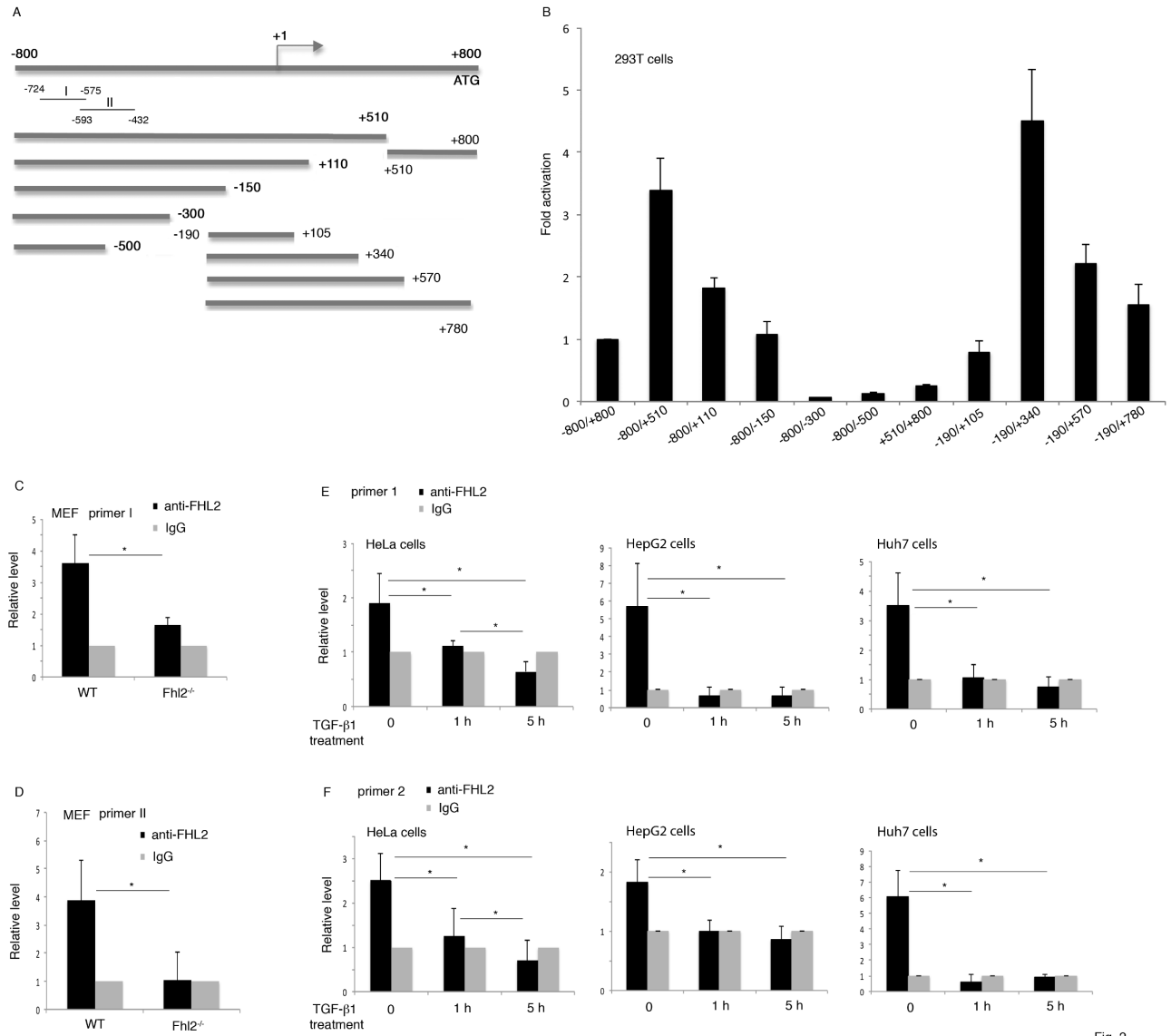


Fig. 2

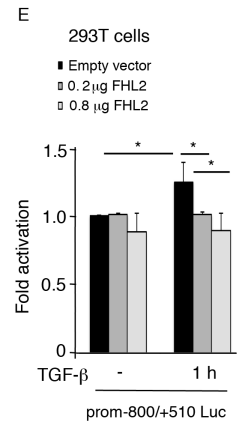
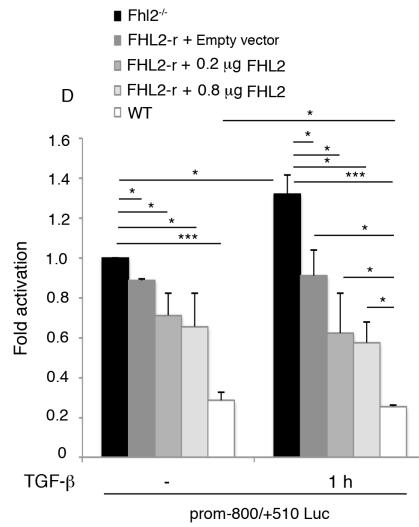
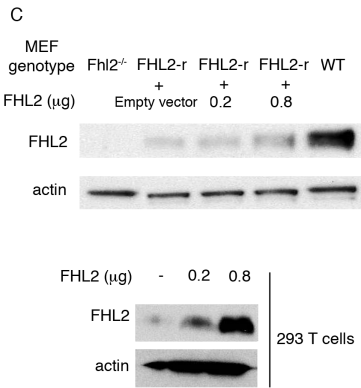
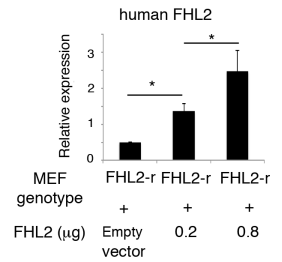
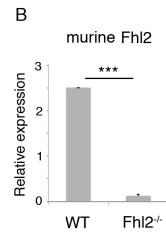
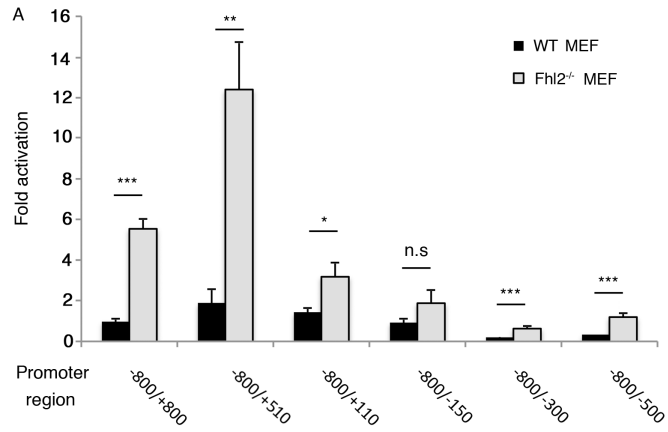


Fig. 3

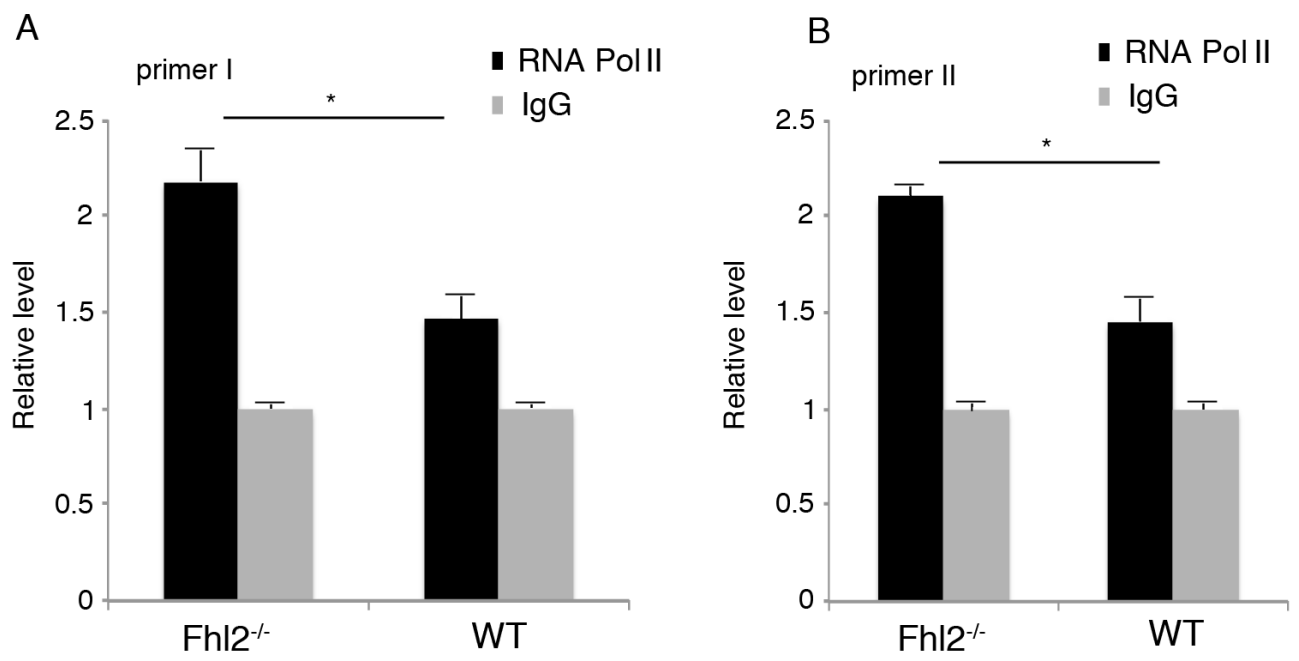


Fig. 4

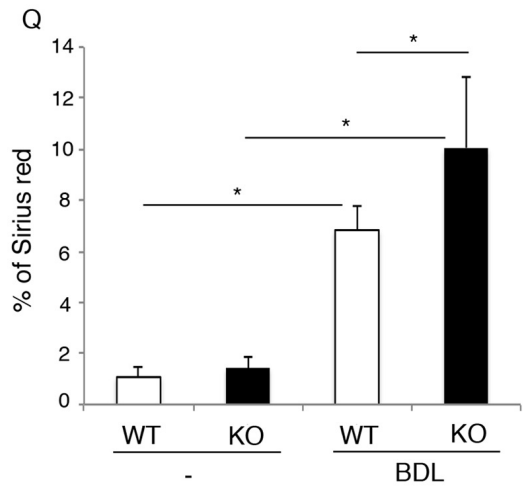
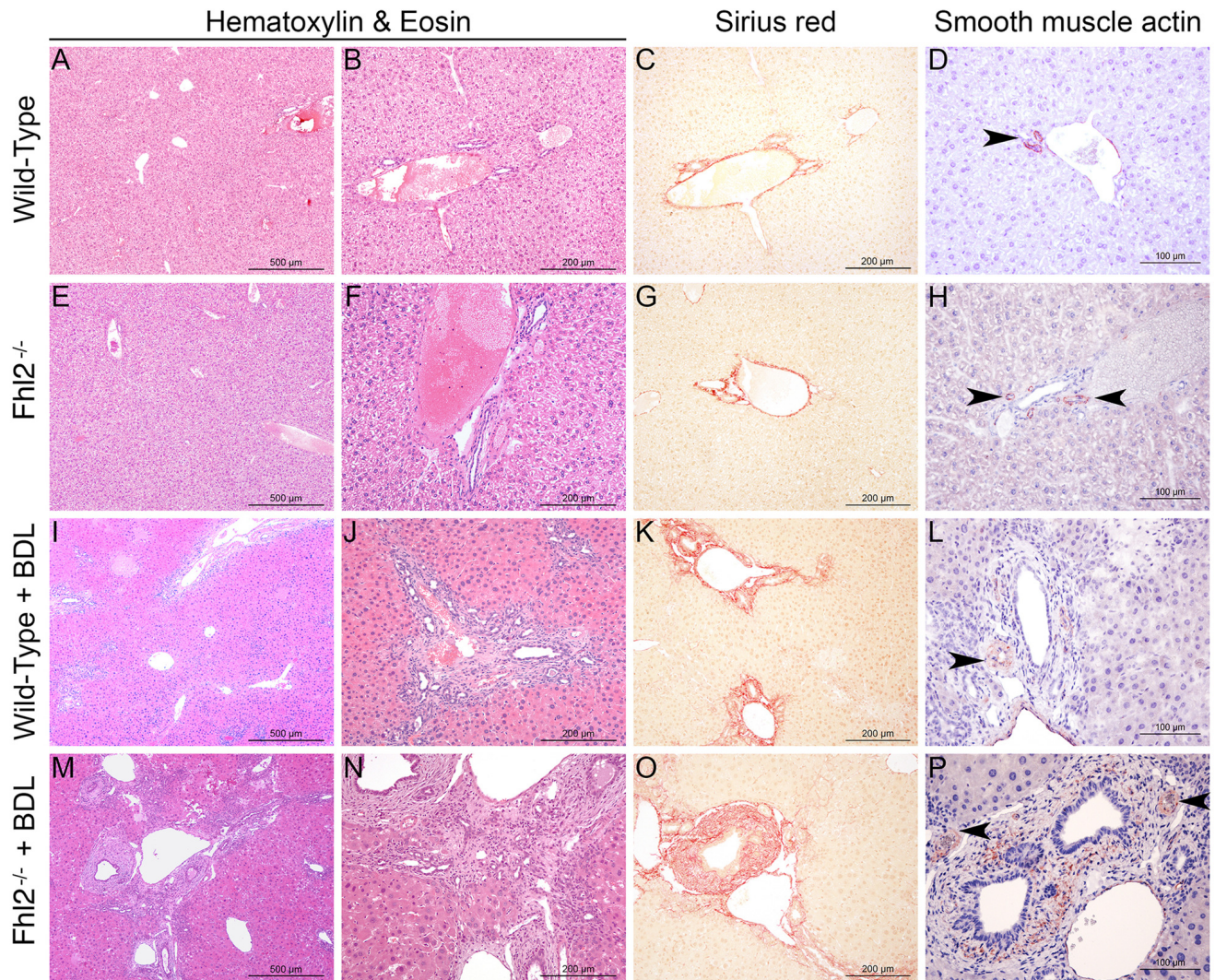


Fig. 5

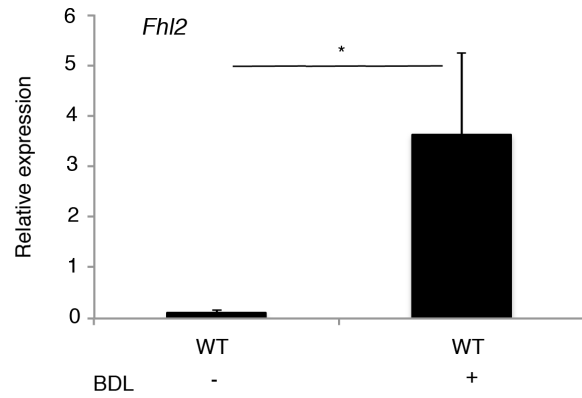
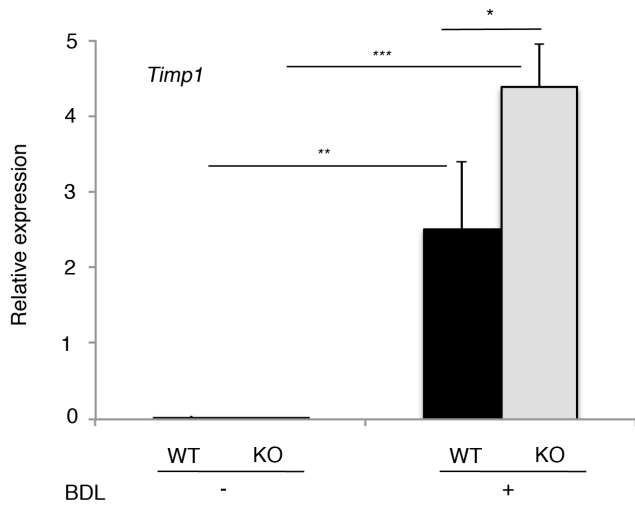
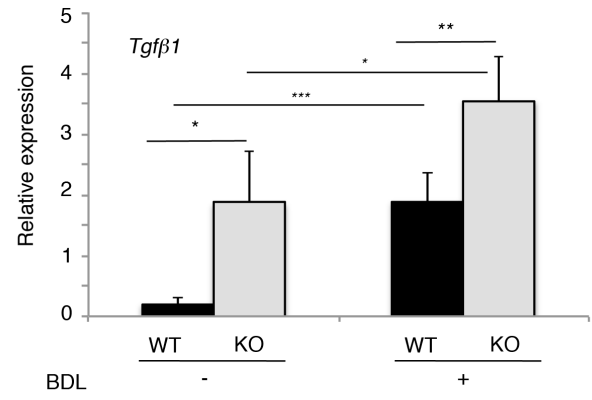
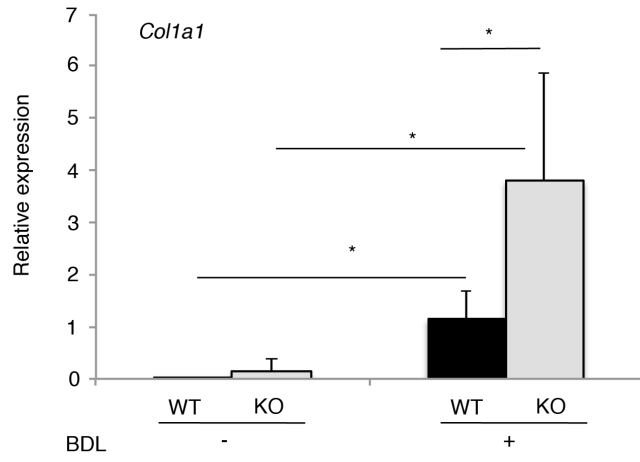


Fig. 6

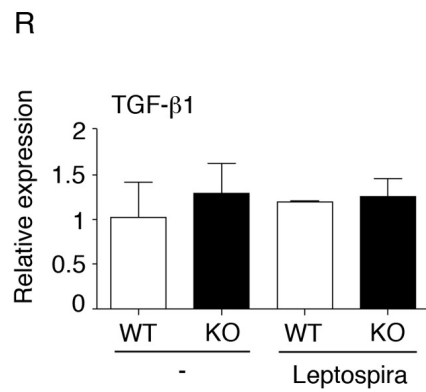
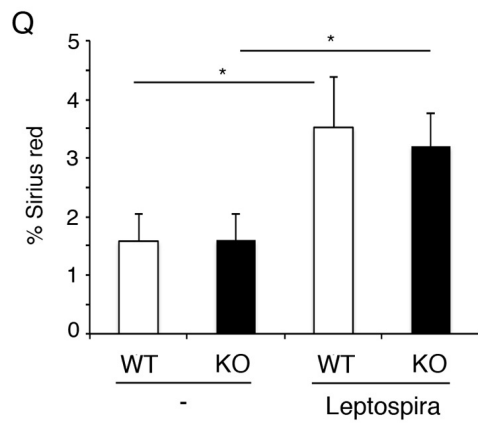
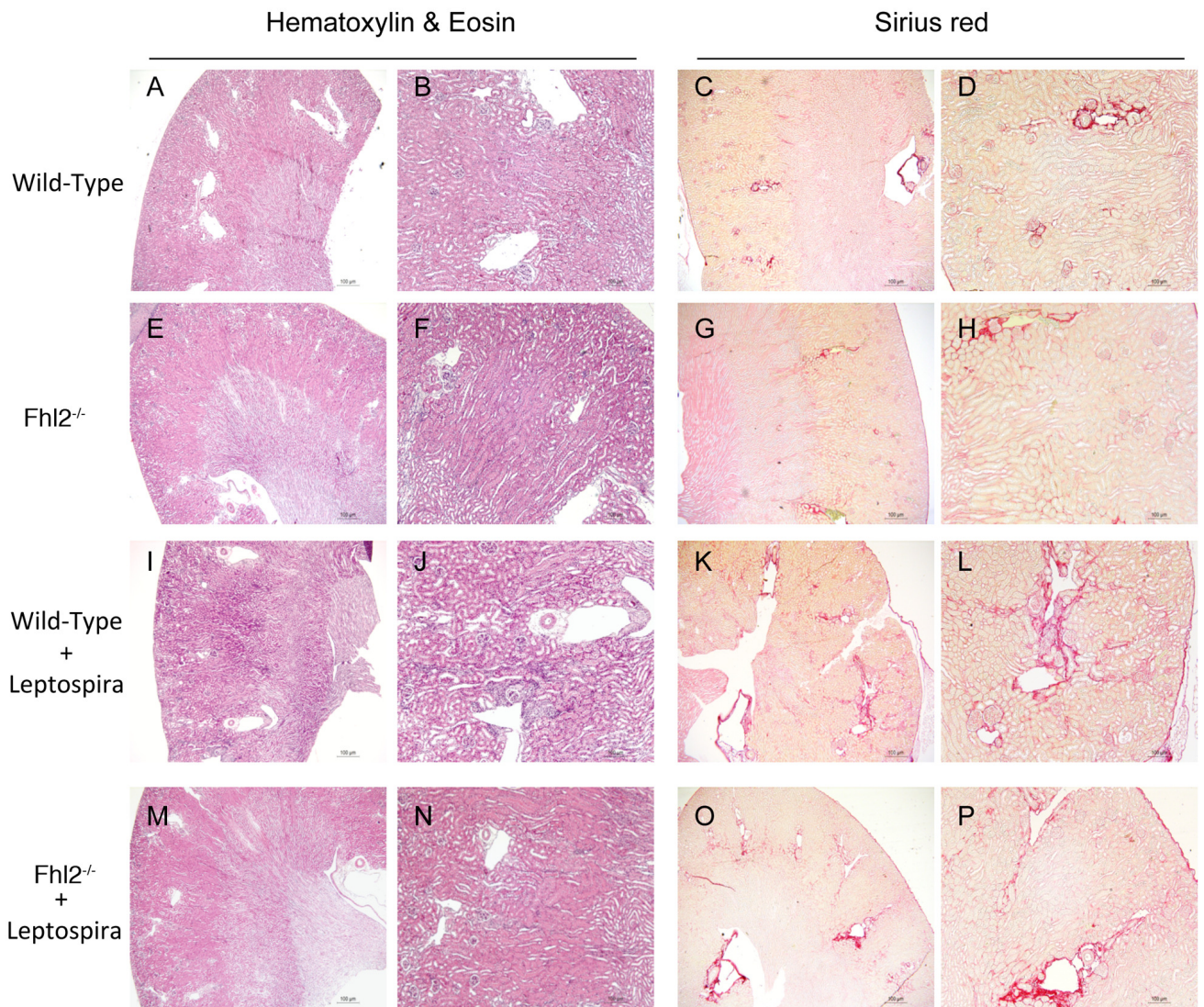


Fig. 7