



HAL
open science

Long-lasting successful dissemination of resistance to oxazolidinones in MDR *Staphylococcus epidermidis* clinical isolates in a tertiary care hospital in France

Laurent Dortet, Philippe Glaser, Najiby Kassis-Chikhani, Delphine Girlich, Philippe Ichai, Marc Boudon, Didier Samuel, Elodie Creton, Dilek Imanci, Rémy Bonnin, et al.

► To cite this version:

Laurent Dortet, Philippe Glaser, Najiby Kassis-Chikhani, Delphine Girlich, Philippe Ichai, et al.. Long-lasting successful dissemination of resistance to oxazolidinones in MDR *Staphylococcus epidermidis* clinical isolates in a tertiary care hospital in France. *Journal of Antimicrobial Chemotherapy*, 2018, 73 (1), pp.41-51. 10.1093/jac/dkx370 . pasteur-02565669

HAL Id: pasteur-02565669

<https://pasteur.hal.science/pasteur-02565669>

Submitted on 6 May 2020

HAL is a multi-disciplinary open access archive for the deposit and dissemination of scientific research documents, whether they are published or not. The documents may come from teaching and research institutions in France or abroad, or from public or private research centers.

L'archive ouverte pluridisciplinaire **HAL**, est destinée au dépôt et à la diffusion de documents scientifiques de niveau recherche, publiés ou non, émanant des établissements d'enseignement et de recherche français ou étrangers, des laboratoires publics ou privés.



Distributed under a Creative Commons Attribution 4.0 International License

Long-lasting successful dissemination of resistance to oxazolidinones in MDR *Staphylococcus epidermidis* clinical isolates in a tertiary care hospital in France

Laurent Dortet^{1-4*}†, Philippe Glaser^{4,5}†, Najiby Kassis-Chikhani⁶, Delphine Girlich²⁻⁴, Philippe Ichai⁷, Marc Boudon⁷, Didier Samuel⁷, Elodie Creton²⁻⁴, Dilek Imanci⁸, Rémy Bonnin²⁻⁴, Nicolas Fortineau¹⁻⁴ and Thierry Naas¹⁻⁴

¹Department of Bacteriology-Parasitology-Hygiene, Bicêtre Hospital, Assistance Publique - Hôpitaux de Paris, Le Kremlin-Bicêtre, France; ²EA7361 'Structure, dynamic, function and expression of broad spectrum β -lactamases', Paris-Sud University, LabEx Lermite, Faculty of Medicine, Le Kremlin-Bicêtre, France; ³Associated French National Reference Center for Antibiotic Resistance, Le Kremlin-Bicêtre, France; ⁴Joint Research Unit EERA 'Evolution and Ecology of Resistance to Antibiotics', Institut Pasteur-APHP-University Paris Sud, Paris, France; ⁵UMR 3525, CNRS, 75015 Paris, France; ⁶Department of Hygiene, Paul Brousse Hospital, Assistance Publique - Hôpitaux de Paris, Villejuif, France; ⁷Intensive Care Unit, Hepatobiliary Center, Paul Brousse Hospital, Assistance Publique - Hôpitaux de Paris, Villejuif, France; ⁸Department of Molecular Genetics and Hormonology, Assistance Publique/Hôpitaux de Paris, Bicêtre Hospital, Le Kremlin-Bicêtre, France

*Corresponding author. Service de Bactériologie-Hygiène, Hôpital de Bicêtre, 78 rue du Général Leclerc, 94275 Le Kremlin-Bicêtre, France. Tel: +33-1-45-21-36-32; Fax: +33-1-45-21-63-40; E-mail: laurent.dortet@aphp.fr

†These authors contributed equally to this work.

Received 26 May 2017; returned 10 August 2017; revised 31 August 2017; accepted 10 September 2017

Objectives: Patient- and procedure-related changes in modern medicine have turned CoNS into one of the major nosocomial pathogens. Treatments of CoNS infections are challenging owing to the large proportion of MDR strains and oxazolidinones often remain the last active antimicrobial molecules. Here, we have investigated a long-lasting outbreak (2010–13) due to methicillin- and linezolid-resistant (LR) CoNS ($n = 168$), involving 72 carriers and 49 infected patients.

Methods: Antimicrobial susceptibilities were tested by the disc diffusion method and MICs were determined by broth microdilution or Etest. The clonal relationship of LR *Staphylococcus epidermidis* (LRSE) was first determined using a semi-automated repetitive element palindromic PCR (rep-PCR) method. Then, WGS was performed on all *cfr*-positive LRSE ($n = 30$) and LRSE isolates representative of each rep-PCR-defined clone ($n = 17$). Self-transferability of *cfr*-carrying plasmids was analysed by filter-mating experiments.

Results: This outbreak was caused by the dissemination of three clones (ST2, ST5 and ST22) of LRSE. In these clones, linezolid resistance was caused by (i) mutations in the chromosome-located genes encoding the 23S RNA and L3 and L4 ribosomal proteins, but also by (ii) the dissemination of two different self-conjugative plasmids carrying the *cfr* gene encoding a 23S RNA methylase. By monitoring linezolid prescriptions in two neighbouring hospitals, we highlighted that the spread of LR-CoNS was strongly associated with linezolid use.

Conclusions: Physicians should be aware that plasmid-encoded linezolid resistance has started to disseminate among CoNS and that rational use of oxazolidinones is critical to preserve these molecules as efficient treatment options for MDR Gram-positive pathogens.

Introduction

CoNS are becoming some of the most prevalent nosocomial pathogens.¹ As typical opportunistic bacteria, they now have a substantial impact on human health, particularly with the increased use of immunosuppressive therapies and indwelling or

implanted foreign devices, which are essential in modern medicine. Indeed, as the dominant species of skin and of several mucosal microbiota, CoNS are at the forefront of important sources of endogenous infections. In addition, the treatment of CoNS infections is most often challenging due to the large proportion

of methicillin-resistant isolates and increasing dissemination of strains with decreased susceptibility to glycopeptides.¹ Consequently, antimicrobial therapy usually relies on a few last-resort antimicrobial molecules, including oxazolidinones.²

Linezolid is an oxazolidinone with activity against Gram-positive pathogens, including methicillin-resistant staphylococci and glycopeptide-resistant enterococci.³ Fifteen years after its approval for clinical use in the USA, linezolid remains extremely active against most *Staphylococcus aureus* and CoNS clinical isolates (mostly *Staphylococcus epidermidis*), with <1% and <2% resistant isolates, respectively, reported from surveillance studies.^{2,4–6} Due to its broad antimicrobial spectrum against Gram-positive bacteria, its favourable short-term safety profile, its pharmacokinetics/pharmacodynamics and its effectiveness, linezolid is widely used in critical care.^{7,8} Linezolid inhibits bacterial protein synthesis by reversibly binding and blocking the ribosomal peptidyl-transferase centre.^{7,9} The most frequently reported mechanism of resistance is a G2576U point mutation in the V domain of the 23S rRNA genes.⁶ However, the MIC of linezolid is directly related to the number of mutated 23S rRNA copies.¹⁰ Mutations in the ribosomal proteins L3 and L4 have also been reported to be responsible for linezolid resistance. The first known linezolid resistance trait transferable between Gram-positive bacteria is the *cfr* (chloramphenicol florfenicol resistance) gene. This gene encodes a 23S rRNA methylase that modifies the A2503 residue in domain V of 23S rRNA, thereby impeding binding to the ribosome of linezolid, phenicol, lincosamide, streptogramin A, pleuromutilin and the 16-member ring macrolides.^{11,12} Two other Cfr-like proteins, Cfr(B) and Cfr(C), have been recently described in *Enterococcus faecium* and *Clostridium difficile*, respectively.^{13,14} More recently, a novel transferable resistance gene, *optrA*, which confers resistance to oxazolidinones and phenicols, has been described in enterococci isolated in China.¹⁵ The *optrA* gene has been mainly described in *Enterococcus* species and rarely in other Gram-positive bacteria, mostly of porcine origin, such as *Staphylococcus sciuri*^{16,17} and *Streptococcus suis*.¹⁸

Nosocomial outbreaks with linezolid-resistant (LR) *Enterococcus faecalis*,¹⁹ *E. faecium*,^{20,21} *S. aureus*^{22,23} and *S. epidermidis*^{24–32} have been sporadically reported. Infections caused by LR *S. epidermidis* (LRSE) remain uncommon and have rarely been associated with outbreaks.^{24,28–31} However, a long-lasting outbreak (23 ST2 isolates between 2004 and 2015) due to methicillin-resistant *cfr*-negative LRSE was described recently in Italy.²⁹ Using WGS we have investigated the largest reported outbreak of linezolid- and methicillin-resistant CoNS, involving 72 carriers and 49 infected patients. By combining epidemiological, microbiological and genomic information we were able to show that this outbreak was related to (i) the dissemination of three different clones (ii) and to the transfer of two *cfr*-encoding plasmids.

Methods

Field investigation

A 750 bed tertiary care university teaching hospital (referred to as hospital PB in this study) located in a southern suburb of Paris serves as a European referral centre for liver transplantation. The hepatobiliary centre consists of an ICU and two medical-surgical hepatology (MSH) units. All diagnostic samples positive for LR-CoNS collected from patients between September 2010 and December 2013 were included in this study ($n = 168$). These samples were reassessed for diagnostic criteria to distinguish true

infections from colonization. A summary of the clinical samples from which sequenced LRSE have been isolated is shown in Table S1 (available as Supplementary data at JAC Online). During the same period of time, linezolid usage has been assessed in hospital PB and compared with a case-control hospital (referred to as hospital B in this study), another 1000 bed tertiary care teaching hospital located 2 km from hospital PB.

Bacterial isolates and susceptibility testing

Diagnostic samples were processed according to standard methods. Isolates were identified at the species level using MALDI-TOF spectrometry (Maldi-Biotyper, Bruker Daltonique SA, Wissembourg, France). Antimicrobial susceptibilities were tested by the disc diffusion method for penicillin, oxacillin, kanamycin, tobramycin, gentamicin, erythromycin, clindamycin, pristinamycin, levofloxacin, chloramphenicol, tetracycline, fusidic acid, fosfomicin, trimethoprim/sulfamethoxazole, rifampicin and linezolid. Results of linezolid susceptibility testing by the disc diffusion method were primarily used to select LR isolates. MICs were determined by broth microdilution for linezolid and tedizolid, and by Etest (bioMérieux, La Balmes-les-Grottes, France) for vancomycin, teicoplanin, daptomycin, ceftobiprole and ceftaroline. Results were interpreted according to EUCAST as updated in 2015 (http://www.eucast.org/clinical_breakpoints/).

Linezolid resistance determinants

Total DNA was extracted using the UltraClean[®] microbial DNA isolation kit (MO BIO Laboratories, Carlsbad, CA, USA). Presence of the *cfr* gene was investigated by PCR with primers described in Table S2. Specific primers were used to amplify and sequence each copy of the 23S rRNA gene (*rrlA* to *rrlF*) and *rplC*, *rplD* and *rplV* genes encoding L3, L4 and L22 ribosomal proteins, respectively (Table S2). Linezolid-susceptible *S. epidermidis* ATCC 12228 was used as reference for nucleotide and amino acid sequence comparisons (GenBank accession number NC_004461).

Clonality analysis using repetitive element palindromic PCR (rep-PCR)

To evaluate their clonal relationship, all LRSEs were subjected to Diversilab[™], a semi-automated rep-PCR method (bioMérieux, Marcy-l'Étoile, France). As recommended by the manufacturer, a cut-off for similarity of 95% defined a cluster.^{33–35}

WGS procedure

WGS was performed on all *cfr*-positive LRSE ($n = 30$) and LRSE isolates representative of each rep-PCR-defined clone ($n = 17$). Library preparation was performed using a Nextera[®] XT DNA sample preparation kit (Illumina, San Diego, CA, USA). Sequencing was performed on an Illumina MiSeq sequencer with v3 chemistry using 2×75 bp paired-end reads at a raw cluster density of ~1300000 clusters/mm². Genome sequences were assembled using the Velvet software with an optimized k-value and a minimal coverage of eight.³⁶ WGS results were used to genotype isolates by MLST (<http://cge.cbs.dtu.dk/services/MLST/>). To further determine variation amongst isolates that clustered in the same ST, we selected one strain from each ST as a reference (strains 1C6, 2E9 and 2F1 for the ST2, ST5 and ST22 lineages, respectively) and looked for SNPs. These SNPs were searched for by using the breseq software.³⁷ DNA regions specific to each strain were searched by *de novo* assembly of the unmapped reads. Antibiotic resistance genes were identified through the Center for Genomic Epidemiology web tool (<http://cge.cbs.dtu.dk/services/ResFinder/>).³⁸

Phylogenetic tree analysis using WGS data

Phylogenetic analysis of the 47 LRSE strains together with 9 strains belonging to different STs was performed using core genome alignment and

visualized using the pangenomic software package Harvest.³⁹ Briefly, the core genome of the 56 *S. epidermidis* strains was aligned using the muscle algorithm with the parsnp tool. PhiPack software was used to filter recombination and phylogenetic reconstruction was done using FastTree2. Maximum likelihood using MEGA was used to infer phylogenetic relationships between strains belonging to the same ST.⁴⁰

Self-transferability of *cfr*-harbouring plasmids

Self-transferability of *cfr*-carrying plasmids was analysed by filter-mating experiments between clinical *cfr*-positive LRSE (susceptible to fosfomycin) as donor and the linezolid-susceptible, fosfomycin-resistant *Staphylococcus capitis* strain DAM as recipient. *Trans*-conjugants were selected on agar plates containing linezolid (1 mg/L) (Sigma-Aldrich, Lyon, France) and fosfomycin (100 mg/L) (Sigma-Aldrich).

Nucleotide sequence accession number

Sequencing reads from the 47 newly sequenced *S. epidermidis* strains have been deposited in the EMBL nucleotide sequence database (<http://www.ebi.ac.uk/ena>) under the study accession number (PRJEB22222).

Results

Description of the LR-CoNS outbreak

Between September 2010 and December 2013, 168 LR-CoNS were recovered from 121 patients hospitalized in the hepatobiliary centre of hospital PB, a 750 bed tertiary care university teaching hospital. Eighty-eight LR-CoNS collected from 49 patients were responsible for infections (Figure 1a). These isolates were all identified as *S. epidermidis* (Figure 1a). The 80 remaining LR-CoNS isolates (1 *Staphylococcus auricularis*, 2 *S. capitis*, 1 *Staphylococcus haemolyticus*, 4 *Staphylococcus pettenkoferi*, 1 *Staphylococcus warneri*, 2 *Staphylococcus pasteurii* and 69 *S. epidermidis*) collected from 72 patients were considered to be colonizers (Figure 1a).

During the study period, the number of isolated LRSE per year from clinical samples responsible for infection or colonization in hospital PB was 4- to 21-fold higher than those isolated in a case-control hospital (hospital B), a 1000 bed tertiary care teaching hospital located 2 km from hospital PB (Figure 1b). Monitoring linezolid prescriptions in the two hospitals showed that the higher number of LRSE is correlated ($R^2 = 0.80$) with a higher consumption of linezolid with, from 2011 to 2014, an average of 141.8 and 29.2 defined daily doses per 1000 days of hospitalization in hospital PB and hospital B, respectively (Figure 1b). Furthermore, focusing on the ICU of hospital PB, the monthly number of patients colonized and/or infected with LRSE was correlated with the global consumption of linezolid in this unit ($R^2 = 0.89$) (Figure 1c).

Susceptibility to last-resort antimicrobial families

All LR-CoNS were resistant, in addition to methicillin, to all aminoglycosides, quinolones and chloramphenicol (Figure S1). However, all strains remained susceptible to vancomycin, daptomycin and two β -lactams (ceftobiprole and ceftaroline) (Table 1). Although tedizolid, a second-generation oxazolidinone, was shown to be efficient against some LR isolates, especially *Cfr*-producing strains,⁴¹ all LR-CoNS were also resistant to tedizolid (Table 1). Accordingly, only therapies based on these last-resort antimicrobial families are likely to be effective, but they require parenteral administration.

Clonality of LRSE isolates

We focused our analysis on LRSE, as they represented 100% of the strains responsible for infections ($n = 88$) and 93.5% (157/168) of the total LR-CoNS. Their clonal relationship was first evaluated using a semi-automated rep-PCR method. Using a 95% similarity threshold to discriminate clones, as recommended by the manufacturer, five distinct patterns were identified (C1–C5) (Figure S1A and B). C1, C2 and C3 were found among LRSE responsible for infections ($n = 88$) (Figure S1A), but also among LRSE considered as colonizers (Figure S1B). C4 and C5, with two isolates and one isolate respectively, were only identified among colonizers ($n = 69$) (Figure S1B). Among these LRSE, we identified 30 *cfr*-positive isolates but none was *optrA*, *cfr(B)* or *cfr(C)* positive.

To unambiguously determine the clonal relationships within the outbreak, WGS was performed on the 30 *cfr*-positive LRSE and on 17 LRSE isolates representative of the five clones identified by rep-PCR (9, 3, 2, 2 and 1 isolates of clones C1, C2, C3, C4 and C5, respectively) (Figure S1A and B and Table S2). Maximum likelihood phylogeny on core-genome SNPs of these 47 LRSE and of 9 *S. epidermidis* reference genomes revealed that the 47 LRSE from the outbreak cluster in three distinct lineages belonging to MLST types ST2, ST5 and ST22 (Figure 2). LRSE isolates of the rep-PCR patterns C3 and C4 were all of ST5 and ST22, respectively. In contrast, isolates from C1, C2 and C5 were closely related and were all of ST2. Accordingly, a detailed analysis of those three clones revealed that clones C2 and C5 derived from clone C1, with which they share a common ancestor, having <13 SNPs along their core genome. Furthermore, clone C2 is not monophyletic (Figure 3a). A 13946 bp deletion within the SCCmec cassette region (Figure S2) occurred at least three times independently in the ST2 clone, leading to the modification in the pattern obtained by rep-PCR and to the misidentification of the two novel clones C2 and C5 (Figure 3a). The strain of clone C5 carries an additional SCCmec cassette region inserted elsewhere in the chromosome. This insertion is likely responsible for changes in the rep-PCR pattern as compared with clone C2. LRSE isolates of the rep-PCR patterns C3 and C4 are monophyletic and distantly related to the ST2 clone, in agreement with their different STs (ST5 and ST22, respectively). The 23 ST5 isolates share a common ancestor, having <11 SNPs along their core genome (Figure 3b), whereas the two ST22 isolates differ by only 6 SNPs (Figure 3c). Therefore, WGS revealed that the observed outbreak was mainly due to three clones of *S. epidermidis* referred to as ST2, ST5 and ST22 later in this article (Figure S3).

Chromosome-encoded resistance to linezolid

The G2576U point mutation was identified in the V domain of all five copies of 23S rRNA genes of the ST2 LRSE strains (Figure 3a). These mutations would be sufficient on their own to lead to a high level of resistance to linezolid. In addition, we also identified in ST2 LRSE two mutations in *rplC* encoding ribosomal protein L3 (L101V and M156T). These mutations have previously been described in LR isolates, although the L101V mutation was not shown to influence linezolid resistance.⁴²

ST5 LRSE isolates harboured a single mutation (C2534U) in one copy of the 23S rRNA genes (*rrlC*) (Figure 3b), which is not sufficient to cause the high level of linezolid resistance of ST5 isolates. Accordingly, all ST5 LRSE isolates also harboured mutations in ribosomal proteins L3 (L101V, H146Q, V154L, A157R) and

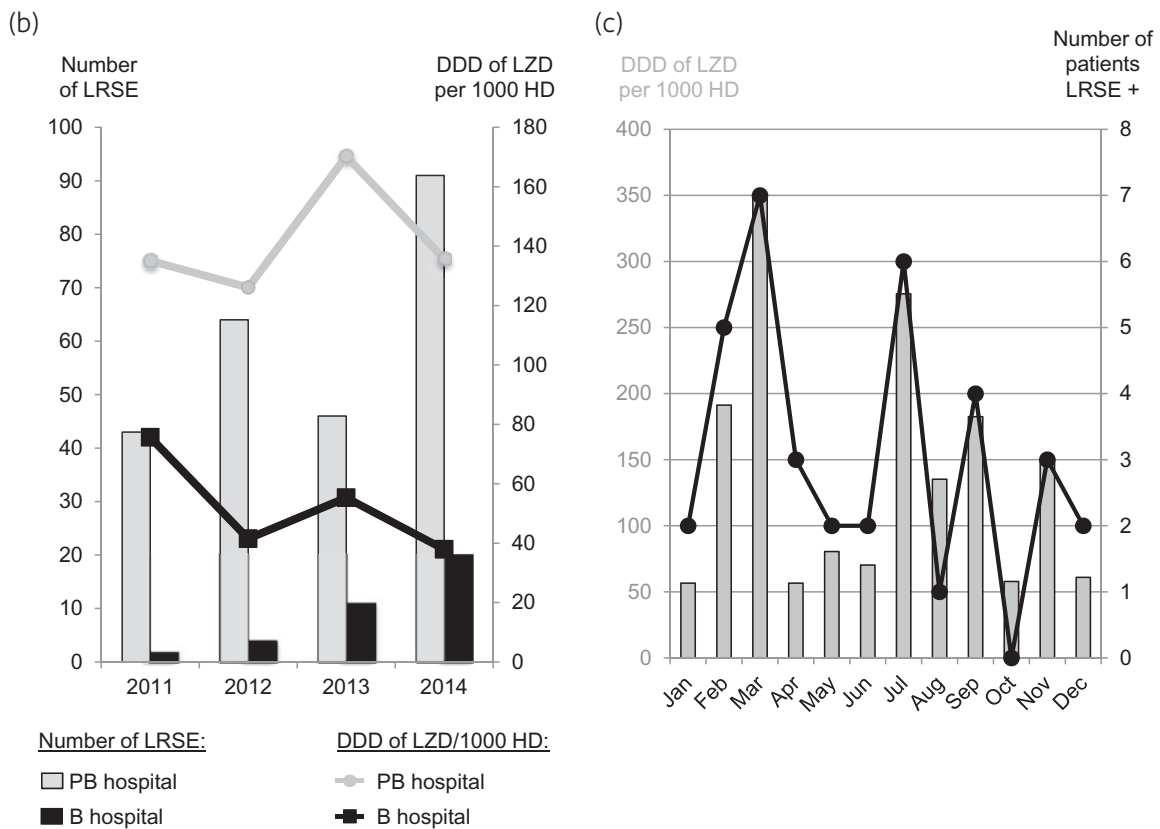
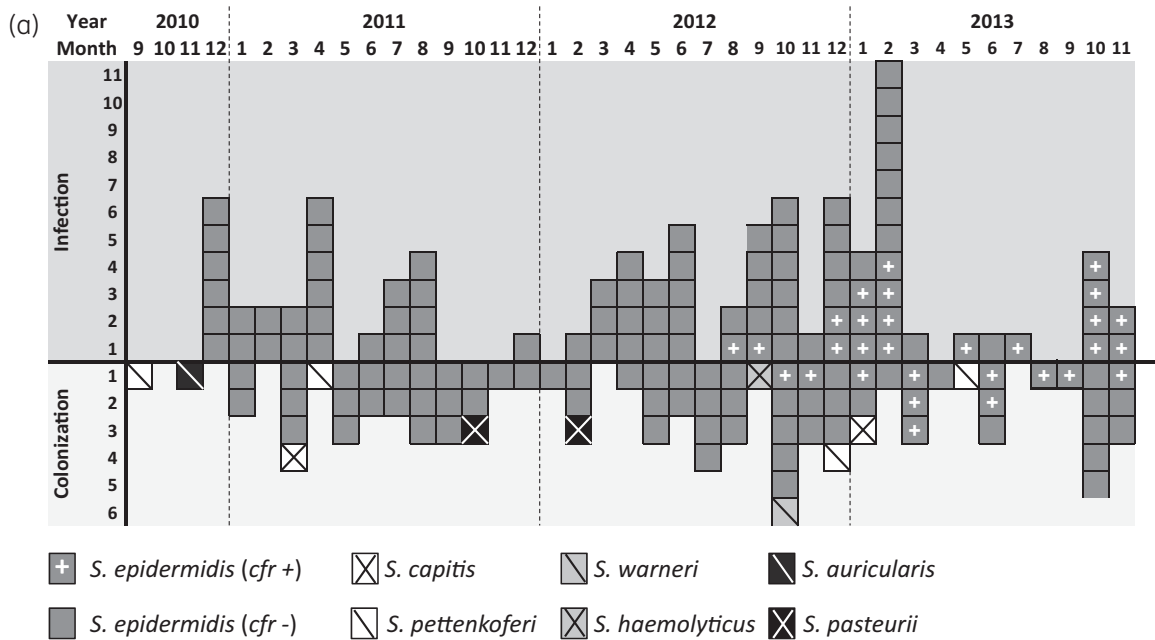


Figure 1. Timeline of the outbreak caused by LR-CoNS and correlation with global linezolid consumption. (a) Time flow chart of LR-CoNS isolates recovered from September 2010 to December 2013. Each square corresponds to one isolate. Species identification and the presence of the *cfr* gene are indicated according to the legend under the chart. (b) Comparison of the number of LRSE isolates recovered from 2011 to 2014 in hospitals B and PB, two tertiary care university teaching hospitals located 2 km apart, and correlation with the defined daily doses (DDDs) of linezolid per 1000 days of hospitalization (HD). (c) Numbers of patients colonized and/or infected with LRSE per month in the ICU of hospital PB and correlation with linezolid consumption in this unit in 2014. LZD, linezolid.

Table 1. Susceptibility of LR-CoNS (n = 168) to last-resort antimicrobial families (glycopeptides, daptomycin, fifth-generation cephalosporins and oxazolidinones)

Antimicrobial class	Agent	MIC range (mg/L)	MIC ₅₀ (mg/L)	MIC ₉₀ (mg/L)	EUCAST MIC breakpoint (mg/L)
Glycopeptides	vancomycin	0.75–4	1.5	2	4
	teicoplanin	0.5–6	2.5	4	4
Lipopeptide	daptomycin	0.12–1	0.25	0.5	1
β-Lactams	ceftobiprole	0.12–1	0.75	1	2
	ceftaroline	0.06–0.5	0.25	0.5	1
Oxazolidinones	linezolid	6 to >256	128	256	4
	tedizolid	2 to >32	8	32	0.5

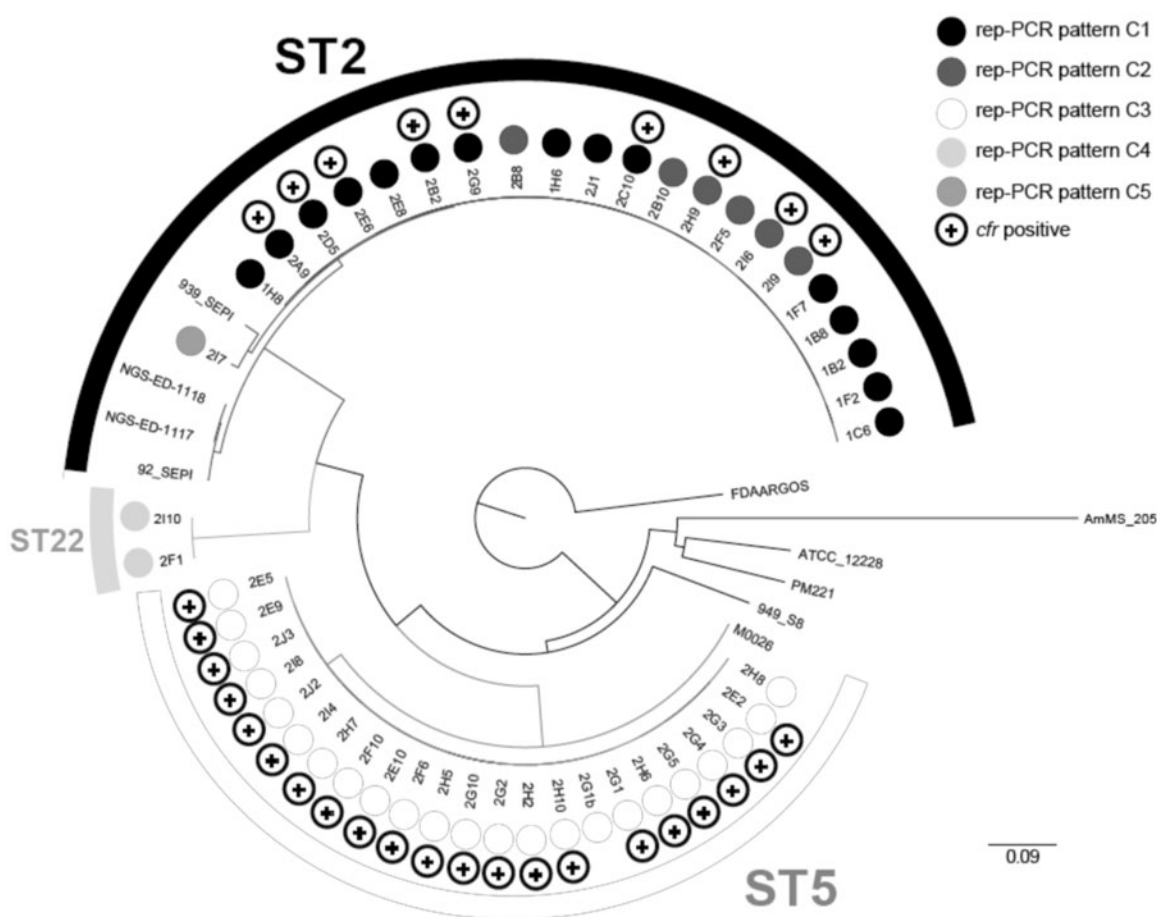


Figure 2. Genetic relatedness and *cfr* expression of LRSE isolates. Maximum likelihood phylogenetic tree based on sequence variation in the core genome from the 47 LRSE isolates submitted to WGS with 9 strains belonging to different STs. Respective STs deduced from WGS data are indicated (ST2, ST5 and ST22). Presence of *cfr* is indicated by a + sign for *cfr*+ LRSE isolates.

L4 (71insertG, R96T, N158S) that could have an additive effect on linezolid resistance. However, none of the L4 mutations was previously demonstrated to alter linezolid susceptibility.⁴² In particular, the N158S mutation has been found among linezolid-susceptible

S. epidermidis isolates and is therefore probably a clonal marker rather than a resistance mutation.⁴³

The two ST22 LRSE isolates are mutated (U2504A and/or C2534U) in four of the six copies of the 23S rRNA genes (*rrlA*, *rrlD*,

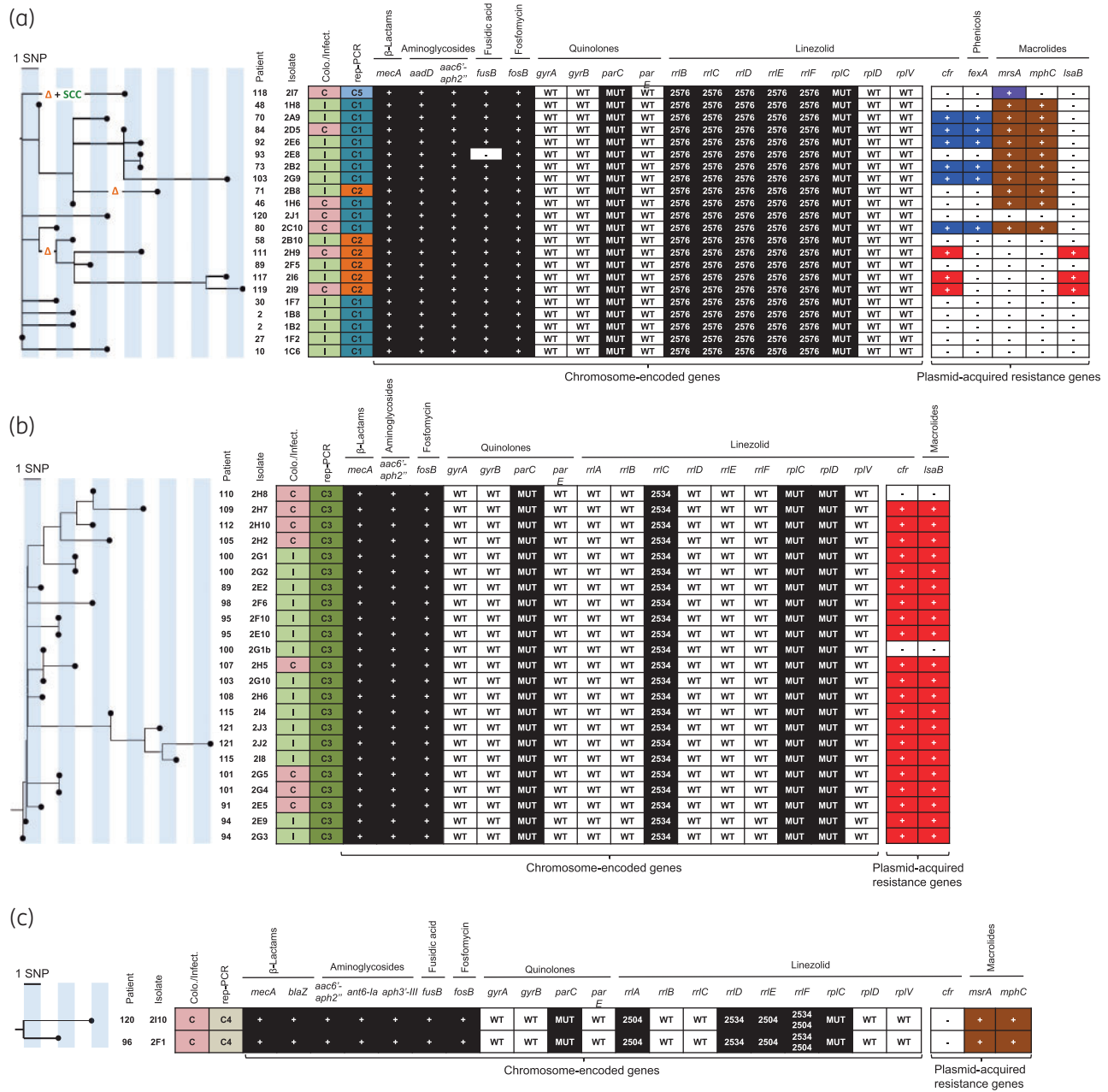


Figure 3. Maximum likelihood phylogenetic tree based on sequence variation in the core genome. (a) ST2 LRSE isolates. (b) ST5 LRSE isolates. (c) ST22 LRSE isolates. The orange Δ indicates a deletion of 13946 bp in genes located in the SCC_{mec} cassette region (Figure S2). The green ‘SCC’ indicates the presence of an additional SCC cassette. Patient and isolate numbers are indicated on the left of the tree. Colonization or infection is indicated in the first column (C in red box for colonization, I in green box for infection). Acquired resistance genes for β -lactams, aminoglycosides, fusidic acid, fosfomycin, linezolid, phenicols and macrolides are indicated as follows: + in a dark or coloured box, presence; - in a white box, absence. Mutations in chromosome-encoded genes involved in quinolone and linezolid resistance are represented. WT, WT gene; MUT, presence of a mutation known to be responsible for phenotypic resistance; 2576, G2576U point mutation in the V domain of the 23S rRNA gene (*rrl*); 2534, C2534U point mutation in the V domain of the 23S rRNA gene; 2504, U2504A point mutation in the V domain of the 23S rRNA gene. Plasmid-acquired genes boxed with the same colour (purple, blue, brown and red) are located on the same plasmid [blue, p-*cfr*-PBR-A plasmid of 38 745 bp (Figure 4a); red, p-*cfr*-PBR-B plasmid of 40 182 bp (Figure 4b)].

rrlE and *rrlF*) (Figure 3c). Interestingly, the *rrlF* gene co-harbours two mutations that have rarely been identified in LR staphylococci. Mutations in the L3 ribosomal protein (L101V, G152D and D159Y) were also found. Interestingly, this linezolid resistance pattern is

identical to that observed in ST22 LRSE isolates from Greece in 2010.⁴⁴ However, no obvious link with Greece could be evidenced in the clinical cases of the two ST22 LRSE-infected patients from hospital PB.

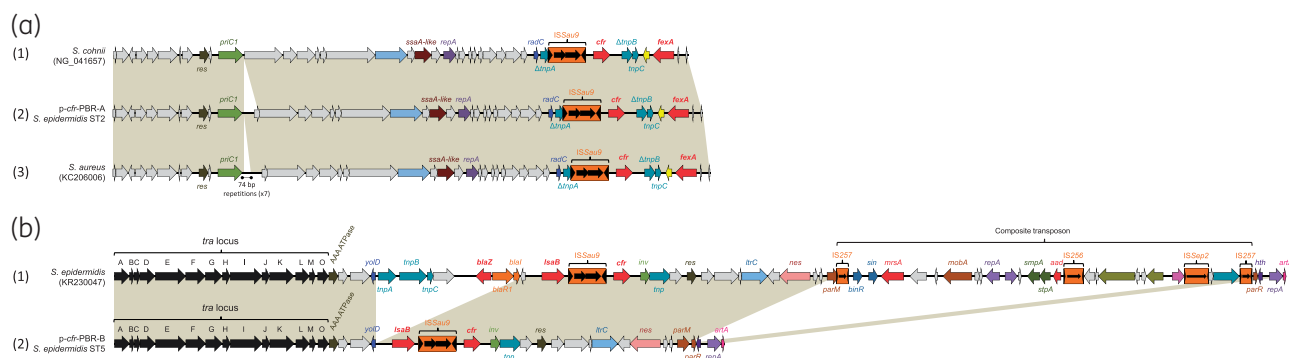


Figure 4. Comparison of the two *cfr*-harbouring plasmids with related plasmids. (a) *p-cfr*-PBR-A: (1) corresponds to the *cfr*-carrying plasmid recovered from *S. cohnii* (GenBank NG_041657); (2) corresponds to the *cfr*-carrying plasmid recovered from ST2 LRSE isolates, *p-cfr*-PBR-A; (3) corresponds to the *cfr*-carrying plasmid recovered from *S. aureus* (GenBank KC206006). (b) *p-cfr*-PBR-B: (1) pSP01 *cfr*-encoding plasmid recovered from an *S. epidermidis* strain isolated in Italy; (2) corresponds to the *cfr*-carrying plasmid recovered from ST5 LRSE isolates, *p-cfr*-PBR-B. Common features are highlighted with beige shading. Gene names are as follows: *res*, resolvase; *priC*, primase C; *ssa-like*, secretory antigen Ssa-like; *radC*, DNA repair protein RadC; *repA*, replicase; *tnp*, transposase; *cfr*, chloramphenicol/florfenicol resistance; *fexA*, florfenicol/chloramphenicol efflux pump. Genes encoding antimicrobial resistance determinants are represented in red. This figure appears in colour in the online version of JAC and in black and white in the print version of JAC.

cfr-carrying plasmids

The *cfr* gene has been detected in 7% (9/130) of the LRSE isolates of the ST2 clone, 91.3% (21/23) of the ST5 isolates and in none (0/2) of the ST22 isolates (Figure S3). Since the *cfr* gene has been detected on different plasmids, we analysed WGS data for plasmids carrying the *cfr* gene. Six ST2 *cfr*-positive isolates carried an identical 38 745 bp *cfr*-harbouring plasmid, named *p-cfr*-PBR-A, which also harboured the *fexA* gene coding for phenicol resistance (Figure 4a). It is almost identical to the *cfr*-plasmid recovered from the first reported *cfr*-positive isolate of *S. aureus* in the USA in 2008,⁴⁵ with only a 542 bp deletion and no SNP along the rest of the plasmid. In addition, *p-cfr*-PBR-A shows only three SNPs with a *cfr*-carrying plasmid recovered from a *Staphylococcus cohnii* isolated in China in 2013 (Figure 4a).⁴⁶

Most of the ST5 LRSE (21/23) and three *cfr*-positive ST2 isolates (all isolated in 2013) harbour a *cfr*-carrying plasmid of 40 182 bp (*p-cfr*-PBR-B; Figure 4b). The *p-cfr*-PBR-B plasmid was closely related to the *cfr*-carrying pSP01 plasmid recovered from an *S. epidermidis* strain isolated in 2010 in Italy (Figure 4b).⁴⁷ As shown in Figure 4(b), the *p-cfr*-PBR-B plasmid appears to be similar to the progenitor of the pSP01 plasmid. pSP01 shows only 24 SNPs over 40 kb with *p-cfr*-PBR-B, but carries two transposons inserted at nucleotide positions 16 764 and 37 532 bp of pSP01 and coding for three additional antimicrobial resistance determinants involved in resistance to β -lactams, macrolides and aminoglycosides (*blaZ*, *mrsA* and *aad*). *p-cfr*-PBR-Bs from ST5 and ST2 isolates were 100% identical, suggesting a transfer from an ST5 strain to an ST2 strain during the outbreak.

To strengthen our hypothesis of conjugative transfers of *cfr*-carrying plasmids, conjugation experiments were performed using an ST2 LRSE isolate encoding the *p-cfr*-PBR-A plasmid and an ST5 LRSE isolate encoding the *p-cfr*-PBR-B plasmid as donors and a WT *S. capitis* isolate (*S. capitis* DAM) naturally resistant to fosfomycin (MIC >1024 mg/L) as recipient. As shown in Table 2, both plasmids could be efficiently transferred, leading to multiple antibiotic resistances: to linezolid, clindamycin and chloramphenicol. The resistance to tedizolid observed for ST2 and ST5 clinical isolates was not

transferred with the *cfr*-carrying plasmid, confirming a better stability of tedizolid towards *cfr*-related oxazolidinone resistance as compared with linezolid.⁴¹ Accordingly, the tedizolid resistance observed in all LRSE is related to the chromosomal mutations of 23S RNA genes and of L3 and/or L4 protein.

Outbreak of *cfr*-positive LRSE

To determine the most likely transmission events during the disseminations of clones and plasmids, we combined clinical information (Table 3), the synoptic curve of infected or colonized patients, the distribution of *cfr* plasmids (Figure 5), the deep characterization of the isolates and the phylogeny of each clone (Figure 3).

Phylogenetic analysis showed significant within-host diversity (e.g. Patients 2 and 100), which might result either from contamination with a diverse population or several events of contamination, making the reconstruction of the transmission chain difficult. Thus, we have concentrated our investigations on the transmission of *cfr*-carrying plasmids, which represents a major event in this outbreak. The synoptic curve showed that the vast majority of the patients were hospitalized either in the ICU or in one of the surgical units (HMS3 and HSM4) when they acquired the *cfr*-positive LRSE. In addition, we observed a classical 'cascade' of *cfr*-positive LRSE acquisition in patients, strongly suggesting classical bacterial dissemination via healthcare workers. The first outbreak involving the ST2 LRSE *cfr*+ (*p-cfr*-PBR-A) strain probably started in HSM4 in August 2012 with the suspected index case, Patient 70, and four secondary cases, Patients 73, 84, 92 and 103 (Figure 5). The phylogenetic analysis shows that the ST2 strain in patient 80 was probably acquired independently (meaning not from patient 73, 84, 92 and 103). The second outbreak, which involved the ST5 LRSE *cfr*+ (*p-cfr*-PBR-B) strain probably started in the ICU (Patient 89). From Patient 89 a cross-transmission probably occurred to Patients 91, 94, 95, 100, 101 and 103. Then, a cascade of cross-transmission for the ST5 LRSE (*p-cfr*-PBR-B) strain was observed to Patients 105, 107, 108, 109, 112, 113, 115 and 121. Concerning the third

Table 2. MICs for ST2 and ST5 Cfr-producing *S. epidermidis* isolates, *S. capitis* DAM and *S. capitis* DAM transconjugants

Antimicrobial agent ^a	MIC (mg/L)				
	<i>S. epidermidis</i> ST2 p- <i>cfr</i> -PBR-A	<i>S. epidermidis</i> ST5 p- <i>cfr</i> -PBR-B	<i>S. capitis</i> DAM (p- <i>cfr</i> -PBR-A) ^b	<i>S. capitis</i> DAM (p- <i>cfr</i> -PBR-B) ^b	<i>S. capitis</i> DAM
Linezolid	>256	>256	12	12	1
Tedizolid	32	3	0.25	0.25	0.25
Ceftobiprole	1	0.75	0.064	0.064	0.064
Ceftaroline	0.25	0.19	0.032	0.032	0.032
Vancomycin	3	1	1	1	1
Teicoplanin	2	0.75	0.25	0.25	0.25
Daptomycin	0.38	0.19	0.75	0.75	0.75
Fosfomicin	24	1	>1024	>1024	>1024
Clindamycin	>256	>256	>256	>256	0.047
Chloramphenicol	256	64	256	64	4
Erythromycin	64	8	0.25	0.25	0.25

^aAntimicrobial agents for which susceptibility is impacted by Cfr-dependent 23S RNA methylation are in bold.

^bThe two plasmids indicated in brackets were transferred into *S. capitis* DAM strain by conjugation.

Table 3. Characteristics of patients ($n = 23$) with *cfr*-positive linezolid- and methicillin-resistant *S. epidermidis* (*cfr*-positive LRSE)

Male, n (%)	15 (65)
Age (years), mean (SD)	59.1 (9)
SAPS 2 score, mean (SD)	44.7 (15)
Diagnostic group, n (%)	
medical	15 (65)
surgical	8 (35)
Cancer, n (%)	5 (22)
Hospitalized in ICU prior to isolation of LRSE, n (%)	19 (83)
SOFA score, mean (SD)	9.0 (4)
vasopressors, n (%)	12 (52)
Prior antibiotic	
broad-spectrum >5 days, n (%)	17 (74)
fluoroquinolones, n (%)	3 (13)
linezolid	
length of use (days), median (IQR)	18 (13–27)
total dose (mg), median, (IQR)	10800 (7500–15900)
Total length of stay (days), mean (SD)	
hospital	109.9 (69)
ICU	36.8 (35)
Mortality, n (%)	10 (43)
ICU	7 (30)
another unit	3 (13)
Infection with LRSE, n (%)	14 (61)
Colonization with LRSE, n (%)	9 (39)

outbreak, which involved an ST2 LRSE *cfr*+ (p-*cfr*-PBR-B), microbiological and epidemiological data suggested an *in vivo* transfer of the plasmid p-*cfr*-PBR-B from the bacterial clone ST5 to the ST2 clone in a unique abscess of Patient 89, where an ST5 LRSE *cfr*+ (p-*cfr*-PBR-B) and a *cfr*-negative ST2 LRSE were isolated. Then, this ST2 LRSE *cfr*+ (p-*cfr*-PBR-B) strain was cross-transmitted to Patient

111. This strain was isolated 6 months later in Patients 117 and 119 while the ST5 LRSE (p-*cfr*-PBR-B) was the strain predominantly isolated from patients infected or colonized by LRSE. This resurgence of the ST2 LRSE *cfr*+ (p-*cfr*-PBR-B) strain might be explained by an indirect transmission route or by patients positive for LRSE who have not been detected.

Discussion

The characterization of this large outbreak showed that oxazolidinone resistance has already started to disseminate efficiently in the three most prevalent clones of *S. epidermidis*: ST2, ST5 and ST22.⁴⁸ Since CoNS are opportunistic pathogens, they are mostly isolated from clinical samples recovered from immune-compromised or debilitated patients.^{1,49} Accordingly, such a large outbreak of LR-CoNS might only represent the tip of the iceberg of the global oxazolidinone resistance in staphylococci and could thus suggest that oxazolidinone resistance may have occurred at an unexpected level in CoNS of the skin flora. This last hypothesis is worrisome since we demonstrated that linezolid resistance was not only due to clonal dissemination but also to the *in vivo* transfer of two different self-conjugative plasmids carrying the *cfr* gene. Therefore, the risk of a rapid transfer of an oxazolidinone resistance determinant in more virulent species, such as *S. aureus* or even MRSA within the normal flora of non-infected patients, should be considered. Such transfer might lead to clinical issues regarding therapeutic options.⁵⁰ Our results suggested that antibiotic stewardship measures aimed at controlling oxazolidinone prescription might help to avoid such a dramatic scenario. Indeed, since the dissemination of LRSE was correlated with the antimicrobial pressure occurring in the hospital (Figure 1b and c), restriction of linezolid prescriptions to experienced doctors in the ICU of hospital PB since December 2014 led to a decrease (–61.5%) in LRSE isolation (35 LRSE isolated from 15 patients in 2015 versus 91 LRSE isolated from 35 patients in 2014). However, this feature has to be confirmed since variations have been observed in LRSE isolation from 2010 to 2014.

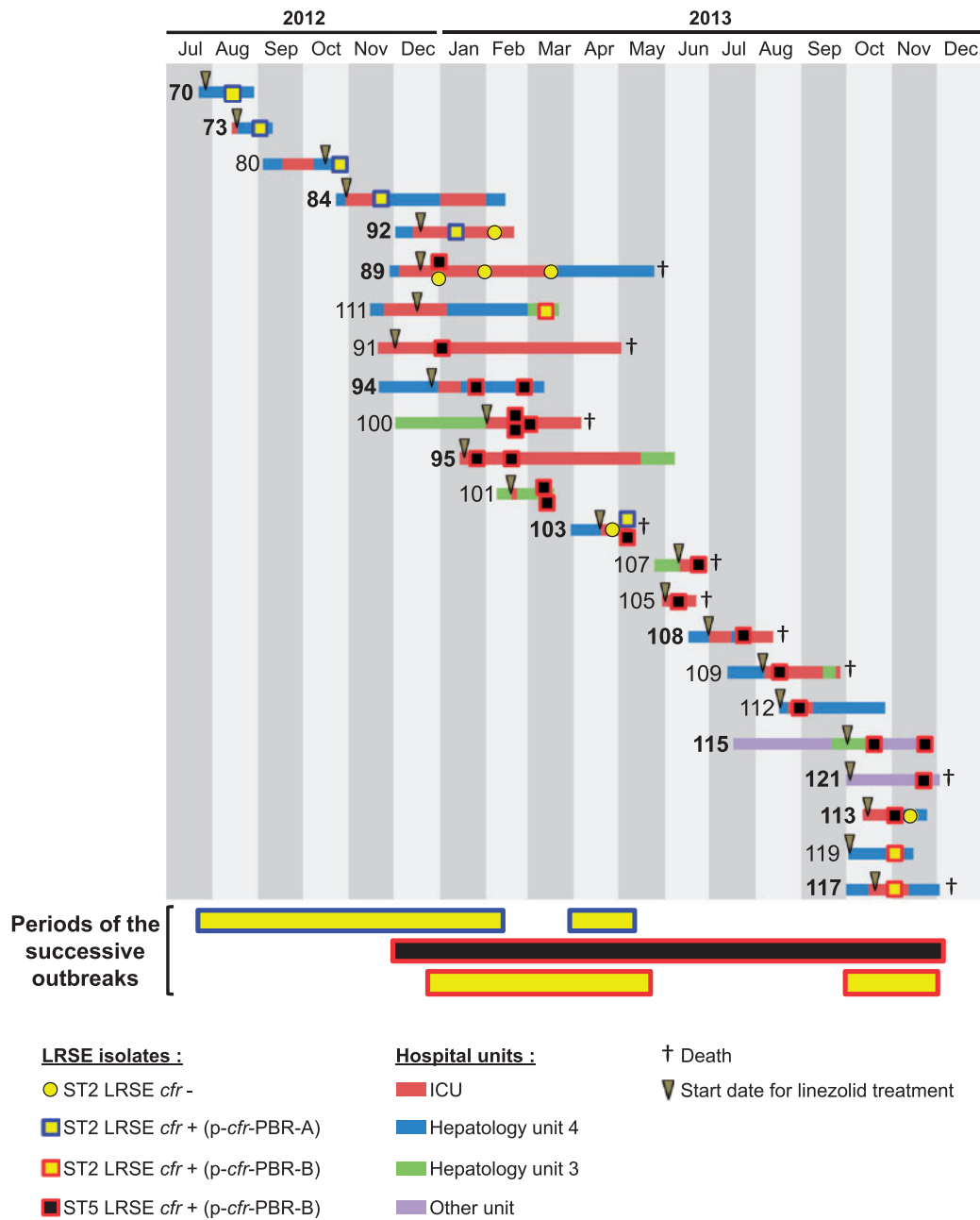


Figure 5. Synoptic curve of patients infected or colonized with *cfr*-positive LRSE. The number in front of each line corresponds to the patient number. A patient number in bold signifies that the patient has been considered infected with a *cfr*-positive LRSE. A number not in bold indicates that the *cfr*-positive LRSE has been considered as a colonizer. The periods corresponding to the three successive outbreaks are indicated below the x-axis. The colour code corresponds to related strain (ST and *cfr*-encoding plasmid). Colour codes for hospitalization unit are indicated under the chart.

With other MDR bacteria, such as carbapenemase-producing Enterobacteriaceae, specific infection control measures are implemented based on an efficient screening of colonized patients and then implementation of dedicated staff, a single room and limitation of patient transfer to avoid outbreaks. However, this requires the availability of accurate detection tests. Unfortunately, no commercially available assay addresses the detection of plasmid-

mediated resistance to oxazolidinone, reinforcing the possible unrecognized dissemination of this resistance trait.

We confirmed that the transfer of the *cfr*-carrying plasmid alone does not alter tedizolid susceptibility (Table 2). Accordingly, and concomitantly with tedizolid approval in France in 2015, the clinical microbiology laboratory that is used by hospitals PB and B has implemented routine susceptibility testing of this drug in case

of linezolid resistance. However, in this outbreak the *in vivo* transfer of the p-*cfr*-PBR-B plasmid always occurred in an ST2 LRSE isolate (Figures 3a and 5), which co-harboured chromosomal mutations in 23S rRNA genes and L3 and L4 ribosomal proteins (Figure 3a), leading also to tedizolid co-resistance (Tables 1 and 2). Thus, as opposed to oxazolidinones that could be orally administered, the few remaining active antimicrobial molecules (glycopeptides, daptomycin, ceftaroline and ceftobiprole) for the treatment of LRSE infections required parenteral injection. In addition, it has been shown for MRSA infections that high vancomycin MICs (≥ 1.5 mg/L) were associated with higher mortality rates and treatment failures.⁵¹ In our study, 82.9% of LRSE responsible for infections (73/88) had vancomycin MICs ≥ 1.5 mg/L, reducing the therapeutic options to daptomycin and ceftaroline and ceftobiprole. Consequently, dissemination of such clones might lead to prolonged hospitalization, increased cost for the hospital and in some instances increased mortality.

Finally, we demonstrated that WGS was crucial in the investigation of this outbreak and in accurately evidencing the transmission chain. Indeed, we have shown that molecular methods classically used for the typing of CoNS^{33–35} were not reliable (rep-PCR) or not discriminating enough. Our results strongly suggest that recognition of mobile genetic elements by rep-PCR that might occur by chance (like the SCCmec cassette here) leads to errors in the interpretation of clonality. This observation is of utmost importance since modifications in the SCCmec cassette are known to occur frequently in CoNS. Accordingly, rep-PCR results have to be considered with caution when analysing CoNS outbreaks.

Acknowledgements

We would like to thank Dr Liliana Mihaila for collecting some of the LR-CoNS isolates.

Funding

This work was supported by the Assistance Publique – Hôpitaux de Paris, a grant from the Université Paris Sud (EA 7361), the LabEx LERMIT supported by a grant from the French National Research Agency (ANR-10-LABX-33) and the LabEx IBEID.

Transparency declarations

None to declare.

Supplementary data

Tables S1 and S2 and Figures S1 to S3 are available as [Supplementary data](#) at JAC Online.

References

- 1 Becker K, Heilmann C, Peters G. Coagulase-negative staphylococci. *Clin Microbiol Rev* 2014; **27**: 870–926.
- 2 Mendes RE, Deshpande LM, Jones RN. Linezolid update: stable *in vitro* activity following more than a decade of clinical use and summary of associated resistance mechanisms. *Drug Resist Updat* 2014; **17**: 1–12.
- 3 Shinabarger D. Mechanism of action of the oxazolidinone antibacterial agents. *Expert Opin Investig Drugs* 1999; **8**: 1195–202.
- 4 Decousser JW, Desroches M, Bourgeois-Nicolaos N et al. Susceptibility trends including emergence of linezolid resistance among coagulase-negative staphylococci and methicillin-resistant *Staphylococcus aureus* from invasive infections. *Int J Antimicrob Agents* 2015; **46**: 622–30.
- 5 Flamm RK, Mendes RE, Hogan PA et al. Linezolid surveillance results for the United States (LEADER Surveillance Program 2014). *Antimicrob Agents Chemother* 2016; **60**: 2273–80.
- 6 Gu B, Kelesidis T, Tsiodras S et al. The emerging problem of linezolid-resistant *Staphylococcus*. *J Antimicrob Chemother* 2013; **68**: 4–11.
- 7 Diekema DJ, Jones RN. Oxazolidinone antibiotics. *Lancet* 2001; **358**: 1975–82.
- 8 Kollef MH, Rello J, Cammarata SK et al. Clinical cure and survival in Gram-positive ventilator-associated pneumonia: retrospective analysis of two double-blind studies comparing linezolid with vancomycin. *Intensive Care Med* 2004; **30**: 388–94.
- 9 Wilson DN, Schluenzen F, Harms JM et al. The oxazolidinone antibiotics perturb the ribosomal peptidyl-transferase center and effect tRNA positioning. *Proc Natl Acad Sci USA* 2008; **105**: 13339–44.
- 10 Besier S, Ludwig A, Zander J et al. Linezolid resistance in *Staphylococcus aureus*: gene dosage effect, stability, fitness costs, and cross-resistances. *Antimicrob Agents Chemother* 2008; **52**: 1570–2.
- 11 Kehrenberg C, Schwarz S, Jacobsen L et al. A new mechanism for chloramphenicol, florfenicol and clindamycin resistance: methylation of 23S ribosomal RNA at A2503. *Mol Microbiol* 2005; **57**: 1064–73.
- 12 Toh SM, Xiong L, Arias CA et al. Acquisition of a natural resistance gene renders a clinical strain of methicillin-resistant *Staphylococcus aureus* resistant to the synthetic antibiotic linezolid. *Mol Microbiol* 2007; **64**: 1506–14.
- 13 Candela T, Marvaud JC, Nguyen TK et al. A *cfr*-like gene *cfr(C)* conferring linezolid resistance is common in *Clostridium difficile*. *Int J Antimicrob Agents* 2017; **50**: 496–500.
- 14 Deshpande LM, Ashcraft DS, Kahn HP et al. Detection of a new *cfr*-like gene, *cfr(B)*, in *Enterococcus faecium* isolates recovered from human specimens in the United States as part of the SENTRY Antimicrobial Surveillance Program. *Antimicrob Agents Chemother* 2015; **59**: 6256–61.
- 15 Wang Y, Lv Y, Cai J et al. A novel gene, *optrA*, that confers transferable resistance to oxazolidinones and phenicols and its presence in *Enterococcus faecalis* and *Enterococcus faecium* of human and animal origin. *J Antimicrob Chemother* 2015; **70**: 2182–90.
- 16 Fan R, Li D, Wang Y et al. Presence of the *optrA* gene in methicillin-resistant *Staphylococcus sciuri* of porcine origin. *Antimicrob Agents Chemother* 2016; **60**: 7200–5.
- 17 Li D, Wang Y, Schwarz S et al. Co-location of the oxazolidinone resistance genes *optrA* and *cfr* on a multiresistance plasmid from *Staphylococcus sciuri*. *J Antimicrob Chemother* 2016; **71**: 1474–8.
- 18 Huang J, Chen L, Wu Z et al. Retrospective analysis of genome sequences revealed the wide dissemination of *optrA* in Gram-positive bacteria. *J Antimicrob Chemother* 2017; **72**: 614–6.
- 19 Ruggero KA, Schroeder LK, Schreckenberger PC et al. Nosocomial superinfections due to linezolid-resistant *Enterococcus faecalis*: evidence for a gene dosage effect on linezolid MICs. *Diagn Microbiol Infect Dis* 2003; **47**: 511–3.
- 20 Rahim S, Pillai SK, Gold HS et al. Linezolid-resistant, vancomycin-resistant *Enterococcus faecium* infection in patients without prior exposure to linezolid. *Clin Infect Dis* 2003; **36**: E146–8.
- 21 Schulte B, Heining A, Autenrieth IB et al. Emergence of increasing linezolid-resistance in enterococci in a post-outbreak situation with vancomycin-resistant *Enterococcus faecium*. *Epidemiol Infect* 2008; **136**: 1131–3.

- 22 Morales G, Picazo JJ, Baos E *et al.* Resistance to linezolid is mediated by the *cfr* gene in the first report of an outbreak of linezolid-resistant *Staphylococcus aureus*. *Clin Infect Dis* 2010; **50**: 821–5.
- 23 Sanchez GM, De la Torre MA, Morales G *et al.* Clinical outbreak of linezolid-resistant *Staphylococcus aureus* in an intensive care unit. *JAMA* 2010; **303**: 2260–4.
- 24 Bender J, Strommenger B, Steglich M *et al.* Linezolid resistance in clinical isolates of *Staphylococcus epidermidis* from German hospitals and characterization of two *cfr*-carrying plasmids. *J Antimicrob Chemother* 2015; **70**: 1630–8.
- 25 Bonilla H, Huband MD, Seidel J *et al.* Multicity outbreak of linezolid-resistant *Staphylococcus epidermidis* associated with clonal spread of a *cfr*-containing strain. *Clin Infect Dis* 2010; **51**: 796–800.
- 26 Karavasilis V, Zarkotou O, Panopoulou M *et al.* Wide dissemination of linezolid-resistant *Staphylococcus epidermidis* in Greece is associated with a linezolid-dependent ST22 clone. *J Antimicrob Chemother* 2015; **70**: 1625–9.
- 27 Kelly S, Collins J, Maguire M *et al.* An outbreak of colonization with linezolid-resistant *Staphylococcus epidermidis* in an intensive therapy unit. *J Antimicrob Chemother* 2008; **61**: 901–7.
- 28 Mihaila L, Defrance G, Levesque E *et al.* A dual outbreak of bloodstream infections with linezolid-resistant *Staphylococcus epidermidis* and *Staphylococcus pettenkoferi* in a liver intensive care unit. *Int J Antimicrob Agents* 2012; **40**: 472–4.
- 29 Morroni G, Brenciani A, Vincenzi C *et al.* A clone of linezolid-resistant *Staphylococcus epidermidis* bearing the G2576T mutation is endemic in an Italian hospital. *J Hosp Infect* 2016; **94**: 203–6.
- 30 O'Connor C, Powell J, Finnegan C *et al.* Incidence, management and outcomes of the first *cfr*-mediated linezolid-resistant *Staphylococcus epidermidis* outbreak in a tertiary referral centre in the Republic of Ireland. *J Hosp Infect* 2015; **90**: 316–21.
- 31 Seral C, Saenz Y, Algarate S *et al.* Nosocomial outbreak of methicillin- and linezolid-resistant *Staphylococcus epidermidis* associated with catheter-related infections in intensive care unit patients. *Int J Med Microbiol* 2011; **301**: 354–8.
- 32 Trevino M, Martinez-Lamas L, Romero-Jung PA *et al.* Endemic linezolid-resistant *Staphylococcus epidermidis* in a critical care unit. *Eur J Clin Microbiol Infect Dis* 2009; **28**: 527–33.
- 33 Babouee B, Frei R, Schultheiss E *et al.* Comparison of the DiversiLab repetitive element PCR system with spa typing and pulsed-field gel electrophoresis for clonal characterization of methicillin-resistant *Staphylococcus aureus*. *J Clin Microbiol* 2011; **49**: 1549–55.
- 34 Grisold AJ, Zarfel G, Strenger V *et al.* Use of automated repetitive-sequence-based PCR for rapid laboratory confirmation of nosocomial outbreaks. *J Infect* 2010; **60**: 44–51.
- 35 Wang SH, Stevenson KB, Hines L *et al.* Evaluation of repetitive element polymerase chain reaction for surveillance of methicillin-resistant *Staphylococcus aureus* at a large academic medical center and community hospitals. *Diagn Microbiol Infect Dis* 2015; **81**: 13–7.
- 36 Zerbino DR, Birney E. Velvet: algorithms for de novo short read assembly using de Bruijn graphs. *Genome Res* 2008; **18**: 821–9.
- 37 Deatherage DE, Barrick JE. Identification of mutations in laboratory-evolved microbes from next-generation sequencing data using breseq. *Methods Mol Biol* 2014; **1151**: 165–88.
- 38 Zankari E, Hasman H, Cosentino S *et al.* Identification of acquired antimicrobial resistance genes. *J Antimicrob Chemother* 2012; **67**: 2640–4.
- 39 Treangen TJ, Ondov BD, Koren S *et al.* The Harvest suite for rapid core-genome alignment and visualization of thousands of intraspecific microbial genomes. *Genome Biol* 2014; **15**: 524.
- 40 Tamura K, Peterson D, Peterson N *et al.* MEGA5: molecular evolutionary genetics analysis using maximum likelihood, evolutionary distance, and maximum parsimony methods. *Mol Biol Evol* 2011; **28**: 2731–9.
- 41 Locke JB, Finn J, Hilgers M *et al.* Structure-activity relationships of diverse oxazolidinones for linezolid-resistant *Staphylococcus aureus* strains possessing the *cfr* methyltransferase gene or ribosomal mutations. *Antimicrob Agents Chemother* 2010; **54**: 5337–43.
- 42 Long KS, Vester B. Resistance to linezolid caused by modifications at its binding site on the ribosome. *Antimicrob Agents Chemother* 2012; **56**: 603–12.
- 43 Wong A, Reddy SP, Smyth DS *et al.* Polyphyletic emergence of linezolid-resistant staphylococci in the United States. *Antimicrob Agents Chemother* 2010; **54**: 742–8.
- 44 Liakopoulos A, Spiliopoulou I, Damani A *et al.* Dissemination of two international linezolid-resistant *Staphylococcus epidermidis* clones in Greek hospitals. *J Antimicrob Chemother* 2010; **65**: 1070–1.
- 45 Mendes RE, Deshpande LM, Castanheira M *et al.* First report of *cfr*-mediated resistance to linezolid in human staphylococcal clinical isolates recovered in the United States. *Antimicrob Agents Chemother* 2008; **52**: 2244.
- 46 Chen H, Wu W, Ni M *et al.* Linezolid-resistant clinical isolates of enterococci and *Staphylococcus cohnii* from a multicentre study in China: molecular epidemiology and resistance mechanisms. *Int J Antimicrob Agents* 2013; **42**: 317–21.
- 47 Brenciani A, Morroni G, Pollini S *et al.* Characterization of novel conjugative multiresistance plasmids carrying *cfr* from linezolid-resistant *Staphylococcus epidermidis* clinical isolates from Italy. *J Antimicrob Chemother* 2016; **71**: 307–13.
- 48 Miragaia M, Thomas JC, Couto I *et al.* Inferring a population structure for *Staphylococcus epidermidis* from multilocus sequence typing data. *J Bacteriol* 2007; **189**: 2540–52.
- 49 Chessa D, Ganau G, Mazzarello V. An overview of *Staphylococcus epidermidis* and *Staphylococcus aureus* with a focus on developing countries. *J Infect Dev Ctries* 2015; **9**: 547–50.
- 50 Cafini F, Nguyen le TT, Higashide M *et al.* Horizontal gene transmission of the *cfr* gene to MRSA and *Enterococcus*: role of *Staphylococcus epidermidis* as a reservoir and alternative pathway for the spread of linezolid resistance. *J Antimicrob Chemother* 2016; **71**: 587–92.
- 51 van Hal SJ, Lodise TP, Paterson DL. The clinical significance of vancomycin minimum inhibitory concentration in *Staphylococcus aureus* infections: a systematic review and meta-analysis. *Clin Infect Dis* 2012; **54**: 755–71.