



High diversity of invasive *Haemophilus influenzae* isolates in France and the emergence of resistance to third generation cephalosporins by alteration of *ftsI* gene

Ala-Eddine Deghmane, Eva Hong, Sara Chehboub, Aude Terrade, Michael Falguières, Morgan Sort, Odile B. Harrison, Keith A. Jolley, Muhamed-Kheir Taha

► To cite this version:

Ala-Eddine Deghmane, Eva Hong, Sara Chehboub, Aude Terrade, Michael Falguières, et al.. High diversity of invasive *Haemophilus influenzae* isolates in France and the emergence of resistance to third generation cephalosporins by alteration of *ftsI* gene. *Journal of Infection*, 2019, 79 (1), pp.7-14. 10.1016/j.jinf.2019.05.007 . pasteur-02423493

HAL Id: pasteur-02423493

<https://pasteur.hal.science/pasteur-02423493>

Submitted on 25 Oct 2021

HAL is a multi-disciplinary open access archive for the deposit and dissemination of scientific research documents, whether they are published or not. The documents may come from teaching and research institutions in France or abroad, or from public or private research centers.

L'archive ouverte pluridisciplinaire **HAL**, est destinée au dépôt et à la diffusion de documents scientifiques de niveau recherche, publiés ou non, émanant des établissements d'enseignement et de recherche français ou étrangers, des laboratoires publics ou privés.



Distributed under a Creative Commons Attribution - NonCommercial 4.0 International License

High diversity of invasive *Haemophilus influenzae* isolates in France and the emergence of resistance to third generation cephalosporins by alteration of *ftsI* gene.

Ala-Eddine Deghmane^a, Eva Hong^a, Sara Chehboub^a, Aude Terrade^a, Michaël Falguières^a, Morgan Sort^a, Odile Harrison^b, Keith A. Jolley^b, and Muhamed-Kheir Taha^{a*}

^aInstitut Pasteur, Invasive Bacterial Infections Unit and National Reference Centre for Meningococci and *Haemophilus influenzae*, Paris, France

^bUniversity of Oxford, Department of Zoology, Oxford, UK

*Corresponding Author: Muhamed-Kheir Taha

mktaha@pasteur.fr

Tel+33 1 45 68 84 38

Keywords: Infection; *Haemophilus influenzae*; Typing; Whole genome sequencing; Antibiotic resistance

Running title: invasive *Haemophilus influenzae* infections

1 **Abstract**

2 **Background**

3 Invasive infections due to *Haemophilus influenzae* are infrequent following the
4 implementation of vaccination against *H. influenzae* of serotype b. However, their changing
5 epidemiology may not be clear due to a lack of appropriate genotyping methods combined
6 with antibiotic susceptibility analyses which do not discriminate invasive and non-invasive
7 isolates. We aimed to describe recent epidemiological trends of invasive *H. influenzae*
8 infections in France and explore the microbiological characteristics of invasive versus non-
9 invasive isolates.

10 **Methods**

11 All culture- and PCR-confirmed cases due to *H. influenzae* isolated from a sterile site, that
12 were received at the French national reference centre for *H. influenzae* during the year 2017
13 (n=138) were characterized by whole genome sequencing (WGS), serotyping and antibiotic
14 susceptibility testing. We also included 100 isolates that were received from non-invasive
15 infections.

16 **Findings**

17 Most of the non-invasive isolates were non-typeable (99%) and this proportion was
18 significantly less among invasive isolates 75%, $p < 0.0001$). Serotype f was the most frequently
19 observed but serotypes b and a were also present among invasive isolates. WGS analysis
20 suggested a serotype b to a capsule switching event. Non-typeable isolates showed extensive
21 heterogeneity. Antibiotic susceptibility testing indicated that 24% of the invasive isolates
22 were resistant to ampicillin but this percentage was significantly higher (51%, $p < 0.001$)
23 among the non-invasive isolates. Moreover, the proportion of beta-lactamase negative
24 ampicillin resistant isolates (BLNAR) was significantly higher among non-invasive isolates

compared to that of invasive isolates (24% versus 7%, $p < 0.001$). BLNAR isolates were linked to modification in the *ftsI* gene encoding the penicillin binding protein 3 (PBP3). In particular, *ftsI* alleles that harboured the mutations D350N, S357N, M377I and S385T were resistant to ampicillin and third generation cephalosporins. These isolates were more frequent among non-invasive isolates.

Interpretation

Our data suggest that invasive *H. influenzae* isolates differed phenotypically and genotypically from non-invasive isolates. The high proportion of ampicillin resistance by mutation in *ftsI* among non-invasive isolates may suggest a biological cost of these mutations on the function of PBP3 that can lead to lower bacterial invasiveness. WGS should be used routinely for the characterization of *H. influenzae* isolates in order to reliably follow the emergence, spread and mechanism of antibiotic resistance.

Introduction

Haemophilus influenzae (Hi) is a coccobacillus Gram negative bacterium that is most frequently encountered at the mucosal surfaces in humans (mainly respiratory pathways). Hi can provoke local infections at these mucosal surfaces such as otitis media, conjunctivitis, sinusitis and also genitourinary infections (1). Moreover, invasive *H. influenzae* invasive disease (IHiD) occurs when Hi invade the bloodstream and then spread to other distal organs. In Europe, the usual forms of IHiD are septicaemia. However, meningitis and more rarely, invasive pneumonia, epiglottitis, arthritis/osteomyelitis are reported (2-4).

Hi isolates are divided into two broad categories: encapsulated and **non-encapsulated** isolates. Capsule structure and antigenicity determine the serotype. Of the six identified serotypes (a to f), Hi of serotype b (Hib) is the most pathogenic in humans, affecting mainly infants and young children. **The introduction of the serotype b conjugate vaccine in the 1990s resulted in a considerable decline in the incidence of invasive Hib infections and reduced circulation of Hib isolates. The other serotypes (a, c, d, e and f) are less frequently associated with IHiD although serotype a is emerging in the USA and Canada (5, 6). Non-encapsulated** strains also called "non-typeable" Hi (NTHi), cause usually non-invasive infections of the upper respiratory tract, but can also be responsible for invasive infections (7). Asymptomatic carriage of NTHi strains in healthy children under 5 years of age is common (27.7% with a variation between 73.2% in winter and 26.8% in summer) (8). Carriage of encapsulated strains is rarer especially carriage of Hib in countries where Hib vaccination is included into national immunization schedules (9). In Europe, the total number of cases of IHiD was 2799 in 2014 (61% with a known serotype) with a trend to increasing numbers of reported cases from 2010 to 2014 (3, 4). The incidence is higher in infants (4 cases for 100,000) and in older adults (1.7 cases for 100,000).

In Europe in 2014, 6% of the cases with a known serotype were Hib, of which 57% were aged 25 years and older. [Non-encapsulated](#) strains caused the majority of cases in all age groups (82% of all cases for which serotyping results were available). Serotype f caused 9% of all cases and 72% of cases among non-B serotypes (serotypes a, c, d, e, and f) (4). The increase in the incidence of IHiD that is observed in Europe appears to be due to the increase in invasive NTHi and Hi infections in individuals over 60 years of age. These patients are not immunocompromized and yet they develop severe infections (10). Recent data suggest increasing virulence of these NTHi isolates as well as the acquisition of resistance to several antibiotics. In particular, resistance to beta-lactams seems to be driven by both the acquisition of a beta-lactamase and/or acquisition of well characterized mutations in the penicillin-binding-protein 3 (PBP3 encoded by the *ftsI* gene) (11). However, these isolates remained most frequently susceptible to third-generation cephalosporins. Resistance to third-generation cephalosporins was reported and suggested to be due to the acquisition of TEM-15 beta-lactamase, but the role of mutations in PBP3 is still unclear (12). Our aim was to screen all Hi isolates received at the French National Reference Centre for meningococci and *Haemophilus influenzae* during the year 2017 and characterize resistance to third-generation cephalosporins by whole genome sequencing.

Methods

Culture conditions and identification of *H. influenzae*.

IHiD reporting is not mandatory in France and sentinel surveillance is part of surveillance for invasive bacterial infections. IHiD is defined by the detection of Hi in a sterile site (such as blood, cerebrospinal fluid (CSF), or synovial fluid) by culture and/or PCR. Isolates that are identified as *H. influenzae* by hospitals can be sent to the National Reference Centre for meningococci and *Haemophilus influenzae* (NRCMHi) at the Institut Pasteur, Paris for further typing. Isolates were cultured on chocolate agar plates (BioMérieux, Marcy l'Etoile, France) and identification was confirmed based on the requirement for heme and NAD for growth on ordinary medium. In addition, a molecular identification algorithm was set up on the basis of PCR-amplification of four common genes (*hpd*, *ompP2*, *bexA*, *fucK*,) (13). PCR-based prediction of serotypes a, b, c, d, e and f was also performed for each strain (14). A typeable isolate was identified as positive by PCR for the five common genes and one of the serotype-specific genes. Non-typeable isolates were identified as positive by PCR for four of the common genes and negative for *bexA* gene and all of the serotype-specific PCRs (14). Real-time PCR was used to confirm the diagnosis of IHiD by the detection of the *hpd* gene and the specific gene for the six serotypes for non-culture cases (15). All of the primers used in this study are listed in the Supplementary Table 1

Antibiotic susceptibility testing

Susceptibility and resistance to antibiotics was performed using MHF agar plates (BioRad, Marnes-la-Coquette, France) and Etest strips (BioMérieux, Marcy l'Etoile, France). Critical values (breakpoints) were set according to the recommendation of the EU-CAST. Beta-lactams tested were ampicillin, amoxicillin+clavulanic acid and third generation cephalosporins (cefotaxim). Susceptibility to meropenem was occasionally performed upon the detection of resistance to cefotaxim.

Whole genome sequencing

WGS was performed systematically on all invasive cultured isolates received at the NRCMHi. Genomic DNA was extracted with the MagNA Pure 96 system (Roche Molecular System, Pleasanton, USA). Library preparation were performed with the Nextera® XT DNA library Preparation Kit (Illumina, San Diego, USA) and whole genome sequencing was processed with Illumina technology (NextSeq 500, Illumina) with paired-end strands of 150 bp and a sequencing depth of 50X. All *de novo* assemblies were generated using SPAdes 3.10 (CAB, St. Petersburg State University, Russia). Sequences are available through the PubMLST <https://pubmlst.org/hinfluenzae/database> (16). WGS data were used to infer sequence types (ST) according to the Multilocus Sequence Typing (MLST) scheme (17). WGS data were also analysed using a “gene-by-gene” approach using the annotated reference strain (Rd KW20) on the Bacterial Isolate Genome Sequence Database (BIGSdb) platform on PubMLST (18). SplitsTree4 (version 4.14.6) was used to visualise the resulting distance matrices as Neighbour-net networks. (19) GrapeTree was also drawn on the basis of comparisons of allelic profiles for the isolates with complete MLST data (20). IDs of all these isolates are given in the supplementary Table 2 to allow retrieving of WGS sequences in FASTA formats as well as the ENA accession numbers (project accession N° PRJEB28646).

Molecular analysis of the *ftsI* gene

Sequences of a 621-bp fragment of *ftsI* gene (encoding the PBP3), corresponding to nucleotides 977-1597 relative to the *ftsI* start codon, were used to assign alleles for the corresponding isolates through the PubMLST database and analysed through the tools available on the BIGSdb platform. Sequences were aligned using Multiple Sequence Alignment by CLUSTALW and sequences differing by at least one nucleotide were assigned

a unique *ftsI* allele sequence number. Phylogenetic networks were generated using SplitsTree (version 4.14.6) (www.splitstree.org) with default parameters (19).

Data analysis

Proportions were compared using Chi-square test or Fisher exact test using the threshold of p -value < 0.05 as statistically significant.

Results

Description of the isolates

During the year 2017, the NRCMHi received a total of 236 Hi cultured isolates in addition to 2 CSF that were confirmed only by PCR. There were 100 cultured isolates from non-invasive sites of which (88/100, 88%) isolates were from respiratory sites (including nasopharynx, sinus, ear and conjunctiva) and 12 isolates were from genito-urinary sites (most frequently vagina). Most of these non-invasive isolates (74/100; 74%) were from adults. All the non-invasive isolates were non-typeable except one isolate of serotype f.

There were 138 invasive cases (136 invasive cultured isolates and 2 non-culture PCR-confirmed cases) that were mainly confirmed from blood (96/138; 70%) and CSF (36/138; 26%). The remaining isolates (6/138; 4%) were from synovial fluid, peritoneal fluid and organ biopsies. Most of the cases (84/138; 61%) were among children <5 years of age (40/138; 29%) and among adults > 64 years (44/138; 32%). The male-to-female ratio was 1.3:1. Age and serotype distributions of invasive isolates are depicted in Fig.1. Most of the cases corresponded to non-typeable isolates (103/138; 75%) and 35/138 invasive cases were typeable (25%, $p < 0.0001$ when compared to 1% of the non-invasive isolates). Detected serotypes were serotype a (Hia $n=7$ mainly among children <5 years) serotype b (Hib $n=10$), serotype d (Hid $n=1$), serotype e (Hie $n=5$ of which 1 case was PCR-confirmed only) and serotype f (Hif $n=12$). Serotypeable isolates were more likely to be detected under the age of 5 years than other age groups (17/40; 43% versus 10/44 23%; $p=0.018$).

Antibiotic susceptibility testing

Among the 136 invasive cultured isolates, (104/136; 76%) were beta lactamase negative ampicillin susceptible (BLNAS), (23/136; 17%) were beta lactamase positive ampicillin resistant (BLPAR) and (9/136; 7%) were beta lactamase negative ampicillin resistant

(BLNAR) (Table 1). Invasive typeable isolates were more frequent among BLNAS isolates (30/104; 29% of all BLNAS invasive isolates were typeable) than BLPAR or BLNAR (4/32; 13% of all BLPAR and BLNAR invasive isolates were typeable) although this difference was not significant. It is noteworthy that none of the invasive typeable isolates were BLNAR and all the 4 ampicillin resistant typeable isolates (2 Hib and 2 Hie) were BLPAR (Table 1). Of interest, 8 invasive isolates were resistant to cefotaxim (MIC >0.125 mg/L). These isolates were BLNAS (n=2), BLPAR (n=2) and BLNAR (n=4). They were all nontypeable except two isolates of serotype b (BLPAR) and e (BLNAS).

Antibiotic susceptibility testing showed that only 49 of the non-invasive isolates were susceptible to ampicillin with no detection of beta lactamase (BLNAS). However, 51 of the non-invasive isolates were resistant to ampicillin (MIC>1 mg/L). The proportion of ampicillin resistant isolates was significantly higher among non-invasive isolates compared to invasive isolates (51/100; 51% versus 32/136; 24% respectively, p<0.001). Among the 51 ampicillin resistant non-invasive isolates, 27 isolates produced detectable beta-lactamase (BLPAR) and 24 did not (BLNAR). All these ampicillin resistant non-invasive isolates were NTHi while the serotype f non-invasive isolate was susceptible to all beta-lactams tested. Of interest, 29 non-invasive isolates were resistant to cefotaxim (MIC >0.125 mg/L). These isolates were BLNAS (n=4), BLPAR (n=9) and BLNAR (n=16). The proportions of BLNAS and BLNAR, but not that of BLPAR, differed significantly between the non-invasive and invasive isolates (p=0.0111, p=0.0002 and p=0.1683 respectively). Serotyping and antibiotic susceptibility testing clearly suggest that invasive and non-invasive isolates differed significantly.

Genomic analysis of the invasive isolates

We next focused on the genetic typing of the isolates. Whole genome sequences (Illumina) were obtained for 130 of the 136 invasive cultured isolates (96%) and complete MLST schemes were retrieved for (126/130 isolates; 97% of all isolates with WGS data), while

partial MLST profiles were obtained for the 4 other isolates. There were 73 different STs identified among the 126 invasive isolates with ST-124 the most frequent (n=10) followed by ST-6 (n=8) and ST-388 (n=5).

MLST data were also obtained for 34 of the 100 non-invasive isolates and these belonged to 27 different STs. GrapeTree analysis using MLST allelic profiles is depicted in Fig. 2. The STs were diverse and were represented by no more than three isolates (for ST-107), which was distinct to the non-invasive isolates, with only 14 STs shared with the invasive isolates (STs 1, 3, 12, 57, 124, 155, 159, 160, 266, 388, 396, 513, 836 and 1877) (Fig. 2). Several of these “mixed” nodes were composed of only BLPAR isolates (STs 160, 388 and 836). Serotype b isolates were all invasive and located in two clusters one of which containing most of the Hib isolates (ST-6 and ST-95). Interestingly, one serotype a isolate was ST-6 and clustered with serotype b isolates suggesting a possible b to a capsule switching event and genetic recombination between serotype a and b isolates. All of the other serotype a isolates clustered separately and were predominantly ST-23 (n=3). Serotype f isolates clustered together with more homogeneity (Fig. 2).

These results suggest a lack of correlation between serotype and genetic lineage among invasive isolates. These data also indicate that non-invasive isolates differed from invasive isolates not only phenotypically but also by MLST.

We next analysed WGS data from the 130 invasive isolates using the “Genome Comparator” tool on PubMLST (16) and using the serotype d strain *H. influenzae* Rd KW20 as a reference (21). The neighbour network showed a highly diverse non-typeable bacterial population and to a lesser extent for typeable isolates (Fig. 3). Much more resolution was obtained compared to the MLST analysis as several identical sequence types were further separated into different related nodes. The serotype a isolate (ST-6) was clustered with the other ST-6 isolates of serotype b. Moreover, serotype a and b isolates (ST-6) (Fig. 3).

Sequence data of *ftsI*

A 621 bp nucleotide sequence fragment of the *ftsI* gene was extracted for 131 of the invasive isolates. This segment of *ftsI* corresponds to the region between the codons 326 and 533 that includes the DNA sequences encoding the three functional motifs of the PBP3: STVK, SSN, and KTG that start at positions 327, 379 and 512 respectively. These sequences allowed the identification of 43 different *ftsI* alleles that were named *ftsIn* where *n* is the number of the allele. Frequencies of isolates harbouring these alleles varied from 1 to 20 isolates per allele and are available through the link <https://pubmlst.org/hinfluenzae/> through the sequence query drop menu. These 43 alleles corresponded to 21 different amino-acid sequences (Table 2). The phylogenetic tree drawn by SplitsTree4 was based on the CLUSTALW DNA sequence alignment of these 43 *ftsI* alleles and indicates a clustering of these alleles into 4 groups (Fig. 4, each group is referred by a colour). Group 1 contained the two most frequent alleles *ftsI10* and *ftsI8* (20 and 15 isolates respectively). These two alleles shared 99.5% sequence identity (3 polymorphic sites). Moreover, translated amino acid sequences were identical for both alleles and this protein sequence was also identical for 13 other *ftsI* alleles (Fig. 4). These 15 alleles were present in (74/131; 56%) isolates that belonged to different genetic groups and different serotypes (a, b and d as well as among non-typeable isolates). The unique amino acid sequence for all these 15 alleles showed no known modification associated with non-beta-lactamase mediated resistance to ampicillin. However, 14 isolates harboured a beta-lactamase and were therefore (BLPAR). The remaining 60 isolates were all BLNAS with MIC ranging between 0.016 and 0.5 mg/L (Table 3). All isolates were susceptible to third generation cephalosporins.

Group 2 consisted of 11 *ftsI* alleles which clustered together on the phylogenetic tree separately from Group 1. These 11 alleles corresponded to 6 unique amino-acid sequences

269 that were shared by 31 invasive isolates (31/131; 24%). Isolates were of different phenotypes
270 (non-typeable and serotypes e and f) and belonged to different STs. Five of these isolates also
271 harboured a beta-lactamase (BLPAR). The 26 isolates that were negative for the beta-
272 lactamase were also all susceptible to ampicillin (BLNAS). Indeed, the MIC of ampicillin for
273 these 26 isolates ranged from 0.032 mg/L to 0.5 mg/L (Table 3). All isolates were susceptible
274 to third generation cephalosporins. The PBP3 amino acid sequences of this group harboured
275 one of the following alterations D350N, A368T, A437S, A502T, and R517H but the alleles
276 *ftsI50* and *ftsI94* harboured two alterations (D350N, A437S and D350N, R517H) respectively.
277 However, no alleles showed alteration at the position N526.

278 Group 3 was composed of *ftsI* 10 alleles that corresponded to 8 unique amino-acid sequences
279 shared by 17 invasive isolates (17/131; 13%). Isolates were all non-typeable but belonged to
280 different STs. All of these amino-acid sequences showed a N526K alteration with other
281 variably present alterations. One isolate also harboured a beta-lactamase (BLPAR). The 16
282 other isolates that were negative for the beta-lactamase showed MIC of ampicillin ranging
283 from 0.190 mg/L to 2 mg/L (Table 3). They were BLNAS (11/16 with MIC of ampicillin
284 ranging between 0.380 and 1 mg/L) and 5/16 isolates were BLNAR (MIC of ampicillin >1
285 mg/L and ranged between 1.5 to 2 mg/L). These five isolates harboured *ftsI1*, *ftsI5*, *ftsI21* or
286 *ftsI42*. All of the 17 isolates in this group were susceptible to third generation cephalosporins
287 (Table 3).

288 Finally, group 4 was also identified on the *ftsI*-based phylogenetic tree. This group contained
289 7 highly diverse *ftsI* alleles when compared to the other alleles. These 7 alleles corresponded
290 to 6 unique amino-acid sequences that were shared by 9 invasive isolates (9/131; 7%). The
291 isolates belonged to 8 different STs and were non-typeable but two were of serotypes b or e.
292 Two of these 9 isolates were BLPAR while the 7 other isolates were BLNAS (n=3) and
293 BLNAR (n=4). All 9 isolates of this group were resistant to third generation cephalosporins

(MIC >0.125 mg/L) (Table 3). All these PBP3 encoded by these 7 alleles showed the following four mutations (D350N, S357N, M377I and S385T) with other mutations that were variably present including the N526K mutation (Table 2). These isolates were heterogeneous and corresponded to several genotypes (indicated by arrows in Fig. 3).

We also obtained 57 *ftsI* sequences from carriage isolates that were distributed among 36 different *ftsI* alleles of which 17 were only found among carriage isolates. The alleles were represented by no more than 4 isolates (4 isolates for *ftsI10* and *ftsI19*). The four groups described among the invasive isolates were also observed among non-invasive isolates but with different proportions for group 1 to group 4 that were respectively 30%, 3%, 23% and 44%. All the isolates were susceptible to meropenem including those that were resistant to cefotaxime.

Discussion

IHiD has become rare since the introduction of the conjugate vaccine against Hib. The incidence in Europe is around 0.49 per 100,000 population. By extrapolation to the French population we expect that the 138 IHiD that we characterized in the present work represent around 40% of all IHiD cases. Age and sex distributions were similar to other European countries with higher number of cases in children under five years and in adults aged 65 years or older. The non-typeable isolates were the most frequent in all age groups as also reported in Europe (4) .

Moreover, non-invasive infection mainly in the upper respiratory tract infections and otitis media are frequent. Our data clearly suggest that the distribution of serotypes and antibiotic susceptibility profiles were significantly different between invasive and non-invasive infections. This was further strengthened by the MLST data. These observations warrant separate typing and analysis of Hi isolates. Serotypeable isolates are almost exclusively encountered among invasive isolates and were less diverse than non-typeable isolates as suggested by MLST and WGS analysis. This is in line with previous observations by MLST that suggested that the impact of recombination is greater among non-typeable than encapsulated isolates explaining the high diversity of these isolates(17). Serotype f was the most frequent. However, it is worthy to underline the presence of serotype a of the sequence type ST-23 that was mostly among < 5 years of age as reported in Alaska and in Canada (5, 6). A serotype a isolate (isolated from an adult >64 years) shared the same ST (ST-6) as Hib isolates and was also linked to those isolates on the basis of WGS analysis. Our data also suggest frequent DNA recombination between isolates of serotypes a and b as also suggested by the neighbour network on the basis of WGS analysis. Implementation of routine WGS is therefore warranted to perform thorough surveillance and detect events such as the capsule switching.

343 Additionally, the proportion of BLNAS isolates differed significantly between invasive and
344 non-invasive isolates (76% versus 49% $p=0.011$). This difference may reflect the selective
345 pressure by repeated exposure of non-invasive isolates to antibiotics in the respiratory tract.
346 However, the BLPAR did not significantly differ between the two groups of isolates while the
347 proportions of BLNAR did. Indeed, BLNAR isolates were significantly less frequently
348 encountered among invasive isolates (Table 2). BLNAR isolates usually harbour
349 modifications of *ftsI* encoding the PBP3 that is involved in the biosynthesis of peptidoglycan
350 (PG) catalysing peptide cross-linking of PG chains. PBP3 is therefore an essential protein for
351 cell division (divisome) (22). Modifications of PBP3 impact on the structure of PG that is a
352 microbe associated molecular pattern (MAMP). These observations are in favour of biological
353 cost of the modifications of *ftsI* gene encoding the PBP3 that can lead to lower bacterial
354 invasiveness. This has been suggested for the modifications of PBP2 in *Neisseria meningitidis*
355 that is also involved in PG cross-linking (23). PBP2 modifications in *N. meningitidis* is also
356 responsible for reduced susceptibility to penicillin G, a phenotype that is more frequently
357 observed among non-invasive isolates (24).

358 Our *ftsI* sequence data shed new light on the correlation of the mutations of this gene and the
359 resistance to beta-lactam antibiotics. The role of the mutations in the region close to the three
360 functional motifs of the PBP3(STVK, SSN, and KTG) needs to be evaluated among beta-
361 lactamase negative isolates. We further suggest a classification based on the correlation of the
362 amino acid sequence of PBP3 and the geometric mean of the MIC of ampicillin for isolates in
363 each of the four phylogenetic groups identified on the basis of *ftsI* sequence. Our data suggest
364 that mutations in PBP3 have a cumulated effect to raise the MIC of ampicillin. However,
365 several mutations when present alone (D350N, A368T, A437S, A520T, and R517H) or in
366 combination of 2 mutations (D350N and A437S or D350N and R517H) did not confer

resistance to ampicillin. Indeed our group 2 corresponds to the group 1 according to the classification of Ubukata and Dabernat (25, 26).

Our data suggest that the mutation N526K (that was absent in the second group) is necessary to confer resistance to ampicillin. The presence of other mutation (particularly A502V) was not consistent. Isolates of this third group showed significant increase in their MIC of ampicillin and we suggest this group to correspond to BLNAR.

The forth group corresponded to isolates that all harboured the following three mutations D350N, S357N and M377 and showed BLNAR phenotype that was also associated with resistance to third generation cephalosporins that we suggest to be named beta lactamase negative ampicillin and cephalosporin resistance isolates (BLNACR). The high proportions of ampicillin resistant isolates among both invasive and non-invasive isolates (24% and 51% respectively) may suggest that the use of ampicillin or amoxicillin as a first line treatment in *Haemophilus* infections (e.g; acute otitis media, AOM) is not supported by the molecular and phenotypic data in this study (27). Indeed, NTHi was reported to be the most frequent agent in AOM after the introduction of the 13-Valent Pneumococcal Conjugate Vaccine (28). However, the surveillance of these isolates and the surveillance of the emergence of the resistance to third generation cephalosporins require the use of molecular tools (*ftsI* sequencing) in addition to the antibiotic susceptibility testing in order to reliably characterize these isolates.

Acknowledgements

This publication made use of the *Haemophilus influenzae* Multi Locus Sequence Typing website (<https://pubmlst.org/>) developed by Keith Jolley and sited at the University of Oxford(18). The development of this site has been funded by the Wellcome Trust. We also acknowledge the PIBNET-P2M platform at the Institut Pasteur. This work was funded by The Institut Pasteur and Santé Publique France.

References

1. Casin I, Sanson-Le Pors MJ, Felten A, Perol Y. Biotypes, serotypes, and susceptibility to antibiotics of 60 *Haemophilus influenzae* strains from genitourinary tracts. *Genitourin Med.* 1988 Jun;64(3):185-8. PubMed PMID: 2970427. Pubmed Central PMCID: 1194197. Epub 1988/06/01. eng.
2. Takala AK, Eskola J, Peltola H, Makela PH. Epidemiology of invasive *Haemophilus influenzae* type b disease among children in Finland before vaccination with *Haemophilus influenzae* type b conjugate vaccine. *Pediatr Infect Dis J.* 1989 May;8(5):297-302. PubMed PMID: 2657619. Epub 1989/05/01. eng.
3. ECDC. Surveillance of invasive bacterial diseases in Europe, 2012. Stockholm: ECDC, 2015.
4. ECDC. European Centre for Disease Prevention and Control. Annual Epidemiological Report 2016 – Invasive *Haemophilus influenzae* disease. Stockholm: ECDC, 2016.
5. Bruce MG, Deeks SL, Zulz T, Navarro C, Palacios C, Case C, et al. Epidemiology of *Haemophilus influenzae* serotype a, North American Arctic, 2000-2005. *Emerg Infect Dis.* 2008 Jan;14(1):48-55. PubMed PMID: 18258076. Pubmed Central PMCID: 2600153. Epub 2008/02/09. eng.
6. Soeters HM, Blain A, Pondo T, Doman B, Farley MM, Harrison LH, et al. Current Epidemiology and Trends in Invasive *Haemophilus influenzae* Disease-United States, 2009-2015. *Clin Infect Dis.* 2018 Aug 31;67(6):881-9. PubMed PMID: 29509834. Epub 2018/03/07. eng.
7. Murphy TF, Faden H, Bakaletz LO, Kyd JM, Forsgren A, Campos J, et al. Nontypeable *Haemophilus influenzae* as a pathogen in children. *Pediatr Infect Dis J.* 2009 Jan;28(1):43-8. PubMed PMID: 19057458. Epub 2008/12/06. eng.
8. Ortiz-Romero MDM, Espejo-Garcia MP, Alfayate-Miguel S, Ruiz-Lopez FJ, Zapata-Hernandez D, Gonzalez-Pacanowska AJ. Epidemiology of Nasopharyngeal Carriage by *Haemophilus influenzae* in Healthy Children: A Study in the Mediterranean Coast Region. *Pediatr Infect Dis J.* 2017 Oct;36(10):919-23. PubMed PMID: 28472007. Epub 2017/05/05. eng.
9. Hammitt LL, Crane RJ, Karani A, Mutuku A, Morpeth SC, Burbidge P, et al. Effect of *Haemophilus influenzae* type b vaccination without a booster dose on invasive H influenzae type b disease, nasopharyngeal carriage, and population immunity in Kilifi, Kenya: a 15-year regional surveillance study. *Lancet Glob Health.* 2016 Mar;4(3):e185-94. PubMed PMID: 26853149. Pubmed Central PMCID: 4763163. Epub 2016/02/09. eng.
10. Resman F, Ristovski M, Ahl J, Forsgren A, Gilsdorf JR, Jasir A, et al. Invasive disease caused by *Haemophilus influenzae* in Sweden 1997-2009; evidence of increasing incidence and clinical burden of non-type b strains. *Clin Microbiol Infect.* 2011 Nov;17(11):1638-45. PubMed PMID: 21054663. Epub 2010/11/09. eng.
11. Mansson V, Skaare D, Riesbeck K, Resman F. The spread and clinical impact of ST14CC-PBP3 type IIb/A, a clonal group of non-typeable *Haemophilus influenzae* with chromosomally mediated beta-lactam resistance-a prospective observational study. *Clin Microbiol Infect.* 2017 Mar;23(3):209 e1- e7. PubMed PMID: 27852000. Epub 2016/11/17. eng.
12. Caierao J, Sant'Anna FH, Hawkins P, Cunha GR, Mott M, Falci DR, et al. Characteristics of serogroup 20 *S.pneumoniae* isolates from Brazil. *BMC Infect Dis.* 2016 Aug 15;16(1):418. PubMed PMID: 27527077. Pubmed Central PMCID: 4986405. Epub 2016/08/17. eng.
13. Binks MJ, Temple B, Kirkham LA, Wiertsema SP, Dunne EM, Richmond PC, et al. Molecular surveillance of true nontypeable *Haemophilus influenzae*: an evaluation of PCR screening assays. *PLoS One.* 2012;7(3):e34083. PubMed PMID: 22470516. Pubmed Central PMCID: 3314702. Epub 2012/04/04. eng.
14. Falla TJ, Crook DW, Brophy LN, Maskell D, Kroll JS, Moxon ER. PCR for capsular typing of *Haemophilus influenzae*. *J Clin Microbiol.* 1994 Oct;32(10):2382-6. PubMed PMID: 7814470.
15. Wang X, Mair R, Hatcher C, Theodore MJ, Edmond K, Wu HM, et al. Detection of bacterial pathogens in Mongolia meningitis surveillance with a new real-time PCR assay to detect *Haemophilus influenzae*. *Int J Med Microbiol.* 2011 Apr;301(4):303-9. PubMed PMID: 21276750. Epub 2011/02/01. eng.

16. Jolley KA, Bray JE, Maiden MCJ. Open-access bacterial population genomics: BIGSdb software, the PubMLST.org website and their applications. Wellcome Open Res. 2018;3:124. PubMed PMID: 30345391. Pubmed Central PMCID: 6192448. Epub 2018/10/23. eng.
17. Meats E, Feil EJ, Stringer S, Cody AJ, Goldstein R, Kroll JS, et al. Characterization of encapsulated and noncapsulated *Haemophilus influenzae* and determination of phylogenetic relationships by multilocus sequence typing. J Clin Microbiol. 2003 Apr;41(4):1623-36. PubMed PMID: 12682154.
18. Jolley KA, Maiden MC. BIGSdb: Scalable analysis of bacterial genome variation at the population level. BMC Bioinformatics. 2010;11:595. PubMed PMID: 21143983. Pubmed Central PMCID: 3004885. Epub 2010/12/15. eng.
19. Huson DH, Bryant D. Application of phylogenetic networks in evolutionary studies. Mol Biol Evol. 2006 Feb;23(2):254-67. PubMed PMID: 16221896.
20. Zhou Z, Alikhan NF, Sergeant MJ, Luhmann N, Vaz C, Francisco AP, et al. GrapeTree: visualization of core genomic relationships among 100,000 bacterial pathogens. Genome Res. 2018 Sep;28(9):1395-404. PubMed PMID: 30049790. Pubmed Central PMCID: 6120633. Epub 2018/07/28. eng.
21. Fleischmann RD, Adams MD, White O, Clayton RA, Kirkness EF, Kerlavage AR, et al. Whole-genome random sequencing and assembly of *Haemophilus influenzae* Rd. Science. 1995 Jul 28;269(5223):496-512. PubMed PMID: 7542800. Epub 1995/07/28. eng.
22. Sauvage E, Kerff F, Terrak M, Ayala JA, Charlier P. The penicillin-binding proteins: structure and role in peptidoglycan biosynthesis. FEMS Microbiol Rev. 2008 Mar;32(2):234-58. PubMed PMID: 18266856.
23. Zarantonelli ML, Skoczynska A, Antignac A, El Ghachi M, Deghmane AE, Szatanik M, et al. Penicillin resistance compromises Nod1-dependent proinflammatory activity and virulence fitness of *Neisseria meningitidis*. Cell Host Microbe. 2013 Jun 12;13(6):735-45. PubMed PMID: 23768497. Epub 2013/06/19. eng.
24. Lemee L, Hong E, Etienne M, Deghmane AE, Delbos V, Terrade A, et al. Genetic diversity and levels of expression of factor H binding protein among carriage isolates of *Neisseria meningitidis*. PLoS One. 2014;9(9):e107240. PubMed PMID: 25247300. Pubmed Central PMCID: 4172500. Epub 2014/09/24. eng.
25. Dabernat H, Delmas C, Seguy M, Pelissier R, Faucon G, Bennamani S, et al. Diversity of beta-lactam resistance-conferring amino acid substitutions in penicillin-binding protein 3 of *Haemophilus influenzae*. Antimicrob Agents Chemother. 2002 Jul;46(7):2208-18. PubMed PMID: 12069976.
26. Ubukata K, Shibasaki Y, Yamamoto K, Chiba N, Hasegawa K, Takeuchi Y, et al. Association of amino acid substitutions in penicillin-binding protein 3 with beta-lactam resistance in beta-lactamase-negative ampicillin-resistant *Haemophilus influenzae*. Antimicrob Agents Chemother. 2001 Jun;45(6):1693-9. PubMed PMID: 11353613.
27. Leung AKC, Wong AHC. Acute Otitis Media in Children. Recent Pat Inflamm Allergy Drug Discov. 2017;11(1):32-40. PubMed PMID: 28707578. Epub 2017/07/15. eng.
28. Ubukata K, Morozumi M, Sakuma M, Takata M, Mokuno E, Tajima T, et al. Etiology of Acute Otitis Media and Characterization of Pneumococcal Isolates After Introduction of 13-Valent Pneumococcal Conjugate Vaccine in Japanese Children. Pediatr Infect Dis J. 2018 Jun;37(6):598-604. PubMed PMID: 29474258. Epub 2018/02/24. eng.

Table 1 Distribution of the invasive and non-invasive cultured isolates according to their susceptibility to ampicillin and to their serotypes.

Serotypes (invasive isolates)	a	b	d	e	f	All typeable	NT	All	MIC50	MIC90	RANGE	Geometric mean MIC	95% CI
Ampicillin susceptible (BLNAS)	7	8	1	2	12	30	74	104	0.25	0.5	0.016 - 1	0.264	0.231 - 0.302
Ampicillin resistant (All)	0	2	0	2	0	4	28	32	12	256	1.5 - 256	20.31	9.168-45.01
BLNAR	0	0	0	0	0	0	9	9	1.5	256	1.5 - 256	2.831	0.770-10.41
BLPAR	0	2	0	2	0	4	19	23	64	256	2 - 256	43.92	19.33-99.83
Serotypes (non-invasive isolates)	a	b	d	e	f	All typeable	NT	All	MIC50	MIC90	RANGE	Geometric mean MIC	95% CI
Ampicillin susceptible (BLNAS)	0	0	0	0	1	1	48	49	0.38	0.5	0.064 - 1	0.399	0.335 - 0.474
Ampicillin resistant (All)	0	0	0	0	0	0	51	51	8	256	1.5-256	16.34	9.894 - 30.01
BLNAR	0	0	0	0	0	0	24	24	2	256	1.5 - 12	2.351	1.857 -2.977
BLPAR	0	0	0	0	0	0	27	27	256	256	6 - 256	91.5	51.27 - 163

Table 2. Mutations and groups of *ftsI* (group1 in black, group2 in blue, group3 in green and group4 in red)

allele id	D350N	S357N	A368T	M377I	S385T/N	L389F	A437S	I449V	G490E	A502T/V	R517H	N526K
4 ^a	NO	NO	NO	NO	NO	NO	NO	NO	NO	NO	NO	NO
6 ^b	D350N	NO	NO	NO	NO	NO	NO	NO	NO	NO	NO	NO
28	NO	NO	A368T	NO	NO	NO	NO	NO	NO	NO	NO	NO
41	NO	NO	NO	NO	NO	NO	NO	NO	NO	A502T	NO	NO
50 ^c	D350N	NO	NO	NO	NO	NO	A437S	NO	NO	NO	NO	NO
52 ^d	NO	NO	NO	NO	NO	NO	NO	NO	NO	NO	R517H	NO
94	D350N	NO	NO	NO	NO	NO	NO	NO	NO	NO	R517H	NO
5	NO	NO	NO	NO	NO	NO	NO	I449V	NO	NO	NO	N526K
20	NO	NO	NO	NO	NO	NO	NO	NO	NO	NO	NO	N526K
1 ^e	D350N	NO	NO	M377I	NO	NO	NO	NO	NO	A502V	NO	N526K
21	NO	NO	NO	NO	NO	NO	NO	NO	NO	A502T	NO	N526K
11	D350N	NO	NO	NO	NO	NO	NO	NO	NO	A502V	NO	N526K
23	D350N	NO	NO	M377I	NO	NO	NO	NO	G490E	A502V	NO	N526K
42 ^f	NO	NO	NO	NO	NO	NO	NO	NO	G490E	A502V	NO	N526K
91	NO	NO	NO	NO	NO	NO	NO	NO	G490E	NO	NO	N526K
40	D350N	S357N	NO	M377I	S385T	L389F	NO	NO	NO	NO	NO	N526K
87	D350N	S357N	NO	M377I	S385T	L389F	NO	NO	NO	NO	NO	N526K
16	D350N	S357N	NO	M377I	S385T	L389F	NO	NO	NO	A502T	NO	N526K
19	D350N	S357N	NO	M377I	S385T	L389F	NO	NO	G490E	NO	NO	N526K
32 ^g	D350N	S357N	NO	M377I	S385T	NO	NO	NO	NO	NO	R517H	NO
26	D350N	S357N	NO	M377I	S385T	L389F	NO	NO	NO	NO	R517H	NO

^a The following alleles also shared the same amino-acid sequence as the allele 4 (8, 10, 15, 18, 27, 29,31, 35, 37, 46, 53, 59, 63 and 99).

^b The following alleles also shared the same amino-acid sequence as the allele 6 (12, 39 and 55).

^c Allele 54 shared the same amino-acid sequence as the allele 50.

^d Allele 101 shared the same amino-acid sequence as the allele 52.

^e Allele 96 shared the same amino-acid sequence as the allele 1.

^f Allele 47 shared the same amino-acid sequence as the allele 42.

^g Allele 33 shared the same amino-acid sequence as the allele 32.

Table 3. MIC of beta-lactam antibiotics according to the group of *ftsI* sequence among invasive beta lactamase negative isolates

<i>ftsI</i> groups	Antibiotics	Number of isolates	Minimum MIC	Maximum MIC	Geometric mean of MIC	95% CI of geometric mean
Group1	Ampicillin	60	0.016	0.500	0.214	0.181-0.254
Group2		26	0.032	0.500	0.270	0.220-0.332
Group3		16	0.190	2.000	0.868	0.619-1.216
Group4		7	0.500	256.0	2.192	0.302-15.92
Group1	Amoxicillin	60	0.016	1.000	0.455	0.373-0.554
Group2		26	0.094	1.000	0.520	0.423-0.640
Group3		16	0.380	6.000	1.857	1.306-2.640
Group4		7	0.750	48.00	3.394	0.775-14.85
Group1	Amoxicillin+ Clavulanic acid	60	0.016	5.000	0.461	0.373-0.571
Group2		26	0.094	1.000	0.496	0.408-0.603
Group3		16	0.750	4.000	1.719	1.303-2.268
Group4		7	0.500	256.0	3.536	0.482-25.93
Group1	Cefotaxim	60	0.002	0.047	0.0145	0.012-0.017
Group2		26	0.003	0.064	0.0255	0.020-0.032
Group3		16	0.008	0.094	0.045	0.033-0.062
Group4		7	0.125	0.750	0.316	0.162-0.617

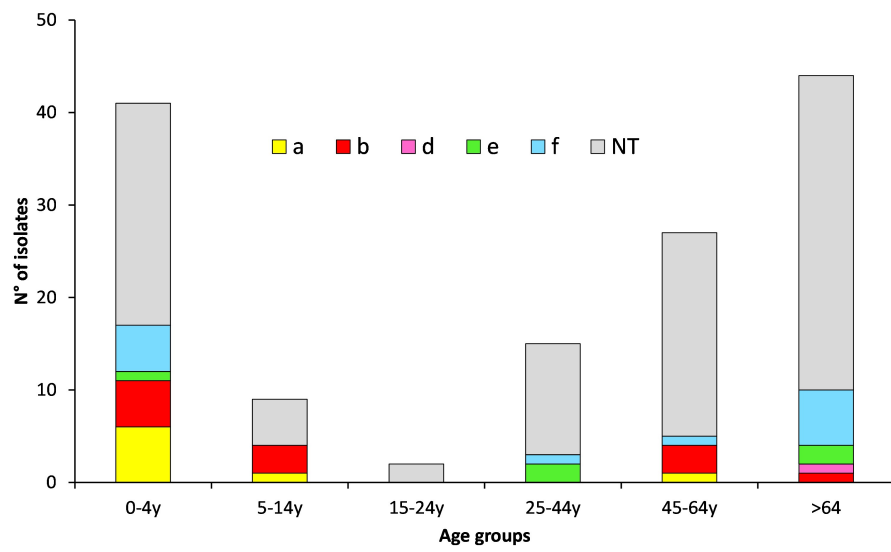


Figure 1.

Distribution of invasive isolates according to groups of age and serotypes

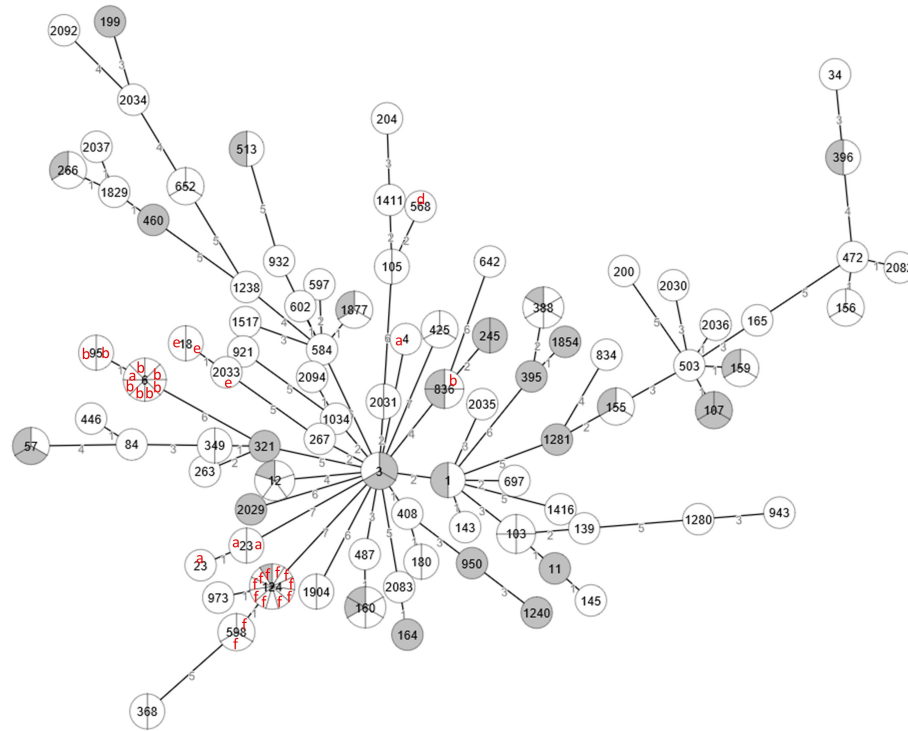


Figure. 2

A grapeTree based on the 7 MLST loci from 122 genome of invasive and the 34 carriage isolates of *H. influenzae* from this study. The nodes were drawn to scale according to the number of isolates (indicated by the pie chart) of each node. The white node corresponded to invasive isolates and the grey nodes to non-invasive isolates. When the isolates were typeable, serotypes were shown by the corresponding letters in red. The other isolates (no indication) were nontypeable. The ST corresponding to each node was indicated inside the node. UA (Unassigned) corresponded to ST with non-assigned ST in the PUBMLST. The branches between the nodes were drawn to scale and the number of different alleles between the two connected nodes is indicated on the branch.

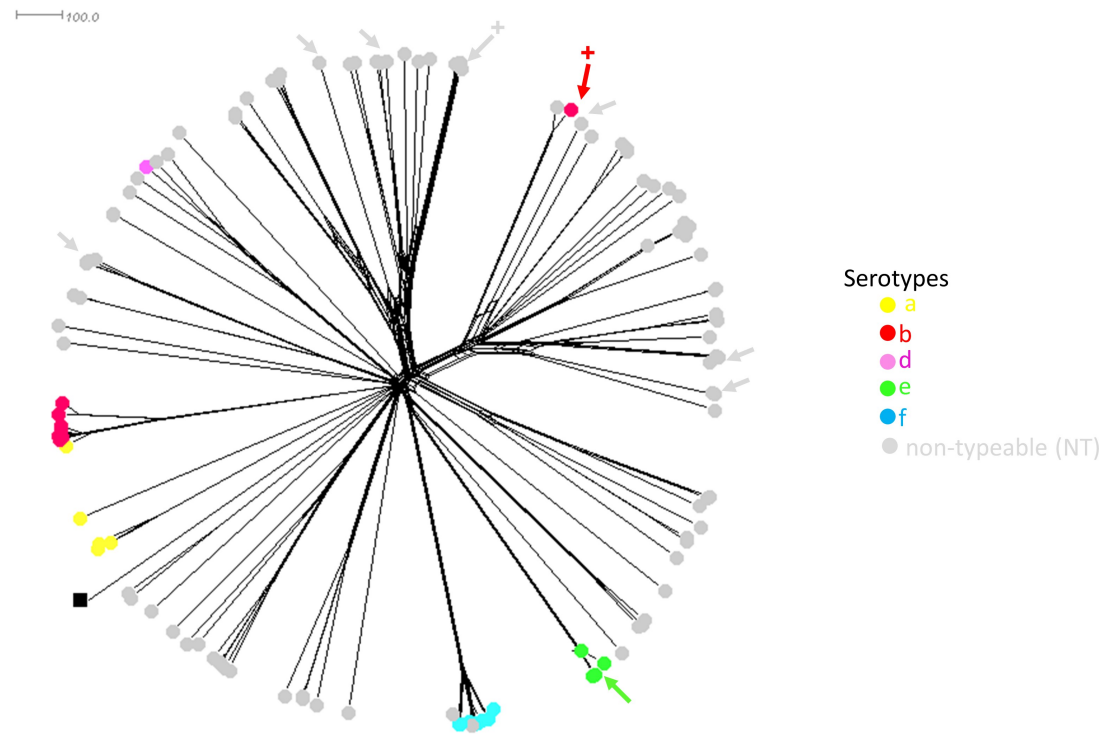


Figure 3.

A neighbour-network based on allelic profiles all the 130 invasive isolates compared to the annotated loci of the reference strain Rd KW20 (black square). Individual isolate is represented by circles and the colour of the circle indicates the serotype of the corresponding isolate. The arrows indicate cefotaxim resistant isolates (colours of the arrows are according to serotypes) that all belonged to group 4 *ftsI* (see Table 2). (+) indicate that the corresponding cefotaxim resistant isolate also produces a beta-lactamase.

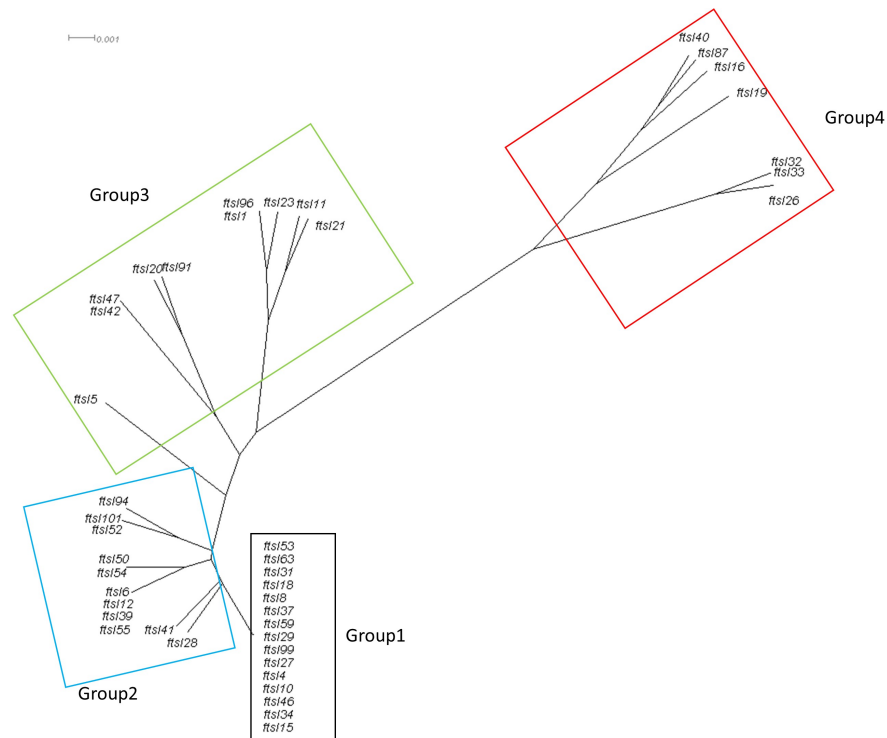


Figure 4.

Phylogenetic Tree of the *ftsI* based on the sequence CLUSTALW multiple alignment of amino-acid sequences deduced of the DNA sequences of all *ftsI* alleles defined among the invasive isolates of this study. The tree was visualized by SplitsTree4 as described in the Methods section. The 4 *ftsI* groups described in this study are shown in rectangles (colours are according to Table 2).