



HAL
open science

Peptidoglycan and Nod Receptor

Richard Wheeler, Frédéric Veyrier, Catherine Werts, Ivo Gomperts Boneca

► **To cite this version:**

Richard Wheeler, Frédéric Veyrier, Catherine Werts, Ivo Gomperts Boneca. Peptidoglycan and Nod Receptor. Taniguchi N., Endo T., Hart G., Seeberger P., Wong CH. (eds). Glycoscience: Biology and Medicine, Springer Japan, pp.737-747, 2015, 978-4-431-54841-6. 10.1007/978-4-431-54841-6_147 . pasteur-02337884

HAL Id: pasteur-02337884

<https://pasteur.hal.science/pasteur-02337884>

Submitted on 29 Oct 2019

HAL is a multi-disciplinary open access archive for the deposit and dissemination of scientific research documents, whether they are published or not. The documents may come from teaching and research institutions in France or abroad, or from public or private research centers.

L'archive ouverte pluridisciplinaire **HAL**, est destinée au dépôt et à la diffusion de documents scientifiques de niveau recherche, publiés ou non, émanant des établissements d'enseignement et de recherche français ou étrangers, des laboratoires publics ou privés.



Distributed under a Creative Commons Attribution - NonCommercial - ShareAlike 4.0 International License

Peptidoglycan and Nod Receptor

Richard Wheeler, Frédéric Veyrier, Catherine Werts, and Ivo Gomperts Boneca

R. Wheeler • C. Werts • I.G. Boneca (*)

Biology and Genetics of the Bacterial Cell Wall Unit, Institut Pasteur, Paris cedex 75, France

Inserm, Group Avenir, Paris, France

e-mail: rwheeler@pasteur.fr; cwerts@pasteur.fr; bonecai@pasteur.fr

F. Veyrier

Biology and Genetics of the Bacterial Cell Wall Unit, Institut Pasteur, Paris cedex 75, France

Inserm, Group Avenir, Paris, France

Invasive Bacterial Infections Unit, Institut Pasteur, Paris cedex 75, France

Microbiology, Molecular Biology and Evolutionary Biology, Institut Pasteur in Paris, Paris, France

e-mail: frederic.veyrier@iaf.inrs.ca

Abstract

Bacterial cells are encompassed by a macromolecular network of peptidoglycan, the major component of bacterial cell walls that provides the cell wall strength and determines bacterial morphology. Eukaryotic organisms sense the presence of bacteria by detecting peptidoglycan fragments shed by the bacterium or released through hydrolytic attack by host enzymes. As such, peptidoglycan plays a major role in regulation of host inflammatory homeostasis and has a remarkable variety of influences on the physiological development of the host.

This chapter describes the tools necessary to characterize both the biochemistry and biological activity of peptidoglycans purified from a broad range of bacteria. These protocols detail the procedures for purification of peptidoglycan and analysis of its composition by reversed-phase high-performance liquid chromatography (HPLC), taking into account the specific requirements for different types of bacteria, and describe a NF- κ B-luciferase reporter assay performed using the HEK293T human epithelial cell line, to assess the biological activity of purified peptidoglycans through recognition by mammalian Nod-like receptors Nod1 and Nod2.

Keywords

Peptidoglycan, Gram-negative, Gram-positive, *Mycobacterium*, Nod1, Nod2, NF- κ B, Cell wall

Introduction

Peptidoglycan is a unique heteropolymer composed of glycans cross-linked by short stem peptides and is the major component of the bacterial cell wall. The glycans are built from repeating units of the disaccharide *N*-acetylglucosamine- β (1,4)-*N*-acetylmuramic acid. The stem peptides are attached to the lactyl moiety of the *N*-acetylmuramic acids and are composed of alternating l- and d-amino acids with the following general sequence: l-Ala, d-Glx, diamino acid (most frequently *meso*-diaminopimelic acid or l-lysine), d-Ala, d-Ala. The unique nature of the peptidoglycan has been co-opted during evolution by eukaryotes as a signal for the presence of bacteria in their environment. For example, invertebrates use a variety of peptidoglycan recognition proteins (PGRPs; Gottar et al. 2002; Michel et al. 2001) to sense peptidoglycan, while mammals use the Nod-like receptors (NLRs) Nod1 and Nod2 (Girardin et al. 2003a, b). The last decade has generated much work on the structure, recognition, and specificity of these receptors (Girardin et al. 2003c). However, despite a common building block, the mature peptidoglycan is highly heterogeneous and species specific. Thus, to ascertain the biological activity of the peptidoglycan of a given species, the preparation of a highly purified peptidoglycan is required, free of other cell wall components such as lipoproteins, secondary polysaccharides, lipopolysaccharides, lipoteichoic acids, and many other components that are often species or genus specific (Travassos et al. 2004). Once purified, the peptidoglycan biological activity towards the peptidoglycan receptors

Nod1 and Nod2 can be tested in cellular assays using luciferase reporter systems (Travassos et al. 2004) (Figs. 1 and 2).

Protocol I: Peptidoglycan Purification

Peptidoglycan purification methods vary for different types of bacteria. As far as possible, the following is a single protocol that can be applied to all bacteria. Please read through the protocol carefully, noting additional steps that may be required for your specific application. Additionally, toxic substances are used throughout these protocols. Read MSDS and use appropriate safety precautions (e.g., hydrofluoric acid (HF) is extremely hazardous and has a high reactivity towards glass and many metals; it is stored in compatible plastic containers).

Stock buffers solutions and enzymes:

1.
8 % SDS; SDS is purchased typically as a 20 % solution. Dilute 200 ml of 20 % SDS in milli-Q (MQ) water to a final volume of 500 ml.
2.
0.5 % KOH in methanol-diethyl ether (1:1). Combine 100 ml methanol with 100 ml diethyl ether to produce a 1:1 methanol-diethyl ether solution. Dissolve 1 g of KOH in methanol-diethyl ether solution to a final volume of 200 ml.
3.
8 M LiCl; dissolve LiCl (169.56 g) in MQ water to a final volume of 500 ml.
4.
100 mM EDTA pH 8; dissolve EDTA (14.61 g) in 400 ml MQ water. EDTA dissolves at basic pH. With continual mixing, gradually add NaOH pellets until the EDTA fully dissolves. Adjust the pH to 8.0, and then add MQ water to a final volume of 500 ml.
5.
1 M MgSO₄; dissolve MgSO₄ (60.16 g) in MQ water to a final volume of 500 ml.
6.
1 M CaCl₂; dissolve CaCl₂ (55.49 g) in MQ water to a final volume of 500 ml.
7.
 α -amylase (Sigma; 10 mg/ml); add 50 mg α -amylase to 5 ml MQ water. Mix thoroughly, aliquot, and store at -20 °C.
8.
DNase (Sigma; 2 mg/ml); add 10 mg DNase to 5 ml MQ water. Mix thoroughly, aliquot, and store at -20 °C.
9.
RNase (Sigma; 10 mg/ml); add 50 mg RNase to 5 ml MQ water. Mix thoroughly, aliquot, and store at -20 °C.
10.
Trypsin (3X crystallized from Worthington; 10 mg/ml); add 50 mg trypsin to 5 ml MQ water. Mix thoroughly, aliquot, and store at -20 °C.

Protocol:

Steps 1–9 for All Bacteria

- 1.
Grow 500 ml liquid culture until required growth phase. Alternatively collect cells from agar plates if unable to grow in liquid media.

- 2.
Chill cells rapidly in an ice-ethanol bath for 10 min.
- 3.
Centrifuge cells at an appropriate speed for 30 min at 4 °C.
- 4.
Resuspend the pellet in 10 ml of ice-cold MQ water. It is recommended to use ultrapure endotoxin-free water when PG is intended for immunomodulatory assays (see protocol V).
- 5.
Add the suspension dropwise to 10 ml of 8 % SDS preheated to 95 °C (final SDS concentration is 4 %) in a 50 ml Erlenmeyer flask.
- 6.
Incubate at 95 °C (to avoid bubbling) with constant agitation, for 4 h.
- 7.
Ultracentrifuge for 30 min and discard supernatant. All ultracentrifugations are performed at 150,000×g at room temperature (RT), unless otherwise specified, as SDS precipitates at low temperature.
- 8.
Wash by resuspension in MQ water at RT and ultracentrifugation as in step 7 or in 1.5 ml microfuge tubes in a micro-ultracentrifuge.
- 9.
Repeat step 8 until the supernatant is free of SDS (at least seven washes). Check for the presence of SDS as described in Protocol IV.

Protocol complete for Gram-negative bacteria with PG lacking covalently attached lipoproteins, for applications that do not require ultrapure PG. Lyophilize and weigh the pellet. Store at –20 °C.

Steps 10–12 for *Mycobacteria* and Other Actinobacteria Only. Otherwise Go to Step 13

- 10
To hydrolyze mycolic acids by saponification, resuspend the pellet in 1 ml 0.5 % KOH in methanol-diethyl ether (1:1).
- 11.
Incubate at RT for 96 h with agitation.
- 12.
Wash twice by resuspension with 1 ml 100 % methanol and ultracentrifugation.

Steps 13–16 for Gram-Positive Bacteria Only. Otherwise Go to Step 17

- 13.
Resuspend the pellet in 0.5 ml MQ water and transfer to 2 ml screw cap tubes with an equal volume of ≤106 µm acid-washed glass beads. For large pellets, aliquot into several tubes.

- 14.

Break the cells using a cell homogenizer (e.g., FastPrep-24, MP Biomedicals) according to manufacturer protocols. Confirm cell breakage by microscopy.

- 15.

Separate the broken cells from glass beads by vacuum filtration through sintered glass (ASTM 40–60 C). Apply 15 ml of MQ water to the glass beads and filter again. Transfer cell suspension to ultracentrifuge tubes.

- 16.

Ultracentrifuge for 30 min at RT and discard the supernatant.

Steps 17–22 for All Bacteria

- 17.

Resuspend the pellet in 50 mM Tris pH 7.0 pre-warmed to 37 °C.

- 18.

Add α -amylase (100 μ g/ml final) and incubate overnight at 37 °C.

- 19.

Add $MgSO_4$ (20 mM final), DNase (10 μ g/ml) and RNase (50 μ g/ml) and incubate at 37 °C for 2 h.

- 20.

Add $CaCl_2$ (10 mM final) with trypsin (100 μ g/ml final) and incubate overnight at 37 °C.

- 21.

Add SDS to a final concentration of 1 %. Incubate the suspension at 95 °C for 15 min with constant agitation.

- 22.

Ultracentrifuge for 30 min at RT and discard the supernatant.

Steps 23–24 for Gram-Negative Bacteria Only. Otherwise Go to Step 25

- 23.

Wash by resuspension in MQ water and ultracentrifugation.

- 24.

Repeat step 23 until the supernatant is free of SDS (at least seven washes). Check for the presence of SDS as described in Protocol IV.

Protocol complete for Gram-negative bacteria. Lyophilize and weigh the pellet. Store at -20 °C.

Steps 25–41 for All Bacteria Excluding Gram-Negative Bacteria

- 25.

Wash once by resuspension in MQ water and ultracentrifugation. Discard the supernatant.

- 26.

Resuspend the pellet in 10 ml of LiCl (8 M), pre-warmed to 37 °C. Incubate for 15 min at 37 °C with constant agitation.

- 27.

Ultracentrifuge the suspension for 30 min. Discard the supernatant.

- 28.

Resuspend the pellet in 10 ml of EDTA pH 8 (100 mM), pre-warmed to 37 °C. Incubate for 15 min at 37 °C with constant agitation.

- 29.

Ultracentrifuge the suspension for 30 min. Discard the supernatant.

- 30.

Wash twice by resuspension in MQ water and ultracentrifugation. Discard the supernatant.

- 31.

In an acetone-resistant tube (e.g., polyallomer), add 10 ml of acetone to the pellet and sonicate for 15 min in an ultrasonic bath. The pellet should resuspend during sonication.

- 32.

Ultracentrifuge the suspension for 30 min. Discard the supernatant.

- 33.

Wash twice by resuspension in MQ water and ultracentrifugation. Discard the supernatant.

- 34.

Lyophilize and weigh the pellet.

NB: At this stage of the purification, the PG retains labile covalent modifications such as *O*-acetylated groups which may be desired for analysis.

- 35.

Add 1 ml of HF per 2.5 mg of pellet in polypropylene/polyallomer tubes.

NB: HF is extremely hazardous. Do not attempt to use without receiving specific training on handling, disposal, and decontamination. All solutions should be maintained at 4 °C to reduce vapor.

- 36.

Incubate at 4 °C for 96 h with constant stirring.

- 37.

Ultracentrifuge for 30 min in a micro-ultracentrifuge at 4 °C. Discard supernatant.

- 38.

Wash twice by resuspension in MQ water and ultracentrifugation. Discard the supernatant.

- 39.

Wash twice by resuspension in 50 mM Tris pH 7.0 and ultracentrifugation. Discard the supernatant.

- 40.

Wash once by resuspension in MQ water and ultracentrifugation. Discard the supernatant.

- 41.

Lyophilize and weigh the pellet.

Protocol Complete for Gram-Positive Bacteria, *Mycobacteria* and Other Actinobacteria.
Store at $-20\text{ }^{\circ}\text{C}$

Protocol II: Peptidoglycan Digestion by Mutanolysin

Stock buffers, solutions, and enzymes:

- 1.
Mutanolysin from *Streptomyces globisporus* ATCC 21553 (Sigma; 10 mg/ml); the precise quantity of mutanolysin purchased varies between batches and is indicated on the vial. Resuspend to a final concentration of 10 mg/ml in MQ water. Mix thoroughly, then aliquot into 50 μl volumes, and store at $-20\text{ }^{\circ}\text{C}$.

- 2.
100 mM sodium phosphate buffer pH 5.6 stock; combine 7.9 ml 1 M Na_2HPO_4 with 92.1 ml 1 M NaH_2PO_4 and add MQ water to a total volume of 950 ml. Adjust the pH to 5.6 with orthophosphoric acid and bring the final volume to 1 L. Autoclave or filter sterilize.

- 3.
0.5 M sodium borate buffer pH 9; dissolve boric acid powder (15.46 g) in 400 ml MQ water. Adjust the pH to 9 with NaOH. Adjust the final volume to 500 ml with MQ water. In the case of PGs with *O*-acetyl groups, adjust it to pH 8.

Protocol:

- 1.
Resuspend PG to the desired concentration in MQ water.

- 2.
Resuspend 200–750 μg of PG in 190 μl 12.5 mM sodium phosphate buffer (pH 5.6) and 100 μg of mutanolysin.

- 3.
Incubate at $37\text{ }^{\circ}\text{C}$ for 16 h with agitation.

- 4.
Boil the samples for 10 min to stop the reaction.

- 5.
Centrifuge in a microfuge for 5 min at maximum speed and transfer the supernatant to a 2 ml tube.

- 6.
To reduce sugar moieties, add an equal volume of 0.5 M sodium borate buffer (pH 9.0; in the case of PGs with *O*-acetyl groups, use a pH 8 instead). Add sodium borohydride (10 mg/ml final) and mix thoroughly. Be careful as the reaction is effervescent.

- 7.
Incubate for 15 min at RT.

- 8.
Stop the reaction by slowly adding orthophosphoric acid until the solution reaches pH 2 (check by spotting 0.5 μl of the reaction onto pH paper). Be careful as the reaction is effervescent.

- 9.
Centrifuge with a microfuge for 5 min at maximum speed. Supernatants may be filtered using 4 mm Acrodisc syringe filters.

- 10.

Transfer the supernatant to a conical bottom glass vial suitable for HPLC.

Protocol III: Muropeptide Analysis by Reversed-Phase HPLC

Stock Buffers, Solutions, and Enzymes

All buffers for HPLC must be degassed before use. Modern HPLC systems typically include an online degassing module. Check before use.

- 1.

Buffer A(G-) 50 mM NaH_2PO_4 pH 4.3; dissolve NaH_2PO_4 monohydrate (13.8 g) in 1.8 L of HPLC super gradient grade water. Adjust pH to 4.3, and then add water to a final volume of 2 L. Filter using mixed cellulose ester filters and autoclave the solution.

- 2.

Buffer B(G-) 75 mM NaH_2PO_4 pH 4.9 with 15 % methanol; dissolve NaH_2PO_4 monohydrate (20.7 g) in 1.5 L of HPLC super gradient grade water. Adjust pH to 4.9, and then add water to a final volume of 1.7 L. Add 300 ml of HPLC grade methanol and mix thoroughly. Filter using 0.2 μm PVDF filters.

- 3.

Buffer A(G+) 10 mM $\text{NH}_4\text{H}_2\text{PO}_4$ pH 5.6; dissolve $\text{NH}_4\text{H}_2\text{PO}_4$ (2.3 g) in 1.8 L of HPLC super gradient grade water. Adjust pH to 5.6, and then add water to a final volume of 2 L. Filter and autoclave the solution.

- 4.

Buffer B(G+) 10 mM $\text{NH}_4\text{H}_2\text{PO}_4$ pH 5.6 with 30 % methanol; dissolve $\text{NH}_4\text{H}_2\text{PO}_4$ (2.3 g) in 1.2 L of HPLC super gradient grade water. Adjust pH to 5.6, and then add water to a final volume of 1.4 L. Add 600 ml of HPLC grade methanol and mix thoroughly. Filter using 0.2 μm PVDF filters.

- 5.

Buffer A(Ds) 0.05 % Trifluoroacetic acid (TFA); add 1 ml of TFA to 2 L of HPLC super gradient grade water.

- 6.

Buffer B(Ds) 0.05 % TFA with 50 % acetonitrile; add 1 ml of TFA to 1 l of HPLC super gradient grade water, and then mix with 1 L of HPLC grade acetonitrile.

Protocol:

- 1.

Set up an HPLC system such as the LC20 Shimadzu system, equipped with a Hypersil octyldecyl silane (C18) column (4.6 \times 250 mm) at 52 $^\circ\text{C}$, with a flow rate of 0.5 ml/min. Muropeptides are detected at a 206 nm wavelength using, for example, a Shimadzu SPD-20A-UV-Vis detector.

- 2.

Wash the storage solution (typically 80 % methanol) from the column, and then equilibrate with at least five column volumes of the appropriate buffer B then buffer A.

- 3.

The gradient conditions are as follows depending on the analysis:

(a) Gram-negative-type PG and Gram-positive meso-DAPNH₂-type PG:

Use a 0–100 % buffer B linear gradient over 160 min.

Buffer A(G-): 50 mM NaH₂PO₄ pH 4.3.

Buffer B(G-): 75 mM NaH₂PO₄ pH 4.9 with 15 % methanol.

(b) Other Gram-positive-type PG:

Use a 0–100 % buffer B linear gradient over 280 min.

Buffer A(G+): 10 mM NH₄PO₄ pH 5.6.

Buffer B(G+): 10 mM NH₄PO₄ pH 5.6 with 30 % methanol

(c) For desalting muopeptides (prior to mass spectrometry analysis):

Use a 0–50 % buffer B linear gradient over 30 min.

Buffer A(Ds): 0.05 % TFA.

Buffer B(Ds): 0.05 % TFA with 50 % acetonitrile.

Protocol IV: Verification of the Absence of SDS in PG Sample

According to Hayashi et al. (1975)

Stock buffers, solutions, and enzymes:

- 1.
0.7 mM phosphate buffer pH 7.2; combine 19.6 ml of 10 mM NaH₂PO₄ with 50.4 ml 10 mM Na₂HPO₄. Adjust to 1 L with MQ water and autoclave.
- 2.
100× Methylene blue stock; dissolve methylene blue in MQ water to 0.5 % (w/v). Combine 1 volume of chloroform with 20 volumes of 0.5 % methylene blue. Store in the dark.

Protocol:

- 1.
Dilute 100× methylene blue stock 1:100 (v/v) in 0.7 mM phosphate buffer pH 7.2.

- 2.

Take 500 µl of supernatant from PG washes and mix with 250 µl of the dilute methylene blue solution. Use MQ water instead of supernatant as a negative control.

- 3.

Add 1.5 ml chloroform.

- 4.

Vortex for 1 min and then allow to settle for 1 min.

- 5.

The unwanted presence of SDS will be indicated by a blue lower phase. SDS-free supernatant should be pink/clear.

Protocol V: NF- κ B Luciferase Assay of Muropeptide Recognition by Nod Proteins

In this assay, the human epithelial cell line HEK293T, which does not express Nod2 and only minimal amounts of human Nod1, is transfected with a NF- κ B-luciferase reporter construct together with Nod1 or Nod2 and β -galactosidase-expressing vectors. Muropeptides that cannot enter the cells must be co-transfected in order to stimulate the cytosolic Nod proteins, which will activate the NF- κ B promotor, resulting in luciferase expression. The activities of luciferase and β -galactosidase are measured from cellular lysates in the presence of their substrates, using a luminometer and ELISA reader, respectively. Results are expressed as relative light units, normalized to the β -galactosidase activity. Control muropeptides (MurTriDap as Nod1 agonist or MDP as Nod2 agonist) and digestion buffer should be added as positive and negative controls in each assay. Each sample should be tested in triplicate, and several concentrations should be tested. In each assay, a NF- κ B-luciferase control should be conducted without co-transfection of a Nod vector. As a first control of proper purification, non-digested PG should be tested for lack of TLR2 recognition (Travassos et al. 2004).

Stock buffers, solutions, and enzymes:

- 1.

Complete DMEM medium low glucose with 5 % fetal bovine serum.

- 2.

Lysis buffer; 25 mM Tris-HCl pH 8, 8 mM MgCl₂, 1 % Triton X-100, 15 % glycerol, and 1 mM DTT added extemporaneously. Keep at 4 °C.

- 3.

Luciferin stock 1 mM; dissolve 10 mg of Luciferin potassium salt in 36 ml of potassium phosphate buffer (85 ml KH₂PO₄ 1M + 95 ml K₂HPO₄ 1M) pH 7.8 (keep frozen aliquots).

- 4.

Luciferin buffer; lysis buffer with 1 mM DTT, 1 mM ATP, 2 µM Luciferin.

- 5.

Z buffer; 0,06 M Na₂HPO₄, 0,04 M NaH₂PO₄, 10 mM KCL, 1 mM MgSO₄, adjusted to pH 7.

- 6.

ONPG buffer; ONPG 4 mg/ml in Z buffer (keep in the dark at 4 °C).

Protocol:

- 1.

HEK293T cells are seeded the day before the transfection in 24-well plates at a density of around 10^5 cells in 1 ml of complete DMEM medium.

- 2.

Thirty minutes before transfection, add per well the equivalent of 0.1–10 μ l of the non-digested or digested PG of interest at 5 mg/ml (nonreduced and reduced as a control since the activity towards Nod2 will be lost upon reduction) as well as control muropeptides at 100 nM.

- 3.

Transfect cells when they are 30–50 % confluent. Fugene or Jet PEI transfecting reagents are commonly used. All media should be warmed to RT before use. Allow DNA/transfecting reagent complexes to form at RT for 30 min. Add carefully to the cells, since the HEK293T cells are loosely adherent.

DNA mix: Prepare a mixture of DNA corresponding, per well, to 50 ng of 5X NF- κ B luciferase reporter vector (Stratagene), 25 ng of pCMV- β Gal plasmid (Invitrogen), 1 ng of pcDNA3-Nod1 or pcDNA3-Nod2 expression vectors, and 225 ng of pCDNA3 plasmid in 20 μ l of endotoxin-free water.

For TLR2 test, instead of Nod1 or Nod2 expressing vector, add in the DNA mixture, a TLR2 expressing vector, and complete up to 300 ng of total DNA with pCDNA3. Use Pam3cysSK4 as a positive control of TLR2 activation. TLR and Nod vectors and ligands can be purchased from InvivoGen. Several trials may be required to adjust the quantities of TLR2 or NOD expressing vectors to get proper activation upon positive control stimulation.

- 4.

Transfecting solution: Prepare a mixture of 1:100 (*v/v*) transfection reagent in DMEM without serum, corresponding to 100 μ l per well.

- 5.

Formation of DNA complexes with transfecting reagent: Add the transfecting solution to the DNA mix. Do not vortex. Mix by inverting the tubes. Incubate at RT for 30 min.

- 6.

Carefully add 120 μ l of DNA complexes onto the cells. Incubate 24 h.

- 7.

Lyse the cells by adding 100 μ l of lysis buffer in each well. Incubate 5 min at RT.

- 8.

Prepare two 96-well plates, one for the measure of luciferase activity with a luminometer and a second for ELISA plate reader. For each well, transfer 10 μ l of the cell lysate to both plates.

- 9.

For luminometer measurements: Inject 50 μ l of luciferase buffer 2 s before reading.

- 10.

For β -galactosidase assay: Add one volume of ONPG buffer to four volume of Z buffer. Add 100 μ l to each well. Use 10 μ l of lysis buffer as a negative control. Incubate at 37 °C for 30 min. Measure at a wavelength of 420 or 450 nM.

References

1. Girardin SE, Boneca IG, Carneiro LA et al (2003a) Nod1 detects a unique muropeptide from Gram-negative bacterial peptidoglycan. *Science* 300:1584–1587
2. Girardin SE, Boneca IG, Viala J et al (2003b) Nod2 is a general sensor of peptidoglycan through muramyl dipeptide (MDP) detection. *J Biol Chem* 278:8869–8872
3. · Girardin SE, Travassos LH, Herve M et al (2003c) Peptidoglycan molecular requirements allowing detection by Nod1 and Nod2. *J Biol Chem* 278:41702–41708
4. · Gottar M, Gobert V, Michel T et al (2002) The *Drosophila* immune response against Gram-negative bacteria is mediated by a peptidoglycan recognition protein. *Nature* 416:640–644
5. · Hayashi K (1975) A rapid determination of sodium dodecyl sulfate with methylene blue. *Anal Biochem* 67:503–506
6. · Michel T, Reichhart JM, Hoffmann JA, Royet J (2001) *Drosophila* Toll is activated by Gram-positive bacteria through a circulating peptidoglycan recognition protein. *Nature* 414:756–759
7. · Travassos LH, Girardin SE, Philpott DJ et al (2004) Toll-like receptor 2-dependent bacterial sensing does not occur via peptidoglycan recognition. *EMBO Rep* 5:1000–1006
8. · Viala J, Chaput C, Boneca IG et al (2004) Nod1 responds to peptidoglycan delivered by the *Helicobacter pylori* *cag* pathogenicity island. *Nat Immunol* 5:1166–1174

Figures

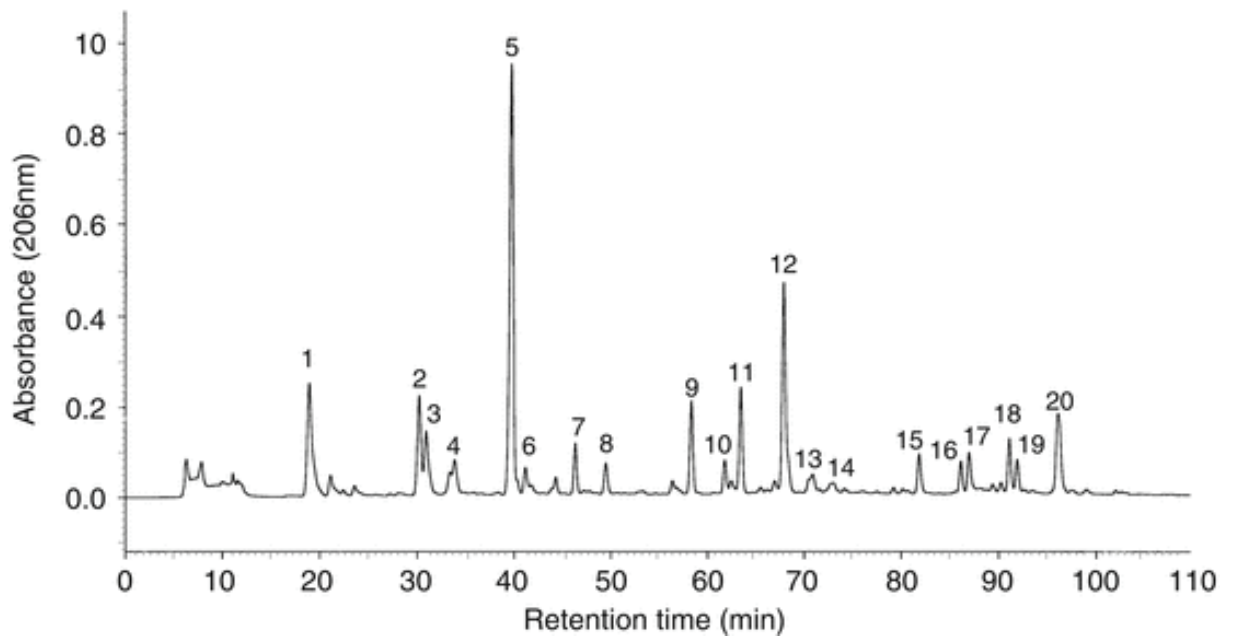


Fig. 1 Example of a muropeptide profile of PG from the Gram-negative bacterium *Helicobacter pylori* (Adapted from Viala et al. 2004)

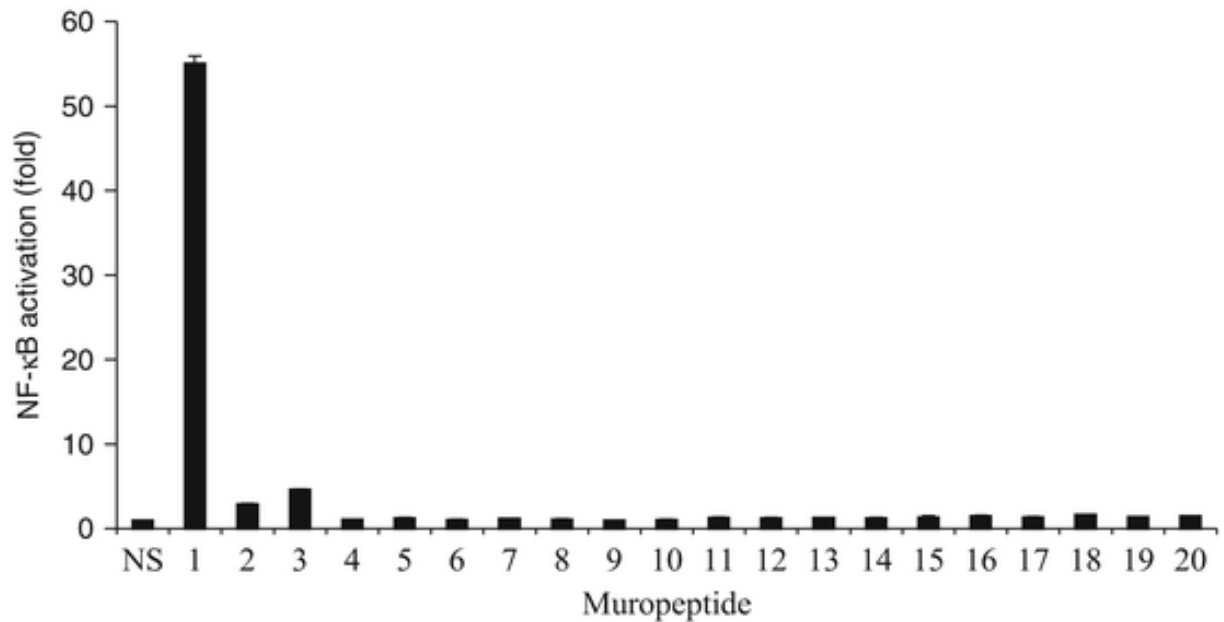


Fig. 2 Example of biological activity towards Nod1 of HPLC purified muropeptides from *Helicobacter pylori* (Adapted from Viala et al. 2004). Muropeptide numbers correspond to indicated peaks in Fig. 1