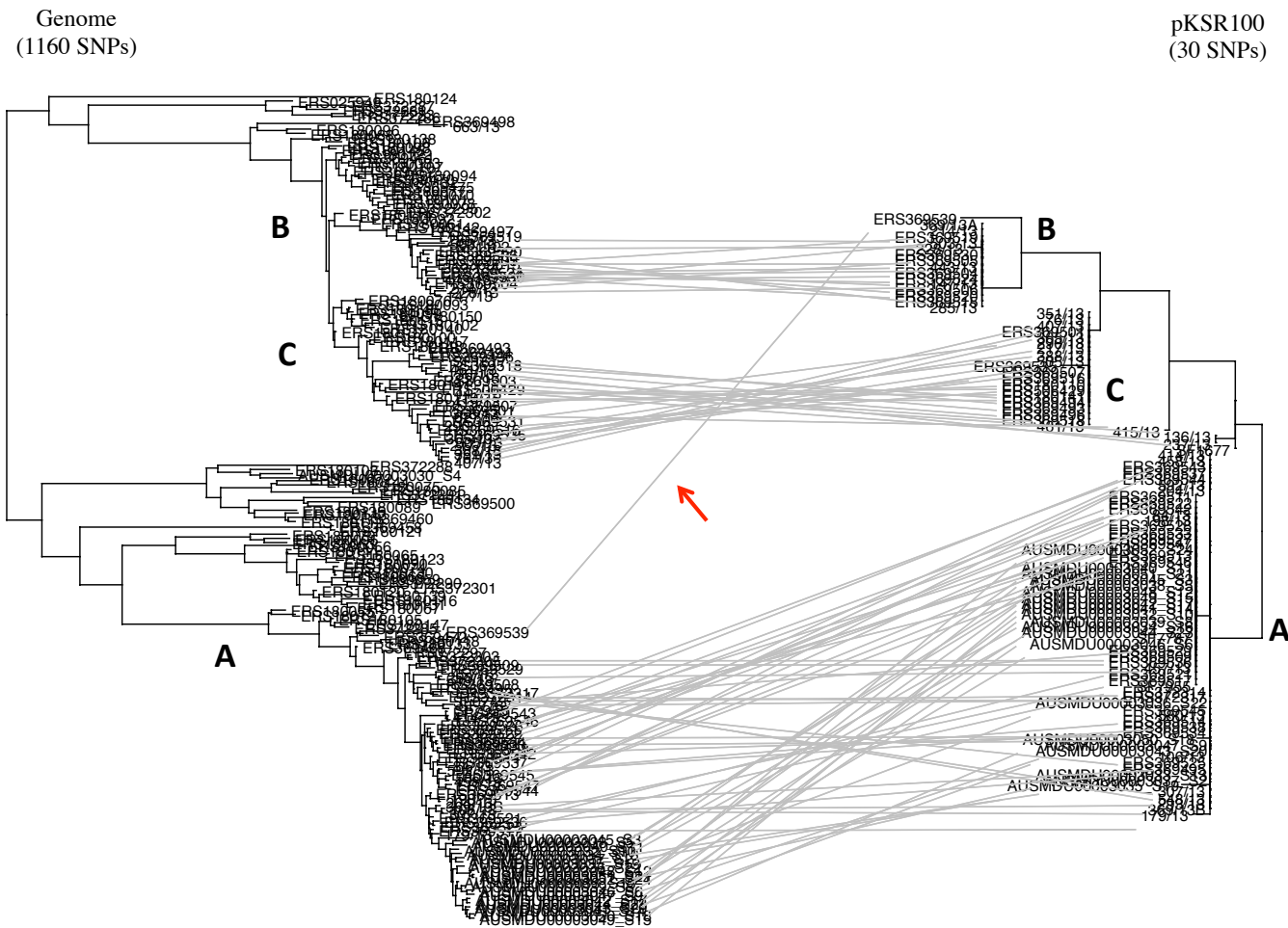
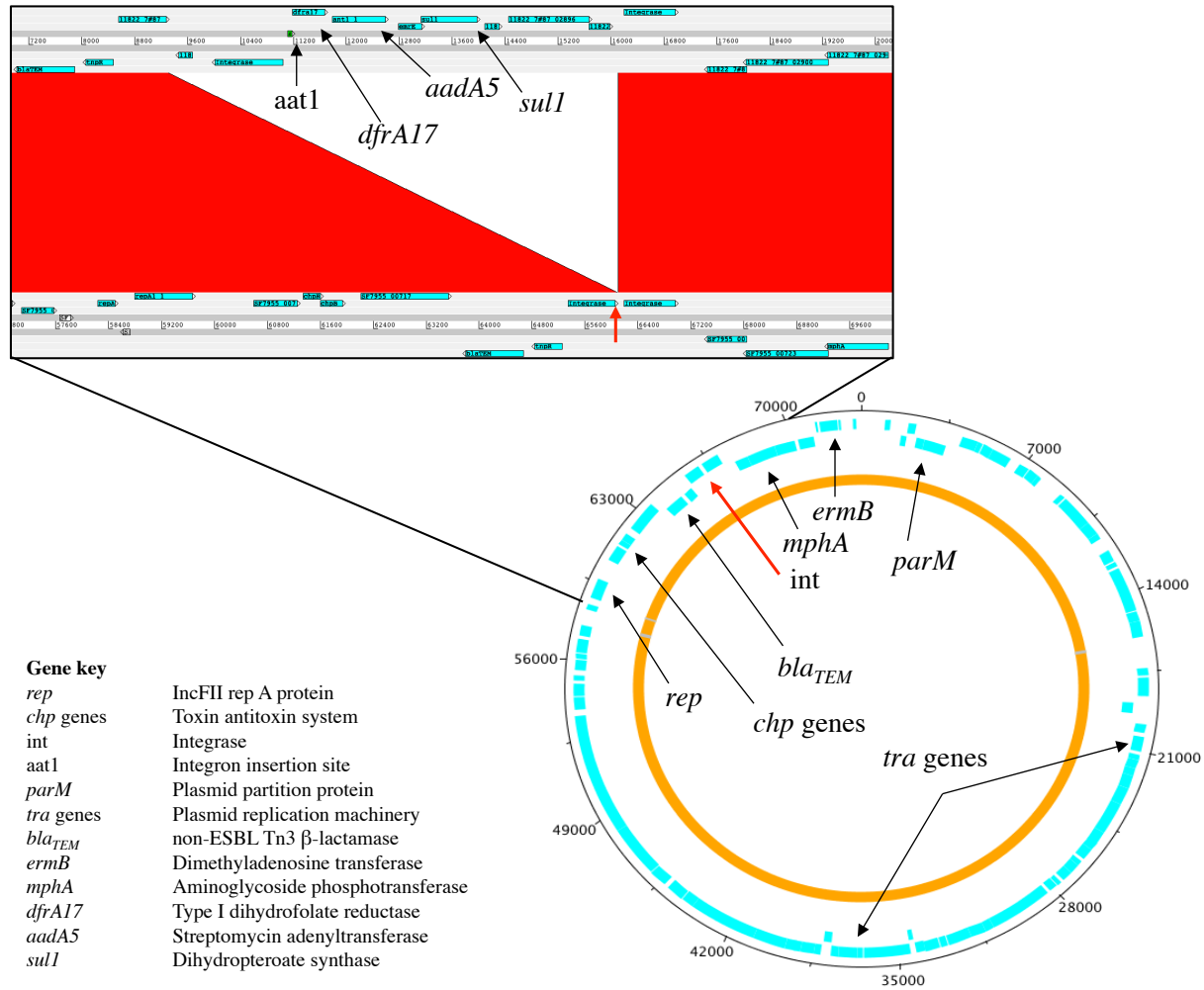


B. Relationships of MSM-outbreak associated lineage phylogeny with carriage of variably present ARGs and interviewee data. The phylogenetic tree (from Figure 2 including left-most track) is shown adjacent to further tracks showing those isolates linked with interviewee data (blue), as well as the presence (red) and absence (blue) of ARGs, grouped by the genetic carriage element (labeled above).



C. Co-evolutionary relationships of pKSR100 (right) with the genome of the MSM-outbreak associated lineage isolates (left). Sequences from individual isolates are linked by grey lines and an example of horizontal transmission of the plasmid is indicated (red arrow).

Horizontal transmission of pKSR100 from sub-lineage A supported by this isolate (ERS369539) containing the *dfrA17/aadA5* class I integron found on pKSR100 in sub-lineage B isolates



D. Genome schematic of plasmid pKSR100 from isolate SF7955. The insertion of a Class 1 Integron (shown here from isolate ERS369539) is shown inset, where blocks of collinear synteny are shown in red between the sequences.

ARG	Phylogenetic lineage		
	Africa-associated lineage	Asia-associated lineage	MSM-outbreak associated lineage
<i>mph(A)</i>	2	3	51
<i>erm(B)</i>	0	1	48
<i>blaTEM</i>	4	16	53
<i>mdtE</i>	65	45	67
<i>aph6id (strB)</i>	58	23	23
<i>aph33ib (strA)</i>	60	23	23
<i>sul2</i>	58	64	23
<i>dfra14</i>	54	3	21
<i>sul1</i>	0	6	9
<i>bl2d_oxa1</i>	58	12	90
<i>catA1</i>	60	75	92
<i>dfra17</i>	0	1	8
<i>emrD</i>	0	0	0
<i>dfra12</i>	0	0	1
<i>dfra1</i>	2	65	1
<i>ant2ia</i>	0	0	1
<i>catA2</i>	0	0	0
<i>aac6ib</i>	0	1	0
<i>acrB</i>	98	100	100
<i>ant3ia (aadA1)</i>	58	75	99
<i>arnA</i>	98	100	100
<i>bacA</i>	98	100	100
<i>bcr</i>	96	97	98
<i>bl1_ec</i>	100	100	100
<i>dfra5</i>	0	3	0
<i>macB</i>	98	100	100
<i>mdtG</i>	98	99	100
<i>mdtH</i>	98	99	99
<i>mdtL</i>	100	99	99
<i>mdtM</i>	0	0	0
<i>mdtN</i>	100	1	99
<i>qnrB</i>	0	1	0
<i>qnrS</i>	0	3	0
<i>tetA</i>	2	10	0
<i>tetB</i>	60	77	100
<i>tetC</i>	4	10	0
<i>tolC</i>	100	100	100
<i>mdtK</i>	100	99	100
<i>aada5</i>	0	1	8
<i>gyrA</i> * sites 83, 87, 211	0	76	2
<i>parC</i> * sites 80, 84	0	47	0
Total isolates in clade	52	69	206

* ≥ 80% of isolates examined

E. Percentage of isolates containing antimicrobial resistance genes (ARGs) by lineage. Cells are coloured according to lineage colour in Figure 1 with increasing depth corresponds to increased percentage of isolates carrying the ARG.

Isolate details				
Sample name	Sequencing site	Isolate site	ENA accession number	
ERS180138	WTSI	PHE	ERS180138	
228/13	PHE	PHE	ERS563945	
ERS369546	WTSI	PHE	ERS369546	
ERS369533	WTSI	PHE	ERS369533	
ERS369501	WTSI	PHE	ERS369501	
ERS369492	WTSI	PHE	ERS369492	
ERS180111	WTSI	PHE	ERS180111	
13-6754	WTSI	IP	ERS372317	
ERS369507	WTSI	PHE	ERS369507	
ERS180128	WTSI	PHE	ERS180128	
ERS369522	WTSI	PHE	ERS369522	
AUSMDU00003039_S8	MDU PHL	UoM	ERS526308	
ERS088023	WTSI	NICD	ERS088023	
11-719	WTSI	IP	ERS372292	
sh0368_4464372	WTSI	NICD	ERS088046	
ERS180059	WTSI	PHE	ERS180059	
ERS180086	WTSI	PHE	ERS180086	
ERS180063	WTSI	PHE	ERS180063	
ERS180139	WTSI	PHE	ERS180139	
ERS180058	WTSI	PHE	ERS180058	
ERS369534	WTSI	PHE	ERS369534	
214/13	PHE	PHE	ERS563938	
ERS088048	WTSI	NICD	ERS088048	
80-12-224-2372	WTSI	NSWDOH	ERS506426	
ERS369505	WTSI	PHE	ERS369505	
10-2529	WTSI	IP	ERS372287	
ERS180080	WTSI	PHE	ERS180080	
sh0343_4464347	WTSI	NICD	ERS088021	
11-278	WTSI	IP	ERS372290	
695/13	PHE	PHE	ERS563922	
Sh08-0350	WTSI	IP	ERS025944	
SF1677	DSC	PHOL	ERS526295	
10-1755	WTSI	IP	ERS372285	
ERS180116	WTSI	PHE	ERS180116	
ERS180096	WTSI	PHE	ERS180096	
365/13	PHE	PHE	ERS563924	
ERS180103	WTSI	PHE	ERS180103	
ERS369543	WTSI	PHE	ERS369543	
K-9292	WTSI	ICDDRB	ERS157680	
ERS180148	WTSI	PHE	ERS180148	
80-12-240-4928	WTSI	NSWDOH	ERS506427	
12-1488	WTSI	IP	ERS372300	
ERS180123	WTSI	PHE	ERS180123	
ERS180065	WTSI	PHE	ERS180065	
ERS369524	WTSI	PHE	ERS369524	
AUSMDU00003037_S2	MDU PHL	UoM	ERS526306	
ERS369496	WTSI	PHE	ERS369496	
415/13	PHE	PHE	ERS563950	
461/13	PHE	PHE	ERS563936	
ERS180105	WTSI	PHE	ERS180105	
ERS180136	WTSI	PHE	ERS180136	
ERS180130	WTSI	PHE	ERS180130	
580/13	PHE	PHE	ERS563959	
K-9175	WTSI	ICDDRB	ERS157677	
ERS180093	WTSI	PHE	ERS180093	
ERS087994	WTSI	NICD	ERS087994	
512/13	PHE	PHE	ERS563935	
K-9447	WTSI	ICDDRB	ERS157686	
MS0105_2882369	WTSI	OUCRU	ERS031978	
10-1391	WTSI	IP	ERS372283	
505/13	PHE	PHE	ERS563960	
348/13	PHE	PHE	ERS563947	
115/13	PHE	PHE	ERS563927	
ERS369453	WTSI	PHE	ERS369453	
12-10736	WTSI	IP	ERS372308	
ERS180141	WTSI	PHE	ERS180141	
ERS369476	WTSI	PHE	ERS369476	
ERS369515	WTSI	PHE	ERS369515	
AUSMDU00003038_S5	MDU PHL	UoM	ERS526307	
12-321	WTSI	IP	ERS372302	
ERS369494	WTSI	PHE	ERS369494	
ERS180142	WTSI	PHE	ERS180142	
sh0342_4464346	WTSI	NICD	ERS088020	
MS0078_2882359	WTSI	OUCRU	ERS031968	
K-9444	WTSI	ICDDRB	ERS157685	
11-6611	WTSI	IP	ERS372295	
ERS180115	WTSI	PHE	ERS180115	
ERS369513	WTSI	PHE	ERS369513	
ERS369547	WTSI	PHE	ERS369547	
ERS369527	WTSI	PHE	ERS369527	
EG0006_2874369	WTSI	OUCRU	ERS031799	
ERS180110	WTSI	PHE	ERS180110	
ERS180064	WTSI	PHE	ERS180064	
ERS180109	WTSI	PHE	ERS180109	
ERS369536	WTSI	PHE	ERS369536	
ERS180090	WTSI	PHE	ERS180090	
ERS369458	WTSI	PHE	ERS369458	
K-9413	WTSI	ICDDRB	ERS157684	
ERS369463	WTSI	PHE	ERS369463	
ERS180067	WTSI	PHE	ERS180067	
ERS180081	WTSI	PHE	ERS180081	
ERS369511	WTSI	PHE	ERS369511	
ERS180118	WTSI	PHE	ERS180118	
AUSMDU00003041_S14	MDU PHL	UoM	ERS526310	
ERS180126	WTSI	PHE	ERS180126	
ERS369531	WTSI	PHE	ERS369531	
147/13	PHE	PHE	ERS563923	
ERS180087	WTSI	PHE	ERS180087	
EG0257_2874375	WTSI	OUCRU	ERS031805	
K-62	WTSI	ICDDRB	ERS157758	
ERS180102	WTSI	PHE	ERS180102	
ERS180082	WTSI	PHE	ERS180082	
ERS180060	WTSI	PHE	ERS180060	
ERS180149	WTSI	PHE	ERS180149	
ERS180099	WTSI	PHE	ERS180099	
ERS372313	WTSI	IP	ERS372313	
AUSMDU00003050_S18	MDU PHL	UoM	ERS526319	
ERS369508	WTSI	PHE	ERS369508	
AUSMDU00003042_S17	MDU PHL	UoM	ERS526311	
ERS180089	WTSI	PHE	ERS180089	
457/13	PHE	PHE	ERS563943	
ERS180068	WTSI	PHE	ERS180068	
ERS180129	WTSI	PHE	ERS180129	
307/13	PHE	PHE	ERS563934	
AUSMDU00003040_S11	MDU PHL	UoM	ERS526309	
AUSMDU00003051_S21	MDU PHL	UoM	ERS526320	
ERS180137	WTSI	PHE	ERS180137	
12-2962	WTSI	IP	ERS372305	

AUSMDU00003029_S1	MDU PHL	UoM	ERS526298
ERS180106	WTSI	PHE	ERS180106
sh0341_4464345	WTSI	NICD	ERS088019
503/13	PHE	PHE	ERS563937
ERS369541	WTSI	PHE	ERS369541
AUSMDU00003048_S12	MDU PHL	UoM	ERS26317
ERS369468	WTSI	PHE	ERS369468
12-070	WTSI	IP	ERS372297
ERS369529	WTSI	PHE	ERS369529
AUSMDU00003033_S13	MDU PHL	UoM	ERS26302
ERS180066	WTSI	PHE	ERS180066
ERS180078	WTSI	PHE	ERS180078
EG0198_2874374	WTSI	OUCRU	ERS031804
ERS180083	WTSI	PHE	ERS180083
ERS031795	WTSI	OUCRU	ERS031795
ERS180114	WTSI	PHE	ERS180114
ERS180121	WTSI	PHE	ERS180121
AUSMDU00003045_S3	MDU PHL	UoM	ERS26314
12-2560	WTSI	IP	ERS372303
K-9522	WTSI	ICDDBR	ERS157688
ERS369506	WTSI	PHE	ERS369506
293/13	PHE	PHE	ERS563930
369/13B	PHE	PHE	ERS563925
ERS369518	WTSI	PHE	ERS369518
13-1398	WTSI	IP	ERS372311
ERS369525	WTSI	PHE	ERS369525
369/13A	PHE	PHE	ERS563917
K-734	WTSI	ICDDBR	ERS157674
ERS372298	WTSI	IP	ERS372298
ERS369497	WTSI	PHE	ERS369497
592/13	PHE	PHE	ERS563931
ERS180085	WTSI	PHE	ERS180085
ERS369535	WTSI	PHE	ERS369535
ERS369509	WTSI	PHE	ERS369509
Sh06-3638	WTSI	IP	ERS025930
EG0302_2874376	WTSI	OUCRU	ERS031806
ERS180124	WTSI	PHE	ERS180124
ERS180075	WTSI	PHE	ERS180075
K-9588	WTSI	ICDDBR	ERS157689
AUSMDU00003030_S4	MDU PHL	UoM	ERS526299
AUSMDU00003035_S19	MDU PHL	UoM	ERS26304
351/13	PHE	PHE	ERS563954
13-6290	WTSI	IP	ERS372316
K-9129	WTSI	ICDDBR	ERS157675
AUSMDU00003043_S20	MDU PHL	UoM	ERS26312
663/13	PHE	PHE	ERS563951
ERS369498	WTSI	PHE	ERS369498
ERS031786	WTSI	OUCRU	ERS031786
ERS180071	WTSI	PHE	ERS180071
ERS369472	WTSI	PHE	ERS369472
ERS369542	WTSI	PHE	ERS369542
ERS180147	WTSI	PHE	ERS180147
548/13	PHE	PHE	ERS563921
AUSMDU00003031_S7	MDU PHL	UoM	ERS26300
80-11-164-2370	WTSI	NSWDOH	ERS06421
ERS088022	WTSI	NICD	ERS088022
K-9454	WTSI	ICDDBR	ERS157687
458/13	PHE	PHE	ERS563958
806/13	PHE	PHE	ERS563952
287/13	PHE	PHE	ERS563929
ERS180133	WTSI	PHE	ERS180133
K-276	WTSI	ICDDBR	ERS157673
ERS369526	WTSI	PHE	ERS369526
ERS180092	WTSI	PHE	ERS180092
ERS369479	WTSI	PHE	ERS369479
K-9411	WTSI	ICDDBR	ERS157683
DE0090_2868493	WTSI	OUCRU	ERS031761
AUSMDU00003052_S24	MDU PHL	UoM	ERS26321
ERS369545	WTSI	PHE	ERS369545
10-7674	WTSI	PHE	ERS372289
ERS180100	WTSI	PHE	ERS180100
ERS369517	WTSI	PHE	ERS369517
11-6955	WTSI	IP	ERS372296
76/13	PHE	PHE	ERS563955
ERS088047	WTSI	NICD	ERS088047
AUSMDU00003036_S22	MDU PHL	UoM	ERS26305
K-10248	WTSI	ICDDBR	ERS157670
sh0315_4464319	WTSI	NICD	ERS087993
80-11-358-2172	WTSI	NSWDOH	ERS06423
SF0743	DSC	PHOL	ERS526293
Sh05-8094	WTSI	IP	ERS025923
ERS369514	WTSI	PHE	ERS369514
ERS180135	WTSI	PHE	ERS180135
ERS372309	WTSI	IP	ERS372309
11-2240	WTSI	IP	ERS372294
K-10368	WTSI	ICDDBR	ERS157672
AUSMDU00003044_S23	MDU PHL	UoM	ERS26313
10-1295	WTSI	IP	ERS372282
80-13-058-4645	WTSI	NSWDOH	ERS06429
ERS180117	WTSI	PHE	ERS180117
ERS180127	WTSI	PHE	ERS180127
ERS369503	WTSI	PHE	ERS369503
136/13	PHE	PHE	ERS563933
ERS369495	WTSI	PHE	ERS369495
80-12-110-4516	WTSI	NSWDOH	ERS06425
80-12-011-3999	WTSI	NSWDOH	ERS06424
Sh08-3483	WTSI	IP	ERS025949
ERS180056	WTSI	PHE	ERS180056
ERS369477	WTSI	PHE	ERS369477
ERS369544	WTSI	PHE	ERS369544
443/13	PHE	PHE	ERS563919
12-6716	WTSI	IP	ERS372307
ERS180097	WTSI	PHE	ERS180097
11-820	WTSI	IP	ERS372293
10-7290	WTSI	IP	ERS372288
ERS369504	WTSI	PHE	ERS369504
ERS369538	WTSI	PHE	ERS369538
Sh07-4848	WTSI	IP	ERS025937
ERS369537	WTSI	PHE	ERS369537
K-9339	WTSI	ICDDBR	ERS157681
ERS369510	WTSI	PHE	ERS369510
84/13	PHE	PHE	ERS563948
ERS180120	WTSI	PHE	ERS180120
ERS369530	WTSI	PHE	ERS369530
Sh05-0787	WTSI	IP	ERS025912
AUSMDU00003047_S9	MDU PHL	UoM	ERS26316
ERS180098	WTSI	PHE	ERS180098
SF1102	DSC	PHOL	ERS526294
ERS369528	WTSI	PHE	ERS369528
407/13	PHE	PHE	ERS563952

K-9375	WTSI	ICDDRB	ERS157682
ERS180073	WTSI	PHE	ERS180073
ERS180113	WTSI	PHE	ERS180113
106/13	PHE	PHE	ERS563940
ERS088049	WTSI	NICD	ERS088049
ERS180057	WTSI	PHE	ERS180057
12-1897	WTSI	IP	ERS372301
Sh09-4409	WTSI	IP	ERS025956
K-9278	WTSI	ICDDRB	ERS157679
ERS180104	WTSI	PHE	ERS180104
AUSMDU00003032_S10	MDU PHL	UoM	ERS526301
627/13	PHE	PHE	ERS563956
368/13	PHE	PHE	ERS563944
ERS369460	WTSI	PHE	ERS369460
AUSMDU00003034_S16	MDU PHL	UoM	ERS526303
ERS180061	WTSI	PHE	ERS180061
ERS180077	WTSI	PHE	ERS180077
388/13	PHE	PHE	ERS563953
K-10343	WTSI	ICDDRB	ERS157671
ERS087995	WTSI	NICD	ERS087995
ERS180145	WTSI	PHE	ERS180145
ERS369475	WTSI	PHE	ERS369475
5/63	WTSI	PHE	ERS088065
ERS369493	WTSI	PHE	ERS369493
ERS180112	WTSI	PHE	ERS180112
ERS369521	WTSI	PHE	ERS369521
ERS369462	WTSI	PHE	ERS369462
Sh07-4943	WTSI	IP	ERS025938
ERS180076	WTSI	PHE	ERS180076
179/13	PHE	PHE	ERS563918
217/13	PHE	PHE	ERS563939
ERS180150	WTSI	PHE	ERS180150
ERS031772	WTSI	OUCRU	ERS031772
ERS180131	WTSI	PHE	ERS180131
11-632	WTSI	IP	ERS372291
ERS180107	WTSI	PHE	ERS180107
ERS369470	WTSI	PHE	ERS369470
13-3909	WTSI	IP	ERS372314
ERS369519	WTSI	PHE	ERS369519
ERS369512	WTSI	PHE	ERS369512
10-2493	WTSI	IP	ERS372286
ERS180070	WTSI	PHE	ERS180070
80-12-339-4617	WTSI	NSWDOH	ERS506428
ERS369539	WTSI	PHE	ERS369539
ERS088050	WTSI	NICD	ERS088050
ERS180125	WTSI	PHE	ERS180125
ERS180146	WTSI	PHE	ERS180146
K-9169	WTSI	ICDDRB	ERS157676
ERS180101	WTSI	PHE	ERS180101
ERS180079	WTSI	PHE	ERS180079
AUSMDU00003049_S15	MDU PHL	UoM	ERS526318
AUSMDU00003046_S6	MDU PHL	UoM	ERS526315
ERS369499	WTSI	PHE	ERS369499
285/13	PHE	PHE	ERS563928
sh0313_4464317	WTSI	NICD	ERS087991
ERS180091	WTSI	PHE	ERS180091
ERS369461	WTSI	PHE	ERS369461
ERS369516	WTSI	PHE	ERS369516
198/13	PHE	PHE	ERS563941
ERS369457	WTSI	PHE	ERS369457
ERS180095	WTSI	PHE	ERS180095
ERS180122	WTSI	PHE	ERS180122
414/13	PHE	PHE	ERS563949
ERS180084	WTSI	PHE	ERS180084
ERS180143	WTSI	PHE	ERS180143
ERS369520	WTSI	PHE	ERS369520
ERS180134	WTSI	PHE	ERS180134
ERS180108	WTSI	PHE	ERS180108
K-9256	WTSI	ICDDRB	ERS157678
ERS369500	WTSI	PHE	ERS369500
ERS180132	WTSI	PHE	ERS180132
09-9039	WTSI	IP	ERS372281
ERS180074	WTSI	PHE	ERS180074
ERS369523	WTSI	PHE	ERS369523
ERS180094	WTSI	PHE	ERS180094
201/13	PHE	PHE	ERS563942
ERS180055	WTSI	PHE	ERS180055
ERS180069	WTSI	PHE	ERS180069
ERS180144	WTSI	PHE	ERS180144
ERS180072	WTSI	PHE	ERS180072
10262_2868448	WTSI	OUCRU	ERS031716
ERS180140	WTSI	PHE	ERS180140
ERS031757	WTSI	OUCRU	ERS031757
ERS180088	WTSI	PHE	ERS180088
ERS369502	WTSI	PHE	ERS369502
05-11-032-2299	WTSI	NSWDOH	ERS506420
237/13	PHE	PHE	ERS563946
SF7955	DSC	PHOL	ERS526297
290/13	PHE	PHE	ERS563920
447/13	PHE	PHE	ERS563957
204/13	PHE	PHE	ERS563926
SF7787	DSC	PHOL	ERS526296
ERS180119	WTSI	PHE	ERS180119

Key to abbreviations

WTSI	Wellcome Trust Sanger Institute
IP	Pasteur Institute
PHE	Public Health England
OUCRU	Oxford University Clinical Research Unit
NICD	National Institute for Communicable Disease
PHOL	Public Health Ontario Laboratories
NSWDOH	New South Wales Department of Health
UoM	University of Melbourne
ICDDRB	International Centre for Diarrhoeal Disease Research
DSC	Donnelly Sequencing Center
MDU PHL	Microbiological Diagnostic Unit, Public Health Laboratory, Victoria, Australia
ENA	European Nucleotide Archive
ND	Not Determined

Key to gender

M	Male
F	Female
	Blank Unknown

Sample name	Phylogeny		Isolation details		
	Lineage	Sub-lineage	Continent	Country	Date of isolation
ERS180138	MSM-outbreak associated		Europe	UK	03/03/2010
228/13	MSM-outbreak associated	B	Europe	UK	24/06/2013
ERS369546	MSM-outbreak associated	A	Europe	UK	21/08/2013
ERS369533	MSM-outbreak associated	A	Europe	UK	05/03/2013
ERS369501	MSM-outbreak associated	C	Europe	UK	18/10/2012
ERS369492	Asia-associated		Europe	UK	10/07/2012
ERS180111	MSM-outbreak associated		Europe	UK	15/04/2008
13-6754	MSM-outbreak associated	A	Europe	France	07/08/2013
ERS369507	MSM-outbreak associated	C	Europe	UK	29/11/2012
ERS180128	Africa-associated		Europe	UK	10/03/2009
ERS369522	MSM-outbreak associated	A	Europe	UK	22/01/2013
AUSMDU00003039_S8	MSM-outbreak associated	A	Oceania	Australia	22/02/2014
ERS088023	Africa-associated		Africa	South Africa	14/02/2010
11-719	Asia-associated		Europe	France	03/02/2011
sh0368_4464372	Africa-associated		Africa	South Africa	03/06/2011
ERS180059	MSM-outbreak associated		Europe	UK	21/04/2010
ERS180086	Asia-associated		Europe	UK	28/07/2011
ERS180063	MSM-outbreak associated		Europe	UK	20/02/2008
ERS180139	MSM-outbreak associated		Europe	UK	14/07/2010
ERS180058	Africa-associated		Europe	UK	28/10/2009
ERS369534	MSM-outbreak associated	A	Europe	UK	12/03/2013
214/13	MSM-outbreak associated	B	Europe	UK	07/06/2013
ERS088048	Africa-associated		Africa	South Africa	29/03/2011
80-12-224-2372	Asia-associated		Oceania	Australia	11/08/2012
ERS369505	MSM-outbreak associated	B	Europe	UK	29/11/2012
10-2529	MSM-outbreak associated		Latin America	French Guiana	22/02/2010
ERS180080	Asia-associated		Europe	UK	08/10/2008
sh0343_4464347	Africa-associated		Africa	South Africa	14/02/2010
11-278	MSM-outbreak associated		Europe	France	11/01/2011
695/13	Asia-associated		Europe	UK	16/04/2013
Sh08-0350	Outgroup		Outgroup		
SF1677	MSM-outbreak associated	C	North America	Canada	15/07/2013
10-1755	MSM-outbreak associated		Europe	France	01/04/2010
ERS180116	MSM-outbreak associated		Europe	UK	15/11/2010
ERS180096	MSM-outbreak associated		Europe	UK	19/12/2008
365/13	MSM-outbreak associated	C	Europe	UK	23/04/2013
ERS180103	MSM-outbreak associated		Europe	UK	25/03/2008
ERS369543	MSM-outbreak associated	A	Europe	UK	16/07/2013
K-9292	Asia-associated		Asia	Bangladesh	2009
ERS180148	MSM-outbreak associated	C	Europe	UK	04/02/2011
80-12-240-4928	Asia-associated		Oceania	Australia	27/08/2012
12-1488	Africa-associated		Europe	France	22/02/2012
ERS180123	MSM-outbreak associated		Europe	UK	18/06/2010
ERS180065	MSM-outbreak associated		Europe	UK	28/07/2009
ERS369524	MSM-outbreak associated	B	Europe	UK	04/02/2013
AUSMDU00003037_S2	MSM-outbreak associated	A	Oceania	Australia	05/02/2014
ERS369496	MSM-outbreak associated	C	Europe	UK	01/10/2012
415/13	MSM-outbreak associated	C	Europe	UK	16/07/2013
461/13	MSM-outbreak associated	C	Europe	UK	04/06/2013
ERS180105	MSM-outbreak associated		Europe	UK	23/09/2009
ERS180136	Asia-associated		Europe	UK	20/04/2009
ERS180130	MSM-outbreak associated		Europe	UK	04/02/2010
580/13	MSM-outbreak associated	A	Europe	UK	12/08/2013
K-9175	Asia-associated		Asia	Bangladesh	2009
ERS180093	MSM-outbreak associated		Europe	UK	01/04/2011
ERS087994	Africa-associated		Africa	South Africa	25/05/2009
512/13	Africa-associated		Europe	UK	29/05/2013
K-9447	Asia-associated		Asia	Bangladesh	2009
MS0105_2882369	Asia-associated		Asia	Vietnam	May-96
10-1391	MSM-outbreak associated		Latin America	French Guiana	13/02/2010
505/13	MSM-outbreak associated	C	Europe	UK	15/08/2013
348/13	Africa-associated		Europe	UK	09/07/2013
115/13	Africa-associated		Europe	UK	30/04/2013
ERS369453	Asia-associated		Europe	UK	09/02/2004
12-10736	Asia-associated		Europe	France	23/11/2012
ERS180141	MSM-outbreak associated	C	Europe	UK	12/05/2011
ERS369476	Africa-associated		Europe	UK	11/07/2011
ERS369515	MSM-outbreak associated	B	Europe	UK	04/01/2013
AUSMDU00003038_S5	MSM-outbreak associated	A	Oceania	Australia	13/02/2014
12-321	MSM-outbreak associated		Europe	France	07/01/2012
ERS369494	MSM-outbreak associated	C	Europe	UK	25/09/2012
ERS180142	MSM-outbreak associated	B	Europe	UK	26/08/2011
sh0342_4464346	Africa-associated		Africa	South Africa	14/02/2010
MS0078_2882359	Asia-associated		Asia	Vietnam	Dec-95
K-9444	Asia-associated		Asia	Bangladesh	2009
11-6611	MSM-outbreak associated		Europe	France	08/08/2011
ERS180115	MSM-outbreak associated		Europe	UK	09/06/2010
ERS369513	MSM-outbreak associated	A	Europe	UK	24/12/2012
ERS369547	MSM-outbreak associated	A	Europe	UK	04/09/2013
ERS369527	MSM-outbreak associated	A	Europe	UK	11/02/2013
EG0006_2874369	Asia-associated		Asia	Vietnam	Jun-96
ERS180110	MSM-outbreak associated	C	Europe	UK	11/08/2011
ERS180064	Africa-associated		Europe	UK	22/09/2008
ERS180109	Asia-associated		Europe	UK	11/04/2011
ERS369536	MSM-outbreak associated	A	Europe	UK	26/03/2013
ERS180090	MSM-outbreak associated		Europe	UK	27/11/2009
ERS369458	MSM-outbreak associated		Europe	UK	10/09/2009
K-9413	Asia-associated		Asia	Bangladesh	2009
ERS369463	Africa-associated		Europe	UK	17/03/2010
ERS180067	MSM-outbreak associated		Europe	UK	23/04/2010
ERS180081	Asia-associated		Europe	UK	18/08/2009
ERS369511	MSM-outbreak associated	A	Europe	UK	17/12/2012
ERS180118	MSM-outbreak associated	A	Europe	UK	17/08/2011
AUSMDU00003041_S14	MSM-outbreak associated	A	Oceania	Australia	21/03/2014
ERS180126	Asia-associated		Europe	UK	24/08/2011
ERS369531	MSM-outbreak associated	C	Europe	UK	28/02/2013
147/13	MSM-outbreak associated	B	Europe	UK	18/04/2013
ERS180087	Africa-associated		Europe	UK	28/03/2008
EG0257_2874375	Asia-associated		Asia	Vietnam	Aug-08
K-62	Asia-associated		Asia	Bangladesh	ND
ERS180102	MSM-outbreak associated		Europe	UK	03/08/2011
ERS180082	Africa-associated		Europe	UK	27/11/2009
ERS180060	Asia-associated		Europe	UK	12/08/2010
ERS180149	Africa-associated		Europe	UK	07/06/2011
ERS180099	MSM-outbreak associated		Europe	UK	19/05/2010
ERS372313	Africa-associated		Europe	France	04/03/2013
AUSMDU00003050_S18	MSM-outbreak associated	A	Oceania	Australia	08/06/2014
ERS369508	MSM-outbreak associated	A	Europe	UK	11/12/2012
AUSMDU00003042_S17	MSM-outbreak associated	A	Oceania	Australia	07/04/2014
ERS180089	MSM-outbreak associated		Europe	UK	08/09/2009
457/13	MSM-outbreak associated	A	Europe	UK	19/06/2013
ERS180068	Asia-associated		Europe	UK	14/09/2010
ERS180129	Africa-associated		Europe	UK	09/10/2009
307/13	MSM-outbreak associated	A	Europe	UK	20/05/2013
AUSMDU00003040_S11	MSM-outbreak associated	A	Oceania	Australia	03/03/2014
AUSMDU00003051_S21	MSM-outbreak associated	A	Oceania	Australia	07/06/2014
ERS180137	MSM-outbreak associated		Europe	UK	21/10/2009
12-2962	MSM-outbreak associated	A	Europe	France	02/05/2012

AUSMDU00003029_S1	Asia-associated		Oceania	Australia	22/08/2007
ERS180106	MSM-outbreak associated		Europe	UK	30/12/2009
sh0341_4464345	Africa-associated		Africa	South Africa	27/04/2010
503/13	MSM-outbreak associated	B	Europe	UK	05/06/2013
ERS369541	Africa-associated		Europe	UK	30/05/2013
AUSMDU00003048_S12	MSM-outbreak associated	A	Oceania	Australia	05/06/2014
ERS369468	MSM-outbreak associated	A	Europe	UK	08/07/2010
12-070	MSM-outbreak associated	A	Europe	France	09/11/2011
ERS369529	MSM-outbreak associated	A	Europe	UK	15/02/2013
AUSMDU00003033_S13	MSM-outbreak associated	A	Oceania	Australia	02/12/2013
ERS180066	MSM-outbreak associated		Europe	UK	27/10/2009
ERS180078	MSM-outbreak associated		Europe	UK	27/06/2011
EG0198_2874374	Asia-associated		Asia	Vietnam	Mar-08
ERS180083	MSM-outbreak associated		Europe	UK	30/04/2010
ERS031795	Asia-associated		Asia	Vietnam	Dec-02
ERS180114	MSM-outbreak associated		Europe	UK	19/01/2010
ERS180121	MSM-outbreak associated		Europe	UK	06/10/2009
AUSMDU00003045_S3	MSM-outbreak associated	A	Oceania	Australia	23/05/2014
12-2560	MSM-outbreak associated	A	Europe	France	16/04/2012
K-9522	Asia-associated		Asia	Bangladesh	2009
ERS369506	MSM-outbreak associated	B	Europe	UK	26/11/2012
293/13	MSM-outbreak associated	A	Europe	UK	01/05/2013
369/13B	MSM-outbreak associated	A	Europe	UK	23/04/2013
ERS369518	MSM-outbreak associated	C	Europe	UK	21/01/2013
13-1398	Outgroup		Outgroup		
ERS369525	MSM-outbreak associated	A	Europe	UK	05/02/2013
369/13A	MSM-outbreak associated	B	Europe	UK	19/03/2013
K-734	Asia-associated		Asia	Bangladesh	1999
ERS372298	MSM-outbreak associated		Europe	France	16/01/2012
ERS369497	MSM-outbreak associated	B	Europe	UK	17/10/2012
592/13	MSM-outbreak associated	A	Europe	UK	07/05/2013
ERS180085	MSM-outbreak associated		Europe	UK	07/03/2011
ERS369535	MSM-outbreak associated	C	Europe	UK	19/03/2013
ERS369509	MSM-outbreak associated	A	Europe	UK	10/12/2012
Sh06-3638	Africa-associated		Europe	France	ND
EG0302_2874376	Asia-associated		Asia	Vietnam	Jul-06
ERS180124	MSM-outbreak associated		Europe	UK	16/11/2010
ERS180075	MSM-outbreak associated		Europe	UK	23/04/2010
K-9588	Asia-associated		Asia	Bangladesh	2009
AUSMDU00003030_S4	MSM-outbreak associated		Oceania	Australia	03/05/2008
AUSMDU00003035_S19	MSM-outbreak associated	A	Oceania	Australia	12/01/2014
351/13	MSM-outbreak associated	C	Europe	UK	25/07/2013
13-6290	Asia-associated		Europe	France	24/07/2013
K-9129	Asia-associated		Asia	Bangladesh	2009
AUSMDU00003043_S20	MSM-outbreak associated	A	Oceania	Australia	06/04/2014
663/13	MSM-outbreak associated		Europe	UK	17/07/2013
ERS369498	MSM-outbreak associated		Europe	UK	18/10/2012
ERS031786	Asia-associated		Asia	Vietnam	Jun-02
ERS180071	Asia-associated		Europe	UK	21/02/2008
ERS369472	MSM-outbreak associated	A	Europe	UK	13/03/2011
ERS369542	MSM-outbreak associated	A	Europe	UK	16/07/2013
ERS180147	MSM-outbreak associated		Europe	UK	03/08/2010
548/13	MSM-outbreak associated	A	Europe	UK	16/04/2013
AUSMDU00003031_S7	Africa-associated		Oceania	Australia	02/10/2013
80-11-164-2370	Africa-associated		Oceania	Australia	13/06/2011
ERS088022	Africa-associated		Africa	South Africa	06/05/2010
K-9454	Asia-associated		Asia	Bangladesh	2009
458/13	MSM-outbreak associated	A	Europe	UK	06/08/2013
806/13	Africa-associated		Europe	UK	08/05/2013
287/13	Africa-associated		Europe	UK	01/05/2013
ERS180133	MSM-outbreak associated	A	Europe	UK	07/05/2011
K-276	Asia-associated		Asia	Bangladesh	1999
ERS369526	Asia-associated		Europe	UK	11/02/2013
ERS180092	MSM-outbreak associated	B	Europe	UK	11/10/2010
ERS369479	Asia-associated		Europe	UK	29/09/2011
K-9411	Asia-associated		Asia	Bangladesh	2009
DE0090_2868493	Asia-associated		Asia	Vietnam	May-00
AUSMDU00003052_S24	MSM-outbreak associated	A	Oceania	Australia	07/06/2014
ERS369545	MSM-outbreak associated	A	Europe	UK	20/06/2013
10-7674	Outgroup		Outgroup		
ERS180100	MSM-outbreak associated	C	Europe	UK	29/10/2010
ERS369517	MSM-outbreak associated	A	Europe	UK	18/01/2013
11-6955	Africa-associated		Europe	France	06/08/2011
76/13	MSM-outbreak associated	C	Europe	UK	26/07/2013
ERS088047	Africa-associated		Africa	South Africa	05/09/2011
AUSMDU00003036_S22	MSM-outbreak associated	A	Oceania	Australia	31/01/2014
K-10248	Asia-associated		Asia	Bangladesh	2010
sh0315_4464319	Africa-associated		Africa	South Africa	25/03/2009
80-11-358-2172	Asia-associated		Oceania	Australia	24/12/2011
SF0743	MSM-outbreak associated		North America	Canada	16/07/2013
Sh05-8094	Africa-associated		Europe	France	ND
ERS369514	MSM-outbreak associated	A	Europe	UK	31/12/2012
ERS180135	MSM-outbreak associated		Europe	UK	25/06/2008
ERS372309	MSM-outbreak associated		Europe	France	06/12/2012
11-2240	Africa-associated		Europe	France	19/04/2011
K-10368	Asia-associated		Asia	Bangladesh	2010
AUSMDU00003044_S23	MSM-outbreak associated	A	Oceania	Australia	06/04/2014
10-1295	Africa-associated		Europe	France	26/02/2010
80-13-058-4645	MSM-outbreak associated	C	Oceania	Australia	27/02/2013
ERS180117	MSM-outbreak associated	C	Europe	UK	11/04/2011
ERS180127	MSM-outbreak associated		Europe	UK	11/06/2008
ERS369503	MSM-outbreak associated	C	Europe	UK	13/11/2012
136/13	MSM-outbreak associated	C	Europe	UK	10/05/2013
ERS369495	MSM-outbreak associated	A	Europe	UK	27/09/2012
80-12-110-4516	Asia-associated		Oceania	Australia	19/04/2012
80-12-011-3999	Asia-associated		Oceania	Australia	11/01/2012
Sh08-3483	MSM-outbreak associated		Latin America	French Guiana	08/05/2008
ERS180056	MSM-outbreak associated		Europe	UK	03/09/2008
ERS369477	Africa-associated		Europe	UK	02/08/2011
ERS369544	MSM-outbreak associated	A	Europe	UK	15/08/2013
443/13	MSM-outbreak associated	B	Europe	UK	27/03/2013
12-6716	Asia-associated		Europe	France	22/08/2012
ERS180097	Africa-associated		Europe	UK	23/09/2009
11-820	Asia-associated		Europe	France	06/02/2011
10-7290	MSM-outbreak associated		Europe	France	23/09/2010
ERS369504	MSM-outbreak associated	B	Europe	UK	25/11/2012
ERS369538	MSM-outbreak associated	A	Europe	UK	12/04/2013
Sh07-4848	Africa-associated		Europe	France	ND
ERS369537	MSM-outbreak associated	A	Europe	UK	04/04/2013
K-9339	Asia-associated		Asia	Bangladesh	2009
ERS369510	Asia-associated		Europe	UK	13/12/2012
84/13	MSM-outbreak associated	A	Europe	UK	12/07/2013
ERS180120	MSM-outbreak associated		Europe	UK	24/02/2009
ERS369530	MSM-outbreak associated	B	Europe	UK	25/02/2013
Sh05-0787	Africa-associated		Europe	France	ND
AUSMDU00003047_S9	MSM-outbreak associated	A	Oceania	Australia	02/06/2014
ERS180098	MSM-outbreak associated		Europe	UK	24/12/2009
SF1102	MSM-outbreak associated	B	North America	Canada	15/08/2013
ERS369528	MSM-outbreak associated	A	Europe	UK	12/02/2013
407/13	MSM-outbreak associated	C	Europe	UK	22/07/2013

K-9375	Asia-associated		Asia	Bangladesh	2009
ERS180073	Asia-associated		Europe	UK	31/07/2009
ERS180113	Asia-associated		Europe	UK	30/09/2009
106/13	MSM-outbreak associated	A	Europe	UK	11/06/2013
ERS088049	Africa-associated		Africa	South Africa	26/05/2011
ERS180057	Africa-associated		Europe	UK	20/05/2009
12-1897	MSM-outbreak associated		Europe	France	17/03/2012
Sh09-4409	Africa-associated		Europe	France	ND
K-9278	Asia-associated		Asia	Bangladesh	2009
ERS180104	Africa-associated		Europe	UK	21/01/2009
AUSMDU00003032_S10	MSM-outbreak associated	A	Oceania	Australia	30/11/2013
627/13	MSM-outbreak associated	C	Europe	UK	30/07/2013
368/13	MSM-outbreak associated	C	Europe	UK	20/06/2013
ERS369460	MSM-outbreak associated		Europe	UK	04/02/2010
AUSMDU00003034_S16	MSM-outbreak associated	A	Oceania	Australia	21/12/2013
ERS180061	MSM-outbreak associated	B	Europe	UK	18/02/2011
ERS180077	MSM-outbreak associated		Europe	UK	04/03/2011
388/13	MSM-outbreak associated	C	Europe	UK	24/07/2013
K-10343	Asia-associated		Asia	Bangladesh	2010
ERS087995	Africa-associated		Africa	South Africa	21/10/2009
ERS180145	MSM-outbreak associated		Europe	UK	26/10/2009
ERS369475	MSM-outbreak associated		Europe	UK	08/06/2011
5/63	Outgroup		Outgroup		
ERS369493	MSM-outbreak associated	C	Europe	UK	13/09/2012
ERS180112	Africa-associated		Europe	UK	19/02/2009
ERS369521	MSM-outbreak associated	A	Europe	UK	21/01/2013
ERS369462	MSM-outbreak associated		Europe	UK	03/03/2010
Sh07-4943	Africa-associated		Europe	France	ND
ERS180076	MSM-outbreak associated		Europe	UK	16/09/2010
179/13	MSM-outbreak associated	A	Europe	UK	25/03/2013
217/13	MSM-outbreak associated	C	Europe	UK	07/06/2013
ERS180150	MSM-outbreak associated		Europe	UK	29/09/2011
ERS031772	Asia-associated		Asia	Vietnam	Sep-00
ERS180131	MSM-outbreak associated		Europe	UK	05/07/2010
11-632	MSM-outbreak associated		Europe	France	29/01/2011
ERS180107	MSM-outbreak associated		Europe	UK	26/05/2010
ERS369470	MSM-outbreak associated		Europe	UK	25/10/2010
13-3909	MSM-outbreak associated	A	Europe	France	27/05/2013
ERS369519	MSM-outbreak associated	B	Europe	UK	21/01/2013
ERS369512	Africa-associated		Europe	UK	24/12/2012
10-2493	MSM-outbreak associated		Latin America	French Guiana	24/04/2010
ERS180070	MSM-outbreak associated		Europe	UK	20/06/2011
80-12-339-4617	Asia-associated		Oceania	Australia	04/12/2012
ERS369539	MSM-outbreak associated	A	Europe	UK	23/04/2013
ERS088050	Africa-associated		Africa	South Africa	25/07/2011
ERS180125	Asia-associated		Europe	UK	07/05/2011
ERS180146	MSM-outbreak associated		Europe	UK	16/04/2010
K-9169	Asia-associated		Asia	Bangladesh	2009
ERS180101	MSM-outbreak associated		Europe	UK	05/04/2011
ERS180079	MSM-outbreak associated		Europe	UK	27/02/2008
AUSMDU00003049_S15	MSM-outbreak associated	A	Oceania	Australia	08/06/2014
AUSMDU00003046_S6	MSM-outbreak associated	A	Oceania	Australia	26/05/2014
ERS369499	Africa-associated		Europe	UK	22/10/2012
285/13	MSM-outbreak associated	B	Europe	UK	01/05/2013
sh0313_4464317	Africa-associated		Africa	South Africa	27/01/2009
ERS180091	Asia-associated		Europe	UK	18/05/2010
ERS369461	MSM-outbreak associated		Europe	UK	22/02/2010
ERS369516	MSM-outbreak associated	C	Europe	UK	07/01/2013
198/13	MSM-outbreak associated	A	Europe	UK	14/06/2013
ERS369457	Asia-associated		Europe	UK	14/03/2009
ERS180095	MSM-outbreak associated		Europe	UK	25/03/2008
ERS180122	MSM-outbreak associated		Europe	UK	21/01/2010
414/13	MSM-outbreak associated	A	Europe	UK	16/07/2013
ERS180084	Africa-associated		Europe	UK	13/10/2010
ERS180143	MSM-outbreak associated		Europe	UK	21/07/2008
ERS369520	MSM-outbreak associated	B	Europe	UK	21/01/2013
ERS180134	MSM-outbreak associated		Europe	UK	24/08/2011
ERS180108	Asia-associated		Europe	UK	05/11/2010
K-9256	Asia-associated		Asia	Bangladesh	2009
ERS369500	MSM-outbreak associated		Europe	UK	26/10/2012
ERS180132	MSM-outbreak associated		Europe	UK	01/12/2010
09-9039	MSM-outbreak associated		Latin America	French Guiana	07/11/2009
ERS180074	MSM-outbreak associated		Europe	UK	09/11/2009
ERS369523	Asia-associated		Europe	UK	29/01/2013
ERS180094	MSM-outbreak associated		Europe	UK	28/07/2011
201/13	Africa-associated		Europe	UK	14/06/2013
ERS180055	MSM-outbreak associated		Europe	UK	12/02/2008
ERS180069	Asia-associated		Europe	UK	25/02/2011
ERS180144	MSM-outbreak associated		Europe	UK	20/04/2009
ERS180072	MSM-outbreak associated		Europe	UK	23/09/2008
10262_2868448	Asia-associated		Asia	Vietnam	Feb-10
ERS180140	MSM-outbreak associated		Europe	UK	22/01/2011
ERS031757	Asia-associated		Asia	Vietnam	Apr-00
ERS180088	MSM-outbreak associated		Europe	UK	14/10/2008
ERS369502	Asia-associated		Europe	UK	31/10/2012
05-11-032-2299	Africa-associated		Oceania	Australia	01/02/2011
237/13	MSM-outbreak associated	C	Europe	UK	05/07/2013
SF7955	MSM-outbreak associated	A	North America	Canada	06/08/2013
290/13	MSM-outbreak associated	C	Europe	UK	03/04/2013
447/13	MSM-outbreak associated	C	Europe	UK	02/08/2013
204/13	MSM-outbreak associated	A	Europe	UK	25/04/2013
SF7787	MSM-outbreak associated	A	North America	Canada	18/09/2013
ERS180119	MSM-outbreak associated		Europe	UK	06/06/2008

Sample name	Patient Age	Patient Gender	Recent patient travel	Region travelled to	Country travelled to	Sample name	Further patient Sexuality
ERS180138	45 - 49	M	None			ERS180138	
228/13	40 - 44	M	None			228/13	
ERS369546	25 - 29	M	None			ERS369546	
ERS369533	40 - 44	M	Unknown			ERS369533	Heterosexual
ERS369501	25 - 29	M	None			ERS369501	MSM
ERS369492	20 - 24	F	None			ERS369492	
ERS180111	25 - 29	M	Unknown			ERS180111	
13-6754	30 - 34	M	None			13-6754	
ERS369507	30 - 34	M	Unknown			ERS369507	MSM
ERS180128	45 - 49	M	Yes	Africa	Uganda	ERS180128	
ERS369522	30 - 34	M	Unknown			ERS369522	MSM
AUSMDU00003039_S8			Unknown			AUSMDU00003039_S8	
ERS088023	0 - 5	F	Unknown			ERS088023	
11-719	70 - 75	F	Yes	Asia	India	11-719	
sh0368_4464372	25 - 29	F	Unknown			sh0368_4464372	
ERS180059	45 - 49	M	None			ERS180059	
ERS180086	20 - 24	M	Yes	Asia	India	ERS180086	
ERS180063	35 - 39	M	Unknown			ERS180063	
ERS180139	30 - 34	M	None			ERS180139	
ERS180058	50 - 54	M	None			ERS180058	
ERS369534	45 - 49	M	None			ERS369534	MSM
214/13	35 - 39	M	None			214/13	
ERS088048	0 - 5	F	Unknown			ERS088048	
80-12-224-2372	50 - 54	M	Unknown			80-12-224-2372	
ERS369505		M	Unknown			ERS369505	MSM
10-2529	50 - 54	M	Unknown			10-2529	
ERS180080	15 - 19	M	Unknown			ERS180080	
sh0343_4464347	25 - 29	F	Unknown			sh0343_4464347	
11-278	40 - 44	M	None			11-278	
695/13	70 - 75	M	Unknown			695/13	
Sh08-0350			Unknown			Sh08-0350	
SF1677		M	Unknown			SF1677	Oro-anal contact reported
10-1755	40 - 44	M	None			10-1755	
ERS180116	25 - 29	M	None			ERS180116	
ERS180096	30 - 34	M	Unknown			ERS180096	
365/13	35 - 39	M	Unknown			365/13	
ERS180103	20 - 24	M	Unknown			ERS180103	
ERS369543	25 - 29	M	Unknown			ERS369543	
K-9292	0 - 5	M	Unknown			K-9292	
ERS180148	30 - 34	M	None			ERS180148	
80-12-240-4928	20 - 24	M	Unknown			80-12-240-4928	
12-1488	40 - 44	F	Yes	Africa	Burkina Faso	12-1488	
ERS180123	45 - 49	M	None			ERS180123	
ERS180065	30 - 34	M	Yes	Low risk	Spain	ERS180065	
ERS369524	45 - 49	M	Unknown			ERS369524	MSM
AUSMDU00003037_S2			Unknown			AUSMDU00003037_S2	
ERS369496	30 - 34	F	Unknown			ERS369496	MSM
415/13	30 - 34	M	Unknown			415/13	
461/13	30 - 34	M	Unknown			461/13	
ERS180105	45 - 49	M	Yes	Low risk	Spain	ERS180105	
ERS180136	20 - 24	M	Yes	Asia	India	ERS180136	
ERS180130	45 - 49	M	None			ERS180130	
580/13	60 - 64	M	Unknown			580/13	
K-9175	0 - 5	M	Unknown			K-9175	
ERS180093	45 - 49	M	None			ERS180093	
ERS087994	0 - 5	M	Unknown			ERS087994	
512/13	20 - 24	M	Unknown			512/13	
K-9447	0 - 5	M	Unknown			K-9447	
MS0105_2882369	0 - 5	M	Unknown			MS0105_2882369	
10-1391	35 - 39	F	Unknown			10-1391	
505/13	55 - 59	M	Unknown			505/13	
348/13	50 - 54	M	Unknown			348/13	
115/13	35 - 39	M	Yes	Africa	Egypt	115/13	
ERS369453		F	None			ERS369453	
12-10736	60 - 64	F	Yes	Asia	Myanmar	12-10736	
ERS180141	40 - 44	M	None			ERS180141	
ERS369476	35 - 39	F	None			ERS369476	
ERS369515	45 - 49	M	None			ERS369515	MSM
AUSMDU00003038_S5			Unknown			AUSMDU00003038_S5	
12-321	40 - 44	M	Yes	Low risk	Spain	12-321	
ERS369494	50 - 54	M	Unknown			ERS369494	MSM
ERS180142	20 - 24	M	None			ERS180142	
sh0342_4464346	40 - 44	M	Unknown			sh0342_4464346	
MS0078_2882359	5 - 9	F	Unknown			MS0078_2882359	
K-9444	0 - 5	M	Unknown			K-9444	
11-6611	25 - 29	M	Yes	Low risk	USA	11-6611	
ERS180115	45 - 49	M	None			ERS180115	
ERS369513	40 - 44	M	None			ERS369513	MSM
ERS369547	50 - 54	M	Unknown			ERS369547	
ERS369527	35 - 39	M	None			ERS369527	MSM
EG0006_2874369	0 - 5	M	Unknown			EG0006_2874369	
ERS180110	35 - 39	M	None			ERS180110	
ERS180064	15 - 19	M	Unknown			ERS180064	
ERS180109	45 - 49	M	None			ERS180109	
ERS369536	35 - 39	M	Unknown			ERS369536	
ERS180090	30 - 34	M	None			ERS180090	
ERS369458	25 - 29	F	None			ERS369458	
K-9413	5 - 9	F	Unknown			K-9413	
ERS369463	70 - 75	F	None			ERS369463	
ERS180067	45 - 49	M	None			ERS180067	
ERS180081	35 - 39	M	Yes	Asia	Maldives	ERS180081	
ERS369511	40 - 44	M	Unknown			ERS369511	MSM
ERS180118	35 - 39	M	None			ERS180118	
AUSMDU00003041_S14			Unknown			AUSMDU00003041_S14	
ERS180126	35 - 39	M	Yes	Asia	India	ERS180126	
ERS369531	40 - 44	M	None			ERS369531	MSM
147/13	45 - 49	M	Unknown			147/13	
ERS180087	30 - 34	M	Unknown			ERS180087	
EG0257_2874375	5 - 9	F	Unknown			EG0257_2874375	
K-62			Unknown			K-62	
ERS180102	30 - 34	M	None			ERS180102	
ERS180082	45 - 49	M	Yes	Africa	Morocco	ERS180082	
ERS180060	25 - 29	M	None			ERS180060	
ERS180149	50 - 54	M	Yes	Africa	Kenya	ERS180149	
ERS180099	55 - 59	M	None			ERS180099	
ERS372313	5 - 9	F	None			ERS372313	
AUSMDU00003050_S18			Unknown			AUSMDU00003050_S18	
ERS369508	50 - 54	M	Unknown			ERS369508	MSM
AUSMDU00003042_S17			Unknown			AUSMDU00003042_S17	
ERS180089	45 - 49	M	None			ERS180089	
457/13	35 - 39	M	None			457/13	
ERS180068	45 - 49	M	Yes	Asia	India	ERS180068	
ERS180129	40 - 44	M	Yes	Africa	Uganda	ERS180129	
307/13	15 - 19	M	Unknown			307/13	
AUSMDU00003040_S11			Unknown			AUSMDU00003040_S11	
AUSMDU00003051_S21			Unknown			AUSMDU00003051_S21	
ERS180137	35 - 39	M	None			ERS180137	
12-2962	35 - 39	M	None			12-2962	

AUSMDU00003029_S1		M	Unknown			AUSMDU00003029_S1		
ERS180106	55 - 59	M	Yes	Low risk	Spain	ERS180106		
sh0341_4464345	50 - 54	M	Unknown			sh0341_4464345		
503/13	25 - 29	M	Unknown			503/13		
ERS369541	5 - 9	F	None			ERS369541		
AUSMDU00003048_S12		M	Unknown			AUSMDU00003048_S12		
ERS369468	40 - 44	M	Unknown			ERS369468		
12-070	45 - 49	M	Yes	Low risk	Belgium	12-070		
ERS369529	25 - 29	M	Unknown			ERS369529		MSM
AUSMDU00003033_S13		M	Unknown			AUSMDU00003033_S13		
ERS180066	30 - 34	M	None			ERS180066		
ERS180078	35 - 39	M	Yes	Low risk	Spain	ERS180078		
EG0198_2874374	0 - 5	F	Unknown			EG0198_2874374		
ERS180083	35 - 39	M	None			ERS180083		
ERS031795	0 - 5	M	Unknown			ERS031795		
ERS180114	45 - 49	M	None			ERS180114		
ERS180121	50 - 54	M	None			ERS180121		
AUSMDU00003045_S3		M	Unknown			AUSMDU00003045_S3		
12-2560	35 - 39	M	None			12-2560		
K-9522	0 - 5	F	Unknown			K-9522		
ERS369506	30 - 34	M	Unknown			ERS369506		MSM
293/13	40 - 44	M	None			293/13		
369/13B	45 - 49	M	Unknown			369/13B		
ERS369518	50 - 54	M	None			ERS369518		MSM
13-1398						13-1398		
ERS369525	35 - 39	M	None			ERS369525		
369/13A	35 - 39	M	None			369/13A		
K-734			Unknown			K-734		
ERS372298	10 - 14	M	None			ERS372298		
ERS369497	25 - 29	M	Unknown			ERS369497		MSM
592/13	30 - 34	M	Unknown			592/13		
ERS180085	25 - 29	M	Yes	Low risk	European continent	ERS180085		
ERS369535	50 - 54	M	Unknown			ERS369535		MSM
ERS369509	55 - 59	M	None			ERS369509		MSM
Sh06-3638		F	Yes	Africa	Niger	Sh06-3638		
EG0302_2874376	0 - 5	M	Unknown			EG0302_2874376		
ERS180124	30 - 34	M	Yes	Latin America	Peru	ERS180124		
ERS180075	40 - 44	M	Yes	Low risk	Netherlands	ERS180075		
K-9588	0 - 5	F	Unknown			K-9588		
AUSMDU00003030_S4		M	None			AUSMDU00003030_S4		
AUSMDU00003035_S19		M	Unknown			AUSMDU00003035_S19		
351/13	35 - 39	M	Unknown			351/13		
13-6290	20 - 24	F	Yes	Asia	India	13-6290		
K-9129	10 - 14	F	Unknown			K-9129		
AUSMDU00003043_S20		M	Unknown			AUSMDU00003043_S20		
663/13	40 - 44	M	None			663/13		
ERS369498	50 - 54	M	Unknown			ERS369498		MSM
ERS031786	0 - 5	M	Unknown			ERS031786		
ERS180071	15 - 19	M	Unknown			ERS180071		
ERS369472	40 - 44	F	None			ERS369472		
ERS369542	40 - 44	M	Unknown			ERS369542		
ERS180147	30 - 34	M	None			ERS180147		
548/13	45 - 49	M	None			548/13		
AUSMDU00003031_S7		F	Yes	Africa	African continent	AUSMDU00003031_S7		
80-11-164-2370	40 - 44	M	Unknown			80-11-164-2370		
ERS088022	5 - 9	F	Unknown			ERS088022		
K-9454	0 - 5	F	Unknown			K-9454		
458/13	45 - 49	M	Unknown			458/13		
806/13	65 - 69	M	Yes	Africa	Kenya	806/13		
287/13	25 - 29	M	Yes	Africa	Ghana	287/13		
ERS180133	25 - 29	M	None			ERS180133		
K-276			Unknown			K-276		
ERS369526	30 - 34	F	None			ERS369526		
ERS180092	30 - 34	M	None			ERS180092		
ERS369479	15 - 19	F	None			ERS369479		
K-9411	40 - 44	F	Unknown			K-9411		
DE0090_2868493	0 - 5	M	Unknown			DE0090_2868493		
AUSMDU00003052_S24		M	Unknown			AUSMDU00003052_S24		
ERS369545	35 - 39	M	Unknown			ERS369545		
10-7674						10-7674		
ERS180100	40 - 44	M	None			ERS180100		
ERS369517	20 - 24	M	Unknown			ERS369517		MSM
11-6955	65 - 69	M	Yes	Low risk	Canada	11-6955		
76/13	50 - 54	M	Unknown			76/13		
ERS088047	0 - 5	M	Unknown			ERS088047		
AUSMDU00003036_S22		M	Unknown			AUSMDU00003036_S22		
K-10248	0 - 5	F	Unknown			K-10248		
sh0315_4464319	30 - 34	F	Unknown			sh0315_4464319		
80-11-358-2172	50 - 54	M	Unknown			80-11-358-2172		Oro-anal contact reported
SF0743		M	Unknown			SF0743		
Sh05-8094		F	Yes	Africa	Mali	Sh05-8094		
ERS369514	60 - 64	M	None			ERS369514		MSM
ERS180135	30 - 34	M	Unknown			ERS180135		
ERS372309	0 - 5	F	None			ERS372309		
11-2240	65 - 69	F	Yes	Africa	Tanzania	11-2240		
K-10368			Unknown			K-10368		
AUSMDU00003044_S23		M	Unknown			AUSMDU00003044_S23		
10-1295	25 - 29	M	Yes	Africa	Ghana	10-1295		
80-13-058-4645	25 - 29	M	Unknown			80-13-058-4645		
ERS180117	35 - 39	M	None			ERS180117		
ERS180127	25 - 29	M	Unknown			ERS180127		
ERS369503		M	None			ERS369503		
136/13	40 - 44	M	None			136/13		
ERS369495	30 - 34	M	None			ERS369495		MSM
80-12-110-4516	5 - 9	F	Yes	Asia	India	80-12-110-4516		
80-12-011-3999	40 - 44	M	Unknown			80-12-011-3999		
Sh08-3483			Unknown			Sh08-3483		
ERS180056	35 - 39	M	Unknown			ERS180056		
ERS369477	30 - 34	F	None			ERS369477		
ERS369544	50 - 54	M	Unknown			ERS369544		
443/13	40 - 44	M	Unknown			443/13		
12-6716	45 - 49	M	Unknown			12-6716		
ERS180097	25 - 29	M	Yes	Africa	Nigeria	ERS180097		
11-820	70 - 75	F	Yes	Asia	India	11-820		
10-7290	35 - 39	M	None			10-7290		
ERS369504	50 - 54	M	Unknown			ERS369504		MSM
ERS369538	40 - 44	M	Unknown			ERS369538		
Sh07-4848		F	Yes	Africa	Togo	Sh07-4848		
ERS369537	20 - 24	M	None			ERS369537		MSM
K-9339	0 - 5	M	Unknown			K-9339		
ERS369510	40 - 44	M	Unknown			ERS369510		Heterosexual
84/13	25 - 29	M	Unknown			84/13		
ERS180120	45 - 49	M	Yes	Low risk	Spain	ERS180120		
ERS369530	45 - 49	M	Unknown			ERS369530		MSM
Sh05-0787		M	Yes	Africa	Congo	Sh05-0787		
AUSMDU00003047_S9		M	Unknown			AUSMDU00003047_S9		
ERS180098	50 - 54	M	None			ERS180098		
SF1102		M	Unknown			SF1102		Oro-anal contact reported
ERS369528	25 - 29	M	Unknown			ERS369528		MSM
407/13	65 - 69	M	Unknown			407/13		

K-9375	60 - 64	F	Unknown				K-9375		
ERS180073	35 - 39	M	Yes	Asia	India		ERS180073		
ERS180113	25 - 29	M	Yes	Asia	India		ERS180113		
106/13	60 - 64	M	Unknown				106/13		
ERS088049	0 - 5	M	Unknown				ERS088049		
ERS180057	35 - 39	M	Yes	Africa	Ghana		ERS180057		
12-1897	45 - 49	M	Yes	Low risk	Ireland		12-1897		
Sh09-4409		M	Yes	Africa	Togo		Sh09-4409		
K-9278	0 - 5	F	Unknown				K-9278		
ERS180104	30 - 34	M	Yes	Africa	African continent		ERS180104		
AUSMDU00003032_S10		M	Unknown				AUSMDU00003032_S10		
627/13	60 - 64	M	None				627/13		
368/13	20 - 24	M	None				368/13		
ERS369460	40 - 44	M	Unknown				ERS369460		
AUSMDU00003034_S16		M	Unknown				AUSMDU00003034_S16		
ERS180061	30 - 34	M	None				ERS180061		
ERS180077	55 - 59	M	None				ERS180077		
388/13	55 - 59	M	Unknown				388/13		
K-10343	0 - 5	F	Unknown				K-10343		
ERS087995	5 - 9	F	Unknown				ERS087995		
ERS180145	35 - 39	M	None				ERS180145		
ERS369475	40 - 44	M	None				ERS369475		
5/63							5/63		
ERS369493	45 - 49	M	Unknown				ERS369493		MSM
ERS180112	45 - 49	M	Yes	Africa	South Africa		ERS180112		
ERS369521	35 - 39	M	None				ERS369521		MSM
ERS369462	40 - 44	M	Unknown				ERS369462		
Sh07-4943		M	Yes	Africa	Algeria		Sh07-4943		
ERS180076	40 - 44	M	None				ERS180076		
179/13	40 - 44	M	None				179/13		
217/13	45 - 49	M	Unknown				217/13		
ERS180150	20 - 24	M	None				ERS180150		
ERS031772	0 - 5	F	Unknown				ERS031772		
ERS180131	45 - 49	M	Yes	Latin America	Mexico		ERS180131		
11-632	25 - 29	M	None				11-632		
ERS180107	25 - 29	M	None				ERS180107		
ERS369470	40 - 44	M	Unknown				ERS369470		
13-3909	40 - 44	M	Yes	Low risk	Spain		13-3909		
ERS369519	35 - 39	M	None	Africa	Egypt		ERS369519		MSM
ERS369512	40 - 44	M	Yes	Africa	Egypt		ERS369512		Heterosexual
10-2493	20 - 24	M	Unknown				10-2493		
ERS180070	40 - 44	M	None				ERS180070		
80-12-339-4617	45 - 49	F	Yes	Asia	Cambodia		80-12-339-4617		
ERS369539	40 - 44	M	None				ERS369539		
ERS088050	5 - 9	M	Unknown				ERS088050		
ERS180125	20 - 24	M	Yes	Asia	India		ERS180125		
ERS180146	55 - 59	M	None				ERS180146		
K-9169	0 - 5	M	Unknown				K-9169		
ERS180101	40 - 44	M	None				ERS180101		
ERS180079	25 - 29	M	Unknown				ERS180079		
AUSMDU00003049_S15		M	Unknown				AUSMDU00003049_S15		
AUSMDU00003046_S6		M	Unknown				AUSMDU00003046_S6		
ERS369499	45 - 49	M	Yes	Africa	Nigeria		ERS369499		MSM
285/13	35 - 39	M	None				285/13		
sh0313_4464317	20 - 24	F	Unknown				sh0313_4464317		
ERS180091	40 - 44	M	Yes	Low risk	Spain		ERS180091		
ERS369461	40 - 44	M	Unknown				ERS369461		
ERS369516	40 - 44	M	None				ERS369516		MSM
198/13	30 - 34	M	None				198/13		
ERS369457	55 - 59	F	None				ERS369457		
ERS180095	30 - 34	M	Unknown				ERS180095		
ERS180122	40 - 44	M	None				ERS180122		
414/13	25 - 29	M	Unknown				414/13		
ERS180084	35 - 39	M	Yes	Asia	Pakistan		ERS180084		
ERS180143	35 - 39	M	Unknown				ERS180143		
ERS369520	30 - 34	M	None				ERS369520		MSM
ERS180134	35 - 39	M	None				ERS180134		
ERS180108	50 - 54	M	Yes	Asia	India		ERS180108		
K-9256	35 - 39	F	Unknown				K-9256		
ERS369500	40 - 44	M	Unknown				ERS369500		MSM
ERS180132	30 - 34	M	None				ERS180132		
09-9039	40 - 44	F	Unknown				09-9039		
ERS180074	40 - 44	M	None				ERS180074		
ERS369523	40 - 44	M	Yes	Asia	India		ERS369523		Heterosexual
ERS180094	35 - 39	M	None				ERS180094		
201/13	30 - 34	M	None				201/13		
ERS180055	45 - 49	M	Unknown				ERS180055		
ERS180069	25 - 29	M	Yes	Asia	India		ERS180069		
ERS180144	50 - 54	M	None				ERS180144		
ERS180072	40 - 44	M	Unknown				ERS180072		
10262_2868448	0 - 5	F	Unknown				10262_2868448		
ERS180140	30 - 34	M	None				ERS180140		
ERS031757	0 - 5	F	Unknown				ERS031757		
ERS180088	35 - 39	M	Unknown				ERS180088		
ERS369502	25 - 29	M	Yes	Asia	India		ERS369502		Heterosexual
05-11-032-2299	5 - 9	M	Unknown				05-11-032-2299		
237/13	25 - 29	M	None				237/13		
SF7955		M	Unknown				SF7955		Oro-anal contact reported
290/13	30 - 34	M	Yes	Low risk	Australia		290/13		
447/13	40 - 44	M	Unknown				447/13		
204/13	30 - 34	M	None				204/13		
SF7787		M	Unknown				SF7787		Oro-anal contact reported
ERS180119	45 - 49	M	Unknown				ERS180119		

Antimicrobial resistance p							
Patitent Pair	Azithromycin resistance (MIC [mg/L])	Ampicillin (8mg/L)	Chloramphenicol (16mg/L)	Sample name	Streptomycin (8,16mg/L)	Tetracycline (8mg/L)	Trimethoprim (2mg/L)
ERS369543		R	R	ERS180138	P	R	S
		R	R	228/13	R	R	R
		R	R	ERS369546			
		R	R	ERS369533	S	R	S
		R	R	ERS369501	P	R	S
		R	R	ERS369492			
	>256	R	R	ERS180111	P	R	S
		R	R	13-6754	R	R	S
	2	R	R	ERS369507	P	R	S
		R	R	ERS180128	S	R	S
		R	R	ERS369522	R	R	S
	>256	R	R	AUSMDU00003039_S8	R	R	S
		S	S	ERS08023	S	S	R
		R	R	11-719	R	R	R
		S	S	sh0368_4464372	S	S	R
		R	R	ERS180059	P	R	S
		S	R	ERS180086	P	R	R
		R	R	ERS180063	P	R	S
		R	R	ERS180139	P	R	S
		R	R	ERS180058	P	R	R
		R	R	ERS369534	S	R	S
	256	R	R	214/13	R	R	R
		S	S	ERS08048	S	S	R
		R	S	80-12-224-2372			
	>256	R	R	ERS369505	P	R	R
		S	R	10-2529	R	R	S
		S	R	ERS180080	P	R	R
		S	S	sh0343_4464347	S	S	R
	2	R	R	11-278	R	R	S
	1	S	R	695/13	R	R	R
			Sh08-0350				
			SF1677				
	R	R	10-1755	R	R	S	
	R	R	ERS180116	P	R	S	
	R	R	ERS180096	P	R	R	
	R	R	365/13	R	R	R	
	R	R	ERS180103	P	R	S	
	R	R	ERS369543	R	R	S	
			K-9292				
1	R	R	ERS180148	P	R	R	
	R	R	80-12-240-4928				
	R	R	12-1488	R	R	S	
	S	R	ERS180123	P	R	S	
	R	R	ERS180065	R	R	S	
128	R	S	ERS369524	R	R	R	
>256	R	R	AUSMDU00003037_S2	R	R	S	
64	R	R	ERS369496	P	R	R	
>256	R	R	415/13	R	R	R	
>256	R	R	461/13	R	R	R	
	R	R	ERS180105	R	R	S	
	S	R	ERS180136	P	R	S	
	R	R	ERS180130	P	R	S	
	R	R	580/13	R	R	R	
			K-9175				
	S	S	ERS180093		S	R	
	R	R	ERS087994	S	R	R	
	R	R	512/13				
	R	R	K-9447				
	R	R	MS0105_2882369	S	R	R	
>256	R	R	10-1391	R	R	S	
	R	R	505/13	R	R	S	
	R	R	348/13	R	R	R	
1	R	R	115/13	R	R	S	
	S	R	ERS369453				
	R	R	12-10736	R	R	R	
192	R	R	ERS180141	P	R	R	
	R	S	ERS369476				
>256	R	R	ERS369515	R	R	R	
	R	R	AUSMDU00003038_S5	R	R	S	
	R	R	12-321	R	R	S	
	R	R	ERS369494				
	R	R	ERS180142	P	R	S	
	S	S	sh0342_4464346	S	S	R	
	R	R	MS0078_2882359	S	R	R	
			K-9444				
3	R	R	11-6611	R	R	S	
	R	R	ERS180115	P	R	R	
	R	R	ERS369513	R	R	S	
	R	R	ERS369547				
	R	R	ERS369527	S	R	S	
128	R	R	EG0006_2874369	P	R	R	
	R	R	ERS180110	P	R	R	
	R	S	ERS180064	R	R	R	
	S	R	ERS180109	P	R	R	
	R	R	ERS369536	R	R	S	
	R	R	ERS180090	P	R	S	
			ERS369458				
			K-9413				
	R	R	ERS369463				
	S	R	ERS180067	P	R	S	
	R	R	ERS180081	R	R	R	
	R	R	ERS369511	P	R	S	
	R	R	ERS180118	P	R	S	
>256	R	R	AUSMDU00003041_S14	R	R	S	
	R	R	ERS180126				
>256	R	R	ERS369531	R	R	R	
192	R	S	147/13	R	S	R	
	S	R	ERS180087	P	R	R	
	R	R	EG0257_2874375	S	R	R	
			K-62				
	R	R	ERS180102	P	R	S	
	S	S	ERS180082	S	S	S	
	S	R	ERS180060	P	S	R	
	R	R	ERS180149	P	R	R	
	R	R	ERS180099	P	R	R	
	S	S	ERS372313	S	S	R	
>256	R	R	AUSMDU00003050_S18	R	R	S	
	R	R	ERS369508	P	R	S	
>256	R	R	AUSMDU00003042_S17	R	R	S	
	S	R	ERS180089	S	S	R	
	R	R	457/13	R	R	S	
	S	R	ERS180068	P	R	R	
	R	R	ERS180129	R	R	R	
	R	R	307/13	R	R	S	
96	R	R	AUSMDU00003040_S11	R	R	S	
>256	R	R	AUSMDU00003051_S21	R	R	S	
>256	R	R	ERS180137	P	R	R	
	R	R	12-2962	R	R	S	

					K-9375				
					ERS180073				
					ERS180113	S	S		R
					106/13	R	R		S
					ERS0808049	S	S		R
					ERS180057	P	R		R
					12-1897	R	R		S
					Sh09-4409				
					K-9278				
					ERS180104	P	R		S
					AUSMDU00003032_S10	R	R		S
					627/13	R	R		R
					568/13	R	R		R
					ERS369460				
					AUSMDU00003034_S16	R	R		S
					ERS180061	P	R		S
					ERS180077	P	R		R
					388/13	R	R		R
					K-10343				
					ERS087995	S	S		S
					ERS180145	P	R		R
					ERS369475	P	R		S
					5/63				
					ERS369493	P	R		R
					ERS180112	S	S		S
					ERS369521	R	R		S
					ERS369462				
					Sh07-4943				
					ERS180076	P	R		R
					179/13	R	R		S
					217/13	R	R		S
					ERS180150	P	R		S
					ERS031772	R	R		R
					ERS180131	P	R		S
					11-632	R	R		S
					ERS180107	P	R		S
					ERS369470				
					13-3909	R	R		S
					ERS369519	R	R		S
					ERS369512	R	R		S
					10-2493	R	R		R
					ERS180070	P	R		S
					80-12-339-4617				
					ERS369539	R	R		R
					ERS0808050	S	S		R
					ERS180125	S	S		S
					ERS180146	P	R		R
					K-9169				
					ERS180101	P	R		S
					ERS180079	P	R		S
					AUSMDU00003049_S15	R	R		S
					AUSMDU00003046_S6	R	R		S
					ERS369499	P	R		R
					285/13	R	R		R
					sh0313_4464317	S	S		S
					ERS180091	P	R		R
					ERS369461				
					ERS369516	R	R		R
					198/13	R	R		S
					ERS369457				
					ERS180095	P	R		S
					ERS180122	P	R		S
					414/13	R	R		S
					ERS180084	R	R		R
					ERS180143	P	R		S
					ERS369520	R	R		R
					ERS180134				
					ERS180108	P	R		R
					K-9256				
					ERS369500	P	R		S
					ERS180132	S	S		R
					09-9039	R	R		S
					ERS180074	P	R		S
					ERS369523	R	R		R
					ERS180094	S	R		R
					201/13	R	R		R
					ERS180055	P	R		R
					ERS180069	P	R		R
					ERS180144	P	R		S
					ERS180072	P	R		S
					10262_2868448	S	S		R
					ERS180140	P	R		S
					ERS031757	R	R		S
					ERS180088	P	R		S
					ERS369502	P	R		R
					05-11-032-2299				
					237/13	R	R		R
					SF7955				
					290/13	R	R		R
					447/13	R	R		R
					204/13	R	R		S
					SF7787				
					ERS180119	P	R		S

Key to phenotype
R Resistant
S Sensitive
P Partial
Blank Unknown

Phenotype

Sulfonamide (256mg/L)	Nalidixic acid (16mg/L)	Sample name	Ciprofloxacin (0.034,0.064,0.5mg/L)	Cefotaxime (0.5, 1 mg/L)	Ertapenem (0.064,0.5mg/dL)
S	S	ERS180138	S	S	S
R	S	228/13	S	S	S
		ERS369546			
R	S	ERS369533	S	S	S
S	S	ERS369501	S	S	S
		ERS369492			
S	S	ERS180111	S	S	S
S	S	13-6754	S		
S	S	ERS369507	S	S	S
R	S	ERS180128	S	S	S
S	S	ERS369522	S	S	S
S	S	AUSMDU00003039_S8	S	S	
R	S	ERS08023	S		
R	S	11-719	R		
R	S	sh0368_4464372	S		
S	S	ERS180059	S	S	S
R	R	ERS180086	R	S	S
S	S	ERS180063	S	S	S
S	S	ERS180139	S	S	S
R	S	ERS180058	S	S	S
R	S	ERS369534	S	S	S
R	S	214/13	S	S	S
R	S	ERS08048	S		
		80-12-224-2372			
R	S	ERS369505	S	S	S
S	S	10-2529	S		
R	R	ERS180080	R	S	S
R	S	sh0343_4464347	S		
S	S	11-278	S		
R	R	695/13	P	S	S
		Sh08-0350			
		SF1677			
S	S	10-1755	S		
R	S	ERS180116	S	S	S
R	S	ERS180096	S	S	S
R	S	365/13	S	S	S
S	S	ERS180103	S	S	S
S	S	ERS369543	S	S	S
		K-9292			
R	S	ERS180148	S	S	S
		80-12-240-4928			
S	S	12-1488	S		
S	S	ERS180123	S	S	S
S	S	ERS180065	S	S	S
R	S	ERS369524	S	S	S
S	S	AUSMDU00003037_S2	S	S	
R	S	ERS369496	S	S	S
R	S	415/13	S	S	S
R	S	461/13	S	S	S
S	S	ERS180105	S	S	S
S	R	ERS180136	R	S	S
S	R	ERS180130	S	S	S
R	S	580/13	S	S	S
		K-9175			
		ERS180093			
R	S	ERS087994	S		
R	S	512/13	S	S	S
		K-9447			
		MS0105_2882369			
S	S	10-1391	S		
S	S	505/13	S	S	S
R	S	348/13	S	S	S
S	S	115/13	S	S	S
		ERS369453			
R	S	12-10736	S		
R	S	ERS180141	S	S	S
		ERS369476			
R	S	ERS369515	S	S	S
S	S	AUSMDU00003038_S5	S	S	
S	S	12-321	S		
		ERS369494			
S	S	ERS180142	S	S	S
R	S	sh0342_4464346	S		
		MS0078_2882359			
		K-9444			
S	S	11-6611	S		
R	S	ERS180115	S	S	S
S	S	ERS369513	S	S	S
		ERS369547			
R	S	ERS369527	S	S	S
		EG0006_2874369			
R	S	ERS180110	S	S	S
R	S	ERS180064	S	S	S
R	R	ERS180109	R	S	S
S	S	ERS369536	S	S	S
S	S	ERS180090	S	S	S
		ERS369458			
		K-9413			
		ERS369463			
S	S	ERS180067	S	S	S
R	R	ERS180081	R	S	S
S	S	ERS369511	S	S	S
S	S	ERS180118	S	S	S
S	S	AUSMDU00003041_S14	S	S	
		ERS180126			
R	S	ERS369531	S	S	S
R	S	147/13	S	S	S
R	S	ERS180087	S	S	S
		EG0257_2874375			
		K-62			
S	S	ERS180102	S	S	S
S	S	ERS180082	S	S	S
R	S	ERS180060	R	S	S
R	S	ERS180149	S	S	S
R	S	ERS180099	S	S	S
S	S	ERS372313	S		
S	S	AUSMDU00003050_S18	S	S	
S	S	ERS369508	S	S	S
S	S	AUSMDU00003042_S17	S	S	
S	R	ERS180089	P	S	S
S	S	457/13	S	S	S
R	R	ERS180068	R	S	S
R	S	ERS180129	S	S	S
S	S	307/13	S	S	S
S	S	AUSMDU00003040_S11	S	S	
S	S	AUSMDU00003051_S21	S	S	
R	S	ERS180137	S	S	S
S	S	12-2962	S		

S	S	AUSMDU00003029_S1	S	S	
S	S	ERS180106	S	S	S
R	S	sh0341_4464345	S		
R	S	503/13	S	S	S
R		ERS369541			
S	S	AUSMDU00003048_S12	S	S	
		ERS369468			
S	S	12-070	S		
R	S	ERS369529	S	S	S
S	S	AUSMDU00003033_S13	S	S	
S	S	ERS180066	S	S	S
S	S	ERS180078	S	S	S
R		EG0198_2874374	S		
		ERS180083			
		ERS031795			
S	S	ERS180114	S	S	S
S	S	ERS180121	S	S	S
S	S	AUSMDU00003045_S3	S	S	
		12-2560	S		
		K-9522			
R	S	ERS369506	S	S	S
S	S	293/13	S	S	S
S	S	369/13B	S	S	S
R	S	ERS369518	S	S	S
		13-1398			
		ERS369525			
R	S	369/13A	S	S	S
		K-734			
R	S	ERS372298	S		
S	S	ERS369497	S	S	S
S	S	592/13	S	S	S
S	S	ERS180085	S	S	S
R	S	ERS369535	S	S	S
S	S	ERS369509	S	S	S
		Sh06-3638			
		EG0302_2874376	S		
S	S	ERS180124	S	S	S
S	S	ERS180075	S	S	S
		K-9588			
S	S	AUSMDU00003030_S4	S	S	
S	S	AUSMDU00003035_S19	S	S	
R	S	351/13	S	S	S
R	R	13-6290	R	S	
		K-9129			
S	S	AUSMDU00003043_S20	S	S	
S	S	663/13	S	S	S
S	S	ERS369498	S	S	S
		ERS031786			
R	R	ERS180071	R	S	S
		ERS369472			
R	S	ERS369542	S	S	S
S	S	ERS180147	S	S	S
S	S	548/13	S	S	S
S	S	AUSMDU00003031_S7	S	S	
		80-11-164-2370			
S	S	ERS08022	S		
		K-9454			
R	R	458/13	P	S	S
R	S	806/13	S	S	S
S	S	287/13	S	S	S
S	S	ERS180133	S	S	S
		K-276			
R	R	ERS369526	R	S	S
S	S	ERS180092	S	S	S
		ERS369479			
		K-9411			
	S	DE0090_2868493	S		
S	S	AUSMDU00003052_S24	S	S	
		ERS369545			
		10-7674			
R	S	ERS180100	S	S	S
S	S	ERS369517	S	S	S
R	S	11-6955	S		
S	S	76/13	S	S	S
R	S	ERS08047	S		
S	S	AUSMDU00003036_S22	S	S	
		K-10248			
R	S	sh0315_4464319	S		
		80-11-358-2172			
		SF0743			
S	S	Sh05-8094	S	S	S
S	S	ERS369514	S	S	S
R	S	ERS180135	S		
R	S	ERS372309	S		
		11-2240	S		
		K-10368			
S	S	AUSMDU00003044_S23	S	S	
R	S	10-1295	S		
		80-13-058-4645			
R	S	ERS180117	S	S	S
R	S	ERS180127	S	S	S
S	S	ERS369503	S	S	S
R	S	136/13	S	S	S
S	S	ERS369495	S	S	S
		80-12-110-4516			
		80-12-011-3999			
		Sh08-3483			
S	S	ERS180056	S	S	S
		ERS369477			
S	S	ERS369544	S	S	S
R	S	443/13	S	S	S
S	R	12-6716	R		
S	S	ERS180097	R	S	S
R	S	11-820	R		
S	S	10-7290	S		
R	S	ERS369504	S	S	S
		ERS369538			
		Sh07-4848			
R	S	ERS369537	S	S	S
		K-9339			
R	R	ERS369510	R	S	S
S	S	84/13	S	S	S
S	S	ERS180120	S	S	S
R	S	ERS369530	S	S	S
		Sh05-0787			
S	S	AUSMDU00003047_S9	S	S	
R	S	ERS180098	S	S	S
		SF1102			
R	S	ERS369528	S	S	S
S	S	407/13	S	S	S

		K-9375			
		ERS180073			
S	S	ERS180113	S	S	S
S	S	106/13	S	S	S
R	S	ERS08049	S		
R	S	ERS180057	S	S	S
S	S	12-1897	S		
		Sh09-4409			
		K-9278			
S	S	ERS180104	S	S	S
S	S	AUSMDU00003032_S10	S	S	S
R	R	627/13	P	S	S
R	S	368/13	S	S	S
		ERS369460			
S	S	AUSMDU00003034_S16	S	S	S
S	S	ERS180061	S	S	S
R	S	ERS180077	S	S	S
R	S	388/13	S	S	S
		K-10343			
R	S	ERS087995	S		
R	S	ERS180145	S	S	S
S	S	ERS369475	S	S	S
		5/63			
R	S	ERS369493	S	S	S
S	S	ERS180112	S	S	S
S	S	ERS369521	S	S	S
		ERS369462			
		Sh07-4943			
R	S	ERS180076	S	S	S
S	S	179/13	S	S	S
S	S	217/13	S	S	S
S	S	ERS180150	S	S	S
		ERS031772			
S	S	ERS180131	S	S	S
S	S	11-632	S		
S	S	ERS180107	S	S	S
		ERS369470			
S	S	13-3909	S		
R	S	ERS369519	S	S	S
S	S	ERS369512	S	S	S
R	S	10-2493	S		
S	S	ERS180070	S	S	S
		80-12-339-4617			
R	S	ERS369539	S	S	S
R	S	ERS08050	S		
S	S	ERS180125	P	S	S
R	S	ERS180146	S	S	S
		K-9169			
S	S	ERS180101	S	S	S
S	S	ERS180079	S	S	S
S	S	AUSMDU00003049_S15	S	S	S
S	S	AUSMDU00003046_S6	S	S	S
R	S	ERS369499	S	S	S
R	S	285/13	S	S	S
S	S	sh0313_4464317	S		
S	R	ERS180091	R	S	S
		ERS369461			
R	S	ERS369516	S	S	S
S	S	198/13	S	S	S
		ERS369457			
S	S	ERS180095	S	S	S
S	S	ERS180122	S	S	S
S	S	414/13	S	S	S
R	S	ERS180084	S	S	S
S	S	ERS180143	S	S	S
R	S	ERS369520	S	S	S
		ERS180134			
S	R	ERS180108	R	S	S
		K-9256			
S	S	ERS369500	S	S	S
R	S	ERS180132	S	S	S
S	S	09-9039	S		
S	S	ERS180074	S	S	S
R	R	ERS369523	R	S	S
R	S	ERS180094	S	S	S
R	S	201/13	S	S	S
R	S	ERS180055	S	S	S
S	R	ERS180069	R	S	S
S	S	ERS180144	S	S	S
S	S	ERS180072	S	S	S
		10262_2868448			
S	S	ERS180140	S	S	S
		ERS031757			
S	S	ERS180088	S	S	S
R	R	ERS369502	R	S	S
		05-11-032-2299			
R	S	237/13	S	S	S
		SF7955			
R	S	290/13	S	S	S
R	S	447/13	S	S	S
S	S	204/13	S	S	S
		SF7787			
S	S	ERS180119	S	S	S

Sample name	gyrA	parC	SRL	pKSR100	pCERC	1 Integron (on pKS)
ERS180138	Wildtype	Wildtype	Present	Absent	Absent	Absent
228/13	ND	Wildtype	Present	Present	Absent	Present
ERS369546	Wildtype	Wildtype	Present	Present	Absent	Absent
ERS369533	Wildtype	Wildtype	Present	Present	Absent	Absent
ERS369501	Wildtype	Wildtype	Present	Present	Absent	Absent
ERS369492	S83L_D87G.	S80I				
ERS180111	Wildtype	Wildtype	Present	Absent	Absent	Absent
13-6754	Wildtype	Wildtype	Present	Present	Absent	Absent
ERS369507	Wildtype	Wildtype	Present	Present	Absent	Absent
ERS180128	Wildtype	Wildtype				
ERS369522	Wildtype	Wildtype	Present	Present	Absent	Absent
AUSMDU00003039_S8	ND	ND	Present	Present	Absent	Absent
ERS088023	Wildtype	Wildtype				
11-719	S83L_D87G.	S80I				
sh0368_4464372	Wildtype	Wildtype				
ERS180059	Wildtype	Wildtype	Present	Absent	Absent	Absent
ERS180086	S83L_D87G	S80I				
ERS180063	Wildtype	Wildtype	Present	Absent	Absent	Absent
ERS180139	Wildtype	Wildtype	Present	Absent	Absent	Absent
ERS180058	Wildtype	Wildtype				
ERS369534	Wildtype	Wildtype	Present	Present	Absent	Absent
214/13	Wildtype	Wildtype	Present	Present	Absent	Present
ERS088048	Wildtype	Wildtype				
80-12-224-2372	S83L_D83G	S80I				
ERS369505	Wildtype	Wildtype	Present	Present	Absent	Present
10-2529	Wildtype	Wildtype	Present	Absent	Absent	Absent
ERS180080	S83L_D87G	S80I				
sh0343_4464347	Wildtype	Wildtype				
11-278	Wildtype	Wildtype	Present	Absent	Absent	Absent
695/13	S83L_D87G.	S80I				
Sh08-0350						
SF1677	ND	ND	Present	Present	Absent	Absent
10-1755	Wildtype	Wildtype	Present	Absent	Absent	Absent
ERS180116	Wildtype	Wildtype	Present	Absent	Absent	Absent
ERS180096	Wildtype	Wildtype	Present	Absent	Absent	Absent
365/13	Wildtype	Wildtype	Present	Present	Present	Absent
ERS180103	Wildtype	Wildtype	Present	Absent	Absent	Absent
ERS369543	Wildtype	Wildtype	Present	Present	Absent	Absent
K-9292	S83L	Wildtype				
ERS180148	Wildtype	Wildtype	Present	Absent	Present	Absent
80-12-240-4928	ND	ND				
12-1488	Wildtype	Wildtype				
ERS180123	Wildtype	Wildtype	Present	Absent	Absent	Absent
ERS180065	Wildtype	Wildtype	Present	Absent	Absent	Absent
ERS369524	Wildtype	Wildtype	Present	Present	Absent	Present
AUSMDU00003037_S2	ND	ND	Present	Present	Absent	Absent
ERS369496	Wildtype	Wildtype	Present	Present	Present	Absent
415/13	Wildtype	Wildtype	Present	Present	Present	Absent
461/13	Wildtype	ND	Present	Present	Present	Absent
ERS180105	Wildtype	Wildtype	Present	Absent	Absent	Absent
ERS180136	S83L_D87G	S80I				
ERS180130	Wildtype	Wildtype	Present	Absent	Absent	Absent
580/13	ND	Wildtype	Present	Present	Absent	Absent
K-9175	D87G	Wildtype				
ERS180093	Wildtype	Wildtype	Present	Absent	Absent	Absent
ERS087994	Wildtype	Wildtype				
512/13	ND	ND				
K-9447	D87G	Wildtype				
MS0105_2882369	Wildtype	Wildtype				
10-1391	Wildtype	Wildtype	Present	Absent	Absent	Absent
505/13	ND	Wildtype	Present	Present	Present	Absent
348/13	Wildtype	Wildtype				
115/13	Wildtype	Wildtype				
ERS369453	Wildtype	Wildtype				
12-10736	Wildtype	Wildtype				
ERS180141	Wildtype	Wildtype	Present	Present	Present	Absent
ERS369476	Wildtype	Wildtype				
ERS369515	Wildtype	Wildtype	Present	Present	Absent	Present
AUSMDU00003038_S5	ND	ND	Present	Present	Absent	Absent
12-321	Wildtype	Wildtype	Present	Absent	Absent	Absent
ERS369494	Wildtype	Wildtype	Present	Present	Present	Absent
ERS180142	Wildtype	Wildtype	Present	Absent	Absent	Absent
sh0342_4464346	Wildtype	Wildtype				
MS0078_2882359	Wildtype	Wildtype				
K-9444	D87G	Wildtype				
11-6611	Wildtype	Wildtype	Present	Absent	Absent	Absent
ERS180115	Wildtype	Wildtype	Present	Absent	Present	Absent
ERS369513	Wildtype	Wildtype	Present	Present	Absent	Absent
ERS369547	Wildtype	Wildtype	Present	Present	Absent	Absent
ERS369527	Wildtype	Wildtype	Present	Present	Absent	Absent
EG0006_2874369	Wildtype	Wildtype				
ERS180110	Wildtype	Wildtype	Present	Present	Present	Absent
ERS180064	Wildtype	Wildtype				
ERS180109	S83L_D87G	S80I				
ERS369536	Wildtype	Wildtype	Present	Present	Absent	Absent
ERS180090	Wildtype	Wildtype	Present	Absent	Absent	Absent
ERS369458	Wildtype	Wildtype	Present	Absent	Absent	Absent
K-9413	D87G	Wildtype				
ERS369463	Wildtype	Wildtype				
ERS180067	Wildtype	Wildtype	Present	Absent	Absent	Absent
ERS180081	S83L_D87G	S80I				
ERS369511	Wildtype	Wildtype	Present	Present	Absent	Absent
ERS180118	Wildtype	Wildtype	Present	Absent	Absent	Absent
AUSMDU00003041_S14	ND	ND	Present	Present	Absent	Absent
ERS180126	S83L_D87G.	S80I				
ERS369531	Wildtype	Wildtype	Present	Present	Present	Absent
147/13	Wildtype	Wildtype	Present	Present	Absent	Present
ERS180087	Wildtype	Wildtype				
EG0257_2874375	S83L	Wildtype				
K-62	Wildtype	Wildtype	Present	Absent	Absent	Absent
ERS180102	Wildtype	Wildtype				
ERS180082	Wildtype	Wildtype				
ERS180060	S83L_D87G	S80I				
ERS180149	Wildtype	Wildtype				
ERS180099	Wildtype	Wildtype	Present	Absent	Present	Absent
ERS372313	Wildtype	Wildtype				
AUSMDU00003050_S18	ND	ND	Present	Present	Absent	Absent
ERS369508	Wildtype	Wildtype	Present	Absent	Absent	Absent
AUSMDU00003042_S17	ND	ND	Present	Present	Absent	Absent
ERS180089	Wildtype	Wildtype	Present	Absent	Absent	Absent
457/13	Wildtype	Wildtype	Present	Present	Absent	Absent
ERS180068	S83L_D87G	S80I				
ERS180129	Wildtype	Wildtype				
307/13	Wildtype	Wildtype	Present	Present	Absent	Absent
AUSMDU00003040_S11	ND	ND	Present	Present	Absent	Absent
AUSMDU00003051_S21	ND	ND	Present	Present	Absent	Absent
ERS180137	Wildtype	Wildtype	Present	Absent	Present	Absent
12-2962	Wildtype	Wildtype	Present	Absent	Absent	Absent

AUSMDU00003029_S1	ND	ND					
ERS180106	Wildtype	Wildtype	Present	Absent	Absent	Absent	
sh0341_4464345	Wildtype	Wildtype					
503/13	ND	ND	Present	Present	Absent	Absent	
ERS369541	Wildtype	Wildtype					
AUSMDU00003048_S12	ND	ND	Present	Present	Absent	Absent	Absent
ERS369468	Wildtype	Wildtype	Present	Absent	Absent	Absent	Absent
12-070	Wildtype	Wildtype	Present	Absent	Absent	Absent	Absent
ERS369529	Wildtype	Wildtype	Present	Present	Absent	Absent	Absent
AUSMDU00003033_S13	ND	ND	Present	Present	Absent	Absent	Absent
ERS180066	Wildtype	Wildtype	Present	Absent	Absent	Absent	Absent
ERS180078	Wildtype	Wildtype	Present	Absent	Absent	Absent	Absent
E0198_2874374	S83L	Wildtype					
ERS180083	Wildtype	Wildtype	Present	Absent	Present	Absent	
ERS031795	Wildtype	Wildtype					
ERS180114	Wildtype	Wildtype	Present	Absent	Absent	Absent	Absent
ERS180121	Wildtype	Wildtype	Present	Absent	Absent	Absent	Absent
AUSMDU00003045_S3	ND	ND	Present	Present	Absent	Absent	Absent
12-2560	Wildtype	Wildtype	Present	Absent	Absent	Absent	Absent
K-9522	D87G	Wildtype					
ERS369506	Wildtype	Wildtype	Present	Present	Absent	Present	Present
293/13	Wildtype	Wildtype	Present	Present	Absent	Absent	Absent
369/13B	Wildtype	Wildtype	Present	Present	Absent	Absent	Absent
ERS369518	Wildtype	Wildtype	Present	Present	Present	Absent	Absent
13-1398							
ERS369525	Wildtype	Wildtype	Present	Present	Absent	Absent	Absent
369/13A	Wildtype	Wildtype	Present	Present	Absent	Absent	Present
K-734	Wildtype	Wildtype					
ERS372298	Wildtype	Wildtype	Present	Absent	Present	Absent	Absent
ERS369497	Wildtype	Wildtype	Present	Absent	Absent	Absent	Absent
592/13	ND	Wildtype	Present	Present	Absent	Absent	Absent
ERS180085	Wildtype	Wildtype	Present	Absent	Absent	Absent	Absent
ERS369535	Wildtype	Wildtype	Present	Present	Present	Absent	Absent
ERS369509	Wildtype	Wildtype	Present	Present	Absent	Absent	Absent
Sh06-3638	Wildtype	Wildtype					
E0302_2874376	Wildtype	Wildtype					
ERS180124	Wildtype	Wildtype	Present	Absent	Absent	Absent	Absent
ERS180075	Wildtype	Wildtype	Present	Absent	Absent	Absent	Absent
K-9588	D87G	Wildtype					
AUSMDU00003030_S4	ND	ND	Present	Absent	Absent	Absent	Absent
AUSMDU00003035_S19	ND	ND	Present	Present	Absent	Absent	Absent
351/13	Wildtype	Wildtype	Present	Present	Present	Absent	Absent
13-6290	S83L_D87G	S80I					
K-9129	Wildtype	Wildtype					
AUSMDU00003043_S20	ND	ND	Present	Present	Absent	Absent	Absent
663/13	Wildtype	Wildtype	Present	Absent	Absent	Absent	Absent
ERS369498	Wildtype	Wildtype	Present	Absent	Absent	Absent	Absent
ERS031786	Wildtype	Wildtype					
ERS180071	S83L_D87G	S80I					
ERS369472	Wildtype	Wildtype	Present	Absent	Absent	Absent	Absent
ERS369542	Wildtype	Wildtype	Present	Present	Absent	Absent	Absent
ERS180147	Wildtype	Wildtype	Present	Absent	Absent	Absent	Absent
548/13	Wildtype	Wildtype	Present	Present	Absent	Absent	Absent
AUSMDU00003031_S7	ND	ND					
80-11-164-2370	ND	ND					
ERS088022	Wildtype	Wildtype					
K-9454	D87G	Wildtype					
458/13	Wildtype	Wildtype	Present	Present	Absent	Absent	Absent
806/13	Wildtype	Wildtype					
287/13	Wildtype	Wildtype					
ERS180133	Wildtype	Wildtype	Present	Absent	Absent	Absent	Absent
K-276	Wildtype	Wildtype					
ERS369526	S83L_D87G	S80I					
ERS180092	ND	Wildtype	Present	Absent	Absent	Absent	Absent
ERS369479	S83L_D87G	S80I					
K-9411	S83L_D87G	S80I					
DE0090_2868493	Wildtype	Wildtype					
AUSMDU00003052_S24	ND	ND	Present	Present	Absent	Absent	Absent
ERS369545	Wildtype	Wildtype	Present	Present	Absent	Absent	Absent
10-7674							
ERS180100	Wildtype	Wildtype	Present	Absent	Present	Absent	Absent
ERS369517	Wildtype	Wildtype	Present	Present	Absent	Absent	Absent
11-6955	Wildtype	Wildtype					
76/13	Wildtype	Wildtype	Present	Present	Absent	Absent	Absent
ERS088047	Wildtype	Wildtype					
AUSMDU00003036_S22	ND	ND	Present	Present	Absent	Absent	Absent
K-10248	D87G	Wildtype					
sh0315_4464319	Wildtype	Wildtype					
80-11-358-2172	S83L_D83G	S80I					
SF0743	ND	ND	Present	Absent	Absent	Absent	Absent
Sh05-8094	Wildtype	Wildtype					
ERS369514	Wildtype	Wildtype	Present	Present	Absent	Absent	Absent
ERS180135	Wildtype	Wildtype	Present	Absent	Absent	Absent	Absent
ERS372309	Wildtype	Wildtype	Present	Absent	Absent	Absent	Absent
11-2240	Wildtype	Wildtype					
K-10368	D87G	Wildtype					
AUSMDU00003044_S23	ND	ND	Present	Present	Absent	Absent	Absent
10-1295	Wildtype	Wildtype					
80-13-058-4645	ND	ND	Present	Present	Absent	Absent	Absent
ERS180117	Wildtype	Wildtype	Present	Absent	Present	Present	Absent
ERS180127	Wildtype	Wildtype	Present	Absent	Present	Present	Absent
ERS369503	Wildtype	Wildtype	Present	Absent	Absent	Absent	Absent
136/13	ND	ND	Present	Present	Present	Present	Absent
ERS369495	Wildtype	Wildtype	Present	Present	Absent	Absent	Absent
80-12-110-4516	S83L_D83G	S80I					
80-12-011-3999	S83L_D83G	S80I					
Sh08-3483	Wildtype	Wildtype	Present	Absent	Present	Absent	Absent
ERS180056	Wildtype	Wildtype	Present	Absent	Absent	Absent	Absent
ERS369477	Wildtype	Wildtype					
ERS369544	Wildtype	Wildtype	Present	Present	Absent	Absent	Absent
443/13	Wildtype	Wildtype	Present	Present	Absent	Absent	Present
12-6716	S83L_D87G	S80I					
ERS180097	Wildtype	Wildtype					
11-820	S83L_D87G	S80I					
10-7290	Wildtype	Wildtype	Present	Absent	Absent	Absent	Absent
ERS369504	Wildtype	Wildtype	Present	Present	Absent	Present	Present
ERS369538	Wildtype	Wildtype	Present	Present	Absent	Absent	Absent
Sh07-4848	Wildtype	Wildtype					
ERS369537	Wildtype	Wildtype	Present	Present	Absent	Absent	Absent
K-9339	D87G	Wildtype					
ERS369510	S83L_D87G	S80I					
84/13	ND	Wildtype	Present	Present	Absent	Absent	Absent
ERS180120	Wildtype	Wildtype	Present	Absent	Absent	Absent	Absent
ERS369530	Wildtype	Wildtype	Present	Present	Absent	Present	Present
Sh05-0787	Wildtype	Wildtype					
AUSMDU00003047_S9	ND	ND	Present	Present	Absent	Absent	Absent
ERS180098	Wildtype	Wildtype	Present	Absent	Present	Present	Absent
SF1102	ND	ND	Present	Absent	Absent	Absent	Absent
ERS369528	Wildtype	Wildtype	Present	Present	Absent	Absent	Absent
407/13	Wildtype	Wildtype	Present	Present	Absent	Absent	Absent

K-9375	D87G	Wildtype					
ERS180073	S83L.D87G	S80I					
ERS180113	S83L.D87G	S80I					
106/13	ND	Wildtype	Present	Present	Absent	Absent	
ERS088049	Wildtype	Wildtype					
ERS180057	Wildtype	Wildtype					
12-1897	Wildtype	Wildtype	Present	Absent	Absent	Absent	
Sh09-4409	Wildtype	Wildtype					
K-9278	D87G	Wildtype					
ERS180104	Wildtype	Wildtype					
AUSMDU00003032_S10	ND	ND	Present	Present	Absent	Absent	
627/13	Wildtype	Wildtype	Present	Absent	Present	Absent	
368/13	Wildtype	Wildtype	Present	Absent	Present	Absent	
ERS369460	Wildtype	Wildtype	Present	Absent	Present	Absent	
AUSMDU00003034_S16	ND	ND	Present	Present	Absent	Absent	
ERS180061	Wildtype	Wildtype	Present	Absent	Absent	Absent	
ERS180077	Wildtype	Wildtype	Present	Absent	Present	Absent	
388/13	Wildtype	Wildtype	Present	Present	Present	Absent	
K-10343	D87G	Wildtype					
ERS087995	Wildtype	Wildtype					
ERS180145	Wildtype	Wildtype	Present	Absent	Absent	Absent	
ERS369475	Wildtype	Wildtype	Present	Absent	Absent	Absent	
5/63							
ERS369493	Wildtype	Wildtype	Present	Present	Present	Absent	
ERS180112	Wildtype	Wildtype					
ERS369521	Wildtype	Wildtype	Present	Present	Absent	Absent	
ERS369462	Wildtype	Wildtype	Present	Absent	Present	Absent	
Sh07-4943	Wildtype	Wildtype					
ERS180076	Wildtype	Wildtype	Present	Absent	Present	Absent	
179/13	Wildtype	Wildtype	Present	Present	Absent	Absent	
217/13	Wildtype	Wildtype	Present	Present	Absent	Absent	
ERS180150	Wildtype	Wildtype	Present	Absent	Present	Absent	
ERS031772	Wildtype	Wildtype					
ERS180131	Wildtype	Wildtype	Present	Absent	Absent	Absent	
11-632	Wildtype	Wildtype	Present	Absent	Absent	Absent	
ERS180107	Wildtype	Wildtype	Present	Absent	Absent	Absent	
ERS369470	Wildtype	Wildtype	Present	Absent	Absent	Absent	
13-3909	Wildtype	Wildtype	Present	Present	Absent	Absent	
ERS369519	Wildtype	Wildtype	Present	Present	Absent	Absent	
ERS369512	Wildtype	Wildtype					
10-2493	Wildtype	Wildtype	Present	Absent	Present	Absent	
ERS180070	Wildtype	Wildtype	Present	Absent	Present	Absent	
80-12-339-4617	S83L	ND					
ERS369539	Wildtype	Wildtype	Present	Present	Absent	Present	
ERS088050	Wildtype	Wildtype					
ERS180125	Wildtype	Wildtype					
ERS180146	Wildtype	Wildtype	Present	Absent	Present	Absent	
K-9169	D87G	Wildtype					
ERS180101	Wildtype	Wildtype	Present	Absent	Absent	Absent	
ERS180079	Wildtype	Wildtype	Present	Absent	Absent	Absent	
AUSMDU00003049_S15	ND	ND	Present	Present	Absent	Absent	
AUSMDU00003046_S6	ND	ND	Present	Present	Absent	Absent	
ERS369499	Wildtype	Wildtype					
285/13	Wildtype	Wildtype	Present	Present	Absent	Present	
sh0313_4464317	ND	Wildtype					
ERS180091	S83L.D87G	S80I					
ERS369461	Wildtype	Wildtype	Present	Absent	Absent	Absent	
ERS369516	Wildtype	Wildtype	Present	Present	Present	Absent	
198/13	Wildtype	Wildtype	Present	Present	Absent	Absent	
ERS369457	Wildtype	Wildtype					
ERS180095	Wildtype	Wildtype	Present	Absent	Absent	Absent	
ERS180122	Wildtype	Wildtype	Present	Absent	Absent	Absent	
414/13	Wildtype	Wildtype	Present	Present	Absent	Absent	
ERS180084	D87N	Wildtype					
ERS180143	Wildtype	Wildtype	Present	Absent	Absent	Absent	
ERS369520	Wildtype	Wildtype	Present	Present	Absent	Present	
ERS180134	Wildtype	Wildtype	Present	Absent	Absent	Absent	
ERS180108	S83L.D87G	S80I					
K-9256	D87G	Wildtype					
ERS369500	Wildtype	Wildtype	Present	Absent	Absent	Absent	
ERS180132	Wildtype	Wildtype	Present	Absent	Present	Absent	
09-9039	Wildtype	Wildtype	Present	Absent	Absent	Absent	
ERS180074	Wildtype	Wildtype	Present	Absent	Absent	Absent	
ERS369523	S83L.D87G	S80I					
ERS180094	Wildtype	Wildtype	Present	Absent	Present	Absent	
201/13	ND	ND					
ERS180055	Wildtype	Wildtype	Present	Absent	Present	Absent	
ERS180069	S83L.D87G	S80I					
ERS180144	Wildtype	Wildtype	Present	Absent	Absent	Absent	
ERS180072	Wildtype	Wildtype	Present	Absent	Absent	Absent	
10262_2868448	S83L	Wildtype					
ERS180140	Wildtype	Wildtype	Present	Absent	Absent	Absent	
ERS031757	Wildtype	Wildtype					
ERS180088	Wildtype	Wildtype	Present	Absent	Absent	Absent	
ERS369502	S83L.D87G	S80I					
05-11-032-2299	ND	ND					
237/13	ND	ND	Present	Present	Present	Absent	
SF7955	ND	ND	Present	Present	Present	Absent	
290/13	ND	Wildtype	Present	Present	Present	Absent	
447/13	ND	Wildtype	Present	Absent	Present	Absent	
204/13	Wildtype	Wildtype	Present	Present	Absent	Absent	
SF7787	ND	ND	Present	Present	Absent	Absent	
ERS180119	Wildtype	Wildtype	Present	Absent	Absent	Absent	

Sample name	<i>mphA</i>	<i>ermB</i>	<i>blaTEM</i>	<i>mdtE</i>	<i>aph6id (strB)</i>	<i>aph33ib (strA)</i>	<i>sul2</i>	<i>dfra14</i>
ERS180138	Absent	Absent	Absent	Absent	Absent	Absent	Absent	Absent
228/13	Present	Present	Present	Present	Absent	Absent	Absent	Absent
ERS369546	Present	Present	Present	Present	Absent	Absent	Absent	Absent
ERS369533	Present	Present	Present	Present	Absent	Absent	Absent	Absent
ERS369501	Present	Present	Present	Present	Absent	Absent	Absent	Absent
ERS369492	Absent	Absent	Absent	Present	Absent	Absent	Present	Absent
ERS180111	Absent	Absent	Absent	Absent	Absent	Absent	Absent	Absent
13-6754	Present	Present	Present	Present	Absent	Absent	Absent	Absent
ERS369507	Present	Present	Present	Present	Absent	Absent	Absent	Absent
ERS180128	Absent	Absent	Absent	Absent	Absent	Absent	Absent	Absent
ERS369522	Present	Present	Present	Present	Absent	Absent	Absent	Absent
AUSMDU00003039_S8	Present	Present	Present	Present	Absent	Absent	Absent	Absent
ERS088023	Absent	Absent	Absent	Present	Present	Present	Present	Present
11-719	Absent	Absent	Present	Present	Present	Absent	Present	Absent
sh0368_4464372	Absent	Absent	Absent	Present	Present	Present	Present	Present
ERS180059	Absent	Absent	Absent	Absent	Absent	Absent	Absent	Absent
ERS180086	Absent	Absent	Absent	Absent	Absent	Absent	Absent	Absent
ERS180063	Absent	Absent	Absent	Absent	Absent	Absent	Absent	Absent
ERS180139	Absent	Absent	Absent	Absent	Absent	Absent	Absent	Absent
ERS180058	Absent	Absent	Absent	Absent	Absent	Absent	Absent	Absent
ERS369534	Present	Present	Present	Present	Absent	Absent	Absent	Absent
214/13	Present	Present	Present	Present	Absent	Absent	Absent	Absent
ERS088048	Absent	Absent	Absent	Present	Present	Present	Present	Present
80-12-224-2372	Absent	Absent	Absent	Present	Absent	Absent	Present	Absent
ERS369505	Present	Present	Present	Present	Absent	Absent	Absent	Absent
10-2529	Absent	Absent	Absent	Present	Absent	Absent	Absent	Absent
ERS180080	Absent	Absent	Present	Absent	Absent	Absent	Absent	Absent
sh0343_4464347	Absent	Absent	Absent	Present	Present	Present	Present	Present
11-278	Absent	Absent	Absent	Present	Absent	Absent	Absent	Absent
695/13	Absent	Absent	Absent	Absent	Absent	Absent	Present	Absent
Sh08-0350								
SF1677	Present	Present	Present	Present	Absent	Absent	Absent	Absent
10-1755	Absent	Absent	Absent	Present	Absent	Absent	Absent	Absent
ERS180116	Absent	Absent	Absent	Absent	Absent	Absent	Absent	Absent
ERS180096	Absent	Absent	Absent	Absent	Present	Present	Absent	Present
365/13	Present	Present	Present	Present	Present	Present	Present	Present
ERS180103	Absent	Absent	Absent	Absent	Absent	Absent	Absent	Absent
ERS369543	Present	Present	Present	Present	Absent	Absent	Absent	Absent
K-9292	Absent	Absent	Absent	Absent	Absent	Absent	Present	Absent
ERS180148	Absent	Absent	Absent	Absent	Present	Present	Present	Present
80-12-240-4928	Absent	Absent	Absent	Present	Absent	Absent	Absent	Absent
12-1488	Absent	Absent	Absent	Present	Absent	Absent	Absent	Absent
ERS180123	Absent	Absent	Absent	Absent	Absent	Absent	Absent	Absent
ERS180065	Absent	Absent	Absent	Absent	Absent	Absent	Absent	Absent
ERS369524	Present	Present	Present	Present	Absent	Absent	Absent	Absent
AUSMDU00003037_S2	Present	Present	Present	Present	Absent	Absent	Absent	Absent
ERS369496	Present	Present	Present	Present	Present	Present	Present	Present
415/13	Present	Present	Present	Present	Present	Present	Present	Present
461/13	Present	Present	Present	Present	Present	Present	Present	Present
ERS180105	Absent	Absent	Absent	Absent	Absent	Absent	Absent	Absent
ERS180136	Absent	Absent	Absent	Absent	Absent	Absent	Absent	Absent
ERS180130	Absent	Absent	Absent	Absent	Absent	Absent	Absent	Absent
580/13	Present	Present	Present	Present	Absent	Absent	Absent	Absent
K-9175	Absent	Absent	Absent	Absent	Present	Present	Present	Absent
ERS180093	Absent	Absent	Absent	Absent	Absent	Absent	Absent	Absent
ERS087994	Absent	Absent	Absent	Present	Present	Present	Present	Present
512/13	Absent	Absent	Absent	Present	Present	Present	Present	Present
K-9447	Absent	Absent	Absent	Absent	Present	Present	Present	Absent
MS0105_2882369	Absent	Absent	Absent	Absent	Present	Present	Present	Present
10-1391	Absent	Absent	Absent	Present	Absent	Absent	Absent	Absent
505/13	Present	Present	Present	Present	Present	Present	Present	Present
348/13	Absent	Absent	Absent	Present	Present	Present	Present	Present
115/13	Absent	Absent	Absent	Present	Absent	Absent	Absent	Absent
ERS369453	Absent	Absent	Absent	Present	Absent	Absent	Present	Absent
12-10736	Absent	Absent	Absent	Present	Absent	Absent	Absent	Absent
ERS180141	Present	Present	Present	Absent	Present	Present	Present	Present
ERS369476	Absent	Absent	Absent	Present	Absent	Absent	Absent	Absent
ERS369515	Present	Present	Present	Present	Absent	Absent	Absent	Absent
AUSMDU00003038_S5	Present	Present	Present	Present	Absent	Absent	Absent	Absent
12-321	Absent	Absent	Absent	Present	Absent	Absent	Absent	Absent
ERS369494	Present	Present	Present	Present	Present	Present	Present	Present
ERS180142	Absent	Absent	Absent	Absent	Absent	Absent	Absent	Absent
sh0342_4464346	Absent	Absent	Absent	Present	Present	Present	Present	Present
MS0078_2882359	Absent	Absent	Present	Present	Present	Present	Present	Present
K-9444	Absent	Absent	Absent	Present	Present	Present	Present	Absent
11-6611	Absent	Absent	Absent	Present	Absent	Absent	Absent	Absent
ERS180115	Absent	Absent	Absent	Present	Present	Present	Present	Present
ERS369513	Present	Present	Present	Present	Absent	Absent	Absent	Absent
ERS369547	Present	Present	Present	Present	Absent	Absent	Absent	Absent
ERS369527	Present	Present	Present	Present	Absent	Absent	Absent	Absent
EG0006_2874369	Absent	Absent	Absent	Absent	Absent	Absent	Present	Absent
ERS180110	Present	Present	Present	Present	Present	Present	Present	Present
ERS180064	Absent	Absent	Present	Absent	Present	Present	Present	Present
ERS180109	Absent	Absent	Absent	Absent	Absent	Absent	Present	Absent
ERS369536	Present	Present	Present	Present	Absent	Absent	Absent	Absent
ERS180090	Absent	Absent	Absent	Absent	Absent	Absent	Absent	Absent
ERS369458	Absent	Absent	Absent	Present	Absent	Absent	Absent	Absent
K-9413	Absent	Absent	Absent	Present	Present	Present	Present	Absent
ERS369463	Absent	Absent	Absent	Present	Absent	Absent	Absent	Absent
ERS180067	Absent	Absent	Absent	Absent	Absent	Absent	Absent	Absent
ERS180081	Absent	Absent	Absent	Absent	Absent	Absent	Present	Absent
ERS369511	Present	Present	Present	Present	Absent	Absent	Absent	Absent
ERS180118	Absent	Absent	Absent	Absent	Absent	Absent	Absent	Absent
AUSMDU00003041_S14	Present	Present	Present	Present	Absent	Absent	Absent	Absent
ERS180126	Present	Absent	Absent	Absent	Absent	Absent	Present	Absent
ERS369531	Present	Present	Present	Present	Present	Present	Present	Present
147/13	Present	Present	Present	Present	Absent	Absent	Absent	Absent
ERS180087	Absent	Absent	Absent	Absent	Absent	Absent	Absent	Absent
EG0257_2874375	Absent	Absent	Present	Absent	Present	Present	Present	Absent
K-62	Absent	Absent	Absent	Absent	Absent	Absent	Present	Absent
ERS180102	Absent	Absent	Absent	Absent	Absent	Absent	Absent	Absent
ERS180082	Absent	Absent	Absent	Absent	Absent	Absent	Absent	Absent
ERS180060	Absent	Absent	Absent	Absent	Absent	Absent	Present	Absent
ERS180149	Absent	Absent	Absent	Absent	Present	Present	Present	Present
ERS180099	Absent	Absent	Absent	Absent	Present	Present	Present	Present
ERS372313	Absent	Absent	Absent	Present	Absent	Absent	Absent	Absent
AUSMDU00003050_S18	Present	Present	Present	Present	Absent	Absent	Absent	Absent
ERS369508	Absent	Absent	Absent	Present	Absent	Absent	Absent	Absent
AUSMDU00003042_S17	Present	Present	Present	Present	Absent	Absent	Absent	Absent
ERS180089	Absent	Absent	Absent	Absent	Absent	Absent	Absent	Absent
457/13	Present	Present	Present	Present	Absent	Absent	Absent	Absent
ERS180068	Absent	Absent	Absent	Absent	Absent	Absent	Present	Absent
ERS180129	Absent	Absent	Absent	Absent	Present	Present	Present	Present
307/13	Present	Present	Present	Present	Absent	Absent	Absent	Absent
AUSMDU00003040_S11	Present	Present	Present	Present	Absent	Absent	Absent	Absent
AUSMDU00003051_S21	Present	Present	Present	Present	Absent	Absent	Absent	Absent
ERS180137	Absent	Absent	Absent	Absent	Present	Present	Present	Present
12-2962	Absent	Absent	Absent	Present	Absent	Absent	Absent	Absent

AUSMDU00003029_S1	Absent	Absent	Absent	Present	Absent	Absent	Absent	Absent
ERS180106	Absent	Absent	Absent	Absent	Absent	Absent	Absent	Absent
sh0341_4464345	Absent	Absent	Absent	Present	Present	Present	Present	Present
503/13	Present	Present	Present	Present	Present	Present	Present	Present
ERS369541	Absent	Absent	Absent	Present	Absent	Absent	Absent	Absent
AUSMDU00003048_S12	Present	Present	Present	Present	Absent	Absent	Absent	Absent
ERS369468	Absent	Absent	Absent	Present	Absent	Absent	Absent	Absent
12-070	Absent	Absent	Absent	Present	Absent	Absent	Absent	Absent
ERS369529	Present	Present	Present	Present	Absent	Absent	Absent	Absent
AUSMDU00003033_S13	Present	Present	Present	Present	Absent	Absent	Absent	Absent
ERS180066	Absent	Absent	Absent	Absent	Absent	Absent	Absent	Absent
ERS180078	Absent	Absent	Absent	Absent	Absent	Absent	Absent	Absent
E00198_2874374	Absent	Absent	Present	Absent	Present	Present	Present	Present
ERS180083	Present	Absent	Absent	Absent	Present	Present	Present	Present
ERS031795	Absent	Absent	Present	Absent	Present	Present	Present	Present
ERS180114	Absent	Absent	Absent	Absent	Absent	Absent	Absent	Absent
ERS180121	Absent	Absent	Absent	Absent	Absent	Absent	Absent	Absent
AUSMDU00003045_S3	Present	Present	Present	Present	Absent	Absent	Absent	Absent
12-2560	Absent	Absent	Present	Present	Absent	Absent	Absent	Absent
K-9522	Absent	Absent	Absent	Present	Present	Present	Present	Absent
ERS369506	Present	Present	Present	Present	Absent	Absent	Absent	Absent
293/13	Present	Present	Present	Present	Absent	Absent	Absent	Absent
369/13B	Present	Present	Present	Present	Absent	Absent	Absent	Absent
ERS369518	Present	Present	Present	Present	Present	Present	Present	Present
13-1398								
ERS369525	Present	Present	Present	Present	Absent	Absent	Absent	Absent
369/13A	Present	Present	Present	Present	Absent	Absent	Absent	Absent
K-734	Absent	Absent	Absent	Absent	Absent	Absent	Present	Absent
ERS372298	Absent	Absent	Present	Present	Present	Present	Present	Absent
ERS369497	Absent	Absent	Absent	Present	Absent	Absent	Absent	Absent
592/13	Present	Absent	Present	Present	Absent	Absent	Absent	Absent
ERS180085	Absent	Absent	Absent	Absent	Absent	Absent	Absent	Absent
ERS369535	Present	Present	Present	Present	Present	Present	Present	Present
ERS369509	Present	Present	Present	Present	Absent	Absent	Absent	Absent
Sh06-3638	Absent	Absent	Absent	Present	Absent	Absent	Absent	Absent
E00302_2874376	Absent	Absent	Absent	Present	Absent	Absent	Present	Absent
ERS180124	Absent	Absent	Absent	Absent	Absent	Absent	Absent	Absent
ERS180075	Absent	Absent	Absent	Absent	Absent	Absent	Absent	Absent
K-9588	Absent	Absent	Absent	Present	Absent	Absent	Absent	Absent
AUSMDU00003030_S4	Absent	Absent	Absent	Present	Absent	Absent	Absent	Absent
AUSMDU00003035_S19	Present	Present	Present	Present	Absent	Absent	Absent	Absent
351/13	Present	Present	Present	Present	Present	Present	Present	Present
13-6290	Absent	Absent	Absent	Present	Absent	Absent	Present	Absent
K-9129	Absent	Absent	Absent	Present	Absent	Absent	Absent	Absent
AUSMDU00003043_S20	Present	Present	Present	Present	Absent	Absent	Absent	Absent
663/13	Absent	Absent	Absent	Present	Absent	Absent	Absent	Absent
ERS369498	Absent	Absent	Absent	Present	Absent	Absent	Absent	Absent
ERS031786	Absent	Absent	Absent	Absent	Absent	Absent	Present	Absent
ERS180071	Absent	Absent	Absent	Absent	Absent	Absent	Absent	Absent
ERS369472	Absent	Absent	Absent	Present	Absent	Absent	Absent	Absent
ERS369542	Present	Present	Present	Present	Absent	Absent	Absent	Absent
ERS180147	Absent	Absent	Absent	Absent	Absent	Absent	Absent	Absent
548/13	Present	Present	Present	Present	Absent	Absent	Present	Present
AUSMDU00003031_S7	Absent	Absent	Absent	Present	Absent	Absent	Absent	Absent
80-11-164-2370	Absent	Absent	Absent	Present	Present	Present	Present	Present
ERS088022	Absent	Absent	Absent	Present	Present	Present	Present	Present
K-9454	Absent	Absent	Absent	Absent	Absent	Absent	Absent	Absent
458/13	Present	Present	Present	Present	Absent	Absent	Absent	Absent
806/13	Absent	Absent	Absent	Present	Present	Present	Present	Present
287/13	Absent	Absent	Absent	Present	Absent	Absent	Absent	Absent
ERS180133	Absent	Absent	Absent	Absent	Absent	Absent	Absent	Absent
K-276	Absent	Absent	Absent	Absent	Absent	Absent	Present	Absent
ERS369526	Absent	Absent	Absent	Present	Absent	Absent	Present	Absent
ERS180092	Absent	Absent	Absent	Absent	Absent	Absent	Absent	Absent
ERS369479	Absent	Absent	Absent	Present	Absent	Absent	Present	Absent
K-9411	Absent	Absent	Absent	Present	Absent	Absent	Present	Absent
DE0090_2868493	Absent	Absent	Absent	Absent	Absent	Absent	Present	Absent
AUSMDU00003052_S24	Present	Present	Present	Present	Absent	Absent	Absent	Absent
ERS369545	Present	Present	Present	Present	Absent	Absent	Absent	Absent
10-7674								
ERS180100	Absent	Absent	Absent	Absent	Present	Present	Present	Present
ERS369517	Present	Present	Present	Present	Present	Present	Present	Absent
11-6955	Absent	Absent	Absent	Present	Present	Present	Present	Absent
76/13	Present	Present	Present	Present	Absent	Absent	Absent	Absent
ERS088047	Absent	Absent	Absent	Present	Present	Present	Present	Present
AUSMDU00003036_S22	Present	Present	Present	Present	Absent	Absent	Absent	Absent
K-10248	Absent	Absent	Absent	Present	Absent	Absent	Absent	Absent
sh0315_4464319	Absent	Absent	Absent	Present	Present	Present	Present	Present
80-11-358-2172	Absent	Absent	Absent	Present	Present	Present	Present	Present
SF0743	Absent	Absent	Absent	Present	Absent	Absent	Absent	Absent
Sh05-8094	Absent	Absent	Absent	Present	Absent	Absent	Absent	Absent
ERS369514	Present	Present	Present	Present	Absent	Absent	Absent	Absent
ERS180135	Absent	Absent	Absent	Absent	Absent	Absent	Absent	Absent
ERS372309	Absent	Absent	Absent	Present	Present	Present	Present	Present
11-2240	Absent	Absent	Absent	Present	Present	Present	Present	Present
K-10368	Present	Absent	Present	Absent	Absent	Absent	Absent	Absent
AUSMDU00003044_S23	Present	Present	Present	Present	Absent	Absent	Absent	Absent
10-1295	Absent	Absent	Absent	Present	Present	Present	Present	Present
80-13-058-4645	Present	Absent	Present	Present	Absent	Absent	Absent	Absent
ERS180117	Absent	Absent	Absent	Absent	Present	Present	Present	Present
ERS180127	Absent	Absent	Absent	Absent	Present	Present	Present	Present
ERS369503	Absent	Absent	Present	Present	Absent	Absent	Absent	Absent
136/13	Present	Absent	Present	Present	Present	Present	Present	Present
ERS369495	Present	Present	Present	Present	Absent	Absent	Absent	Absent
80-12-110-4516	Absent	Absent	Absent	Present	Absent	Absent	Present	Absent
80-12-011-3999	Absent	Absent	Absent	Present	Absent	Absent	Present	Absent
Sh08-3483	Absent	Absent	Absent	Absent	Present	Present	Present	Present
ERS180056	Absent	Absent	Absent	Absent	Absent	Absent	Absent	Absent
ERS369477	Absent	Absent	Absent	Present	Absent	Absent	Absent	Absent
ERS369544	Present	Present	Present	Present	Absent	Absent	Absent	Absent
443/13	Present	Present	Present	Present	Absent	Absent	Absent	Absent
12-6716	Absent	Absent	Absent	Present	Absent	Absent	Absent	Absent
ERS180097	Absent	Absent	Absent	Absent	Present	Present	Present	Present
11-820	Absent	Absent	Absent	Present	Absent	Absent	Absent	Absent
10-7290	Absent	Absent	Absent	Present	Absent	Absent	Absent	Absent
ERS369504	Present	Present	Present	Present	Absent	Absent	Absent	Absent
ERS369538	Present	Present	Present	Present	Absent	Absent	Absent	Absent
Sh07-4848	Absent	Absent	Absent	Absent	Present	Present	Present	Present
ERS369537	Present	Present	Present	Present	Absent	Absent	Absent	Absent
K-9339	Absent	Absent	Absent	Absent	Absent	Absent	Absent	Absent
ERS369510	Absent	Absent	Absent	Absent	Absent	Absent	Present	Absent
84/13	Present	Present	Present	Present	Absent	Absent	Absent	Absent
ERS180120	Absent	Absent	Absent	Absent	Absent	Absent	Absent	Absent
ERS369530	Present	Present	Present	Present	Absent	Absent	Absent	Absent
Sh05-0787	Absent	Absent	Absent	Absent	Absent	Absent	Absent	Absent
AUSMDU00003047_S9	Present	Present	Present	Present	Absent	Absent	Absent	Absent
ERS180098	Absent	Absent	Absent	Present	Present	Present	Present	Present
SF1102	Absent	Absent	Present	Present	Absent	Absent	Absent	Absent
ERS369528	Present	Present	Present	Present	Absent	Absent	Absent	Absent
407/13	Present	Present	Present	Present	Absent	Absent	Absent	Absent

Sample name	<i>tetB</i>	<i>tetC</i>	<i>tolC</i>	<i>mdtK</i>	<i>aadA5</i>
ERS180138	Present	Absent	Present	Present	Absent
228/13	Present	Absent	Present	Present	Present
ERS369546	Present	Absent	Present	Present	Absent
ERS369533	Present	Absent	Present	Present	Absent
ERS369501	Present	Absent	Present	Present	Absent
ERS369492	Present	Absent	Present	Present	Absent
ERS180111	Present	Absent	Present	Present	Absent
13-6754	Present	Absent	Present	Present	Absent
ERS369507	Present	Absent	Present	Present	Absent
ERS180128	Present	Absent	Present	Present	Absent
ERS369522	Present	Absent	Present	Present	Absent
JSMDU00003039_1	Present	Absent	Present	Present	Absent
ERS088023	Absent	Absent	Present	Present	Absent
11-719	Present	Absent	Present	Present	Absent
sh0368_4464372	Absent	Absent	Present	Present	Absent
ERS180059	Present	Absent	Present	Present	Absent
ERS180086	Present	Absent	Present	Present	Absent
ERS180063	Present	Absent	Present	Present	Absent
ERS180139	Present	Absent	Present	Present	Absent
ERS180058	Present	Absent	Present	Present	Absent
ERS369534	Present	Absent	Present	Present	Absent
214/13	Present	Absent	Present	Present	Present
ERS088048	Absent	Absent	Present	Present	Absent
80-12-224-2372	Present	Absent	Present	Present	Absent
ERS369505	Present	Absent	Present	Present	Present
10-2529	Present	Absent	Present	Present	Absent
ERS180080	Present	Absent	Present	Present	Present
sh0343_4464347	Absent	Absent	Present	Present	Absent
11-278	Present	Absent	Present	Present	Absent
695/13	Present	Absent	Present	Present	Absent
Sh08-0350					
SF1677	Present	Absent	Present	Present	Absent
10-1755	Present	Absent	Present	Present	Absent
ERS180116	Present	Absent	Present	Present	Absent
ERS180096	Present	Absent	Present	Present	Absent
365/13	Present	Absent	Present	Present	Absent
ERS180103	Present	Absent	Present	Present	Absent
ERS369543	Present	Absent	Present	Present	Absent
K-9292	Present	Absent	Present	Present	Absent
ERS180148	Present	Absent	Present	Present	Absent
80-12-240-4928	Present	Absent	Present	Present	Absent
12-1488	Present	Absent	Present	Present	Absent
ERS180123	Present	Absent	Present	Present	Absent
ERS180065	Present	Absent	Present	Present	Absent
ERS369524	Present	Absent	Present	Present	Present
JSMDU00003037_1	Present	Absent	Present	Present	Absent
ERS369496	Present	Absent	Present	Present	Absent
415/13	Present	Absent	Present	Present	Absent
461/13	Present	Absent	Present	Present	Absent
ERS180105	Present	Absent	Present	Present	Absent
ERS180136	Present	Absent	Present	Present	Absent
ERS180130	Present	Absent	Present	Present	Absent
580/13	Present	Absent	Present	Present	Absent
K-9175	Absent	Absent	Present	Present	Absent
ERS180093	Present	Absent	Present	Present	Absent
ERS087994	Absent	Absent	Present	Present	Absent
512/13	Present	Absent	Present	Present	Absent
K-9447	Absent	Absent	Present	Present	Absent
MS0105_2882369	Present	Absent	Present	Present	Absent
10-1391	Present	Absent	Present	Present	Absent
505/13	Present	Absent	Present	Present	Absent
348/13	Present	Absent	Present	Present	Absent
115/13	Present	Absent	Present	Present	Absent
ERS369453	Present	Absent	Present	Present	Absent
12-10736	Present	Absent	Present	Present	Absent
ERS180141	Present	Absent	Present	Present	Absent
ERS369476	Present	Absent	Present	Present	Absent
ERS369515	Present	Absent	Present	Present	Present
JSMDU00003038_1	Present	Absent	Present	Present	Absent
12-321	Present	Absent	Present	Present	Absent
ERS369494	Present	Absent	Present	Present	Absent
ERS180142	Present	Absent	Present	Present	Absent
sh0342_4464346	Absent	Absent	Present	Present	Absent
MS0078_2882359	Present	Present	Present	Present	Absent
K-9444	Absent	Absent	Present	Present	Absent
11-6611	Present	Absent	Present	Present	Absent
ERS180115	Present	Absent	Present	Present	Absent
ERS369513	Present	Absent	Present	Present	Absent
ERS369547	Present	Absent	Present	Present	Absent
ERS369527	Present	Absent	Present	Present	Absent
EG0096_2874369	Present	Absent	Present	Present	Absent
ERS180110	Present	Absent	Present	Present	Absent
ERS180064	Absent	Present	Present	Present	Absent
ERS180109	Present	Absent	Present	Present	Absent
ERS369536	Present	Absent	Present	Present	Absent
ERS180090	Present	Absent	Present	Present	Absent
ERS369458	Present	Absent	Present	Present	Absent
K-9413	Absent	Absent	Present	Present	Absent
ERS369463	Present	Absent	Present	Present	Absent
ERS180067	Present	Absent	Present	Present	Absent
ERS180081	Present	Absent	Present	Present	Absent
ERS369511	Present	Absent	Present	Present	Absent
ERS180118	Present	Absent	Present	Present	Absent
JSMDU00003041_5	Present	Absent	Present	Present	Absent
ERS180126	Present	Absent	Present	Present	Absent
ERS369531	Present	Absent	Present	Present	Absent
147/13	Present	Absent	Present	Present	Present
ERS180087	Present	Absent	Present	Present	Absent
EG0257_2874375	Present	Present	Present	Present	Absent
K-62	Present	Absent	Present	Present	Absent
ERS180102	Present	Absent	Present	Present	Absent
ERS180082	Absent	Absent	Present	Present	Absent
ERS180060	Present	Absent	Present	Present	Absent
ERS180149	Present	Absent	Present	Present	Absent
ERS180099	Present	Absent	Present	Present	Absent
ERS372313	Absent	Present	Present	Present	Absent
JSMDU00003050_5	Present	Absent	Present	Present	Absent
ERS369508	Present	Absent	Present	Present	Absent
JSMDU00003042_5	Present	Absent	Present	Present	Absent
ERS180089	Present	Absent	Present	Present	Absent
457/13	Present	Absent	Present	Present	Absent
ERS180068	Present	Absent	Present	Present	Absent
ERS180129	Present	Absent	Present	Present	Absent
307/13	Present	Absent	Present	Present	Absent
JSMDU00003040_5	Present	Absent	Present	Present	Absent
JSMDU00003051_5	Present	Absent	Present	Present	Absent
ERS180137	Present	Absent	Present	Present	Absent
12-2962	Present	Absent	Present	Present	Absent

JSMDU00003029_	Present	Absent	Present	Absent	Absent
ERS180106	Present	Absent	Present	Present	Absent
sh0341_4464345	Absent	Absent	Present	Present	Absent
503/13	Present	Absent	Present	Present	Present
ERS369541	Present	Absent	Present	Present	Absent
JSMDU00003048_5	Present	Absent	Present	Present	Absent
ERS369468	Present	Absent	Present	Present	Absent
12-070	Present	Absent	Present	Present	Absent
ERS369529	Present	Absent	Present	Present	Absent
JSMDU00003033_5	Present	Absent	Present	Present	Absent
ERS180066	Present	Absent	Present	Present	Absent
ERS180078	Present	Absent	Present	Present	Absent
EG0198_2874374	Present	Present	Present	Present	Absent
ERS180083	Present	Absent	Present	Present	Absent
ERS031795	Present	Present	Present	Present	Absent
ERS180114	Present	Absent	Present	Present	Absent
ERS180121	Present	Absent	Present	Present	Absent
JSMDU00003045_	Present	Absent	Present	Present	Absent
12-2560	Present	Absent	Present	Present	Absent
K-9522	Present	Absent	Present	Present	Absent
ERS369506	Present	Absent	Present	Present	Present
293/13	Present	Absent	Present	Present	Absent
369/13B	Present	Absent	Present	Present	Absent
ERS369518	Present	Absent	Present	Present	Absent
13-1398					
ERS369525	Present	Absent	Present	Present	Absent
369/13A	Present	Absent	Present	Present	Present
K-734	Present	Absent	Present	Present	Absent
ERS372298	Present	Absent	Present	Present	Absent
ERS369497	Present	Absent	Present	Present	Absent
592/13	Present	Absent	Present	Present	Absent
ERS180085	Present	Absent	Present	Present	Absent
ERS369535	Present	Absent	Present	Present	Absent
ERS369509	Present	Absent	Present	Present	Absent
Sh06-3638	Present	Absent	Present	Present	Absent
EG0302_2874376	Present	Absent	Present	Present	Absent
ERS180124	Present	Absent	Present	Present	Absent
ERS180075	Present	Absent	Present	Present	Absent
K-9588	Absent	Absent	Present	Present	Absent
JSMDU00003030_	Present	Absent	Present	Present	Absent
JSMDU00003035_5	Present	Absent	Present	Present	Absent
351/13	Present	Absent	Present	Present	Absent
13-6290	Present	Absent	Present	Present	Absent
K-9129	Present	Absent	Present	Present	Absent
JSMDU00003043_5	Present	Absent	Present	Present	Absent
663/13	Present	Absent	Present	Present	Absent
ERS369498	Present	Absent	Present	Present	Absent
ERS031786	Present	Absent	Present	Present	Absent
ERS180071	Present	Absent	Present	Present	Absent
ERS369472	Present	Absent	Present	Present	Absent
ERS369542	Present	Absent	Present	Present	Absent
ERS180147	Present	Absent	Present	Present	Absent
548/13	Present	Absent	Present	Present	Absent
JSMDU00003031_	Present	Absent	Present	Present	Absent
80-11-164-2370	Present	Absent	Present	Present	Absent
ERS088022	Absent	Absent	Present	Present	Absent
K-9454	Absent	Absent	Present	Present	Absent
458/13	Present	Absent	Present	Present	Absent
806/13	Present	Absent	Present	Present	Absent
287/13	Present	Absent	Present	Present	Absent
ERS180133	Present	Absent	Present	Present	Absent
K-276	Present	Absent	Present	Present	Absent
ERS369526	Present	Absent	Present	Present	Absent
ERS180092	Present	Absent	Present	Present	Absent
ERS369479	Present	Absent	Present	Present	Absent
K-9411	Present	Absent	Present	Present	Absent
DE0090_2868493	Present	Absent	Present	Present	Absent
JSMDU00003052_5	Present	Absent	Present	Present	Absent
ERS369545	Present	Absent	Present	Present	Absent
10-7674					
ERS180100	Present	Absent	Present	Present	Absent
ERS369517	Present	Absent	Present	Present	Absent
11-6955	Present	Absent	Present	Present	Absent
76/13	Present	Absent	Present	Present	Absent
ERS088047	Absent	Absent	Present	Present	Absent
JSMDU00003036_5	Present	Absent	Present	Present	Absent
K-10248	Absent	Absent	Present	Present	Absent
sh0315_4464319	Absent	Absent	Present	Present	Absent
80-11-358-2172	Present	Absent	Present	Present	Absent
SF0743	Present	Absent	Present	Present	Absent
Sh05-8094	Present	Absent	Present	Present	Absent
ERS369514	Present	Absent	Present	Present	Absent
ERS180135	Present	Absent	Present	Present	Absent
ERS372309	Present	Absent	Present	Present	Absent
11-2240	Absent	Absent	Present	Present	Absent
K-10368	Absent	Absent	Present	Present	Absent
JSMDU00003044_5	Present	Absent	Present	Present	Absent
10-1295	Present	Absent	Present	Present	Absent
80-13-058-4645	Present	Absent	Present	Present	Absent
ERS180117	Present	Absent	Present	Present	Absent
ERS180127	Present	Absent	Present	Present	Absent
ERS369503	Present	Absent	Present	Present	Absent
136/13	Present	Absent	Present	Present	Absent
ERS369495	Present	Absent	Present	Present	Absent
80-12-110-4516	Present	Absent	Present	Present	Absent
80-12-011-3999	Present	Absent	Present	Present	Absent
Sh08-3483	Present	Absent	Present	Present	Absent
ERS180056	Present	Absent	Present	Present	Absent
ERS369477	Present	Absent	Present	Present	Absent
ERS369544	Present	Absent	Present	Present	Absent
443/13	Present	Absent	Present	Present	Present
12-6716	Absent	Absent	Present	Present	Absent
ERS180097	Present	Absent	Present	Present	Absent
11-820	Present	Absent	Present	Present	Absent
10-7290	Present	Absent	Present	Present	Absent
ERS369504	Present	Absent	Present	Present	Present
ERS369538	Present	Absent	Present	Present	Absent
Sh07-4848	Present	Absent	Present	Present	Absent
ERS369537	Present	Absent	Present	Present	Absent
K-9339	Absent	Absent	Present	Present	Absent
ERS369510	Present	Absent	Present	Present	Absent
84/13	Present	Absent	Present	Present	Absent
ERS180120	Present	Absent	Present	Present	Absent
ERS369530	Present	Absent	Present	Present	Present
Sh05-0787	Present	Absent	Present	Present	Absent
JSMDU00003047_	Present	Absent	Present	Present	Absent
ERS180098	Present	Absent	Present	Present	Absent
SF1102	Present	Absent	Present	Present	Absent
ERS369528	Present	Absent	Present	Present	Absent
407/13	Present	Absent	Present	Present	Absent

K-9375	Absent	Absent	Present	Present	Absent
ERS180073	Present	Absent	Present	Present	Absent
ERS180113	Present	Absent	Present	Present	Absent
106/13	Present	Absent	Present	Present	Absent
ERS088049	Absent	Absent	Present	Present	Absent
ERS180057	Present	Absent	Present	Present	Absent
12-1897	Present	Absent	Present	Present	Absent
Sh09-4409	Present	Absent	Present	Present	Absent
K-9278	Absent	Absent	Present	Present	Absent
ERS180104	Present	Absent	Present	Present	Absent
JSMDU00003032_5	Present	Absent	Present	Present	Absent
627/13	Present	Absent	Present	Present	Absent
568/13	Present	Absent	Present	Present	Absent
ERS369460	Present	Absent	Present	Present	Absent
JSMDU00003034_5	Present	Absent	Present	Present	Absent
ERS180061	Present	Absent	Present	Present	Absent
ERS180077	Present	Absent	Present	Present	Absent
388/13	Present	Absent	Present	Present	Absent
K-10343	Absent	Absent	Present	Present	Absent
ERS087995	Absent	Absent	Present	Present	Absent
ERS180145	Present	Absent	Present	Present	Absent
ERS369475	Present	Absent	Present	Present	Absent
5/63					
ERS369493	Present	Absent	Present	Present	Absent
ERS180112	Absent	Absent	Present	Present	Absent
ERS369521	Present	Absent	Present	Present	Absent
ERS369462	Present	Absent	Present	Present	Absent
Sh07-4943	Absent	Absent	Present	Present	Absent
ERS180076	Present	Absent	Present	Present	Absent
179/13	Present	Absent	Present	Present	Absent
217/13	Present	Absent	Present	Present	Absent
ERS180150	Present	Absent	Present	Present	Absent
ERS031772	Present	Absent	Present	Present	Absent
ERS180131	Present	Absent	Present	Present	Absent
11-632	Present	Absent	Present	Present	Absent
ERS180107	Present	Absent	Present	Present	Absent
ERS369470	Present	Absent	Present	Present	Absent
13-3909	Present	Absent	Present	Present	Absent
ERS369519	Present	Absent	Present	Present	Absent
ERS369512	Present	Absent	Present	Present	Absent
10-2493	Present	Absent	Present	Present	Absent
ERS180070	Present	Absent	Present	Present	Absent
80-12-339-4617	Present	Present	Present	Present	Absent
ERS369539	Present	Absent	Present	Present	Present
ERS088050	Absent	Absent	Present	Present	Absent
ERS180125	Absent	Present	Present	Present	Absent
ERS180146	Present	Absent	Present	Present	Absent
K-9169	Absent	Absent	Present	Present	Absent
ERS180101	Present	Absent	Present	Present	Absent
ERS180079	Present	Absent	Present	Present	Absent
JSMDU00003049_5	Present	Absent	Present	Present	Absent
JSMDU00003046_5	Present	Absent	Present	Present	Absent
ERS369499	Present	Absent	Present	Present	Absent
285/13	Present	Absent	Present	Present	Present
sh0313_4464317	Absent	Absent	Present	Present	Absent
ERS180091	Present	Absent	Present	Present	Absent
ERS369461	Present	Absent	Present	Present	Absent
ERS369516	Present	Absent	Present	Present	Absent
198/13	Present	Absent	Present	Present	Absent
ERS369457	Present	Absent	Present	Present	Absent
ERS180095	Present	Absent	Present	Present	Absent
ERS180122	Present	Absent	Present	Present	Absent
414/13	Present	Absent	Present	Present	Absent
ERS180084	Present	Absent	Present	Present	Absent
ERS180143	Present	Absent	Present	Present	Absent
ERS369520	Present	Absent	Present	Present	Present
ERS180134	Present	Absent	Present	Present	Absent
ERS180108	Present	Absent	Present	Present	Absent
K-9256	Absent	Absent	Present	Present	Absent
ERS369500	Present	Absent	Present	Present	Absent
ERS180132	Absent	Absent	Present	Present	Absent
09-9039	Present	Absent	Present	Present	Absent
ERS180074	Present	Absent	Present	Present	Absent
ERS369523	Present	Absent	Present	Present	Absent
ERS180094	Present	Absent	Present	Present	Absent
201/13	Present	Absent	Present	Present	Absent
ERS180055	Present	Absent	Present	Present	Absent
ERS180069	Present	Absent	Present	Present	Absent
ERS180144	Present	Absent	Present	Present	Absent
ERS180072	Present	Absent	Present	Present	Absent
10262_2868448	Present	Present	Present	Present	Absent
ERS180140	Present	Absent	Present	Present	Absent
ERS031757	Present	Absent	Present	Present	Absent
ERS180088	Present	Absent	Present	Present	Absent
ERS369502	Present	Absent	Present	Present	Absent
05-11-032-2299	Absent	Absent	Present	Present	Absent
237/13	Present	Absent	Present	Present	Absent
SF7955	Present	Absent	Present	Present	Absent
290/13	Present	Absent	Present	Present	Absent
447/13	Present	Absent	Present	Present	Absent
204/13	Present	Absent	Present	Present	Absent
SF7787	Present	Absent	Present	Present	Absent
ERS180119	Present	Absent	Present	Present	Absent