

Figure S1. Selection of the *S. enterica* serotype Typhimurium isolates for determining the minimal inhibition concentrations (MICs) of ampicillin and penicillin G. Maximum-likelihood phylogeny, as shown in Fig. 4, surrounded by two colored rings representing (1) the isolates containing a beta-lactamase gene studied, and (2) the 67 isolates selected for MIC determination.

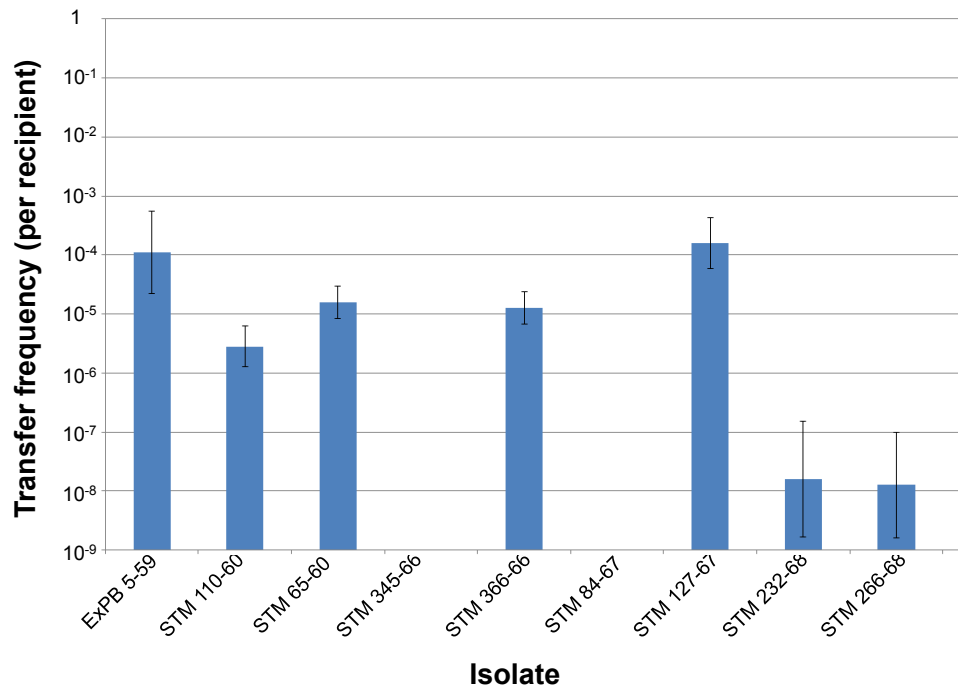


Figure S2. Transfer frequencies of various *S. enterica* serotype Typhimurium plasmids. The results are presented as mean values (\pm standard errors) for three independent experiments.

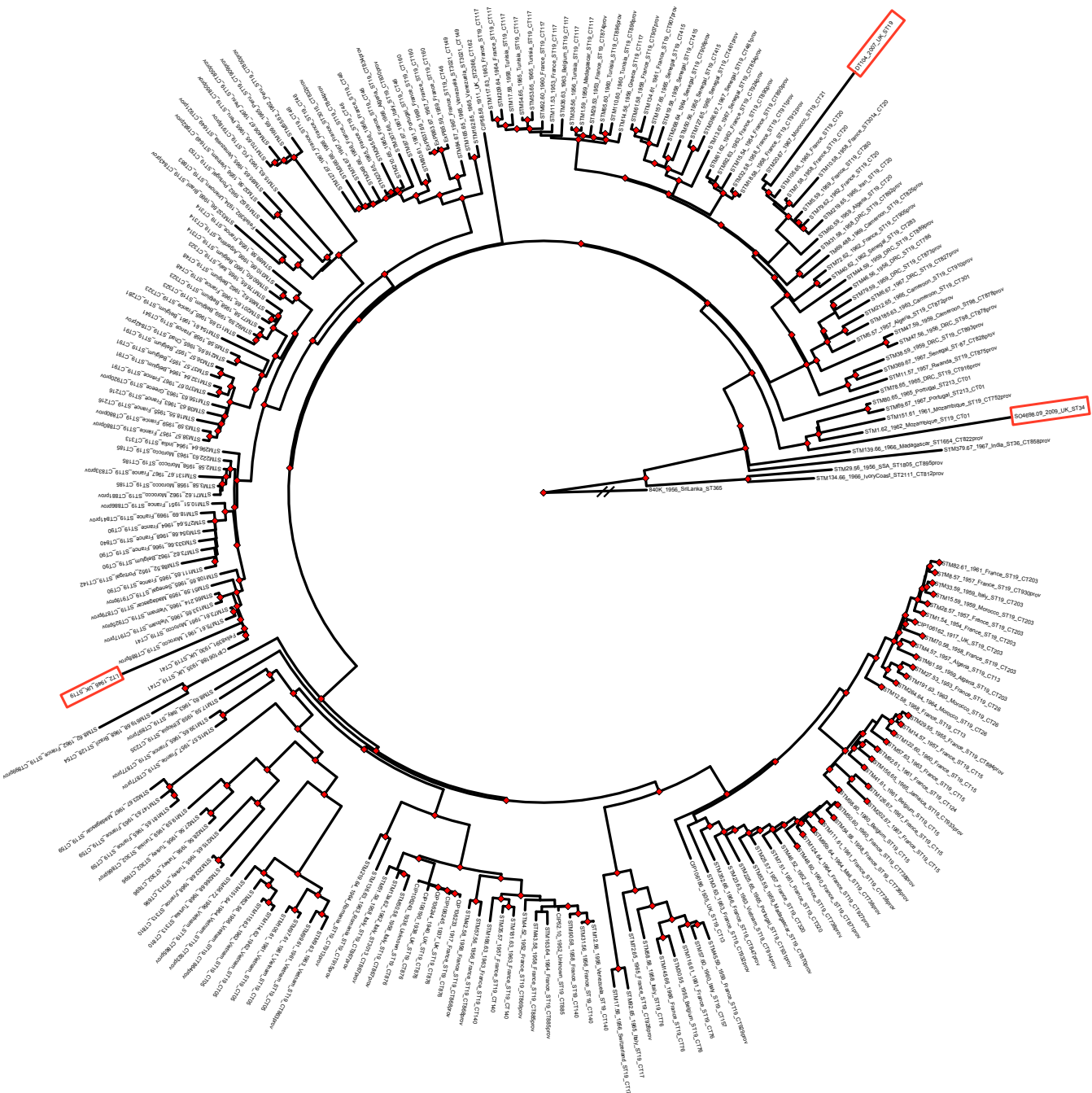


Figure S3. Maximum-likelihood phylogeny of the *S. enterica* serotype Typhimurium isolates, as shown in Fig.4, but with the names of the isolates, the country and year of isolation, the multilocus sequence type (ST) and CRISPOL type (CT). The reference genomes are boxed in red.