



HAL
open science

Increased Osmolarity in Biofilm Triggers RcsB-Dependent Lipid A Palmitoylation in *Escherichia coli*.

Magdalena Szczesny, Christophe Beloin, Jean-Marc Ghigo

► **To cite this version:**

Magdalena Szczesny, Christophe Beloin, Jean-Marc Ghigo. Increased Osmolarity in Biofilm Triggers RcsB-Dependent Lipid A Palmitoylation in *Escherichia coli*. *mBio*, 2018, 9 (4), pp.e01415-18. 10.1128/mBio.01415-18 . pasteur-01875319

HAL Id: pasteur-01875319

<https://pasteur.hal.science/pasteur-01875319>

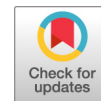
Submitted on 17 Sep 2018

HAL is a multi-disciplinary open access archive for the deposit and dissemination of scientific research documents, whether they are published or not. The documents may come from teaching and research institutions in France or abroad, or from public or private research centers.

L'archive ouverte pluridisciplinaire **HAL**, est destinée au dépôt et à la diffusion de documents scientifiques de niveau recherche, publiés ou non, émanant des établissements d'enseignement et de recherche français ou étrangers, des laboratoires publics ou privés.



Distributed under a Creative Commons Attribution 4.0 International License



Increased Osmolarity in Biofilm Triggers RcsB-Dependent Lipid A Palmitoylation in *Escherichia coli*

Magdalena Szczesny,^a Christophe Beloin,^a Jean-Marc Ghigo^a

^aInstitut Pasteur, Genetics of Biofilms Laboratory, Paris, France

ABSTRACT Biofilms are often described as protective shelters that preserve bacteria from hostile surroundings. However, biofilm bacteria are also exposed to various stresses and need to adjust to the heterogeneous physicochemical conditions prevailing within biofilms. In Gram-negative bacteria, such adaptations can result in modifications of the lipopolysaccharide, a major component of the outer membrane characterized by a highly dynamic structure responding to environmental changes. We previously showed that Gram-negative biofilm bacteria undergo an increase in lipid A palmitoylation mediated by the PagP enzyme, contributing to increased resistance to host defenses. Here we describe a regulatory pathway leading to transcriptional induction of *pagP* in response to specific conditions created in the biofilm environment. We show that *pagP* expression is induced via the Rcs envelope stress system independently of the Rcs phosphorelay cascade and that it requires the GadE auxiliary regulator. Moreover, we identify an increase in osmolarity (i.e., ionic stress) as a signal able to induce *pagP* expression in an RcsB-dependent manner. Consistently, we show that the biofilm is a hyperosmolar environment and that RcsB-dependent *pagP* induction can be dampened in the presence of an osmoprotectant. These results provide new insights into the adaptive mechanisms of bacterial differentiation in biofilm.

IMPORTANCE The development of the dense bacterial communities called biofilms creates a highly heterogeneous environment in which bacteria are subjected to a variety of physicochemical stresses. We investigated the mechanisms of a widespread and biofilm-associated chemical modification of the lipopolysaccharide (LPS), a major component of all Gram-negative bacterial outer membranes. This modification corresponds to the incorporation, mediated by the enzyme PagP, of a palmitate chain into lipid A (palmitoylation) that reduces bacterial recognition by host immune responses. Using biochemical and genetic approaches, we demonstrate that a significant part of biofilm-associated lipid A palmitoylation is triggered upon induction of *pagP* transcription by the hyperosmolar biofilm environment. *pagP* induction is regulated by RcsB, the response regulator of the Rcs stress response pathway, and is not observed under planktonic conditions. Our report provides new insights into how physiological adaptations to local biofilm microenvironments can contribute to decreases in susceptibility to antimicrobial agents and host immune defenses.

KEYWORDS biofilm, LPS, Rcs envelope stress, lipid A, palmitoylation

In constantly changing environments, bacteria have evolved different mechanisms enabling them to sense and respond to nutrient and stress variations. This capacity for adaptation is particularly important during the development of highly heterogeneous biofilms, in which bacteria are exposed to a variety of physicochemical gradients rarely encountered by free-living organisms (1). Physiological adaptation to the biofilm environment leads to characteristic decreased susceptibility to antimicrobial agents

Received 1 July 2018 Accepted 19 July 2018 Published 21 August 2018

Citation Szczesny M, Beloin C, Ghigo J-M. 2018. Increased osmolarity in biofilm triggers RcsB-dependent lipid A palmitoylation in *Escherichia coli*. *mBio* 9:e01415-18. <https://doi.org/10.1128/mBio.01415-18>.

Editor Matthew R. Parsek, University of Washington

Copyright © 2018 Szczesny et al. This is an open-access article distributed under the terms of the [Creative Commons Attribution 4.0 International license](https://creativecommons.org/licenses/by/4.0/).

Address correspondence to Jean-Marc Ghigo, jmghigo@pasteur.fr.

and host immune defenses (2, 3) at the origin of chronic and device-related biofilm infections (4).

Several studies showed that modifications in lipopolysaccharide (LPS) structure in Gram-negative bacteria also contribute to biofilm tolerance of antimicrobial compounds (5, 6). Consistently, we had previously reported that biofilm formation in *Escherichia coli* and other Gram-negative bacterial species is associated with increased incorporation of a palmitate acyl chain into the LPS lipid A domain. Lipid A palmitoylation attenuates the Toll-like receptor 4 (TLR4)-mediated inflammatory host response and increases *in vivo* survival of biofilm bacteria (7). Lipid A palmitoylation is mediated by the palmitoyl transferase PagP (8–10) and is increased in both biofilm and prolonged planktonic cultures in late stationary phase (7), suggesting that these two environments could share common conditions triggering this modification. However, while *E. coli* *pagP* expression is repressed by H-NS and positively regulated by the anti-H-NS factor SlyA, the exact mechanism underlying biofilm-associated increased lipid A modification remains unclear.

In planktonically grown *E. coli*, the *pagP* gene has been demonstrated to depend on the PhoPQ and EvgAS transcriptional regulatory systems (11, 12). The PagP enzyme itself can also be activated posttranslationally by a redistribution of phospholipids within the outer membrane (11). Here we showed that increased lipid A palmitoylation in biofilm results from two distinct molecular mechanisms: a posttranslational activation of PagP observed in biofilm and under late-stationary-phase conditions (12–14) and a previously undescribed transcriptional induction of *pagP* expression in biofilm only. We determined that induction of *pagP* expression in mature biofilm is dependent on RcsB, a regulator of the Rcs envelope stress response phosphorelay (15, 16). This Rcs-dependent induction of *pagP* expression can be recapitulated by exposing planktonic bacteria to high saline stress, suggesting that *pagP* expression is triggered in response to specific physicochemical cues developing within mature biofilms. This report therefore provides new insights into how physiological adaptations to the local biofilm microenvironment can contribute to increased stress resistance in biofilm bacteria.

RESULTS

***pagP* transcription is specifically induced in *E. coli* biofilms.** We previously reported that *E. coli* biofilm bacteria show a higher level of lipid A palmitoylation on LPS gels than planktonic bacteria. However, this difference between planktonic and biofilm LPS profiles is attenuated with time (Fig. 1A). Since accumulation of lipid A palmitoylated species can result either from posttranslational activation of PagP (12, 13) or from transcriptional induction of the *pagP* gene (17), we decided to monitor *pagP* expression in *E. coli* using a *pagP-lacZ* transcriptional operon fusion, in which *lacZ* is inserted downstream of an intact *pagP* gene. In contrast to planktonic and biofilm lipid A profiles on LPS gels, we observed a strictly biofilm-associated increase of the *pagP* expression level, whether tested at 24 or 96 h (Fig. 1B). To further confirm the correlation between biofilm formation and transcriptional induction of *pagP* expression in biofilm, we compared the levels of *pagP* expression in BW25113 and MG1655 *E. coli* K-12 backgrounds carrying or not the biofilm-promoting F conjugative plasmid (18). In both cases, F⁺ biofilm-forming strains displayed earlier maximum induction of *pagP* (Fig. 1C and D; see also Fig. S1 in the supplemental material), confirming the biofilm-associated induction of *pagP* expression. In the rest of this report, *pagP* expression levels are compared at 48 h using F-carrying strains.

Transcriptional regulator RcsB regulates *pagP* expression in biofilms. *pagP* expression is controlled by histone-like protein repressor H-NS and the SlyA regulator (7). However, while inactivation of *slyA* reduced *pagP* expression in both planktonic culture and biofilms, it did not abolish *pagP* induction in biofilms, suggesting that, in addition to SlyA, other regulators play a role in biofilm-associated *pagP* expression (7). We therefore tested the contribution of various envelope stress and general response regulators (Fig. 2A; see also Fig. S2) and found that a mutation in *rcsB* was the only

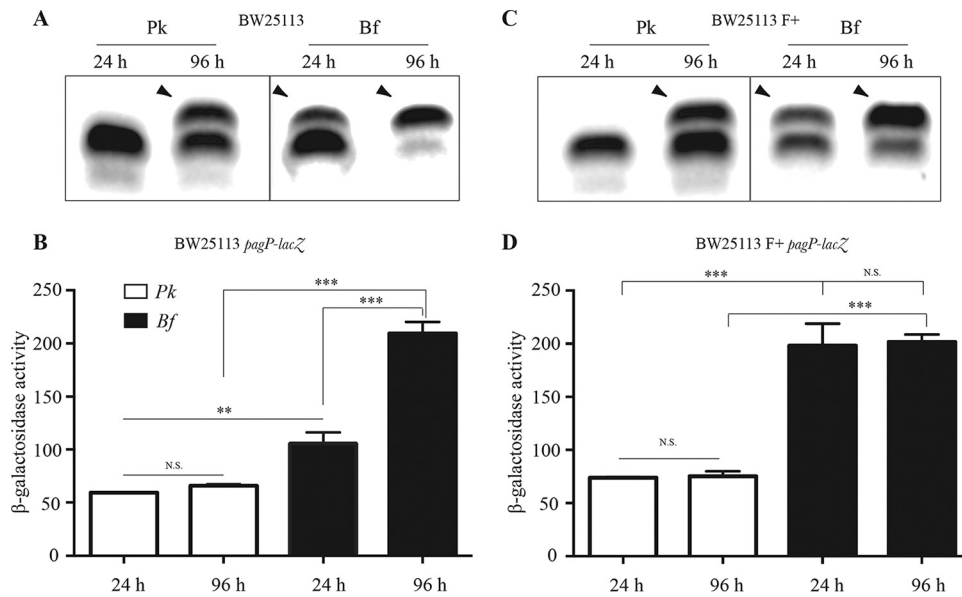


FIG 1 *pagP* transcription is induced in *E. coli* biofilms. (A and C) Tricine SDS-PAGE/periodate-silver staining analysis of LPS extracted from planktonic (Pk) and biofilm (Bf) *E. coli* K-12 BW25113 (A) or its closely related derivative BW25113 F⁺ carrying the biofilm-promoting F conjugative plasmid (C). LPS was analyzed after 24 or 96 h of growth in M63B1 supplemented with 0.4% glucose; arrowheads indicate a modified LPS band. (B and D) The corresponding level of *pagP* expression in planktonic (Pk) cultures and biofilm (Bf) was assessed by measuring β -galactosidase activity (Miller units) in *E. coli* K-12 BW25113 *pagP-lacZ* (B) and *E. coli* K-12 BW25113 F⁺ *pagP-lacZ* (D). Statistical significance was assessed using one-way analysis of variance (ANOVA) followed by Bonferroni's *post hoc* comparison tests. Compared values that are significantly different are indicated by asterisks as follows: **, $P < 0.01$; ***, $P < 0.001$. N.S., not significant.

mutation abolishing all differences between planktonic and biofilm *pagP* expression in a biofilm-forming *E. coli* strain carrying the *pagP-lacZ* fusion (Fig. 2A). RcsB is the response regulator of the Rcs system, a phosphorelay transduction system that responds to various environmental stresses (19–21). This phenotype was fully complemented upon plasmid-based expression of *rcsB* in medium-copy-number plasmid pCA24N-*rcsB* (Fig. 2B), confirming the contribution of RcsB to *pagP* biofilm regulation. Finally, we investigated the contribution of RcsB transcriptional induction to total accumulation of palmitoylated lipid A species. Using matrix-assisted laser desorption ionization–time of flight mass spectrometry (MALDI-TOF MS), we compared the relative abundances of hexa-acylated (nonpalmitoylated) and hepta-acylated (palmitoylated) lipid A species in *E. coli* wild-type (WT) and $\Delta rcsB$ biofilms. The MALDI-TOF MS analysis shows two major peaks, at $m/z = 1,797.4$, corresponding to the hexa-acylated nonpalmitoylated lipid A species, and at $m/z = 2,035.6$, corresponding to the hepta-acylated palmitoylated lipid A species. These results show that inactivation of *rcsB* leads to a 2-fold decrease in the ratio of palmitoylated and nonpalmitoylated lipid A species [i.e., lipid A(2035.8)/lipid A(1797.4)] (Fig. 2C and D). To further confirm that the decreased level of palmitoylated lipid A species in the RcsB mutant was due to the absence of *pagP* transcriptional induction, we tested whether deletion of *rcsB* could also impact PagP at the posttranslational level. To address this issue, we used a *Pcl-pagP* strain, in which *pagP* is placed under the control of a constitutive promoter, and monitored the lipid A palmitoylation profile in the presence or absence of RcsB. We did not observe any decrease of lipid A palmitoylation in the *rcsB* mutant (Fig. S3). Taken together, these results indicate that lipid A palmitoylation occurs both through post-translational activation of the basal PagP enzyme inserted in the outer membrane and through a RcsB-dependent transcriptional induction of the *pagP* gene.

RcsB-dependent biofilm regulation does not require RcsACDF or phosphorylation. The Rcs pathway is composed of several proteins (RcsA, RcsC, RcsD, and RcsF) involved in phosphorylation and dephosphorylation of response regulator RcsB, mod-

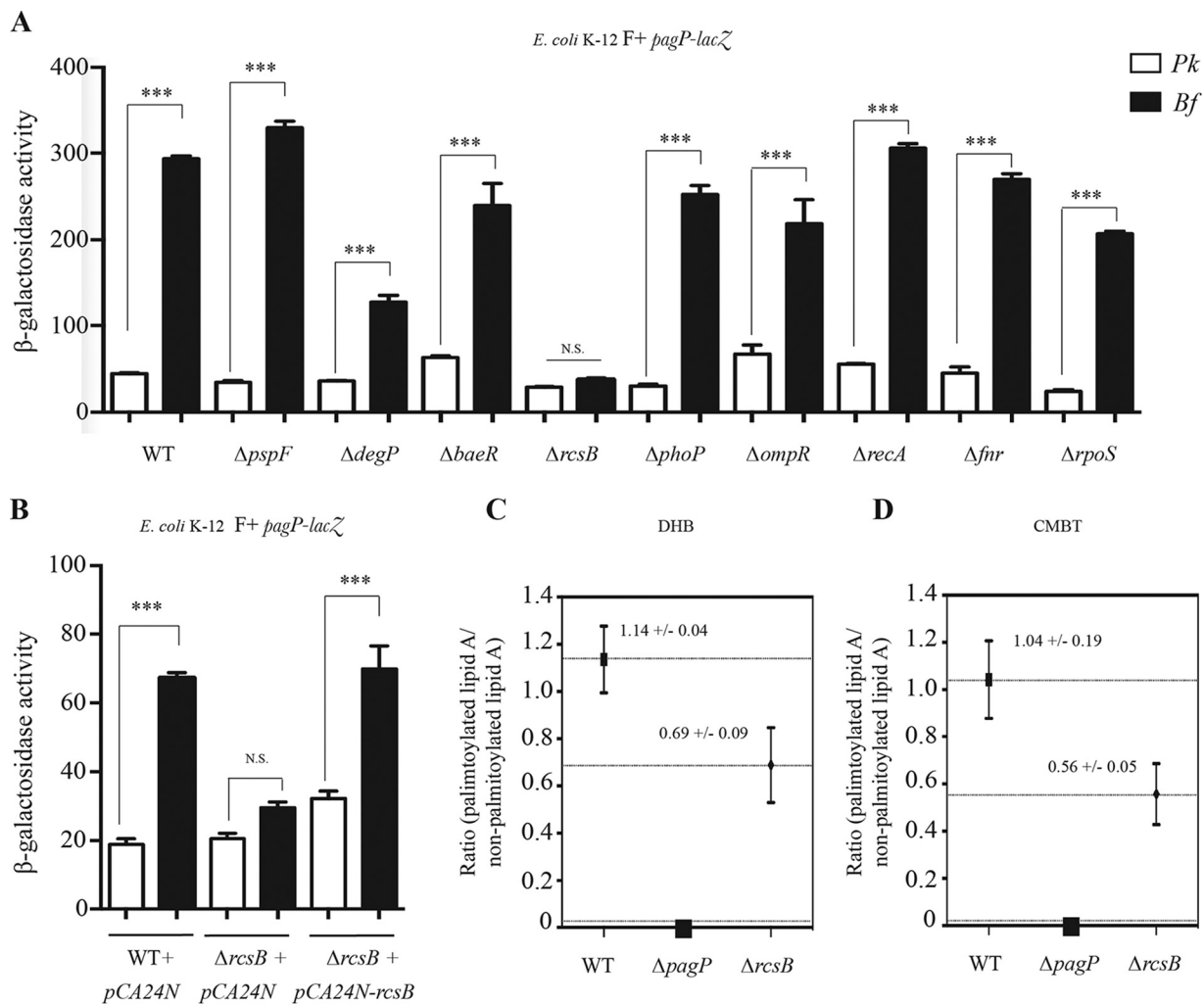


FIG 2 RcsB-dependent regulation of *pagP* increases lipid A palmitoylation in biofilm bacteria. (A) *E. coli* K-12 BW25113 F+ *pagP-lacZ* strains, including the wild-type (WT) strain or strains with the *pspF*, *degP*, *baeR*, *rcsB*, *phoP*, *ompR*, *recA*, *fnr*, or *rpoS* gene deleted, were grown in planktonic cultures (Pk) and biofilm (Bf) for 48 h, and β -galactosidase activity was measured. (B) *E. coli* K-12 BW25113 F+ *pagP-lacZ* pCA24N, *E. coli* K-12 BW25113 F+ Δ *rcsB* *pagP-lacZ* pCA24N, and *E. coli* K-12 BW25116 F+ Δ *rcsB* *pagP-lacZ* pCA24N-*lacZ* were grown in planktonic (Pk) cultures and biofilm (Bf) for 48 h in M63B1 minimal medium supplemented with 0.4% glucose and 0.05 mM isopropyl- β -D-thiogalactopyranoside (IPTG), and β -galactosidase levels were measured. Statistical significance was assessed using one-way analysis of variance (ANOVA) followed by Bonferroni's *post hoc* comparison tests (***, $P < 0.001$; N.S., not significant). (C and D) MALDI-TOF MS analysis of lipid A extracted from *E. coli* K-12 MG1655 F+, *E. coli* K-12 MG1655 F+ Δ *pagP*, and *E. coli* K-12 MG1655 F+ Δ *rcsB* 48h biofilm bacteria was performed using a DHB matrix (C) or a CMBT matrix (D). Analysis of lipid A by MALDI-TOF MS in biofilm bacteria shows two major peaks, at $m/z = 1,797.4$, corresponding to a hexa-acylated nonpalmitoylated lipid A species, and at $m/z = 2,035.6$, corresponding to a hepta-acylated palmitoylated lipid A species. Results are presented as the ratio of palmitoylated and nonpalmitoylated lipid A species: A(2035.8)/A(1797.4).

ulating its ability to bind DNA and regulate target gene expression. To study the contribution of Rcs components to RcsB-dependent induction of *pagP*, we monitored planktonic and biofilm *pagP* expression in several *rcs* mutants and showed that none of the tested *rcs* mutants affected *pagP* expression as much as *rcsB*, suggesting that, in addition to signaling from the outer membrane, *pagP* induction might also be partially independent of the classical Rcs phosphorelay cascade (Fig. 3A).

RcsB is known to be alternatively phosphorylated via an independent pathway that uses acetyl-phosphate (AcP), an intermediate metabolite of the Pta-AckA pathway, as a phosphoryl group donor (22). Although deletion of *ackA* leads to accumulation of AcP in the cell and therefore favors RcsB activation, deletion of both *pta* and *ackA* results in the absence of AcP production. To test whether the acetyl-phosphate level drives *pagP* induction via alternative and Rcs-independent RcsB phosphorylation, we monitored *pagP* induction in a *pta-ackA* mutant background, in which AcP production is abolished

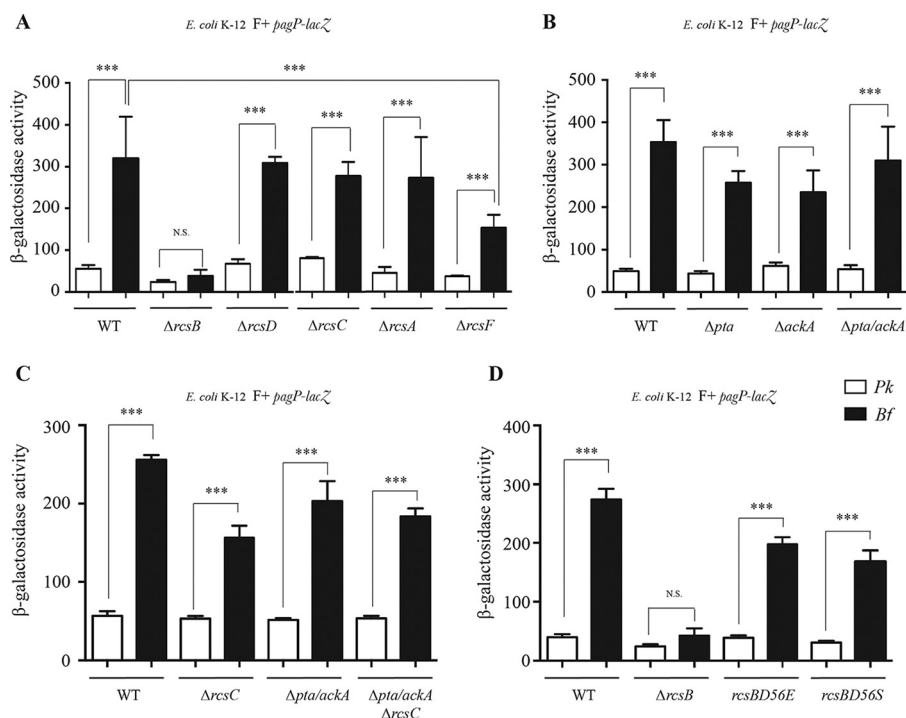


FIG 3 *pagP* transcriptional regulation does not require RcsB phosphorylation. (A) *E. coli* K-12 MG1655 *F*⁺ *pagP-lacZ* strains, including the wild-type (WT) strain and strains with the *rcsB*, *rcsD*, *rcsC*, *rcsA*, or *rcsF* gene deleted, were grown in planktonic (Pk) cultures and biofilm (Bf) for 48 h, and β -galactosidase activity was measured. (B) *E. coli* K-12 MG1655 *F*⁺ *pagP-lacZ* strains, including the WT or strains with the *pta* gene or the *ackA* gene or both the *pta* gene and the *ackA* gene deleted, were grown in planktonic (Pk) cultures and biofilm (Bf) for 48 h, and β -galactosidase activity was measured. (C) The *E. coli* K-12 MG1655 *F*⁺ *pagP-lacZ* WT strain or strains with the *rcsC* or the *pta/ackA* genes or both the *rcsC* and *pta/ackA* genes deleted were grown in planktonic (Pk) cultures and biofilm (Bf) for 48 h. β -Galactosidase activity was measured. (D) The *E. coli* K-12 MG1655 *F* *pagP-lacZ* WT strain and the $\Delta rcsB$ strain as well as strains *rcsBD56E* and *rcsBD56S* (with a constitutively activated variant and a nonphosphorylatable variant of the *rcsB* gene, respectively), were grown in planktonic (Pk) cultures and biofilm (Bf) for 48 h, and β -galactosidase levels were measured. Statistical significance was assessed using one-way analysis of variance (ANOVA), followed by Bonferroni's *post hoc* comparison tests (***, $P < 0.001$; N.S., not significant).

(9). We did not observe a significant difference in *pagP* expression in the double *pta/ackA* mutant compared to the wild-type strain (Fig. 3B). Moreover, we found that *pagP* expression was still induced in biofilms in a strain combining both *rcsC* and *ackA/pta* mutations (Fig. 3C).

These results support the hypothesis that regulation of *pagP* expression does not require RcsB phosphorylation via the Rcs phosphorelay or acetyl phosphate pathway.

Consistently, whereas expression of the *rprA* gene, whose transcription requires the phosphorylated form of RcsB (14, 23), was induced in a strain harboring a constitutively phosphorylated variant of RcsB, *RcsB_{D56E}*, and was decreased in the nonphosphorylatable variant *RcsB_{D56S}* (Fig. S4), biofilm-specific induction of *pagP* was not impaired in any of the *rcsB* alleles (Fig. 3D).

Contribution of GadE, SlyA, and H-NS in RcsB-dependent biofilm regulation of *pagP*.

We then tested the potential contribution of several auxiliary transcription regulatory proteins known to interact with nonphosphorylated RcsB, including BglJ, GadE, MatA, and DctR (15, 24–26). We showed that only a mutation in *gadE* abolished biofilm-specific induction of *pagP* (Fig. 4). GadE was previously shown to regulate transcription of the glutamate decarboxylase genes *gadA* and *gadB* in complex with RcsB but independently of RcsB phosphorylation (26). To study the regulatory interplay between H-NS-, SlyA-, and RcsB/GadE-dependent regulation of *pagP* under biofilm conditions, we first tested whether *slyA* transcription is regulated by RcsB. We therefore monitored *slyA* expression in the wild-type strain carrying the pCA24N or pCA24N-*rcsB*

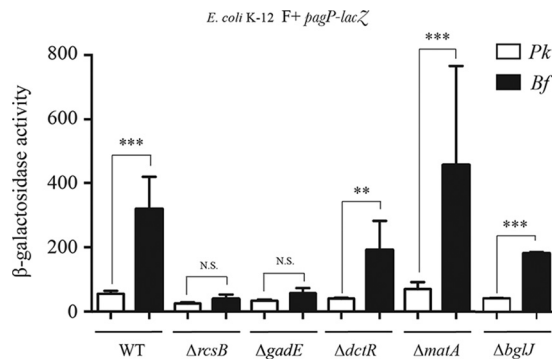


FIG 4 *pagP* biofilm induction requires GadE. *E. coli* K-12 MG1655 F+ *pagP-lacZ* strains, wild-type (WT) or with the *rcsB*, *gadE*, *dctR*, *matA*, or *bgIJ* gene deleted, were grown in planktonic (Pk) cultures and biofilm (Bf) for 48 h in M63B1 supplemented with 0.4% glucose. Statistical significance was assessed using one-way analysis of variance (ANOVA) followed by Bonferroni's *post hoc* comparison tests (*, $P < 0.05$; **, $P < 0.01$; ***, $P < 0.001$; N.S., not significant).

inducible plasmid, using a *slyA-lacZ* transcriptional fusion. We showed that overexpression of *rcsB* led to increased expression of *slyA* (Fig. 5A), suggesting that RcsB could positively regulate *slyA* expression, which would in turn positively regulate *pagP*.

However, overexpression of *rcsB* in a Δ*slyA* *pagP-lacZ* reporter strain still led to increased expression of *pagP* (Fig. 5B). We also tested the possibility that H-NS controls *pagP* expression in an indirect way that involves repression of the positive regulator *rcsB*. However, deletion of *rcsB* in an *hns*-deficient strain, in which *pagP* expression is derepressed, did not restore the wild-type level of *pagP* expression (Fig. 5C). These results therefore suggest that, while RcsB acts upstream of SlyA, other SlyA-independent inputs can contribute to alleviate H-NS-mediated repression of *pagP* (see model in Fig. 7).

Increased ionic strength triggers RcsB- and biofilm-dependent *pagP* expression. The implication of stress response regulators RcsB and GadE in regulation of *pagP* expression suggested that biofilm-associated induction of *pagP* could be triggered in response to physicochemical stress conditions created locally within the biofilm environment (27). The Rcs envelope stress system is known to respond to several physicochemical cues, including osmotic stress and exposure to highly ionic environments (20). To test whether RcsB/GadE-dependent expression of *pagP* is activated in response to osmotic stress in biofilm, we measured the osmolarity of planktonic and biofilm supernatants of *E. coli* after 24, 48, and 72 h of growth and showed that the osmolarity was consistently higher in biofilm supernatants than in planktonic samples (Fig. 6A). We further studied the contribution of osmotic stress to *pagP* gene expression by briefly exposing exponentially growing bacteria to salts such as NaCl or KCl and to polymers (sucrose or dextran) commonly used for studying bacterial response to osmotic stress, and we then monitored *pagP* expression. A significant increase in *pagP* gene expression was observed only when bacteria were exposed to NaCl or KCl (0.5 to 0.8 M) (Fig. 6B), and we found that this induction was dependent on *rcsB* (Fig. 6C). Consistently, monitoring the lipid A palmitoylation profile on LPS gels in the presence or absence of NaCl showed that the additional band corresponding to palmitoylated lipid A was observed when bacteria were exposed to NaCl (0.6 and 0.8 M) (Fig. 6B) and that the impact of NaCl was strongly reduced in the *rcsB* mutant strain (Fig. S5). Moreover, NaCl-dependent induction of *pagP* was strongly reduced in planktonic bacteria upon addition of the osmoprotectant osmolyte betaine (Fig. 6D), suggesting that ionic stress triggers *pagP* expression.

In *E. coli*, sensory proteins such as the KdpD sensor of the KdpDE two-component system can detect changes in osmolarity (28). Moreover, mechanosensitive channels such as that corresponding to the MscL membrane protein also participate in regulation of turgor pressure by modulating ion fluxes (29). To test whether changes in ion

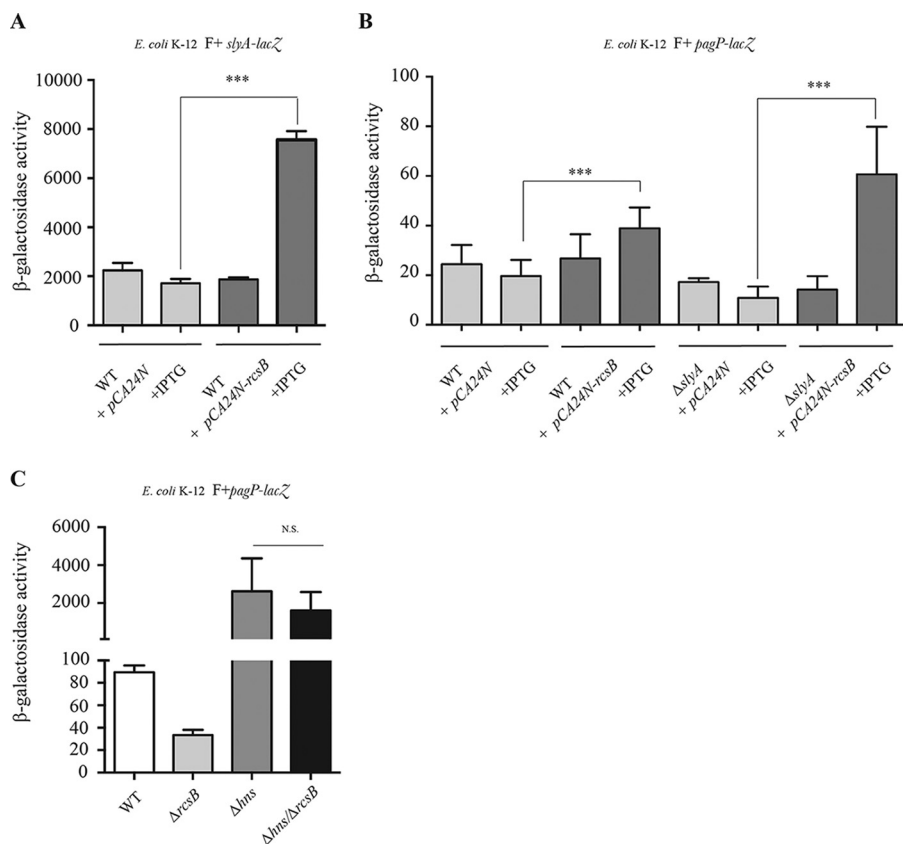


FIG 5 Role of SlyA and H-NS in RcsB-dependent regulation of *pagP*. (A) *E. coli* K-12 BW25113 F+ *slyA-lacZ* pCA24N and *E. coli* K-12 BW25113 F+ *slyA-lacZ* pCA24N-lacZ were grown in planktonic cultures overnight in M63B1 supplemented with 0.4% glucose in the presence or absence of 0.1 mM isopropyl-β-D-thiogalactopyranoside (IPTG), and β-galactosidase levels were measured. (B) *E. coli* K-12 BW25113 F+ pCA24N, *E. coli* K-12 BW25113 F+ pCA24N-rcsB, *E. coli* K-12 BW25113 F+ Δ*slyA* *pagP-lacZ* pCA24N, and *E. coli* K-12 BW25113 F+ Δ*slyA* *pagP-lacZ* pCA24N-rcsB were grown in planktonic cultures overnight in M63B1 supplemented with 0.4% glucose in the presence or absence of 0.1 mM isopropyl-β-D-thiogalactopyranoside (IPTG), and β-galactosidase levels were measured. (C) *E. coli* K-12 MG1655 F+ *pagP-lacZ*, *E. coli* K-12 MG1655 F+ Δ*rcsB* *pagP-lacZ*, *E. coli* K-12 MG1655 F+ Δ*hns* *pagP-lacZ*, and *E. coli* K-12 MG1655 F+ Δ*hns*/Δ*rcsB* *pagP-lacZ* strains were grown under planktonic conditions for 24 h and 48 h, and β-galactosidase activity was measured and statistical significance was assessed using one-way analysis of variance (ANOVA) followed by Bonferroni's *post hoc* comparison tests (N.S., not significant).

fluxes could activate RcsB-GadE-dependent regulation of lipid A palmitoylation, we monitored *pagP* induction in biofilms formed by *trkA*, *kdpD*, *mscL*, or *mscS* mutants but could not detect any impact on *pagP* transcriptional induction in biofilm (Fig. S6).

The GadE stress regulator is involved in maintenance of pH homeostasis and is induced under low-pH conditions (30). We therefore measured the pH of planktonic and biofilm supernatants of *E. coli* after 24, 48, and 72 h of growth to test whether expression of *pagP* is activated in response to pH changes and showed that the pH of biofilm supernatants is acidified compared to planktonic samples (Fig. S7A). However, growing planktonic bacteria at different pH levels had only a limited impact on *pagP* gene expression, indicating that *pagP* transcription is not induced by acid stress (Fig. S7B). Moreover, whereas *gadE* is required to induce *pagP* expression in biofilms, NaCl-dependent induction of *pagP* in planktonic bacteria was not abolished in a Δ*gadE* mutant (Fig. S8), suggesting that exposure to NaCl partially mimics conditions created in the biofilm environment.

These results demonstrate that increased ionic stress can trigger *pagP* expression in a RcsB-dependent and GadE-independent manner and suggest that increased ionic stress associated with increased osmolarity could be part of the signal activating RcsB and inducing *pagP* expression and lipid A palmitoylation in *E. coli* biofilms.

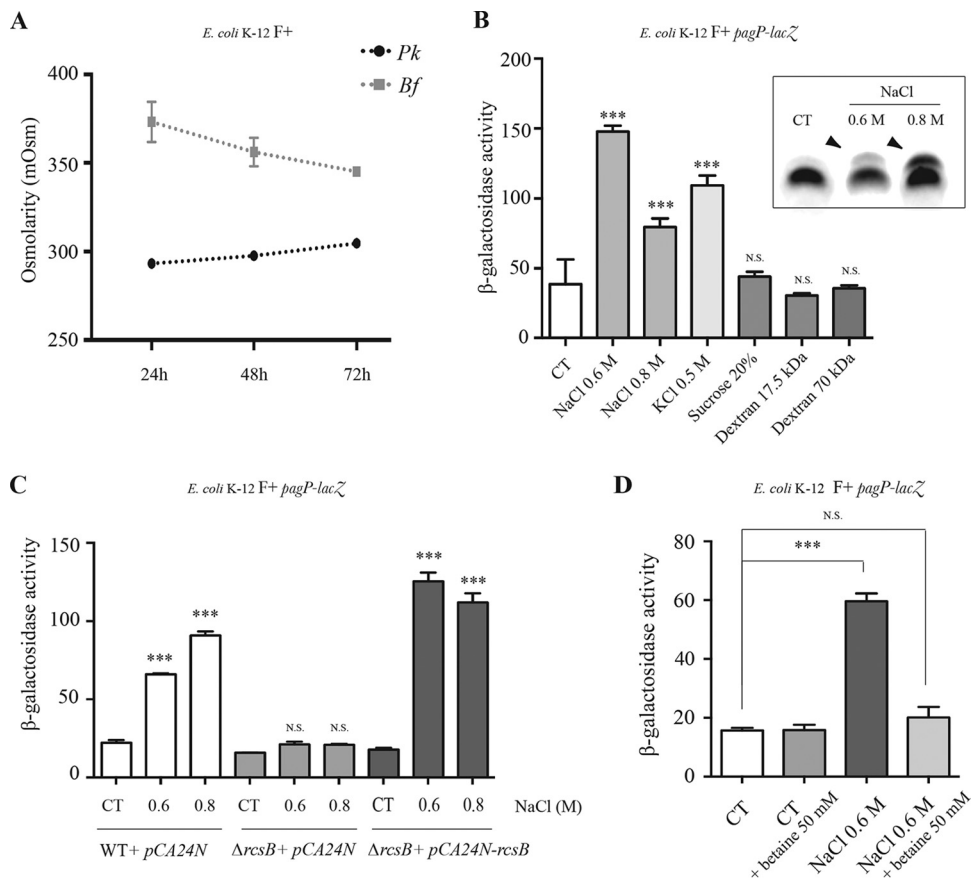


FIG 6 *pagP* transcriptional induction is osmotically regulated. (A) *E. coli* K-12 MG1655 F⁺ was grown under planktonic (Pk) or biofilm (Bf) conditions for 24, 48, and 72 h, and the osmolarity of the culture medium or biofilm supernatant was measured using an osmometer. (B) *E. coli* K-12 MG1655 F⁺ *pagP-lacZ* was grown in planktonic cultures to an OD of 0.4 to 0.5 and exposed for 1 h to NaCl (0.6 or 0.8 M), KCl (0.5 M), sucrose (20%), and dextran (17.5 kDa or 70 kDa at 10%), and β -galactosidase activity was measured. Inset: analysis of LPS extracted from control and NaCl-exposed (0.6 M or 0.8 M) planktonic bacteria by Tricine SDS-PAGE. Arrowheads indicate a modified LPS band. (C) *E. coli* K-12 BW25113 F⁺ *pagP-lacZ* pCA24N, *E. coli* K-12 BW25113 F⁺ Δ rcsB *pagP-lacZ* pCA24N, and *E. coli* K-12 BW25113 F⁺ Δ rcsB *pagP-lacZ* pCA24N-rcsB were grown in planktonic cultures in M63B1 supplemented with 0.4% glucose and 0.1 mM isopropyl- β -D-thiogalactopyranoside (IPTG) to an OD of 0.4 to 0.5. NaCl (0.6 or 0.8 M) was added to the cultures, and β -galactosidase activity was measured after 1 h of incubation. (D) *E. coli* K-12 MG1655 F⁺ *pagP-lacZ* was grown in planktonic cultures to an OD of 0.4 to 0.5 and exposed to 0.6 M of NaCl in the presence or absence of betaine (an osmoprotective osmolyte). β -Galactosidase activity was measured after 1 h of incubation. Statistical significance was assessed against the corresponding untreated control (CT) using one-way analysis of variance (ANOVA) followed by Bonferroni's *post hoc* comparison tests (***, $P < 0.001$; N.S., not significant).

DISCUSSION

LPS is a major component of the Gram-negative bacterial outer membrane and possesses a highly dynamic structure responding to environmental changes (31). We previously showed that formation of Gram-negative bacterial biofilms is associated with transient palmitoylation of lipid A mediated by palmitoyl transferase enzyme PagP, contributing to protection of biofilm bacteria from the host immune system (7). Here we investigated mechanisms underlying induction of this biofilm-associated LPS modification.

Increased lipid A palmitoylation is a general feature of Gram-negative bacterial biofilms which, in *E. coli*, can result either from transcriptional induction of *pagP* or from posttranslational activation of the PagP enzyme in response to perturbations of outer membrane lipid asymmetry (12). In prolonged planktonic cultures, absence of transcriptional induction of *pagP* while palmitoylation occurs suggests that, under these growth conditions, increased lipid A modification could result solely from posttranslational activation of PagP. Stress created under these extreme stationary-phase conditions could alter the integrity of the outer membrane, for instance, by causing phospholipid substrate migration to the

outer leaflet, where they can activate the basal level of resident PagP molecules (32, 33). Given the well-established stationary-phase character of the biofilm environment (34), it is likely that a significant proportion of the lipid A palmitoylation observed in biofilm bacteria also originates from posttranslational activation of PagP.

In addition to potential posttranslational activation of PagP, we showed that the biofilm environment triggers RcsB-dependent transcriptional induction of *pagP*, also contributing to the global increase in lipid A palmitoylation. This effect was not detected in our previous study (7), probably due to the parallel confounding increase in posttranslational activation of PagP under these conditions. The Rcs phosphorelay system regulates colanic acid synthesis, cell division, growth on surfaces, and motility, all important functions involved in biofilm formation and bacterial physiological adaptation to the biofilm lifestyle (21, 35). Several major and accessory components (RcsF, RcsC, RcsD, and RcsA) are involved in RcsB phosphorylation and subsequent regulation of a subset of Rcs-regulated genes (36). Here we show that RcsB regulates *pagP* expression independently of major contributions of other Rcs components and of its phosphorylation. Consistently, we discovered that the auxiliary transcriptional regulator GadE, one of the 4 transcriptional regulators known to interact with the nonphosphorylated form of RcsB (MatA, BglJ, DtcR, and GadE) (24, 26), contributes to RcsB-dependent regulation of *pagP* induction. GadE is expressed under low-pH conditions (30, 37), whereas RcsB can be activated by several stress conditions, including membrane perturbations (38, 39), osmotic stress (20), and growth on solid surfaces (40). Since the RcsB-BglJ complex specifically regulates at least 10 genes, 8 of which correspond to unknown or predicted proteins (41), this suggests that, in addition to *pagP*, other genes regulated by the RcsB-GadE complex remain to be discovered, and their discovery could lead to identification of novel biofilm properties. Although the RcsB-GadE complex was reported to regulate only *gadA/BC* genes (26), it is worth noting that the glutamate decarboxylase genes *gadA* and *gadB* are, like *pagP*, under the negative control of H-NS (Fig. 7) and were shown to be induced in biofilm (34, 42, 43).

Our results suggest that, in addition to *pagP*, conditions prevailing within biofilm could specifically trigger the expression of other RcsB-regulated and H-NS-regulated genes. Consistently, the expression of RcsB-regulated genes *cpsB* and *rprA*, or of RcsB/GadE-regulated genes *gadA* and *gadB*, showed significant induction under biofilm conditions (see Fig. S9 in the supplemental material) (44, 45). Hence, RcsB could play a central role in H-NS antisilencing and could enable the expression of *rsc* genes regulated both through activation of the phosphorelay cascade and through activation of RcsB complexes formed with auxiliary regulators. Consistently, among genes positively regulated by the RcsB-BglJ complex, *leuO* is an anti-H-NS factor (46, 47) that could, when expressed, contribute to global antagonism of H-NS-mediated repression. However, it has been shown that all RcsB auxiliary regulators, like some of their targets, are repressed by H-NS (48–51), raising the question of how their expression can be activated. Since H-NS preferentially binds to curved and A-T-rich DNA regions (52, 53), alteration of DNA structure under environmental conditions reducing the degree of DNA curvature, such as high temperature or increased osmolarity (54), could lead to H-NS destabilization and derepression of H-NS-repressed genes.

The Rcs system was previously described as being activated by various cues such as LPS or peptidoglycan defects, temperature, or osmotic shock (16). We showed that RcsB-dependent *pagP* expression and increased lipid A palmitoylation can be induced by ionic solutes but not by nonionic compounds such as sucrose or dextran. The mechanisms behind this specificity could involve an osmotic stress response triggered to minimize loss of water and maintain positive turgor pressure (55). In bacteria subjected to salt stress, one key mechanism of bacterial osmoadaptation lies in rapid K⁺ uptake through different K⁺ sensory and transport systems (56). However, deletion of major components of the *E. coli* potassium transporters or mechanosensitive channels had no impact on *pagP* transcriptional induction in biofilm. Further investigations will determine the contribution of additional ion transporters to biofilm-associated *pagP* induction.

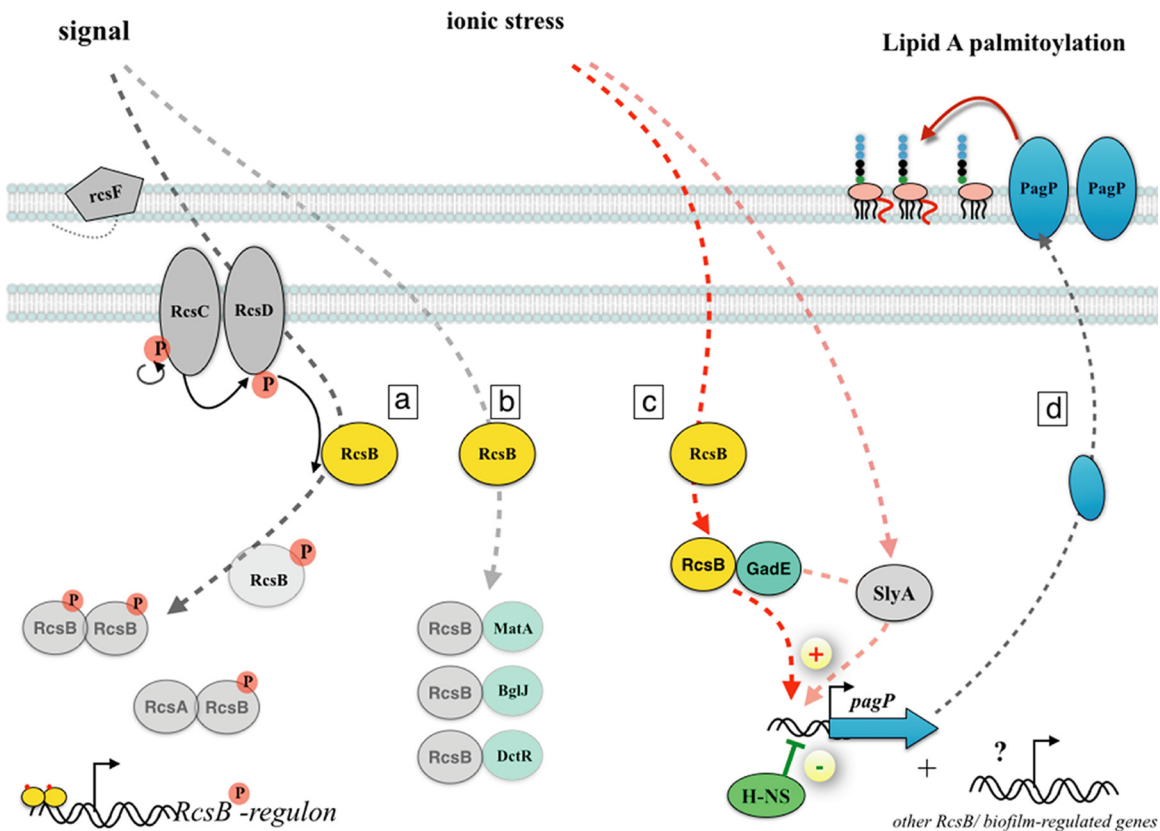


FIG 7 Proposed model for biofilm transcriptional regulation of *pagP* expression. The Rcs system is a two-component signal transduction system that responds to various environmental signals. (Pathway a) Proteins (RcsA, RcsC, RcsD, and RcsB) involved in phosphorylation and dephosphorylation of response regulator RcsB are not required for *pagP* biofilm induction. (Pathway b) RcsB regulation is also independent of MatA, BglJ, and DctR, known to interact with the nonphosphorylated form of RcsB. (Pathway c) In response to ionic stress, RcsB and GadE could form a complex positively regulating *pagP* expression in a manner at least partially independent of the anti-H-NS factor SlyA. (Pathway d) This countersilencing mechanism leads to *pagP* biofilm induction, as well as to an increased level of lipid A palmitoylation, and could potentially lead to expression of additional biofilm-regulated genes.

Consistently with NaCl-dependent and KCl-dependent induction of *pagP*, we detected higher osmolarity in the biofilm environment, suggesting that increased osmolarity could be the signal triggering RcsB-dependent induction within biofilms. In *Dickeya dadantii*, the level of osmoregulated periplasmic glucans (OPGs), a periplasmic component of the cell envelope, was shown to modulate the activity of the Rcs system. While accumulation of OPGs in the periplasm inhibits the Rcs pathway under conditions of low osmolarity, in biofilms, which are characterized by higher osmolarity, absence of OPGs could serve as a signal activating the Rcs pathway and leading to increased expression of *pagP* (57). While the origin of this increased osmolarity is not known, it might be explained by accumulation of metabolic wastes, cell lysis, or production of matrix components that characterize the biofilm mode of growth. Increased osmolarity could therefore be a general feature regulating other biofilm-specific responses beyond lipid A modifications. Interestingly, several examples of membrane modifications in response to osmotic stress have been described, including modification of the LPS structure in *Rhizobium meliloti* (58) and the increase in the amount of saturated fatty acids in *Pseudomonas putida* colonies, contributing to increased membrane rigidity (59). While PagP-dependent palmitoylation was also shown to contribute to membrane rigidity (60), we speculate that this phenotype is part of a more global mechanism for adaptation to life under conditions of increased osmolarity and contributes to maintaining cell homeostasis by limiting loss of water.

In Fig. 7 we present a model for the *pagP* transcriptional regulation in biofilm described in this study. We propose that the biofilm environment, characterized by

increased osmolarity, triggers activation of RcsB and its interaction with the auxiliary regulator GadE. Formation of a RcsB-GadE complex, occurring independently of RcsB phosphorylation, leads to positive regulation of *pagP* expression. Our results further suggest that this new regulatory pathway could be at least partially independent of the previously described anti-H-NS SlyA factor.

The analyses presented in this study were performed on a biofilm population. The observed increased lipid A palmitoylation could be interpreted as a general feature of all biofilm cells. However, biofilm environments are highly heterogeneous, and, depending on their localization within the biofilm, bacteria encounter different stress conditions (27). It is therefore possible that the level of lipid A palmitoylation that we observe in biofilm reflects an average level between those of highly palmitoylated and nonpalmitoylated cells which, in addition, could result either from increased *pagP* expression or from activation of the basal level of the dormant enzyme. The resulting heterogeneity among biofilm cells could represent an adaptive advantage ensuring population survival in hostile environments. Consistently, our previous *in vivo* analyses showed that lipid A palmitoylation increased biofilm bacterial survival by reducing the host inflammatory response (7). However, while the presence of highly palmitoylated lipid A at the surface of the biofilm could represent a defensive barrier preventing biofilm eradication by the host immune system, our results suggest instead that the conditions required for *pagP* induction are more closely correlated with deeper biofilm layers in which accumulation of metabolites and other wastes could increase external osmolarity. Further localization studies with oxygen-insensitive reporters or imaging mass spectrometry will help clarify the correlation between induction of *pagP* and the physicochemical cues present in the biofilm environment.

MATERIALS AND METHODS

Bacterial strains and growth conditions. Bacterial strains and plasmids used in this study are described in Table S1 in the supplemental material. Antibiotics (concentrations) were used as follows: kanamycin (50 $\mu\text{g/ml}$); chloramphenicol (25 $\mu\text{g/ml}$); ampicillin (100 $\mu\text{g/ml}$); zeocin (50 $\mu\text{g/ml}$); and tetracycline (7.5 $\mu\text{g/ml}$). When specified, isopropyl- β -D-thiogalactopyranoside (IPTG) was used to induce gene expression at the following concentrations: for planktonic cultures, 0.1 mM; for biofilms, 0.05 mM.

Biofilm growth in continuous-flow microfermentors. Biofilm formation on an internal glass slide stand in continuous-flow microfermentors was performed as previously described (18). Inoculation was performed by dipping the glass spatula for 5 min in a culture adjusted to an optical density at 600 nm (OD_{600}) of 2 from overnight bacterial cultures grown in M63B1 minimal medium supplemented with 0.4% glucose and the appropriate antibiotics. The spatula was then reintroduced into the microfermentor, and biofilm culture was performed at 37°C in M63B1 with glucose. Biofilm biomass produced at different time points was rapidly resuspended in 10 ml of fresh M63B1 medium (without glucose), and biofilm bacteria were used for LPS analysis of measures of β -galactosidase activity.

Planktonic growth. Planktonic cultures were also grown in M63B1 medium supplemented with 0.4% glucose at 37°C.

Strain construction. The *E. coli* deletion mutants used in these studies either originated from *E. coli* K-12 BW25113 wild-type and isogenic mutant strains from the Keio collection (61) or were derived by λ -red linear DNA gene inactivation using pKOBEG plasmids or derivatives (62, 63). To construct *pagP-lacZ* derivatives, mutations were transferred by P1vir phage transduction to BW25113 *pagP-lacZ*, BW25113 F⁺ *pagP-lacZ*, MG1655 *pagP-lacZ*, or MG1655 F⁺ *pagP-lacZ* strains. When required, kanamycin resistance markers flanked by two FLP recombination target (FRT) sites were removed using FLP recombinase (64).

LPS analysis by Tricine SDS-PAGE. A total of 10⁸ bacteria were pelleted and resuspended in 100 μl of lysing buffer (Bio-Rad) containing 1% SDS, 20% glycerol, 100 mM Tris (pH 6.8), and Coomassie blue G-250. Lysates were heated at 100°C for 10 min; proteinase K was then added at 1 mg/ml, and the reaction mixture was incubated at 37°C for 1 h. These samples (4 μl) were electrophoresed in a Tricine SDS-PAGE system, which improves resolution of the low-molecular-weight LPS band, using 4% stacking gel and 20% separating gel (65). LPS was then visualized by a periodate-silver staining method adapted from a previous study (66). Gels were immersed in fixing solution (30% ethanol, 10% acetic acid) for 1 h, washed in water three times for 5 min each time, oxidized in 0.7% periodic acid for 10 min, and washed in water three times for 5 min each time. Gels were then immersed for 1 min in 0.02% thiosulfate pentahydrate, rinsed quickly in water, and stained in 25 mM silver nitrate for 10 min. After a 15 s wash in water, gels were developed in 3.5% potassium carbonate–0.01% formaldehyde. Development was stopped for 30 min in 4% Tris base–2% acetic acid.

Direct lipid A isolation from bacterial cells. Lipid A was isolated directly by hydrolysis of bacterial cells as described previously (67, 68). Briefly, 5 mg of lyophilized bacterial cells was suspended in 100 μl of a mixture of isobutyric acid–1 M ammonium hydroxide (5:3 [vol/vol]) and kept for 1.5 h at 100°C in a screw-cap test tube in a Thermomixer system. The suspension was cooled in ice water and centrifuged (2,000 \times g, 5 min). The recovered supernatant was diluted with 2 volumes of water and lyophilized. The

sample was then washed once with 100 μ l of methanol (by centrifugation at $2,000 \times g$ for 5 min). Finally, lipid A was extracted from the pellet in 50 μ l of a mixture of chloroform, methanol, and water (3:1.5:0.25 [vol/vol/vol]).

MALDI-TOF MS analysis. LPS samples were dispersed in water at 1 μ g/ μ l. Lipid A extracts in chloroform-methanol-water were used directly in this mixture of solvents. In both cases, a volume of a few microliters of sample solution was desalted with a few grains of ion exchange resin (Dowex 50W-8 [H⁺]). Aliquots of 0.5 to 1 μ l of the solution were deposited on the target, and the spot was then overlaid with matrix solution and left to dry. Dihydroxybenzoic acid (DHB) (Sigma-Aldrich) or 5-chloro-2-mercaptobenzothiazole (CMBT) was used as the matrix. It was dissolved at 10 mg/ml in 0.1 M citric acid solution in the same solvents as were used for the analytes (69). Different analyte/matrix ratios (1:2, 1:1, and 2:1 [vol/vol]) were tested to obtain the best spectra. Negative- and positive-ion mass spectra were recorded on a PerSeptive Voyager-DE short tandem repeat (STR) time of flight mass spectrometer (Applied Biosystems) in the linear mode with delayed extraction. The ion-accelerating voltage was set at -20 kV, and the extraction delay time was adjusted to obtain the best resolution and signal-to-noise ratio. LPS analyses were performed by LPS-BioSciences (IGM, Orsay, France).

β -Galactosidase activity assay. To determine the β -galactosidase enzyme activity of strains carrying a transcriptional *lacZ* fusion, bacteria were grown in M63B1 minimal medium with glucose at 37°C for the time indicated for each experiment. The enzyme activity was assayed at least in triplicate for each strain under each condition as previously described (70), and the results are expressed in Miller units.

Screening for conditions impacting lipid A palmitoylation and *pagP* expression. To evaluate the roles of different physicochemical stresses in *pagP* expression and lipid A palmitoylation, we proceeded as follows.

(i) Test of osmotic agents. Planktonic cultures in M63B1 minimal medium supplemented with 0.4% glucose and the appropriate antibiotics were started at an optical density at 600 nm (OD_{600}) of 0.05 from overnight precultures performed in LB. Bacteria were incubated at 37°C until they reached an optical density at 600 nm (OD_{600}) approaching 0.5. The tested chemical was then added to the cultures, and β -galactosidase activity was measured after 1 h of incubation. NaCl, KCl, sucrose, and dextran were used to induce osmotic stress. The listed compounds (concentrations) were used as follows: NaCl (0.6 M and 0.8 M); KCl (0.5 M); 17.5-kDa and 70-kDa dextran (10%); and sucrose (20%).

(ii) Growth at different pH levels. Starting from a preculture performed in LB, bacteria were grown overnight in M63B1 minimal medium supplemented with 0.4% glucose and adjusted at different pH levels (pH 5.2, 6, 6.5, 7, and 7.4). Medium pH was buffered using 3-morpholinopropane-1-sulfonic acid (MOPS) or 2-(N-morpholino)ethane sulfonic acid (MES) at 100 mM. β -Galactosidase activity was measured.

Osmolarity and pH measurements. To determine the osmolarity level and the pH in planktonic and biofilm cultures, we proceeded as follows.

(i) Sample preparations. For biofilm measurements, the biofilm biomass was recovered from the glass spatula using a cell scraper to minimize dilution of the biofilm supernatant. The biofilm sample was centrifuged and filtered to eliminate residual bacteria. For planktonic cultures, an aliquot of the bacterial suspension was centrifuged and filtered.

Samples were recovered from at least 3 independent biofilm and planktonic cultures and 3 different time points (24 h, 48 h, and 72 h).

(ii) Measures. Osmolarity measurements were performed on 100- μ l samples using a freezing-point osmometer and repeated 3 times. pH was assessed using pH strips (Sigma P-4536) with a unit resolution of 0.5 pH.

Statistical analysis. Statistical analyses were performed using one-way analysis of variance (ANOVA) and the Bonferroni multiple-comparison test with Prism 5.0 for Mac OS X (GraphPad Software, Inc.). Each experiment was performed at least 3 times. Statistical significance is indicated as follows: *, $P = <0.05$; **, $P = <0.01$; ***, $P = <0.001$.

SUPPLEMENTAL MATERIAL

Supplemental material for this article may be found at <https://doi.org/10.1128/mBio.01415-18>.

FIG S1, PDF file, 0.1 MB.

FIG S2, PDF file, 0.1 MB.

FIG S3, PDF file, 0.1 MB.

FIG S4, PDF file, 0.1 MB.

FIG S5, PDF file, 0.2 MB.

FIG S6, PDF file, 0.1 MB.

FIG S7, PDF file, 0.1 MB.

FIG S8, PDF file, 0.1 MB.

FIG S9, PDF file, 0.1 MB.

TABLE S1, PDF file, 0.1 MB.

ACKNOWLEDGMENTS

We thank Nadim Majdalani, Emmanuelle Bouveret, Daniela De Biase, and David Clarke for helpful discussions and critical reading of the manuscript. We are also

grateful to Emmanuelle Bouveret, Nadim Majdalani, and Inigo Lasa for generously providing some of the strains and plasmids used in this study and to Nicolas Desprat for his help in osmolarity measurements. We also thank Alexei Novikov and Martine Caroff (LPS-Biosciences, IGM, Orsay, France) for their help in LPS analysis.

This work was supported by an Institut Pasteur grant and by the French government's Investissement d'Avenir Program, Laboratoire d'Excellence "Integrative Biology of Emerging Infectious Diseases" (grant ANR-10-LABX-62-IBEID), and EU Horizon 2020 Rafts4Biotech grant 720776 (to J.-M.G. and M.S.) and by the Fondation pour la Recherche Médicale (grant DEQ20180339185).

M.S. performed experiments; M.S., C.B., and J.-M.G. designed experiments and analyzed data. M.S. and J.-M.G. wrote the manuscript.

REFERENCES

- Serra DO, Hengge R. 2014. Stress responses go three dimensional—the spatial order of physiological differentiation in bacterial macrocolony biofilms. *Environ Microbiol* 16:1455–1471. <https://doi.org/10.1111/1462-2920.12483>.
- Bernier SP, Lebeaux D, DeFrancesco AS, Valomon A, Soubigou G, Coppée JY, Ghigo JM, Beloin C. 2013. Starvation, together with the SOS response, mediates high biofilm-specific tolerance to the fluoroquinolone ofloxacin. *PLoS Genet* 9:e1003144. <https://doi.org/10.1371/journal.pgen.1003144>.
- Nguyen D, Joshi-Datar A, Lepine F, Bauerle E, Olakanmi O, Beer K, McKay G, Siehnel R, Schafhauser J, Wang Y, Britigan BE, Singh PK. 2011. Active starvation responses mediate antibiotic tolerance in biofilms and nutrient-limited bacteria. *Science* 334:982–986. <https://doi.org/10.1126/science.1211037>.
- Lebeaux D, Ghigo JM, Beloin C. 2014. Biofilm-related infections: bridging the gap between clinical management and fundamental aspects of recalcitrance toward antibiotics. *Microbiol Mol Biol Rev* 78:510–543. <https://doi.org/10.1128/MMBR.00013-14>.
- Pamp SJ, Gjermansen M, Johansen HK, Tolker-Nielsen T. 2008. Tolerance to the antimicrobial peptide colistin in *Pseudomonas aeruginosa* biofilms is linked to metabolically active cells, and depends on the *pmr* and *mexAB-oprM* genes. *Mol Microbiol* 68:223–240. <https://doi.org/10.1111/j.1365-2958.2008.06152.x>.
- Penterman J, Nguyen D, Anderson E, Staudinger BJ, Greenberg EP, Lam JS, Singh PK. 2014. Rapid evolution of culture-impaired bacteria during adaptation to biofilm growth. *Cell Rep* 6:293–300. <https://doi.org/10.1016/j.celrep.2013.12.019>.
- Chalabaev S, Chauhan A, Novikov A, Iyer P, Szczesny M, Beloin C, Caroff M, Ghigo JM. 2014. Biofilms formed by gram-negative bacteria undergo increased lipid A palmitoylation, enhancing in vivo survival. *mBio* 5:e01116-14. <https://doi.org/10.1128/mBio.01116-14>.
- Bishop RE, Gibbons HS, Guina T, Trent MS, Miller SI, Raetz CR. 2000. Transfer of palmitate from phospholipids to lipid A in outer membranes of gram-negative bacteria. *EMBO J* 19:5071–5080. <https://doi.org/10.1093/emboj/19.19.5071>.
- Bishop RE. 2005. The lipid A palmitoyltransferase PagP: molecular mechanisms and role in bacterial pathogenesis. *Mol Microbiol* 57:900–912. <https://doi.org/10.1111/j.1365-2958.2005.04711.x>.
- Zhou Z, Lin S, Cotter RJ, Raetz CR. 1999. Lipid A modifications characteristic of *Salmonella typhimurium* are induced by NH₄VO₃ in *Escherichia coli* K12. Detection of 4-amino-4-deoxy-L-arabinose, phosphoethanolamine and palmitate. *J Biol Chem* 274:18503–18514. <https://doi.org/10.1074/jbc.274.26.18503>.
- Eguchi Y, Okada T, Minagawa S, Oshima T, Mori H, Yamamoto K, Ishihama A, Utsumi R. 2004. Signal transduction cascade between EvgA/EvgS and PhoP/PhoQ two-component systems of *Escherichia coli*. *J Bacteriol* 186:3006–3014. <https://doi.org/10.1128/JB.186.10.3006-3014.2004>.
- Jia W, El Zoeiby A, Petruzzello TN, Jayabalasingham B, Seyedirashdi S, Bishop RE. 2004. Lipid trafficking controls endotoxin acylation in outer membranes of *Escherichia coli*. *J Biol Chem* 279:44966–44975. <https://doi.org/10.1074/jbc.M404963200>.
- Bishop RE. 2008. Structural biology of membrane-intrinsic beta-barrel enzymes: sentinels of the bacterial outer membrane. *Biochim Biophys Acta* 1778:1881–1896. <https://doi.org/10.1016/j.bbame.2007.07.021>.
- Majdalani N, Hernandez D, Gottesman S. 2002. Regulation and mode of action of the second small RNA activator of RpoS translation, RprA. *Mol Microbiol* 46:813–826. <https://doi.org/10.1046/j.1365-2958.2002.03203.x>.
- Guo XP, Sun YC. 2017. New insights into the non-orthodox two component Rcs phosphorelay system. *Front Microbiol* 8:2014. <https://doi.org/10.3389/fmicb.2017.02014>.
- Majdalani N, Gottesman S. 2005. The Rcs phosphorelay: a complex signal transduction system. *Annu Rev Microbiol* 59:379–405. <https://doi.org/10.1146/annurev.micro.59.050405.101230>.
- Belden WJ, Miller SI. 1994. Further characterization of the PhoP regulon: identification of new PhoP-activated virulence loci. *Infect Immun* 62:5095–5101.
- Ghigo JM. 2001. Natural conjugative plasmids induce bacterial biofilm development. *Nature* 412:442–445. <https://doi.org/10.1038/35086581>.
- Laubacher ME, Ades SE. 2008. The Rcs phosphorelay is a cell envelope stress response activated by peptidoglycan stress and contributes to intrinsic antibiotic resistance. *J Bacteriol* 190:2065–2074. <https://doi.org/10.1128/JB.01740-07>.
- Sledjeski DD, Gottesman S. 1996. Osmotic shock induction of capsule synthesis in *Escherichia coli* K-12. *J Bacteriol* 178:1204–1206. <https://doi.org/10.1128/jb.178.4.1204-1206.1996>.
- Majdalani N, Heck M, Stout V, Gottesman S. 2005. Role of RcsF in signaling to the Rcs phosphorelay pathway in *Escherichia coli*. *J Bacteriol* 187:6770–6778. <https://doi.org/10.1128/JB.187.19.6770-6778.2005>.
- Fredericks CE, Shibata S, Aizawa S, Reimann SA, Wolfe AJ. 2006. Acetyl phosphate-sensitive regulation of flagellar biogenesis and capsular biosynthesis depends on the Rcs phosphorelay. *Mol Microbiol* 61:734–747. <https://doi.org/10.1111/j.1365-2958.2006.05260.x>.
- Hu Li, Chi BK, Kuhn ML, Filippova EV, Walker-Peddakotla AJ, Bäsell K, Becher D, Anderson WF, Antelmann H, Wolfe AJ. 2013. Acetylation of the response regulator RcsB controls transcription from a small RNA promoter. *J Bacteriol* 195:4174–4186. <https://doi.org/10.1128/JB.00383-13>.
- Pannen D, Fabisch M, Gausling L, Schnetz K. 2016. Interaction of the RcsB response regulator with auxiliary transcription regulators in *Escherichia coli*. *J Biol Chem* 291:2357–2370. <https://doi.org/10.1074/jbc.M115.696815>.
- Venkatesh GR, Kembou Koungni FC, Paukner A, Stratmann T, Blissenbach B, Schnetz K. 2010. BglJ-RcsB heterodimers relieve repression of the *Escherichia coli* bgl operon by H-NS. *J Bacteriol* 192:6456–6464. <https://doi.org/10.1128/JB.00807-10>.
- Castanié-Cornet MP, Cam K, Bastiat B, Cros A, Bordes P, Gutierrez C. 2010. Acid stress response in *Escherichia coli*: mechanism of regulation of *gadA* transcription by RcsB and GadE. *Nucleic Acids Res* 38:3546–3554. <https://doi.org/10.1093/nar/gkq097>.
- Stewart PS, Franklin MJ. 2008. Physiological heterogeneity in biofilms. *Nat Rev Microbiol* 6:199–210. <https://doi.org/10.1038/nrmicro1838>.
- Laimins LA, Rhoads DB, Epstein W. 1981. Osmotic control of *kdp* operon expression in *Escherichia coli*. *Proc Natl Acad Sci U S A* 78:464–468. <https://doi.org/10.1073/pnas.78.1.464>.
- Perozo E, Cortes DM, Sompornpisut P, Kloda A, Martinac B. 2002. Open channel structure of MscL and the gating mechanism of mechanosensitive channels. *Nature* 418:942–948. <https://doi.org/10.1038/nature00992>.
- Ma Z, Gong S, Richard H, Tucker DL, Conway T, Foster JW. 2003. GadE (YhiE) activates glutamate decarboxylase-dependent acid resistance in *Escherichia coli* K-12. *Mol Microbiol* 49:1309–1320. <https://doi.org/10.1046/j.1365-2958.2003.03633.x>.
- Raetz CR, Whitfield C. 2002. Lipopolysaccharide endotoxins. *Annu Rev*

- Biochem 71:635–700. <https://doi.org/10.1146/annurev.biochem.71.110601.135414>.
32. Smith AE, Kim SH, Liu F, Jia W, Vinogradov E, Gyles CL, Bishop RE. 2008. PagP activation in the outer membrane triggers R3 core oligosaccharide truncation in the cytoplasm of *Escherichia coli* O157:H7. *J Biol Chem* 283:4332–4343. <https://doi.org/10.1074/jbc.M708163200>.
 33. Hwang PM, Choy WY, Lo EI, Chen L, Forman-Kay JD, Raetz CR, Privé GG, Bishop RE, Kay LE. 2002. Solution structure and dynamics of the outer membrane enzyme PagP by NMR. *Proc Natl Acad Sci U S A* 99:13560–13565. <https://doi.org/10.1073/pnas.212344499>.
 34. Beloin C, Valle J, Latour-Lambert P, Faure P, Kzreminski M, Balestrino D, Haagenen JA, Molin S, Prensier G, Arbeille B, Ghigo JM. 2004. Global impact of mature biofilm lifestyle on *Escherichia coli* K-12 gene expression. *Mol Microbiol* 51:659–674. <https://doi.org/10.1046/j.1365-2958.2003.03865.x>.
 35. Majdalani N, Gottesman S. 2007. Genetic dissection of signaling through the Rcs phosphorelay. *Methods Enzymol* 423:349–362. [https://doi.org/10.1016/S0076-6879\(07\)23016-2](https://doi.org/10.1016/S0076-6879(07)23016-2).
 36. Clarke DJ. 2010. The Rcs phosphorelay: more than just a two-component pathway. *Future Microbiol* 5:1173–1184. <https://doi.org/10.2217/fmb.10.83>.
 37. Tucker DL, Tucker N, Conway T. 2002. Gene expression profiling of the pH response in *Escherichia coli*. *J Bacteriol* 184:6551–6558. <https://doi.org/10.1128/JB.184.23.6551-6558.2002>.
 38. Ebel W, Vaughn GJ, Peters HK III, Trempy JE. 1997. Inactivation of mdoH leads to increased expression of colanic acid capsular polysaccharide in *Escherichia coli*. *J Bacteriol* 179:6858–6861. <https://doi.org/10.1128/jb.179.21.6858-6861.1997>.
 39. Castanié-Cornet MP, Cam K, Jacq A. 2006. RcsF is an outer membrane lipoprotein involved in the RcsCDB phosphorelay signaling pathway in *Escherichia coli*. *J Bacteriol* 188:4264–4270. <https://doi.org/10.1128/JB.00004-06>.
 40. Ferrières L, Clarke DJ. 2003. The RcsC sensor kinase is required for normal biofilm formation in *Escherichia coli* K-12 and controls the expression of a regulon in response to growth on a solid surface. *Mol Microbiol* 50:1665–1682. <https://doi.org/10.1046/j.1365-2958.2003.03815.x>.
 41. Salscheider SL, Jahn A, Schnetz K. 2014. Transcriptional regulation by BglJ-RcsB, a pleiotropic heteromeric activator in *Escherichia coli*. *Nucleic Acids Res* 42:2999–3008. <https://doi.org/10.1093/nar/gkt1298>.
 42. Giangrossi M, Zattoni S, Tramonti A, De Biase D, Falconi M. 2005. Antagonistic role of H-NS and GadX in the regulation of the glutamate decarboxylase-dependent acid resistance system in *Escherichia coli*. *J Biol Chem* 280:21498–21505. <https://doi.org/10.1074/jbc.M413255200>.
 43. Schembri MA, Kjaergaard K, Klemm P. 2003. Global gene expression in *Escherichia coli* biofilms. *Mol Microbiol* 48:253–267. <https://doi.org/10.1046/j.1365-2958.2003.03432.x>.
 44. Gottesman S, Trisler P, Torres-Cabassa A. 1985. Regulation of capsular polysaccharide synthesis in *Escherichia coli* K-12: characterization of three regulatory genes. *J Bacteriol* 162:1111–1119.
 45. Hommais F, Krin E, Laurent-Winter C, Soutourina O, Malpertuy A, Le Caer JP, Danchin A, Bertin P. 2001. Large-scale monitoring of pleiotropic regulation of gene expression by the prokaryotic nucleoid-associated protein, H-NS. *Mol Microbiol* 40:20–36. <https://doi.org/10.1046/j.1365-2958.2001.02358.x>.
 46. Ueguchi C, Ohta T, Seto C, Suzuki T, Mizuno T. 1998. The leuO gene product has a latent ability to relieve bgl silencing in *Escherichia coli*. *J Bacteriol* 180:190–193.
 47. Shimada T, Bridier A, Briandet R, Ishihama A. 2011. Novel roles of LeuO in transcription regulation of *E. coli* genome: antagonistic interplay with the universal silencer H-NS. *Mol Microbiol* 82:378–397. <https://doi.org/10.1111/j.1365-2958.2011.07818.x>.
 48. Lehti TA, Heikkinen J, Korhonen TK, Westerlund-Wikström B. 2012. The response regulator RcsB activates expression of Mat fimbriae in meningitic *Escherichia coli*. *J Bacteriol* 194:3475–3485. <https://doi.org/10.1128/JB.06596-11>.
 49. Sledjeski D, Gottesman S. 1995. A small RNA acts as an antisilencer of the H-NS-silenced rcsA gene of *Escherichia coli*. *Proc Natl Acad Sci U S A* 92:2003–2007. <https://doi.org/10.1073/pnas.92.6.2003>.
 50. Stratmann T, Madhusudan S, Schnetz K. 2008. Regulation of the yjjQ-bglJ operon, encoding LuxR-type transcription factors, and the divergent yjjP gene by H-NS and LeuO. *J Bacteriol* 190:926–935. <https://doi.org/10.1128/JB.01447-07>.
 51. Sayed AK, Foster JW. 2009. A 750 bp sensory integration region directs global control of the *Escherichia coli* GadE acid resistance regulator. *Mol Microbiol* 71:1435–1450. <https://doi.org/10.1111/j.1365-2958.2009.06614.x>.
 52. Dame RT, Wyman C, Goosen N. 2001. Structural basis for preferential binding of H-NS to curved DNA. *Biochimie* 83:231–234. [https://doi.org/10.1016/S0300-9084\(00\)01213-X](https://doi.org/10.1016/S0300-9084(00)01213-X).
 53. Yamada H, Muramatsu S, Mizuno T. 1990. An *Escherichia coli* protein that preferentially binds to sharply curved DNA. *J Biochem* 108:420–425. <https://doi.org/10.1093/oxfordjournals.jbchem.a123216>.
 54. Amit R, Oppenheim AB, Stavans J. 2003. Increased bending rigidity of single DNA molecules by H-NS, a temperature and osmolarity sensor. *Biophys J* 84:2467–2473. [https://doi.org/10.1016/S0006-3495\(03\)75051-6](https://doi.org/10.1016/S0006-3495(03)75051-6).
 55. Sleator RD, Hill C. 2002. Bacterial osmoadaptation: the role of osmolytes in bacterial stress and virulence. *FEMS Microbiol Rev* 26:49–71. <https://doi.org/10.1111/j.1574-6976.2002.tb00598.x>.
 56. Chang JH, Coleman SM, Schellenberg-Beaver T. 2014. Differential effects of sucrose or NaCl osmotic shock on β -galactosidase activity in *Escherichia coli* BW25993 is dependent on normalization method by total viable count or total protein content. *J Expt Microbiol Immunol* 18:54–59.
 57. Bontemps-Gallo S, Madec E, Dondeyne J, Delrue B, Robbe-Masselot C, Vidal O, Prouvost AF, Boussemart G, Bohin JP, Lacroix JM. 2013. Concentration of osmoregulated periplasmic glucans (OPGs) modulates the activation level of the RcsCD RcsB phosphorelay in the phytopathogen bacteria *Dickeya dadantii*. *Environ Microbiol* 15:881–894. <https://doi.org/10.1111/1462-2920.12054>.
 58. Lloret J, Bolanos L, Lucas MM, Peart JM, Brewin NJ, Bonilla I, Rivilla R. 1995. Ionic stress and osmotic pressure induce different alterations in the lipopolysaccharide of a *Rhizobium meliloti* strain. *Appl Environ Microbiol* 61:3701–3704.
 59. Hachicho N, Birnbaum A, Heipieper HJ. 2017. Osmotic stress in colony and planktonic cells of *Pseudomonas putida* mt-2 revealed significant differences in adaptive response mechanisms. *AMB Express* 7:62. <https://doi.org/10.1186/s13568-017-0371-8>.
 60. Nikaido H. 2003. Molecular basis of bacterial outer membrane permeability revisited. *Microbiol Mol Biol Rev* 67:593–656. <https://doi.org/10.1128/MMBR.67.4.593-656.2003>.
 61. Baba T, Ara T, Hasegawa M, Takai Y, Okumura Y, Baba M, Datsenko KA, Tomita M, Wanner BL, Mori H. 2006. Construction of *Escherichia coli* K-12 in-frame, single-gene knockout mutants: the Keio collection. *Mol Syst Biol* 2:2006.0008. <https://doi.org/10.1038/msb4100050>.
 62. Chaveroche MK, Ghigo JM, d'Enfert C. 2000. A rapid method for efficient gene replacement in the filamentous fungus *Aspergillus nidulans*. *Nucleic Acids Res* 28:E97. <https://doi.org/10.1093/nar/28.22.e97>.
 63. Datsenko KA, Wanner BL. 2000. One-step inactivation of chromosomal genes in *Escherichia coli* K-12 using PCR products. *Proc Natl Acad Sci U S A* 97:6640–6645. <https://doi.org/10.1073/pnas.120163297>.
 64. Cherepanov PP, Wackernagel W. 1995. Gene disruption in *Escherichia coli*: TcR and KmR cassettes with the option of FLP-catalyzed excision of the antibiotic-resistance determinant. *Gene* 158:9–14. [https://doi.org/10.1016/0378-1119\(95\)00193-A](https://doi.org/10.1016/0378-1119(95)00193-A).
 65. Lesse AJ, Campagnari AA, Bittner WE, Apicella MA. 1990. Increased resolution of lipopolysaccharides and lipooligosaccharides utilizing Tricine-sodium dodecyl sulfate-polyacrylamide gel electrophoresis. *J Immunol Methods* 126:109–117. [https://doi.org/10.1016/0022-1759\(90\)90018-Q](https://doi.org/10.1016/0022-1759(90)90018-Q).
 66. Tsai CM, Frasch CE. 1982. A sensitive silver stain for detecting lipopolysaccharides in polyacrylamide gels. *Anal Biochem* 119:115–119. [https://doi.org/10.1016/0003-2697\(82\)90673-X](https://doi.org/10.1016/0003-2697(82)90673-X).
 67. El Hamidi A, Tirsoaga A, Novikov A, Hussein A, Caroff M. 2005. Microextraction of bacterial lipid A: easy and rapid method for mass spectrometric characterization. *J Lipid Res* 46:1773–1778. <https://doi.org/10.1194/jlr.D500014-JLR200>.
 68. Tirsoaga A, El Hamidi A, Perry MB, Caroff M, Novikov A. 2007. A rapid, small-scale procedure for the structural characterization of lipid A applied to *Citrobacter* and *Bordetella* strains: discovery of a new structural element. *J Lipid Res* 48:2419–2427. <https://doi.org/10.1194/jlr.M700193-JLR200>.
 69. Therisod H, Labas V, Caroff M. 2001. Direct microextraction and analysis of rough-type lipopolysaccharides by combined thin-layer chromatography and MALDI mass spectrometry. *Anal Chem* 73:3804–3807. <https://doi.org/10.1021/ac010313s>.
 70. Miller JH. 1992. A short course in bacterial genetics: a laboratory manual and handbook for *Escherichia coli* and related bacteria. Cold Spring Harbor Laboratory Press, Cold Spring Harbor, NY.