



HAL
open science

Molecular signature of the imprintosome complex at the mating-type locus in fission yeast.

Célia Raimondi, Bernd Jagla, Caroline Proux, Hervé Waxin, Serge Gangloff, Benoît Arcangioli

► To cite this version:

Célia Raimondi, Bernd Jagla, Caroline Proux, Hervé Waxin, Serge Gangloff, et al.. Molecular signature of the imprintosome complex at the mating-type locus in fission yeast.. *Microbial Cell* , 2018, 5 (4), pp.169 - 183. 10.15698/mic2018.04.623 . pasteur-01868255

HAL Id: pasteur-01868255

<https://pasteur.hal.science/pasteur-01868255v1>

Submitted on 5 Sep 2018

HAL is a multi-disciplinary open access archive for the deposit and dissemination of scientific research documents, whether they are published or not. The documents may come from teaching and research institutions in France or abroad, or from public or private research centers.

L'archive ouverte pluridisciplinaire **HAL**, est destinée au dépôt et à la diffusion de documents scientifiques de niveau recherche, publiés ou non, émanant des établissements d'enseignement et de recherche français ou étrangers, des laboratoires publics ou privés.



Distributed under a Creative Commons Attribution 4.0 International License

Molecular signature of the imprintosome complex at the mating-type locus in fission yeast

Célia Raimondi¹, Bernd Jagla², Caroline Proux³, Hervé Waxin⁴, Serge Gangloff¹, Benoit Arcangioli^{1,*}

¹ Genomes and Genetics department, Genome Dynamics Unit, UMR 3525 CNRS, Institut Pasteur, 25-28 rue du docteur Roux, Paris, France. Sorbonne Universités, Université Pierre et Marie Curie, Institut de Formation Doctorale, 75252 Paris Cedex 05, France.

² Center for Human Immunology, CRT & Hub de Bioinformatique et Biostatistiques, C3BI, Institut Pasteur, 25-28 rue du Docteur Roux, Paris, France.

³ Genomes and Genetics department, Plate-forme Transcriptome & Epigénome, Biomics, Centre d'Innovation et Recherche Technologique (Citech), Institut Pasteur, 25-28 rue du Docteur Roux, Paris, France.

⁴ Enseignement, Institut Pasteur, 25-28 rue du Docteur Roux, Paris, France.

* Corresponding Author:

Benoit Arcangioli, Genomes and Genetics department, Genome Dynamics Unit, UMR 3525 CNRS, Institut Pasteur, 25-28 rue du docteur Roux, Paris, France. Sorbonne Universités, Université Pierre et Marie Curie, Institut de Formation Doctorale, 75252 Paris Cedex 05, France; Tel: 0033145688454; E-mail: benoit.arcangioli@pasteur.fr

ABSTRACT Genetic and molecular studies have indicated that an epigenetic imprint at *mat1*, the sexual locus of fission yeast, initiates mating type switching. The polar DNA replication of *mat1* generates an imprint on the Watson strand. The process by which the imprint is formed and maintained through the cell cycle remains unclear. To understand better the mechanism of imprint formation and stability, we characterized the recruitment of early players of mating type switching at the *mat1* region. We found that the switch activating protein 1 (Sap1) is preferentially recruited inside the *mat1M* allele on a sequence (*SS13*) that enhances the imprint. The lysine specific demethylases, Lsd1/2, that control the replication fork pause at *MPS1* and the formation of the imprint are specifically drafted inside of *mat1*, regardless of the allele. The CENP-B homolog, Abp1, is highly enriched next to *mat1* but it is not required in the process. Additionally, we established the computational signature of the imprint. Using this signature, we show that both sides of the imprinted molecule are bound by Lsd1/2 and Sap1, suggesting a nucleoprotein protective structure defined as imprintosome.

doi: 10.15698/mic2018.04.623

Received originally: 05.09.2017;

in revised form: 21.12.2017,

Accepted 02.01.2018,

Published 16.01.2018.

Keywords: imprint, mating type switching, epigenetics, replication, Lsd1, Lsd2, Sap1.

Abbreviations:

ChiP-seq – chromatin-immunoprecipitation and whole genome sequencing,
DSB – double-strand break,
HMG – high mobility group,
M – minus,
MT – mating type,
P – plus.

INTRODUCTION

Haploid *Schizosaccharomyces pombe* cells exist as two mating types (MTs), *P* (for plus) and *M* (for minus), that switch during cell divisions. The MT of the cell is determined by the allele (*M* or *P*) expressed at the *mat1* locus on the right arm of chromosome II, 500 kb away from the centromere: *mat1P* in *P* cells and *mat1M* in *M* cells [1, 2]. The *mat1* allele can be replaced efficiently by genetic information contained in one of the two silent donor cassettes *mat2P* and *mat3M* [2-4]. *mat2P* and *mat3M* are located 17 kb and 29 kb centromere-distal to *mat1*, respectively [3, 5], and are maintained in a silent chromatin state preventing their transcription or recombination [5-7]. Two inverted repeats flank the donor region (*IR-L* and *IR-R*) and

act as boundary elements [8, 9]. Additionally, a centromeric repeated sequence located between *mat2P* and *mat3M*, *CEN-H*, promotes the formation of heterochromatin ([10], see Figure 1). A salient feature of the MT loci is that they are flanked by homologous sequences. The H1 homology box (59 bp) is located on the centromere distal (right) side of the cassettes and the H2 homology box (135 bp) on the centromere proximal (left) side [2]. Both sequences are thought to be essential for base pairing during the initiation and resolution steps of the gene conversion process required for MT switching [11, 12]. The H3 box (57 bp) is located to the left of H2 at *mat2* and *mat3* [2], and is not required for MT switching [13].

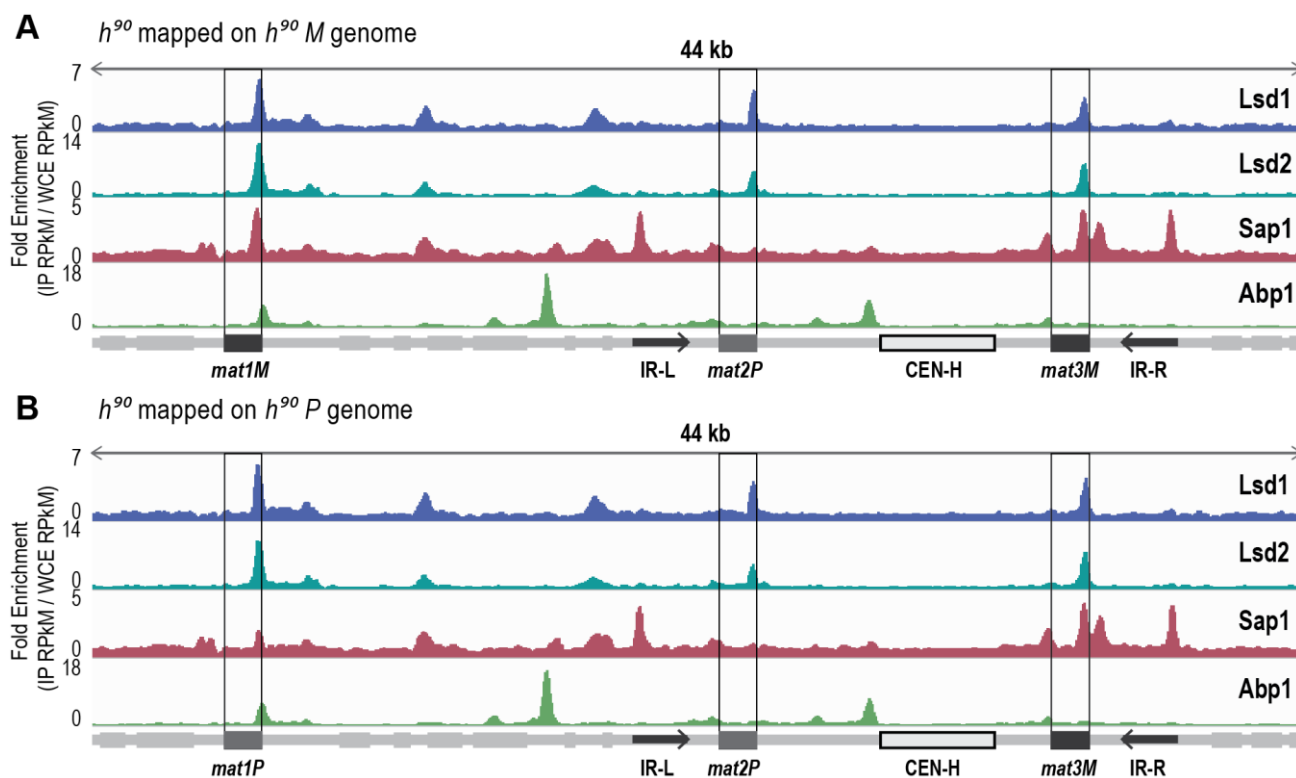


FIGURE 1: Lsd1, Lsd2, Sap1 and Abp1 are recruited to the mating type region. (A) Distribution of normalized enrichments of the Abp1, Lsd1, Lsd2, and Sap1 ChIPs in a h^{90} strain (IP RPKM reads per kilobase million/ WCE RPKM). The sequence used for the alignment is a 44-kb region that contains the MT region with the *M* allele at *mat1*: $h^{90} M$. The 3 *mat* loci are indicated as well as the CEN-H region and the inverted repeats IR-L and IR-R. Light gray boxes show genes present in this region. **(B)** Same than in A) except that the sequence used for the alignment is a 44-kb region that contains the MT region with the *P* allele at *mat1*: $h^{90} P$.

Extensive pedigree analysis at the single-cell level demonstrated that two consecutive divisions are required to produce one switched cell among four related cousins. Fission yeast possesses a remarkable genetically programmed system initiated by a site and DNA strand-specific imprint at the *mat1* locus for changing its MT (reviewed in [14–16]). The first division produces the imprint on one of the sister chromatids at *mat1*, while the second division triggers a double-strand break (DSB) on the imprinted chromatid that initiates MT switching [17].

It was shown that the polarity of DNA replication of *mat1* is instrumental in the establishment and the strand specificity of the imprint [18]. Two sites control the replication polarity at *mat1*, *RTS1* that blocks the fork coming in from the centromere and *MPS1* located near the site of the imprint that pauses the fork coming in from the right. The pausing of the replication fork at *MPS1* is a prerequisite for the formation of the imprint [14]. Thus, the imprint is made on the newly synthesized lagging strand during the resumption of DNA synthesis at *MPS1* [17, 19].

Molecular studies have suggested that the imprint at *mat1* is either a single-strand DNA break [20] or one or two ribonucleotides [21]. The imprint was mapped to the Watson strand corresponding to the neo-synthesized lagging strand, at the junction of the *mat1* allele and the H1 homology box [22]. Furthermore, the position of the imprint

is site-specific but sequence-independent [19, 20]. Interestingly, the position of the break on the Watson strand at *mat1* differs by three nucleotides between the *mat1P* and *mat1M* alleles [22], indicating that the position is dictated from within the *mat1M* and *mat1P* sequences. The imprint is protected against DNA repair and remains stable throughout the entire length of the cell cycle to be transiently converted to a polar DSB during the following S-phase [17, 20]. Repair of this break is not random; *mat1P* prefers *mat3M*, and *mat1M* prefers the nearby *mat2P* in 90% of switches. This preference is called directionality of switching [23]. In strains in which the donor sequences are deleted [24], the position and level of the imprint are identical to that in wild type, but the DSB is repaired off the sister [24, 25].

Several *cis*-acting sequences are required for the formation and maintenance of the imprint. The SS2 and SS13 deletions are located within *mat1M*. SS2 is important for the pause and the imprint, whereas SS13 acts as a spacer element that allows efficient imprinting [19]. To the right of *mat1M*, the *Msm1-0* deletion maintains efficient pausing but abolishes the imprint [18, 26]. The Lsd1/2 (Lysine Specific Demethylases) and the Swi1/Swi3 (Switch gene) complexes are necessary for the pause and the subsequent imprint [17, 27, 28]. Lsd1 is part of a complex including Lsd2 as well as Phf1/Phf2, two plant homeodomain finger

proteins [29]. The complex also associates with topoisomerase 2 (Top2), replication factor A (Rfa1) and Sap1 [29], essential proteins with a role in DNA replication. The involvement of Lsd1 in DNA replication and DNA damage response is not new [30], and we showed that Lsd1/2 act redundantly to promote the pause through both their HMG (high mobility group) domain and amine oxidase activity. In addition, the recruitment of Lsd1/2 to *mat1* requires SS2 [27]. Swi1/3 proteins are associated with the replication fork and stabilize it during the pause [28, 31]. Sap1, the Switch Activating Protein 1 is an essential gene that interacts with SAS1, a sequence covered by the *Msmt-O* deletion [32]. Sap1 was also described to play a role in DNA replication [33-36], retrotransposition targeting [37, 38] and chromosomal organization [39, 40]. Finally, Abp1 (ARS Binding Protein 1), a CENP-B (Centromeric Protein B) homolog that antagonizes Sap1 at LTRs (long terminal repeat), is enriched next to *SAS1*, to the right of *mat1M* [35]. Abp1 was proposed to control the directionality of switching by regulating the alternative expression of the *swi2* gene (Switch gene 2) [41-43], important for the spreading of the Swi2/Swi5 recombination-promoting complex on the *mat2/3* region [43].

To advance our understanding of the process of imprint formation and stability, we analyzed by chromatin-immunoprecipitation and whole genome sequencing (ChIP-seq) the recruitment of Abp1, Lsd1, Lsd2, and Sap1 proteins to the *mat1* region. Because the Lsd1/2 complex interacts with a *cis*-acting element located within the MT cassettes and promotes replication pause at *mat1* but not at *mat2P* and *mat3M*, we compared the interactions of the four proteins in the wild-type strain and in two strains containing a deletion of both the *mat2P* and *mat3M* cassettes. Thus, we have established the computational signature of the imprint and propose a model in which Lsd1 and Lsd2 are exclusively recruited to the *mat1* locus.

RESULTS

ChIP-sequencing mapping of Abp1, Lsd1/2 and Sap1 to the *h⁹⁰* mating type region

It has been previously reported that Abp1, Lsd1/2 and Sap1 bind to the *mat1* region [27, 35, 44]. However, several limitations arose from those studies: The strains that were initially used to map Abp1 and Sap1 by ChIP-seq were rearranged in the MT region (*h⁵*), and the length of the reads (30 nucleotides) prevented their unambiguous assignment to *mat1*, 2 or 3 cassettes [35]. Concerning Lsd1/2, whole genome analyses had been achieved by ChIP-chip [45], but no detailed analysis of the MT region was performed. More recently, we mapped Lsd1/2 to *mat1* by ChIP-qPCR [27].

To extend the mapping of these proteins to the entire MT region, we performed ChIP-seq of Abp1, Lsd1/2 and Sap1 on the wild-type and switching proficient *h⁹⁰* strain (Figure 1). To achieve proper mapping, we constructed two reference genomes carrying either the *M* or *P* allele at *mat1* (Figure 1). We found that both Lsd1 and Lsd2 are enriched at the *mat1*, 2 and 3 cassettes, whereas Sap1 was more enriched at the *mat1M* and *mat3M* cassettes than

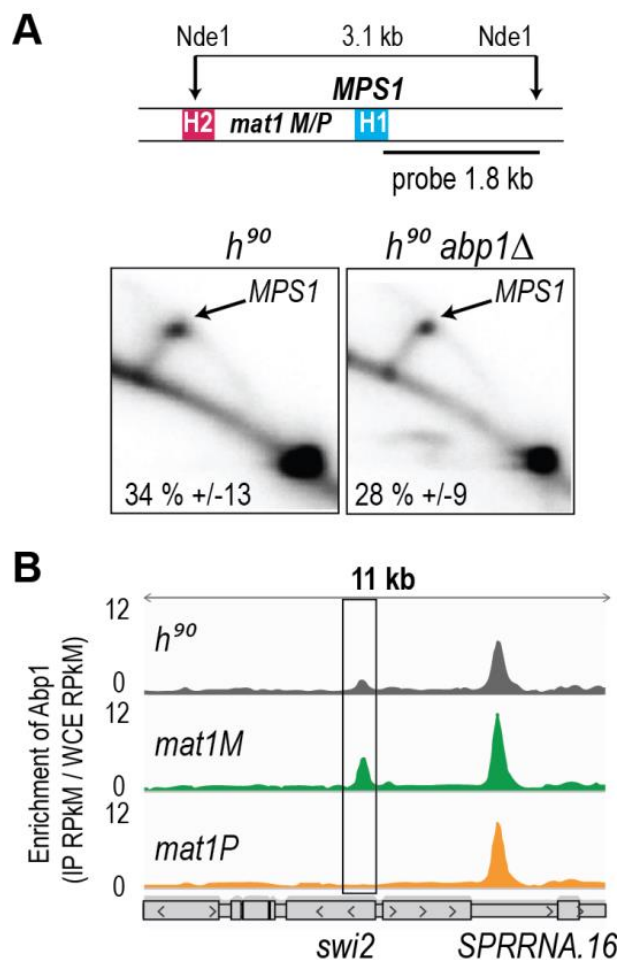
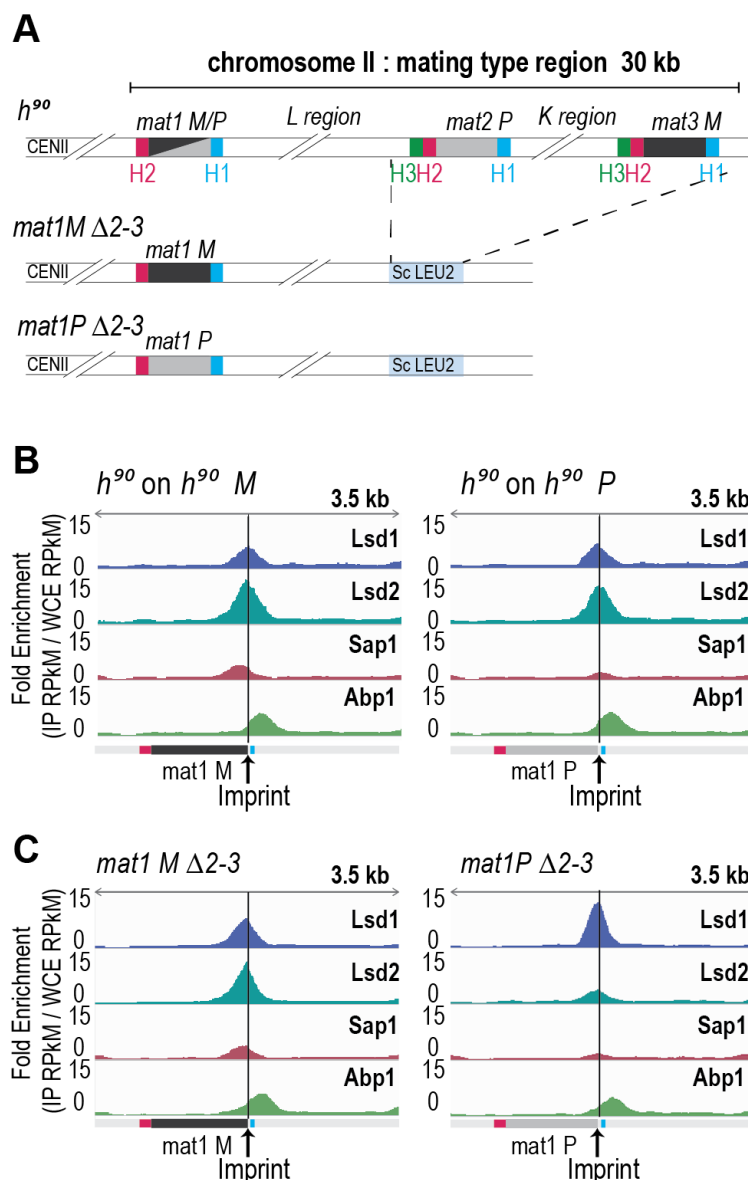


FIGURE 2: Abp1 does not control *MPS1* but is recruited at *swi2* as a function of the mating type. (A) The upper panel indicates the probe and restriction enzyme used for the analysis of the replication intermediates. The lower panel represents the 2D gel analysis of the *MPS1* site at *mat1* in *h⁹⁰* strain and in *h⁹⁰ abp1Δ* strain (n=3). **(B)** Distribution of normalized enrichments of the Abp1 ChIPs at the *swi2* locus (IP RPKM / WCE RPKM) in *h⁹⁰* (gray), *mat1M* stable (green) and *mat1P* stable (orange). Gray boxes indicate the genes in the region and arrows the transcription direction. Loci where Abp1 is enriched are annotated.

mat1P and *mat2P* (Figure 1). Additionally, Sap1 was found to be enriched at the IR-L and IR-R boundary elements [8, 46]. Concerning Abp1, we confirmed that it is indeed enriched at the left border of *CEN-H* [41, 47]. Interestingly, we found that Abp1 is also enriched at the right border of *mat1* in an *h⁹⁰* background. This observation prompted us to investigate the potential involvement of Abp1 in the early steps of MT switching.

Abp1 is recruited to *swi2* when *M* is present at *mat1*

Using 2D gel analysis, we addressed the role of Abp1 in *MPS1* activity. Unlike the situation observed at LTRs, Abp1 is not required for the pausing activity of *MPS1* (Figure 2A), consistent with Abp1 being dispensable for the formation and maintenance of the imprint [41]. Earlier work has



shown that Mc, encoded from the *mat1M* cassette, and Abp1 control the expression of *Swi2*, a key player in the directionality process [42, 43]. Moreover, the recruitment of Mc to *swi2* depends on Abp1 [42]. Reciprocally, using the two stable *M* and *P* strains with deleted donor sequences, we found that the enrichment of Abp1 at *swi2* is restricted to *M* cells, while the enrichment at the neighboring peak is unaffected by the MT of the cells (Figure 2B). The genome wide analysis showed that Abp1 *M*-specific interaction is unique for the *swi2* gene.

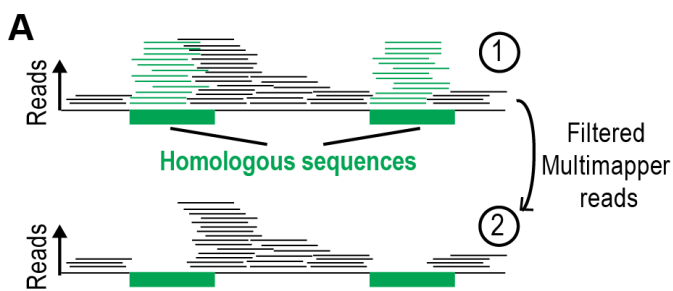
Lsd1/2, Sap1 and Abp1 map at *mat1*

The enrichment positions of the four proteins and the repeated nature of the MT cassettes introduce an ambiguity that cannot be resolved during alignment. To pinpoint the Lsd1/2 and Sap1 binding sites to *mat1*, we used the *mat1M* $\Delta 2-3$ and *mat1P* $\Delta 2-3$ strains deleted for the donor sequences [24] (Figure 3A). Abp1 is enriched outside of the *mat1* locus (to the right of the H1 cassette), and its en-

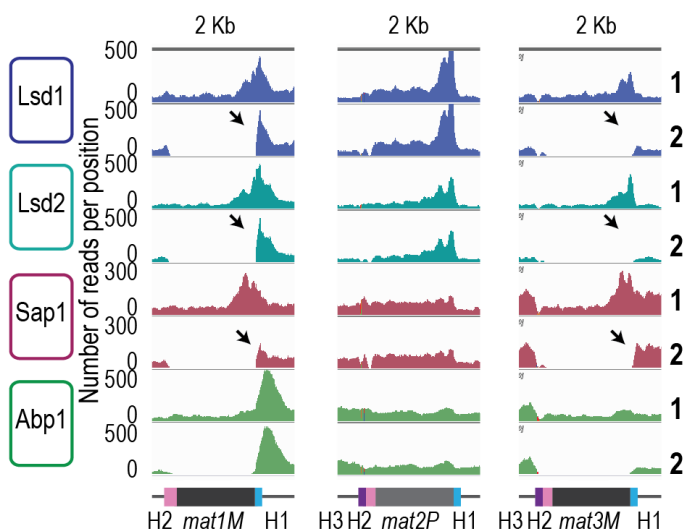
FIGURE 3: Abp1, Lsd1/2 and Sap1 are recruited at *mat1*. (A) Schematic view of the strains used. The stable *mat1M* $\Delta 2-3$ and *mat1P* $\Delta 2-3$ strains as well as the wild type *h⁹⁰* strain are drawn. (B) On the left: distribution of normalized enrichments of the Abp1, Lsd1, Lsd2, and Sap1 ChIPs on the *h⁹⁰* background (IP RPKM / WCE RPKM). The sequence used for the alignment is a 44-kb region that contains the MT region with the *M* allele at *mat1*: *h⁹⁰ M*. Only *mat1M* is shown. On the right: same as at the left, with the *h⁹⁰ P* sequence used for the alignment. Only *mat1P* is shown. (C) Same as in (B) with the *mat1M* $\Delta 2-3$ background on the left and the *mat1P* $\Delta 2-3$ background on the right. The sequence used for the alignments is a 10-kb region containing *mat1M* (for the left panel) or *mat1P* (for the right panel). (B-C) the imprint site is indicated as well as the H2 (pink) and H1 (blue) homology boxes.

richment is independent of the allele present at *mat1* (Figure 3B, 3C). Lsd1 and Lsd2 are enriched both in *mat1M* and *mat1P* with Lsd2 and Sap1 more enriched in *mat1M* (Figure 3B, 3C).

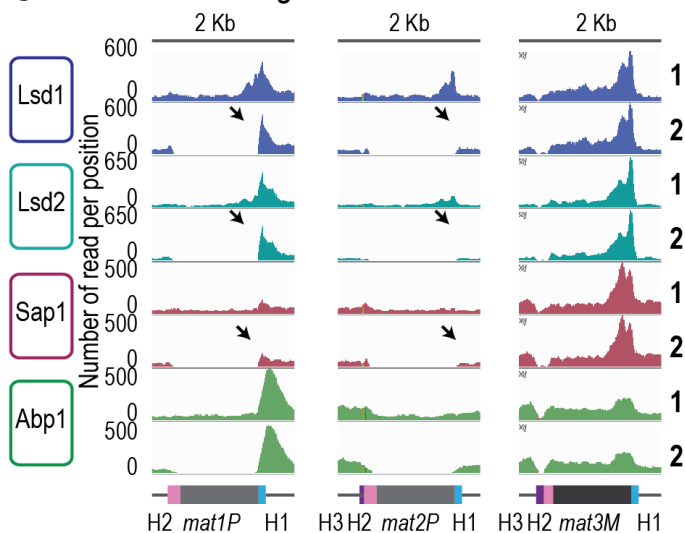
We next analyzed the reads that can only map to a unique position on the reference genome (unique mapper) in a *h⁹⁰* wild type context (Figure 4A), where the donor sequences are present (Supplementary Figure 4). As expected, the highly repetitive sequences of IR-L and IR-R are no longer covered in the two *h⁹⁰* genomes (*h⁹⁰ M* and *h⁹⁰ P*) (Supplementary Figure 4A and 4B). When the *M* allele is at *mat1*, we found no unique mapper reads at *mat1* and *mat3* (Figure 4B). Similarly, when the *P* allele is at *mat1*, no unique mapper reads at *mat1* and *mat2* were found (Figure 4C). Conversely, Abp1 is located outside of the *mat1* cassette in a unique region and can thus be used for alignment. In the case of Lsd1/2, the enriched unique mappers are well maintained at *mat1* (both in the *M* and *P* context) and strongly diminished to nearly background level at



B *h⁹⁰* on *h⁹⁰* *M* genome



C *h⁹⁰* on *h⁹⁰* *P* genome



mat2P and *mat3M* loci, indicating that Lsd1/2 are preferentially recruited at *mat1*. Furthermore, the absence of Lsd1/2 at the two silent loci was confirmed using ChIP-qPCR (Supplementary Figure 4C). The situation for Sap1 is less clear, and its profile suggests that it is recruited to *M* but poorly to *P*. This hints that Sap1 is recruited both inside *mat1M* and to *SAS1* outside of *mat1*.

FIGURE 4: Lsd1/2 and Abp1 are recruited only at *mat1*.

(A) Schematic representation of the analysis used. Green boxes represent homologous sequences. Reads that can be unambiguously mapped are represented by black lines and multi-mapper reads are represented by green lines. Upper drawing represents the result of an alignment without filter (1). Lower drawing represents the alignment after that multi-mapper reads are removed using "samtools" algorithm (2). (B) Distribution of raw coverage of the Abp1, Lsd1, Lsd2, and Sap1 ChIPs. The sequence used for the alignment is a 44-kb region that contains the MT region with the *M* allele at *mat1*: *h⁹⁰* *M*. The lines numbered 1 are the coverage without filter and the lines numbered 2 are the coverage obtained after removal of multi-mapper reads. The arrows indicate the unique-mapper reads at the junction of the *mat* loci. (C) Same as in (B) with the *h⁹⁰* *P* sequence used for the alignment.

Characterization of the Sap1 binding in the *M* allele

We used *in vitro* and *in vivo* complementary approaches to further determine Sap1 binding sequences in the *M* allele. The gel shift experiments were achieved using 14 double-stranded DNA probes labeled in 5'. Two positive controls were included (*SAS1* and *Ter1*) in addition to 10 regions mapping inside the *M* allele and 2 mapping outside (Figure

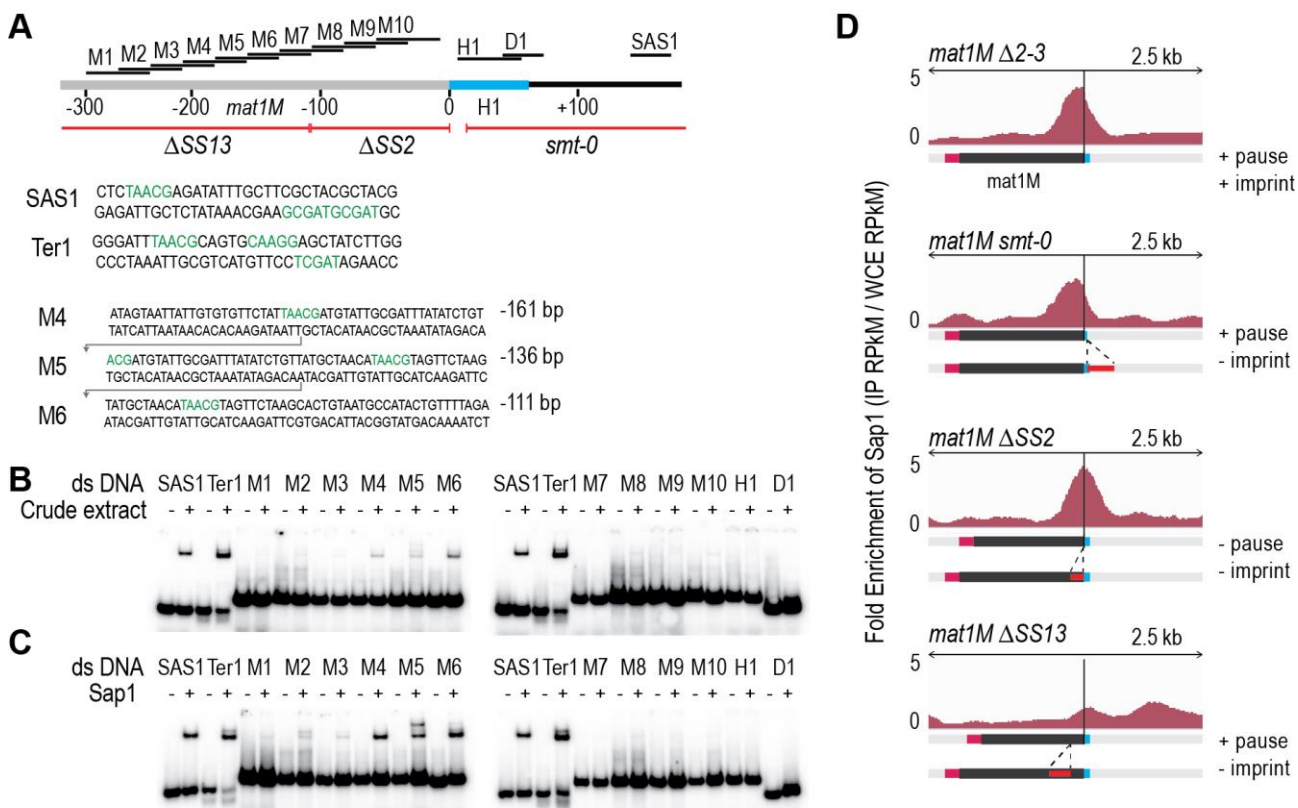


FIGURE 5: Sap1 is recruited in *mat1M*. (A) Schematic view of right region of the *mat1M* locus. The probes used for the shift assay as well as the sites of the deletion strains used for the ChIP-seq of Sap1 are indicated. The sequence of the probes that trigger a shift in B and C are indicated. (B) Electrophoretic mobility shift analysis (EMSA) of crude extracts from *S. pombe*. *SAS1* and *Ter1* are used as controls. In lanes (-), 1 ng of radio labelled dsDNA is used with no proteins. In lanes (+), 5 μ g of total proteins and 1 ng of radio labelled ds DNA are used. (C) EMSA of Sap1-6xHis protein purified from *E. coli*. In lanes (-), 1 ng of radio labelled ds DNA is used with no proteins. In lanes (+), 40 ng of Sap1-6xHis protein and 1 ng of radio labelled ds DNA are used. (D) Distribution of normalized enrichments of Sap1 ChIPs (IP RPKM / WCE RPKM) in the *mat1M* Δ 2-3, *mat1M* *smt-0* Δ 2-3, *mat1M* Δ SS2 Δ 2-3 and *mat1M* Δ SS13 Δ 2-3 backgrounds. The sequence used for the alignment is a 10-kb region that contains the *mat1M*, *mat1M* *smt-0*, *mat1M* Δ SS2 or *mat1M* Δ SS13, respectively. Only *mat1M* is shown. The MT switching phenotype of the deletion strains is indicated.

5A). Using crude protein extracts, we observed the expected mobility shift for *SAS1* and *Ter1* as well as for 3 probes inside the M allele (Figure 5B). We used purified Sap1 protein to confirm that it is responsible for the shift (Figure 5C). Since M4, M5 and M6 are part of a region involved in the stability of the imprint (SS13) [19], we analyzed by ChIP-seq the enrichment of Sap1 in several donor less strains with deletions spanning the *mat1M* locus. The *Msmt-0* deletion does not change the enrichment signal within *mat1M*, whereas the SS13 deletion strongly decreases the Sap1 signal, supporting the *in vitro* interaction result (Figure 5D *Msmt-0* and SS13). The slight decrease on the right of the *mat1M* *smt-0*-containing deletion together with the remaining weak Sap1 signal in SS13 is attributed to the *SAS1* interaction located 140 bp away from the imprint. The SS2 deletion abolishes DNA replication pausing and imprinting [19] but does not affect Sap1 enrichment, whose signal is slightly shifted toward the imprint (Figure 5D Δ SS2). These results indicate that Sap1 is preferentially enriched *in vivo* on two sequences (SS13 and *SAS1*) that

are not necessary for replication fork pausing but required for imprint formation or maintenance, at least at the *mat1M* locus.

Detection of an imprinted site by high throughput sequencing

The imprint was described as either a single stranded break [20] or a one/two ribonucleotide(s) [21, 48] that behave(s) as a mechanical fragile site [49]. Because the chromatin preparation and the Illumina sequencing steps will reveal the imprint as a single strand break, we portray the imprint as a single strand break in the remainder of the text. In Figure 6A, we reasoned that upon chromatin sonication, the strand opposite to the nick will preferentially break at its vicinity. Library preparation using the Illumina kit (TruSeq Chip) uses an exonuclease and a DNA polymerase to process the ends to achieve efficient ligation prior to sequencing (Figure 6B). This method conserves the first nucleotide of the 5' end of all sonicated fragments. Consequently, reads starting at the imprint are expected to be

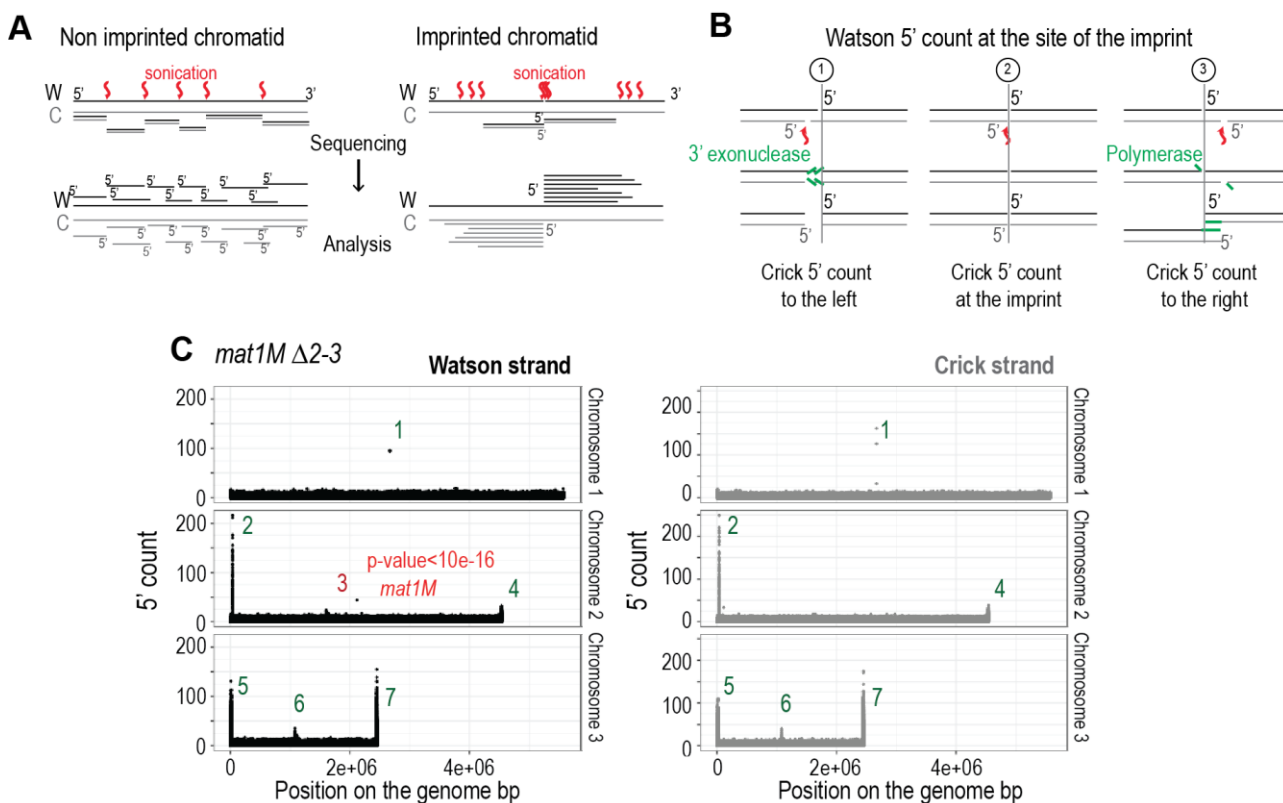


FIGURE 6: The imprint site is detectable by high throughput sequencing on the Watson strand. (A) Schematic view of the result of the sonication of both chromatid types. Red arrows indicate sites of sonication breakage. The black strand is the Watson strand (W) and the gray the Crick (C). 5' of Watson are shown in black and those of Crick in gray. Lower panel indicates the different types of reads obtained after sequencing. **(B)** Schematic representation of the blunting of the end that is used during libraries preparation. The Crick and Watson 5' ends are preserved after treatment. The Crick strand can break at 3 positions compared to the imprint site: to the left, across or to the right. **(C)** Distribution of the 5' count per position in the genome on both strands. *mat1M* $\Delta 2-3$ strain was used for the analysis. p -value is calculated using a theoretical t-student distribution that fits on the distribution of the whole-genome observed 5' count. Regions that have a high 5' count are numerated.

more frequent in the whole chromatin extract even prior to any chromatin immunoprecipitation. Furthermore, it is possible to count for each DNA strand (Watson and Crick) the number of 5' ends at each position in the genome, and we will refer to this count as "5' count" in the rest of the manuscript (see 5' count analysis in Materials and Methods). A whole genome distribution of the 5' count was established on the *mat1M* $\Delta 2-3$ (Figure 6C) and *mat1P* $\Delta 2-3$ and h^{90} strains (Figure 7B-C) using 130 nucleotide-long reads. 7 enriched regions were detected on the Watson strand (Figure 6C). 6 such regions were also detected on the Crick strand (Figure 6C). They delineate either repeated regions or regions exhibiting homology with the mitochondrial genome (Supplementary Table 1). The last enriched 5' count is only found on the Watson strand and corresponds to the imprint site at *mat1* (Figure 6C, in red).

We next focused on the 10-kb region surrounding the *mat1* locus (Figure 7). The overall distribution of 5' count is similar on the Watson and Crick strands, except for one nucleotide (in red) significantly over-represented on the Watson strand (Figure 7). The position in *mat1M* $\Delta 2-3$ and *mat1P* $\Delta 2-3$ corresponds to the imprinted position that is 3 nucleotides apart in *M* and *P* [22] (Figure 7A and 7B). As

expected, both positions are enriched in 5' count in the h^{90} background that contains a mixture of *mat1M* and *mat1P* alleles (Figure 7C). To confirm that the signal results from the imprint, we used the *swi1* Δ mutant strain that exhibits a low level of imprint. In this genetic background, no nucleotide shows any bias in 5' count (Figure 7D).

Because the bias in 5' count is only visible on the imprinted strand, we conclude that sonication does not preferentially break the phosphate bond facing the nick. Therefore, we searched on the Crick strand for a region with a strong 5' count statistical bias. Using a sliding window with different window sizes, we calculated the p -value in the 10-kb region surrounding *mat1* (Figure 8). As expected, the window of one nucleotide at the site of the imprint has the lowest p -value on the Watson strand (Figure 8A and 8B). On the Crick strand, the most significant p -value is contained within a window of 17 to 23 nucleotides facing the imprint (Figure 8C and 8D). This corresponds to the molecular signature of a confined and persistent single-strand break upon chromatin sonication: A unique nucleotide on one strand and a larger region on the opposite strand (Figure 8E and 8F).

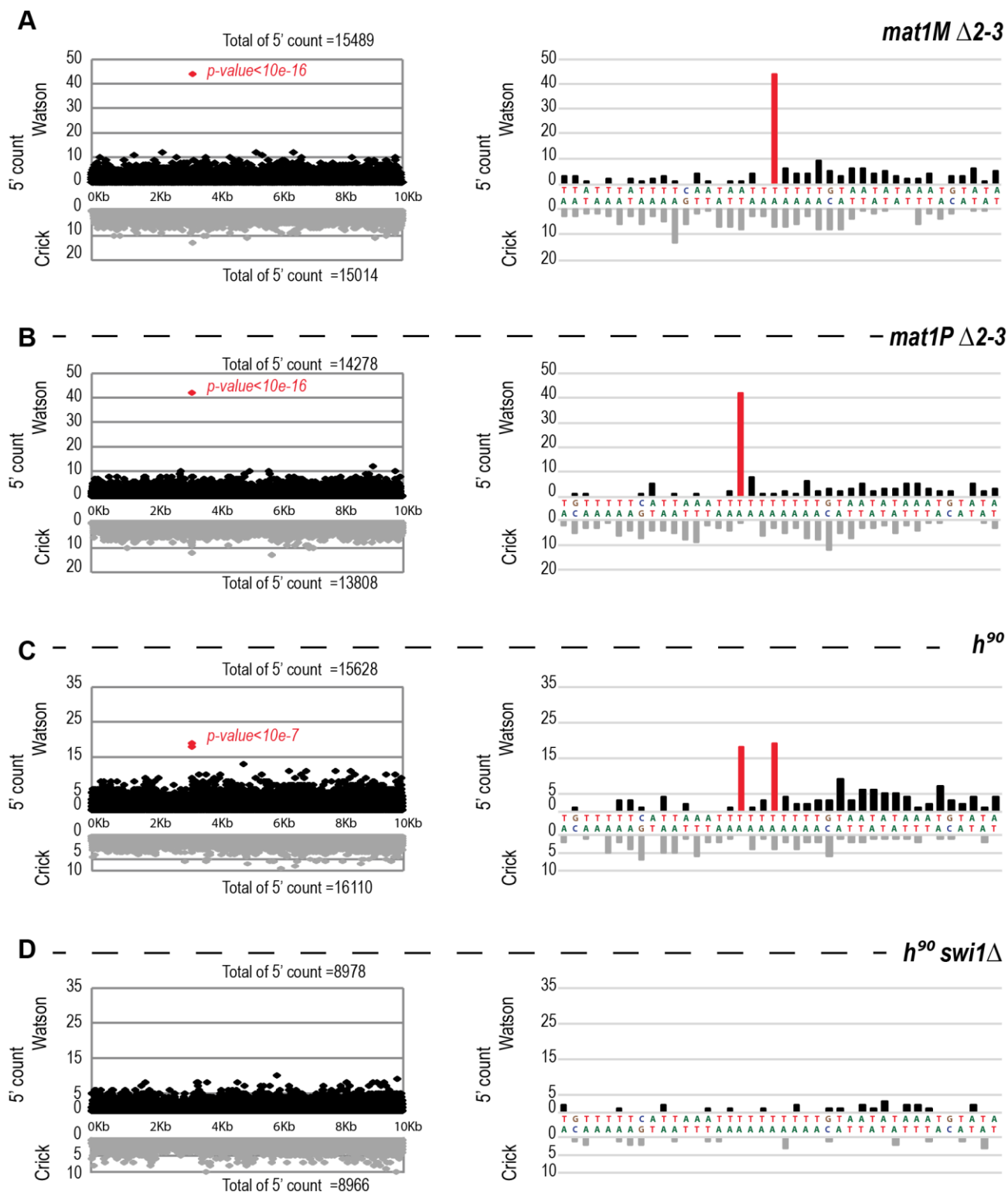


FIGURE 7: 5' count on the Watson strand is biased precisely at the site of the imprint. On the left: distribution of the 5' count of the Watson strand (black) and the Crick strand (gray) on the 10-kb region containing *mat1*. On the right: zoom on the imprint site. Red bars represent the 5' count enriched at the imprint sites. p-value is calculated using a theoretical t-student distribution that fits on the distribution of the whole-genome observed 5' count. (A) The sequencing of *mat1M* Δ2-3 strain is represented, (B) *mat1P* Δ2-3 strain, (C) *h⁹⁰* strain and (D) *h⁹⁰ swi1Δ* strain. ABCD) The *mat1M* Δ2-3, *mat1P* Δ2-3 and *h⁹⁰* P genomes are used, respectively.

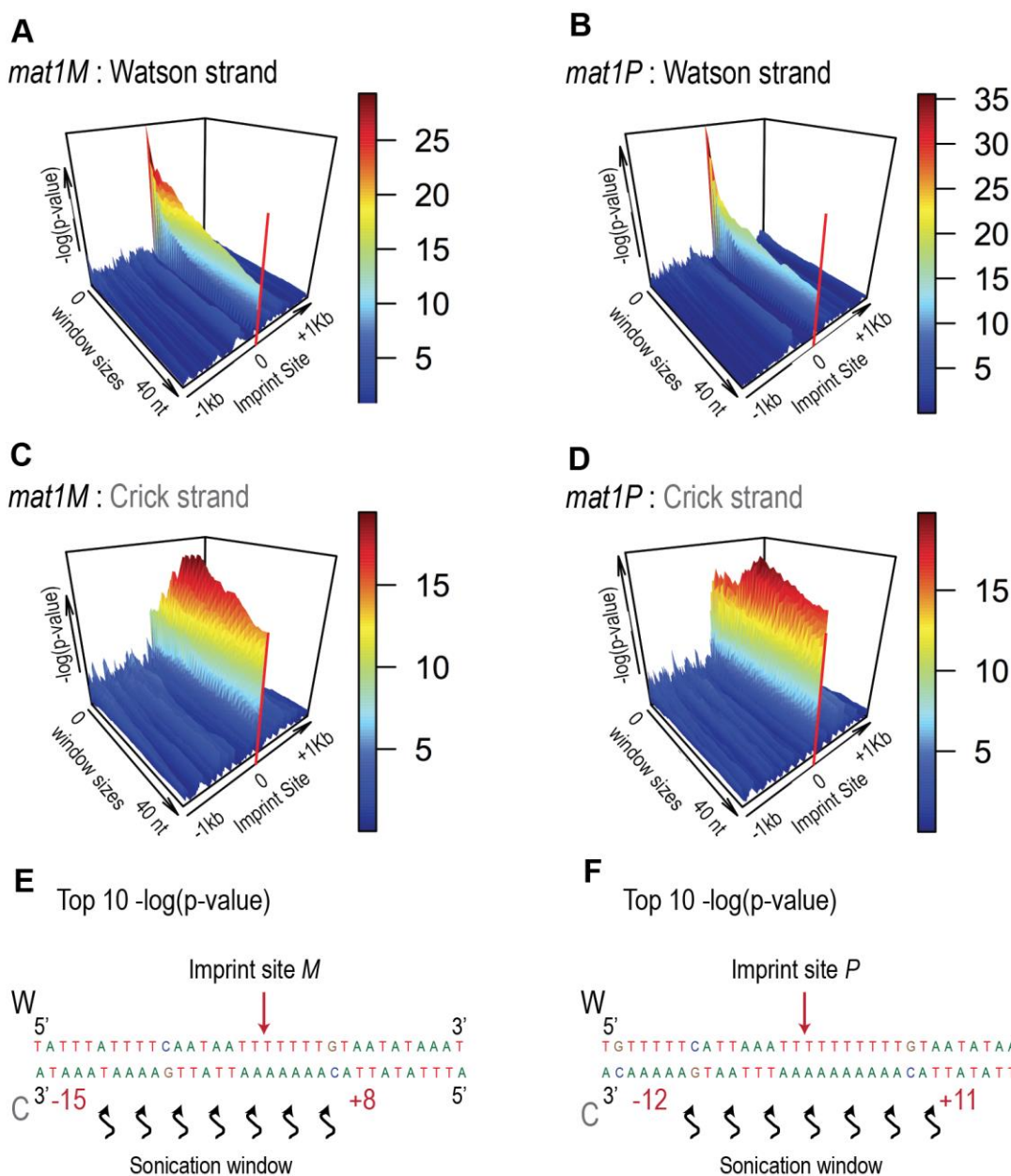


FIGURE 8: Signature of sonication across the imprint. Statistical analysis of the 5' count in the *mat1* region. $-\log(p\text{-value})$ of 5' count as a function of the window size and genome position is represented. The $-\log(p\text{-value})$ scale is indicated on the right of the graphics. The p-value is calculated using theoretical t-student distributions that fit with the distribution of 5' count observe in the 10-kb region that contains *mat1*. **(A)** A sliding window (+/- 1 kb around the imprint site) with step size one and varying window size (1 to 40 nt) is applied when calculating the $-\log(p\text{-value})$ of the 5' count of the Watson strand shown. The sequencing of a *mat1M* $\Delta 2-3$ strain is used. **(B)** Same as in (A) for the Crick strand. **(C)** Window sizes and window positions compared to imprint site for the top 10 $-\log(p\text{-value})$ are indicated. **(D, E and F)** Same as in (A, B and C), respectively for the sequencing of a *mat1P* $\Delta 2-3$ strain.

Immunoprecipitation of the imprinted chromatid

To determine whether Lsd1, Lsd2, and Sap1 interact with the imprinted chromatid and on the right or left of the imprint we used the molecular signature defined above. Figure 9A shows the expected distributions of enriched 5' count upon immunoprecipitation. Since Lsd1/2 and Sap1 bind the repeated *mat* cassettes, we circumvented the

alignment problem by performing the experiment in the donor less strains. For Lsd1, the enrichment of the 5' count at the imprint on the Watson and Crick strands (Figure 9B) at *mat1M* exhibits the molecular signature defined above (Figure 9C). This result shows that Lsd1 interacts on both sides or directly with the imprinted chromatid. The additional spreading of the 5' count on both DNA strands indi-

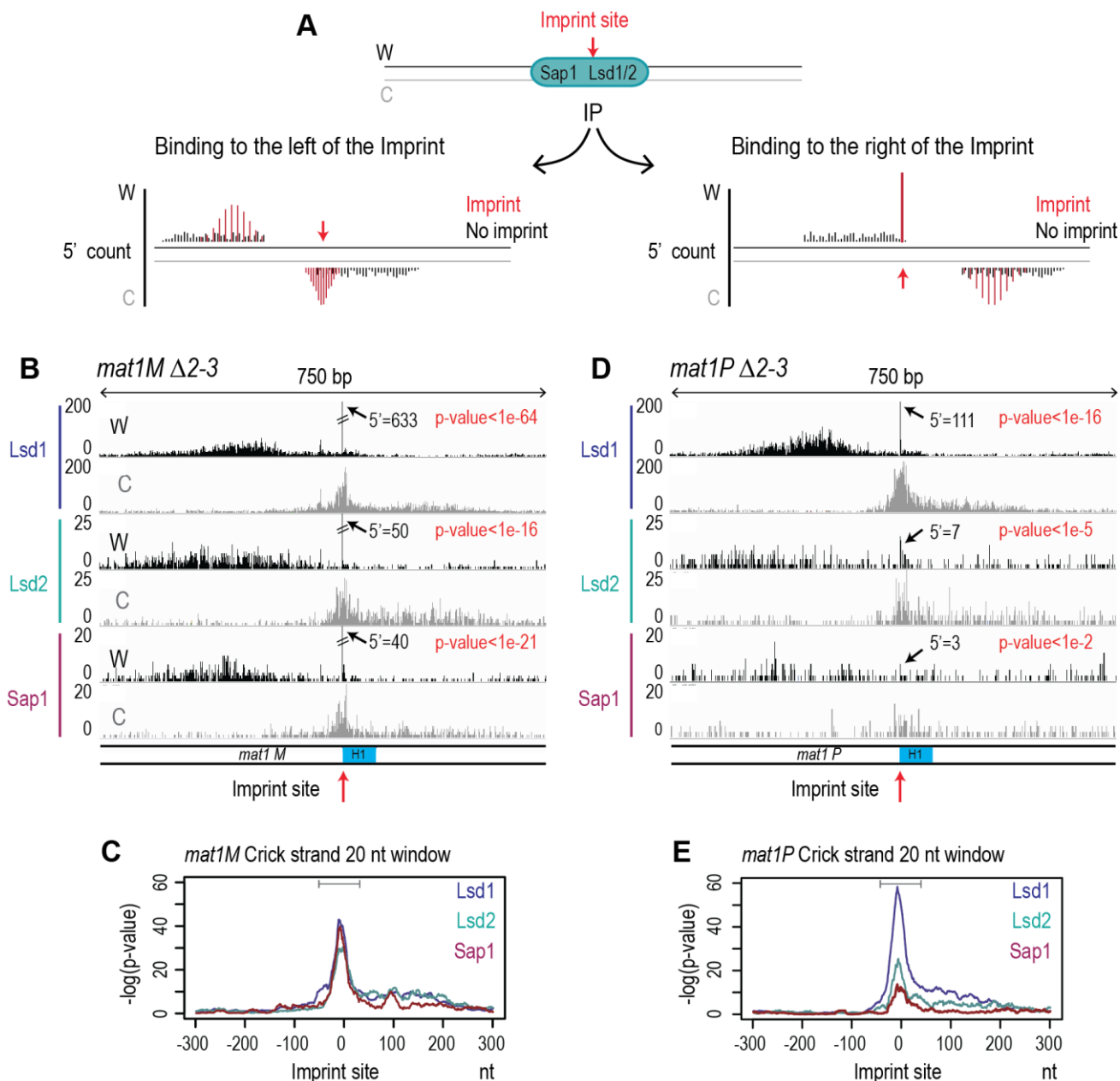


FIGURE 9: Lsd1/2 and Sap1 immunoprecipitate chromatids on both sides of the imprint. Result of the 5' count analysis of the ChIP data presented in Figure 3C. **(A)** Schematic representation of the theoretical 5' count distribution of Lsd1/2 and Sap1. In black, the 5' count of a non-imprinted chromatid and in red that of an imprinted chromatid. **(B)** Distribution of the 5' count of the Lsd1/2 and Sap1 ChIPs for the Watson strand (black) and Crick strand (gray) in the *mat1M* $\Delta 2-3$ background. The 5' count at the imprint site is indicated. The p-value is calculated using theoretical t-student distributions that fit with the distribution of 5' count observed in the 10-kb region that contains *mat1*. **(C)** Analysis of the 5' count bias on the crick strand using a 20 nt window in a *mat1M* $\Delta 2-3$ strains for the IPs of Lsd1-2 and Sap1. A sliding window of 20 nt with set size one is used in a 10 kb region around *mat1* is applied. Gray line indicates the bias of the crick across the imprint. **(D)** Same as in (B) in a *mat1P* $\Delta 2-3$ strain. **(E)** Same as in (C) in a *mat1P* $\Delta 2-3$ strain.

icates that Lsd1 also interacts with the chromatid in the absence of imprint (Figure 9B). A similar 5' count distribution is observed for Lsd1 at *mat1P* (Figure 9D and 9E). Lsd2 and Sap1 exhibit a similar pattern at *mat1M* as well, while their interaction is weaker at *mat1P* (Figure 9D and 9E). Altogether, our results indicate that Lsd1, Lsd2 and Sap1 interact on both sides of the imprint but also with *mat1*

regardless of the imprint. Intriguingly, the interaction at *mat1P* is weaker for Lsd2 and Sap1.

DISCUSSION

In this work, we propose a molecular definition of the imprint upon sonication and genomic sequencing. Our computational analysis demonstrates that a site- and strand-

specific persistent imprint/nick can be unambiguously mapped. The computation of the 5' count reveals a unique accumulation at the site of the imprint on the Watson strand, whereas the opposite Crick strand is mechanically broken by sonication within a window of 20 nucleotides, thus yielding a more diffuse accumulation of 5' ends. This molecular signature is consistent with the free rotation of the Crick strand that generates a population of molecules with weakened A-T rich Watson-Crick pairing on both sides of the nick and makes the resulting single-strand in this window highly prone to breakage. However, we cannot rule out that the proteins preventing the imprint from being repaired contribute as well to the pattern of shearing of the Crick strand.

We also provide data for the chromosomal enrichment at the genome wide level of four proteins, Lsd1, Lsd2, Sap1, and Abp1. Abp1 is strongly interacting with the sequences near *mat1*, but a function in replication fork pausing and imprinting was ruled out. The M-specific enrichment of Abp1 next to the Mc binding site located in the *swi2* gene reinforces the role of Swi2 in directionality [42, 43].

In mammals, Lsd1 plays an important role in gene expression by establishing and maintaining proper epigenetic marks. Several layers control the chromosomal targeting of Lsd1 for positive or negative transcription regulation. CoREST targets the Lsd1 complex to H3K4 [50], whereas the human androgen receptor targets Lsd1 to H3K9 [51]. The plant homeodomain finger protein BHC80 and the HMG protein Braf35 are part of the core complex Lsd1-CoREST (reviewed in [52]). BHC80 participates to the reading of histone marks [53] and Braf35 [54] is a structural DNA-binding protein.

In fission yeast, several pieces of evidence support the specific demethylation of H3K9 by Lsd1 at many promoters and boundary elements, but its role on H3K4 was not established [29, 55]. Lsd1 is part of a complex including Lsd2 and Phf1/Phf2, two plant homeodomain finger proteins [53], and Lsd1 and Lsd2 are both fused to an HMG domain in fungi [56]. Taken together, the protein composition of the Lsd1/2 core complex is quite similar in fission yeast and mammals and the main functional difference resides in the absence of H3K4 demethylation. Because Sap1 interacts with the Lsd1/2 complex [29] and that Sap1 and Lsd1/2 complex are overlapping at several locations within the genome (see Supplemental Figure 1A) and notably at highly expressed genes (see Supplemental Figure 1B-E), we propose that Sap1 participates in the targeting of the Lsd1/2 complex to prevent H3K9 methylation at key promoters and therefore define heterochromatin boundaries [29, 57].

The situation is more complicated at the mating type locus, where the methylation state of H3K9 is not involved in the early mating type switching steps. At this locus, the presence or absence of the sole H3K9 methyltransferase Clr4 does not rescue the mating type switching defect observed when *Lsd1* is mutated [27]. Although *mat1P* and *mat1M* exhibit no sequence homology, a remarkable finding is that Lsd1 and Lsd2 are enriched in both alleles on sequences that are necessary to promote replication fork

pauses at *MPS1* on the chromosome, and sufficient on a plasmid system [19]. Interestingly, when *P* and *M* sequences are present at the silent *mat2P* and *mat3M* loci, Lsd1 and Lsd2 are not detected (Supplemental Figure S2), consistent with the absence of replication fork pause at these loci [19]. In addition, the absence of H3K9 methylation (*clr4* mutant) is not sufficient to trigger recruitment of Lsd1/2 at the silent *mat2/3* loci (data not shown). We propose that the Phf1/Phf2 histone code readers participate to the targeting of Lsd1/2 at *mat1* and probably at the other transcriptionally active loci [53].

By using the molecular signature of the imprint, we provide strong evidence that the Lsd1/2 complex is interacting at the imprint site, prior and after imprint formation. The same conclusion was reached by showing that Lsd1/2 is working upstream of Swi1/3 and is still enriched at *mat1* in the absence of an imprint [27]. The two Sap1 binding sites on either side of the imprint (SS13 and SAS1) overlap with regions that are dispensable for both replication fork pausing and Lsd1/2 initial recruitment, but are essential for imprint formation or maintenance, at least when *mat1* contains the M allele. When *mat1* contains the P allele, only the SAS1 site remains, since no enrichment for Sap1 could be detected in the P sequences. This result further indicates that the processes required for replication fork pause and imprinting formation/protection are not identical in M and P cells. One possibility would be that Sap1 is either modified and not efficiently recognized during the immunoprecipitation or replaced by another protein in P cells.

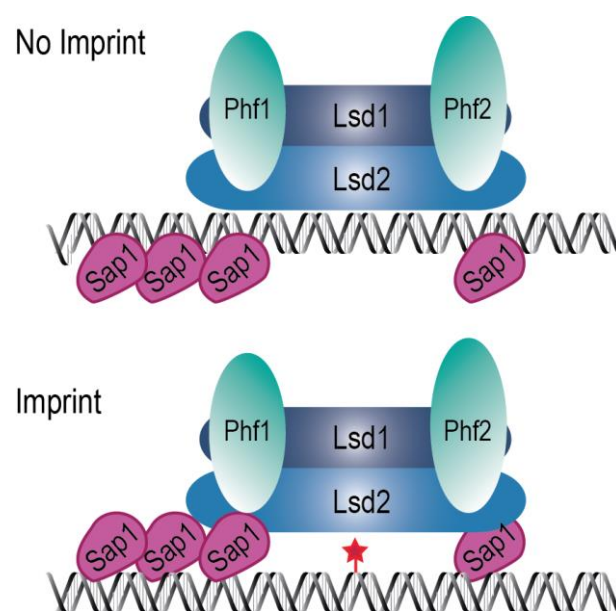


FIGURE 10: The imprintosome. Schematic view of the model of binding of Lsd1/2 and Sap1 at *mat1*. Lsd1/2 complex is represented in blue with Phf1/2 in green. Sap1 is represented in pink. The imprint is represented by a red star. Upper panel, Lsd1/2 complex is recruited on the imprint site on the chromatid with no imprint independently of Sap1. Lower panel, when the imprint is formed Sap1 stabilizes the Lsd1/2 complex.

The simplest model accounting for our results is that the Lsd1/2 complex is epigenetically recruited to *mat1* independently of Sap1 to promote replication fork pausing at *MPS1* (Figure 10, No Imprint). Following replication fork restart and imprinting, Sap1 and Lsd1/2 form a chromatin structure, the imprintosome, that protects the imprint from being repaired (Figure 10, Imprint). We propose that Lsd1/2 controls replication fork pausing at *mat1* on both the imprinted and the non-imprinted chromatids, thus allowing the fork to restart in the same environment at each round of DNA replication and produce persistently and efficiently the imprint.

MATERIALS AND METHODS

Fission yeast strains and genetic procedures

The *S. pombe* strains used in this study are listed in Supplemental Table S3. Standard media (YES) and genetic protocols for fission yeast were used [58].

2D Gel Analysis

2D gel analysis of replication intermediates was carried out as described previously [59]. DNA was prepared and digested in agarose plugs with the indicated restriction enzymes [12]. Enriched fractions for replication intermediates were obtained using BND cellulose columns (SIGMA). Gels were blotted onto Hybond-N+ nylon membrane. The probes were labeled with alpha-³²P dCTP and the blot analyzed on a PhosphorImager and quantified with the ImageQuant software (pause/ arc + pause in percentage) (GE Healthcare Life Sciences). Sequences of primers used to produce the probe are indicated in Table 2.

Gel shift assay

Production of Sap1-6His by *E. coli* was induced with 1 mM IPTG as previously described [32]. Sap1-6His was purified using column of Ni-NTA His-tag from Qiagen according to the manufacturer's instructions. Sequences used are listed in Table 2. 1.50 ng of a given oligonucleotide was labeled with gamma-³²P with T4 polynucleotide Kinase (NEB) and incubated with its cold complementary sequence. 1 ng of the resulting double stranded probe was incubated with 5 µg of total protein extract or with 40 ng of purified Sap1-6His [44]. Gel shift was performed as previously described [60].

Chromatin Immunoprecipitation (ChIP)

ChIP-sequencing was performed as previously described [35] with the following modifications: fixation for ChIP of Lsd1 and Lsd2 was carried out at 25°C for 20 min with 1% of paraformaldehyde (PFA) and fixation for ChIP of Sap1 and Abp1 was performed at 18°C for 15 min with 3% of PFA. For Lsd1 and Lsd2, an Anti-Myc-Tag mAb-magnetic Beads (M047-11 MBL) was used. For Abp1 and Sap1, Dynabeads Protein G 10007D (Invitrogen) coupled with Tap Tag antibody CAB1001 (Pierce Thermo) or with polyclonal serum against the native Sap1 [53], respectively, were used. For the ChIP followed by qPCR analysis, 3x10⁸ cells were used with one tenth the amount of reagents.

quantitative PCR (q-PCR)

qPCR was performed using a master mix (Eurobio Green qPCR Mix Lo-Rox) on the qTower Analytik Jena AG A6 machine. Each value is the mean of technical triplicates. The enrichment was

obtained using the $\Delta\Delta Cq$ normalization method using the value of a pair of primers localized 3 kb away from *mat1* and the WCE values. The list of primer sequences is in Supplemental Table S4. Experiments were performed 3-times and unpaired t-test were used to calculate the p values.

Illumina Sequencing of DNA

Libraries were prepared using TruSeq ChIP Library Preparation kit following the manufacturer's instructions (Illumina). Libraries are checked for concentration and quality on DNA chips with a Bioanalyser (Agilent). The libraries were quantified by fluorimetric measurements with the Qubit® dsDNA HS Assay Kit (ThermoFisher). 65-bp and 130-bp Single Read sequences were generated on the HiSeq2500 sequencer according to manufacturer's instructions (Illumina). Library statistics are provided in Supplemental Table S5.

Illumina Read Processing and Alignment of DNA Libraries

Illumina reads were aligned to the *S. pombe* genome assembly ASM294v2.23 using Bowtie v2.1.0 [61] with default parameters and multi-mapper reads randomly distributed. Using BamTools [62], read counts were normalized to reads per million per kilo base (RPKM), using the total library size and a bin size of 1 kb. For the analysis of multi-mapper reads, we filtered aligned read files with samtools [63] using the parameter -q 10.

ChIP-Sequencing Analysis

ChIP peaks versus appropriate inputs (whole-cell extracts) were called using MACS v2.1.0 [64]. Statistic validation of peaks was performed using the IDR method with ENCODE recommendations [65]. Genome browser tracks and meta-analysis were created using enrichment (IP reads per million (RPM) / input RPM) of indicated sequencing. Intersection of lists of peaks were calculated with BEDTools v.2.17.02 [66] (parameters: -u). For the transcriptional analysis 2 groups of 108 genes were defined and intersected with the list of peaks shared by Lsd1/2 and Sap1. The first group contains the 108 most present transcripts and the 108 less present transcripts using the normalized data from [67].

5' count analysis

We used a script to extract the beginning of reads that map on the Watson or Crick strands. Enrichments of 5' count were obtained using the total library size. p-values were obtained using the negative binomial distribution fitting function in R.

All scripts used for the analysis and outputs are available upon request.

ACKNOWLEDGEMENTS

This work has been supported by the Fondation ARC for Cancer Research and by the Fondation pour la Recherche Médicale (FRM) and the Pasteur Institute. We are dedicating this article to the memory of Amar Klar and Jacob Dalgaard, two great scientists who have investigated for several decades the epigenetic aspects of mating-type switching in fission yeast. Amar Klar passed away in March and Jacob Dalgaard in December. Our community has lost two insightful and keen members.

AUTHOR CONTRIBUTIONS

C.R performed experiments. C.P prepared the libraries for sequencing. H.W provided a purified Sap1 protein. C.R and B.J performed the computational analysis. C.R and B.A conceived experiments. C.R., S.G. and B.A. wrote the manuscript.

SUPPLEMENTAL MATERIAL

All supplemental data for this article are available online at www.microbialcell.com.

CONFLICT OF INTEREST

The authors declare that no competing interests exist.

REFERENCES

1. Beach D, Nurse P, and Egel R (1982). Molecular rearrangement of mating-type genes in fission yeast. *Nature* 296(5858): 682–683. PMID: 7070512
2. Kelly M, Burke J, Smith M, Klar A, and Beach D (1988). Four mating-type genes control sexual differentiation in the fission yeast. *EMBO J* 7(5): 1537–1547. PMID: 2900761
3. Beach DH (1983). Cell type switching by DNA transposition in fission yeast. *Nature* 305: 682–688. doi: 10.1038/305682a0
4. Egel R, and Gutz H (1981). Gene activation by copy transposition in mating-type switching of a homothallic fission yeast. *Curr Genet* 3(1): 5–12. doi: 10.1007/BF00419574
5. Egel R (1984). Two tightly linked silent cassettes in the mating-type region of *Schizosaccharomyces pombe*. *Curr Genet* 8(3): 199–203. doi: 10.1007/BF00417816
6. Grewal SIS (2000). Transcriptional silencing in fission yeast. *Journal of Cellular Physiology* 184(3): 311–318. doi: 10.1002/1097-4652(200009)184:3<311::AID-JCP4>3.0.CO;2-D
7. Thon G, and Verhein-Hansen J (2000). Four chromo-domain proteins of *Schizosaccharomyces pombe* differentially repress transcription at various chromosomal locations. *Genetics* 155(2): 551–568. PMID: 10835380
8. Thon G, Bjerling P, Bünner CM, and Verhein-Hansen J (2002). Expression-state boundaries in the mating-type region of fission yeast. *Genetics* 161(2): 611–622. PMID: 12072458
9. Noma K, Allis CD, and Grewal SI (2001). Transitions in distinct histone H3 methylation patterns at the heterochromatin domain boundaries. *Science* 293(5532): 1150–1155. doi: 10.1126/science.1064150
10. Grewal SI, and Klar AJ (1997). A recombinationally repressed region between *mat2* and *mat3* loci shares homology to centromeric repeats and regulates directionality of mating-type switching in fission yeast. *Genetics* 146(4): 1221–1238. PMID: 9258669
11. Arcangioli B, and de Lahondès R (2000). Fission yeast switches mating type by a replication-recombination coupled process. *EMBO J* 19(6): 1389–1396. doi: 10.1093/emboj/19.6.1389
12. Kaykov A, Holmes AM, and Arcangioli B (2004). Formation, maintenance and consequences of the imprint at the mating-type locus in fission yeast. *EMBO J* 23(4): 930–938. doi: 10.1038/sj.emboj.7600099
13. Fleck O, Rudolph C, Albrecht A, Lorentz A, Schar P, and Schmidt H (1994). The mutator gene *swi8* effects specific mutations in the mating-type region of *Schizosaccharomyces pombe*. *Genetics* 138(3): 621–632. PMID: 7851760

COPYRIGHT

© 2018 Raimondi *et al.* This is an open-access article released under the terms of the Creative Commons Attribution (CC BY) license, which allows the unrestricted use, distribution, and reproduction in any medium, provided the original author and source are acknowledged.

Please cite this article as: Célia Raimondi, Bernd Jagla, Caroline Proux, Hervé Waxin, Serge Gangloff, Benoit Arcangioli (2018). Molecular signature of the imprintosome complex at the mating-type locus in fission yeast. *Microbial Cell* 5(4): 169–183. doi: 10.15698/mic2018.04.623

14. Dalgaard JZ, and Klar AJ (2001). Does *S. pombe* exploit the intrinsic asymmetry of DNA synthesis to imprint daughter cells for mating-type switching? *Trends Genet* 17(3): 153–157. PMID: 11226610

15. Arcangioli B, and Thon G (2004). Mating-Type Cassettes: Structure, Switching and Silencing. In: Egel R. (eds) *The Molecular Biology of Schizosaccharomyces pombe*. Springer, Berlin, Heidelberg ; pp 129–147. doi: 10.1007/978-3-662-10360-9_9

16. Klar AJ, Ishikawa K, and Moore S (2014). A Unique DNA Recombination Mechanism of the Mating/Cell-type Switching of Fission Yeasts: a Review. *Microbiol Spectr* 2(5). doi: 10.1128/microbiolspec.MDNA3-0003-2014

17. Holmes AM, Kaykov A, and Arcangioli B (2005). Molecular and cellular dissection of mating-type switching steps in *Schizosaccharomyces pombe*. *Mol Cell Biol* 25(1): 303–311. doi: 10.1128/MCB.25.1.303-311.2005

18. Dalgaard LZ, and Klar A (1999). Orientation of DNA replication establishes mating-type switching pattern in *S-pombe*. *Nature* 400(6740): 181–184. doi: 10.1038/22139

19. Sayrac S, Vengrova S, Godfrey EL, and Dalgaard JZ (2011). Identification of a novel type of spacer element required for imprinting in fission yeast. *PLoS Genet* 7(3): e1001328. doi: 10.1371/journal.pgen.1001328

20. Kaykov A, and Arcangioli B (2004). A programmed strand-specific and modified nick in *S. pombe* constitutes a novel type of chromosomal imprint. *Curr Biol* 14(21): 1924–1928. doi: 10.1016/j.cub.2004.10.026

21. Vengrova S, and Dalgaard JZ (2006). The wild-type *Schizosaccharomyces pombe mat1* imprint consists of two ribonucleotides. *EMBO Rep* 7(1): 59–65. doi: 10.1038/sj.embor.7400576

22. Nielsen O, and Egel R (1989). Mapping the double-strand breaks at the mating-type locus in fission yeast by genomic sequencing. *EMBO J* 8(1): 269–276. PMID: 2714252

23. Thon G, and Klar AJ (1993). Directionality of fission yeast mating-type interconversion is controlled by the location of the donor loci. *Genetics* 134(4): 1045–1054. PMID: 8375648

24. Klar AJ, and Miglio LM (1986). Initiation of meiotic recombination by double-strand DNA breaks in *S. pombe*. *Cell* 46(5): 725–731. PMID: 3742597

25. Roseaulin L, Yamada Y, Tsutsui Y, Russell P, Iwasaki H, and Arcangioli B (2008). Mus81 is essential for sister chromatid recombination at broken replication forks. *EMBO J* 27(9): 1378–1387. doi: 10.1038/emboj.2008.65

26. Stykárskádtítr U, Egel R, and Nielsen O (1993). The *smt-0* mutation

- which abolishes mating-type switching in fission yeast is a deletion. **Curr Genet** 23(2): 184–186. PMID: 8431959
27. Holmes AM, Roseaulin L, Schurra C, Waxin H, Lambert S, Zaratiegui M, Martienssen RA, and Arcangioli B (2012). Lsd1 and Lsd2 control programmed replication fork pauses and imprinting in fission yeast. **Cell Rep** 2(6): 1513–1520. doi: 10.1016/j.celrep.2012.10.011
28. Dalgaard JZ, and Klar AJ (2000). *swi1* and *swi3* perform imprinting, pausing, and termination of DNA replication in *S. pombe*. **Cell** 102(6): 745–751. PMID: 11030618
29. Lan F, Zaratiegui M, Villén J, Vaughn MW, Verdel A, Huarte M, Shi Y, Gygi SP, Moazed D, Martienssen RA, and Shi Y (2007). *S. pombe* LSD1 homologs regulate heterochromatin propagation and euchromatic gene transcription. **Mol Cell** 26(1): 89–101. doi: 10.1016/j.molcel.2007.02.023
30. Nicholson TB, and Chen T (2009). LSD1 demethylates histone and non-histone proteins. **Epigenetics** 4(3): 129–132. PMID: 19395867
31. Noguchi E, Noguchi C, McDonald WH, Yates JR, and Russell P (2004). Swi1 and Swi3 are components of a replication fork protection complex in fission yeast. **Mol Cell Biol** 24(19): 8342–8355. doi: 10.1128/MCB.24.19.8342-8355.2004
32. Arcangioli B, Copeland TD, and Klar AJ (1994). Sap1, a protein that binds to sequences required for mating-type switching, is essential for viability in *Schizosaccharomyces pombe*. **Mol Cell Biol** 14(3): 2058–2065. PMID: 8114737
33. Mejia-Ramirez E, Sanchez-Gorostiaga A, Krimer DB, Schwartzman JB, and Hernandez P (2005). The mating type switch-activating protein Sap1 is required for replication fork arrest at the rRNA genes of fission yeast. **Mol Cell Biol** 25(19): 8755–8761. doi: 10.1128/MCB.25.19.8755-8761.2005
34. Krings G, and Bastia D (2005). Sap1p binds to Ter1 at the ribosomal DNA of *Schizosaccharomyces pombe* and causes polar replication fork arrest. **J Biol Chem** 280(47): 39135–39142. doi: 10.1074/jbc.M508996200
35. Zaratiegui M, Vaughn MW, Irvine DV, Goto D, Watt S, Bähler J, Arcangioli B, and Martienssen RA (2011). CENP-B preserves genome integrity at replication forks paused by retrotransposon LTR. **Nature** 469(7328): 112–115. doi: 10.1038/nature09608
36. Guan L, He P, Yang F, Zhang Y, Hu Y, Ding J, Hua Y, Zhang Y, Ye Q, Hu J, Wang T, Jin C, and Kong D (2017). Sap1 is a replication-initiation factor essential for the assembly of pre-replicative complex in the fission yeast *Schizosaccharomyces pombe*. **J Biol Chem** 292(15): 6056–6075. doi: 10.1074/jbc.M116.767806
37. Jacobs JZ, Rosado-Lugo JD, Cranz-Mileva S, Ciccaglione KM, Tournier V, and Zaratiegui M (2015). Arrested replication forks guide retrotransposon integration. **Science** 349(6255): 1549–1553. doi: 10.1126/science.aaa3810
38. Hickey A, Esnault C, Majumdar A, Chatterjee AG, Iben JR, McQueen PG, Yang AX, Mizuguchi T, Grewal SIS, and Levin HL (2015). Single-Nucleotide-Specific Targeting of the Tf1 Retrotransposon Promoted by the DNA-Binding Protein Sap1 of *Schizosaccharomyces pombe*. **Genetics** 201(3): 905–U203. doi: 10.1534/genetics.115.181602
39. Mizuguchi T, Taneja N, Matsuda E, Belton J-M, FitzGerald P, Dekker J, and Grewal SIS (2017). Shelterin components mediate genome reorganization in response to replication stress. **Proc Natl Acad Sci USA** 114(21): 5479–5484. doi: 10.1073/pnas.1705527114
40. de Lahondès R, Ribes V, and Arcangioli B (2003). Fission yeast Sap1 protein is essential for chromosome stability. **Eukaryotic Cell** 2(5): 910–921. doi: 10.1128/EC.2.5.910-921.2003
41. Aguilar-Arnal L, Marsellach F-X, and Azorín F (2008). The fission yeast homologue of CENP-B, Abp1, regulates directionality of mating-type switching. **EMBO J** 27(7): 1029–1038. doi: 10.1038/emboj.2008.53
42. Matsuda E, Sugioka-Sugiyama R, Mizuguchi T, Mehta S, Cui B, and Grewal SIS (2011). A homolog of male sex-determining factor SRY cooperates with a transposon-derived CENP-B protein to control sex-specific directed recombination. **Proc Natl Acad Sci USA** 108(46): 18754–18759. doi: 10.1073/pnas.1109988108
43. Yu C, Bonaduce MJ, and Klar AJS (2012). Going in the right direction: mating-type switching of *Schizosaccharomyces pombe* is controlled by judicious expression of two different *swi2* transcripts. **Genetics** 190(3): 977–987. doi: 10.1534/genetics.111.137109
44. Arcangioli B, and Klar AJ (1991). A novel switch-activating site (SAS1) and its cognate binding factor (SAP1) required for efficient *mat1* switching in *Schizosaccharomyces pombe*. **EMBO J** 10(10): 3025–3032. PMID: 1915277
45. Gordon M, Holt DG, Panigrahi A, Wilhelm BT, Erdjument-Bromage H, Tempst P, Bähler J, and Cairns BR (2007). Genome-wide dynamics of SAPHIRE, an essential complex for gene activation and chromatin boundaries. **Mol Cell Biol** 27(11): 4058–4069. doi: 10.1128/MCB.02044-06
46. Noma K-I, Cam HP, Maraia RJ, and Grewal SIS (2006). A role for TFIIC transcription factor complex in genome organization. **Cell** 125(5): 859–872. doi: 10.1016/j.cell.2006.04.028
47. Cam HP, Noma K-I, Ebina H, Levin HL, and Grewal SIS (2008). Host genome surveillance for retrotransposons by transposon-derived proteins. **Nature** 451(7177): 431–436. doi: 10.1038/nature06499
48. Vengrova S, and Dalgaard JZ (2004). RNase-sensitive DNA modification(s) initiates *S. pombe* mating-type switching. **Genes Dev** 18(7): 794–804. doi: 10.1101/gad.289404
49. Arcangioli B (1998). A site- and strand-specific DNA break confers asymmetric switching potential in fission yeast. **EMBO J** 17(15): 4503–4510. doi: 10.1093/emboj/17.15.4503
50. Shi Y, Lan F, Matson C, Mulligan P, Whetstone JR, Cole PA, Casero RA, and Shi Y (2004). Histone demethylation mediated by the nuclear amine oxidase homolog LSD1. **Cell** 119(7): 941–953. doi: 10.1016/j.cell.2004.12.012
51. Metzger E, Wissmann M, Yin N, Müller JM, Schneider R, Peters AHFM, Günther T, Büttner R, and Schüle R (2005). LSD1 demethylates repressive histone marks to promote androgen-receptor-dependent transcription. **Nature** 437(7057): 436–439. doi: 10.1038/nature04020
52. Meier K, and Brehm A (2014). Chromatin regulation: how complex does it get? **Epigenetics** 9(11): 1485–1495. doi: 10.4161/15592294.2014.971580
53. Lan F, Collins RE, De Cegli R, Alpatov R, Horton JR, Shi X, Gozani O, Cheng X, and Shi Y (2007). Recognition of unmethylated histone H3 lysine 4 links BHC80 to LSD1-mediated gene repression. **Nature** 448(7154): 718–722. doi: 10.1038/nature06034
54. Hakimi M-A, Bochar DA, Chenoweth J, Lane WS, Mandel G, and Shiekhatter R (2002). A core-BRAF35 complex containing histone deacetylase mediates repression of neuronal-specific genes. **Proc Natl Acad Sci USA** 99(11): 7420–7425. doi: 10.1073/pnas.112008599
55. Opel M, Lando D, Bonilla C, Treweek SC, Boukaba A, Walfridsson J, Cauwood J, Werler PJH, Carr AM, Kouzarides T, Murzina NV, Allshire RC, Ekwall K, and Laue ED (2007). Genome-wide studies of histone demethylation catalysed by the fission yeast homologues of mammalian LSD1. **PLoS ONE** 2(4): e386. doi: 10.1371/journal.pone.0000386
56. Nicolas E, Lee MG, Hakimi M-A, Cam HP, Grewal SIS, and Shiekhatter R (2006). Fission yeast homologs of human histone H3 lysine 4

- demethylase regulate a common set of genes with diverse functions. **J Biol Chem** 281(47): 35983–35988. doi: 10.1074/jbc.M606349200
57. Li F, Huarte M, Zaratiegui M, Vaughn MW, Shi Y, Martienssen R, and Cande WZ (2008). Lid2 is required for coordinating H3K4 and H3K9 methylation of heterochromatin and euchromatin. **Cell** 135(2): 272–283. doi: 10.1016/j.cell.2008.08.036
58. Moreno S, Klar A, and Nurse P (1991). Molecular genetic analysis of fission yeast *Schizosaccharomyces pombe*. **Molecular Methods Enzymol** 194:795–823. PMID : 2005825
59. Brewer BJ, and Fangman WL (1988). A replication fork barrier at the 3' end of yeast ribosomal RNA genes. **Cell** 55(4): 637–643. doi: 10.1016/0092-8674(88)90222-X
60. Arcangioli B, and LESCURE B (1985). Identification of Proteins Involved in the Regulation of Yeast Iso-1-Cytochrome-C Expression by Oxygen. **EMBO J** 4(10): 2627–2633. PMID: 2996882
61. Langmead B, Trapnell C, Pop M, and Salzberg SL (2009). Ultrafast and memory-efficient alignment of short DNA sequences to the human genome. **Genome Biol** 10(3): R25. doi: 10.1186/gb-2009-10-3-r25
62. Barnett DW, Garrison EK, Quinlan AR, Stroemberg MP, and Marth GT (2011). BamTools: a C++ API and toolkit for analyzing and managing BAM files. **Bioinformatics** 27(12): 1691–1692. doi: 10.1093/bioinformatics/btr174
63. Li H, and Durbin R (2009). Fast and accurate short read alignment with Burrows-Wheeler transform. **Bioinformatics** 25(14): 1754–1760. doi: 10.1093/bioinformatics/btp324
64. Zhang Y, Liu T, Meyer CA, Eeckhoute J, Johnson DS, Bernstein BE, Nusbaum C, Myers RM, Brown M, Li W, and Liu XS (2008). Model-based analysis of ChIP-Seq (MACS). **Genome Biol** 9(9): R137. doi: 10.1186/gb-2008-9-9-r137
65. Landt SG et al. (2012). ChIP-seq guidelines and practices of the ENCODE and modENCODE consortia. **Genome Res** 22(9): 1813–1831. doi: 10.1101/gr.136184.111
66. Quinlan AR, and Hall IM (2010). BEDTools: a flexible suite of utilities for comparing genomic features. **Bioinformatics** 26(6): 841–842. doi: 10.1093/bioinformatics/btq033
67. Marguerat S, Schmidt A, Codlin S, Chen W, Aebersold R, and Bähler J (2012). Quantitative analysis of fission yeast transcriptomes and proteomes in proliferating and quiescent cells. **Cell** 151(3): 671–683. doi: 10.1016/j.cell.2012.09.019
68. Pohl A, and Beato M (2014). bwtool: a tool for bigWig files. **Bioinformatics** 30(11): 1618–1619. doi: 10.1093/bioinformatics/btu056