



**HAL**  
open science

## The risk and clinical outcome of candidemia depending on underlying malignancy

Olivier Lortholary, Charlotte Renaudat, Karine Sitbon, Marie Desnos-Ollivier, Stéphane Bretagne, Françoise Dromer, The French Mycoses Study Group

### ► To cite this version:

Olivier Lortholary, Charlotte Renaudat, Karine Sitbon, Marie Desnos-Ollivier, Stéphane Bretagne, et al.. The risk and clinical outcome of candidemia depending on underlying malignancy. *Intensive Care Medicine*, 2017, 43 (5), pp.652 - 662. 10.1007/s00134-017-4743-y . pasteur-01854453

**HAL Id: pasteur-01854453**

**<https://pasteur.hal.science/pasteur-01854453>**

Submitted on 6 Aug 2018

**HAL** is a multi-disciplinary open access archive for the deposit and dissemination of scientific research documents, whether they are published or not. The documents may come from teaching and research institutions in France or abroad, or from public or private research centers.

L'archive ouverte pluridisciplinaire **HAL**, est destinée au dépôt et à la diffusion de documents scientifiques de niveau recherche, publiés ou non, émanant des établissements d'enseignement et de recherche français ou étrangers, des laboratoires publics ou privés.



Distributed under a Creative Commons Attribution - NonCommercial 4.0 International License

ORIGINAL



# The risk and clinical outcome of candidemia depending on underlying malignancy

Olivier Lortholary<sup>1,2\*</sup>, Charlotte Renaudat<sup>1</sup>, Karine Sitbon<sup>1</sup>, Marie Desnos-Ollivier<sup>1</sup>, Stéphane Bretagne<sup>1,3</sup>, Françoise Dromer<sup>1</sup> and The French Mycoses Study Group

© 2017 The Author(s). This article is an open access publication

## Abstract

**Purpose:** To assess the risk factors and outcomes associated with fungemia caused by the six most commonly occurring *Candida* species in patients with and without malignancies.

**Methods:** Analysis of the episodes of fungemia due to common *Candida* species in adults, based on an active hospital-based surveillance program (Paris area, France, 2002 to 2014).

**Results:** Of the 3417 patients (3666 isolates), 1164 (34.1%) had a solid tumor (45.7% digestive tract) and 586 (17.1%) a hematological malignancy (41.8% lymphoma, 33.5% acute leukemia). The hematology patients were significantly younger, more often pre-exposed to antifungals, more often infected by *C. tropicalis*, *C. krusei*, or *C. kefyr*, and more often treated in the first instance with an echinocandin. Compared with inpatients who were not in ICU at the time of fungemia, those in ICU were less frequently infected by *C. parapsilosis* ( $p < 0.02$ ), had more recent surgery ( $p < 0.03$ ), and died more frequently before day 8 and day 30 ( $p < 0.0001$ ). An increase in crude mortality over time in ICU was observed only in oncology patients ( $p < 0.04$ ). For all patients, lack of prescription of antifungals despite knowledge of positive blood culture increased the risk of death. The odds of being infected by a given *Candida* species compared with *C. albicans* were uneven regarding age, gender, type of malignancy, hospitalization in ICU, central venous catheter, HIV status, intravenous drug addiction, and previous exposure to antifungal drugs. Compared with *C. albicans*, *C. glabrata* (OR = 0.69 [0.54–0.89]) and *C. parapsilosis* (OR = 0.49 [0.35–0.67]) were associated with a decreased risk of death by day 8 and day 30.

**Conclusion:** The clinical context of underlying malignancy and hospitalization in ICU may be relevant to the initial management of candidemia.

**Keywords:** *Candida*, Echinocandins, Fluconazole, Hematological malignancy, Cancer, ICU, Non-*albicans* species

\*Correspondence: olivier.lortholary@pasteur.fr

<sup>1</sup> Institut Pasteur, Molecular Mycology Unit, French National Reference Center for Invasive Mycoses and Antifungals, CNRS URA3012, 25, rue du Dr. Roux, 75724 Paris Cedex 15, France  
Full author information is available at the end of the article

The members of the French Mycoses Study Group are listed in the “Acknowledgements” section and ESM 5.

**Take-home message:** The type of underlying malignancy (solid vs hematological) and hospitalization in vs outside ICU impact differentially on fungemia by different species of *Candida*.

## Introduction

Candidemia currently represent up to 10% of nosocomial bloodstream infections [1–3] with associated mortality, increased length of stay and cost [4]. It is therefore a public health concern everywhere [5]. Among the risk factors, hematological malignancies and solid tumors represent a large proportion [6, 7]. Many changes have occurred over the last decade with the increased incidence of fungemia due to *Candida glabrata* at least in some settings [8, 9], the availability of echinocandins

[10–12] and new broad-spectrum triazoles prophylaxis in hematology, the implementation of management guidelines [13, 14], and better suspicion/awareness of clinicians. Whether or not all these changes impact the characteristics and outcome of candidemia among adults with malignancy needs to be further investigated. Several retrospective monocentric studies described the local epidemiology of candidemia among patients with malignancy [15–17] and only two recent prospective studies concerned cancer patients [18, 19]. No study has ever analyzed the characteristics and outcome of infection in patients with solid tumor or hematological malignancy developing candidemia and the impact of their hospitalization in intensive care unit (ICU) [20].

We launched in 2002 a large prospective hospital-based surveillance program on patients developing candidemia in the Paris area and recently reported the characteristics of patients hospitalized in ICU [9] and of those who developed fungemia due to rare yeasts [21]. The goal of the present study was to characterize over more than a decade *Candida* spp. distribution and prognostic factors according to underlying malignancy and ICU hospitalization. We also determined if the context associated with non-*albicans* candidemia was suggestive enough to help the clinician with the first therapeutic choice.

## Materials and methods

### Population studied and isolates characterization

A sustainable active surveillance program on yeast fungemia (YEASTS program) was implemented with participation of 26 short-stay university hospitals in the Paris area. All blood cultures positive with yeasts were notified, with data completed on a standardized form, on a secured website. All isolates were sent to the French National Reference Center for Invasive Mycoses and Antifungals (NRCMA). There, purity and identification were assessed [22] and in vitro susceptibility testing performed according to the EUCAST procedure [23]. The current analysis concerns the incident episodes of candidemia recorded in patients aged at least 15 years old between October 2002 and December 2014, and due to *C. albicans*, *C. glabrata*, *C. tropicalis*, *C. parapsilosis* complex that includes *C. metapsilosis* and *C. orthopsilosis* (hereafter named *C. parapsilosis*), *C. krusei* (current name *Pichia kudriavzevii*), and *C. kefyr* (current name *Kluyveromyces marxianus*). Single and mixed (>1 species) infections were considered.

### Definitions

The date of candidemia was that of blood sampling (day 0). Patients were assigned to one of three groups: hematological malignancy, solid tumor (“oncology”), or “no malignancy”. Surgery and antifungal preexposure

(whatever dosage and duration) occurring within 30 days prior to candidemia were recorded. First-line antifungal therapy was analyzed only for patients for whom the positivity of the blood culture was known before death and was categorized into four groups: “fluconazole”, “echinocandins”, “other treatments” (all other antifungals and drug combinations), and “no antifungals”. Antifungal drug resistance was defined as minimum inhibitory concentration (MIC)  $\geq 8$  mg/L [24] for fluconazole and MIC  $>0.25$  mg/L for caspofungin [25].

### Statistical analysis

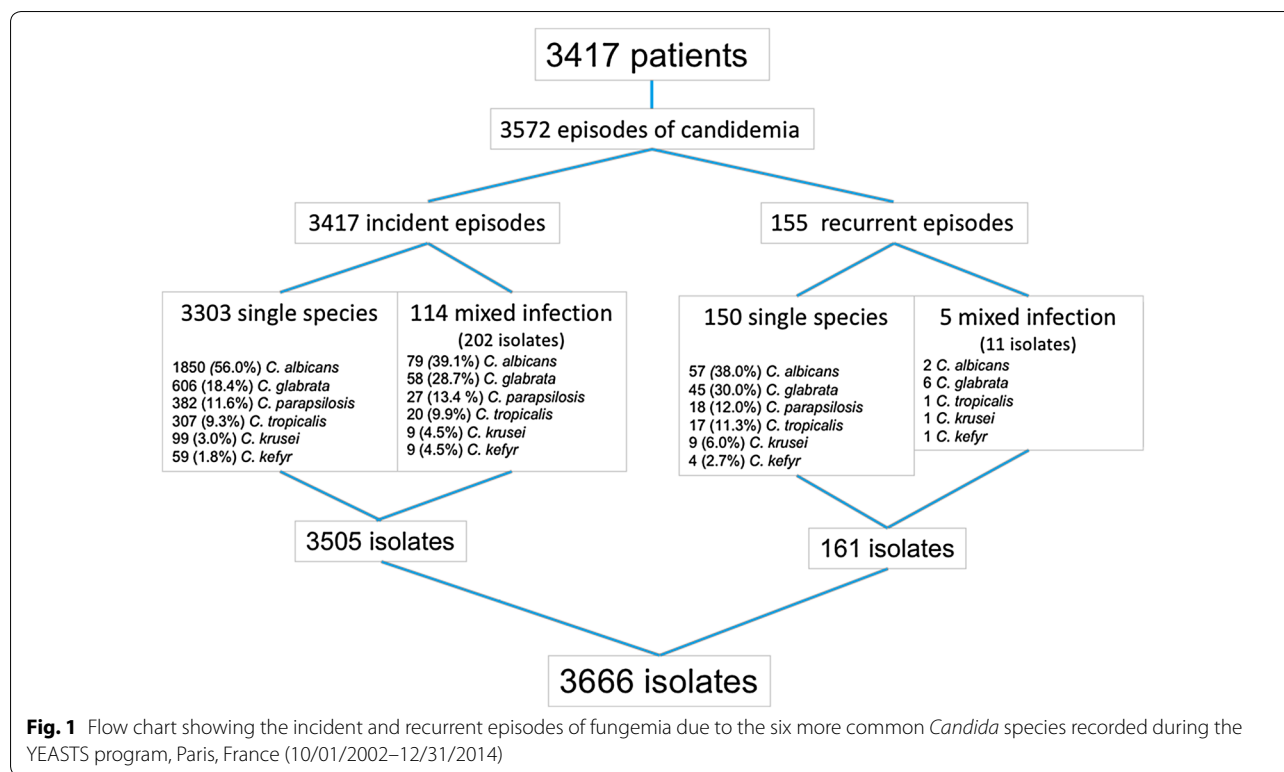
Univariate analysis was based on Chi2 or Fisher’s exact test when needed for discrete variables. Kruskal–Wallis test was used to compare means for groups with unequal variances. Chi2 test for trends was used to determine trends over time. In order to identify risks factors for fungemia due to non-*albicans Candida* species, a multinomial regression analysis was performed that analyzed parameters suggesting infection by a given species or by multiple species based on information available at the time of the positive blood culture. The most common species, i.e., *C. albicans*, was used as reference to avoid blurring the picture by changing the reference for each species. All baseline variables representing pre-existing conditions before fungemia were first included in a full model and only risk factors significantly associated ( $p < 0.05$ ) with at least one species were kept in the final model adjusted on the year of fungemia.

To identify risk factors associated with death (crude death rate at day 30 or day 8), backward stepwise logistic regression models adjusted for the hospital and the year of inclusion were used for all patients and the three groups. First, non-colinear covariates with a  $p$  value under 0.25 in the univariate analysis were simultaneously entered into the models and then removed one by one until all of the covariates remaining in the reduced models had a  $p$  value under 0.05. Survivals were compared by the logrank test. Data were analyzed using Stata Statistical Software (version 12.0; College Station, TX).

## Results

### Characteristics of patients with candidemia according to the presence of malignancy and/or hospitalization in ICU

A total of 3417 adults were diagnosed with candidemia, for a total of 3572 episodes (Fig. 1). Almost half (47.2%) were hospitalized in ICU (Table 1). The 586 hematological malignancies consisted mainly of lymphoma (41.8%) and acute leukemia (AL, 33.5%). Allogeneic hematopoietic cell transplantation (HSCT, 10.9%) and graft versus host disease (5.1%) were recorded in hematology. The 1164 solid tumors involved the digestive (45.7%),



genital (12.3%), or urinary (8.9%) tract, or the ear, nose, and throat area (11.0%). Almost half (46.5%) of the 1667 patients with no malignancy had recent surgery involving the digestive tract (364/775, 46.9%) or cardiovascular invasive procedures (200/775, 25.8%), and the majority had a central venous catheter (64.6%). Hospitalization in ICU was significantly more frequent in patients with no malignancy (1080/1667, 64.8%) compared to oncology (335/1164, 28.8%) or hematology (199/586, 34.0%) patients ( $p < 0.0001$ ). Recent surgery was overall significantly more frequently recorded in ICU vs. outside ICU (Tables 1, S1), especially for patients with lymphoma (Table S2) and those with digestive tumors (Table S3).

The most frequent first-line treatment was fluconazole (51.2%) or echinocandin (29.7%) with major differences according to the underlying disease and stay in ICU (Tables 1, S1–S3). Prescriptions were similar in vs. outside ICU for hematology patients but not in others. The proportion of patients who received no antifungal drug was similar in the three groups whether in or outside ICU.

#### Species distribution and impact of ICU hospitalization and underlying disease

Of the 3666 isolates recovered, 737 (20.1%) were considered resistant to fluconazole. The vast majority (89%) was composed of *C. glabrata* (76.1% of them) and

*C. krusei* (all), and a few isolates of *C. parapsilosis* (7.5%), *C. tropicalis* (8.4%), and *C. albicans* (0.8%). A caspofungin MIC  $>0.25$   $\mu\text{g/mL}$  concerned 211 (6.5%) isolates including 41.5% of the *C. parapsilosis*, and few *C. albicans* and *C. tropicalis* (0.7% each), *C. glabrata* (2.5%), *C. krusei* (2.6%), and *C. kefyr* (1.7%). The proportion of patients preexposed to antifungals was significantly higher in hematology (Table 1), especially those with AL (Table S2), with no impact of ICU hospitalization. In oncology, the proportion of breakthrough infections was low and similar to that recorded in patients with no malignancy. However, oncology patients had twice as many breakthrough infections when in ICU compared to outside ICU, whereas the figures did not change for patients with no malignancy (Table S1).

Mixed infection accounted for 3.3% of all episodes, less frequently in hematology patients (Table 1). Species involved differed significantly ( $p < 0.001$ ) between single and mixed infection, the latter involving predominantly *C. albicans* and *C. glabrata* (Fig. 1). The interval between sampling and blood culture positivity varied significantly with almost 40% of the cultures recovered after more than 3 days for *C. glabrata* compared to more than 40% of the cultures positive in less than 24 h for *C. krusei*, *C. kefyr*, and *C. tropicalis* ( $p < 0.0001$ , Fig. 3).

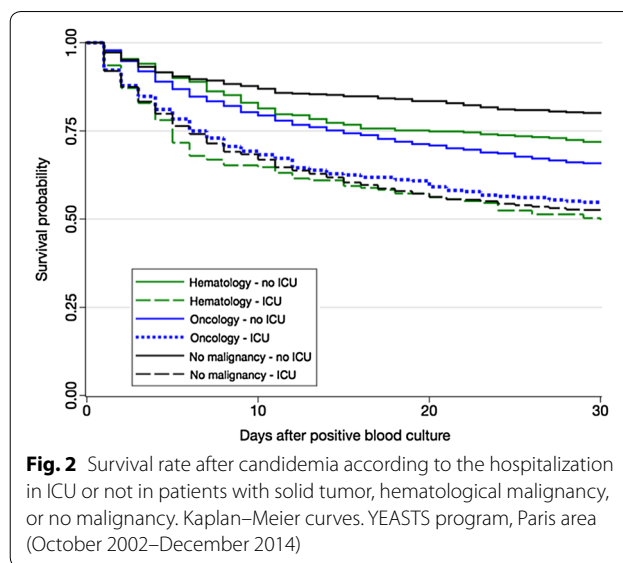
For single infections, species distribution varied significantly with the underlying condition and stay in

ICU (Tables 1, S1–S3). *C. albicans* was the predominant species in all settings, but its proportion was significantly lower in hematology patients compared to those with solid tumor or no malignancy. This decrease was observed specifically in patients with AL, especially in ICU where *C. albicans* accounted for only 29.4% of the species compared to more than 50% in patients with other hematological malignancies including lymphoma. *Candida tropicalis* was almost as frequent as *C. albicans* in ICU patients with AL, and almost twice as much as in the other hematology patients outside ICU. ICU patients with lymphoma had very few *C. parapsilosis* infections compared to those outside ICU, or to AL patients (Table S2), as did ICU patients with non-digestive tumors compared to those with digestive tumors, or to all oncology patients outside ICU (Table S3). Overall, *C. parapsilosis* was less frequent in ICU than outside ICU in both hematology and oncology patients (Table 1). *Candida glabrata* was more frequent in oncology than in hematology patients and those with no malignancy, and even more in ICU. The proportion of *C. glabrata* was significantly higher outside ICU in oncology patients with digestive tumor than in those without, whereas it was similar in ICU. Finally, *C. kefyr* was more frequent in hematology patients, whether in ICU or not (Table 1).

The multinomial analysis uncovered independent factors that were associated with a given species (Table 2). Relative to patients infected by *C. albicans*, those infected by *C. glabrata* were older, had more frequent digestive tumors, and were less likely to have HIV infection. Those infected by *C. krusei* had more frequent non-digestive tumors, AL, or lymphoma, and less frequent surgery. Those infected by *C. parapsilosis* were more often younger and male, had a central venous catheter, and were less likely to be hospitalized in ICU or to have HIV infection. Those with *C. tropicalis* were more often male, more likely suffering from AL or other hematological malignancies. Those with *C. kefyr* were more likely to have AL and be 65–79 years old. Multiple species infection were more likely in the context of intravenous drug addiction, with a trend to be more likely in patients with central venous catheter and non-digestive solid tumors. Finally, preexposure to fluconazole was independently associated with infection by *C. glabrata* and *C. krusei* while preexposure to caspofungin predisposed to infection by *C. glabrata*, *C. krusei*, and *C. parapsilosis*.

### Outcome

Survival was significantly decreased in ICU (Fig. 2, logrank test  $p < 0.0001$ ). The crude death rate at day 30 was overall increased in ICU and this was related to an increased rate in patients with no malignancy (Tables 1, S1). The crude day 30 death rate was similar when



hospitalized in ICU and not influenced by the underlying malignancy (Tables S2–S3). The crude death rate at day 30 outside ICU was significantly increased in oncology patients compared to others, and this was related to a significantly increase in delayed death rate (Table 1).

We then analyzed the independent risk factors for death following fungemia due to single species according to its timing and to the groups (Tables 3, S4). For the entire population and each group, the lack of antifungal drug prescription and hospitalization in ICU (the latter not for early death in hematology and oncology patients) were identified as risk factors for death. The odds of death at day 30 was increased in oncology patients compared to patients with no malignancy. Compared to *C. albicans*, *C. glabrata* and *C. parapsilosis* were associated with a decreased risk of day 8 and day 30 deaths (all patients, oncology patients), while only *C. parapsilosis* was in patients with no malignancy (day 8 and day 30). Of note, the risk of early death was 3.07 ( $p = 0.052$ ) for *C. kefyr* infection in oncology patients. The species had no influence on the risk of death for hematology patients. Recent surgery was associated with a decreased risk of day 8 (all patients) and day 30 death (all patients, oncology, no malignancy), while preexposure to echinocandins was associated with an increased risk of death in patients with no malignancy.

### Trends over a decade

There was no significant trend over time for the major characteristics of the patients, including the proportion of older patients, lymphoma, and HSCT among the hematological malignancies, or of digestive origin among the solid tumors. Preexposure to antifungals did

**Table 1 Comparison of major characteristics according to hospitalization outside ( $n = 1803$ ) or in ( $n = 1614$ ) intensive care unit (ICU) in three major populations (hematological malignancy, solid tumor, or no malignancy) of adult patients with incident candidemia due to common species (YEASTS program, Paris area, Oct 2002–Dec 2014)**

	Outside ICU				In ICU			
	Hematology ( $n = 387$ )	Oncology ( $n = 829$ )	No malignancy ( $n = 587$ )	$p$	Hematology ( $n = 199$ )	Oncology (335)	No malignancy ( $n = 1080$ )	$p$
Age (mean $\pm$ SD)	<b>54 <math>\pm</math> 18</b>	<b>63 <math>\pm</math> 14</b>	<b>60 <math>\pm</math> 21</b>	0.0001	<b>57 <math>\pm</math> 16</b>	<b>64 <math>\pm</math> 13</b>	<b>59 <math>\pm</math> 17</b>	0.0001
Male gender	217 (56.1%)	496 (59.8%)	347 (59.1%)	0.455	133 (56.8%)	209 (62.4%)	652 (60.4%)	0.214
Recent surgery ( $<30$ days)	<b>20 (5.2%)</b>	<b>295 (35.6%)</b>	<b>246 (41.9%)</b>	$<0.0001$	<b>20 (10.1%)</b>	<b>194 (57.9%)</b>	<b>529 (49.0%)</b>	$<0.0001$
Central venous catheter	<b>329 (85.0%)</b>	<b>657 (79.3%)</b>	<b>269 (45.8%)</b>	$<0.0001$	<b>165 (82.9%)</b>	<b>268 (80.0%)</b>	<b>808 (74.8%)</b>	0.014
Previous antifungal treatment	<b>72 (18.6%)</b>	<b>39 (4.7%)</b>	<b>41 (7.0%)</b>	$<0.0001$	<b>49 (24.6%)</b>	<b>32 (9.6%)</b>	<b>96 (8.9%)</b>	$<0.0001$
Fluconazole	22 (5.7%)	30 (3.6%)	25 (4.3%)	0.252	19 (9.6%)	20 (6.0%)	58 (5.4%)	0.075
Echinocandins	<b>30 (7.8%)</b>	<b>6 (0.7%)</b>	<b>8 (1.4%)</b>	$<0.0001$	<b>17 (8.5%)</b>	<b>7 (2.1%)</b>	<b>22 (2.0%)</b>	$<0.0001$
Type of infection								
Single pathogen	( $n = 382$ )	( $n = 789$ )	( $n = 568$ )		( $n = 195$ )	( $n = 321$ )	( $n = 1048$ )	
<i>C. albicans</i>	<b>187 (49.0%)</b>	<b>444 (56.3%)</b>	<b>339 (59.7%)</b>	0.005	97 (49.7%)	179 (55.8%)	604 (57.6%)	0.122
<i>C. glabrata</i>	<b>42 (11.0%)</b>	<b>156 (19.8%)</b>	<b>97 (17.1%)</b>	0.001	<b>32 (16.4%)</b>	<b>79 (24.6%)</b>	<b>200 (19.1%)</b>	0.041
<i>C. parapsilosis</i>	<b>64 (16.8%)</b>	<b>91 (11.5%)</b>	<b>78 (13.7%)</b>	0.047	14 (7.2%)	22 (6.9%)	113 (10.8%)	0.054
<i>C. tropicalis</i>	<b>54 (14.1%)</b>	<b>62 (7.9%)</b>	<b>44 (7.8%)</b>	0.001	<b>34 (17.4%)</b>	<b>20 (6.2%)</b>	<b>93 (8.9%)</b>	$<0.0001$
<i>C. krusei</i>	<b>20 (5.2%)</b>	<b>24 (3.0%)</b>	<b>7 (1.2%)</b>	0.002	<b>10 (5.1%)</b>	<b>14 (4.4%)</b>	<b>24 (2.3%)</b>	0.035
<i>C. kefyr</i>	<b>15 (9.9%)</b>	<b>12 (1.5%)</b>	<b>3 (0.5%)</b>	$<0.0001$	<b>8 (4.1%)</b>	<b>7 (2.2%)</b>	<b>14 (1.3%)</b>	0.028
Multiple pathogens	<b>5 (1.3%)</b>	<b>40 (4.8%)</b>	<b>19 (3.2%)</b>	0.007	4 (2.0%)	14 (4.2%)	32 (3.0%)	0.341
First-line treatment after diagnosis	( $n = 348$ )	( $n = 709$ )	( $n = 275$ )		( $n = 111$ )	( $n = 265$ )	( $n = 809$ )	
Fluconazole	<b>104 (29.9%)</b>	<b>460 (64.9%)</b>	<b>275 (58.9%)</b>	$<0.0001$	<b>45 (28.5%)</b>	<b>121 (49.6%)</b>	<b>411 (50.8%)</b>	$<0.0001$
Echinocandins	<b>144 (41.4%)</b>	<b>135 (19.0%)</b>	<b>107 (22.9%)</b>	$<0.0001$	67 (42.4%)	86 (35.3%)	273 (33.8%)	0.114
Others (including combination)	<b>74 (21.3%)</b>	<b>52 (7.3%)</b>	<b>53 (11.4%)</b>	$<0.0001$	<b>36 (22.8%)</b>	<b>27 (11.1%)</b>	<b>75 (9.3%)</b>	$<0.0001$
No treatment	26 (4.5%)	62 (8.7%)	32 (6.9%)	0.475	10 (6.3%)	10 (4.1%)	50 (6.2%)	0.451
Death rate <sup>a</sup>								
Overall death at day 30	<b>111/377(29.4%)</b>	<b>265/760 (34.9%)</b>	<b>119/529 (22.5%)</b>	$<0.0001$	98/191 (51.3%)	150/312 (48.1%)	524/1036 (50.6%)	0.699
Early death ( $<$ day 8) <sup>b</sup>	57/376 (15.2%)	130/757 (17.2%)	68/525 (13.0%)	0.119	65/190 (34.2%)	94/310 (30.3%)	334/1030 (32.4%)	0.645
Late death (between days 8–30)	<b>53/376 (14.1%)</b>	<b>132/757 (17.4%)</b>	<b>47/525 (9.0%)</b>	$<0.0001$	32/190 (16.8%)	54/310 (17.4%)	184/1030 (17.9%)	0.937

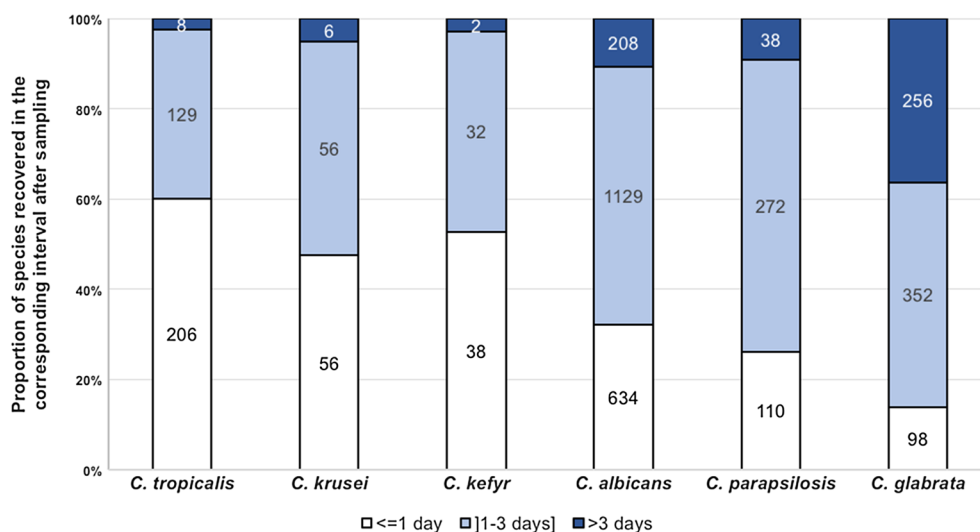
Data are mean  $\pm$  SD or  $n/N$  (%)—denominator is specified when data are missing

<sup>a</sup> Denominator represents the number of patients for whom the positivity of the blood culture was known before death and/or for whom the information about treatment was recorded

<sup>b</sup> Precise date of death was missing, preventing definition of “early death” or “late death” in the corresponding patients

not vary for fluconazole, whereas preexposure to echinocandins significantly increased in the global population, and in the three groups, but only in ICU (chi<sup>2</sup> for trends,  $p = 0.015$  for hematology,  $p = 0.022$  for oncology, and  $p = 0.0395$  for no malignancy). The proportion of *C. parapsilosis* significantly decreased in patients with solid tumor (from 15.4% to 5.6%,  $p = 0.026$ ). There was no increase in the proportion of resistant isolates

among those of species intrinsically susceptible to fluconazole or caspofungin. After candidemia diagnosis, fluconazole first-line prescription decreased (from 59.8% to 29.8%,  $p < 0.0001$ ), while echinocandin first-line therapy increased (from 4.9% to 57.6%,  $p < 0.0001$ ), with the same trends observed when analyzing specifically the three groups. Finally, there was no trend in crude mortality among hematology patients in or outside ICU. There



**Fig. 3** Proportion of each species identified in blood cultures found positive less than 24 h, between 1 and 3 days, and more than 3 days after sampling

was a significant trend towards an increase in day 30 (from 18.2% to 58.3%,  $p = 0.0321$ ) and day 8 (from 9.1% to 41.7%,  $p = 0.0047$ ) deaths among oncology patients in ICU, but not outside ICU, and no trend observed among patients with no malignancy.

## Discussion

We used a prospective multicentric hospital-based surveillance program to analyze whether fungemia due to common *Candida* species differed depending on the underlying disease and what the impact of ICU hospitalization was. Malignancies currently represent approximately 35% of underlying diseases during candidemia [7, 26] lower than what we found (50.5%). Candidemia represents approximately 30% of invasive fungal infections in hematology patients [27], mostly in those with AL [28, 29], whereas a predominance of lymphoma was observed here. The incidence of fungemia (90% candidemia) is reported at 0.23%/145,030 admissions in 13 European cancer centers [19] and at 0.14% in nine hematology centers in Greece [18]. In France, an incidence of 2.5/100,000 population/year was reported with significant increase in the hematology and oncology populations [30].

Overall, a higher proportion of *C. tropicalis* and *C. krusei* [7, 31–34], *C. kefyr* [35], and sometimes *C. glabrata* [32] fungemia is found in hematology, and multi-species episodes are more frequent in oncology [36]. We and others evidenced the impact of preexposure to antifungals on the distribution of *Candida* species [22, 37, 38], and that duration of fluconazole exposure influences the risk of *C. krusei* fungemia in hematology [6, 39]. We observed less *C. albicans* in hematology, that being related to AL

patients. Less *C. parapsilosis* was observed in ICU, which may reflect more drastic hygiene procedures there. These observations were reinforced by those of the multinomial analysis demonstrating independent factors of being infected by a given *Candida* species.

Crude mortality at day 30 in hematology patients was comparable to former series [18, 40]. It was higher for oncology patients than for the other two groups outside ICU, and hospitalization in ICU increased mortality. One may speculate that the better early outcome found in patients with AL outside ICU may be related to early empiric antifungal therapy administered during prolonged febrile neutropenia. However, crude mortality in ICU was not influenced by underlying disease, which suggests that organ failure(s) was (were) probably the major determinant(s) of outcome. The worrisome trend in the evolution of candidemia mortality that we reported in ICU [9] is explained by the outcome in oncology patients, suggesting that specific actions should now be focused on this currently rising population. One can hypothesize that the oncology patients sent to ICU now have more severe illnesses. Using the multivariate analysis, we showed that the independent risk factors for death varied depending on the underlying disease. In hematology patients, the species recovered from blood culture did not influence death nor did the type of hematological malignancy, while the age and hospitalization in ICU did. In oncology patients and in patients with no malignancy, other factors influenced survival.

Being infected by *C. parapsilosis* or *C. glabrata* was independently associated with a more favorable outcome. In the multinomial analysis, we found that, in comparison

**Table 2 Risk factors for fungemia due to *C. glabrata*, *C. parapsilosis*, *C. tropicalis*, *C. krusei*, *C. kefyr* or multiple species in reference to fungemia due to *C. albicans* (n = 1850), multivariate multinomial regression analysis (YEASTS program, Paris area, October 2002–December 2014)**

	<i>C. glabrata</i>			<i>C. krusei</i>			<i>C. parapsilosis</i>		
	OR	95% CI	p	OR	95% CI	p	OR	95% CI	p
Male sex	0.86	0.71–1.04	0.116	1.37	0.88–2.14	0.163	<b>1.58</b>	<b>1.24–2.01</b>	<0.0001
<b>Age (years)</b>									
<45	1			1			1		
45–64	1.25	0.92–1.70	0.146	0.86	0.09–1.53	0.615	<b>0.67</b>	<b>0.49–0.90</b>	0.007
65–79	1.34	0.98–1.84	0.064	0.68	0.36–1.29	0.238	<b>0.46</b>	<b>0.33–0.65</b>	<0.0001
≥80	<b>1.77</b>	<b>1.23–2.56</b>	0.002	0.69	0.28–1.74	0.436	<b>0.42</b>	<b>0.26–0.67</b>	<0.0001
ICU	1.22	0.99–1.50	0.060	1.43	0.91–2.27	0.122	<b>0.64</b>	<b>0.49–0.82</b>	0.001
Recent surgery (<30 days)	0.94	0.76–1.14	0.516	<b>0.55</b>	<b>0.33–0.92</b>	0.024	0.89	0.69–1.15	0.387
<b>Underlying disease</b>									
No malignancy	1			1			1		
Digestive tumor	<b>1.62</b>	<b>1.24–2.12</b>	<0.0001	1.48	0.70–3.12	0.304	0.79	0.54–1.14	0.206
Other solid tumor	1.01	0.76–1.33	0.948	<b>2.45</b>	<b>1.35–4.45</b>	0.003	0.75	0.53–1.06	0.101
Acute leukemia	1.11	0.66–1.88	0.682	<b>3.36</b>	<b>1.49–7.55</b>	0.003	1.22	0.74–2.00	0.440
Lymphoma	0.81	0.54–1.24	0.338	<b>2.28</b>	<b>1.09–4.76</b>	0.028	0.66	0.41–1.07	0.095
Other hematological malignancy	0.60	0.34–1.06	0.079	1.48	0.53–4.15	0.456	0.78	0.43–1.39	0.394
Central venous catheter	0.88	0.71–1.09	0.244	1.30	0.75–2.26	0.344	<b>1.44</b>	<b>1.08–1.92</b>	0.012
HIV infection	0.55	0.31–0.99	0.046	0.36	0.10–1.27	0.114	<b>0.50</b>	<b>0.27–0.94</b>	0.032
Intravenous drug addiction	1.04	0.34–3.21	0.941	NC			0.36	0.08–1.62	0.183
<b>Preexposure to antifungal drugs</b>									
Fluconazole	<b>2.42</b>	<b>1.63–3.59</b>	<0.0001	<b>6.17</b>	<b>3.44–11.07</b>	<0.0001	1.03	0.58–1.85	0.919
Echinocandins	<b>3.45</b>	<b>1.88–6.33</b>	<0.0001	<b>3.70</b>	<b>1.40–9.80</b>	0.009	<b>5.79</b>	<b>3.22–10.43</b>	<0.0001
	<i>C. tropicalis</i>			<i>C. kefyr</i>			Multiple species		
	OR	95% CI	p	OR	95% CI	p	OR	95% CI	p
Male sex	<b>1.51</b>	<b>1.16–1.97</b>	0.002	0.90	0.52–1.55	0.706	0.95	0.64–1.42	0.812
<b>Age (years)</b>									
<45	1			1			1		
45–64	1.32	0.91–1.93	0.143	1.84	0.72–4.73	0.201	1.01	0.54–1.89	0.963
65–79	1.14	0.95–2.10	0.085	<b>3.18</b>	<b>1.24–8.16</b>	0.016	1.11	0.58–2.12	0.754
≥80	0.99	0.58–1.71	0.982	0.77	0.15–4.07	0.762	1.51	0.70–3.24	0.289
ICU	1.08	0.82–1.41	0.594	1.56	0.88–2.78	0.132	0.96	0.62–1.48	0.839
Recent surgery (<30 days)	0.83	0.62–1.10	0.200	0.83	0.43–1.58	0.567	0.96	0.63–1.47	0.867
<b>Underlying disease</b>									
No malignancy	1			1			1		
Digestive tumor	0.73	0.47–1.14	0.169	1.93	0.82–4.58	0.134	1.52	0.85–2.69	0.155
Other solid tumor	0.98	0.68–1.43	0.936	1.63	0.71–3.76	0.248	1.70	1.00–2.90	0.051
Acute leukemia	<b>4.16</b>	<b>2.58–6.70</b>	<0.0001	<b>12.36</b>	<b>5.15–29.64</b>	<0.0001	0.82	0.24–2.83	0.753
Lymphoma	1.28	0.79–2.07	0.318	2.55	0.93–7.00	0.069	0.14	0.02–1.04	0.055
Other hematological malignancy	<b>1.71</b>	<b>1.01–3.06</b>	<b>0.044</b>	1.31	0.28–6.04	0.732	1.25	0.46–3.36	0.663
Central venous catheter	1.03	0.77–1.39	0.822	0.75	0.40–1.41	0.373	1.66	1.00–2.76	0.052
HIV infection	0.95	0.51–1.75	0.857	0.46	0.59–3.61	0.461	0.82	0.27–2.50	0.730
Intravenous drug addiction	1.74	0.56–5.41	0.341	NC			<b>8.31</b>	<b>2.82–24.49</b>	<0.0001
<b>Preexposure to antifungal drugs</b>									
Fluconazole	1.14	0.63–2.08	0.668	1.95	0.67–5.76	0.223	0.50	0.12–2.08	0.340
Echinocandins	0.33	0.08–1.43	0.137	2.74	0.75–10.09	0.129	1.59	0.35–7.22	0.551

OR adjusted odd ratio for year, 95% CI odd ratio 95% confidence interval, NC non-calculable



**Table 3 Independent factors associated with death before day 8 or before day 30 in all adult patients with incident episode of fungemia due to single isolate of common *Candida* species (YEATS program, Paris area, 2002–2014)**

	Death before day 8 <sup>a</sup>			Death before day 30 <sup>b</sup>			
	OR <sup>c</sup>	95% CI	<i>p</i>	OR <sup>c</sup>	95% CI	<i>p</i>	
Age category (years)							
<45	1			1			
45–64	1.39	0.94–2.05	0.101	0.0073	<b>1.59</b>	<b>1.20–2.09</b>	0.001
65–79	<b>1.76</b>	<b>1.18–2.62</b>	0.005		<b>2.13</b>	<b>1.60–2.84</b>	<0.0001
≥80	<b>2.11</b>	<b>1.30–3.41</b>	0.002		<b>2.92</b>	<b>2.05–4.15</b>	<0.0001
Hospitalization in ICU	<b>2.39</b>	<b>1.84–3.12</b>	<0.0001		<b>2.47</b>	<b>2.03–3.01</b>	<0.0001
Recent surgery (≤30 days)	<b>0.75</b>	<b>0.57–0.97</b>	0.031		<b>0.66</b>	<b>0.54–0.80</b>	<0.0001
Underlying disease							
No malignancy					1		
Digestive tumor					<b>1.42</b>	<b>1.08–1.85</b>	0.012
Non-digestive tumor					<b>1.42</b>	<b>1.10–1.84</b>	0.007
Acute leukemia					1.06	0.70–1.62	0.773
Lymphoma					1.25	0.88–1.78	0.214
Other hematological malignancy					0.99	0.64–1.56	0.982
Species recovered from blood culture							
<i>C. albicans</i>					1		
<i>C. glabrata</i>	<b>0.61</b>	<b>0.43–0.89</b>	0.009		<b>0.69</b>	<b>0.54–0.89</b>	0.004
<i>C. parapsilosis</i>	<b>0.30</b>	<b>0.17–0.52</b>	<0.0001	<0.0001	<b>0.49</b>	<b>0.35–0.67</b>	<0.0001
<i>C. tropicalis</i>	1.00	0.67–1.49	0.999		1.00	0.74–1.34	0.987
<i>C. krusei</i>	1.24	0.62–2.44	0.544		1.52	0.91–2.54	0.106
<i>C. kefyr</i>	1.79	0.84–3.80	0.132		1.36	0.74–2.53	0.325
Initial antifungal treatment							
Fluconazole alone					1		
Echinocandin alone	1.02	0.74–1.41	0.909	<0.0001	1.08	0.86–1.36	0.517
Other treatments	0.75	0.46–1.21	0.234		0.84	0.62–1.15	0.283
No antifungal drug	<b>10.96</b>	<b>7.60–15.81</b>	<0.0001		<b>4.94</b>	<b>3.51–6.95</b>	<0.0001

<sup>a</sup> Other variables included in full model (with *p* < 0.25 in univariate analysis of early death) not conserved because not significant: allo-BMT, male gender, and type of underlying disease

<sup>b</sup> Male gender included in the model but not conserved because not significant

<sup>c</sup> OR adjusted for hospital and year (introduced in the model as dummy variable)

to those infected by *C. albicans*, patients with *C. glabrata* infections were more often very old, more often had digestive tumors, and were more often preexposed to echinocandins or fluconazole. These factors were also independently associated with death at day 30. It is possible that the observation by others [41] that patients infected by *C. glabrata* have a higher crude mortality can be related to specificity of the cohort (249 patients with candidemia, 23 infected by *C. glabrata*) studied in several centers in 1992–1994 and to preexposure to antifungals, reflecting more severe cases as already described in the ICU population [42] rather than to the species itself. Evolution of patients' management may indeed at least partially explain the discrepant results.

Recent studies found that antifungal treatment was an independent factor decreasing both early and late death [31] and that echinocandins as first-line therapy reduced

death rate [43]. As already reported [44] and shown here, a major observation is that a constant risk factor for death was the lack of antifungal prescription despite knowledge of the blood culture positivity, with no influence of the initial antifungal choice. In contrast to what is observed in the USA [7, 45], resistance to antifungals is not yet of concern in our area, with overall less than 1% resistance to caspofungin in isolates not identified as *C. parapsilosis*, less than 2.3% resistance to fluconazole in isolates not identified as *C. krusei* or *C. glabrata*, and no increase in these figures over time. Thus, we would recommend early prescription of antifungals based on the most likely species and the known susceptibility profile of its wild-type isolates rather than waiting for the precise identification and a fortiori for MIC determination. It may later be appropriate to switch to a more adapted treatment as recently validated in ICU [46].

The limitations of our database are the restriction to one city, the lack of information regarding severity of illness, the duration of candidemic period, central venous catheter removal [26], lack of consideration of antifungal dosing issues [47–49], and delayed initiation of adequate antifungal therapy [47, 50, 51], concomitant mold infections, or bacteremia.

Even if we are fully aware that characteristics of candidemia are highly variable, especially in terms of species distribution, we think that our data are relevant for hematologists, oncologists, and ICU physicians practicing in the Western world. Indeed, characteristics and risk factors for death during candidemia differ in patients with hematological malignancies from those with solid tumors. Furthermore, the odds of infection by a given *Candida* species was influenced not only by host underlying disease but also by hospitalization in ICU and preexposure to antifungal drugs.

#### Electronic supplementary material

The online version of this article (doi:10.1007/s00134-017-4743-y) contains supplementary material, which is available to authorized users.

#### Author details

<sup>1</sup> Institut Pasteur, Molecular Mycology Unit, French National Reference Center for Invasive Mycoses and Antifungals, CNRS URA3012, 25, rue du Dr. Roux, 75724 Paris Cedex 15, France. <sup>2</sup> Université Paris Descartes, Hôpital Necker-Enfants malades, Service des Maladies Infectieuses et Tropicales, Centre d'Infectiologie Necker-Pasteur, APHP, IHU Imagine, Paris, France. <sup>3</sup> Laboratoire de Parasitologie-Mycologie, Hôpital Saint Louis, AP-HP, Université Paris Diderot, Paris, France.

#### Acknowledgements

The following investigators participated in the YEASTS program of the French Mycosis Study Group: Collection of data in each participating center: C. Bouges-Michel, S. Brun (hôpital Avicenne, Bobigny), I. Poilane (hôpital Jean Verdier, Bondy), J. Dunan (hôpital Ambroise Paré, Boulogne), S. Bretagne, F. Botterel (hôpital Henri Mondor, Créteil), N. Fauchet (Centre Intercommunal, Créteil), E. Forget (hôpital Beaujon, Clichy), C. Lawrence (hôpital Raymond Poincaré, Garches), C. Bonnal, A. Angoulvant (hôpital du Kremlin Bicêtre, Kremlin-Bicêtre), O. Eloy (Centre Hospitalier, Le Chesnay), M.-F. David, N. Khassiss, L. Milhaila (hôpital Paul Brousse, Villejuif), E. Chachaty (Institut Gustave Roussy, Villejuif), and in Paris: C. Chochillon (hôpital Bichat), A. Paugam, M.-T. Baixench (hôpital Cochin), M.-C. Escande (Institut Curie), M.-E. Bougnoux, Y. Sterckers, S. Challier (hôpital Necker), E. Dannaoui, V. Lavarde (hôpital Européen Georges Pompidou), A. Detry, B. Lmimouni, S. Brun, A. Fekkar (hôpital de la Pitié-Salpêtrière), J.-L. Poirot (hôpital Saint Antoine), C. Lacroix, A. Alanio, S. Bretagne (hôpital Saint Louis), D. Moissenet (hôpital Trousseau), M. Develoux (hôpital Tenon), S. Bonacorsi (hôpital Robert Debré). Technical analysis of the isolates at the National Reference Center for Invasive Mycoses and Antifungals: Dea Garcia-Hermoso, Dorothee Raoux-Barbot, Damien Hoinard, Catherine Blanc, Anne Boullié.

#### Compliance with ethical standards

#### Funding sources

The YEASTS program was supported in part by Santé Publique France and Institut Pasteur. The funders had no role in study design, data collection, analysis, or interpretation of data.

#### Ethics committee approval

The research described herein was carried out in compliance with French law and the Declaration of Helsinki (as adopted in 2000), and was approved by the Institut Pasteur institutional review board (IRB #2009-34). Approval of the

"Commission Nationale de l'Informatique et des Libertés" was obtained, ensuring that patients' data were kept anonymous according to French regulations.

#### Open Access

This article is distributed under the terms of the Creative Commons Attribution-NonCommercial 4.0 International License (<http://creativecommons.org/licenses/by-nc/4.0/>), which permits any noncommercial use, distribution, and reproduction in any medium, provided you give appropriate credit to the original author(s) and the source, provide a link to the Creative Commons license, and indicate if changes were made.

Received: 7 October 2016 Accepted: 23 February 2017

Published online: 20 March 2017

#### References

- Marchetti O, Bille J, Fluckiger U, Eggimann P, Ruef C, Garbino J, Calandra T, Glauser MP, Tauber MG, Pittet D, Fungal Infection Network of Switzerland (2004) Epidemiology of candidemia in Swiss tertiary care hospitals: secular trends, 1991–2000. *Clin Infect Dis* 38:311–320
- Marra AR, Camargo LF, Pignatari AC, Sukiennik T, Behar PR, Medeiros EA, Ribeiro J, Girao E, Correa L, Guerra C, Brites C, Pereira CA, Carneiro I, Reis M, de Souza MA, Tranchesi R, Barata CU, Edmond MB, Brazilian SCOPE Study Group (2011) Nosocomial bloodstream infections in Brazilian hospitals: analysis of 2563 cases from a prospective nationwide surveillance study. *J Clin Microbiol* 49:1866–1871
- Wisplinghoff H, Bischoff T, Tallent SM, Seifert H, Wenzel RP, Edmond MB (2004) Nosocomial bloodstream infections in US hospitals: analysis of 24,179 cases from a prospective nationwide surveillance study. *Clin Infect Dis* 39:309–317
- Zaoutis TE, Argon J, Chu J, Berlin JA, Walsh TJ, Feudtner C (2005) The epidemiology and attributable outcomes of candidemia in adults and children hospitalized in the United States: a propensity analysis. *Clin Infect Dis* 41:1232–1239
- Pfaller MA, Diekema DJ (2007) Epidemiology of invasive candidiasis: a persistent public health problem. *Clin Microbiol Rev* 20:133–163
- Arendrup MC, Sulim S, Holm A, Nielsen L, Nielsen SD, Knudsen JD, Drenck NE, Christensen JJ, Johansen HK (2011) Diagnostic issues, clinical characteristics, and outcomes for patients with fungemia. *J Clin Microbiol* 49:3300–3308
- Pfaller M, Neofytos D, Diekema D, Azie N, Meier-Kriesche HU, Quan SP, Horn D (2012) Epidemiology and outcomes of candidemia in 3648 patients: data from the prospective antifungal therapy [PATH Alliance(R)] registry, 2004–2008. *Diagn Microbiol Infect Dis* 74:323–331
- Arendrup MC, Dzajic E, Jensen RH, Johansen HK, Kjaeldgaard P, Knudsen JD, Kristensen L, Leitz C, Lemming LE, Nielsen L, Olesen B, Rosenvinge FS, Roder BL, Schonheyder HC (2013) Epidemiological changes with potential implication for antifungal prescription recommendations for fungaemia: data from a nationwide fungaemia surveillance programme. *Clin Microbiol Infect* 19:E343–353
- Lortholary O, Renaudat C, Sitbon K, Madec Y, Denoeud-Ndam L, Wolff M, Fontanet A, Bretagne S, Dromer F, French Mycosis Study Group (2014) Worrying trends in incidence and mortality of candidemia in intensive care units (Paris area, 2002–2010). *Intensive Care Med* 40:1303–1312
- Kuse ER, Chetchotisakd P, da Cunha CA, Ruhnke M, Barrios C, Raghunadharao D, Sekhon JS, Freire A, Ramasubramanian V, Demeyer I, Nucci M, Leelarasamee A, Jacobs F, Decruyenaere J, Pittet D, Ullmann AJ, Ostrosky-Zeichner L, Lortholary O, Koblinger S, Diekmann-Berndt H, Cornely OA, Micafungin Invasive Candidiasis Working Group (2007) Micafungin versus liposomal amphotericin B for candidaemia and invasive candidosis: a phase III randomised double-blind trial. *Lancet* 369:1519–1527
- Mora-Duarte J, Betts R, Rotstein C, Colombo AL, Thompson-Moya L, Smietana J, Lupinacci R, Sable C, Kartsonis N, Perfect J, Caspofungin Invasive Candidiasis Study Group (2002) Comparison of caspofungin and amphotericin B for invasive candidiasis. *N Engl J Med* 347:2020–2029
- Reboli AC, Rotstein C, Pappas PG, Chapman SW, Kett DH, Kumar D, Betts R, Wible M, Goldstein BP, Schranz J, Krause DS, Walsh TJ, Anidulafungin Study Group (2007) Anidulafungin versus fluconazole for invasive candidiasis. *N Engl J Med* 356:2472–2482

13. Cornely OA, Bassetti M, Calandra T, Garbino J, Kullberg BJ, Lortholary O, Meersseman W, Akova M, Arendrup MC, Arikian-Akdagli S, Bille J, Castagnola E, Cuenca-Estrella M, Donnelly JP, Groll AH, Herbrecht R, Hope WW, Jensen HE, Lass-Flörl C, Petrikos G, Richardson MD, Roilides E, Verweij PE, Viscoli C, Ullmann AJ, ESCMID Fungal Infection Study Group (2012) ESCMID guideline for the diagnosis and management of *Candida* diseases 2012: non-neutropenic adult patients. *Clin Microbiol Infect* 18(Suppl 7):19–37
14. Pappas PG, Kauffman CA, Andes D, Benjamin DK Jr, Calandra TF, Edwards JE Jr, Filler SG, Fisher JF, Kullberg BJ, Ostrosky-Zeichner L, Reboli AC, Rex JH, Walsh TJ, Sobel JD, Infectious Diseases Society of America (2009) Clinical practice guidelines for the management of candidiasis: 2009 update by the Infectious Diseases Society of America. *Clin Infect Dis* 48:503–535
15. Sabino R, Verissimo C, Brandao J, Alves C, Parada H, Rosado L, Paixao E, Videira Z, Tendeiro T, Sampaio P, Pais C (2010) Epidemiology of candidemia in oncology patients: a 6-year survey in a Portuguese central hospital. *Med Mycol* 48:346–354
16. Sipsas NV, Lewis RE, Tarrand J, Hachem R, Rolston KV, Raad II, Kontoyiannis DP (2009) Candidemia in patients with hematologic malignancies in the era of new antifungal agents (2001–2007): stable incidence but changing epidemiology of a still frequently lethal infection. *Cancer* 115:4745–4752
17. Zirkel J, Klinker H, Kuhn A, Abele-Horn M, Tappe D, Turnwald D, Einsele H, Heinz WJ (2012) Epidemiology of *Candida* blood stream infections in patients with hematological malignancies or solid tumors. *Med Mycol* 50:50–55
18. Gamaletsou MN, Walsh TJ, Zoutis T, Pagoni M, Kotsopoulou M, Voulgarelis M, Panayiotidis P, Vassilikopoulos T, Angelopoulou MK, Marangos M, Spyridonidis A, Kofteridis D, Pouli A, Sotiropoulos D, Matsouka P, Argyropoulou A, Perloretzou S, Leckerman K, Manaka A, Oikonomopoulos P, Daikos G, Petrikos G, Sipsas NV (2014) A prospective, cohort, multicentre study of candidaemia in hospitalized adult patients with haematological malignancies. *Clin Microbiol Infect* 20:050–57
19. Cornely OA, Gachot B, Akan H, Bassetti M, Uzun O, Kibbler C, Marchetti O, de Burghgraef P, Ramadan S, Pylikkanen L, Ayme L, Paesmans M, Donnelly JP, EORTC Infectious Diseases Group (2015) Epidemiology and outcome of fungemia in a cancer cohort of the Infectious Diseases Group (IDG) of the European Organization for Research and Treatment of Cancer (EORTC 65031). *Clin Infect Dis* 61:324–331
20. Lortholary O, Desnos-Ollivier M, Sitbon K, Renaudat C, Bretagne S, Dromer F (2016) Characteristics of candidemia in oncology differ from those in hematology: a prospective study over a decade. Poster presented at 26th ECCMID, Amsterdam, the Netherlands
21. Bretagne S, Renaudat C, Desnos-Ollivier M, Sitbon K, Lortholary O, Dromer F, on behalf of the French Mycosis Study Group (2017) Predisposing factors and outcome of uncommon yeast species-related fungaemia based on an exhaustive surveillance programme (2002–14). *J Antimicrob Chemother.* doi:10.1093/jac/dkx045
22. Lortholary O, Desnos-Ollivier M, Sitbon K, Fontanet A, Bretagne S, Dromer F, French Mycosis Study Group (2011) Recent exposure to caspofungin or fluconazole influences the epidemiology of candidemia: a prospective multicenter study involving 2,441 patients. *Antimicrob Agents Chemother* 55:532–538
23. Arendrup MC, Guinea J, Cuenca-Estrella M, Meletiadis J, Mouton JW, Lagrou K, Howard SJ, EUCAST-AFST (2015) EUCAST technical note on the EUCAST definitive document EDef 7.3: method for the determination of broth dilution minimum inhibitory concentrations of antifungal agents for yeasts. <http://www.eucast.org>. Accessed Feb 2017.
24. European Committee on Antibiotic Susceptibility Testing (2013) Fluconazole: rationale for the clinical breakpoints, version 2.0. <http://www.eucast.org>. Accessed Feb 2017.
25. Desnos-Ollivier M, Bretagne S, Raoux D, Hoinard D, Dromer F, Dannaoui E, European Committee on Antibiotic Susceptibility Testing (2008) Mutations in the *fkp1* gene in *Candida albicans*, *C. tropicalis*, and *C. krusei* correlate with elevated caspofungin MICs uncovered in AM3 medium using the method of the European Committee on Antibiotic Susceptibility Testing. *Antimicrob Agents Chemother* 52:3092–3098
26. Puig-Asensio M, Padilla B, Garnacho-Montero J, Zaragoza O, Aguado JM, Zaragoza R, Montejo M, Munoz P, Ruiz-Camps I, Cuenca-Estrella M, Almirante B, CANDIPOP, GEIH-GEOMICOMED (SEIMC), REIPI (2014) Epidemiology and predictive factors for early and late mortality in *Candida* bloodstream infections: a population-based surveillance in Spain. *Clin Microbiol Infect* 20:0245–254
27. Kontoyiannis DP, Marr KA, Park BJ, Alexander BD, Anaissie EJ, Walsh TJ, Ito J, Andes DR, Baddley JW, Brown JM, Brumble LM, Freifeld AG, Hadley S, Herwaldt LA, Kauffman CA, Knapp K, Lyon GM, Morrison VA, Papanicolaou G, Patterson TF, Perl TM, Schuster MG, Walker R, Wannemuehler KA, Wingard JR, Chiller TM, Pappas PG (2010) Prospective surveillance for invasive fungal infections in hematopoietic stem cell transplant recipients, 2001–2006: overview of the Transplant-Associated Infection Surveillance Network (TRANSNET) Database. *Clin Infect Dis* 50:1091–1100
28. Chen CY, Huang SY, Tsay W, Yao M, Tang JL, Ko BS, Chou WC, Tien HF, Hsueh PR (2012) Clinical characteristics of candidaemia in adults with haematological malignancy, and antimicrobial susceptibilities of the isolates at a medical centre in Taiwan, 2001–2010. *Int J Antimicrob Agents* 40:533–538
29. Pagano L, Caira M, Candoni A, Offidani M, Fianchi L, Martino B, Pastore D, Picardi M, Bonini A, Chierichini A, Fanci R, Caramatti C, Invernizzi R, Mattei D, Mitra ME, Melillo L, Aversa F, Van Lint MT, Faluccci P, Valentini CG, Girmenia C, Nosari A (2006) The epidemiology of fungal infections in patients with hematologic malignancies: the SEIFEM-2004 study. *Haematologica* 91:1068–1075
30. Bitar D, Lortholary O, Le Strat Y, Nicolau J, Coignard B, Tattevin P, Che D, Dromer F (2014) Population-based analysis of invasive fungal infections, France, 2001–2010. *Emerg Infect Dis* 20:1149–1155
31. Almirante B, Rodriguez D, Park BJ, Cuenca-Estrella M, Planes AM, Almela M, Mensa J, Sanchez F, Ayats J, Gimenez M, Saballs P, Fridkin SK, Morgan J, Rodriguez-Tudela JL, Warnock DW, Pahissa A, Barcelona Candidemia Project Study Group (2005) Epidemiology and predictors of mortality in cases of *Candida* bloodstream infection: results from population-based surveillance, barcelona, Spain, from 2002 to 2003. *J Clin Microbiol* 43:1829–1835
32. Hachem R, Hanna H, Kontoyiannis D, Jiang Y, Raad I (2008) The changing epidemiology of invasive candidiasis: *Candida glabrata* and *Candida krusei* as the leading causes of candidemia in hematologic malignancy. *Cancer* 112:2493–2499
33. Horn DL, Neofytos D, Anaissie EJ, Fishman JA, Steinbach WJ, Olyaei AJ, Marr KA, Pfaller MA, Chang CH, Webster KM (2009) Epidemiology and outcomes of candidemia in 2019 patients: data from the prospective antifungal therapy alliance registry. *Clin Infect Dis* 48:1695–1703
34. Munoz P, Giannella M, Fanciulli C, Guinea J, Valerio M, Rojas L, Rodriguez-Creixems M, Bouza E (2011) *Candida tropicalis* fungaemia: incidence, risk factors and mortality in a general hospital. *Clin Microbiol Infect* 17:1538–1545
35. Dufresne SF, Marr KA, Sydnor E, Staab JF, Karp JE, Lu K, Zhang SX, Lavallee C, Perl TM, Neofytos D (2014) Epidemiology of *Candida kefyr* in patients with hematologic malignancies. *J Clin Microbiol* 52:1830–1837
36. Nace HL, Horn D, Neofytos D (2009) Epidemiology and outcome of multiple-species candidemia at a tertiary care center between 2004 and 2007. *Diagn Microbiol Infect Dis* 64:289–294
37. Chow JK, Golan Y, Ruthazer R, Karchmer AW, Carmeli Y, Lichtenberg D, Chawla V, Young J, Hadley S (2008) Factors associated with candidemia caused by non-albicans *Candida* species versus *Candida albicans* in the intensive care unit. *Clin Infect Dis* 46:1206–1213
38. Rodriguez D, Almirante B, Cuenca-Estrella M, Rodriguez-Tudela JL, Mensa J, Ayats J, Sanchez F, Pahissa A, Barcelona Candidemia Project Study Group (2010) Predictors of candidaemia caused by non-albicans *Candida* species: results of a population-based surveillance in Barcelona, Spain. *Clin Microbiol Infect* 16:1676–1682
39. Schuster MG, Meibohm A, Lloyd L, Strom B (2013) Risk factors and outcomes of *Candida krusei* bloodstream infection: a matched, case-control study. *J Infect* 66:278–284
40. Slavin MA, Sorrell TC, Marriott D, Thursky KA, Nguyen Q, Ellis DH, Morrissey CO, Chen SC, Australian Candidemia Study, Australasian Society for Infectious Diseases (2010) Candidaemia in adult cancer patients: risks for fluconazole-resistant isolates and death. *J Antimicrob Chemother* 65:1042–1051
41. Viscoli C, Girmenia C, Marinus A, Collette L, Martino P, Vandercam B, Doyen C, Lebeau B, Spence D, Krcmery V, De Pauw B, Meunier F (1999) Candidemia in cancer patients: a prospective, multicenter surveillance study by the Invasive Fungal Infection Group (IFIG) of the European

- Organization for Research and Treatment of Cancer (EORTC). *Clin Infect Dis* 28:1071–1079
42. Leroy O, Bailly S, Gangneux JP, Mira JP, Devos P, Dupont H, Montravers P, Perrigault PF, Constantin JM, Guillemot D, Azoulay E, Lortholary O, Bensoussan C, Timsit JF, Csg Amar (2016) Systemic antifungal therapy for proven or suspected invasive candidiasis: the AmarCAND 2 study. *Ann Intensive Care* 6:2
  43. Andes DR, Safdar N, Baddley JW, Playford G, Reboli AC, Rex JH, Sobel JD, Pappas PG, Kullberg BJ, Mycoses Study Group (2012) Impact of treatment strategy on outcomes in patients with candidemia and other forms of invasive candidiasis: a patient-level quantitative review of randomized trials. *Clin Infect Dis* 54:1110–1122
  44. Tang HJ, Liu WL, Lin HL, Lai CC (2014) Epidemiology and prognostic factors of candidemia in cancer patients. *PLoS One* 9:e99103
  45. Cleveland AA, Farley MM, Harrison LH, Stein B, Hollick R, Lockhart SR, Magill SS, Derado G, Park BJ, Chiller TM (2012) Changes in incidence and antifungal drug resistance in candidemia: results from population-based laboratory surveillance in Atlanta and Baltimore, 2008–2011. *Clin Infect Dis* 55:1352–1361
  46. Bailly S, Leroy O, Montravers P, Constantin JM, Dupont H, Guillemot D, Lortholary O, Mira JP, Perrigault PF, Gangneux JP, Azoulay E, Timsit JF (2015) Antifungal de-escalation was not associated with adverse outcome in critically ill patients treated for invasive candidiasis: post hoc analyses of the AmarCAND2 study data. *Intensive Care Med* 41:1931–1940
  47. Zilberberg MD, Kollef MH, Arnold H, Labelle A, Micek ST, Kothari S, Shorr AF (2010) Inappropriate empiric antifungal therapy for candidemia in the ICU and hospital resource utilization: a retrospective cohort study. *BMC Infect Dis* 10:150
  48. Labelle AJ, Micek ST, Roubinian N, Kollef MH (2008) Treatment-related risk factors for hospital mortality in *Candida* bloodstream infections. *Crit Care Med* 36:2967–2972
  49. Pai MP, Turpin RS, Garey KW (2007) Association of fluconazole area under the concentration-time curve/MIC and dose/MIC ratios with mortality in nonneutropenic patients with candidemia. *Antimicrob Agents Chemother* 51:35–39
  50. Kollef M, Micek S, Hampton N, Doherty JA, Kumar A (2012) Septic shock attributed to *Candida* infection: importance of empiric therapy and source control. *Clin Infect Dis* 54:1739–1746
  51. Garey KW, Rege M, Pai MP, Mingo DE, Suda KJ, Turpin RS, Bearden DT (2006) Time to initiation of fluconazole therapy impacts mortality in patients with candidemia: a multi-institutional study. *Clin Infect Dis* 43:25–31