



HAL
open science

Urban climate versus global climate change – what makes the difference for dengue?

Renaud Misslin, Olivier Telle, Eric Daudé, Alain Vaguet, Richard E Paul

► To cite this version:

Renaud Misslin, Olivier Telle, Eric Daudé, Alain Vaguet, Richard E Paul. Urban climate versus global climate change – what makes the difference for dengue?. *Annals of the New York Academy of Sciences*, 2016, 1382 (1), pp.56 - 72. 10.1111/nyas.13084 . pasteur-01656598

HAL Id: pasteur-01656598

<https://pasteur.hal.science/pasteur-01656598v1>

Submitted on 5 Dec 2017

HAL is a multi-disciplinary open access archive for the deposit and dissemination of scientific research documents, whether they are published or not. The documents may come from teaching and research institutions in France or abroad, or from public or private research centers.

L'archive ouverte pluridisciplinaire **HAL**, est destinée au dépôt et à la diffusion de documents scientifiques de niveau recherche, publiés ou non, émanant des établissements d'enseignement et de recherche français ou étrangers, des laboratoires publics ou privés.



Distributed under a Creative Commons Attribution - NonCommercial 4.0 International License

**Urban climate versus global climate change – what makes
the difference for dengue?**

Journal:	<i>Annals of the New York Academy of Sciences</i>
Manuscript ID	annals-1711-000.R1
Manuscript Type:	Review
Date Submitted by the Author:	n/a
Complete List of Authors:	Misslin, Renaud; Centre National de la Recherche Scientifique, UMR 6266 IDEES Telle, Olivier; Centre National de la Recherche Scientifique, UMR 8504 Geographie-cités; Centre des Sciences Humaines, UMIFRE 20 CNRS-MAE Daudé, Eric; Centre des Sciences Humaines, UMIFRE 20 CNRS-MAE Vaguet, Alain; Centre National de la Recherche Scientifique, UMR 6266 IDEES Paul, Richard; Institut Pasteur, Genomes and Genetics; Centre National de la Recherche Scientifique, URA 3012
Keywords:	Dengue, Urban Heat Islands, Diurnal Temperature Range, Aedes mosquito

SCHOLARONE™
Manuscripts

Manuscript

Urban climate versus global climate change – what makes the difference for dengue?

R. Misslin^{1*}, O. Telle^{2,3*}, E. Daudé², A. Vaguet¹ and R. E. Paul^{4,5}

¹Centre National de la Recherche Scientifique, UMR 6266 IDEES, 7 rue Thomas Becket, 76821, Rouen, France.

² Centre des Sciences Humaines, UMIFRE 20 CNRS-MAE, 2 APJ Abdul Kalam road, 110011, Delhi, Inde.

³ Centre National de la Recherche Scientifique, UMR 8504 Géographie-cités, Paris, France.

⁴Institut Pasteur, Unité de la Génétique Fonctionnelle des Maladies Infectieuses, 28 Rue du Dr. Roux, 75724 Paris cedex 15, France.

⁵Centre National de la Recherche Scientifique, Unité de Recherche Associée 3012, Paris, France.

* - contributed equally.

Corresponding author :

Richard E. Paul, Functional Genetics of Infectious Diseases Unit, Institut Pasteur, 25 Rue du Dr. Roux, 75724 Paris cedex 15, France. Email : rpaul@pasteur.fr

Short title (50 characters incl. Spaces) Climate, dengue and urban heat islands

Keywords: Dengue; Aedes mosquito; Urban heat islands; Diurnal Temperature Range

Abstract

The expansion of the geographical distribution of vector-borne diseases is a much-emphasized consequence of climate change. As, if not more important for public health, are the consequences of urbanization for diseases that are already endemic. We focus on dengue, the most widespread urban vector-borne disease. Largely urban with a tropical/sub-tropical distribution and vectored by a domesticated mosquito, *Aedes aegypti*, dengue poses a serious public health threat. Temperature plays a determinant role in dengue epidemic potential, affecting crucial parts of the mosquito and viral life-cycles. The urban predilection of the mosquito species will further exacerbate the impact of global temperature change because of the Urban Heat Island effect. Even within a city, temperatures can vary by 10°C according to the urban land-uses, and diurnal temperature range (DTR) can be even greater. DTR has been shown to contribute significantly to dengue epidemic potential. Unravelling the importance of within city temperature is as important for dengue as for the negative health consequences of high temperatures that have hitherto focussed on pollution, heat stroke etc. Urban and landscape planning designed to mitigate the “non-infectious” negative effects of temperature should additionally focus on dengue that is currently spreading worldwide with no signs of respite.

Introduction

Global warming is predicted to generate an increase of 1-4°C in land surface temperature during this century and preliminary analyses suggest that the low income countries will bear the brunt of the predicted health impact.^{1,2} Socially disadvantaged individuals living in urban settings have been highlighted as a major group at risk from the adverse health consequences of climate change, which will exacerbate already existing urban health inequities.^{3,4} In addition to the negative consequences of extreme temperature events for non-infectious diseases that are particularly pertinent to the urban setting and which have received considerable attention,⁵⁻¹¹ infectious diseases in an urban setting are also a cause for concern. Indeed, WHO estimates that one of the main consequences of global warming will be an increased burden of vector-borne diseases. Among these, dengue appears to be particularly problematic, most especially because of the urban and peri-urban habitat of the major mosquito vector of dengue.

Dengue is caused by any of four antigenically distinct dengue viruses, or serotypes, designated DENV-1, DENV-2, DENV-3, and DENV-4, which are transmitted by mosquito spp. of the *Aedes* genus. The most important mosquito vector of DENV is *Aedes aegypti*, which has adapted to a domestic niche and is thus posing a major public health problem because of uncontrolled, unplanned and “unhygienic” urbanization. Although the majority of DENV infections are subclinical, resulting in insufficient discomfort for clinical consultation,¹² any of the 4 serotypes can cause dengue fever (DF), an acute viral infection characterized by fever, rash, headache, muscle and joint pain, and nausea, as well as more severe forms of the disease, dengue hemorrhagic fever (DHF)/dengue shock syndrome (DSS). Over the past decade, the number of dengue outbreaks has escalated and the population at risk is increasing yearly.¹³ More than 3.5 billion people are at risk of DENV infection in over 100 countries and recent estimates suggest that there are 390 million DENV infections every year, of which 100 million cause clinical symptoms.¹⁴ In South East Asia, the disease has been one of the major causes of hospitalisation among children since the 1990s.¹³

In 2012, WHO released their global strategy for dengue prevention and control, stating the objective of reducing dengue attributable mortality and morbidity by 50% and 25% respectively by 2020.¹⁵ This reduction in morbidity is aimed to be achieved, at least in part, by implementing improved outbreak prediction and detection through coordinated epidemiological and entomological surveillance. Implicit in this action plan is an understanding of dengue epidemiology. However, under the rubric of dengue epidemiology,

1
2
3 information has until recently been restricted to reported cases and estimates of the
4 countrywide incidence of disease and case fatality rates. Whilst this information is important,
5 there is no expressed concerted view on how we expect morbidity/mortality rates to change in
6 the face of climate change in the current day context of modern society with its increasing
7 urban population. The prolific increase in the burden of dengue in recent years has been
8 connected to societal changes such as urbanization and increased national and international
9 transport that spread both the virus and the mosquito vector spp..¹⁶⁻¹⁹ In addition, rising
10 temperatures and global climate change may also lead to the expansion of the range of major
11 mosquito vectors into new areas, extension of the transmission season in areas with currently
12 circulating dengue virus and increase in the mosquito spp. vectorial capacity (see below).^{20,21}
13 As pointed out recently, both climate change and urbanization have contributed to the
14 observed increase in dengue,²² but defining their relative contributions is crucial for the
15 development and success of novel control methods. Mitigation of dengue risk factors
16 associated with urbanization may be possible but will they make a difference? In this review,
17 we address this question, propose future necessary avenues of research and underline the need
18 to develop vector control strategies pertinent to modern day society.
19
20
21
22
23
24
25
26
27
28
29

30 ***Influence of temperature and rainfall on Aedes mosquito spp. vectorial capacity***

31
32 Temperature and rainfall are two crucial variables that determine mosquito distribution,
33 abundance and capacity to transmit the virus. Both these variables will be influenced by
34 climate change and urbanization. The capacity to transmit the virus, known as the vectorial
35 capacity, has been formulated into a quantitative framework within which key parameters are
36 defined and from which estimates of the epidemiology of dengue can be made.²³ The formula
37 incorporates the mosquito components of the transmission system from the classical Ross-
38 MacDonald equation of R_0 for malaria, where R_0 , the basic reproductive number, is the total
39 number of secondary infections arising from a single infection in an otherwise susceptible
40 population. The major difference (from the Ross-MacDonald equation) is that the duration of
41 an infection in humans is no longer considered in the vectorial capacity and thus it estimates
42 the daily number of secondary cases arising from a currently infective case in a fully
43 susceptible human population. The vectorial capacity, C , is defined as follows:
44
45
46
47
48
49
50
51

$$52 C = \left(\frac{m.a^2 . e^{-\mu m} . b.c}{\mu} \right)$$

53
54
55
56
57
58
59
60

1
2
3 Where m is the number of mosquitoes per person, a is the mosquito biting rate, μ the daily
4 mosquito mortality rate, n is the Extrinsic Incubation Period (EIP), i.e. the number of days
5 after ingestion within a bloodmeal, the virus needs to replicate and disseminate to the salivary
6 glands, and b and c are respectively the two parameters of successful transmission from an
7 infected mosquito to an uninfected human and from an infected human to a mosquito.
8 Although the formula ignores the fine details, most especially of the variation underlying
9 human-mosquito contact, and is thus clearly unrealistic to strictly describe actual
10 epidemiological dynamics, it does provide a useful heuristic with which to understand the
11 relative importance of the key parameters and the impact of temperature thereon. An on-line
12 calculator provides an educational tool for understanding how small changes in each of the
13 parameters results in changes in vectorial capacity and the subsequent R_0 of dengue
14 (http://idshowcase.lshtm.ac.uk/id503/ID503/M3S1/ID503_M3S1_050_010.html).
15
16

17
18 The impact of temperature on all of these parameters has been studied extensively,
19 particularly for *Ae. aegypti*. Implicit rather than explicit in the equation is the impact of
20 temperature on larval mosquito development rate, which underlies the parameter m , the
21 number of mosquitoes per human. Temperature is a determinant of mosquito population
22 dynamics both directly via effects on insect physiology and behaviour, as well as indirectly
23 through the biotic environment within which the larvae develop. The female mosquito's
24 reproductive cycle is affected by temperature. At $< 20^\circ\text{C}$, fertilization decreases and
25 oviposition behaviour alters, with oviposition site choice influenced by both temperature and
26 sun exposure.²⁴ The preferred breeding sites are small bodies of water that are more
27 susceptible to large temperature fluctuations, especially those due to insolation. The extent to
28 which female mosquitoes can gauge the temperature quality of a breeding site is not clear, but
29 site-specific variation in choice of shaded vs. sun-exposed sites has been observed.^{25,26}
30 Feeding behaviour is also influenced by temperature. Feeding activity is limited or ceases at
31 temperatures $< 15^\circ\text{C}$ and can also be limited at temperatures $> 36^\circ\text{C}$.²⁴ Adult mosquitoes are
32 highly sensitive to desiccation and in addition to behavioural avoidance of direct insolation,
33 frequent feeding on blood seemingly offers an additional response to hydration. Higher
34 temperatures have been associated with higher incidences of multiple blood feedings. Smaller
35 females, which might be expected to be more susceptible to desiccation, also exhibited
36 increased multiplicity of feeding.²⁷ An alternative explanation to the biting rate - temperature
37 relationship is that temperature affects egg developmental rates and thus higher biting rates
38 might be a consequence of the higher rate of egg development and shorter gonotrophic cycle.
39
40
41
42
43
44
45
46
47
48
49
50
51
52
53
54
55
56
57
58
59
60

1
2
3 *Ae. aegypti* larval development rate increases with ambient (water) temperatures up to 34°C
4 and then decreases.²⁸ In the absence of competition, predation and entomopathogenic
5 infection, maximal survival (~90%) occurs at 27°C.^{28,29} Below 13°C, mosquito eggs will
6 usually not hatch and any larva will not complete their development.²⁴
7
8

9
10 Mosquitoes require water for breeding but the association of rainfall with mosquito bionomics
11 is more complex. This is in part because of the adaptation of *Ae. aegypti* to a domesticated
12 niche, where the mosquitoes use man-made breeding sites such as flower pots or Air
13 Conditioning condensation, which confounds any increased availability of natural breeding
14 sites created by rain.^{27,30} Therefore, the rainfall association is very dependent on the local
15 extent of man-made breeding sites. More general non-linear effects of rainfall on mosquito
16 density will also apply, such as larval wash-out and increased adult mortality following heavy
17 rain and rainfall will have an indirect impact via its cooling effect on ambient temperature.
18 *Aedes* spp. that are not so domesticated, and even *Ae. aegypti* in some areas (e.g. Caribbean³¹)
19 that use natural habitats, will be much more susceptible to the vagaries of large scale climate
20 effects and local weather. Thus, the impact of rainfall will be likely very place dependent and
21 in highly urban settings, it may have a more significant effect on mosquito vectorial capacity
22 through its impact upon relative humidity and adult mosquito survival.
23
24

25
26 Temperature effects on biting rate are not only important for population dynamics, but, as can
27 be seen in the Vectorial capacity formula (see C), impact directly dengue epidemiology. The
28 squared power function associated with feeding rate “a” is because the female must bite twice
29 (to be infected and then to pass the virus on) and makes any changes in feeding rate all the
30 more influential on the number of secondary infections. The association between biting rate
31 (*a*) and temperature (*T*) has been quantitatively estimated and the best fit found to be linear
32 within a specified temperature range (21°C ≤ *T* ≤ 32°C).³²
33
34

$$35 \quad a(T) = 0.0043T + 0.0943 \text{ (per day)}$$

36
37 Adult (female) survival rate is one of the most crucial factors determining vector-borne
38 disease epidemiology in a specified setting and one which is particularly pertinent to dengue.
39 The adult mosquito must live sufficiently long for the virus to be able to develop through its
40 EIP and to be able to spread the virus through blood meals. Temperature has a highly
41 significant impact both on mosquito survival *per se* and on the duration of the EIP. Adult
42 mosquito survival is important because only mosquitoes that live beyond the EIP can act as
43 potential vectors. The first blood meal is generally taken 3 days after emerging as an adult;
44 therefore, assuming an EIP of 7–12 days,³³ a minimum of 10–15 days is required for a newly
45
46
47
48
49
50
51
52
53
54
55
56
57
58
59
60

emerged mosquito to become infectious if its first blood meal was on an infected person. Mark–release–recapture studies have estimated that adult female daily survival rates are between 86% and 91%.³⁴ Although these studies did not examine climatic influences on survivability, Christophers (1960)²⁴ has provided evidence of increased mortality with exposure to prolonged extreme heat ($> 40^{\circ}\text{C}$) and cold ($< 0^{\circ}\text{C}$) in a laboratory setting.

Recently, Lambrechts *et al.*³⁵ and Liu-Helmersson *et al.*³² have estimated the quantitative relationship between the parameters in the vectorial capacity formula and temperature using the wealth of published laboratory and field studies with the aim of addressing the recognized variation in temperature that mosquitoes encounter spatially and temporally.

An adequate quantitative relationship between temperature and EIP (here denoted n) was found to follow an exponential function between the temperature limits of 12°C and 36°C :

$$n(T) = 4 + e^{5.15 - 0.123T}$$

The association between mortality rate (μ) and temperature (T) from experimental studies within a specified temperature range ($10.5^{\circ}\text{C} \leq T \leq 33.4^{\circ}\text{C}$) found that mortality rate ranged from 0.27% to 0.92% per day,³⁶ with a maximum at temperatures $< 14^{\circ}\text{C}$ and $> 32^{\circ}\text{C}$, and a minimum mortality rate at 27.6°C . The best fit equation was the following:

$$\mu(T) = 0.8962 - 0.159T + 0.01116T^2 - 3.408 \times 10^{-4} T^3 + 3.809 \times 10^{-6} T^4$$

This relationship may be further complicated by an apparent non-linear relationship between mortality rate and mosquito age: older females have lower rates than younger mosquitoes.³⁷ In addition, species specific differences are thought to occur, with, for example, *Ae. albopictus* having generally higher survival but *Ae. aegypti* better tolerating a wider range of temperatures.³⁸

Successful transmission rates from infected man to mosquito and *vice versa* are often considered as perfect, more for the sake of simplicity than based on experimental evidence. Whilst the biological basis underlying any effect of temperature on the transmission parameters is unclear, there does seem to be an effect of temperature on both parameters.

From human to mosquito (b_m is equivalent to parameter c in the VC equation):

$$b_m(T) = \begin{cases} 0.0729T - 0.9037 & \text{for } 12.4^{\circ}\text{C} \leq T \leq 26.1^{\circ}\text{C} \\ 1 & \text{for } 26.1^{\circ}\text{C} < T \leq 32.5^{\circ}\text{C} \end{cases}$$

1
2
3 From mosquito to human (for $12.9^{\circ}\text{C} \leq T \leq 32.46^{\circ}\text{C}$):
4

$$5 \quad b_h(T) = 0.001044T \times (T - 12.286) \times \sqrt{32.461}$$

6
7

8 The combined effects of temperature on the mosquito parameters and the subsequent vectorial
9 capacity can be seen in Figure 1. Having detailed the mechanistic impact of temperature and
10 rainfall on dengue epidemiology via a quantitative framework, we now put this into the
11 context of climate and urbanization.
12
13

14 *Impact of climate on dengue*

15
16 Climate variability is an important determinant of the incidence of a number of significant
17 human and animal diseases with associated socio-economic impacts. This is particularly
18 important for low-income countries, where the influence of climate variability on health is
19 widely recognized;³⁹⁻⁴¹ Africa and Asia bear the largest economic burden of disease in
20 humans.⁴² Many diseases have climatic niches and their emergent and epidemic dynamics are
21 influenced by variability in the climate.^{43,44} Many of the most important diseases affecting
22 health are mosquito-borne, including notably malaria and dengue. Climate has a potentially
23 large impact on the incidence of mosquito-borne diseases, directly via the developmental rates
24 of both the mosquito and pathogen and mosquito survival and indirectly through changes in
25 vegetation and land-surface characteristics, such as the availability of mosquito oviposition
26 sites.
27
28

29
30 Many studies have found associations between climatic factors and dengue transmission.⁴⁵⁻⁴⁷
31 The importance of incriminating large scale climate variables is that it potentially provides an
32 accessible early warning system. Several studies have addressed the lag time associations of
33 temperature and precipitation with dengue incidence with highly variable results; it seems that
34 there are different lag times depending also on the latitudinal position of the country.⁴⁸
35 Dengue incidence characteristically follows seasonal patterns on an annual time-scale, but
36 increases in intensity on a multi-annual scale. The underlying causes of these periodic
37 epidemics are not understood, but are thought to arise through a combination of intrinsic and
38 extrinsic drivers. The intrinsic factors include the host-virus interactions with disease being
39 mediated through serotype-specific immunity. The extrinsic drivers include the large scale
40 climate oscillations, notably El Niño, and local weather conditions.
41
42

43
44 El Niño has been found to be associated with an increase in annual numbers of dengue cases
45 in the Pacific Islands, French Guiana, and Indonesia and monthly dengue hemorrhagic fever
46 incidence in Bangkok but only from 1986 to 1992;⁴⁹⁻⁵² in the latter study, in the absence of
47
48
49
50
51
52
53
54
55
56
57
58
59
60

1
2
3 the multi-annual effect of El Niño-Southern Oscillation (ENSO), the seasonality of dengue
4 dynamics predominated.⁵² The precise mechanism by which El Niño can impact upon dengue
5 dynamics is unknown, but is likely through its effect on local climate variables that influence
6 the mosquito-human interaction; El Niño causes warming of surface temperatures. The fact
7 that large-scale climate indices seem to better explain variation in large-scale (typically
8 country-wide) dengue incidence is puzzling but has been noted before as a general ecological
9 phenomenon; measures of local climate appear to fail to capture the complex associations
10 between weather and ecological processes.⁵³ Extension of large-scale regional climatic
11 patterns to the urban micro-climate is vital, as it is at this scale that the mosquitoes and
12 humans interact. Recent studies have clearly demonstrated the highly localised nature of
13 dengue transmission.⁵⁴⁻⁵⁶ Micro-climatic conditions will impact upon mosquito bionomics and
14 potentially have considerable consequences on mosquito vectorial capacity. In addition,
15 observed complex environmental associations with dengue incidence may emerge from
16 changes in human behaviour rather than mosquito biology. In Puerto Rico, ENSO was
17 associated with temperature and not precipitation, whereas precipitation was associated with
18 dengue incidence, albeit with a 7 months time lag.⁵⁷ It has been suggested that alterations in
19 precipitation alter water storage behaviour, which thus impact upon mosquito dynamics and
20 human contact at a very local scale, uncouple mosquito bionomics from larval habitat
21 dependence on rainfall.^{57,58} Such complex environmental associations underline how little we
22 really understand their influence on the vectorial capacity of mosquitoes.

23 *Urbanization and expansion of dengue*

24
25 Urban human population sizes in tropical and sub-tropical countries have now reached
26 unprecedented levels and much of this growth has occurred and is still in rapid progress in
27 developing nations such as India.⁵⁹ For example, urban densities are 30 000 inhabitants / km²
28 in Mumbai (India), 24 000 in Kolkata (India), 20 000 in Lahore (Pakistan). The rapidity with
29 which such urbanization and population growth has occurred is not without consequences;
30 most particularly there is an amplifying infrastructure crisis with ever-increasing problems of
31 environmental conditions. The health sector, the supply of running water, electricity and the
32 availability of housing are all generally inadequate. Thirty-one % of the world's urban
33 population live in slums, with figures reaching 70% in sub-Saharan Africa and 40% in Asia.⁶⁰
34 The process of urbanization will increase further and the World Urbanization Prospects
35 considers that by 2030 all population growth will be concentrated in urban areas, mostly in
36
37
38
39
40
41
42
43
44
45
46
47
48
49
50
51
52
53
54
55
56
57
58
59
60

1
2
3 the South.⁶¹ This population will be largely absorbed by the cities in the South generating
4 particularly rapid population growth.
5

6
7 Urbanization results in significant modifications to the land surface structure, predominantly
8 the replacement of natural vegetation by man-made surfaces.⁶² The consequence of this is to
9 alter the urban climate and the most well-documented example of this is the creation of the
10 urban heat island.⁶³ Urban heat islands (UHIs) are metropolitan areas that are significantly
11 warmer than their surrounding rural areas, because of human activities.⁶⁴ Urban climate is
12 influenced by many factors related to the intrinsic nature of a city. The composition and
13 arrangement of natural and man-made surfaces, including impervious surfaces, vegetation
14 areas and water bodies, as well as the local weather conditions influence near surface energy
15 flux partitioning, resulting in variable local climates.⁶⁵ Vegetation cover and composition, for
16 example, have been shown to be important for explaining spatial differences in urban and
17 suburban air temperatures.⁶⁶ Land cover characteristics, such as vegetation indices measured
18 by NDVI (normalized difference vegetation index), and the relative amounts of other land
19 cover types (building area, impervious surface, water body, green spaces) significantly affect
20 the urban temperature distribution patterns and UHI intensity.⁶⁷ Many studies (reviewed in
21 Arnfield)⁶⁸ have confirmed predictions of Oke 1982⁶⁵ on the evolution of UHIs and especially
22 in the context of local and larger scale climate events. Notably, UHI intensity decreases with
23 increasing cloud cover, is greatest during anti-cyclonic conditions and in the summer or warm
24 half of the year, increases with increasing city size and/or population and is greatest at night.
25 Whilst generally considered at the city vs. neighbouring rural environment scale, even at small
26 intra-urban scales, the effects of urban geometry, both with the shading effect in daytime and
27 with the reducing radiation cooling and increasing thermal storage effect at night, can
28 generate local scale differences in UHI intensity.⁶⁹ Although UHI research has tended to focus
29 on highly densely populated urbanizations, a 27 year study in Tokyo revealed that whilst there
30 was a background warming trend reflecting global warming in low populated areas (<100
31 people per square kilometre), there was anomalous warming reflecting UHI even in weakly
32 populated sites (100-300 / km²).^{70,71} UHI effects can thus occur even in low density
33 urbanizations.
34
35
36
37
38
39
40
41
42
43
44
45
46
47
48
49
50
51

52 The public health impact of UHIs has been directly implicated in exacerbating the negative
53 effects of extreme temperature conditions and in the context of air pollution,^{72,73} but neglected
54 in the context of infectious diseases. Clearly for dengue, significant temperature modification
55 can have a large impact on epidemic potential. Indeed, Araujo *et al.*⁷⁴ have carried out one of
56
57
58
59
60

1
2
3 the few studies directly assessing the association between UHIs and dengue incidence. In Sao
4 Paolo they observed that dengue incidence was high in low vegetation cover areas where the
5 land surface temperature (LST) was around 29°C. Furthermore, more dengue cases clustered
6 in areas of LST >32°C, than in areas characterized as low socioeconomic zones, high
7 population density areas, or slum-like areas.⁷⁴ Thus, temperature is seemingly the major risk
8 factor in this study site, but may not necessarily be generally the case in other settings. In
9 general, urbanization will be associated with increased local temperatures compared to
10 neighbouring rural areas, with resulting impact on vectorial capacity and dengue
11 epidemiology. However, crucially, the complexity of urban geometry will generate a mosaic
12 of temperatures at very small scales with potential significance for dengue epidemiology as
13 will be discussed next.

21 *Intra-urban variation and the diurnal temperature range*

22
23 Although urban areas are generally warmer than the surrounding suburban and rural areas, the
24 temperature distribution is not a simple urban-rural gradient and at an intra-urban scale, there
25 are large temperature differences.^{66,67} Scales of reference for urban geography can be defined
26 as follows:⁷⁵ the microscale, which is set by the dimensions of individual elements (e.g.
27 buildings, trees, roads, streets, courtyards, gardens, etc., extending less than a hundred
28 meters); the local scale, which includes climatic effects of landscape features, such
29 as topography; the mesoscale, where the city itself influences the weather and climate at the
30 scale of the whole city, typically tens of kilometres in extent. Urban areas with varied land
31 cover often comprise a mosaic of warm and cold areas that vary significantly at the micro
32 scale.⁷⁶ Air temperatures at different points within the same urban area may differ
33 significantly even in the same overall climatic context, and they can be affected by the
34 thermal state of the adjacent surface cover, and by dispersion through turbulence and
35 advection from the surroundings. A clear example of this occurs in the vicinity of urban green
36 areas such as parks. These are generally cooler than their surrounding built-up areas, and can
37 produce air temperature differences up to 7°C and the cooling effect of vegetation can extend
38 into immediate local scale surrounding areas.^{77,78}

39
40 In contrast to the global trend of increased mean temperatures brought about by urbanization,
41 the diurnal temperature range (DTR) in cities has decreased (e.g. Delhi).⁷⁹ Indeed, DTR is
42 greater in the countryside than the city.⁶⁸ This is because there have been asymmetric changes
43 in the monthly mean minimum and maximum temperatures; minimum temperatures have
44 risen at three times the rate of the increase in maximum temperature.⁸⁰ One of the reasons for
45
46
47
48
49
50
51
52
53
54
55
56
57
58
59
60

1
2
3 this is the UHI effect. This also takes place from the release of human energy production,
4 such as from vehicles and powering appliances (AC during summer, heaters during winter),
5 into the environment. An increasing number of studies have shown this downward trend of
6 the global and local DTR.^{63,79} Moreover, there is seasonality in increasing and decreasing
7 temperature that is related both to urbanization and the seasonally predictable climatic factors.
8 This has the end effect of introducing significant spatio-temporal heterogeneity in DTR within
9 the same microscale area.⁸¹

10
11 Despite the fact that many studies focusing on the spatiotemporal distribution of dengue
12 and/or its main vectors at the intra-urban scale have addressed the temporal impact of
13 meteorological variables, only a few have taken into account the spatial heterogeneity of these
14 variables. There are few studies (such as Araujo *et al.* 2015⁷⁴ for dengue or Hayden *et al.*
15 2010⁸² and Reiskind *et al.* 2013⁸³ for *Aedes* spp.) that have highlighted the significant role of
16 temperature variability. To our knowledge, no study has addressed the role of DTR on
17 mosquito-virus interactions at the city scale. As this scale is the one at which transmission
18 occurs and anti-vectorial interventions are implemented, intra-urban measurements of the
19 relationships between dengue transmission and mosquito bionomics and fine-scale DTR may
20 aid in guiding public health strategies.

21 22 ***Diurnal temperature range and vectorial capacity***

23
24 Diurnal temperature range (DTR) has been shown to have significant effects on biology of
25 both the mosquito and the virus and their interaction.³⁵ DTR affects two important parameters
26 underlying dengue virus transmission by *Ae. aegypti*. Mosquitoes are less susceptible to virus
27 infection and die faster under larger DTR around the same mean temperature. Large DTR
28 (20°C) decreases the probability of midgut infection, but not duration of the EIP, compared
29 with moderate DTR (10°C) or constant temperature. A thermodynamic model predicted that
30 at mean temperatures <18°C,⁸⁴ DENV transmission increases as DTR increases, whereas at
31 mean temperatures >18°C, larger DTR reduces DENV transmission. The negative impact of
32 DTR on *Ae. aegypti* survival indicates that large temperature fluctuations will reduce the
33 probability of vector survival through the EIP and the duration of its infectious life. Seasonal
34 variation in the amplitude of daily temperature fluctuations helps to explain seasonal forcing
35 of DENV transmission at locations where average temperature does not vary seasonally and
36 mosquito abundance is not associated with dengue incidence.³⁵ Mosquitoes live longer and
37 are more likely to become infected under moderate temperature fluctuations, which are typical
38 of the high DENV transmission season, than under large temperature fluctuations, which are
39
40
41
42
43
44
45
46
47
48
49
50
51
52
53
54
55
56
57
58
59
60

1
2
3 characteristic of the low DENV transmission season. From that perspective, the influence of
4 DTR could be decisive during the cold season, when mosquitoes would normally be unable to
5 breed and sustain large populations. A particularly small DTR in this season might lead to
6 larger mosquito populations than usual, potentially maintaining virus transmission at a higher
7 rate than typically observed.
8
9

10
11 Liu-Helmersson *et al.*³² extended this work by considering the impact of DTR on the Dengue
12 Epidemic Potential (DEP) as calculated through the relative Vectorial Capacity (that is the
13 vectorial capacity relative to the vector-to-human population ratio). Using the relationships
14 between temperature and the C formula equation as described, there was a strong temperature
15 dependence of DEP, peaking at a mean temperature of 29.3°C when DTR was 0°C and at
16 20°C when DTR was 20°C. Increasing average temperatures up to 29°C led to an increased
17 DEP, but temperatures above 29°C reduced DEP. In tropical areas, where the mean
18 temperatures are close to 29°C, the impact of DTR was far less, but small DTR increased
19 DEP while large DTR reduced it (Figure 2). DTR is clearly potentially significant for dengue
20 epidemiology, but its estimated impact will vary according to the mean ambient temperature.
21 Importantly, cooler sub-tropical and temperate regions will be predicted to be most affected
22 by the epidemiological impact of DTR. However, given the strong association of the major
23 mosquito vector with urbanization, any modulatory role of DTR under climate change needs
24 to be considered within an urban context and specifically the microclimate generated by
25 urbanization.
26
27

28 ***The environment and mosquito spp. community – an evolving dynamic***

29
30 Numerous studies have addressed the effect of urbanization on mosquito population dynamics
31 beyond the complex effects of temperature outlined above and have been dealt in detail by
32 LaDeau *et al.* 2015.⁸⁵ Briefly, as discussed in the context of vectorial capacity, many facets of
33 the mosquito lifecycle (breeding, biting rate, survival...) can be influenced by the urban
34 environment both directly (through micro and local scale topography and infra-structure
35 impacting breeding sites, human-mosquito contact etc) and indirectly (through the thermal
36 effects of UHIs).⁸⁶ However, a major take-home message is that there can be considerable
37 very local scale heterogeneity in the urban environment and one that can change at rapid
38 temporal scales (e.g. seasonally). For example, larval habitat availability can be influenced by
39 the local socio-economic status, where lack of a piped water network leads to water storage
40 that contributes to the mosquito density and increasingly so during the dry season.⁸⁷ However,
41 because neighborhoods of widely differing socio-economic status can be closely located,
42
43
44
45
46
47
48
49
50
51
52
53
54
55
56
57
58
59
60

1
2
3 there can be spill-over consequences for dengue epidemic potential. A major lacuna is our
4 understanding of the scale, which is pertinent to dengue epidemiology, at which we need to
5 measure the influence of the abiotic environment on mosquito population dynamics. To make
6 matters even more complex, urban environments evolve and mosquito spp. communities
7 change over time. In particular and in light of the current global spread of *Aedes albopictus*,
8 novel invading species will take time to establish themselves and thus likely display a very
9 different relationship to their environment than stable, established populations.⁸⁸

10
11 The focus of the majority of studies on dengue mosquito vectors has been placed on *Ae.*
12 *aegypti*. However, in addition to *Ae. aegypti*, there are many other *Aedes* species that are
13 locally and increasingly globally important beyond the tropical and sub-tropical distribution
14 of *Ae. aegypti* (approx. 35°N to 35°S).⁸⁹ Indeed, more locally distributed *Aedes* spp., such as
15 *Aedes polynesiensis*, *Aedes scutellaris* and *Aedes niveus*, are responsible for dengue
16 transmission in tropical regions where *Ae. aegypti* is absent.⁹⁰ Moreover, over the last few
17 decades, a number of *Aedes* spp. have spread worldwide, generating potential transmission of
18 DENV beyond the geographically and latitudinally restricted distribution of the above
19 mentioned *Aedes* spp.⁹¹ These invasive species, notably *Aedes albopictus* and *Aedes japonicus*,
20 are potential epidemiological threats beyond the sub-tropics, being competent for dengue
21 transmission and able to persist in more temperate climates. The particularity of these two
22 invasive species is the capacity to over-winter through the production of cold-resistant eggs.
23 This has enabled *Ae. albopictus* to spread out from its East Asian habitat to invade the US and
24 Europe and *Ae. japonicus* to spread out of its home range in Japan, Korea and SE China,
25 invading the US in the 1990s and Europe in 2000s.⁹²⁻⁹⁴ In addition, these species are not as
26 domesticated as *Ae. aegypti* and thus represent a serious threat beyond the urban setting.
27 Hence, uncontrolled, unplanned and “unhygienic” urbanization is not the only threat for the
28 spread of dengue.

29
30 One notable feature of all these dengue mosquito vectors is their adaptive capacity to exploit
31 artificial containers for breeding, thereby increasing mosquito densities in close proximity to
32 man. This is particularly important for several species, such as *Ae. polynesiensis*, whose flight
33 range (away from oviposition sites) is limited 100-200m.⁹⁵ Whilst other species, such as *Ae.*
34 *aegypti* and *Ae. japonicus*, can fly further (800m), the relevance of this innate trait needs to be
35 put into context when considering an urban setting. Mosquitoes will potentially fly as far as
36 necessary to oviposit and blood feed and their dispersal can be constrained by the urban
37 landscape; this distance may be very short in urban settings, as they can find all their needs at
38
39
40
41
42
43
44
45
46
47
48
49
50
51
52
53
54
55
56
57
58
59
60

1
2
3 the same place (blood, breeding site and shade to rest).⁹⁶ In conclusion, whilst the complexity
4 of system seems overwhelming, there is need for an increased research focus on the extent to
5 which such detail on the mosquito-urban relationship is required for an effective intervention.
6
7

8 *The case of Delhi, India*

9
10 Delhi is situated in the subtropics (28° 36' 36" N; 77° 13' 48" E) and has a population of
11 about 16 million. It has a monsoon-influenced subtropical climate with a cool winter (average
12 temperatures 12° C, range 7-21° C) from November to January, a warm summer (average
13 temperatures 32°C, range 28-41°C) from April to June and a monsoon season from July-
14 September. The population of Delhi as a whole grew by 46.3% from 1991 to 2001 and
15 20.96% during 2001-2011 to establish at more than 16 million in the metropolitan area in
16 2011.^{79,97,98} Sprawling urban expansion in Delhi has led to extension beyond the National
17 Capital Territory of Delhi to incorporate towns in neighbouring states. This area covers 2000
18 km² and a population of 25 million, making it the 3rd-largest urban area in the world.⁹⁹ As
19 well as such rapid population growth, mostly because of migration, there has also been an
20 increase in environmental diversity in the Indian capital. Major transformations in the LUC
21 (built-up area surpassed more than 53% of the total surface area) are radically altering the
22 microclimate. Human population densities are also highly heterogeneous: in South Delhi (a
23 mostly high-income area) densities are around 2,000 inhabitants/km², while densities in Old
24 Delhi (mainly low income areas, heart of the city) are reaching 38,000 inhabitants/km². This
25 heterogeneity is also represented in water access; in the face of intermittent and unpredictable
26 water availability, households from different socio-economic levels implement different
27 strategies. High incomes households use strategies that represent a lower level of risk
28 regarding vectors (pumping underground water for example), while low income household
29 with no access to water networks have to stock water in house,¹⁰⁰ a strategy which constitutes
30 an opportunity for the mosquito vector of DENV to reproduce.
31
32
33
34
35
36
37
38
39
40
41
42
43
44
45

46 Dengue is strongly seasonal in Delhi and clearly associated with the increased temperatures
47 and rainfall in monsoon season. Delhi has recorded dengue cases every year since 1996. Prior
48 to that, cases of dengue were recorded but did not reach epidemic proportions,¹⁰¹⁻¹⁰³ although
49 diagnostic methods were only based on clinical diagnosis. In 1996, there was an epidemic of
50 unprecedented proportions with over 10,000 cases and a 4.1% mortality rate.¹⁰⁴ Since 2003,
51 all four viral serotypes have been periodically co-circulating.^{105,106} Thus the epidemiology of
52 dengue has evolved from epidemic to endemic and exemplifies the growing threat that dengue
53 poses for an increasingly large number of people worldwide living in conditions suitable for
54
55
56
57
58
59
60

1
2
3 dengue transmission. In the decade between 2001 and 2015, four dengue epidemics (>2000
4 registered cases in the surveillance system) were reported (2003, 2006, 2010, 2013 and 2015).
5 The number of cases ranged from 2,800 in 2003 to over 15,867 (and counting) in 2015, as
6 reported by the surveillance system (<http://nvbdcp.gov.in/den-cd.html>), which likely
7 underestimates the amplitude of the dengue burden.¹⁰⁷
8
9

10
11 We previously developed a Geographical Information System for Delhi, enabling land-use
12 and socio-economic characterization of the urban environment. Dengue cases identified in the
13 Delhi surveillance system from 2008 to 2010 were collated, geolocalised and embedded as
14 layers to be analyzed via geostatistic tools.⁵⁶ Overall, there was high heterogeneity in
15 incidence rates across areas with the same socio-economical profiles and substantial inter-
16 annual variability. However, in the sub-epidemic years (1000-2000 cases reported), 2008 and
17 2009, dengue incidence was clustered in East and Central Delhi (Figure 3A). 2010 witnessed
18 a large epidemic that covered the city with little clear demarcation of high incidence sites.⁵⁶
19
20

21
22 Over the decade from 2001-2011, night time temperatures have generally increased, but
23 notably, as seen generally,⁸⁰ there is an asymmetric increase leading to large increases in the
24 minimum intra-urban temperatures and relatively small increases in maximum temperatures.
25 Simultaneous intra-urban temperatures varied by as much as 17°C in 2001 and 13°C in 2011
26 (Figure 3B). Thus, intensive urbanization has led to a slow trend towards homogenization of
27 mean temperatures. There has been a decreasing trend in winter DTR across the urban part of
28 Delhi from an average of 11.83°C in 2001 to 8.58°C in the year 2015 (Figure 3C). The
29 increased level of urbanization in this decade resulted in a net increase in the surface area with
30 winter DTR < 11°C from 32.5% of total area in 2001 to 87.8% in 2015. Mean temperatures
31 are largely inverse to the DTR, with smallest DTR in the Eastern and Central areas; these
32 areas are notably those with the highest night time temperatures (Figure 3B). Furthermore,
33 these areas match the impoverished areas of Delhi. The Southern area, which is the richest
34 part of the city, seems to be an exception with medium night time temperatures and
35 intermediate DTR. Comparing the dengue case distribution with the temperature maps does
36 suggest some overlap, at least for the sub-epidemic years of 2008 and 2009. Indeed, the
37 repetitive pattern in 2008 and 2009, when the extent of the dengue epidemic was relatively
38 confined, might suggest that local temperature and DTR, which was particularly high in the
39 winter of 2008, may be important when conditions are less than optimal for dengue
40 transmission across all Delhi. Then during the large epidemic of 2010, when cases were
41 spread more homogeneously across Delhi, as has been observed in other megapolises such as
42
43
44
45
46
47
48
49
50
51
52
53
54
55
56
57
58
59
60

1
2
3 Sao Paolo, the epidemic, once underway, was impossible to contain.¹⁰⁸ Whilst such broad
4 level correlations of temperature, DTR and dengue case incidence can not provide conclusive
5 evidence of causation, the figures nevertheless show the significant extent to which there are
6 fine spatial scale heterogeneities in climatic parameters that can impact upon dengue epidemic
7 potential (Figures 3A-C).
8
9

10
11 As discussed above, one critical feature affecting fine-scale thermal dynamics are green areas.
12 Whilst hitherto considered to bring thermal relief,⁷⁸ they can also provide a refuge for
13 mosquitoes.⁸² The dengue outbreak in Tokyo in 2014 was attributable to local transmission by
14 *Ae. albopictus* in several parks in Tokyo, likely following introduction from outside of
15 Japan.¹⁰⁹ *Ae. albopictus* proliferates in forested areas and is less domesticated than *Ae.*
16 *aegypti*. Within Delhi there was also a significant increased risk of dengue with proximity to
17 the forested area that transects central Delhi.⁵⁶ It is thus likely that green areas provide
18 thermal relief to mosquitoes, buffering extreme day time temperatures that would decrease
19 mosquito survival. Such green areas are largely associated with areas of higher socio-
20 economic status. Thus, green areas might increase mosquito survival and hence impact upon
21 the vectorial capacity despite the reduction in mosquito density because of superior
22 environmental hygiene in areas of higher socio-economic status.
23
24
25
26
27
28
29
30
31

32 Solid waste (e.g. Wash basins, tires, cement pots, plastics etc) is a recognised preferred
33 breeding site for *Ae. aegypti* and environmental hygiene has long been promoted to reduce
34 mosquito densities. In Delhi, we found that during the transmission season, solid waste was
35 indeed the preferred mosquito breeding site and was most prevalent in low income areas.¹¹⁰
36 However, mosquitoes also breed in overhead tanks (OHTs) and other permanent water storage
37 structures. OHTs were most prevalent in high income areas and thus significant mosquito
38 populations can be maintained despite good environmental hygiene. This is to some extent
39 reflected in mosquito larvae occurrence in houses (presence/absence – the House Index). We
40 sampled 18 colonies (Delhi administrative units of area) of differing socio-economic status,
41 from impoverished areas to high income ones. We sampled these colonies once a month
42 during a year (June 2013-May 2014), covering a total of 14,681 houses and 25,643 potential
43 breeding containers, including plastics containers of all sizes to OHTs, as mentioned above.
44 Houses of high income colonies had significantly lower odds of occurrence of larvae than
45 houses in areas of densely populated low socio-economic status (Table 1). However, the
46 difference was small and was only marked between these two socio-economic extremes.
47 Plastics (drums, tubs etc) are the dominant mosquito breeding site in low socio-economic sites
48
49
50
51
52
53
54
55
56
57
58
59
60

1
2
3 whereas OHTs are so in high income sites.¹¹⁰ Increased water storage coupled poorer
4 environmental hygiene may thus contribute to this difference between sites, but the difference
5 was only small. Interestingly, however, during the winter, a time when normally temperatures
6 are too low to sustain adult mosquito activity, the probability of observing mosquito larvae in
7 houses of lower socio-economic status was much higher than for others categories. The
8 significantly higher temperatures in these densely populated areas may therefore become
9 increasingly important during the cold periods for maintaining mosquito populations and
10 potentially even dengue transmission. This does suggest that there is a significant impact of
11 intra-urban temperature differences, but that the effects for the mosquito population and
12 dengue may only be significant when global temperatures are no longer sufficient (i.e. when
13 climate temperatures are too cold during winter). Highly populated areas, such as slums, with
14 small homes and consumption of bio-energy (such as wood) for cooking or heating can
15 explain these higher temperatures. Source reduction (larval removal) operated in these literal
16 hotspots during winter could enable reduction of the diffusion of dengue virus at city scale
17 when meteorological conditions subsequently become favorable. In Brazil, Mondini *et al.*¹⁰⁸
18 demonstrated the re-introduction of dengue virus at the beginning of epidemics from
19 impoverished spaces of Rio, suggesting that the virus is maintained in these areas that offer
20 environmental conditions permitting its survival. By contrast, mosquito vectorial capacity,
21 during the warm season, may be affected more by maximum temperatures rather than
22 temperature differences and green areas may afford thermal respite. Seasonal differences in
23 the impact of green areas on dengue have been previously noted; there was a negative
24 correlation between NDVI and dengue incidence but only in the dry season.¹¹¹

25
26
27
28
29
30
31
32
33
34
35
36
37
38
39
40 In summary, Delhi urban areas, with their differentiated UHI and DTR, represent a very good
41 example of the complexity of dengue epidemiology in modern society. The spread of dengue
42 is the result of a complex process, however, and whilst DTR and UHI could help understand
43 the distribution of dengue cases, they cannot be considered as unique factors. The mosaic of
44 fine-scale urban geometry will impact upon key parameters underlying the vectorial capacity
45 of *Ae. aegypti* and dengue epidemic potential, potentially resulting in very heterogeneous
46 dengue epidemiology.

51 **Concluding remarks**

52
53
54 Geographic expansion of epidemic dengue from South East Asia in the late 20th century saw
55 regions in the Pacific and Americas escalate from being non-endemic with no dengue
56 serotypes circulating, to having episodic epidemics to becoming endemic for dengue.^{112,113}

1
2
3 Very recently, the importation of virus into hitherto dengue-free areas and subsequent
4 autochthonous (local man-mosquito-man) transmission, likely through sub-clinically infected
5 individuals, is becoming increasingly frequent. Autochthonous dengue transmission has
6 occurred twice in France in the last 5 years,^{114,115} a major epidemic occurred in Madeira in
7 2012¹¹⁶ and has also been reported intermittently over the past decade in Texas, Hawaii, and
8 Florida.^{117,118} The increasing biomass of virus globally is thus generating an endless reservoir
9 enabling repeated incursion of virus into naïve areas and thwarting the implantation of DENV
10 will become increasingly difficult. This is likely to be exacerbated by climate warming and
11 increased urbanization that in addition to the discussed effects on dengue epidemiology is also
12 characterized by a larger and denser human population at risk of exposure.

13
14 In light of the clear, recognised significance of climate, and most especially temperature, on
15 dengue, increased effort needs to be focussed on how to mitigate against explosive dengue
16 epidemics. This should be achieved through improved urban management beyond the current
17 procedure of (mosquito larvae) source reduction and removal of potential mosquito breeding
18 sites. Although effective decades ago, this procedure is no longer workable today, following
19 the massive urban growth that has changed the nature of cities and which would require an
20 excessive work force that is no longer economically sustainable in most settings. Complex
21 urban thermal dynamics contribute to dengue epidemiology, but which will vary from place to
22 place and thus require careful site-specific characterization. More research is needed at
23 different scales to generate a better understanding of the actual thermal impact on mosquito
24 dynamics and dengue epidemiology. In this way it may be possible to improve our approach
25 to monitoring of and intervention against dengue epidemics in the world today. Thus, despite
26 recognition of the impact of global climate change on vector-borne diseases, the urban setting
27 generates its own micro-climate. Urban vector-borne diseases should therefore be considered
28 as special cases and receive appropriate attention.

29 30 **Acknowledgements**

31 We thank Dr. Nagpal of the National Institute of Malaria Research and Dr. Yadav of the
32 Municipal Corporation of Delhi, Delhi, India for their collaborative support. Funding: Agence
33 Nationale de la Recherche, France (ANR 10- CEPL-004- AEDESS) and the research leading
34 to these results has received funding from the European Commission Seventh Framework
35 Programme [FP7/2007-2013] for the DENFREE project under Grant Agreement n°282 378.
36 The funding source had no role in study design, data collection, data analysis, data
37 interpretation, or writing of the manuscript. The corresponding authors had full access to all
38 the data in the study and had final responsibility for the decision to submit for publication.

References

1. Parry, M., N. Arnell, P. Berry, *et al.* 2009. Assessing the Costs of Adaptation to Climate Change: a Review of the UNFCCC and Other Recent Estimates. London, UK: International Institute for Environment and Development and Grantham Institute for Climate Change.
2. Friel, S., M. Marmot, A. McMichael, *et al.* 2008. Global health equity and climate stabilisation - need for a common agenda. *Lancet* **372**: 1677–1683.
3. Global Research Network on Urban Health Equity (GRNUHE). 2010. Improving urban health equity through action on the social and environmental determinants of health: final report of The Rockefeller Foundation Global Research Network on Urban Health Equity. London, UK: University College London and the Rockefeller Foundation.
4. Friel, S., T. Hancock, T. Kjellstrom, *et al.* 2011. Urban Health Inequities and the Added Pressure of Climate Change: An Action-Oriented Research Agenda. *Journal of Urban Health: Bulletin of the New York Academy of Medicine* **88**: 886-895.
5. Luterbacher, J., D. Dietrich, E. Xoplaki, *et al.* 2004. European seasonal and annual temperature variability, trends, and extremes since 1500. *Science* **303**: 1499–1503.
6. Barriopedro, D., E.M. Fischer, J. Luterbacher, *et al.* 2011. The hot summer of 2010: Redrawing the temperature record map of Europe. *Science* **332**: 220–224.
7. Ballester, J., J.-M. Robine, F.R. Herrmann, *et al.* 2011. Long-term projections and acclimatization scenarios of temperature-related mortality in Europe. *Nat. Commun.* **2**: 358.
8. Semenza, J.C., C.H. Rubin, K.H. Falter, *et al.* 1996. Heat-related deaths during the July 1995 heat wave in Chicago. *N. Engl. J. Med.* **335**: 84–90.
9. Kaiser, R., C.H. Rubin, A.K. Henderson, *et al.* 2001. Heat-related death and mental illness during the 1999 Cincinnati heat wave. *Am. J. Forensic Med. Pathol.* **22**: 303–307.
10. Robine, J.-M., S.L.K. Cheung, S. le Roy, *et al.* 2008 Death toll exceeded 70,000 in Europe during the summer of 2003. *C. R. Biol.* **331**: 171–178.
11. Ostro, B.D., L.A. Roth, R.S. Green, *et al.* 2009. Estimating the mortality effect of the July 2006 California heat wave. *Environ. Res.* **109**: 614–619.

12. Grange L., E. Simon-Loriere, A. Sakuntabhai, *et al.* 2014. Epidemiological risk factors associated with high global frequency of inapparent dengue virus infections. *Frontiers in Immunology* **5**:280.
13. WHO 2012, Dengue and Dengue Hemorrhagic Fever, Fact Sheet 117, revised February 2015. Geneva, World Health Organization (also available at: <http://www.who.int/mediacentre/factsheets/fs117/en/>; accessed October 2015).
14. Bhatt S., P. Gething, O. Brady, *et al.* 2013. The global distribution and burden of dengue. *Nature* **496**: 504-507.
15. WHO. 2012. Global strategy for dengue prevention and control 2012-2020. http://www.who.int/immunization/sage/meetings/2013/april/5_Dengue_SAGE_Apr2013_Global_Strategy.pdf. Accessed October 2015.
16. Guzman, M.G. & G. Kouri. 2002. Dengue: an update. *Lancet Infect. Dis.* **2**:33–42.
17. Gubler, D.J. 2002. Epidemic dengue/dengue hemorrhagic fever as a public health, social and economic problem in the 21st century. *Trends Microbiol.* **10**: 100–103.
18. Chen, L.H. & M.E. Wilson. 2008. The role of the traveler in emerging infections and magnitude of travel. *Med. Clin. N. Am.* **92**: 1409-1432.
19. Gubler, D.J. 2012. The economic burden of dengue. *Am. J. Trop. Med. Hyg.* **86**: 743–744.
20. Patz, J. A. & W. K. Reisen. 2001. Immunology, climate change and vector-borne diseases. *Trends Immunol.* **22**: 171–172.
21. Hales, S., N. de Wet, J. Maindonald, *et al.* 2002. Potential effect of population and climate changes on global distribution of dengue fever: an empirical model. *Lancet* **360**: 830–834.
22. Struchiner, C.J., J. Rocklöv, A. Wilder-Smith, *et al.* 2015. Increasing Dengue Incidence in Singapore over the Past 40 Years: Population Growth, Climate and Mobility. *PLoS ONE* **10**(8): e0136286.
23. Garrett-Jones, C. 1964. Prognosis for Interruption of Malaria Transmission through Assessment of the Mosquito's Vectorial Capacity. *Nature* **204**: 1173–1175.
24. Christophers, S. 1960. *Aedes aegypti*. The yellow fever mosquito. Its life history, bionomics and structure. Camb. Univ. Press Lond. 738 pp.
25. Barrera, R., M. Amador & G.G. Clark. 2006. Ecological factors influencing *Aedes aegypti* (Diptera: Culicidae) productivity in artificial containers in Salinas, Puerto Rico. *J. Med. Entomol.* **43**: 484–492.

- 1
2
3 26. Wong, J., S.T. Stoddard, H. Astete, *et al.* 2011. Oviposition site selection by the
4 dengue vector *Aedes aegypti* and its implications for dengue control. *PLoS Negl. Trop.*
5 *Dis.* **5**: e1015.
6
7
- 8 27. Scott, T.W., P.H. Amerasinghe, A.C. Morrison, *et al.* 2000. Longitudinal studies of
9 *Aedes aegypti* (Diptera: Culicidae) in Thailand and Puerto Rico: blood feeding
10 frequency. *J. Med. Entomol.* **37**: 89–101.
11
12
- 13 28. Rueda, L.M., K.J. Patel, R.C. Axtell, *et al.* 1990. Temperature dependent development
14 and survival rates of *Culex quinquefasciatus* and *Aedes aegypti* (Diptera, Culicidae). *J.*
15 *Med. Entomol.* **27**:892–898.
16
17
- 18 29. Tun-Lin, W., T.R. Burkot & B.H. Kay. 2000. Effects of temperature and larval diet on
19 development rates and survival of the dengue vector *Aedes aegypti* in north
20 Queensland, Australia. *Med. Vet. Entomol.* **14**: 31–37.
21
22
- 23 30. Padmanabha, H., E. Soto, M. Mosquera, *et al.* 2010. Ecological links between water
24 storage behaviors and *Aedes aegypti* production: implications for dengue vector
25 control in variable climates. *Ecohealth* **7**: 78–90.
26
27
- 28 31. Chadee, D.D., R.A. Ward & R.J. Novak. 1998. Natural habitats of *Aedes Aegypti* in
29 the Caribbean--a review. *J. Am. Mosq. Control Assoc.* **14**: 5-11.
30
31
- 32 32. Liu-Helmersson, J., H. Stenlund, A. Wilder-Smith, *et al.* 2014. Vectorial capacity of
33 *Aedes aegypti*: effects of temperature and implications for global dengue epidemic
34 potential. *PLoS One* **9**: e89783.
35
36
- 37 33. Watts, D., D. Burke, B. Harrison, *et al.* 1987. Effect of temperature on the vector
38 efficiency of *Aedes aegypti* for dengue 2 virus. *Am. J. Trop. Med. Hyg.* **36**: 143–152.
39
40
- 41 34. Muir, L.E. & B.H. Kay. 1998. *Aedes aegypti* survival and dispersal estimated by
42 mark-release-recapture in northern Australia. *Am. J. Trop. Med. Hyg.* **58**: 277–282.
43
44
- 45 35. Lambrechts, L., K.P. Paaijmans, T. Fansiri, *et al.* 2011. Impact of daily temperature
46 fluctuations on dengue virus transmission by *Aedes aegypti*. *Proc. Natl. Acad. Sci.*
47 *USA* **108**: 7460–7465.
48
49
- 50 36. Yang, H.M., M.L. Macoris, K.C. Galvani, *et al.* 2009. Assessing the effects of
51 temperature on the population of *Aedes aegypti*, the vector of dengue. *Epidemiol.*
52 *Infect.* **137**: 1188–1202.
53
54
- 55 37. Harrington, L.C., J.P. Buonaccorsi, J.D. Edman, *et al.* 2001. Analysis of survival of
56 young and old *Aedes aegypti* (Diptera: Culicidae) from Puerto Rico and Thailand. *J.*
57 *Med. Entomol.* **38**: 537-547.
58
59
60

- 1
2
3 38. Brady, O.J., M.A. Johansson, C.A. Guerra, *et al.* 2013. Modelling adult *Aedes aegypti*
4 and *Aedes albopictus* survival at different temperatures in laboratory and field settings.
5 *Parasite Vectors* **6**: 351.
6
7
8 39. Bouma, M.J., H.E. Sondorp & H.J. van der Kaay. 1994. Health and climate change.
9 *Lancet* **343**: 302.
10
11 40. Cash, B. A., X. Rodó & J. L. Kinter. 2009. Links between tropical Pacific SST and
12 cholera incidence in Bangladesh: role of the western tropical and central extratropical
13 Pacific. *Journal of Climate* **22**: 1641-1660.
14
15 41. Confalonieri, U., B. Menne, R. Akhtar, *et al.* 2007: Human health. Climate Change
16 2007: Impacts, Adaptation and Vulnerability. Contribution of Working Group II to the
17 Fourth Assessment Report of the Intergovernmental Panel on Climate Change, M.L.
18 Parry, O.F. Canziani, J.P. Palutikof, P.J. van der Linden and C.E. Hanson, Eds.,
19 Cambridge University Press, Cambridge, UK, 391-431.
20
21 42. Sachs, J. & P. Malaney. 2002. The economic and social burden of malaria. *Nature*
22 **415**: 680-685.
23
24 43. Linthicum, K.J., A. Anyamba, C.J. Tucker, *et al.* 1999. Climate and satellite indicators
25 to forecast Rift Valley fever epidemics in Kenya. *Science* **285**: 397-400.
26
27 44. Bicout, D.J. & P. Sabatier. 2004. Mapping Rift Valley Fever vectors and prevalence
28 using rainfall variations. *Vector-Borne Zoonotic Dis.* **4**: 33-42.
29
30 45. Thai, K.T., & K.L. Anders. 2011. The role of climate variability and change in the
31 transmission dynamics and geographic distribution of dengue. *Exp. Biol. Med.* **236**:
32 944-954.
33
34 46. Morin, C.W., A.C. Comrie & K.C. Ernst. 2013. Climate and dengue transmission:
35 evidence and implications. *Environ. Health Perspect.* **121**: 1264-1272.
36
37 47. Naish, S., P. Dale, J.S. Mackenzie, *et al.* 2014. Climate change and dengue: a critical
38 and systematic review of quantitative modelling approaches. *BMC Infect. Dis.* **14**: 167.
39
40 48. Lowe, R., B. Cazelles, R. Paul, *et al.* 2015. Quantifying the added value of interannual
41 climate variability in a spatio-temporal dengue model. *Stochastic Environmental*
42 *Research and Risk Assessment* doi: 10.1007/s00477-015-1053-1.
43
44 49. Hales, S., P. Weinstein, Y. Soares Y, *et al.* 1999. El Niño and the dynamics of
45 vectorborne disease transmission. *Environ. Health Perspect.* **107**: 99-102.
46
47 50. Gagnon, A.S., A.B. Bush & K.E. Smoyer-Tomic. 2001. Dengue epidemics and the El
48 Niño Southern Oscillation. *Clim. Res.* **19**: 35-43.
49
50
51
52
53
54
55
56
57
58
59
60

- 1
 - 2
 - 3
 - 4
 - 5
 - 6
 - 7
 - 8
 - 9
 - 10
 - 11
 - 12
 - 13
 - 14
 - 15
 - 16
 - 17
 - 18
 - 19
 - 20
 - 21
 - 22
 - 23
 - 24
 - 25
 - 26
 - 27
 - 28
 - 29
 - 30
 - 31
 - 32
 - 33
 - 34
 - 35
 - 36
 - 37
 - 38
 - 39
 - 40
 - 41
 - 42
 - 43
 - 44
 - 45
 - 46
 - 47
 - 48
 - 49
 - 50
 - 51
 - 52
 - 53
 - 54
 - 55
 - 56
 - 57
 - 58
 - 59
 - 60
51. Corwin, A.L., R.P. Larasati, M.J. Bangs, *et al.* 2001. Epidemic dengue transmission in southern Sumatra, Indonesia. *Trans. R. Soc. Trop. Med. Hyg.* **95**: 257-265.
52. Cazelles, B., M. Chavez, A.J. McMichael, *et al.* 2005. Nonstationary influence of El Niño on the synchronous dengue epidemics in Thailand. *PLoS Med.* **2**: e106.
53. Hallett, T.B., T. Coulson, J.G. Pilkington, *et al.* 2004. Why large-scale climate indices seem to predict ecological processes better than local weather. *Nature* **430**: 71-5.
54. Mammen, M.P., C. Pimgate, C.J. Koenraadt, *et al.* 2008. Spatial and temporal clustering of dengue virus transmission in Thai villages. *PLoS Med.* **5**: e205.
55. Honório, N.A., R.M. Nogueira, C.T. Codeço, *et al.* 2009. Spatial evaluation and modeling of Dengue seroprevalence and vector density in Rio de Janeiro, Brazil. *PLoS Negl. Trop. Dis.* **3**: e545.
56. Telle, O., A. Vaguet, N.K. Yadav *et al.* 2016. The spread of dengue in an endemic urban milieu – the case of Delhi, India. *PLoS One* **11**: e0146539.
57. Johansson, M.A., F. Dominici & G.E. Glass. 2009. Local and global effects of climate on dengue transmission in Puerto Rico. *PLoS Negl. Trop. Dis.* **3**: e382.
58. Beebe, N. W., R. D. Cooper, P. Mottram, *et al.* 2009. Australia’s dengue risk driven by human adaptation to climate change. *PLoS Negl. Trop. Dis.* **3**: e429.
59. United Nations. 2014. Department of Economic and Social Affairs, Population Division. World Urbanization Prospects, the 2014 Revision. <http://esa.un.org/unpd/wup/index.htm>. Accessed October 2015.
60. UN-HABITAT (United Nations Human Settlements Programme) 2003. Revised and updated version April 2010. Chapter 1: Development Context and the Millennium Agenda. The Challenge of Slums: Global Report on Human Settlements 2003. Available at www.unhabitat.org/grhs/2003.
61. Population Division of the Department of Economic and Social Affairs of the United Nations Secretariat. 2002. World Urbanization Prospects: The 2001 Revision.
62. Grimm, N.B., S.H. Faeth, N.E. Golubiewski, *et al.* 2008. Global Change and the Ecology of Cities. *Science* **319**: 756–760.
63. Kalnay, E. & M. Cai. 2003. Impact of urbanization and land-use change on climate. *Nature* **423**: 528–531.
64. Stewart, I.D. 2011. A systematic review and scientific critique of methodology in modern urban heat island literature. *Int. J. Climatol.* **31**: 200–217.
65. Oke, T.R. 1982. The Energetic Basis of the Urban Heat Island. *Quart. J. R. Met. Soc.* **108**: 1–24

- 1
2
3 66. Jonsson, P. 2004. Vegetation as an urban climate control in the subtropical city of
4 Gaborone, Botswana. *Int. J. Climatol.* **24**: 1307–1322
- 5
6 67. Buyantuyev, A. & J. Wu. 2010. Urban heat islands and landscape heterogeneity:
7 linking spatiotemporal variations in surface temperatures to land-cover and
8 socioeconomic patterns. *Landscape Ecol.* **25**: 17–33.
- 9
10
11 68. Arnfield, A.J. 2003. Two decades of urban climate research: A review of turbulence,
12 exchanges of energy and water, and the urban heat island. *Int. J. Climatol.* **23**: 1–26.
- 13
14 69. Ando, H., W. Morishima, H. Yokoyama, *et al.* 2009. Effects of Urban Geometry on
15 Urban Heat Islands in Tokyo. The seventh International Conference on Urban Climate,
16 29 June - 3 July 2009, Yokohama, Japan.
- 17
18
19 70. Fujibe, F. 2009. Detection of urban warming in recent temperature trends in Japan. *Int.*
20 *J. Climatol.* **29**: 1811–1822.
- 21
22
23 71. Fujibe, F. 2011. Urban warming in Japanese cities and its relation to climate change
24 monitoring. *Int. J. Climatol.* **31**: 162–173.
- 25
26 72. Hajat, S. & T. Kosatky. 2010. Heat-related mortality: a review and exploration of
27 heterogeneity. *J. Epidemiol. Community Health* **64**: 753-760.
- 28
29 73. Lai, L.W. & W.L. Cheng. 2010. Urban heat island and air pollution--an emerging role
30 for hospital respiratory admissions in an urban area. *J. Environ. Health* **72**: 32-35.
- 31
32
33 74. Araujo R.V., M.R. Albertini, A.L. Costa-da-Silva, *et al.* 2015. São Paulo urban heat
34 islands have a higher incidence of dengue than other urban areas. *Braz. J. Infect. Dis.*
35 **19**: 146-155.
- 36
37
38 75. Oke, T.R., 2007: "Siting and exposure of meteorological instruments at urban sites".
39 In: Air Pollution Modeling and its Application XVII Editors: Borrego, Carlos,
40 Norman, Ann-Lise (Eds.) 615-632, Springer
- 41
42
43 76. Yan, H., S. Fan, C. Guo, *et al.* 2014. Quantifying the Impact of Land Cover
44 Composition on Intra-Urban Air Temperature Variations at a Mid- Latitude City.
45 *PLoS One* **9**: e102124.
- 46
47
48 77. Oke, T.R., J.M. Crowther, K.G. McNaughton, *et al.* 1989. The micrometeorology of
49 the urban forest. *Phil. Trans. R. Soc. Lond. B* **324**: 335–349.
- 50
51
52 78. Chen, Y. & N.H. Wong. 2006. Thermal benefits of city parks. *Energ. Buildings* **38**:
53 105–120.
- 54
55 79. Mohan, M. & A. Kandya. 2015. Impact of urbanization and land-use/land-cover
56 change on diurnal temperature range: a case study of tropical urban airshed of India
57 using remote sensing data. *Sci. Total Environ.* **506-507**: 453-465.
- 58
59
60

- 1
2
3 80. Karl, T.R., P.D. Jones, R.W. Knight, *et al.* 1993. Asymmetric Trends of Daily
4 Maximum and Minimum Temperature. *Papers in Natural Resources*. Paper 185.
5
6 81. Akasaka, I., H. Ando & H. Yokoyama. 2009. Regional characteristics on diurnal
7 change of temperature in the Tokyo metropolitan area. The Seventh International
8 Conference on Urban Climate, 29 June - 3 July 2009, Yokohama, Japan.
9
10 82. Hayden, M.H., C.K. Uejio, K. Walker, *et al.* 2010. Microclimate and human factors in
11 the divergent ecology of *Aedes aegypti* along the Arizona, U.S./Sonora, MX border.
12 *Ecohealth* 7:64-77.
13
14 83. Reiskind, M.H. & L.P. Lounibos. 2013. Spatial and temporal patterns of abundance of
15 *Aedes aegypti* L. (*Stegomyia aegypti*) and *Aedes albopictus* (Skuse) [*Stegomyia*
16 *albopictus* (Skuse)] in southern Florida. *Med. Vet. Entomol.* 27:421-429.
17
18 84. Brière, J. P. Pracros, A.L. Roux, *et al.* 1999. A novel rate model of temperature
19 dependent development for arthropods. *Environ. Entomol.* 28: 22–29.
20
21 85. LaDeau, S. L., B. F. Allan, P. T. Leisnham *et al.* 2015. The ecological foundations of
22 transmission potential and vector-borne disease in urban landscapes. *Functional*
23 *Ecology* 29: 889-901.
24
25 86. Townroe, S. & A. Callaghan. 2014. British Container Breeding Mosquitoes: The
26 Impact of Urbanisation and Climate Change on Community Composition and
27 Phenology. *Plos One* 9: e95325.
28
29 87. Quintero, J., H. Brochero, P. Manrique-Saide, *et al.* 2014. Ecological, biological and
30 social dimensions of dengue vector breeding in five urban settings of Latin America: a
31 multi-country study. *BMC Infectious Diseases* 14: 38.
32
33 88. Levy, M. Z., C. M. Barbu, R. Castillo-Neyra, *et al.* 2014. Urbanization, land tenure
34 security and vector-borne Chagas disease. *Proc Biol Sci*, 281: 20141003.
35
36 89. Díaz-Nieto, L.M., A. Maciá, M.A. Perotti, *et al.* 2013. Geographical Limits of the
37 Southeastern Distribution of *Aedes aegypti* (Diptera, Culicidae) in Argentina. *PLoS*
38 *Negl. Trop. Dis.* 7: e1963.
39
40 90. Lee, D.J. & M.L. Debenham, Margaret Lee. & Australia. Department of Health. &
41 University of Sydney. School of Public Health and Tropical Medicine. 1987. *The*
42 *Culicidae of the Australasian region. Volume 5. Nomenclature, synonymy, literature,*
43 *distribution, biology and relation to disease : genus anopheles, subgenera Anopheles*
44 *Cellia / compiled by David J. Lee ... [et al.] ; edited by Margaret L.*
45 *Debenham* Australian Government Publishing Service Canberra.
46
47
48
49
50
51
52
53
54
55
56
57
58
59
60

- 1
 - 2
 - 3
 - 4
 - 5
 - 6
 - 7
 - 8
 - 9
 - 10
 - 11
 - 12
 - 13
 - 14
 - 15
 - 16
 - 17
 - 18
 - 19
 - 20
 - 21
 - 22
 - 23
 - 24
 - 25
 - 26
 - 27
 - 28
 - 29
 - 30
 - 31
 - 32
 - 33
 - 34
 - 35
 - 36
 - 37
 - 38
 - 39
 - 40
 - 41
 - 42
 - 43
 - 44
 - 45
 - 46
 - 47
 - 48
 - 49
 - 50
 - 51
 - 52
 - 53
 - 54
 - 55
 - 56
 - 57
 - 58
 - 59
 - 60
91. Schaffner F., M. Vazeille, C. Kaufmann, *et al.* 2011. Vector competence of *Aedes japonicus* for chikungunya and dengue viruses. *Eu. Mosq. Bull.* **29**: 141-142.
92. Benedict, M. Q., R.S. Levine, W.A. Hawley, *et al.* 2007. Spread of the Tiger: Global Risk of Invasion by the Mosquito *Aedes albopictus*. *Vector Borne Zoonotic Dis.* **7**: 76–85.
93. Kaufman, M.G. & D.M. Fonseca. 2014. Invasion biology of *Aedes japonicus japonicus* (Diptera: Culicidae). *Annu. Rev. Entomol.* **59**: 31-49.
94. <http://ecdc.europa.eu/en/healthtopics/vectors/mosquitoes/Pages/aedes-japonicus.aspx>. Accessed October 2015.
95. Jachowski L.A. 1954. Filariasis in American Samoa. V. Bionomics of the principal vector, *Aedes polynesiensis* Marks. *Am. J. Hygiene* **60**: 186-203.
96. Barbu, C.M., A. Hong, J.M. Manne *et al.* 2013. The effects of city streets on an urban disease vector. *PLoS Comput. Biol.* **9**: e1002801.
97. Census of India. 2001: <http://des.delhigovt.nic.in/census2001.htm>. Accessed October 2015.
98. Census of India. 2011: <http://www.census2011.co.in/>. Accessed October 2015.
99. Demographia (January 2015). Demographia World Urban Areas (11th ed.) www.demographia.com/db-worldua.pdf. Accessed November 2015.
100. Zerah, M.-H. 2000. *Water. Unreliable Supply in Delhi*. New Delhi: Manohar Publishers, 196 p.
101. Balaya, S., S.D. Paul, L.V. D'Lima, *et al.* 1969. Investigations on an outbreak of dengue in Delhi in 1967. *Indian J. Med. Res.* **57**: 767–774.
102. Diesh, P., S. Pattanayak, P. Singha, *et al.* 1972. An outbreak of dengue fever in Delhi—1970. *J. Commun. Dis.* **4**: 13–18.
103. Rao, C.V.R.M., S.K. Bagchi, B.D. Pinto, *et al.* 1985. The 1982 epidemic of dengue fever in Delhi. *Indian J. Med. Res.* **82**: 271–275.
104. Dar, L., S. Broor, S. Sengupta, *et al.* 1999. The first major outbreak of dengue hemorrhagic fever in Delhi, India. *Emerg. Infect. Dis.* **5**: 589–90.
105. Dar, L., E. Gupta, P. Narang P, *et al.* 2006. Cocirculation of dengue serotypes, Delhi, India, 2003. *Emerg. Infect. Dis.* **12**: 352–353.
106. Gupta, E., L. Dar, G. Kapoor, *et al.* 2006. The changing epidemiology of dengue in Delhi, India. *Virology Journal* **3**: 92.
107. Shepard, D.S., Y.A. Halasa, B.K. Tyagi, *et al.* 2014. Economic and disease burden of dengue illness in India. *Am. J. Trop. Med. Hyg.* **91**: 1235–1242.

- 1
2
3
4
5
6
7
8
9
10
11
12
13
14
15
16
17
18
19
20
21
22
23
24
25
26
27
28
29
30
31
32
33
34
35
36
37
38
39
40
41
42
43
44
45
46
47
48
49
50
51
52
53
54
55
56
57
58
59
60
108. Mondini A., R.V.dM Bronzoni, S.H.P Nunes, *et al.* 2009. Spatio-Temporal Tracking and Phylodynamics of an Urban Dengue 3 Outbreak in São Paulo, Brazil. *PLoS Negl. Trop. Dis.* **3**: e448.
109. Kutsuna, S. Y. Kato, M.L. Moi, *et al.* 2015. Autochthonous Dengue Fever, Tokyo, Japan, 2014. *Emerg. Infect. Dis.* **21**: 517–520.
110. Kumar V., V. Pande, A. Srivastava, *et al.* 2015 Comparison of *Ae. aegypti* breeding in localities of different socio-economic groups of Delhi, India. *Int. J. Mosquito Research* **2**: 83-88.
111. Troyo, A., D.O. Fuller, O. Calderón-Arguedas, *et al.* 2009. Urban structure and dengue fever in Puntarenas, Costa Rica. *Singap. J. Trop. Geogr.* **30**: 265–282.
112. Global Alert and Response – Impact of Dengue. Geneva: World Health Organization. 2013. Available from: <http://www.who.int/csr/disease/dengue/impact/en/>.
113. Murray, N.E.A., M.B. Quam & A. Wilder-Smith. 2013. Epidemiology of dengue: past, present and future prospects. *Clinical Epidemiology* **5**: 299–309.
114. La Ruche, G., Y. Souarès, A. Armengaud, *et al.* 2010. First two autochthonous dengue virus infections in metropolitan France, September 2010. *Euro. Surveill.* **15**: pii19676.
115. <http://www.invs.sante.fr/Dossiers-thematiques/Maladies-infectieuses/Maladies-a-transmission-vectorielle/Chikungunya/Donnees-epidemiologiques/France-metropolitaine/Chikungunya-et-dengue-Donnees-de-la-surveillance-renforcee-en-France-metropolitaine-en-2015>. Accessed October 2015.
116. Alves, M.J., P.L. Fernandes, F. Amaro, *et al.* 2013. Clinical presentation and laboratory findings for the first autochthonous cases of dengue fever in Madeira island, Portugal, October 2012. *Euro. Surveill.* **18**: pii: 20398.
117. Effler, P.V., L. Pang, P. Kitsutani, *et al.* 2005. Dengue fever, Hawaii, 2001-2002. *Emerg. Infect. Dis.* **11**: 742-749.
118. Murray, K.O., L.F. Rodriguez, E. Herrington, *et al.* 2013. Identification of dengue fever cases in Houston, Texas, with evidence of autochthonous transmission between 2003 and 2005. *Vector Borne Zoonotic Dis.* **13**: 835-45.
119. Walawender, J.P., M. Szymanowski, M.J. Hajoto, *et al.* 2014. Land Surface Temperature Patterns in the Urban Agglomeration of Krakow (Poland) Derived from Landsat-7/ETM+ Data. *Pure and Applied Geophysics* **171**: 913–940.

Figure Legends

Figure 1. The dependence of vector parameters and relative vectorial capacity (rVc) on temperature and DTR. A) Vector parameters from the literature. Different scales are used for each parameter to be able to put them on the same graph. n , Extrinsic Incubation Period, μ_m , mortality and a , biting rate; bottom row: b_m , human to vector transmission probability, b_h vector to human transmission probability, and rVc. B) rVc dependence on temperature when DTR is 0°C. C) and D) DTR dependence of rVc at average temperatures of 26°C and 14°C, respectively. From Liu-Helmersson *et al.*³²

Figure 2. The effect of temperature and DTR on the vector parameters and relative vectorial capacity (rVc). Top row: n , Extrinsic Incubation Period, μ_m , mortality and a , biting rate; bottom row: b_m , human to vector transmission probability, b_h vector to human transmission probability, and rVc. Average daily temperature (the horizontal axis) and DTR (the vertical axis) both have units of °C. The color bar on the right side of each graph describes the value of the parameter. A higher rVc corresponds to a greater dengue epidemic potential. From Liu-Helmersson *et al.*³²

Figure 3A. Delhi dengue cases. Kernel Density Estimation of dengue cases registered in the sentinel hospitals of Delhi 2008-2010.⁵⁶

Figure 3B. Night time land surface temperatures in 2013 and socio-economic characteristics typology of Delhi. The city of Delhi has been trimmed to exclude rural areas, which are less affected by dengue. At-satellite brightness temperature was retrieved from from LANDSAT 8 TIRS (band 10) applying the method described by Walawender *et al.*¹¹⁹ (the thermal image was taken on November, 15th 2013 around 5:00 am). Land surface temperature was computed using the correction equations given by the same authors (land surface emissivity and atmospheric bias corrections).

Figure 3C. Winter diurnal temperature range from 2001 to 2015 has been retrieved using MODIS-TERRA MOD11A2 eight-day thermal images. For each year, winter DTR was calculated taking into account thermal images taken during the three coldest month of the winter season according to climate normals: December of the previous year, January and February.

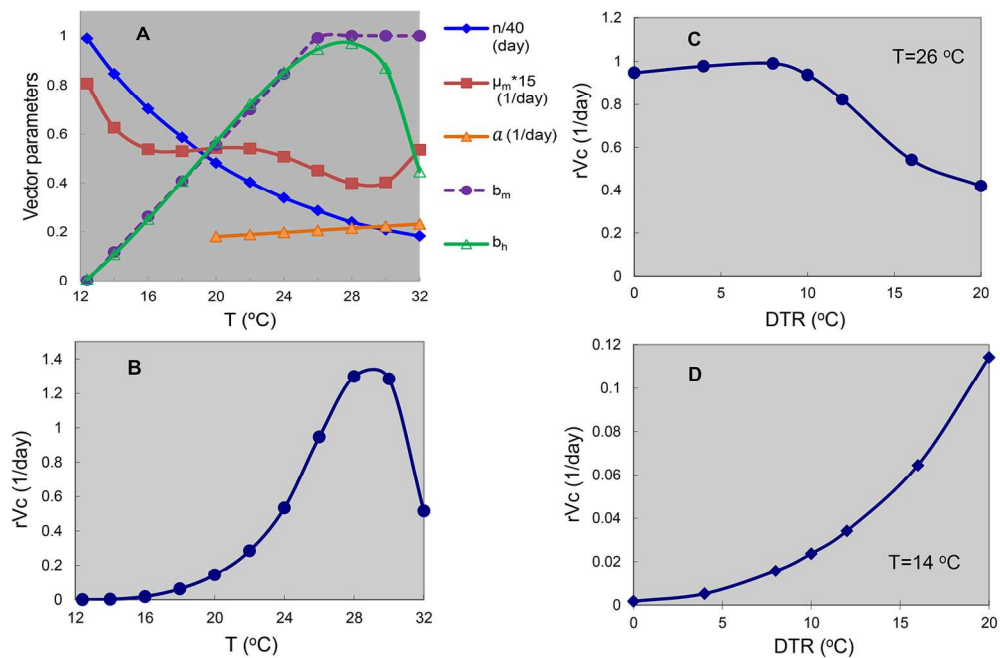


Figure 1. The dependence of vector parameters and relative vectorial capacity (rVc) on temperature and DTR. A) Vector parameters from the literature. Different scales are used for each parameter to be able to put them on the same graph. n , Extrinsic Incubation Period, μ_m , mortality and a , biting rate; bottom row: b_m , human to vector transmission probability, b_h vector to human transmission probability, and rVc. B) rVc dependence on temperature when DTR is 0°C. C) and D) DTR dependence of rVc at average temperatures of 26°C and 14°C, respectively. From Liu-Helmersson et al.³²
159x106mm (300 x 300 DPI)

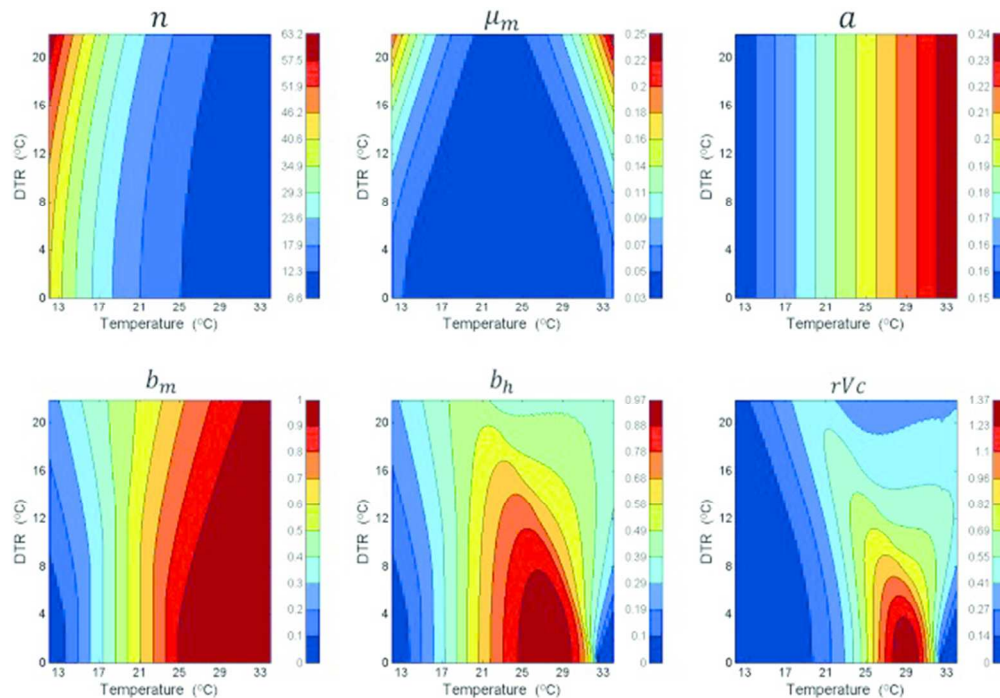


Figure 2. The effect of temperature and DTR on the vector parameters and relative vectorial capacity (rVc). Top row: n , Extrinsic Incubation Period, μ_m , mortality and a , biting rate; bottom row: b_m , human to vector transmission probability, b_h vector to human transmission probability, and rVc . Average daily temperature (the horizontal axis) and DTR (the vertical axis) both have units of °C. The color bar on the right side of each graph describes the value of the parameter. A higher rVc corresponds to a greater dengue epidemic potential. From Liu-Helmersson et al.³²

58x40mm (300 x 300 DPI)

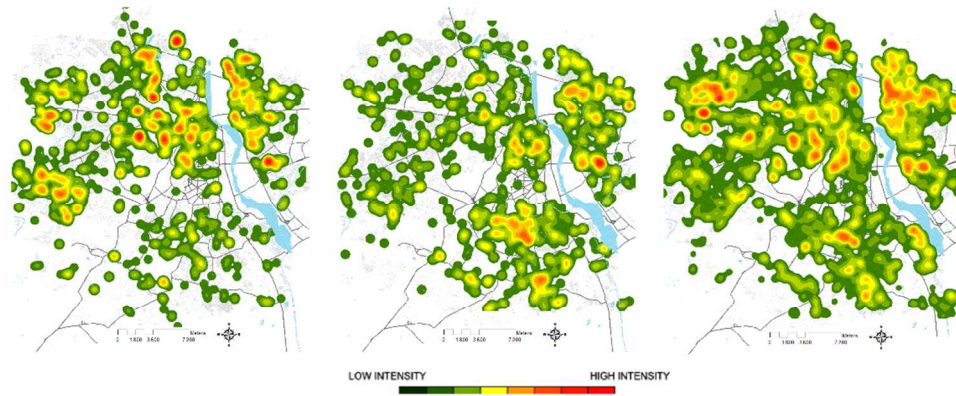


Figure 3A. Delhi dengue cases. Kernel Density Estimation of dengue cases registered in the sentinel hospitals of Delhi 2008-2010.⁵⁶
316x130mm (96 x 96 DPI)

1
2
3
4
5
6
7
8
9
10
11
12
13
14
15
16
17
18
19
20
21
22
23
24
25
26
27
28
29
30
31
32
33
34
35
36
37
38
39
40
41
42
43
44
45
46
47
48
49
50
51
52
53
54
55
56
57
58
59
60

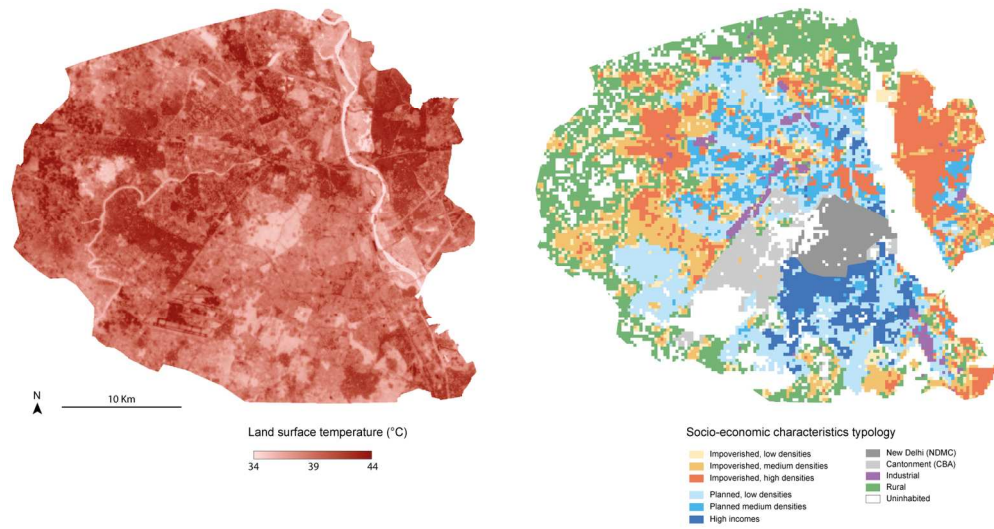


Figure 3B. Night time land surface temperatures in 2013 and socio-economic characteristics typology of Delhi. The city of Delhi has been trimmed to exclude rural areas, which are less affected by dengue. At-satellite brightness temperature was retrieved from from LANDSAT 8 TIRS (band 10) applying the method described by Walawender et al.¹¹⁹ (the thermal image was taken on November, 15th 2013 around 5:00 am). Land surface temperature was computed using the correction equations given by the same authors (land surface emissivity and atmospheric bias corrections)
299x157mm (150 x 150 DPI)

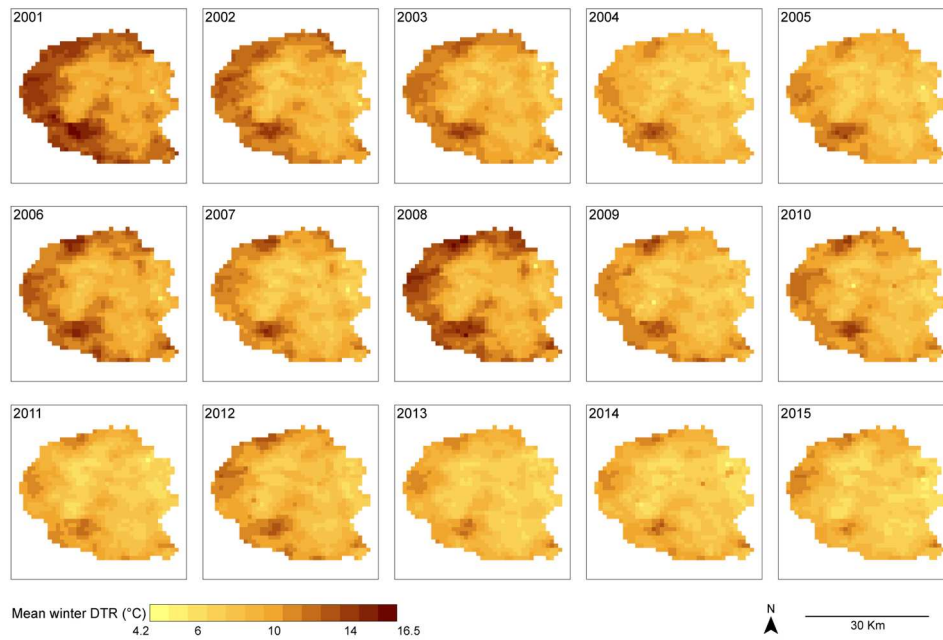


Figure 3C. Winter diurnal temperature range from 2001 to 2015 has been retrieved using MODIS-TERRA MOD11A2 eight-day thermal images. For each year, winter DTR was calculated taking into account thermal images taken during the three coldest month of the winter season according to climate normals: December of the previous year, January and February.
297x209mm (150 x 150 DPI)

Table 1. Odd ratios (OR) for the probability of a house to be controlled positive for *Aedes aegypti* larvae (House Index) according to socio-economic status all year long and only during winter. 95% CI – 95% Confidence Intervals. ORs and P-values calculated by logistic regression of houses positive over houses tested. Village denotes “urban villages”, which are rural villages that have become urbanized with expansion of the city.

Socio-economic status	All year			Winter		
	OR	95% CI	P-value	OR	95% CI	P-value
Impoverished low density	0.84	0.62-1.13	0.248	0.60	0.39-0.91	0.017
High Income	0.57	0.35-0.94	0.028	0.30	0.11-0.78	0.014
Middle Income	0.82	0.62-1.08	0.153	0.82	0.61-1.11	0.198
Village	0.87	0.65-1.17	0.366	0.92	0.68-1.25	0.604
Impoverished high density	Reference			Reference		