

Supplementary data file for the manuscript :

Polar N-terminal residues conserved in type 2 secretion pseudopilins determine subunit targeting and membrane extraction steps during fibre assembly

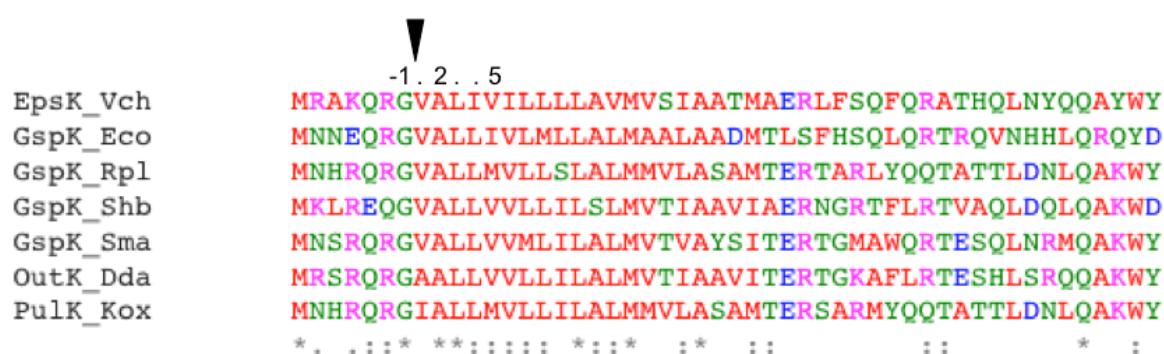
Javier Santos-Moreno¹⁻⁵, Alexandra East⁶, Ingrid Guilvout⁷, Nathalie Nadeau⁷, Peter J. Bond^{8,9}, Guy Tran Van Nhieu²⁻⁵ and Olivera Francetic^{7*}

Journal of Molecular Biology 2017 Jun2; 429(11):1746-65.

Supplementary Table S1

Oligo Name	Sequence
PulG T2A 5	CAGCGCGGATTGCGCTTACTGGAAATC
PulG T2A Rev	GATTTCCAGTAAGGCGAATCCGCGCTG
PulG T2A Kpn	CGGGTACCATTGCGCTTACTGGAAATC
PulG P22A 5	CCAGCCTCGTGGTGGCCAACCTGATGGGCAAC
PulG P22A 3	GTTGCCCATCAGGTTGGCCACCACGAGGCTGG
PuIL Eco 3	CACGAATTCCTGTTGCCATAAGGCGAG
PulM 3	GACTGCAAGCTTGCAGGCCGATAGTGAGTCTA
PulM 5-1	TGAGGCGAATTCGAGGTTTCGCGTGCAGAC
PuL Eco	CAAGAATTCAGCGGCGCTACGGAATC
PuL Hind	CACAAGCTTCTGTTGCCATAAGGCGAG

Supplementary Figures



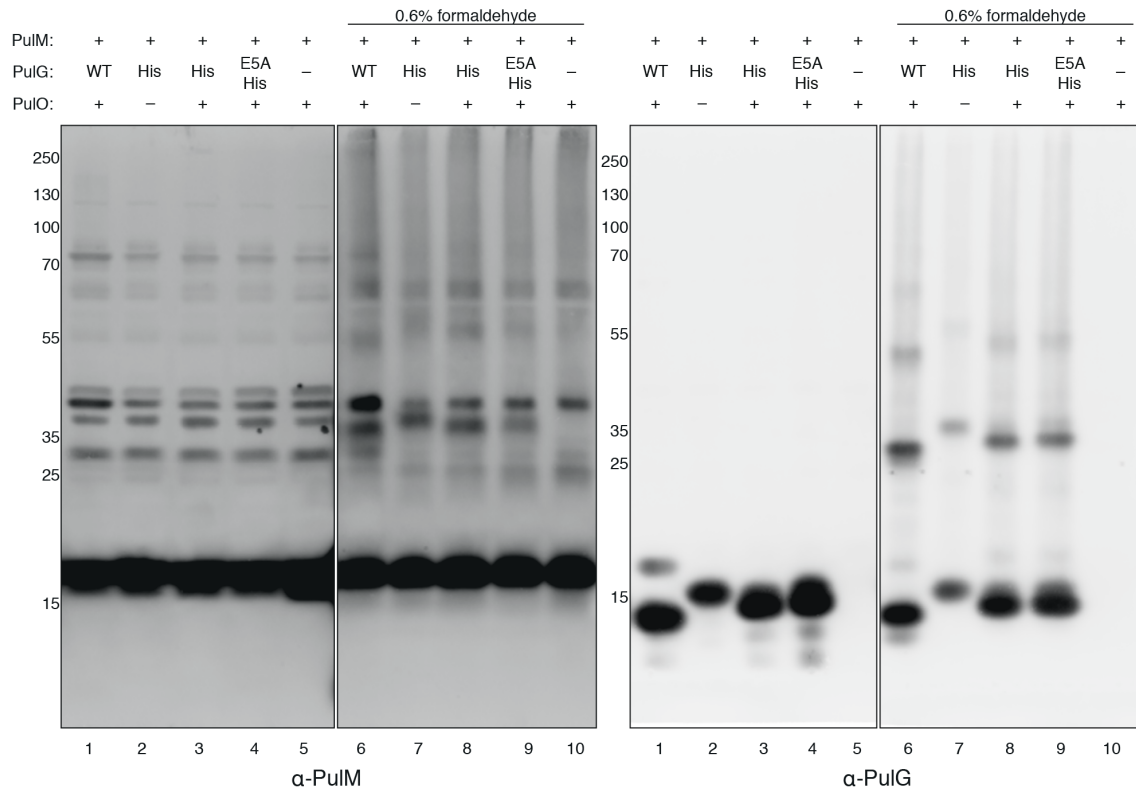


Fig. S2. PulM and PulG interact in the context of the functional Pul T2SS.

Uncropped α -PulM and α -PulG blots showing samples corresponding to the *in vivo* cross-linking described in Fig. 6 before and after the FA treatment. Mw markers (in kDa) and lane numbers are indicated. The strains and technical procedures are described in Fig. 6 and in the Materials and Methods.