



**HAL**  
open science

## Selection of similar single domain antibodies from two immune VHH libraries obtained from two alpacas by using different selection methods.

Tengfei Li, Matthias Vandesquille, Sylvie Bay, Marc Dhenain, Benoît Delatour, Pierre Lafaye

### ► To cite this version:

Tengfei Li, Matthias Vandesquille, Sylvie Bay, Marc Dhenain, Benoît Delatour, et al.. Selection of similar single domain antibodies from two immune VHH libraries obtained from two alpacas by using different selection methods.. Immunology Letters, 2017, 188, pp.89-95. 10.1016/j.imlet.2017.07.001 . pasteur-01580563

**HAL Id: pasteur-01580563**

**<https://pasteur.hal.science/pasteur-01580563v1>**

Submitted on 1 Sep 2017

**HAL** is a multi-disciplinary open access archive for the deposit and dissemination of scientific research documents, whether they are published or not. The documents may come from teaching and research institutions in France or abroad, or from public or private research centers.

L'archive ouverte pluridisciplinaire **HAL**, est destinée au dépôt et à la diffusion de documents scientifiques de niveau recherche, publiés ou non, émanant des établissements d'enseignement et de recherche français ou étrangers, des laboratoires publics ou privés.



Distributed under a Creative Commons Attribution - NonCommercial - ShareAlike 4.0 International License

## Accepted Manuscript

Title: Selection of similar single domain antibodies from two immune VHH libraries obtained from two alpacas by using different selection methods

Authors: Tengfei Li, Matthias Vandesquille, Sylvie Bay, Marc Dhenain, Benoît Delatour, Pierre Lafaye



PII: S0165-2478(17)30116-5  
DOI: <http://dx.doi.org/doi:10.1016/j.imlet.2017.07.001>  
Reference: IMLET 6063

To appear in: *Immunology Letters*

Received date: 9-3-2017  
Revised date: 14-6-2017  
Accepted date: 2-7-2017

Please cite this article as: Li Tengfei, Vandesquille Matthias, Bay Sylvie, Dhenain Marc, Delatour Benoît, Lafaye Pierre. Selection of similar single domain antibodies from two immune VHH libraries obtained from two alpacas by using different selection methods. *Immunology Letters* <http://dx.doi.org/10.1016/j.imlet.2017.07.001>

This is a PDF file of an unedited manuscript that has been accepted for publication. As a service to our customers we are providing this early version of the manuscript. The manuscript will undergo copyediting, typesetting, and review of the resulting proof before it is published in its final form. Please note that during the production process errors may be discovered which could affect the content, and all legal disclaimers that apply to the journal pertain.

# **Selection of similar single domain antibodies from two immune VHH libraries obtained from two alpacas by using different selection methods**

Tengfei Li<sup>a, b, c</sup>, Matthias Vandesquille<sup>d</sup>, Sylvie Bay<sup>d,e</sup>, Marc Dhenain<sup>f</sup>, Benoît Delatour<sup>b</sup> and Pierre Lafaye<sup>a,\*</sup>

<sup>a</sup> Institut Pasteur, CITECH, Plateforme d'Ingénierie des Anticorps, Paris, France

<sup>b</sup> Sorbonne Universités, UPMC Univ. Paris 06 UMR S 1127, Inserm U 1127/ CNRS UMR 7225, Paris, France

<sup>c</sup> Université Paris Diderot-Paris 7, Paris, France

<sup>d</sup> Institut Pasteur, Unité de Chimie des Biomolécules, Paris, France

<sup>e</sup> CNRS UMR 3523, Paris, France

<sup>f</sup> Commissariat à l'Energie Atomique et aux Energies Alternatives (CEA), Direction de la Recherche Fondamentale (DRF), MIRCen, CNRS, Université Paris-Sud, Université Paris-Saclay UMR 9199, Neurodegenerative Diseases Laboratory, Fontenay-aux-Roses, France

E-mail address : plafaye@pasteur.fr

## HIGHLIGHTS

- VHHs against GFAP have been obtained by Ribosome display after immunization of one alpaca with GFAP
- VHHs against GFAP have been obtained by phage display after immunization of another alpaca with a human brain extract containing GFAP
- All the VHHs were closely related and one VHH was found to be strictly identical in both studies.

## ABSTRACT

The two most used methods to select camelid single-domain antibody-fragments

(VHHs) are: displaying their repertoires on the surface of filamentous bacteriophages (phage display) or linking them to ribosomes (ribosome display). In this study, we compared specific VHHs isolated from two different immune libraries coming from two different alpacas by using these two selection methods.

Three anti-GFAP (glial fibrillary acidic protein) VHHs were derived from an immune library obtained by ribosome display after immunization of one alpaca with purified GFAP, a protein expressed by astroglial cells. In parallel, three other anti-GFAP VHHs were derived from an immune library by phage display after immunization of another alpaca with a human brain tissue extract containing GFAP. All the VHHs were closely related and one VHH was found to be strictly identical in both studies. This highlights the selection pressure exerted by the camelid immune system to shape the paratope of an antibody against a defined antigen.

Keywords.: Anti GFAP VHH, VH, VHH, phage display, ribosome display.

## 1. Introduction

Besides producing conventional tetrameric antibodies, camelids also display functional antibodies composed of homodimerized heavy chains. These antibodies lacking light chains, interact with antigens by the virtue of only one single variable domain of the heavy chain, referred to as VHH to distinguish it from VH of conventional antibodies [1]. VHHs possess a number of advantages for antibody engineering when compared with the conventional antibody fragments (Fab: Fragment antigen-binding or scFv: Single-chain variable fragment). VHHs are highly soluble and can be expressed at high levels in the periplasm and the cytoplasm of *E. coli* and eukaryotic cells [2,3]. Due to their relatively small size (14-17 kDa), VHHs offer also many advantages in terms of structural analysis and in diagnostic applications requiring tissue penetration [2–9]. Achour I *et al*, 2008 [10] demonstrated

that a single immunoglobulin heavy chain locus in alpaca chromosome 4 contains all of the genetic elements required for generation of the two types of antibodies.

Phage and ribosome display are ideal tools of widespread use for the selection of different antibody fragments [11,12]. Phage display was first described by Smith [13] and McCafferty *et al* [14] used it successfully for the selection of antibodies for the first time in 1990. Compared with other display technologies, phage display possesses many advantages: robustness, simplicity and stability of the phage particles and the selection can be performed on cell surface, tissue sections and *in vivo* [15–18].

However, phage-display libraries sizes are restricted to  $10^{10}$ - $10^{11}$  by the efficiency of bacterial transformation. *In vitro* display technologies have since been developed as an alternative, the most widely used being ribosome display [19]. Hanes *et al* successfully selected antibody fragments by using this method in 1998 and 2000 [20,21]. Despite many improvements made recently, ribosome display is still challenging to perform for selection on cell surfaces or against non-purified antigens. On the other side, a strong advantage of ribosome display over phage display, is that the encoded DNA does not need to be imported into a host because DNA amplification and protein synthesis occurs totally *in vitro*. As a consequence, ribosome display libraries can allow more diversity with possibly more than  $10^{13}$  binders [12].

Here we wanted to compare VHHs directed against the same protein obtained from two immune libraries by using the two pre-cited most-used selection techniques for antibody screening. The antigen of interest was GFAP (glial fibrillary acidic protein), a well-known marker of astrocytes. Two alpacas were immunized either with a human brain extract that contained GFAP as well as numerous other proteins/peptides, or with purified human GFAP. Then immune libraries were prepared from each animal. Using phage display or ribosome display applied to the two respective different immune libraries, we have selected closely related anti-GFAP VHHs. Unexpectedly one common VHH was isolated from these two different libraries. This emphasizes the strength of selection pressure exerted by the camelid immune system to shape the paratope of an antibody against a defined and highly specific antigen and highlights

that selection of a relevant VHH against an epitope is not always dependent on the selection method.

## 2. Materials and methods

### 2.1. Immunization

Postmortem brain tissue (hippocampal region) from a patient with Alzheimer's disease was obtained from the NeuroCEB brain bank. This bank is associated to a brain donation program run by a consortium of patient associations and declared to the Ministry of Research and Universities, as requested by French Law. An explicit written consent was obtained for the brain donation in accordance with the French Bioethical Laws. A brain homogenate was performed with this brain sample according to Mercken M *et al* 1992 [22]. Briefly, tissues are homogenized in 10 mM Tris, 1 mM EGTA, 0.8% NaCl, 10% sucrose buffer containing protease and phosphatase inhibitors (Pierce), followed by centrifugation at 27,000 g for 20 min. 1% Beta-mercaptoethanol and 1% N-Laurylsarcosine is added to the supernatant and the mixture is incubated for 2.5 h at 37°C. After centrifugation at 100,000g for 35 min, the pellet is homogenized in PBS (Phosphate-buffered saline) at a concentration of 1 mg/ml. This human brain extract is referred to as Sg4697. One alpaca was injected with 90 µl of the mixture mixed with 90 µl of Freund complete adjuvant for the first immunization, and with 90 µl of Freund incomplete adjuvant for the following immunizations. Another alpaca was previously immunized with purified human GFAP (USBiological) [8]. In France, an ethical approval is not required for immunization of camelids with Freund (in-) complete adjuvant. The immune responses were monitored by titration of serum samples by ELISA on coated GFAP. The bound alpaca antibodies were detected with polyclonal rabbit anti-alpaca IgGs [23]. The same procedure was performed on a murine brain extract. The extract was referred to as mWT45.

### 2.2. Library construction, selection and expression of VHH

The blood of the animal immunized with the human brain extract was collected. The selection of cDNA coding only for VHH were realized according to Lafaye *et al*,

2009, 1995 [23,24]. The *vhh* genes were then cloned into phagemid vector pHEN1 by using primers contained enzymatic NcoI and NotI restriction sites at the 5' and 3' ends, respectively. The size of the library was  $3 \times 10^8$  cfu.

Phage display protocols were performed as described in Lafaye *et al*, 2009 [23]. Briefly  $10^{13}$  phage-VHH diluted in PBS were used to perform a panning cycle by using saturated Nunc immunotubes (InterMed) coated with human brain extract (10  $\mu\text{g/ml}$ ). To increase the stringency, different blocking buffers for each panning were used: 2% skimmed milk as saturating agent for the first round; 5% BSA (Bovine Serum Albumin) and Odyssey blocking buffer (LI-COR Biosciences) diluted at  $\frac{1}{4}$  for the second and third one.

Sixty-one individual clones were randomly chosen and tested by ELISA against Sg4697 and BSA. The DNA corresponding to the positive VHHs was sequenced by GATC Biotech. The sequences were processed with DNA strider and analyzed using ClustalW2-Multiple Sequence Alignment of EMBL-EBI.

The blood of the animal immunized with GFAP was collected and selection of cDNA coding for VHH was performed as described earlier. The *vhh* population was converted to ribosome display format using PCR and transcribed to mRNA [8].

Selection of ternary complexes involving mRNA, ribosome and functional VHH was performed on GFAP as described by Perruchini *et al*, 2009 [8].

The VHH sequences were analyzed at the genomic level using IMGT (International ImMunoGeneTics information system) alpaca genomic database.

To summarize, the VHHs A12, G110, C5F7, C7G7, B70, B7, G11 and H8 were obtained by phage display, the VHHs E9, E3 and A10 were obtained by ribosome display.

Specific *vhh* genes were subcloned in a modified pASK-IBA2 vector (Genosys Iba) containing the NcoI and NotI restriction sites. pASK-IBA2 allows the periplasmic expression of a strep-tag at the C-terminal end in frame with the VHH. Transformed *E. coli* XL2-Blue ultracompetent cells expressed VHHs in the periplasm after induction by anhydrotetracycline (200  $\mu\text{g/l}$ ) for 16 h at 20°C. After centrifugation, cells were resuspended in 100 mM Tris-HCl pH 8, 150 mM NaCl, 1 mM EDTA, then lysed by

polymyxin B sulfate (1mg/ml Fluka) for 1 h at 4°C, the periplasmic extract being obtained after centrifugation. Purified VHHs were obtained by Strep-Tactin Sepharose column (Iba) according to the manufacturer's instructions.

### 2.3. ELISA

Microtitre plates (Nunc) were incubated with 1 µg/mL of GFAP diluted in PBS overnight at 4°C. Plates were washed 4 times with PBS containing 0.1% (w/v) Tween-20 (buffer A) and saturated with buffer A containing 0,5% (w/v) gelatin (buffer B) for 30 min. Sera were then added. Plates were incubated for 1 h at 37°C and washed prior the addition of rabbit anti-alpaca Ig followed by peroxidase – conjugated goat anti-rabbit Igs (ICN biomedical).

A competition assay was performed to determine VHH-binding sites. Various concentrations of His-Tagged VHH H8/E9 was incubated into wells coated with GFAP for 1 h at 37°C. Plates were washed and strep-tagged VHHs (H8/E9, B7 and G11) were added. After additional incubation for 1 h at 37°C, the presence of the strep-tagged VHHs was revealed by the addition of an home-made anti-strep tag mAb (eBioscience) followed by peroxidase–conjugated goat anti mAb (ICN biomedical).

### 2.4. Western Blot

To control the VHH specificity by WB, 10 µl of diluted (1:10) Sg4697 human and mWT45 mouse brain extracts and 1µg of human GFAP (USBiological) were used. Protein samples were treated at 70°C for 10 min in reducing conditions. Following the separation by polyacrylamide gel electrophoresis (PAGE) using NuPAGE Novex 4-12% Bis-Tris gels, semi-dry transfer onto Hybond-C (Amersham) was performed, the membranes were blocked in a 4% skimmed milk solution. Purified strep-tagged VHHs (1 µg/ml) were used as primary antibodies at 4°C overnight. An in-house anti-strep tag mouse mAb (C23-21) was added at 1 µg/ml and incubated for 1h at 37°C. Peroxydase-labeled goat anti-Mouse Ig 1:10000 (Vector) was added and incubated for 1h at 37°C. Finally, peroxidase activity was visualized using a chemiluminescent kit (Amersham).

### 2.5. Immunohistochemistry

Adult C57BL6 mice were euthanized by intraperitoneal injection of sodium



pentobarbital (CEVA). Brains were then fixed by intracardiac perfusion of 4% paraformaldehyde in PBS, and postfixed in the same fixative overnight at 4°C. Forty micrometer-thick coronal brain sections were then prepared in PBS using a vibratome (Leica VT1000S). The sections were pretreated for 10 min with 1% hydrogen peroxide to neutralize endogenous peroxidase. Non-specific binding was blocked by incubation of the sections for 40 min with Odyssey blocking buffer (LI-COR Biosciences) supplemented with 0.2% Triton X-100. The sections were then incubated with 1 µg/ml VHH-Strep-tag overnight at 4°C in the same blocking buffer. After washing in PBS 0.2% Triton, sections were then incubated with biotinylated anti-strep tag mAb C23-21 at 1 µg/ml for 1h, followed by ABC complex (Vector) for 30 min, and then with DAB (Diaminobenzidine) at 0.5mg/ml as chromogen. After DAB processing, sections were collected on superfrost glass slides, air dried at room temperature overnight, and then dehydrated by placing the slides in graded ethanol solutions (5 min in 70% and 90% ethanol respectively and 5 min in 100% ethanol twice) and xylene (5 min 3 times), and finally mounted in Eukitt mounting medium (O. Kindler GmbH).

## 2.6. Measurement of VHH affinity

Affinity was measured in solution [8,25]. Briefly, VHH samples were incubated overnight with increasing amounts of GFAP (Millipore) at concentrations ranging from  $10^{-11}$  to  $10^{-7}$  M. The remaining free antigen binding sites were then quantified by ELISA using an anti-His tag mAb, followed by an anti-mouse  $\beta$ -galactosidase conjugate and 4-methylumbelliferyl  $\beta$ -D galactoside substrate. Fluorescence was read at 460 nm after excitation at 355 nm. KD was estimated from the slope of the regression curve obtained by plotting the reciprocal of the fraction bound antibody versus the reciprocal of the molar concentration of the antigen.

### 3. Results

#### 3.1. Obtention of VHHs using phage or ribosome display and comparison of their sequences

One alpaca was immunized with human brain extract from an Alzheimer's patient presenting severe brain neuroinflammation, including reactive astrogliosis. A VHH phage display library was prepared and the selection of clones was performed against the same human brain extract. After 3 rounds of panning, 221 clones were tested in ELISA against the brain extract and BSA (a non-relevant antigen) to discriminate specific from non-specific clones. Sixty-one clones were identified as positive, 34 were sequenced, revealing only 8 different sequences, A12, G110, C5F7, C7G7, B70, B7, G11 and H8 (Fig. 1).

A12 appeared most frequently with 19 occurrences and G110 was found 5 times. C5F7 and C7G7 appeared both 3 times. B70 was detected only once. B7, G11 and H8 (one occurrence each) share the same CDRs.

We analyzed the biochemical properties of these VHHs obtained from the phage display library. After cloning in pASK vector and periplasmic expression, the purified VHHs with a strep-tag at the C-terminus were obtained. Until now, for A12, B70, C7G7, G110 and C5F7 no accurate antigen target has been identified in immunohistochemistry using mouse brain tissue.

Interestingly, we found that the new VHHs B7, H8 and G11 obtained by phage display are closely related to the anti-GFAP VHHs previously isolated after ribosome display screening. Indeed, another alpaca was immunized with purified human GFAP. Lymphocytes and VHH corresponding DNA were isolated, the VHH-coding mRNA sequences were selectively amplified. Three VHHs (E9, E3 and A10) with a high affinity for GFAP and their corresponding cDNA were selected by ribosome display [8] (Fig. 2). Also, one VHH with strictly identical sequence was isolated by the two procedures (H8 and E9 [8], respectively) (Fig. 1).

As the recovery of a same VHH from two different animals with two different methods was totally unexpected we then analyzed the polyclonal serum of both alpacas for their ability to recognize GFAP by ELISA (Fig. 3). Notably, the serum of

the alpaca immunized with the brain extract did recognize GFAP, although with a slight reactivity, while the polyclonal serum of the alpaca immunized with GFAP presented a high titer of anti-GFAP, as expected. In parallel we used a polyclonal serum taken from a third alpaca which had never been immunized with human GFAP. No GFAP recognition was observed with this serum. The low titer of GFAP-specific antibodies in the serum of the animal immunized with human brain extract also emphasized the efficiency of the phage display selection method to recover minor clones.

### 3.2. Biochemical characterization of the anti GFAP VHHs

Western blot experiment was performed with VHHs H8/E9, B7 and G11. Three samples were analysed: human brain extract (Sg4697), C57B/6 adult wild type mouse brain extract (mWT45) and the purified GFAP. WB analysis showed that the different VHHs labelled several bands between 35 and 55 kDa in human brain extract (Fig. 4A). Similar outcomes had already been observed by immunoblot using anti-GFAP antibodies on human brain extract, due to different isoforms of the protein in humans [8,26]. The VHHs labelled one band just below 55 kDa in mouse brain extract, in accordance with the fact that only one main isoform is expressed in mice (Fig. 4A). They also recognized the GFAP protein as a positive control (Fig. 4B).

To determine whether the VHHs recognized the same epitope, competition among the 3 VHHs for binding to GFAP was carried out as described in “Materials and Methods”. The binding of strep-tagged VHHs decreased as a function of increasing concentrations of the his-tagged VHH H8/E9 (Fig 5), suggesting that VHHs recognize the same epitope, or at least closely related epitopes, on GFAP.

H8/E9, B7 and G11 obtained either after immunization with purified human GFAP or with human brain extract strongly and specifically immunodetected GFAP in astrocytes in mouse brain tissue (Fig. 6), which was normally expected, as mouse GFAP protein showed 91% sequence identity to that of human [27].

The affinity of VHHs obtained by the two methods was measured by ELISA [8,25].

A10, E9, H8 and G11 had affinities in the nanomolar range while the affinity of E3

was in the micromolar range and B7 had an affinity of  $7.1 \times 10^{-10}$  M, 8-fold higher than the affinity of VHH H8 and VHH E9 respectively (Table 1).

For E3, the presence of a proline at position 25 instead of a serine probably induced a modification of the CDR1 loop as proline is usually found in sharp turns [8,28]. This modification could alter E3 functionality as reflected by the sharp decrease of its affinity for GFAP. B7 had a higher affinity when compared to other VHHs. The differences between B7 and both VHHs H8 and E9 were Leu11, Glu13 and Ala89 in B7 instead of Ser11, Gln13 and Glu89 in H8/E9 (Fig. 1), This was associated to local charge modifications in B7: an extra negative charge introduced at position 13 and a negative charge removed at position 89. These features might positively influence VHH binding by modifying the structure of CDRs or by involving some amino acids of framework (FR) in interacting with the antigen.

### 3.3. Obtaining VHHs with VH characteristics

The gene segment families were identified by a search for similarities in IMGT. The nucleotide sequence of VHHs showed a 90% sequence similarity with a single V gene referred to as IGHV3S31 (accession number AM939730 [10]) which is classified as a VH gene [10] The junction segment JH of VHH corresponded to IGHJ4 genetic element [29]. No D gene was found according to IMGT analysis.

Obtaining VH from immune VHH libraries was unexpected, but some studies demonstrated that a minority (5-10%) of VHH originates from VH germline genes, which have been identified together with canonical VHH in immune libraries [7,30]. In FR2 regions, VH possess the conserved Val37, Gly44, Leu45 and Trp47, which are clustered in space and these VH amino acid hallmarks form a hydrophobic bond with the VL [31,32]. In VHH, these amino acids are often substituted (Val37Phe or Val37Tyr, Gly44Glu, Leu45Arg and Trp47Gly) [33]. We found for all anti-GFAP VHHs Gly44 and Trp47 which are VH conserved amino acids. At positions 37 and 45, instead of a valine and a leucine we respectively found a leucine and an isoleucine which are closely related amino-acids (Fig. 1). Moreover Trp118 was substituted by an arginine, a feature usually observed when conventional VH3 genes recombine with a D-JH and are expressed as homodimeric IgG [34,35].

## 4. Discussion

Similar VHHs directed against GFAP were isolated with two different selection methods and from two different animals immunized with two different antigenic preparations based on GFAP-containing human brain extract vs purified GFAP (Fig. 2)

We can exclude possible contamination between the two immune libraries, first because experiments were not performed simultaneously. The selection of H8 by phage display is recent while the selection of VHH E9 by ribosome display with the other immune library was made previously [8]. Also the selection of the two antibodies was performed using a completely distinct process with no common reagents or common steps.

Using an immune library is an important factor for successful selection and retrieval of high affinity antibodies [15]. Following the immunization with an antigen, the specific B cells will proliferate and undergo affinity maturation for the antigen. Mature immunoglobulins (Igs) result from a maturation process in which multiple recombinations and mutations occur. It is estimated that in humans the repertoire of Igs expressed by naive B cells could contain as many as  $10^{11}$  different Igs. Moreover, somatic hypermutation brings in point mutations into the rearranged V-region genes of activated B cells, generating further diversity that can be selected by its enhanced antigen binding properties [36]. As camelids share similar VDJ recombination process with humans during B cell ontogeny[10], we could expect comparable diversity for homodimeric camelid IgGs. Among all variants generated during this maturation, only the best ones are selected. Despite the wide variety possibilities it is surprising that closely related VHHs could be selected. Pellis M *et al*, 2012 [15] succeeded to select similar HIV-I integrase –specific VHHs by using concurrently bacterial-two-hybrid selection system (BH VHHs) and conventional phage display panning (PD VHHs) but selections were performed using a unique immune library. The comparison between 13 BH VHHs sequences and 12 PD VHHs sequences reveals

that 5 of BH VHHs are extremely similar to PD VHHs, some VHHs obtained from these two different selection methods have the same CDR3. Even more, one BH VHH and one PD VHH share an exactly identical sequence.

In our case it is astonishing that all six VH/VHHs share almost the same FRs and CDRs with only a few amino-acid modifications, that demonstrates only one *vh/vhh* gene was selected and the affinity maturation of these VH/VHHs go through almost an identical process. So the recovery of closely related VHHs from 2 different libraries derived from 2 animals with 2 selection techniques, at least in our case could not be just a coincidence. It emphasizes the existence of an immunodominant epitope within GFAP, which could be recognized by only a very limited number of VH/VHH possibilities.

## Acknowledgments

We thank the GIE Neuro-CEB of the hospital Pitié-Salpêtrière for providing human brain tissue. We would like to thank Yohann Dickx for his technical help. We thank Patrick England for the final proofreading of the manuscript. We gratefully acknowledge sequence analysis from IMGT (the International ImMunoGeneTics information), Montpellier, France. The immunohistochemistry of this work was carried out on the HISTOMICS platform of the ICM and we sincerely acknowledge all staff involved.

## Potential conflict of interest

No potential conflicts of interest were disclosed.

## Authorship

TL and PL conceived and designed the research, analyzed data, interpreted results of experiments, prepared the figures, drafted the manuscript and approved the final version of the manuscript; TL performed experiments; TL, MV, SB, MD, BD and PL edited and revised manuscript.

## References

- [1] C. Hamers-Casterman, T. Atarhouch, S. Muyldermans, G. Robinson, C. Hamers, E.B. Songa, N. Bendahman, R. Hamers, Naturally occurring antibodies devoid of light chains., *Nature*. 363 (1993) 446–8. doi:10.1038/363446a0.
- [2] T. Li, J.-P. Bourgeois, S. Celli, F. Glacial, A.-M. Le Sourd, S. Mecheri, B. Weksler, I. Romero, P.-O. Couraud, F. Rougeon, P. Lafaye, Cell-penetrating anti-GFAP VHH and corresponding fluorescent fusion protein VHH-GFP spontaneously cross the blood-brain barrier and specifically recognize astrocytes: application to brain imaging., *FASEB J.* 26 (2012) 3969–79. doi:10.1096/fj.11-201384.
- [3] S. Muyldermans, Nanobodies: natural single-domain antibodies., *Annu. Rev. Biochem.* 82 (2013) 775–97. doi:10.1146/annurev-biochem-063011-092449.
- [4] A. Olichon, T. Surrey, Selection of genetically encoded fluorescent single domain antibodies engineered for efficient expression in *Escherichia coli.*, *J. Biol. Chem.* 282 (2007) 36314–20. doi:10.1074/jbc.M704908200.
- [5] M. Arbabi Ghahroudi, A. Desmyter, L. Wyns, R. Hamers, S. Muyldermans, Selection and identification of single domain antibody fragments from camel heavy-chain antibodies., *FEBS Lett.* 414 (1997) 521–6. doi:10.1016/S0014-5793(97)01062-4.
- [6] S. a Jobling, C. Jarman, M.-M. Teh, N. Holmberg, C. Blake, M.E. Verhoeyen, Immunomodulation of enzyme function in plants by single-domain antibody fragments., *Nat. Biotechnol.* 21 (2003) 77–80. doi:10.1038/nbt772.
- [7] J. Tanha, G. Dubuc, T. Hiram, S. a Narang, C.R. MacKenzie, Selection by phage display of llama conventional V(H) fragments with heavy chain antibody V(H)H properties., *J. Immunol. Methods.* 263 (2002) 97–109. doi.org/10.1016/S0022-1759(02)00027-3.
- [8] C. Perruchini, F. Pecorari, J.-P. Bourgeois, C. Duyckaerts, F. Rougeon, P. Lafaye, Llama VHH antibody fragments against GFAP: better diffusion in fixed tissues than classical monoclonal antibodies., *Acta Neuropathol.* 118 (2009) 685–95. doi:10.1007/s00401-009-0572-6.
- [9] T. Li, M. Vandesquille, F. Koukouli, C. Dudeffant, I. Youssef, P. Lenormand, C. Ganneau, U. Maskos, C. Czech, F. Grueninger, C. Duyckaerts, M. Dhenain, S. Bay, B. Delatour, P. Lafaye,

- Camelid single-domain antibodies: A versatile tool for in vivo imaging of extracellular and intracellular brain targets., *J. Control. Release.* 243 (2016) 1–10.  
doi:10.1016/j.jconrel.2016.09.019.
- [10] I. Achour, P. Cavelier, M. Tichit, C. Bouchier, P. Lafaye, F. Rougeon, Tetrameric and homodimeric camelid IgGs originate from the same IgH locus., *J. Immunol.* 181 (2008) 2001–9. doi.org/10.4049/jimmunol.181.3.2001.
- [11] J.-L. Jestin, P. Lafaye, Parallel Processing of Complex Biomolecular Information: Combining Experimental and Computational Approaches, in: *Syst. Comput. Biol. - Bioinforma. Comput. Model.*, InTech, 2011: pp. 1–22. doi:10.5772/22506.
- [12] P. Dufner, L. Jeremutis, R.R. Minter, Harnessing phage and ribosome display for antibody optimisation., *Trends Biotechnol.* 24 (2006) 523–9. doi:10.1016/j.tibtech.2006.09.004.
- [13] G.P. Smith, Filamentous fusion phage: novel expression vectors that display cloned antigens on the virion surface., *Science.* 228 (1985) 1315–7. doi: 10.1126/science.4001944.
- [14] J. McCafferty, A.D. Griffiths, G. Winter, D.J. Chiswell, Phage antibodies: filamentous phage displaying antibody variable domains., *Nature.* 348 (1990) 552–4. doi:10.1038/348552a0.
- [15] M. Pellis, E. Pardon, K. Zolghadr, U. Rothbauer, C. Vincke, J. Kinne, I. Dierynck, K. Hertogs, H. Leonhardt, J. Messens, S. Muyldermans, K. Conrath, A bacterial-two-hybrid selection system for one-step isolation of intracellularly functional Nanobodies., *Arch. Biochem. Biophys.* 526 (2012) 114–23. doi:10.1016/j.abb.2012.04.023.
- [16] B. Liu, F. Conrad, M.R. Cooperberg, D.B. Kirpotin, J.D. Marks, Mapping tumor epitope space by direct selection of single-chain Fv antibody libraries on prostate cancer cells., *Cancer Res.* 64 (2004) 704–10. doi:10.1158/0008-5472.CAN-03-2732.
- [17] J. Tordsson, L. Abrahmsén, T. Kalland, C. Ljung, C. Ingvar, T. Brodin, Efficient selection of scFv antibody phage by adsorption to in situ expressed antigens in tissue sections., *J. Immunol. Methods.* 210 (1997) 11–23. doi.org/10.1016/S0022-1759(97)00165-8.
- [18] R. Pasqualini, E. Ruoslahti, Organ targeting in vivo using phage display peptide libraries., *Nature.* 380 (1996) 364–6. doi:10.1038/380364a0.
- [19] J. Hanes, A. Plückthun, In vitro selection and evolution of functional proteins by using ribosome display., *Proc. Natl. Acad. Sci. U. S. A.* 94 (1997) 4937–42.



- <https://www.ncbi.nlm.nih.gov/pubmed/9144168>.
- [20] J. Hanes, L. Jermutus, S. Weber-Bornhauser, H.R. Bosshard, A. Plückthun, Ribosome display efficiently selects and evolves high-affinity antibodies in vitro from immune libraries., *Proc. Natl. Acad. Sci. U. S. A.* 95 (1998) 14130–5. doi:10.1073/pnas.95.24.14130.
- [21] J. Hanes, C. Schaffitzel, A. Knappik, A. Plückthun, Picomolar affinity antibodies from a fully synthetic naive library selected and evolved by ribosome display., *Nat. Biotechnol.* 18 (2000) 1287–92. doi:10.1038/82407.
- [22] M. Mercken, M. Vandermeeren, U. Lübke, J. Six, J. Boons, A. Van de Voorde, J.J. Martin, J. Gheuens, Monoclonal antibodies with selective specificity for Alzheimer Tau are directed against phosphatase-sensitive epitopes., *Acta Neuropathol.* 84 (1992) 265–72. <http://www.ncbi.nlm.nih.gov/pubmed/1384266>.
- [23] P. Lafaye, I. Achour, P. England, C. Duyckaerts, F. Rougeon, Single-domain antibodies recognize selectively small oligomeric forms of amyloid beta, prevent Abeta-induced neurotoxicity and inhibit fibril formation., *Mol. Immunol.* 46 (2009) 695–704. doi:10.1016/j.molimm.2008.09.008.
- [24] P. Lafaye, F. Nato, J.C. Mazié, N. Doyen, Similar binding properties for a neutralizing anti-tetanus toxoid human monoclonal antibody and its bacterially expressed Fab., *Res. Immunol.* 146 (1996) 373–82. <http://www.ncbi.nlm.nih.gov/pubmed/8739329>.
- [25] B. Friguet, A.F. Chaffotte, L. Djavadi-Ohanian, M.E. Goldberg, Measurements of the true affinity constant in solution of antigen-antibody complexes by enzyme-linked immunosorbent assay., *J. Immunol. Methods.* 77 (1985) 305–19. doi:10.1016/0022-1759(85)90044-4.
- [26] M.A. Korolainen, S. Auriola, T.A. Nyman, I. Alafuzoff, T. Pirttilä, Proteomic analysis of glial fibrillary acidic protein in Alzheimer's disease and aging brain., *Neurobiol. Dis.* 20 (2005) 858–70. doi:10.1016/j.nbd.2005.05.021.
- [27] K. Eun, S.-U. Hwang, H.-M. Jeon, S.-H. Hyun, H. Kim, Comparative Analysis of Human, Mouse, and Pig Glial Fibrillary Acidic Protein Gene Structures., *Anim. Biotechnol.* 27 (2016) 126–32. doi:10.1080/10495398.2015.1126719.
- [28] a Desmyter, T.R. Transue, M. a Ghahroudi, M.H. Thi, F. Poortmans, R. Hamers, S. Muyldermans, L. Wyns, Crystal structure of a camel single-domain VH antibody fragment

- in complex with lysozyme., *Nat. Struct. Biol.* 3 (1996) 803–11.  
<http://www.ncbi.nlm.nih.gov/pubmed/8784355>.
- [29] V.K. Nguyen, S. Muyldermans, R. Hamers, The specific variable domain of camel heavy-chain antibodies is encoded in the germline., *J. Mol. Biol.* 275 (1998) 413–8.  
[doi:10.1006/jmbi.1997.1477](https://doi.org/10.1006/jmbi.1997.1477).
- [30] A. Monegal, A. Olichon, N. Bery, T. Filleron, G. Favre, A. de Marco, Single domain antibodies with VH hallmarks are positively selected during panning of llama (*Lama glama*) naïve libraries., *Dev. Comp. Immunol.* 36 (2012) 150–6. [doi:10.1016/j.dci.2011.06.016](https://doi.org/10.1016/j.dci.2011.06.016).
- [31] S. Muyldermans, C. Cambillau, L. Wyns, Recognition of antigens by single-domain antibody fragments: the superfluous luxury of paired domains., *Trends Biochem. Sci.* 26 (2001) 230–5. [dx.doi.org/10.1016/S0968-0004\(01\)01790-X](https://doi.org/10.1016/S0968-0004(01)01790-X).
- [32] K.B. Vu, M.A. Ghahroudi, L. Wyns, S. Muyldermans, Comparison of llama VH sequences from conventional and heavy chain antibodies., *Mol. Immunol.* 34 (1997) 1121–31.  
[doi:10.1016/S0161-5890\(97\)00146-6](https://doi.org/10.1016/S0161-5890(97)00146-6).
- [33] S. Muyldermans, T. Atarhouch, J. Saldanha, J. a Barbosa, R. Hamers, Sequence and structure of VH domain from naturally occurring camel heavy chain immunoglobulins lacking light chains., *Protein Eng.* 7 (1994) 1129–35.  
<http://www.ncbi.nlm.nih.gov/pubmed/7831284>.
- [34] M.M. Harmsen, R.C. Ruuls, I.J. Nijman, T. a Niewold, L.G. Frenken, B. de Geus, Llama heavy-chain V regions consist of at least four distinct subfamilies revealing novel sequence features., *Mol. Immunol.* 37 (2000) 579–90. [doi.org/10.1016/S0161-5890\(00\)00081-X](https://doi.org/10.1016/S0161-5890(00)00081-X).
- [35] D. Saerens, J. Kinne, E. Bosmans, U. Wernery, S. Muyldermans, K. Conrath, Single domain antibodies derived from dromedary lymph node and peripheral blood lymphocytes sensing conformational variants of prostate-specific antigen., *J. Biol. Chem.* 279 (2004) 51965–72. [doi:10.1074/jbc.M409292200](https://doi.org/10.1074/jbc.M409292200).
- [36] C.A.J. Janeway, P. Travers, M. Walport, *The generation of diversity in immunoglobulins* Virtually, Garland Science, New York, 2001.  
<https://www.ncbi.nlm.nih.gov/books/NBK27140>.

## Figure legends

		-----FR1-IMGT-----		CDR1	-----FR2-IMGT-----	CDR2			
		10	20	30	40	50			
	A12	EVQLQASGGGLVQPGGSLRLGCTVEGGLDVIINNNMNYRQAPCHARELVATIIGGPEINVASVVG					60		
	G110	DVQLQASGGGLVQAGGSLRLGCAAGGLAALNSYAVNFRQAPCKEREVVAIIGSGGPTTYADVVG							
	CE7	EVQLQASGGGLVQAGGSLRLGCAAGGRTFRTYVWFRQAPCKEREVVAIIGSGGPTTYADVVG							
	C7C7	EVQLRAGGGGVQPGGSLRFQCVAGGSLINIRDNHWYRQAPCKEREVVAIIPVTEGGRTYADVVG							
	B70	EVQLQASGGGLVQPGGSLRLGCGGGGTTSDTYAFALRQAPCKEREVVAIIGSGGPTTYADVVG							
anti-GFAP VHhs	B7	EVQLQASGGGLVQPGGSLRLGCAAGGPTFSYAMTWLRQAPCKEINVSRIQPGGSEYADVVG							
	G11	---E---V---S---Q-----							
	H8/E9	---Y---S---Q-----							
	E3	---V---S---Q-----							
	A10	---RV---Q-----							
		-----FR3-IMGT-----		CDR3	-----FR4-IMGT-----				
		70	80	90	100	118			
	A12	RFTIGRDNAEKAVYLGQNSLEFPEDTADYICVHLIRLGAARAYDY				WGQCQVTVSS			
	G110	RFTIGRDNAQGVYLGQNSLEFPEDTAVYICAAALGDRGNGIDITY				WGQCQVTVSS			
	CE7	RFTIGRDNAENVYLGQNSLEFPEDTAVYICAAAGCTTYGNSYAFY				WGQCQVTVSS			
	C7C7	RFTIGRDNAENVYLGQNSLEFPEDTAVYICTAALIDNGCEDY				WGQCQVTVSS			
	B70	RLTIGRDNAENVYLGQNSLEFPEDTAVYICAAENVYFGSRNCGWEKADFCGNGCQVTVSS				WGQCQVTVSS			
anti-GFAP VHhs	B7	RFTIGRDNAENVYLGQNSLEFPADTAVYICAIYQCGCG				WGQCQVTVSS			
	G11	-----E-----				-----			
	H8/E9	-----E-----				-----			
	E3	-----E---A-----				-----			
	A10	-----E---A-----				-----			

Phage  
displayRibosome  
DisplayPhage  
displayRibosome  
Display

**Fig. 1. Sequence of anti-GFAP VHs obtained by concurrent phage/ribosome display methods.** Dotted lines indicate identical sequences. CDRs were determined according to IMGT. \* indicated VH hallmarks present in FR2.

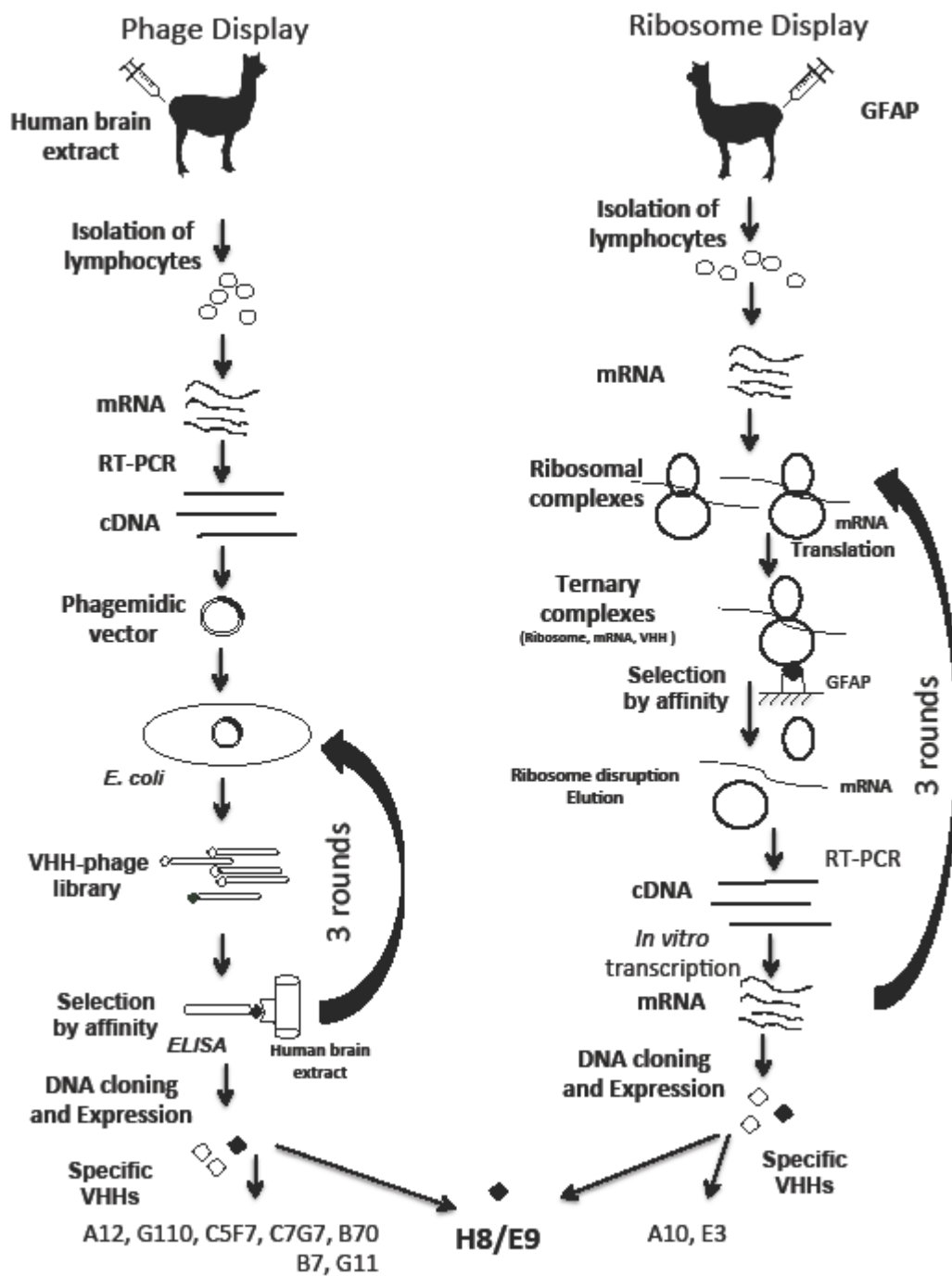
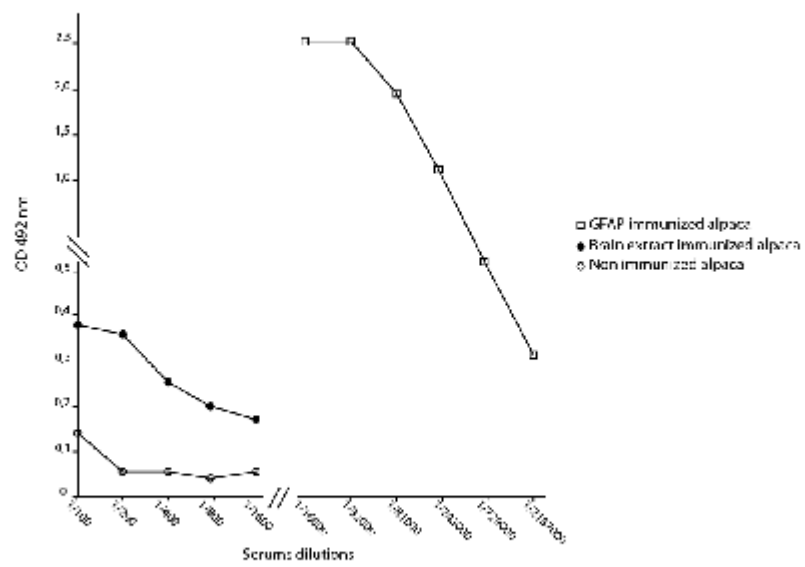
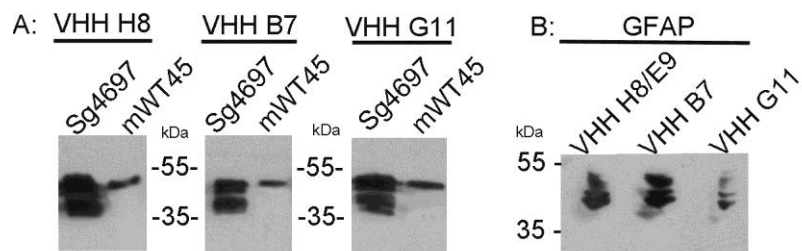


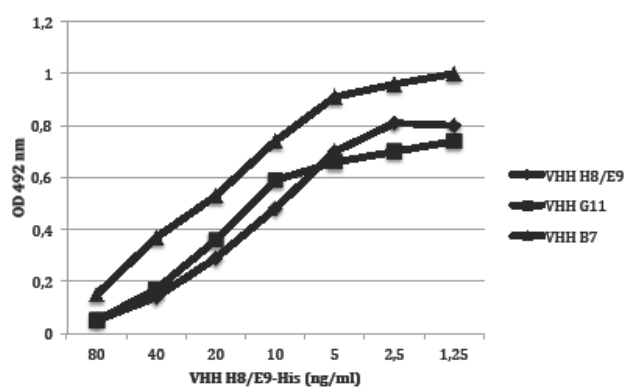
Fig. 2. Overview of the selection of the GFAP specific VHHs by phage display and ribosome display.



**Fig. 3. Polyclonal serum titration on GFAP.**

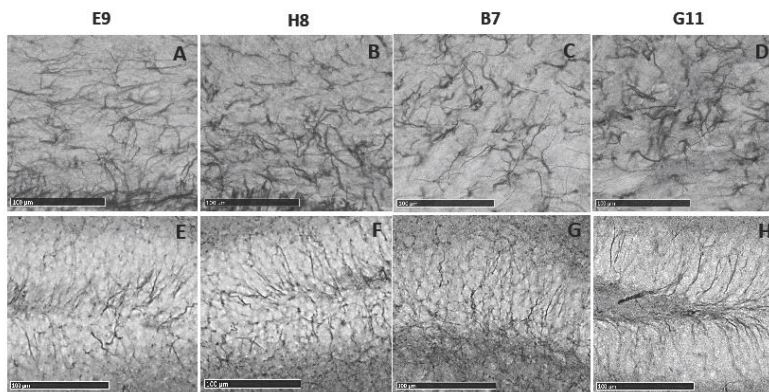


**Fig. 4. Western Blot analysis of recombinant VHHs H8/E9, B7 and G11 A:) on human (Sg 4697) and mouse (mWT45) brain extracts, and B:) on purified GFAP.**



**Fig. 5. Competition for binding to GFAP between the different VHHs.**

Polystyrene plates were coated with GFAP. His tagged VHH E8/H9 at different concentrations was added, followed by strep-tagged VHH H8/E9, B7, and G11 and revealed by an anti-strep tag mAb.



**Fig. 6. Immunolabeling of astrocytes by VHHs on mouse brain sections.**

Immunostaining with E9 (obtained by ribosome-display) and with H8, B7, G11 (obtained by phage-display). (A, B, C & D) Protoplasmic astrocytes with short ramifications. (E, F, G & H) Fibrous astrocytes with thin and long processes.



**Table 1. Affinity of VHHs determined by ELISA using GFAP as target antigen.**

VHHs	Affinity (nM)
B7	0.71
G11	4.6
H8/E9	5.6
E3	> $\mu\text{M}$
A10	3.1