



HAL
open science

The molecular mechanism of bacterial lipoprotein modification—how, when and why?

Nienke Buddelmeijer

► **To cite this version:**

Nienke Buddelmeijer. The molecular mechanism of bacterial lipoprotein modification—how, when and why?. *FEMS Microbiology Reviews*, 2015, 39 (2), pp.246-61. 10.1093/femsre/fuu006 . pasteur-01407690

HAL Id: pasteur-01407690

<https://pasteur.hal.science/pasteur-01407690v1>

Submitted on 2 Dec 2016

HAL is a multi-disciplinary open access archive for the deposit and dissemination of scientific research documents, whether they are published or not. The documents may come from teaching and research institutions in France or abroad, or from public or private research centers.

L'archive ouverte pluridisciplinaire **HAL**, est destinée au dépôt et à la diffusion de documents scientifiques de niveau recherche, publiés ou non, émanant des établissements d'enseignement et de recherche français ou étrangers, des laboratoires publics ou privés.



Distributed under a Creative Commons Attribution - NonCommercial - NoDerivatives 4.0 International License

<http://mc.manuscriptcentral.com/fems>

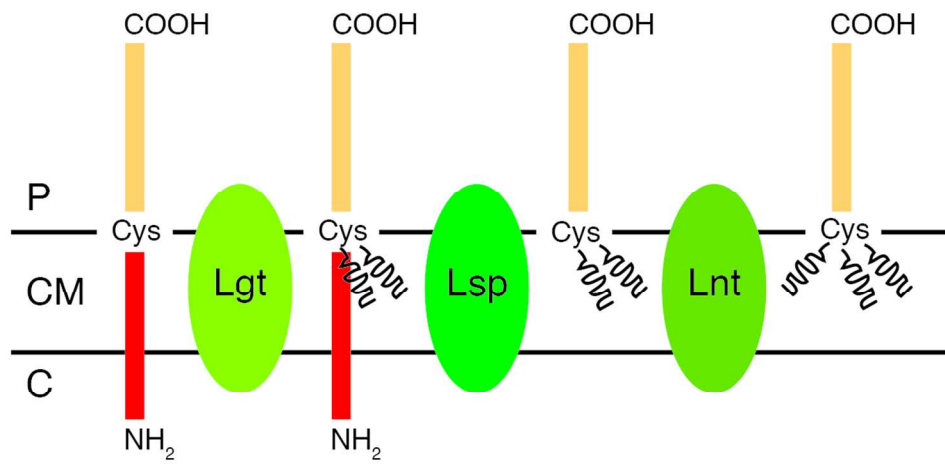
**The molecular mechanism of bacterial lipoprotein
modification - how, when and why?**

Journal:	<i>FEMS Microbiology Reviews</i>
Manuscript ID:	FEMSRE-14-10-0036.R2
Manuscript Type:	Review Article
Date Submitted by the Author:	n/a
Complete List of Authors:	Buddelmeijer, Nienke; Institut Pasteur, Microbiology
Keywords:	lipoprotein, fatty acid acylation, bacteria, acyltransferase, signal peptidase

SCHOLARONE™
Manuscripts

Review

1
2
3
4
5
6
7
8
9
10
11
12
13
14
15
16
17
18
19
20
21
22
23
24
25
26
27
28
29
30
31
32
33
34
35
36
37
38
39
40
41
42
43
44
45
46
47
48
49
50
51
52
53
54
55
56
57
58
59
60



109x55mm (300 x 300 DPI)

Peer Review

1
2
3 1 The molecular mechanism of bacterial lipoprotein modification – how, when and why?
4
5
6
7
8
9
10
11
12
13
14
15
16
17
18
19
20
21
22
23
24
25
26
27
28
29
30
31
32
33
34
35
36
37
38
39
40
41
42
43
44
45
46
47
48
49
50
51
52
53
54
55
56
57
58
59
60

2

3 Nienke Buddelmeijer

4

5 Institut Pasteur, Biology and Genetics of the Bacterial Cell Wall Unit, Inserm Group Avenir,
6 28 rue du docteur Roux, Paris F-75724 cedex 15, France

7

8 *Abstract*

9 Posttranslational modification of proteins by lipidation is a common process in biological
10 systems. Lipids provide protein stability, interaction with other membrane components, and in
11 some cases, due to reversibility of the process, a mechanism for regulating protein
12 localization and function. Bacterial lipoproteins possess fatty acids at their amino-termini that
13 are derived from phospholipids and this lipid moiety anchors the proteins into the membrane.
14 These lipids, as is the case for lipopolysaccharides and lipoteichoic acids, play an important
15 role in signaling of the innate immune system through the interaction with Toll-like receptors.
16 Over the past three years tremendous progress has been made in understanding the
17 mechanism by which lipoproteins become lipidated. Advanced methodology in mass
18 spectrometry, proteomics and genome-wide analyses allowed precise characterization of
19 lipoprotein modifications and the identification of the enzymes catalyzing the reactions in
20 diverse bacterial species. This review will highlight new findings on bacterial lipoprotein
21 modification with focus on the reaction mechanisms and the role of lipoproteins in cell
22 envelope homeostasis.

23

24 *Introduction*

1
2
3 25 Bacterial lipoproteins are exported proteins and often exposed on the bacterial cell surface
4
5 26 and include an important class of virulence factors expressed by many pathogenic species
6
7 27 (Kovacs-Simon *et al.*, 2010). Prolipoprotein is synthesized in the cytoplasm and translocated
8
9 28 via Sec or Tat secretion machineries (Inouye *et al.*, 1977, Hayashi & Wu, 1985, Gibbons *et*
10
11 29 *al.*, 2007, Siboo *et al.*, 2008, Shruthi *et al.*, 2010, Thompson *et al.*, 2010). Lipoprotein
12
13 30 modification occurs in the cytoplasmic (inner) membrane by the sequential action of three
14
15 31 membrane-bound enzymes (Fig. 1) (Wu *et al.*, 1982). Lipoproteins possess a conserved
16
17 32 sequence, so-called lipobox, which allows specific recognition by the modification
18
19 33 machinery. The invariant cysteine residue in the lipobox becomes lipidated and the first
20
21 34 amino acid after complete maturation of lipoprotein. Phosphatidylglycerol:prolipoprotein
22
23 35 diacylglyceryl transferase (Lgt) adds an *sn*-1,2-diacylglyceryl group from
24
25 36 phosphatidylglycerol (PG) to the sulfhydryl group of cysteine via a thioether bond.
26
27 37 Prolipoprotein signal peptidase (Lsp) cleaves the signal peptide thereby liberating the α -
28
29 38 amino group of diacylglyceryl-cysteine. The third and last step is *N*-acylation of
30
31 39 diacylglyceride-cysteine by Apolipoprotein *N*-acyltransferase (Lnt), resulting in mature *N*-
32
33 40 acyl-*S*-diacylglyceryl-cysteine linked proteins. Lgt and Lsp are conserved in all bacterial
34
35 41 species, while Lnt has only been identified in proteobacteria and actinomycetes. Recent
36
37 42 findings suggest that a non-canonical lipidation pathway exist by the demonstration that
38
39 43 lipoproteins of firmicutes and terenicutes (that include mollicutes), whose genome lack a gene
40
41 44 encoding Lnt, exist in a triacylated form (Fig. 1) (Jan *et al.*, 1995, Kurokawa, 2009, Asanuma
42
43 45 *et al.*, 2010, Serebryakova *et al.*, 2011). Various *N*-terminal modifications were observed: *N*-
44
45 46 acyl-*S*-diacylglyceryl-cysteine, but also *N*-acyl-*S*-monoacyl-cysteine, *N*-acetyl-*S*-
46
47 47 diacylglyceryl-cysteine and *N*-peptidyl-*S*-diacylglyceryl-cysteine (Nakayama *et al.*, 2012).
48
49 48 Correct lipoprotein modification and consequently, the enzymes that carry them out, are
50
51 49 involved in a process essential for bacterial viability in proteobacteria and some
52
53 50
54
55
56
57
58
59
60

1
2
3 50 actinomycetes (Table 1). Understanding the molecular details of their catalytic mechanism
4
5 51 and function should provide detailed knowledge on bacterial envelope homeostasis and
6
7 52 facilitate the discovery of new antibacterial agents targeting this essential pathway. Most
8
9 53 enzymatic and functional studies have been performed with the lipoprotein modification
10
11 54 enzymes of *Escherichia coli* that are discussed in this review. It is stated in the text when
12
13 55 enzymes from other bacterial species are described.
14
15
16
17
18

19 57 *Phospholipids are substrates for acyltransferases involved in lipoprotein modification*

20
21 58 The lipid moiety of lipoproteins is derived from membrane phospholipids, linking the
22
23 59 lipoprotein modification pathway to phospholipid biogenesis (Lai *et al.*, 1980). Two different
24
25 60 systems exist in bacteria to transfer fatty acids from acyl-acyl carrier proteins (acyl-ACP), the
26
27 61 end products of the fatty acid synthase II pathway (FASII), to glycerol-3-phosphate. The
28
29 62 PlsX/Y/C is a widespread pathway while the PlsB/C system is found predominantly in γ -
30
31 63 proteobacteria, but both systems result in the synthesis of phosphatidic acid, the building
32
33 64 block of phospholipids. Phosphatidic acid is subsequently converted into the key intermediate
34
35 65 CDP-diacylglycerol. Two pathways then lead to the synthesis of phosphatidylethanolamine
36
37 66 (PE) (via phosphatidylserine) and phosphatidylglycerol (PG) and cardiolipin (CL), respectively
38
39 67 (for a recent review see (Parsons & Rock, 2013)). Movement of lipids, including PE and
40
41 68 lipopolysaccharides (LPS), across the cytoplasmic membrane is dependent on MsbA (Zhou *et*
42
43 69 *al.*, 1998, Doerrler & Raetz, 2002). The ABC transporter MsbA functions as a dimer in which
44
45 70 each monomer is composed of six transmembrane segments (TMS) and a nucleotide-binding
46
47 71 domain (Ward *et al.*, 2007). The dimer hydrolyses ATP and then undergoes large
48
49 72 conformational changes, which is thought to lead to the trans-bilayer movement of lipids
50
51 73 across the membrane (Doerrler *et al.*, 2001, Doerrler *et al.*, 2004, Doshi & van Veen, 2013).
52
53 74 The main phospholipids of *E. coli* and *Salmonella enterica* serovar *Thyphimurium* are
54
55
56
57
58
59
60

1
2
3 75 phosphatidylethanolamine (PE), phosphatidylglycerol (PG), cardiolipin (CL) and minor
4
5 76 phospholipids phosphatidylserine (PS) and phosphatidic acid (PA) (Ames, 1968). The fatty
6
7 77 acids of phospholipids of a typical *E. coli* strain contain about 45% palmitic acid (C16:0), 2%
8
9 78 myristic acid (C14:0), 35% palmitoleic acid (C16:1) and 18% *cis*-vaccenic acid (C18:1*cis*-11)
10
11 79 (Cronan & Rock, 1996). The main fatty acids of major lipoprotein Lpp (murein-lipoprotein or
12
13 Braun's lipoprotein) of *E. coli* are palmitic acid (53%), *cis*-vaccenic acid (20.7%), 9,10-
14
15 80 methylene-hexadecanoic acid (C17:0) (10.6%) and palmitoleic acid (9.4%) (Hantke & Braun,
16
17 81 1973), corresponding to the fatty acid moieties of phospholipids. Phospholipids that compose
18
19 82 membranes of *Staphylococcus aureus* include phosphatidylglycerol, cardiolipin, lysyl-
20
21 83 phosphatidylglycerol, and mono- and diglucosyl-diglyceride but not
22
23 84 phosphatidylethanolamine (White & Frerman, 1968, Fischer, 1994). Mass spectrometry data
24
25 85 has shown that lipoproteins in *S. aureus* are modified with C17:0 to C20:0 at the *sn*-1 position
26
27 86 of the diacylglyceryl group and with C15:0 at the *sn*-2 position. The α -amino group of
28
29 87 lipidated diacylglyceryl-cysteine have fatty acids of varying lengths, from C15:0 to C20:0
30
31 88 (Kurokawa *et al.*, 2012). The lipid moiety of lipoproteins thus reflects the fatty acid
32
33 89 composition of phospholipids and varies among bacterial species.
34
35 90
36
37
38
39
40
41
42

92 *Phosphatidylglycerol:prolipoprotein diacylglyceryl transferase (Lgt)*

43 Modification of prolipoprotein by Lgt is the first step in lipoprotein modification (Tokunaga
44
45 94 *et al.*, 1982). Upon membrane insertion of prolipoprotein by Sec or Tat, Lgt transfers the
46
47 95 diacylglyceryl group from phosphatidylglycerol onto the sulfhydryl group of the invariant
48
49 96 cysteine in the lipobox resulting in a thioether-linked diacylglyceryl-prolipoprotein and a *sn*-
50
51 97 glycerol-1-phosphate by-product (Lai *et al.*, 1980, Sankaran & Wu, 1994). Signal sequences
52
53 98 of lipoproteins share common features including one or several positively charged residues at
54
55 99 the amino terminus followed by a hydrophobic stretch of about 20 amino acids that includes
56
57
58
59
60

1
2
3 100 the lipobox. Based on studies with Lpp, the consensus sequence of the lipobox was
4
5 101 determined as: (L)₋₃-(A/S)₋₂-(G/A)₋₁-C₊₁, in which the lipid-modified cysteine at position +1
6
7 102 becomes the first amino acid in the mature protein (Wu *et al.*, 1983, Wu, 1996, Madan Babu
8
9 103 & Sankaran, 2002, Babu *et al.*, 2006). This consensus sequence has been documented in the
10
11 104 PROSITE database under pattern entry PS00013/PDOC00013
12
13 105 (<http://www.expasy.ch/prosite/>). Lipobox motifs are similar in firmicutes but more variable in
14
15 106 spirochetes (Haake, 2000, Sutcliffe & Harrington, 2002), the -3 position in particular is more
16
17 107 loosely defined in the latter, where a leucine residue is often replaced by another hydrophobic
18
19 108 amino acid. A high percentage of ORFs in spirochetes encode lipoproteins, some of which are
20
21 109 highly abundant proteins (Haake, 2000). For Lpp it has also been demonstrated that residue
22
23 110 G14 in the signal peptide sequence is important for lipidation by Lgt, and that a signal
24
25 111 sequence shortened by several residues still leads to modified protein (Wu *et al.*, 1977, Yem
26
27 112 & Wu, 1977, Lin *et al.*, 1978, Lin *et al.*, 1980, Inouye *et al.*, 1984, Pollitt *et al.*, 1985). The
28
29 113 first biochemical characterization of Lgt was reported in the 1980-s using crude membrane
30
31 114 extracts. The optimal pH and reaction temperature for Lgt are pH 7.8 and 37°C, respectively
32
33 115 (Tokunaga *et al.*, 1984). Lgt is stable in membrane vesicles up to 65°C, the enzyme is active
34
35 116 in N-octyl-β-D-glucoside but many other detergents are not compatible with enzyme activity
36
37 117 (Tokunaga *et al.*, 1984, Sankaran & Wu, 1994). PG is specific as acyl donor since PE and CL
38
39 118 could not be used as substrate in the *in vitro* assay using a synthetic peptide, suggesting that
40
41 119 the polar headgroup of the phospholipid plays an important role in the Lgt reaction (Sankaran
42
43 120 & Wu, 1994). The gene encoding Lgt was identified by screening a collection of temperature
44
45 121 sensitive mutants of *S. enterica* for the accumulation of unmodified Lpp and was shown to be
46
47 122 located at the 5' end of *thyA* (Williams *et al.*, 1989, Bell-Pedersen *et al.*, 1991, Gan *et al.*,
48
49 123 1993). The enzyme is localized in the cytoplasmic membrane and spans the membrane by
50
51 124 seven transmembrane segments (Fig. 2.) (Pailler *et al.*, 2012). The majority of essential
52
53
54
55
56
57
58
59
60

1
2
3 125 residues are located in the membrane, however, it is currently unknown how Lgt interacts
4
5 126 with its substrates PG and prolipoprotein (Qi *et al.*, 1995, Sankaran *et al.*, 1997, Pailler *et al.*,
6
7 127 2012). Residues H103 and Y235 were identified as conserved by comparing four Lgt
8
9 128 sequences and were shown to be essential for Lgt activity (Sankaran *et al.*, 1997). These
10
11 129 residues are among twelve residues highly conserved in proteobacteria, firmicutes and
12
13 130 actinobacteria (Pailler *et al.*, 2012). A more recent analysis on conserved residues highlighted
14
15 131 the existence of a so-called Lgt signature motif; two amino acids in this sequence (N146 and
16
17 132 G154) were shown to be absolutely required for function (Pailler *et al.*, 2012). Together, these
18
19 133 data show that regions H103-G108 and G142-G154 and residues Y26 and Y235 are critical
20
21 134 for Lgt function. Initial kinetics studies were performed with crude membrane extracts but
22
23 135 further biochemical characterization of the *E. coli* enzyme turned out difficult due to
24
25 136 overproduction defects and instability of the purified enzyme (Sankaran *et al.*, 1997, Selvan
26
27 137 & Sankaran, 2008, Pailler *et al.*, 2012). Lgt has been purified recently from *Lactococcus*
28
29 138 *lactis* with which kinetic studies were performed (Banerjee & Sankaran, 2012), unfortunately,
30
31 139 assay conditions were not comparable with those described previously (Sankaran *et al.*, 1997,
32
33 140 Sundaram *et al.*, 2012), making it difficult to compare enzyme activities from different
34
35 141 bacterial species.
36
37 142 Lgt of *S. aureus* can complement a temperature sensitive mutant of *E. coli*, suggesting that
38
39 143 Lgt is functionally conserved among bacterial species (Qi *et al.*, 1995). Deletion mutants of
40
41 144 *lgt* in firmicutes often lead to shedding of lipoproteins into the culture supernatant in non-
42
43 145 lipidated precursor form with uncleaved signal peptide (Leskelä *et al.*, 1999) or processed by
44
45 146 an unidentified signal peptidase (Stoll *et al.*, 2005, Denham *et al.*, 2009) or Lsp (Baumgärtner
46
47 147 *et al.*, 2007, Henneke *et al.*, 2008). Two Lgt homologues were identified in *Streptomyces*
48
49 148 *coelicolor*, Lgt1 and Lgt2, which can both complement the *lgt* mutant of *Streptomyces*
50
51 149 *scabies*, suggesting that both enzymes are functional enzymes (Widdick *et al.*, 2011). A
52
53
54
55
56
57
58
59
60

1
2
3 150 double mutant could not be obtained suggesting that Lgt activity is essential in *S. coelicolor*
4
5 151 (Thompson *et al.*, 2010). Lipoproteins were purified from the complementing strains and the
6
7 152 composition of their N-terminal fatty acid was analyzed by mass spectrometry (Widdick *et*
8
9 153 *al.*, 2011). Several fatty acid acylated peptides were missing in these strains compared to wild
10
11 154 type *S. scabies*, suggesting that subtle differences in diacylglyceryl transferase activity might
12
13 155 exist. The gene encoding Lgt in *Mycobacterium tuberculosis* and two genes in
14
15 156 *Mycobacterium smegmatis* have recently been identified (Tschumi *et al.*, 2012). The
16
17 157 MSMEG_3222 gene was shown to be responsible for the transfer of diacylglyceryl onto
18
19 158 lipoproteins, and although less conserved than MSMEG_3222 the role of the second *lgt* gene
20
21 159 (MSMEG_5408) in lipoprotein modification has not yet been addressed (Tschumi *et al.*,
22
23 160 2012). An *lgt* deletion mutant could not be obtained in *M. tuberculosis* suggesting that this
24
25 161 gene is essential (Sasseti *et al.*, 2003, Tschumi *et al.*, 2012). Strikingly, MSMEG_3222 is not
26
27 162 essential in *M. smegmatis* and deletion did not completely abolish incorporation of radioactive
28
29 163 palmitate suggesting that either MSMEG_5408 or another, as yet unknown, enzyme possesses
30
31 164 Lgt activity but is perhaps less efficient than MSMEG_3222 (Tschumi *et al.*, 2012). Absence
32
33 165 of Lgt resulted in massive release of lipoproteins in the culture media but none of these
34
35 166 proteins contained a signal peptide, suggesting that they are processed by Lsp or other signal
36
37 167 peptidases (Tschumi *et al.*, 2012). No clear phenotype on cell wall biogenesis was observed.
38
39 168 Detailed biochemical analyses and comparison of kinetic parameters of various Lgt enzymes
40
41 169 will contribute to a better understanding of the mechanism of the reaction and are predicted to
42
43 170 highlight differences and similarities in enzyme activity. The thiol group of prolipoprotein
44
45 171 probably performs a nucleophilic attack on the carbonyl group of PG where Lgt provides the
46
47 172 catalytic residues to support transfer of diacylglyceryl onto prolipoprotein, and positions the
48
49 173 two substrates close together. PG is the sole acyl donor in the Lgt reaction, suggesting that the
50
51 174 glycerol-phosphate headgroup plays an important role in substrate recognition by Lgt.
52
53
54
55
56
57
58
59
60

1
2
3 1754
5 176 *Lipoprotein signal peptidase (Lsp)*

6
7 177 Lsp (SPase II) is localized in the cytoplasmic membrane (Tokunaga *et al.*, 1984) and spans
8
9 178 this membrane by four transmembrane segments with both the amino and carboxyl termini
10
11 179 facing the cytoplasm (Munoa *et al.*, 1991) (Fig. 2). Five conserved regions were identified,
12
13 180 i.e. region I (amino acids residues 23-27 in *E. coli* sequence), region II (residues 53-58),
14
15 181 region III (residues 104-115) and region IV (residues 121-123) and region V (residues 137-
16
17 182 141) (Munoa *et al.*, 1991, Tjalsma *et al.*, 1999). The role of these conserved regions in the
18
19 183 peptidase reaction has not yet been addressed but probably plays a role in substrate
20
21 184 recognition and/or binding. The active site of Lsp is composed of at least two aspartate
22
23 185 residues (D114 and D141 in *E. coli*) (Tjalsma *et al.*, 1999). Modification of lipoproteins by
24
25 186 addition of diacylglycerol catalyzed by Lgt is a prerequisite for processing by Lsp in
26
27 187 proteobacteria (Tokunaga *et al.*, 1982). The Lsp enzymes of actinomycetes have an N-
28
29 188 terminal extension, truncations of which led to loss of Lsp function, either due to inactivation
30
31 189 or instability of the enzyme (Thompson *et al.*, 2010). Biochemical studies with Lsp were
32
33 190 performed in the early 1980-s and showed that Lsp is temperature resistant in isolated
34
35 191 membranes, but unlike Lnt still active at 80°C (Hussain *et al.*, 1982). In detergent-solubilized
36
37 192 membranes Lsp is active at a reaction temperature between 37°C-45°C with a pH optimum of
38
39 193 7.9 (Tokunaga *et al.*, 1984). The enzyme does not require phospholipids and is active in non-
40
41 194 ionic detergents.

42
43 195 Initially two enzymatic activities were shown to be involved in the proteolytic cleavage of
44
45 196 lipoproteins, Lsp that cleaves off the signal peptide of diacylglycerol-proLpp and a signal
46
47 197 peptide peptidase responsible for the degradation of signal peptide (SppA or Protease IV)
48
49 198 (Suzuki *et al.*, 1978, Novak & Dev, 1988). SppA is an intramembrane protease (Pacaud,
50
51 199 1982, Pacaud, 1982) utilizing a Ser/Lys dyad for catalysis (Wang *et al.*, 2008). It adopts a
52
53
54
55
56
57
58
59
60

1
2
3 200 tetrameric structure with a hydrophobic interior providing access to the catalytic site (Ichihara
4
5 201 *et al.*, 1986, Kim *et al.*, 2008) and cleaves its substrate in the hydrophobic region (Novak &
6
7 202 Dev, 1988). Recently, Saito *et al.* (Saito *et al.*, 2011) provided evidence that peptidase RseP
8
9 203 (YaeL in *E. coli*), which belongs to the zinc-metalloprotease group (S2P) of the
10
11 204 intramembrane-cleaving proteases (I-CLiPs) family of proteases (Urban, 2009), is responsible
12
13 205 for cleavage of signal peptides including those obtained after cleavage by Lsp. RseP is not the
14
15 206 exclusive signal peptide peptidase since some signal peptides were cleaved in the absence of
16
17 207 RseP and SppA. The sole natural substrate of RseP is the anti- σ^E factor RseA that upon cell
18
19 208 envelope stress is cleaved by DegS and further processed by RseP resulting in activation of σ^E
20
21 209 and the expression of stress-induced genes (Alba *et al.*, 2002). RseP has four transmembrane
22
23 210 segments with its N- and C-termini facing the periplasm (Kanehara *et al.*, 2001). The
24
25 211 periplasmic PDZ domain is specific for regulated processing of RseA after truncation by
26
27 212 DegS. Removal of the PDZ domain led to intramembrane cleavage of RseA (Hizukuri *et al.*,
28
29 213 2014), suggesting that this domain is not required for processing of lipoprotein signal
30
31 214 peptides.
32
33 215 Lsp proteins from firmicutes can complement an *lsp* temperature sensitive mutant of *E. coli*,
34
35 216 suggesting that the enzymes are functionally conserved as seen for Lgt (Pragai *et al.*, 1997),
36
37 217 however kinetic analyses have not yet been performed to determine specificity and
38
39 218 mechanism of the reaction. Lsp does not process prolipoprotein without S-diacylglyceryl
40
41 219 modification in proteobacteria, indicating that the enzyme specifically recognizes the fatty
42
43 220 acid acylated cysteine. Processing of Lpp occurs both in *E. coli* and *Bacillus subtilis* but at
44
45 221 different rates (Hayashi *et al.*, 1985). Apo-Lpp accumulates in *B. subtilis* probably due to
46
47 222 inefficient N-acylation or N-acetylation of apoLpp (Kurokawa *et al.*, 2012). Furthermore, the
48
49 223 two organisms differ in their susceptibility to globomycin as shown by the processing of
50
51 224 penicillinase (Hayashi & Wu, 1983). *Myxococcus xanthus* possesses four *lsp* genes, two of
52
53
54
55
56
57
58
59
60

1
2
3 225 which are part of the antibiotic TA biosynthetic cluster (Xiao & Wall, 2014). The Lsp
4
5 226 enzymes can complement an *lsp* depletion strain of *E. coli* only in the absence of Lpp
6
7 227 suggesting that Lsp-s of *M. xanthus* are less efficient than Lsp of *E. coli*. Lipoproteins of
8
9 228 *Streptococcus uberis* are processed by Eep, a homologue of enhanced expression of
10
11 229 pheromone from *Enterococcus faecalis* (An *et al.*, 1999), in the absence of Lsp in late-
12
13 230 stationary-phase cells (Denham *et al.*, 2009).

14
15
16 231 Structural information is not available for any of the lipoprotein modification enzymes,
17
18 232 including Lsp. Other bacterial signal peptidases, such as signal peptidase I (leader peptidase)
19
20 233 and type IV pilin signal peptidase (prepilin peptidase), share their membrane-embedded
21
22 234 characteristics and the hydrophobic nature of their substrates. The catalytic mechanism
23
24 235 (Paetzel, 2014) and the Ser/Lys active site (Wang *et al.*, 2008) of leader peptidase have been
25
26 236 reported. A soluble version of the enzyme, lacking its two N-terminal transmembrane
27
28 237 segments, is active *in vitro* (Kuo *et al.*, 1993), although slightly less compared to full-length
29
30 238 protein and it requires detergents or phospholipids for its activity (Tschantz *et al.*, 1995).
31
32 239 Several crystal structures of the soluble form have been solved (Kim *et al.*, 2008) and a recent
33
34 240 NMR structure suggests that the signal peptide remains in the bilayer in an unstructured
35
36 241 conformation and that the active site of leader peptidase functions at the membrane surface
37
38 242 (De Bona *et al.*, 2012) or well within the lipid bilayer (Paetzel, 2014). The membrane is
39
40 243 probably important in stabilizing the signal peptide while under reconstituted conditions the
41
42 244 detergents or phospholipids would serve an analogous role. Several inhibitors have been
43
44 245 identified including penem-type inhibitors (Allsop *et al.*, 1996) and lipopeptides (Paetzel *et*
45
46 246 *al.*, 2002). Differences in specificity between leader peptidases from different species may be
47
48 247 explained by structural variations in the active site (Auclair *et al.*, 2012). Prepilin peptidase is,
49
50 248 like Lsp, an aspartic protease that belongs to the class of aspartyl protease I-CLiPs (Erez *et*
51
52 249 *al.*, 2009) and is involved in processing of pre-pilin proteins (LaPointe & Taylor, 2000). I-
53
54
55
56
57
58
59
60

1
2
3 250 CLiPs are involved in intramembrane proteolysis liberating membrane-tethered domains of
4
5 251 membrane proteins that can function as regulatory molecules, and are found in many different
6
7 252 organisms (Erez *et al.*, 2009). Prepilin peptidase is an integral membrane protein and
8
9 253 processing of prepilin has been postulated to occur at the cytoplasmic side of the membrane,
10
11 254 allowing the subsequent addition of methyl groups onto phenylalanine (Strom & Lory, 1987).
12
13 255 A topology model was proposed based on data obtained with reporter fusion proteins and
14
15 256 topology prediction programs; prepilin peptidases have eight transmembrane segments with
16
17 257 their N- and C-termini are located in the periplasm, and the catalytic Asp dyad is facing the
18
19 258 cytoplasm (LaPointe & Taylor, 2000). The crystal structure of aspartyl protease FlaK, has
20
21 259 recently been solved (Hu *et al.*, 2011). The two active site Asp residues are located on top of
22
23 260 two α -helices, housed in a hydrophilic cavity in the membrane and facing the cytoplasm,
24
25 261 similar to the structure of presenilin (Hu *et al.*, 2011, Lu *et al.*, 2014). Lsp probably shares
26
27 262 structural features with both leader peptidase and aspartyl proteases. It interacts with
28
29 263 diacylglycerol-prolipoprotein as leader peptidase with signal peptides of secreted proteins in
30
31 264 such a way that the diacylglycerol-cysteine is accessible to the Asp dyad active site as in
32
33 265 aspartyl proteases, with the only difference that the active site is facing the periplasm.
34
35
36
37
38
39

266

267 *Globomycin – a specific inhibitor of Lsp*

268 Globomycin was first identified in 1978, as an antibiotic produced by various *Streptomyces*
269 strains with spheroplast-forming (global-shape) activity on *E. coli* (Inukai *et al.*, 1978, Inukai
270 *et al.*, 1978). It specifically inhibits proteobacteria such as *E. coli* (MIC 0.4 $\mu\text{g/ml}$ for *E. coli*
271 B) but not *Pseudomonas aeruginosa*. It is also less active against firmicutes (for example,
272 MIC >100 $\mu\text{g/ml}$ for *S. aureus* and *B. subtilis*) (Inukai *et al.*, 1978). Globomycin is a
273 lipophilic cyclic peptide with molecular formula $\text{C}_{32}\text{H}_{57}\text{N}_5\text{O}_2$ and a molecular weight of 655
274 (Nakajima *et al.*, 1978) (Fig. 3). Indications that the target of globomycin is Lsp were

1
2
3 275 reported in the last paper in a series of articles on globomycin discovery and its
4
5 276 characterization by Mamoru Arai's group (Inukai *et al.*, 1978). It was later shown that
6
7 277 diacylglyceryl-proLpp that accumulated in the cytoplasmic membrane in cells grown in the
8
9 278 presence of globomycin (Hussain *et al.*, 1980) could be converted into mature protein *in vitro*
10
11 279 when cell envelope fractions were incubated under optimal conditions. The gene encoding
12
13 280 Lsp was identified in *E. coli* by selecting clones from the Carbon-Clarke collection for
14
15 281 globomycin resistance, or by screening for complementation of a strain that is temperature
16
17 282 sensitive in the processing of diacylglyceryl-proLpp (Tokunaga *et al.*, 1983, Yamagata *et al.*,
18
19 283 1983). Kinetics studies showed that globomycin inhibits Lsp in a non-competitive manner
20
21 284 with a K_i of 36 nM, and a K_m value of 6 μ M was determined for diacylglyceryl-prolipoprotein
22
23 285 substrate (Dev *et al.*, 1985). Globomycin is mycobactericidal at elevated concentrations but
24
25 286 killing is independent of Lsp in *M. tuberculosis*, suggesting an alternative pathway of
26
27 287 inhibition in this bacterium (Banaiee *et al.*, 2007). Globomycin analogues have been
28
29 288 described that are more potent against proteobacteria and exhibit antibacterial activity against
30
31 289 firmicutes (Kiho *et al.*, 2003, Kiho *et al.*, 2004). A long alkyl side chain, the lipophilic part of
32
33 290 the molecule, increases activity and also shows moderate activity against *S. aureus*. The
34
35 291 hydroxyl group of L-Ser is essential but not that of L-allo-Thr (Kiho *et al.*, 2004). The lipid
36
37 292 moiety of globomycin is probably required to anchor the antibiotic into the membrane to
38
39 293 allow correct positioning of the peptidic part for interaction with the enzyme, but also seems
40
41 294 to play a direct role in globomycin-enzyme interaction. Differences in membrane composition
42
43 295 and/or membrane topology of Lsp might explain differences in antibacterial activities of
44
45 296 globomycin and its analogues on Lsp of different bacterial species. Another antibiotic, TA or
46
47 297 myxovirescin isolated from *Myxococcus xantus*, has been shown to target Lsp (Xiao *et al.*,
48
49 298 2012). Antibiotic TA is a cyclic macrolactam lactone that is active against proteobacteria and
50
51 299 some firmicutes (Rosenberg *et al.*, 1973).
52
53
54
55
56
57
58
59
60

300

301 *Apolipoprotein N-acyltransferase (Lnt)*

302 The membrane localization of Lnt of *E. coli* was demonstrated by Gupta and Wu in 1991
303 (Gupta & Wu, 1991), in the same study it was demonstrated that Lnt has a broad pH optimum
304 (pH 6.5-7.5) and that it requires the presence of detergents for its activity *in vitro*. In 2005 the
305 membrane topology of Lnt and the phenotype of an *lnt* depletion mutant was reported
306 (Robichon *et al.*, 2005). Several essential residues in Lnt were identified that are mainly
307 located in the catalytic periplasmic domain and include the catalytic triad E-K-C (Vidal-
308 Ingigliardi *et al.*, 2007). It was shown that growth of the *lnt* depletion mutant could be
309 restored by Lnt homologues of proteobacteria, but not actinobacteria (Vidal-Ingigliardi *et al.*,
310 2007). The reaction catalyzed by Lnt involves two steps. In the first step, the *sn*-1 of PE reacts
311 with the active site cysteine of Lnt resulting in the formation of a thioester-acyl enzyme
312 intermediate and a lysophospholipid by-product (Jackowski & Rock, 1986, Buddelmeijer &
313 Young, 2010, Hillmann *et al.*, 2011). In the second step, the acyl group is transferred to
314 apolipoprotein resulting in triacylated, mature lipoprotein (Buddelmeijer & Young, 2010).
315 Kinetics studies showed that Lnt follows a ping-pong mechanism whereby lyso-phospholipid
316 produced in the first reaction is released before the second substrate, apolipoprotein, is bound
317 and modified. With PE and a synthetic diacylated peptide (FSL-1) a K_m value of 8.0 μM and
318 a V_{\max} value of $350 \mu\text{mol}_{\text{FSL-1}} \text{min}^{-1} \mu\text{mol}^{-1}_{\text{Lnt}}$ were determined, corresponding to a specific
319 activity of $5.6 \mu\text{mol}_{\text{FSL-1}} \text{min}^{-1} \text{mg}^{-1}_{\text{Lnt}}$. Interestingly, similar kinetics were obtained with PagP
320 that catalyzes the transfer of an acyl group from PE to lipid A (Bishop *et al.*, 2000). Although
321 acyltransferases Lnt and PagP are involved in completely different pathways, their substrates
322 are highly abundant; 5×10^5 molecules of Lpp and 2×10^6 molecules of lipid A per cell
323 (Braun & Rehn, 1969, Raetz, 1986). Furthermore, similar K_m values have been reported for

1
2
3 324 Lsp and Lnt of *E. coli* for diacylglyceryl-proLpp and apo-lipopeptide, respectively (Dev *et al.*,
4
5 325 1985, Hillmann *et al.*, 2011).
6
7 326 Lnt is highly efficient in the second step of the reaction but less in the first step: k_{cat}/K_m of 4.8
8
9 327 $\times 10^3$ for PE versus 7.3×10^5 for FSL-1. Based on the kinetic data, the number of Lnt
10
11 328 molecules per cell was estimated between 100 and 200, indicating that the *N*-acyltransferase
12
13 329 reaction is fast and efficient since lipoproteins are very abundant. PE is the preferred substrate
14
15 330 with an optimal fatty acid chain length of C16-18, more specifically palmitate or oleate with a
16
17 331 saturated acyl chain in position *sn*-1 and a non-saturated acyl chain at *sn*-2 (Jackowski &
18
19 332 Rock, 1986, Hillmann *et al.*, 2011). Phospholipids with small polar headgroups can also serve
20
21 333 as acyl donor (Gupta *et al.*, 1991, Hillmann *et al.*, 2011). PagP and LpxA, which is involved
22
23 334 in the first step of lipopolysaccharide biosynthesis, possess a carbon-ruler that makes these
24
25 335 enzymes highly specific for the chain length of the acyl donor substrate (Wyckoff *et al.*, 1998,
26
27 336 Ahn *et al.*, 2004, Williams & Raetz, 2007). It is unlikely that Lnt has carbon ruler capacity
28
29 337 since the acyl chain length and composition of the phospholipid substrate are variable. On the
30
31 338 other hand, the *S*-diacylglyceryl moiety of the apolipoprotein substrate probably determines
32
33 339 substrate specificity due to variations in lipid composition depending on the bacterial species.
34
35 340 The gene encoding Lnt was first identified in *S. enterica* by screening the same library as
36
37 341 described for *lgt* for the accumulation of apoL-Lpp (Gupta *et al.*, 1993). The mutation causing
38
39 342 the temperature sensitive defect in Lnt was a substitution of glutamate 435 to lysine; a similar
40
41 343 mutation in *E. coli* did not result in a temperature sensitive phenotype (Robichon *et al.*, 2005).
42
43 344 Lnt activity in Actinomycetes was first reported in *M. smegmatis* (Tschumi *et al.*, 2009). A
44
45 345 strain of *M. smegmatis* deleted for *lnt* was viable and resulted in the accumulation of the
46
47 346 apolipoprotein form of two model lipoproteins LppX and LprF, directly demonstrating its *N*-
48
49 347 acyltransferase activity (Tschumi *et al.*, 2009, Brülle *et al.*, 2010). Lnt of mycobacteria
50
51 348 transfers either palmitate or tuberculostearic acid (in *M. bovis*) from phospholipids onto
52
53
54
55
56
57
58
59
60

1
2
3 349 apolipoprotein (Brülle *et al.*, 2013). Phospholipids of mycobacteria possess mainly
4
5 350 octadecanoic acid and tuberculostearic acid at the *sn*-1 position and palmitate at the *sn*-2
6
7 351 position (Okuyama *et al.*, 1967), suggesting that Lnt has different substrate specificity in
8
9 352 these species. Lnt of *M. smegmatis* was unable to complement a conditional *lnt* null mutant of
10
11 353 *E. coli*, suggesting that indeed these enzymes have different substrate specificity.
12
13 354 Furthermore, the enzyme was correctly inserted into the cytoplasmic membrane and shown to
14
15 355 have a similar membrane topology as Lnt of *E. coli* (Baulard *et al.*, 2003). Among the
16
17 356 essential residues in Lnt of *E. coli*, W237 and Y388 are not conserved in Lnt of *M. smegmatis*
18
19 357 (Vidal-Ingigliardi *et al.*, 2007, Tschumi *et al.*, 2009). These residues were shown to be
20
21 358 involved in the second step of the reaction, *N*-acylation of apolipoprotein, suggesting they
22
23 359 might play a role in substrate specificity (Buddelmeijer & Young, 2010). The *lnt* gene in *M.*
24
25 360 *smegmatis* (MSMEG_3860 or ppm2) is located adjacent to *ppm1* encoding polyprenol
26
27 361 monophosphomannose (Ppm) synthase that is involved in the transfer of mannose from GDP-
28
29 362 mannose to polyprenol phosphate, an important step in the biosynthesis of mannose-
30
31 363 containing lipoglycans (Gurcha *et al.*, 2002). Ppm synthase is essential for viability in *M.*
32
33 364 *smegmatis* (Rana *et al.*, 2012).

34
35
36
37 365 In *M. tuberculosis ppm1* (Rv2051c) encodes a two-domain protein, in which the N-terminal
38
39 366 domain is Lnt and the C-terminal domain Ppm synthase. The Lnt domain of Ppm1 enhances
40
41 367 Ppm synthase activity (Gurcha *et al.*, 2002). In mycobacteria where Lnt and Ppm synthase are
42
43 368 encoded by two genes, the proteins were shown to interact (Baulard *et al.*, 2003). In both
44
45 369 cases Lnt is thought to stabilize the Ppm synthase (Gurcha *et al.*, 2002, Baulard *et al.*, 2003).
46
47 370 A second *lnt*-like gene could be identified in *M. tuberculosis* (Rv2261c and Rv2262c) and *M.*
48
49 371 *bovis* (BCG_2279c), but the active site cysteine residue is replaced by serine (Brülle *et al.*,
50
51 372 2013). The role of these enzymes in lipoprotein modification is currently unknown.
52
53
54
55

56 373
57
58
59
60

1
2
3 374 Lipoproteins in Mycobacteria and Streptomyces are often, in addition to being acylated,
4
5 375 glycosylated (Espitia & Mancilla, 1989, Herrmann *et al.*, 1996, Gonzalez-Zamorano *et al.*,
6
7 376 2009, Sartain & Belisle, 2009, Wehmeier *et al.*, 2009, Brülle *et al.*, 2010). Recent findings
8
9 377 demonstrated a direct correlation between *N*-acylation and glycosylation of lipoproteins in
10
11 378 *Corynebacterium glutamicum* (Mohiman *et al.*, 2012). Lnt (Cg-Ppm2) of *C. glutamicum*
12
13 379 catalyzes *N*-acylation of apolipoproteins by addition of a palmitoyl moiety similar to *M.*
14
15 380 *smegmatis* (Tschumi *et al.*, 2009, Mohiman *et al.*, 2012). Lipid modifications in *C.*
16
17 381 *glutamicum* included a diacylglyceryl moiety (C16:0, C18:1) and a *N*-palmitoyl group
18
19 382 (C16:0) similar to lipoproteins of *E. coli* (Mohiman *et al.*, 2012). *N*-acylation of lipoproteins
20
21 383 was not affected in a Cg-*ppm1* mutant but proteins were no longer *O*-glycosylated with
22
23 384 hexose units, indicating that Ppm synthase is required for glycosylation of lipoproteins in *C.*
24
25 385 *glutamicum*. In a Cg-*ppm2* mutant lipoproteins are only diacylated and not glycosylated
26
27 386 (Mohiman *et al.*, 2012). A Cg-*ppm1* deletion mutant does not synthesize lipoglycans,
28
29 387 furthermore, their biosynthesis is also affected in the absence of Cg-*ppm2* (Lnt), probably
30
31 388 because Ppm synthase is less stable under these conditions (Gibson *et al.*, 2003).
32
33 389 Interestingly, Ppm1 of *M. tuberculosis* is able to complement both *N*-acylation and
34
35 390 glycosylation defects in *C. glutamicum* (Mohiman *et al.*, 2012) and to restore *N*-acylation in
36
37 391 *M. smegmatis* (Tschumi *et al.*, 2009). The Lnt domain of Ppm1 alone does not restore *N*-
38
39 392 acylation but does restore glycosylation in *C. glutamicum*. This strengthens the interpretation
40
41 393 that the activities of Lnt and Ppm synthase are tightly linked and illustrate that these enzymes
42
43 394 operate in a common pathway implicated in envelope biosynthesis.
44
45
46
47
48
49
50

395

51 396 All Streptomyces species have two *lnt* genes (Widdick *et al.*, 2011). In *S. scabies*, Lnt1 is
52
53 397 responsible for *N*-acylation of lipoproteins since lipoproteins are diacylated in *lnt1* and
54
55 398 *lnt1lnt2* mutants. In the absence of Lnt2, however, both di- and triacylated proteins were
56
57
58
59
60

1
2
3 399 detected, suggesting a role for Lnt2 in efficient *N*-acylation of lipoproteins (Widdick *et al.*,
4
5 400 2011). Since these bacteria undergo different developmental stages, gene expression and
6
7 401 activity of lipoprotein modifying enzymes might be tightly regulated depending on
8
9 402 environmental conditions. In this respect it is interesting to note that the degree of fatty acid
10
11 403 acylation varies greatly in firmicutes depending on growth conditions. For example,
12
13 404 diacylated lipoproteins accumulated in *S. aureus* during late-exponential growth at low pH
14
15 405 (Kurokawa *et al.*, 2012). New protein synthesis is required for both accumulation of
16
17 406 diacylated proteins and *N*-acylation of these proteins during pH upshift. These data suggest
18
19 407 that regulation of *lnt* expression or pH-mediated enzyme activity control *N*-acylation of
20
21 408 lipoproteins. Assuming that phospholipids are also substrate for *N*-acylation in firmicutes,
22
23 409 Lnt-like enzymes of these species probably have different specificities for the acyl-donor
24
25 410 substrate than those of proteobacteria.
26
27
28
29

30 411

31
32 412 After completion of the Lnt reaction, the lysophosphatidylethanolamine, or 2-acyl-
33
34 413 glycerophosphoethanolamine (2-acyl-GPE) by-product can either be degraded by
35
36 414 lysophospholipase PldB (Hsu *et al.*, 1991) or recycled in the synthesis of phospholipid via the
37
38 415 acyl-acyl carrier protein synthetase/2-acylglycerophosphoethanolamine acyltransferase
39
40 416 pathway (Cooper *et al.*, 1989, Jackowski *et al.*, 1994). 2-acyl-GPE first needs to be
41
42 417 translocated to the inner leaflet of the cytoplasmic membrane, a process catalyzed by LplT,
43
44 418 before it can be used as a substrate for PL synthesis (Harvat *et al.*, 2005). The Aas enzyme is
45
46 419 a cytoplasmic membrane protein (Cooper *et al.*, 1989) that contains both enzymatic activities
47
48 420 with acyltransferase located at the N-terminal end and acyl ACP synthetase located at the C-
49
50 421 terminal end (Jackowski *et al.*, 1994). In the first step of the reaction acyl-ACP synthetase
51
52 422 adds saturated fatty acids onto ACP and in the second step fatty acid is transferred to the *sn*-1
53
54 423 position of 2-acyl-GPE by the acyltransferase resulting in the formation of new PE.
55
56
57
58
59
60

1
2
3 424 Alternatives for removal of 2-acyl-GPE are the production of PE and GPE from two
4
5 425 molecules of GPE (Homma & Nojima, 1982), and another phospholipase that degrades 2-
6
7 426 acyl-GPE (Doi & Nojima, 1975).
8

9
10 427

11 428 *Sorting of lipoproteins to the outer membrane*

12
13
14 429 The majority of lipoproteins reside in the inner leaflet of the outer membrane (Tokuda *et al.*,
15
16 430 2007), although recent examples of surface-exposed lipoproteins have been reported (see
17
18 431 below). They reach this cellular location by a specific lipoprotein outer membrane
19
20 432 localization pathway (Lol) that is composed of five proteins: a cytoplasmic ATP-ase LolD,
21
22 433 two cytoplasmic membrane proteins LolC and LolE, a periplasmic chaperone LolA and an
23
24 434 outer membrane receptor LolB (Fig. 4). Sorting and translocation of lipoproteins by Lol is
25
26 435 dependent on the lipoprotein-sorting signal determined by specific residues located C-
27
28 436 terminally to the diacylglyceryl-cysteine. The Lol pathway has been described in great detail
29
30 437 in several excellent reviews (Tokuda *et al.*, 2014, Zuckert, 2014) and will only be briefly
31
32 438 discussed in light of functionality with enzymes involved in lipoprotein modification. *N*-
33
34 439 acylation of lipoproteins by Lnt is essential for the Lol-dependent release of lipoproteins from
35
36 440 the cytoplasmic membrane (Fukuda *et al.*, 2002), however, overexpression of *lolCDE* can
37
38 441 compensate for lack of *N*-acylation, in the absence of Lpp, and results in the release of
39
40 442 diacylated lipoproteins from the membrane and correct outer membrane localization (Narita
41
42 443 & Tokuda, 2011). However, the efficiency of outer membrane targeting is dependent on the
43
44 444 nature of the lipoprotein (Narita & Tokuda, 2011). Model lipoproteins containing an outer
45
46 445 membrane-sorting signal are not localized in the outer membrane, neither released from the
47
48 446 cytoplasmic membrane in absence of Lnt. This suggests that the *N*-acyl moiety of lipoproteins
49
50 447 plays an important role in lipoprotein translocation through the periplasm. Mature lipoprotein
51
52 448 first interacts with LolE, is then transferred to LolC, and upon ATP hydrolysis by LolD, the
53
54
55
56
57
58
59
60

1
2
3 449 interaction between LolC and LolA leads to charging of LolA with lipoprotein (Okuda &
4
5 450 Tokuda, 2009). The interaction between LolA and lipoprotein is weaker than the interaction
6
7 451 between LolB and lipoprotein, driving transfer from LolA to LolB and preventing back-
8
9 452 transfer to LolCE (Taniguchi *et al.*, 2005). It is unknown how lipoproteins interact with the
10
11 453 ABC transporter LolCDE and by which mechanism lipoproteins are released from the
12
13 454 cytoplasmic membrane. Crystal structures of LolA and soluble LolB, lacking its lipid-anchor,
14
15
16 455 have been solved (Takeda *et al.*, 2003). The calculated size of the cavity is predicted to
17
18 456 accommodate one but is not large enough for three fatty acid chains. Structure-function
19
20 457 analyses of LolA of *P. aeruginosa* showed that one large hydrophobic surface patch is likely
21
22 458 to be involved in binding of acyl chains (Remans *et al.*, 2010). Decreasing its hydrophobic
23
24 459 nature abolished LolA-dependent release of lipoproteins from the cytoplasmic membrane
25
26
27 460 (Remans *et al.*, 2010). The fatty acid acyl moiety of lipoprotein, together with its sorting
28
29 461 signal, clearly plays a role in substrate recognition by the Lol machinery. LolC and LolE
30
31 462 share a similar membrane topology and their periplasmic domains share sequence identity
32
33 463 with each other as well as with LolB (Okuda & Tokuda, 2009). LolA interacts specifically
34
35 464 with LolC and not with LolE. Differences in binding affinity between LolE and LolC for
36
37 465 lipoprotein, similar as described for LolA and LolB, may explain the molecular mechanism of
38
39 466 transfer. Characterization of the lipid-protein interaction by structural- and biophysical studies
40
41 467 is likely to provide more insight into the mechanism of Lol-dependent targeting of
42
43 468 lipoproteins to the outer membrane.

44
45
46
47 469 Inhibitors of the Lol machinery were identified in a chemical genomic approach (Pathania *et*
48
49 470 *al.*, 2009) which utilized a combination of three *in vitro* assays (Ito *et al.*, 2007). Treatment
50
51 471 of cells with MAC13243 led to the accumulation of Lpp in the cytoplasmic membrane. It
52
53 472 directly interacts with LolA (Pathania *et al.*, 2009). Further characterization of this compound
54
55 473 led to the finding that a degradation product is the active species (Barker *et al.*, 2013). This
56
57
58
59
60

1
2
3 474 thiourea compound is an analog of A22, an inhibitor of bacterial actin MreB (Barker *et al.*,
4
5 475 2013) and seems to inhibit bacterial growth in a non-specific fashion.
6

7 476 The Lol machinery is not fully conserved in proteobacteria, LolB is only found in β - and γ -
8
9
10 477 proteobacteria and also LolCE are often missing (Okuda & Tokuda, 2011). Proteomics
11
12 478 analyses showed that lipoproteins reside in the outer membrane of diderm actinomycetes but
13
14 479 the sorting mechanism is completely unknown.
15

16 480

17
18
19 481 *Lipoproteins involved in key processes of envelope biosynthesis*

20
21 482 The most abundant lipoprotein in γ -proteobacteria is Lpp that is covalently linked to murein
22
23 483 (peptidoglycan) and the first protein shown to be lipidated (Braun & Rehn, 1969). Lpp is also
24
25 484 the most abundant protein in the cell and plays an important role in homeostasis of the cell
26
27 485 envelope. A recent study identified a σ^E -regulated small RNA, MicL, which specifically
28
29 486 targets *lpp* (Guo *et al.*, 2014). The mechanism of regulation allows decrease of Lpp
30
31 487 translation and acceleration of degradation of the stable *lpp* mRNA. σ^E up-regulates proteins
32
33 488 that facilitate assembly of outer membrane proteins and transport of LPS under stress
34
35 489 conditions. At the same time it down-regulates OMP synthesis by up-regulation of sRNAs
36
37 490 such as MicL (Guo *et al.*, 2014). A strain deleted for *lpp* is very sensitive to EDTA and
38
39 491 cationic dyes and somewhat sensitive to detergents and it also leaks periplasmic proteins into
40
41 492 the extracellular space (Hirota *et al.*, 1977, Yem & Wu, 1978). One-third of Lpp is covalently
42
43 493 linked to peptidoglycan, while two-third is in the cell envelope but not anchored to the cell
44
45 494 wall, the so-called free form (Inouye *et al.*, 1972). There is a dynamic equilibrium between
46
47 495 the two forms and the protein is homogeneously distributed over the cell (Hiemstra *et al.*,
48
49 496 1986, Hiemstra *et al.*, 1987). The enzymes responsible for cross-linking Lpp to peptidoglycan
50
51 497 were identified in 2008 (Magnet *et al.*, 2008). YbiS was shown to catalyze the covalent
52
53 498 anchoring of Lpp to peptidoglycan, but two other enzymes ErfK and YcfS could also perform
54
55
56
57
58
59
60

1
2
3 499 this reaction. These enzymes belong to the family of L,D-transpeptidases found in firmicutes
4
5 500 (Mainardi *et al.*, 2005, Magnet *et al.*, 2007). YbiS is expected to cleave the peptide bond
6
7 501 between meso-DAP and D-Ala and to link meso-DAP to the L-Lys residue in Lpp (Magnet *et*
8
9 502 *al.*, 2008). Mis-localization of Lpp in the cytoplasmic membrane is lethal when cross-linked
10
11 503 to the peptidoglycan (Yakushi *et al.*, 1997). The highly abundant Lpp homologue in *P.*
12
13 504 *aeruginosa*, OprI exist in a free form and is not covalently cross-linked to peptidoglycan
14
15 505 (Mizuno & Kageyama, 1979, Cornelis *et al.*, 1989). When produced in *E. coli* it is exposed on
16
17 506 the surface of cells (Cornelis *et al.*, 1996). Interestingly, the free form of *E. coli* Lpp is also
18
19 507 exposed on the cell surface (Cowles *et al.*, 2011), although detection of Lpp by immunogold
20
21 508 labeling was only successful upon permeabilization of the outer membrane with TRIS-EDTA
22
23 509 (Hiemstra *et al.*, 1986). Lpp is an elongated trimer composed of long α -helical domains that
24
25 510 adopt a coiled coil, which reflects its repetitive characteristics (Braun & Bosch, 1972, Choi *et*
26
27 511 *al.*, 1986). The last amino acids of the C-terminus form a hydrophobic capping motif that is
28
29 512 important for binding to PG and possibly involved in the recognition of lipoprotein by ligase
30
31 513 YbiS (Zhang & Wu, 1992, Shu *et al.*, 2000). It is thus likely that Lpp has a dual orientation,
32
33 514 similar as described for peptidoglycan-associated Lipoprotein P6 of *Haemophilus influenza*
34
35 515 (Michel *et al.*, 2013), although the correlation between surface-exposed orientation and
36
37 516 biological function is not yet known.

38
39 517 Surface exposed lipoproteins are abundant in *Borrelia*, which lacks LPS in the outer
40
41 518 membrane (for a recent review see (Zuckert, 2014)). The N-terminal membrane-tethering
42
43 519 peptide keeps lipoproteins of *Borrelia burgdorferi* in a translocation compatible state that
44
45 520 allow them to be secreted to the cell surface probably via a flippase complex. Several other
46
47 521 examples of surface-exposed lipoproteins have been reported in proteobacteria, including
48
49 522 proteins that are translocated via type II secretion machinery (PulA) (Pugsley *et al.*, 1986) or
50
51 523 via an autotransporter mechanism (NalP and SphB1) (Coutte *et al.*, 2003, van Ulsen *et al.*,
52
53
54
55
56
57
58
59
60

1
2
3 524 2003). In case of NalP of *Neisseria meningitidis*, it was demonstrated that lipidation is
4
5 525 required for efficient release of surface-exposed proteins by delaying its own release from the
6
7 526 cell surface through autocatalytic processing (Roussel-Jazede *et al.*, 2013). Similarly, non-
8
9 527 lipidated SphB1 is efficiently secreted but is unable to cleave its substrate filamentous
10
11 528 haemagglutinin FHA (Coutte *et al.*, 2003), which is important for virulence of *Bordetella*
12
13 529 *pertussis* (Coutte *et al.*, 2003).

14
15
16 530 The Lpt pathway transports LPS from the cytoplasmic membrane to the cell surface (Ruiz *et*
17
18 531 *al.*, 2009). LptE is an essential OM lipoprotein that stabilizes the LptD OM channel
19
20 532 responsible for correct translocation of LPS (Bos *et al.*, 2004, Chng *et al.*, 2010). Recent
21
22 533 studies showed that LptE forms a plug inside the β -barrel structure of LptD (Freinkman *et al.*,
23
24 534 2011) and that it changes the biophysical state of LPS to allow transport and OM insertion
25
26 535 (Malojic *et al.*, 2014). The N-terminal lipid anchor is not required for function since a variant
27
28 536 of LptE lacking the signal sequence including the cysteine complements a *lptE* deletion strain
29
30 537 and is able to form a complex with LptD (Chng *et al.*, 2010). LptD is inserted into the OM by
31
32 538 the β -barrel assembly machine (Bam complex) (Chimalakonda *et al.*, 2011). Four lipoproteins
33
34 539 (BamB-E) are part of the Bam complex, of which BamD is essential for the assembly and/or
35
36 540 insertion of proteins in the OM (Malinverni *et al.*, 2006). BamC is surface exposed (Webb *et*
37
38 541 *al.*, 2012). How the lipid moiety is orientated in the outer membrane is still an open question.

39
40
41 542 Biosynthesis of peptidoglycan is catalyzed by several membrane-bound enzymes, among
42
43 543 which the bifunctional penicillin-binding proteins PBP1A and PBP1B. These enzymes each
44
45 544 require an outer membrane lipoprotein, LpoA and LpoB, respectively, for their function
46
47 545 (Paradis-Bleau *et al.*, 2010, Typas *et al.*, 2010). The Lpo proteins bind specifically to their
48
49 546 cognate PBP and stimulate transpeptidase activity. LpoB with an inner membrane retention
50
51 547 signal is functional as long as the flexible N-terminal domain is present (Typas *et al.*, 2010). It
52
53 548 is currently unknown whether non-lipidated LpoA is functional.

1
2
3 5494
5 550 *The role of lipoprotein modification in virulence*

6
7 551 The role of individual lipoproteins on virulence of pathogenic bacteria has been studied (for a
8
9 552 review see (Kovacs-Simon *et al.*, 2010)). Signaling of the host immune system by
10
11 553 lipoproteins and lipopeptides occurs via Toll-like receptor 2, either via TLR2-1 in case of
12
13 554 diacylated proteins or via TLR2-6 heterodimers in case of triacylated proteins. The lipid
14
15 555 moiety plays an important role in the interaction with these receptors (Jin *et al.*, 2007, Kang *et*
16
17 556 *al.*, 2009). In recent years the effect of lipoprotein modification on virulence has been
18
19 557 addressed using *lgt* and *lsp* deletion mutants of pathogenic bacteria and depending on the
20
21 558 pathogen and the infection model used, various effects on virulence were obtained.

22
23 559 For example, impaired colonization of the nasopharynx and a decrease in virulence in
24
25 560 pneumonia and septicaemia mouse models was reported for *Streptococcus pneumoniae*
26
27 561 deleted for *lgt* (Petit *et al.*, 2001, Chimalapati *et al.*, 2012). TLR-2 signaling is dependent on
28
29 562 pneumococcal lipoproteins and NF- κ B and cytokine release were reduced in a Δ *lgt* strain
30
31 563 (Tomlinson *et al.*, 2014). Intracellular survival of *Listeria monocytogenes* was affected
32
33 564 (Baumgärtner *et al.*, 2007) and the Δ *lgt* strain was attenuated in a mouse model (Machata *et*
34
35 565 *al.*, 2008). Lipoproteins are released into the culture supernatant of this strain (Baumgärtner *et*
36
37 566 *al.*, 2007). Inactivation of *lsp* in *L. monocytogenes* led to a severe growth defect in
38
39 567 macrophages and a reduced capacity of phagosomal escape leading to attenuated virulence
40
41 568 (Reglier-Poupet *et al.*, 2003). Expression of the *lsp* gene was strongly induced inside
42
43 569 phagosomes probably caused by environmental conditions similar to pH-regulation of *N*-
44
45 570 acylation in *S. aureus* (Reglier-Poupet *et al.*, 2003, Kurokawa *et al.*, 2012). Inefficient
46
47 571 germination of spores of a *lgt* deletion strain of *Bacillus anthracis* led to attenuation of
48
49 572 virulence (Okugawa *et al.*, 2012). Lipoproteins of an *lsp* deletion mutant of *M. tuberculosis*
50
51 573 are not processed and the strain was attenuated in an animal model of tuberculosis (Sander *et*
52
53
54
55
56
57
58
59
60

1
2
3 574 *al.*, 2004, Rampini *et al.*, 2008). Reduced innate immune activation was observed with a Δlgt
4
5 575 strain of *Streptococcus suis* (Wichgers Schreur *et al.*, 2011), but no difference in virulence
6
7 576 was observed between a wild type strain and a *lsp* deletion mutant in an infection model in
8
9
10 577 piglets (De Greeff *et al.*, 2003). Deletion of either *lgt* or *lsp* in *Streptococcus sanguinis* has
11
12 578 only a slight effect on endocarditis virulence (Das *et al.*, 2009). No significant effect on
13
14 579 virulence was observed in *Streptococcus equi* (Hamilton *et al.*, 2006, Das *et al.*, 2009).
15
16 580 Escape of immune recognition caused lethal infections by a Δlgt strain of *S. aureus* but a Δlsp
17
18 581 strain was attenuated (Bubeck-Wardenburg *et al.*, 2006). Enhanced lethality was shown in a
19
20
21 582 mouse model for neonatal sepsis by Δlgt of *Streptococcus agalactiae* (Henneke *et al.*, 2008).
22
23 583 Stimulation of the immune system via TLR2 during early stages of infection is important for
24
25 584 elimination of pathogens. The examples described here clearly show that both the lipid
26
27 585 moiety and the functional characteristics of lipoproteins determine virulence capacity.
28
29
30 586

31 32 587 *Protein lipidation in other microbes*

33
34 588 Lipoproteins are predicted in Archaea, but orthologous genes for lipoprotein modifying
35
36 589 enzymes could not be identified in their genomes. Recent findings in *Haloferax volcanii*
37
38 590 show that the Tat-dependent secretion of predicted lipoproteins depends on the conserved
39
40 591 cysteine in the putative lipobox (Gimenez *et al.*, 2007, Storf *et al.*, 2010). Future studies will
41
42 592 provide direct evidence for lipidation of these proteins and will demonstrate whether
43
44 593 phospho-, glyco- or phospho-glyco-lipids that constitute archaeal membranes, and are
45
46 594 substantially different from their bacterial counterparts, are the source of modification
47
48
49 595 (Villanueva *et al.*, 2014).

50
51
52 596 In eukaryotes, including yeast, various types of protein lipidation exist including *S*-
53
54 597 palmitoylation, *N*-myristoylation and *S*-prenylation (Aicart-Ramos *et al.*, 2011). In the
55
56 598 process of *S*-palmitoylation, palmitate is transferred onto a cysteine residue catalyzed by
57
58
59
60

1
2
3 599 protein palmitate transferases (PAT) containing DHHC (Asp-His-His-Cys) cysteine rich
4
5 600 domains that results in the formation of a thioester-linked palmitoylated protein (Dietrich &
6
7 601 Ungermann, 2004). The PAT enzymes are polytopic integral membrane proteins located in
8
9 602 the ER or Golgi. The active site is facing the cytoplasm where acyl-CoA functions as the acyl
10
11 603 donor. Multiple DHHC enzymes have been identified in *Saccharomyces cerevisiae* but their
12
13 604 substrate specificity is still poorly understood. Recent work on the Erf2-Erf4 PAT complex in
14
15 605 *S. cerevisiae* showed that it catalyzes a two-step reaction in which Erf2 undergoes auto-
16
17 606 acylation (Mitchell *et al.*, 2010). Erf2 transfers the palmitate group onto the substrate and Erf4
18
19 607 is required for stabilization of Erf2 and for the formation of the Erf2-palmitate intermediate
20
21 608 (Mitchell *et al.*, 2012). *S*-palmitoylation is a reversible process due to the action of acyl-
22
23 609 protein thioesterases. Together these two processes allow for regulated control of membrane-
24
25 610 associated proteins, such as small GTPase Ras, the function of which depends on their lipid
26
27 611 anchor.

28
29
30
31 612 Several examples have been described of bacterial effector proteins that contain eukaryotic
32
33 613 lipidation motifs and that are modified by lipids upon entry into host cells. A farnesyl or
34
35 614 geranylgeranyl isoprenyl lipid moiety is added to cysteine residue of the conserved sequence
36
37 615 leading to enhanced membrane affinity and localization of effector proteins to membranes of
38
39 616 host cells (Ivanov *et al.*, 2010).

40
41
42 617

43 44 618 *Concluding remarks*

45
46
47 619 Lipoproteins are highly abundant in bacteria, and require therefore efficient maturation. The
48
49 620 acyltransferases and signal peptidase involved in this pathway are not abundant, estimated to
50
51 621 only a few hundred molecules per cell. It is very likely that these enzymes exist in a complex
52
53 622 to guarantee complete and efficient lipoprotein modification. The existence of a lipoprotein
54
55 623 modification complex was already suggested in 1982 (Tokunaga *et al.*, 1982). This presumed
56
57
58
59
60

1
2
3 624 complex might co-localize and function together with other essential protein complexes
4
5 625 including the Sec and Tat secretion machineries. In this respect it is intriguing to understand
6
7 626 how the lipoprotein modification machinery recognizes non-folded- and fully folded
8
9 627 substrates that are translocated via Sec and Tat, respectively. The signal peptide of both types
10
11 628 of lipoprotein substrates including the early mature region of the precursor protein is thought
12
13 629 to exist in a flexible conformation inside the translocon. Lateral opening of the Sec channel
14
15 630 can be envisaged for insertion of lipoproteins into the lipid bilayer (Chatzi *et al.*, 2014),
16
17 631 whether lateral gating of the Tat complex occurs is currently unknown (Patel *et al.*, 2014).
18
19 632 Once inserted into the membrane, Lgt binds the signal peptide and the first few amino acids
20
21 633 of the mature protein and catalyzes the first step in the lipidation pathway.
22
23 634 Several examples clearly demonstrate that some essential lipoproteins are perfectly functional
24
25 635 without their lipid anchor what raises the following questions: what is the role of the lipid
26
27 636 moiety, and how does the degree of lipidation influence protein function? Unlike membrane
28
29 637 proteins, lipoproteins are expected to be more mobile within lipid bilayers giving them more
30
31 638 flexibility, although this has not been experimentally tested. For lipoproteins in monoderm
32
33 639 bacteria it has been postulated that the N-terminal lipid anchor keeps the protein close to the
34
35 640 membrane while the extended functional domain participates in various biological processes.
36
37 641 Many lipoproteins in these organisms fulfill equivalent functions as periplasmic proteins in
38
39 642 diderm bacteria. Accessory proteins such as LptE and LpoA/B interact strongly with their
40
41 643 partner proteins, for which the lipid part is not essential, although the process in which they
42
43 644 are involved might be more efficient when these proteins are present in lipidated form. In the
44
45 645 case of lipoproteins that themselves fulfill specific functions and not in complex with other
46
47 646 proteins, such as surface-exposed proteases or targeting of proteins to the OM, the lipid
48
49 647 anchor becomes essential. The lipoprotein modification pathway seems to be tightly regulated
50
51 648 since a lipoprotein can exist in both di- or triacylated form in one bacterial species, depending
52
53
54
55
56
57
58
59
60

1
2
3 649 on growth conditions. The fact that multiple copies of genes encoding modification enzymes
4
5 650 exist in bacteria that undergo various developmental stages also suggest that regulation of
6
7 651 their expression is environmentally controlled.
8

9
10 652 The lipoprotein modification pathway represents an attractive target for antibiotic
11
12 653 development. It is essential for the viability of all proteobacteria examined to date, which
13
14 654 include many important human pathogens. Furthermore, Lsp and Lnt are membrane-bound
15
16 655 with catalytic domains facing the bacterial periplasm. This topology makes at least two steps
17
18 656 of lipoprotein biogenesis accessible to small molecules that will be capable of inhibiting
19
20 657 enzymes without a need to traverse the relatively impermeable cytoplasmic membrane or risk
21
22 658 elimination by the action of efflux pumps. For future studies on lipoprotein modification and
23
24 659 function it is important to include proteomic analysis of membrane-bound and secreted
25
26 660 lipoproteins and to determine the lipidation state and lipid composition by mass spectrometry
27
28 661 (Cain *et al.*, 2014). These approaches not only allow the identification and characterization of
29
30 662 specific lipoproteins that act as virulence factors but also demonstrate a correlation between
31
32 663 lipidation and the stage of infection. Structural and mechanistic properties of enzymes
33
34 664 involved in lipidation of proteins in various organisms will highlight similarities and
35
36 665 differences and will provide ways of finding new species specific antibacterial agents.
37
38
39
40

41 666

42 667 *Acknowledgements*

43
44
45 668 I thank Joel Berry, Richard Wheeler and Nicolas Bayan for constructive comments and all
46
47 669 members of the Biology and Genetics of the Bacterial Cell Wall Unit at the Institut Pasteur
48
49 670 for their support.
50

1
2
3 671 Figure legends
4

5 672
6

7 **673 Figure 1. Lipoprotein modification pathway in bacteria**
8

9
10 674 Lipoprotein modification occurs in the cytoplasmic membrane (CM) by the sequential action
11
12 675 of three membrane-bound enzymes Lgt, Lsp and Lnt. Prolipoprotein is inserted into the
13
14 676 membrane via the Sec or Tat secretion machinery through recognition of its signal peptide
15
16 677 (SP). This sequence also contains the lipobox (LB) specific for bacterial lipoproteins. Lgt
17
18 678 catalyzes the transfer of a diacylglyceryl group from phosphatidylglycerol (PG) onto
19
20 679 prolipoprotein resulting in diacylglyceryl-prolipoprotein. Cleavage of the signal peptide by
21
22
23 680 Lsp liberates the α -amino group of diacylglyceryl-cysteine that then becomes acylated by Lnt
24
25 681 resulting in mature triacylated lipoprotein. Lnt preferentially uses phosphatidylethanolamine
26
27 682 (PE) as acyl donor. Alternative N-acyl modifications have been observed in lipoproteins from
28
29 683 firmicutes and mollicutes.
30

31 684
32
33

34 **685 Figure 2. Membrane topology of modification enzymes**
35

36 686 Schematic representation of membrane topology and essential residues (in red) in Lgt, Lsp
37
38 687 and Lnt. Numbering of amino acids correspond to sequences of *E. coli* proteins.
39
40 688 C=cytoplasm, CM=cytoplasmic membrane, P=periplasm. Catalytic site residues are shown in
41
42 689 yellow. Conserved domains are indicated as white boxes. See text for details.
43
44

45 690
46

47 **691 Figure 3. Structure of globomycin**
48

49 692 Globomycin is a lipophilic cyclic peptide. Derivatives have been synthesized and analyzed for
50
51 693 their activity against a variety of bacteria, in particular the length of the lipophilic part (A),
52
53 694 and the role of the hydroxyl groups of threonine (B) and serine (C) have been addressed.
54
55

56 695
57
58
59
60

1
2
3 696 **Figure 4. Lol machinery in proteobacteria**

4
5 697 The Lol machinery is involved in translocation of mature (triacylated) lipoproteins from the
6
7 698 cytoplasmic membrane (CM) to the outer membrane (OM). The ABC transporter component
8
9 699 of the machinery is composed of membrane proteins LolC and LolE and cytoplasmic ATPase
10
11 700 LolD. The periplasmic chaperone LolA binds the lipoprotein, upon interaction with LolC and
12
13 701 hydrolysis of ATP by LolD, and transfers it to receptor protein LolB. The lipoprotein is then
14
15 702 inserted into the outer membrane. Several lipoproteins are located on the cell surface;
16
17 703 however, the mechanism for their translocation and the orientation of the fatty acids in the
18
19 704 membrane is not yet understood.
20
21
22
23
24
25
26
27
28
29
30
31
32
33
34
35
36
37
38
39
40
41
42
43
44
45
46
47
48
49
50
51
52
53
54
55
56
57
58
59
60

705 References:

706

707 Ahn VE, Lo EI, Engel CK, Chen L, Hwang PM, Kay LE, Bishop RE & Prive GG (2004) A
708 hydrocarbon ruler measures palmitate in the enzymatic acylation of endotoxin. *The*
709 *EMBO journal* **23**: 2931-2941.

710

711 Aicart-Ramos C, Valero RA & Rodriguez-Crespo I (2011) Protein palmitoylation and
712 subcellular trafficking. *Biochimica et biophysica acta* **1808**: 2981-2994.

713

714 Alba BM, Leeds JA, Onufryk C, Lu CZ & Gross CA (2002) DegS and YaeL participate
715 sequentially in the cleavage of RseA to activate the sigma(E)-dependent
716 extracytoplasmic stress response. *Genes & development* **16**: 2156-2168.

717

718 Allsop A, Brooks G, Edwards PD, Kaura AC & Southgate R (1996) Inhibitors of bacterial
719 signal peptidase: a series of 6-(substituted oxyethyl)penems. *The Journal of antibiotics*
720 **49**: 921-928.

721

722 Ames GF (1968) Lipids of Salmonella typhimurium and Escherichia coli: structure and
723 metabolism. *Journal of bacteriology* **95**: 833-843.

724

725 An FY, Sulavik MC & Clewell DB (1999) Identification and characterization of a
726 determinant (eep) on the Enterococcus faecalis chromosome that is involved in
727 production of the peptide sex pheromone cAD1. *Journal of bacteriology* **181**: 5915-5921.

728

729 Asanuma M, Kurokawa K, Ichikawa R, Ryu K, Chae J, Dohmae N, Lee BL & Nakayama H
730 (2010) Structural evidence of α -aminoacylated lipoproteins of *Staphylococcus aureus*.
731 *FEBS J* **278**: 716-728.

732

733 Auclair SM, Bhanu MK & Kendall DA (2012) Signal peptidase I: cleaving the way to
734 mature proteins. *Protein science : a publication of the Protein Society* **21**: 13-25.

735

736 Babu MM, Priya ML, Selvan AT, Madera M, Gough J, Aravind L & Sankaran K (2006) A
737 database of bacterial lipoproteins (DOLOP) with functional assignments to predicted
738 lipoproteins. *J Bacteriol* **188**: 2761-2773.

739

740 Banaiee N, Jacobs WR & Ernst JD (2007) LspA-independent action of globomycin on
741 Mycobacterium tuberculosis. *The Journal of antimicrobial chemotherapy* **60**: 414-416.

742

743 Banerjee S & Sankaran K (2012) First ever isolation of bacterial prolipoprotein
744 diacylglyceryl transferase in single step from Lactococcus lactis. *Protein Expr Purif* **87**:
745 120-128.

746

747 Barker CA, Allison SE, Zlitni S, Nguyen ND, Das R, Melacini G, Capretta FA & Brown ED
748 (2013) Degradation of MAC13243 and studies of the interaction of resulting thiourea
749 compounds with the lipoprotein targeting chaperone LolA. *Bioorganic and Medicinal*
750 *Chemistry Letters* **23**: 2426-2431.

751

752 Baulard AR, Gurcha SS, Engohang-Ndong J, Gouffi K, Locht C & Besra GS (2003) *In vivo*
753 interaction between the polyprenol phosphate mannose synthase Ppm1 and the integral

754

755

756

757

758

759

760

- 1
2
3 754 membrane protein Ppm2 from *Mycobacterium smegmatis* revealed by a bacterial two-
4 755 hybrid system. *J Biol Chem* **278**: 2242-2248.
5 756
6 757 Baumgärtner M, Karst U, Gerstel B, Loessner M, Wehland J & Jansch L (2007)
7 758 Inactivation of *lgt* allows systematic characterization of lipoproteins from *Listeria*
8 759 *monocytogenes*. *J Bacteriol* **189**: 313-324.
9 760
10 761 Bell-Pedersen D, Galloway Salvo JL & Belfort M (1991) A transcription terminator in the
11 762 thymidylate synthase (*thyA*) structural gene of *Escherichia coli* and construction of a
12 763 viable *thyA*::Kmr deletion. *Journal of bacteriology* **173**: 1193-1200.
13 764
14 765 Bishop RE, Gibbons HS, Guina T, Trent MS, Miller SI & Raetz CR (2000) Transfer of
15 766 palmitate from phospholipids to lipid A in outer membranes of gram-negative bacteria.
16 767 *The EMBO journal* **19**: 5071-5080.
17 768
18 769 Bos MP, Tefsen B, Geurtsen J & Tommassen J (2004) Identification of an outer
19 770 membrane protein required for the transport of lipopolysaccharide to the bacterial cell
20 771 surface. *Proceedings of the National Academy of Sciences of the United States of America*
21 772 **101**: 9417-9422.
22 773
23 774 Braun V & Rehn K (1969) Chemical characterization, spatial distribution and function of
24 775 a lipoprotein (murein-lipoprotein) of the *E. coli* cell wall. *European journal of*
25 776 *biochemistry / FEBS* **10**: 426-438.
26 777
27 778 Braun V & Bosch V (1972) Sequence of the murein-lipoprotein and the attachment site
28 779 of the lipid. *European journal of biochemistry / FEBS* **28**: 51-69.
29 780
30 781 Brülle JK, Tschumi A & Sander P (2013) Lipoproteins of slow-growing *Mycobacteria*
31 782 carry three fatty acids and are N-acylated by apolipoprotein N-acyltransferase
32 783 BCG_2070c. *BMC Microbiol* **13**: 223.
33 784
34 785 Brülle JK, Grau T, Tschumi A, Auchli Y, Burri R, Polsfuss S, Keller PM, Hunziker P &
35 786 Sander P (2010) Cloning, expression and characterization of *Mycobacterium tuberculosis*
36 787 lipoprotein LprF. *Biochem Biophys Res Comm* **391**: 679-684.
37 788
38 789 Bubeck-Wardenburg J, Williams WA & Missiakas D (2006) Host defenses against
39 790 *Staphylococcus aureus* infection require recognition of bacterial lipoproteins. *Proc Natl*
40 791 *Acad Sci U S A* **103**: 13831-13836.
41 792
42 793 Buddelmeijer N & Young R (2010) The essential *Escherichia coli* Apolipoprotein N-
43 794 acyltransferase (Lnt) exists as an extracytoplasmic thioester acyl-enzyme intermediate.
44 795 *Biochemistry* **49**: 341-346.
45 796
46 797 Cain JA, Solis N & Cordwell SJ (2014) Beyond gene expression: the impact of protein
47 798 post-translational modifications in bacteria. *Journal of proteomics* **97**: 265-286.
48 799
49 800 Chatzi KE, Sardis MF, Economou A & Karamanou S (2014) SecA-mediated targeting and
50 801 translocation of secretory proteins. *Biochimica et biophysica acta* **1843**: 1466-1474.
51 802
52
53
54
55
56
57
58
59
60

- 1
2
3 803 Chimalakonda G, Ruiz N, Chng SS, Garner RA, Kahne D & Silhavy TJ (2011) Lipoprotein
4 804 LptE is required for the assembly of LptD by the beta-barrel assembly machine in the
5 805 outer membrane of *Escherichia coli*. *Proceedings of the National Academy of Sciences of*
6 806 *the United States of America* **108**: 2492-2497.
7 807
8 808 Chimalapati S, Cohen JM, Camberlein E, MacDonald N, Durmort C, Vernet T, Hermans
9 809 PW, Mitchell T & Brown JS (2012) Effects of deletion of the *Streptococcus pneumoniae*
10 810 lipoprotein diacylglyceryl transferase gene lgt on ABC transporter function and on
11 811 growth in vivo. *PLoS One* **7**: e41393.
12 812
13 813 Chng SS, Ruiz N, Chimalakonda G, Silhavy TJ & Kahne D (2010) Characterization of the
14 814 two-protein complex in *Escherichia coli* responsible for lipopolysaccharide assembly at
15 815 the outer membrane. *Proceedings of the National Academy of Sciences of the United States*
16 816 *of America* **107**: 5363-5368.
17 817
18 818 Choi D-S, Yamada H, Mizuno T & Mizushima S (1986) Trimeric structure and localization
19 819 of the major lipoprotein in the cell surface of *Escherichia coli*. *J Biol Chem* **261**: 8953-
20 820 8957.
21 821
22 822 Cooper CL, Hsu L, Jackowski S & Rock CO (1989) 2-Acylglycerolphosphoethanolamine
23 823 acyltransferase/acyl-acyl carrier protein synthetase is a membrane-associated acyl
24 824 carrier protein binding protein. *The Journal of biological chemistry* **264**: 7384-7389.
25 825
26 826 Cordova-Davalos LE, Espitia C, Gonzalez-Ceron G, Arreguin-Espinosa R, Soberon-Chavez
27 827 G & Servin-Gonzalez L (2014) Lipoprotein N-acyl transferase (Lnt1) is dispensable for
28 828 protein O-mannosylation by *Streptomyces coelicolor*. *FEMS microbiology letters* **350**:
29 829 72-82.
30 830
31 831 Cornelis P, Bouia A, Belarbi A, Guyonvarch A, Kammerer B, Hannaert V & Hubert JC
32 832 (1989) Cloning and analysis of the gene for the major outer membrane lipoprotein from
33 833 *Pseudomonas aeruginosa*. *Molecular microbiology* **3**: 421-428.
34 834
35 835 Cornelis P, Cote-Sierra J, Lim Jr A, *et al.* (1996) Development of new cloning vectors for
36 836 the production of immunogenic outer membrane fusion proteins in *Escherichia coli*.
37 837 *Bio/Technol* **14**: 203-208.
38 838
39 839 Coutte L, Willery E, Antoine R, Drobecq H, Loch C & Jacob-Dubuisson F (2003) Surface
40 840 anchoring of bacterial subtilisin important for maturation function. *Mol Microbiol* **49**:
41 841 529-539.
42 842
43 843 Coutte L, Alonso S, Reveneau N, Willery E, Quatannens B, Loch C & Jacob-Dubuisson F
44 844 (2003) Role of adhesin release for mucosal colonization by a bacterial pathogen. *The*
45 845 *Journal of experimental medicine* **197**: 735-742.
46 846
47 847 Cowles CE, Li Y, Semmelhack MF, Cristea IM & Silhavy TJ (2011) The free and bound
48 848 forms of Lpp occupy distinct subcellular locations in *Escherichia coli*. *Molecular*
49 849 *microbiology* **79**: 1168-1181.
50 850
51
52
53
54
55
56
57
58
59
60

- 1
2
3 851 Cronan JE, Jr. & Rock CO (1996) Biosynthesis of membrane lipids. *Escherichia coli and*
4 852 *Salmonella: molecular and cellular biology*,(Neidhardt FC, ed.) p.^pp. ASM, Washington
5 853 D.C.
6 854
7 855 Das S, Kanamoto T, Ge X, Xu P, Unoki T, Munro CL & Kitten T (2009) Contribution of
8 856 lipoproteins and lipoprotein processing to endocarditis virulence in *Streptococcus*
9 857 *sanguinis*. *J Bacteriol* **191**: 4166-4179.
10 858
11 859 De Bona P, Deshmukh L, Gorbatyuk V, Vinogradova O & Kendall DA (2012) Structural
12 860 studies of a signal peptide in complex with signal peptidase I cytoplasmic domain: the
13 861 stabilizing effect of membrane-mimetics on the acquired fold. *Proteins* **80**: 807-817.
14 862
15 863 De Greeff A, Hamilton A, Sutcliffe IC, Buys H, Van Alphen L & Smith HE (2003)
16 864 Lipoprotein signal peptidase of *Streptococcus suis* serotype 2. *Microbiology (Reading,*
17 865 *England)* **149**: 1399-1407.
18 866
19 867 Denham EL, Ward PN & Leigh JA (2009) In the absence of Lgt, lipoproteins are shed
20 868 from *Streptococcus uberis* independently of Lsp. *Microbiology (Reading, England)* **155**:
21 869 134-141.
22 870
23 871 Dev IK, Harvey RJ & Ray PH (1985) Inhibition of prolipoprotein signal peptidase by
24 872 globomycin. *J Biol Chem* **260**: 5891-5894.
25 873
26 874 Dietrich LE & Ungermann C (2004) On the mechanism of protein palmitoylation. *EMBO*
27 875 *reports* **5**: 1053-1057.
28 876
29 877 Doerrler WT & Raetz CR (2002) ATPase activity of the MsbA lipid flippase of *Escherichia*
30 878 *coli*. *The Journal of biological chemistry* **277**: 36697-36705.
31 879
32 880 Doerrler WT, Reedy MC & Raetz CRH (2001) An *Escherichia coli* mutant defective in
33 881 lipid export. *The Journal of biological chemistry* **276**: 11461-11464.
34 882
35 883 Doerrler WT, Gibbons HS & Raetz CR (2004) MsbA-dependent translocation of lipids
36 884 across the inner membrane of *Escherichia coli*. *The Journal of biological chemistry* **279**:
37 885 45102-45109.
38 886
39 887 Doi O & Nojima S (1975) Lysophospholipase of *Escherichia coli*. *The Journal of biological*
40 888 *chemistry* **250**: 5208-5214.
41 889
42 890 Doshi R & van Veen HW (2013) Substrate binding stabilizes a pre-translocation
43 891 intermediate in the ATP-binding cassette transport protein MsbA. *The Journal of*
44 892 *biological chemistry* **288**: 21638-21647.
45 893
46 894 Erez E, Fass D & Bibi E (2009) How intramembrane proteases bury hydrolytic reactions
47 895 in the membrane. *Nature* **459**: 371-378.
48 896
49 897 Espitia C & Mancilla R (1989) Identification, isolation and partial characterization of
50 898 *Mycobacterium tuberculosis* glycoprotein antigens. *Clinical and experimental*
51 899 *immunology* **77**: 378-383.
52
53
54
55
56
57
58
59
60

- 1
2
3 900
4 901 Fischer W (1994) Lipoteichoic acid and lipids in the membrane of *Staphylococcus*
5 902 *aureus*. *Medical microbiology and immunology* **183**: 61-76.
6 903
7 904 Freinkman E, Chng SS & Kahne D (2011) The complex that inserts lipopolysaccharide
8 905 into the bacterial outer membrane forms a two-protein plug-and-barrel. *Proceedings of*
9 906 *the National Academy of Sciences of the United States of America* **108**: 2486-2491.
10 907
11 908 Fukuda A, Matsuyama S-I, Hara T, Nakayama J, Nagasawa H & Tokuda H (2002)
12 909 Aminoacylation of the N-terminal cysteine is essential for Lol-dependent release of
13 910 lipoproteins from membranes but does not depend on lipoprotein sorting signals. *J Biol*
14 911 *Chem* **277**: 43512-43518.
15 912
16 913 Gan K, Gupta SD, Sankaran K, Schmid MB & Wu HC (1993) Isolation and characterization
17 914 of a temperature-sensitive mutant of *Salmonella typhimurium* defective in
18 915 prolipoprotein modification. *J Biol Chem* **268**: 16544-16550.
19 916
20 917 Gan K, Sankaran K, Williams MG, Aldea M, Rudd KE, Kushner SR & Wu HC (1995) The
21 918 *umpA* gene of *Escherichia coli* encodes phosphatidylglycerol: prolipoprotein
22 919 diacylglyceryl transferase (*Igt*) and regulates thymidylate synthase levels through
23 920 translational coupling. *J Bacteriol* **177**: 1879-1882.
24 921
25 922 Gibbons HS, Wolschendorf F, Abshire M, Niederweis M & Braunstein M (2007)
26 923 Identification of two *Mycobacterium smegmatis* lipoproteins exported by a SecA2-
27 924 dependent pathway. *Journal of bacteriology* **189**: 5090-5100.
28 925
29 926 Gibson KJ, Eggeling L, Maughan WN, Krumbach K, Gurcha SS, Nigou J, Puzo G, Sahm H &
30 927 Besra GS (2003) Disruption of Cg-Ppm1, a polyprenyl monophosphomannose synthase,
31 928 and the generation of lipoglycan-less mutants in *Corynebacterium glutamicum*. *J Biol*
32 929 *Chem* **278**: 40842-40850.
33 930
34 931 Gimenez MI, Dilks K & Pohlschroder M (2007) *Haloferax volcanii* twin-arginine
35 932 translocation substates include secreted soluble, C-terminally anchored and
36 933 lipoproteins. *Molecular microbiology* **66**: 1597-1606.
37 934
38 935 Gonzalez-Zamorano M, Mendoza-Hernandez G, Xolalpa W, Parada C, Vallecillo AJ, Bigi F
39 936 & Espitia C (2009) *Mycobacterium tuberculosis* glycoproteomics based on ConA-lectin
40 937 affinity capture of mannosylated proteins. *Journal of proteome research* **8**: 721-733.
41 938
42 939 Gullon S, Arranz EI & Mellado RP (2013) Transcriptional characterisation of the negative
43 940 effect exerted by a deficiency in type II signal peptidase on extracellular protein
44 941 secretion in *Streptomyces lividans*. *Applied microbiology and biotechnology* **97**: 10069-
45 942 10080.
46 943
47 944 Guo MS, Updegrave TB, Gogol EB, Shabalina SA, Gross CA & Storz G (2014) MicL, a new
48 945 sigmaE-dependent sRNA, combats envelope stress by repressing synthesis of Lpp, the
49 946 major outer membrane lipoprotein. *Genes & development* **28**: 1620-1634.
50 947
51
52
53
54
55
56
57
58
59
60

- 1
2
3 948 Gupta SD & Wu HC (1991) Identification and subcellular localization of apolipoprotein
4 949 N-acyltransferase in *Escherichia coli*. *FEMS Microbiol Lett* **78**: 37-42.
5 950
6 951 Gupta SD, Dowham W & Wu HC (1991) Phosphatidylethanolamine is not essential for
7 952 the N-acylation of apolipoprotein in *Escherichia coli*. *J Biol Chem* **266**: 9983-9986.
8 953
9 954 Gupta SD, Gan K, Schmid MB & Wu HC (1993) Characterization of a temperature-
10 955 sensitive mutant of *Salmonella typhimurium* defective in apolipoprotein N-
11 956 acyltransferase. *J Biol Chem* **268**: 16551-16556.
12 957
13 958 Gurcha SS, Baulard AR, Kremer L, Loch C, Moody DB, Muhlecker W, Costello CE, Crick
14 959 DC, Brennan PJ & Besra GS (2002) Ppm1, a novel polyprenol monophosphomannose
15 960 synthase from *Mycobacterium tuberculosis*. *Biochem J* **365**: 441-450.
16 961
17 962 Haake DA (2000) Spirochaetal lipoproteins and pathogenesis. *Microbiology (Reading,*
18 963 *England)* **146 (Pt 7)**: 1491-1504.
19 964
20 965 Hamilton A, Robinson C, Sutcliffe IC, Slater J, Maskell DJ, Davis-Poynter N, Smith K,
21 966 Waller A & Harrington DJ (2006) Mutation of the maturase lipoprotein attenuates the
22 967 virulence of *Streptococcus equi* to a greater extent than does loss of general lipoprotein
23 968 lipidation. *Infect Immun* **74**: 6907-6919.
24 969
25 970 Hantke K & Braun V (1973) Covalent binding of lipid to protein. Diglyceride and amide-
26 971 linked fatty acid at the N-terminal end of the murein-lipoprotein of the *Escherichia coli*
27 972 outer membrane. *Eur J Biochem* **34**: 284-296.
28 973
29 974 Harvat E, Zhang Y-M, Tran C, Zhang Z, Frank M, Rock C & Saier MJ (2005)
30 975 Lysophospholipid flipping across the *Escherichia coli* inner membrane catalyzed by a
31 976 transporter (LplT) belonging to the major facilitator superfamily. *J Biol Chem* **280**:
32 977 12028-12034.
33 978
34 979 Hayashi S & Wu HC (1983) Biosynthesis of *Bacillus licheniformis* penicillinase in
35 980 *Escherichia coli* and in *Bacillus subtilis*. *Journal of bacteriology* **156**: 773-777.
36 981
37 982 Hayashi S & Wu HC (1985) Accumulation of prolipoprotein in *Escherichia coli* mutants
38 983 defective in protein secretion. *Journal of bacteriology* **164**: 949-954.
39 984
40 985 Hayashi S, Chang SY, Chang S, Giam CZ & Wu HC (1985) Modification and processing of
41 986 internalized signal sequences of prolipoprotein in *Escherichia coli* and in *Bacillus subtilis*.
42 987 *J Biol Chem* **260**: 5753-5759.
43 988
44 989 Henneke P, Dramsi S, Mancuso G, *et al.* (2008) Lipoproteins are critical TLR2 activating
45 990 toxins in group B streptococcal sepsis. *J Immunol* **180**: 6149-6158.
46 991
47 992 Herrmann JL, O'Gaora P, Gallagher A, Thole JER & Young DB (1996) Bacterial
48 993 glycoproteins: a link between glycosylation and proteolytic cleavage of a 19 kDa antigen
49 994 from *Mycobacterium tuberculosis*. *EMBO J* **15**: 3547-3554.
50 995
51
52
53
54
55
56
57
58
59
60

- 1
2
3 996 Hiemstra H, de Hoop MJ, Inouye M & Witholt B (1986) Induction kinetics and cell surface
4 997 distribution of *Escherichia coli* lipoprotein under *lac* promoter control. *Journal of*
5 998 *bacteriology* **168**: 140-151.
6 999
7 1000 Hiemstra H, Nanninga N, Woldringh CL, Inouye M & Witholt B (1987) Distribution of
8 1001 newly synthesized lipoprotein over the outer membrane and the peptidoglycan sacculus
9 1002 of an *Escherichia coli* lac-lpp strain. *Journal of bacteriology* **169**: 5434-5444.
10 1003
11 1004 Hillmann F, Argentini M & Buddelmeijer N (2011) Kinetics and phospholipid specificity
12 1005 of apolipoprotein N-acyltransferase. *J Biol Chem* **286**: 27936-27946.
13 1006
14 1007 Hirota Y, Suzuki H, Nishimura Y & Yasuda S (1977) On the process of cellular division in
15 1008 *Escherichia coli*: A mutant of *E. coli* lacking a murein-lipoprotein. *Proc Natl Acad Sci USA*
16 1009 **74**: 1417-1420.
17 1010
18 1011 Hizukuri Y, Oda T, Tabata S, Tamura-Kawakami K, Oi R, Sato M, Takagi J, Akiyama Y &
19 1012 Nogi T (2014) A structure-based model of substrate discrimination by a noncanonical
20 1013 PDZ tandem in the intramembrane-cleaving protease RseP. *Structure* **22**: 326-336.
21 1014
22 1015 Homma H & Nojima S (1982) Synthesis of various phospholipids from 2-acyl
23 1016 lysophospholipids by *Escherichia coli* extract. *Journal of biochemistry* **91**: 1103-1110.
24 1017
25 1018 Hsu L, Jackowski S & Rock C (1991) Isolation and characterization of *Escherichia coli* K-
26 1019 12 mutants lacking both 2-acylglycerophosphoethanolamine acyltransferase and acyl-
27 1020 acyl carrier protein synthetase activity. *J Biol Chem* **266**: 13783-13788.
28 1021
29 1022 Hu J, Xue Y, Lee S & Ha Y (2011) The crystal structure of GXGD membrane protease FlaK.
30 1023 *Nature* **475**: 528-531.
31 1024
32 1025 Hussain M, Ichihara S & Mizushima S (1980) Accumulation of glyceride-containing
33 1026 precursor of the outer membrane lipoprotein in the cytoplasmic membrane of
34 1027 *Escherichia coli* treated with globomycin. *J Biol Chem* **255**: 3707-3712.
35 1028
36 1029 Hussain M, Ichihara S & Mizushima S (1982) Mechanism of signal peptide cleavage in the
37 1030 biosynthesis of the major lipoprotein of the *Escherichia coli* outer membrane. *J Biol Chem*
38 1031 **257**: 5177-5182.
39 1032
40 1033 Ichihara S, Suzuki T, Suzuki M & Mizushima S (1986) Molecular cloning and sequencing
41 1034 of the *sppA* gene and characterization of the encoded protease IV, a signal peptide
42 1035 peptidase, of *Escherichia coli*. *The Journal of biological chemistry* **261**: 9405-9411.
43 1036
44 1037 Inouye M, Shaw J & Shen C (1972) The assembly of a structural lipoprotein in the
45 1038 envelope of *Escherichia coli*. *The Journal of biological chemistry* **247**: 8154-8159.
46 1039
47 1040 Inouye S, Vlasuk GP, Hsiung H & Inouye M (1984) Effects of mutations at glycine
48 1041 residues in the hydrophobic region of the *Escherichia coli* prolipoprotein signal peptide
49 1042 on the secretion across the membrane. *The Journal of biological chemistry* **259**: 3729-
50 1043 3733.
51 1044
52
53
54
55
56
57
58
59
60

- 1
2
3 1045 Inouye S, Wang S, Sekizawa J, Haleboua S & Inouye M (1977) Amino acid sequence for
4 1046 the peptide extension on the prolipoprotein of the Escherichia coli outer membrane.
5 1047 *Proceedings of the National Academy of Sciences of the United States of America* **74**: 1004-
6 1048 1008.
7 1049
8 1050 Inukai M, Takeuchi K, Shimizu K & Arai M (1978) Mechanism of action of globomycin. *J*
9 1051 *Antibiot* **31**: 1203-1205.
10 1052
11 1053 Inukai M, Enokita R, Torikata A & Nakahara M (1978) Globomycin, a new peptide
12 1054 antibiotic with spheroplast-forming activity. I. Taxonomy of producing organisms and
13 1055 fermentation. *J Antibiot* **31**: 410-420.
14 1056
15 1057 Inukai M, Nakajima M, Osawa M, Haneishi T & Arai M (1978) Globomycin, a new peptide
16 1058 antibiotic with spheroplast-forming activity. II Isolation and physico-chemical and
17 1059 biological characterization. *J Antibiot* **31**: 421-425.
18 1060
19 1061 Ito H, Ura A, Oyamada Y, Yoshida H, Yamagishi J, Narita S, Matsuyama S & Tokuda H
20 1062 (2007) A new screening method to identify inhibitors of the Lol (localization of
21 1063 lipoproteins) system, a novel antibacterial target. *Microbiology and immunology* **51**: 263-
22 1064 270.
23 1065
24 1066 Ivanov SS, Charron G, Hang HC & Roy CR (2010) Lipidation by the host
25 1067 prenyltransferase machinery facilitates membrane localization of Legionella
26 1068 pneumophila effector proteins. *The Journal of biological chemistry* **285**: 34686-34698.
27 1069
28 1070 Jackowski S & Rock CO (1986) Transfer of fatty acids from the 1-position of
29 1071 phosphatidylethanolamine to the major outer membrane lipoprotein of *Escherichia coli*.
30 1072 *J Biol Chem* **261**: 11328-11333.
31 1073
32 1074 Jackowski S, Jackson PD & Rock CO (1994) Sequence and function of the aas gene in
33 1075 *Escherichia coli*. *The Journal of biological chemistry* **269**: 2921-2928.
34 1076
35 1077 Jan G, Fontenelle C, Le Henaff M & Wroblewski H (1995) Acylation and immunological
36 1078 properties of Mycoplasma gallisepticum membrane proteins. *Research in microbiology*
37 1079 **146**: 739-750.
38 1080
39 1081 Jin MS, Kim SE, Heo JY, Lee ME, Kim HM, Paik SG, Lee H & Lee JO (2007) Crystal structure
40 1082 of the TLR1-TLR2 heterodimer induced by binding of a tri-acylated lipopeptide. *Cell*
41 1083 **130**: 1071-1082.
42 1084
43 1085 Kanehara K, Akiyama Y & Ito K (2001) Characterization of the yaeL gene product and its
44 1086 S2P-protease motifs in *Escherichia coli*. *Gene* **281**: 71-79.
45 1087
46 1088 Kang JY, Nan X, Jin MS, Youn SJ, Ryu YH, Mah S, Han SH, Lee H, Paik SG & Lee JO (2009)
47 1089 Recognition of lipopeptide patterns by Toll-like receptor 2-Toll-like receptor 6
48 1090 heterodimer. *Immunity* **31**: 873-884.
49 1091
50
51
52
53
54
55
56
57
58
59
60

- 1
2
3 1092 Kiho T, Nakayama M, Yasuda K, Miyakoshi S, Inukai M & Kogen H (2003) Synthesis and
4 1093 antimicrobial activity of novel globomycin analogues. *Bioorg Med Chem Lett* **13**: 2315-
5 1094 2318.
6 1095
7 1096 Kiho T, Nakayama M, Yasuda K, Miyakoshi S, Inukai M & Kogen H (2004) Structure-
8 1097 activity relationships of globomycin analogues as antibiotics. *Bioorganic & medicinal*
9 1098 *chemistry* **12**: 337-361.
10 1099
11 1100 Kim AC, Oliver DC & Paetzel M (2008) Crystal structure of a bacterial signal Peptide
12 1101 peptidase. *Journal of molecular biology* **376**: 352-366.
13 1102
14 1103 Kovacs-Simon A, Titball RW & Mitchell SL (2010) Lipoproteins of bacterial pathogens.
15 1104 *Infect Immun* **79**: 548-561.
16 1105
17 1106 Kuo DW, Chan HK, Wilson CJ, Griffin PR, Williams H & Knight WB (1993) Escherichia coli
18 1107 leader peptidase: production of an active form lacking a requirement for detergent and
19 1108 development of peptide substrates. *Archives of biochemistry and biophysics* **303**: 274-
20 1109 280.
21 1110
22 1111 Kurokawa K, Kim MS, Ichikawa R, Ryu KH, Dohmae N, Nakayama H & Lee BL (2012)
23 1112 Environment-mediated accumulation of diacyl lipoproteins over their triacyl
24 1113 counterpart in *Staphylococcus aureus*. *J Bacteriol* **194**: 3299-3306.
25 1114
26 1115 Kurokawa K, Ryu KH, Ichikawa R, *et al.* (2012) Novel bacterial lipoprotein structures
27 1116 conserved in low-GC content Gram-positive bacteria are recognized by Toll-like receptor
28 1117 2. *J Biol Chem* **287**: 13170-13181.
29 1118
30 1119 Kurokawa K, Lee H., Roh K.-B., Asanuma M., Kim Y S, Nakayama H, Shiratsuchi A., choi Y,
31 1120 Takeuchi O, Kang H J, Dohmae N, Nakanishi Y, Akira S, Sekimizu K, Lee B L (2009) The
32 1121 triacylated ATP binding cluster transporter substrate-binding lipoprotein of
33 1122 *Staphylococcus aureus* functions as a native ligand for Toll-like receptor 2. *J Biol Chem*
34 1123 **284**: 8406-8411.
35 1124
36 1125 Lai J-S, Philbrick WM & Wu HC (1980) Acyl moieties in phospholipids are the precursors
37 1126 for the fatty acids in murein lipoprotein in *Escherichia coli*. *J Biol Chem* **255**: 5384-5387.
38 1127
39 1128 LaPointe CF & Taylor RK (2000) The type 4 prepilin peptidases comprise a novel family
40 1129 of aspartic acid proteases. *The Journal of biological chemistry* **275**: 1502-1510.
41 1130
42 1131 Leskelä S, Wahlström E, V.P. K & Sarvas M (1999) Lipid modification of prelipoproteins
43 1132 is dispensable for growth but essential for efficient protein secretion in *Bacillus subtilis*:
44 1133 characterization of the *Igt* gene. *Mol Microbiol* **31**: 1075-1085.
45 1134
46 1135 Lin JJ, Kanazawa H, Ozols J & Wu HC (1978) An *Escherichia coli* mutant with an amino
47 1136 acid alteration within the signal sequence of outer membrane prolipoprotein. *Proc Natl*
48 1137 *Acad Sci USA* **75**: 489-495.
49 1138
50 1139 Lin JJC, Giam CZ & Wu HC (1980) Assembly of the outer membrane lipoprotein in
51 1140 *Escherichia coli*. *The Journal of biological chemistry* **255**: 807-811.
52
53
54
55
56
57
58
59
60

- 1
2
3 1141
4 1142 Lu P, Bai XC, Ma D, *et al.* (2014) Three-dimensional structure of human gamma-
5 1143 secretase. *Nature* **512**: 166-170.
6 1144
7 1145 Machata S, Tchatalbachev S, Mohamed W, Jansch L, Hain T & Chakraborty T (2008)
8 1146 Lipoproteins of *Listeria monocytogenes* are critical for virulence and TLR2-mediated
9 1147 immune activation. *J Immunol* **181**: 2028-2035.
10 1148
11 1149 Madan Babu M & Sankaran K (2002) DOLOP--database of bacterial lipoproteins.
12 1150 *Bioinformatics (Oxford, England)* **18**: 641-643.
13 1151
14 1152 Magnet S, Dubost L, Marie A, Arthur M & Gutmann L (2008) Identification of the L,D-
15 1153 transpeptidases for peptidoglycan cross-linking in *Escherichia coli*. *Journal of*
16 1154 *bacteriology* **190**: 4782-4785.
17 1155
18 1156 Magnet S, Arbeloa A, Mainardi JL, *et al.* (2007) Specificity of L,D-transpeptidases from
19 1157 gram-positive bacteria producing different peptidoglycan chemotypes. *The Journal of*
20 1158 *biological chemistry* **282**: 13151-13159.
21 1159
22 1160 Mainardi JL, Fourgeaud M, Hugonnet JE, Dubost L, Brouard JP, Ouazzani J, Rice LB,
23 1161 Gutmann L & Arthur M (2005) A novel peptidoglycan cross-linking enzyme for a beta-
24 1162 lactam-resistant transpeptidation pathway. *The Journal of biological chemistry* **280**:
25 1163 38146-38152.
26 1164
27 1165 Malinverni JC, Werner J, Kim S, Sklar JG, Kahne D, Misra R & Silhavy TJ (2006) YfiO
28 1166 stabilizes the YaeT complex and is essential for outer membrane protein assembly in
29 1167 *Escherichia coli*. *Molecular microbiology* **61**: 151-164.
30 1168
31 1169 Malojcic G, Andres D, Grabowicz M, George AH, Ruiz N, Silhavy TJ & Kahne D (2014) LptE
32 1170 binds to and alters the physical state of LPS to catalyze its assembly at the cell surface.
33 1171 *Proceedings of the National Academy of Sciences of the United States of America* **111**:
34 1172 9467-9472.
35 1173
36 1174 Michel LV, Snyder J, Schmidt R, Milillo J, Grimaldi K, Kalmeta B, Khan MN, Sharma S,
37 1175 Wright LK & Pichichero ME (2013) Dual orientation of the outer membrane lipoprotein
38 1176 P6 of nontypeable haemophilus influenzae. *Journal of bacteriology* **195**: 3252-3259.
39 1177
40 1178 Mitchell DA, Mitchell G, Ling Y, Budde C & Deschenes RJ (2010) Mutational analysis of
41 1179 *Saccharomyces cerevisiae* Erf2 reveals a two-step reaction mechanism for protein
42 1180 palmitoylation by DHHC enzymes. *The Journal of biological chemistry* **285**: 38104-
43 1181 38114.
44 1182
45 1183 Mitchell DA, Hamel LD, Ishizuka K, Mitchell G, Schaefer LM & Deschenes RJ (2012) The
46 1184 Erf4 subunit of the yeast Ras palmitoyl acyltransferase is required for stability of the
47 1185 Acyl-Erf2 intermediate and palmitoyl transfer to a Ras2 substrate. *The Journal of*
48 1186 *biological chemistry* **287**: 34337-34348.
49 1187
50
51
52
53
54
55
56
57
58
59
60

- 1
2
3 1188 Mizuno T & Kageyama M (1979) Isolation and characterization of major outer
4 1189 membrane proteins of *Pseudomonas aeruginosa* strain PAO with special reference to
5 1190 peptidoglycan-associated protein. *Journal of biochemistry* **86**: 979-989.
6 1191
7 1192 Mohiman N, Argentini M, Batt SM, Cornu D, Masi M, Eggeling L, Besra G & Bayan N
8 1193 (2012) The ppm operon is essential for acylation and glycosylation of lipoproteins in
9 1194 *Corynebacterium glutamicum*. *PLoS One* **7**: e46225.
10 1195
11 1196 Munoa FJ, Miller KW, Beers R, Graham M & Wu HC (1991) Membrane topology of
12 1197 *Escherichia coli* prolipoprotein signal peptidase (signal peptidase II). *J Biol Chem* **266**:
13 1198 17667-17672.
14 1199
15 1200 Nakajima M, Inukai M, Haneishi T, Terahara A & Arai M (1978) Globomycin, a new
16 1201 peptide antibiotic with spheroplast-forming activity. III. Structural determination of
17 1202 globomycin. *J Antibiot* **31**: 426-432.
18 1203
19 1204 Nakayama H, Kurokawa K & Lee BL (2012) Lipoproteins in bacteria: structures and
20 1205 biosynthetic pathways. *FEBS J* **279**: 4247-4268.
21 1206
22 1207 Narita S & Tokuda H (2011) Overexpression of LolCDE allows deletion of the *Escherichia*
23 1208 *coli* gene encoding apolipoprotein N-acyltransferase. *J Bacteriol* **193**: 4832-4840.
24 1209
25 1210 Novak P & Dev IK (1988) Degradation of a signal peptide by protease IV and
26 1211 oligopeptidase A. *Journal of bacteriology* **170**: 5067-5075.
27 1212
28 1213 Okuda S & Tokuda H (2009) Model of mouth-to-mouth transfer of bacterial lipoproteins
29 1214 through inner membrane LolC, periplasmic LolA, and outer membrane LolB. *Proceedings*
30 1215 *of the National Academy of Sciences of the United States of America* **106**: 5877-5882.
31 1216
32 1217 Okuda S & Tokuda H (2011) Lipoprotein sorting in bacteria. *Annual review of*
33 1218 *microbiology* **65**: 239-259.
34 1219
35 1220 Okugawa S, Moayeri M, Pomerantsev AP, Sastalla I, Crown D, Gupta PK & Leppla SH
36 1221 (2012) Lipoprotein biosynthesis by prolipoprotein diacylglyceryl transferase is required
37 1222 for efficient spore germination and full virulence of *Bacillus anthracis*. *Mol Microbiol* **83**:
38 1223 96-109.
39 1224
40 1225 Okuyama H, Kankura T & Nojima S (1967) Positional distribution of fatty acids in
41 1226 phospholipids from Mycobacteria. *Journal of biochemistry* **61**: 732-737.
42 1227
43 1228 Pacaud M (1982) Purification and characterization of two novel proteolytic enzymes in
44 1229 membranes of *Escherichia coli*. Protease IV and protease V. *The Journal of biological*
45 1230 *chemistry* **257**: 4333-4339.
46 1231
47 1232 Pacaud M (1982) Identification and localization of two membrane-bound esterases from
48 1233 *Escherichia coli*. *Journal of bacteriology* **149**: 6-14.
49 1234
50 1235 Paetzl M (2014) Structure and mechanism of *Escherichia coli* type I signal peptidase.
51 1236 *Biochimica et biophysica acta* **1843**: 1497-1508.
52
53
54
55
56
57
58
59
60

- 1
2
3 1237
4 1238 Paetzel M, Karla A, Strynadka NC & Dalbey RE (2002) Signal peptidases. *Chem Rev* **102**:
5 1239 4549-4580.
6 1240
7 1241 Pailler J, Aucher W, Pires M & Buddelmeijer N (2012)
8 1242 Phosphatidylglycerol::prolipoprotein diacylglyceryltransferase (Lgt) of *E. coli* has seven
9 1243 transmembrane segments and its essential residues are embedded in the membrane. *J*
10 1244 *Bacteriol* **194**: 2142-2151.
11 1245
12 1246 Paradis-Bleau C, Markovski M, Uehara T, Lupoli TJ, Walker S, Kahne DE & Bernhardt TG
13 1247 (2010) Lipoprotein cofactors located in the outer membrane activate bacterial cell wall
14 1248 polymerases. *Cell* **143**: 1110-1120.
15 1249
16 1250 Parsons JB & Rock CO (2013) Bacterial lipids: metabolism and membrane homeostasis.
17 1251 *Progress in lipid research* **52**: 249-276.
18 1252
19 1253 Patel R, Smith SM & Robinson C (2014) Protein transport by the bacterial Tat pathway.
20 1254 *Biochimica et biophysica acta* **1843**: 1620-1628.
21 1255
22 1256 Pathania R, Zlitni S, Barker C, Das R, Gerritsma DA, Lebert J, Awuah E, Melacini G,
23 1257 Capretta FA & Brown ED (2009) Chemical genomics in *Escherichia coli* identifies an
24 1258 inhibitor of bacterial lipoprotein targeting. *Nature chemical biology* **5**: 849-856.
25 1259
26 1260 Petit CM, Brown JR, Ingraham K, Bryant AP & Holmes DJ (2001) Lipid modification of
27 1261 prelipoproteins is dispensable for growth *in vitro* but essential for virulence in
28 1262 *Streptococcus pneumoniae*. *FEMS Microbiol Lett* **200**: 229-233.
29 1263
30 1264 Pollitt S, Inouye S & Inouye M (1985) A functional prelipoprotein signal peptide with a
31 1265 deletion of four amino acid residues from the hydrophobic region. *The Journal of*
32 1266 *biological chemistry* **260**: 7965-7969.
33 1267
34 1268 Pragai Z, Tjalsma H, Bolhuis A, van Dijl JM, Venema G & Bron S (1997) The signal
35 1269 peptidase II (*Isp*) gene of *Bacillus subtilis*. *Microbiol* **143**: 1327-1333.
36 1270
37 1271 Pugsley AP, Chapon C & Schwartz M (1986) Extracellular pullulanase of *Klebsiella*
38 1272 *pneumoniae* is a lipoprotein. *Journal of bacteriology* **166**: 1083-1088.
39 1273
40 1274 Qi HY, Sankaran K, Gan K & Wu HC (1995) Structure-function relationship of bacterial
41 1275 prelipoprotein diacylglyceryl transferase: functionally significant conserved regions. *J*
42 1276 *Bacteriol* **177**: 6820-6824.
43 1277
44 1278 Raetz CR (1986) Molecular genetics of membrane phospholipid synthesis. *Annual review*
45 1279 *of genetics* **20**: 253-295.
46 1280
47 1281 Rampini SK, Selchow P, Keller C, Ehlers S, Bottger EC & Sander P (2008) LspA
48 1282 inactivation in *Mycobacterium tuberculosis* results in attenuation without affecting
49 1283 phagosome maturation arrest. *Microbiology (Reading, England)* **154**: 2991-3001.
50 1284
51
52
53
54
55
56
57
58
59
60

- 1
2
3 1285 Rana AK, Singh A, Gurcha SS, Cox LR, Bhatt A & Besra GS (2012) Ppm1-encoded
4 1286 polyprenyl monophosphomannose synthase activity is essential for lipoglycan synthesis
5 1287 and survival in mycobacteria. *PLoS One* **7**: e48211.
6 1288
7 1289 Reglier-Poupet H, Frehel C, Dubail I, Beretti JL, Berche P, Charbit A & Raynaud C (2003)
8 1290 Maturation of lipoproteins by type II signal peptidase is required for phagosomal escape
9 1291 of *Listeria monocytogenes*. *J Biol Chem* **278**: 49469-49477.
10 1292
11 1293 Remans K, Pauwels K, van Ulsen P, Buts L, Cornelis P, Tommassen J, Savvides SN,
12 1294 Decanniere K & Van Gelder P (2010) Hydrophobic surface patches on LolA of
13 1295 *Pseudomonas aeruginosa* are essential for lipoprotein binding. *Journal of molecular*
14 1296 *biology* **401**: 921-930.
15 1297
16 1298 Robichon C, Vidal-Ingigliardi D & Pugsley AP (2005) Depletion of apolipoprotein N-
17 1299 acyltransferase causes mislocalization of outer membrane lipoproteins in *Escherichia*
18 1300 *coli*. *J Biol Chem* **280**: 974-983.
19 1301
20 1302 Rogers SD, Bhave MR, Mercer JFB, Camakaris J & Lee BTO (1991) Cloning and
21 1303 characterization of *cutE* a gene involved in copper transport in *Escherichia coli*. *J*
22 1304 *Bacteriol* **173**: 6742-6748.
23 1305
24 1306 Rosenberg E, Vaks B & Zuckerberg A (1973) Bactericidal action of an antibiotic
25 1307 produced by *Myxococcus xanthus*. *Antimicrobial agents and chemotherapy* **4**: 507-513.
26 1308
27 1309 Roussel-Jazede V, Grijpstra J, van Dam V, Tommassen J & van Ulsen P (2013) Lipidation
28 1310 of the autotransporter NalP of *Neisseria meningitidis* is required for its function in the
29 1311 release of cell-surface-exposed proteins. *Microbiology (Reading, England)* **159**: 286-295.
30 1312
31 1313 Ruiz N, Kahne D & Silhavy TJ (2009) Transport of lipopolysaccharide across the cell
32 1314 envelope: the long road of discovery. *Nature reviews* **7**: 677-683.
33 1315
34 1316 Saito A, Hizukuri Y, Matsuo E, Chiba S, Mori H, Nishimura O, Ito K & Akiyama Y (2011)
35 1317 Post-liberation cleavage of signal peptides is catalyzed by the site-2 protease (S2P) in
36 1318 bacteria. *Proc Natl Acad Sci U S A* **108**.
37 1319
38 1320 Sander P, Rezwan M, Walker B, *et al.* (2004) Lipoprotein processing is required for
39 1321 virulence of *Mycobacterium tuberculosis*. *Mol Microbiol* **52**: 1543-1552.
40 1322
41 1323 Sankaran K & Wu HC (1994) Lipid modification of bacterial prolipoprotein. Transfer of
42 1324 diacylglyceryl moiety from phosphatidylglycerol. *J Biol Chem* **269**: 19701-19706.
43 1325
44 1326 Sankaran K, Gan K, Rash B, Qi H-Y, Wu HC & Rick PD (1997) Roles of histidine-103 and
45 1327 tyrosine-235 in the function of the prelipoprotein diacylglyceryl transferase of
46 1328 *Escherichia coli*. *J Bacteriol* **179**: 2944-2948.
47 1329
48 1330 Sartain MJ & Belisle JT (2009) N-Terminal clustering of the O-glycosylation sites in the
49 1331 *Mycobacterium tuberculosis* lipoprotein SodC. *Glycobiology* **19**: 38-51.
50 1332
51
52
53
54
55
56
57
58
59
60

- 1
2
3 1333 Sassetti CM, Boyd DH & Rubin EJ (2003) Genes required for mycobacterial growth
4 1334 defined by high density mutagenesis. *Molecular microbiology* **48**: 77-84.
5 1335
6 1336 Selvan AT & Sankaran K (2008) Localization and characterization of prolipoprotein
7 1337 diacylglyceryl transferase (Lgt) critical in bacterial lipoprotein biosynthesis. *Biochimie*
8 1338 **90**: 1647-1655.
9 1339
10 1340 Serebryakova MV, Demina IA, Galyamina MA, Kondratov IG, Ladygina VG & Govorun VM
11 1341 (2011) The acylation state of surface lipoproteins of mollicute *Acholeplasma laidlawii*. *J*
12 1342 *Biol Chem* **286**: 22769-22776.
13 1343
14 1344 Shruthi H, Anand P, Murugan V & Sankaran K (2010) Twin arginine translocase pathway
15 1345 and fast-folding lipoprotein biosynthesis in *E. coli*: interesting implications and
16 1346 applications. *Molecular bioSystems* **6**: 999-1007.
17 1347
18 1348 Shu W, Liu J, Ji H & Lu M (2000) Core structure of the outer membrane lipoprotein from
19 1349 *Escherichia coli* at 1.9 Å resolution. *J Mol Biol* **299**: 1101-1112.
20 1350
21 1351 Siboo IR, Chaffin DO, Rubens CE & Sullam PM (2008) Characterization of the accessory
22 1352 Sec system of *Staphylococcus aureus*. *Journal of bacteriology* **190**: 6188-6196.
23 1353
24 1354 Stoll H, Dengjel J, Nerz C & Gotz F (2005) *Staphylococcus aureus* deficient in lipidation of
25 1355 prelipoproteins is attenuated in growth and immune activation. *Infect Immun* **73**: 2411-
26 1356 2423.
27 1357
28 1358 Storf S, Pfeiffer F, Dilks K, Chen ZQ, Imam S & Pohlschroder M (2010) Mutational and
29 1359 bioinformatic analysis of haloarchaeal lipobox-containing proteins. *Archaea* **2010**.
30 1360
31 1361 Strom MS & Lory S (1987) Mapping of export signals of *Pseudomonas aeruginosa* pilin
32 1362 with alkaline phosphatase fusions. *Journal of bacteriology* **169**: 3181-3188.
33 1363
34 1364 Sundaram S, Banerjee S & Sankaran K (2012) The first nonradioactive fluorescence
35 1365 assay for phosphatidylglycerol:prolipoprotein diacylglyceryl transferase that initiates
36 1366 bacterial lipoprotein biosynthesis. *Analytical biochemistry* **423**: 163-170.
37 1367
38 1368 Sutcliffe IC & Harrington DJ (2002) Pattern searches for the identification of putative
39 1369 lipoprotein genes in Gram-positive bacterial genomes. *Microbiology (Reading, England)*
40 1370 **148**: 2065-2077.
41 1371
42 1372 Suzuki H, Nishimura Y, Yasuda S, Nishimura A, Yamada M & Hirota Y (1978)
43 1373 Murein-lipoprotein of *Escherichia coli*: a protein involved in the stabilization of bacterial
44 1374 cell envelope. *Mol Gen Genet* **167**: 1-9.
45 1375
46 1376 Takeda K, Miyatake H, Yokota N, Matsuyama S, Tokuda H & Miki K (2003) Crystal
47 1377 structures of bacterial lipoprotein localization factors, LolA and LolB. *EMBO J* **22**: 3199-
48 1378 3209.
49 1379
50
51
52
53
54
55
56
57
58
59
60

- 1
2
3 1380 Taniguchi N, Matsuyama S & Tokuda H (2005) Mechanisms underlying energy-
4 1381 independent transfer of lipoproteins from LolA to LolB, which have similar unclosed
5 1382 {beta}-barrel structures. *The Journal of biological chemistry* **280**: 34481-34488.
6 1383
7 1384 Thompson BJ, Widdick DA, Hicks MG, Chandra G, Sutcliffe IC, Palmer T & Hutchings MI
8 1385 (2010) Investigating lipoprotein biogenesis and function in the model Gram-positive
9 1386 bacterium *Streptomyces coelicolor*. *Mol Microbiol* **77**: 943-957.
10 1387
11 1388 Tjalsma H, Zanen G, Venema G, Bron S & van Dijl JM (1999) The potential active site of
12 1389 the lipoprotein-specific (type II) signal peptidase of *Bacillus subtilis*. *J Biol Chem* **274**:
13 1390 28191-28197.
14 1391
15 1392 Tokuda H, Matsuyama S & Tanaka-Masuda K (2007) Structure, function and transport of
16 1393 lipoproteins in *Escherichia coli*. *The Periplasm*,(Ehrmann M, ed.) p.^pp. 67-79. ASM
17 1394 Press, Washington, D.C.
18 1395
19 1396 Tokuda H, Sander P, Lee BL, Okuda S, Grau T, Tschumi A, Brülle JK, Kurokawa K &
20 1397 Nakayama H (2014) Bacterial lipoproteins: biogenesis, virulence/pathogenicity and
21 1398 trafficking. *Bacterial membranes: structural and molecular biology*,(Remaut H & Fronzes
22 1399 R, eds.), p.^pp. Caister Academic Press.
23 1400
24 1401 Tokunaga M, Tokunaga H & Wu HC (1982) Post-translational modification and
25 1402 processing of *Escherichia coli* prolipoprotein *in vitro*. *Proc Natl Acad Sci U S A* **79**: 2255-
26 1403 2259.
27 1404
28 1405 Tokunaga M, Loranger JM & WU HC (1983) Isolation and characterization of an
29 1406 *Escherichia coli* overproducing prolipoprotein signal peptidase. *The Journal of biological*
30 1407 *chemistry* **258**: 12102-12105.
31 1408
32 1409 Tokunaga M, Loranger JM & Wu HC (1984) Prolipoprotein modification and processing
33 1410 enzymes in *Escherichia coli*. *J Biol Chem* **259**: 3825-3830.
34 1411
35 1412 Tomlinson G, Chimalapati S, Pollard T, *et al.* (2014) TLR-Mediated Inflammatory
36 1413 Responses to *Streptococcus pneumoniae* Are Highly Dependent on Surface Expression
37 1414 of Bacterial Lipoproteins. *J Immunol*.
38 1415
39 1416 Tschantz WR, Paetzel M, Cao G, Suciu D, Inouye M & Dalbey RE (1995) Characterization
40 1417 of a soluble, catalytically active form of *Escherichia coli* leader peptidase: requirement of
41 1418 detergent or phospholipid for optimal activity. *Biochemistry* **34**: 3935-3941.
42 1419
43 1420 Tschumi A, Grau T, Albrecht D, Rezwani M, Antelmann H & Sander P (2012) Functional
44 1421 analyses of mycobacterial lipoprotein diacylglycerol transferase and comparative
45 1422 secretome analysis of a mycobacterial lgt mutant. *Journal of bacteriology* **194**: 3938-
46 1423 3949.
47 1424
48 1425 Tschumi A, Nai C, Auchli Y, Hunziker P, Gehrig P, Keller P, Grau T & Sander P (2009)
49 1426 Identification of apolipoprotein N-acyltransferase (Lnt) in Mycobacteria. *J Biol Chem*
50 1427 **284**: 27146-27156.
51 1428
52
53
54
55
56
57
58
59
60

- 1
2
3 1429 Typas A, Banzhaf M, van den Berg van Saparoea B, *et al.* (2010) Regulation of
4 1430 peptidoglycan synthesis by outer-membrane proteins. *Cell* **143**: 1097-1109.
5 1431
6 1432 Urban S (2009) Making the cut: central roles of intramembrane proteolysis in
7 1433 pathogenic microorganisms. *Nature reviews* **7**: 411-423.
8 1434
9 1435 van Ulsen P, van Alphen L, ten Hove J, Fransen F, van der Ley P & Tommassen J (2003) A
10 1436 Neisserial autotransporter NalP modulating the processing of other autotransporters.
11 1437 *Molecular microbiology* **50**: 1017-1030.
12 1438
13 1439 Vidal-Ingigliardi D, Lewenza S & Buddelmeijer N (2007) Identification of essential
14 1440 residues in apolipoprotein N-acyltransferase, a member of the CN hydrolase family. *J*
15 1441 *Bacteriol* **189**: 4456-4464.
16 1442
17 1443 Villanueva L, Damste JS & Schouten S (2014) A re-evaluation of the archaeal membrane
18 1444 lipid biosynthetic pathway. *Nature reviews* **12**: 438-448.
19 1445
20 1446 Wang P, Shim E, Cravatt B, Jacobsen R, Schoeniger J, Kim AC, Paetzel M & Dalbey RE
21 1447 (2008) Escherichia coli signal peptide peptidase A is a serine-lysine protease with a
22 1448 lysine recruited to the nonconserved amino-terminal domain in the S49 protease family.
23 1449 *Biochemistry* **47**: 6361-6369.
24 1450
25 1451 Ward A, Reyes CL, Yu J, Roth CB & Chang G (2007) Flexibility in the ABC transporter
26 1452 MsbA: Alternating access with a twist. *Proceedings of the National Academy of Sciences of*
27 1453 *the United States of America* **104**: 19005-19010.
28 1454
29 1455 Webb CT, Selkirk J, Perry AJ, Noinaj N, Buchanan SK & Lithgow T (2012) Dynamic
30 1456 association of BAM complex modules includes surface exposure of the lipoprotein BamC.
31 1457 *Journal of molecular biology* **422**: 545-555.
32 1458
33 1459 Wehmeier S, Varghese AS, Gurucha SS, Tissot B, Panico M, Hitchen P, Morris HR, Besra GS,
34 1460 Dell A & Smith MC (2009) Glycosylation of the phosphate binding protein, PstS, in
35 1461 Streptomyces coelicolor by a pathway that resembles protein O-mannosylation in
36 1462 eukaryotes. *Molecular microbiology* **71**: 421-433.
37 1463
38 1464 White DC & Frerman FE (1968) Fatty acid composition of the complex lipids of
39 1465 Staphylococcus aureus during the formation of the membrane-bound electron transport
40 1466 system. *Journal of bacteriology* **95**: 2198-2209.
41 1467
42 1468 Wichgers Schreur PJ, Rebel JM, Smits MA, van Putten JP & Smith HE (2011) Lgt
43 1469 processing is an essential step in Streptococcus suis lipoprotein mediated innate
44 1470 immune activation. *PLoS One* **6**: e22299.
45 1471
46 1472 Widdick DA, Hicks MG, Thompson BJ, Tschumi A, Chandra G, Sutcliffe IC, Brulle JK,
47 1473 Sander P, Palmer T & Hutchings MI (2011) Dissecting the complete lipoprotein
48 1474 biogenesis pathway in Streptomyces scabies. *Mol Microbiol* **80**: 1395-1412.
49 1475
50
51
52
53
54
55
56
57
58
59
60

- 1
2
3 1476 Williams AH & Raetz CR (2007) Structural basis for the acyl chain selectivity and
4 1477 mechanism of UDP-N-acetylglucosamine acyltransferase. *Proc Natl Acad Sci USA* **104**:
5 1478 13543-13550.
6 1479
7 1480 Williams MG, Fortson M, Dykstra CC, Jensen P & Kushner SR (1989) Identification and
8 1481 genetic mapping of the structural gene for an essential *Escherichia coli* membrane
9 1482 protein. *J Bacteriol* **171**: 565-568.
10 1483
11 1484 Wu HC (1996) Biosynthesis of lipoproteins. *Escherichia coli and Salmonella Cellular and*
12 1485 *Molecular Biology*, Vol. 1 (Neidhardt FC, Curtiss III R, Ingraham JL, Low KB, Magasanik B,
13 1486 Reznikoff WS, Riley M, Schaechter M & Umberger HE, eds.), p. ^pp. 1005-1014. ASM
14 1487 Press, Washington D.C. USA.
15 1488
16 1489 Wu HC, Hou C, Lin JJ & Yem DW (1977) Biochemical characterization of a mutant
17 1490 lipoprotein of *Escherichia coli*. *Proceedings of the National Academy of Sciences of the*
18 1491 *United States of America* **74**: 1388-1392.
19 1492
20 1493 Wu HC, Lai JS, Hayashi S & Giam CZ (1982) Biogenesis of membrane lipoproteins in
21 1494 *Escherichia coli*. *Biophysical journal* **37**: 307-315.
22 1495
23 1496 Wu HC, Tokunaga M, Tokunaga H, Hayashi S & Giam CZ (1983) Posttranslational
24 1497 modification and processing of membrane lipoproteins in bacteria. *Journal of cellular*
25 1498 *biochemistry* **22**: 161-171.
26 1499
27 1500 Wyckoff TJ, Lin S, Cotter RJ, Dotson GD & Raetz CR (1998) Hydrocarbon rulers in UDP-N-
28 1501 acetylglucosamine acyltransferases. *J Biol Chem* **273**: 32369-32372.
29 1502
30 1503 Xiao Y & Wall D (2014) Genetic redundancy, proximity, and functionality of *lspA*, the
31 1504 target of antibiotic TA, in the *Myxococcus xanthus* producer strain. *Journal of*
32 1505 *bacteriology* **196**: 1174-1183.
33 1506
34 1507 Xiao Y, Gerth K, Müller R & Wall D (2012) Myxobacterium-produced antiobiotic TA
35 1508 (Myxovirescin) inhibits type II signal peptidase. *Antimicrob Agents and Chemother* **56**:
36 1509 2014-2021.
37 1510
38 1511 Yakushi T, Tajima T, Matsuyama S-I & Tokuda H (1997) Lethality of the covalent linkage
39 1512 between mislocalized major outer membrane lipoprotein and the peptidoglycan of
40 1513 *Escherichia coli*. *J Bacteriol* **179**: 2857-2862.
41 1514
42 1515 Yamagata H, Daishima K & Mizushima S (1983) Cloning and expression of a gene coding
43 1516 for the prolipoprotein signal peptidase of *Escherichia coli*. *FEBS letters* **158**: 301-304.
44 1517
45 1518 Yem DW & Wu HC (1977) Genetic characterization of an *Escherichia coli* mutant altered
46 1519 in the structure of murein lipoprotein. *Journal of bacteriology* **131**: 759-764.
47 1520
48 1521 Yem DW & Wu HC (1978) Physiological characterization of an *Escherichia coli* mutant
49 1522 altered in the structure of murein lipoprotein. *Journal of bacteriology* **133**: 1419-1426.
50 1523
51
52
53
54
55
56
57
58
59
60

- 1
2
3 1524 Zhang WY & Wu HC (1992) Alterations of the carboxyl-terminal amino acid residues of
4 1525 *Escherichia coli* lipoprotein affect the formation of murein-bound lipoprotein. *The*
5 1526 *Journal of biological chemistry* **257**: 19560-19564.
6 1527
7 1528 Zhou Z, White KA, Polissi A, Georgopoulos C & Raetz CR (1998) Function of *Escherichia*
8 1529 *coli* MsbA, an essential ABC family transporter, in lipid A and phospholipid biosynthesis.
9 1530 *The Journal of biological chemistry* **273**: 12466-12475.
10 1531
11 1532 Zuckert WR (2014) Secretion of Bacterial Lipoproteins: Through the Cytoplasmic
12 1533 Membrane, the Periplasm and Beyond. *Biochim Biophys Acta*.
13 1534
14 1535
15
16
17
18
19
20
21
22
23
24
25
26
27
28
29
30
31
32
33
34
35
36
37
38
39
40
41
42
43
44
45
46
47
48
49
50
51
52
53
54
55
56
57
58
59
60

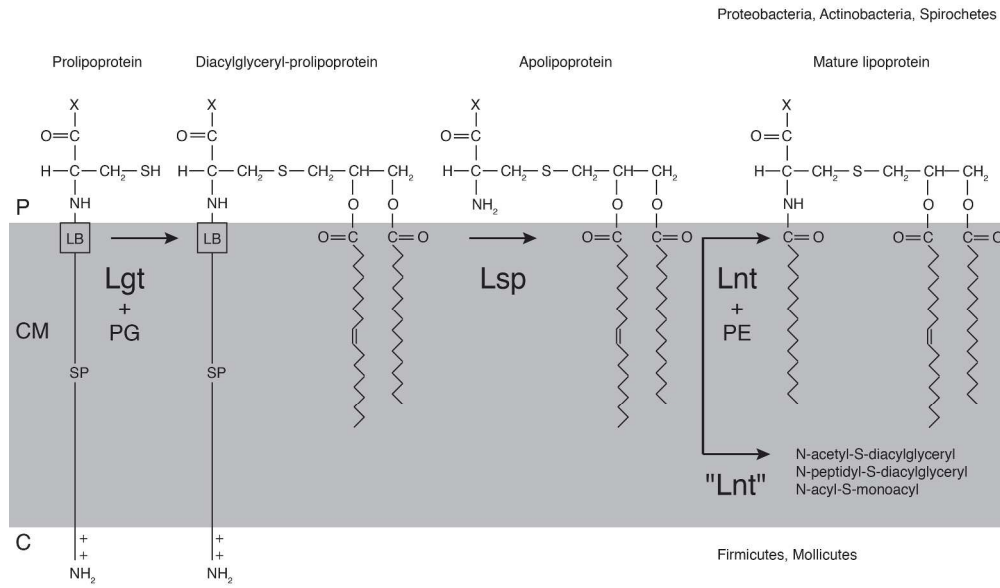
For Peer Review

Table 1. Essentiality of genes encoding lipoprotein modifying enzymes in diderm bacteria.

	<i>lgt</i>	<i>lsp</i>	<i>lnt</i>
<i>E. coli</i>	<i>lgt</i> (<i>umpA</i>) (Gan <i>et al.</i> , 1995)	<i>lsp</i> (Tokunaga <i>et al.</i> , 1983, Yamagata <i>et al.</i> , 1983)	<i>lnt</i> (<i>cutE</i>) (Gupta & Wu, 1991, Rogers <i>et al.</i> , 1991, Gupta <i>et al.</i> , 1993, Robichon <i>et al.</i> , 2005)
<i>S. enterica</i>	<i>lgt</i> (Gan <i>et al.</i> , 1993)		<i>lnt</i> (Gupta <i>et al.</i> , 1993)
<i>M. xantus</i>		<i>lsp1</i> , <i>lsp2</i> , <i>lsp3</i> , <i>lsp4</i> (Xiao & Wall, 2014)	
<i>M. smegmatis</i>	<i>lgt</i> (MSMEG_3222) (Tschumi <i>et al.</i> , 2012)		<i>lnt</i> (MSMEG_3860) (<i>ppm2</i>) (Tschumi <i>et al.</i> , 2009)
<i>M. tuberculosis</i>	<i>lgt</i> (Rv1614) (Sasseti <i>et al.</i> , 2003, Tschumi <i>et al.</i> , 2012)	<i>lsp</i> (Rv1539) (Sander <i>et al.</i> , 2004, Rampini <i>et al.</i> , 2008)	<i>ppm1</i> (Rv2051c) (Tschumi <i>et al.</i> , 2009)
<i>M. bovis</i>			<i>lnt</i> (BCG_2070c) (Brülle <i>et al.</i> , 2013)
<i>C. glutamicum</i>			<i>lnt</i> (NCgl1424) (Mohiman <i>et al.</i> , 2012)
<i>S. coelicolor</i>	<i>lgt1</i> (SCO2034), <i>lgt2</i> (SCO7822) (Thompson <i>et al.</i> , 2010)	<i>lsp</i> (SCO2074) (Thompson <i>et al.</i> , 2010)	<i>lnt1</i> (SCO1014), <i>lnt2</i> (SCO1336) (Widdick <i>et al.</i> , 2011, Cordova-Davalos <i>et al.</i> , 2014)
<i>S. scabies</i>	<i>lgt</i> (SCAB68531) (Widdick <i>et al.</i> , 2011)	<i>lsp</i> (SCAB68121) (Widdick <i>et al.</i> , 2011)	<i>lnt1</i> (SCAB83111), <i>lnt2</i> (SCAB76621) (Widdick <i>et al.</i> , 2011)
<i>S. lividans</i>		<i>lsp</i> (Gullon <i>et al.</i> , 2013)	

Essential genes are shown in red, non-essential genes are shown in blue. Table includes only published findings. See text for further details.

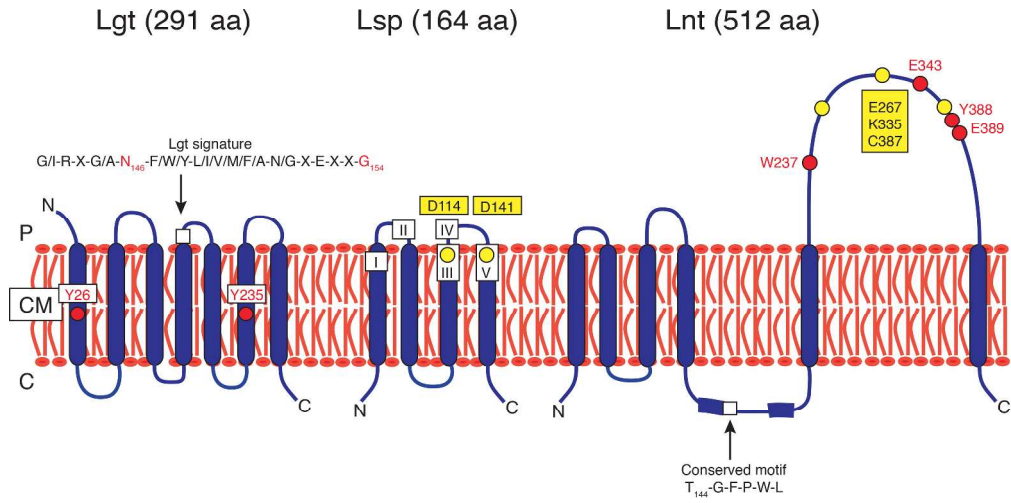
FIGURE 1



290x191mm (300 x 300 DPI)

Review

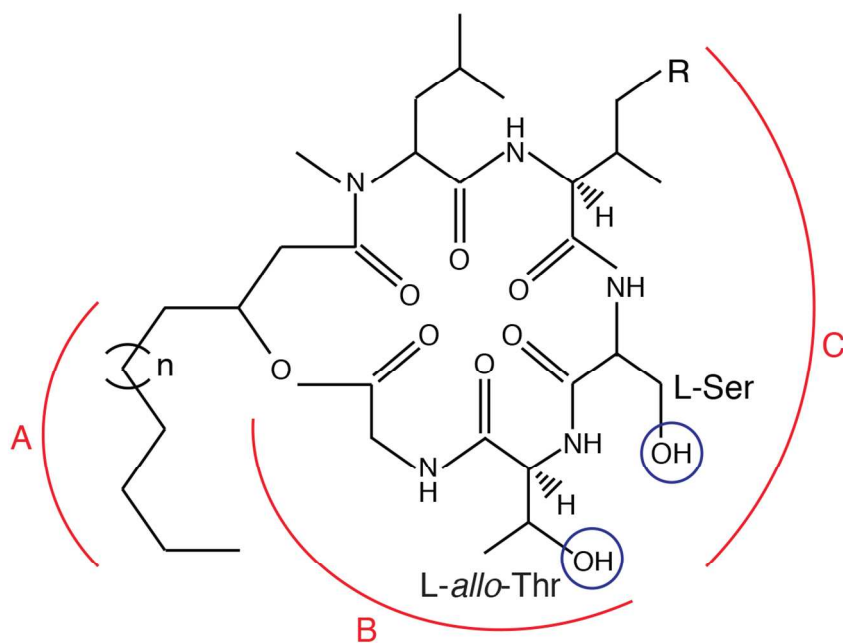
FIGURE 2



293x167mm (300 x 300 DPI)

er Review

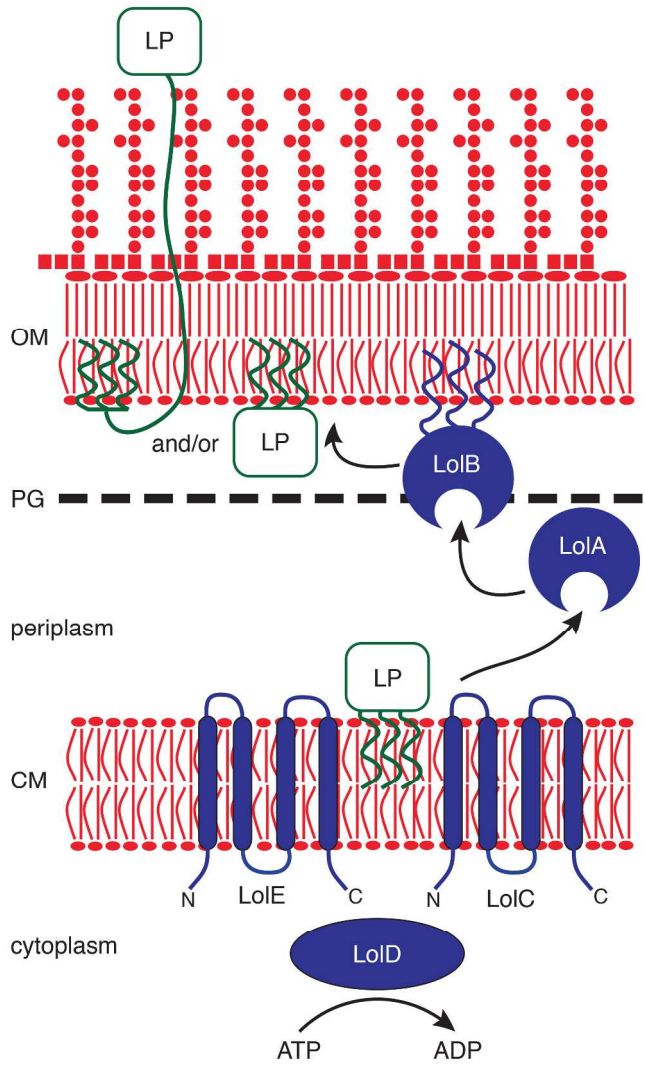
FIGURE 3



128x98mm (300 x 300 DPI)

1
2
3
4
5
6
7
8
9
10
11
12
13
14
15
16
17
18
19
20
21
22
23
24
25
26
27
28
29
30
31
32
33
34
35
36
37
38
39
40
41
42
43
44
45
46
47
48
49
50
51
52
53
54
55
56
57
58
59
60

FIGURE 4



180x320mm (300 x 300 DPI)