



HAL
open science

Impact of M36I polymorphism on the interaction of HIV-1 protease with its substrates: insights from molecular dynamics.

Mauricio Gs Costa, Técio G Benetti-Barbosa, Nathan Desdouits, Arnaud Blondel, Paulo M Bisch, Pedro G Pascutti, Paulo R Batista

► To cite this version:

Mauricio Gs Costa, Técio G Benetti-Barbosa, Nathan Desdouits, Arnaud Blondel, Paulo M Bisch, et al.. Impact of M36I polymorphism on the interaction of HIV-1 protease with its substrates: insights from molecular dynamics.. BMC Genomics, 2014, 15 (Suppl 7), pp.S5. 10.1186/1471-2164-15-S7-S5 . pasteur-01402879

HAL Id: pasteur-01402879

<https://pasteur.hal.science/pasteur-01402879>

Submitted on 25 Nov 2016

HAL is a multi-disciplinary open access archive for the deposit and dissemination of scientific research documents, whether they are published or not. The documents may come from teaching and research institutions in France or abroad, or from public or private research centers.

L'archive ouverte pluridisciplinaire **HAL**, est destinée au dépôt et à la diffusion de documents scientifiques de niveau recherche, publiés ou non, émanant des établissements d'enseignement et de recherche français ou étrangers, des laboratoires publics ou privés.



Distributed under a Creative Commons Attribution 4.0 International License

RESEARCH

Open Access

Impact of M36I polymorphism on the interaction of HIV-1 protease with its substrates: insights from molecular dynamics

Mauricio GS Costa^{1,2†}, Tício G Benetti-Barbosa^{2†}, Nathan Desdouits³, Arnaud Blondel³, Paulo M Bisch², Pedro G Pascutti², Paulo R Batista^{1,2,3*}

From 9th International Conference of the Brazilian Association for Bioinformatics and Computational Biology (X-Meeting 2013)

Recife, Brazil. 3-6 November 2013

Abstract

Background: Over the last decades, a vast structural knowledge has been gathered on the HIV-1 protease (PR). Noticeably, most of the studies focused the B-subtype, which has the highest prevalence in developed countries. Accordingly, currently available anti-HIV drugs target this subtype, with considerable benefits for the corresponding patients.

However, in developing countries, there is a wide variety of HIV-1 subtypes carrying PR polymorphisms related to reduced drug susceptibility. The non-active site mutation, M36I, is the most frequent polymorphism, and is considered as a non-B subtype marker.

Yet, the structural impact of this substitution on the PR structure and on the interaction with natural substrates remains poorly documented.

Results: Herein, we used molecular dynamics simulations to investigate the role of this polymorphism on the interaction of PR with six of its natural cleavage-sites substrates.

Free energy analyses by MMPB/SA calculations showed an affinity decrease of M36I-PR for the majority of its substrates. The only exceptions were the RT-RH, with equivalent affinity, and the RH-IN, for which an increased affinity was found. Furthermore, molecular simulations suggest that, unlike other peptides, RH-IN induced larger structural fluctuations in the wild-type enzyme than in the M36I variant.

Conclusions: With multiple approaches and analyses we identified structural and dynamical determinants associated with the changes found in the binding affinity of the M36I variant. This mutation influences the flexibility of both PR and its complexed substrate. The observed impact of M36I, suggest that combination with other non-B subtype polymorphisms, could lead to major effects on the interaction with the 12 known cleavage sites, which should impact the virion maturation.

Background

The human immunodeficiency virus type-1 (HIV-1) has been classified in 3 groups (N, O and M). The latter accounts for 99% of the infections and is divided in nine different subtypes (A-D, F-H, J-K), more than 48 circulating recombinant forms (CRFs) and thousands of unique

recombinant forms [1,2]. All approved inhibitors (targeting HIV-1 enzymes involved in key steps of viral cycle – e.g. reverse transcriptase, integrase and protease) currently in use were developed for the B-subtype (prevalent in developed countries). However, this subtype accounts only for 10% of the infections worldwide whereas non-B subtypes are prevalent in regions with the higher incidence of infections (mostly in sub-Saharan Africa) [2]. Among those targets, the protease (PR) is one of the most important in the antiretroviral therapy context. PR is responsible for the processing of Gag and Pol polyproteins, allowing virions

* Correspondence: pbatista@fiocruz.br

† Contributed equally

¹Programa de Computação Científica, Fundação Oswaldo Cruz, Rio de Janeiro - RJ, Brazil

Full list of author information is available at the end of the article

maturation. PR inhibitors have been developed over the last 25 years, and their utilization has brought a considerable benefit for infected patients [3].

There are around 450 experimentally determined available structures of this enzyme and this vast structural knowledge allows a survey of a huge number of conformations of PR complexes, with both inhibitors and substrates. Structurally, PR functions as a symmetric homodimer (99 residues each subunit), consisting in topologically different domains, as shown in Figure 1: flaps (residues 43-58); ear-flaps (35-42); cheek-turn (11-22); cheek sheet (59-75); eye (23-30 - where it is found the catalytic aspartic 25); nose (6-10) and the whiskers [4]. Structural and dynamical studies of PR normally focused on its more flexible region, the flaps, since they control the entrance/stabilization of ligands in the active site [5,6].

PR can recognize and cleave more than 12 different substrates that share no conserved motif. However PR is a symmetric dimer, this enzyme is able to recognize asymmetric substrates [7]. Crystal structures of PR complexed to six different substrates showed that their shape rather than their sequence is the main guide for the substrate recognition. The six peptides present specific hydrogen bond interactions, mainly taking place between the backbone of PR and that of the substrates [8].

Despite all the structural knowledge accumulated through the last decades, mainly for the B-subtype, there is a clear lack of information concerning interactions between non-B proteases and their ligands. Several PR polymorphisms are currently known and their effects mainly rely on reducing drug susceptibility. Among these polymorphisms, M36I is widely found in non-B proteases [9]; some authors suggest that it might be considered a genetic marker for HIV-1 group M non-B subtypes [10,11]. Although this residue is far from the PR active

site, mutations in this site are often related to resistance to inhibitors such as ritonavir, nelfinavir, indinavir and atazanavir [12]. Using molecular dynamics simulations, our group has previously elucidated the molecular mechanism responsible for differences in affinity of PR from different (B and non-B) subtypes against ritonavir [13].

A previous study investigated the role of the PR M36I polymorphism on the interaction with the inhibitor nelfinavir [14]. In this paper, the authors performed 3 ns molecular dynamics (MD) simulations of PR and proposed that this mutation regulates the size of the PR binding site and thus affecting the ligand binding. Since those simulations explore a very short timescale, they would barely explore relevant conformational changes (which are frequently linked to binding cavity size regulation) [14]. Therefore, there is still a need for structural studies evaluating the impact of the PR M36I polymorphism regarding its interaction with natural substrates. Recently, based in structural analysis and computational predictions, Alvizo et al. designed a PR variant (A28S/D30F/G48R) with altered specificity for one of the substrate-cleavage sites, showing that understanding protein-protein specific contacts one is able to engineer a more stable complex [15].

Herein, we performed a set of molecular dynamics simulations (50 ns) to better understand the interactions between PR (B-subtype or M36I) and six different natural substrates. The sequences of these six substrates (Table 1) correspond to the substrate cleavage sites: *i.* within the Gag polyprotein: matrix-capsid [MA-CA], capsid-p2 [CA-p2], p2-nucleocapsid [p2-NC] and p1-p6; and *ii.* within the Pol polyprotein: reverse transcriptase-RNaseH [RT-RH] and RNaseH-integrase [RH-IN].

Binding free energies calculated from the MD trajectories with MM-PBSA revealed that for the majority of complexes, the M36I proteases have a decreased affinity against the substrates when compared to the WT (B-subtype) PR. Nonetheless, there are two exceptions: the complexes with RT-RH, with equivalent affinity, and the RH-IN substrate, with an increased affinity for the M36I PR. Essential dynamics (ED) and structural analyses allowed us to identify motions that could be related to binding affinities differences and evaluate the impact of this single polymorphism in the interaction of the PR with their substrates.

Results and discussion

PR complexes

From the six crystallographic structures of B-subtype PR complexed with different substrate (Table 1) available in the PDB (1F7A [7], and 1KJ4, 1KJ7, 1KJF, 1KJG, 1KJH [8]), we performed comparative modeling in order to build the M36I PR complexes, using each structure independently as template (as previously described [16]) and

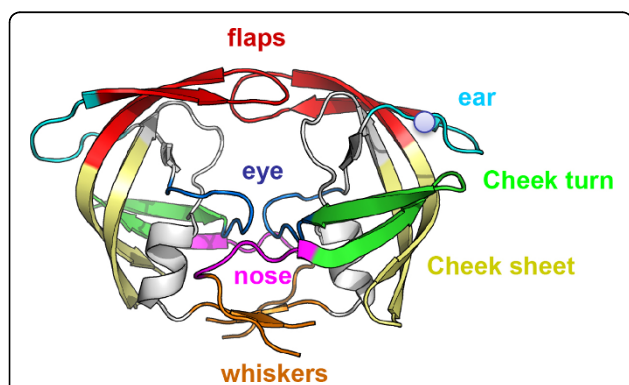


Figure 1 Topology of the HIV-1 protease. Topology of HIV-1 protease colored according to the convention proposed in Peryman et al, 2003. In red the flap domain (residues 43-58); in cyan the ears (35-42); in green the cheek turns (11-22); in yellow the cheek sheets (59-75); in blue the eyes (23-30); in magenta the nose (6-10) and in orange the whiskers (1-5 and 95-99). The 36th residue is represented by a grey sphere.

Table 1 Sequences of the six HIV-1 PR substrates studied in this work

	Substrate	P5	P4	P3	P2	P1		P1'	P2'	P3'	P4'	P5'	PDB ID
Gag polyprotein	CA-p2	Lys	Ala	Arg	Val	Leu	*	Ala	Glu	Ala	Met	-	1F7A
	MA-CA	Val	Ser	Gln	Asn	Tyr	*	Pro	Ile	Val	Gln	-	1KJ4
	p1-p6	Arg	Pro	Gly	Asn	Phe	*	Leu	Gln	Ser	Arg	Pro	1KJF
	p2-NC	-	Ala	Thr	Ile	Met	*	Met	Gln	Arg	Gly	-	1KJ7
Pol polyprotein	RH-IN	Ile	Arg	Lys	Ile	Leu	*	Phe	Leu	Asp	Gly	Ile	1KJH
	RT-RH	-	Ala	Glu	Thr	Phe	*	Tyr	Val	Asp	Gly	Ala	1KJG

* substrate cleavage site

Methods). Subsequently, solvation, ions insertion, energy minimization and consecutive MD simulations (heating, equilibration and production) were conducted for the 12 systems (6 for the B-subtype and 6 for the M36I). After an extensive equilibration, (previously described [17] and Additional file 1), we carried out production simulations with explicit solvent for 50 ns, which yielded a cumulative simulation time of 0.6 μ s.

Global structural parameters of PR

First, we monitored the time evolution of the root mean square deviations (RMSD) of the protein backbone, as a measure of the stability of the trajectories (Figure 2). This analysis clearly revealed a similar stable behavior for all simulated systems, with deviations ranging from 0.10 to 0.15 nm. This is consistent with other studies reporting MD simulations of ligand bound forms of PR and also with the observation that generally ligand binding restricts the conformational space of proteins [5,6,16,18].

Next, to obtain further information of possible structural transitions occurred during the trajectories we performed a cluster analysis, as previously described [17]. Briefly, if during a simulation numerous clusters (based on a RMSD cut-off criteria) are visited, the system may be considered more flexible than otherwise if few clusters (densely populated) are observed. Herein each cluster contains conformations within an RMSD of 0.11 nm from its cluster center structure.

As displayed in Figure 3A this analysis shows that independently of the M36I polymorphism, PR stayed in the same cluster during the whole time-trajectory for all systems, except for the WT-PR - RH-IN system. In the latter, as opposed to the M36I - RH-IN system, which was stable, we clearly observed after 6 ns a shift towards a distinct PR conformation, which remained stable until the end of the 50 ns period. To confirm this result, we compared the pairwise distribution of the RMS during MD (Figure 3B). This analysis allowed us to distinguish two different populations in the PR-WT contrasting with the narrower normal distribution for the M36I PR. We also conducted the same analysis for the other simulated systems and observed a single-population distribution,

independently of the presence of the M36I substitution (Additional file 2).

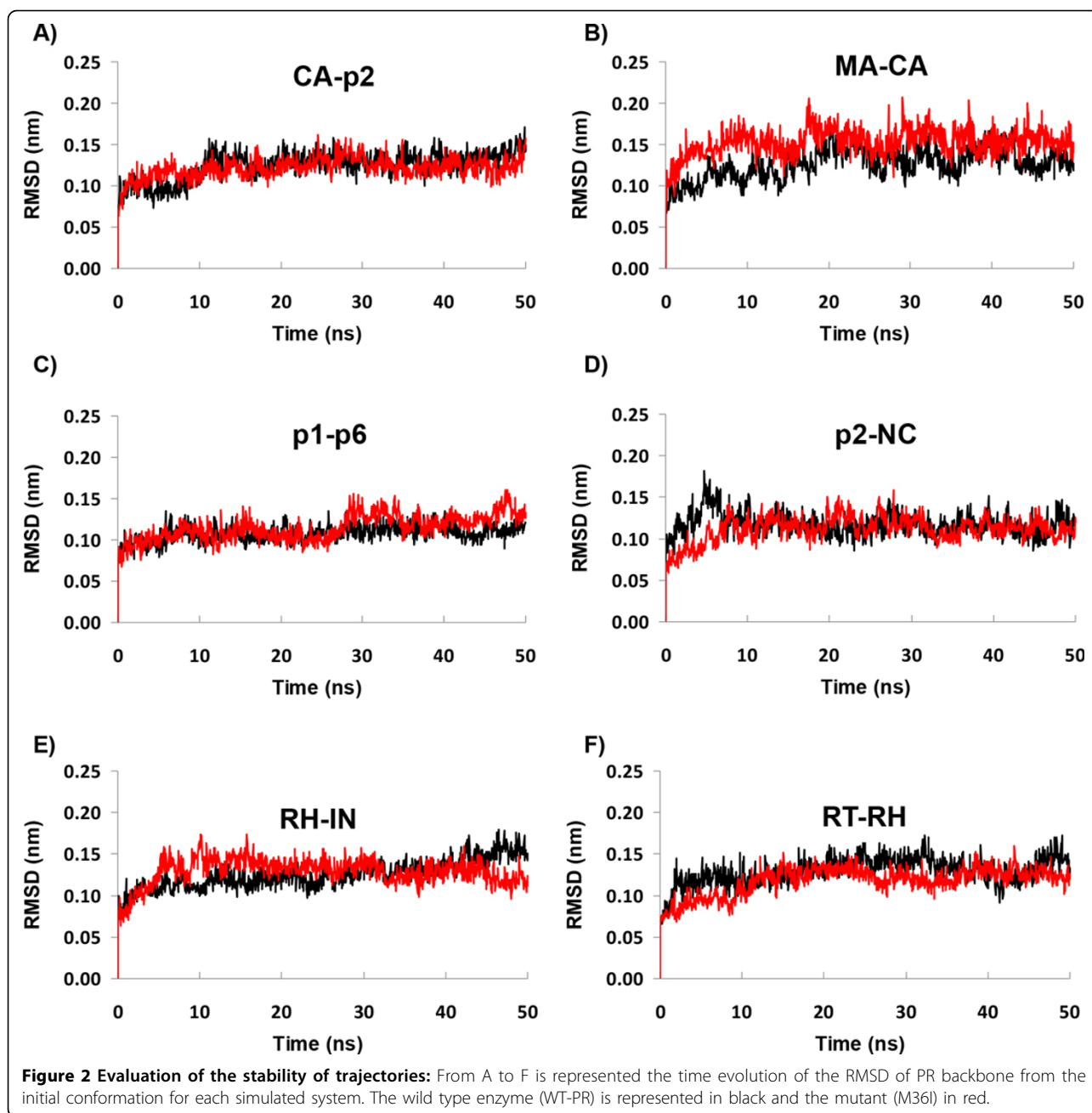
Next, we compared the root mean square fluctuations (RMSF) of PR backbone for each simulated system (Additional file 3). Overall, the profile and the magnitude of atomic fluctuations were similar in all simulated systems. Interestingly, after inspection of the flap hinge region, which comprises residues 34-40, for the RH-IN complexes, we noticed higher fluctuations in the WT compared to the M36I-PR; while other regions presented a similar behavior (Additional file 3).

Based on crystallographic data, Sanches *et al.* proposed that changing a long methionine residue to a shorter isoleucine (in non-B subtype PR) would lead to the adoption of a distinct conformation of the PR ear (flap hinge), which would be displaced toward the 76-83 loop [19]. This rearrangement would be responsible for a local stabilization of the flap hinge region (as shown by b-factor analysis), which would make this region more rigid than in the WT enzyme. However, according to our RMSF analysis, we only observed such a stabilization of the flap hinge on the mutant M36I-PR when it is bound to RH-IN. For the other substrates, this effect is not observed with the M36I substitution. However, this phenomenon could require the presence of other non-B subtypes polymorphism mutations to occur.

The flap region (around the Ile 50 and 149) was more flexible for some M36I PR (MA-CA, p1-p6 and p2-NC). This corresponded to a less stable behavior of these substrates during the simulations.

Global structural parameters of the substrates

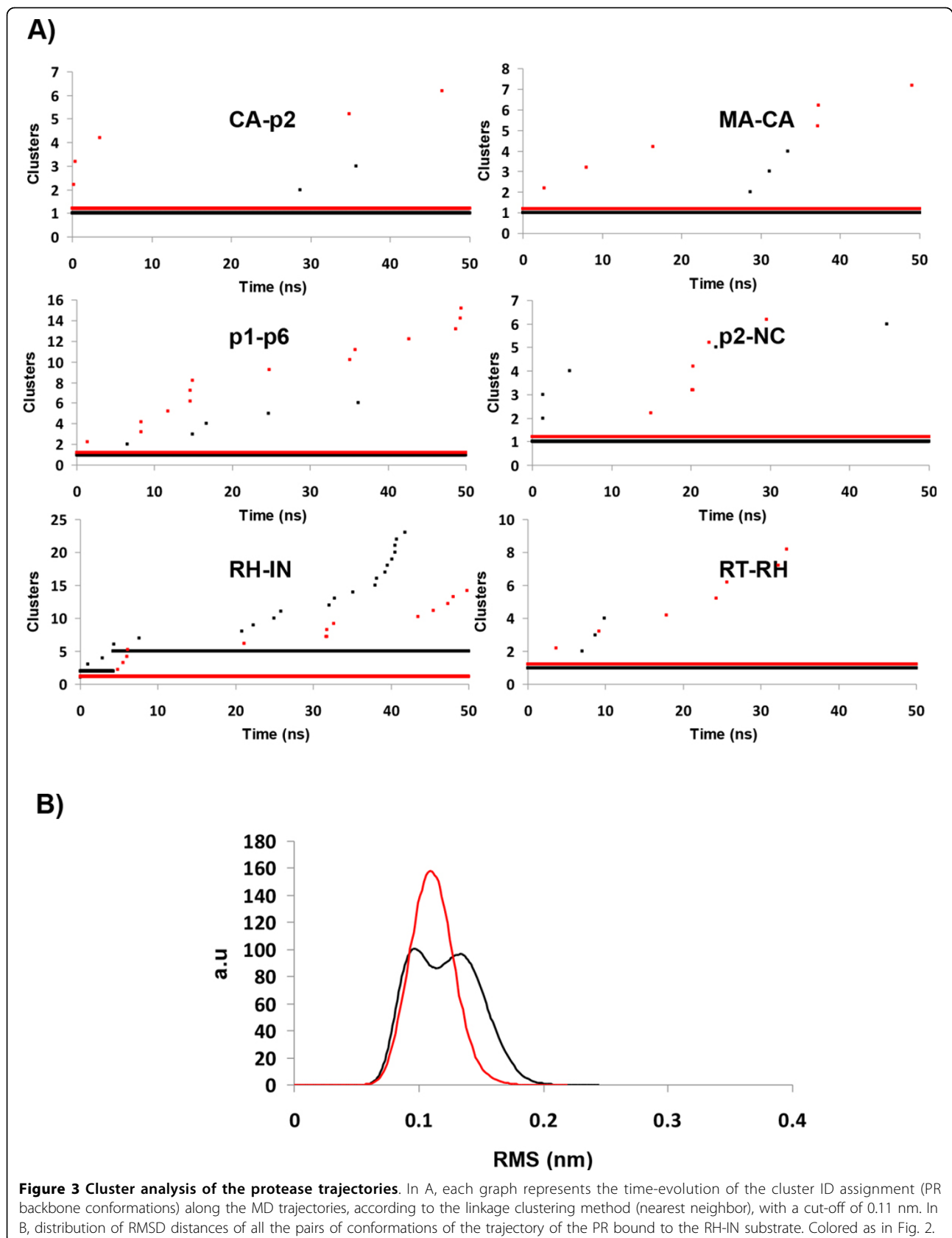
We compared the RMSF of the substrates' backbone during the trajectories with the same procedure as for the enzymes. To facilitate visualization of the results, we displayed the average substrate MD structures with colors indicating the RMSF of each residue (Figure 4). We observed similar profiles for each substrate bound to WT or M36I PR. For all the substrates, the central region (from P3 to P3') is very stable. The terminal groups were less stable for the M36I-complexed substrates (with the exception of the RH-IN).

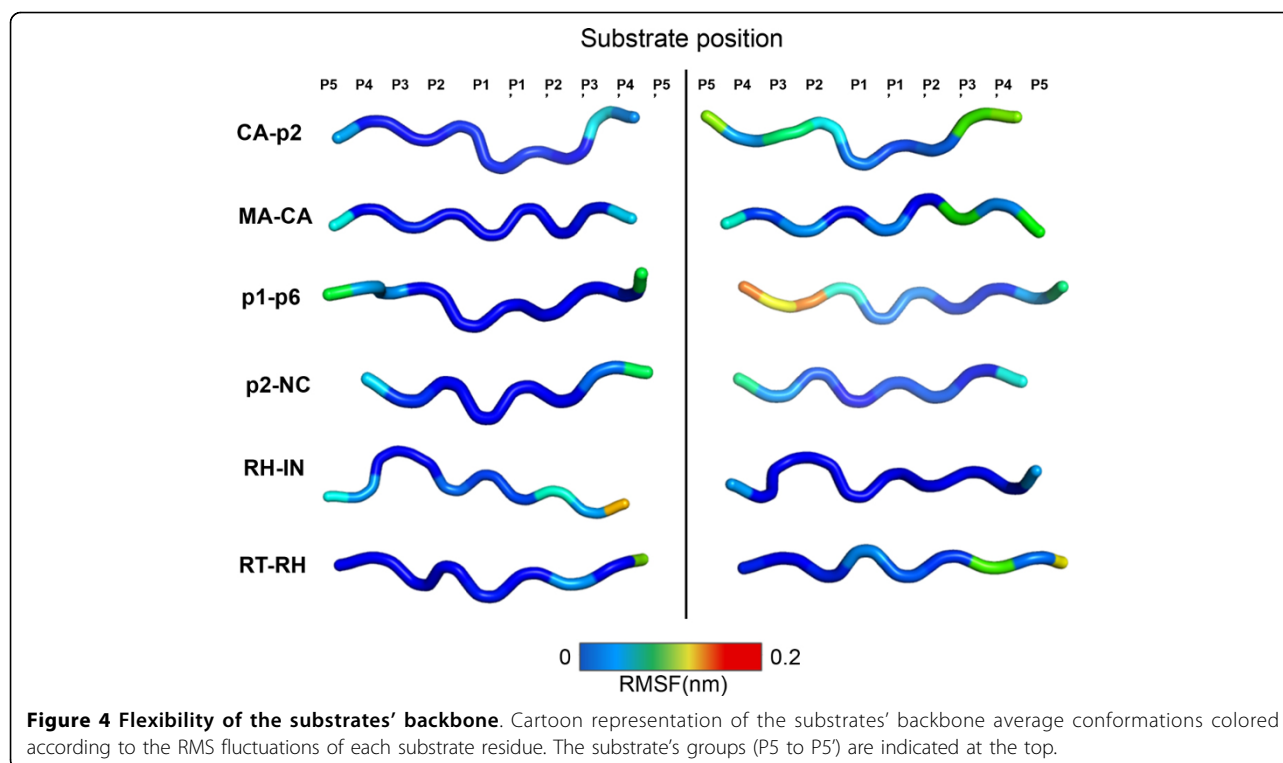


We also conducted a cluster analysis to examine the behavior of the backbone of each substrate throughout the MD trajectories. Clusters were defined here by conformations within a RMSD of 0.07 nm of its center structure. The substrates MA-CA, p2-NC and RT-RH were very stable during both WT and mutant PR trajectories (Figure 5), as also observed in Figure 4. Meanwhile, the CA-p2, p1-p6 substrates were more stable when bound to WT PR, since we observed the occurrence of a structural transition in each M36I system: around 3 ns and 35 ns, respectively. In contrast, the RH-IN substrate was

more stable when bound to the mutant enzyme, which is in agreement with the RMSD and cluster distribution observed for the protein (Figures 2 and 3).

To investigate the substrate conformations sampled during the trajectories we compared the pairwise distribution of RMS (all pairs of steps in each trajectory, Additional file 4). As expected, the RMS distributions of MA-CA and p2-NC substrates presented narrower normal distributions with an average value of ~0.1 nm, in agreement with the results of the cluster analysis. Although for the RT-RH substrate, we observed broader





distributions (ranging from 0.05 to 0.25 nm). It was possible to identify a very densely populated cluster centered at 0.05 nm in the WT PR simulation, contrasting with the roughly three-population distribution observed in the mutant. Based on this result, we suggest that this substrate is more stable when bound to the WT PR. Concerning the p1-p6 and RH-IN substrates, we observed one narrow distribution and one wider, bimodal one. For p1-p6 binding to the WT appeared more stable than on the mutant form. For RH-IN, by contrast, binding appeared more stable with M36I-RT.

A recent publication proposed the existence of folding preferences for the PR cleavage sites affecting kinetic parameters such as K_m and K_{cat} [20]. Using a simple regression analysis on PR/substrate crystallographic structures where the dihedral angle $O(P2) - C(P2) - C(P1) - O(P1)$ ranges from 127.5° to 158.6° , they disclosed an inverse correlation between the magnitude of the dihedral angle and K_{cat} . Considering that: *i.* a crystallographic structure is a single conformation representative of a states average; *ii.* only few complexes were evaluated and; *iii.* even in the bound state the peptide is not frozen, we decide to investigate the relevance of the assumption made in that publication. For this reason, we measured how often the dihedral angle $O(P2) - C(P2) - C(P1) - O(P1)$ was in the 127.5° to 158.6° range. The sampling of several conformations during the trajectories presumably allows a more robust and statistically relevant analysis.

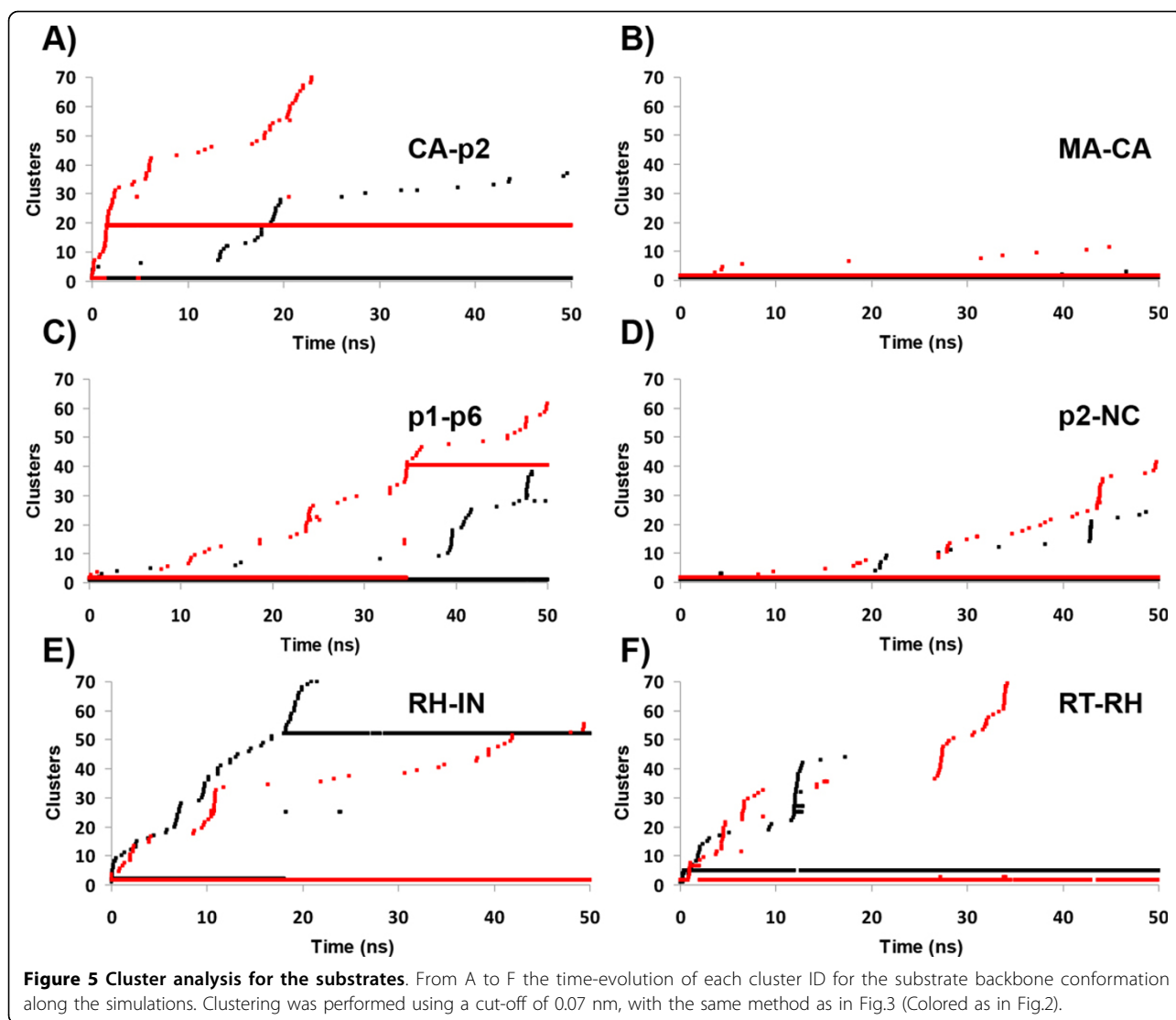
We obtained frequencies below 10% for most of the substrates, except for: RT-RH (23.49% consB / 29% M36I) and MA-CA when bound to the mutant enzyme (29.78%). The low values obtained suggest that such correlation is not likely to be taken as a good predictive factor to relate the substrates structure and kinetics.

Essential dynamics analysis

Convergence and significance of the essential subspace

Several studies have demonstrated that most of the time, large amplitude motions, which are frequently implied in protein functions, involve few degrees of freedom [17,21,22]. We applied essential dynamics (ED) analysis to characterize the large amplitude motions present in the trajectories. First, it is necessary to access the quality of data, to avoid misinterpretations of the results. For that, we checked the cosine content of the first principal components (PCs), as previously described [17]. Briefly, if the cosine content is close to 1, the motions observed are likely to be representative of a random diffusion or drifting behavior. On the other hand, low values are related to correlated or equilibrated motions. We obtained very low values of cosine content for the first two PCs in all trajectories, thus indicative of genuine motions (Additional file 5).

To check the statistical significance of the motions captured by the first PCs it is important to measure the convergence of the essential subspace [23,24]. We divided the



trajectories in increasing time window (t in $0 - n \times 5$ ns with n ranging from 1 to 10), then divided the current window in two equally sized sub-windows and performed a principal component analysis (PCA) in each one. Next, we evaluated the root mean square inner product (RMSIP) between two halves of the trajectory as previously described [17,24]. The RMSIP values were about 0.6 in all simulations and window, similar to those reported in other ED studies (Additional file 6A) [17,23,25]. Additionally, we measured the RMSIP between sequential parts of the simulation, which revealed a stable behavior during the entire simulations, thus confirming the convergence of the essential subspace (Additional file 6B).

Comparing the extent of sampling in WT and M36I forms

We inspected the PR conformational space described by the first two principal components, PC1 and PC2 to check whether the polymorphism affected the most relevant

motions present on the trajectories. We stress here that we measured the overlaps between the eigenvectors obtained for the WT and mutant for each substrate complex considered (e.g. WT-CA-P2 vs. M36I-CA-P2) for the first two components only. In all cases, the values were extremely high ranging from 0.7 to 0.85. This was expected since the behaviors of the WT and M36I forms bound to the same substrate were similar (Figure 3 and Additional file 2). Regarding the directions of the motions, we identified high mobility mainly in the cheek-turn and ear regions (residues 11-22 and 35-42).

Additional file 7 depicts the projections of the MD trajectories of both forms onto the first two PCs. In this representation, each point is associated to each analyzed conformation of the enzyme backbone during the MD simulations; while the different colors highlight the temporal sequence of frames. Interestingly, the projection of

the WT trajectories revealed a smaller extent of sampling as compared to their respective counterparts from the M36I trajectories (Additional file 7). Remarkably, the only exception was the RH-IN complexes (Figure 6A), in which the M36I form explored a smaller region than the WT one.

A free energy landscape (FEL) analysis of the WT projections revealed that the access to the lowest energy conformer at approximately 20 ns (Figure 6B). This structure resembles the starting conformation, differing solely on the ear and cheek region. Thereafter, the enzyme still explored a large portion of the conformational space, thus indicating an absence of conformational stabilization. By contrast, after oscillations during the first 10 ns, the M36I form reached a close region of the conformational space and remained there until the end of the simulation. The lowest energy conformers were accessed during the second half of the simulation (Figure 6B).

These results are indeed interesting since they demonstrate that despite the similar stable behaviors revealed by RMSD analysis, PCA projection can differentiate the WT and M36I forms in terms of the stabilization of large amplitude motions. However, it is not shown yet that the

modulation of the binding affinities is due to the differences in the dynamical behavior of the WT and M36I forms.

Understanding the structural determinants of binding affinity

Several previous studies have investigated the binding free energies of inhibitors and substrates to PR [14,16,26-29]. In general such type of analysis is performed in short trajectories (in the ps timescale), in which conformational changes rarely occur. We conducted here MM/PBSA analyses in the last nanosecond of the 50 ns trajectories, allowing the substrates to freely deviate from the starting structures and reach stable conformers. Table 2 displays the values of each contribution to the binding energy (ΔG_b), as well as the difference between the energy obtained for the WT and mutant ($\Delta\Delta G_b$). It is important to state that we are interested in the relative energy values for each considered substrate, since the analysis of the absolute values would require a more precise free energy calculation method. Interestingly, our results were consistent with the work of Hou and collaborators in which the binding energies of WT PR and its substrates were calculated [26].

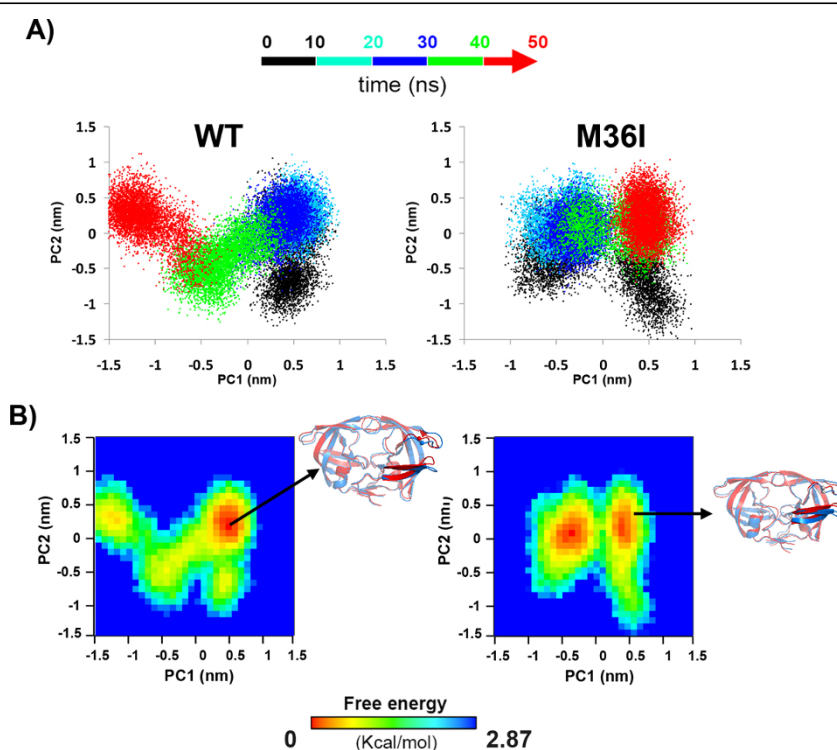


Figure 6 Principal component analysis of RH-IN PR complexes. A: The conformational sampling of WT (left) and M36I (right) PR in complex with RH-IN substrate was projected along the first two principal components for each transient conformer. The color code represents the temporal sequence of frames (0-10 ns: black, 10-20 ns: cyan, 20-30 ns: blue, 30-40 ns: green and 40-50 ns: red). B: the free energy landscape (FEL) analysis and representative structures from the WT (left) and M36I (right) MD trajectories. The FELs were obtained using the projections of PR C-alpha atoms position vectors onto the first two principal components as reaction coordinates. Free energy values calculated from the density of distribution are given in kcal/mol as indicated by the color bar.

Table 2 Binding energies (kcal/mol) between PR and its substrates calculated with MM/PBSA

		ΔG_{vdw}	ΔG_{ele}	$\Delta G_{sol/elec}$	$\Delta G_{sol/np}$	ΔG_b^a total	$\Delta \Delta G_b^b$
CA-p2	consB	-75.7 ± 4	-82 ± 6	92.2 ± 12.1	-7.1 ± 0.4	-72.6 ± 2.8	-4.1
	M36I	-73.5 ± 5	-75.3 ± 5	87.6 ± 11	-7.3 ± 0.3	-68.5 ± 2.9	
MA-CA	consB	-94.7 ± 4	-66.2 ± 9	141.3 ± 14	-8.5 ± 0.4	-28.1 ± 3.4	-7.2
	M36I	-84.4 ± 7	-70.4 ± 6	142.8 ± 14	-8.9 ± 0.4	-20.9 ± 3.1	
p1-p6	consB	-85.7 ± 3	47 ± 7	-12.7 ± 9.9	-7.4 ± 0.4	-58.8 ± 1.5	-1.6
	M36I	-79.9 ± 5	37.2 ± 8	-7.7 ± 8	-6.8 ± 0.3	-57.2 ± 1.3	
p2-NC	consB	-84.9 ± 4	-51.6 ± 5	57.7 ± 12.1	-7.5 ± 0.3	-86.3 ± 2.1	-4.8
	M36I	-79.6 ± 3	-64.3 ± 5	70.4 ± 13	-8 ± 0.3	-81.5 ± 2.3	
RH-IN	consB	-74.9 ± 6	-72.4 ± 6	113.4 ± 19	-7.3 ± 0.4	-41.2 ± 2.8	4.9
	M36I	-80.5 ± 7	-77.4 ± 9	120.5 ± 17	-8.7 ± 0.3	-46.1 ± 2.6	
RT-RH	consB	-77.6 ± 6	-307.1 ± 6	356.8 ± 14	-7.3 ± 0.4	-35.2 ± 1.9	0.6
	M36I	-76.5 ± 7	-298.1 ± 12	346.1 ± 12	-7.3 ± 0.3	-35.8 ± 1.5	

^aThe entropic contribution “ $-T\Delta S$ ”, is not included (see methods for details)

^bDifference from the WT binding energies ($\Delta \Delta G_b = \Delta G_b^{WT} - \Delta G_b^{M36I}$)

In general, the M36I-complexes presented lower affinity than the WT for the majority of substrates, yielding negative values for $\Delta \Delta G_b$. They also presented higher flexibility in the terminal residues of the substrate during the simulations (Figure 4).

For the RT-RH substrate, M36I substitution did not change the binding affinity ($\Delta \Delta G_b = 0.6$ Kcal/mol). By contrast, RH-IN substrate, is the only one for which we clearly see an increased binding to M36I PR ($\Delta \Delta G_b = 4.9$ Kcal/mol).

Because of the sequence differences of the substrates, various reasons seem to explain changes in binding affinities. In some cases, structural modifications introduced by the mutation were sufficient to explain the results; but in most of the cases, dynamics appeared to play a decisive role. The results of each substrate will be analyzed separately for sake of clarity:

CA-p2: The mutated enzyme presented weaker interaction in comparison with WT probably due to the decreased contact surface between the P4, P5 and P3' groups (alanine, lysine and alanine, respectively – as shown in Additional file 8) and to the higher flexibility of these terminal groups of the substrate (Figure 4 and 5). Consequently, electrostatic interactions were weakened leading to the difference in ΔG_{ele} .

MA-CA: Table 2 revealed stronger van der Waals interactions in the WT enzyme, which probably result from the higher stability of this form as compared with the M36I PR. Our ED analysis revealed a higher extent of sampling along the two principal components, which are related to motions on the ear to cheek region (Additional file 7). Considering that the strength of van der Waals interactions depends on the proximity between residues, the wider motions of the mutated enzyme might be the main explanation for the changes in binding affinities.

p1-p6: Similarly to the MA-CA complexes, the M36I PR presented more mobility along its two first principal

components (Additional file 7), which may be related to the decrease in van der Waals contributions (Table 2). In addition, these motions led to the exposure and to the decrease of the contact area of the non-polar proline at P4 position of the substrate (Additional file 8), thus leading to weaker solvation energies if compared to the more stable WT.

p2-NC: In this system, structural and dynamical elements explain the differences in binding energies. Again, the M36I form was more mobile along the high amplitude motions described by the first PCs. This behavior led to a considerable loss of contacts from the P4 to the P2' subsite, resulting in weaker van der Waals interactions and further exposing the non-polar residue at P4 similarly as observed in the p1-p6 complex.

RH-IN: This system was the only for which the WT presented weaker interaction between PR and the substrate ($\Delta \Delta G_b > 0$). Here dynamics seemed to play the central role since, as previously discussed, this was the only substrate, which was more stable when bound to the mutant (Figures 4, 5 and 6). This higher stability led a stronger interaction with the residue at the P4 position (arginine), therefore increasing ΔG_{ele} and ΔG_{vdw} absolute contribution. In addition, the mean contact area with this substrate was higher in the M36I form, which explains the increase in $\Delta G_{sol/np}$.

RT-RH: Here binding energies were practically the same. Accordingly our ED analysis, the mutated enzyme was more flexible than the WT (Additional file 7). However, we could observe that the conformational state reached at the end of the trajectory was similar for both systems.

Substrate contact-area, volume and cavities calculations

Ode et al suggested that the role of M36I mutation was to reduce the volume of the binding cavity in the inhibitor-bound state [14]. Although large deviations were

already observed in that study despite short dynamics (3 ns), we wondered if this behavior would be present in longer trajectories as we considered here (50 ns). Thus, we calculated and detected the protein cavities. Figure 7 shows the average structure and the average detected cavities in the trajectories. Then, we compared the main cavity, which corresponded to the active, for the WT and the mutant PR on all the systems by calculation of their overlap (see methods section). The overlap values range from 0.89 to 0.96, revealing very similar cavities and almost identical correspondence. We also compared the average active site of each protease (WT and mutant) in complex with the different substrates (Additional File 9).

The examination of the active site cavity volume along the MD time revealed variations during the time course of the simulations for both WT and mutant, but the average volumes observed were equivalent (Figure 7). This was in contradiction with the observations made in the previous study, and did not allow us to observe any significant variation of the binding cavity volume or surface-contact area between the substrate and PR (Additional file 8). Analysis of the contact-surface for each residue of the substrate, reveal some differences, as already discussed in the previous section, but no striking trend emerged.

Conclusions

In this study we systematically analyzed structural and dynamical features related to the impact of the M36I mutation on the interaction of PR with six of its natural substrates. The most recognizable feature related to changes in binding affinities was the increased mobility of the ear to cheek region, as revealed by essential dynamics analyses and MMPB/SA calculations. They were correlated to increased mobility of the substrate peptide. By contrast, we observed that global structural parameters such as the cavity volume or the solvent accessible surface were mostly unaffected by the presence of the mutation. Noticeably, however, the presence of the M36I mutation seems to influence the interactions pattern and mobility at the peptide ends.

Considering the catalytic efficiency of proteases carrying mutations far from the active site, Velazquez-Campoy *et al* suggested that while binding of small molecule inhibitors was very sensitive to subtle changes of the enzyme geometry, linear peptides substrates were able to undergo conformational changes and adapt to modified cavities [30]. Thus, the observed binding energy differences are consistent with that hypothesis. A possible explanation for the differences observed for the RH-IN system, may be the gain of contacts between one or more subsites with the mutation. Indeed, we noticed a decrease of contact area between the CA-p2, MA-CA, p1-p6, p2-NC

substrates and the mutant PR, in particular, interactions between the P3 and P4 groups, which were the most impacted by the presence of the mutation. By contrast, analysis of the RH-IN substrate showed that the interaction between the residue at the P4 and P5 positions and the M36I enzyme was considerably over that of the WT enzyme (Additional file 8). Interestingly, this analysis is in agreement with the results obtained from the binding energy analysis, since a higher contact is directly related to a gain in van der Waals contribution.

These affinity differences could influence in the long-term co-evolution of drug resistance-related mutations from both PR and substrate cleavage sites [31], since some of them impact in its dynamics. However, if one maintains the average substrate form (its envelope), that it known to guide the substrate binding/recognition, the PR will still performing its functions. In the case of inhibitors, the more specific interactions could be drastically changed, resulting in drug resistance.

Methods

Construction of M36I PR models

We have taken the following atomic coordinates from the Protein Data Bank (PDB) for the WT-PR in complex with the six substrates simulated in this work: CA-P2 (entry: 1F7A); MA-CA (1KJ4); p1-p6 (1KJF); p2-NC (1KJ7); RH-IN (1KJH); RT-RH (1KJG) [7,8]. To obtain the M36I PR structures in complex with each substrate, we carried out comparative modeling using each corresponding WT-PR crystallographic structures complex as a template. All models were built with Swiss-PDB-viewer and validated stereochemistry and energetically using Procheck and PROSA, as described in [13,16].

Molecular dynamics simulations

Molecular dynamics (MD) simulations, energy minimization and trajectory analyses were carried out with the GROMACS 4 package [32,33] using the AMBER ffamber99sb force-field [34]. Explicit TIP3P [35] water molecules were used in all simulations, with a 0.1 nm layer of water molecules (approximately 18500 depending on the system) added around the solute molecules in a triclinic water box, using periodic boundary conditions. Counter ions were inserted to neutralize the system in addition to NaCl in 0.15 M final concentration (Na^+ : 54 ± 1 ; Cl^- : 61 ± 1 depending on the system). LINCS [36] and SETTLE [37] were applied to constrain solute and solvent bonds, respectively. Temperature was kept at 300 Kelvin with a canonical rescaling approach [38]. The pressure was kept at 1 atm with the Berendsen approach [39]. Electrostatic interactions were calculated with the PME method [40], using non-bonded cutoffs of 1.0 nm for Coulomb and 1.2

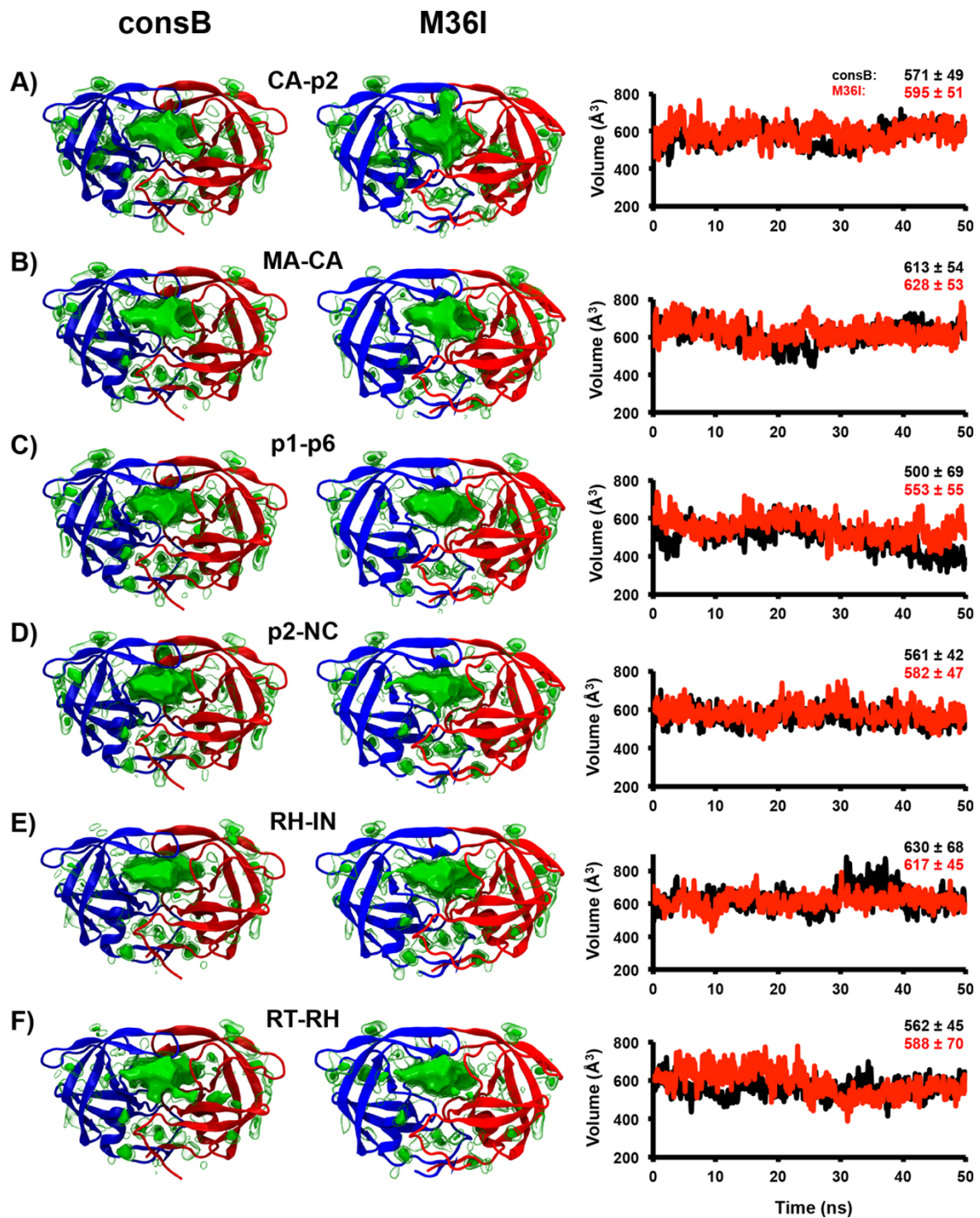


Figure 7 Topology of HIV-1 protease cavities. On the left: Time-average cavities extracted from the MD simulations represented as green surfaces. The substrates were removed and then the cavities were calculated and averaged. The biggest cavity, in all the systems, corresponded to the active site cleft. The homodimer protease was represented in cartoons colored by chain. Right: Time evolution of the volume of the main cavity (active site) during the MD simulations of the WT and M36I, in complex with the different ligands, colored as Fig.2. The average \pm SD values are indicated on the top part of each plot.

nm for van der Waals. The MD integration time-step was 2 fs.

A three-step energy minimization protocol was used to avoid artifacts in atomic trajectories due to conversion of potential into kinetic energies: first, we applied the steepest-descent algorithm: *i.* 5000 steps with protein heavy atom positions restrained to their initial positions using a harmonic constant of 1 kJ/mol.nm in each Cartesian direction, allowing unrestrained water and hydrogen movement; and *ii.* 5000 steps with all atoms free to move; *iii.* subsequently, the conjugated-gradient algorithm was applied for further minimize the energy until it reached a gradient of 42 kJ/mol.nm.

Next, we performed a heating procedure from 20 to 300 K (Additional file 1A). For this purpose we performed a 500 ps MD using a “reverse” simulated annealing procedure keeping the protein heavy atoms restrained to their initial positions (using the same harmonic restraint potential as above). So the velocities were initiated at an initial temperature of 20 K and we used the “annealing” option on the “.mdp” gromacs file to heat gradually the system until reach the requested temperature (300 K), in contrast to the conventional cooling protocol, as described in [17].

Subsequently, we performed an equilibration consisting in a preliminary MD (1.0 ns), gradually reducing the positional restraint potential from 50 to 0 kJ/mol.nm with successive MD simulations (100 ps) with restraints set to 50, 25, 10, 5, 1, 0.5, 0.1 and 0.05 kJ/mol.nm; followed by a 200 ps MD simulation with no position restraint (Additional file 1B). This procedure allows solvent and protein equilibration and avoids artifacts, as described in [17].

Clustering analysis

We applied the `g_cluster` module of GROMACS package to calculate the RMS clusters of PR backbone conformations, using the method of simple linkage (nearest neighbor) with a RMSD cut-off of 0.11 nm. For the substrates, we used an RMSD cut-off of 0.07 nm.

Cavity detections, volume and contact area calculation

Cavities were detected using an in-house software based on Lee and Richards solvent accessible surface detection algorithm [41]. Briefly, the space is divided in 0.5 Å edge length cells. Grid points accessible to a 1.4 Å radius sphere that does not overlap any protein atom are considered as void and set to 1. Grid points that are similarly accessible to a sphere of 10 Å not overlapping any protein atom are considered as bulk solvent and thus discarded (eventually set back to 0). A set of connected void grid points forms a cavity.

The volume of a cavity is approximated by multiplying the number of grid points defining it by the volume of a grid cell, which here is 0.125 Å³.

Conformations of each trajectory are aligned on the same reference structure using a least-square fit algorithm. Cavities are then detected for all the conformations (every 50 ps) after depletion of the peptide. The cavity of the catalytic site always corresponded to the biggest cavity of each conformation, and was kept for analysis. The average value of each grid point is then calculated along the trajectory, which defines the average cavity distribution D^i of the trajectory i .

The average cavity distributions of two different trajectories i and j are compared with their overlap O_{ij} , calculated as the Euclidean inner product of the distributions D^i and D^j divided by the geometrical mean of their Euclidean norms (k is an index running over all defined grid points):

$$O_{ij} = \frac{\sum_k D_k^i \cdot D_k^j}{\sqrt{\|D^i\| \|D^j\|}}$$

Values of O_{ij} range from 0 (totally different distributions) to 1 (identical cavity distributions).

To calculate the contact area between the substrates and PR, we employed the SURFINMD [13,42] based on Connolly's algorithm [43].

MM/PBSA calculations

The binding free energy was calculated using the MM/PBSA approach [44-48] in which ΔG is obtained according to Eq.1:

$$\Delta G_b = \Delta E_{MM} + \Delta G_{sol} - T\Delta S \quad (1)$$

Here, ΔG_b is the binding free energy in solution which is composed by the molecular mechanics (MM) interaction energy (ΔE_{MM}), the solvation free energy (ΔG_{sol}) and the conformational entropy contribution to binding ($-T\Delta S$). ΔG_{MM} corresponds to the sum of electrostatic (ΔE_{elec}) and van der Waals (ΔE_{vdw}) interaction energies between protein and ligand as follows (Eq. 2):

$$\Delta E_{MM} = \Delta E_{elec} + \Delta E_{vdw} \quad (2)$$

The solvation free energy contribution can be decomposed in two parts, the electrostatic ($\Delta G_{sol/elec}$) and non-polar ($\Delta G_{sol/np}$) terms. (3)

$$\Delta G_{sol} = \Delta G_{sol/elec} + \Delta G_{sol/np} \quad (3)$$

The electrostatic term is calculated with the APBS software [49], which solves the Poisson-Boltzmann numerically and calculates the electrostatic energy according to the electrostatic potential. It was given a dielectric constant of 1 for the interior of the protein. The reference system and the solvated had a solvent dielectric of 1 and 80, respectively. The electrostatic

energy of the reference system was subtracted from that of the solvated system to yield the solvation energy. The nonpolar contribution of the solvation free energy is computed as a function of the solvent accessible area (SAS) [50], as follows:

$$\Delta G_{\text{sol/np}} = \gamma (\text{SAS}) + b \quad (4)$$

In this equation, $\gamma=0.00542$ kcal/mol \AA^2 and $b=0.92$ kcal/mol. The SAS was estimated using a 1.4 \AA solvent probe radius with the *g_sas* module of GROMACS. The MM/PBSA calculations were performed in 100 snapshots collected from the last ns of each trajectory.

Principal Component Analysis (PCA) and ED analysis

We applied the *g_covar* module of GROMACS package to obtain the covariance matrix of C- α atomic positions from each 50 ns PR trajectory. Rotation and translation motions were removed prior to covariance matrix calculation by least-squares superposition to the averaged-structure. Each element of the covariance matrix *C* is represented by:

$$C_{ij} = \langle q_i - \langle q_i \rangle \langle q_j - \langle q_j \rangle \rangle \quad (5)$$

where q_i and q_j are the internal coordinates of atoms i and j . All analyses were performed with the *g_anaeig* module of GROMACS.

Cosine content analysis of the firsts PCs

As the time series of the first few principal components of simulations of large proteins often resemble cosines, we evaluated the cosine content of the first two principal components to exclude the interpretation of the random diffuse motions [51].

The cosine content c_i of the principal component p_i is obtained from:

$$c_i = \frac{2}{T} \left(\int \cos(i\pi t) p_i(t) dt \right)^2 \left(\int p_i^2(t) dt \right)^{-1} \quad (6)$$

where T is the total simulation time and $p_i(t)$ is the projection of the coordinates at time t on p_i . When c_i is close to 1 the large amplitude motions are not sampling the potential energy landscape at equilibrium but is in a non-equilibrated random diffusion regime. It has been demonstrated that insufficient sampling can also lead to high c_i values, representative of random motions. Its analysis was carried out with the *g_analyse* module of GROMACS.

Convergence of the essential subspace

We assume that the essential subspace of each system was defined by the five eigenvectors with higher eigenvalues (higher amplitudes) and the overlap between the essential subspace of two different groups was obtained from the RMSIP:

$$\text{RMSIP} = \frac{1}{5} \left(\sum_{i=1}^5 \sum_{j=1}^5 (n_i \cdot v_j)^2 \right)^{\frac{1}{2}} \quad (7)$$

where n_i and v_j are the eigenvector of different simulations (or subparts of the same simulation). The RMSIP measures how well the subspace defined by a giveset of modes (here we consider the five lowest-frequency PC modes) from a system (or a part of a MD trajectory) can include the motion indicated by the essential subspace from the other given system (or from other part of the same MD).

Free energy landscape (FEL)

We applied the *g_sham* module of GROMACS package to calculate the bi-dimensional representation of the FEL calculating the free energy (G) according to the probability of finding the system in a particular state α :

$$G_\alpha = -k_B T \ln \left[\frac{P(q_\alpha)}{P_{\text{max}}(q)} \right] \quad (8)$$

where k_B is the Boltzmann constant, T is the temperature of simulation; $P(q_\alpha)$ is an estimate of the probability density function obtained from a histogram of the projections of each conformation sampled during MD onto two reaction coordinates (q_i and q_j); $P_{\text{max}}(q)$ is the probability of the most visited state. We considered as reaction coordinates the first two principal component vectors, being the bi-dimensional FEL calculated from the joint probability distributions $P(q_i, q_j)$.

Additional material

Additional file 1: Summary of the heating and the equilibration procedures. In A, the time evolution of the temperature during the heating (from 20 K to 300 K), with the protein heavy atoms positions restrained by a harmonic potential (top). The RMSD of protein backbone atoms during the heating procedure (bottom). In B, the RMSD of protein backbone atoms during the equilibration procedure, in which the harmonic restraint potential was gradually decreased from 50 kJ/mol.nm to 0 kJ/mol.nm.

Additional file 2: Distribution of pairwise RMSD of proteases. From A to E is represented the distribution of pairwise RMSD distances for the PR in each simulated system (except RH-IN). Colored as Fig. 2.

Additional file 3: Flexibility of the PR residues. From A to F the RMS fluctuations calculated for PR backbone atoms is represented. Protein residues are numbered from 1-99 for chain A and for 100-198 for chain B, colored as in Fig. 2.

Additional file 4: Distribution of pairwise RMSD of substrates. Distribution of pairwise RMSD distances for the substrates backbone atoms when bound to the WT PR (black) or M36I (red). The RMSD between all the pairs of conformations recorded in each simulation were computed to graph their distribution.

Additional file 5: Significance of motions in the essential subspace. Cosine content analysis for the first two principal components (PC1 and PC2), during the trajectories. In Supplementary Table 1 (top) are

represented the cosine content of the first two PCs for the WT PR - substrates trajectories; in Supplementary Table 2 (bottom), those for the M36I PR.

Additional file 6: Convergence of the essential subspace. In A, root mean square inner products (RMSIP) of the first five principal components obtained from the two halves of each trajectory (0-5 ns, 0-10 ns, 0-15 ns, ..., 0-50 ns). In B, RMSIP between sequential parts of the trajectories (t1 in 0-1.25 ns and t2 in 1.25-2.5 ns and then, t1 in (n-2) 2.5-(n-1)2.5 ns and t2 in (n-1)2.5-n.25 ns, for n = 2 to 20). Values higher than 0.6 indicate satisfactory convergence of the simulations [24].

Additional file 7: Conformational sampling along the first two PC space. Conformational sampling of PR in complex with its substrates (except RH-IN as given in Fig. 6) obtained by bi-dimensional projection of the trajectories onto the first two PCs. Colored as in Fig. 6.

Additional file 8: Analysis of contact surface area. From A to F, the average contact surface area between each substrate residue and PR are represented for the WT and the mutant. In G, the total contact area between the substrates and the enzyme for each substrate complex. Colored as in Fig. 2.

Additional file 9: Similarities of the active site cleft of PR in complex with different substrates. Overlap of the active site cleft cavity of the enzyme in complex with different substrates was calculated for the WT RT (top); and for the M36I PR (bottom).

Competing interests

The authors declare that they have no competing interests.

Authors' contributions

TGGB and MGSC contributed equally to this work. TGGB carried out all the simulations and performed preliminary data analysis. MGSC carried out the data analysis and drafted the manuscript. PRB designed and coordinated the study, worked on data analysis and drafted the manuscript. ND performed the cavity analysis and dynamics studies. AB participated in data analysis, interpreting the study and drafted the manuscript. PMB and PGP designed and coordinated the study. All authors read and approved the final manuscript.

Acknowledgements

TGGB, MGSC, PGP, PMB and PRB thank FAPERJ, CNPq and CAPES for financial support. ND was supported by an AXA Research Fund PhD fellowship. This article has been published as part of *BMC Genomics* Volume 15 Supplement 7, 2014: Proceedings of the 9th International Conference of the Brazilian Association for Bioinformatics and Computational Biology (X-Meeting 2013). The full contents of the supplement are available online at <http://www.biomedcentral.com/bmcgenomics/supplements/15/S7>.

Authors' details

¹Programa de Computação Científica, Fundação Oswaldo Cruz, Rio de Janeiro - RJ, Brazil. ²Instituto de Biofísica Carlos Chagas Filho, Universidade Federal do Rio de Janeiro, 21949-901, Rio de Janeiro, Brazil. ³Unité de Bioinformatique Structurale, CNRS BSPCMI UMR 3528, Institut Pasteur, 75724, Paris Cedex 14, France.

Published: 27 October 2014

References

1. Tebit DM, Arts EJ: Tracking a century of global expansion and evolution of HIV to drive understanding and to combat disease. *Lancet Infect Dis* 2011, **11**(1):45-56.
2. Lessells RJ, Katzenstein DK, de Oliveira T: Are subtype differences important in HIV drug resistance? *Current opinion in virology* 2012, **2**(5):636-643.
3. Qiu X, Liu ZP: Recent developments of peptidomimetic HIV-1 protease inhibitors. *Current medicinal chemistry* 2011, **18**(29):4513-4537.
4. Perrymann AL, Lin JH, McCammon JA: HIV-1 protease molecular dynamics of a wild-type and of the V82F/I84V mutant: possible contributions to

- drug resistance and a potential new target site for drugs. *Protein Sci* 2004, **13**(4):1108-1123.
5. Batista PR, Pandey G, Pascutti PG, Bisch PM, Perahia D, Robert CH: Free Energy Profiles along Consensus Normal Modes Provide Insight into HIV-1 Protease Flap Opening. *Journal of Chemical Theory and Computation* 2011, **7**(8):2348-2352.
6. Batista PR, Robert CH, Marechal JD, Ben Hamida-Rebai M, Pascutti PG, Bisch PM, Perahia D: Consensus modes, a robust description of protein collective motions from multiple-minima normal mode analysis-application to the HIV-1 protease. *Phys Chem Chem Phys* 2010, **12**(12):2850-2859.
7. Prabu-Jeyabalan M, Nalivaika E, Schiffer CA: How does a symmetric dimer recognize an asymmetric substrate? A substrate complex of HIV-1 protease. *J Mol Biol* 2000, **301**(5):1207-1220.
8. Prabu-Jeyabalan M, Nalivaika E, Schiffer CA: Substrate shape determines specificity of recognition for HIV-1 protease: analysis of crystal structures of six substrate complexes. *Structure* 2002, **10**(3):369-381.
9. Nkengasong JN, Adje-Toure C, Weidle PJ: HIV antiretroviral drug resistance in Africa. *AIDS reviews* 2004, **6**(1):4-12.
10. Holguin A, Alvarez A, Soriano V: High prevalence of HIV-1 subtype G and natural polymorphisms at the protease gene among HIV-infected immigrants in Madrid. *Aids* 2002, **16**(8):1163-1170.
11. Papa A, Papadimitriou E, Papoutsis A, Antoniadis A: M36I, protease gene, HIV-1: resistant mutation or genetic polymorphism? *Aids* 2003, **17**(12):1858-1859.
12. Johnson VA, Calvez V, Gunthard HF, Paredes R, Pillay D, Shafer R, Wensing AM, Richman DD: 2011 update of the drug resistance mutations in HIV-1. *Topics in antiviral medicine* 2011, **19**(4):156-164.
13. Batista PR, Wilter A, Durham EH, Pascutti PG: Molecular dynamics simulations applied to the study of subtypes of HIV-1 protease common to Brazil, Africa, and Asia. *Cell biochemistry and biophysics* 2006, **44**(3):395-404.
14. Ode H, Matsuyama S, Hata M, Neya S, Kakizawa J, Sugiura W, Hoshino T: Computational characterization of structural role of the non-active site mutation M36I of human immunodeficiency virus type 1 protease. *Journal of molecular biology* 2007, **370**(3):598-607.
15. Alvizo O, Mittal S, Mayo SL, Schiffer CA: Structural, kinetic, and thermodynamic studies of specificity designed HIV-1 protease. *Protein Science* 2012, **21**(7):1029-1041.
16. Soares RO, Batista PR, Costa MG, Dardenne LE, Pascutti PG, Soares MA: Understanding the HIV-1 protease nelfinavir resistance mutation D30N in subtypes B and C through molecular dynamics simulations. *Journal of molecular graphics & modelling* 2010, **29**(2):137-147.
17. Batista PR, Costa MG, Pascutti PG, Bisch PM, de Souza W: High temperatures enhance cooperative motions between CBM and catalytic domains of a thermostable cellulase: mechanism insights from essential dynamics. *Phys Chem Chem Phys* 2011, **13**(30):13709-13720.
18. Ding F, Layten M, Simmerling C: Solution structure of HIV-1 protease flaps probed by comparison of molecular dynamics simulation ensembles and EPR experiments. *Journal of the American Chemical Society* 2008, **130**(23):7184-7185.
19. Sanches M, Krauchenco S, Martins NH, Gustchina A, Wlodawer A, Polikarpov I: Structural characterization of B and non-B subtypes of HIV-1 protease: insights into the natural susceptibility to drug resistance development. *Journal of molecular biology* 2007, **369**(4):1029-1040.
20. Ode H, Yokoyama M, Kanda T, Sato H: Identification of folding preferences of cleavage junctions of HIV-1 precursor proteins for regulation of cleavability. *Journal of molecular modeling* 2011, **17**(2):391-399.
21. Costa MG, Batista PR, Shida CS, Robert CH, Bisch PM, Pascutti PG: How does heparin prevent the pH inactivation of cathepsin B? Allosteric mechanism elucidated by docking and molecular dynamics. *BMC genomics* 2010, **11**(Suppl 5):S5.
22. Hayward S, de Groot BL: Normal Modes and Essential Dynamics. *Molecular Modeling of Proteins* 2008, **443**.
23. Amadei A, Ceruso MA, Di Nola A: On the convergence of the conformational coordinates basis set obtained by the essential dynamics analysis of proteins' molecular dynamics simulations. *Proteins* 1999, **36**(4):419-424.
24. Hess B: Convergence of sampling in protein simulations. *Physical review* 2002, **65**(3 Pt 1):031910.

25. Horta BA, Cirino JJ, de Alencastro RB: **On the structure, interactions, and dynamics of bound VEGF.** *Journal of molecular graphics & modelling* 2008, **26**(7):1091-1103.
26. Hou T, McLaughlin WA, Wang W: **Evaluating the potency of HIV-1 protease drugs to combat resistance.** *Proteins-Structure Function and Bioinformatics* 2008, **71**(3):1163-1174.
27. Ferguson DM, Radmer RJ, Kollman PA: **Determination of the relative binding free energies of peptide inhibitors to the HIV-1 protease.** *Journal of medicinal chemistry* 1991, **34**(8):2654-2659.
28. Hou T, Yu R: **Molecular dynamics and free energy studies on the wild-type and double mutant HIV-1 protease complexed with amprenavir and two amprenavir-related inhibitors: mechanism for binding and drug resistance.** *Journal of medicinal chemistry* 2007, **50**(6):1177-1188.
29. Stoica I, Sadiq SK, Coveney PV: **Rapid and accurate prediction of binding free energies for saquinavir-bound HIV-1 proteases.** *Journal of the American Chemical Society* 2008, **130**(8):2639-2648.
30. Velazquez-Campoy A, Todd MJ, Vega S, Freire E: **Catalytic efficiency and vitality of HIV-1 proteases from African viral subtypes.** *Proceedings of the National Academy of Sciences of the United States of America* 2001, **98**(11):6062-6067.
31. Ozen A, Haliloglu T, Schiffer CA: **HIV-1 Protease and Substrate Coevolution Validates the Substrate Envelope As the Substrate Recognition Pattern.** *J Chem Theory Comput* 2012, **8**(2):703-714.
32. Hess B, Kutzner C, Van Der Spoel D, Lindahl E: **GROMACS 4: Algorithms for Highly Efficient, Load-Balanced, and Scalable Molecular Simulation.** *Journal of chemical theory and computation* 2008, **4**(2):435.
33. Van der Spoel D, Lindahl E, Hess B, van Buuren AR, Apol E, Meulenhoff PJ, Tieleman DP, Sijbers ALTM, Feenstra KA, van Drunen R, Berendsen HJC: *Gromacs User Manual version 3.2* 2004.
34. Hornak V, Abel R, Okur A, Strockbine B, Roitberg A, Simmerling C: **Comparison of multiple Amber force fields and development of improved protein backbone parameters.** *Proteins* 2006, **65**(3):712-725.
35. Jorgensen WL, Chandrasekhar J, Madura JD, Impey RW, Klein ML: **Comparison of Simple Potential Functions for Simulating Liquid Water.** *Journal of Chemical Physics* 1983, **79**(2):926-935.
36. Hess B, Bekker H, Berendsen HJC, Fraaije JGEM: **LINCS: A linear constraint solver for molecular simulations.** *Journal of computational chemistry* 1997, **18**:1463-1472.
37. Miyamoto S, Kollman PA: **Settle - an Analytical Version of the Shake and Rattle Algorithm for Rigid Water Models.** *Journal of computational chemistry* 1992, **13**:952-962.
38. Bussi G, Donadio D, Parrinello M: **Canonical sampling through velocity rescaling.** *The Journal of chemical physics* 2007, **126**(1):014101.
39. Berendsen HJC, Postma JPM, Vangunsteren WF, Dinola A, Haak JR: **Molecular-Dynamics with Coupling to an External Bath.** *J Chem Phys* 1984, **81**:3684-3690.
40. Ulrich E, Lalith P, Max LB, Tom D, Hsing L, Lee GP: **A smooth particle mesh Ewald method.** *J Chem Phys* 1995, **103**:8577-8593.
41. Lee B, Richards FM: **The interpretation of protein structures: estimation of static accessibility.** *Journal of molecular biology* 1971, **55**(3):379-400.
42. Valiente PA, Batista PR, Pupo A, Pons T, Valencia A, Pascutti PG: **Predicting functional residues in Plasmodium falciparum plasmepsins by combining sequence and structural analysis with molecular dynamics simulations.** *Proteins* 2008, **73**(2):440-457.
43. Connolly ML: **Solvent-accessible surfaces of proteins and nucleic acids.** *Science* 1983, **221**(4612):709-713.
44. Kollman PA, Massova I, Reyes C, Kuhn B, Huo S, Chong L, Lee M, Lee T, Duan Y, Wang W, et al: **Calculating structures and free energies of complex molecules: combining molecular mechanics and continuum models.** *Accounts of chemical research* 2000, **33**(12):889-897.
45. Massova I, Kollman P: **Combined molecular mechanical and continuum solvent approach (MM-PBSA/GBSA) to predict ligand binding.** *Perspectives in Drug Discovery and Design* 2000, **18**(1):113-135.
46. Kuhn B, Gerber P, Schulz-Gasch T, Stahl M: **Validation and use of the MM-PBSA approach for drug discovery.** *Journal of medicinal chemistry* 2005, **48**(12):4040-4048.
47. Wang JM, Hou TJ, Xu XJ: **Recent Advances in Free Energy Calculations with a Combination of Molecular Mechanics and Continuum Models.** *Curr Comput-Aid Drug* 2006, **2**(3):287-306.
48. Hou TJ, Wang JM, Li YY, Wang W: **Assessing the Performance of the MM/PBSA and MM/GBSA Methods. 1. The Accuracy of Binding Free Energy Calculations Based on Molecular Dynamics Simulations.** *Journal of chemical information and modeling* 2011, **51**(1):69-82.
49. Baker NA, Sept D, Joseph S, Holst MJ, McCammon JA: **Electrostatics of nanosystems: application to microtubules and the ribosome.** *Proceedings of the National Academy of Sciences of the United States of America* 2001, **98**(18):10037-10041.
50. Sanner MF, Olson AJ, Spehner JC: **Reduced surface: an efficient way to compute molecular surfaces.** *Biopolymers* 1996, **38**(3):305-320.
51. Hess B: **Similarities between principal components of protein dynamics and random diffusion.** *Physical Review E* 2000, **62**(6):8438-8448.

doi:10.1186/1471-2164-15-S7-S5

Cite this article as: Costa et al: Impact of M36I polymorphism on the interaction of HIV-1 protease with its substrates: insights from molecular dynamics. *BMC Genomics* 2014 **15**(Suppl 7):S5.

Submit your next manuscript to BioMed Central and take full advantage of:

- Convenient online submission
- Thorough peer review
- No space constraints or color figure charges
- Immediate publication on acceptance
- Inclusion in PubMed, CAS, Scopus and Google Scholar
- Research which is freely available for redistribution

Submit your manuscript at
www.biomedcentral.com/submit

