



**HAL**  
open science

## Biofilms formed by gram-negative bacteria undergo increased lipid a palmitoylation, enhancing in vivo survival.

Sabina Chalabaev, Ashwini Chauhan, Alexey Novikov, Pavithra Iyer, Magdalena Szczesny, Christophe Beloin, Martine Caroff, Jean-Marc Ghigo

### ► To cite this version:

Sabina Chalabaev, Ashwini Chauhan, Alexey Novikov, Pavithra Iyer, Magdalena Szczesny, et al.. Biofilms formed by gram-negative bacteria undergo increased lipid a palmitoylation, enhancing in vivo survival.. mBio, 2014, 5 (4), 10.1128/mBio.01116-14 . pasteur-01381821

**HAL Id: pasteur-01381821**

**<https://pasteur.hal.science/pasteur-01381821>**

Submitted on 14 Oct 2016

**HAL** is a multi-disciplinary open access archive for the deposit and dissemination of scientific research documents, whether they are published or not. The documents may come from teaching and research institutions in France or abroad, or from public or private research centers.

L'archive ouverte pluridisciplinaire **HAL**, est destinée au dépôt et à la diffusion de documents scientifiques de niveau recherche, publiés ou non, émanant des établissements d'enseignement et de recherche français ou étrangers, des laboratoires publics ou privés.



Distributed under a Creative Commons Attribution - NonCommercial - ShareAlike 4.0 International License

# Biofilms Formed by Gram-Negative Bacteria Undergo Increased Lipid A Palmitoylation, Enhancing *In Vivo* Survival

Sabina Chalabaev,<sup>a</sup> Ashwini Chauhan,<sup>a</sup> Alexey Novikov,<sup>b\*</sup> Pavithra Iyer,<sup>a</sup> Magdalena Szczesny,<sup>a</sup> Christophe Beloin,<sup>a</sup> Martine Caroff,<sup>b</sup> Jean-Marc Ghigo<sup>a</sup>

Institut Pasteur, Unité de Génétique des Biofilms, Paris, France<sup>a</sup>; Equipe Endotoxines, Université de Paris-Sud, CNRS UMR 8621, IGM, Orsay, France<sup>b</sup>

\* Present address: Alexey Novikov, LPS-Biosciences, IGM, Orsay, France.

**ABSTRACT** Bacterial biofilm communities are associated with profound physiological changes that lead to novel properties compared to the properties of individual (planktonic) bacteria. The study of biofilm-associated phenotypes is an essential step toward control of deleterious effects of pathogenic biofilms. Here we investigated lipopolysaccharide (LPS) structural modifications in *Escherichia coli* biofilm bacteria, and we showed that all tested commensal and pathogenic *E. coli* biofilm bacteria display LPS modifications corresponding to an increased level of incorporation of palmitate acyl chain (palmitoylation) into lipid A compared to planktonic bacteria. Genetic analysis showed that lipid A palmitoylation in biofilms is mediated by the PagP enzyme, which is regulated by the histone-like protein repressor H-NS and the SlyA regulator. While lipid A palmitoylation does not influence bacterial adhesion, it weakens inflammatory response and enhances resistance to some antimicrobial peptides. Moreover, we showed that lipid A palmitoylation increases *in vivo* survival of biofilm bacteria in a clinically relevant model of catheter infection, potentially contributing to biofilm tolerance to host immune defenses. The widespread occurrence of increased lipid A palmitoylation in biofilms formed by all tested bacteria suggests that it constitutes a new biofilm-associated phenotype in Gram-negative bacteria.

**IMPORTANCE** Bacterial communities called biofilms display characteristic properties compared to isolated (planktonic) bacteria, suggesting that some molecules could be more particularly produced under biofilm conditions. We investigated biofilm-associated modifications occurring in the lipopolysaccharide (LPS), a major component of all Gram-negative bacterial outer membrane. We showed that all tested commensal and pathogenic biofilm bacteria display high incorporation of a palmitate acyl chain into the lipid A part of LPS. This lipid A palmitoylation is mediated by the PagP enzyme, whose expression in biofilm is controlled by the regulatory proteins H-NS and SlyA. We also showed that lipid A palmitoylation in biofilm bacteria reduces host inflammatory response and enhances their survival in an animal model of biofilm infections. While these results provide new insights into the biofilm lifestyle, they also suggest that the level of lipid A palmitoylation could be used as an indicator to monitor the development of biofilm infections on medical surfaces.

Received 26 March 2014 Accepted 7 July 2014 Published 19 August 2014

**Citation** Chalabaev S, Chauhan A, Novikov A, Iyer P, Szczesny M, Beloin C, Caroff M, Ghigo J-M. 2014. Biofilms formed by Gram-negative bacteria undergo increased lipid A palmitoylation, enhancing *in vivo* survival. *mBio* 5(4):e01116-14. doi:10.1128/mBio.01116-14.

**Invited Editor** Stephen Trent, University of Texas at Austin **Editor** Yves Brun, Indiana University

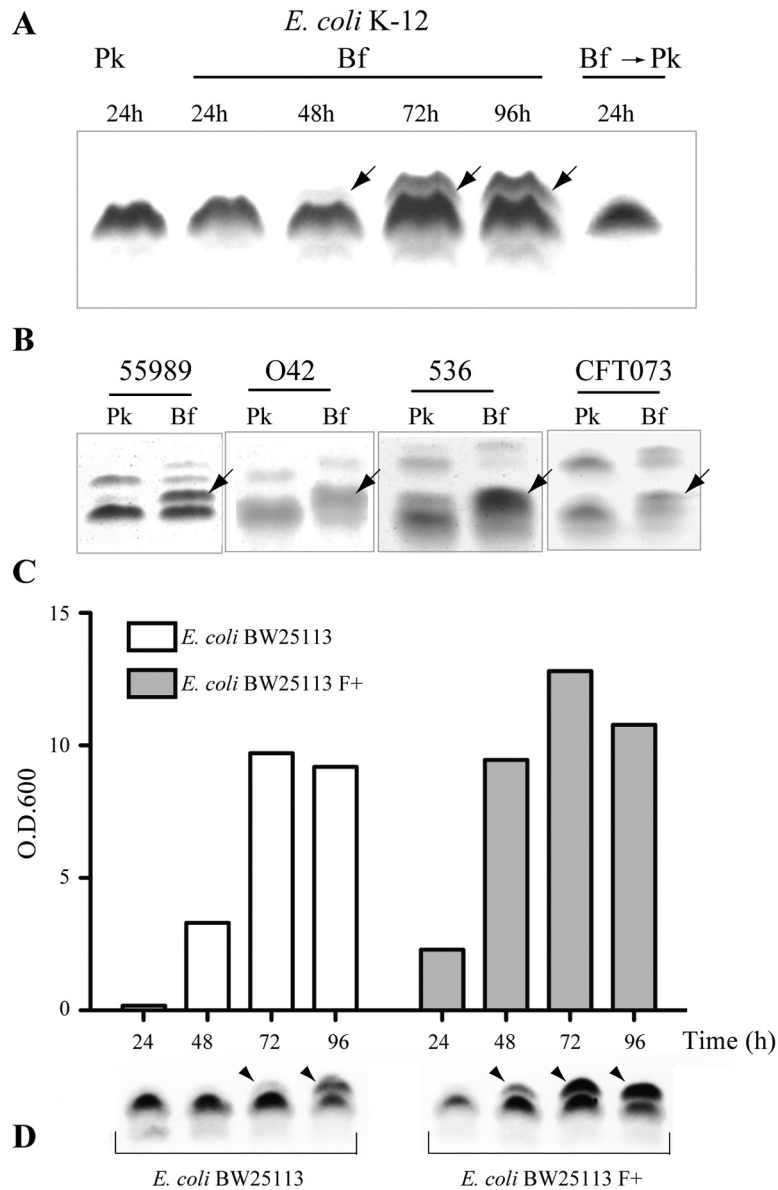
**Copyright** © 2014 Chalabaev et al. This is an open-access article distributed under the terms of the [Creative Commons Attribution-Noncommercial-ShareAlike 3.0 Unported license](#), which permits unrestricted noncommercial use, distribution, and reproduction in any medium, provided the original author and source are credited.

Address correspondence to Jean-Marc Ghigo, [jmghigo@pasteur.fr](mailto:jmghigo@pasteur.fr).

Biofilm communities developing on medical and industrial surfaces constitute a recognized reservoir of bacterial pathogens, and control of biofilm-associated infections is a major focus of microbiology at this time (1, 2). Identification of key biofilm determinants in several pathogens led to potential antibiofilm strategies based either on prevention of initial bacterial adhesion, inhibition of biofilm maturation, biofilm dispersion, or eradication of highly antibiotic-tolerant biofilm bacteria (3, 4). Study of gene expression and physiological changes occurring during biofilm formation suggested that specific molecules might be associated with the biofilm environment (5–8). Consistently, several compounds were shown to accumulate within biofilms, including biofilm matrix components, antiadhesion molecules, and amino acids (9–11).

We previously showed that formation of biofilms by certain

*Pseudomonas aeruginosa* strains induced reversible loss of lipopolysaccharide (LPS) O antigen and alteration of lipid A that contributes to modulating the host inflammatory response to *P. aeruginosa* biofilms (12). LPS is a major component of all Gram-negative bacterial outer membranes, and although its structure varies in response to certain environmental stimuli (13), few studies have investigated modifications in LPS structure in biofilms (12, 14, 15). Here, we compared *Escherichia coli* LPS from biofilm and planktonic bacteria and identified a reversible increased LPS modification corresponding to incorporation of a palmitate acyl chain to lipid A (palmitoylation) mediated by the PagP enzyme. While the appearance of this LPS modification is correlated to the ability of the bacteria to form biofilms, it occurs progressively and only after several days in very long stationary-phase culture bacteria. We show that *pagP* is negatively regulated

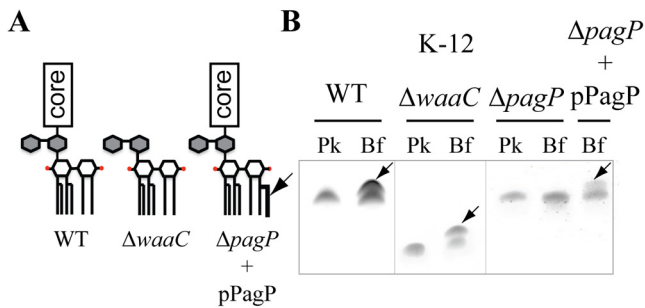


**FIG 1** LPS modification in *E. coli* biofilm bacteria. (A) Tricine SDS-PAGE/periodate-silver staining analysis of LPS extracted from planktonic (Pk) or biofilm (Bf) *E. coli* K-12 BW25113. The arrows indicate a modified LPS band. To assess whether biofilm bacteria reinoculated in planktonic conditions still display a modified LPS profile, bacteria grown for 96 h were recultured overnight in planktonic conditions (Bf → Pk). (B) LPS analysis of 24-h planktonic or 96-h biofilm cultures from pathogenic *E. coli* strains, including enteroaggregative *E. coli* (EAEC) strains 55989 and O42 and uropathogenic *E. coli* (UPEC) strains 536 and CFT073. (C) Comparison, at different time points, of biofilm biomass produced in continuous-flow microfermentors by *E. coli* K-12 BW25113 strain with its closely related derivative BW25113 F, carrying the biofilm-promoting F conjugative plasmid. O.D.600, optical density at 600 nm. (D) Tricine SDS-PAGE/periodate-silver staining analysis of LPS extracted from corresponding biofilm cultures.

by H-NS, which itself is under the biofilm-regulated control of the SlyA regulator. We demonstrate that increased lipid A palmitoylation in biofilm bacteria decreases the inflammatory response and increases biofilm bacterial survival in an *in vivo* rat model of catheter-associated biofilm infection. Since increased lipid A palmitoylation also occurs in biofilms formed by a wide range of Gram-negative bacteria, our study therefore identified a new biofilm phenotype, which could be used as a biofilm biomarker to monitor Gram-negative bacterial biofilm-associated infections.

## RESULTS

**Evidence for biofilm-associated LPS modification in *E. coli* biofilm.** To identify potential modifications of LPS in *E. coli* biofilms, we compared patterns of rough LPS (Ra, with no O antigen) produced in biofilm and planktonic *E. coli* K-12 BW25113 bacteria. Tricine SDS-PAGE analysis revealed that LPS extracted from 96-h mature biofilm grown in microfermentors with constant medium renewal had a higher molecular weight than LPS species extracted from 15- to 24-h overnight stationary-phase planktonic culture (Fig. 1A; see Fig. S1 in the supplemental material). An additional



**FIG 2** The LPS modification in *E. coli* biofilm bacteria is *pagP* dependent. (A) Schematic representation of rough LPS from wild-type (WT) *E. coli* K-12 BW25113,  $\Delta waaC$  mutant, and  $\Delta pagP$  mutant complemented with pPagP plasmid. (B) LPS analysis of 24-h planktonic (Pk) or 96-h biofilm (Bf) cultures from wild-type pathogenic *E. coli* K-12 strain and  $\Delta waaC$  mutant,  $\Delta pagP$  mutant, and  $\Delta pagP$  mutant complemented with plasmid pPagP.

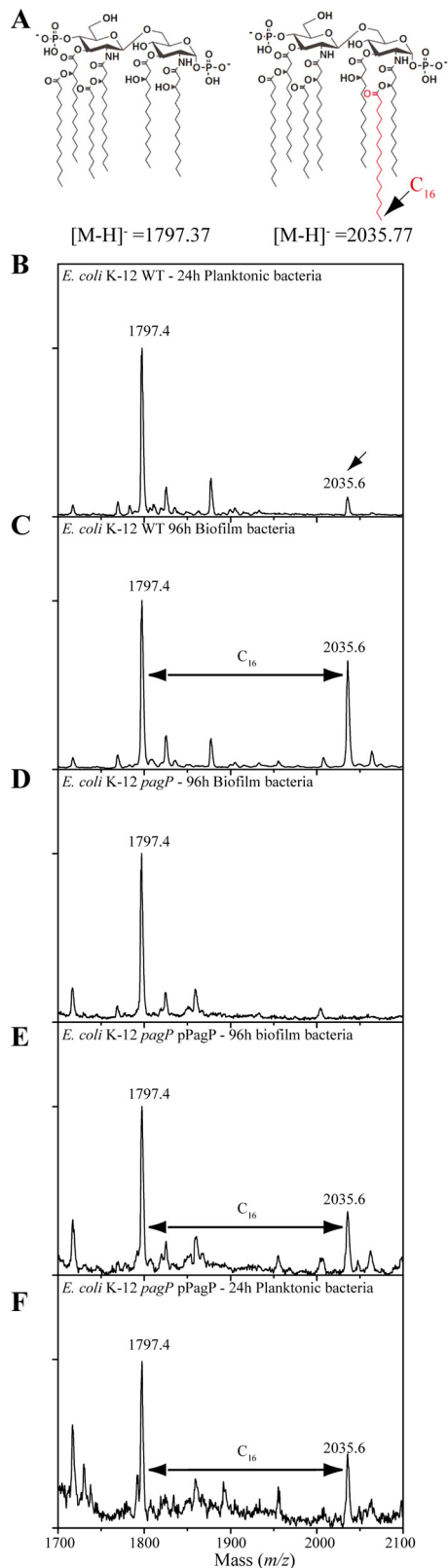
band was progressively detected along with aging biofilms and disappeared in LPS extracted from 96-h biofilm bacteria reinoculated under planktonic conditions (Fig. 1A). We also observed an additional LPS band associated with biofilms formed by various pathogenic *E. coli* strains (Fig. 1B). To further investigate the correlation between biofilm formation and appearance of the additional LPS band, we compared the *E. coli* BW25113 strain with its closely related derivative, the BW25113 F strain, forming more biofilm than BW25113 due to the presence of the biofilm-promoting F conjugative plasmid (Fig. 1C) (16). Analysis of LPS extracted from biofilms formed by *E. coli* BW25113 and BW25113 F strains at different time points showed that the additional LPS band appeared more rapidly in the BW25113 F strain (48 h versus 72 h) (Fig. 1D). Whereas this suggested a link between biofilm capacity and LPS modification, monitoring LPS profiles in planktonic cultures (without medium renewal) also revealed the emergence of the additional LPS band in aging planktonic culture (48 h and beyond) (see Fig. S2A in the supplemental material). In contrast, the regular renewal of the growth medium in these very late stationary-phase cultures, performed to limit nutrient exhaustion and approximate microfermentor conditions, significantly reduced the appearance of this band (Fig. S2B). These results therefore suggested that the studied LPS modification occurs in mature biofilms and under conditions created in unusually long planktonic cultures.

**LPS modification associated with Enterobacteriaceae biofilms corresponds to lipid A palmitoylation.** The presence of the additional band in LPS extracted from rough *E. coli* K-12, and enteropathogenic *E. coli* strains 55989 and O42 and uropathogenic 536 and CFT073 smooth *E. coli* strains (with O antigen) suggested that the modification occurs in the smallest common LPS part in all tested strains, corresponding to lipid A and the inner core. Moreover, detection of the additional band in LPS extracted from 96-h biofilms formed by *E. coli* K-12 BW25113 *waaC* deep rough mutant suggested that the biofilm-associated modification could take place on lipid A bound to a 3-deoxy-D-manno-octulosonic acid (Kdo) disaccharide part of the LPS (lipid A-Kdo<sub>2</sub>) (Fig. 2A and B). Of the *E. coli* enzymes potentially involved in chemical modifications of the lipid A-Kdo<sub>2</sub> portion, four are common to *E. coli* 55989, O42, 536, CFT073, and K-12 strains: ArnT (amino-arabinose addition to lipid A), EptA (phosphoethanolamine addition to lipid A), EptB (phosphoethanolamine addi-

tion to Kdo) and PagP (palmitate addition to lipid A) (17). We analyzed LPS extracted from planktonic (24-h) and biofilm (96-h) bacteria corresponding to *arnT*, *eptA*, *eptB*, and *pagP* *E. coli* mutants and detected the biofilm-associated LPS band in biofilm formed by all mutants except the *pagP* mutant (data not shown and Fig. 2B). Complementation of the *E. coli* *pagP* mutant by a plasmid expressing *pagP* restored LPS modification in 96-h biofilm bacteria (Fig. 2B). These results suggested lipid A palmitoylation in biofilm bacteria (18). Matrix-assisted laser desorption ionization–time of flight mass spectrometry (MALDI-TOF MS) analysis of lipid A in 24-h planktonic bacteria showed one major peak at  $m/z = 1,797.4$ , corresponding to a hexa-acylated non-palmitoylated lipid A species and only a minor species at  $m/z = 2,035.6$ , corresponding to a hepta-acylated palmitoylated lipid A species (Fig. 3A and B). In contrast, the spectrum obtained for 96-h biofilm showed two major peaks, at  $m/z = 1,797.4$  and  $m/z = 2,035.6$ , thereby indicating significant lipid A palmitoylation under biofilm conditions. We did not detect palmitoylated lipid A in *E. coli*  $\Delta pagP$  biofilm bacteria (Fig. 3D), while production of palmitoylated lipid A was restored upon complementation by plasmid pPagP under planktonic and biofilm conditions (Fig. 3E and F). MALDI-TOF MS analysis of LPS extracted from *E. coli* *waaC* deep rough (Re) mutant grown under planktonic condition already showed significant lipid A palmitoylation, potentially due to increased membrane stress-dependent *pagP* expression (19). However, comparison between planktonic and biofilm bacteria showed that the only detected modification occurring in biofilm is a difference at  $m/z = 2,035$  and  $m/z = 2,475$  peaks, corresponding to palmitoylated lipid A and palmitoylated lipid A-Kdo<sub>2</sub>, respectively (see Fig. S3 in the supplemental material). Finally, biofilm-associated lipid A palmitoylation is a general feature, since MALDI-TOF mass spectrometry analysis of lipid A extracted from biofilms formed by several pathogenic *E. coli* strains as well as various Gram-negative bacteria, including *Serratia marcescens*, *Pseudomonas aeruginosa*, *Klebsiella pneumoniae*, and *Citrobacter koseri* species, consistently showed increased levels of lipid A palmitoylation compared to corresponding planktonic cultures (Table 1 and Fig. S4A to S4D).

#### H-NS represses *pagP* transcription in planktonic cultures.

To investigate regulation of lipid A palmitoylation in biofilm, we introduced a *lacZ* transcriptional fusion downstream of the *pagP* stop codon in *E. coli* BW25113 (transcriptional operon fusion) and observed a 3-fold increase in  $\beta$ -galactosidase activity in 96-h biofilm compared to planktonic culture (Fig. 4A). Moreover, constitutive expression of *pagP* in *E. coli* BW25113 P<sub>cL</sub>-*pagP* led to production of the additional LPS band under both planktonic and biofilm conditions (Fig. 4B), suggesting that lipid A palmitoylation is regulated at the transcriptional level. Previous studies involved PhoP and EvgA as positive regulators of *pagP* expression in response to magnesium limitation (19, 20); however, deletion in these 2 genes had no effect on *pagP* expression or on the LPS profile, demonstrating that biofilm-associated palmitoylation is PhoP and EvgA independent (Fig. 4A and C). Interestingly, the emergence of the additional LPS band under very late stationary-phase conditions (96 h of planktonic culture) is also PhoP and EvgA independent and is not inhibited upon supplementation with excess magnesium in the culture medium (see Fig. S5A in the supplemental material). Moreover, inactivation of various stress response regulators, including *cpxB*, *rcsB*, *pspF*, *oxyR*, *soxR*, *arcA*, *rpoS*, *relA*, and *luxS*, had no impact on lipid A palmitoylation



**FIG 3** *E. coli* biofilm bacteria add a palmitate chain to their lipid A. (A) Proposed structures corresponding to major peaks detected by MALDI-TOF mass spectrometry, according to previously reported structures of Gram-negative bacterial lipid A. (B to F) MALDI-TOF analysis of lipid A extracted from *E. coli* K-12 BW25113 bacteria. The *E. coli* K-12 BW25113 bacteria were (Continued)

**TABLE 1** Lipid A palmitoylation level in 24-h planktonic and 96-h biofilm bacteria of different Gram-negative bacterial species<sup>a</sup>

Bacterial species	Palmitoylation level <sup>b</sup>		
	Pk	Bf	Bf/Pk ratio <sup>c</sup>
<i>E. coli</i> strains			
K-12 BW25113	0.1	0.6	6
K-12 BW25113 $\Delta waaC$	0.94	1.35	1.4
55989	0.3	1.1	3.7
O42	0.62	1.3	2.1
536	1	1.35	1.35
CFT073	0.96	1.72	1.8
<i>Citrobacter koseri</i>	1.2	2.7	2.3
<i>Serratia marcescens</i> SM365	2.4	4.3	1.8
<i>Klebsiella pneumoniae</i> strains			
LM21	0.6	1.4	2.3
CH994	0.9	1.5	2.3
CH995	0.6	1.4	1.6
CH996	0.6	1.2	2.3
<i>Pseudomonas aeruginosa</i> strains			
PA14	0.12	0.16	1.3
BJN8	0.23	0.5	2.17
BJN33	0.6	1.1	1.83
BJN53	0.1	0.34	3.4

<sup>a</sup> Some of the corresponding spectra can be found in Fig. 2 and in Fig. S3 and S4 in the supplemental material.

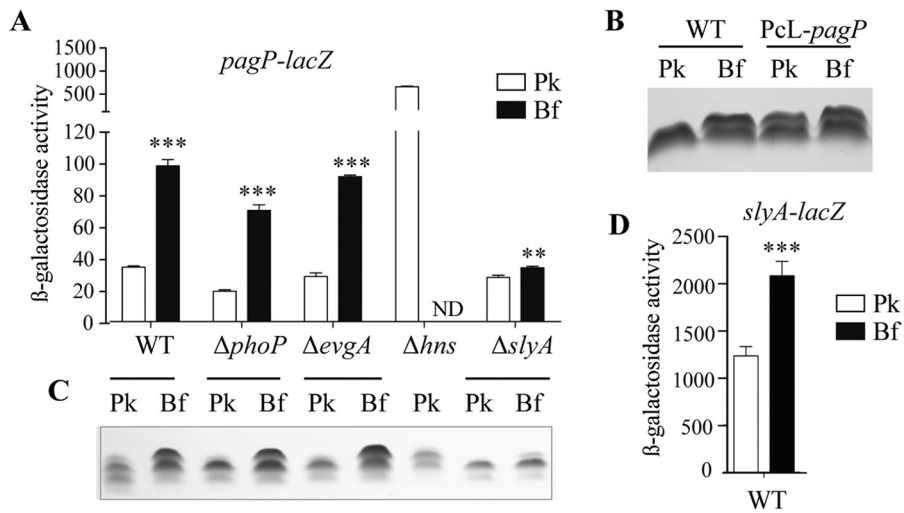
<sup>b</sup> The palmitoylation level was determined as the peak area of the major palmitoylated species, normalized by the peak area of the corresponding nonpalmitoylated species (Fig. S4).

<sup>c</sup> Ratio of the palmitoylation level in biofilm to the palmitoylation level in planktonic conditions, with all other conditions identical in the analysis.

(Fig. S5B). To identify regulators of *pagP* expression in *E. coli*, we took advantage of the white color displayed by *E. coli* BW25113 *pagP-lacZ* colonies on 5-bromo-4-chloro-3-indolyl- $\beta$ -D-galactopyranoside (X-Gal) agar plates, and we used TnSC189 *mariner*-based transposon mutagenesis to screen for blue BW25113 *pagP-lacZ* mutants derepressed for *pagP* expression. We identified 7 dark blue colonies corresponding either to trivial TnSC189 insertion upstream of the *pagP-lacZ* fusion or to insertion into the *hns* gene, which encodes the global silencing protein repressor H-NS (21). To confirm the role of H-NS in *pagP* expression, we monitored *pagP* expression in *E. coli* BW25113  $\Delta hns$  *pagP-lacZ* planktonic cultures and observed 18-fold-increased *pagP* expression in the *hns* deletion mutant compared to the parental strain (Fig. 4A). Consistent with this result, the previously biofilm-associated LPS band could be detected in 24-h planktonic bacteria in LPS extracted from *E. coli*  $\Delta hns$  *pagP-lacZ* mutant (Fig. 4C). Since the ability of this mutant to form a biofilm was strongly affected, we could not meaningfully monitor *pagP* expression or LPS palmitoylation in biofilms. Complementation of the  $\Delta hns$  *pagP-lacZ* mutant with plasmid pBAD33-*hns* decreased

#### Figure Legend Continued

24-h planktonic bacteria (B), 96-h BW25113 biofilm bacteria (C), 96-h BW25113  $\Delta pagP$  biofilm bacteria (D), 96-h BW25113  $\Delta pagP$  mutant biofilm bacteria complemented with plasmid pPagP (E), and 96-h BW25113  $\Delta pagP$  mutant planktonic bacteria complemented with plasmid pPagP (F).



**FIG 4** Lipid A palmitoylation is transcriptionally regulated by H-NS and SlyA. (A) *E. coli* BW25113 *pagP-lacZ* strains with the *phoP*, *evgA*, *hns*, or *slyA* gene deleted were grown overnight in planktonic conditions (Pk) or in biofilms (Bf) for 96 h.  $\beta$ -Galactosidase activity was measured. Values are means plus standard deviations (SDs) from three independent experiments. Statistical significance was assessed using an unpaired *t* test. Values for planktonic bacteria that are significantly different from the values for biofilm bacteria are indicated by asterisks as follows: \*\*,  $P < 0.01$ ; \*\*\*,  $P < 0.001$ . ND, not determined. (B) Tricine SDS-PAGE analysis of LPS from *E. coli* BW25113 and BW25113 Pcl-*pagP*, which constitutively expresses the *pagP* gene, grown in planktonic cultures (Pk) overnight or in biofilms (Bf) for 96 h. (C) LPSs from the strains shown in panel A were analyzed by Tricine SDS-PAGE. (D) The *E. coli* BW25113 *slyA-lacZ* strain was grown overnight under planktonic conditions (Pk) or in biofilms (Bf) for 96 h, and  $\beta$ -galactosidase activity was measured.

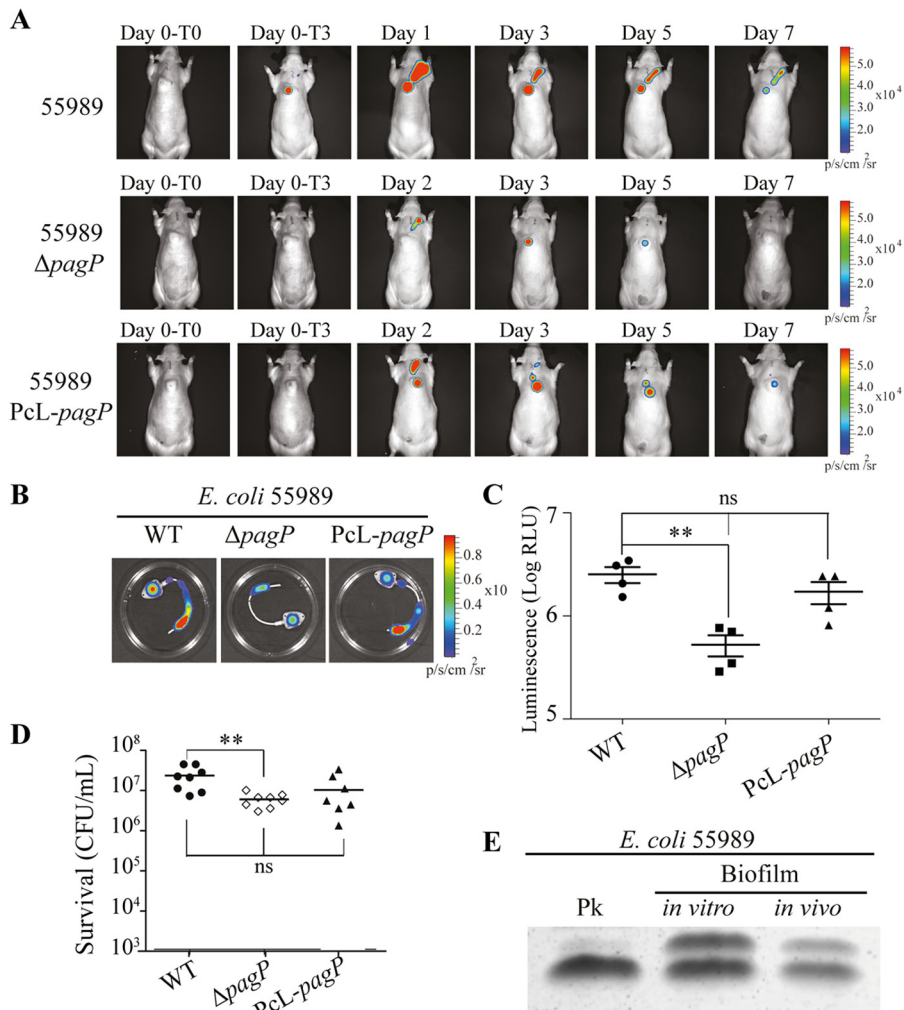
expression of *pagP* (Fig. S6A), therefore demonstrating that H-NS represses lipid A palmitoylation in *E. coli* planktonic bacteria.

**The anti-H-NS factor SlyA activates *pagP* transcription in mature biofilms.** Increased *pagP* expression under mature biofilm conditions suggested potential alleviation of H-NS repression by another *E. coli* regulator. Analysis of the *pagP* promoter region actually revealed three sequences closely matching the proposed consensus binding site for SlyA, an anti-H-NS factor that antagonizes H-NS binding on a number of cell envelope *E. coli* genes (see Fig. S6B in the supplemental material) (22–25). We therefore tested the contribution of SlyA to *pagP* regulation and compared *pagP* expression in *E. coli* BW25113 *pagP-lacZ* and BW25113  $\Delta$ *slyA* *pagP-lacZ* both under planktonic and biofilm conditions. We observed that a *slyA* deletion very significantly reduced *pagP* induction in biofilm, with only a 1.3-fold induction of *pagP* expression in the  $\Delta$ *slyA* background, compared to 2.9-fold induction observed in the wild-type (WT) background (Fig. 4A). Consistent with this result, analysis of LPS extracted from the  $\Delta$ *slyA* mutant showed only a minor modification of the LPS profile between planktonic and biofilm conditions (Fig. 4C). However, complementation of the *slyA* mutation in *E. coli*  $\Delta$ *slyA* *pagP-lacZ* mutant with plasmid pCA24N-*slyA* partially restored biofilm-associated induction of *pagP* expression (Fig. S6C). Finally, we compared *slyA* expression under planktonic and biofilm conditions, and we observed a 1.7-fold induction of *slyA* expression in biofilm, therefore confirming the role of SlyA in biofilm-associated *pagP* expression (Fig. 4D).

**Lipid A palmitoylation increases *in vivo* survival of biofilm bacteria.** To investigate the role of lipid A palmitoylation in biofilm bacteria, we first compared *E. coli* wild-type and  $\Delta$ *pagP* and Pcl-*pagP* mutant capacities to form *in vitro* biofilm on microtiter plates or continuous-flow microfermentors. We observed that neither the lack of, nor constitutive PagP-dependent palmitoylation, affected commensal *E. coli* BW25113 or pathogenic *E. coli*

55989 *in vitro* biofilm formation (see Fig. S7A and S7B in the supplemental material). We then used our previously described *in vivo* rat model of biofilm-associated infection in a totally implanted venous access port (TIVAP) (26) to compare the extent of *in vivo* biofilm development of bioluminescent wild-type,  $\Delta$ *pagP*, or Pcl-*pagP* *E. coli* 55989 derivatives in an inoculated TIVAP (Fig. 5A). Monitoring of bioluminescent biofilm biomass formed in an implanted TIVAP during the 7 days of the experiment showed a decrease in luminescence in the TIVAP colonized by *E. coli* 55989  $\Delta$ *pagP* compared to wild-type and Pcl-*pagP* strains (Fig. 5B and C). However, inoculated TIVAP showed no initial difference in CFU recovered 3 h after inoculation, indicating that the lack of lipid A palmitoylation has no effect on initial adhesion on TIVAP *in vivo* (Fig. S7C). Nevertheless, we observed a significant decrease in 55989  $\Delta$ *pagP* bacterial number at day 7 compared to TIVAP colonized with wild-type 55989 bacteria (Fig. 5D). Since *in vivo* formation of *E. coli* 55989 biofilm in the chamber of the implanted device also led to PagP-dependent modifications of the LPS profile (Fig. 5E), we investigated the potential contribution of lipid A palmitoylation to control of biofilm infection dynamics by the host.

Lipid A palmitoylation in *E. coli* was previously shown to decrease the inflammatory activity of lipid A (27). To test in a controlled manner whether nonpalmitoylated *E. coli* 55989  $\Delta$ *pagP* lipid A triggers a higher inflammatory response than palmitoylated biofilm bacteria, we injected *E. coli* 55989 wild-type  $\Delta$ *pagP* and Pcl-*pagP* biofilm bacteria intravenously into rats. Two hours after injection, we used rat serum enzyme-linked immunosorbent assay (ELISA) to measure the amount of interleukin-6 (IL-6) pro-inflammatory cytokine and observed a significant increase in the IL-6 level induced by *E. coli* 55989  $\Delta$ *pagP* biofilm bacteria compared to wild-type and Pcl-*pagP* bacteria (Fig. 6A). We consistently observed a 2-fold reduction in the release of IL-6 by the macrophage when brought into contact with bacteria producing



**FIG 5** *pagP*-dependent lipid A palmitoylation increases *in vivo* survival of biofilm bacteria. (A) Totally implanted venous access ports (TIVAPs) implanted in rats were inoculated with wild-type bioluminescent *E. coli* 55989,  $\Delta pagP$ , or PcL-*pagP* strain. The bioluminescent signal was monitored for 7 days after inoculation. T0, just before injection; T3, 3 h after injection. (B) Seven days after inoculation, the TIVAPs were flushed, rats were sacrificed 2 h after the TIVAPs were flushed, and the TIVAPs were removed. (C and D) The biofilm biomass was assessed by bioluminescence measurement (log relative luminescence units [RLU] [p/s/cm/s<sup>2</sup>]) (C) and by CFU count ( $n = 8$ ) (D). Each value represents the value for an individual rat. The means (short black lines)  $\pm$  standard deviations (error bars) for the groups of rats are shown in panel C. In panel D, the means (short black lines) for the groups of rats are shown. Values that are statistically significantly different ( $P < 0.01$ ) by an unpaired *t* test are indicated by bars and two asterisks. Values that are not significantly different are indicated by bars labeled ns. (E) *E. coli* 55989 was grown in 24-h planktonic cultures (Pk), in 96-h biofilm culture on a glass spatula (biofilm *in vitro*), or in TIVAPs implanted in rats for 7 days (biofilm *in vivo*). LPS extracts were analyzed by Tricine SDS-PAGE.

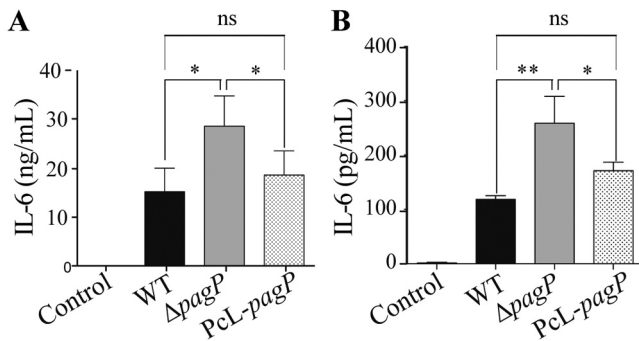
palmitoylated lipid A (Fig. 6B). Moreover, palmitoylated *E. coli* biofilm bacteria also displayed resistance to the antimicrobial peptide protegrin-1 (PG-1) compared to unpalmitoylated bacteria (see Fig. S8 in the supplemental material). Taken together, these results showed that lipid A palmitoylation increased biofilm bacteria survival *in vivo*, potentially by damping the inflammatory response to and host immune defenses against biofilm bacteria.

## DISCUSSION

LPS is a major structural component of the outer membrane of the Gram-negative bacterial envelope composed of three covalently linked domains, including the lipid A (or endotoxin) hydrophobic anchor, the core region, and the O-antigen polymer (28). LPS size and composition are highly dynamic and vary according to the strain and growth conditions, contributing to bacterial adaptation

to changing environments (29). Here we identified a new biofilm phenotype corresponding to a high level of lipid A palmitoylation in biofilms formed by various Gram-negative bacteria and depending on the outer membrane  $\beta$ -barrel palmitoyl transferase PagP.

Regulation of lipid A palmitoylation was previously studied as a response to a variety of host factors or conditions and shown to be both transcriptional and posttranslational (19, 30–32). Indeed, the PagP enzyme can remain dormant until its phospholipid substrates reach the external leaflet of the outer membrane, where the PagP active site is located. Migration of phospholipids to the external leaflet occurs in response to a variety of membrane perturbations, including antimicrobial peptides, chelating agents, or temperature shift (32). Alternatively, *pagP* transcription can also be induced in response to several cues, for instance to magnesium



**FIG 6** Lipid A palmitoylation decreases the inflammatory response to biofilm bacteria. (A) Biofilms of *E. coli* 55989 derivatives were grown on a glass spatula for 96 h and injected intravenously in rats ( $6.5 \times 10^8$  wild-type bacteria,  $4 \times 10^8$   $\Delta pagP$  bacteria,  $4 \times 10^8$  PcL- $pagP$  bacteria). Sera were collected 2 h after injection, and the amount of IL-6 was measured by ELISA (mean plus SD;  $n = 4$ ). (B) J774A.1 macrophage-like cells were infected at a multiplicity of infection of 0.3 for 2 h with *E. coli* 55989 derivatives grown on a glass spatula for 96 h. The amount of IL-6 in the supernatants was measured by ELISA (mean plus SD;  $n = 3$ ). Statistical significance was assessed using an unpaired *t* test. Values that are significantly different are indicated by bars and asterisks as follows: \*,  $P < 0.05$ ; \*\*,  $P < 0.01$ . Values that are not significantly different are indicated by bars labeled ns.

limitation, triggering the PhoP-PhoQ two-component regulatory system (32, 33).

Whereas the basal level of lipid A palmitoylation in *E. coli* LPS is very low in planktonic batch cultures (31), here, we identified biofilm as an environment naturally inducing palmitoylation of lipid A. We show that the PhoPQ system is not involved in biofilm-associated PagP-dependent lipid A palmitoylation, which is also not inhibited upon supplementation with excess magnesium in the culture medium. In contrast, we show that *pagP* expression is repressed by H-NS and that biofilm-associated induction of SlyA, a DNA binding protein that inhibits H-NS activity, leads to *pagP* derepression. Although the signal-inducing *slyA* and *pagP* expression in mature biofilm formed under continuous culture conditions is as yet unknown, we observed that lipid A palmitoylation was also SlyA and H-NS dependent and PhoP and EvgA independent in very late stationary-phase cultures grown over long incubation time (48 h and beyond). Interestingly, regular medium renewal in these extended planktonic cultures very significantly reduced lipid A palmitoylation. This suggests that lipid A palmitoylation could be induced by extreme physicochemical conditions present in both biofilm and very late stationary-phase planktonic cultures. Such conditions could correspond to general stress induced within inner biofilm layers, potentially including major nutrient starvation or microaerobic conditions. In this study, we showed, however, that inactivation of various envelope stress and general response regulators, including *cpxR*, *rdsB*, *pspF*, *oxyR*, *soxR*, *arcA*, *rpoS*, *relA*, and *luxS*, had no impact on lipid A palmitoylation. Alternatively, *slyA* and resulting *pagP* induction could also be triggered by the production of yet uncharacterized metabolites or a physiological process produced within biofilm and very late stationary-phase planktonic cultures. The contribution of other factors or conditions inducing lipid A palmitoylation in biofilm is under investigation.

Lipid A palmitoylation is known to stabilize the LPS outer membrane leaflet by increasing hydrophobic interactions between neighboring LPS molecules (34). Hence, palmitoylation of

lipid A could correspond to an adaptation to LPS destabilization potentially occurring under biofilm conditions wherein bacteria are subjected to various physical and chemical stresses (7, 35). However, we showed that lipid A palmitoylation does not contribute to the ability of *E. coli* to form biofilms *in vitro*. Although the biofilm biomass of a PcL-*pagP* strain that constitutively synthesizes palmitoylated lipid A is not significantly altered, measures were variable compared to those of the wild-type strain. This difference could indicate that deregulation of *pagP* expression and lipid A palmitoylation could be slightly detrimental for biofilm formation. In contrast, the absence of *pagP* reduces biofilm formation in a clinically relevant *in vivo* model of device infection in rat (26, 36). Palmitoylation of lipid A was shown to attenuate the Toll-like receptor 4 (TLR4)-mediated inflammatory response induced by lipid A (37). This is consistent with the fact that biofilm bacteria with palmitoylated lipid A also displayed decreased cytokine responses in macrophage culture cell lines and *in vivo*. Our results therefore suggest that lipid A palmitoylation protects biofilm bacteria from the host immune response and thus contributes to the general tolerance of bacterial biofilms during infections.

A biofilm is a highly heterogeneous environment in which bacteria undergo phenotypic differentiation, raising the question of the distribution of bacteria with palmitoylated lipid A within the biofilm population. Since our lipid A analyses were performed on all bacteria composing the biofilm, they likely reflect the average level of palmitoylation within a population composed of palmitoylated and nonpalmitoylated bacteria. Use of increased *pagP* and *slyA* expression as reporter tools will help clarify the spatial pattern of palmitoylation within biofilm microniches or layers.

Biofilm bacteria shed from colonized devices are sources of systemic bloodstream infections (38). In the absence of efficient methods to treat biofilms, replacement of contaminated devices is required in many clinical situations in order to prevent biofilm-associated infections (39, 40). Removal of implanted devices suspected of infection constitutes a difficult therapeutic decision, based as much on the nature of the pathogen colonizing the device than on actual evidence for the presence of biofilms (5). Currently, there is no routine approach to demonstrate the presence of biofilms on medical devices, and development of simplified detection methods could therefore assist clinicians in evaluating the extent of biofilm-associated risk of medical device infections (5). Our findings suggest that monitoring the lipid A palmitoylation level could be used as an indicator of the presence of high-density population of Gram-negative bacterial pathogens. While sensitivity and specificity issues will need to be addressed, we are currently evaluating whether clinical samples withdrawn from totally implantable venous access port of infected patients can be used to detect lipid A palmitoylation using immunoassay or mass spectrometry.

We showed that increased lipid A palmitoylation could be a widespread characteristic of Gram-negative bacterial biofilms. While the *pagP* gene is present in all sequenced *E. coli* and enterobacterial genomes, sequence analyses indicate that PagP homologs are also present in numerous other *Proteobacteria*, especially beta- and gammaproteobacteria. Interestingly, *P. aeruginosa* has a divergent homolog of enterobacterial PagP, and the analysis of four clinical strains showed increased level of lipid A palmitoylation in biofilms. Consistently, cystic fibrosis (CF) isolates that form biofilms in the lungs of CF patients also display palmitoylated lipid A, while isolates from patients with other conditions



and isolates from the environment do not (41, 42). Interestingly, *Salmonella enterica* serotype Typhimurium PagP enzyme was also recently shown to palmitoylate outer membrane glycerophospholipids and generate triacylated palmitoyl-glycerophospholipids (43). This therefore suggests that increased PagP activity in biofilms could also lead to increased palmitoylation of glycerophospholipids.

In conclusion, we showed that, in addition to known characteristic properties of biofilm bacteria, including tolerance to stress, 3-dimensional architecture, and production of extracellular matrix components, increased level of PagP activity leading to palmitoylation remodeling of lipid A constitutes a new biofilm-associated phenotype potentially contributing to resistance of Gram-negative bacterial biofilms to stress and host immune responses.

## MATERIALS AND METHODS

**Ethics statement.** Animals were housed in the Institut Pasteur animal facilities, accredited by the French Ministry of Agriculture for performing experiments on live rodents (permit A-75-1061). Work on animals was performed in compliance with French and European regulations on care and protection of laboratory animals (European Commission directive 2010/63; French law 2013-118, 6 February 2013). The protocols used in this study for the animal model, catheter placement, *in vivo* biofilm formation, and *in vivo* study of inflammatory responses were approved by the ethics committee of “Paris Centre et Sud no. 59” under reference no. 2012-0045.

**Bacterial strains and growth conditions.** Bacterial strains used in this study are described in Table S1 in the supplemental material. Antibiotics were used at the following concentrations: kanamycin, 50  $\mu\text{g}/\text{ml}$ ; chloramphenicol, 25  $\mu\text{g}/\text{ml}$ ; ampicillin, 100  $\mu\text{g}/\text{ml}$ ; and zeocin, 50  $\mu\text{g}/\text{ml}$ . Biofilm formation in continuous-flow microfermentors was performed as previously described in reference 16. Briefly, continuous-flow microfermentors containing a removable glass spatula were used as described (<http://www.pasteur.fr/recherche/unites/Ggb/matmet.html>) to maximize biofilm development and minimize planktonic growth. Inoculation was performed by dipping the glass spatula for 2 min in a culture adjusted to an optical density at 600 nm ( $\text{OD}_{600}$ ) of 1 from overnight bacterial cultures grown in M63B1 minimal medium [ $\text{KH}_2\text{PO}_4$  100 mM,  $(\text{NH}_4)_2\text{SO}_4$  15 mM,  $\text{MgSO}_4$  0.8 mM, vitamin B1 3  $\mu\text{M}$ , pH 7.4] supplemented with 0.4% glucose and the appropriate antibiotics. The spatula was then reintroduced into the microfermentor, and biofilm culture was performed at 37°C in M63B1 with glucose. Biofilm biomass produced at different time points was rapidly resuspended in 15 ml of microfermentor medium ( $\text{OD}_{600} < 0.01$ ), and biofilm bacterial LPS was analyzed after centrifugation and elimination of the resuspension supernatant.

Planktonic and biofilm cultures were performed in M63B1 medium supplemented with 0.4% glucose at 37°C.

**Transposon mutagenesis, strain construction, and molecular techniques.** TnSC189 *mariner*-based transposon of *E. coli* *pagP-lacZ* was performed as described in reference 44. Transposon insertion sites were determined as described in reference 45. Constitutive expression of the *pagP* gene was carried out by insertion of the previously described *ampPcL* genetic element in front of *pagP* at its native chromosomal location, leading to the constitutive expression of the *pagP* gene from the phage lambda constitutive promoter ( $\lambda\text{Pr}$ ) (23). Insertion of the *ampPcL* cassette and deletion of the *pagP* gene were performed using the  $\lambda$ -Red recombinase gene replacement system and a three-step PCR procedure described previously (46, 47). The primers used are listed in Table S2 in the supplemental material. When necessary, the antibiotic resistance marker of the inserted cassette was removed using the flippase-encoding pCP20 plasmid. For construction of *pagP-lacZ* and *slyA-lacZ* fusions, the same principle was used. The *lacZ-zeo* cassette was inserted downstream of the stop codon of the target gene. To construct *pagP-lacZ* derivatives, mutations

were transferred by P1vir transduction from Keio collection *E. coli* JW11116 ( $\Delta\text{phoP}$ ), JW2366 ( $\Delta\text{evgA}$ ), JW1225 ( $\Delta\text{hns}$ ), and JW5267 ( $\Delta\text{slyA}$ ) (48) mutants into the *E. coli* BW25113 *pagP-lacZ* strain. All constructs were confirmed by PCR and sequencing.

**LPS analysis by Tricine SDS-PAGE.** Bacteria ( $10^8$ ) were pelleted and resuspended in 100  $\mu\text{l}$  of lysing buffer (Bio-Rad) containing 1% SDS, 20% glycerol, 100 mM Tris (pH 6.8), and Coomassie blue G-250. Lysates were heated at 100°C for 10 min; then, proteinase K was added at 1 mg/ml and incubated at 37°C for 1 h. These samples (4  $\mu\text{l}$ ) were electrophoresed in a tricine SDS-PAGE system, which improves resolution of the low-molecular-weight LPS band, using a 4% stacking gel and a 20% separating gel (49). LPSs were then visualized by the periodate-silver staining method adapted from reference 50. Gels were immersed in fixing solution (30% ethanol, 10% acetic acid) for 1 h, washed three times for 5 min each time in water, oxidized in 0.7% periodic acid for 10 min, and washed three times for 5 min each time in water. Gels were then immersed for 1 min in 0.02% thiosulfate pentahydrate, rinsed quickly in water, and stained in 25 mM silver nitrate for 10 min. After a 15-s wash in water, gels were developed in 3.5% potassium carbonate and 0.01% formaldehyde. Development was stopped in 4% Tris base and 2% acetic acid for 30 min.

**Direct lipid A isolation from bacterial cells.** Lipid A was isolated directly by hydrolysis of bacterial cells as described in references 51 and 52. Briefly, 5 mg of lyophilized bacterial cells was suspended in 100  $\mu\text{l}$  of a mixture of isobutyric acid–1 M ammonium hydroxide (5:3 [vol/vol]) and kept for 1.5 h at 100°C in a screw-cap test tube in a Thermomixer system. The suspension was cooled in ice water and centrifuged ( $2,000 \times g$ , 5 min). The recovered supernatant was diluted with 2 volumes of water and lyophilized. The sample was then washed once with 100  $\mu\text{l}$  of methanol (by centrifugation at  $2,000 \times g$  for 5 min). Finally, lipid A was extracted from the pellet in 50  $\mu\text{l}$  of a mixture of chloroform, methanol, and water (3:1.5:0.25 [vol/vol/vol]).

**MALDI-TOF MS analysis.** LPS samples were dispersed in water at 1  $\mu\text{g}/\mu\text{l}$ . Lipid A extracts in chloroform-methanol-water were used directly in this mixture of solvents. In both cases, a few microliters of sample solution was desalted with a few grains of ion-exchange resin Dowex 50W-X8 ( $\text{H}^+$ ). Aliquots of 0.5 to 1  $\mu\text{l}$  of the solution were deposited on the target, and the spot was then overlaid with matrix solution and left to dry. Dihydroxybenzoic acid (DHB) (Sigma-Aldrich) was used as the matrix. It was dissolved at 10 mg/ml in 0.1 M citric acid solution in the same solvents as those used for the analytes (53). Different analyte/matrix ratios (1:2, 1:1, and 2:1 [vol/vol]) were tested to obtain the best spectra. Negative- and positive-ion mass spectra were recorded on a PerSeptive Voyager-DE STR time of flight mass spectrometer (Applied Biosystems) in the linear mode with delayed extraction. The ion-accelerating voltage was set at [minus]20 kV, and the extraction delay time was adjusted to obtain the best resolution and signal-to-noise ratio.

**$\beta$ -Galactosidase activity assay.** To determine the level of  $\beta$ -galactosidase enzyme activity, bacteria were grown in M63B1 minimal medium supplemented with 0.4% glucose for 24 h under planktonic conditions or for 96 h under continuous-flow biofilm conditions.  $\beta$ -Galactosidase activity was assayed in triplicate as described previously (54) and expressed in Miller units.

**Animal model. (i) Catheter placement.** Totally implanted venous access ports (TIVAPs) were surgically implanted in CD/SD (IGS:CrI) rats (Charles River) as described previously (26). Briefly, the port was implanted at dorsal midline toward the lower end of the thoracic vertebrae, and the catheter was inserted into the jugular vein. Prior to inoculation of clinical strains, all rats were checked for the absence of infection by plating 100  $\mu\text{l}$  blood and by monitoring rats for the absence of luminescence signals.

**(ii) TIVAP contamination in rats and *in vivo* biofilm formation.** The inoculum dose of  $10^4$  cells for overnight grown cultures of *E. coli* 55989 pAT881 wild type (WT),  $\Delta\text{pagP}$ , or *PcL-pagP* were injected into the port in a 50- $\mu\text{l}$  volume. Planktonic bacteria were removed after 3 h of injection. Progression of colonization was monitored using an IVIS100 imaging

system. Rats were sacrificed either 3 h or 7 days postinjection, and TIVAPs were harvested. Serial dilutions from samples were plated on LB agar medium for enumerating CFU/ml.

(iii) **In vivo inflammatory response.** To estimate the host inflammatory response due to LPS palmitoylation, *E. coli* 55989 WT,  $\Delta$ pagP, or P<sub>CL</sub>-pagP grown in a microfermentor for 4 days were adjusted to 10<sup>9</sup> cells per 500  $\mu$ l and injected into rats intravenously. Rats were sacrificed 2 h after injection, and blood was harvested aseptically and analyzed for IL-6 cytokine release in serum using ELISA.

**Statistical analysis.** Two-tailed unpaired Student *t* test analyses were performed using Prism 5.0 for Mac OS X (GraphPad Software, Inc.). Each experiment was performed at least 3 times. Statistical significance was indicated as follows: \*, *P* < 0.05; \*\*, *P* < 0.01; \*\*\*, *P* < 0.001.

## SUPPLEMENTAL MATERIAL

Supplemental material for this article may be found at <http://mbio.asm.org/lookup/suppl/doi:10.1128/mBio.01116-14/-DCSupplemental>.

- Table S1, PDF file, 0.1 MB.
- Table S2, PDF file, 0.1 MB.
- Figure S1, PDF file, 0.2 MB.
- Figure S2, PDF file, 0.1 MB.
- Figure S3, PDF file, 0.1 MB.
- Figure S4, PDF file, 0.2 MB.
- Figure S5, PDF file, 0.2 MB.
- Figure S6, PDF file, 0.1 MB.
- Figure S7, PDF file, 0.4 MB.
- Figure S8, PDF file, 0.1 MB.

## ACKNOWLEDGMENTS

We thank J.-M. Cavaillon for his interest throughout the course of this study. We thank S. L toff , D. Lebeaux, and O. Rendueles for critical reading of the manuscript.

This work was supported by grants from the Institut M rieux-Institut Pasteur collaborative research program and by the French Government's Investissement d'Avenir program, Laboratoire d'Excellence "Integrative Biology of Emerging Infectious Diseases" (grant ANR-10-LABX-62-IBRID).

## REFERENCES

- Hall-Stoodley L, Costerton JW, Stoodley P. 2004. Bacterial biofilms: from the natural environment to infectious diseases. *Nat. Rev. Microbiol.* 2:95–108. <http://dx.doi.org/10.1038/nrmicro821>.
- H iby N, Ciofu O, Johansen HK, Song ZJ, Moser C, Jensen PO, Molin S, Givskov M, Tolker-Nielsen T, Bjarnsholt T. 2011. The clinical impact of bacterial biofilms. *Int. J. Oral Sci.* 3:55–65. <http://dx.doi.org/10.4248/IJOS11026>.
- Rendueles O, Ghigo JM. 2012. Multi-species biofilms: how to avoid unfriendly neighbors. *FEMS Microbiol. Rev.* 36:972–989. <http://dx.doi.org/10.1111/j.1574-6976.2012.00328.x>.
- R mbling U, Balsalobre C. 2012. Biofilm infections, their resilience to therapy and innovative treatment strategies. *J. Intern. Med.* 272:541–561. <http://dx.doi.org/10.1111/joim.12004>.
- Hall-Stoodley L, Stoodley P, Kathju S, H iby N, Moser C, Costerton JW, Moter A, Bjarnsholt T. 2012. Towards diagnostic guidelines for biofilm-associated infections. *FEMS Immunol. Med. Microbiol.* 65:127–145. <http://dx.doi.org/10.1111/j.1574-695X.2012.00968.x>.
- Whiteley M, Bangera MG, Bumgarner RE, Parsek MR, Teitzel GM, Lory S, Greenberg EP. 2001. Gene expression in *Pseudomonas aeruginosa* biofilms. *Nature* 413:860–864. <http://dx.doi.org/10.1038/35101627>.
- Beloin C, Valle J, Latour-Lambert P, Faure P, Kzreminski M, Balestrino D, Haagensen JA, Molin S, Prensier G, Arbeille B, Ghigo JM. 2004. Global impact of mature biofilm lifestyle on *Escherichia coli* K-12 gene expression. *Mol. Microbiol.* 51:659–674. <http://dx.doi.org/10.1046/j.1365-2958.2003.03865.x>.
- Ghigo JM. 2003. Are there biofilm-specific physiological pathways beyond a reasonable doubt? *Res. Microbiol.* 154:1–8. [http://dx.doi.org/10.1016/S0923-2508\(02\)00012-8](http://dx.doi.org/10.1016/S0923-2508(02)00012-8).
- Valle J, Da Re S, Schmid S, Skurnik D, D'Ari R, Ghigo JM. 2008. The amino acid valine is secreted in continuous-flow bacterial biofilms. *J. Bacteriol.* 190:264–274. <http://dx.doi.org/10.1128/JB.01405-07>.
- Rendueles O, Travier L, Latour-Lambert P, Fontaine T, Magnus J, Denamur E, Ghigo JM. 2011. Screening of *Escherichia coli* species biodiversity reveals new biofilm-associated antiadhesion polysaccharides. *mBio* 2(3):e00043-11. <http://dx.doi.org/10.1128/mBio.00043-11>.
- Rendueles O, Beloin C, Latour-Lambert P, Ghigo JM. 2014. A new biofilm-associated colicin with increased efficiency against biofilm bacteria. *ISME J.* 8:1275–1288.
- Ciornei CD, Novikov A, Beloin C, Fitting C, Caroff M, Ghigo JM, Cavaillon JM, Adib-Conquy M. 2010. Biofilm-forming *Pseudomonas aeruginosa* bacteria undergo lipopolysaccharide structural modifications and induce enhanced inflammatory cytokine response in human monocytes. *Innate Immun.* 16:288–301. <http://dx.doi.org/10.1177/1753425909341807>.
- Raetz CR, Whitfield C. 2002. Lipopolysaccharide endotoxins. *Annu. Rev. Biochem.* 71:635–700. <http://dx.doi.org/10.1146/annurev.biochem.71.110601.135414>.
- Beveridge TJ, Makin SA, Kadurugamuwa JL, Li Z. 1997. Interactions between biofilms and the environment. *FEMS Microbiol. Rev.* 20:291–303. <http://dx.doi.org/10.1111/j.1574-6976.1997.tb00315.x>.
- Hansen SK, Rainey PB, Haagensen JA, Molin S. 2007. Evolution of species interactions in a biofilm community. *Nature* 445:533–536. <http://dx.doi.org/10.1038/nature05514>.
- Ghigo JM. 2001. Natural conjugative plasmids induce bacterial biofilm development. *Nature* 412:442–445. <http://dx.doi.org/10.1038/35086581>.
- Raetz CR, Reynolds CM, Trent MS, Bishop RE. 2007. Lipid A modification systems in gram-negative bacteria. *Annu. Rev. Biochem.* 76:295–329. <http://dx.doi.org/10.1146/annurev.biochem.76.010307.145803>.
- Bishop RE, Gibbons HS, Guina T, Trent MS, Miller SI, Raetz CR. 2000. Transfer of palmitate from phospholipids to lipid A in outer membranes of gram-negative bacteria. *EMBO J.* 19:5071–5080. <http://dx.doi.org/10.1093/emboj/19.19.5071>.
- Jia W, El Zoeiby A, Petruzzello TN, Jayabalasingham B, Seyedirashti S, Bishop RE. 2004. Lipid trafficking controls endotoxin acylation in outer membranes of *Escherichia coli*. *J. Biol. Chem.* 279:44966–44975. <http://dx.doi.org/10.1074/jbc.M404963200>.
- Eguchi Y, Okada T, Minagawa S, Oshima T, Mori H, Yamamoto K, Ishihama A, Utsumi R. 2004. Signal transduction cascade between EvgA/EvgS and PhoP/PhoQ two-component systems of *Escherichia coli*. *J. Bacteriol.* 186:3006–3014. <http://dx.doi.org/10.1128/JB.186.10.3006-3014.2004>.
- Dorman CJ. 2004. H-NS: a universal regulator for a dynamic genome. *Nat. Rev. Microbiol.* 2:391–400. <http://dx.doi.org/10.1038/nrmicro883>.
- Corbett D, Bennett HJ, Askar H, Green J, Roberts IS. 2007. SlyA and H-NS regulate transcription of the *Escherichia coli* K5 capsule gene cluster, and expression of slyA in *Escherichia coli* is temperature-dependent, positively autoregulated, and independent of H-NS. *J. Biol. Chem.* 282:33326–33335. <http://dx.doi.org/10.1074/jbc.M703465200>.
- Da Re S, Le Qu r  B, Ghigo JM, Beloin C. 2007. Tight modulation of *Escherichia coli* bacterial biofilm formation through controlled expression of adhesion factors. *Appl. Environ. Microbiol.* 73:3391–3403. <http://dx.doi.org/10.1128/AEM.02625-06>.
- McVicker G, Sun L, Sohanpal BK, Gashi K, Williamson RA, Plumbridge J, Blomfield IC. 2011. SlyA protein activates fimB gene expression and type 1 fimbriation in *Escherichia coli* K-12. *J. Biol. Chem.* 286:32026–32035. <http://dx.doi.org/10.1074/jbc.M111.266619>.
- Stapleton MR, Norte VA, Read RC, Green J. 2002. Interaction of the *Salmonella typhimurium* transcription and virulence factor SlyA with target DNA and identification of members of the SlyA regulon. *J. Biol. Chem.* 277:17630–17637. <http://dx.doi.org/10.1074/jbc.M110178200>.
- Chauhan A, Lebeaux D, Decante B, Kriegl I, Escande MC, Ghigo JM, Beloin C. 2012. A rat model of central venous catheter to study establishment of long-term bacterial biofilm and related acute and chronic infections. *PLoS One* 7:e37281. <http://dx.doi.org/10.1371/journal.pone.0037281>.
- Kawasaki K, Ernst RK, Miller SI. 2004. 3-O-deacylation of lipid A by PagL, a PhoP/PhoQ-regulated deacylase of *Salmonella typhimurium*, modulates signaling through Toll-like receptor 4. *J. Biol. Chem.* 279:20044–20048. <http://dx.doi.org/10.1074/jbc.M401275200>.
- Wang X, Quinn PJ. 2010. Lipopolysaccharide: biosynthetic pathway and structure modification. *Prog. Lipid Res.* 49:97–107. <http://dx.doi.org/10.1016/j.plipres.2009.06.002>.

29. Trent MS, Stead CM, Tran AX, Hankins JV. 2006. Diversity of endotoxin and its impact on pathogenesis. *J. Endotoxin Res.* 12:205–223. <http://dx.doi.org/10.1179/096805106X118825>.
30. Reinés M, Llobet E, Llompart CM, Moranta D, Pérez-Gutiérrez C, Bengoechea JA. 2012. Molecular basis of *Yersinia enterocolitica* temperature-dependent resistance to antimicrobial peptides. *J. Bacteriol.* 194:3173–3188. <http://dx.doi.org/10.1128/JB.00308-12>.
31. Zhou Z, Lin S, Cotter RJ, Raetz CR. 1999. Lipid A modifications characteristic of *Salmonella typhimurium* are induced by  $\text{NH}_4\text{VO}_3$  in *Escherichia coli* K12. Detection of 4-amino-4-deoxy-L-arabinose, phosphoethanolamine and palmitate. *J. Biol. Chem.* 274:18503–18514.
32. Bishop RE. 2008. Structural biology of membrane-intrinsic beta-barrel enzymes: sentinels of the bacterial outer membrane. *Biochim. Biophys. Acta* 1778:1881–1896. <http://dx.doi.org/10.1016/j.bbamem.2007.07.021>.
33. Guo L, Lim KB, Poduje CM, Daniel M, Gunn JS, Hackett M, Miller SI. 1998. Lipid A acylation and bacterial resistance against vertebrate antimicrobial peptides. *Cell* 95:189–198. [http://dx.doi.org/10.1016/S0092-8674\(00\)81750-X](http://dx.doi.org/10.1016/S0092-8674(00)81750-X).
34. Nikaido H. 2003. Molecular basis of bacterial outer membrane permeability revisited. *Microbiol. Mol. Biol. Rev.* 67:593–656. <http://dx.doi.org/10.1128/MMBR.67.4.593-656.2003>.
35. Prigent-Combaret C, Vidal O, Dorel C, Lejeune P. 1999. Abiotic surface sensing and biofilm-dependent regulation of gene expression in *Escherichia coli*. *J. Bacteriol.* 181:5993–6002.
36. Chauhan A, Lebeaux D, Ghigo JM, Beloin C. 2012. Full and broad-spectrum in vivo eradication of catheter-associated biofilms using gentamicin-EDTA antibiotic lock therapy. *Antimicrob. Agents Chemother.* 56:6310–6318. <http://dx.doi.org/10.1128/AAC.01606-12>.
37. Kawasaki K, Ernst RK, Miller SI. 2004. Deacylation and palmitoylation of lipid A by Salmonellae outer membrane enzymes modulate host signaling through Toll-like receptor 4. *J. Endotoxin Res.* 10:439–444. <http://dx.doi.org/10.1179/096805104225006264>.
38. Lebeaux D, Fernández-Hidalgo N, Chauhan A, Lee S, Ghigo JM, Almirante B, Beloin C. 2014. Management of infections related to totally implantable venous-access ports: challenges and perspectives. *Lancet Infect. Dis.* 14:146–159. [http://dx.doi.org/10.1016/S1473-3099\(13\)70266-4](http://dx.doi.org/10.1016/S1473-3099(13)70266-4).
39. Mermel LA, Allon M, Bouza E, Craven DE, Flynn P, O'Grady NP, Raad II, Rijnders BJ, Sherertz RJ, Warren DK. 2009. Clinical practice guidelines for the diagnosis and management of intravascular catheter-related infection: 2009 update by the Infectious Diseases Society of America. *Clin. Infect. Dis.* 49:1–45. <http://dx.doi.org/10.1086/599117>.
40. Zimmerli W, Moser C. 2012. Pathogenesis and treatment concepts of orthopaedic biofilm infections. *FEMS Immunol. Med. Microbiol.* 65: 158–168. <http://dx.doi.org/10.1111/j.1574-695X.2012.00938.x>.
41. Ernst RK, Moskowitz SM, Emerson JC, Kraig GM, Adams KN, Harvey MD, Ramsey B, Speert DP, Burns JL, Miller SI. 2007. Unique lipid A modifications in *Pseudomonas aeruginosa* isolated from the airways of patients with cystic fibrosis. *J. Infect. Dis.* 196:1088–1092. <http://dx.doi.org/10.1086/521367>.
42. Thaipisuttikul I, Hittle LE, Chandra R, Zangari D, Dixon CL, Garrett TA, Rasko DA, Dasgupta N, Moskowitz SM, Malmström L, Goodlett DR, Miller SI, Bishop RE, Ernst RK. 2014. A divergent *Pseudomonas aeruginosa* palmitoyltransferase essential for cystic fibrosis-specific lipid A. *Mol. Microbiol.* 91:158–174. <http://dx.doi.org/10.1111/mmi.12451>.
43. Dalebroux ZD, Matamouros S, Whittington D, Bishop RE, Miller SI. 2014. PhoPQ regulates acidic glycerophospholipid content of the *Salmonella typhimurium* outer membrane. *Proc. Natl. Acad. Sci. U. S. A.* 111: 1963–1968. <http://dx.doi.org/10.1073/pnas.1316901111>.
44. Ferrières L, Hémerly G, Nham T, Guérout AM, Mazel D, Beloin C, Ghigo JM. 2010. Silent mischief: bacteriophage Mu insertions contaminate products of *Escherichia coli* random mutagenesis performed using suicidal transposon delivery plasmids mobilized by broad-host-range RP4 conjugative machinery. *J. Bacteriol.* 192:6418–6427. <http://dx.doi.org/10.1128/JB.00621-10>.
45. Da Re S, Ghigo JM. 2006. A CsgD-independent pathway for cellulose production and biofilm formation in *Escherichia coli*. *J. Bacteriol.* 188: 3073–3087. <http://dx.doi.org/10.1128/JB.188.8.3073-3087.2006>.
46. Chaveroche MK, Ghigo JM, d'Enfert C. 2000. A rapid method for efficient gene replacement in the filamentous fungus *Aspergillus nidulans*. *Nucleic Acids Res.* 28:e97. <http://dx.doi.org/10.1093/nar/28.22.e97>.
47. Derbise A, Lesic B, Dacheux D, Ghigo JM, Carniel E. 2003. A rapid and simple method for inactivating chromosomal genes in *Yersinia*. *FEMS Immunol. Med. Microbiol.* 38:113–116. [http://dx.doi.org/10.1016/S0928-8244\(03\)00181-0](http://dx.doi.org/10.1016/S0928-8244(03)00181-0).
48. Baba T, Ara T, Hasegawa M, Takai Y, Okumura Y, Baba M, Datsenko KA, Tomita M, Wanner BL, Mori H. 2006. Construction of *Escherichia coli* K-12 in-frame, single-gene knockout mutants: the Keio collection. *Mol. Syst. Biol.* 2:0008. <http://dx.doi.org/10.1038/msb41000502006>.
49. Lesse AJ, Campagnari AA, Bittner WE, Apicella MA. 1990. Increased resolution of lipopolysaccharides and lipooligosaccharides utilizing Tricine-sodium dodecyl sulfate-polyacrylamide gel electrophoresis. *J. Immunol. Methods* 126:109–117. [http://dx.doi.org/10.1016/0022-1759\(90\)90018-Q](http://dx.doi.org/10.1016/0022-1759(90)90018-Q).
50. Tsai CM, Frasch CE. 1982. A sensitive silver stain for detecting lipopolysaccharides in polyacrylamide gels. *Anal. Biochem.* 119:115–119. [http://dx.doi.org/10.1016/0003-2697\(82\)90673-X](http://dx.doi.org/10.1016/0003-2697(82)90673-X).
51. El Hamidi A, Tirsoaga A, Novikov A, Hussein A, Caroff M. 2005. Microextraction of bacterial lipid A: easy and rapid method for mass spectrometric characterization. *J. Lipid Res.* 46:1773–1778. <http://dx.doi.org/10.1194/jlr.D500014-JLR200>.
52. Tirsoaga A, El Hamidi A, Perry MB, Caroff M, Novikov A. 2007. A rapid, small-scale procedure for the structural characterization of lipid A applied to *Citrobacter* and *Bordetella* strains: discovery of a new structural element. *J. Lipid Res.* 48:2419–2427. <http://dx.doi.org/10.1194/jlr.M700193-JLR200>.
53. Therisod H, Labas V, Caroff M. 2001. Direct microextraction and analysis of rough-type lipopolysaccharides by combined thin-layer chromatography and MALDI mass spectrometry. *Anal. Chem.* 73:3804–3807. <http://dx.doi.org/10.1021/ac010313s>.
54. Miller JH. 1992. A short course in bacterial genetics: a laboratory manual and handbook for *Escherichia coli* and related bacteria. Cold Spring Harbor Laboratory Press, Cold Spring Harbor, NY.