



**HAL**  
open science

## **Salmonella enterica serotype enteritidis in French Polynesia, South Pacific, 2008-2013.**

Simon Le Hello, Fiona Maillard, Henri-Pierre Mallet, Elise Daudens, Marc Levy, Valérie Roy, Philippe Branaa, Sophie Bertrand, Laetitia Fabre, François-Xavier Weill

► **To cite this version:**

Simon Le Hello, Fiona Maillard, Henri-Pierre Mallet, Elise Daudens, Marc Levy, et al.. Salmonella enterica serotype enteritidis in French Polynesia, South Pacific, 2008-2013.. Emerging Infectious Diseases, 2015, 21 (6), pp.1045-8. 10.3201/eid2106.141103 . pasteur-01159895

**HAL Id: pasteur-01159895**

**<https://pasteur.hal.science/pasteur-01159895>**

Submitted on 4 Jun 2015

**HAL** is a multi-disciplinary open access archive for the deposit and dissemination of scientific research documents, whether they are published or not. The documents may come from teaching and research institutions in France or abroad, or from public or private research centers.

L'archive ouverte pluridisciplinaire **HAL**, est destinée au dépôt et à la diffusion de documents scientifiques de niveau recherche, publiés ou non, émanant des établissements d'enseignement et de recherche français ou étrangers, des laboratoires publics ou privés.



Distributed under a Creative Commons Public Domain Mark 4.0 International License

# *Salmonella enterica* Serotype Enteritidis in French Polynesia, South Pacific, 2008–2013

Simon Le Hello, Fiona Maillard, Henri-Pierre Mallet, Elise Daudens<sup>1</sup>, Marc Levy, Valérie Roy, Philippe Branaa, Sophie Bertrand, Laetitia Fabre, François-Xavier Weill

Outbreaks of *Salmonella enterica* serotype Enteritidis infections associated with eggs occurred in French Polynesia during 2008–2013. Molecular analysis of isolates by using clustered regularly interspaced short palindromic repeat polymorphisms and multilocus variable-number tandem-repeat analysis was performed. This subtyping made defining the epidemic strain, finding the source, and decontaminating affected poultry flocks possible.

Over the past 2 decades, the incidence of *Salmonella enterica* serotype Enteritidis infections in humans has increased dramatically in all industrialized countries, with contaminated eggs the major source of infection (1,2). Despite a substantial decrease in outbreaks caused by this bacterium since the beginning of the 2000s, in particular in Europe due to the introduction of various control measures, *Salmonella* Enteritidis remains a major foodborne pathogen causing considerable human disease and high economic costs (3–5).

Different phenotypic and genotypic methods have been used to subtype *Salmonella* Enteritidis, including techniques such as phage typing and pulsed-field gel electrophoresis (PFGE). Results suggest the existence of major worldwide clones of *Salmonella* Enteritidis, of which most strains belong to phage type (PT) 4, followed by PT8 and PT1 (1,6). Recently, new methods such as standardized multilocus variable-number tandem-repeat analysis (MLVA) (7) and clustered regularly interspaced short palindromic repeats (CRISPR) typing (8,9) have been developed to subtype genetically homogeneous serotypes of *Salmonella*, in particular Enteritidis.

We report successive outbreaks of *Salmonella* Enteritidis in French Polynesia, South Pacific. To identify the

source and determine the molecular subtypes of *Salmonella* Enteritidis strains that are circulating, we performed a comprehensive molecular and epidemiologic study on human and nonhuman strains isolated in Tahiti during 2008–2013.

## The Study

Six cases of foodborne infection caused by *Salmonella* Enteritidis occurred on the island of Tahiti in October 2011, alerting public health authorities to an abnormal increase of these infections in humans. Epidemiologic and microbiological investigations confirmed that a tuna dish prepared with contaminated raw eggs was the food vehicle. Cases of *Salmonella* Enteritidis infection in Tahiti began to increase in July 2011, peaked in December 2011, and returned to baseline in April 2012; a total of 62 laboratory-confirmed cases occurred (Figure). A resurgence of 15 cases was registered during September–December 2012. Epidemiologic investigation by public health authorities revealed 20 clusters of cases (with a total of 54 cases) associated with the consumption of uncooked eggs produced by local layer farms. During November 2011–December 2012, a survey of 17 local poultry farms indicated the presence of *Salmonella* Enteritidis in 14 (1.9%) of 739 samples: 0 of 6 from drinking water sources, 0 of 15 from poultry feed, 3 (1.9%) of 155 from dust, 6 (1.5%) of 391 from feces, and 5 (2.9%) of 172 from eggs. The samples that tested positive were from 5 laying-hen houses on 2 farms that produce 3,000,000 eggs per year (70% of the local production).

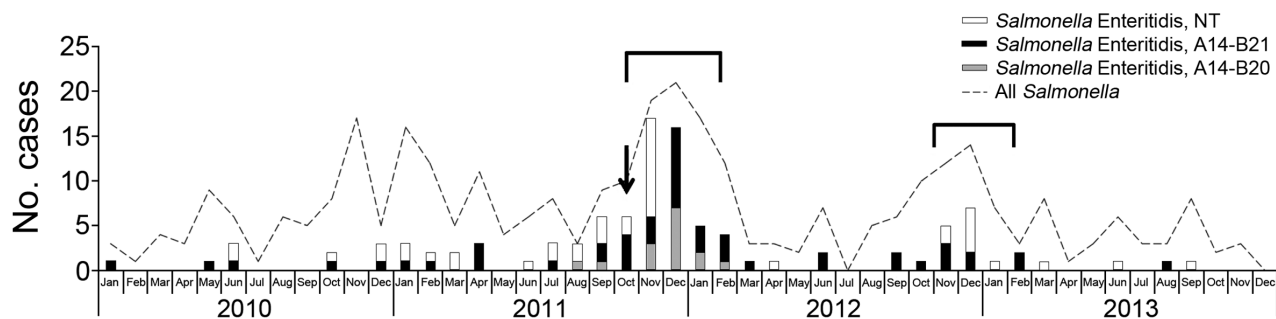
A total of 112 *Salmonella* Enteritidis strains isolated in French Polynesia were sent to the Centre National de Référence des *Escherichia coli*, *Shigella*, et *Salmonella* for further analysis. During January 2008–August 2013, a total of 111 strains were isolated (96 from humans, 1 from the tuna dish, and 14 from laying hens); in November 2014, 1 strain was isolated from an imported chicken product from the United States. All but 3 *Salmonella* Enteritidis strains were susceptible to all antimicrobial drugs tested (10); the remaining 3 showed single-drug resistance to amoxicillin (data not shown).

Analysis by PulseNet (<http://www.cdc.gov/pulsenet/pathogens/index.html>) standardized *Xba*I PFGE showed a similar common profile, named JEGX01.0004 in a previous study (11), in 46 of 47 selected strains from Tahiti (Tables 1, 2). Phage typing revealed mostly 2 types, PT8 (n = 8) and PT13a (n = 4), for strains with the JEGX01.0004

<sup>1</sup>Current affiliation: Cellule de l'Institut de Veille Sanitaire en Région Antilles Guyane, Fort de France, Martinique, France.

Author affiliations: Institut Pasteur, Paris, France (S. Le Hello, F. Maillard, L. Fabre, F.-X. Weill); Direction de la Santé de la Polynésie Française, Papeete, Tahiti, French Polynesia (H.-P. Mallet, E. Daudens); Centre Hospitalier de Polynésie Française, Papeete (M. Levy); Service du Développement Rural, Papeete (V. Roy); Institut Louis Malarde, Papeete (P. Branaa); Scientific Institute of Public Health, Brussels, Belgium (S. Bertrand)

DOI: <http://dx.doi.org/10.3201/eid2106.141103>



**Figure.** Number of confirmed cases of human infection with *Salmonella enterica* serotype Enteritidis per month and distribution of clustered regularly interspaced short palindromic repeats types, French Polynesia, 2010–2013. Arrow indicates when infections associated with tuna dish prepared with contaminated eggs occurred; brackets indicate periods of laying hen slaughters. NT, not typed.

profile. MLVA typing (7) on a subset of 60 strains showed main diversity in the SENTER4 and SENTER5 loci in isolates with the JEGX01.0004 PFGE profile. MLVA types 2-10-8-5-2 and 2-10-8-6-2 dominated in strains isolated from humans and laying hens. The CRISPR1 and CRISPR2 polymorphisms in 83 selected strains were studied by PCR amplification and sequencing as described elsewhere (9). The spacer content was determined by submitting the DNA sequences to the Institut Pasteur CRISPR database for *Salmonella* (<http://www.pasteur.fr/recherche/genopole/PF8/crispr/CRISPRDB>).

The 83 strains from French Polynesia had the same CRISPR1 allele (A14) but 2 different CRISPR2 alleles (B20 or B21), differing by the presence of a single spacer, EntB9 (online Technical Appendix 1, <http://wwwnc.cdc.gov/EID/article/21/6/14-1103-Techapp1.xlsx>; online Technical Appendix 2, [Techapp2.xlsx\). Both CRISPR2 alleles contained a triplication of the EntB8 spacer, which had not been observed in our database \(194 \*Salmonella\* Enteritidis strains from France and Europe during 1920–2014\) \(9\). However, this particular A14-B21 CRISPR profile is displayed by 37 \*Salmonella\* Enteritidis genomes deposited in the GenBank public database and originating in poultry or humans from North America \(8,11,12\) \(online Technical Appendix 3, <http://wwwnc.cdc.gov/EID/article/21/6/14-1103-Techapp3.xlsx>\).](http://wwwnc.cdc.gov/EID/article/21/6/14-1103-</a></p>
</div>
<div data-bbox=)

Locally, in the month after the outbreak associated with consumption of the tuna dish, different control measures were implemented, depending on whether eggs were contaminated. Workers at farm A, where eggs were contaminated by both A14-B20 and A14-B21 strains, slaughtered laying hens. At farm B, where contamination was revealed only by sampling dust and feces (with only an A14-B21 CRISPR profile for *Salmonella* Enteritidis), minimal sanitary

**Table 1.** CRISPR-type characteristics of 67 *Salmonella enterica* serotype Enteritidis clinical isolates from French Polynesia, 2008–2013, compared with major examples from the Institut Pasteur database\*

Country and period of isolation	No. isolates	Major PFGE types (no.)	Phage types available (no.)	CRISPR type allele1-allele2	MLVA type (no.)†
French Polynesia					
2008 Jan–2013 Aug	52	JEGX01.0004 (13)	PT8 (1), PT13a (2)	A14-B21	2-10-8-5-2 (20), 2-10-8-5-1 (1), 2-11-8-5-2 (6), 2-9-8-5-2 (5), 2-12-9-5-2 (1), 2-12-5-5-2 (1)
2011 Aug–2012 Feb	15	JEGX01.0004 (4)	PT8 (2)	A14-B20	2-10-8-6-2 (15)
France					
1957–2013	83	XEN-001 (57)	PT4 (45), PT1 (10), PT6 (6), PT21 (3), PT14b (1), PT22 (1), PT24 (1), PT34 (1), PT35 (1), PT44 (1)	A6-B7	3-11-5-4-1 (6), 3-11-5-6-1 (1), 3-10-5-4-2 (1), 3-10-5-4-1 (1)
2002	10	XEN-001 (10)	PT4 (6), PT35 (3), PT6a (1)	A8-B7	
1956–2014	8	XEN-001 (6)	PT4 (6)	A7-B7	2-9-4-5-1 (1), 1-8-9-4-1 (4)
1920–2001	7	XEN-001 (4) XEN-008 (2)	PT4 (6) PT6a (1)	A10-B7	
1956–2011	54	JEGX01.0004 (42)	PT8 (28), PT14b (12), PT13a (1), PT22 (1)	A14-B6	2-12-7-5-1 (1)

\*All available CRISPR-types, and the spacer content of each, are described in online Technical Appendix 1 (<http://wwwnc.cdc.gov/EID/article/21/6/14-1103-Techapp1.xlsx>). CRISPR, clustered regularly interspaced short palindromic repeats. †SENTER7-SENTER5-SENTER6-SENTER4-SE3.

**Table 2.** Epidemiologic data, antimicrobial susceptibility patterns, XbaI PFGE types, phage types, MLVA types, and CRISPR types of nonhuman *Salmonella enterica* serotype Enteritidis isolates from French Polynesia, 2011–2014\*

Period of isolation	Origin of sample	Sample type (no.)	No. isolates	Antimicrobial resistance profile (no.)	PFGE types (no.)	Phage types (no.)	CRISPR types, allele1-allele2 (no.)	MLVA type (no.)†
2011 Oct 25	Restaurant	Tuna dish with raw eggs	1	Susceptible	JEGX01.0004		A14-B20	2-10-8-6-2
2011 Nov–Jan 2012	Farm A	Egg (5), feces (1)	6	Susceptible (6)	JEGX01.0004 (5), XEN-033 (1)	8 (2), 23 (1)	A14-B21 (5), A14-B20 (1)	2-10-8-5-2 (4), 2-11-8-5-2 (1), 2-10-8-6-2 (1)
2011 Jan–2012 Dec	Farm B	Feces (5), dust (3)	8	Susceptible (8)	JEGX01.0004 (8)	8 (3), 13a (2)	A14-B21 (8)	2-10-8-5-2 (3), 2-11-8-5-2 (1), 2-9-8-5-2 (4)
2014 Nov	Imported chicken product	Legs—official control	1	NP	NP	NP	A14-B21	NP

\*The spacer content of each CRISPR-type is described in online Technical Appendix 1 (<http://wwwnc.cdc.gov/EID/article/21/6/14-1103-Techapp1.xls>). CRISPR, clustered regularly interspaced short palindromic repeats; MLVA, multilocus variable-number tandem-repeat analysis; NP, not performed; PFGE, pulsed-field gel electrophoresis. †SENTR7-SENTR5-SENTR6-SENTR4-SE3.

policies were implemented (i.e., thermally treating eggs, disinfecting laying houses). Consequently, the incidence of human *Salmonella* Enteritidis infections has declined markedly in Tahiti. The reisolation of A14-B21 *Salmonella* Enteritidis strains from humans and farm B at the end of 2012 necessitated stronger measures, including slaughtering more laying hens. In total, 120,000 hens were slaughtered, representing 50% of the stock in Tahiti, which caused an egg-production deficit. After this outbreak ended in 2013, production levels returned to normal. Furthermore, controls on imported chicken products have begun in French Polynesia, and in November 2014, a frozen chicken product from the United States tested positive for *Salmonella* Enteritidis A14-B21. Given that the poultry sector has been importing eggs and laying hens from North America for decades, that the A14-B21 CRISPR profile is prevalent in *Salmonella* Enteritidis genomes from North America, and that a A14-B21 *Salmonella* Enteritidis strain has recently been isolated from imported poultry from the United States since the implementation of control on imported poultry products and animals, it is likely that the epidemic *Salmonella* Enteritidis strain that was circulating in French Polynesia was imported from North America before 2008.

## Conclusions

When analyzed by classical subtyping methods, the *Salmonella* Enteritidis strains from French Polynesia displayed a very common and global profile, JEGX01.0004 PFGE type, PT8, and pansusceptibility to antimicrobial agents. Because of this, we used a combination of methods, such as CRISPR typing and MLVA, to more precisely define the epidemic strain and confirm that 2 local poultry farms were the source of the increase in human cases in Tahiti during July 2011–April 2012. By applying minimal to maximal control measures, depending on the CRISPR profile, and by sampling these flocks regularly, it became possible to follow and readjust the efficacy of the different control

measures taken by the 2 layer farms. We also demonstrated that the epidemic strain has been circulating in French Polynesia since at least 2008 and was probably imported from North America but has not been associated with human cases since 2014.

Given the signatures offered by the polymorphism of the 2 CRISPR loci in our study and in previous works (8, 9, 13), we are convinced that CRISPR DNA targets might be very helpful for subtyping *Salmonella*, including serotype Enteritidis. Furthermore, because the CRISPR spacer content can be extracted easily from short-read DNA sequences, in contrast to MLVA loci, it could be used to define particular *Salmonella* Enteritidis strains together with, or as an alternative to, core genome single nucleotide polymorphisms when whole-genome sequencing for foodborne pathogen surveillance and investigation are implemented in public health and veterinary laboratories (14).

## Acknowledgments

We are grateful to the microbiological laboratories in France and French Polynesia that participated in the human *Salmonella* network for isolate processing. We thank Véronique Guibert and Lucile Sontag for their excellent technical assistance and Donald White for his assistance in improving the manuscript.

The Centre National de Référence des *Escherichia coli*, *Shigella*, et *Salmonella* is co-funded by the Institut de Veille Sanitaire.

The Unité des Bactéries Pathogènes Entériques belongs to the Integrative Biology of Emerging Infectious Diseases Laboratory of Excellence funded by the French government's Investissement d'Avenir programme (grant no. ANR-10-LABX-62-IBEID).

Dr. Le Hello is a medical biologist and co-director of the Centre National de Référence des *Escherichia coli*, *Shigella*, et *Salmonella* at Institut Pasteur. His research interests are the molecular characterization of *Salmonella* populations and participating in outbreak investigations.

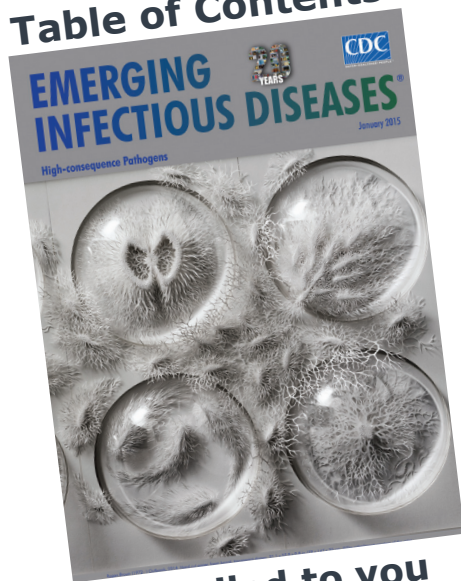


## References

1. Fisher IS; Enter-net participants. Dramatic shift in the epidemiology of *Salmonella enterica* serotype Enteritidis phage types in western Europe, 1998–2003—results from the Enter-net international *Salmonella* database. *Euro Surveill*. 2004;9:43–5.
2. Velge P, Cloeckaert A, Barrow P. Emergence of *Salmonella* epidemics: the problems related to *Salmonella enterica* serotype Enteritidis and multiple antibiotic resistance in other major serotypes. *Vet Res*. 2005;36:267–88. <http://dx.doi.org/10.1051/vetres:2005005>
3. European Commission. Commission regulation (EU) no. 517/2011 of 25 May 2011 implementing regulation (EC) no. 2160/2003 of the European Parliament and of the Council as regards a Union target for the reduction of the prevalence of certain *Salmonella* serotypes in laying hens of *Gallus gallus* and amending regulation (EC) no. 2160/2003 and commission regulation (EU) no. 200/2010 (text with EEA relevance) [cited 2015 Mar 30]. <http://eur-lex.europa.eu/legal-content/EN/TXT/?uri=CELEX:32011R0517>
4. Poirier E, Watier L, Espie E, Weill FX, De Valk H, Desenclos JC. Evaluation of the impact on human salmonellosis of control measures targeted to *Salmonella* Enteritidis and Typhimurium in poultry breeding using time-series analysis and intervention models in France. *Epidemiol Infect*. 2008;136:1217–24. <http://dx.doi.org/10.1017/S0950268807009788>
5. The European Union summary report on trends and sources of zoonoses, zoonotic agents and food-borne outbreaks in 2010. *EFSA Journal*. 2012;10:2597 [cited 2015 Mar 30]. <http://www.efsa.europa.eu/fr/efsajournal/doc/2597.pdf>
6. Pang JC, Chiu TH, Helmuth R, Schroeter A, Guerra B, Tsen HY. A pulsed-field gel electrophoresis (PFGE) study that suggests a major world-wide clone of *Salmonella enterica* serovar Enteritidis. *Int J Food Microbiol*. 2007;116:305–12. <http://dx.doi.org/10.1016/j.ijfoodmicro.2006.05.024>
7. Hopkins KL, Peters TM, de Pinna E, Wain J. Standardisation of multilocus variable-number tandem-repeat analysis (MLVA) for subtyping of *Salmonella enterica* serovar Enteritidis. *Euro Surveill*. 2011;16.
8. Liu F, Kariyawasam S, Jayarao BM, Barrangou R, Gerner-Smidt P, Ribot EM, et al. Subtyping *Salmonella enterica* serovar Enteritidis isolates from different sources by using sequence typing based on virulence genes and clustered regularly interspaced short palindromic repeats (CRISPRs). *Appl Environ Microbiol*. 2011;77:4520–6. <http://dx.doi.org/10.1128/AEM.00468-11>
9. Fabre L, Zhang J, Guigon G, Le Hello S, Guibert V, Accou-Demartin M, et al. CRISPR typing and subtyping for improved laboratory surveillance of *Salmonella* infections. *PLoS ONE*. 2012;7:e36995. <http://dx.doi.org/10.1371/journal.pone.0036995>
10. Le Hello S, Brisabois A, Accou-Demartin M, Josse A, Marault M, Francart S, et al. Foodborne outbreak and nonmotile *Salmonella enterica* variant, France. *Emerg Infect Dis*. 2012;18:132–4. <http://dx.doi.org/10.3201/eid1801.110450>
11. Allard MW, Luo Y, Strain E, Pettengill J, Timme R, Wang C, et al. On the evolutionary history, population genetics and diversity among isolates of *Salmonella* Enteritidis PFGE pattern JEGX01.0004. *PLoS ONE*. 2013;8:e55254. <http://dx.doi.org/10.1371/journal.pone.0055254>
12. Rehman MA, Ziebell K, Nash JH, Kropinski AM, Zong Z, Nafziger E, et al. High-quality draft whole-genome sequences of 162 *Salmonella enterica* subsp. *enterica* serovar Enteritidis strains isolated from diverse sources in Canada. *Genome Announc*. 2014;2.
13. Ley B, Le Hello S, Lunguya O, Lejon V, Muyembe JJ, Weill FX, et al. Invasive *Salmonella enterica* serotype Typhimurium infections, Democratic Republic of the Congo, 2007–2011. *Emerg Infect Dis*. 2014;20:701–4. <http://dx.doi.org/10.3201/eid2004.131488>
14. Zheng J, Pettengill J, Strain E, Allard MW, Ahmed R, Zhao S, et al. Genetic diversity and evolution of *Salmonella enterica* serovar Enteritidis strains with different phage types. *J Clin Microbiol*. 2014;52:1490–500. <http://dx.doi.org/10.1128/JCM.00051-14>

Address for correspondence: Simon Le Hello, Institut Pasteur, Unité des Bactéries Pathogènes Entériques, Centre National de Référence des *Escherichia coli*, *Shigella*, et *Salmonella*, 28 Rue du Docteur Roux, 75724 Paris CEDEX 15, France; email: slehello@pasteur.fr

## Table of Contents



Emailed to you

## GovDelivery

Manage your email alerts  
so you only receive  
content of interest  
to you.

Sign up for an  
Online Subscription:  
[wwwnc.cdc.gov/eid/subscribe.htm](http://wwwnc.cdc.gov/eid/subscribe.htm)