



HAL
open science

Genetic Diversity and Antimicrobial Resistance Profiles of *Salmonella enterica* Serotype Derby Isolated from Pigs, Pork, and Humans in France

Annaëlle Kerouanton, Valérie Rose, François-Xavier Weill, Sophie A. Granier, Martine Denis

► **To cite this version:**

Annaëlle Kerouanton, Valérie Rose, François-Xavier Weill, Sophie A. Granier, Martine Denis. Genetic Diversity and Antimicrobial Resistance Profiles of *Salmonella enterica* Serotype Derby Isolated from Pigs, Pork, and Humans in France. *Foodborne Pathogens and Disease*, 2013, 10 (11), pp.977-984. 10.1089/fpd.2013.1537 . pasteur-01109828

HAL Id: pasteur-01109828

<https://pasteur.hal.science/pasteur-01109828>

Submitted on 12 Mar 2019

HAL is a multi-disciplinary open access archive for the deposit and dissemination of scientific research documents, whether they are published or not. The documents may come from teaching and research institutions in France or abroad, or from public or private research centers.

L'archive ouverte pluridisciplinaire **HAL**, est destinée au dépôt et à la diffusion de documents scientifiques de niveau recherche, publiés ou non, émanant des établissements d'enseignement et de recherche français ou étrangers, des laboratoires publics ou privés.



Distributed under a Creative Commons Attribution 4.0 International License

1 **Genetic diversity and antimicrobial resistance profiles of *Salmonella enterica* serotype**
2 **Derby isolated from pigs, pork and humans in France**

3

4 Kerouanton, A.^{1,2*}, Rose V.^{1,2}, Weill, F-X.³, Granier, S.A.⁴, and Denis M.^{1,2}

5

6 ¹Anses, Ploufragan/Plouzané Laboratory, Hygiene and quality of poultry and pig products
7 unit, BP53, 22400 Ploufragan, France

8 ²European University of Brittany, France

9 ³Institut Pasteur, Unité des Bactéries Pathogènes Entériques, Centre National de Référence
10 des *Salmonella*, Paris, France

11 ⁴Anses, Food Safety Laboratory - Maisons-Alfort site, Bacterial Epidemiology and Research
12 Unit, Maisons-Alfort, France

13

14 *Corresponding author: Annaelle.KEROUANTON@anses.fr

15

16 Key words: *Salmonella* Derby, Pig, Pork, Human, characterization

17

18

19

1 **Abstract**

2 In France, *Salmonella enterica* serotypes Typhimurium and Derby are the most often isolated
3 serotypes in pigs. Moreover, serotype Derby usually ranks between 3rd and 4th in prevalence
4 among human isolates in France. The aim of this study was to evaluate the genetic
5 relationships between human and pig *S. Derby* isolates based on their Pulsed Field Gel
6 Electrophoresis (PFGE) patterns after *Xba*I, *Bln*I and *Spe*I restriction and on their
7 antimicrobial resistance profiles. The 196 studied isolates were isolated in 2006 and 2007: 73
8 from fattening pigs, 27 from pork and 96 from humans. Forty-four PFGE *Xba*I patterns were
9 identified. A major pattern (SDX01) was identified for 96 isolates (49%). This pattern was
10 common to pig, pork and human isolates. Among the 146 isolates tested for their
11 antimicrobial resistance, 84.2% (n=123) showed resistance to at least one antibiotic and
12 69.2% (n=101) were simultaneously resistant to at least streptomycin, sulfonamides and
13 tetracycline. Most of the isolates which resist to these 3 antibiotics also displayed the major
14 SDX01 pattern. The use of two other restriction enzymes on a part of the panel (155 isolates)
15 brought a significant increase in the discriminatory index, in particular for SDX01 strains. As
16 *S. Derby* is essentially isolated from pigs, and major resistance and PFGE patterns of isolates
17 from pigs and pork were very similar to human isolates, human salmonellosis due to *S.*
18 *enterica* serotype Derby may be related to pigs.

19

20

21

1 INTRODUCTION

2 *Salmonella enterica* subsp. *enterica* is the leading cause of bacterial food-borne disease in the
3 world. *Salmonella* typically causes acute gastroenteritis and may cause more serious
4 septicemic disease, most often in very young, elderly and immuno-compromised subjects. In
5 France, *Salmonella* is responsible for 65% of all recorded outbreaks of foodborne diseases
6 (Haeghebaert, 2002). Between 5700 and 12000 hospitalizations a year and, 92 and 535 deaths
7 a year, were attributed to *Salmonella* (Vaillant *et al.*, 2005). *Salmonella* can be isolated from
8 various food items: animal products such as eggs, meat, milk and dairy products, seafood,
9 fruits and vegetables. Pork has often been described as a source of human salmonellosis and
10 pigs have been identified in a number of countries as major carriers of *Salmonella* spp (Hald,
11 2003, Letellier, 1999). *Salmonella* has the ability to colonize the guts of healthy pigs who then
12 can serve as carriers. These asymptomatic pigs, when admitted to slaughterhouses, become a
13 potential risk for *Salmonella* contamination. *S. enterica* serotypes Typhimurium and Derby
14 (hereafter referred to as *S. Derby*) are both major *Salmonella* serotypes found in pigs in
15 France and Europe (Beloeil *et al.*, 2004, EFSA, 2008a, Fablet, 2003). We focused in this
16 study on *S. Derby* as this serotype is known to be especially linked to pigs (Giovannacci *et al.*,
17 2001, Valdezate *et al.*, 2005). Furthermore, over the last few years in France, it has been
18 ranked 3rd to 6th in prevalence among human serotyped isolates and is responsible each year
19 for one or two family and/or hospital-based outbreaks
20 ([http://www.pasteur.fr/ip/easysite/pasteur/fr/sante/centres-nationaux-de-reference-et-centres-](http://www.pasteur.fr/ip/easysite/pasteur/fr/sante/centres-nationaux-de-reference-et-centres-collaborateurs-de-l-oms/cnr-et-ccoms/cnr-des-salmonella/actualites-rapports#rapports)
21 [collaborateurs-de-l-oms/cnr-et-ccoms/cnr-des-salmonella/actualites-rapports#rapports](http://www.pasteur.fr/ip/easysite/pasteur/fr/sante/centres-nationaux-de-reference-et-centres-collaborateurs-de-l-oms/cnr-et-ccoms/cnr-des-salmonella/actualites-rapports#rapports)).
22 This serotype may also be implicated in larger outbreaks (Ebuchi *et al.*, 2006) and has been
23 among the twenty most frequently serotyped human *Salmonella* isolates in several European
24 and Asian countries over the past decade (Hendriksen *et al.*, 2011). Therefore, this serotype is
25 a major public health concern.

1 This study aimed at evaluating the link between pigs, pork and human isolates, in order to
2 assess the farm-to-fork continuum. To demonstrate the spread of isolates from pigs *via* pork to
3 humans, highly discriminatory typing methods are necessary. Traditional isolate typing
4 methods such as serotyping or phage typing have been used for surveillance of *Salmonella*
5 and outbreak investigations but they are supplemented nowadays with the development of
6 molecular methods (Gebreyes *et al.*, 2006, Wonderling *et al.*, 2003). Pulsed field gel
7 electrophoresis (PFGE), which is currently the gold standard, has generally good
8 discriminatory power and has been proven to be highly useful and reliable especially for
9 tracking contamination sources (Botteldoorn *et al.*, 2004, Vieira-Pinto *et al.*, 2006) and for
10 outbreak investigations (Dominguez *et al.*, 2009, Noel *et al.*, 2006). As the PFGE method
11 with *Xba*I has shown low discriminatory power for *S. Derby* (Kerouanton *et al.*, 2007), we
12 combined it with cluster analysis of multiple restriction enzymes (*Xba*I, *Bln*I and *Spe*I) as
13 recommended by Zheng *et al.* (Zheng *et al.*, 2011). Because resistance of *Salmonella* to
14 antimicrobial agents is a worldwide problem, and antimicrobial resistance has already been
15 described in human (Ling *et al.*, 2001) and non-human (Akiba *et al.*, 2006) *S. Derby* isolates,
16 antibiotic drug susceptibility was also determined. The study was conducted over a two-year
17 period on 196 isolates isolated in 2006 and 2007, 73 of which were from fattening pigs, 27
18 from pork and 96 from humans.

1 MATERIAL AND METHODS

2 *S. Derby* Isolates

3 A total of 196 *S. Derby* isolates from various origins were considered in this study. The
4 animal isolates (n=73) were collected from pig lymph nodes during the European baseline
5 studies carried out in 2006-2007 (EFSA, 2008) by the National Reference Laboratory (NRL)
6 for Salmonella (HQPAP unit ANSES Ploufragan). Isolates from pork (n=27), collected by the
7 French Salmonella network (Associated NRL for Salmonella, ANSES Maisons-Alfort) in
8 2006 and 2007 were also studied. Moreover, the French National Reference Center for
9 Salmonella (FNRC-Salm, Institut Pasteur, Paris) provided 96 *S. Derby* isolates collected from
10 human salmonellosis over the same period of time (47 isolates in 2006 and 49 in 2007). The
11 set of isolates represented 34.3%, and 41.2% of all the *S. Derby* isolates for 2006 and 2007,
12 respectively. In terms of representativity, it has been estimated that the FNRC-Salm network
13 detected 66% of confirmed human *Salmonella* infections in France at the time of the study
14 (Jourdan-Da Silva and Le Hello, 2012). In each lab, isolates were serotyped, according to the
15 White-Kauffmann-Le Minor scheme, on the basis of somatic O and phase 1 and phase 2
16 flagellar antigens by agglutination tests with antisera (Bio-Rad, Marnes la Coquette, France;
17 Eurobio, Les Ulis, France; World Health Organization Collaborative Center for Reference and
18 Research on *Salmonella*, Institut Pasteur, Paris, France).

19

20 *PFGE* typing

21 The genetic typing of the isolates was carried out by RFLP-PFGE with a CHEF-DR III
22 system (Bio-Rad) according to the PulseNet protocol (Ribot *et al.*, 2006). *S. enterica* serotype
23 Braenderup H9812 strain was used as a molecular size marker (Hunter *et al.*, 2005). After
24 staining with Ethidium Bromide, DNA patterns were visualized under UV light and images
25 were taken with the Biovision+ 1500/36M X PRESS system (Fisher Bioblock). *BlnI* and *SpeI*

1 enzymes were also used on a panel of 155 isolates. This panel is representative of isolates that
2 did not give a unique pattern after *XbaI* restriction. For *BlnI*-digested DNA, migration
3 conditions were the same as for *XbaI*: fragments were resolved on 1% agarose gel using
4 electrophoresis conditions of 6.0V/cm at 14°C for 20h. Pulse times were ramped from 2 s
5 (initial switch) to 64 s (final switch). For *SpeI*-digested DNA, migration was performed in two
6 steps, a 11.5h step with an initial switch time of 20 s and a final switch time of 40 s, followed
7 by a 9.5h step with an initial switch time of 7 s and a final switch time of 13 s, at a gradient of
8 6V/cm and an included angle of 120°. For cases of DNA lysis, we used an adapted DNA
9 extraction protocol with HEPES buffer instead of Tris buffer and TBE migration was
10 performed with 100 µM thiourea (Liesegang and Tschape, 2002, Silbert *et al.*, 2003)

11

12 ***Genetic profile analysis***

13 Fragment size estimations and analysis of the similarities between genotypes were carried out
14 using the BioNumerics® software (version 4.1, Applied Maths, Kortrijk, Belgium). The
15 similarities were calculated using Dice's coefficient with a maximum tolerance of 1% and
16 dendrograms were built according to the Unweighted Pair Group Method (UPGMA)
17 (Struelens, 1996).

18 The Simpson index (Hunter and Gaston, 1988) was calculated to estimate the diversity of the
19 sample and the 95% confidence intervals were also calculated based on the variance as
20 suggested by Grundmann (2001).

21

22 ***Antimicrobial susceptibility tests***

23 All pig and pork isolates were tested for their antimicrobial susceptibility. Resistance
24 phenotypes were determined using the disc diffusion method as recommended by the
25 Antibiogram Committee of the French Society for Microbiology (<http://www.sfm.asso.fr/>).

1 Sixteen antimicrobials (Bio-Rad) were tested: Ampicillin (10µg), amoxicillin + clavulanic
2 acid (20/10 µg), cephalothin (30µg), cefotaxime (30µg), ceftazidime (30µg), chloramphenicol
3 (30µg), tetracycline (30UI), streptomycin (10UI), kanamycin (30UI), gentamicin (15µg),
4 sulfonamides (200µg), cotrimoxazole (1.25/23.75 µg), nalidixic acid (30µg), ofloxacin (5µg),
5 enrofloxacin (5µg) and colistin (50µg). Automatic readings were performed using the OSIRIS
6 system (Bio-Rad). For human isolates, only those isolated in 2006 were studied (n=47) by the
7 FNRC-Salm for their resistance to the following 32 antimicrobial (Bio-Rad) as previously
8 described (Weill et al., 2004).

1 RESULTS

2 *PFGE types after XbaI restriction*

3 The 196 isolates generated 44 different PFGE *XbaI* patterns (figure 1). The discriminatory
4 ability (D-value) of the method for the entire panel was 0.75_{95%CI} [0.68-0.81].

5 Thirty-three PFGE patterns (75%) were encountered for a single isolate and then specifically
6 associated to a single origin: 4 PFGE patterns were attributed to a single pork isolate, 9 to pig
7 isolates and 20 to human isolates.

8 One other pattern was also related to a single origin but grouped together 3 pig isolates.

9 Conversely, ten patterns grouped together isolates of different origins. Six PFGE patterns
10 were common to pig, pork and human isolates (SDX01, 02, 12, 14, 30 and 32), 2 were
11 common to human and pig isolates (SDX05 and 17), 1 to human and pork isolates (SDX42)
12 and 1 to pig and pork (SDX39). Among these 10 patterns, SDX01 pattern was identified for
13 96 isolates among the 196 studied with 44.8% of those of human origin (43/96), 56.2% of
14 those of pig origin (41/73), 44.4% of those of pork origin (12/27). Actually, there was no
15 significant difference (χ^2 , p=0.30) allowing to assign this major pattern to one of the origins.

16 Fourteen PFGE patterns –SDX02, SDX03, SDX04, SDX05, SDX06, SDX07, SDX09,
17 SDX10, SDX11, SDX12, SDX18, SDX37, SDX43 and SDX46 patterns – were very similar
18 to the major SDX01 pattern (86% similarity), and comprised 39 isolates. Thus, a total of 135
19 isolates among the 196 studied (68.9%) were grouped into a single major cluster. This cluster
20 included 65.6% of the human isolates, 74% of the pig isolates and 66.7% of the pork isolates.

1 ***PFGE types after BlnI and SpeI restriction***

2 Isolates (n=155) of various origins grouped into 8 of the 10 PFGE *XbaI* patterns gathering
3 several isolates (isolates that did not give a unique pattern after *XbaI* restriction) were also
4 analyzed after *BlnI* and *SpeI* restriction. A total of 18 *BlnI* PFGE profiles and 27 *SpeI* PFGE
5 profiles have been highlighted. Eight isolates were non-typable with *BlnI* enzyme despite the
6 addition of thiourea. A combination of the results obtained with the 3 enzymes gave 42
7 combined PFGE patterns (figure 2). The discriminatory index for this panel of 155 isolates
8 was of 0.53, 0.60 and 0.68 when using respectively *BlnI*, *XbaI*, and *SpeI*, and increase to 0.72
9 when considering the results obtained with the three enzymes.

10 Most of the time, the use of the two others enzymes increased the discriminatory power of the
11 PFGE method. For SDX05, SDX30 and SDX32 patterns, the use of *BlnI* and *SpeI* separated
12 the human isolates from the others sources.

13 Sometimes, the use of *BlnI* and *SpeI* gave exactly the same discrimination than that obtained
14 with *XbaI*. For example, for the 4 isolates carrying SDX12, the combined pattern
15 SDX12/SDB01/SDS15 always correspond to 2 human, 1 pig and 1 pork isolates, as observed
16 after only *XbaI* restriction.

17 Similar *BlnI* and/or *SpeI* patterns were also observed for different *XbaI* patterns. For example,
18 the SDB01 pattern was highlighted for isolates carrying SDX01, SDX05 and SDX12 patterns;
19 and SDS10 for isolates carrying SDX30, SDX32 and SDX39 patterns. Moreover we also
20 noted that all animal isolates from these 3 *XbaI* patterns were non typable by *BlnI* enzyme.

21

22 ***Antimicrobial susceptibility***

23 No more than 15.5% (23/147) of the tested isolates were susceptible to all antimicrobials. For
24 the remaining isolates, 11 different patterns of resistance were observed, with from one to 6
25 resistances (Table 1). 79% of the isolates showed at least tetracycline (TE) resistance. TE

1 resistance was often associated with streptomycin (S) and sulfonamides (SSS) resistance.
2 Hence, 98 isolates (66.7%) displayed the S SSS TE pattern of resistance. Four isolates were
3 resistant to more than 3 antimicrobials. However, no resistance to fluoroquinolone or third
4 generation cephalosporins was detected. For each resistance pattern, Table 1 shows the
5 corresponding PFGE patterns. The 102 isolates harboring at least resistance to tetracycline,
6 streptomycin and sulfonamides were subdivided into 18 PFGE patterns while 75 isolates
7 (73.5%) belonged to the major PFGE pattern SDX01.

1 DISCUSSION

2 The genetic diversity of *S. Derby* isolates has rarely been investigated. In this study, a large
3 panel of 196 isolates was studied and molecular characterization by PFGE showed that the
4 genome of this serotype seems to have a highly homogeneous genetic composition. The
5 discriminatory ability (*D* value) of the method was 0.75 [0.68-0.81] for the entire panel,
6 confirming a previous study (Kerouanton *et al.*, 2007). A major *XbaI* pattern, SDX01, was
7 found for 49% (96/196) of the isolates. This PFGE pattern was also observed in a German
8 study by Hauser *et al.* (2011) but only for one isolate, while their main PFGE pattern,
9 corresponding to our SDX42 pattern, was only found for two of our isolates (one pork and
10 one human). This suggests that each country could have its own prevalent *S. Derby* pattern.
11 In our study, 9 patterns presented more than 90% similarity with the major PFGE pattern and
12 14 patterns more than 86% similarity.

13 Among the 96 tested isolates carrying the pattern SDX01, 4 *BlnI* and 9 *SpeI* PFGE profiles
14 were identified. However, among these 96 isolates, 81 isolates (32, 37 and 12 of human, pig
15 and pork origin, respectively) remain identical after the use of *BlnI* and *SpeI* enzymes. Isolates
16 with identical genetic profiles came from all tested sources. This result could suggest either
17 that these isolates are closely related and can be carried by different hosts or that PFGE is not
18 an appropriate method for *S. Derby*. Several other typing methods based on PCR
19 amplification and capillary electrophoresis or sequencing such as MLVA (Bergamini *et al.*,
20 2011, Boxrud *et al.*, 2007, Lindstedt *et al.*, 2003) and MLST (Achtman *et al.*, 2012, Ben-Darif
21 *et al.*, 2010, Torpdahl *et al.*, 2005), CRISPR (Fabre *et al.*, 2012) are now used for *Salmonella*
22 discrimination but they have rarely been described for *S. Derby* isolates. Genetic diversity of
23 *S. Derby* evidenced after use numerous methods was recently discussed (Hauser *et al.*, 2011)
24 but the conclusion was that PFGE remained the method with the highest index of diversity
25 followed by VNTR sequence typing (STTR5 primer only) and *sop* genes (*sopA*, *sopB* and

1 *sopD*) sequence typing (sop-ST). MLST or DNA microarray on 275 genes provided lower
2 discrimination of the 82 isolates studied. Consequently, according to the observations of
3 Hauser *et al.* (2011) with regard to PFGE, our results seem to indicate that our isolates, with
4 similar profiles after 3 different digestions, are genetically similar and have the ability to
5 colonize different hosts.

6 The antimicrobial susceptibility tests revealed a low percentage (15.5%) of wild type *S. Derby*
7 isolates (i.e., with no acquired mechanisms of resistance). This rate of wild type *S. Derby*
8 isolates is very different depending on studies: from 0% (Ellerboek *et al.*, 2010) to 82% (Piras
9 *et al.*, 2011). In our study, the majority of isolates (70.7%) were resistant to 3 antimicrobials,
10 including the S SSS TE pattern that accounted for 66.7% of the isolates. Resistance to these 3
11 antimicrobials was already highlighted for pigs isolates (Michael *et al.*, 2006b) and pork meat
12 (Anjum *et al.*, 2011, Mürmann *et al.*, 2009). Antimicrobial resistance has been commonly
13 associated with extended use in farm animals (Wegener *et al.*, 2003). While it is true that, in
14 France, tetracycline is the most commonly-used antimicrobial for pigs (Chevance and Moulin,
15 2011), consumption of antibiotics in pigs and resistance in *S. Derby* cannot be systematically
16 linked. Although penicillins are used as often as sulfonamides, no resistance to beta-lactam
17 antibiotics has been detected in any isolate from pigs or pork, whereas resistance to
18 sulfonamides was detected in most isolates.

19 A correlation between macrorestriction patterns and resistance patterns was previously
20 reported (Botteldoorn *et al.*, 2004, Michael *et al.*, 2006a, Michael *et al.*, 2006b). This
21 correlation was also clearly observed in our study as the major PFGE pattern SDX01 was
22 linked to the major antimicrobial resistance pattern: 75 (76.5%) of the 98 isolates resistant to
23 streptomycin, sulfonamides and tetracycline were from the SDX01 pattern. All SDX01
24 isolates tested (n=75) were resistant to these 3 antibiotics. A recent study (Cardoso *et al.*,
25 2011) showed that each *S. Derby* isolate presenting a major PFGE pattern also exhibited the S

1 SSS TE pattern and carried a class 1 integron. Indeed, class 1 integrons carry the *sull* gene
2 encoding sulphonamide resistance and frequently contain the *aadA* cassette gene, which is
3 associated with streptomycin/spectinomycin resistance (Michael *et al.*, 2006a). Presence of a
4 class 1 integron and *aadA* gene in *S. Derby* from pigs was also reported by Gebreyes *et al.*
5 (2004). Less frequently *S. Derby* isolates from Asia have been found to contain the
6 *Salmonella* genomic island 1 (SGI1) variant, which carries *aadA2*, *sull*, *floR* and *tet(A)*
7 resistance genes (Chiu *et al.*, 2007).

8 As reported by Huang *et al.* (2009), in pig *S. Derby* isolates showed a low resistance rate to
9 beta-lactams. Ampicillin resistance was found only in one human isolate. In our study, only
10 four isolates showed resistance to more than three antibiotics; two were isolated from humans,
11 one from pigs and one from pork. Pigs and pork isolates only showed resistance to
12 streptomycin, sulfonamides, trimethoprim and tetracycline. Nevertheless, these antimicrobials
13 are not the first used as a treatment for human salmonellosis.

14 A statistical attribution study based on outbreak data (Pires *et al.*, 2010) estimated that less
15 than 1% of outbreak-associated salmonellosis cases were attributed to pork in Europe in 2005
16 and 2006. However, in a report based on community observations, the European Food Safety
17 Authority (EFSA) estimated that 10-20% of human *Salmonella* infections in the EU may be
18 attributable to the pig reservoir (EFSA, 2010) and a more recent study (Pires *et al.*, 2011)
19 found the pig reservoir to be the second largest contributor to human salmonellosis in the EU,
20 responsible for 29.6% (95% CI: 28.9-30.3%) of reported cases. Pires *et al.* (2011) also
21 showed that pigs were the main source of human salmonellosis in eight countries.

22 In this epidemiological study, isolates of human and pig origin showed a very high similarity
23 in PFGE and in antimicrobial susceptibility. As serotype Derby is mostly associated with pigs
24 and is the most prevalent, along with serotype Typhimurium, in pig production in France, we
25 can conclude, as did Finley *et al.* (2008), that human salmonellosis due to this serotype is in

- 1 all likelihood linked to pigs. Implementation of another molecular method which is more
- 2 discriminatory than PFGE, as a complete MLVA scheme, and additional studies on isolates
- 3 from diverse origins could help us to confirm or infirm this hypothesis.

1
2
3
4
5
6
7
8
9
10
11
12
13
14
15
16
17
18
19
20
21
22
23
24
25
26
27
28
29
30
31
32
33
34
35
36
37
38
39
40
41
42
43
44
45
46
47

References

Achtman M, Wain J, Weill FX, Nair S, Zhou Z, Sangal V, Krauland MG, Hale JL, Harbottle H, Uesbeck A, Dougan G, Harrison LH, Brisse S. Multilocus sequence typing as a replacement for serotyping in *Salmonella enterica*. PLoS Pathog 2012;8:e1002776.

Akiba M, Nakamura K, Shinoda D, Yoshii N, Ito H, Uchida I, Nakazawa M. Detection and characterization of variant *Salmonella* genomic island 1s from *Salmonella* Derby isolates. Jpn J Infect Dis 2006;59:341-5.

Anjum MF, Choudhary S, Morrison V, Snow LC, Mafura M, Slickers P, Ehricht R, Woodward MJ. Identifying antimicrobial resistance genes of human clinical relevance within *Salmonella* isolated from food animals in Great Britain. J Antimicrob Chemother 2011;66:550-9.

Beloil PA, Fravalo P, Fablet C, Jolly JP, Eveno E, Hascoet Y, Chauvin C, Salvat G, Madec F. Risk factors for *Salmonella enterica subsp. enterica* shedding by market-age pigs in French farrow-to-finish herds. Prev Vet Med 2004;63:103-20.

Ben-Darif E, Jury F, De Pinna E, Threlfall EJ, Bolton FJ, Fox AJ, Upton M. Development of a multiplex primer extension assay for rapid detection of *Salmonella* isolates of diverse serotypes. J Clin Microbiol 2010;48:1055-60.

Bergamini F, Iori A, Massi P, Pongolini S. Multilocus variable-number of tandem-repeats analysis of *Salmonella enterica* serotype Gallinarum and comparison with pulsed-field gel electrophoresis genotyping. Veterinary Microbiology 2011;149:430-436.

Botteldoorn N, Herman L, Rijpens N, Heyndrickx M. Phenotypic and molecular typing of *Salmonella* strains reveals different contamination sources in two commercial pig slaughterhouses. Appl Environ Microbiol 2004;70:5305-14.

Boxrud D, Pederson-Gulrud K, Wotton J, Medus C, Lyszkowicz E, Besser J, Bartkus JM. Comparison of multiple-locus variable-number tandem repeat analysis, pulsed-field gel electrophoresis, and phage typing for subtype analysis of *Salmonella enterica* serotype Enteritidis. J Clin Microbiol 2007;45:536-43.

Cardoso M, Lopes GV, Silva LE. Antimicrobial resistance patterns of *Salmonella enterica subsp. enterica* serovar Derby and Typhimurium isolated from pigs slaughtered in southern Brazil. 9th International Conference on the Epidemiology and Control of biological, chemical and physical hazards in pigs and pork, 19-22 juin 2011, Maastricht.

Chevance A, Moulin G. Suivi des ventes de médicaments vétérinaires contenant des antibiotiques en France en 2010. Edition Scientifique - Anses ANMV, 2011.

Chiu CH, Chen HL, Kao LS, Yang CY, Chu C, Doublet B, Praud K, Cloeckaert A. Variant *Salmonella* genomic island 1 antibiotic resistance gene clusters in *Salmonella enterica* serovar Derby isolates from humans in Taiwan. J Antimicrob Chemother 2007;59:325-6.

Dominguez M, Jourdan-Da Silva N, Vaillant V, Pihier N, Kermin C, Weill FX, Delmas G, Kerouanton A, Brisabois A, de Valk H. Outbreak of *Salmonella enterica* serotype Montevideo infections in France linked to consumption of cheese made from raw milk. Foodborne Pathog Dis 2009;6:121-8.

Ebuchi S, Baba A, Uryu K, Hiwaki H. Two outbreaks caused by *Salmonella* Derby and *S. Anatum* at grilled-meat restaurants in Fukuoka city. Jpn J Infect Dis 2006;59:405-6.

EFSA. Report of the Task Force on Zoonoses data collection on the analysis of the baseline survey on the prevalence of *Salmonella* in slaughter pigs, in the EU, 2006-2007. Part A. The EFSA journal 2008;135:1-111.

1 EFSA. The Community Summary Report on Trends and Sources of Zoonoses, Zoonotic
2 Agents and food-borne outbreaks in the European Union in 2008. The EFSA Journal
3 2010;1496.

4 Ellerbroek L, Narapati D, Phu Tai N, Poosaran N, Pinthong R, Sirimalaisuwan A, Tshering P,
5 Fries R, Zessin KH, Baumann M, Schroeter A. Antibiotic resistance in *Salmonella* isolates
6 from imported chicken carcasses in bhutan and from pig carcasses in Vietnam. J Food Prot
7 2010;73:376-9.

8 Fablet C, Fravallo, P., Jolly J-P, Eveno, E., Madec, F., Beloeil, P-A. Recherche des facteurs de
9 risques de l'excrétion de *Salmonella enterica* par les porcs en croissance. Enquête
10 épidémiologique analytique en élevage naisseur-engraisseur. Epidémiologie et santé animale
11 2003;43:61-73.

12 Fabre L, Zhang J, Guigon G, Le Hello S, Guibert V, Accou-Demartin M, de Romans S, Lim
13 C, Roux C, Passet V, Diancourt L, Guibourdenche M, Issenhuth-Jeanjean S, Achtman M,
14 Brisse S, Sola C, Weill FX. CRISPR typing and subtyping for improved laboratory
15 surveillance of *Salmonella* infections. PLoS One 2012;7:e36995.

16 Finley R, Reid-Smith R, Ribble C, Popa M, Vandermeer M, Aramini J. The occurrence and
17 anti-microbial susceptibility of *Salmonellae* isolated from commercially available pig ear pet
18 treats. Zoonoses Public Health 2008;55:455-61.

19 Gebreyes WA, Altier C, Thakur S. Molecular epidemiology and diversity of *Salmonella*
20 serovar Typhimurium in pigs using phenotypic and genotypic approaches. Epidemiol Infect
21 2006;134:187-98.

22 Gebreyes WA, Thakur S, Davies PR, Funk JA, Altier C. Trends in antimicrobial resistance,
23 phage types and integrons among *Salmonella* serotypes from pigs, 1997-2000. J Antimicrob
24 Chemother 2004;53:997-1003.

25 Giovannacci I, Queguiner S, Ragimbeau C, Salvat G, Vendeuvre JL, Carlier V, Ermel G.
26 Tracing of *Salmonella spp.* in two pork slaughter and cutting plants using serotyping and
27 macrorestriction genotyping. J Appl Microbiol 2001;90:131-47.

28 Grundmann H, Hori S, Tanner G. Determining confidence intervals when measuring genetic
29 diversity and the discriminatory abilities of typing methods for microorganisms. J Clin
30 Microbiol 2001;39:4190-2.

31 Haeghebaert S, F. Le Querrec, P. Bouvet, A. Gallay, E. Espie, V. Vaillant. Les toxi-
32 infections alimentaires collectives en France en 2001. B E H 2002;50:249-253.

33 Hald TW, A.; Swanenburg, M.; von Altröck, A.; Thorberg, B. M. The occurrence and
34 epidemiology of *Salmonella* in European pig slaughterhouses. Epidemiol Infect
35 2003;131:1187-203.

36 Hauser E, Hebner F, Tietze E, Helmuth R, Junker E, Prager R, Schroeter A, Rabsch W, Fruth
37 A, Malorny B. Diversity of *Salmonella enterica* serovar Derby isolated from pig, pork and
38 humans in Germany. Int J Food Microbiol 2011;151:141-9.

39 Hendriksen RS, Vieira AR, Karlsmose S, Lo Fo Wong DM, Jensen AB, Wegener HC,
40 Aarestrup FM. Global monitoring of *salmonella* serovar distribution from the world health
41 organization global foodborne infections network country data bank: results of quality assured
42 laboratories from 2001 to 2007. Foodborne Pathog Dis 2011;8:887-900.

43 Huang TM, Lin TL, Wu CC. Serovar distribution and antimicrobial susceptibility of swine
44 *Salmonella* isolates from clinically ill pigs in diagnostic submissions from Indiana in the
45 United States. Lett Appl Microbiol 2009;48:331-6.

46 Hunter PR, Gaston MA. Numerical index of the discriminatory ability of typing systems: an
47 application of Simpson's index of diversity. J Clin Microbiol 1988;26:2465-6.

48 Hunter SB, Vauterin P, Lambert-Fair MA, Van Duyne MS, Kubota K, Graves L, Wrigley D,
49 Barrett T, Ribot E. Establishment of a universal size standard strain for use with the PulseNet

1 standardized pulsed-field gel electrophoresis protocols: converting the national databases to
2 the new size standard. J Clin Microbiol. 2005;43:1045-50.

3 Jourdan-Da Silva N, Le Hello S. Salmonelloses en France, 2002-2010: tendances en
4 épidémiologie humaine, émergence de la souche monophasique, principaux aliments
5 impliqués dans les dernières épidémies. BEH 2012;Hors-série:25-28.

6 Kerouanton A, Marault M, Lailier R, Weill FX, Feurer C, Espie E, Brisabois A. Pulsed-field
7 gel electrophoresis subtyping database for foodborne *Salmonella enterica* serotype
8 discrimination. Foodborne Pathog Dis 2007;4:293-303.

9 Letellier AM, S; Paré, J; Ménard, J; Quessy, S. Distribution of *Salmonella* in swine herds in
10 Québec. Veterinary Microbiology 1999;67:299-306.

11 Liesegang A, Tschape H. Modified pulsed-field gel electrophoresis method for DNA
12 degradation-sensitive *Salmonella enterica* and *Escherichia coli* strains. Int J Med Microbiol
13 2002;291:645-8.

14 Lindstedt BA, Heir E, Gjernes E, Kapperud G. DNA fingerprinting of *Salmonella enterica*
15 *subsp. enterica* serovar typhimurium with emphasis on phage type DT104 based on variable
16 number of tandem repeat loci. J Clin Microbiol 2003;41:1469-79.

17 Ling JM, Chan EWC, Cheng AF. Molecular Epidemiological Analysis of *Salmonella enterica*
18 Serotype Derby Infections in Hong Kong. Journal of Infection 2001;42:145-153.

19 Michael GB, Butaye P, Cloeckert A, Schwarz S. Genes and mutations conferring
20 antimicrobial resistance in *Salmonella*: an update. Microbes Infect 2006a;8:1898-914.

21 Michael GB, Cardoso M, Rabsch W, Schwarz S. Phenotypic and genotypic differentiation of
22 porcine *Salmonella enterica subsp. enterica* serovar Derby isolates. Vet Microbiol
23 2006b;118:312-8.

24 Mürmann L, dos Santos MC, Cardoso M. Prevalence, genetic characterization and
25 antimicrobial resistance of *Salmonella* isolated from fresh pork sausages in Porto Alegre,
26 Brazil. Food Control 2009;20:191-195.

27 Noel H, Dominguez M, Weill FX, Brisabois A, Duchazeaubeneix C, Kerouanton A, Delmas
28 G, Pihier N, Couturier E. Outbreak of *Salmonella enterica* serotype Manhattan infection
29 associated with meat products, France, 2005. Euro Surveill 2006;11:270-3.

30 Piras F, Brown DJ, Meloni D, Mureddu A, Mazzette R. Investigation of *Salmonella enterica*
31 in Sardinian slaughter pigs: prevalence, serotype and genotype characterization. Int J Food
32 Microbiol 2011;151:201-9.

33 Pires SM, De Knecht L, Hald T. Estimation of the relative contribution of different food and
34 animal sources to human *Salmonella* infections in the European Union. Scientific/Technical
35 report submitted to EFSA, 2011.

36 Pires SM, Vigre H, Makela P, Hald T. Using outbreak data for source attribution of human
37 salmonellosis and campylobacteriosis in Europe. Foodborne Pathog Dis 2010;7:1351-61.

38 Ribot EM, Fair MA, Gautom R, Cameron DN, Hunter SB, Swaminathan B, Barrett TJ.
39 Standardization of pulsed-field gel electrophoresis protocols for the subtyping of *Escherichia*
40 *coli* O157:H7, *Salmonella*, and *Shigella* for PulseNet. Foodborne Pathog Dis 2006;3:59-67.

41 Silbert S, Boyken L, Hollis RJ, Pfaller MA. Improving typeability of multiple bacterial
42 species using pulsed-field gel electrophoresis and thiourea. Diagn Microbiol Infect Dis
43 2003;47:619-21.

44 Struelens MJ. Consensus guidelines for appropriate use and evaluation of microbial
45 epidemiologic typing systems. Clin Microbiol Infect 1996;2:2-11.

46 Torpdahl M, Skov MN, Sandvang D, Baggesen DL. Genotypic characterization of *Salmonella*
47 by multilocus sequence typing, pulsed-field gel electrophoresis and amplified fragment length
48 polymorphism. J Microbiol Methods 2005;63:173-84.

1 Vaillant V, de Valk H, Baron E, Ancelle T, Colin P, Delmas MC, Dufour B, Pouillot R, Le
2 Strat Y, Weinbreck P, Jouglu E, Desenclos JC. Foodborne infections in France. *Foodborne*
3 *Pathog Dis* 2005;2:221-32.

4 Valdezate S, Vidal A, Herrera-Leon S, Pozo J, Rubio P, Usera MA, Carvajal A, Echeita MA.
5 *Salmonella* Derby clonal spread from pork. *Emerg Infect Dis* 2005;11:694-8.

6 Vieira-Pinto M, Tenreiro R, Martins C. Unveiling contamination sources and dissemination
7 routes of *Salmonella* sp. in pigs at a Portuguese slaughterhouse through macrorestriction
8 profiling by pulsed-field gel electrophoresis. *Int J Food Microbiol* 2006;110:77-84.

9 Wegener HC, Hald T, Lo Fo Wong D, Madsen M, Korsgaard H, Bager F, Gerner-Smidt P,
10 Molbak K. *Salmonella* control programs in Denmark. *Emerg Infect Dis* 2003;9:774-80.

11 Weill FX, Lailier R, Praud K, Kerouanton A, Fabre L, Brisabois A, Grimont PA, Cloeckaert
12 A. Emergence of extended-spectrum-beta-lactamase (CTX-M-9)-producing multiresistant
13 strains of *Salmonella enterica* serotype Virchow in poultry and humans in France. *J Clin*
14 *Microbiol* 2004;42:5767-73.

15 Wonderling L, Pearce R, Wallace FM, Call JE, Feder I, Tamplin M, Luchansky JB. Use of
16 pulsed-field gel electrophoresis to characterize the heterogeneity and clonality of *salmonella*
17 isolates obtained from the carcasses and feces of swine at slaughter. *Appl Environ Microbiol*
18 2003;69:4177-82.

19 Zheng J, Keys CE, Zhao S, Ahmed R, Meng J, Brown EW. Simultaneous analysis of multiple
20 enzymes increases accuracy of pulsed-field gel electrophoresis in assigning genetic
21 relationships among homogeneous *Salmonella* strains. *J Clin Microbiol* 2011;49:85-94.

22

23

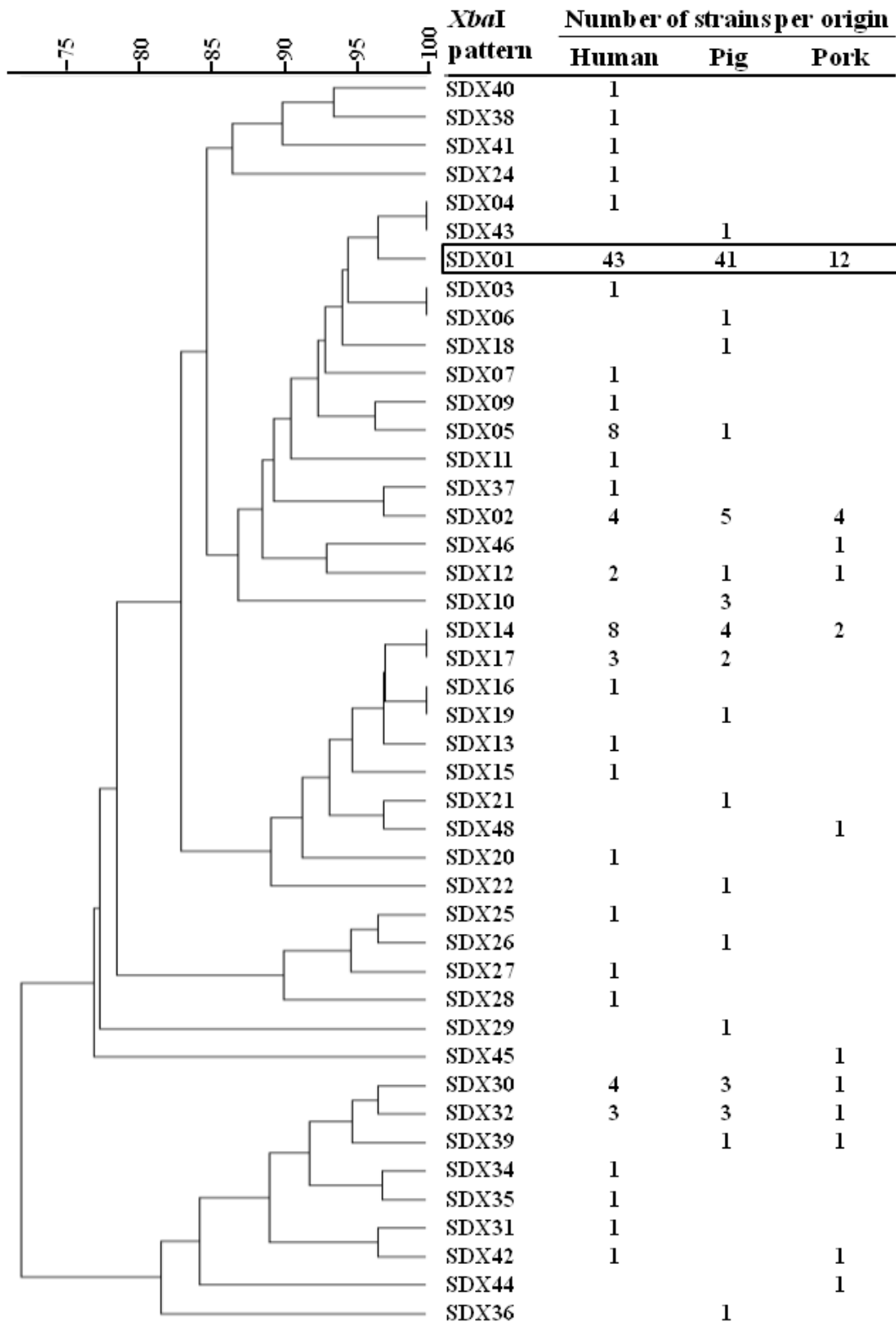
1 **Table 1:** Antimicrobial resistance distribution according to isolate origins

2

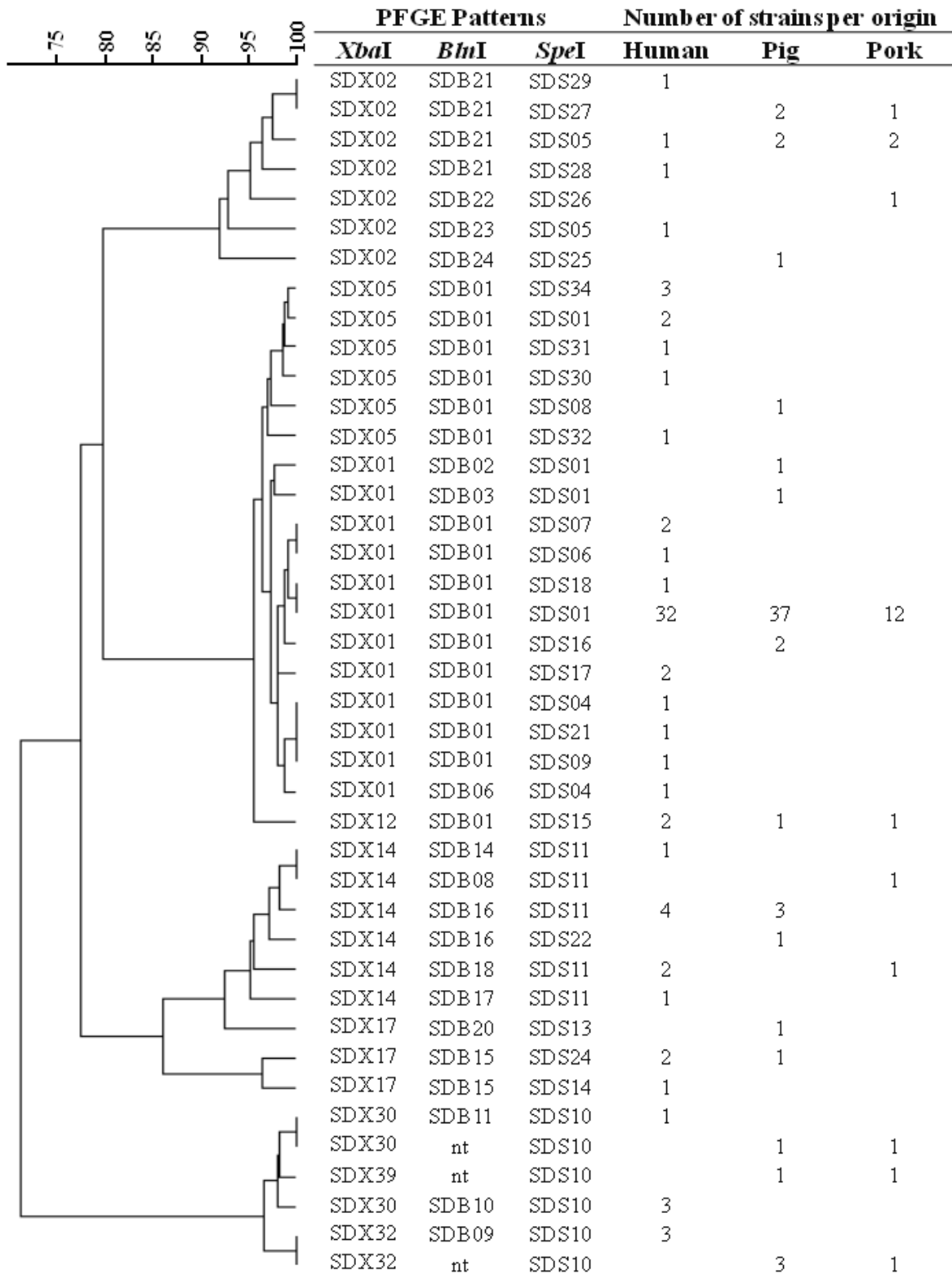
Antimicrobials*	Sample Origin			Associated <i>Xba</i> I patterns (No)
	Human No	Pig No	Pork No	
<i>Wild type strains (no acquired resistance)</i>	8	10	5	SDX02 (5), SDX14 (3), SDX30 (4), SDX31 (1), SDX32 (4), SDX36 (1), SDX37 (1), SDX39 (2), SDX41 (1), SDX42 (1)
TE	2		1	SDX013 (1), SDX25 (1), SDX48 (1)
S		4	1	SDX02 (1), SDX14 (1), SDX17 (1), SDX19 (1), SDX30 (1)
SSS, TE		2		SDX02 (2)
S, SSS		2		SDX22 (1), SDX43 (1)
S, TE		4		SDX14 (3), SDX26 (1)
SSS, TMP, TE	3		2	SDX09 (1), SDX17 (2), SDX42 (1), SDX45 (1)
S, SSS, TMP		1		SDX21 (1)
S, SSS, TE	32	49	17	SDX01 (75), SDX02 (1), SDX05 (7), SDX07 (1), SDX10 (3), SDXB11 (1), SDXB12 (2), SDXB14 (2), SDXB18 (1), SDXB29 (1), SDXB34 (1), SDXB40 (1), SDXB44 (1), SDXB46 (1)
S, SSS, TMP, TE		1	1	SDX02 (1), SDX06 (1)
A, S, SSS, TE	1			SDX35 (1)
S, K, TOB, GM, SSS, TE	1			SDX02 (1)

3 * TE: tetracycline, S: streptomycin, SSS: sulfonamides, TMP: trimethoprim, A: ampicillin, K: kanamycin, TOB: tobramycin, GM:
4 gentamicin. No: Number of isolates.

1 **Figure 1: Dendrogram representing the 44 PFGE-XbaI Patterns designated SDX01 to SDX48. The**
 2 **number of isolates of each source (Human, Pig and Pork) is shown on the right side. The major**
 3 **PFGE profile SDX01 is circled.**
 4 **NB: Some patterns appear to be 100% identical with BioNumerics® analysis (1% tolerance), but**
 5 **they have been visually identified as different from each other.**



1 **Figure 2: Dendrogram representing the 42 *XbaI*-*BlnI*-*SpeI* combined patterns obtained on 170**
 2 **strains (nt = non typable strains). The number of strains of each origin is shown on the right side.**
 3



4