



Estimates of the reproduction number for seasonal, pandemic, and zoonotic influenza: a systematic review of the literature

Matthew Biggerstaff, Simon Cauchemez, Carrie Reed, Manoj Gambhir, Lyn Finelli

► To cite this version:

Matthew Biggerstaff, Simon Cauchemez, Carrie Reed, Manoj Gambhir, Lyn Finelli. Estimates of the reproduction number for seasonal, pandemic, and zoonotic influenza: a systematic review of the literature. BMC Infectious Diseases, 2014, 14 (1), pp.480. 10.1186/1471-2334-14-480 . pasteur-01064890

HAL Id: pasteur-01064890

<https://pasteur.hal.science/pasteur-01064890>

Submitted on 17 Sep 2014

HAL is a multi-disciplinary open access archive for the deposit and dissemination of scientific research documents, whether they are published or not. The documents may come from teaching and research institutions in France or abroad, or from public or private research centers.

L'archive ouverte pluridisciplinaire **HAL**, est destinée au dépôt et à la diffusion de documents scientifiques de niveau recherche, publiés ou non, émanant des établissements d'enseignement et de recherche français ou étrangers, des laboratoires publics ou privés.

RESEARCH ARTICLE

Open Access

Estimates of the reproduction number for seasonal, pandemic, and zoonotic influenza: a systematic review of the literature

Matthew Biggerstaff^{1*}, Simon Cauchemez², Carrie Reed¹, Manoj Gambhir³ and Lyn Finelli¹

Abstract

Background: The potential impact of an influenza pandemic can be assessed by calculating a set of transmissibility parameters, the most important being the reproduction number (R), which is defined as the average number of secondary cases generated per typical infectious case.

Methods: We conducted a systematic review to summarize published estimates of R for pandemic or seasonal influenza and for novel influenza viruses (e.g. H5N1). We retained and summarized papers that estimated R for pandemic or seasonal influenza or for human infections with novel influenza viruses.

Results: The search yielded 567 papers. Ninety-one papers were retained, and an additional twenty papers were identified from the references of the retained papers. Twenty-four studies reported 51 R values for the 1918 pandemic. The median R value for 1918 was 1.80 (interquartile range [IQR]: 1.47–2.27). Six studies reported seven 1957 pandemic R values. The median R value for 1957 was 1.65 (IQR: 1.53–1.70). Four studies reported seven 1968 pandemic R values. The median R value for 1968 was 1.80 (IQR: 1.56–1.85). Fifty-seven studies reported 78 2009 pandemic R values. The median R value for 2009 was 1.46 (IQR: 1.30–1.70) and was similar across the two waves of illness: 1.46 for the first wave and 1.48 for the second wave. Twenty-four studies reported 47 seasonal epidemic R values. The median R value for seasonal influenza was 1.28 (IQR: 1.19–1.37). Four studies reported six novel influenza R values. Four out of six R values were <1 .

Conclusions: These R values represent the difference between epidemics that are controllable and cause moderate illness and those causing a significant number of illnesses and requiring intensive mitigation strategies to control. Continued monitoring of R during seasonal and novel influenza outbreaks is needed to document its variation before the next pandemic.

Keywords: Reproductive number, Influenza, Pandemics, Zoonotic influenza

Background

Annual influenza epidemics occur worldwide and cause substantial morbidity and mortality [1]. In the United States between 5% and 20% of the population are infected with influenza every year [2], resulting in between 3,000 and 49,000 influenza-associated deaths [3]. Influenza viruses are constantly changing either through the collection of minor point mutations or through major antigenic shifts. These major shifts can result in the

introduction of novel influenza viruses into the human population to which humans have little or no immunity, causing pandemics [1]. Four influenza pandemics have occurred since the beginning of the 20th century and have ranged widely in transmissibility and clinical severity [1,4].

Recognizing that the characteristics of future pandemics will be difficult to predict given the mutability of the influenza virus and the range of morbidity and mortality experienced in previous pandemics, an approach to the early assessment of influenza pandemics has been developed relying on standardized measures of transmissibility and clinical severity [5]. An important transmissibility

* Correspondence: mbiggerstaff@cdc.gov

¹Epidemiology and Prevention Branch, Influenza Division, National Center for Immunization and Respiratory Diseases, Centers for Disease Control and Prevention, 1600 Clifton Road NE MS A-32, Atlanta 30333, Georgia
Full list of author information is available at the end of the article

parameter identified is the reproduction number (R), which is defined as the average number of secondary cases generated per typical infectious case [6,7]. R describes on average how many persons a case will infect, and a value of R greater than 1 indicates that the infection may grow or persist in the population while a value of R less than 1 indicates that the infection will decline in the population, although exceptions exist [7,8]. Many methods to calculate R have been described that allow for the use of epidemiologic data from different epidemic time points [7]. Some examples include estimating R using the growth rate of the epidemic, the epidemic curve's size and shape, the final attack rate, or by direct observation of disease transmission from one generation to the next [7]. The population susceptibility to the infection also affects the interpretation of R . If R is calculated in a population entirely susceptible to infection (or where an assumption about population susceptibility to infection is made), then R is known as the basic reproduction number (R_0). In contrast, the effective reproduction number (R_E) is calculated in a population with underlying immunity and accounts for a population's reduced susceptibility to infection [9].

The value of R characterizes the final number infected in the absence of an intervention in homogeneously mixed populations, the herd immunity threshold, and, when coupled with the generation time, defined as the interval between infections in two consecutive generations, or the serial interval, defined as the interval between the onset of symptoms in two consecutive generations), the speed with which the disease spreads in the population [10-12]. Therefore, the magnitude of R plays an important role in the selection and aggressiveness of countermeasures (e.g. social distancing, treating ill individuals, or vaccination) required to slow transmission of the disease [10,13].

Because R is used as a measure of transmissibility and informs the selection of different mitigation strategies, it is important to understand the range and uncertainty of published R values. In this paper, we investigate whether published estimates of R differ between pandemic, seasonal, and novel influenza, we compare values of R calculated in differing geographic regions and settings, and we explore the assumptions and limitations of the estimation methods of R .

Methods

We performed a literature search using the PubMed database from 1950 to January 16, 2013. The following key terms were searched: "reproduction number and influenza", "reproductive number and influenza", " R_0 and influenza", "reproduction rate and influenza", and "reproductive rate and influenza". We limited our search to articles in English. We retained articles that estimated R for pandemic or seasonal influenza or for human

infections with non-human influenza viruses (e.g. H5N1). For all studies retained, we abstracted the date of publication, the year, the geographic location where the data were collected, the influenza subtype, the study population, whether it was a confined setting, the wave of the observation (if during a pandemic), the estimated value of R , the method to identify influenza cases, and whether it was a R_0 or R_E . If multiple R values were provided, we provide the median and range. Since methods to estimate the reproduction number often require a value for the generation time or the serial interval, we also report those values [14]. We classified the method used to determine influenza-associated cases into two categories: laboratory confirmed, which required the use of confirmatory testing of respiratory or blood specimens, or unconfirmed, which relied on syndromic case definitions to identify cases and required no laboratory confirmation of illnesses.

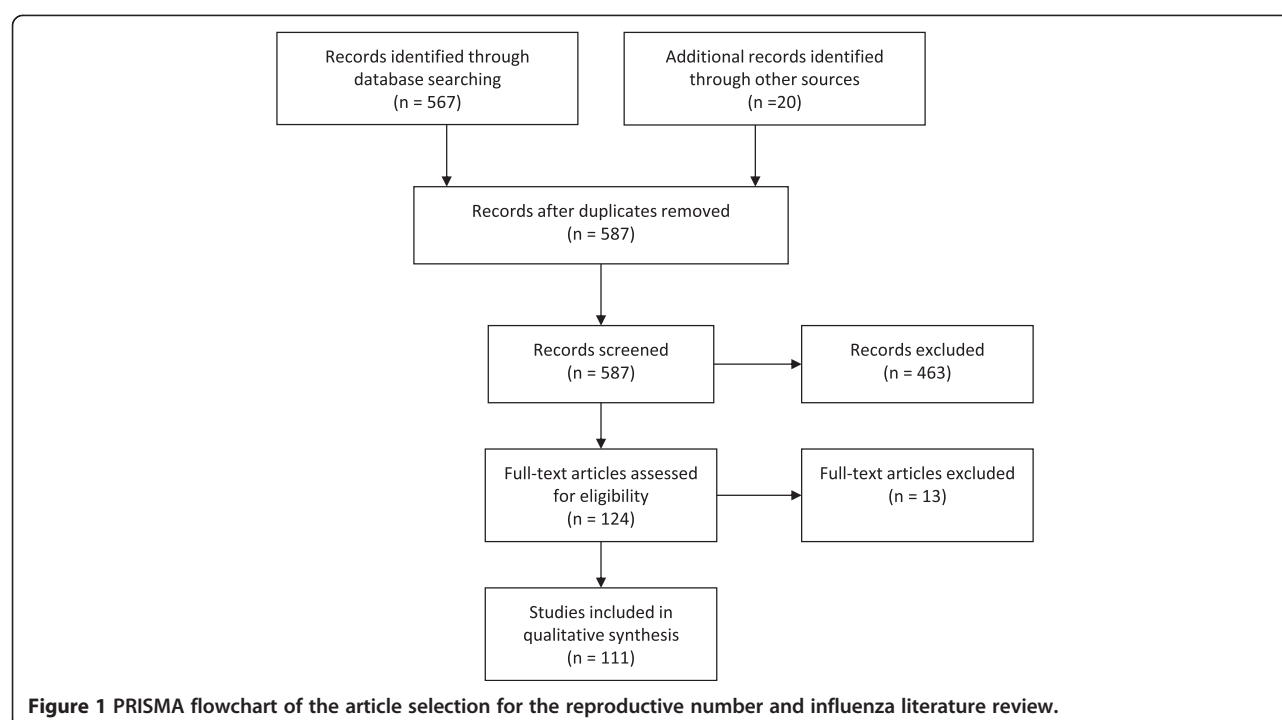
Median R values and interquartile ranges (IQR) were reported for each pandemic and for the group of inter-pandemic seasonal epidemics. If a range of values was given for an individual study instead of a point estimate, the middle value of the range was used in the pandemic or epidemic median calculations.

Results

The search strategy initially identified 567 papers (Figure 1). Ninety-one papers were retained that estimated R for pandemic or seasonal influenza or for human infections with non-human influenza viruses (e.g. H5N1). Twenty additional papers were contributed by the references of the papers identified through the original search. In all, 111 articles were retained that presented original estimates of the reproduction number (summarized in Tables 1, 2, 3, 4, 5 and 6). Data provided in the tables are also available as .csv files in Additional files 1, 2, 3, 4, 5 and 6.

1918 influenza pandemic

The origins of the 1918 influenza A/H1N1 pandemic are unknown, and illnesses are thought to have occurred in three waves [1,37]. The first wave began in the Northern Hemisphere in the spring 1918 [1]. A second wave of more intense transmission occurred concurrently in North America, Europe, and Africa in fall 1918, and a third and final wave occurred in some areas of the world during winter 1919 [37,125]. The 1918 pandemic was the most deadly pandemic ever recorded, and an estimated 675,000 deaths occurred in the United States during the pandemic period. In contrast to seasonal influenza, which disproportionately affects the very young and old, those aged 20–40 years were especially affected [37].



Twenty-four studies reported 51 separate 1918 pandemic values of R (Table 1; Figure 2). The median point estimate of R in the community setting for all waves of illness was 1.80 (IQR: 1.47–2.27) (Table 1). A higher median R value ($R = 3.82$; IQR: 2.68–4.84) was reported in confined settings, such as ships, military camps, and schools. The median values of R were similar between the first and subsequent waves of illness: the median value of R was 1.81 (IQR: 1.50–2.28) for the 1st wave, 1.73 (IQR: 1.39–2.33) for the second wave, and 1.70 (IQR: 1.55–1.76) for the third wave (Table 1).

The majority of 1918 pandemic values for R were calculated for populations in Europe, which accounted for 58% of the R estimates included in this analysis. The mean generation time or serial interval used in the calculations to estimate R had a median value of 3.3 days, and the mean ranged from 1.5–6 days. Because the influenza virus was not discovered until 1931[1], all studies included in this review relied on reports of unconfirmed illness to identify those ill. A majority (65%) used pneumonia-and-influenza-related hospitalizations and deaths as the case ascertainment source (Table 1).

1957 influenza pandemic

The 1957 influenza A/H2N2 pandemic began in February 1957 in southern China and spread to Singapore and Hong Kong in April [1]. The virus was first isolated in the United States in June 1957 and was associated with a

first wave [1,41]. The peak of the pandemic occurred during the second wave in the Northern Hemisphere in October 1957 and was followed by a third wave in January 1958. An estimated 115,000 deaths occurred in the United States during the pandemic period [37].

Six studies reported seven separate 1957 pandemic values of R (Table 2; Figure 3). The median point estimate of R in the community setting for the second wave of illnesses was 1.65 (IQR: 1.53–1.70). No R values were reported for confined settings or for the 1st or 3rd waves of illness.

A majority (86%) of 1957 pandemic R values were calculated for populations in Europe. The mean generation time or serial interval used in the calculations to determine R had a median value of 3.5 days, and the mean ranged from 2.6–4.1 days. All studies but one included in this review relied on unconfirmed illnesses to identify those ill. The other study relied on the final attack rate as determined by serological methods (Table 2).

1968 influenza pandemic

The 1968 influenza A/H3N2 pandemic began in Hong Kong in July 1968. Large single waves were reported in the Northern Hemisphere between September 1968 and April 1969 (with peaks occurring in December and January) and in the Southern Hemisphere between June and September 1969. Some countries in the Northern Hemisphere, such as the United Kingdom, did not have an

Table 1 Reproduction numbers from the 1918 Influenza A/H1N1 Pandemic

Location	Wave ^a	Study population	Mean GT/SI ^b	Reproduction Number (R)	95% CI ^c	Basic or effective	Case definition	Reference	Year published
Australia	1st	Community	2.6	1.80	1.6–2.0	Basic	Unconfirmed hospitalizations/deaths	[15]	2008
Brazil	1st	Community	4	2.68		Basic	Unconfirmed illness	[16]	2007
Canada	1st	Community	3	1.50	1.5–1.5	Basic	Unconfirmed deaths	[17]	2011
Canada	1st	Community	6	2.1	2.1–2.1	Basic	Unconfirmed deaths	[17]	2011
Colombia	1st	Community	3	1.4–1.5		Effective	Unconfirmed deaths	[18]	2012
Colombia	1st	Community	4	1.5–1.7		Effective	Unconfirmed deaths	[18]	2012
Denmark	1st	Community	2.6	2.2–2.4		Effective	Unconfirmed illness	[19]	2008
Denmark	1st	Community	4	2.8–3.0		Effective	Unconfirmed illness	[19]	2008
Denmark	1st	Community	2.6	2.8–4.0		Effective	Unconfirmed hospitalizations	[19]	2008
Denmark	1st	Community	4	3.6–5.4		Effective	Unconfirmed hospitalizations	[19]	2008
Italy	1st	Community	3	1.03	1.00–1.08	Basic	Unconfirmed hospitalizations	[20]	2011
Mexico	1st	Community	3	1.30		Effective	Unconfirmed deaths	[21]	2010
Peru	1st	Community	3	1.38	1.37–1.40	Effective	Unconfirmed deaths	[22]	2011
Switzerland	1st	Community	3.11	1.49	1.45–1.53	Basic	Unconfirmed hospitalizations	[23]	2006
Switzerland	1st	Community	3.4	1.50		Basic	Unconfirmed deaths	[24]	2009
United Kingdom	1st	Community	2.6	1.7		Basic	Unconfirmed deaths	[10]	2006
United Kingdom	1st	Community	4.1	2.10		Effective	Unconfirmed illness	[25]	2006
United Kingdom	1st	Community	6	2.00		Basic	Unconfirmed illness	[26]	2005
United Kingdom	1st	Community	NR	1.16–2.94		Effective	Unconfirmed illness	[27]	2010
United Kingdom	1st	Students	NR	1.43–5.36		Effective	Unconfirmed illness	[27]	2010
USA	1st	Community	4	1.34–3.21		Effective	Unconfirmed illness	[28]	2008
Various	1st	Community	4	1.2–3.0		Effective	Unconfirmed illness	[29]	2007
Various	1st	Community	4	2.1–7.5		Effective	Unconfirmed illness	[29]	2007
	1st	Sailors	4	4.97		Effective	Unconfirmed illness	[28]	2008
Canada	2nd	Community	3.6	2.26	1.95–2.63	Basic	Unconfirmed illness	[30]	2010
Canada	2nd	Community	3.6	1.49	1.42–1.55	Basic	Unconfirmed illness	[30]	2010
Canada	2nd	Community	3	2.40	2.4–2.5	Basic	Unconfirmed deaths	[17]	2011
Canada	2nd	Community	6	4.3	4.2–4.4	Basic	Unconfirmed deaths	[17]	2011
Denmark	2nd	Community	2.6	1.22–1.24		Effective	Unconfirmed illness	[19]	2008
Denmark	2nd	Community	4	1.29–1.33		Effective	Unconfirmed illness	[19]	2008
Denmark	2nd	Community	2.6	1.2–1.3		Effective	Unconfirmed hospitalizations	[19]	2008
Denmark	2nd	Community	4	1.3–1.4		Effective	Unconfirmed hospitalizations	[19]	2008
Germany	2nd	Community	1	1.58	0.03–10.3	Basic	Unconfirmed deaths	[31]	2007
Germany	2nd	Community	3	2.52	0.75–5.85	Basic	Unconfirmed deaths	[31]	2007
Germany	2nd	Community	5	3.41	1.91–5.57	Basic	Unconfirmed deaths	[31]	2007

Table 1 Reproduction numbers from the 1918 Influenza A/H1N1 Pandemic (Continued)

Italy	2nd	Community	3	1.38	1.3–1.5	Basic	Unconfirmed hospitalizations	[20]	2011
Mexico	2nd	Community	3	1.30		Effective	Unconfirmed deaths	[21]	2010
New Zealand	2nd	Military	>1.5	1.3–3.1		Basic	Unconfirmed hospitalizations	[32]	2006
Switzerland	2nd	Community	2.28	3.75	3.6–3.9	Effective	Unconfirmed hospitalizations	[23]	2006
Switzerland	2nd	Community	3.4	2.40		Basic	Unconfirmed deaths	[24]	2009
United Kingdom	2nd	Community	3	1.39	1.36–1.43	Effective	Unconfirmed deaths	[33]	2008
United Kingdom	2nd	Community	6	1.84	1.75–1.92	Effective	Unconfirmed deaths	[33]	2008
United Kingdom	2nd	Community	6	1.55		Basic	Unconfirmed illness	[26]	2005
United Kingdom	2nd	Community	2.6	1.50		Basic	Unconfirmed deaths	[10]	2006
USA	2nd	Community	2.5	2.14		Basic	Unconfirmed deaths	[34]	2009
USA	2nd	Community	NR	2.20	1.55–2.84	Effective	Unconfirmed illness	[35]	2007
USA	2nd	Community	4	2.00	1.7–2.3	Effective	Unconfirmed deaths	[36]	2004
USA	2nd	Community	2.85	1.73		Effective	Unconfirmed deaths	[14]	2007
United Kingdom	3rd	Community	3	1.39	1.29–1.49	Effective	Unconfirmed deaths	[33]	2008
United Kingdom	3rd	Community	6	1.82	1.61–2.05	Effective	Unconfirmed deaths	[33]	2008
United Kingdom	3rd	Community	6	1.70		Basic	Unconfirmed illness	[26]	2005

Median reproduction number for the 1918 pandemic: 1.80; Interquartile range 1.47–2.27

^aThe first wave of illnesses began in the Northern Hemisphere in the spring 1918 [1]. A second wave of more intense transmission occurred concurrently in North America, Europe, and Africa in the Fall of 1918 while a third and final wave of activity occurred in some areas of the world during the winter of 1919 [37].

^bThe generation time (GT) or serial interval (SI) assumed in the reproduction number estimation.

^cConfidence interval.

NR = Not reported.

This table is also available as a .csv file as Additional file 1.

outbreak of H3N2 until the winter of 1969–70. In all, an estimated 110,000 deaths occurred in the United States during the pandemic period [37].

Four studies reported seven separate 1968 pandemic values of *R* (Table 3; Figure 3). The median point estimate of *R* in the community setting for all waves of illness was 1.80 (IQR: 1.56–1.85) (Table 3). Only two values for *R* in confined settings were reported, and the median value was 1.39. Two values of *R* were reported in a community setting during the first wave and three during the second wave. The median value of *R* during the 1st wave was 1.56 and 1.68 during the 2nd wave (Table 3).

The 1968 pandemic values for *R* were calculated among populations in diverse geographic locations, mainly because of one study that calculated separate values for over 25 locations, such as Africa, Asia, and South America (the overall estimate for *R* is included in

Table 3) [43]. The mean generation time or serial interval used in the calculations to determine *R* had a median value of 4 days with little variation. The studies for the 1968 pandemic included in this review relied on a mix of laboratory-confirmed, unconfirmed illnesses, or serologically-confirmed infections to identify those ill (Table 3).

The 2009 influenza pandemic

The 2009 influenza A/H1N1 pandemic began in Mexico in the late winter or early spring 2009 [44]. The United States and the United Kingdom experienced a first wave of illnesses in the spring followed by a second wave during the fall [4]. However, a number of other countries, especially in the Southern Hemisphere, only experienced a single wave of illnesses [100]. In all, an estimated 12,000 deaths occurred in the United States during the first year of pandemic circulation [126].

Table 2 Reproduction numbers from the 1957 influenza A/H2N2 pandemic

Location	Wave ^a	Study population	Mean GT/SI ^b	Reproduction number (R)	95% CI ^c	Basic or effective	Case definition	Reference	Year published
Netherlands	2nd	Community	3	1.39		Basic	Unconfirmed deaths	[38]	2010
United Kingdom	2nd	Community	2.6	1.70		Basic	Unconfirmed deaths	[10]	2006
United Kingdom	2nd	Community	3	1.5–1.6		Basic	Unconfirmed illness	[39]	2008
United Kingdom	2nd	Community	4	1.7–1.8		Basic	Unconfirmed illness	[39]	2008
United Kingdom	2nd	Community	4.1	1.50		Effective	Unconfirmed illness	[25]	2006
United Kingdom	2nd	Community	NR	1.65		Basic	Serology confirmed infection	[26]	2005
USA	2nd	Community	4	1.70		Basic	Unconfirmed illness	[40]	2004

Median reproduction number for the 1957 pandemic: 1.65; Interquartile range 1.53–1.70

^aThe 1957 influenza A/H2N2 pandemic began in February 1957 in southern China and spread to Singapore and Hong Kong in April [1]. The virus was first isolated in the United States in June 1957 and was associated with a mild first wave of illnesses [1,41]. The peak of the pandemic occurred during the second wave in the Northern Hemisphere in October 1957 and was followed by a third wave in January 1958.

^bThe generation time (GT) or serial interval (SI) assumed in the reproduction number estimation.

^cConfidence interval.

NR = Not reported.

This table is also available as a .csv file as Additional file 2.

Fifty-seven studies reported 78 separate 2009 pandemic values of R (Table 4; Figure 4). The median point estimate of R in the community setting for all waves of illness was 1.46 (IQR: 1.30–1.70) while a higher median R value (R = 1.96; IQR: 1.50–2.23) was reported in confined settings, such as military or summer camps,

schools, and night clubs. The value of R was similar across the two distinct waves of illness: the median value of R was 1.47 (IQR: 1.31–1.71) for the first wave and 1.48 (IQR: 1.30–1.66) for the second wave (Table 4).

A majority of 2009 pandemic values for R were calculated for populations in North America (30%) and Asia

Table 3 Reproduction numbers from the 1968 influenza A/H3N2 pandemic

Location	Wave ^a	Study population	Mean GT/SI ^b	Reproduction number (R)	95% CI ^c	Basic or effective	Case definition	Reference	Year published
Hong Kong	1st	Community	2.95	1.89		Basic	Unconfirmed illness	[42]	1986
various	1st	Community	4	1.06–2.06		Basic	Serology; laboratory confirmed illness; unconfirmed illness	[43]	2010
various	1st	Confined settings	4	1.08–1.62		Basic	Serology; laboratory confirmed illness; unconfirmed illness	[43]	2010
United Kingdom	1st	Community	4.1	1.80		Effective	Unconfirmed illness	[25]	2006
United Kingdom	2nd	Community	NR	1.85		Effective	Serology confirmed infection	[26]	2005
various	2nd	Community	4	1.08–2.02		Effective	Serology; laboratory confirmed illness; unconfirmed illness	[43]	2010
various	2nd	Confined settings	4	1.43	1.23–1.63	Effective	Serology; laboratory confirmed illness; unconfirmed illness	[43]	2010

Median reproduction number for the 1968 pandemic: 1.80; Interquartile range 1.56–1.85.

^aThe 1968 influenza A/H3N2 pandemic began in Hong Kong in July 1968. Large single waves of illness were reported in the Northern Hemisphere between September 1968 and April 1969 (with peaks occurring in December 1968–January 1969). Large single waves of illnesses were reported in the Southern Hemisphere between June and September 1969. Some countries in the Northern Hemisphere, such as the United Kingdom, did not have an outbreak of H3N2 until the winter of 1969–70.

^bThe generation time (GT) or serial interval (SI) assumed in the reproduction number estimation.

^cConfidence interval.

NR = Not reported.

This table is also available as a .csv file as Additional file 3.

Table 4 Reproduction numbers from the 2009 influenza A/H1N1 pandemic

Location	Wave ^a	Study population	Mean GT/SI ^b	Reproduction number (R)	95% CI ^c	Basic or effective	Case definition	Reference	Year published
Mexico	0	Community	1.91	1.25	0.76–1.74	Basic	Laboratory confirmed illness	[44]	2011
Australia	1st	Community	2.8	1.50	1.50–2.70	Effective	Laboratory confirmed illness	[45]	2010
Australia	1st	Community	2.8	1.20	1.0–1.4	Effective	Laboratory confirmed illness	[45]	2010
Australia	1st	Community	2.9	2.40	2.3–2.4	Effective	Laboratory confirmed illness	[46]	2009
Australia, rural	1st	Community	2.9	1.28	1.26–1.30	Effective	Laboratory confirmed illness	[47]	2011
Australia, urban	1st	Community	2.9	1.26	1.22–1.30	Effective	Laboratory confirmed illness	[47]	2011
Canada	1st	Community	1.91	1.30	1.12–1.47	Basic	Laboratory confirmed illness	[48]	2010
Canada	1st	Community	2.78	2.21	1.98–2.50	Basic	Laboratory confirmed illness	[49]	2012
Canada	1st	Community	3.6	1.63	1.31–1.96	Basic	Laboratory confirmed illness	[48]	2010
Canada	1st	Community	4.31	1.31	1.25–1.38	Basic	Laboratory confirmed illness	[50]	2010
Chile	1st	Community	2.5	1.80	1.6–2.0	Effective	Unconfirmed emergency room visits	[51]	2010
Chile, central	1st	Community	3	1.32	1.27–1.37	Effective	Unconfirmed hospitalizations	[52]	2012
Chile, northern	1st	Community	3	1.19	1.13–1.24	Effective	Unconfirmed hospitalizations	[52]	2012
Chile, southern	1st	Community	3	1.58	1.45–1.72	Effective	Unconfirmed hospitalizations	[52]	2012
China	1st	Community	2.6	1.25	1.22–1.28	Effective	Laboratory confirmed illness	[53]	2012
China	1st	Community	4.31	1.53	1.45–1.60	Basic	Laboratory confirmed illness	[54]	2012
China	1st	Community	NR	1.68		Basic	Laboratory confirmed illness	[55]	2011
Hong Kong	1st	Community	3	1.70	1.6–1.8	Effective	Laboratory confirmed illness	[56]	2010
Hong Kong	1st	Community	3.2	1.45	1.4–1.5	Effective	Laboratory confirmed illness	[57]	2010
Israel	1st	Community	2.92	1.06	0.97–1.16	Effective	Laboratory confirmed illness	[58]	2011
Italy	1st	Community	2.6	1.30	1.23–1.32	Effective	Unconfirmed illness	[59]	2012
Japan	1st	School	1.9	2.30	2.0–2.6	Effective	Laboratory confirmed illness	[60]	2009
Japan	1st	Community	2.7	1.28	1.23–1.33	Effective	Laboratory confirmed illness	[60]	2009
Mexico	1st	Community	1.91	1.58	1.34–2.04	Basic	Unconfirmed illness	[61]	2009
Mexico	1st	Community	1.96	1.42		Basic	Unconfirmed illness	[62]	2010
Mexico	1st	Community	2.6	1.40	1.2–1.9	Basic	Laboratory confirmed illness	[61]	2009
Mexico	1st	Community	2.6	1.22	1.05–1.60	Basic	Laboratory confirmed illness	[61]	2009
Mexico	1st	Community	3	1.80	1.78–1.81	Effective	Unconfirmed illness	[63]	2011
Mexico	1st	Community	3	1.43	1.29–1.57	Effective	Laboratory confirmed illness	[64]	2009
Mexico	1st	Community	3.1	2.20	2.1–2.4	Effective	Laboratory confirmed illness	[65]	2009
Mexico	1st	Community	3.5	2.30	2.1–2.5	Basic	Laboratory confirmed illness	[11]	2009
Mexico	1st	Community	3.6	1.75	1.6–1.9	Basic	Seeding from Mexico	[66]	2009
Mexico	1st	Community	4.1	3.10	2.9–3.5	Effective	Laboratory confirmed illness	[65]	2009
Mexico City	1st	Community	3	1.72		Basic	Laboratory confirmed illness	[67]	2009
Morocco	1st	Community	2.3	1.44	1.32–1.56	Basic	Laboratory confirmed illness	[68]	2012
Morocco	1st	Community	2.7	1.40	1.34–1.48	Basic	Laboratory confirmed illness	[68]	2012
Netherlands	1st	Community	3	0.50		Effective	Laboratory confirmed illness	[69]	2009
New Zealand	1st	Community	2.7	1.25	1.07–1.47	Effective	Laboratory confirmed illness	[70]	2011
New Zealand	1st	Community	2.8	1.96	1.80–2.15	Effective	Laboratory confirmed illness	[71]	2009
New Zealand	1st	Community	2.8	1.55	1.16–1.86	Effective	Laboratory confirmed illness; unconfirmed illness	[72]	2010
North America	1st	Community	2.7	1.3–2.1		Basic	Laboratory confirmed illness	[73]	2010
Peru	1st	Community	2.8	1.37	1.33–1.41	Effective	Laboratory confirmed illness	[74]	2009
Peru	1st	Community	3	1.30	1.3–1.3	Effective	Unconfirmed illness	[75]	2011

Table 4 Reproduction numbers from the 2009 influenza A/H1N1 pandemic (Continued)

Peru, Lima	1st	Community	3	1.70	1.6–1.7	Effective	Unconfirmed illness	[75]	2011
Singapore	1 st	Dance club	1.91	1.9–2.1		Basic	Laboratory confirmed illness	[76]	2010
Singapore	1st	Military	NR	1.91	1.50–2.36	Effective	Laboratory confirmed and unconfirmed illness	[77]	2010
South Africa	1st	Community	2.3	1.43	1.38–1.49	Effective	Laboratory confirmed illness	[78]	2012
South Africa	1st	Community	2.78	1.47	1.30–1.72	Effective	Laboratory confirmed illness	[78]	2012
South Africa	1st	Community	2.78	1.42	1.20–1.71	Effective	Laboratory confirmed illness	[78]	2012
Southern Hemisphere	1st	Community	1.9	1.16–1.53		Effective	Laboratory confirmed illness	[79]	2010
Southern Hemisphere	1st	Community	2.60	1.33	1.28–1.45	Basic	Laboratory confirmed and unconfirmed illness	[80]	2011
Taiwan	1st	Community	1.91	1.14	1.04–1.25	Effective	Laboratory confirmed illness	[81]	2011
Taiwan	1st	Community	NR	1.16	0.98–1.34	Effective	Serology confirmed infection	[82]	2011
Thailand	1st	Community	1.9	1.78	1.67–1.89	Basic	Laboratory confirmed illness	[83]	2009
Thailand	1st	Community	2.6	2.07	1.92–2.22	Basic	Laboratory confirmed illness	[83]	2009
United Kingdom	1st	School	2.2	1.33	1.11–1.56	Effective	Laboratory confirmed illness	[84]	2012
United Kingdom	1st	Community	2.5	1.44	1.27–1.63	Effective	Laboratory confirmed illness	[85]	2009
USA	1st	Community	2.2	1.70	1.4–2.1	Basic	Laboratory confirmed illness	[86]	2009
USA	1st	Community	2.6	2.20	1.4–2.5	Basic	Laboratory confirmed illness	[86]	2009
USA	1st	School	2.7	3.30	3.0–3.6	Effective	Unconfirmed illness	[87]	2009
USA	1st	Community	3.5	1.3–2.0	1.0–2.2	Basic	Laboratory confirmed illness	[11]	2009
USA	1st	Camp attendees	7	2.20	1.4–3.3	Effective	Unconfirmed illness	[88]	2011
Vietnam	1st	Community	1.9	1.50	1.5–1.6	Basic	Laboratory confirmed illness	[89]	2010
Vietnam	1st	Community	3.6	2.00	1.9–2.2	Basic	Laboratory confirmed illness	[89]	2010
worldwide	1st	Community	2.67	1–2		Effective	Laboratory confirmed illness	[90]	2011
China	2nd	Community	4	1.66	1.27–2.05	Effective	confirmed hospitalizations	[91]	2012
China	2nd	Community	4.3	1.70	1.4–1.9	Effective	Laboratory confirmed illness	[92]	2010
France	2nd	Military	2.9	1.5–1.6		Effective	Unconfirmed illness	[93]	2012
Iran	2nd	school	NR	1.28	1.05–1.54	Basic	Unconfirmed illness	[94]	2012
Italy	2nd	Community	2.5	1.33		Effective	Unconfirmed illness	[95]	2011
Japan	2nd	Community	3	1.48	1.41–1.56	Effective	Unconfirmed illness	[96]	2012
Mexico	2nd	Community	3	1.62	1.61–1.63	Effective	Unconfirmed illness	[63]	2011
Reunion Island	2nd	Community	2.8	1.26	1.08–1.49	Effective	Unconfirmed illness	[97]	2010
Taiwan	2nd	Community	1.91	1.02	1.01–1.02	Effective	Laboratory confirmed illness	[81]	2011
Taiwan	2nd	Community	NR	1.87	1.68–2.06	Effective	Serology confirmed infection	[82]	2011
United Kingdom	2nd	Community	2.5	1.30	1.2–1.5	Effective	Laboratory confirmed illness	[98]	2010
Mexico	3rd	Community	3	1.24	1.23–1.24	Effective	Unconfirmed illness	[63]	2011
various		Community	NR	1.30	1.1–1.4	Effective	Serology confirmed infection	[99]	2012

Median reproduction number for the 2009 pandemic: 1.46; Interquartile range 1.30–1.70

^aThe 2009 influenza A/H1N1 pandemic began in Mexico in the late winter or early spring of 2009 [44]. The United States and the United Kingdom experienced a first wave of illnesses in the Spring of 2009 followed by a second wave during the Fall of 2009 [4]. However, unlike these three countries, a number of countries, especially in the Southern Hemisphere, only experienced a single wave of illnesses [100].

^bThe generation time (GT) or serial interval (SI) assumed in the reproduction number estimation.

^cConfidence interval.

NR = Not reported.

This table is also available as a .csv file as Additional file 4.

Table 5 Reproduction numbers from seasonal influenza epidemics

Year(s)	Type/ Subtype	Study population	Mean GT/SI ^a	Reproduction number (R)	95% CI ^b	Basic or effective	Case definition	Reference	Year published
1889– 1890	H3N8?	USA & Europe	2.6	2.10	1.9–2.4	Basic	Unconfirmed deaths	[101]	2010
1948– 1949	H1N1	Canada	4.1	1.30		Effective	Unconfirmed illness	[25]	2006
1949– 1950	H1N1	Canada	4.1	1.50		Effective	Unconfirmed illness	[25]	2006
1950– 1951	H1N1	Canada & UK	4.1	2.00	1.9–2.5	Effective	Unconfirmed deaths	[25]	2006
1958– 1973	H2N2; H3N2; B	United Kingdom	4.48	3.9–7.1		Effective	Unconfirmed illness	[102]	1979
1972– 2002	H1N1/ H3N2/B	Australia	5.5	1.30		Effective	Unconfirmed deaths	[103]	2008
1972– 2002	H1N1/ H3N2/B	France	5.5	1.30		Effective	Unconfirmed deaths	[103]	2008
1972– 2002	H1N1/ H3N2/B	USA	5.5	1.30		Effective	Unconfirmed deaths	[103]	2008
1972– 2002	H1N1/ H3N2/B	USA; France; Australia	5.5	1.30	1.2–1.4	Effective	Unconfirmed deaths	[103]	2008
1975– 2004	H1N1/ H3N2/B	Norway	6	1.06–1.69		Effective	Unconfirmed deaths	[104]	2010
1976– 1981	H1N1/ H3N2/B	USA	2.6	1.70		Basic	Serology confirmed infection	[10]	2006
1976– 1981	H1N1/ H3N2/B	USA	4.1	1.16		Basic	Serology confirmed infection	[105]	2000
1977– 1978	H1N1	United Kingdom	2.2	4.38		Basic	Unconfirmed illness	[106]	2005
1977– 1978	H1N1	United Kingdom	3	21.00		Basic	Unconfirmed illness	[13]	2004
1977– 1978	H1N1	United Kingdom	4.70	16.90		Basic	Unconfirmed illness	[106]	2005
1984– 1985	H1N1/ H3N2	France	2.49	1.37		Effective	Unconfirmed illness	[107]	1988
1985– 2005	H1N1/ H3N2/B	United Kingdom	2.2	1.6–2.1		Basic	Unconfirmed illness	[108]	2010
1985– 2005	H1N1/ H3N2/B	United Kingdom	2.7	1.6–2.5		Basic	Unconfirmed illness	[109]	2012
1985– 2006	H1N1/ H3N2/B	France	2.4	1.4–1.7	1.3–1.8	Basic	Unconfirmed illness	[110]	2008
1996– 2006	H1N1/ H3N2/B	Brazil	3	1.03	1.02–1.04	Effective	Unconfirmed deaths	[111]	2010
1998– 1999	H3N2	Israel	3	1.14		Effective	Unconfirmed illness	[112]	2011
1998– 1999	H3N2	Israel	3	1.16		Effective	Unconfirmed illness	[112]	2011
1998– 1999	H3N2	USA	3	1.18	1.05–1.25	Effective	Laboratory confirmed illness	[113]	2009
1998– 2009	H1N1/ H3N2/B	Israel	2.5	1.17–1.62		Effective	Unconfirmed illness	[114]	2012
1999– 2000	H3N2	Israel	3	1.16		Effective	Unconfirmed illness	[112]	2011
1999– 2000	H3N2	Israel	3	1.18		Effective	Unconfirmed illness	[112]	2011

Table 5 Reproduction numbers from seasonal influenza epidemics (Continued)

1999–2006	Seasonal H1N1	Taiwan	2	1.19	0.76–1.86	Basic	Confirmed and unconfirmed illness	[115]	2010
1999–2006	H3N2	Taiwan	3	1.41	0.92–2.19	Basic	Confirmed and unconfirmed illness	[115]	2010
1999–2006	B	Taiwan	3	1.07	0.69–1.69	Basic	Confirmed and unconfirmed illness	[115]	2010
2000–2001	H1N1	Israel	3	1.12		Effective	Unconfirmed illness	[112]	2011
2000–2009	H1N1/H3N2/B	Italy	4	1.17–1.36		Effective	Unconfirmed illness	[116]	2012
2001–2002	H3N2	Israel	3	1.25		Effective	Unconfirmed illness	[112]	2011
2001–2002	H3N2	Israel	3	1.27		Effective	Unconfirmed illness	[112]	2011
2003–2004	H3N2	Israel	3	1.19		Effective	Unconfirmed illness	[112]	2011
2003–2004	H3N2	Israel	3	1.21		Effective	Unconfirmed illness	[112]	2011
2003–2004	H3N2	Switzerland	2.6	1.2–1.3		Effective	Unconfirmed illness	[117]	2011
2004–2005	H3N2	Israel	3	1.25		Effective	Unconfirmed illness	[112]	2011
2004–2005	H3N2	Israel	3	1.25		Effective	Unconfirmed illness	[112]	2011
2004–2005	unspecified	Taiwan	4.1	1.00		Effective	Unconfirmed deaths	[118]	2010
2004–2005	H3N2	USA	7	1.20	1.1–1.3	Effective	Laboratory confirmed illness	[119]	2008
2006–2007	H3N2	Israel	3	1.28		Effective	Unconfirmed illness	[112]	2011
2006–2007	H3N2	Israel	3	1.33		Effective	Unconfirmed illness	[112]	2011
2007–2008	H3N2	Israel	3	1.25		Effective	Unconfirmed illness	[112]	2011
2007–2008	H3N2	Israel	3	1.29		Effective	Unconfirmed illness	[112]	2011
2011/12	H1N1	Mexico	3	1.20		Effective	Laboratory confirmed hospitalizations	[120]	2012
2011/12	H1N1	Mexico	3	1.20		Effective	Laboratory confirmed hospitalizations	[121]	2012
2011/12	H1N1	Mexico	4	1.30		Effective	Laboratory confirmed hospitalizations	[121]	2012

Median reproduction number for seasonal influenza: 1.28; Interquartile range 1.19–1.37

^aThe generation time (GT) or serial interval (SI) assumed in the reproduction number estimation

^bConfidence interval

NR = Not reported

This table is also available as a .csv file as Additional file 5.

(26%). The mean generation time or serial interval used in the calculations to determine R had a median value of 2.8 days, and the mean ranged from 1.9–7 days (Table 4). A majority of the studies included for the 2009 pandemic relied on either laboratory-confirmed illnesses (71%) or unconfirmed illnesses (24%) to identify those ill (Table 4).

Seasonal influenza

Seasonal influenza causes sustained epidemics in the non-tropical areas of the Northern Hemisphere and Southern Hemisphere during their respective late fall to early spring months. Epidemics in the tropical regions occur sporadically but can be associated with the rainy season [1]. The

Table 6 Reproduction numbers from novel influenza outbreaks

Year(s)	Subtype	Study Population	Mean GT/SI ^a	Reproduction number (R)	95% CI ^b	Basic or Effective	Case definition	Reference	Year Published
1976	H1N1	New Jersey	1.9	1.20	1.1–1.4	Basic	Serologically confirmed illness	[122]	2007
2004–2006	H5N1	Vietnam	7	0.00	0–0.42	Effective	Laboratory confirmed illness	[119]	2008
2004–2006	H5N1	Indonesia	7	0.00	0–0	Effective	Laboratory confirmed illness	[119]	2008
2005	H5N1	Turkey	9.5	<1		Basic	Laboratory confirmed illness	[123]	2007
2005–2009	H5N1	Indonesia	6	0.1–0.25	0–0.4	Effective	Laboratory confirmed illness	[124]	2012
2006	H5N1	Indonesia	9.5	1.14	0.61–2.14	Basic	Laboratory confirmed illness	[123]	2007

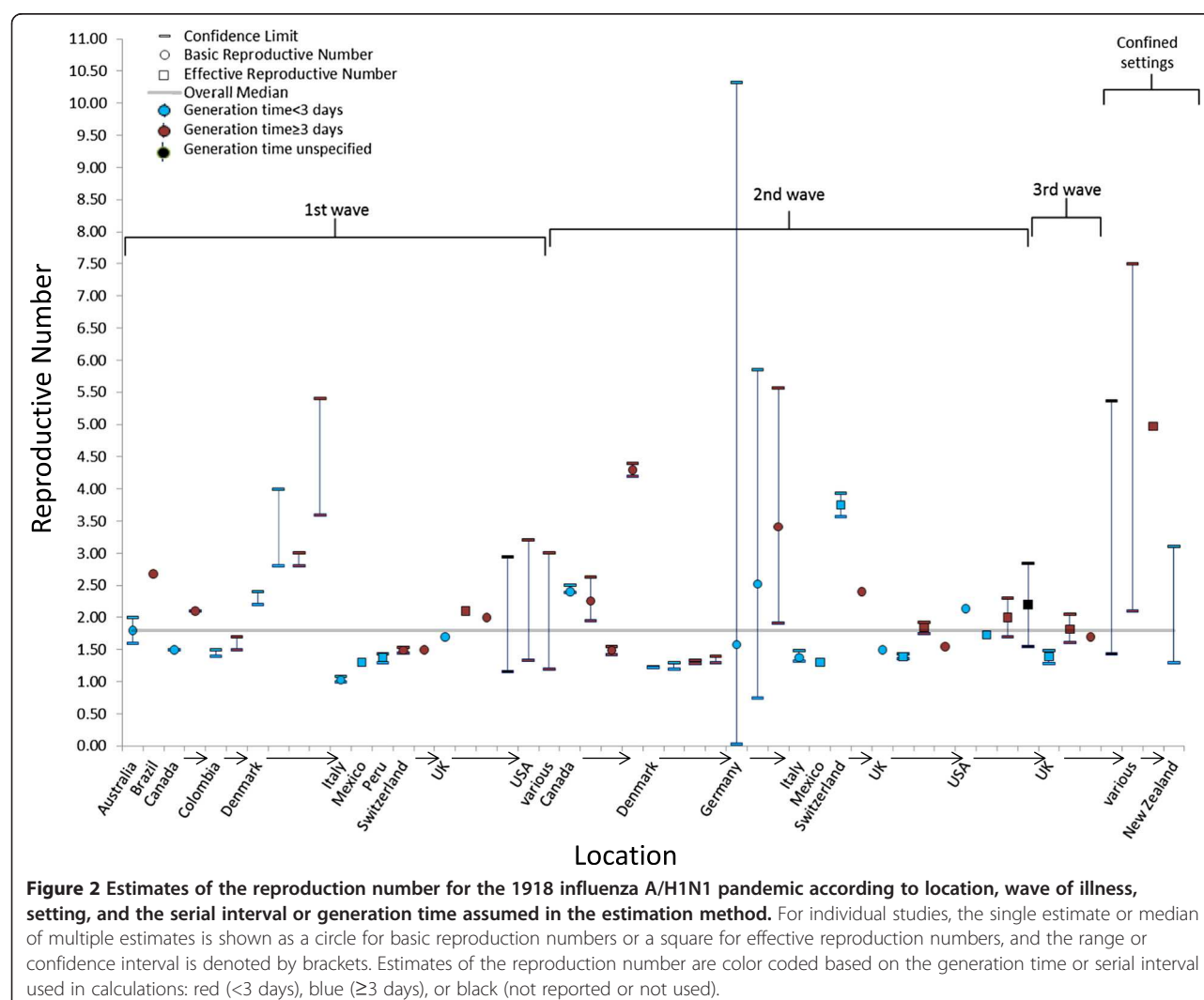
Median reproduction number for novel influenza outbreaks: 0.34; Interquartile range 0.05–0.98

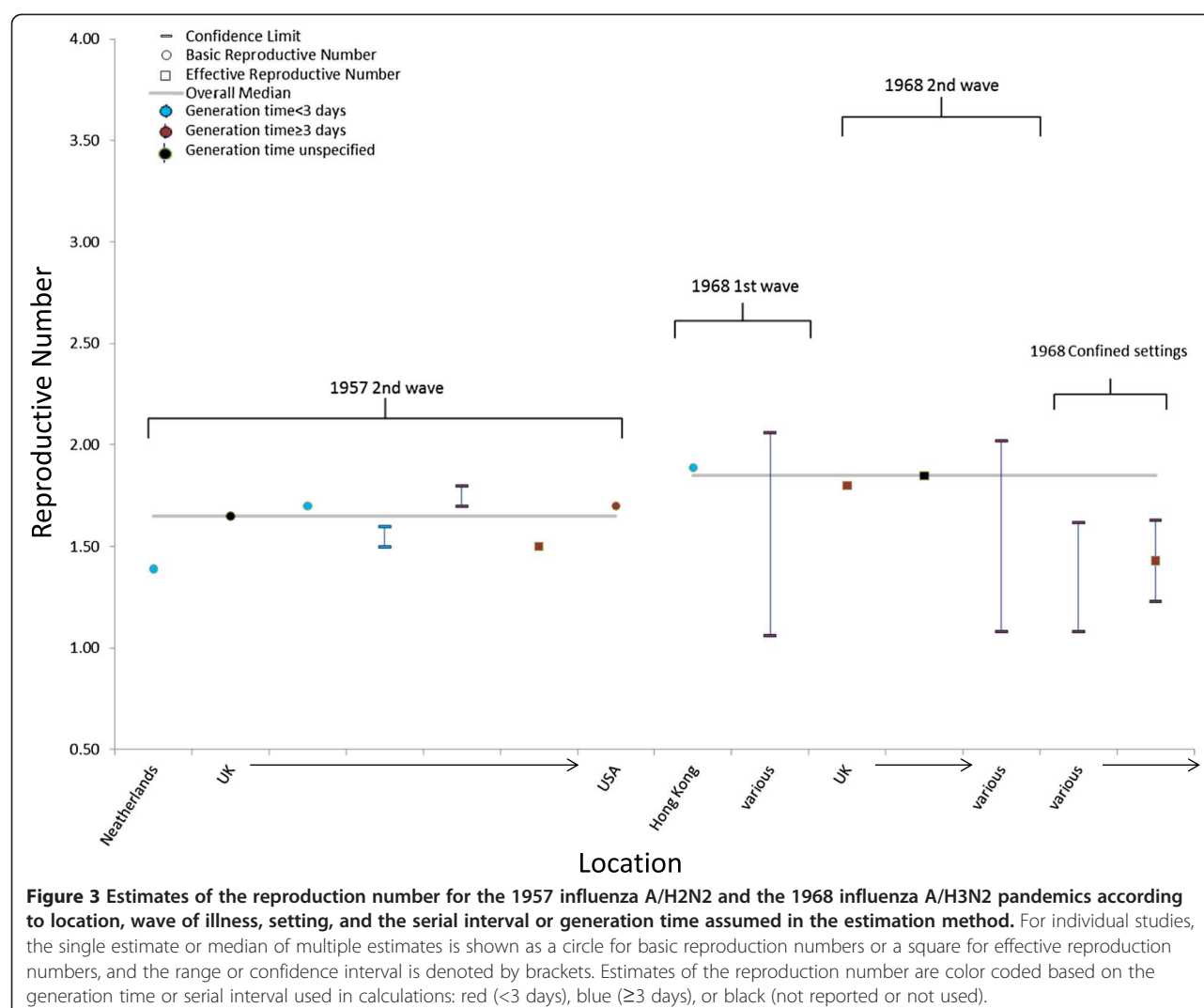
^aThe generation time (GT) or serial interval (SI) assumed in the reproduction number estimation.

NR = Not reported.

^bConfidence interval.

This table is also available as a .csv file as Additional file 6.





mortality burden from influenza varies by season, and from 1976–2007, estimates of annual influenza-associated deaths in the United States from respiratory and circulatory causes ranged from 3,000 to 49,000 [3].

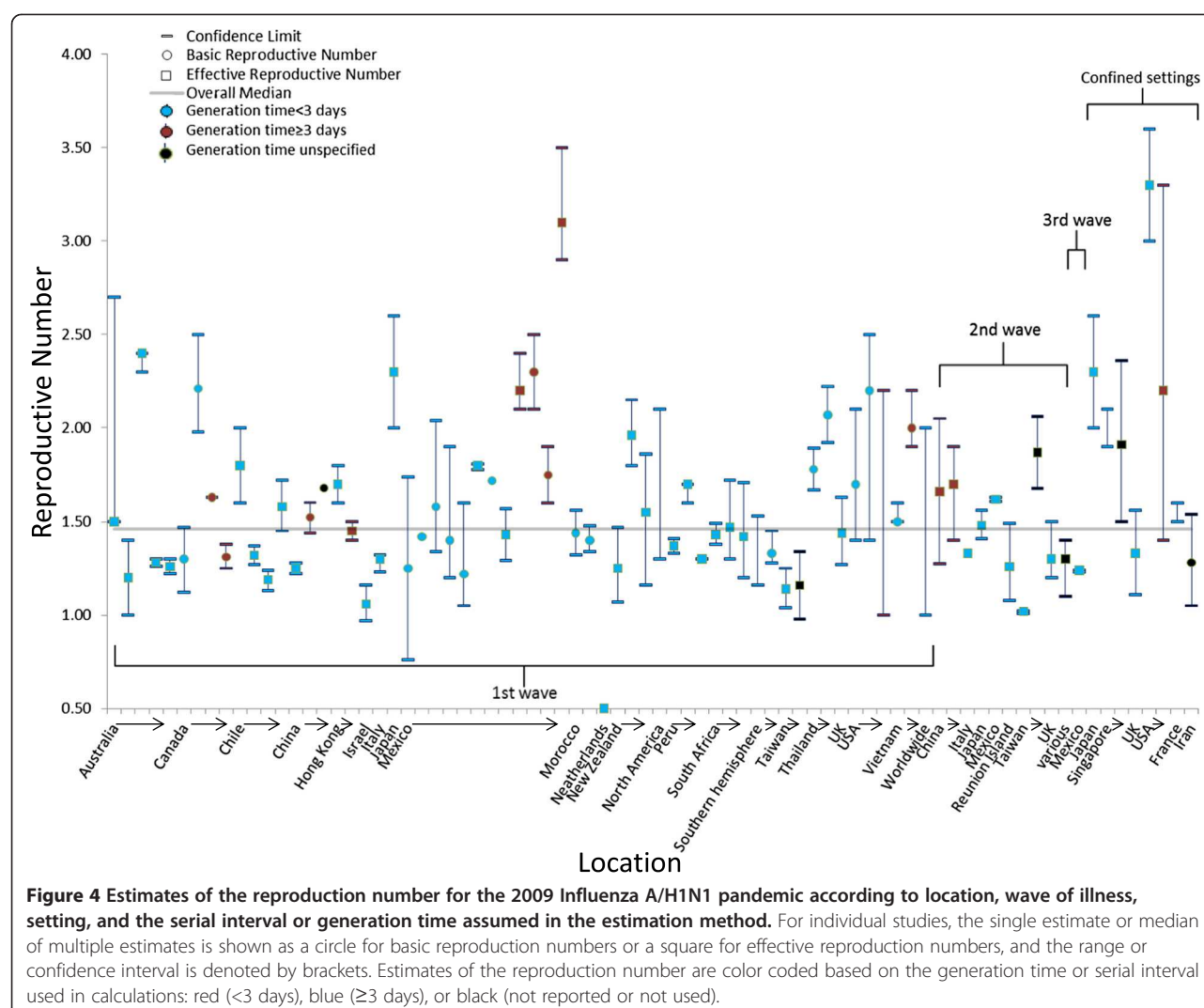
Twenty-four studies reported 47 separate seasonal epidemic values of R (Table 5; Figure 5). The median point estimate of R in the community setting for seasonal influenza was 1.27 (IQR: 1.19–1.37) while a higher median R value ($R = 16.9$) was reported in a British boarding school during the 1977–78 influenza season (Table 5). R values for seasons where H3N2 ($R = 1.25$; IQR: 1.18–1.27) or H1N1 ($R = 1.25$; IQR: 1.18–1.35) predominated were equivalent (Table 5).

A majority of seasonal influenza values for R were calculated for populations in Israel (35%), Europe (25%), and North America (21%). The mean generation time or serial interval used in the calculations to determine R had a median value of 3.0 days, and the mean ranged

from 2.0–7.0 days (Table 5). A majority of the studies included for seasonal influenza relied on unconfirmed illnesses or deaths (79%); the reminder relied on either laboratory-confirmed illnesses or hospitalizations or serologically-confirmed infections (Table 5).

Human infections with non-human influenza viruses

Human infections with novel or non-human influenza viruses (also known as zoonotic influenza viruses) are rare but can result in a pandemic if sustained person-to-person transmission occurs and the population has little or no pre-existing population immunity to the virus. Therefore, instances of infection with non-human influenza viruses are investigated thoroughly to assess the transmissibility of the virus. The largest number of novel influenza cases at the time of this review was from the ongoing influenza A/H5N1 outbreak centered in Southeast Asia and the Middle



East. From January, 1, 2003 to February 15, 2013, 620 laboratory-confirmed cases have been reported to the WHO, of which 367 have died [127]. Another large outbreak of novel influenza occurred in 1976 in Fort Dix, New Jersey, which was caused by an influenza A/H1N1 virus similar to those found circulating in swine [122].

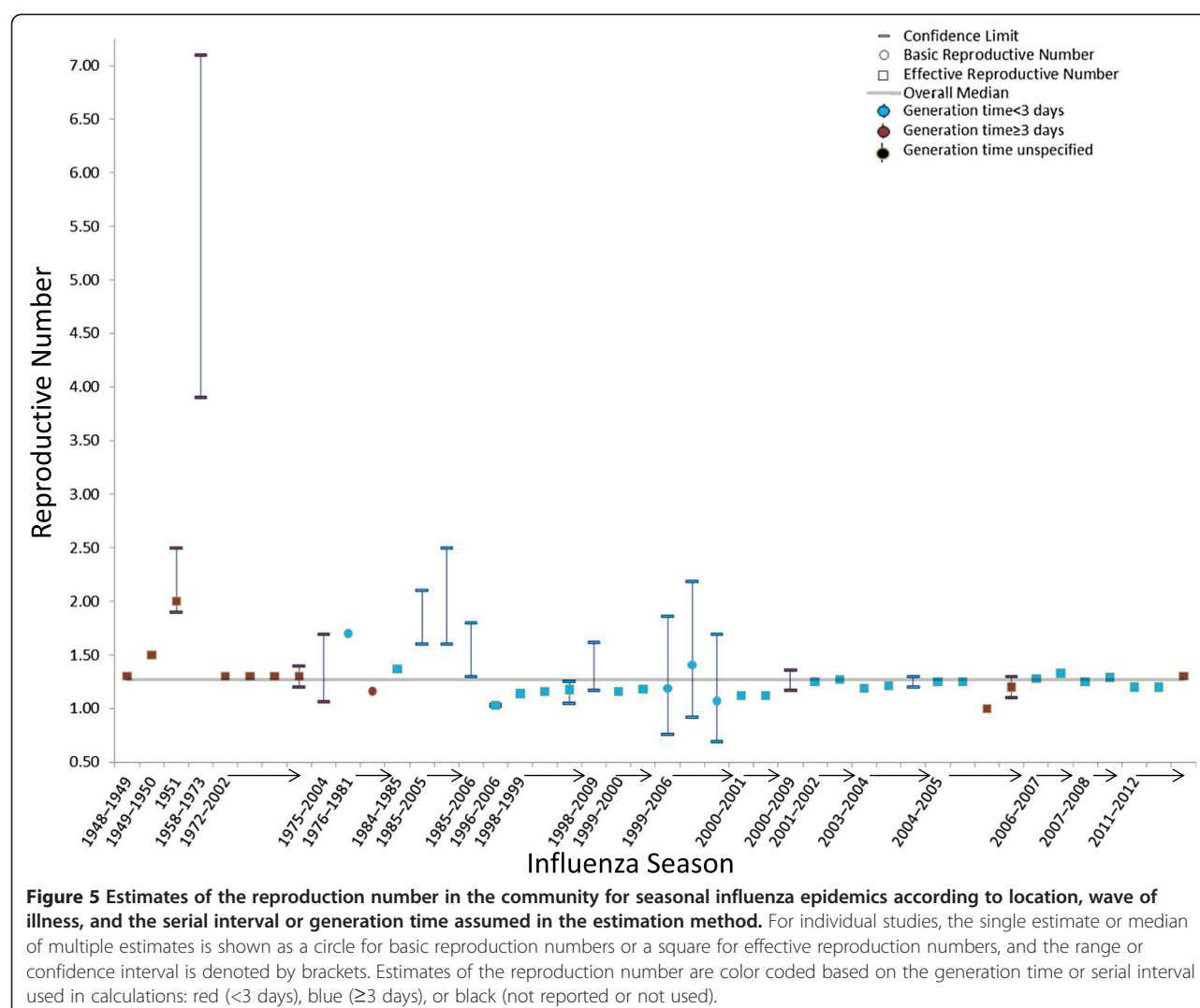
Four studies estimated the values of R for the A/H5N1 and A/H1N1 outbreaks (Table 6). Four out of six estimates (67%) of R were less than one, and the highest R estimate ($R = 1.2$) was for the 1976 A/H1N1 outbreak in a New Jersey military camp (a confined setting) (Table 6).

A majority of novel A virus R values were calculated for populations in Southeast Asia (67%), indicative of where the bulk of A/H5N1 bird-to-human transmission occurs. The mean generation time or serial interval used in the calculations to determine R had a median value of 7.0 days,

and the mean ranged from 1.9–9.5 days (Table 6). All studies relied on either laboratory-confirmed illness or serological-confirmed infection (Table 6).

Discussion

In this review, the median R values reported for the four pandemics and seasonal influenza varied between 1.27–1.8 while R values for novel influenza were generally below 1. We found the highest median reproduction number associated with the 1918 and the 1968 influenza pandemics (both 1.8), followed by the 1957 pandemic (1.65), the 2009 pandemic (1.46), seasonal influenza epidemics (1.27), and novel influenza outbreaks. A majority of R values published were for either the 1918 pandemic or the 2009 pandemic; the 1957 and 1968 pandemics had the fewest published studies. Researchers calculated values for R for a variety of locations and utilized many



different case definitions, ascertainment methods, and assumptions about the generation time or serial interval.

The approximate basic reproductive numbers for some common infectious diseases range from 12–18 for measles, 12–17 for pertussis, and 4–7 for mumps, polio, rubella, and smallpox [12]. These values are much higher than what has been reported for influenza, and most R values reported in this review ranged from 1.0–2.0. However, the overall clinical attack rate and peak daily incidence of an outbreak, which measures the potential burden on healthcare services and school and workplace absenteeism, are very sensitive to changes in the value of R within this range. Past research utilizing a number of assumptions on the symptomatic ratio, contact patterns, and seeding has estimated that the cumulative clinical attack rates for a pandemic when $R = 1.3$ ranged from 15%–21% and increased to 34%–42% for $R = 2.0$ [10,11]. Similarly, the peak daily attack rate is 0.5% for $R = 1.3$

and 2.2% for $R = 2.0$ [10]. Therefore, with only an absolute difference in R of 0.7, the clinical attack rates in these studies more than doubled and the peak daily incidence more than quadrupled.

Differences in the value of R within this range also affect the evaluation of potential mitigation strategies (e.g., school closures, vaccination, household isolation) for influenza pandemics. Analysis of strategies to mitigate an influenza pandemic have found that the effectiveness of non-travel-related control policies, such as school closures, household quarantine, and vaccination, would decrease as the value of R increases from 1.0 to 2.0 [10]. The success of various vaccination strategies would also be more likely for values of $R < 1.7$ [10,11]. Therefore, the small variations in pandemic R estimates found in this analysis can have important implications for the overall impact and success of mitigation efforts for an influenza pandemic. This finding highlights the importance

of making precise estimates of R early in a pandemic. Further research should focus on refining methods that allow for early, robust estimates of R .

The results of this analysis reinforce the idea that R is a measure that captures the transmissibility of an influenza virus in the population under study and is not an intrinsic value. The inputs for its calculation can include the population contact rate, the probability of infection per contact, the duration of illness, and the percentage of the population that is susceptible which is affected by the characteristics of the population under study. Therefore, the variations in the value for R for the same pandemic or seasonal outbreak are expected and may be due to the underlying social and socio-demographic factors of the population studied, public health interventions, and geographical or climatic factors of the location. These variations include the percentage of the source's population under 18 years old; differences in contact patterns between age groups, which vary by country [128,129]; and differences in population susceptibility profiles, which varied by age group for the 2009 pandemic [130]. Another important factor that may contribute to the variation is the season from which data used to estimate R is collected. While the effect of weather on the transmissibility of influenza has not been fully explored, some studies have shown that the level of absolute humidity is inversely correlated with influenza transmissibility [131,132]. Therefore, estimates of R should be interpreted in the context of the population under study and the season in which data was collected and direct comparisons of R between populations should be undertaken with caution.

Variations in the estimated values of R may also be driven by changes in surveillance intensity in the same country over time. If a country suddenly improves its surveillance system in response to a pandemic and is better able to identify cases, then the number of cases being reported will increase, even though the actual number of cases occurring will not have changed. This increase in the reported number of cases may increase the estimated R as the growth rate of the outbreak will increase [86]. Conversely, the value of R could be artificially lowered if countries implement changes in surveillance practices that result in a lower number of identified cases, such as reducing screening recommendations, or have their surveillance systems overwhelmed. This effect was seen in the United States during the 2009 pandemic, when influenza testing for every case became unfeasible and testing recommendations were changed [4].

One of the more important methodological assumptions that can have a large impact on the estimated value of R is the length of the serial interval or generation time used during the estimation of R . Longer serial intervals have previously been associated with higher estimates of

R when compared to estimates from the same dataset using shorter serial intervals [9]. In this analysis, estimates of R from the 1918, 1957, and 1968 pandemics utilized higher serial interval values than were used for the 2009 pandemic or for seasonal influenza. Additionally, higher values of R from the 2009 pandemic often were estimated using a generation time or serial interval of 3 days or more (Figure 4). Therefore, the estimates of R included in this analysis should be interpreted in the context of the serial intervals or generation times used in the estimation method. Like R , the values for the generation time or the serial interval can vary by the source population. Therefore, researchers estimating the values of R should strive to use standard estimates of the serial interval or generation time for influenza or at least include common values in a sensitivity analysis. This will help with the comparability of R values across studies and may aid in the correct interpretation of R estimates. An additional way in which estimates of R may be biased up or down lies in the choice of estimation procedure itself. Chowell et al. showed that estimates of R obtained using simple epidemic mathematical models varied considerably as the model increased in complexity (e.g. the addition of a period of infection latency or an age-structured population) [35].

Although we found no difference in the value of R for studies using confirmed cases versus unconfirmed cases in the estimation method, the trade-off between the accuracy of the less specific but more efficient and cost effective syndromic data compared to laboratory-confirmed influenza infections is unknown. The incubation periods of non-influenza respiratory pathogens that co-circulate with influenza (e.g. respiratory syncytial virus or rhinovirus) range from a median of 1.9–5.6 days; estimates of R for influenza could either be overestimated or underestimated during periods of co-circulation, depending on the intensity and identity of the co-circulating respiratory pathogen [87]. Future research should focus on estimation of R using laboratory-confirmed cases and hospitalizations and should provide estimates from syndromic data for comparison.

Most studies included in this analysis focused on 1918 or the 2009 pandemic. Only a small number of estimates of the reproduction number have been reported for the two other pandemics of the 20th century (1957 and 1968). As a consequence, there is still insufficient information to fully clarify the transmission dynamics of the 1957 and 1968 pandemics. Because historical data are available for these pandemics, future research should focus on estimations of R for the 1957 and 1968 pandemics to better understand the characteristics of these pandemics.

This study generally found higher reproduction numbers for confined settings, such as schools, military

bases, or night clubs, except for estimates from the 1968 pandemic. Because confined settings increase the intensity of transmission by increasing contact rates among those ill and well, the values of R presented for outbreaks in confined settings are likely to be much higher than values of R estimated for the community and should be interpreted accordingly. While the estimation of R in confined settings may be useful for the assessment of the upper bounds of transmissibility, its value is not directly comparable to estimates of R made in the community setting.

This review found, with one exception, a high degree of consistency in the estimated values of R for seasonal influenza epidemics. The only notable exception was the extremely high R values estimated for an outbreak of influenza A (H1N1) in 1978 at a small British boarding school with 763 male students aged 10–18 who were mostly full boarders [133]. The results of this analysis suggest that the extreme R values reported for this outbreak are not typical of seasonal or pandemic influenza and instead may be the result of the lack of pre-existing immunity among the students to the strain of influenza A (H1N1) that caused the outbreak, the extremely high contact rates likely among a group of boarded students, or a study artifact related to the small number of students in the study population [13,106,133]. Additionally, the median R value of seasonal influenza ($R = 1.27$) is well below the median values seen during the four pandemics examined in this report. The consistency of seasonal R values is even more remarkable given the wide variety of estimation methods, data sources, and assumptions used in the studies included here. However, the majorities of seasonal influenza estimates were from a small number of countries. Estimates of R from countries in Africa, Asia, and South America are also needed to determine if values of R for seasonal influenza epidemics are affected by geographic and social factors.

This systematic review is subject to at least three limitations. First, we combined estimates for the basic and effective reproductive numbers when presenting the median estimates in this study. Even though these values measure transmission in populations with differing levels of underlying population immunity, some papers included in this review did not clearly differentiate between basic and effective reproductive numbers or state the required population immunity assumptions when reporting basic reproductive numbers. Therefore, we choose to present summary values for the basic and effective reproductive numbers together to simplify the results. The tables include whether the reproductive number estimate was reported as basic or effective for each study. Second, we did not assess included studies for the type or quality of their methodology or the risk of study bias. Finally, we only included published

estimates of the reproductive number, which may not be representative of unpublished reproductive number values.

Conclusions

In this review, we explored the ranges and uncertainty of the values of R estimated for seasonal, pandemic, and novel influenza. We found that values of R changed over the course of a pandemic but the effect of the waves varied. The value of R is not constant and may be affected by mitigation strategies, the season, and the population under study. The values of R found in this analysis represent the difference between a pandemic that is controllable with less intensive mitigation strategies and would cause moderate amounts of illness to a pandemic that would require very intensive mitigation strategies and would cause greater amounts of illness. Continued monitoring of R during outbreaks of human infections with non-human influenza viruses and in various settings throughout future pandemics will be required to fully understand the effects of mitigation, geography, and season.

Additional files

Additional file 1: Reproduction Numbers from the 1918 Influenza A/H1N1 Pandemic.

Additional file 2: Reproduction Numbers from the 1957 Influenza A/H2N2 Pandemic.

Additional file 3: Reproduction Numbers from the 1968 Influenza A/H3N2 Pandemic.

Additional file 4: Reproduction Numbers from the 2009 Influenza A/H1N1 Pandemic.

Additional file 5: Reproduction Numbers from Seasonal Influenza Epidemics.

Additional file 6: Reproduction Numbers from Novel Influenza Outbreaks.

Competing interest

The authors declare that they have no financial or non-financial competing interests with the publication of this manuscript.

Authors' contributions

MB led the data collection, analysis, and the writing of the article. SC led the editing of the article and assisted with data interpretation. CR and MG contributed significantly to data interpretation and reviewed multiple drafts of the article. LF contributed to the design of the study, data interpretation, and reviewed multiple drafts of the article. All authors read and approved the final manuscript.

Acknowledgements

We are particularly grateful for the assistance in the preparation and editing of the manuscript given by Alejandro Perez and Dr. Claudia Campbell.

Disclaimer

The findings and conclusions in this report are those of the authors and do not necessarily represent the official position of the Centers for Disease Control and Prevention.

Author details

¹Epidemiology and Prevention Branch, Influenza Division, National Center for Immunization and Respiratory Diseases, Centers for Disease Control and Prevention, 1600 Clifton Road NE MS A-32, Atlanta 30333, Georgia.

²Mathematical Modelling of Infectious Diseases Unit, Institut Pasteur, Paris, France. ³National Center for Immunization and Respiratory Diseases, CDC, Atlanta, Georgia.

Received: 11 April 2014 Accepted: 28 August 2014

Published: 4 September 2014

References

- Cox NJ, Subbarao K: Global epidemiology of influenza: past and present. *Annu Rev Med* 2000, **51**:407–421.
- Sullivan KM, Monto AS, Longini IM Jr: Estimates of the US health impact of influenza. *Am J Public Health* 1993, **83**(12):1712–1716.
- Centers for Disease Control and Prevention: Estimates of deaths associated with seasonal influenza -- United States, 1976–2007. *MMWR Morb Mortal Wkly Rep* 2010, **59**(33):1057–1062.
- Jhung MA, Swerdlow D, Olsen SJ, Jernigan D, Biggerstaff M, Kamimoto L, Kniss K, Reed C, Fry A, Brammer L, Gindler J, Gregg WJ, Bresee J, Finelli L: Epidemiology of 2009 pandemic influenza A (H1N1) in the United States. *Clin Infect Dis* 2011, **52**(Suppl 1):S13–S26.
- Reed C, Biggerstaff M, Finelli L, Koonin LM, Beauvais D, Uzicanin A, Plummer A, Bresee J, Redd SC, Jernigan DB: Novel framework for assessing epidemiologic effects of influenza epidemics and pandemics. *Emerg Infect Dis* 2013, **19**(1):85–91.
- Anderson RM, May RM: *Infectious diseases of humans : dynamics and control*. Oxford. New York: Oxford University Press; 1991.
- Heffernan JM, Smith RJ, Wahl LM: Perspectives on the basic reproductive ratio. *Journal of the Royal Society, Interface / the Royal Society* 2005, **2**(4):281–293.
- Li J, Blakeley D, Smith RJ: The failure of R0. *Computational and mathematical methods in medicine* 2011, **2011**:527610.
- Boelle PY, Ansart S, Cori A, Valleron AJ: Transmission parameters of the A/H1N1 (2009) influenza virus pandemic: a review. *Influenza Other Respi Viruses* 2011, **5**(5):306–316.
- Ferguson NM, Cummings DA, Fraser C, Cajka JC, Cooley PC, Burke DS: Strategies for mitigating an influenza pandemic. *Nature* 2006, **442**(7101):448–452.
- Yang Y, Sugimoto JD, Halloran ME, Basta NE, Chao DL, Matrajt L, Potter G, Kenah E, Longini IM Jr: The transmissibility and control of pandemic influenza A (H1N1) virus. *Science (New York, NY)* 2009, **326**(5953):729–733.
- Fine PE: Herd immunity: history, theory, practice. *Epidemiol Rev* 1993, **15**(2):265–302.
- Fraser C, Riley S, Anderson RM, Ferguson NM: Factors that make an infectious disease outbreak controllable. *Proc Natl Acad Sci U S A* 2004, **101**(16):6146–6151.
- Wallinga J, Lipsitch M: How generation intervals shape the relationship between growth rates and reproductive numbers. *Proc Biol Sci* 2007, **274**(1609):599–604.
- Caley P, Philp DJ, McCracken K: Quantifying social distancing arising from pandemic influenza. *Journal of the Royal Society, Interface / the Royal Society* 2008, **5** (23):631–639.
- Massad E, Burattini MN, Coutinho FA, Lopez LF: The 1918 influenza A epidemic in the city of Sao Paulo, Brazil. *Med Hypotheses* 2007, **68**(2):442–445.
- Sattenspiel L: Regional patterns of mortality during the 1918 influenza pandemic in Newfoundland. *Vaccine* 2011, **29**(Suppl 2):B33–B37.
- Chowell G, Viboud C, Simonsen L, Miller MA, Acuna-Soto R, Diaz JM, Martinez-Martin AF: The 1918–19 influenza pandemic in Boyaca, Colombia. *Emerg Infect Dis* 2012, **18**(1):48–56.
- Andreasen V, Viboud C, Simonsen L: Epidemiologic characterization of the 1918 influenza pandemic summer wave in Copenhagen: implications for pandemic control strategies. *J Infect Dis* 2008, **197**(2):270–278.
- Rizzo C, Ajelli M, Merler S, Pugliese A, Barbeta I, Salmaso S, Manfredi P: Epidemiology and transmission dynamics of the 1918–19 pandemic influenza in Florence, Italy. *Vaccine* 2011, **29**(Suppl 2):B27–B32.
- Chowell G, Viboud C, Simonsen L, Miller MA, Acuna-Soto R: Mortality patterns associated with the 1918 influenza pandemic in Mexico: evidence for a spring herald wave and lack of preexisting immunity in older populations. *J Infect Dis* 2010, **202**(4):567–575.
- Chowell G, Viboud C, Simonsen L, Miller MA, Hurtado J, Soto G, Vargas R, Guzman MA, Ulloa M, Munayco CV: The 1918–1920 influenza pandemic in Peru. *Vaccine* 2011, **29** (Suppl 2):B21–B26.
- Chowell G, Ammon CE, Hengartner NW, Hyman JM: Estimation of the reproductive number of the Spanish flu epidemic in Geneva, Switzerland. *Vaccine* 2006, **24**(44–46):6747–6750.
- Rios-Doria D, Chowell G: Qualitative analysis of the level of cross-protection between epidemic waves of the 1918–1919 influenza pandemic. *J Theor Biol* 2009, **261**(4):584–592.
- Viboud C, Tam T, Fleming D, Handel A, Miller MA, Simonsen L: Transmissibility and mortality impact of epidemic and pandemic influenza, with emphasis on the unusually deadly 1951 epidemic. *Vaccine* 2006, **24**(44–46):6701–6707.
- Gani R, Hughes H, Fleming D, Griffin T, Medlock J, Leach S: Potential impact of antiviral drug use during influenza pandemic. *Emerg Infect Dis* 2005, **11**(9):1355–1362.
- Mathews JD, McBryde ES, McVernon J, Pallaghy PK, McCaw JM: Prior immunity helps to explain wave-like behaviour of pandemic influenza in 1918–9. *BMC Infect Dis* 2010, **10**:128.
- White LF, Pagano M: Transmissibility of the influenza virus in the 1918 pandemic. *PLoS One* 2008, **3**(1):e1498.
- Vynnycky E, Trindall A, Mangtani P: Estimates of the reproduction numbers of Spanish influenza using morbidity data. *Int J Epidemiol* 2007, **36**(4):881–889.
- Zhang S, Yan P, Winchester B, Wang J: Transmissibility of the 1918 pandemic influenza in Montreal and Winnipeg of Canada. *Influenza Other Respi Viruses* 2010, **4**(1):27–31.
- Nishiura H: Time variations in the transmissibility of pandemic influenza in Prussia, Germany, from 1918–19. *Theor Biol Med Model* 2007, **4**:20.
- Sertsou G, Wilson N, Baker M, Nelson P, Roberts MG: Key transmission parameters of an institutional outbreak during the 1918 influenza pandemic estimated by mathematical modelling. *Theor Biol Med Model* 2006, **3**:38.
- Chowell G, Bettencourt LM, Johnson N, Alonso WJ, Viboud C: The 1918–1919 influenza pandemic in England and Wales: spatial patterns in transmissibility and mortality impact. *Proc Biol Sci* 2008, **275**(1634):501–509.
- Goldstein E, Dushoff J, Ma J, Plotkin JB, Earn DJ, Lipsitch M: Reconstructing influenza incidence by deconvolution of daily mortality time series. *Proc Natl Acad Sci U S A* 2009, **106**(51):21825–21829.
- Chowell G, Nishiura H, Bettencourt LM: Comparative estimation of the reproduction number for pandemic influenza from daily case notification data. *Journal of the Royal Society, Interface / the Royal Society* 2007, **4**(12):155–166.
- Mills CE, Robins JM, Lipsitch M: Transmissibility of 1918 pandemic influenza. *Nature* 2004, **432**(7019):904–906.
- Glezen WP: Emerging infections: pandemic influenza. *Epidemiol Rev* 1996, **18**(1):64–76.
- Nishiura H: Time variations in the generation time of an infectious disease: implications for sampling to appropriately quantify transmission potential. *Mathematical biosciences and engineering : MBE* 2010, **7**(4):851–869.
- Vynnycky E, Edmunds WJ: Analyses of the 1957 (Asian) influenza pandemic in the United Kingdom and the impact of school closures. *Epidemiol Infect* 2008, **136**(2):166–179.
- Longini IM Jr, Halloran ME, Nizam A, Yang Y: Containing pandemic influenza with antiviral agents. *Am J Epidemiol* 2004, **159**(7):623–633.
- Langmuir AD: Epidemiology of Asian influenza. With special emphasis on the United States. *Am Rev Respir Dis* 1961, **83**(2):2–14. Pt 2.
- Longini IM Jr, Fine PE, Thacker SB: Predicting the global spread of new infectious agents. *Am J Epidemiol* 1986, **123**(3):383–391.
- Jackson C, Vynnycky E, Mangtani P: Estimates of the transmissibility of the 1968 (Hong Kong) influenza pandemic: evidence of increased transmissibility between successive waves. *Am J Epidemiol* 2010, **171**(4):465–478.
- Hsieh YH, Ma S, Velasco Hernandez JX, Lee VJ, Lim WY: Early outbreak of 2009 influenza A (H1N1) in Mexico prior to identification of pH1N1 virus. *PLoS One* 2011, **6**(8):e23853.

45. Kelly HA, Mercer GN, Fielding JE, Dowse GK, Glass K, Carcione D, Grant KA, Effler PV, Lester RA: **Pandemic (H1N1) 2009 influenza community transmission was established in one Australian state when the virus was first identified in North America.** *PLoS One* 2010, **5**(6):e11341.
46. McBryde E, Bergeri I, van Gemert C, Rotty J, Headley E, Simpson K, Lester R, Hellard M, Fielding J: **Early transmission characteristics of influenza A (H1N1)v in Australia: Victorian state, 16 May - 3 June 2009.** *Euro Surveill* 2009, **14**(42).
47. Buckley D, Bulger D: **Estimation of the reproductive number for the 2009 pandemic H1N1 influenza in rural and metropolitan New South Wales.** *The Australian journal of rural health* 2011, **19**(2):59-63.
48. Hsieh YH, Fisman DN, Wu J: **On epidemic modeling in real time: an application to the 2009 novel A (H1N1) influenza outbreak in Canada.** *BMC research notes* 2010, **3**:283.
49. Mostaco-Guidolin LC, Bowman CS, Greer AL, Fisman DN, Moghadas SM: **Transmissibility of the: H1N1 pandemic in remote and isolated Canadian communities: a modelling study.** *BMJ open* 2009, **2012**:2(5).
50. Tuite AR, Greer AL, Whelan M, Winter AL, Lee B, Yan P, Wu J, Moghadas S, Buckeridge D, Pourbohloul B, Fisman DN: **Estimated epidemiologic parameters and morbidity associated with pandemic H1N1 influenza.** *CMAJ* 2010, **182**(2):131-136.
51. Chilean Task Force for study of Pandemic Influenza A, Pedroni E, Garcia M, Espinola V, Guerrero A, Gonzalez C, Olea A, Calvo M, Martorell B, Winkler M, Carrasco M, Vergara J, Ulloa J, Carrazana A, Mujica O, Villarroel J, Labrana M, Vargas M, Gonzalez P, Caceres L, Zamorano C, Momberg R, Munoz G, Rocco J, Bosque V, Gallardo A, Elgueta J, Vega J: **Outbreak of 2009 pandemic influenza A(H1N1), Los Lagos, Chile, April-June 2009.** *Euro Surveill* 2010, **15**(1).
52. Chowell G, Towers S, Viboud C, Fuentes R, Sotomayor V, Simonsen L, Miller MA, Lima M, Villarroel C, Chiu M, Villarroel JE, Olea A, Villarroel JE, Olea A: **The influence of climatic conditions on the transmission dynamics of the 2009 A/H1N1 influenza pandemic in Chile.** *BMC Infect Dis* 2012, **12**:298.
53. Yu H, Cauchemez S, Donnelly CA, Zhou L, Feng L, Xiang N, Zheng J, Ye M, Huai Y, Liao Q, Peng Z, Feng Y, Jiang H, Yang W, Wang Y, Ferguson NM, Feng Z: **Transmission dynamics, border entry screening, and school holidays during the 2009 influenza A (H1N1) pandemic.** *China Emerg Infect Dis* 2012, **18**(5):758-766.
54. Tan X, Yuan L, Zhou J, Zheng Y, Yang F: **Modeling the initial transmission dynamics of influenza A H1N1 in Guangdong Province, China.** *International journal of infectious diseases : IJID : official publication of the International Society for Infectious Diseases* 2012.
55. Jin Z, Zhang J, Song LP, Sun GQ, Kan J, Zhu H: **Modelling and analysis of influenza A (H1N1) on networks.** *BMC Public Health* 2011, **11**(Suppl 1):S9.
56. Wu JT, Cowling BJ, Lau EH, Ip DK, Ho LM, Tsang T, Chuang SK, Leung PY, Lo SV, Liu SH, Riley S: **School closure and mitigation of pandemic (H1N1) 2009, Hong Kong.** *Emerg Infect Dis* 2010, **16**(3):538-541.
57. Cowling BJ, Lau MS, Ho LM, Chuang SK, Tsang T, Liu SH, Leung PY, Lo SV, Lau EH: **The effective reproduction number of pandemic influenza: prospective estimation.** *Epidemiology (Cambridge, Mass)* 2010, **21**(6):842-846.
58. Katriel G, Yaari R, Huppert A, Roll U, Stone L: **Modelling the initial phase of an epidemic using incidence and infection network data: 2009 H1N1 pandemic in Israel as a case study.** *Journal of the Royal Society, Interface / the Royal Society* 2011, **8**(59):856-867.
59. Dorigatti I, Cauchemez S, Pugliese A, Ferguson NM: **A new approach to characterising infectious disease transmission dynamics from sentinel surveillance: application to the Italian 2009-2010 A/H1N1 influenza pandemic.** *Epidemics* 2012, **4**(1):9-21.
60. Nishiura H, Castillo-Chavez C, Safan M, Chowell G: **Transmission potential of the new influenza A(H1N1) virus and its age-specificity in Japan.** *Euro Surveill* 2009, **14**(22).
61. Fraser C, Donnelly CA, Cauchemez S, Hanage WP, Van Kerkhove MD, Hollingsworth TD, Griffin J, Baggaley RF, Jenkins HE, Lyons EJ, Jombart T, Hinsley WR, Grassly NC, Balloux F, Ghani AC, Ferguson NM, Rambaut A, Pybus OG, Lopez-Gatell H, Alpujch-Aranda CM, Chapela IB, Zavala EP, Guevara DM, Checchi F, Garcia E, Hugonnet S, Roth C, WHO Rapid Pandemic Assessment Collaboration: **Pandemic potential of a strain of influenza A (H1N1): early findings.** *Science (New York, NY)* 2009, **324**(5934):1557-1561.
62. White LF, Pagano M: **Reporting errors in infectious disease outbreaks, with an application to Pandemic Influenza A/H1N1.** *Epidemiologic perspectives & innovations : EP+I* 2010, **7**:12.
63. Chowell G, Echevarria-Zuno S, Viboud C, Simonsen L, Tamerius J, Miller MA, Borja-Aburto VH: **Characterizing the epidemiology of the 2009 influenza A/H1N1 pandemic in Mexico.** *PLoS Med* 2011, **8**(5):e1000436.
64. Pourbohloul B, Ahued A, Davoudi B, Meza R, Meyers LA, Skowronski DM, Villaseñor I, Galvan F, Cravioto P, Earn DJ, Dushoff J, Fisman D, Edmunds WJ, Hupert N, Scarpino SV, Trujillo J, Lutzow M, Morales J, Contreras A, Chávez C, Patrick DM, Brunham RC: **Initial human transmission dynamics of the pandemic (H1N1) 2009 virus in North America.** *Influenza Other Respi Viruses* 2009, **3**(5):215-222.
65. Boelle PY, Bernillon P, Desenclos JC: **A preliminary estimation of the reproduction ratio for new influenza A(H1N1) from the outbreak in Mexico, March-April 2009.** *Euro Surveill* 2009, **14**(19).
66. Balcan D, Hu H, Goncalves B, Bajardi P, Poletto C, Ramasco JJ, Paolotti D, Perra N, Tizzoni M, Van den Broeck W, Colizza V, Vespignani A: **Seasonal transmission potential and activity peaks of the new influenza A(H1N1): a Monte Carlo likelihood analysis based on human mobility.** *BMC medicine* 2009, **7**:45.
67. Cruz-Pacheco G, Duran L, Esteve L, Minzoni A, Lopez-Cervantes M, Panayotaras P, Ahued Ortega A, Villaseñor Ruiz I: **Modelling of the influenza A(H1N1)v outbreak in Mexico City, April-May 2009, with control sanitary measures.** *Euro Surveill* 2009, **14**(26).
68. Barakat A, Iahmad H, El Falaki F, Tempia S, Cherkaoui I, El Aouad R: **Pandemic influenza A virus subtype H1N1 in Morocco, 2009-2010: epidemiology, transmissibility, and factors associated with fatal cases.** *J Infect Dis* 2009, **2012**(206 Suppl 1):S94-S100.
69. Hahne S, Donker T, Meijer A, Timen A, van Steenbergen J, Osterhaus A, van der Sande M, Koopmans M, Wallinga J, Coutinho R, Dutch New Influenza A (H1N1)v Investigation Team: **Epidemiology and control of influenza A (H1N1)v in the Netherlands: the first 115 cases.** *Euro Surveill* 2009, **14**(27).
70. Roberts MG, Nishiura H: **Early estimation of the reproduction number in the presence of imported cases: pandemic influenza H1N1-2009 in New Zealand.** *PLoS One* 2011, **6**(5):e17835.
71. Nishiura H, Wilson N, Baker MG: **Estimating the reproduction number of the novel influenza A virus (H1N1) in a Southern Hemisphere setting: preliminary estimate in New Zealand.** *The New Zealand medical journal* 2009, **122**(1299):73-77.
72. Paine S, Mercer GN, Kelly PM, Bandaranayake D, Baker MG, Huang QS, Mackereth G, Bissielo A, Glass K, Hope V: **Transmissibility of 2009 pandemic influenza A(H1N1) in New Zealand: effective reproduction number and influence of age, ethnicity and importations.** *Euro Surveill* 2010, **15**(24).
73. Lessler J, dos Santos T, Aguilera X, Brookmeyer R, Group PITW, Cummings DA: **H1N1pdm in the Americas.** *Epidemics* 2010, **2**(3):132-138.
74. Munayco CV, Gomez J, Laguna-Torres VA, Arrasco J, Kochel TJ, Fiestas V, Garcia J, Perez J, Torres I, Condori F, Nishiura H, Chowell G: **and transmissibility analysis of influenza A(H1N1)v in a southern hemisphere setting: Peru** *Euro Surveill* 2009, **14**(32).
75. Chowell G, Viboud C, Munayco CV, Gomez J, Simonsen L, Miller MA, Tamerius J, Fiestas V, Halsey ES, Laguna-Torres VA: **Spatial and temporal characteristics of the 2009 A/H1N1 influenza pandemic in Peru.** *PLoS One* 2011, **6**(6):e21287.
76. Chan PP, Subramony H, Lai FY, Tien WS, Tan BH, Solhan S, Han HK, Foong BH, James L, Ooi PL: **Outbreak of novel influenza A (H1N1-2009) linked to a dance club.** *Ann Acad Med Singap* 2010, **39**(4):299-294.
77. Lee VJ, Yap J, Cook AR, Chen MI, Tay JK, Tan BH, Loh JP, Chew SW, Koh WH, Lin R, Cui L, Lee CW, Sung WK, Wong CW, Hibberd ML, Kang WL, Seet B, Tambyah PA: **Oseltamivir ring prophylaxis for containment of 2009 H1N1 influenza outbreaks.** *N Engl J Med* 2010, **362**(23):2166-2174.
78. Archer BN, Tempia S, White LF, Pagano M, Cohen C: **Reproductive number and serial interval of the first wave of influenza A(H1N1)pdm09 virus in South Africa.** *PLoS One* 2012, **7**(11):e49482.
79. Hsieh YH: **Pandemic influenza A (H1N1) during winter influenza season in the southern hemisphere.** *Influenza Other Respi Viruses* 2010, **4**(4):187-197.
80. Opatowski L, Fraser C, Griffin J, de Silva E, Van Kerkhove MD, Lyons EJ, Cauchemez S, Ferguson NM: **Transmission characteristics of the 2009 H1N1 influenza pandemic: comparison of 8 Southern hemisphere countries.** *PLoS Pathog* 2011, **7**(9):e1002225.
81. Hsieh YH, Cheng KF, Wu TN, Li TC, Chen CY, Chen JH, Lin MH, Center for Infectious E, Research T: **Transmissibility and temporal changes of 2009 pH1N1 pandemic during summer and fall/winter waves.** *BMC Infect Dis* 2011, **11**:332.

82. Chao DY, Cheng KF, Li TC, Wu TN, Chen CY, Tsai CA, Chen JH, Chiu HT, Lu JJ, Su MC, Liao YH, Chan WC, Hsieh YH: **Serological evidence of subclinical transmission of the 2009 pandemic H1N1 influenza virus outside of Mexico.** *PLoS One* 2011, **6**(1):e14555.
83. de Silva UC, Warachit J, Waicharoen S, Chittaganpitch M: **A preliminary analysis of the epidemiology of influenza A(H1N1)v virus infection in Thailand from early outbreak data, June-July 2009.** *Euro Surveill* 2009, **14**(31).
84. Hens N, Calatayud L, Kurkela S, Tamme T, Wallinga J: **Robust reconstruction and analysis of outbreak data: influenza A(H1N1)v transmission in a school-based population.** *Am J Epidemiol* 2012, **176**(3):196–203.
85. Ghani A, Baguelin M, Griffin J, Flasche S, van Hoek AJ, Cauchemez S, Donnelly C, Robertson C, White M, Truscott J, Fraser C, Garske T, White P, Leach S, Hall I, Jenkins H, Ferguson N, Cooper B: **The early transmission dynamics of H1N1pdm influenza in the United Kingdom.** *PLoS currents* 2009, **1**, RRN1130.
86. White LF, Wallinga J, Finelli L, Reed C, Riley S, Lipsitch M, Pagano M: **Estimation of the reproductive number and the serial interval in early phase of the 2009 influenza A/H1N1 pandemic in the USA.** *Influenza Other Respi Viruses* 2009, **3**(6):267–276.
87. Lessler J, Reich NG, Cummings DA, New York City Department of H, Mental Hygiene Swine Influenza Investigation T, Nair HP, Jordan HT, Thompson N: **Outbreak of 2009 pandemic influenza A (H1N1) at a New York City school.** *N Engl J Med* 2009, **361**(27):2628–2636.
88. Sugimoto JD, Borse NN, Ta ML, Stockman LJ, Fischer GE, Yang Y, Halloran ME, Longini IM Jr, Duchin JS: **The effect of age on transmission of 2009 pandemic influenza A (H1N1) in a camp and associated households.** *Epidemiology (Cambridge, Mass)* 2011, **22**(2):180–187.
89. Hien TT, Boni MF, Bryant JE, Ngan TT, Wolbers M, Nguyen TD, Truong NT, Dung NT, Ha do Q, Hien VM, Thanh TT, le NT N, le TT U, Nhien PT, Chinh NT, Chau NV, Farrar J, van Doorn HR: **Early pandemic influenza (2009 H1N1) in Ho Chi Minh City, Vietnam: a clinical virological and epidemiological analysis.** *PLoS Med* 2010, **7**(5):e1000277.
90. Hens N, Van Ranst M, Aerts M, Robeyns E, Van Damme P, Beutels P: **Estimating the effective reproduction number for pandemic influenza from notification data made publicly available in real time: a multi-country analysis for influenza A/H1N1v 2009.** *Vaccine* 2011, **29**(5):896–904.
91. Tang S, Xiao Y, Yuan L, Cheke RA, Wu J: **Campus quarantine (Fengxiao) for curbing emergent infectious diseases: lessons from mitigating A/H1N1 in Xi'an, China.** *J Theor Biol* 2012, **295**:47–58.
92. Tang S, Xiao Y, Yang Y, Zhou Y, Wu J, Ma Z: **Community-based measures for mitigating the 2009 H1N1 pandemic in China.** *PLoS One* 2010, **5**(6):e10911.
93. Trichereau J, Verret C, Mayet A, Manet G, Decam C, Meynard JB, Deparis X, Migliani R: **Estimation of the reproductive number for A(H1N1)pdm09 influenza among the French armed forces, September 2009-March 2010.** *The Journal of infection* 2012, **64**(6):628–630.
94. Haghdoost A, Baneshi MR, Zolala F, Farvahari S, Safizadeh H: **Estimation of basic reproductive number of Flu-like syndrome in a primary school in Iran.** *International journal of preventive medicine* 2012, **3**(6):408–413.
95. Poletti P, Ajelli M, Merler S: **The effect of risk perception on the 2009 H1N1 pandemic influenza dynamics.** *PLoS One* 2011, **6**(2):e16460.
96. Tsukui S: **Case-Based Surveillance of Pandemic (H1N1) 2009 in Maebashi City, Japan.** *Jpn J Infect Dis* 2012, **65**(2):132–137.
97. Renault P, D'Ortenzio E, Kermarec F, Filleul L: **Pandemic influenza 2009 on reunion island: a mild wave linked to a low reproduction number.** *PLoS currents* 2010, **2**, RRN1145.
98. Baguelin M, Hoek AJ, Jit M, Flasche S, White PJ, Edmunds WJ: **Vaccination against pandemic influenza A/H1N1v in England: a real-time economic evaluation.** *Vaccine* 2010, **28**(12):2370–2384.
99. Glass K, Kelly H, Mercer GN: **Pandemic influenza H1N1: reconciling serosurvey data with estimates of the reproduction number.** *Epidemiology (Cambridge, Mass)* 2012, **23**(1):86–94.
100. Van Kerkhove MD, Mounts AW, Mall S, Vandemaële KA, Chamberland M, dos Santos T, Fitzner J, Widdowson MA, Michalove J, Bresee J, et al: **Epidemiologic and virologic assessment of the 2009 influenza A (H1N1) pandemic on selected temperate countries in the Southern Hemisphere: Argentina, Australia, Chile, New Zealand and South Africa.** *Influenza Other Respi Viruses* 2011, **5**(6):e487–e498.
101. Valleron AJ, Cori A, Valtat S, Meurisse S, Carrat F, Boelle PY: **Transmissibility and geographic spread of the 1889 influenza pandemic.** *Proc Natl Acad Sci U S A* 2010, **107**(19):8778–8781.
102. Spicer CC: **The mathematical modelling of influenza epidemics.** *Br Med Bull* 1979, **35**(1):23–28.
103. Chowell G, Miller MA, Viboud C: **Seasonal influenza in the United States, France, and Australia: transmission and prospects for control.** *Epidemiol Infect* 2008, **136**(6):852–864.
104. Gran JM, Iversen B, Hungnes O, Aalen OO: **Estimating influenza-related excess mortality and reproduction numbers for seasonal influenza in Norway, 1975–2004.** *Epidemiol Infect* 2010, **138**(11):1559–1568.
105. Britton T, Becker NG: **Estimating the immunity coverage required to prevent epidemics in a community of households.** *Biostatistics (Oxford, England)* 2000, **1**(4):389–402.
106. Wearing HJ, Rohani P, Keeling MJ: **Appropriate models for the management of infectious diseases.** *PLoS Med* 2005, **2**(7):e174.
107. Flahault A, Letrait S, Blin P, Hazout S, Menares J, Valleron AJ: **Modelling the 1985 influenza epidemic in France.** *Stat Med* 1988, **7**(11):1147–1155.
108. Truscott J, Fraser C, Hinsley W, Cauchemez S, Donnelly C, Ghani A, Ferguson N, Meeyai A: **Quantifying the transmissibility of human influenza and its seasonal variation in temperate regions.** *PLoS currents* 2009, **1**, RRN1125.
109. Truscott J, Fraser C, Cauchemez S, Meeyai A, Hinsley W, Donnelly CA, Ghani A, Ferguson N: **Essential epidemiological mechanisms underpinning the transmission dynamics of seasonal influenza.** *Journal of the Royal Society, Interface / the Royal Society* 2012, **9**(67):304–312.
110. Cauchemez S, Valleron AJ, Boelle PY, Flahault A, Ferguson NM: **Estimating the impact of school closure on influenza transmission from Sentinel data.** *Nature* 2008, **452**(7188):750–754.
111. Chowell G, Viboud C, Simonsen L, Miller M, Alonso WJ: **The reproduction number of seasonal influenza epidemics in Brazil, 1996–2006.** *Proc Biol Sci* 2010, **277**(1689):1857–1866.
112. Barnea O, Yaari R, Katriel G, Stone L: **Modelling seasonal influenza in Israel.** *Mathematical biosciences and engineering : MBE* 2011, **8**(2):561–573.
113. Cintron-Arias A, Castillo-Chavez C, Bettencourt LM, Lloyd AL, Banks HT: **The estimation of the effective reproductive number from disease outbreak data.** *Mathematical biosciences and engineering : MBE* 2009, **6**(2):261–282.
114. Huppert A, Barnea O, Katriel G, Yaari R, Roll U, Stone L: **Modeling and statistical analysis of the spatio-temporal patterns of seasonal influenza in Israel.** *PLoS One* 2012, **7**(10):e45107.
115. Chen SC, Liao CM: **Probabilistic indoor transmission modeling for influenza (sub)type viruses.** *The Journal of infection* 2010, **60**(1):26–35.
116. Lunelli A, Rizzo C, Puzelli S, Bella A, Montomoli E, Rota MC, Donatelli I, Pugliese A: **Understanding the dynamics of seasonal influenza in Italy: incidence, transmissibility and population susceptibility in a 9-year period.** *Influenza Other Respi Viruses* 2013, **7**(2):286–295.
117. Smieszek T, Balmer M, Hattendorf J, Axhausen KW, Zinsstag J, Scholz RW: **Reconstructing the 2003/2004 H3N2 influenza epidemic in Switzerland with a spatially explicit, individual-based model.** *BMC Infect Dis* 2011, **11**:115.
118. Hsieh YH: **Age groups and spread of influenza: implications for vaccination strategy.** *BMC Infect Dis* 2010, **10**:106.
119. Bettencourt LM, Ribeiro RM: **Real time bayesian estimation of the epidemic potential of emerging infectious diseases.** *PLoS One* 2008, **3**(5):e2185.
120. Borja-Aburto VH, Chowell G, Viboud C, Simonsen L, Miller MA, Grajales-Muniz C, Gonzalez-Bonilla CR, Diaz-Quinonez JA, Echevarria-Zuno S: **Epidemiological characterization of a fourth wave of pandemic A/H1N1 influenza in Mexico, winter 2011–2012: age shift and severity.** *Arch Med Res* 2012, **43**(7):563–570.
121. Chowell G, Echevarria-Zuno S, Viboud C, Simonsen L, Grajales Muniz C, Rascon Pacheco RA, Gonzalez Leon M, Borja Aburto VH: **Recrudescence wave of pandemic A/H1N1 influenza in Mexico, winter 2011–2012: Age shift and severity.** *PLoS currents* 2012, **4**, RRN1306.
122. Lessler J, Cummings DA, Fishman S, Vora A, Burke DS: **Transmissibility of swine flu at Fort Dix, 1976.** *Journal of the Royal Society, Interface / the Royal Society* 2007, **4**(15):755–762.
123. Yang Y, Halloran ME, Sugimoto JD, Longini IM Jr: **Detecting human-to-human transmission of avian influenza A (H5N1).** *Emerg Infect Dis* 2007, **13**(9):1348–1353.
124. Aditama TY, Samaan G, Kusriastuti R, Sampurno OD, Purba W, Misriyah, Santoso H, Bratasena A, Maruf A, Sariwati E, Setiawaty V, Glass K, Lokuge K,

- Kelly PM, Kandun IN: **Avian influenza H5N1 transmission in households, Indonesia.** *PLoS One* 2012, **7**(1):e29971.
125. Frost WH: **The epidemiology of influenza.** *J Am Med Assoc* 1919, **73**(5):313–318.
 126. Shrestha SS, Swerdlow DL, Borse RH, Prabhu VS, Finelli L, Atkins CY, Owusu-Edusei K, Bell B, Mead PS, Biggerstaff M, Brammer L, Davidson H, Jernigan D, Jhung MA, Kamimoto LA, Merlin TL, Nowell M, Redd SC, Reed C, Schuchat A, Meltzer MI: **Estimating the burden of 2009 pandemic influenza A (H1N1) in the United States (April 2009–April 2010).** *Clin Infect Dis* 2011, **52**(Suppl 1):S75–S82.
 127. **Cumulative number of confirmed human cases of avian influenza A(H5N1) reported to WHO.** [http://www.who.int/influenza/human_animal_interface/EN_GIP_20130215CumulativeNumberH5N1cases.pdf]
 128. Mossong J, Hens N, Jit M, Beutels P, Auranen K, Mikolajczyk R, Massari M, Salmaso S, Tomba GS, Wallinga J, Heijne J, Sadkowska-Todys M, Rosinska M, Edmunds WJ: **Social contacts and mixing patterns relevant to the spread of infectious diseases.** *PLoS Med* 2008, **5**(3):e74.
 129. **The world factbook.** [https://www.cia.gov/library/publications/the-world-factbook/]
 130. Nishiura H, Chowell G, Castillo-Chavez C: **Did modeling overestimate the transmission potential of pandemic (H1N1-2009)? Sample size estimation for post-epidemic seroepidemiological studies.** *PLoS One* 2011, **6**(3):e17908.
 131. Shaman J, Kohn M: **Absolute humidity modulates influenza survival, transmission, and seasonality.** *Proc Natl Acad Sci U S A* 2009, **106**(9):3243–3248.
 132. Shaman J, Pitzer V, Viboud C, Lipsitch M, Grenfell B: **Absolute humidity and the seasonal onset of influenza in the continental US.** *PLoS currents* 2009, **2**, RRN1138.
 133. Influenza in a boarding school: **News and Notes.** *BMJ* 1978, **1**:587.

doi:10.1186/1471-2334-14-480

Cite this article as: Biggerstaff et al.: Estimates of the reproduction number for seasonal, pandemic, and zoonotic influenza: a systematic review of the literature. *BMC Infectious Diseases* 2014 **14**:480.

Submit your next manuscript to BioMed Central and take full advantage of:

- Convenient online submission
- Thorough peer review
- No space constraints or color figure charges
- Immediate publication on acceptance
- Inclusion in PubMed, CAS, Scopus and Google Scholar
- Research which is freely available for redistribution

Submit your manuscript at
www.biomedcentral.com/submit

