



**HAL**  
open science

## **Anthrax lethal toxin down-regulates type-IIA secreted phospholipase A(2) expression through MAPK/NF-kappaB inactivation.**

Benoit Raymond, Lucas Ravaux, Sylvie Mémet, Yongzheng Wu, Aude Sturny-Leclère, Dominique Leduc, Chantal Denoyelle, Pierre L. Goossens, Miguel Payá, Michel Raymondjean, et al.

### ► To cite this version:

Benoit Raymond, Lucas Ravaux, Sylvie Mémet, Yongzheng Wu, Aude Sturny-Leclère, et al.. Anthrax lethal toxin down-regulates type-IIA secreted phospholipase A(2) expression through MAPK/NF-kappaB inactivation.. *Biochemical Pharmacology*, 2010, 79 (8), pp.1149-55. 10.1016/j.bcp.2009.11.023 . pasteur-00512095

**HAL Id: pasteur-00512095**

**<https://pasteur.hal.science/pasteur-00512095>**

Submitted on 11 Jun 2020

**HAL** is a multi-disciplinary open access archive for the deposit and dissemination of scientific research documents, whether they are published or not. The documents may come from teaching and research institutions in France or abroad, or from public or private research centers.

L'archive ouverte pluridisciplinaire **HAL**, est destinée au dépôt et à la diffusion de documents scientifiques de niveau recherche, publiés ou non, émanant des établissements d'enseignement et de recherche français ou étrangers, des laboratoires publics ou privés.

## Accepted Manuscript

Title: Anthrax lethal toxin down-regulates type-IIA secreted phospholipase A<sub>2</sub> expression through MAPK/NF- $\kappa$ B inactivation

Authors: Benoit Raymond, Lucas Ravaux, Sylvie Mémet, YongZheng Wu, Aude Sturny-Leclère, Dominique Leduc, Chantal Denoyelle, Pierre L. Goossens, Miguel Payá, Michel Raymondjean, Lhousseine Touqui

PII: S0006-2952(09)01056-9  
DOI: doi:10.1016/j.bcp.2009.11.023  
Reference: BCP 10395

To appear in: *BCP*

Received date: 23-9-2009  
Revised date: 27-11-2009  
Accepted date: 30-11-2009

Please cite this article as: Raymond B, Ravaux L, Mémet S, Wu YZ, Sturny-Leclère A, Leduc D, Denoyelle C, Goossens PL, Payá M, Raymondjean M, Touqui L, Anthrax lethal toxin down-regulates type-IIA secreted phospholipase A<sub>2</sub> expression through MAPK/NF- $\kappa$ B inactivation, *Biochemical Pharmacology* (2008), doi:10.1016/j.bcp.2009.11.023

This is a PDF file of an unedited manuscript that has been accepted for publication. As a service to our customers we are providing this early version of the manuscript. The manuscript will undergo copyediting, typesetting, and review of the resulting proof before it is published in its final form. Please note that during the production process errors may be discovered which could affect the content, and all legal disclaimers that apply to the journal pertain.



**Anthrax lethal toxin down-regulates type-IIA secreted phospholipase A<sub>2</sub> expression through  
MAPK/NF- $\kappa$ B inactivation**

Benoit Raymond<sup>1,2</sup> \*, Lucas Ravaux<sup>3\*</sup>, Sylvie Mémet<sup>4,5</sup>, YongZheng Wu<sup>1,2</sup>, Aude Sturny-Leclère<sup>4,5</sup>,  
Dominique Leduc<sup>1,2</sup>, Chantal Denoyelle<sup>3</sup>, Pierre L. Goossens<sup>6,7</sup>, Miguel Payá<sup>8</sup>, Michel Raymondjean<sup>3</sup>  
and Lhousseine Touqui<sup>1,2</sup>

<sup>1</sup>Institut Pasteur, Unité de Défense Innée et Inflammation, Paris, <sup>2</sup>Inserm, U874, Paris; <sup>3</sup>Université  
Pierre et Marie Curie, UR4 Physiologie, Physiopathologie et Vieillessement, Paris; <sup>4</sup>Institut Pasteur,  
Unité de Mycologie Moléculaire, <sup>5</sup>CNRS URA3012, Paris; <sup>6,7</sup>Institut Pasteur, Unité des Toxines et  
Pathogénie Bactérienne, Paris, <sup>7</sup>CNRS, URA-2172, Paris, France; <sup>8</sup>Departamento de Farmacología,  
Universitat of València, España.

**\*BR and LR equally contributed to this work**

**Address correspondence:** L. Touqui, Unité de Défense Innée et Inflammation, Institut Pasteur, 25,  
rue Dr. Roux, 75015 Paris. Email address: touqui@pasteur.fr

**Abstract**

*Bacillus anthracis*, the etiological agent of anthrax, produces lethal toxin (LT) that displays a metallo-proteolytic activity toward the *N*-terminus of the MAPK-kinases. We have previously shown that secreted type-IIA phospholipase A<sub>2</sub> (sPLA<sub>2</sub>-IIA) exhibits potent anthracidal activity. *In vitro* expression of sPLA<sub>2</sub>-IIA in guinea pig alveolar macrophages (AMs), the major source of this enzyme in lung tissues, is inhibited by LT. Here, we examined the mechanisms involved in sPLA<sub>2</sub>-IIA inhibition by LT. We first showed that chemical inhibitors of p-38 and ERK MAPKs reduced PLA<sub>2</sub>-IIA expression in AMs indicating that these kinases play a role in PLA<sub>2</sub>-IIA expression. LT inhibited IL-1 $\beta$ -induced p-38 phosphorylation as well as sPLA<sub>2</sub>-IIA promoter activity in CHO cells. Inhibition of sPLA<sub>2</sub>-IIA promoter activity was mimicked by co-transfection with dominant negative construct of p38 (DN-p38) and reversed by the active form of p38 MAPK (AC-p38). Both LT and DN-p38 decreased IL-1 $\beta$ -induced NF- $\kappa$ B luciferase activity. This contrasted with the effect of AC-p38, which enhanced this activity. However, neither LT nor specific p-38 inhibitor interfered with LPS induced I $\kappa$ B $\alpha$  degradation or NF- $\kappa$ B nuclear translocation in AMs. Subcutaneous administration of LT to guinea pig before LPS challenge reduced sPLA<sub>2</sub>-IIA levels in broncho-alveolar lavages and ears. We conclude that sPLA<sub>2</sub>-IIA expression is induced via a sequential MAPK-NF- $\kappa$ B activation and that LT inhibits this expression likely by interfering with the transactivation of NF- $\kappa$ B in the nucleus. This inhibition, which is operating both *in vitro* and *in vivo*, may represent a mechanism by which *B. anthracis* subvert host defense.

## 1 2 **1. Introduction**

3  
4 Anthrax is primarily a disease of herbivores due to *Bacillus anthracis* infection, but humans are also  
5 susceptible (1). *B. anthracis*, the ethiological agent of anthrax disease, is a gram-positive, spore-  
6 forming bacterium. Although infection by this bacterium frequently occurs *via* the cutaneous route,  
7 both gastrointestinal and pulmonary infections cause the highest mortality in human. Macrophages  
8 and/or dendritic cells take up inhaled spores leading to their germination. This is followed by the  
9 migration of these cells to the draining lymph nodes (2). Encapsulated bacilli then enter the blood  
10 compartment and disseminate in the whole organism. Despite appropriate therapy, all these forms of  
11 infection may progress to fatal systemic anthrax, leading to shock-like symptoms and respiratory  
12 failure (3).  
13

14  
15 Studies have suggested that type-IIA secreted phospholipase A<sub>2</sub> (sPLA<sub>2</sub>-IIA) may represent an effector  
16 involved in host defense against invading bacteria. Indeed, sPLA<sub>2</sub>-IIA is a highly bactericidal enzyme,  
17 especially toward Gram positive bacteria (4-6) and is found at high levels in airways of humans (7,8)  
18 and various animal species (9-11). sPLA<sub>2</sub>-IIA belongs to a family of enzymes that catalyzes the  
19 hydrolysis of phospholipids leading to the generation of lysophospholipids and free fatty acids (12).  
20 We have recently shown that sPLA<sub>2</sub>-IIA is highly bactericidal towards *B. anthracis* (13) and protects  
21 infected mice against *B. anthracis* infection (14). These findings suggest that sPLA<sub>2</sub>-IIA may represent  
22 an efficient weapon participating in host defense against anthrax.  
23

24  
25 However, a number of studies have reported the ability of *B. anthracis* to subvert immune response  
26 (15-18). This inhibition mainly results from the action of specific *B. anthracis* toxins. Indeed, *B.*  
27 *anthracis* carry two plasmids, pXO1 (19) and pXO2 (20), which encode the primary virulence factors:  
28 lethal and edema toxins, and the proteins required for capsule synthesis, respectively. The toxins are  
29 composed of three secreted proteins: protective antigen (PA), lethal factor (LF) and edema factor (EF).  
30 These proteins act in pairs (21) leading to the lethal toxin (LT) and the edema toxin (ET), composed of  
31 the association of LF/PA and EF/PA respectively. Uptake of LT by the target cells is followed by the  
32 release of LF within the cytoplasm of these cells. There, LT displays its metallo-proteolytic activity  
33 toward the *N*-terminus of the MAPK-kinase (MAPKK), thereby interfering with the MAPK pathway  
34  
35  
36  
37  
38  
39  
40  
41  
42  
43  
44  
45  
46  
47  
48  
49  
50  
51  
52  
53  
54  
55  
56  
57  
58  
59  
60  
61  
62  
63  
64  
65

(22). We have recently reported that LT was able to inhibit sPLA<sub>2</sub>-IIA expression by guinea pig AM (13), the main source of pulmonary sPLA<sub>2</sub>-IIA in guinea pig (9). However, the mechanisms involved in this inhibition have not been examined. The present study has been addressed to identify the signaling pathways involved in this modulation and whether LT is able to interfere with sPLA<sub>2</sub>-IIA production *in vivo*.

## 2. Materials and Methods

### 2.1. Animals and reagents

Male Hartley guinea pigs were purchased from Charles River Laboratories (L'Arbresle, France). RPMI 1640 cell culture medium was obtained from Invitrogen (Cergy-Pontoise, France) and Fetal calf serum (FCS) from Hyclone (Logan, USA). Chinese hamster ovary (CHO) cells were purchased from ATCC (Manassas, USA). SB 203580 and PD 98059 were purchased from Biomol (Le Perray-en-Yvelines, France). MG-132 and *Pseudomonas aeruginosa* LPS were purchased from Sigma Aldrich (St. Louis, MO, USA). Antibodies directed against, I $\kappa$ B- $\alpha$  (sc-371), MEK-3 (sc-959) and  $\beta$ -actin (sc-81178) were from Santa Cruz Biotechnology (Santa Cruz, USA). Antibodies directed against p38-MAPK (9212), phospho-p38-MAPK (p38pT180-Y182, 9211), ERK (9102) and phospho-ERK (ERKpT202-Y204, 9101) were from Cell Signaling (Danvers, USA). Recombinant LF and PA from *B. anthracis* were purchased from List Biological Laboratory (Campbell, USA). Dominant negative and active form constructs of p38 MAPK are a gift of Dr. Jacques Pouyssegur (Institute of Developmental Biology and Cancer, CNRS, Nice, France).

### 2.2. Preparation of AMs and CHO cells and incubation procedures

Guinea pig broncho alveolar lavages (BALs) were performed with PBS and AMs were isolated as previously described (23). AMs, adjusted at  $2 \times 10^6$  cells/mL in RPMI 1640 with 3% FCS, were pretreated either with LT, MAPK inhibitors or NF- $\kappa$ B inhibitor 1 h before LPS stimulation. Chinese hamster ovary (CHO) adjusted at  $2 \times 10^4$  cells/ml (24-well plates) in HAM F12 with 10% FCS, 4 mM glutamine, 100 units/mL penicillin and 100 mg/ml streptomycin were incubated with LT for 1 h before

1 stimulation with IL-1 $\beta$ . After stimulation, media and cell lysis were collected for sPLA<sub>2</sub>-IIA activity,  
2 EMSA and western blot analyses were performed as described below.  
3

### 4 5 6 2.3. Assay of sPLA<sub>2</sub>-IIA activity 7

8 sPLA<sub>2</sub>-IIA activity was assayed using [<sup>3</sup>H]-oleic acid labeled membranes of *Escherichia coli*,  
9 following the method of Franson *et al.* (24) modified by Paya *et al.* (25). Briefly, the *E. coli* strain  
10 CECT 101 was seeded in medium containing 1% tryptone, 0.5% yeast extract, 0.5% NaCl and 0.6%  
11 sodium dihydrogen orthophosphate, pH 5.0 and grown for 6-8 h at 37 °C in the presence of 5  $\mu$ Ci/mL  
12 [<sup>3</sup>H]-oleic acid (specific activity 10 Ci/mmol) until growth approached the end of the logarithmic  
13 phase. After centrifugation at 1,800 x *g* for 10 min at 4 °C, the membranes were washed in buffer (0.7  
14 M Tris-HCl, 10 mM CaCl<sub>2</sub>, 0.1% bovine serum albumin, pH 8.0), re-suspended in saline and  
15 autoclaved for 30-45 min. The membranes were then washed, centrifuged again and frozen at -70 °C.  
16 At least, 95% of the radioactivity was incorporated into the phospholipid fraction.  
17

18 Aliquots (5-20  $\mu$ L) of AM supernatants, broncho alveolar lavage fluids (BALF) or ear homogenates  
19 were incubated with 250  $\mu$ L of buffer A (100 mM Tris-HCl, 1 mM CaCl<sub>2</sub>, pH 7.5), for 15 min 37 °C  
20 in the presence of 10  $\mu$ L autoclaved [<sup>3</sup>H]-oleic acid-labeled membranes. The reactions were stopped  
21 by addition of 100  $\mu$ L ice-cold stop solution (0.25% BSA in 100 mM Tris-HCl, 1 mM CaCl<sub>2</sub>, pH 7.5).  
22 After centrifugation at 1,800 x *g* for 10 min at 4 °C, the radioactivity in the supernatants was  
23 determined by liquid scintillation counting. BALF and ear homogenates were treated with the sPLA<sub>2</sub>-  
24 IIA inhibitor, LY311727 to check that hydrolysis is due to sPLA<sub>2</sub>-IIA activity. The latter was  
25 expressed as pmoles hydrolyzed substrate per min per mg ear homogenates or per ml BALF or AM  
26 supernatants.  
27

### 28 29 30 2.4. Nuclear protein extraction and Electrophoretic Mobility Shift Assays 31

32 Nuclear proteins were extracted from 2.10<sup>6</sup> AMs as previously described (26). The NF- $\kappa$ B double-  
33 stranded oligonucleotides (Santa Cruz Biotechnology, Santa Cruz, USA) consensus sequence 5'-AGT  
34 TGA GGG GAC TTTT CCC AGG C-3' was  $\gamma$ -<sup>32</sup>P-labeled with T4 polynucleotide kinase (New  
35  
36  
37  
38  
39  
40  
41  
42  
43  
44  
45  
46  
47  
48  
49  
50  
51  
52  
53  
54  
55  
56  
57  
58  
59  
60  
61  
62  
63  
64  
65

1  
2  
3  
4  
5  
6  
7  
8  
9  
10  
11  
12  
13  
14  
15  
16  
17  
18  
19  
20  
21  
22  
23  
24  
25  
26  
27  
28  
29  
30  
31  
32  
33  
34  
35  
36  
37  
38  
39  
40  
41  
42  
43  
44  
45  
46  
47  
48  
49  
50  
51  
52  
53  
54  
55  
56  
57  
58  
59  
60  
61  
62  
63  
64  
65

England Biolabs, Ipswich, USA) on the overhanging ends. Protein concentrations were determined by using Nanodrop spectrophotometer (Nyxor Biotech, Paris, France). Binding reactions were performed as follow: briefly, incubations were performed by adding 5  $\mu\text{g}$  of nuclear extract, 10  $\mu\text{L}$  of 2 X binding buffer (40 mM HEPES, pH 7, 140 mM KCl, 4 mM DTT, 0.02 % Nonidet P-40, 8% Ficoll, 200  $\mu\text{g}/\text{ml}$  BSA, 1  $\mu\text{g}$  of poly(dI:dC), and 1  $\mu\text{L}$  of  $\gamma$ - $^{32}\text{P}$ -labeled probe, in a total volume of 20  $\mu\text{L}$  for 20 min at room temperature. The reaction mixtures were separated on a 5% polyacrylamide gel in 0.5% Tris / borate / EDTA buffer at 150 V for 2 h. Gels were dried and exposed for 2 to 12 h. We have previously shown, using supershift analysis, that antibodies directed against NF- $\kappa\text{B}$ 's p50 and p65 subunits shift the NF- $\kappa\text{B}$  band in LPS-stimulated AMs, thus confirming that the observed complexes belong to the NF- $\kappa\text{B}$  family (27).

#### 2.5. Protein extraction and Western blot analyses

Proteins from AMs and CHO cells were extracted in lysis buffer (10 mM Tris-HCl, 150 mM NaCl, 3 mM EDTA, 100  $\mu\text{M}$  leupeptin, 100  $\mu\text{M}$  aprotinin, 1  $\mu\text{M}$  soybean trypsin inhibitor, 5 mM NEM, 1 mM PMSF, 5 mM benzamidine and 1% Triton X-100, pH 7.4) and electrophoresed under reducing conditions. Semidry transferred proteins were applied onto polyvinylidene difluoride membranes. Nonpecific binding sites were blocked overnight with 5% BSA in 20 mM Tris-HCl, pH 7.6, 140 mM NaCl and 0.1% Tween 20. Blots were probed for 1 h with indicated antibodies. After washing, the immunoreactive bands were visualized using the specifics peroxidase-conjugated anti-IgG and the ECL Plus Western Blotting Detecting System (Amersham Biosciences, Orsay, France).

#### 2.6. Plasmid constructions and transfection

CHO cells, adjusted at  $2 \times 10^4$  cells/ml (24-well plates) in HAM F12 with 10% FCS, 4 mM glutamine, 100 units/mL penicillin and 100 mg/ml streptomycin were transfected or cotransfected with the Ig- ( $\kappa\text{B}$ ) luciferase plasmid (28), [-1153; +46]-sPLA<sub>2</sub>-IIA luciferase plasmid (28), dominant negative construct of p-38 (DN-p38) or active form of p38 MAPK (AC-p38) using LIPOFECTAMINE™ Plus (Invitrogen, Carisbad, USA). After 24 h of transfection the cells were pretreated with LT (PA + LF) 1



1 h before LPS (1  $\mu\text{g}/\text{mL}$ ) or IL-1 $\beta$  (10  $\text{ng}/\text{mL}$ ) stimulation. 24 h after stimulation luciferase activity was determined in duplicate using a luciferase reporter assay kit (Promega, Madison, USA), with signal detection for 12 s by a luminometer (Berthold, Pforzheim, Germany), and normalized by dividing the relative light units by  $\beta$ -galactosidase activity.

### 2.7. *In vivo experiments*

Guinea pigs weighing 500-600 g were anesthetized by i.m. injection of ketamine hydrochloride (50 mg/kg body weight; Parke Davis, Courbevoie, France) and xylazine (2 mg/kg body weight; Bayer, Leverkusen, Germany). LT (PA + LF) and LPS were injected subcutaneously in each ear. A first injection (PA 10  $\mu\text{g}$  + LF 5  $\mu\text{g}$  in 20  $\mu\text{l}$  of sterile PBS) was administered 1 h before a second injection (PA 5  $\mu\text{g}$  + LF 2.5  $\mu\text{g}$  + 100  $\mu\text{g}$  of LPS in 20  $\mu\text{L}$  of sterile PBS). Control experiments were performed using PBS instead of LT. After overnight treatment with LPS the animals were euthanized with 40  $\mu\text{g}/\text{kg}$  pentobarbital sodium (Sanofi, Libourne, France) and broncho-alveolar lavages (BALs) and ear homogenates were performed as described below.

### 2.8 *Preparation of ear homogenates*

Guinea pigs were anesthetized and then 12 mm sections of ears were punched after euthanasia. Then, frozen tissues were suspended in 0.25 mM sucrose solution containing 10 mM Tris-HCl, pH 7.4, 1 mM EDTA, 0.5 mM PMSF, 2  $\mu\text{g}/\text{mL}$  leupeptin, and 2  $\mu\text{g}/\text{mL}$  aprotinin to yield a 10% (w/v) homogenate. The tissues were disrupted with a mixer Ultra-Turrax T-25 (Janke and Kunkel, Staufen, Germany) at 4  $^{\circ}\text{C}$  and then centrifuged for 5 min at 1,000  $\times g$ . The resulting supernatant was centrifuged at 20,000  $\times g$  for 20 min and supernatants were used for sPLA<sub>2</sub>-IIA activity analyses as described above.

### 2.9. *Control of cell viability*

Cell viability was checked by the trypan blue dye exclusion test. Cell lysis was controlled by measuring the release of lactate dehydrogenase activity using a commercial kit from Boehringer

1 (Mannheim, Germany). No changes of cell viability or lysis were observed in AMs or CHO cells after  
2 addition of LT or LPS.  
3  
4  
5

### 6 *2.10. Statistical analysis*

7

8 The results are presented as mean  $\pm$  SEM; and are represented of at least 3 independent experiments.  
9

10 The level of statistical significance was determined by two-way analysis of variance (ANOVA)  
11 followed by Dunnett's *t*-test for multiple comparisons.  
12  
13  
14  
15  
16  
17  
18  
19  
20  
21  
22  
23  
24  
25  
26  
27  
28  
29  
30  
31  
32  
33  
34  
35  
36  
37  
38  
39  
40  
41  
42  
43  
44  
45  
46  
47  
48  
49  
50  
51  
52  
53  
54  
55  
56  
57  
58  
59  
60  
61  
62  
63  
64  
65

### 3. Results

#### 3.1. A role for MAPK in the inhibition of sPLA<sub>2</sub>-IIA expression by LT

Our previous report showed that LT inhibited LPS-induced sPLA<sub>2</sub>-IIA synthesis by guinea pig AMs (13). LT was able to cleave MEK-3 in AMs (data not shown), which is in agreement with previous reports in various cell types (22). Thus, it is likely that inhibition of MAPK activation by LT may play a key role in the inhibition of sPLA<sub>2</sub>-IIA expression in AMs. We first examined the effect of known inhibitors of MAPK cascade on sPLA<sub>2</sub>-IIA production by AMs. Pre-incubation of AMs with PD 98059 and SB 203580 (respectively inhibitors of ERK and p38 MAPK), reduced LPS-induced sPLA<sub>2</sub>-IIA secretion (Fig. 1A and B) and inhibited LPS-induced phosphorylation of ERK or p38 MAPK (Fig. 1C and D) as expected. We also showed that LT inhibits LPS-induced p38 and ERK phosphorylations in AMs (Fig 1E and F).

We then investigated the impact of LT on the activation of sPLA<sub>2</sub>-IIA promoter construct transfected in CHO cells. Pretreatment of CHO cells with LT inhibited IL-1 $\beta$ -induced sPLA<sub>2</sub>-IIA promoter activity (Fig. 2A). Similar results were observed when the cells were stimulated with LPS instead of IL-1 $\beta$  (data not shown). Co-transfection of CHO cells with the dominant negative form of p38 (DN-p38) construct inhibited IL-1 $\beta$ -induced sPLA<sub>2</sub>-IIA promoter activity (Fig. 2B). In contrast, co-transfection with the active form of p38 MAPK (AC-p38) construct significantly increased sPLA<sub>2</sub>-IIA transcriptional activity and reversed the inhibitory effect of LT on this activity (Fig. 2C).

#### 3.2. Inhibition of NF- $\kappa$ B transactivation but not on its translocation by LT: implication of MAPK

Because NF- $\kappa$ B is known to play a pivotal role in the induction of sPLA<sub>2</sub>-IIA expression (29) we examined the effect of LT on NF- $\kappa$ B activation in AMs. Indeed, we have previously shown that MG-132 prevents LPS-induced NF- $\kappa$ B translocation as well as sPLA<sub>2</sub>-IIA expression in AMs (27). This compound is a proteasome inhibitor that prevents I $\kappa$ B $\alpha$  degradation which leads to inhibition of NF- $\kappa$ B translocation. EMSA analysis showed that LT failed to interfere with LPS-induced NF- $\kappa$ B nuclear translocation in

1  
2  
3  
4  
5  
6  
7  
8  
9  
10  
11  
12  
13  
14  
15  
16  
17  
18  
19  
20  
21  
22  
23  
24  
25  
26  
27  
28  
29  
30  
31  
32  
33  
34  
35  
36  
37  
38  
39  
40  
41  
42  
43  
44  
45  
46  
47  
48  
49  
50  
51  
52  
53  
54  
55  
56  
57  
58  
59  
60  
61  
62  
63  
64  
65

AMs (Fig. 3A). The use of the p38 MAPK inhibitor SB 203580 also failed to interfere with LPS-induced NF- $\kappa$ B translocation in AMs. Pretreatment of AMs with LPS induced a transient degradation of the NF- $\kappa$ B inhibitor I $\kappa$ B $\alpha$  (Fig. 3B). LPS-induced I $\kappa$ B $\alpha$  degradation was not altered neither by LT (Fig 3C) nor by SB 203580 (Fig 3D). As expected, this degradation was abolished by MG-132 (Fig. 3C).

We then examined the effect of LT on NF- $\kappa$ B activation using CHO cells. Pretreatment of CHO cells with LT abolished the IL-1 $\beta$ -induced p38-MAPK phosphorylation (Fig 4D). CHO cells were then transfected with Ig-( $\kappa$ B) luciferase plasmid followed by pre-incubation with LT 1 h before addition of IL-1 $\beta$ . As shown in Figure 4A, IL-1 $\beta$  induced a significant increase in luciferase activity, which was abrogated by LT. Similar results were observed when cells were stimulated with LPS (data not shown). Co-transfection of CHO cells with DN-p38 reduced IL-1 $\beta$ -induced NF- $\kappa$ B luciferase activity (Fig. 4B). In contrast, co-transfection with AC-p38 significantly increased this activity (Fig. 4C).

### 3.3. *In vivo* effects of LT on sPLA<sub>2</sub>-IIA production

These findings prompted us to examine whether the inhibitory effect of LT on sPLA<sub>2</sub>-IIA expression is operating *in vivo*. Guinea pigs received ear subcutaneous administration of LT before a second inoculation of both LT and LPS. Our results showed that LPS enhanced the levels of sPLA<sub>2</sub>-IIA activity, both in ears (Fig. 5B) and BALF (Fig. 5A). The levels of sPLA<sub>2</sub>-IIA activity were lowered either in BALF and ears in animals pretreated with LT before LPS instillation.

#### 4. Discussion

Our previous studies suggested that sPLA<sub>2</sub>-IIA, a component of lung innate immunity present in airways of human and various animal species, plays a role in host defense against *B. anthracis* (14). However, despite the ability of sPLA<sub>2</sub>-IIA to kill this bacterium, pulmonary anthrax has been shown to cause near 100% mortality. This suggests that *B. anthracis* probably affects sPLA<sub>2</sub>-IIA expression and/or activity in lung tissues. Our previous studies showed that LT was indeed able to inhibit sPLA<sub>2</sub>-IIA synthesis in AMs (13), the main pulmonary source of this enzyme in guinea pig (9), but the mechanisms involved in this inhibition have not been investigated. This inhibitory effect was not due to a cytotoxic action of LT, because guinea pig AMs were found to be resistant to the lethal effect of this toxin. Thus, guinea pig AMs belong to the group of macrophages that are resistant to the lytic action of LT, but responsive to its action, as detected by the cleavage of MEK-3 (data not shown) and inhibition of sPLA<sub>2</sub>-IIA production (13). The definition of resistance and susceptibility to LT relies on its ability to exert a lethal cytotoxic effect on certain types of cells from given species. However, the PA receptor has been observed on all cell types studied to date and it has been shown that these cells are sensitive to the modifications of the intracellular pathways induced by the enzymatic activity of LF. Thus, guinea pig AMs are indeed resistant to the lethal effect of LT, but are sensitive to the MAPKK pathway disruption triggered by LF. This suggests that cleavage of MAPKK by LT and subsequent alteration of MAPK cascade have not effect on cell viability on these cells.

LT is known to cleave MAPKK thereby interfering with the activation of p38 and ERK pathways (22). Our results clearly showed that both p38 and ERK (whose phosphorylations are inhibited by LT) play a role in the induction of sPLA<sub>2</sub>-IIA expression in AMs as specific inhibitors of these kinases significantly reduced sPLA<sub>2</sub>-IIA levels. This finding, *per se*, is of great interest, as it reveals an unrecognized role of these kinases in the modulation of sPLA<sub>2</sub>-IIA expression. Remarkably, our studies showed that LT inhibited sPLA<sub>2</sub>-IIA expression by interfering with p38 MAPK activation. We also demonstrated that this kinase mediates NF- $\kappa$ B activation, a major transcription factor involved in sPLA<sub>2</sub>-IIA expression in guinea pig AMs (29), and that this activation is abrogated by LT. Although

1 the mechanisms by which this kinase stimulates NF- $\kappa$ B activation in our cell system are still unclear,  
2 our findings indicated that this activation might not involve I $\kappa$ B $\alpha$  degradation or NF- $\kappa$ B nuclear  
3 translocation. It is thus likely that p38 MAPK induces NF- $\kappa$ B activation at a level located downstream  
4 nuclear translocation of this transcription factor. We hypothesize that p38 MAPK induces a nuclear  
5 transactivation of NF- $\kappa$ B through either a phosphorylation of NF- $\kappa$ B subunits or coactivators and that  
6 this process would lead to stimulation of sPLA<sub>2</sub>-IIA expression. In this model, the cleavage of  
7 MAPKK by LT would result in the inhibition of NF- $\kappa$ B activation ultimately leading to alteration of  
8 sPLA<sub>2</sub>-IIA expression. Our recent report showed that LT inhibit IL-8 expression in the pulmonary  
9 epithelial cells line Beas-2B in part by altering chromatin accessibility of IL-8 promoter to activated  
10 NF- $\kappa$ B without any effect on NF- $\kappa$ B activation (15). Whether LT inhibits sPLA<sub>2</sub>-IIA expression in  
11 AMs by a similar mechanism remains to be investigated. Recent reports showed that epigenetic  
12 mechanisms play a key role the modulation of sPLA<sub>2</sub>-IIA expression (30, 31).

13 To confer a pathophysiological relevance to these studies we examined the effect of LT instillation on  
14 the production of sPLA<sub>2</sub>-IIA *in vivo*. Our results showed that subcutaneous instillation of LPS in ears  
15 induced an increased production of sPLA<sub>2</sub>-IIA either in ear homogenates and BALF. We suggest that  
16 in this model LPS induces locally (in ear tissues) sPLA<sub>2</sub>-IIA expression the cell sources of which  
17 remains are still to be identified. In parallel, LPS may diffuse into lung tissues where it stimulates  
18 sPLA<sub>2</sub>-IIA by AMs, a major source of this enzyme in lungs (9). Moreover, a previous study showed  
19 that i.p. instillation of LPS induced an increased expression of pulmonary TNF $\alpha$  transcript, suggesting  
20 that LPS rapidly entered the blood stream and reached the competent cells within the lung tissues (32).  
21 Interestingly, our data revealed that LT instillation decreased the levels of sPLA<sub>2</sub>-IIA both in BALF  
22 and ears of LPS-challenged guinea pigs. Although the cell targets of LT in lung tissues have not been  
23 identified it is likely that LT target AMs leading to sPLA<sub>2</sub>-IIA inhibition.

24 It is clearly established now that i) sPLA<sub>2</sub>-IIA exhibits potent anthracidal properties (13), ii) this  
25 enzyme is present in airways at sufficient concentrations to kill *B. anthracis*, and iii) LT is synthesized  
26 shortly after germination of *B. anthracis* in the host. Thus, the control of sPLA<sub>2</sub>-IIA expression could  
27 represent an adaptive mechanism that allows *B. anthracis* to escape from the innate immune response.

1 Our previous report showed that the decrease in sPLA<sub>2</sub>-IIA levels was paralleled by a decrease in the  
2 anthracidal activity in LT-treated AMs (13). The present study identifies a mechanism by which *B.*  
3 *anthracis* might modulate sPLA<sub>2</sub>-IIA expression in AMs, thus opening a new therapeutic strategy for  
4 the treatment of this deadly infection.  
5  
6  
7  
8  
9  
10  
11  
12  
13  
14  
15  
16  
17  
18  
19  
20  
21  
22  
23  
24  
25  
26  
27  
28  
29  
30  
31  
32  
33  
34  
35  
36  
37  
38  
39  
40  
41  
42  
43  
44  
45  
46  
47  
48  
49  
50  
51  
52  
53  
54  
55  
56  
57  
58  
59  
60  
61  
62  
63  
64  
65

Accepted Manuscript

## 5. REFERENCES

- 1 [1] Mock M, Fouet A. Anthrax. *Annu Rev Microbiol* 2001;55:647-71.
- 2 [2] Lincoln RE, Hodges DR, Klein F, Mahlandt BG, Jones WI, Jr., Haines BW, et al. Role of the  
3 lymphatics in the pathogenesis of anthrax. *The Journal of infectious diseases* 1965;115:481-  
4 94.
- 5 [3] Turnbull PC. Anthrax vaccines: past, present and future. *Vaccine* 1991;9:533-9.
- 6 [4] Gronroos JO, Laine VJ, Nevalainen TJ. Bactericidal group IIA phospholipase A2 in serum of  
7 patients with bacterial infections. *The Journal of infectious diseases* 2002;185:1767-72.
- 8 [5] Weinrauch Y, Abad C, Liang NS, Lowry SF, Weiss J. Mobilization of potent plasma  
9 bactericidal activity during systemic bacterial challenge. Role of group IIA phospholipase A2.  
10 *The Journal of clinical investigation* 1998;102:633-8.
- 11 [6] Weinrauch Y, Elsbach P, Madsen LM, Foreman A, Weiss J. The potent anti-*Staphylococcus*  
12 *aureus* activity of a sterile rabbit inflammatory fluid is due to a 14-kD phospholipase A2. *The*  
13 *Journal of clinical investigation* 1996;97:250-7.
- 14 [7] Kim DK, Fukuda T, Thompson BT, Cockrill B, Hales C, Bonventre JV. Bronchoalveolar  
15 lavage fluid phospholipase A2 activities are increased in human adult respiratory distress  
16 syndrome. *The American journal of physiology* 1995;269:L109-18.
- 17 [8] Nakos G, Kitsioulis E, Hatzidaki E, Koulouras V, Touqui L, Lekka ME. Phospholipases A2  
18 and platelet-activating-factor acetylhydrolase in patients with acute respiratory distress  
19 syndrome. *Crit Care Med* 2005;33:772-9.
- 20 [9] Arbibe L, Vial D, Rosinski-Chupin I, Havet N, Huerre M, Vargaftig BB, et al. Endotoxin  
21 induces expression of type II phospholipase A2 in macrophages during acute lung injury in  
22 guinea pigs: involvement of TNF-alpha in lipopolysaccharide-induced type II phospholipase  
23 A2 synthesis. *J Immunol* 1997;159:391-400.
- 24 [10] Attalah HL, Wu Y, Alaoui-El-Azher M, Thouron F, Koumanov K, Wolf C, et al. Induction of  
25 type-IIA secretory phospholipase A2 in animal models of acute lung injury. *Eur Respir J*  
26 2003;21:1040-5.
- 27 [11] Furue S, Kuwabara K, Mikawa K, Nishina K, Shiga M, Maekawa N, et al. Crucial role of  
28 group IIA phospholipase A(2) in oleic acid-induced acute lung injury in rabbits. *Am J Respir*  
29 *Crit Care Med* 1999;160:1292-302.
- 30 [12] Touqui L, Alaoui-El-Azher M. Mammalian secreted phospholipases A2 and their  
31 pathophysiological significance in inflammatory diseases. *Current molecular medicine*  
32 2001;1:739-54.
- 33 [13] Gimenez AP, Wu YZ, Paya M, Delclaux C, Touqui L, Goossens PL. High bactericidal  
34 efficiency of type iia phospholipase A2 against *Bacillus anthracis* and inhibition of its  
35 secretion by the lethal toxin. *J Immunol* 2004;173:521-30.
- 36 [14] Piris-Gimenez A, Paya M, Lambeau G, Chignard M, Mock M, Touqui L, et al. In vivo  
37 protective role of human group Iia phospholipase A2 against experimental anthrax. *J Immunol*  
38 2005;175:6786-91.
- 39 [15] Raymond B, Batsche E, Boutillon F, Wu YZ, Leduc D, Balloy V, et al. Anthrax lethal toxin  
40 impairs IL-8 expression in epithelial cells through inhibition of histone H3 modification. *PLoS*  
41 *Pathog* 2009;5:e1000359.
- 42 [16] Raymond B, Leduc D, Ravoux L, Le Goffic R, Candela T, Raymondjean M, et al. Edema  
43 toxin impairs anthracidal phospholipase A2 expression by alveolar macrophages. *PLoS*  
44 *Pathog* 2007;3:e187.
- 45 [17] Baldari CT, Tonello F, Paccani SR, Montecucco C. Anthrax toxins: A paradigm of bacterial  
46 immune suppression. *Trends in immunology* 2006;27:434-40.
- 47 [18] Tournier JN, Quesnel-Hellmann A, Mathieu J, Montecucco C, Tang WJ, Mock M, et al.  
48 Anthrax edema toxin cooperates with lethal toxin to impair cytokine secretion during infection  
49 of dendritic cells. *J Immunol* 2005;174:4934-41.
- 50 [19] Mikesell P, Ivins BE, Ristroph JD, Dreier TM. Evidence for plasmid-mediated toxin  
51 production in *Bacillus anthracis*. *Infection and immunity* 1983;39:371-6.
- 52 [20] Green BD, Battisti L, Koehler TM, Thorne CB, Ivins BE. Demonstration of a capsule plasmid  
53 in *Bacillus anthracis*. *Infection and immunity* 1985;49:291-7.
- 54
- 55
- 56
- 57
- 58
- 59
- 60
- 61
- 62
- 63
- 64
- 65



- 1 [21] Mogridge J, Cunningham K, Lacy DB, Mourez M, Collier RJ. The lethal and edema factors of  
2 anthrax toxin bind only to oligomeric forms of the protective antigen. *Proceedings of the*  
3 *National Academy of Sciences of the United States of America* 2002;99:7045-8.
- 4 [22] Vitale G, Pellizzari R, Recchi C, Napolitani G, Mock M, Montecucco C. Anthrax lethal factor  
5 cleaves the N-terminus of MAPKKs and induces tyrosine/threonine phosphorylation of  
6 MAPKs in cultured macrophages. *Biochemical and biophysical research communications*  
7 1998;248:706-11.
- 8 [23] Hidi R, Vargaftig BB, Touqui L. Increased synthesis and secretion of a 14-kDa phospholipase  
9 A2 by guinea pig alveolar macrophages. Dissociation from arachidonic acid liberation and  
10 modulation by dexamethasone. *J Immunol* 1993;151:5613-23.
- 11 [24] Franson R, Patriarca P, Elsbach P. Phospholipid metabolism by phagocytic cells.  
12 Phospholipases A2 associated with rabbit polymorphonuclear leukocyte granules. *J Lipid Res*  
13 1974;15:380-8.
- 14 [25] Paya M, Terencio MC, Ferrandiz ML, Alcaraz MJ. Involvement of secretory phospholipase  
15 A2 activity in the zymosan rat air pouch model of inflammation. *Br J Pharmacol*  
16 1996;117:1773-9.
- 17 [26] Feuillard J, Memet S, Goudeau B, Lilienbaum A, Schmidt-Ullrich R, Raphael M, et al. In vivo  
18 identification of lymphocyte subsets exhibiting transcriptionally active NF-kappaB/Rel  
19 complexes. *Int Immunol* 2000;12:613-21.
- 20 [27] Wu YZ, Medjane S, Chabot S, Kubrusly FS, Raw I, Chignard M, et al. Surfactant protein-A  
21 and phosphatidylglycerol suppress type IIA phospholipase A2 synthesis via nuclear factor-  
22 kappaB. *Am J Respir Crit Care Med* 2003;168:692-9.
- 23 [28] Antonio V, Brouillet A, Janvier B, Monne C, Bereziat G, Andreani M, et al. Transcriptional  
24 regulation of the rat type IIA phospholipase A2 gene by cAMP and interleukin-1beta in  
25 vascular smooth muscle cells: interplay of the CCAAT/enhancer binding protein (C/EBP),  
26 nuclear factor-kappaB and Ets transcription factors. *The Biochemical journal* 2002;368:415-  
27 24.
- 28 [29] Alaoui-El-Azher M, Wu Y, Havet N, Israel A, Lilienbaum A, Touqui L. Arachidonic acid  
29 differentially affects basal and lipopolysaccharide-induced sPLA(2)-IIA expression in alveolar  
30 macrophages through NF-kappaB and PPAR-gamma-dependent pathways. *Molecular*  
31 *pharmacology* 2002;61:786-94.
- 32 [30] Menschikowski M, Hagelgans A, Gussakovsky E, Kostka H, Paley EL, Siegert G. Differential  
33 expression of secretory phospholipases A2 in normal and malignant prostate cell lines:  
34 regulation by cytokines, cell signaling pathways, and epigenetic mechanisms. *Neoplasia*  
35 2008;10:279-86.
- 36 [31] Menschikowski M, Hagelgans A, Kostka H, Eisenhofer G, Siegert G. Involvement of  
37 epigenetic mechanisms in the regulation of secreted phospholipase A2 expressions in Jurkat  
38 leukemia cells. *Neoplasia* 2008;10:1195-203.
- 39 [32] Lefort J, Singer M, Leduc D, Renesto P, Nahori MA, Huerre M, et al. Systemic administration  
40 of endotoxin induces bronchopulmonary hyperreactivity dissociated from TNF-alpha  
41 formation and neutrophil sequestration into the murine lungs. *J Immunol* 1998;161:474-80.
- 42  
43  
44  
45  
46  
47  
48  
49  
50  
51  
52  
53  
54  
55  
56  
57  
58  
59  
60  
61  
62  
63  
64  
65

## 6. Legends

### Figure 1: MAPK inhibition reduces sPLA<sub>2</sub>-IIA secretion by AMs

AMs were pretreated with (A) PD 98059 (100  $\mu$ M) or (B) SB 203580 (10  $\mu$ M) for 1 h, and then stimulated with LPS (50 ng/mL). After 24 h incubation, the levels of sPLA<sub>2</sub>-IIA was measured in the supernatants. In (C) and (D), AMs were incubated with PD 98059 (100  $\mu$ M) or SB 203580 (10  $\mu$ M) for 1 h and then stimulated with LPS (50 ng/mL) for 30 min. Erk and p-38 phosphorylations were analyzed by western blot. In E and F, AMs were pretreated for 1 h with LT (1  $\mu$ g/mL) and then stimulated with LPS (50 ng/ml) for 30 min. Erk (E) and p-38 (F) phosphorylations were analyzed by western blot.

### Figure 2: LT inhibits sPLA<sub>2</sub>-IIA expression in CHO cells

(A) CHO cells were transfected with the [-1153; +46]-sPLA<sub>2</sub>-IIA luciferase construct. The cells were pretreated for 1 h with LT (PA 1  $\mu$ g/mL + increasing concentrations of LF) and then stimulated with IL-1 $\beta$  (10 ng/ml). (B) Co-transfected cells with the [-1153; +46]-sPLA<sub>2</sub>IIA luciferase construct plus DN-p38 construct were stimulated with IL-1 $\beta$  (10 ng/ml). (C) Co-transfected cells with the [-1153; +46]-sPLA<sub>2</sub>IIA luciferae construct plus AC-p38 were pretreated for 1 h with LT (500 ng/ml) and then stimulated with IL-1 $\beta$  (10 ng/ml). Luciferase activity was measured 24 h after the addition of IL-1 $\beta$ .

### Figure 3: LT fails to affect NF- $\kappa$ B translocation in AMs

(A) AMs were pretreated for 1 h with LT (1  $\mu$ g/mL) and then stimulated with LPS (50 ng/ml) and EMSA were performed as indicated in *Material and Methods*. (B) AMs were stimulated with LPS (50 ng/ml) during the indicated times and I $\kappa$ B $\alpha$  levels analysed by Western blot. (C) AMs were pretreated with LT (PA 1  $\mu$ g/mL + increasing concentrations of LF) or MG-132 (1  $\mu$ M) 1 h before 30 min stimulation with LPS (50 ng/mL). (D) AMs were pretreated with SB 203580 (10  $\mu$ M) for 1 h and then stimulated with LPS (50 ng/mL) for 30 min. Cell extracts were subjected to I $\kappa$ B $\alpha$  analysis by western blot.

**Figure 4: LT alters NF- $\kappa$ B activation in CHO cells *via* MAPK-dependent process**

1  
2 (A) CHO were transfected with an NF- $\kappa$ B luciferase construct. Transfected cells were pretreated with  
3  
4 LT (PA 1  $\mu$ g/mL + indicated concentrations of LF) 1 h before IL-1 $\beta$  (10 ng/mL) stimulation. (B) Cells  
5  
6 co-transfected with the NF- $\kappa$ B luciferase plus DN-p38 (0.1-10 pg/mL) constructs were stimulated with  
7  
8 IL-1 $\beta$  (10 ng/mL). (C) Cells co-transfected with the NF- $\kappa$ B luciferase plus AC-p38 (0.1-10 pg/mL)  
9  
10 constructs were pretreated with LT (500 ng/mL) 1 h before IL-1 $\beta$  (10 ng/mL) stimulation. Luciferase  
11  
12 activity was measured 24 h after the addition of IL-1 $\beta$ . (D) Non transfected CHO cells were pretreated  
13  
14 with LT (1 $\mu$ g/mL) for 1 h and then stimulated with IL-1 $\beta$  (10 ng/mL) at the indicated time intervals.  
15  
16 p-38 phosphorylation was analyzed by western blot.  
17  
18  
19  
20  
21  
22

**Figure 5: LT reduces sPLA<sub>2</sub>-IIA activity in BALF and guinea pig ears**

23  
24 Guinea pigs received subcutaneous administration of LT (PA 10  $\mu$ g + LF 5  $\mu$ g) 1 h before a second  
25  
26 instillation of both LT (PA 5  $\mu$ g + LF 2.5  $\mu$ g) and LPS (100  $\mu$ g). 14 h later, sPLA<sub>2</sub>-IIA activity was  
27  
28 measured in BALF (A) and ears (B) as detailed in the Methods.  
29  
30  
31  
32  
33  
34  
35  
36  
37  
38  
39  
40  
41  
42  
43  
44  
45  
46  
47  
48  
49  
50  
51  
52  
53  
54  
55  
56  
57  
58  
59  
60  
61  
62  
63  
64  
65



# INSTITUT PASTEUR

---

## Unité de Défense Innée et Inflammation

INSERM U874

25-28, rue du Dr Roux

75724 Paris Cedex 15 – France

Tel : (33) 1-45 68 86 84

Paris, September 21, 2009

Dear Editor,

We are pleased to submit for publication in “Biochemical Pharmacology” a manuscript entitled “Anthrax lethal toxin down-regulates type-IIA secreted phospholipase A<sub>2</sub> expression through MAPK/NF- $\kappa$ B inactivation”.

This article identifies a mechanism by which Lethal Toxin, a major virulence factor of *B. anthracis*, the agent of Anthrax, inhibits the expression of type-IIA phospholipase A<sub>2</sub> and shows the importance of MAPK and NF- $\kappa$ B in this process. As type-IIA phospholipase A<sub>2</sub> is endowed with bactericidal activity its inhibition by Lethal Toxin may predispose the host to infection by this bacterium.

We hope that this work will be of interest for your Journal.

Best regards,

Dr. L. Touqui

**Anthrax lethal toxin down-regulates type-IIA secreted phospholipase A<sub>2</sub> expression through MAPK/NF- $\kappa$ B inactivation**

Benoit Raymond<sup>a\*</sup>, Lucas Ravaux<sup>b\*</sup>, Sylvie Memet<sup>c</sup>, Dominique Leduc<sup>a</sup>, Aude Sturn-Leclère<sup>c</sup>, YongZheng Wu<sup>a</sup>, Chantal Denoyelle<sup>b</sup>, Pierre L. Goossens<sup>d</sup>, Miguel Payá<sup>e</sup>, Michel Raymondjean<sup>b</sup> and Lhousseine Touqui<sup>a</sup>

<sup>a</sup>Unité de Défense Innée et Inflammation, Unité Inserm, U.874, Institut Pasteur, Paris; <sup>b</sup>UMR 7079 - Physiologie et Physiopathologie, Université Pierre et Marie Curie, CNRS, Paris; <sup>c</sup>Unité de recherche de Mycologie Moléculaire, Institut Pasteur, Paris; <sup>d</sup>Unité des Toxines et Pathogénie Bactérienne, CNRS, URA-2172, Institut Pasteur, Paris; <sup>e</sup>Departamento de Farmacología, Universitat of València, España

<sup>1</sup>Unité de Défense Innée et Inflammation, Unité Inserm, U.874, Institut Pasteur, Paris, France; <sup>2</sup>UMR 7079 - Physiologie et Physiopathologie, Université Pierre et Marie Curie, CNRS, Paris, France; <sup>3</sup> Unité de recherche de Mycologie Moléculaire, <sup>4</sup>Institut Pasteur, Paris; <sup>4</sup>Unité des Toxines et Pathogénie Bactérienne, CNRS, URA-2172, Paris, France. <sup>5</sup>Department of Pharmacology, University of Valencia, Valencia, Spain.

**\*BR and LR equally contributed to this work**

**Address correspondence:** L. Touqui, Unité de Défense Innée et Inflammation, Institut Pasteur, 25, rue Dr. Roux, 75015 Paris.

Email address: touqui@pasteur.fr

**Abstract**

*Bacillus anthracis*, the etiological agent of anthrax, produces lethal toxin (LT) that displays a metallo-proteolytic activity toward the *N*-terminus of the MAPK-kinases. We have previously shown that secreted type-IIA phospholipase A<sub>2</sub> (sPLA<sub>2</sub>-IIA) exhibits potent anthracidal activity. *In vitro* expression of sPLA<sub>2</sub>-IIA in guinea pig alveolar macrophages (AMs), the major source of this enzyme in lung tissues, is inhibited by LT. Here, we examined the mechanisms involved in sPLA<sub>2</sub>-IIA inhibition by LT. We first showed that chemical inhibitors of p-38 and ERK MAPKs reduced PLA<sub>2</sub>-IIA expression in AMs indicating that these kinases play a role in PLA<sub>2</sub>-IIA expression. Transfection studies using CHO cells showed that LT inhibited Il-1 $\beta$ -induced PLA<sub>2</sub>-IIA promoter activation. This effect was mimicked by co-transfection with dominant negative construct of p38 (DN-p38) and reversed by the active form of p38 MAPK (AC-p38). Both LT and DN-p38 decreased Il-1 $\beta$ -induced NF- $\kappa$ B luciferase activity. This contrasted with the effect of AC-p38, which enhanced this activity. However, LT failed to interfere with LPS induced I $\kappa$ B $\alpha$  degradation or NF- $\kappa$ B nuclear translocation in AMs. Finally, we showed that administration of LT to guinea pig reduced sPLA<sub>2</sub>-IIA levels in broncho-alveolar lavages, suggesting that LT is able to interfere with the *in vivo* sPLA<sub>2</sub>-IIA production. We conclude that sPLA<sub>2</sub>-IIA expression is induced via a sequential MAPK-NF- $\kappa$ B activation and that LT inhibits this expression likely by interfering with the transactivation of NF- $\kappa$ B in the nucleus. This inhibition, which is operating both *in vitro* and *in vivo*, may represent a mechanism by which *B. anthracis* subvert host defense.

## 1. Introduction

1  
2  
3  
4 Anthrax is primarily a disease of herbivores due to *Bacillus anthracis* infection, but humans  
5 are also susceptible (1). *B. anthracis*, the ethiological agent of anthrax disease, is a gram-  
6 positive, spore-forming bacterium. Although infection by this bacterium frequently occurs *via*  
7 the cutaneous or gastrointestinal route, pulmonary infection causes the highest mortality in  
8 human. Macrophages and/or dendritic cells take up inhaled spores leading to their  
9 germination. This is followed by the migration of these cells to the draining lymph nodes (2).  
10 Encapsulated bacilli then enter the blood compartment and disseminate in the whole  
11 organism. Despite appropriate therapy, all these forms of infection may progress to fatal  
12 systemic anthrax, leading to shock-like symptoms and respiratory failure (3).  
13  
14  
15  
16  
17  
18  
19  
20  
21  
22  
23  
24  
25

26 Studies have suggested that type-IIA secreted phospholipase A<sub>2</sub> (sPLA<sub>2</sub>-IIA) may represent  
27 an effector involved in host defense against invading bacteria. Indeed, sPLA<sub>2</sub>-IIA is a highly  
28 bactericidal enzyme, especially toward Gram positive bacteria (4-6) and is found at high  
29 levels in airways of humans (7,8) and various animal species (9-11). sPLA<sub>2</sub>-IIA belongs to a  
30 family of enzymes that catalyzes the hydrolysis of phospholipids leading to the generation of  
31 lysophospholipids and free fatty acids (12). We have recently shown that sPLA<sub>2</sub>-IIA is highly  
32 bactericidal towards *B. anthracis* (13) and protects infected mice against *B. anthracis*  
33 infection (14). These findings suggest that sPLA<sub>2</sub>-IIA may represent an efficient weapon  
34 participating in host defense against anthrax.  
35  
36  
37  
38  
39  
40  
41  
42  
43  
44  
45  
46  
47

48 However, a number of studies have reported the ability of *B. anthracis* to subvert immune  
49 response (15-18). This inhibition mainly results from the action of specific *B. anthracis*  
50 toxins. Indeed, *B. anthracis* carry two plasmids, pXO1 (19) and pXO2 (20), which encode the  
51 primary virulence factors: lethal and edema toxins, and the proteins required for capsule  
52 synthesis, respectively. The toxins are composed of three secreted proteins: protective antigen  
53  
54  
55  
56  
57  
58  
59  
60  
61  
62  
63  
64  
65

1 (PA), lethal factor (LF) and edema factor (EF). These proteins act in pairs (21) leading to the  
2 lethal toxin (LT) and the edema toxin (ET), compose of the association of LF/PA and EF/PA  
3 respectively. Uptake of LT by the target cells is followed by the release of LF within the  
4 cytoplasm of these cells. There, LT displays its metallo-proteolytic activity toward the *N*-  
5 terminus of the MAPK-kinase (MAPKK), thereby interfering with the MAPK pathway (22).  
6  
7 We have recently reported that LT was able to inhibit sPLA<sub>2</sub>-IIA expression by guinea pig  
8 AM (13), the main source of pulmonary sPLA<sub>2</sub>-IIA in guinea pig (10). However, the  
9 mechanisms involved in this inhibition have not been examined. The present study has been  
10 addressed to identify the signaling pathways involved in this modulation and whether LT is  
11 able to interfere with sPLA<sub>2</sub>-IIA production *in vivo*.  
12  
13  
14  
15  
16  
17  
18  
19  
20  
21  
22  
23  
24  
25  
26

## 27 **2. Materials and Methods**

### 28 *2.1. Animals and reagents*

29 Male Hartley guinea pigs were purchased from Charles River Laboratories. RPMI 1640 cell  
30 culture medium was obtained from Invitrogen (Cergy-Pontoise, France) and Fetal calf serum  
31 (FCS) from Hyclone (Logan, USA). SB 203580 and PD 98059 were purchased from Biomol  
32 (Le Perray-en-Yvelines, France). MG-132 and *Pseudomonas aeruginosa* LPS were purchased  
33 from Sigma Aldrich (St. Louis, MO, USA). Antibodies directed against, I $\kappa$ B $\alpha$  (sc-371) and  $\beta$ -  
34 actin (sc-81178) were from Santa Cruz Biotechnology (Santa Cruz, CA, USA). Recombinant  
35 LF and PA from *B. anthracis* were purchased from List Biological Laboratory (USA).  
36  
37  
38  
39  
40  
41  
42  
43  
44  
45  
46  
47  
48  
49  
50

### 51 *2.2. Preparation of AMs and incubation procedures*

52 Guinea pig broncho alveolar lavages (BALs) were performed with PBS and AMs were  
53 isolated as previously described (23). AMs, adjusted at  $2 \times 10^6$  cells/mL in RPMI 1640 with  
54 3% FCS, were pretreated either with LT, MAPK inhibitors or NF- $\kappa$ B inhibitor 1 h before LPS  
55  
56  
57  
58  
59  
60  
61  
62  
63  
64  
65



1 stimulation. After stimulation, media and cell lysis were collected for sPLA<sub>2</sub>-IIA activity,  
2 EMSA and western blot analyses were performed as described below.  
3  
4  
5  
6

### 7 2.3. Assay of sPLA<sub>2</sub>-IIA activity

8  
9 sPLA<sub>2</sub>-IIA activity was assayed using [<sup>3</sup>H]-oleic acid labeled membranes of *Escherichia coli*,  
10 following a modification of the method of (24) as modified by (25). Briefly, the *E. coli* strain  
11 CECT 101 was seeded in medium containing 1% tryptone, 0.5% yeast extract, 0.5% NaCl and  
12 0.6% sodium dihydrogen orthophosphate, pH 5.0 and grown for 6-8 h at 37 °C in the presence  
13 of 5 µCi/mL [<sup>3</sup>H]-oleic acid (specific activity 10 Ci/mmol) until growth approached the end of  
14 the logarithmic phase. After centrifugation at 1,800 x g for 10 min at 4 °C, the membranes  
15 were washed in buffer (0.7 M Tris-HCl, 10 mM CaCl<sub>2</sub>, 0.1% bovine serum albumin, pH 8.0),  
16 re-suspended in saline and autoclaved for 30-45 min. The membranes were then washed,  
17 centrifuged again and frozen at -70 °C. At least, 95% of the radioactivity was incorporated  
18 into the phospholipid fraction.  
19  
20  
21  
22  
23  
24  
25  
26  
27  
28  
29  
30  
31  
32

33 Aliquots (5-20 µL) of AM supernatants, broncho alveolar lavage fluids (BALF) or ear  
34 homogenates were incubated with 250 µL of buffer A (100 mM Tris-HCl, 1 mM CaCl<sub>2</sub>, pH  
35 7.5), for 15 min 37 °C in the presence of 10 µL autoclaved [<sup>3</sup>H]-oleic acid-labeled  
36 membranes. The reactions were stopped by addition of 100 µL ice-cold stop solution (0.25%  
37 BSA in 100 mM Tris-HCl, 1 mM CaCl<sub>2</sub>, pH 7.5). After centrifugation at 1,800 x g for 10 min  
38 at 4 °C, the radioactivity in the supernatants was determined by liquid scintillation counting.  
39 BALF and ear homogenates were treated with the sPLA<sub>2</sub>-IIA inhibitor, LY311727 to check  
40 that hydrolysis is due to sPLA<sub>2</sub>-IIA activity. The latter was expressed as pmoles hydrolyzed  
41 substrate per min per mg ear homogenates or per ml BALF or AM supernatants.  
42  
43  
44  
45  
46  
47  
48  
49  
50  
51  
52  
53  
54  
55  
56  
57  
58  
59  
60  
61  
62  
63  
64  
65

#### 2.4. Nuclear protein extraction and Electrophoretic Mobility Shift Assays

1  
2 Nuclear proteins were extracted from  $2.10^6$  AMs as previously described (26). The NF- $\kappa$ B  
3  
4 double-stranded oligonucleotides (Santa Cruz Biotechnology, Santa Cruz, CA) consensus  
5  
6 sequence 5'-AGT TGA GGG GAC TTTT CCC AGG C-3' was  $\gamma$ - $^{32}$ P-labeled with T4  
7  
8 polynucleotide kinase (Biolabs) on the overhanging ends. Protein concentrations were  
9  
10 determined by using Nanodrop spectrophotometer (Nyxor Biotech, Paris, France). Binding  
11  
12 reactions were performed as follow: briefly, incubations were performed by adding 5  $\mu$ g of  
13  
14 nuclear extract, 10  $\mu$ L of 2 X binding buffer (40 mM HEPES, pH 7, 140 mM KCl, 4 mM  
15  
16 DTT, 0.02 % Nonidet P-40, 8% Ficoll, 200  $\mu$ g/ml BSA, 1  $\mu$ g of poly(dI:dC)), and 1  $\mu$ L of  $\gamma$ -  
17  
18  $^{32}$ P-labeled probe, in a total volume of 20  $\mu$ L for 20 min at room temperature. The reaction  
19  
20 mixtures were separated on a 5% polyacrylamide gel in 0.5% Tris / borate / EDTA buffer at  
21  
22 150 V for 2 h. Gels were dried and exposed for 2 to 12 h. We have previously shown, using  
23  
24 supershift analysis, that antibodies directed against NF- $\kappa$ B's p50 and p65 subunits shift the  
25  
26 NF- $\kappa$ B band in LPS-stimulated AMs, thus confirming that the observed complexes belong to  
27  
28 the NF- $\kappa$ B family (27).  
29  
30  
31  
32  
33  
34  
35  
36  
37  
38  
39

#### 2.5. Protein extraction and Western blot analyses

40  
41 Proteins from AMs were extracted in lysis buffer (10 mM Tris-HCl, 150 mM NaCl, 3 mM  
42  
43 EDTA, 100  $\mu$ M leupeptin, 100  $\mu$ M aprotinin, 1  $\mu$ M soybean trypsin inhibitor, 5 mM NEM, 1  
44  
45 mM PMSF, 5 mM benzamidine and 1% Triton X-100, pH 7.4) and electrophoresed under  
46  
47 reducing conditions. Semidry transferred proteins were applied onto polyvinylidene difluoride  
48  
49 membranes. Nonpecific binding sites were blocked overnight with 5% BSA in 20 mM Tris-  
50  
51 HCl, pH 7.6, 140 mM NaCl and 0.1% Tween 20. Blots were probed for 1 h with anti-MEK3.  
52  
53  
54  
55  
56  
57 After washing, the immunoreactive bands were visualized using a peroxidase-conjugated,  
58  
59  
60  
61  
62  
63  
64  
65

1 goat anti-rabbit IgG (1/10,000 dilution) and an ECL Plus Western Blotting Detecting System  
2 (Amersham Biosciences, Orsay, France).  
3  
4  
5  
6

### 7 *2.6. Plasmid constructions and transfection*

8  
9 Chinese hamster ovary (CHO), adjusted at  $2 \times 10^4$  cells/ml (24-well plates) in HAM F12 with  
10 10% FCS, 4 mM glutamine, 100 units/mL penicillin and 100 mg/ml streptomycin were  
11 transfected or cotransfected with the Ig-( $\kappa$ B) luciferase plasmid (28), [-1153; +46]-sPLA<sub>2</sub>-IIA  
12 luciferase plasmid (28), dominant negative construct of p-38 (DN-p38) or active form of p38  
13 MAPK (AC-p38) using LIPOFECTAMINE™ Plus (Invitrogen). After 24 h of transfection  
14 the cells were pretreated with LT (PA + LF) 1 h before LPS (1  $\mu$ g/mL) or IL-1 $\beta$  (10 ng/mL)  
15 stimulation. 24 h after stimulation luciferase activity was determined in duplicate using a  
16 luciferase reporter assay kit (Promega), with signal detection for 12 s by a luminometer  
17 (Berthold, Pforzheim, Germany), and normalized by dividing the relative light units by  $\beta$ -  
18 galactosidase activity.  
19  
20  
21  
22  
23  
24  
25  
26  
27  
28  
29  
30  
31  
32  
33  
34  
35

### 36 *2.7. In vivo experiments*

37  
38 Guinea pigs weighing 500-600 g were anesthetized by i.m. injection of ketamine  
39 hydrochloride (50 mg/kg body weight; Parke Davis, Courbevoie, France) and xylazine (2  
40 mg/kg body weight; Bayer, Leverkusen, Germany). LT (PA + LF) and LPS were injected  
41 subcutaneously in each ear. A first injection (PA 10  $\mu$ g + LF 5  $\mu$ g in 20  $\mu$ l of sterile PBS) was  
42 administrated 1 h before a second injection (PA 5  $\mu$ g + LF 2.5  $\mu$ g + 100  $\mu$ g of LPS in 20  $\mu$ L  
43 of sterile PBS). Control experiments were performed using PBS instead of LT. After  
44 overnight treatment with LPS the animals were euthanized with pentobarbital sodium (40  
45  $\mu$ g/kg; Sanofi, Libourne, France) and broncho-alveolar lavages (BALs) and ear homogenates  
46 were performed as described below.  
47  
48  
49  
50  
51  
52  
53  
54  
55  
56  
57  
58  
59  
60  
61  
62  
63  
64  
65

### 2.8 Preparation of ear homogenates

12 mm sections of ears were punched after local anesthesia and homogenized. Briefly, frozen tissues were suspended in 0.25 mM sucrose solution containing 10 mM Tris-HCl, pH 7.4, 1 mM EDTA, 0.5 mM PMSF, 2  $\mu\text{g}/\text{mL}$  leupeptin, and 2  $\mu\text{g}/\text{mL}$  aprotinin to yield a 10% (w/v) homogenate. The tissues were disrupted with a mixer (Ultra-Turrax T-25, Janke and Kunkel, Staufen, Germany) at 4 °C and then centrifuged for 5 min at 1,000 x g. The resulting supernatant was centrifuged at 20,000 x g for 20 min and supernatants were used for sPLA<sub>2</sub>-IIA activity analyses as described above.

### 2.9. Control of cell viability

Cell viability was checked by the trypan blue dye exclusion test. Cell lysis was controlled by measuring the release of lactate dehydrogenase activity using a commercial kit from Boehringer (Mannheim, Germany). No changes of cell viability or lysis were observed in AMs or CHO cells after addition of LT or LPS.

### 2.10. Statistical analysis

The results are presented as mean  $\pm$  SEM; and are represented of at least 3 independent experiments. The level of statistical significance was determined by two-way analysis of variance (ANOVA) followed by Dunnett's *t*-test for multiple comparisons.

### 3. Results

#### 3.1. A role for MAPK in the inhibition of sPLA<sub>2</sub>-IIA expression by LT

Our previous report showed that LT inhibited LPS-induced sPLA<sub>2</sub>-IIA synthesis by guinea pig AMs (13). LT was able to cleave MEK-3 in AMs (data not shown), which is in agreement with previous reports in various cell types (22). Thus, it is likely that inhibition of MAPK activation by LT may play a key role in the inhibition of sPLA<sub>2</sub>-IIA expression in AMs. We first examined the effect of known inhibitors of MAPK cascade on sPLA<sub>2</sub>-IIA production by AMs. Pre-incubation of AM with PD 98059 and SB 203580, respectively inhibitors of ERK and p38 MAPK pathways, reduced LPS-induced sPLA<sub>2</sub>-IIA secretion (Fig. 1A and B).

We then investigated the impact of LT on the activation of sPLA<sub>2</sub>-IIA promoter construct transfected in CHO cells. Pretreatment of CHO cells with LT inhibited IL-1 $\beta$ -induced sPLA<sub>2</sub>-IIA promoter activity (Fig. 2A). Similar results were observed when the cells were stimulated with LPS instead of IL-1 $\beta$  (data not shown). Co-transfection of CHO cells with DN-p38 construct inhibited IL-1 $\beta$ -induced sPLA<sub>2</sub>-IIA promoter activity (Fig. 2B). In contrast, co-transfection with AC-p38 construct significantly increased sPLA<sub>2</sub>-IIA transcriptional activity and reversed the inhibitory effect of LT on this activity (Fig. 2C).

#### 3.2. Inhibition of NF- $\kappa$ B transactivation but not on its translocation by LT: implication of MAPK

Because NF- $\kappa$ B is known to play a pivotal role in the induction of sPLA<sub>2</sub>-IIA expression (29) we examined the effect of LT on NF- $\kappa$ B activation in AMs. EMSA analysis showed that LT failed to interfere with LPS-induced NF- $\kappa$ B nuclear translocation in AMs (Fig. 3A). The use of the p38 MAPK inhibitor SB 203580 also failed to interfere with LPS-induced NF- $\kappa$ B translocation in AMs. Pretreatment of AMs with LPS induced a transient degradation of I $\kappa$ B $\alpha$

1 (Fig. 3B). LPS-induced I $\kappa$ B $\alpha$  degradation was not altered by LT, whereas MG-132, a  
2 proteasome inhibitor, abolished LPS-induced I $\kappa$ B $\alpha$  degradation, as suspected (Fig. 3C).  
3

4 We then examined the effect of LT on NF- $\kappa$ B activation in transfected cells. CHO cells were  
5 transfected with Ig-( $\kappa$ B) luciferase plasmid followed by pre-incubation with LT 1 h before  
6 addition of IL-1 $\beta$ . As shown in Figure 4A, IL-1 $\beta$  induced a significant increase in luciferase  
7 activity, which was abrogated by LT. Similar results were observed when cells were  
8 stimulated with LPS (data not shown). Co-transfection of CHO cells with DN-p38 reduced  
9 IL-1 $\beta$ -induced NF- $\kappa$ B luciferase activity (Fig. 4B). In contrast, co-transfection with AC-p38  
10 significantly increased this activity (Fig. 4C).  
11  
12  
13  
14  
15  
16  
17  
18  
19  
20  
21  
22  
23  
24

### 25 3.3. *In vivo* effects of LT on sPLA<sub>2</sub>-IIA production

26 These findings prompted us to examine whether the inhibitory effect of LT on sPLA<sub>2</sub>-IIA  
27 expression is operating *in vivo*. Guinea pigs received ear subcutaneous administration of LT  
28 before a second instillation of both LT and LPS. Our results showed that LPS enhanced the  
29 levels of sPLA<sub>2</sub>-IIA activity, both in BALF (Fig. 5A) and ears (Fig. 5B). The levels of sPLA<sub>2</sub>-  
30 IIA activity were lowered either in BALF and ears in animals pretreated with LT before LPS  
31 instillation.  
32  
33  
34  
35  
36  
37  
38  
39  
40  
41  
42  
43  
44  
45  
46  
47  
48  
49  
50  
51  
52  
53  
54  
55  
56  
57  
58  
59  
60  
61  
62  
63  
64  
65

#### 4. Discussion

Our previous studies suggested that sPLA<sub>2</sub>-IIA, a component of lung innate immunity present in airways of human and various animal species, plays a role in host defense against *B. anthracis* (14). However, despite the ability of sPLA<sub>2</sub>-IIA to kill this bacterium, pulmonary anthrax has been shown to cause near 100% mortality. This suggests that *B. anthracis* probably affects sPLA<sub>2</sub>-IIA expression and/or activity in lung tissues. Our previous studies showed that LT was indeed able to inhibit sPLA<sub>2</sub>-IIA synthesis in AMs (13), the main pulmonary source of this enzyme in guinea pig (9), but the mechanisms involved in this inhibition have not been investigated. This inhibitory effect was not due to a cytotoxic action of LT, because guinea pig AMs were found to be resistant to the lethal effect of this toxin. Thus, guinea pig AMs belong to the group of macrophages that are resistant to the lytic action of LT, but responsive to its action, as detected by the cleavage of MEK-3 (data not shown) and inhibition of sPLA<sub>2</sub>-IIA production (13).

LT is known to cleave MAPKK thereby interfering with the activation of p38 and ERK pathways (22). Our results clearly showed that both p38 and ERK play a role in the induction of sPLA<sub>2</sub>-IIA expression in AMs as specific inhibitors of these kinases significantly reduced sPLA<sub>2</sub>-IIA levels. This finding, *per se*, is of great interest, as it reveals an unrecognized role of these kinases in the modulation of sPLA<sub>2</sub>-IIA expression. Remarkably, our studies showed that LT inhibited sPLA<sub>2</sub>-IIA expression by interfering with p38 MAPK activation. We also demonstrated that this kinase mediates NF- $\kappa$ B activation, a major transcription factor involved in sPLA<sub>2</sub>-IIA expression in guinea pig AMs (29), and that this activation is abrogated by LT. Although the mechanisms by which this kinase stimulates NF- $\kappa$ B activation in our cell system are still unclear, our findings indicated that this activation might not involve I $\kappa$ B $\alpha$  degradation or NF- $\kappa$ B nuclear translocation. It is thus likely that p38 MAPK induces

1 NF- $\kappa$ B activation at a level located downstream nuclear translocation of this transcription  
2 factor. We hypothesize that p38 MAPK induces a nuclear transactivation of NF- $\kappa$ B through  
3  
4 either a phosphorylation of NF- $\kappa$ B subunits or coactivators and that this process would lead to  
5 stimulation of sPLA<sub>2</sub>-IIA expression. In this model, the cleavage of MAPKK by LT would  
6  
7 result in the inhibition of NF- $\kappa$ B activation ultimately leading to alteration of sPLA<sub>2</sub>-IIA  
8  
9 expression. Our recent report showed that LT inhibit IL-8 expression in the pulmonary  
10 epithelial cells line Beas-2B in part by altering chromatin accessibility of IL-8 promoter to  
11  
12 activated NF- $\kappa$ B without any effect on NF- $\kappa$ B activation (15). Whether LT inhibits sPLA<sub>2</sub>-  
13  
14 IIA expression in AMs by a similar mechanism remains to be investigated. Recent reports  
15  
16 showed that epigenetic mechanisms play a key role the modulation of s sPLA<sub>2</sub>-IIA expression  
17  
18 (30, 31).  
19  
20  
21  
22  
23  
24  
25  
26

27 To confer a pathophysiological relevance to these studies we examined the effect of LT  
28  
29 instillation on the production of sPLA<sub>2</sub>-IIA *in vivo*. Our results showed that subcutaneous  
30  
31 instillation of LPS in ears induced an increased production of sPLA<sub>2</sub>-IIA either in BALF and  
32  
33 ear homogenates. We suggest that in this model LPS may induce locally (in ear tissues)  
34  
35 sPLA<sub>2</sub>-IIA expression the cell sources of which remains are still to be identified. In parallel,  
36  
37 LPS may diffuse into lung tissues where it stimulates sPLA<sub>2</sub>-IIA by AMs, a major source of  
38  
39 this enzyme in lungs (9). Moreover, a previous study showed that i.p. instillation of LPS  
40  
41 induced an increased pulmonary expression of TNF $\alpha$  transcript, suggesting that LPS rapidly  
42  
43 entered the blood stream and reached the competent cells within the lung tissues (32).  
44  
45  
46  
47 Interestingly, our data revealed that LT instillation decreased the levels of sPLA<sub>2</sub>-IIA both in  
48  
49 BALF and ears of LPS-challenged guinea pigs. Although the cell targets of LT in lung tissues  
50  
51 have not been identified it is likely that LT target AMs leading to sPLA<sub>2</sub>-IIA inhibition.  
52  
53  
54

55 It is clearly established now that i) sPLA<sub>2</sub>-IIA exhibits potent anthracidal properties (13), ii)  
56  
57 this enzyme is present in airways at sufficient concentrations to kill *B. anthracis*, and iii) LT  
58  
59  
60  
61  
62  
63  
64  
65



1 is synthesized shortly after germination of *B. anthracis* in the host. Thus, the control of  
2 sPLA<sub>2</sub>-IIA expression could represent an adaptive mechanism that allows *B. anthracis* to  
3 escape from the innate immune response. Our previous report showed that the decrease in  
4 sPLA<sub>2</sub>-IIA levels was paralleled by a decrease in the anthracidal activity in LT-treated AMs  
5 (13). The present study identifies a mechanism by which *B. anthracis* might modulate sPLA<sub>2</sub>-  
6 IIA expression in AMs, thus opening a new therapeutic strategy for the treatment of this  
7 deadly infection.  
8  
9  
10  
11  
12  
13  
14  
15  
16  
17  
18  
19  
20  
21  
22  
23  
24  
25  
26  
27  
28  
29  
30  
31  
32  
33  
34  
35  
36  
37  
38  
39  
40  
41  
42  
43  
44  
45  
46  
47  
48  
49  
50  
51  
52  
53  
54  
55  
56  
57  
58  
59  
60  
61  
62  
63  
64  
65

## 5. REFERENCES

- 1 [1] Mock M, Fouet A. Anthrax. *Annu Rev Microbiol* 2001;55:647-71.
- 2 [2] Lincoln RE, Hodges DR, Klein F, Mahlandt BG, Jones WI, Jr., Haines BW, et al. Role  
3 of the lymphatics in the pathogenesis of anthrax. *The Journal of infectious diseases*  
4 1965;115:481-94.
- 5 [3] Turnbull PC. Anthrax vaccines: past, present and future. *Vaccine* 1991;9:533-9.
- 6 [4] Gronroos JO, Laine VJ, Nevalainen TJ. Bactericidal group IIA phospholipase A2 in  
7 serum of patients with bacterial infections. *The Journal of infectious diseases*  
8 2002;185:1767-72.
- 9 [5] Weinrauch Y, Abad C, Liang NS, Lowry SF, Weiss J. Mobilization of potent plasma  
10 bactericidal activity during systemic bacterial challenge. Role of group IIA  
11 phospholipase A2. *The Journal of clinical investigation* 1998;102:633-8.
- 12 [6] Weinrauch Y, Elsbach P, Madsen LM, Foreman A, Weiss J. The potent anti-  
13 *Staphylococcus aureus* activity of a sterile rabbit inflammatory fluid is due to a 14-kD  
14 phospholipase A2. *The Journal of clinical investigation* 1996;97:250-7.
- 15 [7] Kim DK, Fukuda T, Thompson BT, Cockrill B, Hales C, Bonventre JV.  
16 Bronchoalveolar lavage fluid phospholipase A2 activities are increased in human adult  
17 respiratory distress syndrome. *The American journal of physiology* 1995;269:L109-  
18 18.
- 19 [8] Nakos G, Kitsioulis E, Hatzidaki E, Koulouras V, Touqui L, Lekka ME.  
20 Phospholipases A2 and platelet-activating-factor acetylhydrolase in patients with acute  
21 respiratory distress syndrome. *Crit Care Med* 2005;33:772-9.
- 22 [9] Arbibe L, Vial D, Rosinski-Chupin I, Havet N, Huerre M, Vargaftig BB, et al.  
23 Endotoxin induces expression of type II phospholipase A2 in macrophages during  
24 acute lung injury in guinea pigs: involvement of TNF-alpha in lipopolysaccharide-  
25 induced type II phospholipase A2 synthesis. *J Immunol* 1997;159:391-400.
- 26 [10] Attalah HL, Wu Y, Alaoui-El-Azher M, Thouron F, Koumanov K, Wolf C, et al.  
27 Induction of type-IIA secretory phospholipase A2 in animal models of acute lung  
28 injury. *Eur Respir J* 2003;21:1040-5.
- 29 [11] Furue S, Kuwabara K, Mikawa K, Nishina K, Shiga M, Maekawa N, et al. Crucial role  
30 of group IIA phospholipase A(2) in oleic acid-induced acute lung injury in rabbits.  
31 *Am J Respir Crit Care Med* 1999;160:1292-302.
- 32 [12] Touqui L, Alaoui-El-Azher M. Mammalian secreted phospholipases A2 and their  
33 pathophysiological significance in inflammatory diseases. *Current molecular medicine*  
34 2001;1:739-54.
- 35 [13] Gimenez AP, Wu YZ, Paya M, Delclaux C, Touqui L, Goossens PL. High bactericidal  
36 efficiency of type iia phospholipase A2 against *Bacillus anthracis* and inhibition of its  
37 secretion by the lethal toxin. *J Immunol* 2004;173:521-30.
- 38 [14] Piris-Gimenez A, Paya M, Lambeau G, Chignard M, Mock M, Touqui L, et al. In vivo  
39 protective role of human group Iia phospholipase A2 against experimental anthrax. *J*  
40 *Immunol* 2005;175:6786-91.
- 41 [15] Raymond B, Batsche E, Boutillon F, Wu YZ, Leduc D, Balloy V, et al. Anthrax lethal  
42 toxin impairs IL-8 expression in epithelial cells through inhibition of histone H3  
43 modification. *PLoS Pathog* 2009;5:e1000359.
- 44 [16] Raymond B, Leduc D, Ravaux L, Le Goffic R, Candela T, Raymondjean M, et al.  
45 Edema toxin impairs anthracidal phospholipase A2 expression by alveolar  
46 macrophages. *PLoS Pathog* 2007;3:e187.
- 47 [17] Baldari CT, Tonello F, Paccani SR, Montecucco C. Anthrax toxins: A paradigm of  
48 bacterial immune suppression. *Trends in immunology* 2006;27:434-40.
- 49  
50  
51  
52  
53  
54  
55  
56  
57  
58  
59  
60  
61  
62  
63  
64  
65

- 1 [18] Tournier JN, Quesnel-Hellmann A, Mathieu J, Montecucco C, Tang WJ, Mock M, et  
2 al. Anthrax edema toxin cooperates with lethal toxin to impair cytokine secretion  
3 during infection of dendritic cells. *J Immunol* 2005;174:4934-41.
- 4 [19] Mikesell P, Ivins BE, Ristroph JD, Dreier TM. Evidence for plasmid-mediated toxin  
5 production in *Bacillus anthracis*. *Infection and immunity* 1983;39:371-6.
- 6 [20] Green BD, Battisti L, Koehler TM, Thorne CB, Ivins BE. Demonstration of a capsule  
7 plasmid in *Bacillus anthracis*. *Infection and immunity* 1985;49:291-7.
- 8 [21] Mogridge J, Cunningham K, Lacy DB, Mourez M, Collier RJ. The lethal and edema  
9 factors of anthrax toxin bind only to oligomeric forms of the protective antigen.  
10 *Proceedings of the National Academy of Sciences of the United States of America*  
11 2002;99:7045-8.
- 12 [22] Vitale G, Pellizzari R, Recchi C, Napolitani G, Mock M, Montecucco C. Anthrax  
13 lethal factor cleaves the N-terminus of MAPKKs and induces tyrosine/threonine  
14 phosphorylation of MAPKs in cultured macrophages. *Biochemical and biophysical*  
15 *research communications* 1998;248:706-11.
- 16 [23] Hidi R, Vargaftig BB, Touqui L. Increased synthesis and secretion of a 14-kDa  
17 phospholipase A2 by guinea pig alveolar macrophages. Dissociation from arachidonic  
18 acid liberation and modulation by dexamethasone. *J Immunol* 1993;151:5613-23.
- 19 [24] Franson R, Patriarca P, Elsbach P. Phospholipid metabolism by phagocytic cells.  
20 Phospholipases A2 associated with rabbit polymorphonuclear leukocyte granules. *J*  
21 *Lipid Res* 1974;15:380-8.
- 22 [25] Paya M, Terencio MC, Ferrandiz ML, Alcaraz MJ. Involvement of secretory  
23 phospholipase A2 activity in the zymosan rat air pouch model of inflammation. *Br J*  
24 *Pharmacol* 1996;117:1773-9.
- 25 [26] Feuillard J, Memet S, Goudeau B, Lilienbaum A, Schmidt-Ullrich R, Raphael M, et al.  
26 In vivo identification of lymphocyte subsets exhibiting transcriptionally active NF-  
27 kappaB/Rel complexes. *Int Immunol* 2000;12:613-21.
- 28 [27] Wu YZ, Medjane S, Chabot S, Kubrusly FS, Raw I, Chignard M, et al. Surfactant  
29 protein-A and phosphatidylglycerol suppress type IIA phospholipase A2 synthesis via  
30 nuclear factor-kappaB. *Am J Respir Crit Care Med* 2003;168:692-9.
- 31 [28] Antonio V, Brouillet A, Janvier B, Monne C, Bereziat G, Andreani M, et al.  
32 Transcriptional regulation of the rat type IIA phospholipase A2 gene by cAMP and  
33 interleukin-1beta in vascular smooth muscle cells: interplay of the CCAAT/enhancer  
34 binding protein (C/EBP), nuclear factor-kappaB and Ets transcription factors. *The*  
35 *Biochemical journal* 2002;368:415-24.
- 36 [29] Alaoui-El-Azher M, Wu Y, Havet N, Israel A, Lilienbaum A, Touqui L. Arachidonic  
37 acid differentially affects basal and lipopolysaccharide-induced sPLA(2)-IIA  
38 expression in alveolar macrophages through NF-kappaB and PPAR-gamma-dependent  
39 pathways. *Molecular pharmacology* 2002;61:786-94.
- 40 [30] Menschikowski M, Hagelgans A, Gussakovsky E, Kostka H, Paley EL, Siegert G.  
41 Differential expression of secretory phospholipases A2 in normal and malignant  
42 prostate cell lines: regulation by cytokines, cell signaling pathways, and epigenetic  
43 mechanisms. *Neoplasia* 2008;10:279-86.
- 44 [31] Menschikowski M, Hagelgans A, Kostka H, Eisenhofer G, Siegert G. Involvement of  
45 epigenetic mechanisms in the regulation of secreted phospholipase A2 expressions in  
46 Jurkat leukemia cells. *Neoplasia* 2008;10:1195-203.
- 47 [32] Lefort J, Singer M, Leduc D, Renesto P, Nahori MA, Huerre M, et al. Systemic  
48 administration of endotoxin induces bronchopulmonary hyperreactivity dissociated  
49 from TNF-alpha formation and neutrophil sequestration into the murine lungs. *J*  
50 *Immunol* 1998;161:474-80.
- 51  
52  
53  
54  
55  
56  
57  
58  
59  
60  
61  
62  
63  
64  
65

## 6. Legends

### Figure 1: MAPK inhibition reduces sPLA<sub>2</sub>-IIA secretion by AMs

AMs were pretreated with (A) PD 98059 (100  $\mu$ M) or (B) SB 203580 (10  $\mu$ M) for 1 h, and then stimulated with LPS (50 ng/mL). After 24 h incubation, the levels of sPLA<sub>2</sub>-IIA was measured in the supernatants.

### Figure 2: LT inhibits sPLA<sub>2</sub>-IIA expression in CHO cells

(A) CHO cells were transfected with the [-1153; +46]-sPLA<sub>2</sub>-IIA luciferase construct. The cells were pretreated for 1 h with LT (PA 1  $\mu$ g/mL + increasing concentrations of LF) and then stimulated with IL-1 $\beta$  (10 ng/ml). (B) Co-transfected cells with the [-1153; +46]-sPLA<sub>2</sub>IIA luciferase construct plus DN-p38 construct were stimulated with IL-1 $\beta$  (10 ng/ml). (C) Co-transfected cells with the [-1153; +46]-sPLA<sub>2</sub>IIA luciferae construct plus AC-p38 were pretreated for 1 h with LT (500 ng/ml) and then stimulated with IL-1 $\beta$  (10 ng/ml). Luciferase activity was measured 24 h after the addition of IL-1 $\beta$ .

### Figure 3: LT fails to affect NF- $\kappa$ B translocation in AMs

(A) AMs were pretreated for 1 h with LT (1  $\mu$ g/mL) and then stimulated with LPS (50 ng/ml) and EMSA were performed as indicated in *Material and Methods*. (B) AMs were stimulated with LPS (50 ng/ml) during the indicated times and I $\kappa$ B $\alpha$  levels analysed by Western blot. (C) AMs were pretreated with LT (PA 1  $\mu$ g/mL + increasing concentrations of LF) or MG-132 (1  $\mu$ M) 1 h before 30 min stimulation with LPS (50 ng/mL). Cell extracts were subjected to I $\kappa$ B $\alpha$  analysis by western blot.

### Figure 4: LT alters NF- $\kappa$ B activation in CHO cells *via* MAPK-dependent process

1  
2  
3  
4  
5  
6  
7  
8  
9  
10  
11  
12  
13  
14  
15  
16  
17  
18  
19  
20  
21  
22  
23  
24  
25  
26  
27  
28  
29  
30  
31  
32  
33  
34  
35  
36  
37  
38  
39  
40  
41  
42  
43  
44  
45  
46  
47  
48  
49  
50  
51  
52  
53  
54  
55  
56  
57  
58  
59  
60  
61  
62  
63  
64  
65

(A) CHO were transfected with an NF- $\kappa$ B luciferase construct. Transfected cells were pretreated with LT (PA 1  $\mu$ g/mL + indicated concentrations of LF) 1 h before IL-1 $\beta$  (10 ng/ml) stimulation. (B) Cells co-transfected with the NF- $\kappa$ B luciferase plus DN-p38 (0.1-10 pg/mL) constructs were stimulated with IL-1 $\beta$  (10 ng/ml). (C) Cells co-transfected with the NF- $\kappa$ B luciferase plus AC-p38 (0.1-10 pg/mL) constructs were pretreated with LT (500 ng/ml) 1 h before IL-1 $\beta$  (10 ng/ml) stimulation. Luciferase activity was measured 24 h after the addition of IL-1 $\beta$ .

**Figure 5: LT reduces sPLA<sub>2</sub>-IIA activity in BALF and guinea pig ears**

Guinea pigs received subcutaneous administration of LT (PA 10  $\mu$ g + LF 5  $\mu$ g) 1 h before a second instillation of both LT (PA 5  $\mu$ g + LF 2.5  $\mu$ g) and LPS (100  $\mu$ g). 14 h later, sPLA<sub>2</sub>-IIA activity was measured in BALF (A) and ears (B) as detailed in the Methods.

Figure 1:

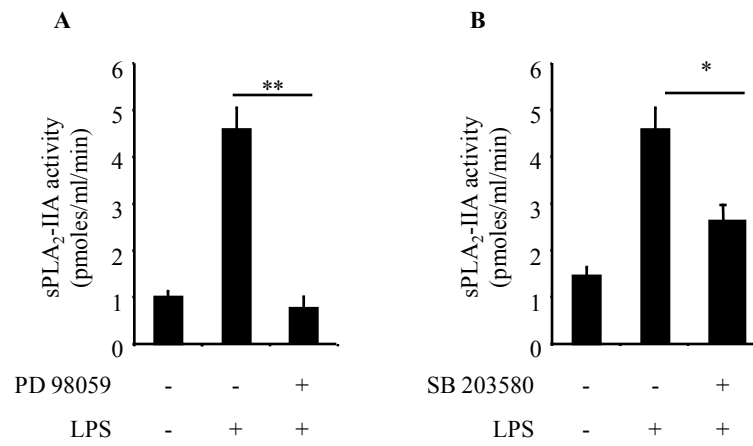


Figure 2:

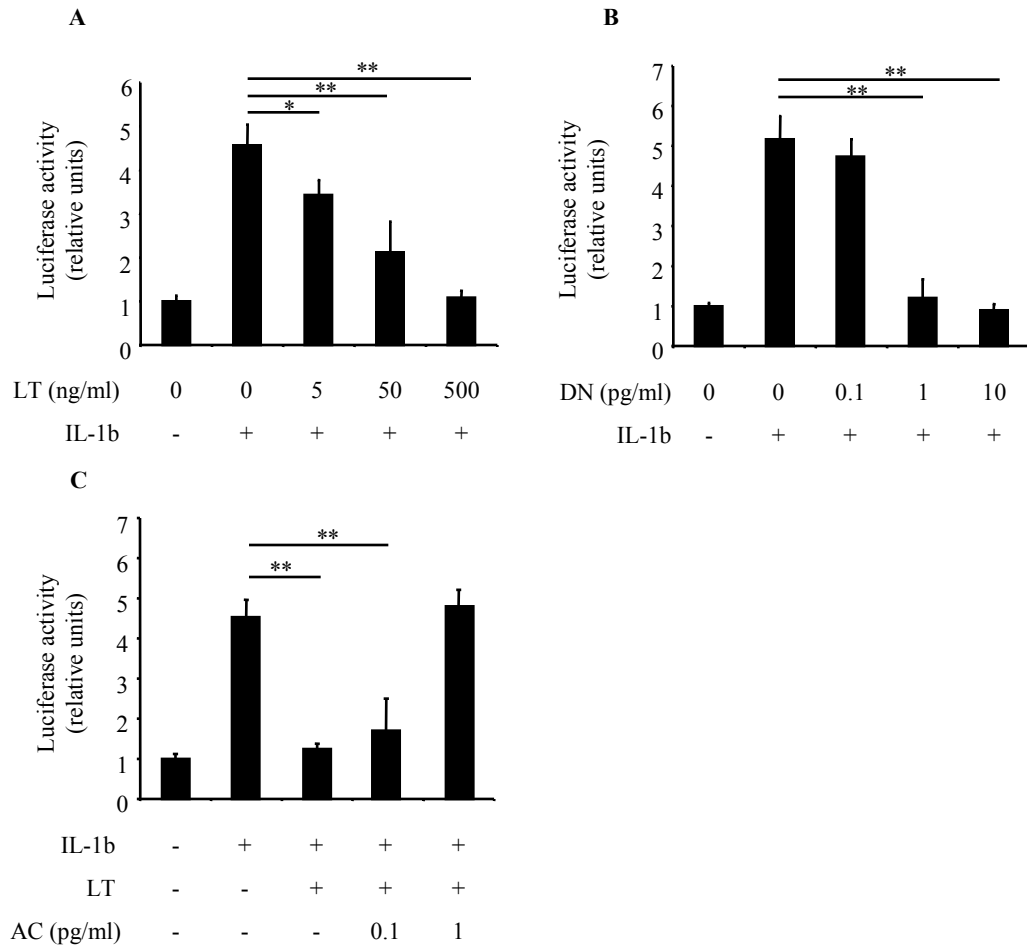


Figure 3:

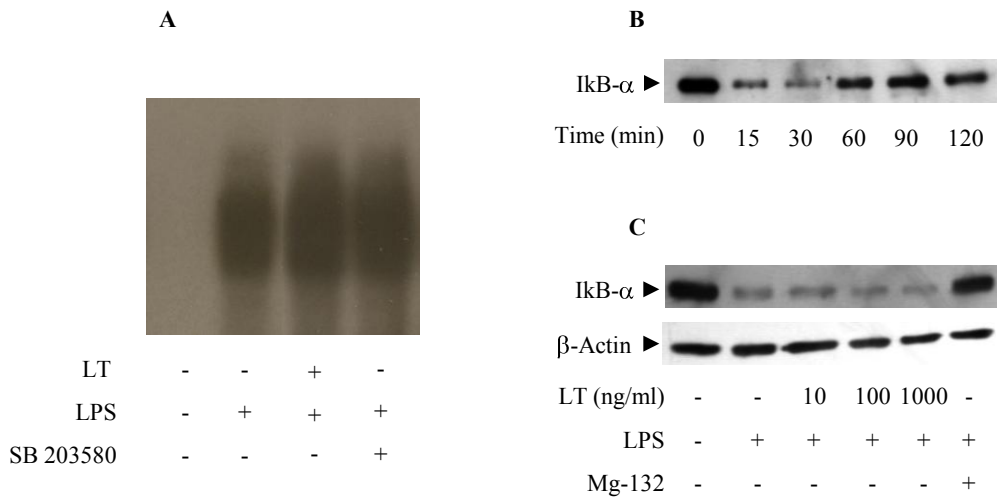




Figure 4:

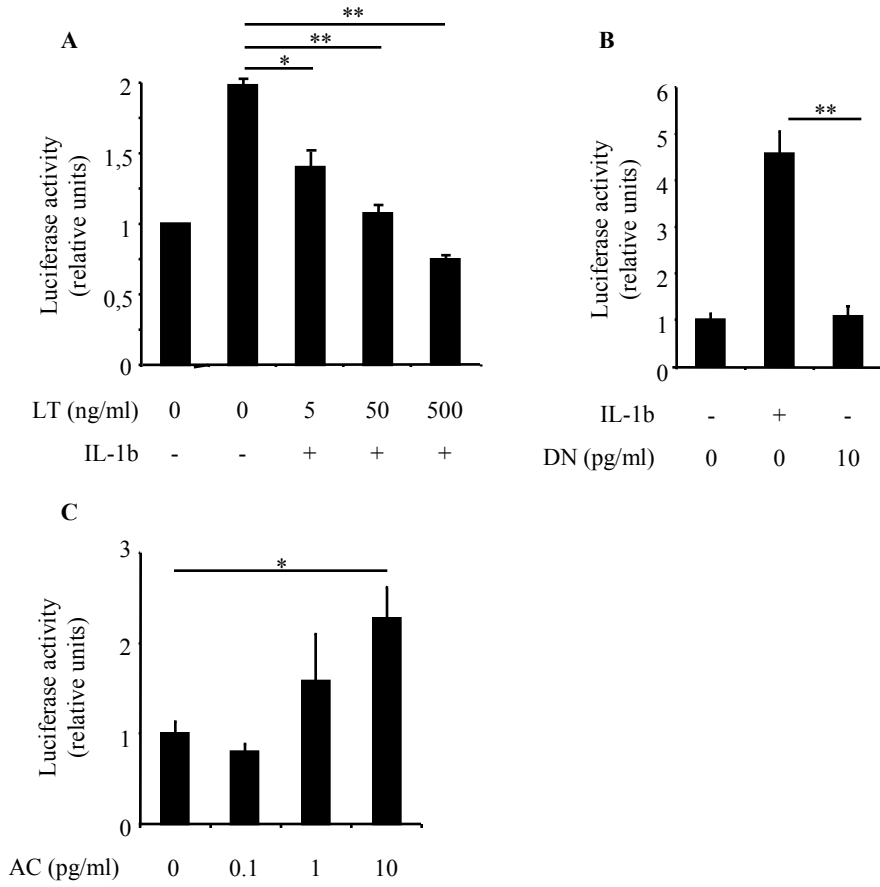
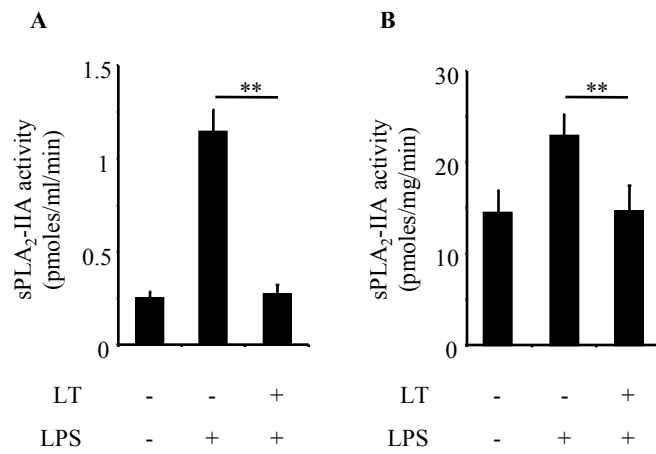
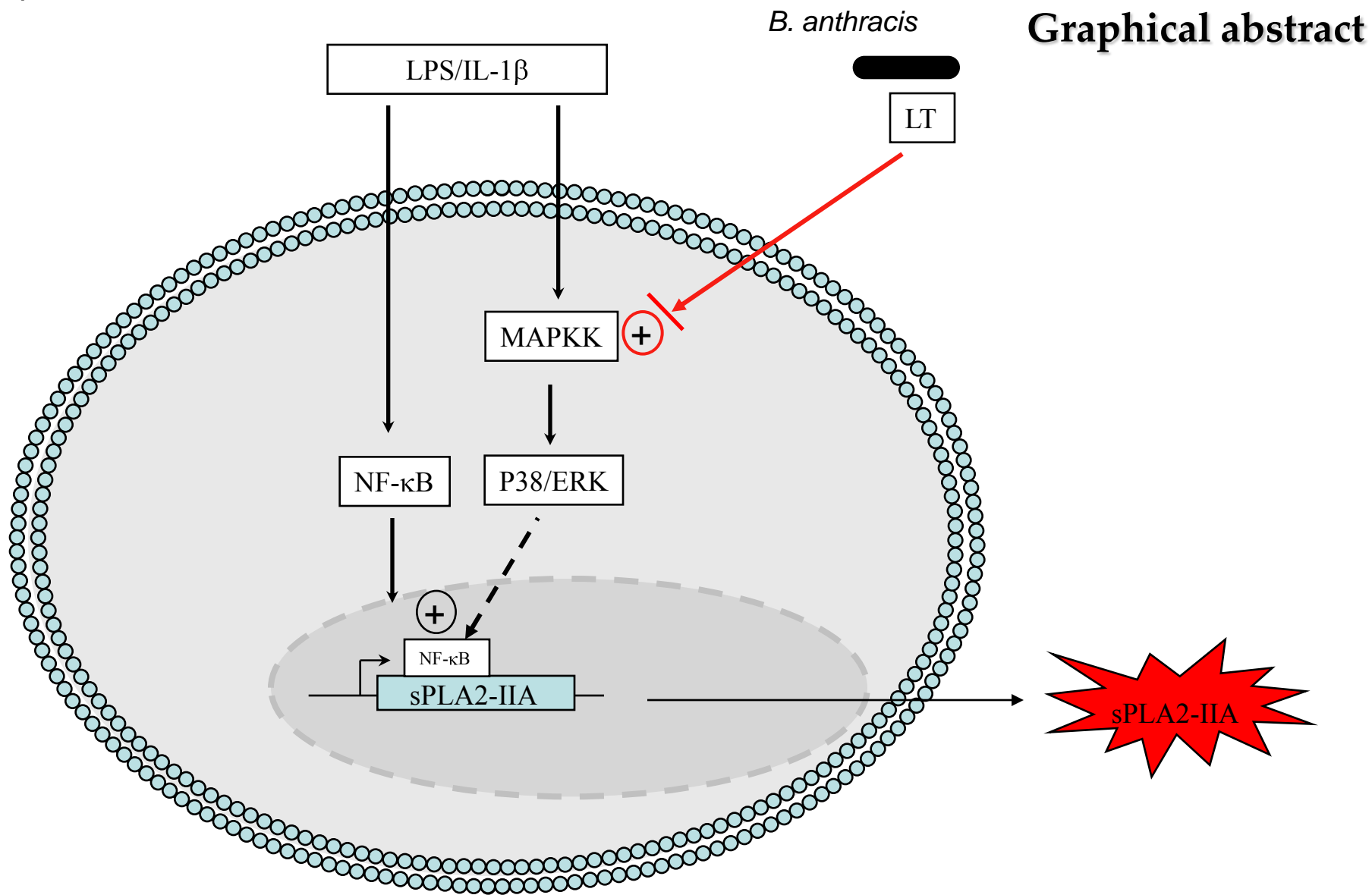


Figure 5:





Inflammatory signals (LPS, IL1 $\beta$ ) induce sPLA2-IIA expression in alveolar macrophages *via* NF- $\kappa$ B and p38/ERK-dependent mechanism. *Bacillus anthracis* produces Lethal Toxin (LT) which abrogates this induction by cleaving MAPKK